

1973

Industrial Resources: Clay County - Manchester

Kentucky Library Research Collections
Western Kentucky University, spcol@wku.edu

Follow this and additional works at: https://digitalcommons.wku.edu/clay_cty

 Part of the [Business Administration, Management, and Operations Commons](#), [Growth and Development Commons](#), and the [Infrastructure Commons](#)

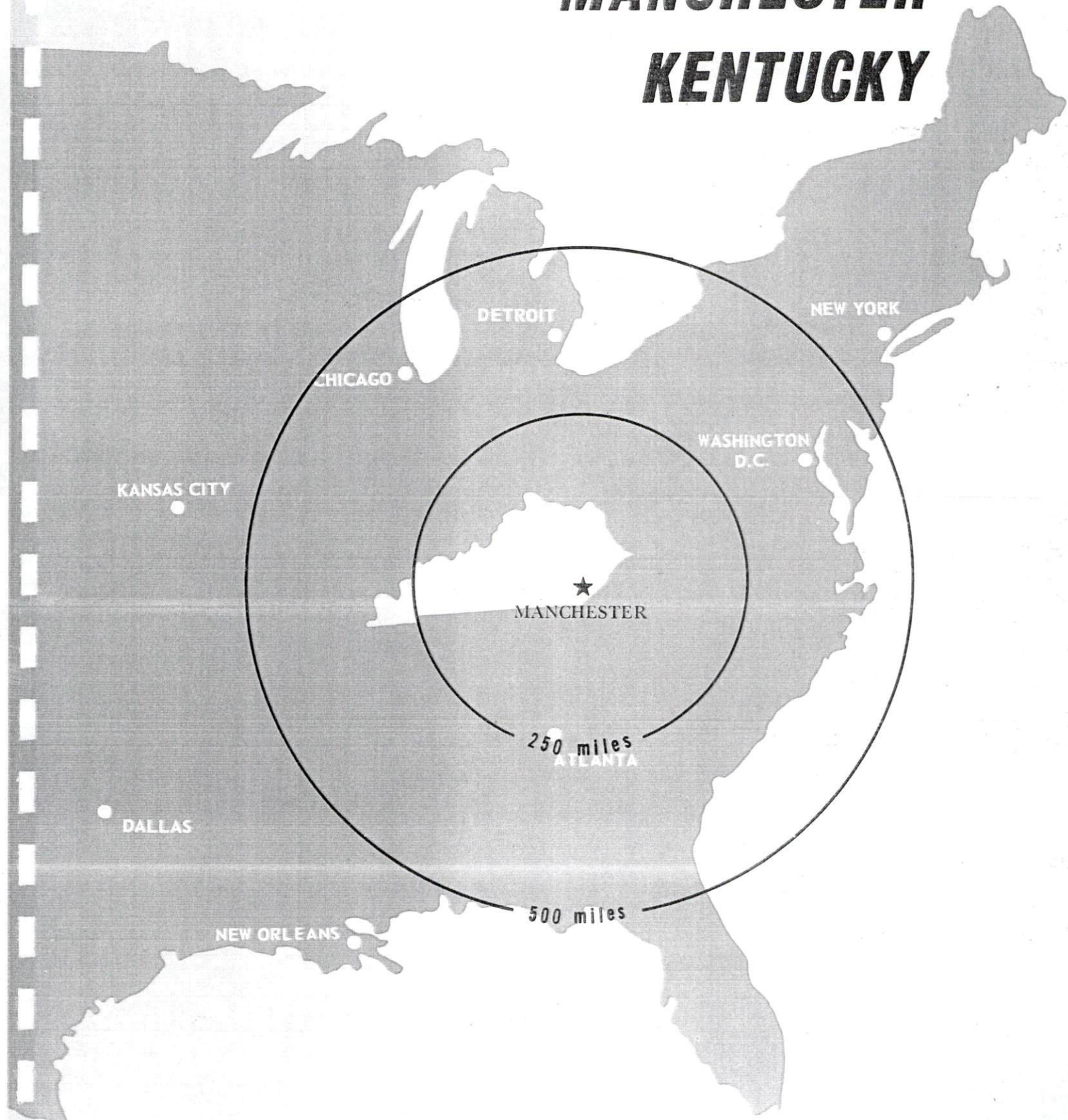
Recommended Citation

Kentucky Library Research Collections, "Industrial Resources: Clay County - Manchester" (1973). *Clay County*. Paper 7.
https://digitalcommons.wku.edu/clay_cty/7

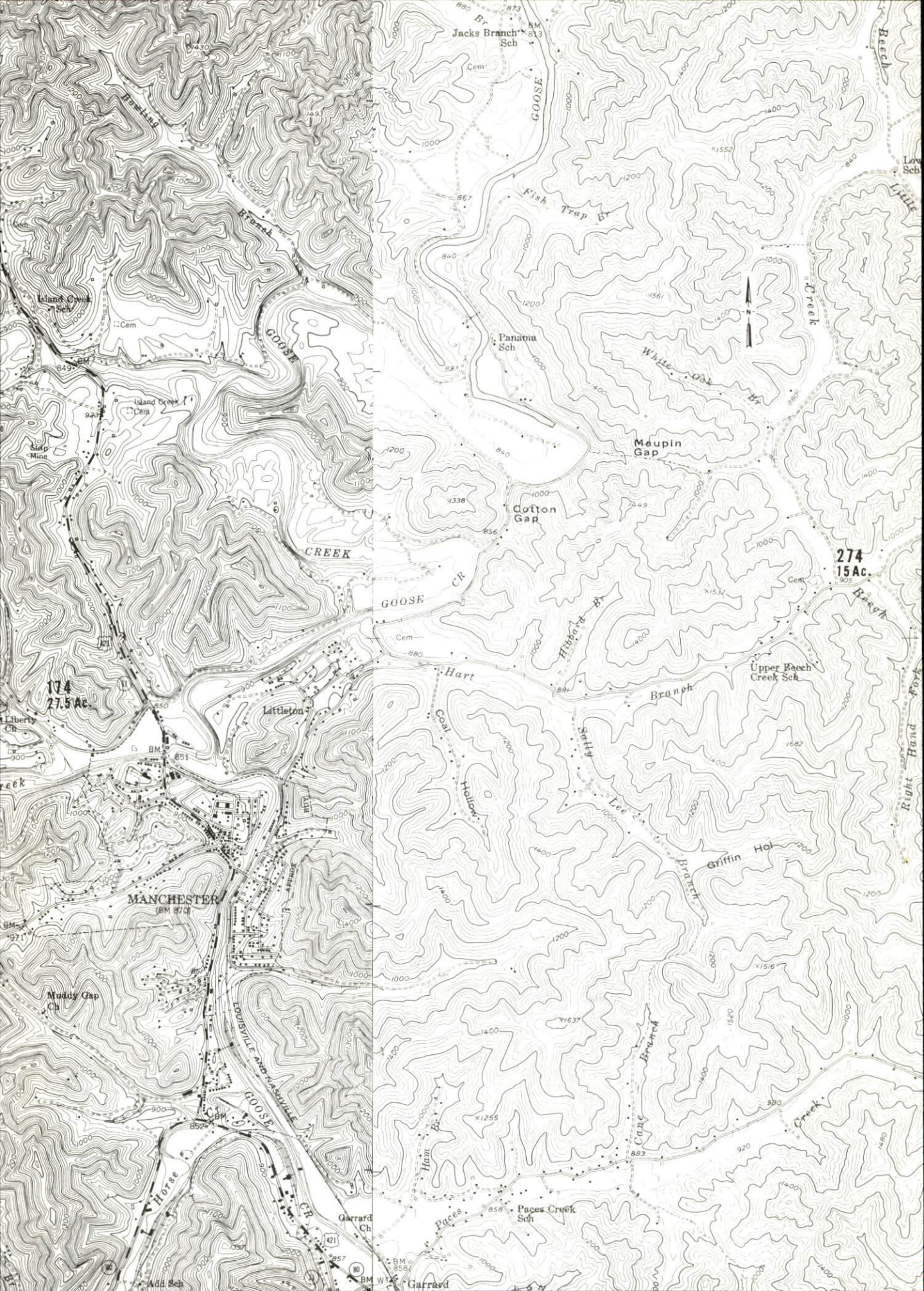
This Report is brought to you for free and open access by TopSCHOLAR®. It has been accepted for inclusion in Clay County by an authorized administrator of TopSCHOLAR®. For more information, please contact topscholar@wku.edu.

INDUSTRIAL RESOURCES

MANCHESTER KENTUCKY



CLAY COUNTY, KENTUCKY



174
27.5 Ac

274
15 Ac

MANCHESTER
(BM 871)

Garrard

INDUSTRIAL RESOURCES
MANCHESTER, KENTUCKY

Prepared by
The Kentucky Department of Commerce
in cooperation with
The Clay County Development Association

1974

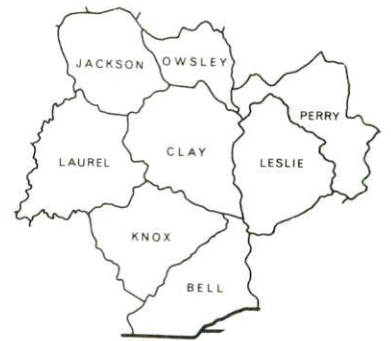
This copy has been prepared by the Kentucky Department of Commerce,
Division of Research and Planning, and the cost of printing paid from
state funds.

TABLE OF CONTENTS

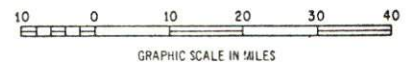
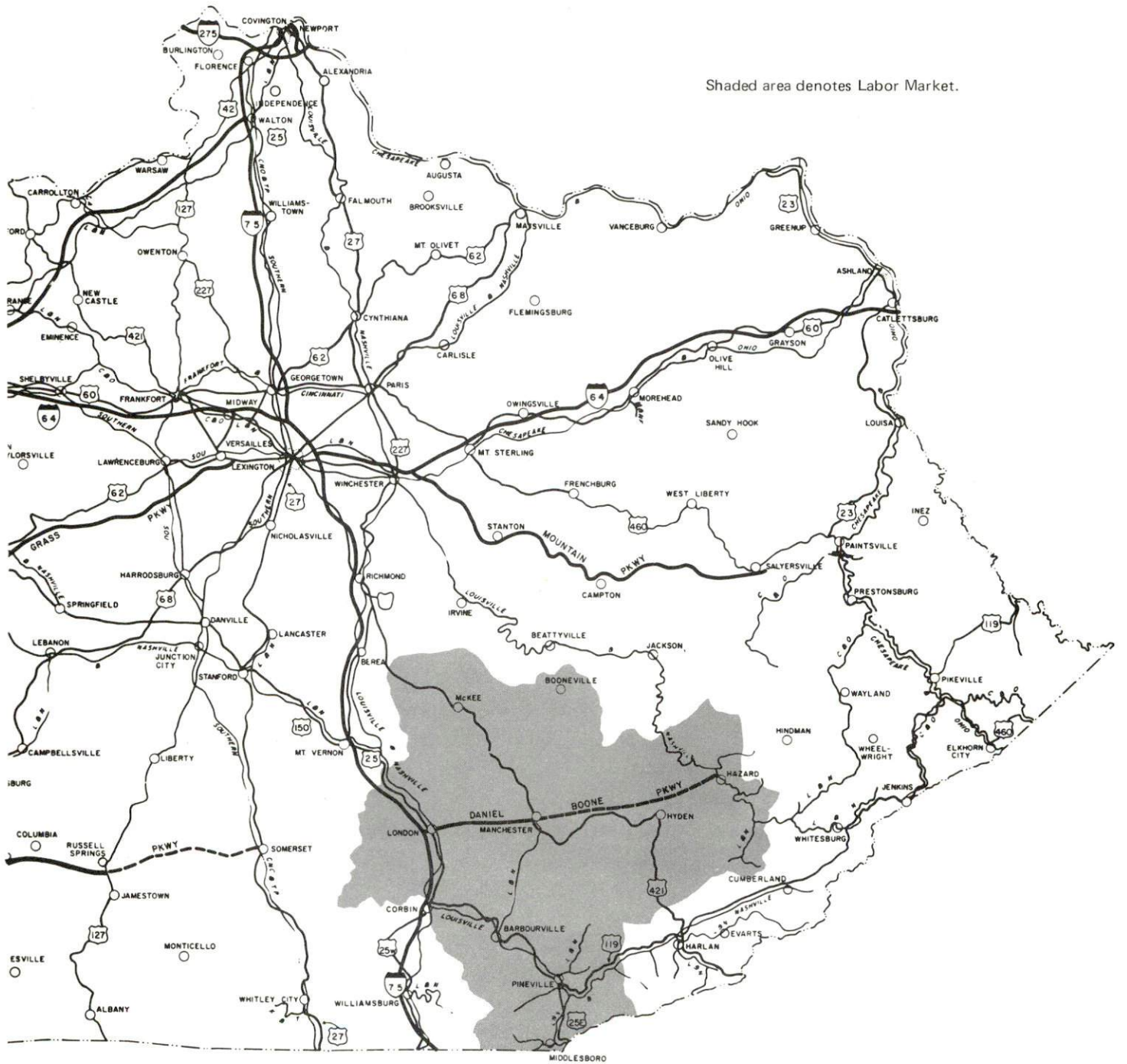
<u>Chapter</u>	<u>Page</u>
INDUSTRIAL SITES	i
MANCHESTER, KENTUCKY - A RESOURCE PROFILE	1
THE LABOR MARKET	5
Population Trends	5
General Employment Characteristics, 1972	5
Manufacturing Employment Trends by Industry	6
Manchester Manufacturing Firms, Their Products and Employment	6
Wages.	7
Labor Organizations	8
Estimated Male Labor Supply	8
Estimated Female Labor Supply	8
Per Capita Personal Income	9
TRANSPORTATION	10
Rail.	10
Truck Service	10
Air	11
Taxi	11
Rental Services	11
POWER AND FUEL	12
Electricity.	12
Natural Gas	12
Other Fuels	13
WATER AND SEWERAGE	14
Water.	14
Sewerage	16
LOCAL GOVERNMENT	17
City.	17
County.	17
Assessed Value of Property, 1973	17

<u>Chapter</u>	<u>Page</u>
Property Taxes	17
Local Property Tax Rate Per \$100 of Assessed Valuation, 1973	17
Planning and Zoning	18
Safety	18
Police	18
Fire	18
Rescue Service	18
Sanitation	19
 EDUCATION	 21
Public Schools	21
Nonpublic Schools	21
Vocational Schools	21
Colleges and Universities	22
 HEALTH	 24
Hospitals	24
Nursing Homes	24
Public Health	24
 OTHER LOCAL FACILITIES	 25
Communications	25
Library Services	25
Religious Institutions	25
Financial Institutions	26
Hotels and Motels	26
Clubs and Organizations	26
 RECREATION	 28
Local	28
Area	28
 AGRICULTURE - NATURAL RESOURCES - CLIMATE	 29
Agriculture	29
Natural Resources	29
Climate	30
 HISTORY	 31

MANCHESTER LABOR MARKET AREA



Shaded area denotes Labor Market.



MANCHESTER, KENTUCKY - A RESOURCE PROFILE

Manchester, the county seat of Clay County, is located in the beautiful and historic Daniel Boone National Forest in southeastern Kentucky. Manchester is 174 miles southeast of Louisville, Kentucky, 175 miles south of Cincinnati, Ohio, and 122 miles north of Knoxville, Tennessee.

Manchester had a 1970 population of 1,664 and Clay County had a population of 18,481. The total land area of Clay County is 474 square miles.

The Economic Framework

Total employment in Clay County in 1972 averaged 3,680 with agriculture providing 490 jobs, government 980 jobs, trade and services 600 jobs, and mining and quarrying 280 jobs. Manufacturing employment provided 225 jobs in 1972. Between 1963 and 1973 manufacturing employment increased 127 percent with 467 employed in September, 1973. Major products manufactured are small electrical appliances and cookware.

Per capita personal income in the county in 1971 was \$1,505, an increase of 172 percent since 1961.

In the Manchester labor market area, which includes Clay and its seven surrounding counties, total employment in 1972 averaged 39,020 with agriculture providing 4,710 jobs, government 7,690 jobs, trade and services 8,370 jobs, and mining and quarrying 3,920 jobs. Manufacturing provided 4,435 jobs. Between 1963 and 1973 manufacturing employment in the labor market area increased 106 percent with the largest growth in the paper and allied products, apparel, food and kindred products industries.

Despite important gains in recent years, the area still had a deficit of 10,230 manufacturing jobs when measured against the national industrial employment-population ratio for 1972. This indicates an area where the potential for additional manufacturing production is excellent.

Resources for Growth

1. Labor supply - There is a current estimated labor supply of 12,960 men and 11,550 women available for industrial jobs in the labor market area. In addition, 8,862 young men and 8,651 young women will have become 18 years of age by 1980 and will be potentially available for work.

2. Transportation - Manchester's transportation facilities are good. The Daniel Boone Parkway provides Manchester with easy access to Interstate 75 at London, 23 miles west. Manchester is also served by U. S. 421 and Kentucky 80. Rail service is provided by the Louisville and Nashville Railroad. Sky Airport, a private facility at Manchester, can accommodate light aircraft. Commercial air service is available at the London-Corbin Magee Field Airport, 25 miles southwest of Manchester.

3. Energy - Electricity is supplied to Manchester by the Kentucky Utilities Company. Clay County is supplied electric power by the Jackson County RECC and the Kentucky Utilities Company. Natural gas is provided to Manchester by the Peoples Gas Company. There are three distributors of propane and two distributors of distillate fuel oil located in Manchester.

4. Education - Manchester has one school system, the Clay County School System. In addition, 245 students are enrolled in non public schools in Clay County. There are four senior colleges and four junior colleges located within 70 miles of Manchester.

Two state vocational-technical schools are located near Manchester: the Hazard State Vocational Technical School, 55 miles east, which offers 18 course areas, and the Somerset State Vocational Technical School, 56 miles west, which offers 13 course areas. The Clay County Area Vocational Education Center at Manchester offers 7 course areas.

Community Programs for Improvement

Recent: The Clay County School System has completed a \$300,000 addition to the Goose Rock Elementary School. Two speech therapists and a dental hygienist have been added to the staff of the school system.

New radio communication equipment has recently been installed at the Manchester Police Department and at the Clay County Sheriff's office. Each office now has a communication network which can provide contact with any police department within the state and with the state police. Each office also has a regional radio communication system which provides contact with police departments within a fifteen-county area.

The Burning Springs Fire Department began operation in January 1974 and is now equipped with one 500 gpm pumper.

Mercury vapor lights have been installed on the access road to the Manchester Memorial Hospital and in various other locations throughout the city.

Improved lighting, fencing, and an electric scoreboard have been installed at the Ramsey Ball Park.

The First State Bank has been completely remodeled and banking services have been completely computerized.

New commercial businesses include two mobile home sales, a supermarket, a drive-in restaurant, an ice-cream parlor, a bakery, a drugstore, a discount department store, and an S-Mart store which contains 30,000 square feet of space. In addition two private doctors clinics have opened recently. Several existing businesses have relocated in new buildings.

S. M. K. Corporation, which manufactures ladies' robes, is in operation, employing 60 people.

Underway and planned: A new \$1,000,000 building project is underway to house the Manchester Elementary School. The building will consist of 30 classrooms, a materials center, a multi-purpose room, a kitchen and cafeteria, and administrative offices. Additions are also planned for two other elementary schools. The addition of drivers training and health occupation classes to the curriculum of the high schools is planned.

The Manchester Fire Department is planning to purchase a new 750 gpm pumper to update and replace older equipment. By the end of 1974 the Burning Springs Fire Department expects to acquire an additional 500 gpm pumper, two tankers, and a jeep equipped with a water tank for fighting field fires. Construction will also begin soon on a fire station for the department.

The city of Manchester is planning a new park and an additional softball field for Ramsey Ball Park. Additional tennis courts are also planned at St. Ann's Church.

New buildings planned include: A new Kentucky Utilities Company office building with an auditorium; a new municipal building; a youth recreation center; a branch office of the First State Bank; and a personal care home for the elderly.

The Kentucky Utilities Company plans to construct an additional substation in Clay County during 1974.

The North Manchester Water Association, Inc., which will service the area north of Manchester extending for approximately 9 miles along U. S. 421 is under construction. Most of the water lines have already been laid. A 250,000 gallon water storage tank has been constructed. The Water Association is expected to begin operation by August, 1974.

Recreation, Entertainment and Livability

Manchester sponsors a supervised recreation program during the summer months. The school playgrounds, tennis courts, and baseball diamonds are available for use.

Clay County is located in the Daniel Boone National Forest. Four of Kentucky's beautiful state parks and one national park are within easy driving distance.

Cumberland Falls State Resort Park, 46 miles southwest, is a 1,720-acre park located in the Daniel Boone National Forest. The park offers lodge and cottage accommodations and sites for tent and trailer camping. Features of the park include an olympic size swimming pool, fishing, hiking, horseback riding, picnic areas, a playground, and square dance pavilion. The primary attraction is the beautiful waterfall, with its moon-bow during the full phase of the moon.

Pine Mountain State Resort Park, 40 miles south, is a 2,500-acre park located in the Kentucky Ridge State Forest. Lodge and cottage accommodations and camping facilities are available. The park provides recreational facilities for swimming, fishing, hiking, horseback riding, shuffleboard, miniature and 9-hole golf, and picnic and playground areas. The park is the scene of the annual Mountain Laurel Festival and the summer production of the world famous "Book of Job" choral drama.

Levi Jackson Wilderness Road State Park, an 815-acre park 22 miles west of Manchester, is the home of the Mountain Life Museum. It memorializes the pioneer movement westward from Cumberland Gap along the Wilderness Road made famous by Daniel Boone. The park has facilities for camping, swimming, hiking and horseback riding.

Buckhorn Lake State Resort Park, 59 miles northeast, is a 750-acre park located in the scenic mountains of Kentucky. The park provides a resort lodge, dining room, and camping sites. Facilities are available for pool and lake swimming and fishing and boating on the 1,250-acre Buckhorn Lake.

Cumberland Gap National Historical Park, 60 miles south, is the largest national historical park in the U. S. - 20,168 acres. The park is the site of Dr. Thomas Walker's discovery in 1750 of the gap in the mountains through which Daniel Boone later led the pioneers into Kentucky and westward. A museum of frontier days is located at the park headquarters.

The Dr. Thomas Walker State Shrine, 32 miles southwest, commemorates the man who led a small party through Cumberland Gap in 1750 to begin an exploration of Kentucky. A replica of the first pioneer house built in Kentucky and a monument to Walker's memory are located at the shrine.

THE LABOR MARKET

POPULATION TRENDS

Area	Population				Percent Change	
	1972*	1970	1960	1950	1960-70	1950-60
Manchester	N. A.	1,664	1,868	1,706	-10.9	+ 9.5
Labor Market Area	159,400	153,587	168,191	209,452	- 9.0	-19.7
Clay County	19,400	18,481	20,748	23,116	-10.9	-10.2
Bell County	32,000	31,121	35,336	47,602	-11.9	-25.8
Jackson County	10,100	10,005	10,677	13,101	- 6.3	-18.5
Knox County	24,400	23,689	25,258	30,409	- 6.2	-16.9
Laurel County	28,900	27,386	24,901	25,797	+10.0	- 3.5
Leslie County	12,300	11,623	10,941	15,537	+ 6.2	-29.6
Owsley County	5,200	5,023	5,369	7,324	- 6.4	-26.7
Perry County	27,100	26,259	34,961	46,566	-24.9	-24.9

*Provisional estimates.

Sources: U. S. Department of Commerce, Bureau of the Census, Census of Population, 1970, 1960, 1950. U. S. Bureau of the Census, Current Population Reports, Series P-26, June 1973.

GENERAL EMPLOYMENT CHARACTERISTICS, 1972

Major Employment Group	Employment	
	Clay County	Labor Market Area
TOTAL	3,680	39,020
Agricultural	490	4,710
Nonagricultural	3,190	34,310
Manufacturing	225	4,435
Government	980	7,690
Trade and Services	597	8,367
Mining	284	3,919
Other	1,104	9,899

Sources: Kentucky Department for Human Resources, Bureau for Administration and Operations; Kentucky Department of Commerce, 1973 Kentucky Directory of Manufacturers; Kentucky Department of Mines and Minerals, Annual Report, 1972.

MANUFACTURING EMPLOYMENT TRENDS BY INDUSTRY
SEPTEMBER 1973 AND 1963

Industry	Clay County			Labor Market Area		
	1973	1963	%Change	1973	1963	%Change
TOTAL	467	205	+127.8	5,584	2,708	+ 106.2
Food & Kindred						
Products	0	0	0	884	472	+ 87.3
Tobacco	0	0	0	2	1	+ 100.0
Apparel, Textiles,						
Leather	42	0	--	1,434	389	+ 268.6
Lumber, Furniture	420	201	+109.0	1,283	1,119	+ 14.7
Printing & Publishing,						
Paper	5	4	+ 25.0	904	71	+1173.2
Chemicals, Petroleum						
& Coal, Rubber	0	0	0	233	87	+ 167.8
Stone, Clay & Glass	0	0	0	68	100	- 32.0
Machinery, Metal						
Products, Equip.	0	0	0	726	466	+ 55.8
Other	0	0	0	50	3	+1566.7

Source: Kentucky Department for Human Resources, Number of Workers in Manufacturing Industries Covered by Kentucky Unemployment Insurance Law Classified by Industry and County, September 1973, September 1963.

MANCHESTER MANUFACTURING FIRMS,
THEIR PRODUCTS AND EMPLOYMENT

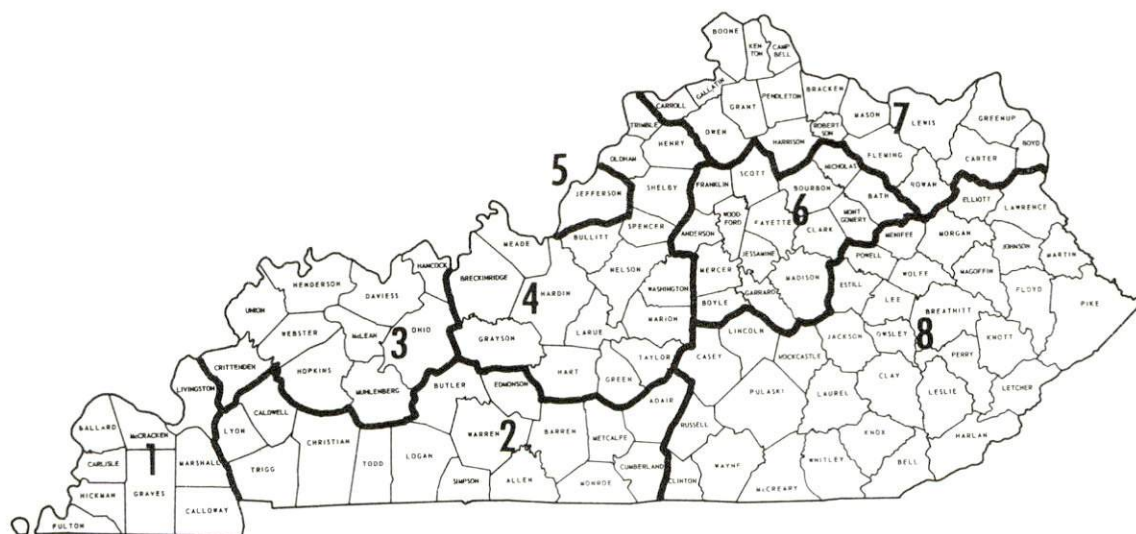
Firm (Establishment Date)	Product	Employment		
		Total	Male	Female
Boone Boy Industries, Inc. (1964)	Upholstered furniture	32	17	15
Clay County Furniture Mfg., Inc. (1969)	Living room furniture	14	7	7
Etowah Mfg. Company of Kentucky (1968)	Small electrical appliances, cookware	231	118	113
Hale Lumber Co. (1954)	Barrel staves, rough lumber	12	12	0
Keith Lumber Co. (1945)	Rough lumber	13	13	0
London-Clay Ready Mix, Inc. (1971)	Ready mixed concrete	5	5	0
S.M.K. Corp. (1973)	Ladies' robes	60	3	57
The Manchester Enterprise (1954)	Newspaper, job printing	6	3	3

Source: Kentucky Department of Commerce, 1974 Kentucky Directory of Manufacturers; S. M. K. Corporation.

WAGES

Occupational wage rates for specific industries are usually not available to most government agencies, and wage data furnished to state employment agencies by industrial employers is protected from disclosure by federal law. The most reliable up-to-date wage information can be obtained by direct contact with local employers.

Associated Industries of Kentucky, a voluntary organization of Kentucky businesses, regularly collects occupational wage rates and fringe benefits data from participating member firms. Data is compiled for over 130 clearly defined office, production, and service occupations. Tabulations are published for eight regions of Kentucky, as shown on the map below. It should be noted that the data may be weighted by the preponderance of firms in the larger cities and may be somewhat higher than the rates paid in the smaller communities. Data from these tabulations are available, upon request, from the Kentucky Department of Commerce, Frankfort, Kentucky 40601.



Associated Industries of Kentucky Area Wage Surveys

LABOR ORGANIZATIONS

There are no unions representing manufacturing workers in Clay County.

ESTIMATED MALE LABOR SUPPLY MANCHESTER LABOR MARKET AREA

Area	Current			Under- employed	Future Reaching 18 yrs. of age by 1980
	Total	Not in Labor Force	Unemployed		
Labor Market					
Area	12,960	7,730	3,120	2,110	8,862
Clay	2,210	1,500	400	310	1,175
Bell	2,780	1,810	610	360	1,728
Jackson	1,110	690	290	130	552
Knox	2,010	1,110	450	450	1,220
Laurel	1,240	320	490	430	1,504
Leslie	1,000	670	240	90	815
Owsley	680	470	130	80	287
Perry	1,930	1,160	510	260	1,581

Sources: Kentucky Department for Human Resources, Kentucky Labor Supply Estimates by County, 1973. Kentucky Department of Commerce, Future Labor Supply by 1980.

ESTIMATED FEMALE LABOR SUPPLY MANCHESTER LABOR MARKET AREA

Area	Current			Under- employed	Future Reaching 18 yrs. of age by 1980
	Total	Not in Labor Force	Unemployed		
Labor Market					
Area	11,550	8,650	1,040	1,860	8,651
Clay	1,290	1,070	70	150	1,185
Bell	2,460	1,920	120	420	1,675
Jackson	940	700	100	140	554
Knox	1,790	1,180	260	350	1,265
Laurel	1,680	1,050	200	430	1,450
Leslie	930	800	60	70	784
Owsley	630	570	30	30	262
Perry	1,830	1,360	200	270	1,476

Sources: Kentucky Department for Human Resources, Kentucky Labor Supply Estimates by County, 1973. Kentucky Department of Commerce, Future Labor Supply by 1980.

PER CAPITA PERSONAL INCOME

<u>Area</u>	<u>1971</u>	<u>1961</u>	<u>% Change</u>
Clay County	\$1,505	\$ 552	+172.6
Labor Market Area			
Range	\$1,236 - 2,345	\$552 - 1,058	N.A.
Kentucky	3,310	1,677	+ 97.3
U. S.	4,164	2,265	+ 83.8

Sources: University of Kentucky, Office of Development Services and Business Research, Per Capita Income in Kentucky. U. S. Department of Commerce, Bureau of Economic Analysis, Survey of Current Business, August, 1973.

TRANSPORTATION

Rail

Line serving Manchester - Louisville & Nashville Railroad

Services - Freight; one local freight daily, Corbin to Manchester and return, 7 days a week; siding space for 15 cars for loading and unloading. The nearest piggyback facilities are at Williamsburg, 52 miles distant.

For details on routing, schedules, rates, and services, contact:

Manager of Industrial Development
Louisville & Nashville Railroad Company
908 West Broadway
Louisville, Kentucky 40203

Truck Service

<u>Company</u>	<u>Home Office</u>
Detherage Freight Line	Somerset, Kentucky
McDuffee Motor Freight, Inc. (United Trucking)	Detroit, Michigan

Other Freight Services

REA Express	Local pickup and delivery
United Parcel Service	London, Kentucky - nearest shipping center

HIGHWAY MILES AND TRUCK TRANSIT TIME IN DAYS FROM MANCHESTER, KENTUCKY, TO SELECTED MARKET CENTERS

City	Delivery		City	Delivery	
	Highway Miles	Time TL		Highway Miles	Time TL
Atlanta, Ga.	316	2	Los Angeles, Calif.	2,281	5
Birmingham, Ala.	376	2	Louisville, Ky.	174	1
Chicago, Ill.	466	2	Nashville, Tenn.	207	2
Cincinnati, Ohio	175	1	New Orleans, La.	731	3
Cleveland, Ohio	427	2	New York, N. Y.	851	3
Detroit, Mich.	441	2	Pittsburgh, Pa.	475	2
Knoxville, Tenn.	122	1	St. Louis, Mo.	438	2

Source: Delivery time only - Bronaugh Motor Express, Inc., 1025 Nandino Blvd., Lexington, Kentucky.

Air

	<u>Local</u>	<u>Nearest Commercial</u>
	Sky Airport (private)	London-Corbin Magee Field Airport London, 25 miles distant 1 paved 6,000 feet
Location:	Manchester	
Runways:	1 turf	
Length:	2,350 feet	
Traffic		
Control:	Wind sock	Wind sock
Lighting:	None	Beacon, runway, and obstruction lights
Services:	80 octane	Piedmont Airlines, 80 and 100 octane, JP-A-50, taxi, weather, flight training, charter and ambulance service, vending machines
Air Freight Service:		Commercial air carriers accept air freight on a space-available basis

Taxi - 12-hour service daily

Rental Services - Car rental

POWER AND FUEL

Electricity

Company serving Manchester and Clay County - Kentucky Utilities Company

Source of Power - Kentucky Utilities Company

Total generating capacity - 1,735,000 KW

For industrial rates contact:

Kentucky Utilities Company
216 Main Street
Manchester, Kentucky 40962

Company serving Clay County - Jackson County RECC

Source of power - East Kentucky Power Cooperative

Total generating capacity - 548,000 KW

For industrial rates contact:

Jackson County RECC
McKee, Kentucky 40447

Natural Gas

Company serving Manchester - Peoples Gas Company

Source of supply - Wiser Oil Company

Size of transmission mains - 8, 6, and 4 inches (supplier); 8, 6, 4 and 2 inches (distributor)

Distribution mains - 4 and 2 inches

Distribution pressure - 15 to 20 psi

Btu content - 1,160 per cubic foot

Specific gravity - .67

For rates and supplies contact:

Peoples Gas Company
513 South Main
Corbin, Kentucky

Other Fuels

Propane and butane - Daniel Baker Company
Route 1
Manchester, Kentucky

Manchester Sales and Service
110 Richmond Road
Manchester, Kentucky

Superior Fuel Company
Manchester, Kentucky

Fuel Oils -

Distillate fuel oil - Daniel Baker Shell Oil Co.,
Greenbriar Road
Manchester, Kentucky

Standard Oil Company
104 Lucas Road
Manchester, Kentucky

Residual fuel oil - Arrangements must be made with the refinery

Low sulphur content coal - Available locally

WATER AND SEWERAGE

Water

Company serving Manchester - Manchester Water and Sewer Works
Source - Bert T. Combs Lake
Treatment plant capacity - 500,000 gpd
Average daily consumption - 230,000 gallons
Peak daily consumption 250,000 gallons
Type treatment - Coagulation, settling, filtration, chlorination,
fluoridation
Storage capacity - 235,000 gallons
Size lines - 8, 6, 4 and 3 inches
Average pressure - 70 psi
Average temperature - 50 degrees F.

MONTHLY WATER RATES FOR WHOLESALE AND INDUSTRIAL CONSUMERS

Inside city

First	2,000 gallons	\$1.50 per M gallons
Next	8,000 gallons	.80 per M gallons
Next	10,000 gallons	.70 per M gallons
Next	20,000 gallons	.60 per M gallons
All over	40,000 gallons	.55 per M gallons

Outside city

First	2,000 gallons	\$2.25 per M gallons
Next	8,000 gallons	1.20 per M gallons
Next	10,000 gallons	1.05 per M gallons
Next	20,000 gallons	.90 per M gallons
All over	40,000 gallons	.83 per M gallons

Tap-on charge - \$90 with plans to be increased to \$150
in the near future. Commercial and industrial tap-on
charges vary with the size of service.

Name of water district - Hima-Sibert Water District
Area served - Along Ky. 80 from Manchester city limits west to the
Laurel County-Clay County line
Date when water district began operating - June 1971
If water district purchases treated water:
Source of supply of treated water - Manchester Water Works

Average amount of water used in a 24-hour period - 26,866 gallons

Peak amount of water used in a 24-hour period - 100,000 gallons

Storage capacity - None

Average pressure - 70 psi

Average temperature - 50 degrees F.

Size lines - 6 and 3 inches

Rates -

First	2,000 gallons	\$4.50 (Minimum)
Next	3,000 gallons	1.50 per M gallons
Next	5,000 gallons	1.25 per M gallons
Next	15,000 gallons	1.15 per M gallons
Next	25,000 gallons	1.10 per M gallons
Next	50,000 gallons	1.00 per M gallons
All over	100,000 gallons	.75 per M gallons

Tap-on charge - \$150

Name of water district - North Manchester Water Association, Inc.

Area to be served - North Manchester

Date when water district is expected to begin operation - August, 1974

If water district purchases treated water:

Source of supply of treated water - Manchester Water Works

Storage capacity - 250,000 gallons

Size lines - 8 and 6 inches

Rates -

First	2,000 gallons	\$5.80 (Minimum)
Next	3,000 gallons	1.10 per M gallons
Next	5,000 gallons	1.00 per M gallons
Next	15,000 gallons	.90 per M gallons
Next	25,000 gallons	.80 per M gallons
Next	50,000 gallons	.70 per M gallons
All over	100,000 gallons	.60 per M gallons

Tap-on charge - \$250

Surface water sources - Goose Creek and South Fork Kentucky River

Average discharge - Goose Creek at Manchester 213 cfs (7 years, USGS)

Expected ground water yield - 50 to 200 gpm along southern boundary of county; remainder of county 5 to 50 gpm

Sewerage

Company serving Manchester - Manchester Water and Sewer Works

Design capacity - 350,000 gpd

Average daily flow - 170,000 gallons

Treatment - primary and secondary

Type treatment - Chlorination and drying beds

Treated effluent discharged into - Goose Creek

Size of sanitary mains - 8 inches

Size of storm mains - 12 and 15 inches

Rates - 50 percent of monthly water bill

Tap-on charge - \$90 for 3/4 inch service, with plans to be increased to \$150 in the near future. Commercial and industrial tap-on charges vary with the size of service.

LOCAL GOVERNMENT

City

Structure - Mayor - 4-year term; 6 councilmen - 2-year terms
Budget 1973 - General Fund \$79,887
Fees and licenses - Business licenses range from \$5 to \$150 annually;
car stickers \$5 per year

County

Structure - County Judge - 4-year term; 4 magistrates - 4-year terms
Budget 1973-74 - General Fund \$85,852; Road Fund \$39,750

Assessed Value of Property, 1973

<u>Classes of Property</u>	<u>Manchester</u>	<u>Clay County</u>
Real Estate	\$5,246,150	\$29,797,325
Tangibles	1,889,500	10,930,200
Public Service	141,320	6,982,117

Property Taxes

Land and buildings are taxed by the state and may be taxed by local jurisdictions. The state rate is \$0.015 per \$100 of assessed valuation.

Tangible personal property owned by manufacturers (automobiles, trucks, finished goods, office furniture, office equipment) is taxed by the state at \$0.15 per \$100 and may be taxed by local jurisdictions.

Manufacturing machinery, raw materials inventories, and goods in process inventories are not subject to local taxation. The state rate is \$0.15 per \$100.

Property stored in public warehouses is not subject to local taxation. The state rate is only \$0.015 per \$100.

All property is assessed at 100 percent of fair cash value.

Local Property Tax Rate Per \$100 of Assessed Valuation, 1973*

<u>Taxing Jurisdiction</u>	<u>Manchester</u>	<u>Clay County</u>
County	\$.211	\$.211
School	.394	.394
City	.350	

*Kentucky Department of Revenue, Kentucky Property Tax Rates, 1973.

Planning and Zoning

Joint agency - Manchester - Clay County Planning Commission
Zoning enforced - Within the city of Manchester only
Subdivision regulations enforced - Within Manchester and 5 miles beyond the city
Local codes enforced - Building and housing within Manchester
Mandatory state codes enforced - Plumbing, National Fire Protection Association Code, National Building Code (for major buildings and residential construction containing more than 12 bedrooms per building.)
Other programs - Urban renewal, public housing, and neighborhood development program

Safety

<u>Police</u>	<u>Manchester</u>	<u>Clay County</u>
Total staff	4	3 full-time, 3 part-time
Radio-patrol cars	1	2
Other equipment	Intra-state radio communications network, regional radio communications network, 2 portable radios	Intra-state radio communications network, regional radio communications network. 1 portable radio

Fire

American Insurance Association Fire Rating	7	
Full-time staff	2	
Volunteers	35	40 (1 district)
Equipment:		
750 gpm pumper	1	
500 gpm pumpers	1	1
Other	Equipment van	

Rescue Service

Clay County Rescue Squad:
Number of volunteers - 7
Equipment - 1 panel truck, 1 station wagon, 3 boats, 3 motors, power saw, generator
Personnel training - First aid

Sanitation

	<u>Manchester</u>	<u>Clay County</u>
Type service	Municipal	Private
Fee charged:		
residential	\$2 per month	Contract
business	Contract	Contract
Collection frequency:		
residential	Twice weekly	When desired
business	When needed	When desired
Trash pickup	When needed	When desired
Disposal method	Landfill	Landfill



CLAY COUNTY
COURTHOUSE



CLAY COUNTY BOARD
OF EDUCATION

EDUCATION

Public Schools

	<u>Clay County</u>
Total Enrollment (1973-74)	5,552
Elementary	4,237
High School	1,315
Student-Teacher Ratio	29 - 1
Elementary	30 - 1
High School	29 - 1
Percent High School Graduates to College	31.0
Expenditures Per Pupil (1972-73)	\$460.04

Nonpublic Schools

	<u>Oneida Baptist Institute</u>	<u>Oneida Seventh Day Adventist</u>
Total Enrollment	225	20
Elementary		20
High School	225	
Student-Teacher Ratio	19-1	10-1
Elementary		10-1
High School	19-1	

Vocational Schools

Nearest State Schools

	Hazard State Vocational- Technical School	Somerset State Vocational- Technical School
Location	Hazard	Somerset
Miles Distant	55	56
Curriculum	Clerical Secretarial Practical Nursing Learning Lab Electronics (Industrial) Highway Technology Auto Body Repair	Data Processing Clerical Secretarial Marketing and Distributive Education Health Careers Learning Lab

(cont'd.)

Curriculum	Hazard State Vocational- Technical School	Somerset State Vocational- Technical School
	Auto Mechanics	Electronics (Technology)
	Carpentry	Aircraft Maintenance
	Commercial Foods	Technology
	Cosmetology	Appliance Repair
	Diesel Mechanics	Auto Mechanics
	Drafting	Drafting
	Electricity	Machine Shop
	Heavy Equipment	Printing
	Machine Shop	
	Mine Maintenance	
	Welding	

Nearest Area Education Center

Location	Clay County Area Vocational Education Center
Curriculum	Manchester
	Appliance Repair
	Auto Body Repair
	Auto Mechanics
	Carpentry
	Drafting
	Electricity
	Welding

Arrangements can be made to provide training in the specific production skills required by an industrial plant. Instruction may be conducted either in the vocational school or in the industrial plant, depending upon the desired arrangement and the availability of special equipment.

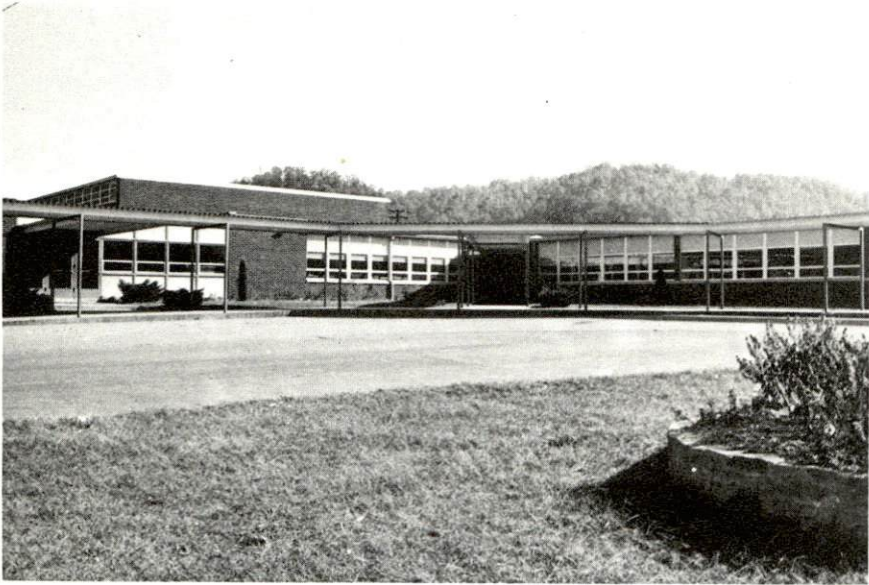
Colleges and Universities

<u>Name</u>	<u>Area - Within 70 miles</u>		<u>Highest Degree Conferred</u>
	<u>Location</u>	<u>Enrollment (Fall, 1973)</u>	
Berea College	Berea	1,340	Baccalaureate
Cumberland College	Williamsburg	1,716	Baccalaureate
Eastern Kentucky University	Richmond	11,088	Masters, Ph.D.*
Hazard Community College	Hazard	219	Associate
Lees Junior College	Jackson	267	Associate
Somerset Community College	Somerset	597	Associate
Sue Bennett College	London	228	Associate
Union College	Barbourville	861	Masters

*Cooperative program with the University of Kentucky, Lexington, for a Ph.D. in education only.



HACKER
ELEMENTARY
SCHOOL



HORSE CREEK
ELEMENTARY
SCHOOL



CLAY COUNTY
HIGH SCHOOL

HEALTH

Hospitals

<u>General Hospital</u>	<u>Location</u>	<u>Beds</u>
Manchester Memorial Hospital	Manchester	63

General hospital facilities - 1 operating room, 1 recovery room, 1 emergency room, OB section, X-ray, pediatrics, physical therapy, hydrotherapy, laboratory, blood bank, EKG, and extended care section

Medical staff - 5 physicians (including surgeon), 1 pediatrician, 1 pathologist, 1 radiologist, 16 registered nurses, and 12 licensed practical nurses

Nursing Homes

There are plans to construct a personal care home for the elderly in Manchester

Public Health

Facility - Clay County Health Center

Staff - 5 registered nurses, 2 public health nurses, 5 licensed practical nurses, 2 sanitarians, 5 home health aides, 2 social workers, 7 clerks, 1 janitor (all full time); 1 health officer, 1 health program coordinator, 1 health educator, 1 nursing supervisor, 1 nutritionist, 1 medical doctor, 1 dental clinician, 1 clerk, 1 janitor (all part time)

Budget 1973-74 - \$264,232

OTHER LOCAL FACILITIES

Communications

Telephone - Kentucky Telephone Company
Services - Standard

Telegraph - Western Union
Services - Standard

Postal - U. S. Post Office
Class - Second
Mail received - Once daily
Mail dispatched - Once daily

Newspapers - The Manchester Enterprise
Weekly and circulation - 5,200
Other papers received from - Lexington and Louisville, Kentucky;
Knoxville, Tennessee

Radio - WWXL AM-FM
Stations received from - Louisville, Lexington, London, Corbin, and
Covington, Kentucky; Cincinnati, Ohio

Television -
Cable service
Reception from - Lexington, Kentucky; Knoxville and Johnson City,
Tennessee; Bristol, Virginia; Asheville, North
Carolina
Kentucky Educational Television - Somerset transmitter - Channel 29

Library Services

Public library - Clay County Public Library
Size collection - 15,185 volumes
Circulation, 1973 - 143,465
Services - Bookmobile, records, record player, films, film projector,
magazines, newspaper, paintings, meeting room, adult education,
arts and crafts program, and right to read program

Religious Institutions

Number of churches - 12
Denominations - Baptist, Catholic, Christian, Church of God, Jehovah's
Witnesses, Mennonite, Pentecostal, Presbyterian, Seventh Day Ad-
ventist, United Methodist

Nearest Synagogues - Lexington, Kentucky
Congregations - Adath Israel (reform)
Ohavey Zion (traditional)

Financial Institutions

Statement as of December 31, 1973

<u>Banks</u>	<u>Assets</u>	<u>Deposits</u>
First National Bank	\$ 9,392,688.14	\$8,372,013.28
First State Bank	11,294,096.97	9,946,876.07

Hotels and Motels

Total number - 2
Units - 58

Clubs and Organizations

Business and Civic - Jaycees, Kiwanis, Ministerial Association, Red Cross, Clay County Development Association

Fraternal - American Legion, Masonic Lodge, VFW, Medical Society

Women's - Federated Woman's Club, Younger Women's Club, Homemakers

Youth - Little League, Boy Scouts, Brownies, Girl Scouts, 4-H, VICA, FFA

Other - Manchester Mental Health and Mental Retardation Association, Jackson-Clay Community Action Agency, Fish and Game Club, Fox Hunter's Club, Coon and Quail Club, Saddle Club, Sportsmen's Club, Senior Citizens Club, and The Turnabout Square Dance Group



MANCHESTER METHODIST CHURCH



MANCHESTER BAPTIST CHURCH



MANCHESTER CHRISTIAN CHURCH



ST. ANN CHURCH

RECREATION

Local

Public Recreation Facilities

Supervised program - During summer months

Park - 1

Playgrounds - 4 (School)

Swimming pool - 1

Tennis courts - 3

Baseball diamonds - 2

Other - Drag strip

Private Recreation Facilities

Swimming pool - 1

Movie theater - 1 (drive-in)

Tennis court - 1

Tourist Attractions

Daniel Boone National Forest

Area (Within 60 miles)

Buckhorn Lake State Resort Park

Cumberland Falls State Resort Park

Cumberland Gap National Historical Park

Dr. Thomas Walker State Shrine

Levi Jackson Wilderness Road State Park

Pine Mountain State Resort Park

AGRICULTURE - NATURAL RESOURCES - CLIMATE

Agriculture*

	<u>Clay County</u>	<u>Labor Market Area</u>
Total land area (acres)	303,360	1,885,760
Percent of area in farm land	32.0	26.4
Number of farms	794	5,469
Average size of farms (acres)	122.3	91.2
1969 value of all farm products	\$1,836,079	\$12,648,998
Value per farm	2,312	2,313
Total crop sales	1,326,873	6,899,602
Total livestock & livestock products	491,673	5,634,229
1972 agricultural production included:		
Burley tobacco (lbs.) (est.)	2,848,000	13,830,000
Corn for grain (bu.)	149,500**	900,800**
Cattle and calves (number)	5,100**	48,300**
Hogs and pigs (number)	2,000**	9,300**
Milk production, 1971 (lbs.)	3,640,000	41,880,000***

Natural Resources

Principal mineral resource	Coal
Other mineral resource	Natural gas
Acres of commercial forest land	247,000
Most abundant tree species	Red oak, white oak, hickory, yellow poplar, yellow pine, beech, and soft maple

*U. S. Department of Commerce, Bureau of the Census, Census of Agriculture, 1969. U. S. Department of Agriculture and Kentucky Department of Agriculture, Kentucky Agricultural Statistics, 1972.

**Preliminary figures.

***This figure does not include Bell, Leslie and Perry counties.

Climate*

Clay County

Temperature

Annual mean (40-year record)	59.7 degrees
Average annual 1973	59.2 degrees
Record highest, August, 1968 (13-year record)	99.0 degrees
Record lowest, January, 1966 (13-year record)	- 9.0 degrees
Normal heating degree days (30-year record)	3,478
(Heating degree day totals are the sums of negative departures of average daily temperatures from 65 degrees F.)	

Precipitation

Mean annual total (30-year record)	46.18 inches
Mean annual snow and sleet (31-year record)	13.00 inches
Total precipitation 1973	58.03 inches
Mean number days precipitation (.01 inch or more) (31-year record)	128
Average number days thunderstorms (31-year record)	48

Prevailing winds (14-year record) Northeast

*U. S. Department of Commerce, Environmental Science Services Administration, Climatological Data, 1973. Station of record: Knoxville, Tennessee.

HISTORY

Clay County is situated in the southeastern part of Kentucky and covers 474 square miles of territory. Red Bird Creek, which forms a portion of its southeastern boundary, flows north to join Goose Creek, creating the South Fork of the Kentucky River. Goose Creek bisects the county and flows in a northeasterly direction. The land surface is hilly to mountainous, and natural resources of coal and timber are abundant. Almost three-quarters of its area is forested with the greater part of it included in the Daniel Boone National Forest.

The first settler in Clay County was James Collins, who built a cabin near the mouth of Collins Creek in 1798 and extracted salt from a salt spring there. James and Daugherty White of Virginia and several others soon came and opened a salt works on Garrard Creek, where Indians had been producing salt for generations. James White's purchase of this land provided a source of great wealth for the White family. James Garrard, the second Governor of Kentucky, successfully developed salt wells on Buffalo Lick during the heyday of Kentucky salt production.

In 1806, Clay became Kentucky's forty-seventh county, named for General Green Clay, a Virginian who migrated to Kentucky and became a surveyor and large land owner. Clay was a delegate to the Virginia Legislature before Kentucky became a state and helped write Kentucky's second constitution. Since its original formation, Clay County was carved up several times to help form other counties.

A rock formation in the county known as Town Rocks has a number of underground alleys which were used to hide valuables, livestock and slaves during the Civil War. Burning Springs is the site of a natural flow of gas that burned with a steady flame for many years after its discovery in 1798.

Manchester, the county seat, became the county's leading trade center early in its history. It was named for the great manufacturing city of Manchester, England. In 1970 it had a population of 1,664.

Clay County had a population of 2,398 in 1810 and had grown by 1950 to 23,116. There was a subsequent decline, however, to 20,748 in 1960 and 18,481 in 1970.

Agriculture accounted for 490 of the county's 3,680 employed in 1972 with burley tobacco, corn, cattle, hogs, and milk the principal products.

Manufacturing employment totaled 225 in 1972. Largest of the county's firms are: Etawah Manufacturing Company, which produces small electrical appliances and cookware; S. M. K. Corporation, which makes ladies' robes, and Boone Boy Industries, which produces upholstered furniture.

Many of Clay County's distinguished citizens have been members of the Garrard and White families. James Garrard was the only Kentucky Governor elected to two successive terms. Bert T. Combs, Governor of Kentucky from 1959 to 1963 and then United States District Court Judge, was born in Clay County.