

1976

Industrial Resources: Clinton County - Albany

Kentucky Library Research Collections
Western Kentucky University, spcol@wku.edu

Follow this and additional works at: https://digitalcommons.wku.edu/clinton_cty

 Part of the [Business Administration, Management, and Operations Commons](#), [Growth and Development Commons](#), and the [Infrastructure Commons](#)

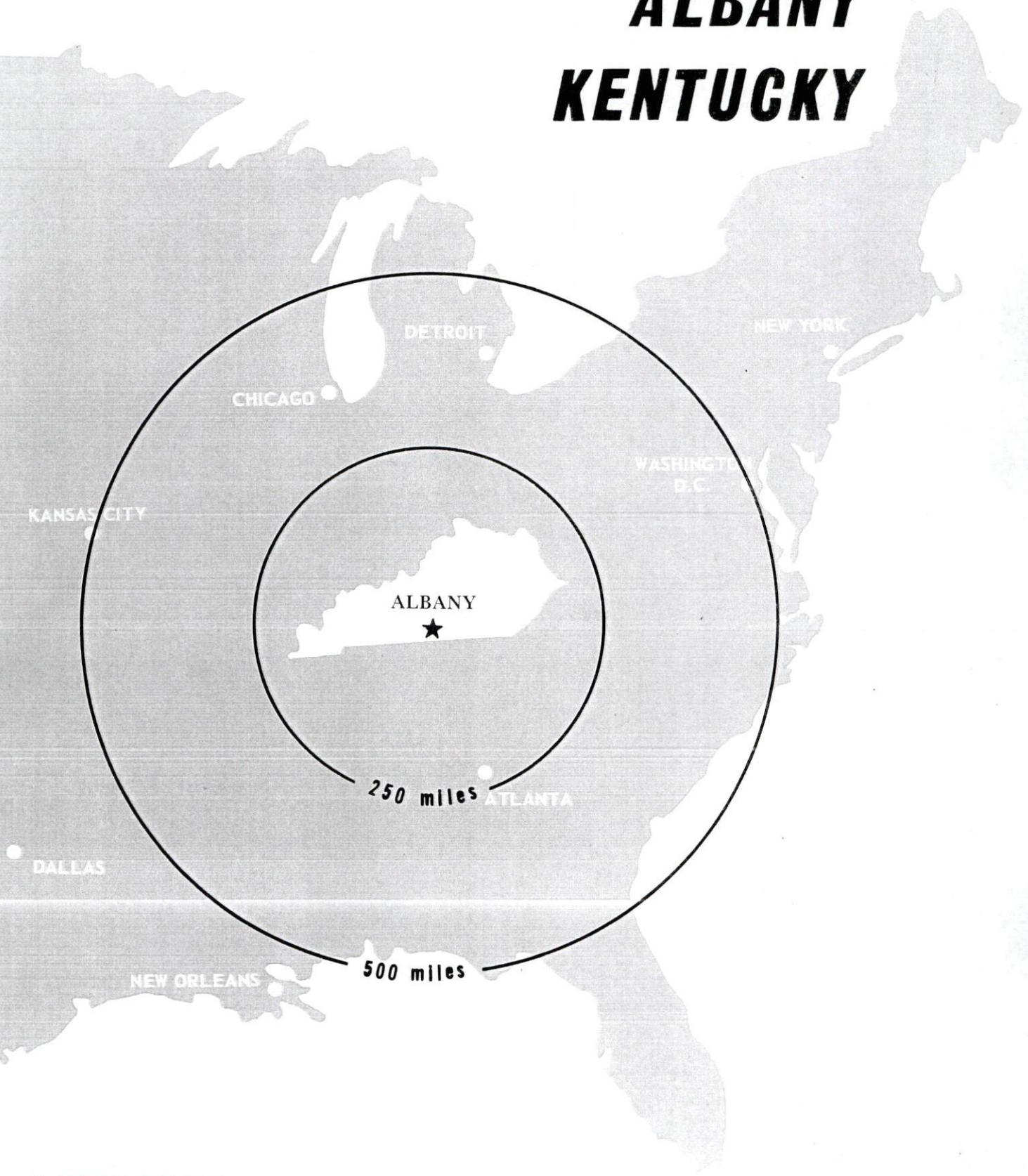
Recommended Citation

Kentucky Library Research Collections, "Industrial Resources: Clinton County - Albany" (1976). *Clinton County*. Paper 8.
https://digitalcommons.wku.edu/clinton_cty/8

This Report is brought to you for free and open access by TopSCHOLAR®. It has been accepted for inclusion in Clinton County by an authorized administrator of TopSCHOLAR®. For more information, please contact topscholar@wku.edu.

INDUSTRIAL RESOURCES

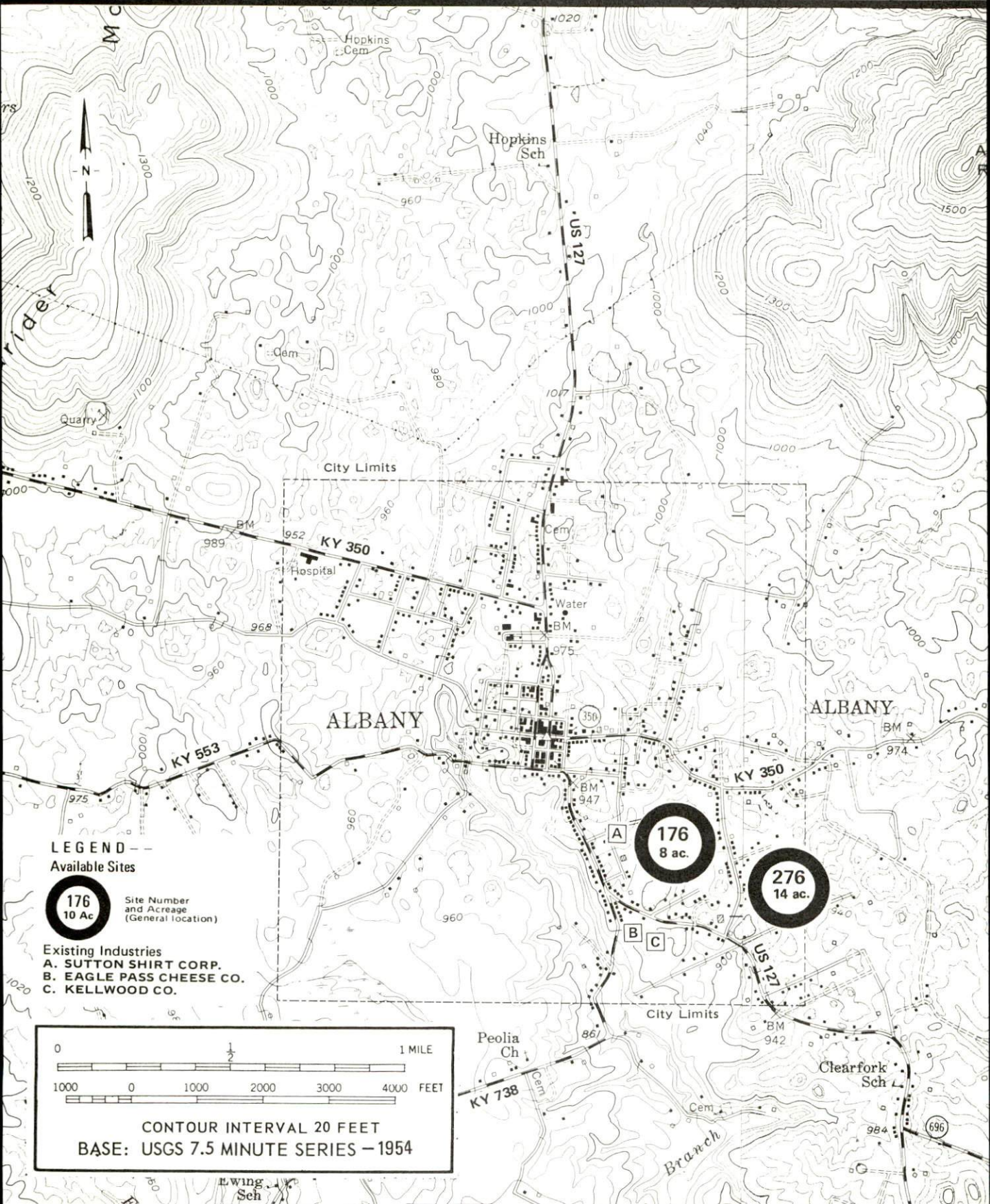
ALBANY KENTUCKY



CLINTON COUNTY, KENTUCKY

ALBANY, KENTUCKY --- Index to Industrial Sites --- 1976

For detailed data on individual sites, contact Mr. Harold Reeves, c/o Reeves Motor Company, Tennessee Road, Albany, Kentucky 42602, or the Industrial Development Division, Kentucky Department of Commerce, Capital Plaza Tower, Frankfort, Kentucky 40601.



INDUSTRIAL RESOURCES

ALBANY, KENTUCKY

Prepared by

The Kentucky Department of Commerce

in cooperation with

The City of Albany

1976

This copy has been prepared by the Kentucky Department of Commerce, Division of Research and Planning, and the cost of printing paid from state funds.

Production Supervisor
Patsy Wallace

Research
Robert McNeil Shipley

Clerical
Dorothy Tierney

Graphics
N. C. Montague
Frank Ferrante
Tony Cecconi

Cartography
Site Development Section

TABLE OF CONTENTS

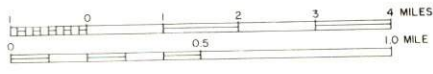
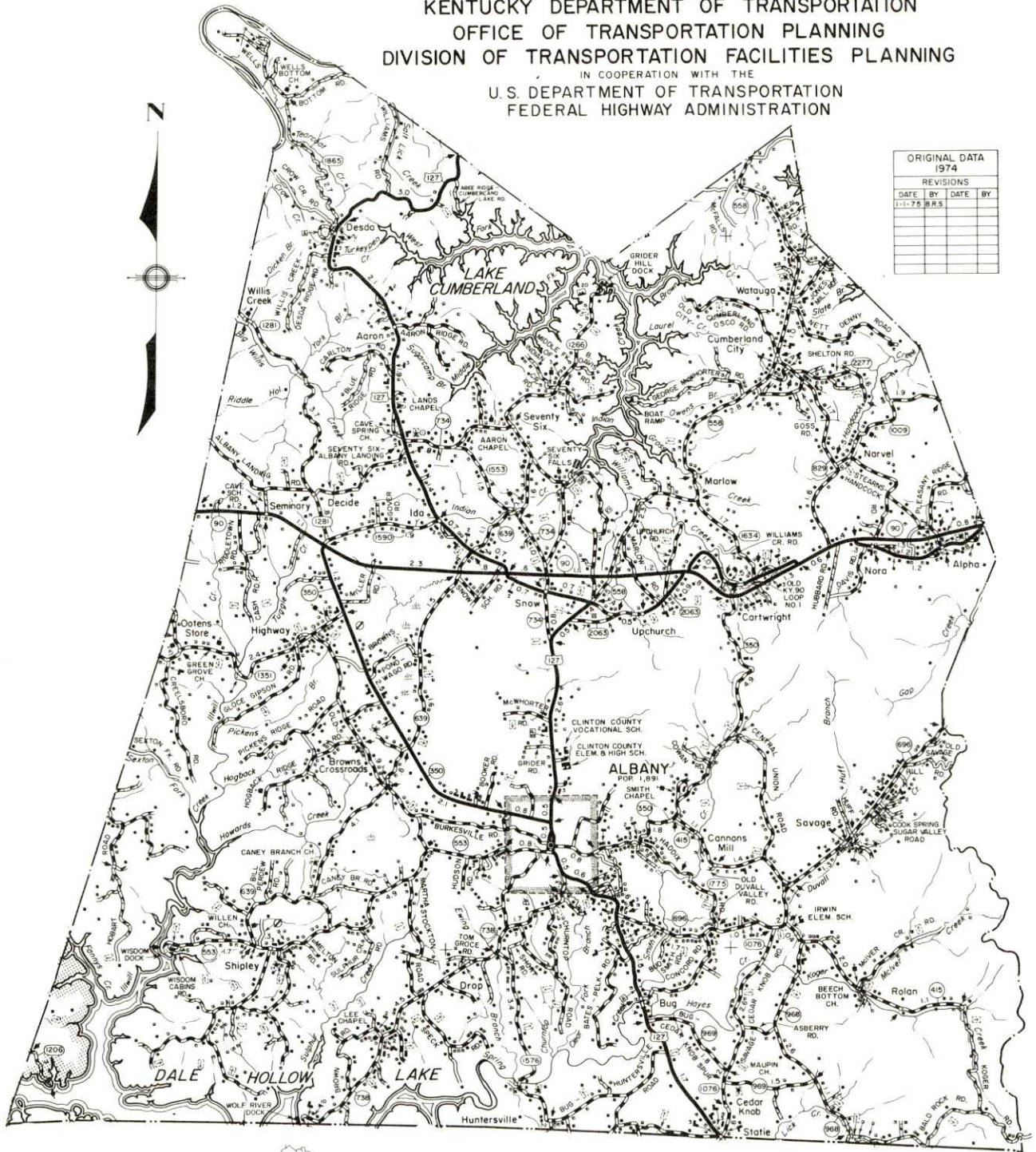
<u>Chapter</u>	<u>Page</u>
INDUSTRIAL SITES	i
ALBANY, KENTUCKY - A RESOURCE PROFILE	1
THE LABOR MARKET AREA	3
Population.	3
General Employment Characteristics, 1974.	3
Manufacturing Employment by Industry.	5
Albany Manufacturing Firms, Their Products and Employment	5
Labor Organizations	6
Estimated Male Labor Supply	6
Estimated Female Labor Supply	6
Wages	7
Per Capita Personal Income.	8
TRANSPORTATION.	9
Rail	9
Highways	9
Truck Service	9
Air.	10
Bus.	10
Taxi	10
Rental Services	10
POWER AND FUEL.	11
Electricity	11
Natural Gas	11
Other Fuels	12
WATER AND SEWERAGE	13
Water.	13
Sewerage	14
CLIMATE	15

<u>Chapter</u>	<u>Page</u>
LOCAL GOVERNMENT.	16
City	16
County	16
Assessed Value of Property, 1975	16
Property Taxes	16
Local Property Tax Rate Per \$100 of Assessed Valuation, 1975	17
Planning and Zoning	17
Safety	17
Police	17
Fire	17
Rescue Service	17
Solid Waste	18
EDUCATION	19
Public Schools	19
Area Colleges and Universities	19
Vocational Schools	21
HEALTH	23
Local Medical Personnel	23
Hospitals	23
Other Medical Facilities	23
Ambulance Service	23
Nursing Homes	23
Public Health	23
OTHER LOCAL FACILITIES	24
Communications	24
Library Services	24
Religious Institutions	26
Financial Institutions	26
Hotels and Motels	26
Clubs and Organizations	26
RECREATION	27
COMMUNITY IMPROVEMENTS	28
HISTORY	30

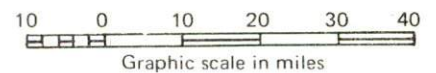
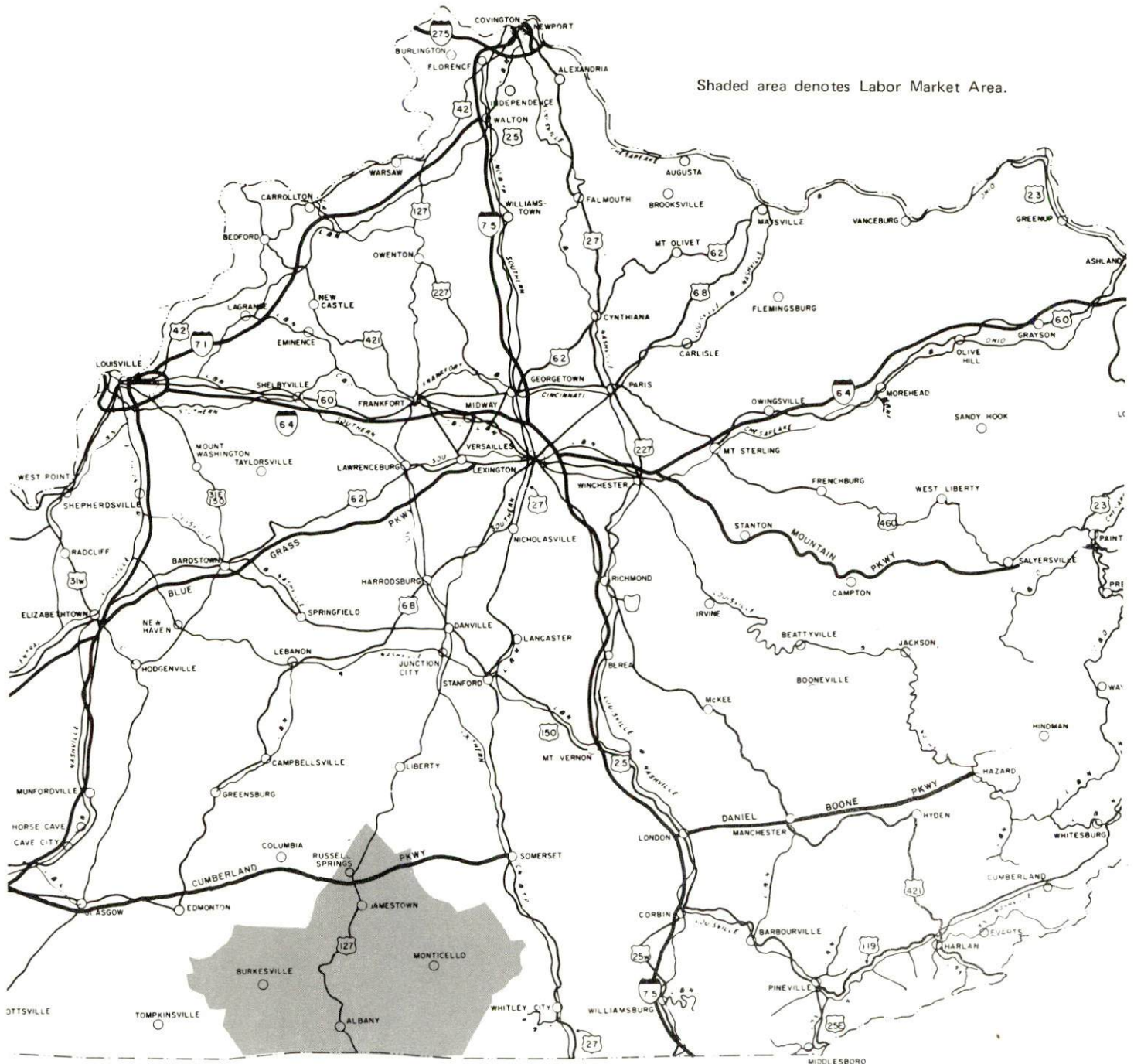
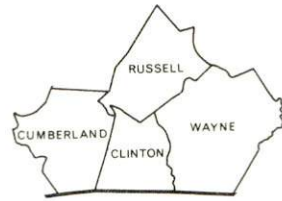
GENERAL HIGHWAY MAP CLINTON COUNTY KENTUCKY

PREPARED BY THE
KENTUCKY DEPARTMENT OF TRANSPORTATION
OFFICE OF TRANSPORTATION PLANNING
DIVISION OF TRANSPORTATION FACILITIES PLANNING
IN COOPERATION WITH THE
U. S. DEPARTMENT OF TRANSPORTATION
FEDERAL HIGHWAY ADMINISTRATION

ORIGINAL DATA 1974			
REVISIONS			
DATE	BY	DATE	BY
1-1-75	BRS		



ALBANY LABOR MARKET AREA



ALBANY, KENTUCKY - A RESOURCE PROFILE

Albany, the county seat of Clinton County, is located in south central Kentucky, only 6 miles from the Kentucky-Tennessee state line. The city is 110 miles from Knoxville, Tennessee; 130 miles from Nashville, Tennessee; and 151 miles from Louisville, Kentucky. Albany had an estimated population of 2,039 in 1973.

Clinton County lies in the Mississippian Plateau physiographic region of south central Kentucky in the foothills of the Cumberland Mountain Range. It covers 190 square miles and had an estimated population of 8,700 in 1974. Clinton County has become a popular resort area since the construction of Lake Cumberland and Dale Hollow Reservoir, portions of which lie within the county. Numerous fishing camps, motels, and cottages have sprung up along the shores of these lakes.

The Economic Framework

The total number of Clinton County residents employed in 1974 averaged 3,540, including 425 in agriculture and 550 in government. Manufacturing employers in the county reported 840 workers; trade and services firms employed 510. Major industrial products are men's and boys' dress and sport shirts.

Total unemployment in Clinton County averaged 5.2 percent of the labor force in 1974.

Per capita personal income in the county in 1973 was \$2,587, an increase of 79.2 percent since 1969.

The Albany labor market area includes Clinton, the three adjoining Kentucky counties, and Pickett County in Tennessee. The total number of residents in the Kentucky portion of the labor market area employed in 1974 averaged 16,850, including 2,800 in agriculture and 2,190 in government. Manufacturing employers in the Kentucky portion of the labor market area reported 3,380 workers; trade and services firms employed 2,100.

Resources for Growth

1. Labor Supply - There is a current estimated labor supply of 2,840 men and 2,410 women available for jobs in the Kentucky portion of the labor market area. In addition, 2,020 young men and 1,920 young women in this area will become 18 years of age by 1981 and potentially available for work. The current labor supply would be supplemented by the number of men and women in the adjoining Tennessee county who are available for industrial jobs.

2. Transportation - Albany is served by U. S. Highway 127. The Cumberland Parkway lies just 34 miles to the north. Four trucking companies serve Albany. Rail services (the Southern Railway System) are available at Somerset, Kentucky, 52 miles to the northeast. The closest piggyback facilities are available at Danville, Kentucky, 45 miles northwest of Somerset. The Albany Airport is equipped with a 2,400-foot turf runway which can handle light aircraft. A new private airport is planned which would, if constructed, have a 3,500-foot paved runway, lighting, and all necessary fuel services. The nearest commercial air service is located at the London-Corbin Airport near London, 90 miles northeast of Albany.

3. Power and Fuel - The South Kentucky Rural Electric Cooperative Corporation provides electric power to Albany and Clinton County. Its source of supply is the East Kentucky Power Cooperative. Albany is served by three propane and butane distributors and five distillate fuel oil distributors. There is no commercial natural gas service to Albany and Clinton County.

4. Education - All primary and secondary schools are consolidated into the Clinton County School System. There are no nonpublic schools in the county. Clinton County is located within 87 miles of two universities, three senior colleges, two junior colleges, and one community college. The Somerset State Vocational-Technical School at Somerset, 52 miles northeast of Albany, offers training in fifteen areas. The Clinton County Area Vocational Education Center at Albany offers six areas of study.

THE LABOR MARKET AREA

POPULATION

<u>Area</u>	<u>1974*</u>	<u>1970</u>	<u>Percent Nonwhite</u>
			<u>1970</u>
Albany	2,039**	1,891	0.6
Labor Market Area	42,700	39,834	
Clinton County	8,700	8,174	0.4
Cumberland County	6,900	6,850	6.5
Russell County	11,600	10,542	0.8
Wayne County	15,500	14,268	2.7

*Provisional Estimates.

**1973 Population Estimates.

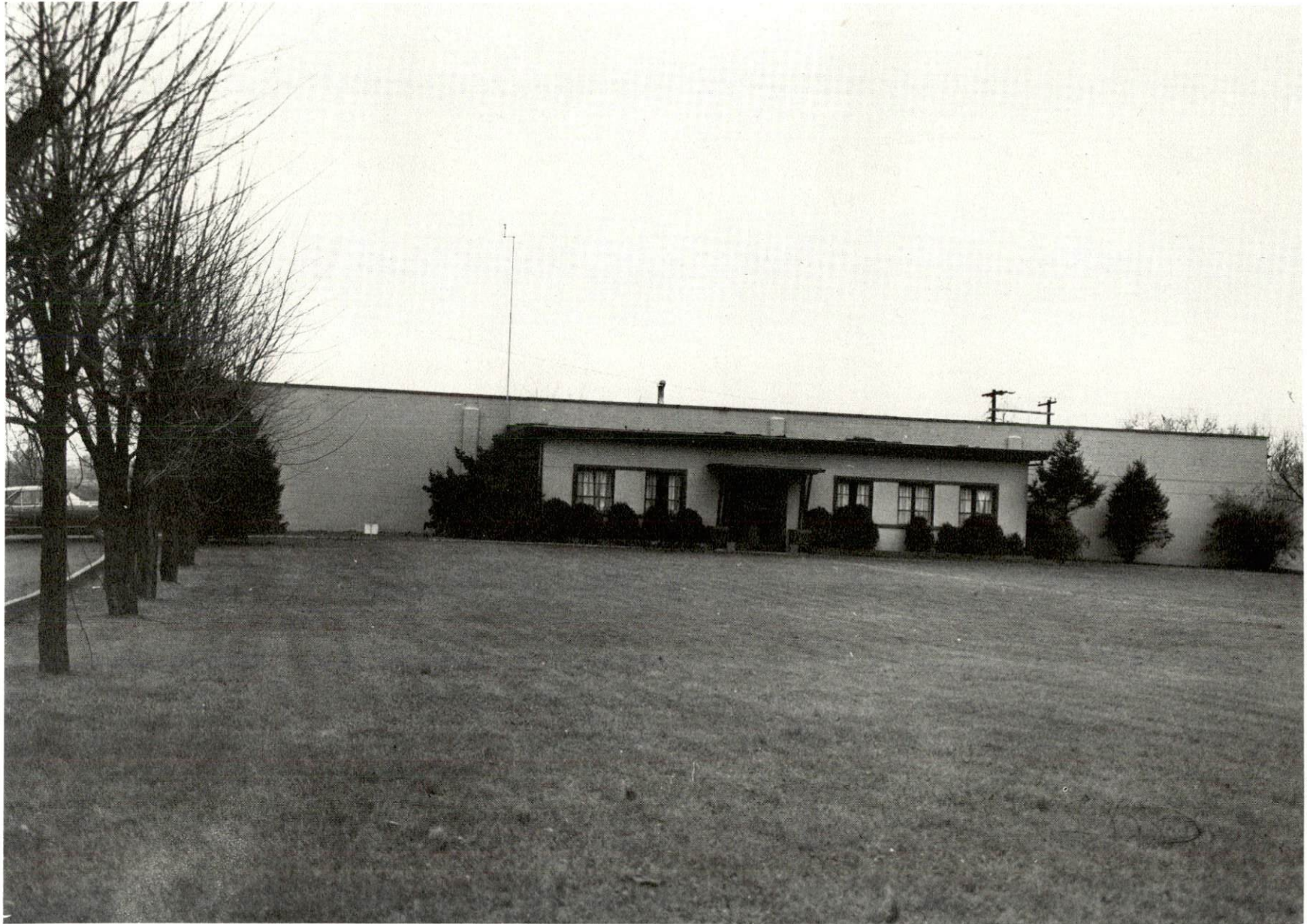
Sources: U. S. Department of Commerce, Bureau of the Census, Census of Population, 1970. U. S. Bureau of the Census, Current Population Reports, Series P-25, No. 562, June 1975; Series P-26, No. 120, June 1975.

GENERAL EMPLOYMENT CHARACTERISTICS, 1974

<u>Major Employment Group</u>	<u>Employment by Place of Residence of Workers</u>	
	<u>Clinton County</u>	<u>Labor Market Area</u>
	Total Employment	3,538
Agriculture	425	2,797
Government	550	2,191

<u>Major Employment Group</u>	<u>Employment by Location of Jobs</u>	
	<u>Clinton County</u>	<u>Labor Market Area</u>
	Manufacturing	843
Trade and Services	513	2,098

Source: Kentucky Department for Human Resources, Bureau for Administration and Operations.



KELLWOOD COMPANY

MANUFACTURING EMPLOYMENT BY INDUSTRY
SEPTEMBER 1974

<u>Industry</u>	<u>Clinton County</u>	<u>Labor Market Area</u>
TOTAL	848	3,405
Food & Kindred Products	25	63
Apparel, Textiles, Leather	730	2,472
Lumber, Furniture	81	658
Printing & Publishing, Paper	4	23
Chemicals, Petroleum & Coal, Rubber	0	2
Stone, Clay & Glass	0	4
Primary Metals	0	125
Machinery, Metal Products, Equipment	8	58

Source: Kentucky Department for Human Resources, Number of Workers in Manufacturing Industries Covered by Kentucky Unemployment Insurance Law Classified by Industry and County, September, 1974.

ALBANY MANUFACTURING FIRMS,
THEIR PRODUCTS AND EMPLOYMENT

<u>Firm (Establishment date)</u>	<u>Product</u>	<u>Employment</u>		
		<u>Total</u>	<u>Male</u>	<u>Female</u>
Albany Mills (1908)	Flour, corn meal, feed	4	4	0
Burnett Timber Products, Inc. (1968)	Lumber, wood chips, veneer logs	27	26	1
Cumberland Charcoal Corporation (1963)	Charcoal	9	9	0
Eagle Pass Cheese Company (1955)	Cheddar cheese, dried whey, cream	32	29	3
Gibson Printing Company (1949)	Newspaper, job printing	4	3	1
Kellwood Company (1955)	Boys' shirts	208	20	188
McWhorter Brothers Feed Mills	Feed	1		
Neal Lumber Company, Inc. (1962)	Lumber, crossties, tobacco sticks	13	12	1
Sutton Shirt Corporation (1964)	Men's and boys' dress shirts	565	55	510
Twin Lakes Manufacturing, Inc. (1974)	Fiberglass sport and fishing boats	12	8	4

Source: Kentucky Department of Commerce, 1976 Kentucky Directory of Manufacturers.

LABOR ORGANIZATIONS

There are no labor organizations representing manufacturing workers in Clinton County.

ESTIMATED MALE LABOR SUPPLY ALBANY LABOR MARKET AREA

<u>Area</u>	Current			Future	
	<u>Total</u>	<u>Not in Labor Force</u>	<u>Unemployed</u>	<u>Under- employed</u>	<u>Reaching 18 yrs. of age before 1981</u>
Labor Market					
Area	2,840	1,080	840	920	2,019
Clinton	550	120	150	280	423
Cumberland	290	0	110	180	370
Russell	1,480	960	300	220	470
Wayne	520	0	280	240	756

Sources: Kentucky Department for Human Resources, Kentucky Labor Supply Estimates by County, 1975. Kentucky Department of Commerce, Future Labor Supply before 1981.

ESTIMATED FEMALE LABOR SUPPLY ALBANY LABOR MARKET AREA

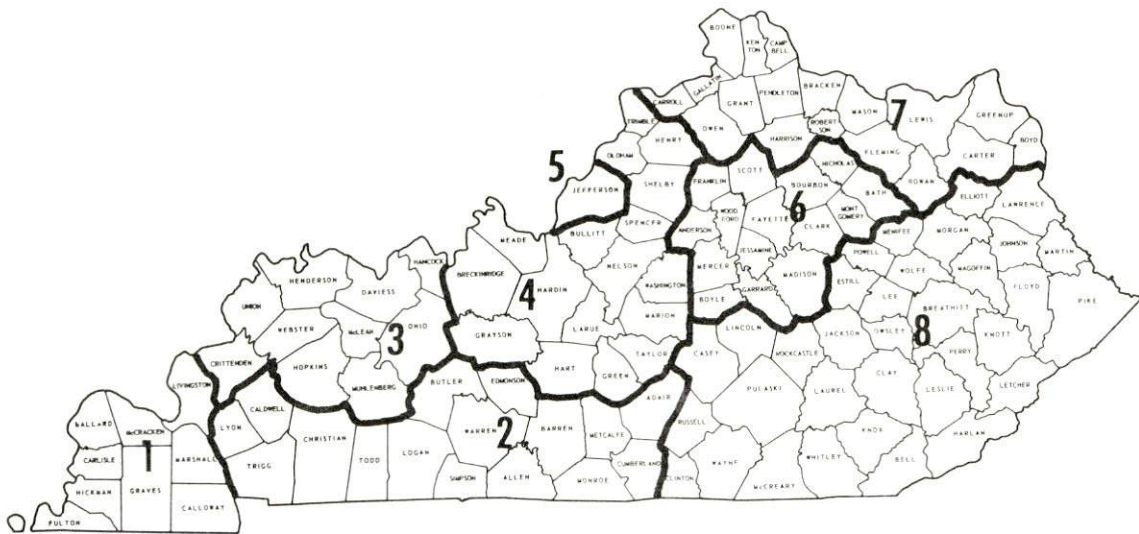
<u>Area</u>	Current			Future	
	<u>Total</u>	<u>Not in Labor Force</u>	<u>Unemployed</u>	<u>Under- employed</u>	<u>Reaching 18 yrs. of age before 1981</u>
Labor Market					
Area	2,410	1,500	280	630	1,923
Clinton	240	0	50	190	360
Cumberland	150	0	40	110	315
Russell	1,190	890	100	200	479
Wayne	830	610	90	130	769

Sources: Kentucky Department for Human Resources, Kentucky Labor Supply Estimates by County, 1975. Kentucky Department of Commerce, Future Labor Supply before 1981.

WAGES

Occupational wage rates for specific industries are usually not available to most government agencies, and wage data furnished to state employment agencies by industrial employers is protected from disclosure by federal law. The most reliable up-to-date wage information can be obtained by direct contact with local employers.

Associated Industries of Kentucky, a voluntary organization of Kentucky businesses, regularly collects occupational wage rates and fringe benefits data from participating member firms. Data is compiled for over 130 clearly defined office, production, and service occupations. Tabulations are published for eight regions of Kentucky, as shown on the map below. It should be noted that the data may be weighted by the preponderance of firms in the larger cities and may be somewhat higher than the rates paid in the smaller communities. Data from these tabulations are available, upon request, from the Kentucky Department of Commerce, Frankfort, Kentucky 40601.



Associated Industries of Kentucky Area Wage Surveys

PER CAPITA PERSONAL INCOME

<u>Area</u>	<u>1973</u>	<u>1969</u>	<u>Percent Change</u>
Clinton County	\$2,587	\$1,444	+79.2
Labor Market Area Range	\$2,244 - 2,587	\$1,333 - 2,019	N.A.
Kentucky	4,050	2,894	+39.9
U. S.	5,041	3,733	+35.1

Sources: U. S. Department of Commerce, Office of Business Economics, Survey of Current Business, August, 1974. U. S. Department of Commerce, Bureau of Economic Analysis, April, 1975.

TRANSPORTATION

Rail

Nearest line serving Albany - Southern Railway System at Somerset, Kentucky, 52 miles northeast of Albany

Services - Two northbound and two southbound freights daily, 30 through freights daily, switching facilities, siding space for 14 cars; nearest piggyback facilities available at Danville, Kentucky, 45 miles northwest of Somerset

For details on routing, schedules, rates, and services, contact:

District Sales Manager
Southern Railway System
701 South Broadway
Lexington, Kentucky 40508
(606) 255-2461

Highways

Albany is served by U. S. Highway 127. The Cumberland Parkway (toll road) lies 34 miles to the north.

Truck Service

Company

Home Office

Eagle Express Company, Inc.

P. O. Box 679

Somerset, Kentucky 42501

Eldridge Truck Line

North Highway 27

Somerset, Kentucky 42501

Manning Motor Express, Inc.

1203 South Green Street

Glasgow, Kentucky 42141

Monticello-Albany Freight Lines,
Inc.

160 South Main Street

Monticello, Kentucky 42633

Other Freight Services

Nearest Shipping Center

United Parcel Service

Campbellsville, Kentucky, 67 miles
northwest of Albany

HIGHWAY MILES AND TRUCK TRANSIT TIME IN DAYS FROM
ALBANY, KENTUCKY, TO SELECTED MARKET CENTERS

City	Delivery		City	Delivery	
	Highway Miles	Time TL		Highway Miles	Time TL
Atlanta, Ga.	303	2	Los Angeles, Calif.	2,177	4
Birmingham, Ala.	326	2	Louisville, Ky.	151	1
Chicago, Ill.	443	2	Nashville, Tenn.	130	2
Cincinnati, Ohio	198	1	New Orleans, La.	668	3
Cleveland, Ohio	445	2	New York, N. Y.	857	3
Detroit, Mich.	457	2	Pittsburgh, Pa.	488	2
Knoxville, Tenn.	110	1	St. Louis, Mo.	414	2

Source: Delivery Time Only - Eagle Express Company, Inc., P. O. Box 679, Somerset, Kentucky 42501

Air

	<u>Local</u>	<u>Nearest Commercial</u>
Location:	Albany Airport 6 miles west of Albany	London-Corbin Airport 3 miles south-southeast of London, and 90 miles northeast of Albany
Runways:	One turf	One paved
Length:	2,400 feet	6,000 feet
Traffic		
Control:	Wind sock	Wind sock
Lighting:	None	Beacon, runway and obstruction lights
Services:	Tie down, 80 octane gasoline if emer- gency exists	Piedmont Airlines, 80 and 100 octane, JP-A-50, taxi, car rental, weather service, flight training, charter and ambulance service, vending machines
Air Freight		
Service:		Freight accepted on a space available basis

Bus - C and C Bus Line - daily service except Thursdays and Sundays
for passengers and freight between Albany and Chattanooga,
Tennessee

Taxi - Four companies - 24-hour service

Rental Services - Auto and truck rentals

POWER AND FUEL

Electricity

Company serving Albany and Clinton County - South Kentucky RECC

Source of power - East Kentucky Power Cooperative

Total generating capacity - 496,000 KW

For industrial rates contact:

Industrial Development Division
East Kentucky Power Cooperative
P. O. Box 707
Winchester, Kentucky 40391
(606) 744-4812

and/or

South Kentucky RECC
P. O. Box 910
Somerset, Kentucky 42501
(606) 678-4121

Natural Gas

There is no commercial natural gas service in Clinton County.

Other Fuels

Propane and butane

Albany Gas and Electric Service, Washington Street
Albany, Kentucky 42602
Suburban Propane, 104 Albany Route
Monticello, Kentucky 42633, 23 miles from Albany
Doxol Propane-Williams Energy Company, West Main Street
Glasgow, Kentucky 42141, 56 miles from Albany

Fuel oils

Distillate fuel oil -

Wisdom Oil Company (bulk plant), 100 Burkesville Road
Albany, Kentucky 42602
Standard Oil Company (bulk plant), 608 North Main Street
Monticello, Kentucky 42633, 23 miles from Albany
Super Test Oil Company, Inc. (bulk plant), South Main Street
Monticello, Kentucky 42633
Lewis J. Heber Oil Company, Inc. (Texaco bulk plant)
Walnut Street, Burnside, Kentucky 42519, 44 miles
from Albany
Somerset Oil Company (bulk plant), South Highway 90
Monticello, Kentucky 42633

Residual fuel oil - Arrangements must be made with the refinery.

Low sulphur content coal - Available in Kentucky.

WATER AND SEWERAGE

Water

Company serving Albany - Albany Water System*
204 Cross Street
Albany, Kentucky 42602
(606) 387-6011

Source - Lake Cumberland
Treatment plant capacity - 400,000 gpd
Average daily consumption - 350,000 gallons
Peak daily consumption - At capacity
Type treatment - Alum, chlorination, fluoridation, lime
Storage capacity - 300,000 gallons
Size lines - 8, 6, and 4 inches
Average pressure - 50 psi
Average temperature - 60 degrees F.

MONTHLY WATER RATES FOR WHOLESALE AND INDUSTRIAL CONSUMERS

First	3,000 gallons	\$3.90 (Minimum charge)
Next	2,000 gallons	.78 per M gallons
Next	5,000 gallons	.65 per M gallons
Next	10,000 gallons	.52 per M gallons
All over	20,000 gallons	.46 per M gallons

Tap-on charge: \$100

Surface water sources - Lake Cumberland, Dale Hollow Reservoir, and the Cumberland River
Average discharge - Cumberland River near Rowena, Kentucky, in neighboring Russell County - 35 years, 9,010 cfs, adjusted for storage
Expected ground water yield - 5 to 50 gpm in central and southern portions of the county; 5 gpm or less in northern part and southwestern tip of the county

*A plan for a 1,000,000 gallon per day water treatment plant and four new elevated storage tanks - one of 500,000 gallons and three of 25,000 gallons each - has been submitted to the Department for Natural Resources.

Sewerage

Company serving Albany - Albany Sewer System*
204 Cross Street
Albany, Kentucky 42602
(606) 387-6011

Design capacity - 200,000 gpd
Average daily flow - At capacity
Treatment - Primary
Type treatment - Clarification and drying beds
Treated effluent discharged into - Hancock Creek
Size of sanitary mains - 12, 10, and 8 inches
Rates - 50 percent of monthly water bill
Tap-on charge: None at present

*A 201 Facilities Plan is underway to improve community sewerage services.

CLIMATE

Clinton County

Temperature

Annual mean (30-year record)	59.7 degrees
Average annual 1974	60.1 degrees
Record highest, August, 1968 (14-year record)	99.0 degrees
Record lowest, January, 1966 (14-year record)	- 9.0 degrees
Normal heating degree days (30-year record)	3,478
(Heating degree day totals are the sums of negative departures of average daily temperatures from 65 degrees F.)	

Precipitation

Mean annual total (30-year record)	46.18 inches
Mean annual snowfall (32-year record)	12.80 inches
Total precipitation 1974	59.33 inches
Mean number days precipitation (.01 inch or more) (32-year record)	128
Average number days thunderstorms (32-year record)	48

Prevailing Winds (14-year record)

Northeast

Relative Humidity (14-year record)

1 a. m.	78 percent
7 a. m.	84 percent
1 p. m.	58 percent
7 p. m.	62 percent

Source: U. S. Department of Commerce, Environmental Science Services Administration, Climatological Data, 1974. Station of record: Knoxville, Tennessee.

Local Property Tax Rate Per \$100 of Assessed Valuation, 1975*

<u>Taxing Jurisdiction</u>	<u>Albany</u>	<u>Clinton County</u>
County	\$.174	\$.174
School	.394	.394
City	.213	

Planning and Zoning

There is presently no planning and zoning commission in Albany or Clinton County.

Mandatory state codes enforced - Plumbing, National Fire Protection Association Code, National Building Code (for major buildings and residential construction containing more than 12 bedrooms per building)

Safety

<u>Police</u>	<u>Albany</u>	<u>Clinton County</u>
Total staff	3	3
Radio-patrol cars	1	2

Fire

American Insurance Association Fire Rating	8
Volunteers	16

Rescue Service

Clinton County Rescue Squad:

Number of volunteers - 50

Equipment - Dragging equipment, six boats and motors, two station wagons, portable power generators

Personnel training - First Aid, scuba diving

*Kentucky Department of Revenue, Kentucky Property Tax Rates, 1975.

Solid Waste

	<u>Albany</u>	<u>Clinton County</u>
Type service	Private	Private
Fee charged:		
residential	\$3.50 per month	\$4.00 per month
business	According to volume	According to volume
industrial	According to volume	According to volume
Collection frequency:		
residential	Weekly	Weekly
business	Daily	Daily
industrial	Daily	Daily
Trash pickup	None	*
Disposal method	Sanitary landfill	Sanitary landfill

*Four men have been hired under the federal Emergency Employment Act to serve as an environmental cleanup crew.

EDUCATION

Public Schools

	<u>Clinton County</u>
Total Enrollment (Fall, 1975)	1,840
Elementary	967
High School	873
Student-Teacher Ratio	20-1
Elementary	19-1
High School	21-1
Percent High School Graduates to College	23.0
Expenditures Per Pupil (1974-75)	\$647.93
Bonded Indebtedness, June 30, 1975	\$994,000.00

Area Colleges and Universities

<u>Name</u>	<u>Location</u>	<u>Distance (Miles)</u>	<u>Enrollment (Fall, 1975)</u>	<u>Highest Degree Conferred</u>
Lindsey Wilson Junior College	Columbia	46	354	Associate
Tennessee Tech University	Cookeville, Tennessee	49	7,059*	Academic and Professional
Somerset Com- munity College	Somerset	52	776	Associate
Campbellsville College	Campbellsville	65	711	Baccalaureate
Cumberland College	Williamsburg	77	1,751	Baccalaureate
Western Kentucky University	Bowling Green	83	13,040	Masters, Ph. D. **
Centre College	Danville	85	775	Baccalaureate
Sue Bennett Junior College	London	87	211	Associate

*Enrollment (Fall, 1973).

**Cooperative program with the University of Kentucky, Lexington, for a Ph. D. in education only.



CLINTON COUNTY HIGH SCHOOL

Vocational Schools

	<u>Nearest State School</u>	<u>Nearest Area Education Center</u>
Location	Somerset State Vocational- Technical School	Clinton County Area Vocational Education Center
Miles Distant	Somerset	Albany
Curriculum	52 Accounting Junior Management Clerical Data Processing Secretarial Health Careers Industrial Education Aircraft Maintenance Tech. Appliance Repair Auto Body Repair Auto Mechanics Diesel Mechanics Drafting Electronics Graphic Arts (Printing) Machinist Welding	Business and Office Health and Personal Services Industrial Education Auto Mechanics Building Trades Industrial Electricity Welding

Arrangements can be made to provide training in the specific production skills required by an industrial plant. Instruction may be conducted either in the vocational school or in the industrial plant, depending upon the desired arrangement and the availability of special equipment.



CLINTON COUNTY WAR MEMORIAL HOSPITAL

HEALTH

Local Medical Personnel

Physicians - 4
Dentists - 2

Hospitals

<u>General Hospital</u>	<u>Location</u>	<u>Beds</u>
Clinton County War Memorial Hospital	Albany	42

General hospital facilities - Obstetrics unit, X-ray unit, emergency room, delivery room, coronary care unit, laboratory, fluoroscope, nursery, pharmacy

Medical staff - 5 medical doctors, 10 registered nurses, 7 graduate licensed practical nurses, one fluoroscope-X-ray technician (part time)

Other Medical Facilities

Clinton County Comprehensive Care Center

Ambulance Service

Name - Clinton County Ambulance Service

Staff - Two Emergency Medical Technicians and four presently training to become EMTs

Service - Emergency Medical System - county-wide

Equipment - One new modular ambulance; one hearse-type ambulance; 18-hour oxygen supply for two people; all standard medical equipment

Nursing Homes

	<u>Number</u>	<u>Beds</u>
Personal care home	1	52

Public Health

Facility - Clinton County Health Center

Staff - Registered nurse, health environmentalist, clerk

OTHER LOCAL FACILITIES

Communications

Telephone - General Telephone Company
Services - Standard

Telegraph - Nearest service at Somerset

Postal - U. S. Post Office
Class - First
Mail received - Once daily
Mail dispatched - Once daily

Newspapers - The Clinton County News
Weekly and circulation - 3,200
Other papers received from - Louisville, Somerset, and Lexington,
Kentucky; Knoxville, Nashville, and Chattanooga, Tennessee

Radio - WANY-AM
Stations received from - Jamestown, Monticello, Lexington, Louisville,
and Somerset, Kentucky; Knoxville, Nashville, Livingston, and
Jamestown, Tennessee

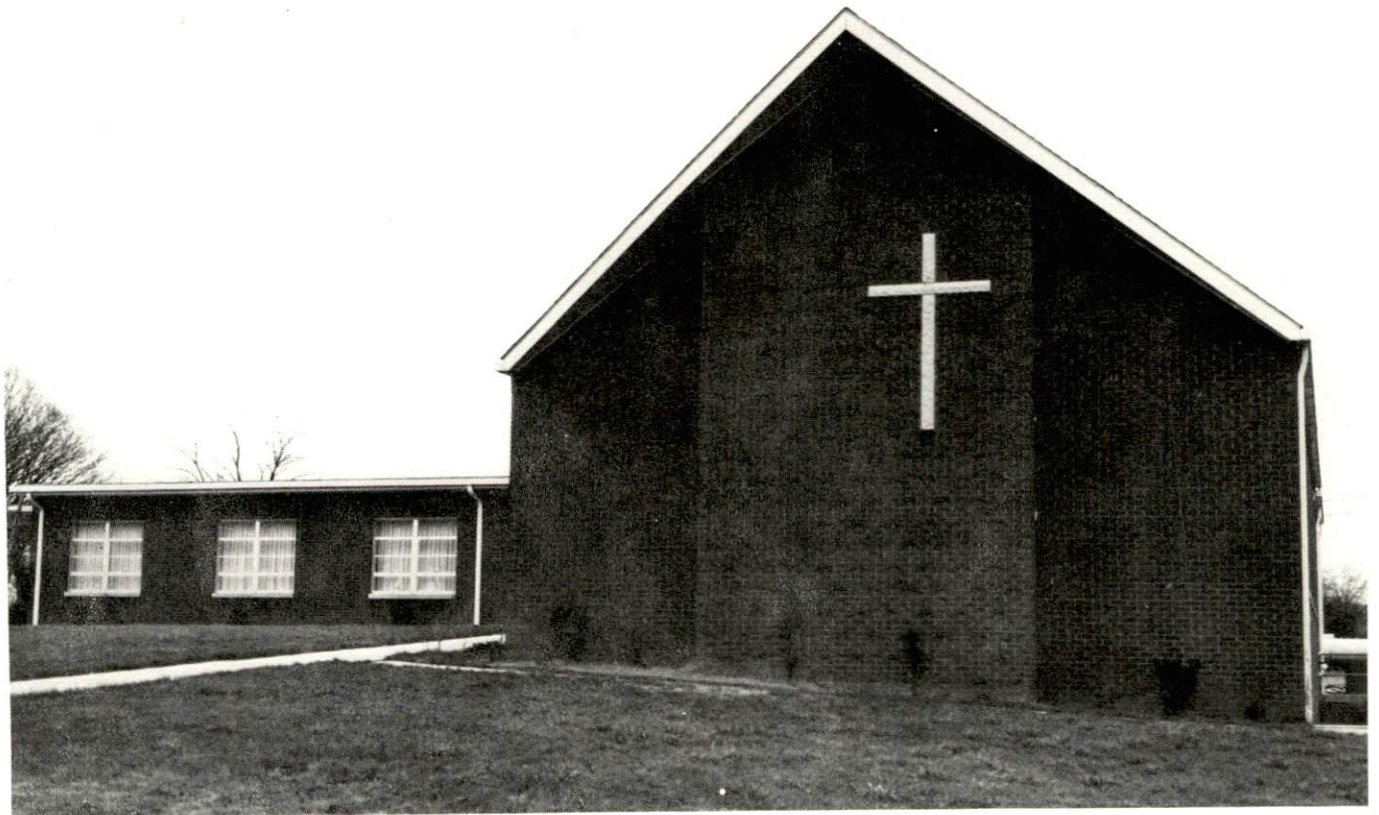
Television -
Cable service
Reception from - Bowling Green, Lexington, and Louisville, Kentucky;
Nashville and Knoxville, Tennessee
Kentucky Educational Television - Somerset transmitter, Channel 29

Library Services

Public library - Clinton County Public Library
Size collection - 19,446 volumes
Circulation, 1974-75 - 125,922
Services - Bookmobile; records; films; magazines; art reproductions;
story hour; reading hour and pre-school reading hour; senior citizens
group; weekly radio program - "Browsing through Books;" public
conference room; American Heritage Forum - bimonthly meetings;
weekly reading program and film showing for the mentally retarded;
annual arts and crafts exhibit; microfilm reader-printer and copier;
training children in Neighborhood Youth Corps Program; member
Kentucky Inter-Library Communications Network



BANK OF CLINTON COUNTY



ALBANY METHODIST CHURCH

Religious Institutions

Number of churches - 35 (Clinton County)

Denominations - Baptist, Catholic, Christian, Church of Christ,
Holiness, Methodist, Nazarene, Pentecostal, Disciples of Christ.

Nearest synagogues - Knoxville, Tennessee, 110 miles distant

Congregations - Heska Amuna (orthodox); Temple Bethel (reform)

Financial Institutions

<u>Banks</u>	<u>Assets</u>	<u>Deposits</u>	<u>Statement Date</u>
Citizens Bank of Albany	\$16,012,583.10	\$14,479,480.66	6/30/75
Bank of Clinton County	3,071,786.97	2,434,535.77	6/30/75

Hotels and Motels

Total number - 4
Total units - 50

Clubs and Organizations

Clinton County

Business and Civic - Lions, Clinton County Fish and Game Protection
Association, Kiwanis

Fraternal - Masonic Lodge, VFW, American Legion

Women's - Woman's Club, Younger Woman's Club, Eastern Star, Sewing
Circle, Homemakers

Youth - Cub Scouts, Girl Scouts, Boy Scouts, FFA, FHA, Beta Club,
Pep Club, Science Club

Other - Clinton County Riding Club

RECREATION

Local

A new city park, Veterans Park, is planned by the city in conjunction with the Albany Kiwanis Club. It will include tennis courts and baseball fields for a modern little league. In addition, a 3,497-acre state park is being constructed at Dale Hollow Reservoir near Albany. The park will contain complete camping facilities and a marina. It is scheduled to open for the 1977 tourist season.

At present Albany has one public park and two public baseball diamonds. There is a private country club which has a golf course and swimming pool. Albany also has one drive-in movie theatre.

Area (Within 60 miles)

Lake Cumberland State Resort Park near Jamestown, covering 50,250 acres and having over 1,200 miles of shoreline, offers a lodge and cottages - open all year, camping (April through October), swimming, boating, tennis, hiking, horseback riding, picnicking, playground, convention center, fishing, and 9-hole, par-three golf course.

General Burnside State Park, near Burnside, offers camping (April through October), swimming, fishing, dock, picnicking, playground, and an 18-hole golf course.

Cumberland Falls State Resort Park, near Corbin, is called the "Niagara of the South." The 150-foot-wide falls drop 68 feet, making Cumberland the largest waterfalls east of the Rocky Mountains and south of Niagara Falls. By night at full moon, the falls exhibit a mysterious moonbow, one of two such phenomena on earth. A lodge and cottages are open all year. The park offers camping (April through October), swimming, fishing, hiking, horseback riding, picnicking, playground, and a dance pavilion. Observation points overlook the falls and boulder-strewn gorge.

Barren River Lake State Park, near Glasgow and Scottsville, covers 10,000 acres and offers camping, fishing, hiking, picnicking, and Barren Lake Wildlife Management Area - hunting (regulated).

Old Mulkey Meeting House State Shrine, near Tompkinsville, is the oldest Kentucky log church, established in 1773 by Phillip Mulkey. The church was built in 1804. Daniel Boone's sister Hannah is buried here. The 30-acre park has a playground and picnic facilities.

COMMUNITY IMPROVEMENTS

Recent:

1. New bank - Bank of Clinton County and \$250,000 bank building.
2. New \$250,000 county jail.
3. Complete restoration of the exterior of the county courthouse.
4. New section of Kentucky Highway 90, with passing lane on steep inclines from Burkesville to the Clinton-Wayne County line (passing 5 miles north of Albany).
5. Renovation of a building to be used as the Albany Police Station.
6. New 750 gpm pumper for the Albany Volunteer Fire Department.
7. New \$17,000 modular ambulance for the Clinton County Ambulance Service.
8. A \$17,500 computer (the county's first computer) which handles billing, banking, general ledger, bookkeeping, payroll, and inventory functions as well as figuring accounts receivable and accounts payable.
9. All new radio equipment for the Clinton County Sheriff's Department.
10. New portable generators for the Clinton County Rescue Squad.

Planned:

1. A private local airport which would have lighting, a 3,500-foot paved runway, and all necessary fuel services (project cost estimate - \$50,000).

2. Veterans Park in Albany to include tennis courts and baseball fields for a modern little league (to be built by the city in conjunction with the Albany Kiwanis Club).
3. Federal Job Start grant of \$100,000 to help start small manufacturing concerns and commercial businesses.
4. A 1,000,000 gpd water treatment plant and four storage tanks, one of 500,000 gallons and three of 25,000 gallons.

Underway:

1. Complete restoration of the interior of the county courthouse.
2. Renovation of the exterior of city hall.
3. New 4,400 square foot post office building.
4. Rural bus transportation service for elderly, handicapped, and low-income persons financed with federal funds and administered through the Lake Cumberland Area Development District - to be in full operation by May, 1976.
5. Four men hired by the county to form an environmental cleanup crew under the federal Emergency Employment Act.
6. A 3,497-acre state park at Dale Hollow Reservoir near Albany which will contain complete camping facilities and a marina - to be open for the 1977 tourist season.

HISTORY

Clinton County, the eighty-fifth county formed in the state, dates from 1835. The earliest settlers in the area came from East Tennessee as early as 1790, two years before Kentucky became a state. The county was named for DeWitt Clinton, a native of New York State, who was four-time Governor of New York, state legislator, U. S. Senator, and Mayor of New York City. Albany, incorporated as a town in 1838, was named for the capital city of New York State. It had an estimated population of 2,039 in 1973.

At the outbreak of the Civil War, Albany became a Confederate outpost. The area in and surrounding Clinton County was well-known for its numerous bands of roving guerilla fighters, many united with neither the North nor the South. Federal troops took possession of Albany early in 1863 and held it through the remainder of the War. Like many other Kentucky towns, Albany's courthouse was burned by guerilla raiders, the incident occurring in late 1864. All county records were destroyed in the fire.

In 1840, Clinton County had a recorded population of 3,863. By 1880, the population had increased to 7,212. Between 1880 and 1890, population decreased slightly to 7,047. Population then began increasing steadily, reaching 10,605 in 1950. By 1970, population had dropped to 8,174. In 1974, the county's population was estimated at 8,700.

In recent years the economy of Clinton County has been transformed from one based on scattered lumbering operations, small gas wells, diversified farming, and livestock raising to one based on small industry and tourism. The construction of Lake Cumberland and Dale Hollow Reservoir has triggered the emergence of fishing camps, motels, cottages, and boat docks in the area. Albany, located in between these two bodies of water, stands to benefit greatly from the increasing tourist trade. Since 1955, seven firms have built small manufacturing plants at Albany. These presently employ some 866 persons. The garment industry predominates, employing 773.

Prominent citizens born in Clinton County or in the area which eventually became Clinton County include: former Kentucky Governors Thomas E. Bramlette (1863-1867) and Preston H. Leslie (1871-1875); James Semple, U. S. charge d'affaires to New Grenada, (1837-1841) and U. S. Senator from Illinois (1843-1847); and S. B. Maxey, who became a U. S. Senator from Texas.

**Kentucky Department of Commerce
Capital Plaza Tower
Frankfort, Kentucky 40601**

**Industrial Development Division
(502) 564-7140**

**Community Services Division
(502) 564-4300**

**Business Development Division
(502) 564-4300**

**Research and Planning Division
(502) 564-4886**

**Office of Minority Business Enterprises
(502) 564-4270**

**Map Sales Office
133 Holmes Street
(502) 564-4715**

**Industrial Development Finance Authority
(502) 564-4554**