

1970

Industrial Resources: Crittenden County - Marion

Kentucky Library Research Collections
Western Kentucky University, spcol@wku.edu

Follow this and additional works at: https://digitalcommons.wku.edu/crittenden_cty

 Part of the [Business Administration, Management, and Operations Commons](#), [Growth and Development Commons](#), and the [Infrastructure Commons](#)

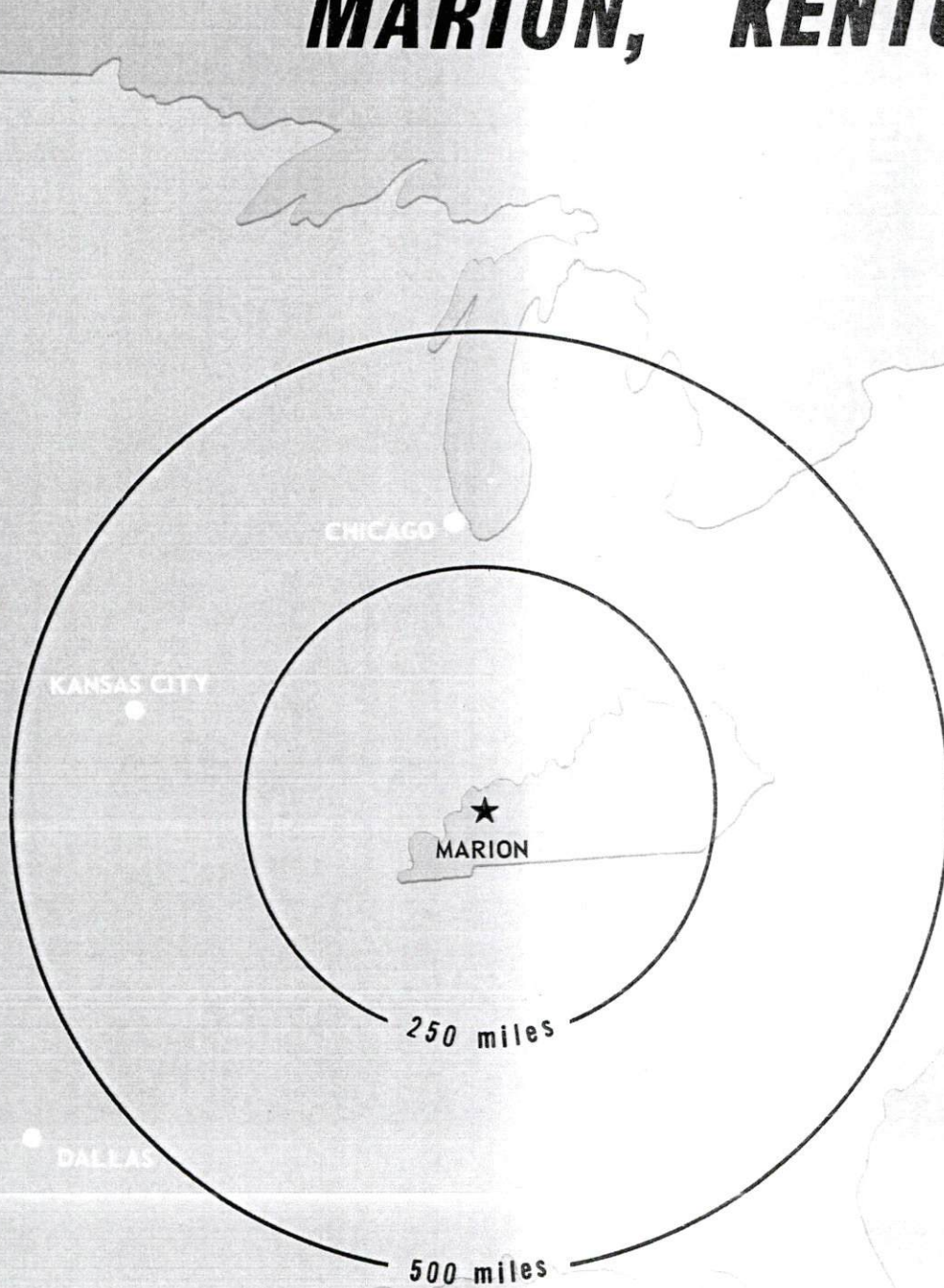
Recommended Citation

Kentucky Library Research Collections, "Industrial Resources: Crittenden County - Marion" (1970). *Crittenden County*. Paper 11.
https://digitalcommons.wku.edu/crittenden_cty/11

This Report is brought to you for free and open access by TopSCHOLAR®. It has been accepted for inclusion in Crittenden County by an authorized administrator of TopSCHOLAR®. For more information, please contact topscholar@wku.edu.

INDUSTRIAL RESOURCES

MARION, KENTUCKY



CURRENT INDUSTRIAL RESOURCES

CURRENT INDUSTRIAL RESOURCES, MARION, KENTUCKY

This is a 1974 supplement to "Industrial Resources, Marion, Kentucky" which was published in 1973.

Population

	<u>1972.</u> (Provisional)	<u>1970</u>	<u>1960</u>
Marion	N. A.	3,008	2,468
Crittenden County	9,000	8,493	8,648
Labor Market Area	65,200	63,994	63,455
(Includes Crittenden, Caldwell, Livingston, Lyon, Union, and Webster Counties.)			

General Employment Characteristics

<u>Industry</u>	<u>Employment 1972</u>	
	<u>Crittenden County</u>	<u>Labor Market Area</u>
TOTAL	2,940	22,230
Agricultural	470	2,990
Nonagricultural	2,470	19,240
Manufacturing	640	3,615
Trades and Services	330	2,530
Government	433	4,009
Other	1,067	9,086

Manufacturing Employment

<u>Type Industry</u>	<u>Crittenden County</u>			<u>Labor Market Area</u>		
	<u>Sept.</u> <u>1973</u>	<u>Sept.</u> <u>1963</u>	<u>%Change</u>	<u>Sept.</u> <u>1973</u>	<u>Sept.</u> <u>1963</u>	<u>%Change</u>
TOTAL	779	232	+235.8	3,940	1,784	+120.9
Food & Kindred Products	2	0	--	48	36	+ 33.3
Apparel, Textiles, Leather	0	0	0	1,009	686	+ 47.1
Lumber, Furniture	34	33	+ 3.0	193	215	- 10.2
Printing & Publishing, Paper	163	151	+ 7.9	222	405	- 45.2
Chemicals, Petroleum & Coal, Rubber	0	0	0	306	113	+170.8
Stone, Clay & Glass	0	44	-100.0	30	85	- 64.7
Machinery & Metal Products, Equipment	580	0	--	2,132	240	+788.3
Other	0	4	-100.0	0	4	-100.0

There are presently nine manufacturing firms in Marion. Firms, employment, and year started operations:

<u>Firms</u>	<u>Employment</u>	<u>Year started operations</u>
Circle-O-Farm Center	4	N. A.
Conyer Hardware Lumber Co.	2	N. A.
Crittenden Press	6	1876
Kentucky Stone Company	35	N. A.
Marion Machine Works	N. A.	1936
Marion Modular Homes, Inc.	15	N. A.
Moore Business Farms, Inc.	148	1950
Potter and Brumfield	541	1959
Turner and Conyer Lumber Co., Inc.	42	1958

Labor Supply

	<u>Crittenden County</u>			<u>Labor Market Area</u>		
	<u>Total</u>	<u>Male</u>	<u>Female</u>	<u>Total</u>	<u>Male</u>	<u>Female</u>
Current (1973)	720	290	430	6,830	3,020	3,810
Potential additions next five years	768	394	374	5,771	2,913	2,858

Personal Income

Crittenden County, 1971: Per Capita - \$2,630
 1961: Per Capita - \$1,020

Power and Fuel

Electric Distributors

Kentucky Utilities Company
 Henderson-Union RECC

Source of Supply

Kentucky Utilities Company
 Big Rivers RECC

Natural Gas Distributor

Western Kentucky Gas Company

Specific Gravity

.06

Btu per cu. ft.

1,000

Water and Sewerage

Water: Daily treatment capacity - 830,000 gallons; average daily use - 350,000 gallons; peak daily use - 370,000 gallons; storage capacity - 950,000 gallons; size distribution lines 4, 6, 8 and 12 inches

Minimum Rate for first 2,000 gallons \$1.50 per 1,000 gallons
(Minimum charge \$3.00)

Next	3,000 gallons	\$1.00 per 1,000 gallons
Next	10,000 gallons	.80 per 1,000 gallons
Next	10,000 gallons	.65 per 1,000 gallons
Next	25,000 gallons	.50 per 1,000 gallons
Next	50,000 gallons	.40 per 1,000 gallons
All over	100,000 gallons	.28 per 1,000 gallons

Sewerage: Type treatment - Primary and secondary: design capacity - 1,000,000 gallons per day

Rates: 90 percent of the monthly water bill

Local Government

Business Fees and Licenses: Business license fees range from \$10 to \$100 annually, depending on the type of business.

Property Tax Rates

Property tax rates per \$100 of assessed valuation, 1973

	<u>Marion</u>	<u>Crittenden County</u>
State	\$.015	\$.015
County	.332	.332
School	.414	.414
City	.329	
Total	\$1.090	\$.761

Tax for Schools

Crittenden County levies a 3 percent tax on utilities receipts for schools.

Industrial Sites

There are 3 industrial sites, 62 acres, 44 acres, and 100 acres, and a 139-acre industrial park available at Marion.

MARION INDUSTRIAL SITES

1974

MARION INDUSTRIAL SITES

1974

For more information about the following sites, contact Mr. John Ramsey, Kentucky Utilities Company, Marion, Kentucky or the Kentucky Department of Commerce, Capital Plaza Office Tower, Frankfort, Kentucky.

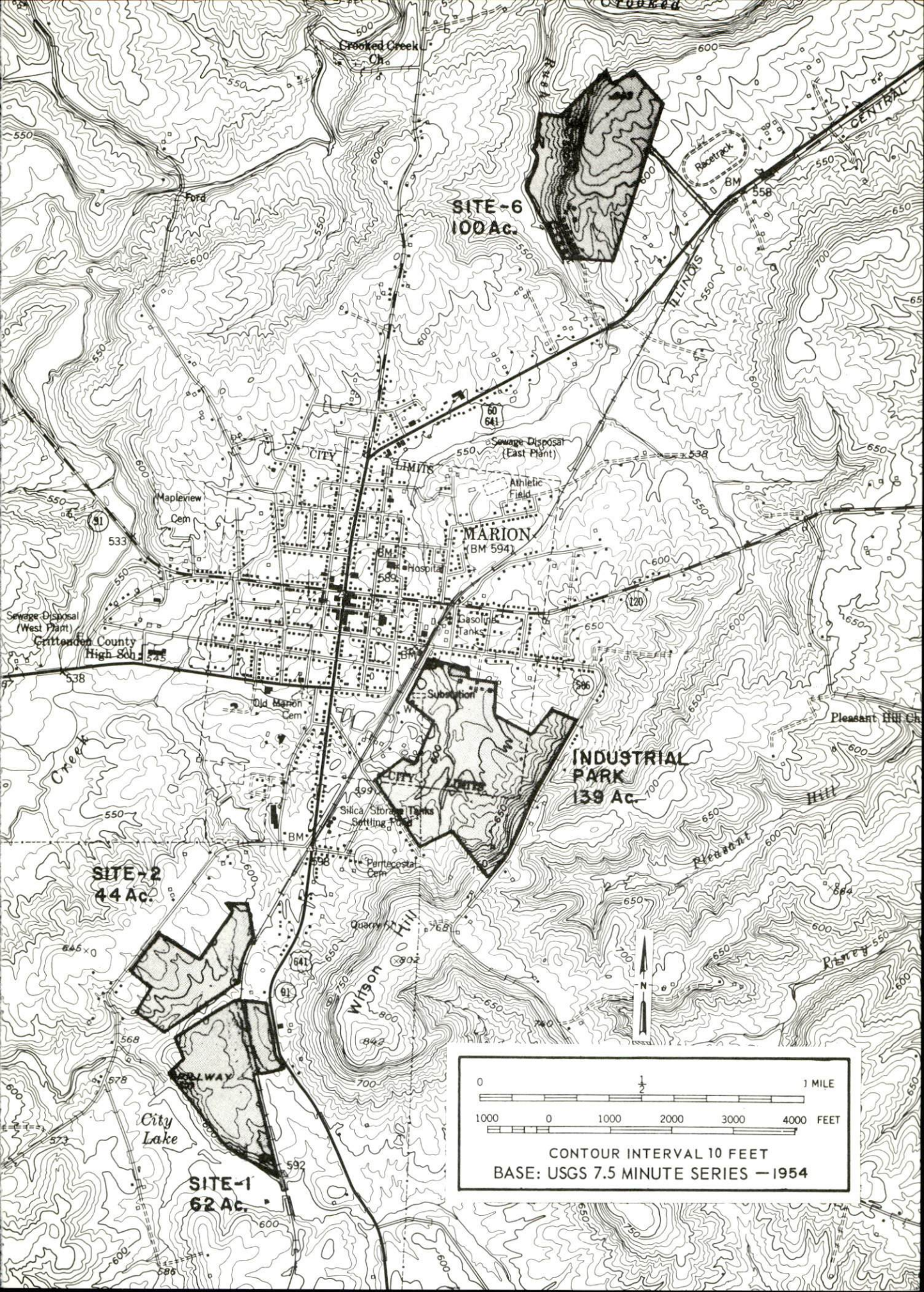
SITE #1: ACREAGE: 62 acres
LOCATION: Adjoins southern city limits
ZONING: Industrial
HIGHWAY ACCESS: U. S. 641 along eastern boundary of site
RAILROAD: Illinois Central Gulf Railroad passes through eastern portion of site
WATER: City of Marion Water Service
SIZE LINE: 8-inch line along northern boundary of site
GAS: Western Kentucky Gas Company
SIZE MAIN: 4-inch main approximately 620 feet east of site
ELECTRICITY: Kentucky Utilities Company
SEWERAGE: City of Marion Sewer Service
SIZE LINE: 15-inch line extends onto north-east portion of site
OPTIONED BY: Crittenden County Chamber of Commerce

SITE #2: ACREAGE: 44 acres
LOCATION: Within southern city limits
ZONING: Not zoned
HIGHWAY ACCESS: Paved access road to U. S. 641
RAILROAD: Illinois Central Gulf Railroad along eastern boundary of site
WATER: City of Marion Water Service
SIZE LINE: 8-inch line passes through center and along northwest boundary of site
GAS: Western Kentucky Gas Company
SIZE MAIN: 4-inch main approximately 600 feet east of site
ELECTRICITY: Kentucky Utilities Company
SEWERAGE: City of Marion Sewer Service
SIZE LINE: 15-inch line extends onto eastern portion of site
OPTIONED BY: Crittenden County Chamber of Commerce

SITE #6: ACREAGE: 100 acres
LOCATION: Adjacent to northern city limits
ZONING: Not zoned
HIGHWAY ACCESS: U. S. 60-641 approximately one-half mile southeast of site via unpaved access road
RAILROAD: Not rail served
WATER: City of Marion Water Service
SIZE LINE: 8-inch line extends onto eastern portion of site
GAS: Western Kentucky Gas Company
SIZE MAIN: 4-inch main approximately 2,800 feet south of site
ELECTRICITY: Kentucky Utilities Company
SEWERAGE: City of Marion Sewer Service
SIZE LINE: 8-inch line extends onto eastern portion of site
OPTIONED BY: Crittenden County Chamber of Commerce

INDUSTRIAL PARK

ACREAGE: 139 acres
LOCATION: Within eastern city limits
ZONING: Industrial.
HIGHWAY ACCESS: U. S. 641 via paved city street
RAILROAD: Illinois Central Gulf Railroad along northwestern boundary of site
WATER: City of Marion Water Service
SIZE LINE: 8-inch line on northwest corner of site
GAS: Western Kentucky Gas Company
SIZE MAIN: 2-inch main approximately 100 feet north of site along south side of Kentucky 506
ELECTRICITY: Kentucky Utilities Company
SEWERAGE: City of Marion Sewer Service
SIZE LINE: 8-inch line on northwest corner of site
OPTIONED BY: Crittenden County Chamber of Commerce

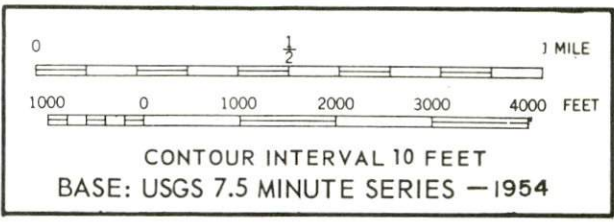


SITE-6
100 Ac.

SITE-2
44 Ac.

SITE-1
62 Ac.

INDUSTRIAL PARK
139 Ac.



0 1/2 1 MILE

1000 0 1000 2000 3000 4000 FEET

CONTOUR INTERVAL 10 FEET
BASE: USGS 7.5 MINUTE SERIES - 1954

CURRENT INDUSTRIAL RESOURCES

CURRENT INDUSTRIAL RESOURCES, MARION COUNTY, KENTUCKY

This is a 1972 supplement to "Industrial Resources, Marion County, Kentucky" which was published in 1971.

Population

	<u>1970</u>	<u>1960</u>
Lebanon	5,528	4,813
Loretto	985	
Marion County	16,714	16,887
Labor Market Area	112,749	112,438
(Includes Marion, Boyle, Casey, Larue, Nelson, Taylor, and Washington Counties.)		

General Employment Characteristics

<u>Industry</u>	<u>Employment 1970</u>	
	<u>Marion County</u>	<u>Labor Market Area</u>
TOTAL	4,700	39,500
Agricultural	1,300	8,000
Nonagricultural	3,400	31,500
Manufacturing	900	10,444
Trade and Services	972	7,633
Government	500	4,400
Other	1,028	9,023

Manufacturing Employment

<u>Type Industry</u>	<u>Marion County</u>			<u>Labor Market Area</u>		
	<u>1971</u>	<u>1961</u>	<u>%Change</u>	<u>1971</u>	<u>1961</u>	<u>%Change</u>
TOTAL	783	736	+ 6.4	10,835	6,395	+ 19.4
Food & kindred products	51	64	- 20.3	1,179	1,458	- 19.1
Tobacco	0	0	0	134	30	+ 346.7
Apparel, textiles, leather	236	400	- 41.0	5,649	3,451	+ 67.7
Lumber & furniture	117	81	+ 44.4	830	607	+ 36.7
Printing, publishing, paper	11	8	+ 37.5	1,018	139	+ 632.4
Chemicals, petroleum, coal, rubber	0	0	0	230	16	+1,337.5
Stone, clay & glass	0	7	-100.0	628	488	+ 28.7
Machinery & metal products	368	176	+109.1	1,167	202	+ 477.7

There are presently 18 manufacturing firms in Marion County.
 Major firms, employment, and year started operations:

<u>Firms</u>	<u>Employment</u>	<u>Year Started Operations</u>
Bourbon Cooperage Company	136	1948
Dayton Etched Products Cooperation	260	1965
Jane Sportswear Company	161	1958
Lebanon Oak Flooring Company	58	1916
Linda Sportswear	89	1960
Telecom, Incorporated	140	1958
Star Hill Distillery Company	52	1953

Labor Supply

	<u>Marion County</u>			<u>Labor Market Area</u>		
	<u>Total</u>	<u>Male</u>	<u>Female</u>	<u>Total</u>	<u>Male</u>	<u>Female</u>
Current	900	593	307	7,785	4,398	3,387
Potential additions next five years	2,041	1,037	1,004	12,405	6,292	6,113

Personal Income

Marion County, 1970: Total - \$34,506,000; Per Capita - \$2,149
 1960: Total - \$17,180,000; Per Capita - \$1,017

Education

The Marion County School System includes 1 high school with standard rating, 1 junior high school, and 7 elementary schools.

Nearest State Vocational School: Central Kentucky State Vocational Technical School, 59 miles from Lebanon

Courses offered: Accounting Junior Management, Clerical, Secretarial, Marketing and Distributive Education, Practical Nursing, Electronics (Communications), Technical Drafting, Auto Body Repair, Auto Mechanics, Commercial Foods, Cosmetology, Drafting, Electricity, Machine Shop, Office Machine Repair, Printing, Sheet Metal, Welding

Nearest Area Vocational Education Center: Marion County Area Vocational Education Center

Courses offered: Accounting Junior Management, Clerical, Secretarial, Auto Mechanics, Carpentry, Drafting, Welding

Power and Fuel

Electric Distributors

Kentucky Utilities Company
Inter-County RECC

Source of Supply

Kentucky Utilities Company
East Kentucky Power Cooperative

Natural Gas Distributor

Lebanon

Western Kentucky Gas Company

. 587

1, 020

Specific Gravity Btu Per Cu. Ft.

Water and Sewerage

Lebanon

Water: Daily treatment capacity - 2, 000, 000 gallons; average daily use - 800, 000 gallons; maximum daily use - 900, 000 gallons; storage capacity - 1, 805, 000 gallons; size distribution lines - 10, 8, and 6 inches

MONTHLY WATER RATES FOR WHOLESALE
AND INDUSTRIAL CONSUMERS

<u>Cubic Feet</u>	<u>Amount</u>	<u>Cubic Feet</u>	<u>Amount</u>
200	\$ 3. 13	1, 900 to 2, 000	\$15. 13
200 to 300	3. 88	2, 000 to 2, 100	15. 63
300 to 400	4. 63	2, 100 to 2, 200	16. 13
400 to 500	5. 38	2, 200 to 2, 300	16. 63
500 to 600	6. 13	2, 300 to 2, 400	17. 13
600 to 700	6. 88	2, 400 to 2, 500	17. 63
700 to 800	7. 63	2, 500 to 2, 600	18. 13
800 to 900	8. 25	2, 600 to 2, 700	18. 63
900 to 1, 000	8. 88	2, 700 to 2, 800	19. 13
1, 000 to 1, 100	9. 50	2, 800 to 2, 900	19. 63
1, 100 to 1, 200	10. 13	2, 900 to 3, 000	20. 13
1, 200 to 1, 300	10. 75		
1, 300 to 1, 400	11. 38	Next 2, 000 cu. ft., 50¢ per 100 cu. ft.	
1, 400 to 1, 500	12. 00		
1, 500 to 1, 600	12. 63	Next 10, 000 cu. ft., 44¢ per 100 cu. ft.	
1, 600 to 1, 700	13. 25		
1, 700 to 1, 800	13. 88	All over 15, 000 cu. ft., 31¢ per	
1, 800 to 1, 900	14. 50	100 cu. ft.	

Sewerage: Type treatment - secondary and polishing lagoon; design capacity - 1,000,000 gallons per day; size of sewer mains - 8 to 21 inches

Local Government

Property Tax Rates

Property tax rates per \$100 of assessed valuation, 1972

	<u>Lebanon</u>	<u>Marion County</u>
State	\$.015	\$.015
County	.216	.216
School	.475	.475
City	.280	
Total	\$.986	\$.706

Tax for Schools

Marion County levies a 3 percent tax on utilities receipts for schools.

Police Protection: Number of law enforcement officers - 15 (Lebanon);
5 (Marion County)

Fire Protection: Number of full-time firemen - 1; number of volunteer firemen - 15; American Insurance Association fire rating, City of Lebanon, Class 7

Industrial Sites

There are five sites at Lebanon available for industrial use. The sites range from 8.7 to 105 acres. There are three industrial sites located at Loretto.

MARION COUNTY INDUSTRIAL SITES

1972

For additional information concerning the following Lebanon sites, contact Mr. T. E. Spragens, Jr., Lebanon, Kentucky 40033; or the Kentucky Department of Commerce, Capital Plaza Office Tower, Frankfort, Kentucky 40601.

Lebanon

SITE #1: ACREAGE: 47.80 acres
 LOCATION: East Lebanon, within the city limits
 ZONING: Industrial
 HIGHWAY ACCESS: U. S. 68 borders site on north
 RAILROADS: Louisville & Nashville Railroad, rail spur to site
 WATER: Lebanon Water Works Company
 SIZE LINE: 8-inch line on site
 GAS: Western Kentucky Gas Company
 SIZE MAIN: 4-inch main on northern boundary
 ELECTRICITY: Kentucky Utilities Company
 SEWERAGE: Lebanon Municipal Sewerage System
 OPTIONED BY: Lebanon Industrial Committee

SITE #2: ACREAGE: 80 acres
 LOCATION: One-half mile west of Lebanon
 HIGHWAY ACCESS: Kentucky Route 49 borders site on north
 RAILROADS: Louisville & Nashville Railroad borders site on south
 WATER: Lebanon Water Works Company
 SIZE LINE: 8-inch line on site
 GAS: Western Kentucky Gas Company
 SIZE MAIN: 8-inch main, 800 feet from site
 ELECTRICITY: Kentucky Utilities Company
 SEWERAGE: Lebanon Municipal Sewerage System
 OWNERSHIP: Private

SITE #3: ACREAGE: 8.7 acres
 LOCATION: Southwest of Lebanon
 ZONING: Industrial
 HIGHWAY ACCESS: U. S. 68 on north border
 WATER: Lebanon Water Works Company
 SIZE LINE: 8-inch line on site
 GAS: Western Kentucky Gas Company
 SIZE MAIN: 4-inch main on site
 ELECTRICITY: Kentucky Utilities Company
 SEWERAGE: Lebanon Municipal Sewerage System
 OWNERSHIP: City of Lebanon

SITE #4: ACREAGE: 12 acres
 LOCATION: Northeast section of Lebanon
 ZONING: Industrial
 HIGHWAY ACCESS: Paved city street to U. S. 68
 RAILROADS: Louisville & Nashville Railroad, 500 feet south of site
 WATER: Lebanon Water Works Company
 SIZE LINE: 6-inch line on western boundary
 GAS: Western Kentucky Gas Company
 SIZE MAIN: 4-inch main on southwest boundary
 ELECTRICITY: Kentucky Utilities Company
 SEWERAGE: Lebanon Municipal Sewerage System
 OWNERSHIP: Private

SITE #5: ACREAGE: 105 acres
 LOCATION: Located at south city limits
 ZONING: None
 HIGHWAY ACCESS: Kentucky 208 approximately 100 feet from extreme western tip of site
 RAILROADS: Louisville & Nashville Railroad
 WATER: Lebanon Water Works Company
 SIZE LINE: 12-inch line along southern boundary
 GAS: Western Kentucky Gas Company
 SIZE MAIN: 4-inch main along southern boundary
 ELECTRICITY: Kentucky Utilities Company
 SEWERAGE: Municipal
 SIZE LINE: 8-inch line within 600 feet of site
 OWNERSHIP: Private

Available Industrial Building

LOCATION: Woodlawn Avenue, Lebanon, Kentucky
 OWNER: City of Lebanon
 YEAR CONSTRUCTED: 1959
 NO. OF FLOORS: One (8,613 square feet)
 ACREAGE AVAILABLE: Approximately 5.25
 TYPE CONSTRUCTION: Brick, block and concrete
 TYPE ROOF: Built up
 TYPE FLOOR: Brick-tile, concrete
 HEATING: Gas fired steam heat
 TRUCK LOADING DOCKS: Yes
 ROADWAY ACCESS: U. S. 68 one block north, 3 blocks from Kentucky Route 55
 WATER: Lebanon Water Works Company
 SEWERAGE: 8-inch main
 GAS: Western Kentucky Gas Company, 4-inch line
 ELECTRICITY: Kentucky Utilities Company

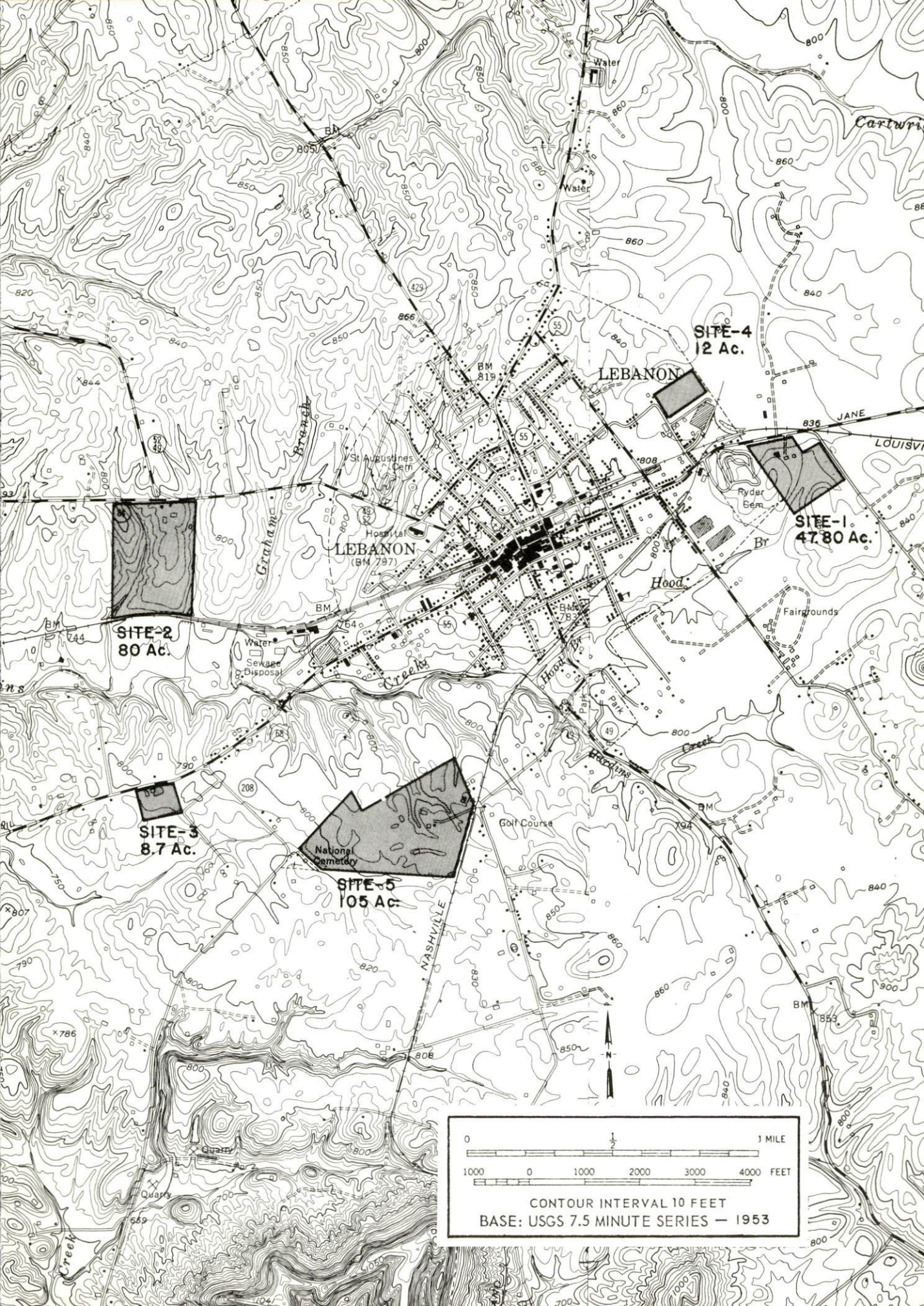
For further information concerning the following Loretto sites, contact Mr. Douglas Cambron, Loretto, Kentucky, or the Kentucky Department of Commerce, Capital Plaza Office Tower, Frankfort, Kentucky.

Loretto

SITE #1: ACREAGE: 30 acres
LOCATION: Within south city limits
ZONING: None
HIGHWAY ACCESS: Paved county road along east boundary of Kentucky 52
RAILROADS: Not rail served
WATER: Marion County Water District
SIZE LINE: 4-inch line adjacent to site
GAS: Louisville Gas and Electric Company
SIZE MAIN: 2-inch main adjacent to site
ELECTRICITY: Kentucky Utilities Company or Inter-County RECC
SEWERAGE: Package plant necessary
OPTIONED BY: Western Marion County Industrial Committee

SITE #2: ACREAGE: 12 acres
LOCATION: Southeast of Loretto; one-quarter mile from city limits
ZONING: None
HIGHWAY ACCESS: Paved county road along east border to Kentucky 49
RAILROADS: Louisville & Nashville Railroad along western boundary
WATER: Marion County Water District
SIZE LINE: 6-inch line adjacent to site
GAS: Louisville Gas and Electric Company
SIZE MAIN: 2-inch main, 200 feet north of site
ELECTRICITY: Kentucky Utilities Company or Inter-County RECC
SEWERAGE: Package plant necessary
OPTIONED BY: Western Marion County Industrial Committee

SITE #3: ACREAGE: 29 acres
LOCATION: Southeast of Loretto, one-quarter mile from city limits
ZONING: None
HIGHWAY ACCESS: Kentucky 49 along northern boundary; paved county road along western boundary
RAILROADS: Louisville & Nashville Railroad, 100 yards west of site
WATER: Marion County Water District
SIZE LINE: 6-inch line adjacent to site
GAS: Louisville Gas and Electric Company
SIZE MAIN: 2-inch main, 200 feet north of site
ELECTRICITY: Kentucky Utilities Company or Inter-County RECC
SEWERAGE: Package plant necessary
OPTIONED BY: Western Marion County Industrial Committee



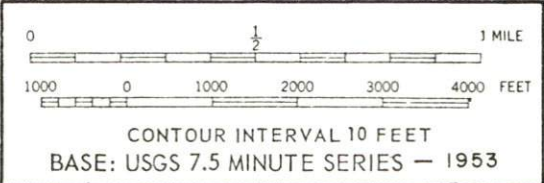
SITE-2
80 Ac.

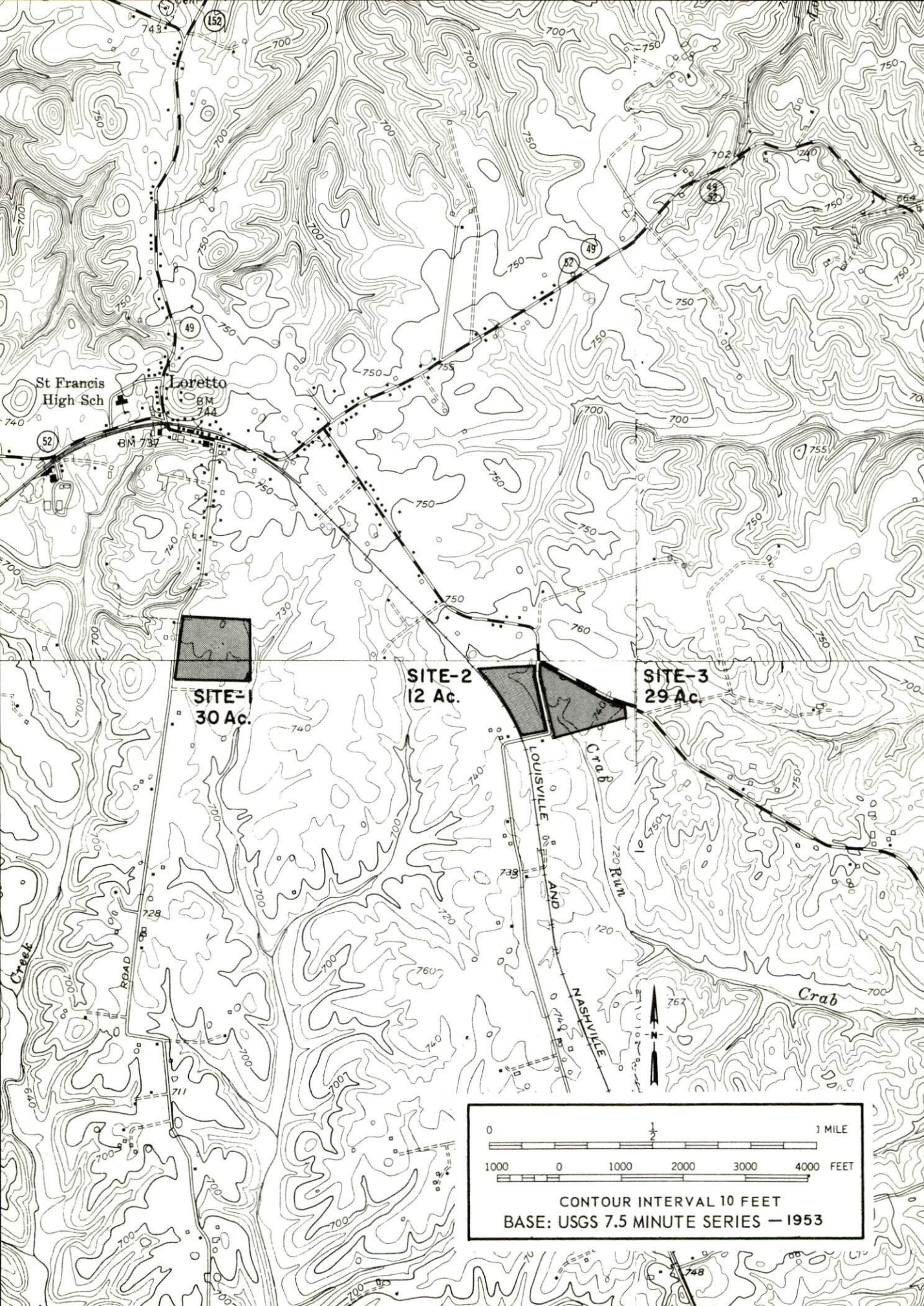
SITE-3
8.7 Ac.

SITE-5
105 Ac.

SITE-4
12 Ac.

SITE-1
47.80 Ac.





St Francis High Sch

Loretto

SITE-1
30 Ac.

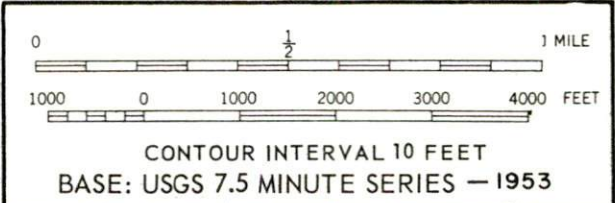
SITE-2
12 Ac.

SITE-3
29 Ac.

LOUISVILLE AND NASHVILLE ROAD

CRAB

CRAB



MARION INDUSTRIAL SITES

1970

MARION INDUSTRIAL SITES

For additional information concerning the following sites, contact Jim Hunt, 106 East Bellville Street, Marion, Kentucky; or the Kentucky Department of Commerce, Frankfort, Kentucky.

SITE #1: ACREAGE AND TOPOGRAPHY: 50 acres, level
LOCATION: Adjoins southern city limits of Marion
HIGHWAY ACCESS: Paved access road from U.S. 641 onto western boundary of site
RAILROADS: Illinois Central Railroad adjacent to east boundary line
WATER: City of Marion Water Service
SIZE LINE: 8-inch and 12-inch
GAS: Western Kentucky Gas Company
SIZE LINE: 4-inch
ELECTRICITY: Kentucky Utilities Company
SEWERAGE: City of Marion Sewer Service
OWNERSHIP: Private

SITE #2: ACREAGE AND TOPOGRAPHY: 44 acres, gently rolling
LOCATION: Within southern city limits of Marion
HIGHWAY ACCESS: U.S. 641 and Kentucky Highway 91 - 1,000 feet from east side of site via paved access road
RAILROADS: Illinois Central Railroad adjacent to east boundary line
WATER: City of Marion Water Service
SIZE LINE: 8-inch and 12-inch
GAS: Western Kentucky Gas Company
SIZE LINE: 4-inch
ELECTRICITY: Kentucky Utilities Company
SEWERAGE: City of Marion Sewer Service
OPTIONED BY: Marion Businessmen's Association

SITE #3: ACREAGE AND TOPOGRAPHY: 50 acres, level to gently rolling
LOCATION: Within the northeast city limits of Marion
HIGHWAY ACCESS: U.S. 60 one-fourth mile north - no access road at present
RAILROADS: Illinois Central Railroad adjacent to east boundary
WATER: City of Marion Water Service
SIZE LINE: 8-inch
GAS: Western Kentucky Gas Company
SIZE LINE: 4-inch
ELECTRICITY: Kentucky Utilities Company
SEWERAGE: City of Marion Sewer Service
OWNERSHIP: Private

SITE #4: ACREAGE AND TOPOGRAPHY: 93 acres, gently rolling
LOCATION: Partially within the northeast city limits of Marion
HIGHWAY ACCESS: U.S. 60 - unpaved access road
RAILROADS: Illinois Central Railroad adjacent to west boundary
WATER: City of Marion Water Service
SIZE LINE: 8-inch
GAS: Western Kentucky Gas Company
SIZE LINE: 4-inch
ELECTRICITY: Kentucky Utilities Company
SEWERAGE: City of Marion Sewer Service
OWNERSHIP: Private

SITE #5: ACREAGE AND TOPOGRAPHY: 25 acres, gently rolling
LOCATION: One-half mile northeast of city
HIGHWAY ACCESS: U.S. 60 300 feet north of site - unpaved access road
RAILROADS: Illinois Central Railroad adjacent to west-northwest boundary
WATER: City of Marion Water Service
SIZE LINE: 8-inch
GAS: Western Kentucky Gas Company
SIZE LINE: 4-inch
ELECTRICITY: Kentucky Utilities Company
SEWERAGE: City of Marion Sewer Service
OWNERSHIP: Private

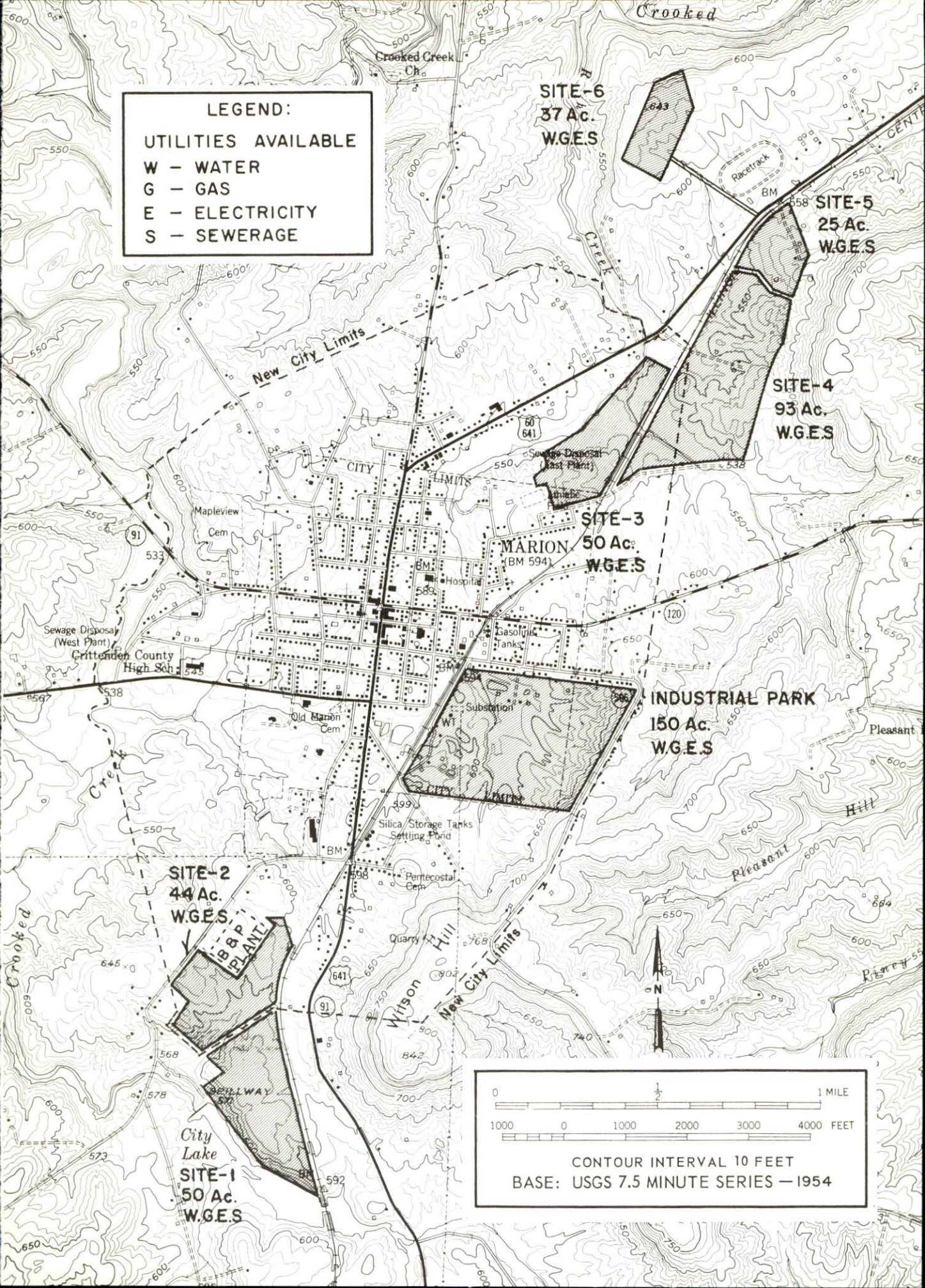
SITE #6: ACREAGE AND TOPOGRAPHY: 37 acres, level to gently rolling
LOCATION: One-half mile north of city of Marion
HIGHWAY ACCESS: U.S. 60 one-half mile southeast of site - unpaved access road
RAILROADS: Not rail served
WATER: City of Marion Water Service
SIZE LINE: 8-inch
GAS: Western Kentucky Gas Company
SIZE LINE: 4-inch
ELECTRICITY: Kentucky Utilities Company
SEWERAGE: City of Marion Sewer Service
OPTIONED BY: Marion Businessmen's Association

INDUSTRIAL PARK

ACREAGE AND TOPOGRAPHY: 150 acres, level to gently rolling
LOCATION: Within the eastern city limits of Marion
ZONING: Industrial
HIGHWAY ACCESS: Access to U.S. 641 and Kentucky Highway 91 via two city streets on north and west sides of site
RAILROADS: Illinois Central Railroad on site
WATER: City of Marion Water Service
SIZE LINE: 8-inch
GAS: Western Kentucky Gas Company
ELECTRICITY: Kentucky Utilities Company
SEWERAGE: City of Marion Sewer Service
OWNERSHIP: Private

Remarks: Site is to be developed during Summer of 1970 by private firm.

LEGEND:
UTILITIES AVAILABLE
W - WATER
G - GAS
E - ELECTRICITY
S - SEWERAGE



INDUSTRIAL RESOURCES

MARION, KENTUCKY

Prepared by

The Kentucky Department of Commerce

in cooperation with

The Marion Businessmen's Association

1970

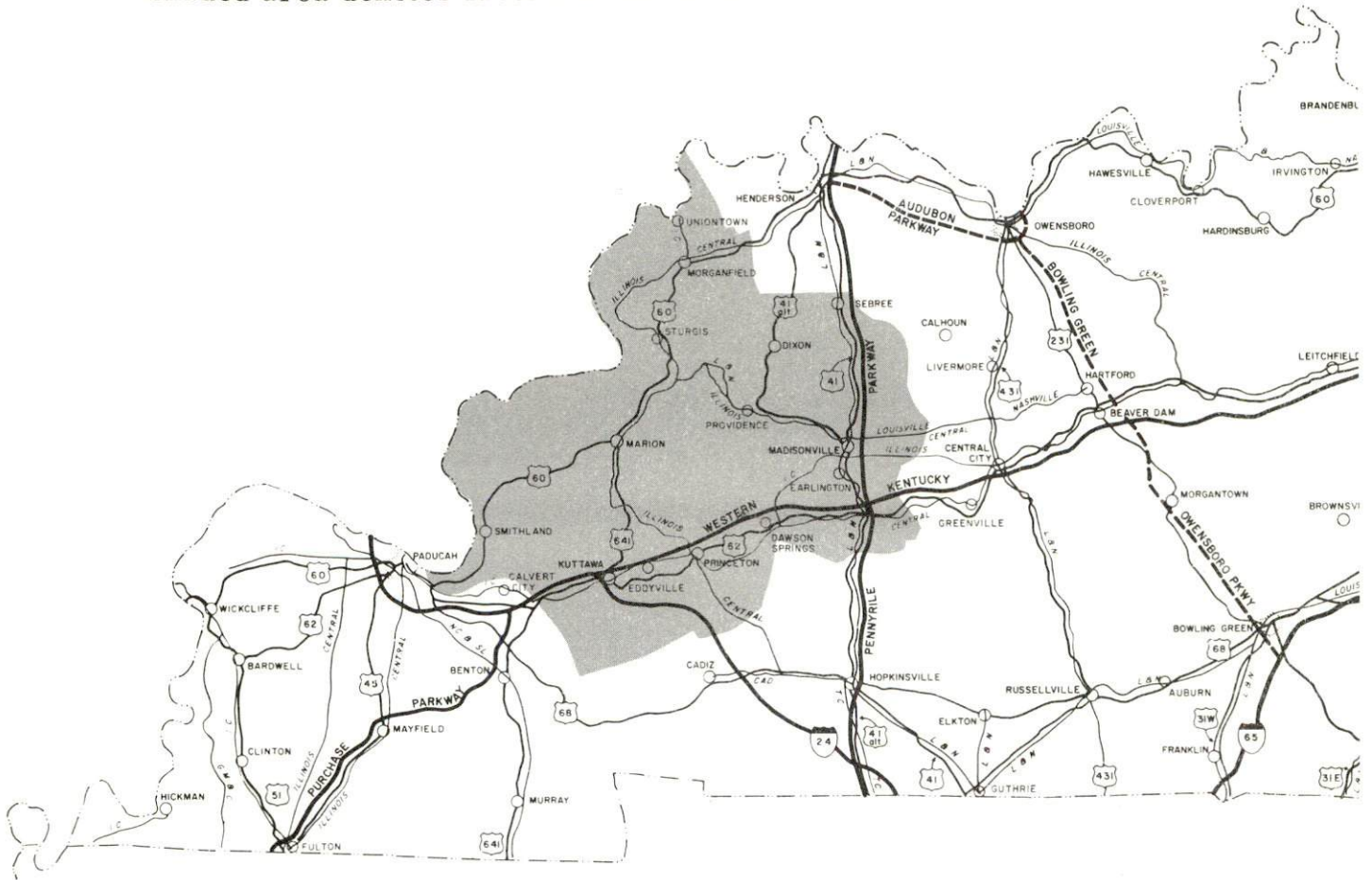
TABLE OF CONTENTS

<u>Chapter</u>	<u>Page</u>
INDUSTRIAL SITES	i
MARION, KENTUCKY - A RESOURCE PROFILE.	1
THE LABOR MARKET	4
Population Trends	4
General Employment Characteristics, 1968.	4
Manufacturing Employment Trends by Industry	4
Marion Manufacturing Firms, Their Products and Employment	5
Wage Rates For Selected Occupations	5
Labor Organizations	7
Current and Future Labor Supply	7
Total Personal Income	7
Per Capita Personal Income.	7
EDUCATION	8
Public Schools	8
Vocational Schools	8
Colleges and Universities	8
TRANSPORTATION.	9
Rail	9
Truck Service	9
Air	10
Bus.	10
Taxi	10
Rental Services	10
POWER AND FUEL.	11
Electricity	11
Natural Gas	11
WATER AND SEWERAGE	12
Water.	12
Sewerage	12

<u>Chapter</u>	<u>Page</u>
LOCAL GOVERNMENT	13
City	13
County	13
Assessed Value of Property - 1969	13
Local General Property Tax Rates Per \$100 of Assessed Valuation - 1969	13
Safety	14
Police	14
Fire	14
Rescue Service	14
Sanitation	14
HEALTH	16
Hospitals	16
Nursing Homes	16
Public Health	16
OTHER LOCAL FACILITIES	18
Communications	18
Library Services	18
Religious Institutions	18
Financial Institutions	20
Hotels and Motels	20
Clubs and Organizations	20
RECREATION	21
Local	21
Area	21
AGRICULTURE - NATURAL RESOURCES - CLIMATE	22
Agriculture	22
Natural Resources	22
Climate	22
HISTORY	23

MARION LABOR MARKET AREA

*Shaded area denotes labor market area



MARION, KENTUCKY - A RESOURCE PROFILE

Location

Marion, the county seat of Crittenden County, is located in the northwestern part of the state.

The designation of Marion as a 1969 All-Kentucky City is strong proof that the city is progressive and in tune with the times.

Geographically, Marion is positioned in the Pennyrile Region, 188 miles from Louisville, Kentucky; 245 miles from Lexington, Kentucky; 123 miles from Nashville, Tennessee; and 228 miles from St. Louis, Missouri.

The 1970 population of Marion is 2,897 with population of Crittenden County at 8,253.

The Economic Framework

Total employment in Crittenden County averaged 2,630 in 1968, with manufacturing providing 550 of these jobs, agriculture 600, trade and services 400, and government 300. During the first nine years of the decade manufacturing employment increased by 350 jobs or 153 percent. Major industrial products are electro-magnetic relays, business forms, and lumber.

Per capita income in the county in 1968 was \$1,988. Between 1959 and 1968, per capita personal income in the county increased 52 percent.

The Marion labor market area includes Crittenden County and its five surrounding Kentucky counties. Area employment totaled 21,245 in 1968, including 3,900 in agriculture. Manufacturing furnishes 5,600 jobs. Area industrial employment has increased by 3,385 jobs or 153 percent since 1959, with sharpest gains in the apparel, textiles, and machinery and metal products industries.

Despite important industrial gains in recent years the area still has a deficit of 2,482 manufacturing jobs when measured against the national industrial employment-population ratio. This indicates an area where the potential for additional manufacturing production is excellent.

Resources For Growth

1. There is a current estimated labor supply of 2,195 men and 3,065 women available for industrial jobs in the labor market area. In addition, 3,150 young men and 2,945 young women will become 18 years of age by 1976 and potentially available for work.

2. The local transportation capability is good. The Illinois Central Railroad provides Marion with a variety of services. U.S. Highway 60, a two-lane east-west trucking route, serves Marion. The Western Kentucky Parkway is only 22 miles to the south. A commercial airport, Barkley Field, is only 45 miles distant.

3. Electricity is available in large quantity. Both Kentucky Utilities and Henderson-Union RECC service the area. Natural gas is available from Western Kentucky Gas Company. Water and sewerage service is available from the City of Marion.

4. Industrial sites - Marion has six industrial sites with full utilities. A private industrial park is being developed and will have full utilities.

5. Education - There is one school system serving the county. This school system receives ETV on Channel 35. One university and four community colleges are located within 70 miles of Marion. There are two vocational schools within a 40-mile radius.

Community Programs For Improvement

On January 30, 1970, the Kentucky Chamber of Commerce announced that Marion, Kentucky, was one of ten cities to win the All-Kentucky City award. A few of the projects instrumental in achieving the award were: a \$1.6 million water and sewerage program; a new \$750,000 Crittenden County High School; a new \$650,000, fifty-bed hospital; a labor survey in which 90 percent of the questionnaires were received within six weeks; the optioning of industrial sites; and the movement of Potter & Brumfield into a new 50,000-square foot plant, employing approximately 100 workers. Also, the city has applied for federal funds for a 140-unit, low-rent housing development.

Recreation, Entertainment, and Livability

There are four state parks and a national recreation area within easy driving distance of Marion.

Kentucky Dam Village State Resort Park, 45 miles distant, covering 1,200 acres, has lake lodges, cottages, Village Inn, and facilities for camping, swimming, golfing, riding, tennis, fishing, and boating.

Kenlake State Resort Park, 65 miles distant, covering 1,800 acres, has a hotel, and facilities for fishing, boating, swimming, riding, golfing, tennis, shuffleboard, and camping.

Lake Barkley State Park, 40 miles distant, has 3,000 acres (under development). Facilities include fishing, boating, and swimming at the present time. There is a 124-room lodge, cottages, pool, golf course, playground, dining room and coffee shop. It is Kentucky's largest public recreational facility.

Pennyrile Forest State Resort Park, 34 miles distant, has 16,500 acres, a lodge, cottages, and facilities for camping, swimming, boating, fishing, golfing, riding, hiking, and picnicking.

Land Between the Lakes National Recreational Area, 35 miles distant, has 170,000 acres with 300 miles of shoreline. The facilities include fishing, water sports, hunting, camping, boating, and hiking.

THE LABOR MARKET

POPULATION TRENDS ^{1/}

	Population			Percent Change	
	1970	1960	1950	1960-70	1950-60
Marion	2,897	2,468	2,375	+17.4	+ 3.9
Labor Market Area	61,725	63,455	68,502	- 2.7	- 7.4
Crittenden County	8,253	8,648	10,818	- 4.6	-20.1
Caldwell County	12,603	13,073	13,199	- 3.6	- 1.0
Livingston County	7,391	7,029	7,184	+ 5.2	- 2.2
Lyon County	5,126	5,924	6,853	-13.5	-13.6
Union County	15,587	14,537	14,893	+ 7.2	- 2.4
Webster County	12,765	14,244	15,555	-10.4	- 8.4

GENERAL EMPLOYMENT CHARACTERISTICS, 1968 ^{2/}

Major Employment Group	Employment	
	Crittenden County	Labor Market Area
TOTAL	2,630	21,246
Agricultural	609	3,905
Nonagricultural	2,021	17,341
Manufacturing	553	3,629
Trade and Services	402	4,135
Government	300	22,233

MANUFACTURING EMPLOYMENT TRENDS BY INDUSTRY SEPTEMBER 1959 AND 1969 ^{3/}

Industry	Crittenden County			Labor Market Area		
	1969	1959	%Change	1969	1959	%Change
TOTAL	578	228	+153.5	5,594	2,209	+ 153.2
Food & Kindred Products	0	4	-	258	158	+ 63.3
Apparel, Textiles, Leather	0	0	-	1,554	989	+ 57.1
Lumber & Furniture	0	48	-	283	371	- 23.7
Printing, Publishing, Paper	177	129	+ 37.2	457	409	+ 11.7
Chemicals, Petroleum, Coal, Rubber	0	0	-	285	58	+ 391.4
Stone, Clay & Glass	8	42	- 81.0	27	78	- 65.4
Primary Metals	0	0	-	45	19	+ 136.8
Machinery & Metal Products	378	0	-	2,663	118	+2156.8
Other	15	5	+200.0	22	9	+ 144.4

MARION MANUFACTURING FIRMS,
THEIR PRODUCTS AND EMPLOYMENT ^{4/}

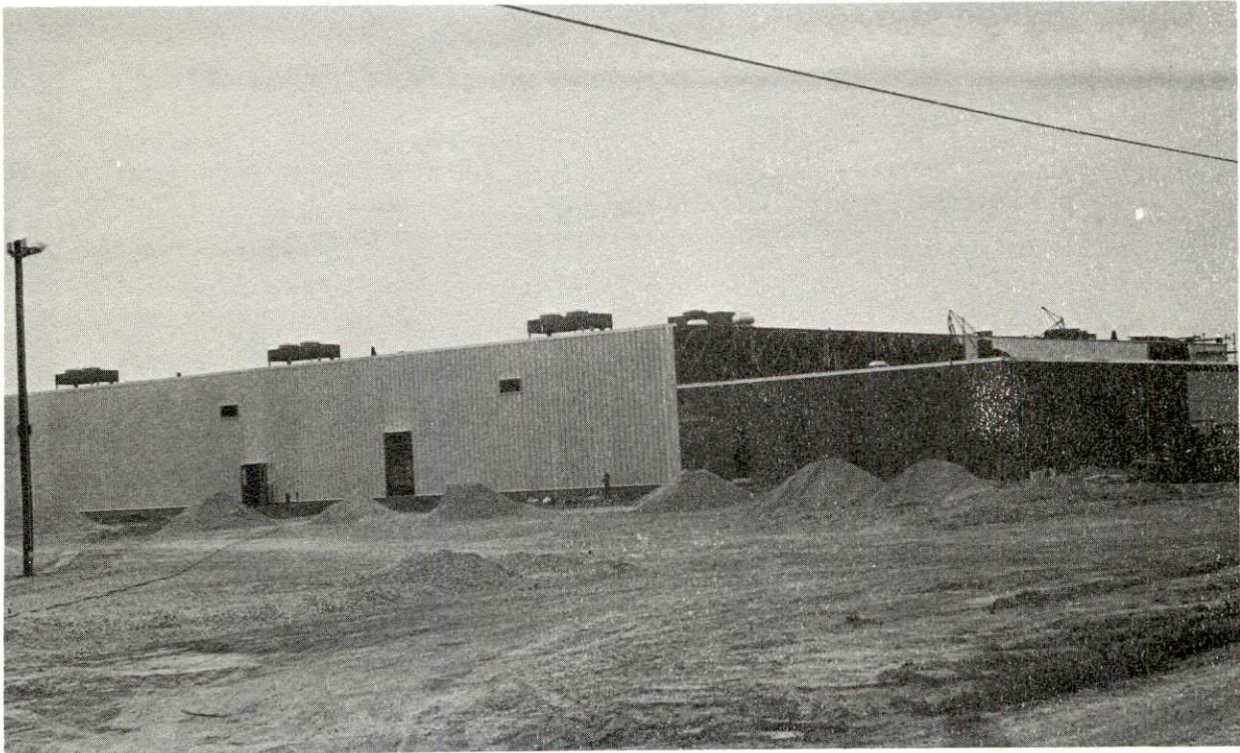
Firm	Product	Employment		
		Total	Male	Female
Alexander Stone Co., Inc.	Agricultural lime	35	35	0
Contractors Material Co.	Bituminous concrete	4	4	0
Crittenden Press	Newspaper, offset printing, letterpress printing	6	5	1
Kentucky Fluorspar Co., Inc.	Fluorspar processing	13	12	1
Marion Machine Works	Machine shop	13	12	1
Marion Wood Products Co.	Wood chips	3	3	0
Moore Business Forms, Inc.	Specialized business forms	162	78	84
R. C. Owen Co.	Hardwood flooring, lumber, wood pallets	120	120	0
Potter & Brumfield	Electro-magnetic relays	329	86	243
Turner & Conyer Lumber Co., Inc.	Lumber, pallets, boxes	42	40	2

WAGE RATES FOR SELECTED OCCUPATIONS
MARION, KENTUCKY ^{5/}

Classification	Rates Per Hour		
	Starting	Maximum	Prevailing
<u>Production Employees</u>			
Assembler	\$1. 60	\$2. 00	\$1. 80
Inspector	1. 70	2. 50	2. 05
Production Laborer	1. 60	2. 10	1. 85
Welder, Arc or Acetylene (Class-A)	2. 00	3. 50	2. 75
<u>Service Employees</u>			
Electrician (Class-A)	\$2. 70	\$3. 65	\$3. 00
Laborer	1. 60	2. 00	1. 80
Machinist	2. 50	3. 20	2. 70
Mechanic, Maintenance	2. 50	3. 50	2. 85
Truck Driver, Industrial (Class-A)	2. 00	3. 00	2. 50
<u>Office Employees</u>			
Bookkeeper	\$1. 85	\$2. 60	\$2. 05
Chief Clerk	1. 85	2. 60	2. 05
Receptionist	1. 60	2. 55	1. 75
Secretary	1. 70	3. 25	2. 50
Typist	1. 60	2. 10	1. 75



MOORE BUSINESS FORMS, INC.



NEW POTTER & BRUMFIELD PLANT

LABOR ORGANIZATIONS

Union

Representing Workers at:

United Mine Workers, District 50

Kentucky Fluorspar Co., Inc.

CURRENT AND FUTURE LABOR SUPPLY -
MARION LABOR MARKET AREA

County	1970			Future Labor Supply by 1976 ^{7/}		
	Current Labor Supply ^{6/}			(Becoming 18 Years of Age)		
	Total	Male	Female	Total	Male	Female
Labor Market Area	5,260	2,195	3,065	6,097	3,152	2,945
Crittenden	870	390	480	825	441	384
Caldwell	793	413	380	1,181	613	568
Livingston	826	323	503	683	343	340
Lyon	731	420	311	426	223	203
Union	699	181	518	1,625	848	777
Webster	1,341	468	873	1,357	684	673

TOTAL PERSONAL INCOME ^{8/}

Area	1968	1959	% Change
Crittenden County	\$ 28,597,000	\$ 7,804,000	+266.4
Labor Market Area	147,149,000	70,276,000	+109.4
Kentucky	8,516,000,000	4,655,000,000	+ 82.9

PER CAPITA PERSONAL INCOME ^{9/}

Area	1968	1959	% Change
Crittenden County	\$1,988	\$ 948	+52.3
Labor Market Area	\$1,401 to 2,795	\$870 to 1,456	+61.0 to +92.0
Kentucky	2,645	1,552	+70.4

EDUCATION

Public Schools

	<u>Crittenden County</u>
Total Enrollment	1,788
Elementary	1,273
High School	515
Student-Teacher Ratio	21-1
Elementary	23-1
High School	17-1
State Rating of High School	Standard
Percent High School Graduates to College	29.5
Current Expenditures Per Pupil	\$424.54
Bonded Indebtedness, as of June 30, 1969	\$338,000

Vocational Schools

	<u>Nearest Area School</u>	<u>Nearest Extension Center</u>
Location	Madisonville	Morganfield
Miles Distant	39	31
Curriculum	Practical Nursing Surgical Technician Distributive Education Electronics (Industrial) Auto Body Repair Auto Mechanics, Carpentry Drafting, Electricity Machine Shop	Auto Mechanics Carpentry Drafting Electricity Machine Shop

Colleges and Universities

<u>Name</u>	<u>Area - Within 70 miles</u>		<u>Highest Degree Conferred</u>
	<u>Location</u>	<u>Enrollment</u>	
Murray State University	Murray	7,255	Masters
Paducah Community College	Paducah	999	Associate
Henderson Community College	Henderson	720	Associate
Madisonville Community College	Madisonville	247	Associate
Hopkinsville Community College	Hopkinsville	451	Associate

TRANSPORTATION

Rail

Line serving - Illinois Central Railroad

Services - Freight, switching, siding, REA Express

RAILWAY TRANSIT TIME FROM MARION, KENTUCKY, TO: 10/

<u>City</u>	<u>No. of Days</u> <u>CL</u>	<u>City</u>	<u>No. of Days</u> <u>CL</u>
Atlanta, Ga.	4	Los Angeles, Calif.	5
Birmingham, Ala.	3	Louisville, Ky.	2
Chicago, Ill.	3	Nashville, Tenn.	1
Cincinnati, Ohio	3	New Orleans, La.	4
Cleveland, Ohio	3	New York, N. Y.	4
Detroit, Mich.	4	Pittsburgh, Pa.	4
Knoxville, Tenn.	3	St. Louis, Mo.	3

Truck Service

Company

A & H Truck Line, Inc.
 Harper Truck Service, Inc.
 Arnold Ligon Truck Line, Inc.
 (Ellis Trucking)
 McLean Trucking Company
 Tennessee Cartage Co., Inc.

Home Office

Evansville, Indiana
 Paducah, Kentucky

 Lebanon, Kentucky
 Winston-Salem, North Carolina
 Nashville, Tennessee

HIGHWAY MILES AND TRUCK TRANSIT TIME IN DAYS FROM
MARION, KENTUCKY, TO SELECTED MARKET CENTERS

City	Highway Miles	Delivery Time <u>11/</u>		City	Highway Miles	Delivery Time	
		LTL	TL			LTL	TL
Atlanta, Ga.	381	2-3	1	Los Angeles, Calif.	1,993	7-9	4-7
Birmingham, Ala.	327	2-3	1-2	Louisville, Ky.	188	1-2	1
Chicago, Ill.	384	2	1	Nashville, Tenn.	123	1-2	1
Cincinnati, Ohio	276	2-3	1	New Orleans, La.	612	3-4	1-2
Cleveland, Ohio	525	3-4	1-2	New York, N. Y.	852	4-5	2-3
Detroit, Mich.	531	3-4	1	Pittsburgh, Pa.	583	3-4	1-2
Knoxville, Tenn.	316	2-3	1	St. Louis, Mo.	228	1-2	1

Air

Nearest Commercial

Barkley Field

Location: Paducah, Kentucky, 45 miles distant

Runways: 2

Length: 6,500 ft. ; 4,000 ft.

Traffic Control: Wind tee

Lighting: Beacon, boundary, obstruction, runway lights, and
runway end identification lights

Services: 80 and 100 octane; jet fuel; Delta, Ozark, Sun, and
Desoto Airlines; taxi; limousine; U-Drive-It;
storage; major A & E repairs

Bus

Southern Greyhound Bus Line

Taxi

3 companies - 24-hour service

Rental Services

U-Haul trailers

POWER AND FUEL

Electricity

Company serving Marion - Kentucky Utilities Company

Source of power - Kentucky Utilities Company

Total generating capacity - 740,000 KW

Industrial rates negotiated by - Kentucky Utilities Company, Industrial Development Department, Lexington, Kentucky

Company serving Crittenden County - Henderson-Union Rural Electric Cooperative

Source of power - Big Rivers Rural Electric Cooperative

Total generating capacity - 400,000 KW

Industrial rates negotiated by - Henderson-Union Rural Electric Cooperative, Henderson, Kentucky

Natural Gas

Company serving - Western Kentucky Gas Company

Source of supply - Texas Gas Transmission Corporation

Size of transmission lines - 4-inch

Distribution lines - 2 and 4 inches

BTU content - 1,000; Specific gravity - .65

Distribution pressure - 45 psi

Rates - For industrial rates contact Western Kentucky Gas Company, Owensboro, Kentucky

WATER AND SEWERAGE

Water

Company serving Marion - City of Marion Water & Sewer Service

Source - 2 lakes

Treatment plant capacity - 600,000 gpd.

Average daily consumption - 360,000 gallons

Peak daily consumption - 370,000 gallons

Type treatment - sedimentation, filtration, fluoridation

Storage capacity - 600,000 gallons

Average pressure - 70 psi

Average temperature - 60 degrees

Size mains - 12, 8, 6, and 4 inches

MONTHLY WATER RATES FOR WHOLESALE AND INDUSTRIAL CONSUMERS

First	2,000 gals.	\$3.00 (minimum)
Next	3,000 gals. @	1.00 per M gals.
Next	10,000 gals. @	.80 per M gals.
Next	10,000 gals. @	.65 per M gals.
Next	25,000 gals. @	.50 per M gals.
Next	50,000 gals. @	.40 per M gals.
All over	100,000 gals. @	.28 per M gals.

Surface water sources - Ohio and Tradewater Rivers

Average discharge - Ohio unlimited and Tradewater about 320 cfs at Olney

Expected ground water yield - along Ohio 500 to 1,000 gpm; balance to

5 to 50 gpm, except central portion with 50 to 200 gpm

Yield along main streams - 500 to 1,000 gpm along Ohio

Sewerage

Company serving Marion - City of Marion Water & Sewer Service

Design capacity - 1,400,000 gpd

Average daily flow - 324,000 gallons

Treatment - primary

Type treatment - aeration, clarifier

Treated effluent discharged into - drying bed and hauled away

Size of sanitary mains - 18, 15, and 8 inches

Size of storm mains - 12, 15, 18, and 24 inches

Rates - 90 percent of monthly water bill; industrial rates negotiated

LOCAL GOVERNMENT

City

Structure - Mayor - 4-year term; 6 councilmen - 2-year terms
 Budget 1969 - General Fund \$50,220; Water and Sewer Fund \$79,500
 Fees and licenses - Occupational licenses range from \$12.50 to \$100.00
 per year for manufacturers, based on gross receipts; Commercial \$5
 to \$225 annually

County

Structure - County Judge - 4-year term; 8 magistrates - 4-year terms
 Budget 1969-70 - General Fund \$63,819; Road Fund \$29,600

Assessed Value of Property - 1969

<u>Classes of Property*</u>	<u>Marion</u>	<u>Crittenden County</u>
Real Estate and Tangibles	\$11,932,942	
Real Estate		\$29,607,820
Tangibles		6,111,140
Public Service	921,504	3,936,110

Local General Property Tax Rates Per \$100 of Assessed Valuation - 1969 ^{12/}

<u>Taxing Unit**</u>	<u>Marion</u>	<u>Crittenden County</u>
State	\$.015	\$.015
County	.209	.209
School	.449	.449
City	.288	
Total	\$.961	\$.673

*Property assessed at 100 percent of fair value.

**Manufacturing machinery, raw materials inventories and goods in process inventories are not subject to local tax. State rate is only \$0.15 per \$100.

Safety

<u>Police</u>	<u>Marion</u>	<u>Crittenden County</u>
Total staff	4 (part-time)	3
Radio-patrol cars	1	1

Fire

American Insurance Association Fire Rating	7
Volunteers	15
Equipment:	
500 gpm pumpers	2

Rescue Service

Civil Defense Rescue Squad
Number of volunteers - 30

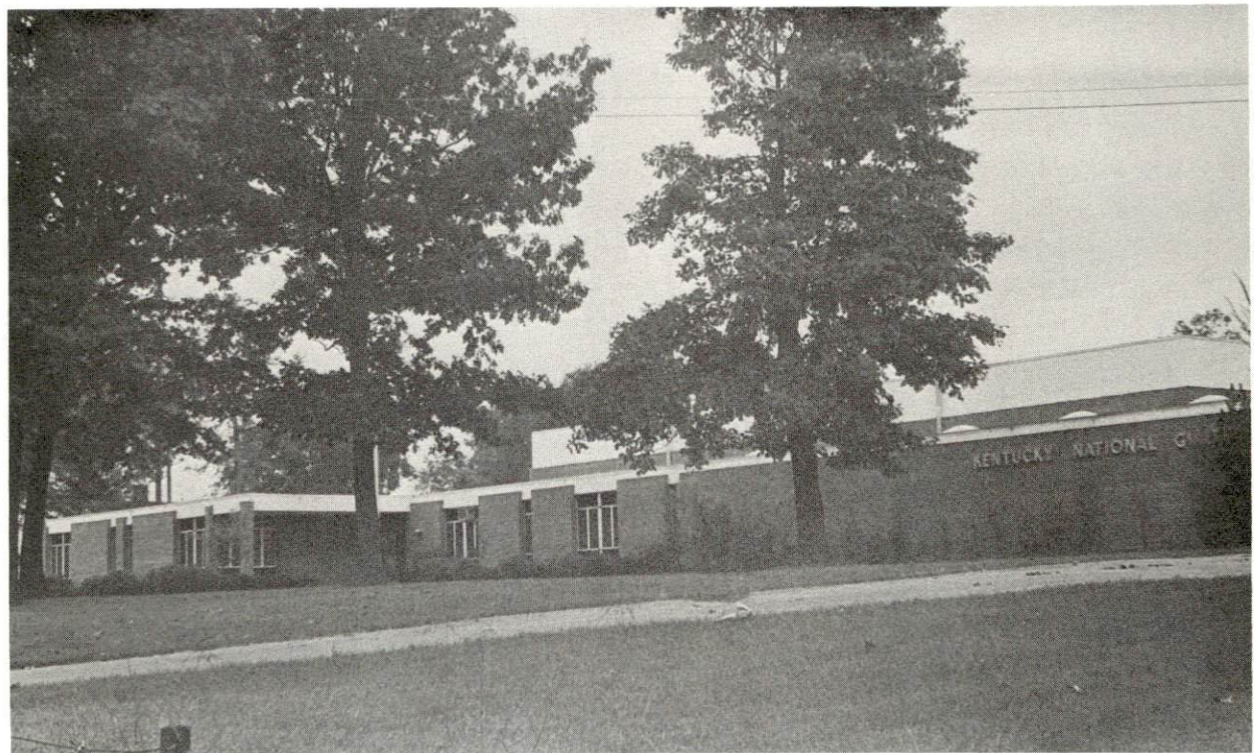
Equipment - pickup truck, portable small power generator, 1 master fall-out detector, citizens band and short wave radio

Sanitation

	<u>Marion</u>
Type service	private
Cost:	
residential	\$2 monthly
business	\$2 monthly
Collection frequency:	
residential	weekly
business	weekly
Disposal method	dump



CRITTENDEN COUNTY COURT HOUSE



KENTUCKY NATIONAL GUARD BUILDING

HEALTH

Hospitals

<u>General Hospital</u>	<u>Location</u>	<u>Beds</u>
Crittenden County Hospital	Marion, Kentucky	28
General hospital facilities - laboratory, X-ray, emergency room, delivery room, nursery		
Medical staff - 2 medical doctors, 8 registered nurses, 7 licensed practical nurses, 1 graduate licensed practical nurse, 1 orthodontist, 1 dietitian, 1 radiologist, 1 pathologist		

Nursing Homes

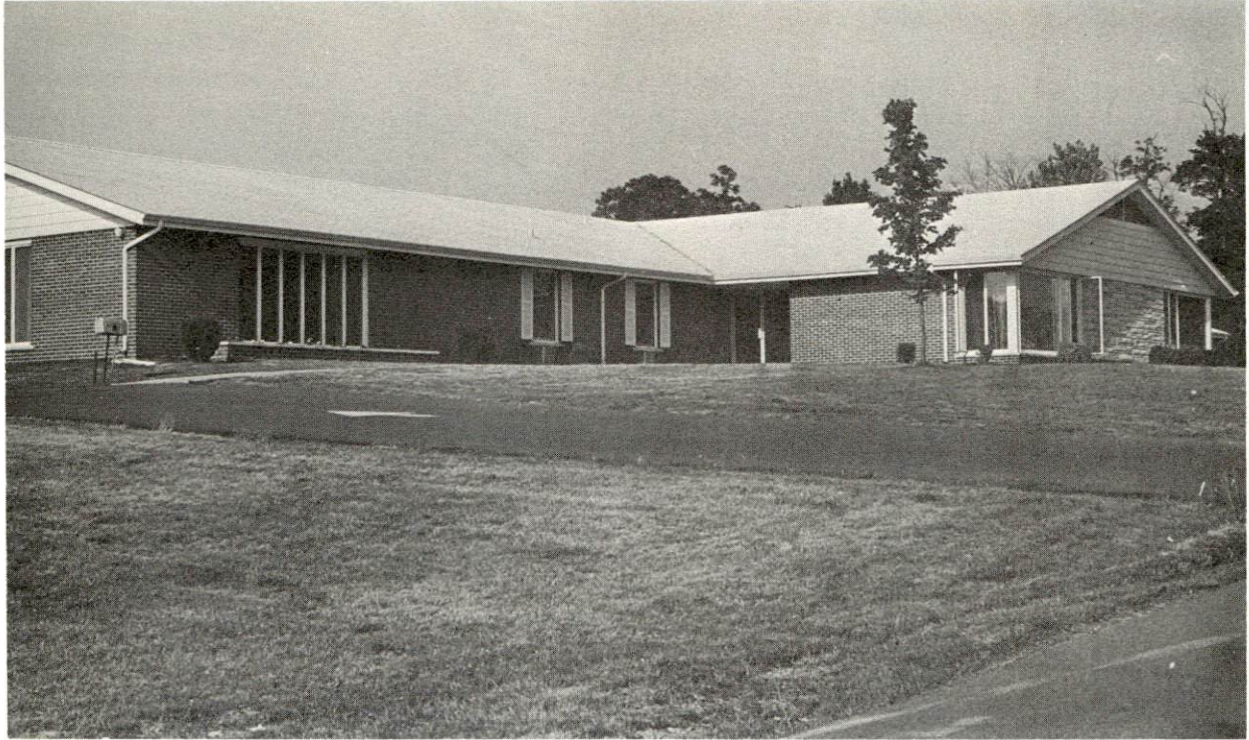
	<u>Number</u>	<u>Beds</u>
Extended care homes	1	50
Personal care homes	2	28

Public Health

Facility - Crittenden County Health Department

Staff - 1 registered nurse, 1 clerk, 1 sanitarian (part-time)

Budget 1969-70 - \$23,197



NURSING HOME



CRITTENDEN COUNTY HEALTH CENTER

OTHER LOCAL FACILITIES

Communications

Telephone - South Central Bell Telephone Company
Services - standard

Telegraph - Western Union
Services - teletype from Hopkinsville

Postal -
Class - 1 U. S. Post Office
Mail received - twice daily
Mail dispatched - twice daily

Newspapers - Crittenden Press
Weekly and circulation - 3,250
Others papers received from - Louisville and Paducah, Kentucky

Radio - WMJL
Stations received from - Henderson, Paducah, and Louisville, Kentucky;
Evansville, Indiana

Television -
Reception from - Paducah, Kentucky; Evansville, Indiana
Kentucky Educational Television - Madisonville transmitter, Channel 35

Library Services

Public Libraries - Crittenden County Public Library
Size collection - 15,000 volumes
Circulation, 1969 - 32,182
Services - records, movie projector, bookmobile, slide and film strip
projector

Religious Institutions

Number of churches - 13
Denominations - Baptist, Presbyterian, Methodist, Church of Christ,
Christian, Church of God, Pentecostal, Catholic



MARION BAPTIST CHURCH



MARION METHODIST CHURCH

Financial Institutions

<u>Bank</u>	<u>Statement as of December 31, 1969</u>	
	<u>Assets</u>	<u>Deposits</u>
Farmers Bank and Trust Co.	\$6,847,653.19	\$5,912,438.06
The Peoples Bank	2,867,011.32	2,534,118.80

Hotels and Motels

Number - 5
Units - 52

Clubs and Organizations

Business and Civic - Business Men's Association, Jaycees, Rotary,
Ministerial Association

Fraternal - Masonic Lodge, American Legion, Woodmen of the World,
Oddfellows

Women's - Federation of Women's Club, Eastern Star, American Legion,
Auxiliary, Homemakers

Youth - 4-H, FFA, FBLA, Boy Scouts, Girl Scouts, Little League baseball,
Peewee League, Pony League, Little League football, FHA

Other - Town & Country Riding Club, Gun Club, Crittenden County
Historic Society

RECREATION

Local

Public Recreation Facilities

- Park - 1
- Playgrounds - 2
- Tennis court - 1
- Baseball diamonds - 2
- Football field - 1
- Other - riding ring, shuffleboard, archery, horseshoes

Private Recreation Facilities

- Country club - 1
- Golf course - 1
- Swimming pool - 1
- Movie theaters - 2
- Other - billiard parlor

Tourist Attractions

- Bob Wheeler Museum

Area (Within 70 miles)

- Kentucky Dam Village State Resort Park
- Kenlake State Resort Park
- Land Between the Lakes National Recreational Area
- Lake Barkley State Park
- Pennyrile Forest State Resort Park

AGRICULTURE - NATURAL RESOURCES - CLIMATE

Agriculture 13/

	<u>Crittenden County</u>	<u>Labor Market Area</u>
Total land area (acres)	233,600	1,258,240
Percent of area in farm land	64.4	66.5
Number of farms	755	4,089
Average size of farms (acres)	199.2	204.7
1964 value of all farm products	\$2,207,687	\$23,486,211
Value per farm	2,924	5,743
Total crop sales	597,656	8,745,789
Total livestock & livestock products	1,610,029	14,725,293
1967 agricultural production included:		
Burley tobacco (lbs.)	15,000	28,187,000
Corn (bu.)	804,000	51,591,000
Cattle and calves (number)	22,800	149,200
Hogs and pigs (number)	20,700	181,200
Milk production (1966) (lbs.)	1,200,000	18,030,000

Natural Resources

Principal mineral resources	Limestone, fluorspar
Other mineral resources	Coal, petroleum, certain vein minerals
Acres of commercial forest land	87,200
Most abundant tree species	Red oak, white oak, hickory, yellow poplar, ash, sweetgum, hard maple

Climate 14/

	<u>Crittenden County</u>
Temperature	
Annual mean (30-year record)	57.0 degrees
Average annual (1969)	54.5 degrees
Record highest July, 1966 (9-year record)	104 degrees
Record lowest January, 1963 (9-year record)	- 18 degrees
Seasonal heating degree-days (30-year record)	4,435
Precipitation	
Mean annual total (30-year record)	41.45 inches
Mean annual snow and sleet (29-year record)	12.3 inches
Total precipitation 1969	49.23 inches
Mean number days precipitation (29-year record) (.01 inches or more)	114
Average number days thunderstorms (29-year record)	47
Prevailing winds (14-year record)	south-southwest

HISTORY

Crittenden County, the ninety-first county formed in Kentucky, dates from 1842. Its territory was taken from Livingston County. The surface of Crittenden is generally broken, high, and rolling. It is well drained by numerous creeks which flow into the Tradewater, Cumberland, and Ohio Rivers. Its soil is suited for the growing of a great many agricultural crops, especially corn, wheat, soybeans, and hay.

The county was named in honor of John J. Crittenden, one of Kentucky's sons upon whose shoulders the mantle of Henry Clay fell at the latter's death in 1852. Only a few Kentucky counties were named for a native son while he was still living--and Crittenden was among the first to receive such an honor.

Marion, the county seat, was named for General Francis Marion of Revolutionary War fame. It was incorporated in 1844, two years after Crittenden County was established. It is located near the center of the county's 365 square miles of territory. The first courthouse was burned during the Civil War by General H. B. Lyon of the Confederacy to prevent its falling into the hands of Union forces. Marion was the home of two United States Senators--William J. Deboe, Republican, and Ollie M. James, Democrat. These men served in the U. S. Congress during a period of twenty years. James gained renown as an orator both for his ability to speak and for convincing arguments.

A small amount of petroleum is produced in the county. A large amount of quarried limestone is crushed for concrete and road building purposes. Fluorspar and barite are mined for use in oil-well drilling. Crittenden County is part of the Kentucky-Illinois district which is the largest fluorspar producing area in the country. Small amounts of lead and zinc have been secured in mining fluorspar. Coal has been produced since 1889, but the production has been irregular and in rather small amounts. These minerals, taken collectively, have an important place in the county's economy.

SOURCES OF INFORMATION

- 1/ U.S. Department of Commerce, Bureau of the Census, Census of Population, 1950, 1960, 1970 (Preliminary figures).
- 2/ Kentucky Department of Economic Security, Division of Research and Statistics.
- 3/ Kentucky Department of Economic Security, Number of Workers in Manufacturing Industries Covered by Unemployment Insurance Law Classified by Industry and County, September 1959, September 1969.
- 4/ Kentucky Department of Commerce, 1970 Kentucky Directory of Manufacturers.
- 5/ Kentucky Department of Economic Security, Division of Employment Service, Henderson Office.
- 6/ Kentucky Department of Economic Security, Kentucky Labor Supply Estimates by County, January 1970.
- 7/ Kentucky Department of Commerce, Future Labor Supply by 1976.
- 8/ University of Kentucky, Office of Development Services and Business Research, Total Personal Income For Kentucky.
- 9/ University of Kentucky, Office of Development Services and Business Research, Per Capita Income in Kentucky.
- 10/ Illinois Central Railroad, Louisville, Kentucky.
- 11/ McLean Trucking Company, Winston-Salem, North Carolina.
- 12/ Kentucky Department of Revenue, Kentucky Property Tax Rates, 1969.
- 13/ U.S. Department of Commerce, Bureau of the Census, Census of Agriculture, 1964. U.S. Department of Agriculture and Kentucky Department of Agriculture, Kentucky Agricultural Statistics, 1968.
- 14/ U.S. Department of Commerce, Environmental Science Services Administration, Climatological Data, 1969.

All other information was obtained from governmental offices, local businesses and organizations.

This copy has been prepared by the Kentucky Department of Commerce,
Division of Research and Planning, and the cost of printing paid from
state funds.