

1970

Industrial Resources: Fayette County - Lexington

Kentucky Library Research Collections
Western Kentucky University, spcol@wku.edu

Follow this and additional works at: https://digitalcommons.wku.edu/fayette_cty

 Part of the [Business Administration, Management, and Operations Commons](#), [Growth and Development Commons](#), and the [Infrastructure Commons](#)

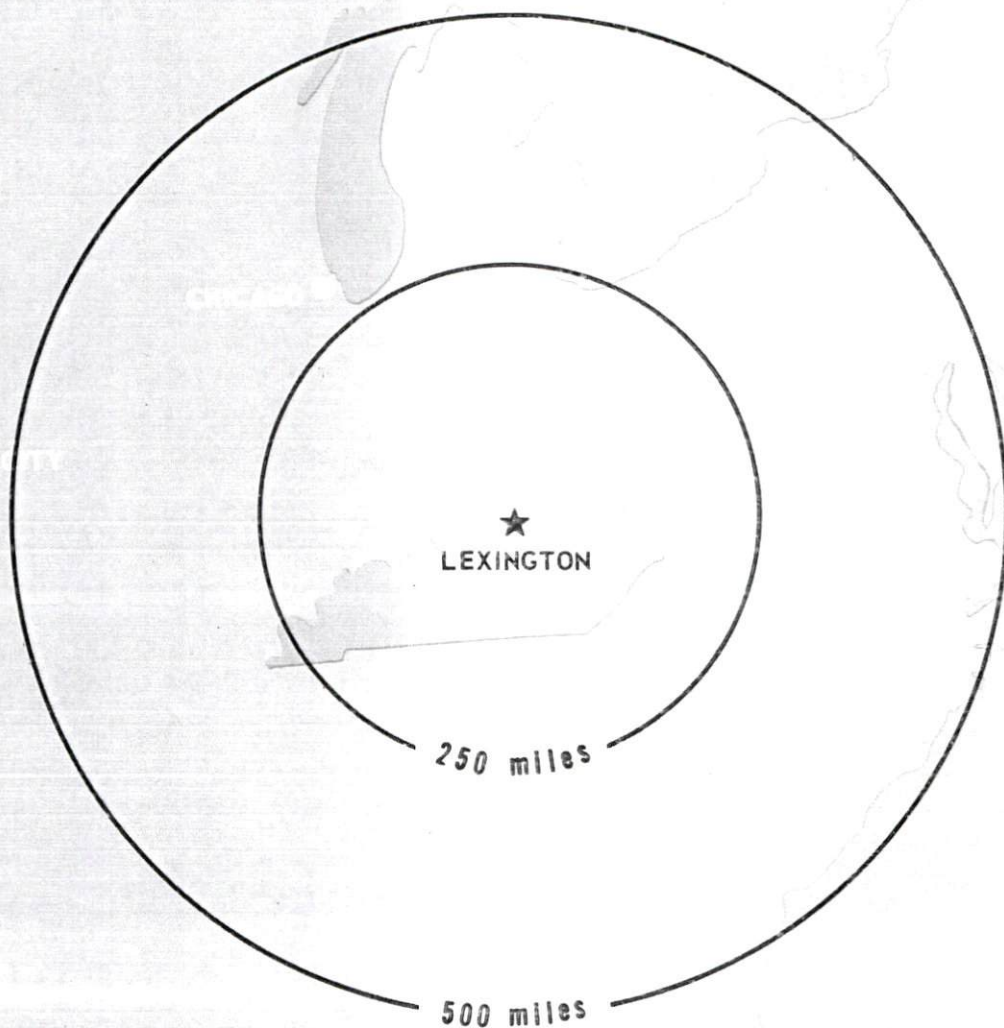
Recommended Citation

Kentucky Library Research Collections, "Industrial Resources: Fayette County - Lexington" (1970). *Fayette County*. Paper 13.
https://digitalcommons.wku.edu/fayette_cty/13

This Report is brought to you for free and open access by TopSCHOLAR®. It has been accepted for inclusion in Fayette County by an authorized administrator of TopSCHOLAR®. For more information, please contact topscholar@wku.edu.

INDUSTRIAL RESOURCES

LEXINGTON, KENTUCKY



LEXINGTON INDUSTRIAL SITES

1970

For additional information concerning the following sites, contact D. Ray Gillespie, 239 North Broadway, Lexington, Kentucky, Phone 254-4447; or the Kentucky Department of Commerce, Washington and Wapping Streets, Frankfort, Kentucky, 40601.

SITE # 1: ACREAGE AND TOPOGRAPHY: 10 acres, level
 LOCATION: Northwest side of city off Mercer Road
 ZONING: Light industrial
 HIGHWAY ACCESS: Access road required, 400 feet from Mercer Road
 RAILROADS: Southern Railway along western boundary of site
 WATER: Lexington Water Company
 SIZE LINE: 12-inch
 GAS: Columbia Gas of Kentucky, Inc.
 SIZE MAIN: 12-inch
 ELECTRICITY: Kentucky Utilities Company
 SEWERAGE: Lexington Sewerage Department
 OWNERSHIP: Southern Railway System

SITE # 2: ACREAGE AND TOPOGRAPHY: 27 acres, gently rolling
 LOCATION: North of city facing U.S. 25
 ZONING: Agricultural
 HIGHWAY ACCESS: U.S. 25
 RAILROADS: Not rail served
 WATER: Lexington Water Company
 SIZE LINE: 8-inch
 GAS: Columbia Gas of Kentucky, Inc.
 SIZE MAIN: 8-inch
 ELECTRICITY: Kentucky Utilities Company
 SEWERAGE: None
 OPTIONED BY: Oral option to Chamber of Commerce

SITE # 3: ACREAGE AND TOPOGRAPHY: 392.9 acres, level to gently rolling
 LOCATION: North of city on U.S. 25
 ZONING: Agricultural
 HIGHWAY ACCESS: U.S. 25 along western boundary of site
 RAILROADS: Not rail served
 WATER: Lexington Water Company
 SIZE LINE: 8-inch
 GAS: Columbia Gas of Kentucky, Inc.
 SIZE MAIN: 8-inch
 ELECTRICITY: Kentucky Utilities Company
 SEWERAGE: None
 OPTIONED BY: Oral option to Chamber of Commerce

SITE # 4: ACREAGE AND TOPOGRAPHY: 40 acres, level
 LOCATION: Partially within northern city limits
 ZONING: Light industrial
 HIGHWAY ACCESS: Russell Cave Road along eastern boundary of site
 RAILROADS: Louisville and Nashville Railroad along west-northwestern boundary of site
 WATER: Lexington Water Company
 SIZE LINE: 16-inch line along eastern boundary
 GAS: Columbia Gas of Kentucky, Inc.
 SIZE MAIN: 8-inch main on site
 ELECTRICITY: Kentucky Utilities Company
 SEWERAGE: Lexington Sewerage Department
 OWNERSHIP: International Order of Odd Fellows
 AGENT: Citizens Union Bank, Lexington, Kentucky

SITE # 5: ACREAGE AND TOPOGRAPHY: \pm 1000 acres, gently rolling
 LOCATION: One-half mile east of city
 ZONING: Agricultural
 HIGHWAY ACCESS: Site is bound on west by Liberty Road, on south by Kentucky 1425, on east by I-75
 RAILROADS: Chesapeake and Ohio Railway along southern boundary
 WATER: Lexington Water Company
 SIZE LINE: 12-inch line 1.5 miles from southern boundary; 6-inch line .5 mile from site
 GAS: Columbia Gas of Kentucky, Inc.
 SIZE MAIN: 12-inch main on site
 ELECTRICITY: Kentucky Utilities Company
 SEWERAGE: None
 OWNERSHIP: Madden Farm
 AGENT: First Security National Bank, Lexington, Kentucky

SITE # 6: ACREAGE AND TOPOGRAPHY: 140 acres, gently rolling
 LOCATION: Southeast of city on Todds Road
 ZONING: Agricultural
 HIGHWAY ACCESS: Kentucky 1425 along southern boundary of site, Liberty Road
 RAILROADS: Chesapeake and Ohio Railway
 WATER: Lexington Water Company
 SIZE LINE: 6-inch
 GAS: Columbia Gas of Kentucky, Inc.
 SIZE MAIN: 12-inch
 ELECTRICITY: Kentucky Utilities Company
 SEWERAGE: None
 OPTIONED BY: Oral option to Chamber of Commerce

MELBOURNE INDUSTRIAL PARK

ACREAGE AND TOPOGRAPHY: 165.42 total acres in park; 119.47 acres now available
 LOCATION: North side of city on New Circle Road
 ZONING: Light industrial
 HIGHWAY ACCESS: U.S. 25, Newtown Pike access to New Circle Road
 RAILROADS: Not rail served
 WATER: Lexington Water Company
 SIZE LINE: 20-inch
 GAS: Columbia Gas of Kentucky, Inc.
 SIZE MAIN: 4-and 6-inch mains on site
 ELECTRICITY: Kentucky Utilities Company
 SEWERAGE: Lexington Sewerage Department
 OWNERSHIP: Melbourne, Inc.
 Julius Fister, President
 Vincent Fister, Sr. - Agent

BLUE SKY INDUSTRIAL ESTATES

ACREAGE AND TOPOGRAPHY: 108 acres, gently rolling
 LOCATION: Southeast of city on Kentucky 418
 ZONING: Industrial
 HIGHWAY ACCESS: Kentucky 418, I-75 interchange 1,500 feet
 RAILROADS: Not rail served
 WATER: Athens - Boonesboro Water District
 GAS: Columbia Gas of Kentucky, Inc.
 ELECTRICITY: Kentucky Utilities Company
 SEWERAGE: Private treatment plant
 OWNERSHIP: Blue Sky Estates
 Richard Sutherland, Jr. - Agent



- A WABCO
- B Cooper-Jarrett, Inc.
- C Coca-Cola Bottling Co.
- D United Parcel Service
- E American Can Co.
- F Square D Co.
- G Mengel Co.
- H Vogue Rattan Mfg. Co.
- I Wickes Lumber Co.
- J Trane Co.
- K IBM
- L General Electric Plant

SITE-2
27 Ac.
W.G.E.

SITE-3
392.9 Ac.
W.G.E.

MELBOURNE IND. PARK
119.47 Ac.
W.G.E.S.

SITE-1
10 Ac.
W.G.E.S.

SITE-4
40 Ac.
W.G.E.S.

LEXINGTON

LEXINGTON

LEXINGTON

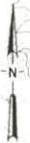
LEXINGTON

LEGEND
 UTILITIES AVAILABLE
 W- WATER
 G- GAS
 E- ELECTRICITY
 S- SEWERAGE

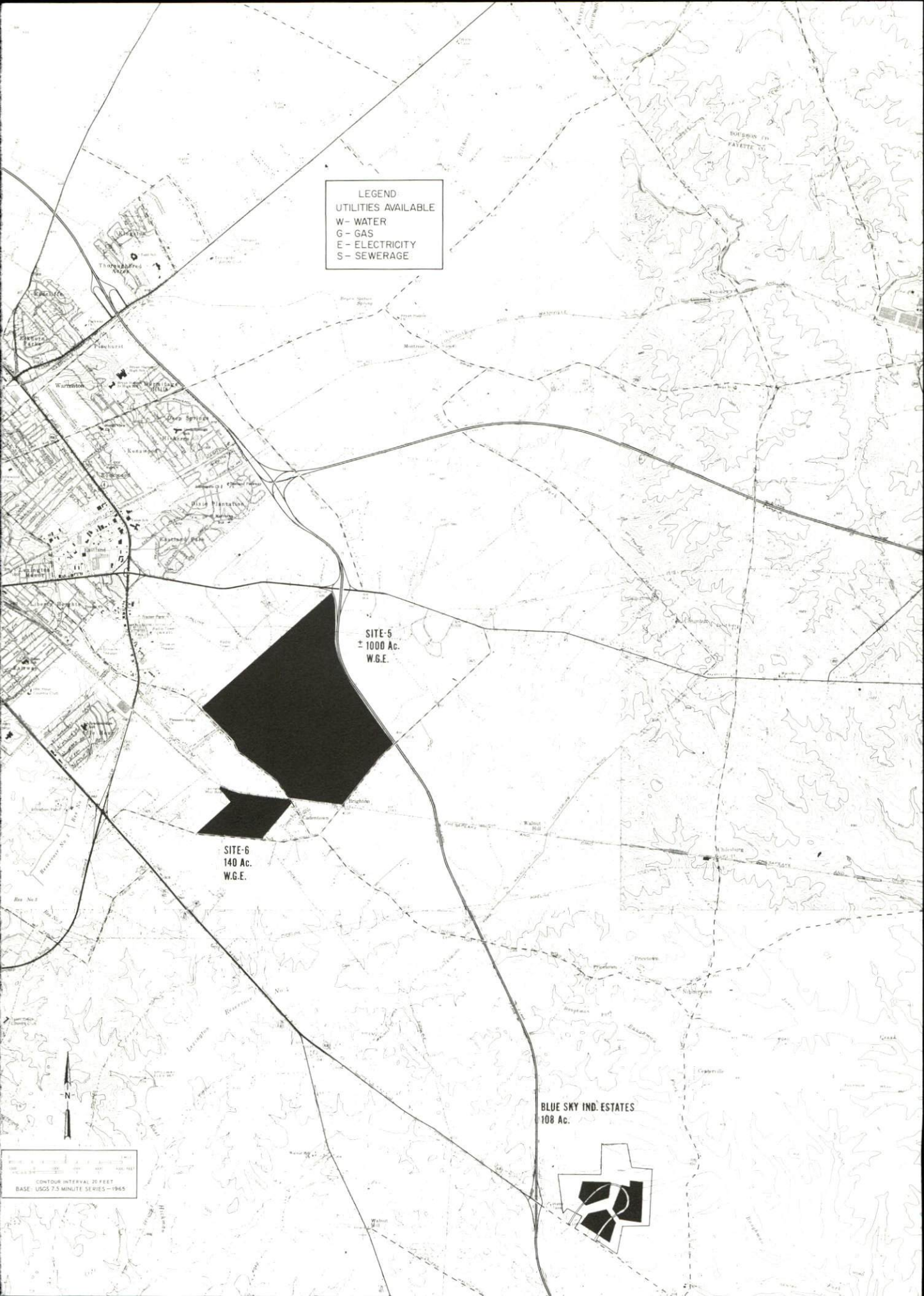
SITE-5
 ± 1000 Ac.
 W.G.E.

SITE-6
 140 Ac.
 W.G.E.

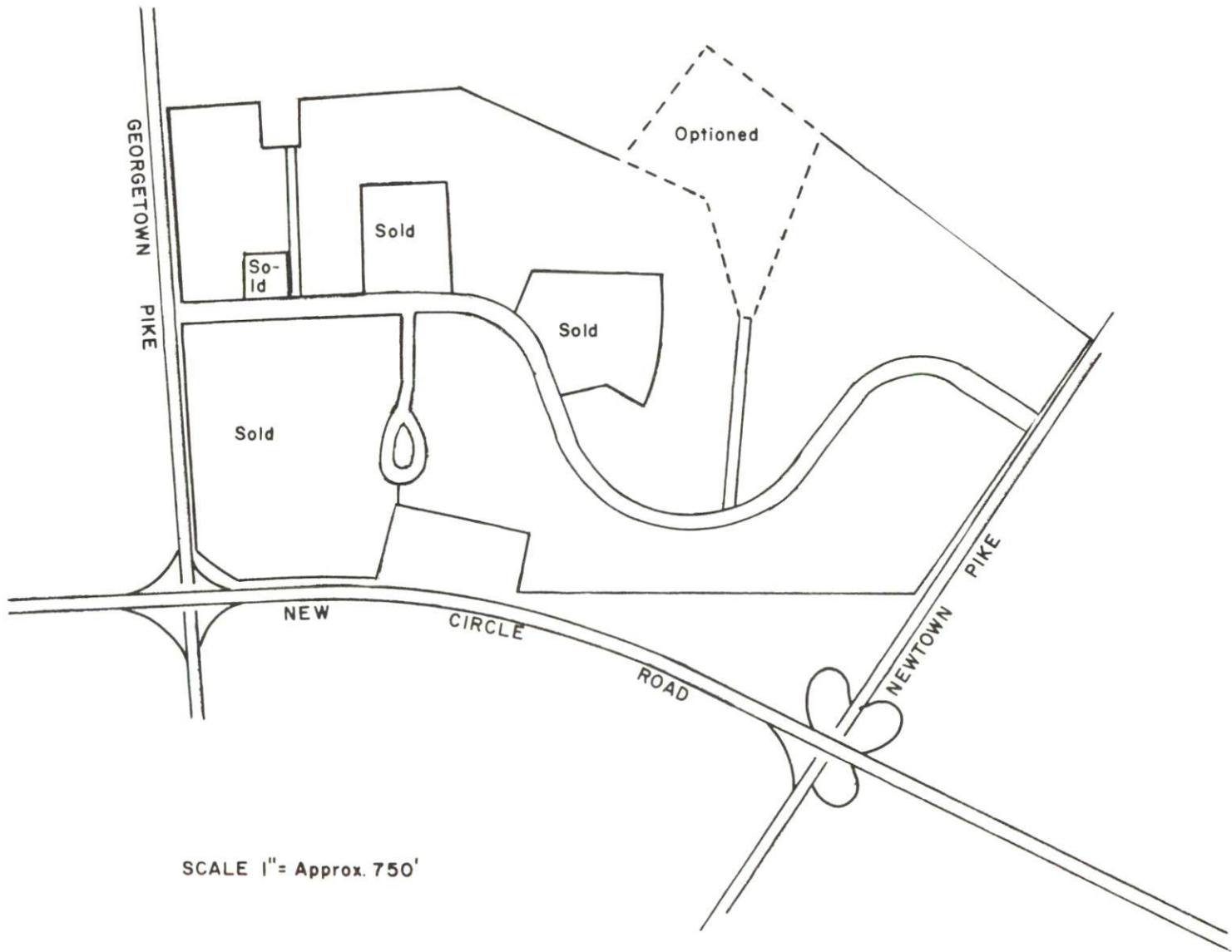
BLUE SKY IND. ESTATES
 108 Ac.



CONTOUR INTERVAL 20 FEET
 BASE: USGS 7.5 MINUTE SERIES—1965



MELBOURNE INDUSTRIAL PARK



SCALE 1" = Approx. 750'

INDUSTRIAL RESOURCES
LEXINGTON, KENTUCKY

Prepared by
The Kentucky Department of Commerce
in cooperation with
The Greater Lexington Area Chamber of Commerce
1970

This copy has been prepared by the Kentucky Department of Commerce,
Division of Research and Planning, and the cost of printing paid from
state funds.

TABLE OF CONTENTS

<u>Chapter</u>	<u>Page</u>
INDUSTRIAL SITES	i
LEXINGTON, KENTUCKY - A RESOURCE PROFILE	1
THE LABOR MARKET	6
Population Trends	6
General Employment Characteristics, 1969	6
Manufacturing Employment Trends by Industry	6
Major Lexington Manufacturing Firms, Their Products and Employment	7
Wage Rates for Selected Occupations	9
Labor Organizations	9
Current and Future Labor Supply	10
Total Personal Income	10
Per Capita Personal Income	10
EDUCATION	11
Public Schools	11
Private and Parochial Schools	11
Vocational Schools	12
Colleges and Universities	12
TRANSPORTATION	15
Rail	15
Truck Service	15
Air	16
Bus	17
Taxi	17
Rental Services	17
POWER AND FUEL	18
Electricity	18
Natural Gas	18
WATER AND SEWERAGE	19
Water	19
Sewerage	20

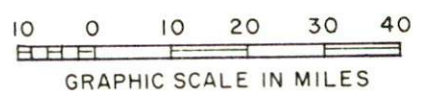
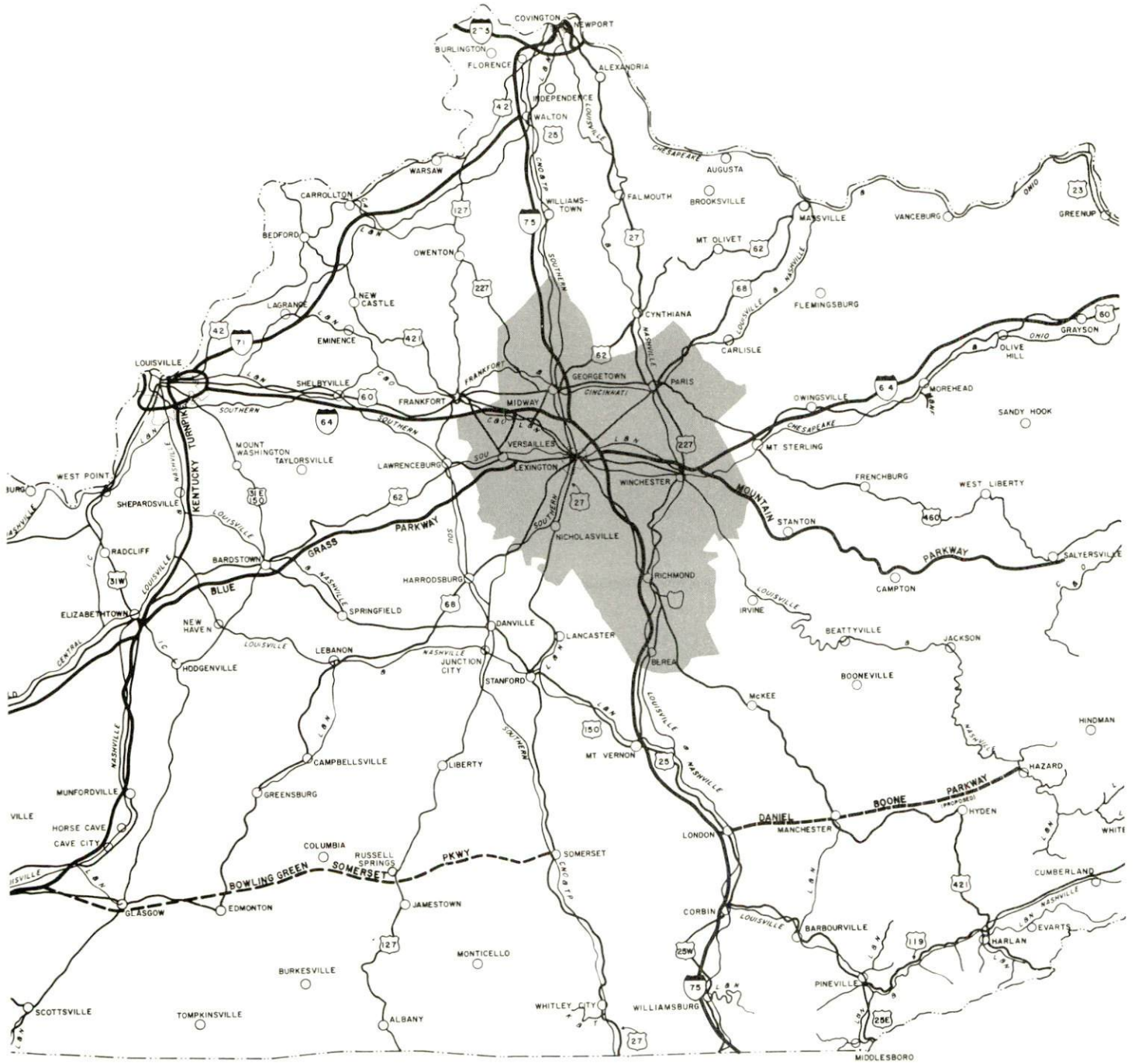
<u>Chapter</u>	<u>Page</u>
LOCAL GOVERNMENT21
City21
County21
Assessed Value of Property21
Local General Property Tax Rates Per \$100 of Assessed Valuation - 197021
Planning and Zoning22
Safety22
Police22
Fire22
Sanitation23
HEALTH24
Hospitals24
Nursing Homes24
Day Care Centers24
Public Health24
OTHER LOCAL FACILITIES26
Communications26
Library Services26
Religious Institutions27
Financial Institutions27
Hotels and Motels27
Clubs and Organizations27
RECREATION29
Local29
Area30
AGRICULTURE - NATURAL RESOURCES - CLIMATE31
Agriculture31
Natural Resources31
Climate31
HISTORY32



AERIAL VIEW OF LEXINGTON, KENTUCKY

LEXINGTON LABOR MARKET AREA

*Shaded area denotes labor market area



LEXINGTON, KENTUCKY - A RESOURCE PROFILE

Location

Lexington, in the heart of the Bluegrass Region of Kentucky, is an attractive, thriving city with a metropolitan population of over 172,000. Located on Interstate 75, Interstate 64, and the Bluegrass Parkway, Lexington forms the southeastern apex of the industrial triangle anchored by Louisville on the west and the Cincinnati metropolitan area on the north. Within the 80-mile legs of the triangle, is one-third of the state's population and one-half of its manufacturing jobs.

Lexington is an unusual blending of the industriousness of the Midwest and the adaptability and progress of the "new south." Farm estates and Revolutionary War customs and traditions stand serene, and welcome the sounds of bulldozers, electric saws and hammers, as new roads, new manufacturing plants, new schools and other facilities take shape almost daily. Lexington, named after the first battle in the War for Independence, is encircled by mushrooming suburbs - reflecting its phenomenal population growth in the last 10 years - and history-rich towns like Winchester, Versailles, Paris, and Danville; landscaped by beautiful countryside (covered by *Poa pratensis* or bluish-green grass); and laced by modern four-lane highways and tree-shaded country lanes.

Though no section in the United States is about to challenge the Bluegrass' long-held position as the world's largest burley tobacco market and the capital of Thoroughbred horse-breeding, the area, because of its many amenities, has experienced an extraordinary rate of industrial growth in postwar years. Where once tobacco, whiskey and horses were the area's principal industries, Lexington and her sister cities today produce a startling diversity of products, ranging from electric typewriters to peanut butter and from parachutes to electronic equipment. The tobacco farmer and the country gentlemen (who is more likely to raise cattle and sheep than horses) is as much at home in the Bluegrass as the industrialist and the physicist. And the area's increasing academic and cosmopolitan atmosphere is just as congenial to Van Cliburn and rock as it is to Op art and farmers Almanacs.

The Economic Framework

Total employment in Fayette County averaged 92,100 in 1969 with manufacturing providing 17,300 of these jobs. During the first nine years of the decade, manufacturing employment increased by slightly more than 75 percent. The major industry in the county is machinery and metal products.

Per capita income in the county in 1968 was \$3,252, almost \$600 above the Kentucky average and ranked sixth among the state's 120 counties. In a word, the local economy is prosperous.

Lexington is the hub of a labor market area that includes Fayette and its six surrounding counties. Area employment in 1969 totaled 136,900 including 10,100 in agriculture, slightly more than 37,900 in trade and services and 30,050 in government. Manufacturing furnishes more than 28,000 jobs. Area industrial employment has increased by almost 80 percent since 1959 with the sharpest gains in the machinery and metal products industries.

Despite important industrial gains in recent years the area still has a deficit of 2,560 manufacturing jobs when measured against the national industrial employment-population ratio. This indicates an area where the potential for additional manufacturing production is excellent.

Resources For Growth

1. There is a current labor supply of 3,075 men and 3,140 women available for industrial jobs in the labor market area. In addition, 12,940 men and 12,600 women will become 18 years of age by 1976 and potentially available for work.

2. The local transportation capability is good. Three railroads provide Lexington with complete rail services including piggyback facilities. There is easy access to Interstate 75 and Interstate 64 which are major highway arteries into the industrial south, midwest and east. Only a short distance from the city is the extremity of the Bluegrass Parkway, an important link to the west. Five airlines provide commercial service to Lexington.

3. Energy - Natural gas is provided by Columbia Gas of Kentucky, Inc., and electricity by Kentucky Utilities Company. The local water supply from the Kentucky River is more than adequate for continued growth.

4. Industrial sites - Lexington has six industrial sites and two industrial parks.

5. Education is an important growth asset for Lexington with educational opportunities ranging from Montessori preschools through public, private, and parochial elementary and high schools to business colleges, universities, and theological seminaries. The Fayette County School System is rated as one of the most outstanding in Kentucky. Within a 50-mile radius of Lexington are eight senior colleges and universities and two junior colleges. At Lexington, are the University of Kentucky and Transylvania University.

The University of Kentucky is the state's primary public institution of higher learning. Opportunity for specialization is provided through ten colleges, schools of architecture, allied health professions, home economics, library science, a graduate school and a division of university extension.

Transylvania University, a private institution founded in 1780, offers the unique Masters of Inter-American Business Administration.

6. Industrial Research - The University of Kentucky Research Foundation, an administrative division of the University, solicits and administers research contracts, grants, and gifts. Spindletop Research, the largest private research firm in the state, is also located in Lexington. It offers professional, scientific and management services to clients on a contractual basis.

Community Programs For Improvement

A federally assisted multi-million dollar Urban Renewal project is currently underway in the central business district of Lexington. The completed project envisions a downtown one-way couplet of streets, a 14-story Hilton Motor Inn, and a high-rise bank-office building. A \$1.5 million removal and relocation of railroad tracks from Vine Street, which will carry eastbound traffic, has already been completed. A 1 1/4-mile section of Vine Street is being rebuilt to include a widened road area, landscaping, wide sidewalks and an open mall, in an effort to not only expedite traffic but also to beautify the downtown area. The land for the Hilton Motor Inn is under contract and Citizens Union Bank has acquired the land for its new bank-office building. The city is in the process of acquiring land along Vine Street to be used for a combined exhibition hall and sports arena to seat 22,000.

A \$2 million sewerage facilities expansion program is underway in Lexington. The project includes expansion of the existing treatment plant, and construction of a new treatment plant, trunk lines and holding lagoons.

Both Lexington and Fayette County have been attentive to transportation planning to accommodate the added number of motor vehicles which has accompanied the metropolitan area's industrial and residential growth. The New Circle Road, a 19 1/2-mile limited access road which encircles Lexington, was completed in 1969 and has considerably reduced traffic on other major thoroughfares. Nicholasville Road, a main artery leading to the center of Lexington, is being widened to the Fayette-Jessamine County line. Under the Kentucky Highway Department's "Needs Plan" for Lexington, three projects are now under survey involving the extension of two roads and the widening of Paris Pike into a four-lane highway. In the immediate future

under a federal project for traffic safety and capacity, 30 intersections in Lexington will undergo construction of right-hand turn lanes to expedite traffic. The need for additional cargo transport has been met with the opening of an air freight airlines at Lexington's Blue Grass Field.

Three shopping areas are privately being developed to serve Lexington's growing suburban population. The Lansdowne Shopping Center is nearly complete, and the Fayette Mall and the Lexington Mall will each have 45 to 50 business enterprises upon completion.

The city has just recently opened a municipal 18-hole golf course in Lexington, and the county has undertaken an extensive parks program which involves the creation of four public parks totaling 156 acres outside the city limits. The 105-acre Shillito Park to be constructed near the Fayette Mall will provide ample opportunity for both passive and active recreation. Facilities will include picnic areas, hiking trails, football fields, lighted and non-lighted softball and baseball fields, a concession stand, a zoo, and a swimming pool.

Fayette County anticipates the completion of a contract by July, 1971, for the construction of a new jail. A jail study now in progress calls for a facility which reflects a modern approach to correctional institutions. In addition, the county will acquire more space for administration offices and a new office building in which the county road department and the county police department will be housed together.

Recreation, Entertainment, and Livability

Lexington and the Bluegrass Region offer the full spectrum of sophisticated entertainment, cultural and sporting events. The Central Kentucky Concert and Lecture Association presents an annual subscription series which brings to the city world-famous groups and individuals in the arts and sciences. There are three local symphony orchestras, theatre groups which present more than twenty plays each year, and scores of free concerts, lectures and art exhibitions at Transylvania and the University of Kentucky.

The finest Thoroughbred and harness racing in the world is available at Keeneland Race Course and the Big Red Mile Trotting Track at several meets each year. The University of Kentucky provides nine months of sports excitement each year including the team coached by the Baron of Basketball, Adolph Rupp.

The scenic landscape of thoroughbred horse farms encourages relaxing drives through Fayette County, and the area is a paradise for the antique and handicraft collector. Reminiscent of Lexington's rich historic past are the preserved homes of Mary Todd Lincoln and General John Hunt Morgan. Ashland, the estate of Henry Clay, is especially beautiful in spring when the gardens are in full bloom.

Within a 50-mile radius of Lexington are five state parks, a national forest and Herrington Lake, providing ample camping grounds, water sports and picnic areas.

THE LABOR MARKET

POPULATION TRENDS ^{1/}

Area	Population			Percent Change	
	1970	1960	1950	1960-70	1950-60
Lexington	107,944	62,810	55,534	+71.9	+13.1
Labor Market Area	308,018	245,555	207,386	+25.4	+18.4
Fayette County	172,927	131,906	100,746	+31.1	+30.9
Bourbon County	18,035	18,178	17,752	- 0.8	+ 2.4
Clark County	24,473	21,075	18,898	+16.1	+11.5
Jessamine County	16,760	13,625	12,458	+23.0	+ 9.4
Madison County	43,629	33,482	31,179	+30.3	+ 7.4
Scott County	18,073	15,376	15,141	+17.5	+ 1.6
Woodford County	14,121	11,913	11,212	+18.5	+ 6.3

GENERAL EMPLOYMENT CHARACTERISTICS, 1969 ^{2/}

Major Employment Group	Employment	
	Fayette County	Labor Market Area
TOTAL	92,100	136,900
Agricultural	2,200	10,100
Nonagricultural	89,900	126,900
Manufacturing	17,300	28,100
Trade and Services	27,911	37,921
Government	21,800	30,050

MANUFACTURING EMPLOYMENT TRENDS BY INDUSTRY SEPTEMBER 1959 AND 1969 ^{3/}

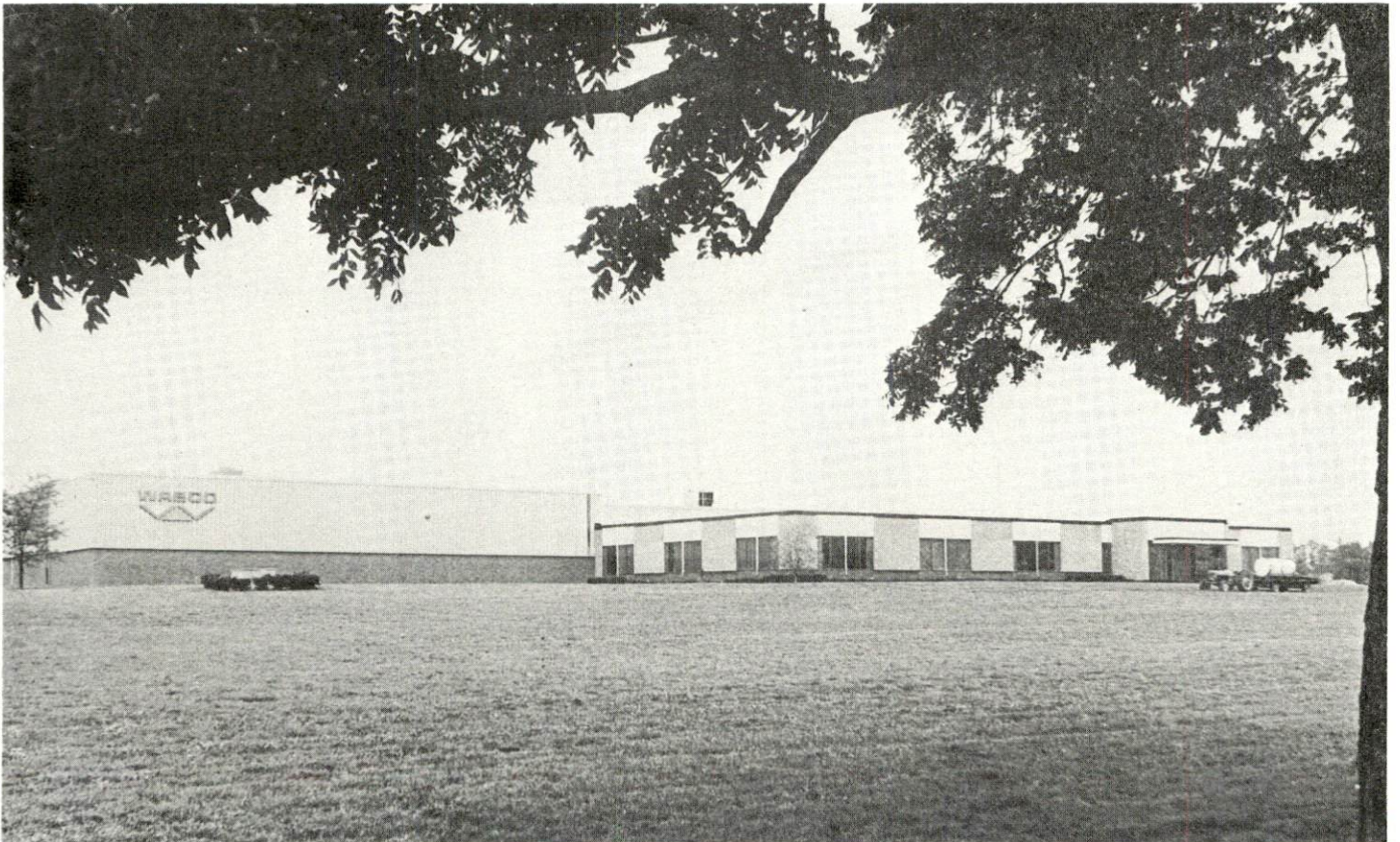
Industry	Fayette County			Labor Market Area		
	1969	1959	%Change	1969	1959	%Change
TOTAL	17,276	9,726	+ 77.6	27,934	15,585	+ 79.2
Food & kindred products	1,190	1,306	- 8.9	2,059	2,395	- 14.0
Tobacco	970	1,319	- 26.5	986	1,365	- 27.8
Apparel, textiles, leather	1,158	435	+ 166.2	2,673	1,478	+ 80.9
Lumber & furniture	142	178	- 20.2	573	442	+ 29.6
Printing, publishing, paper	1,261	660	+ 91.1	2,422	753	+221.6
Chemicals, petroleum, coal, rubber	986	63	+1465.1	1,755	591	+197.0
Stone, clay & glass	413	542	- 23.8	652	618	+ 5.5
Primary metals	46	0	--	766	201	+281.1
Machinery & metal products	10,089	5,118	+ 97.1	13,747	7,454	+ 84.4
Other	1,021	105	+ 872.4	2,301	288	+699.0

MAJOR LEXINGTON MANUFACTURING FIRMS,
THEIR PRODUCTS AND EMPLOYMENT ^{4/}

Firm	Product	Employment		
		Total	Male	Female
American Can Co., Dixie Products	Paper cups, containers, plates	365	185	180
American Technical Machine Corp.	Artificial Christmas wreaths, hair brush curlers, machine parts	450	300	150
Brown & Williamson Tobacco Corp.	Tobacco redrying	361	184	177
General Electric Co.	Sealed beam automotive headlamps	312	92	220
International Business Machines	Electric typewriters, executory dictating equipment	5,825	5,180	645
Irvin Industries, Inc.	Parachutes, auto seat belts, metal parts, vending machines	800	200	600
Lexington Herald-Leader Co.	Newspaper	380	310	70
Lexington Redryers, Inc.	Tobacco stemming, redrying	500	350	150
Parker Seal Co.	Synthetic rubber rings, seals	650	297	353
Pepsi-Cola Bottling Co.	Carbonated beverages	166	156	10
Rainbo Baking Co.	Bread, rolls	178	170	8
R. J. Reynolds Tobacco Co.	Tobacco processing	400	300	100
The Square D Co.	Electrical equipment	1,642	1,059	583
Standard Products Co.	Motor vehicle hardware	290	160	130
Trane Co.	Air conditioning equip- ment, heating equipment, air handling equipment	750	650	100
Visumatic Industrial Products	Electronic equipment, electrical mechanical sub-assembly	150		
V. R. Wesson Division, Fansteel Metallurgical Corp.	Carbide inserts, carbide tip tools, mining tools	247	155	92
Westinghouse Air Brake Co.	Pneumatic valves, pneumatic and hydraulic cylinders	375	292	83



INTERNATIONAL BUSINESS MACHINE CORP.



WESTINGHOUSE AIR BRAKE CO.

WAGE RATES FOR SELECTED OCCUPATIONS
LEXINGTON, KENTUCKY ^{5/}

Classification	Average Hourly Earnings	
	Middle Range	
Clerks, file, Class B	\$1.70	2.00
Key punch operators, Class A	2.50	3.80
Secretaries	2.51	3.54
Stenographers, general	2.04	2.60
Switchboard operators, Class A	2.43	2.80
Typists, Class B	1.84	2.05
Electricians, maintenance	3.56	3.73
Engineers, stationary	3.13	(median)
Machinists, maintenance	3.72	4.45
Mechanics, automotive (maintenance)	2.75	3.13
Mechanics, maintenance	3.10	3.56
Laborers, material handling	2.25	2.49
Packers, shipping	2.16	2.57
Truck drivers	2.19	3.93
Truckers, power (forklift)	2.55	2.76

LABOR ORGANIZATIONS

<u>Union</u>	<u>Representing Workers at:</u>
Tobacco Workers International	Brown & Williamson Tobacco Corp.
Typographical	Keystone Printery, Inc.
	Byron-Page Printing Co.
	The Thoroughbred Press
	Lexington Herald-Leader Co.
	Fritz Printing Co.
Teamsters	Parker Hannifin Co.
	F. W. Means Co.
	Vogue Rattan Manufacturing Co., Inc.
	Westinghouse Air Brake Co.
	Burley Belt Fertilizer Co.
International Brotherhood of Electrical Workers (IBEW)	General Electric Co.
Electrical Workers (IUE)	Square D Co.
Sterotypers, Mailers, Newspaper Guild International Pressman	American Technical Machinery Co.
United Auto Workers	Lexington Herald-Leader Co.
	Parker Hannifin Co.
	Rainbo Baking Co.
	Trane Co.
	Standard Products
	(contd.)

UnionRepresenting Workers at:

United Textile Workers of America
 Sheet Metal Workers
 Bakery and Confectionery Workers
 of America
 International Association of
 Machinists and Aerospace
 Workers (IAM)
 Tool & Die Making

Irvin Industries, Inc.
 Cranfill-Frey Co., Inc.
 Rainbo Baking Co.
 Square D Co.
 Square D Co.

CURRENT AND FUTURE LABOR SUPPLY -
 LEXINGTON LABOR MARKET AREA

<u>County</u>	1970			Future Labor Supply by 1976		
	<u>Current Labor Supply</u> ^{6/}			<u>(Becoming 18 Years of Age)</u> ^{7/}		
	<u>Total</u>	<u>Male</u>	<u>Female</u>	<u>Total</u>	<u>Male</u>	<u>Female</u>
Labor Market Area	6,215	3,075	3,140	25,550	12,942	12,608
Fayette	1,884	1,059	825	14,053	7,123	6,930
Bourbon	537	150	387	1,835	908	927
Clark	791	361	430	2,190	1,132	1,058
Jessamine	497	233	264	1,494	752	742
Madison	1,710	912	798	3,250	1,628	1,622
Scott	583	281	302	1,458	746	712
Woodford	213	79	134	1,270	653	617

TOTAL PERSONAL INCOME ^{8/}

<u>Area</u>	<u>1968</u>	<u>1959</u>	<u>% Change</u>
Fayette County	\$ 616,609,000	\$ 266,617,000	+131.3
Labor Market Area	915,103,000	418,317,000	+118.9
Kentucky	8,516,000,000	4,655,000,000	+ 82.9

PER CAPITA PERSONAL INCOME ^{9/}

<u>Area</u>	<u>1968</u>	<u>1959</u>	<u>% Change</u>
Fayette County	\$3,252	\$1,954	+66.4
Labor Market Area	\$1,858 to 3,252	\$1,155 to 1,954	+60.9 to +66.4
Kentucky	2,654	1,552	+70.4

EDUCATION

Public Schools

Fayette County

Total Enrollment	34,469
Elementary	18,580
Junior High	8,885
Senior High	6,898
Special Education	106
Student-Teacher Ratio	20-1
Elementary	20-1
Junior High	19-1
Senior High	21-1
Special Education	8-1
State Rating of High School	Senior - Comprehensive (3) Comprehensive and Merit (1) Junior - Standard (8) Standard and Merit (1)
Other Accreditations	Southern Association of Colleges and Schools 5 Junior High 4 Senior High 23 Elementary
Percent High School Graduates to College	65.1
Current Expenditures Per Pupil	\$486.88
Bonded Indebtedness, June 30, 1970	\$30,351,000

Private and Parochial Schools

	<u>Private</u>	<u>Parochial</u>
Total Enrollment	791	1,608
Elementary	415	1,205
Junior High	41	
Senior High	245	403
Special Education	90	

(Contd.)

	<u>Private</u>	<u>Parochial</u>
Student-Teacher Ratio	12-1	21-1
Elementary	13-1	25-1
Junior High	8-1	
Senior High	12-1	15-1
Special Education	9-1	
State Rating of High School	Junior - Standard (1)	Senior - Standard (1)
	Senior - Standard (1)	

Vocational Schools

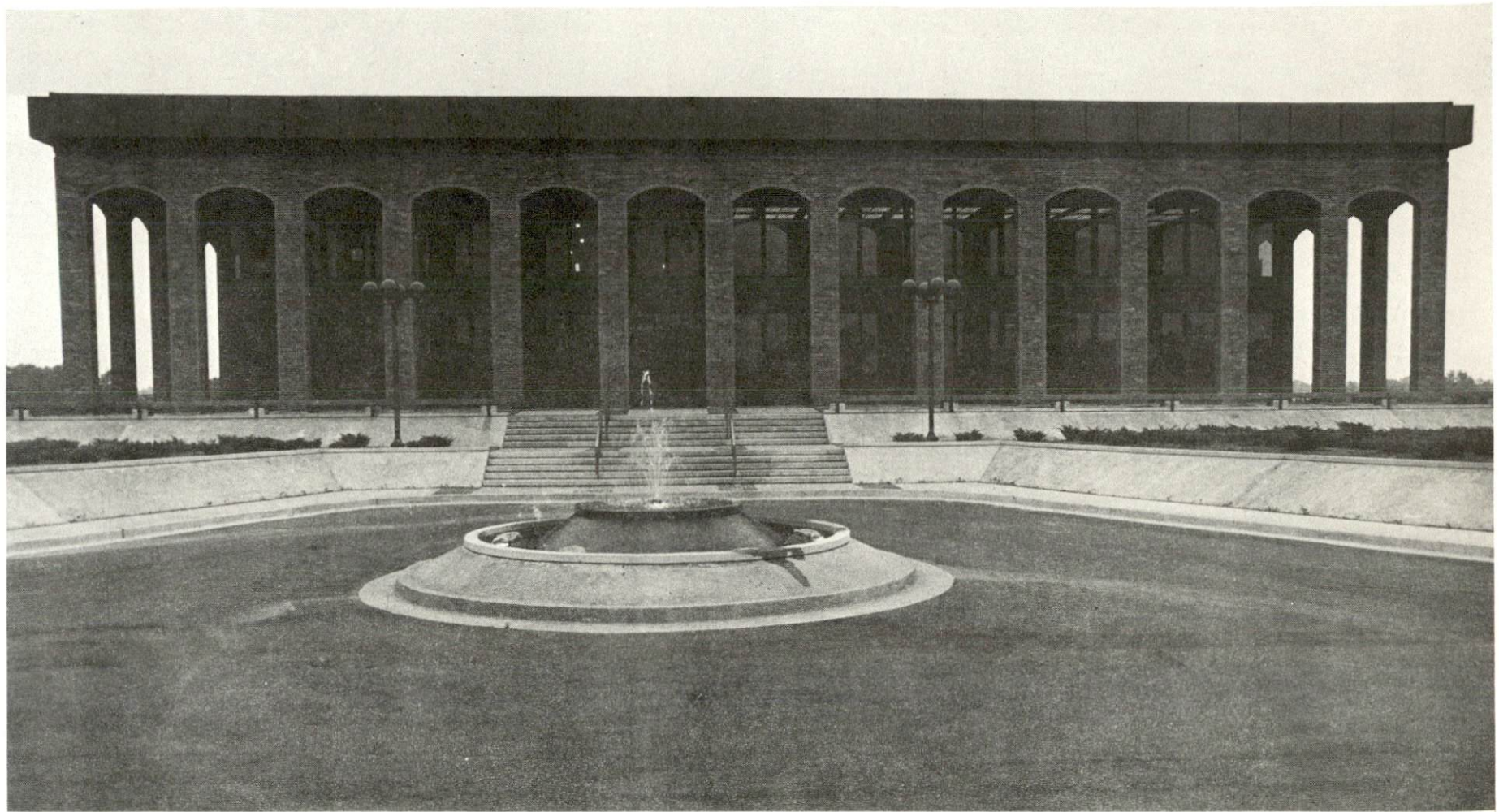
	<u>Nearest Area School</u>	<u>Nearest Extension Center</u>
Location	Lexington	Lexington
Curriculum	Data Processing	Horticulture
	General Clerical	Nurse Aide
	Secretarial-Steno	Appliance Repair
	Practical Nursing	Auto Body Repair
	Distributive Education	Auto Mechanics
	Electronics (Communications)	Carpentry
	Tool & Die Design	Electricity
	Auto Body Repair	Machine Shop
	Auto Mechanics, Printing	Welding
	Commercial Foods	
	Drafting, Electricity	
	Machine Shop, Sheet Metal	
	Office Machine Repair	
	Radio & TV Repair, Welding	

Colleges and Universities

<u>Name</u>	<u>Kentucky Area - Within 50 Miles</u>		<u>Highest Degree Conferred</u>
	<u>Location</u>	<u>Enrollment</u>	
University of Kentucky	Lexington	16, 161	Ph. D. , M. D. , D. M. D. , J. D.
Transylvania University	Lexington	878	Masters
Eastern Kentucky University	Richmond	9, 664	Masters
Kentucky State College	Frankfort	1, 620	Baccalaureate
Georgetown College	Georgetown	1, 445	Masters
Centre College	Danville	749	Baccalaureate
Berea College	Berea	1, 399	Baccalaureate
Asbury College	Wilmore	1, 032	Baccalaureate
Midway Junior College	Midway	212	Associate
Southeastern Christian Junior College	Winchester	210	Associate



SPINDLETOP RESEARCH



COUNCIL OF STATE GOVERNMENTS

TRANSPORTATION

Rail

Lines serving - Louisville & Nashville Railroad Company, Chesapeake and Ohio Railway, and Southern Railway System

Services - Freight, passenger, siding, switching facilities, piggyback service, REA Express pickup and delivery

RAILWAY TRANSIT TIME FROM LEXINGTON, KENTUCKY, TO: 10/

City	No. of Days		City	No. of Days	
	CL			CL	
Atlanta, Ga.	3		Los Angeles, Calif.	5	
Birmingham, Ala.	3		Louisville, Ky.	1	
Chicago, Ill.	3		Nashville, Tenn.	2	
Cincinnati, Ohio	1		New Orleans, La.	3	
Cleveland, Ohio	3		New York, N. Y.	4	
Detroit, Mich.	4		Pittsburgh, Pa.	3	
Knoxville, Tenn.	2		East St. Louis, Ill.	3	

Truck Service

Company

Home Office

Best Way Express, Inc.	Nashville, Tennessee
Bronaugh Motor Express, Inc.	Lexington, Kentucky
Cooper-Jarrett, Inc.	Orange, New Jersey
Dance Freight Lines, Inc.	Lexington, Kentucky
Dixie Ohio Express, Inc.	Akron, Ohio
Eagle Express Company, Inc.	Somerset, Kentucky
Ecklar-Moore Express, Inc.	Lexington, Kentucky
Eldridge Truck Line	Somerset, Kentucky
Elk Valley Freight Line, Inc.	Nashville, Tennessee
Germann Bros. Motor Transportation, Inc. (Interchange only)	Aberdeen, Ohio
Hazard Express	Lexington, Kentucky
McDaniel Motor Express, Inc.	Lexington, Kentucky
McDuffee Motor Freight, Inc. (Ellis Trucking)	Lebanon, Kentucky
McLean Trucking Company	Winston-Salem, North Carolina
Meade Transfer Company	Louisville, Kentucky
Monticello-Albany Freight Line, Inc.	Monticello, Kentucky
Motor Freight Corporation	Terre Haute, Indiana

(Contd.)

CompanyHome Office

Oaks Truck Line	Beattyville, Kentucky
O. K. Trucking Company	Cincinnati, Ohio
O'Nan Transportation Company	Carrollton, Kentucky
Point Express, Inc.	Charleston, West Virginia
Reliance Trucking Company, Inc.	Lexington, Kentucky
Roadway Express, Inc.	Akron, Ohio
Shepherd Truck Line, Inc.	Irvine, Kentucky
Smith's Transfer Corporation of Virginia	Staunton, Virginia
Turner Expediting Service	Louisville, Kentucky
Wilson Freight Company	Cincinnati, Ohio
Youngblood Truck Lines, Inc.	Fletcher, North Carolina

HIGHWAY MILES AND TRUCK TRANSIT TIME IN DAYS FROM
LEXINGTON, KENTUCKY, TO SELECTED MARKET CENTERS

City	Highway Miles	Delivery Time <u>11/</u>		City	Highway Miles	Delivery Time	
		LTL	TL			LTL	TL
Atlanta, Ga.	387	3	2	Los Angeles, Calif.	1,911	6	5
Birmingham, Ala.	410	3	2	Louisville, Ky.	80	overnight	
Chicago, Ill.	374	2	1	Nashville, Tenn.	223	2	1
Cincinnati, Ohio	81	overnight		New Orleans, La.	790	3	2
Cleveland, Ohio	325	2	1	New York, N. Y.	740	3	2
Detroit, Mich.	346	2	1	Pittsburgh, Pa.	365	2	1
Knoxville, Tenn.	193	2	1	St. Louis, Mo.	344	2	1

AirLocal

Location: Blue Grass Field
 4 1/2 miles west of Lexington

Runways: 3 paved

Length: 6,500 feet; 3,500 feet; 3,500 feet

Traffic Control: Tower, guards, approach control, ground control,
 ILS system

Lighting: Approach lighting system, beacon, runways and
 obstruction lighted

Services: 80, 100, and 145 octane; jet fuel; major A & E repairs;
 storage; restaurant; Weather Bureau; flight instruction;
 charter service; taxi; U-Drive-It service; Eastern,
 Delta, Piedmont, Allegheny, and Buckeye (freight)
 Airlines

Bus Southern Greyhound Bus Lines, Lexington Transit Corporation

Taxi 24-hour, radio dispatched service - Fayette Cab Co. - Lexington Yellow Cab Co., Inc. - Red Top Cab Co.

Rental Services Car, truck, and bus rental services

POWER AND FUEL

Electricity

Company serving Lexington - Kentucky Utilities Company
Source of power - Kentucky Utilities Company
Total generating capacity - 773,000 KW
Industrial rates negotiated by - Kentucky Utilities Company, Lexington,
Kentucky 40501

Company serving Fayette County - Bluegrass RECC, Clark RECC
Source of power - East Kentucky Power Cooperative
Total generating capacity - 515,000 KW
Industrial rates negotiated by - Bluegrass RECC, Nicholasville,
Kentucky; Clark RECC, Winchester, Kentucky

Natural Gas

Company serving - Columbia Gas of Kentucky
Source of supply - Kentucky Gas Transmission Corporation
Size of transmission lines - various sizes and pressures
Distribution lines - various sizes and pressures
BTU content - 1,020 - 1,030
Specific gravity - .59 psi

Rates and availability can be obtained from Columbia Gas of Kentucky,
Industrial Sales Department, Post Office Box 241, Lexington,
Kentucky 40501.

WATER AND SEWERAGE

Water

Company serving Lexington - Lexington Water Company

Source - Kentucky River and two reservoirs

Treatment plant capacity - total capacity 38,000,000 gpd (two plants)

Average daily consumption - 30,000,000 gallons

Peak daily consumption - 34,880,000 gallons

Type treatment - copper sulphate for algae control in impounding reservoirs, aeration, coagulation with alum and lime, sedimentation, activated carbon, chlorination, rapid sand filtration

Storage capacity - 9,000,000 gallons

Average pressure - 55 - 70 psi

Average temperature - 36 degrees in winter; 85 degrees in summer

Size mains - 2 to 30 inches

MONTHLY WATER RATES FOR WHOLESALE AND INDUSTRIAL CONSUMERS

The following rates, subject to the minimum charges herein provided, shall apply for water furnished by meter measurement:

First 5,000 cf per month or 15,000 cf per quarter \$.59 per 100 cf
Next 30,000 cf per month or 90,000 cf per quarter .43 per 100 cf
Next 300,000 cf per month or 900,000 cf per quarter .25 per 100 cf
All quantities over 335,000 cf per month or 1,005,000 per quarter
\$.17 per 100 cf.

Minimum Charges:

5/8-inch meter	\$ 1.77 per month or	\$ 5.31 per quarter
3/4-inch meter	2.65 per month or	7.95 per quarter
1-inch meter	4.40 per month or	13.20 per quarter
1 1/2-inch meter	8.85 per month or	26.55 per quarter
2-inch meter	14.15 per month or	42.45 per quarter
3-inch meter	30.60 per month or	91.80 per quarter
4-inch meter	46.70 per month or	140.10 per quarter
6-inch meter	98.30 per month or	294.90 per quarter

Name of Water District - Athens-Boonesboro Water District
 Source of supply of treated water - Lexington Water Company
 Average daily consumption - 667,000 gallons
 Storage capacity - 50,000 gallons
 Average pressure - 60 psi
 Size mains - 4, 6, and 8 inches
 Rates:

First	1,000 gallons	\$4.30 per month
Next	1,000 gallons	2.00 per month
Next	1,000 gallons	1.00 per month
Next	2,000 gallons	1.00 per month
All over	5,000 gallons	.90 per month

Surface water sources - Kentucky River and South Fork of Elkhorn
 Average discharge - Kentucky River about 5,640 cfs at Camp Nelson
 and South Fork of Elkhorn about 30 cfs (USGS)
 Expected ground water yield - Northeast 5 gpm or less, south 50 to 200
 gpm, northwest 50 to 200 gpm and 5 to 50 gpm
 Yield along main streams - 50 to 200 in alluvium of above streams

Sewerage

Company serving - Lexington Sanitary Sewerage System
 Design capacity - (1) 12,000,000 gpd; (2) 1,200,000 gpd; (2 plants)
 Average daily flow - (1) 16,500,000 gallons; (2) 1,600,000 gallons
 Treatment - (1) primary and secondary; (2) secondary
 Type treatment - activated sludge
 Treated effluent discharged into - (1) Town Branch of South Elkhorn;
 (2) West Hickman Creek
 Size of sanitary main - 8 to 64 inches
 Rates - 64 percent of monthly water bill (through 1970)

LOCAL GOVERNMENT

City

Structure - Mayor - 4-year term; 4 commissioners - 2-year terms;
city manager

Budget 1970 - General Fund \$13,847,273; Sewer Fund \$1,686,000

Fees and licenses - Occupational (payroll) - 1 1/2 percent of (1) salaries, wages, commissions earned by every person in the city for work done or services performed or rendered in the city, and (2) the net profits of all businesses, professions or other activities conducted in the city.

County

Structure - County Judge - 4-year term; 3 magistrates - 4-year terms

Budget 1969-70 -General Fund \$2,521,585; Road Fund \$240,015

Assessed Value of Property

<u>Classes of Property*</u>	<u>Lexington (1970)</u>	<u>Fayette County (1969)</u>
Real Estate	\$612,025,980	\$1,064,117,520
Tangibles	129,253,790	485,730,641
Public Service	54,722,640	107,707,250

Local General Property Tax Rates Per \$100 of Assessed Valuation - 1970 ^{12/}

<u>Taxing Unit**</u>	<u>Lexington</u>	<u>Fayette County</u>
State	\$.015	\$.015
County	.161	.161
School	.840	.840
City	.617	
Total	\$1.633	\$1.016

*Property assessed at 100 percent of fair value.

**Manufacturing machinery, raw materials inventories and goods in process inventories are not subject to local tax. State rate is only \$0.15 per \$100.

Planning and Zoning

Agency - Lexington-Fayette County Planning Commission

Plans completed by 1967 - Land Use Plan; Analysis of Soils; Commercial Areas Plan; Downtown Plan; A Plan for Communications; Energy Supply and Waste Disposal Systems; Transportation Plan; Public Land and Buildings Plan; Public Finance Plan; Community Planning Objectives; A Growing Community, summary of the community development plans

In 1968 - Water Resources Study, Zoning Ordinance, Land Subdivision Regulations, Public Property Ordinance, Geographic Units Plan, Street Name and House Number Plan, Plan Exhibition Display, Community Planning Firm, Public Information Map-Plan Summary

In 1970 - Housing Study, Population Study, Historical Areas Plan, Plan Implementation and Citizen Participation Project, Geographic Base File Project

Plans in process - Housing Study, 1970 Population Study, Citizen Participation Project, Davistown-Irishtown Neighborhood Study

Codes adopted - Building Code, Housing Code

Safety

<u>Police</u>	<u>Lexington</u>	<u>Fayette County</u>
Total staff	208 (full-time)	44 (full-time)
Motorized equipment	83	15
Other equipment	standard	standard
<u>Fire</u>		
American Insurance Association Fire Rating	3	
Full-time staff	248	57
Volunteers		21
Equipment:		
1,000 gpm pumpers	11	1 (to be in operation December 1970)
750 gpm pumpers	5	4
500 gpm pumpers		1
utility trucks	22	
command post and light unit	1	
automatic water tower	1	
rescue truck	1	
station wagon with first aid unit	2	3
100-foot aerial ladders	2	
Lexington Water Co. tankers		2
Number of stations	11	3
	22.	

Sanitation

	<u>Lexington</u>	<u>Fayette County</u>
Type service	municipal	private (3 firms)
Cost:		
residential	none	\$5 per month
business	none	charged according to volume and frequency of pickup
Collection frequency:		
residential	twice weekly	twice weekly
business	twice daily	based on firm's schedule*
Trash pickup		once weekly
residential	twice weekly	
business	twice daily	
Disposal method	garbage - incinerator trash - dump	land fill

*Collection in county and city.

HEALTH

Hospitals

General hospitals include:	<u>Beds</u>
Central Baptist Hospital	235
Good Samaritan Hospital	278
St. Joseph Hospital	315
University of Kentucky Medical Center	474
Veterans Administration Hospital	1,171

Special hospitals include:	
Cardinal Hill Convalescent Hospital	50
Eastern State Hospital (State-operated mental institution)	1,125
Shriners Hospital for Crippled Children	64
U. S. National Institute of Mental Health Clinical Research Center (U. S. Public Health Service Narcotics Hospital)	497

Nursing Homes

	<u>Number</u>	<u>Beds</u>
Extended care homes	5	415
Personal care homes	14	498

Day Care Centers

Lexington has 18 state-licensed day care centers with the combined capability of caring for 687 infants and children.

Public Health

Facility - Lexington-Fayette County Health Department

Staff - 1 director (M. D.), 6 division directors, 15 sanitarians, 32 nurses, 5 licensed practical nurses, 2 home health aides, 1 auxiliary worker, 24 stenographers, 1 laboratory technician, 1 X-ray technician, 1 nutritionist, 2 maintenance men, 5 medical clinicians (part-time), 1 dental clinician (part-time), 1 dental hygienist (part-time), 1 public health nurse (part-time), 1 registered nurse (part-time), 1 venereal disease investigator (state employee)

Budget 1969-70 - \$757,460



UNIVERSITY OF KENTUCKY MEDICAL CENTER

OTHER LOCAL FACILITIES

Communications

Telephone - General Telephone Company of Kentucky

Services - direct distance dialing, dial mobile phone service, five dial switching centers, touch tone

Telegraph - Western Union Telegraph Company

Services - office, phone-recorded, errand-messenger, pickup and delivery, Telex exchange

Postal - U.S. Post Office

Class - 1, Part 1

Mail received - 24 hours daily

Mail dispatched - 24 hours daily

Newspapers -

Daily and circulation - Lexington Herald - morning - 54,967

Lexington Leader - evening - 31,584

Other papers received from - Louisville, Kentucky; Cincinnati, Ohio; New York, New York; and other major cities

Radio - WLAP-AM, WVLK-AM and FM, WBLG-AM, WLEX-FM

Stations received from - Louisville, Kentucky; Cincinnati, Ohio

Television - WKYT, WLEX, WBLG

Reception from - Louisville, Kentucky; Cincinnati, Ohio

Kentucky Educational Television - Lexington transmitter, Channel 46

Library Services

Public Library - Lexington Public Library

Size collection, 1968-69 - approximately 94,430 volumes

Circulation, 1968-69 - 393,660

Services - 4 bookmobiles, framed prints, records, well-organized children's program, a large meeting room, 235 current periodicals, 11 current newspapers

Private Libraries - University of Kentucky, Transylvania University

Size collection - University of Kentucky, over 1,300,000 volumes;

Transylvania University, over 75,000 volumes

Special collections - University of Kentucky - particularly strong in regional Ohio Valley and Kentuckiana history, including manuscripts of prominent political figures

Transylvania - early medicine, early law, Kentuckiana history

Services - both libraries are open to the public.

Religious Institutions

Number of churches - over 100

Denominations - Assembly of God, Baptist, Catholic, Christian, Christian Science, Church of Christ, Church of God, Community Church, Eastern Orthodox, Episcopal, Jehovah's Witnesses, Latter Day Saints, Lutheran, Methodist, Nazarene, Presbyterian, Salvation Army, Seventh Day Adventist, Unitarian Universalist

Number of Synagogues - 2

Congregations - Orthodox, Reformed

Financial Institutions

<u>Bank</u>	<u>Statement as of June 30, 1970</u>	
	<u>Assets</u>	<u>Deposits</u>
Bank of Commerce & Trust Co.	\$ 44,753,450.83	\$ 40,986,171.17
Bank of Lexington	9,486,214.92	8,206,343.72
Central Bank & Trust Co.	58,462,773.44	52,408,286.21
Citizens Union National Bank & Trust Co.	65,414,057.31	57,369,409.92
First Security National Bank & Trust Co.	168,398,185.00	147,511,734.00
Second National Bank & Trust Co.	34,843,875.47	31,591,517.54
<u>Savings and Loan Associations</u>	<u>Assets</u>	<u>Shared Accounts</u>
First Federal Savings & Loan Association	\$ 28,291,749.51	\$ 25,286,984.94
Lexington Federal Savings & Loan Association	35,173,560.99	30,932,347.42
New Union Federal Savings & Loan Association	6,537,007.02	5,807,857.15
Peoples Federal Savings & Loan Association	5,047,455.05	4,423,474.64

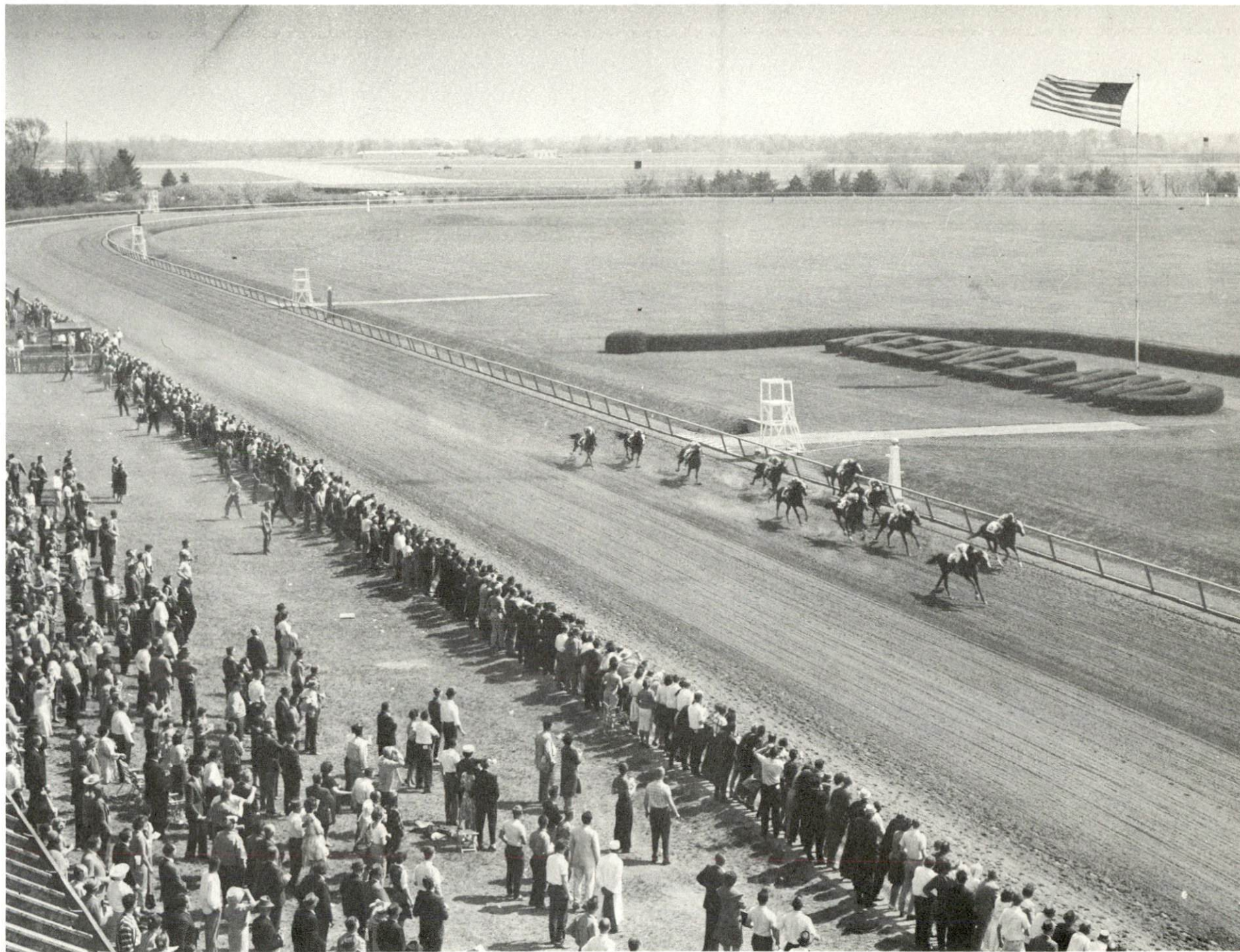
Hotels and Motels

Total number - 29

Units - over 3,000

Clubs and Organizations

There are more than 300 clubs and organizations in Lexington which include all major civic, business, professional, fraternal, charitable, sports, farm, and youth organizations.



KEENELAND RACE COURSE

RECREATION

Local

	<u>Lexington</u>	<u>Fayette County</u>
Public Recreation Facilities		
Supervised program -	yes	yes
Personnel -	28 (full-time); 169 (part-time)	15 (full-time); 250 (part-time)
Parks -	30	3
Playgrounds -	8	5 (schools); 13 (others)
Swimming pools -	3	1
Golf course -	1	
Tennis courts -	22	14
Baseball diamonds -	22	10
Football fields -	2	2
Other -	3 community centers	

Private Recreation Facilities

Country clubs -	6	
Golf courses -	5	
Swimming pools -	6	
Movie theaters -	6 indoor; 4 drive-in	
Bowling lanes -	3	
Other -	tennis courts; Hunt Club; Greater Lexington Aquatic Club	

Tourist Attractions

Blue Grass tours (operating April - October); University of Kentucky; Transylvania University; Ashland - home of the great statesman, Henry Clay; Keeneland Race Course; Big Red Mile Trotting Track; beautiful horse farms; Blue Grass Fair; Shrine Circus; Junior League Horse Show

Cultural Events

Lexington Art League, University of Kentucky Art Gallery, Living Arts and Science Centers, Lexington Children's Theater, Studio Players, University of Kentucky Theater Arts, Transylvania University Theater Arts, La Petite Puppet Theater, Central Kentucky Youth Symphony Orchestra, Lexington Philharmonic Orchestra, Central Kentucky Concert and Lecture Series, The Lexington Singers, University Concert Series, Chamber Music Society, Transylvania University Concerts and Recitals, Music Clubs

Area (Within 50 miles)

Fort Boonesborough State Park
Old Fort Harrod State Park
Natural Bridge State Park
Frankfort, Capital City
Lincoln Homestead State Shrine
Herrington Lake
Daniel Boone National Forest
Blue Licks Battlefield State Park
Kincaid Lake State Park

AGRICULTURE - NATURAL RESOURCES - CLIMATE

Agriculture 13/

	<u>Fayette County</u>	<u>Labor Market Area</u>
Total land area (acres)	179,200	1,240,960
Percent of area in farm land	92.8	89.7
Number of farms	978	7,986
Average size of farms (acres)	170.1	139.4
1964 value of all farm products	\$20,442,302	\$77,350,013
Value per farm	20,902	9,685
Total crop sales	7,892,172	37,974,878
Total livestock & livestock products	12,536,933	39,321,958
1967 agricultural production included:		
Burley tobacco (lbs.)	12,254,000	65,762,000
Corn (bu.)	540,000	3,539,000
Cattle and calves (number)	46,800	282,400
Hogs and pigs (number)	11,200	94,500
Milk production (1966) (lbs.)	11,900,000	54,640,000

Natural Resources

Principal mineral resources	limestone
Other mineral resources	local clays and some vein minerals
Acres of commercial forest land	5,500 acres
Most abundant tree species	red oak, beech, white oak, hickory, black walnut, ash, hard maple

Climate 14/

	<u>Fayette County</u>
Temperature	
Annual mean (30-year record)	55.6 degrees
Average annual, 1969	54.6 degrees
Record highest July 1966 (6-year record)	98.0 degrees
Record lowest January 1966 (6-year record)	-10.0 degrees
Seasonal heating degree-days (30-year record)	4,683
Precipitation	
Mean annual total (30-year record)	44.73 inches
Mean annual snow and sleet (25-year record)	16.00 inches
Total precipitation 1969	39.50 inches
Mean number days precipitation (.01 inch or more) (25-year record)	128
Average number days thunderstorms (25-year record)	47
Prevailing winds (17-year record)	south

HISTORY

Fayette County dates from 1780 when it was part of Fincastle County, Virginia, and later designated Kentucky County, Virginia. When Kentucky became a state in 1792, Fayette County gave up some of its territory to form adjoining counties. The county is named for General Gilbert Montier de La Fayette of France who distinguished himself while fighting with George Washington's Continental Army during the American Revolution.

Lexington, the county seat, was settled in 1779, and by 1815 was the largest town in the state and the social and cultural center of the west. Horse racing became popular very early in Lexington, and shortly after the first horse race course was established in 1789, a thriving breeding and racing industry developed which has grown to world fame.

Transylvania, the first institution of higher learning west of the Allegheny Mountains, was chartered in 1780 and still flourishes as one of the outstanding liberal arts colleges in the nation. Its list of graduates is a "Who's Who" of great men including Jefferson Davis and Stephen Austin.

The University of Kentucky, established in 1865, has grown from its land grant roots to a major center of advanced education and research.

Of the many famous personalities who have lived in Lexington, are Mary Todd Lincoln, and Henry Clay who is remembered in American history as the Great Compromiser. Lexington has also produced 13 U. S. Representatives; 11 U. S. Senators; Vice President of the United States, John C. Breckinridge; Secretary of the Treasury, George M. Bibb; U. S. Attorney General John Breckinridge, Postmaster General William T. Barry, and General John Hunt Morgan.

Today, two of Lexington's most famous citizens are Adolph Rupp, The Baron of Basketball, whose University of Kentucky Wildcats over a period of 36 years have compiled the best win record in the history of the game, and George Swinebroad, autioneer par excellence, who has for many years sold millions of dollars of Thoroughbred horseflesh at Tattersalls and Keeneland, focusing world attention on this local industry.

Lexington with its rich historic and cultural heritage and thriving economy, looks forward to a future that combines the best of all its attributes in a new dimension of growth.

SOURCES OF INFORMATION

- 1/ U. S. Department of Commerce, Bureau of the Census, Census of Population, 1950, 1960, 1970 (Preliminary figures).
- 2/ Kentucky Department of Economic Security, Division of Research and Statistics.
- 3/ Kentucky Department of Economic Security, Number of Workers in Manufacturing Industries Covered by Kentucky Unemployment Insurance Law Classified by Industry and County, September 1959, September 1969.
- 4/ Kentucky Department of Commerce, 1970 Kentucky Directory of Manufacturers.
- 5/ United States Department of Labor, Area Wage Survey, November 1969.
- 6/ Kentucky Department of Economic Security, Kentucky Labor Supply Estimates by County, January 1970.
- 7/ Kentucky Department of Commerce, Future Labor Supply by 1976.
- 8/ University of Kentucky, Office of Development Services and Business Research, Total Personal Income for Kentucky.
- 9/ University of Kentucky, Office of Development Services and Business Research, Per Capita Income in Kentucky.
- 10/ Louisville & Nashville Railroad Company, Louisville, Kentucky.
- 11/ Ecklar-Moore Express, Inc., Lexington, Kentucky.
- 12/ Greater Lexington Area Chamber of Commerce.
- 13/ U. S. Department of Commerce, Bureau of the Census, Census of Agriculture, 1964. U. S. Department of Agriculture and Kentucky Department of Agriculture, Kentucky Agricultural Statistics, 1968.
- 14/ U. S. Department of Commerce, Environmental Science Services Administration, Climatological Data, 1969.

All other information was obtained from governmental offices, local businesses and organizations.