

1971

# Industrial Resources - Franklin County - Frankfort

Kentucky Library Research Collections  
Western Kentucky University, [spcol@wku.edu](mailto:spcol@wku.edu)

Follow this and additional works at: [https://digitalcommons.wku.edu/franklin\\_pty](https://digitalcommons.wku.edu/franklin_pty)



Part of the [Business Administration, Management, and Operations Commons](#), [Growth and Development Commons](#), and the [Infrastructure Commons](#)

---

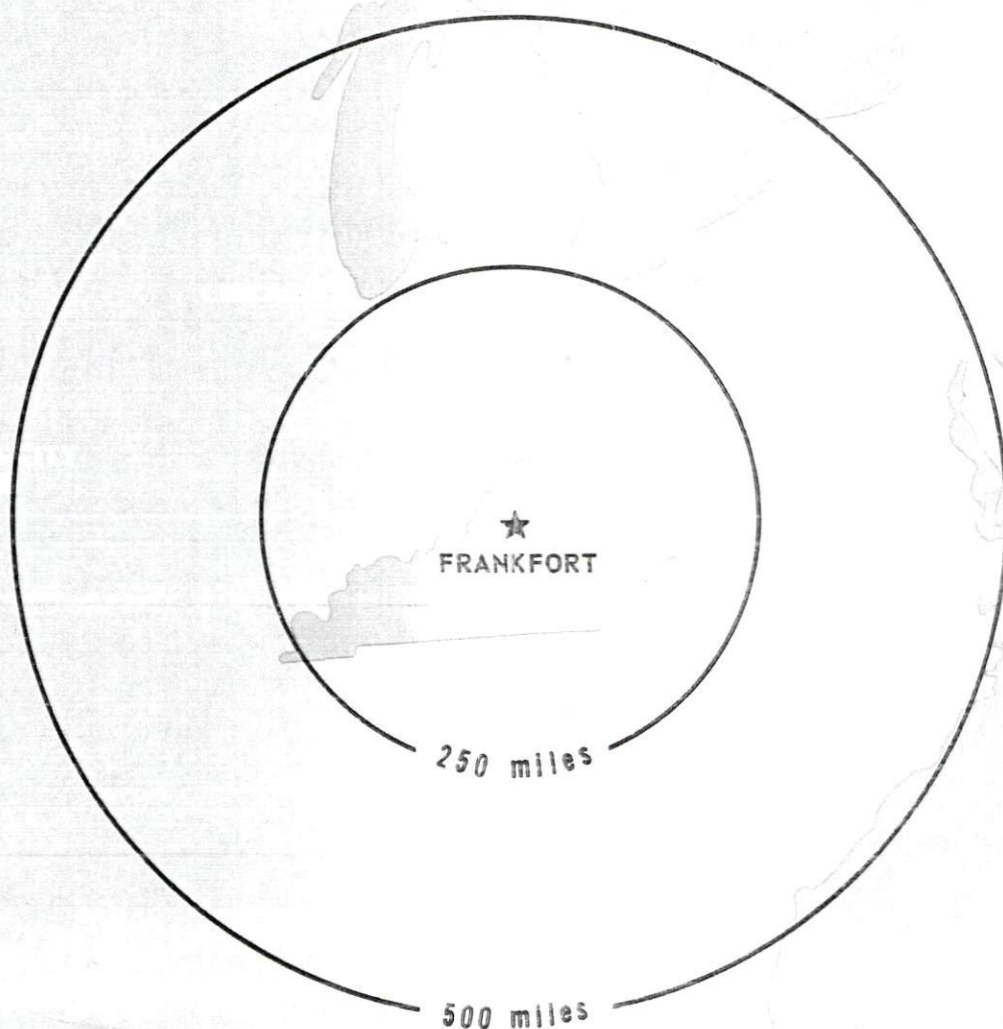
## Recommended Citation

Kentucky Library Research Collections, "Industrial Resources - Franklin County - Frankfort" (1971). *Franklin County*. Paper 13.  
[https://digitalcommons.wku.edu/franklin\\_pty/13](https://digitalcommons.wku.edu/franklin_pty/13)

This Report is brought to you for free and open access by TopSCHOLAR®. It has been accepted for inclusion in Franklin County by an authorized administrator of TopSCHOLAR®. For more information, please contact [topscholar@wku.edu](mailto:topscholar@wku.edu).

# INDUSTRIAL RESOURCES

## **FRANKFORT KENTUCKY**



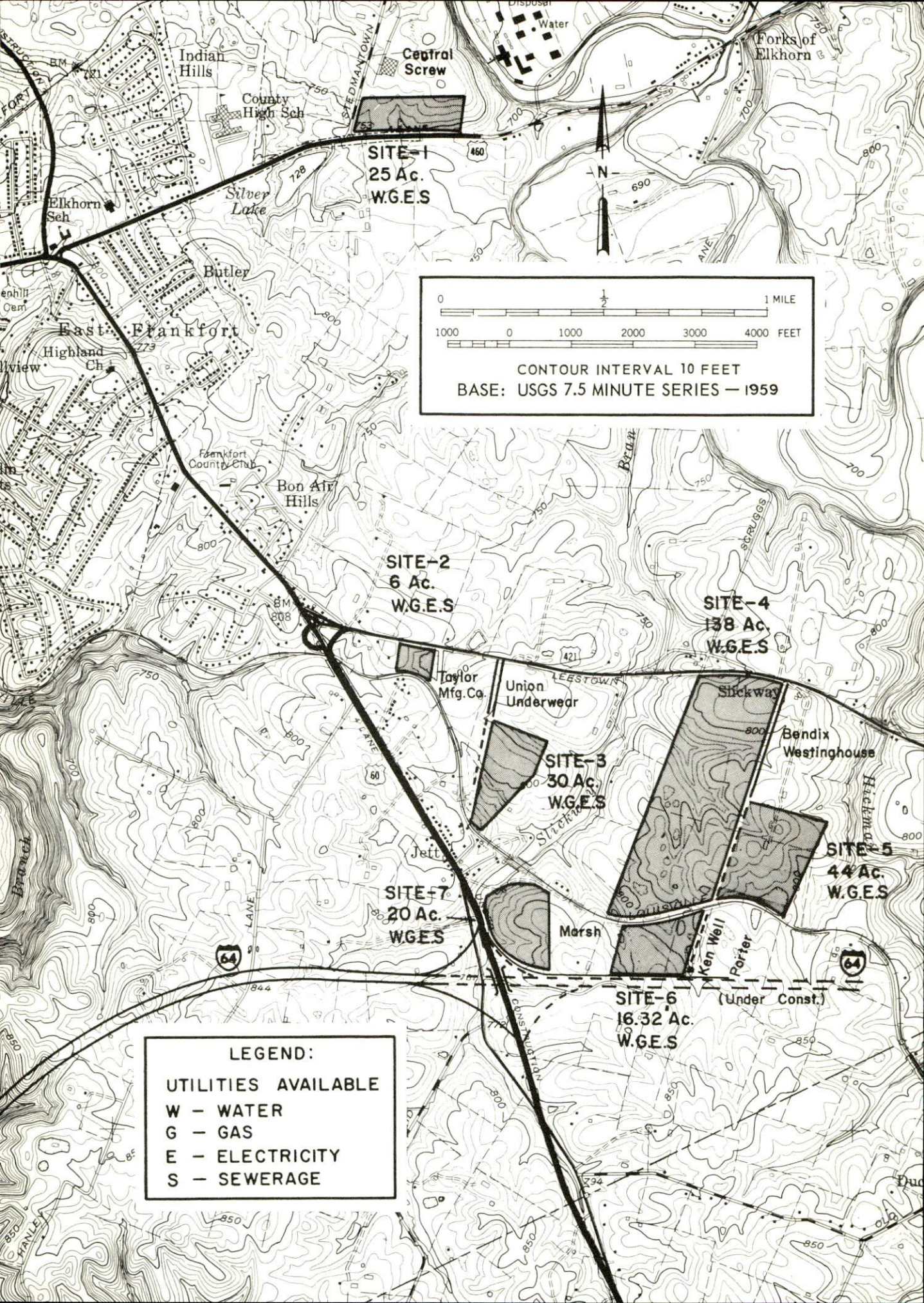
FRANKFORT INDUSTRIAL SITES

1971

# FRANKFORT INDUSTRIAL SITES

- SITE #1: ACREAGE AND TOPOGRAPHY: 25 acres, level to gently rolling  
 LOCATION: 1 mile east of city limits  
 ZONING: Industrial  
 HIGHWAY ACCESS: Fronts on U.S. 460 and industrial access road  
 RAILROADS: Frankfort & Cincinnati Railroad  
 WATER: Frankfort Electric & Water Plant Board  
 SIZE LINE: 8-inch line adjacent to site  
 GAS: Columbia Gas of Kentucky  
 SIZE LINE: 4-inch main adjacent to site  
 ELECTRICITY: Frankfort Electric & Water Plant Board  
 SEWERAGE: Frankfort Sewer Board; 8-inch line adjacent to site  
 OWNERSHIP: Private
- SITE #2: ACREAGE AND TOPOGRAPHY: 6 acres, level  
 LOCATION: Approximately one-half mile southeast of city limits  
 ZONING: Commercial  
 HIGHWAY ACCESS: Fronts on U.S. 421  
 RAILROADS: Louisville & Nashville Railroad borders on south.  
 WATER: Frankfort Electric & Water Plant Board  
 SIZE LINE: 16-inch line on site  
 GAS: Columbia Gas of Kentucky  
 SIZE OF LINE: 8-inch main on site  
 ELECTRICITY: Frankfort Electric & Water Plant Board  
 SEWERAGE: Frankfort Sewer Board; 15-inch line on site  
 OWNERSHIP: Louisville & Nashville Railroad
- SITE #3: ACREAGE AND TOPOGRAPHY: 30 acres, gently rolling  
 LOCATION: One-half mile southeast of city limits  
 ZONING: Commercial  
 HIGHWAY ACCESS: U.S. 421 via unpaved access road  
 RAILROADS: Louisville & Nashville Railroad borders site.  
 WATER: Frankfort Electric & Water Plant Board  
 SIZE LINE: 16-inch line adjacent to site  
 GAS: Columbia Gas of Kentucky  
 SIZE LINE: 8-inch main adjacent to site  
 ELECTRICITY: Frankfort Electric & Water Plant Board  
 SEWERAGE: Frankfort Sewer Board; 15-inch line on site  
 OWNERSHIP: Louisville & Nashville Railroad
- SITE #4: ACREAGE AND TOPOGRAPHY: 138 acres, gently rolling  
 LOCATION: 1 mile southeast of city limits  
 ZONING: Commercial  
 HIGHWAY ACCESS: Fronts on U.S. 421; access road, partly paved  
 RAILROADS: Louisville & Nashville Railroad borders site on south.  
 WATER: Frankfort Electric & Water Plant Board  
 SIZE LINE: 12-inch line adjacent to site  
 GAS: Columbia Gas of Kentucky  
 SIZE LINE: 8-inch main adjacent to site  
 ELECTRICITY: Frankfort Electric & Water Plant Board  
 SEWERAGE: Frankfort Sewer Board; 8-inch line through site  
 OWNERSHIP: Louisville & Nashville Railroad
- SITE #5: ACREAGE AND TOPOGRAPHY: 44 acres, gently rolling  
 LOCATION: 1 mile southeast of city limits  
 ZONING: Industrial  
 HIGHWAY ACCESS: Unpaved access road to U.S. 421  
 RAILROADS: Louisville & Nashville Railroad borders site on south.  
 WATER: Frankfort Electric & Water Plant Board  
 SIZE LINE: 12-inch line adjacent to site  
 GAS: Columbia Gas of Kentucky  
 SIZE LINE: 8-inch main adjacent to site  
 ELECTRICITY: Frankfort Electric & Water Plant Board  
 SEWERAGE: Frankfort Sewer Board; 8-inch line adjacent to site  
 OWNERSHIP: Private
- SITE #6: ACREAGE AND TOPOGRAPHY: 16.32 acres, level to gently rolling  
 LOCATION: One-half mile southeast of city limits  
 ZONING: Industrial  
 HIGHWAY ACCESS: U.S. 60 via industrial access road  
 RAILROADS: Louisville & Nashville Railroad borders site on north.  
 WATER: Frankfort Electric & Water Plant Board  
 SIZE LINE: 12-inch line on site  
 GAS: Columbia Gas of Kentucky  
 SIZE LINE: 6-inch main on site  
 ELECTRICITY: Frankfort Electric & Water Plant Board  
 SEWERAGE: Frankfort Sewer Board; 15-inch line on site  
 OWNERSHIP: Franklin County Industrial Foundation
- SITE #7: ACREAGE AND TOPOGRAPHY: 20 acres, gently sloping  
 LOCATION: 1 1/2 miles southeast of city limits  
 ZONING: Industrial  
 HIGHWAY ACCESS: U.S. 60 and industrial access road  
 RAILROADS: Louisville & Nashville Railroad on northeast border  
 WATER: Frankfort Electric & Water Plant Board  
 SIZE LINE: 12-inch line on site  
 GAS: Columbia Gas of Kentucky  
 SIZE LINE: 6-inch main on site  
 ELECTRICITY: Frankfort Electric & Water Plant Board  
 SEWERAGE: Frankfort Sewer Board; 15-inch line on site  
 OWNERSHIP: Franklin County Industrial Foundation







For additional information concerning the industrial sites, contact the Frankfort - Franklin County Chamber of Commerce, Capital Avenue, Frankfort, Kentucky, or the Kentucky Department of Commerce, Washington and Wapping Streets, Frankfort, Kentucky 40601.

INDUSTRIAL RESOURCES

FRANKFORT, KENTUCKY

Prepared by

The Kentucky Department of Commerce

in cooperation with

The Frankfort-Franklin County Chamber of Commerce

1971

This copy has been prepared by the Kentucky Department of Commerce,  
Division of Research and Planning, and the cost of printing paid from  
state funds.

# TABLE OF CONTENTS

<u>Chapter</u>	<u>Page</u>
INDUSTRIAL SITES . . . . .	i
FRANKFORT, KENTUCKY - A RESOURCE PROFILE . . . . .	1
THE LABOR MARKET . . . . .	4
Population Trends . . . . .	4
General Employment Characteristics, 1969 . . . . .	4
Manufacturing Employment Trends by Industry . . . . .	4
Major Frankfort Manufacturing Firms, Their Products and Employment . . . . .	5
Wage Rates for Selected Occupations . . . . .	7
Labor Organizations . . . . .	7
Current and Future Labor Supply . . . . .	8
Total Personal Income . . . . .	8
Per Capita Personal Income . . . . .	8
EDUCATION . . . . .	9
Public Schools . . . . .	9
Parochial and Private Schools . . . . .	9
Vocational Schools . . . . .	10
Colleges and Universities . . . . .	10
TRANSPORTATION . . . . .	13
Rail . . . . .	13
Truck Service . . . . .	13
Air . . . . .	14
Bus . . . . .	15
Taxi . . . . .	15
Rental Services . . . . .	15
POWER AND FUEL . . . . .	16
Electricity . . . . .	16
Natural Gas . . . . .	16
WATER AND SEWERAGE . . . . .	17
Water . . . . .	17
Sewerage . . . . .	18



<u>Chapter</u>	<u>Page</u>
LOCAL GOVERNMENT . . . . .	19
City . . . . .	19
County . . . . .	19
Assessed Value of Property, 1969 . . . . .	19
Local General Property Tax Rates Per \$100 of Assessed Valuation, 1970 . . . . .	19
Planning and Zoning . . . . .	21
Safety . . . . .	21
Police . . . . .	21
Fire . . . . .	21
Sanitation . . . . .	21
HEALTH . . . . .	22
Hospitals . . . . .	22
Nursing Homes . . . . .	22
Public Health . . . . .	22
OTHER LOCAL FACILITIES . . . . .	23
Communications . . . . .	23
Library Services . . . . .	23
Religious Institutions . . . . .	24
Financial Institutions . . . . .	24
Hotels and Motels . . . . .	24
Clubs and Organizations . . . . .	24
RECREATION . . . . .	27
Local . . . . .	27
Area . . . . .	27
AGRICULTURE - NATURAL RESOURCES - CLIMATE . . . . .	28
Agriculture . . . . .	28
Natural Resources . . . . .	28
Climate . . . . .	28
HISTORY . . . . .	29



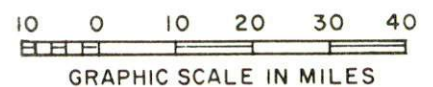
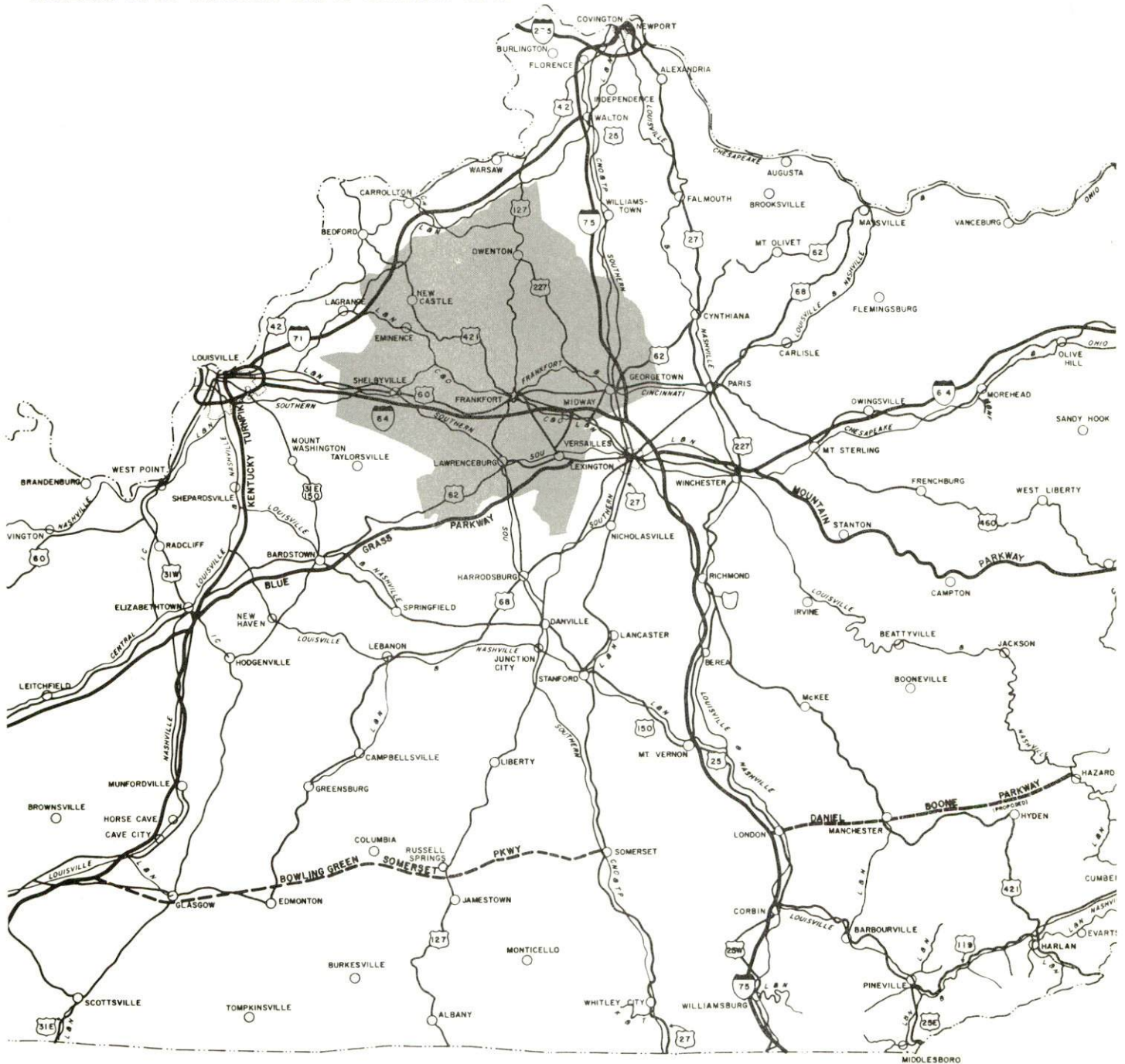


KENTUCKY STATE CAPITOL - FRANKFORT, KENTUCKY



# FRANKFORT LABOR MARKET AREA

\*Shaded area denotes labor market area



## FRANKFORT, KENTUCKY - A RESOURCE PROFILE

### Location

Frankfort, the county seat of Franklin County, is located in the heart of the Blue Grass Region in the central part of Kentucky. The Kentucky River bisects this beautiful and historic capital city. Frankfort is served by Interstate 64, U.S. 60, and is 15 miles from Interstate 75. It is 49 miles from Louisville, Kentucky, 25 miles from Lexington, Kentucky, and 89 miles from Cincinnati, Ohio. The 1970 population of Frankfort is 20,054, and Franklin County has a population of 32,949.

### The Economic Framework

Total employment in Franklin County averaged 21,000 in 1969 with manufacturing providing 3,200 of these jobs. Government provided 10,900 jobs. During the first nine years of the decade, manufacturing employment increased by 43.8 percent. The county's major products are distilled beverages, apparel, and metal products.

Per capita personal income in the county in 1968 was \$2,808, or \$163 above the Kentucky average.

In the Franklin County labor market area, which includes Franklin and its six surrounding counties, total employment in 1969 averaged 49,100. Manufacturing provided 9,335 jobs while government provided 13,840. Area industrial employment is heaviest in machinery and metal products, distilled beverages and apparel.

Despite important industrial gains in recent years, the area still has a deficit of 1,662 manufacturing jobs when measured against the national industrial employment-population ratio.

### Resources For Growth

1. There is a current estimated labor supply of 1,660 men and 1,420 women available for industrial jobs in the labor market area. In addition, 5,010 young men and 4,920 young women will have become 18 years of age by 1976 and potentially available for work.

2. The transportation capability is good. Frankfort is served by U.S. Highways 60, 421, 460, and 127. Interstate 64 passes within 1 mile of Frankfort, Interstate 75 is 15 miles distant, and the Blue Grass Parkway is 10 miles distant. Two rail lines serve Frankfort. Commercial air service is 20 minutes away. Unloading facilities for sand and gravel are available on the Kentucky River where 6-foot navigation is maintained.



3. Natural gas service is furnished by Columbia Gas of Kentucky; electricity is furnished by the Kentucky Utilities Company. The raw water supply from the Kentucky River is more than adequate for future growth.

4. Industrial sites - Frankfort has seven available industrial sites with all utilities.

5. Education - Franklin County residents enjoy proximity to ten senior colleges and universities and three junior colleges which are located within a 50-mile radius of Frankfort.

Kentucky State College, a coeducational four-year institution located in Frankfort, was founded in 1886. The college offers curricula in three areas: (1) four-year liberal arts program, (2) two-year community college program, and (3) late afternoon-evening program.

There is an area vocational school in Lexington, 28 miles away, and a vocational center is located in Frankfort.

#### Community Programs For Improvement

In recent years the citizens of Frankfort have continued to seek ways in which to make their community more attractive and to provide more modern facilities.

Recent improvements are:

1. 32-unit addition to Leestown Terrace Housing Project is under construction.
2. Improvements to Liberty Hall and Vest-Lindsey historic homes.
3. Construction of North Frankfort flood wall.
4. Two new elementary schools.
5. A new faculty apartment complex at Kentucky State College.
6. Capital Day School recently constructed in West Frankfort.
7. Tourist camp grounds opened on the Forks of Elkhorn.
8. Franklin County Vocational School completed in 1969.
9. Historic Fort Hill, 124-acre tract, purchased for tourist attraction and recreational facilities.
10. Capital City Airport, 1,000-foot runway extension.
11. Two new motels.
12. 28-acre site for recreation park purchased.
13. A junior size Olympic pool and playground area are under construction.
14. 3 new branch banks have opened, east end and west end.
15. Capital Plaza Complex under construction - 28-story State Office Building, Y. M. C. A., Civic Center and Federal Building.
16. Ambulance service, privately-owned - 2 ambulances.



17. Two ambulances for the fire department.
18. Two shopping centers.
19. Several new churches have been constructed.
20. Construction of a new modern animal shelter.
21. Air conditioning installed in public library.
22. A playground and athletic field is under construction for east Frankfort.
23. An addition to Franklin County Courthouse.
24. A new multi-story bank building in downtown Frankfort under construction.
25. 50-bed expansion to nursing home.
26. 124 apartments for elderly under construction.
27. An Industrial Arts Building for Kentucky State College to be completed in 1971.
28. Additional 9-holes added to Whippoorwill Spring Golf Course.
29. 485 acres purchased for recreational park.
30. An addition to Juniper Hill Clubhouse.
31. 90 acres opened for subdivision.
32. 100-units low-rent housing under construction.
33. New mobile home park.

Planned:

1. A fire station in North Frankfort.
2. A fire station and training facility in West Frankfort.
3. Major expansion of King's Daughters' Hospital.
4. Two new junior high schools (county).
5. One new elementary school (county).
6. New filtration plant for water works.

Recreation, Entertainment, and Livability

The Frankfort Recreation Department has a full-time director and an assistant director. Its well-rounded program makes it one of the most outstanding in Kentucky. Frankfort, located on the Kentucky River, offers boating, skiing, swimming, and fishing. Juniper Hill Municipal Park has an 18-hole golf course, Olympic-size swimming pool, tennis courts, picnic areas, clubhouse and a baseball diamond. The Frankfort Country Club, under private ownership, has one 18-hole golf course, swimming pool, tennis courts and clubhouse. The Whippoorwill Spring Golf Course has added an additional 9 holes. The Frankfort Arts Foundation sponsors the concert series and Kentucky State College offers lectures, concerts and art exhibits. Frankfort also has a "Golden Age" program for the elderly.

Lexington, 25 miles distant, and Louisville, Kentucky, 49 miles distant, offer the full spectrum of sophisticated entertainment, cultural and sporting events.

# THE LABOR MARKET

## POPULATION TRENDS <sup>1/</sup>

<u>Area</u>	<u>Population</u>			<u>Percent Change</u>	
	<u>1970</u>	<u>1960</u>	<u>1950</u>	<u>1960-70</u>	<u>1950-60</u>
Frankfort	20,054	18,365	11,916	+ 9.2	+54.1
Labor Market Area	111,084	103,045	100,332	+ 7.8	+ 2.7
Franklin County	32,949	29,421	25,933	+12.0	+13.5
Anderson County	9,231	8,618	8,984	+ 7.1	- 4.1
Henry County	10,593	10,987	11,395	- 3.6	- 3.6
Owen County	7,248	8,237	9,755	-12.0	-15.6
Scott County	18,073	15,376	15,141	+17.5	+ 1.6
Shelby County	18,869	18,493	17,912	+ 2.0	+ 3.2
Woodford County	14,121	11,913	11,212	+18.5	+ 6.3

## GENERAL EMPLOYMENT CHARACTERISTICS, 1969 <sup>2/</sup>

<u>Major Employment Group</u>	<u>Franklin County</u>	<u>Labor Market Area</u>
TOTAL	21,000	49,100
Agricultural	700	8,000
Nonagricultural	20,300	41,100
Manufacturing	3,200	9,335
Trade and Services	3,583	8,554
Government	10,900	13,839

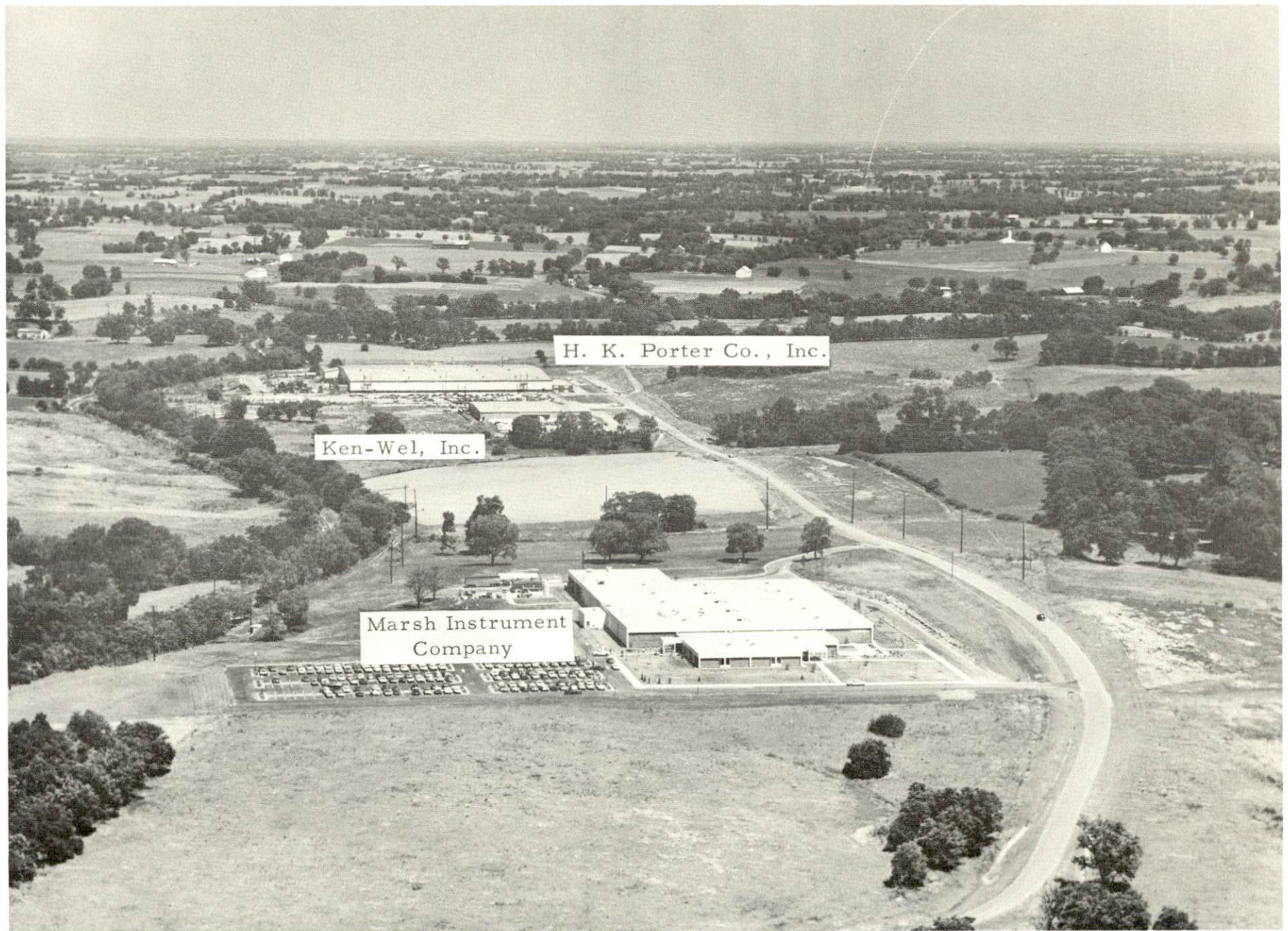
## MANUFACTURING EMPLOYMENT TRENDS BY INDUSTRY SEPTEMBER 1959 AND 1969 <sup>3/</sup>

<u>Industry</u>	<u>Franklin County</u>			<u>Labor Market Area</u>		
	<u>1969</u>	<u>1959</u>	<u>%Change</u>	<u>1969</u>	<u>1959</u>	<u>%Change</u>
TOTAL	3,199	2,225	+ 43.8	9,636	5,566	+ 73.1
Food & kindred products	662	1,050	- 37.0	1,745	2,507	- 30.4
Tobacco	2	2	0	24	30	- 20.0
Apparel, textiles, leather	1,024	785	+ 30.4	1,556	1,040	+ 49.6
Printing, publishing, paper	80	51	+ 56.9	1,198	103	+1063.1
Chemicals, petroleum, coal, rubber	11	0	-	122	26	+ 369.2
Stone, clay & glass	21	32	- 34.4	252	91	+ 176.9
Primary metals	0	0	0	288	0	-
Machinery & metal products	886	305	+190.5	2,744	1,430	+ 91.9
Other	513	0	-	1,707	339	+ 403.5

MAJOR FRANKFORT MANUFACTURING FIRMS,  
THEIR PRODUCTS AND EMPLOYMENT <sup>4/</sup>

Firm	Product	Employment		
		Total	Male	Female
Bendix-Westinghouse Automotive Air Brake Co.	Air brakes system	100		
Central Screw Co.	Screws, bolts, nuts	172	153	19
Frankfort Publishing Co.	Newspaper	45	34	11
Genesco, Inc.	Ladies' dress shoes	280	90	190
Ken-Wel, Inc.	Ignition transformers, hydraulic pumps, valves	106	26	80
Marsh Instrument Co.	Pressure gauges, valves, thermometers	260	65	195
National Distillers Products Co.	Whisky, feed	810	532	278
H. K. Porter Co., Inc.	Automotive appliance trim	439	239	200
The George T. Staggs Co.	Whisky, distillers dried grain	382	273	109
Frank F. Taylor Co.	Strollers, playpens, highchairs	217	143	74
21 Brands Distillers Corp.	Whisky	153	100	53
Union Underwear Co., Inc.	Men's underwear	767	82	685





AERIAL VIEW OF INDUSTRIAL PARK

WAGE RATES FOR SELECTED OCCUPATIONS  
FRANKFORT, KENTUCKY 5/

<u>Classification</u>	<u>Wages Per Hour</u>		
	<u>Starting</u>	<u>Maximum</u>	<u>Prevailing</u>
<u>Production Employees</u>			
Assembler	\$1.80	\$2.25	NA
Inspector	2.00	2.50	\$2.00
Production Laborer	2.00	2.25	NA
Welder, Arc or Acetylene (Class-A)	3.75	3.95	3.75
<u>Service Employees</u>			
Electrician (Class-A)	\$3.00	\$5.35	\$4.00
Laborer	1.60	3.75	2.50
Machinist	2.00	3.80	NA
Mechanic, Maintenance	3.42	3.85	NA
Truck Driver, Industrial (Class-A)	1.60	3.50	NA
<u>Office Employees</u>			
Bookkeeper	\$ 70 wk.	\$105 wk.	\$ 90 wk.
Receptionist	280 mo.	325 mo.	300 mo.
Secretary	300 mo.	425 mo.	375 mo.
Typist	285 mo.	375 mo.	315 mo.

LABOR ORGANIZATIONS

<u>Union</u>	<u>Representing Workers at:</u>
Allied Industrial Workers	Ken-Wel, Inc; H. K. Porter Co., Inc.; Bendix-Westinghouse Automotive Air Brake Company; Marsh Instrument Co.
International Association of Machinists	Frank F. Taylor Co.; Central Screw Co.
Distillery, Rectifying, Wine and Allied Workers International Union of America	All distilleries



CURRENT AND FUTURE LABOR SUPPLY -  
FRANKFORT LABOR MARKET AREA

<u>County</u>	1970 Current Labor Supply <sup>6/</sup>			Future Labor Supply by 1976 <sup>7/</sup> (Becoming 18 Years of Age)		
	<u>Total</u>	<u>Male</u>	<u>Female</u>	<u>Total</u>	<u>Male</u>	<u>Female</u>
Labor Market Area	3,076	1,658	1,418	9,931	5,013	4,918
Franklin	605	410	195	2,734	1,377	1,357
Anderson	478	235	243	837	432	405
Henry	380	193	187	972	492	480
Owen	469	275	194	776	381	395
Scott	583	281	302	1,458	746	712
Shelby	348	185	163	1,884	932	952
Woodford	213	79	134	1,270	653	617

TOTAL PERSONAL INCOME <sup>8/</sup>

<u>Area</u>	<u>1968</u>	<u>1959</u>	<u>% Change</u>
Franklin County	\$ 103,461,000	\$ 55,599,000	+86.0
Labor Market Area	286,092,000	161,815,000	+76.8
Kentucky	8,516,000,000	4,655,000,000	+82.9

PER CAPITA PERSONAL INCOME <sup>9/</sup>

<u>Area</u>	<u>1968</u>	<u>1959</u>	<u>% Change</u>
Franklin County	\$2,808	\$1,845	+52.2
Labor Market Area	\$2,074 to 3,112	\$1,514 to 1,845	+37.0 to +68.7
Kentucky	2,645	1,552	+70.4

## EDUCATION

### Public Schools

	<u>Frankfort Independent</u>	<u>Franklin County</u>
Total Enrollment	1, 160	5, 791
Elementary	733	4, 134
High School	427	1, 657
Student-Teacher Ratio	19-1	21-1
Elementary	22-1	22-1
High School	17-1	21-1
State Rating of High School	Basic	Comprehensive, Merit
Other Accreditations	Southern Assoc- iation of Colleges & Schools	Southern Assoc- iation of Colleges & Schools
Percent High School Graduates to College	52.6	59.7
Current Expenditures Per Pupil	\$482.00	\$427.16
Bonded Indebtedness, June 30, 1970	\$160, 622.50	\$2, 040, 000

### Parochial and Private Schools

	<u>Private</u>	<u>Parochial</u>
Total Enrollment	144	242
Elementary	144	242
Student-Teacher Ratio	10-1	17-1
Elementary	10-1	17-1

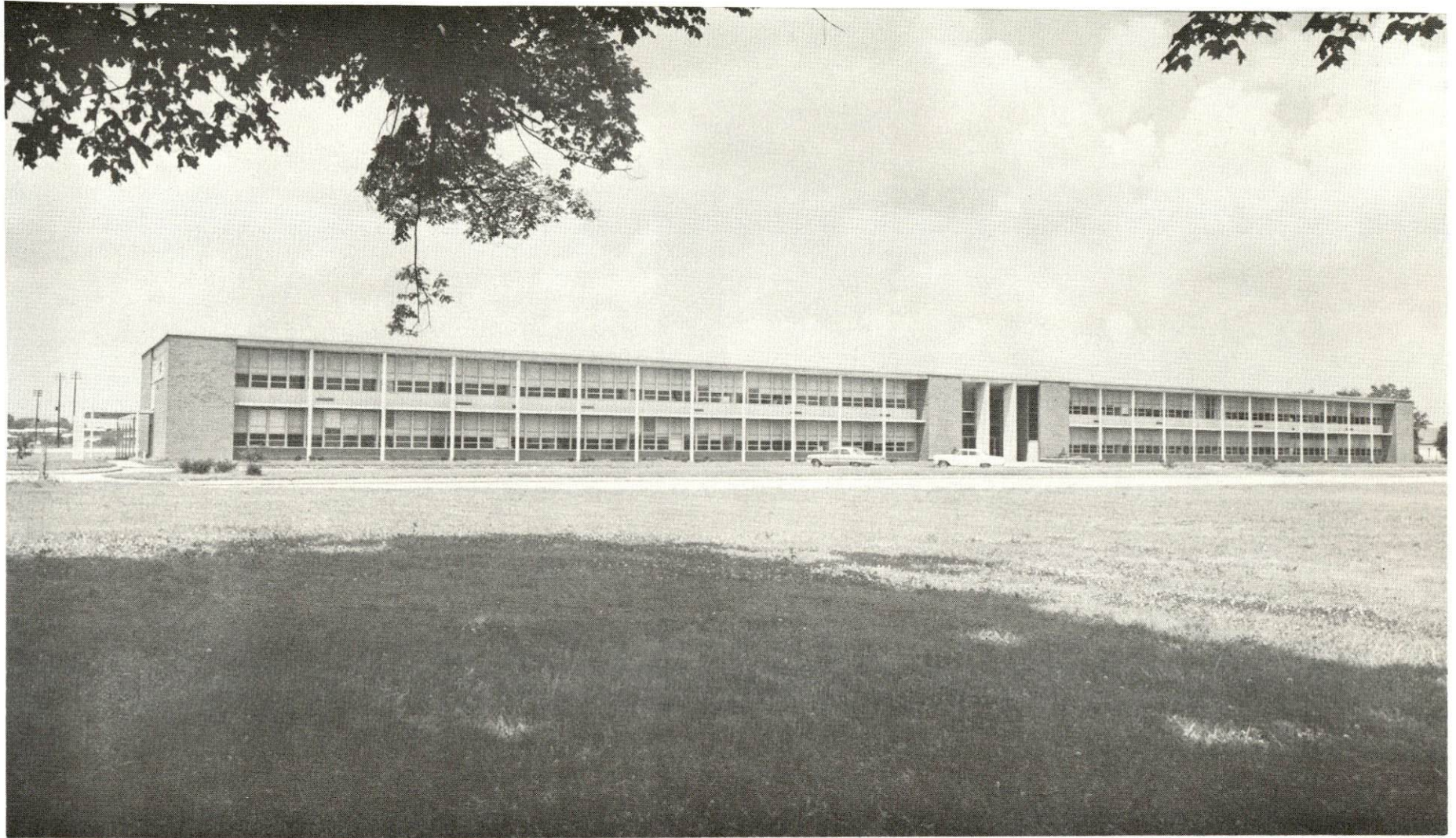
## Vocational Schools

	<u>Nearest Area School</u>	<u>Nearest Extension Center</u>
Location	Lexington	Frankfort
Miles Distant	25 miles	
Curriculum	Accounting Jr. Mgmt. Data Processing General Clerical Secretarial-Steno Practical Nursing Electronics (Communications) Tool & Die Design Auto Body Repair Auto Mechanics Commercial Foods Drafting, Electricity Machine Shop Office Machine Repair Printing Radio & TV Repair Sheet Metal, Welding	Auto Body Repair Auto Mechanics Drafting, Welding Electricity-Electronics Machine Shop

## Colleges and Universities

<u>Name</u>	<u>Area - Within 50 miles</u>		<u>Highest Degree Conferred</u>
	<u>Location</u>	<u>Enrollment</u>	
Kentucky State College	Frankfort	1,620	Baccalaureate
Midway Junior College	Midway	212	Associate
Georgetown College	Georgetown	1,445	Masters
University of Kentucky	Lexington	16,161	Ph.D., M.D., D.M.D., J.D.
Transylvania University	Lexington	878	Masters
Asbury College	Wilmore	1,032	Baccalaureate
Centre College	Danville	749	Baccalaureate
Southeastern Christian College	Winchester	450	Associate
Bellarmino-Ursuline College	Louisville	1,876	Baccalaureate
University of Louisville	Louisville	9,057	Ph.D., M.D., D.M.D., J.D.
Eastern Kentucky University	Richmond	9,664	Masters
Jefferson Community College	Louisville	2,557	Associate
Spalding College	Louisville	1,267	Baccalaureate

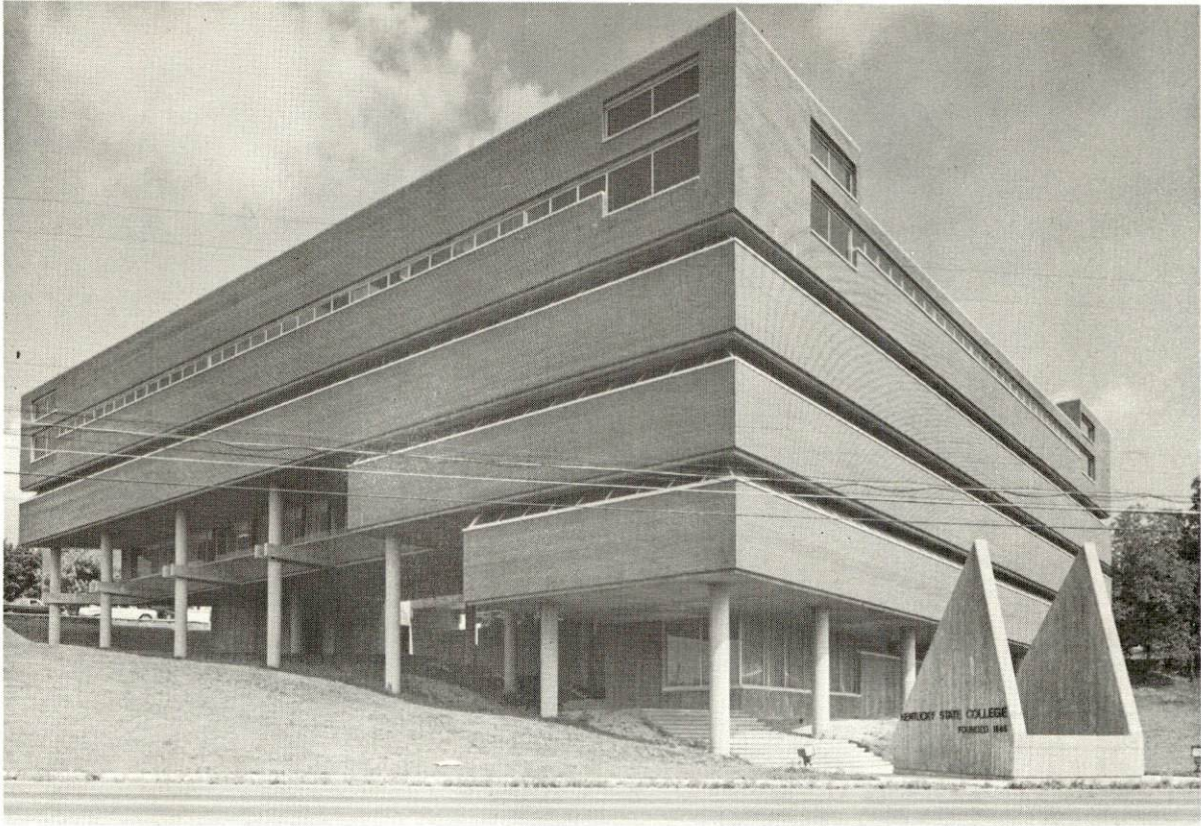




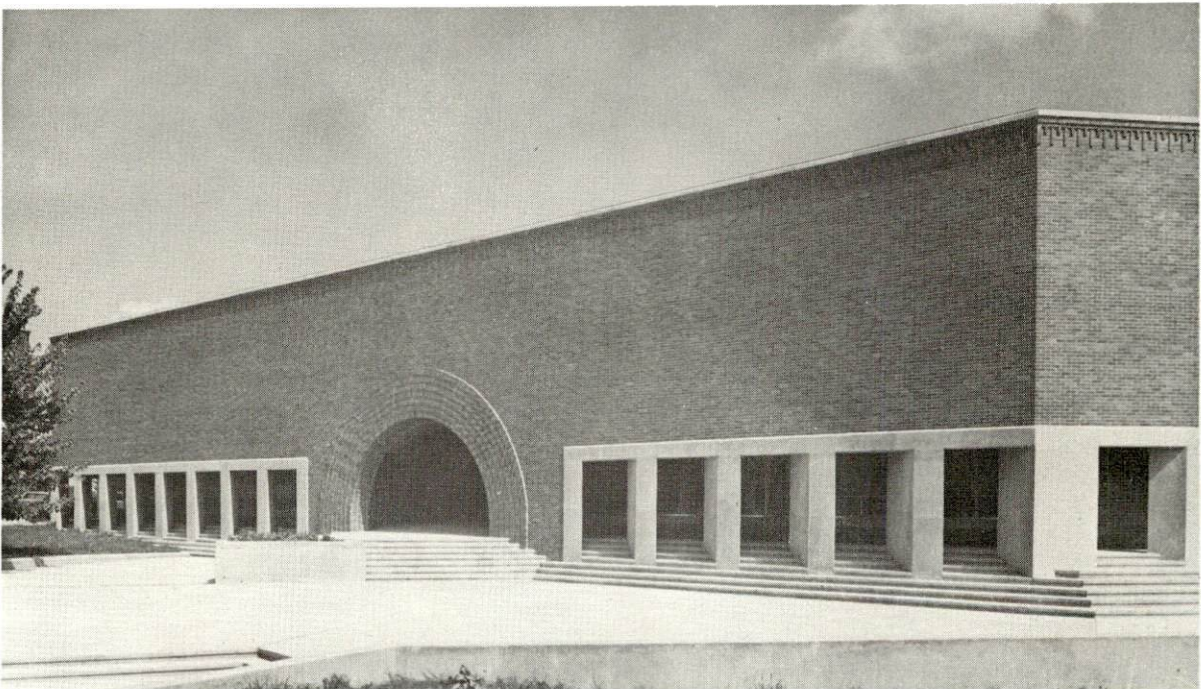
FRANKLIN COUNTY HIGH SCHOOL



KENTUCKY STATE COLLEGE



NEW CLASSROOM BUILDING



BLAZER LIBRARY BUILDING



## TRANSPORTATION

### Rail

Lines serving - Louisville & Nashville Railroad Company  
Chesapeake & Ohio Railway

Services - Passenger, freight, switching, piggyback , REA Express

RAILWAY TRANSIT TIME FROM FRANKFORT, KENTUCKY TO: 10/

City	No. of Days		City	No. of Days	
	CL			CL	
Atlanta, Ga.	2		Los Angeles, Calif.	4	
Birmingham, Ala.	2		Louisville, Ky.	1	
Chicago, Ill.	2		Nashville, Tenn.	2	
Cincinnati, Ohio	1		New Orleans, La.	3	
Cleveland, Ohio	3		New York, N. Y.	3	
Detroit, Mich.	3		Pittsburgh, Pa.	3	
Knoxville, Tenn.	2		St. Louis, Mo.	2	

### Truck Service

<u>Company</u>	<u>Home Office</u>
Bestway Express, Inc.	Nashville, Tennessee
Claxon Truck Lines, Inc.	Frankfort, Kentucky
Cooper-Jarret, Inc.	Orange, New Jersey
Dance Freight Line, Inc.	Lexington, Kentucky
Ecklar-Moore Express, Inc.	Lexington, Kentucky
McDuffee Motor Freight, Inc.	Lebanon, Kentucky
McLean Trucking Co.	Winston-Salem, North Carolina
Motor Freight Corp.	Terre Haute, Indiana
O.K. Trucking Co.	Cincinnati, Ohio
Reliance Trucking Co., Inc.	Louisville, Kentucky
Smith's Transfer Corporation of Virginia	Staunton, Virginia
Turner Expediting Service	Louisville, Kentucky
Wilson Freight Co.	Cynthiana, Kentucky
United Parcel Service	Louisville, Kentucky

HIGHWAY MILES AND TRUCK TRANSIT TIME IN DAYS FROM  
FRANKFORT, KENTUCKY, TO SELECTED MARKET CENTERS

City	Highway Miles	Delivery Time <u>11</u> / LTL TL		City	Highway Miles	Delivery Time LTL TL	
		LTL	TL			LTL	TL
Atlanta, Ga.	431	2	2	Los Angeles, Calif.	1,883	7	5
Birmingham, Ala.	478	2	2	Louisville, Ky.	49	1	1
Chicago, Ill.	303	2	2	Nashville, Tenn.	230	2	1
Cincinnati, Ohio	89	1	1	New Orleans, La.	818	3	2
Cleveland, Ohio	353	2	2	New York, N. Y.	717	4	3
Detroit, Mich.	325	2	2	Pittsburgh, Pa.	372	3	2
Knoxville, Tenn.	198	1	1	St. Louis, Mo.	317	2	2

Air

	<u>Local</u>	<u>Nearest Commercial</u>
Location:	Capital City Airport Frankfort	Blue Grass Field Lexington, Kentucky, 20 miles distant
Runways:	1 paved	3 paved
Length:	5,000 feet	6,500 feet; 3,500 feet; 3,500 feet
Traffic Control:	Wind tee	Tower approach and ground system, ILS system
Lighting:	Beacon, runway lights, sundown to sunrise	Approach lighting, beacon, runways and obstruction lighted
Services:	80 - 100 octane, hangar, storage, auto rental, taxi, air charter	Eastern, Delta, Piedmont, Allegheny and Buckeye Airlines; 80, 100 and 145 octane; jet fuel; major A&E repairs; storage; restaurant; Weather Bureau; flight instruction; charter service; taxi; car rental service

Bus

Southern Greyhound Bus Lines  
Trailways Bus Line  
Frankfort Bus Line (intra-city)

Taxi

24-hour service, radio dispatch

Rental Services

Car and truck rentals



## POWER AND FUEL

### Electricity

Company serving - Frankfort Electric and Water Plant Board  
Source of Power - Kentucky Utilities Company  
Total generating capacity - 773,000 KW  
Industrial rates negotiated by - Kentucky Utilities Company, Industrial  
Development Department, Lexington, Kentucky

Company serving Franklin County - (1) Kentucky Utilities Company,  
(2) Fox Creek RECC  
Source of power - (1) Kentucky Utilities Company, (2) East Kentucky  
Power Cooperative  
Total generating capacity - (1) 773,000 KW, (2) 515,000 KW  
Industrial rates negotiated by - (1) Kentucky Utilities Company,  
Lexington, Kentucky; (2) East Kentucky Power Cooperative,  
Winchester, Kentucky

### Natural Gas

Company serving - Columbia Gas of Kentucky  
Source of supply - Kentucky Gas Transmission Corporation  
Size of transmission lines - 12, 10, 8 and 6 inches  
Distribution lines - 2 to 12 inches  
Btu content - 1,000; Specific gravity - .6  
Distribution pressure - 4 oz. low pressure; 5 lbs. intermediate  
pressure

#### Rates:

First	1 Mcf	\$2.50 (Minimum)
Next	49 Mcf	.8430 Per Mcf
Next	50 Mcf	.7900 Per Mcf
Next	100 Mcf	.7700 Per Mcf
Next	800 Mcf	.7500 Per Mcf
Next	1,000 Mcf	.7200 Per Mcf
Minimum Bill \$2.50		

## WATER AND SEWERAGE

### Water

Company serving - Frankfort Electric and Water Plant Board  
Source - Kentucky River  
Treatment plant capacity - 6,000,000 gpd  
Average daily consumption - 3,500,000 gallons  
Peak daily consumption - 5,250,000 gallons  
Type treatment - Coagulation, sedimentation, filtration and chlorination  
Storage capacity - 11,700,000 gallons  
Average pressure - 85 psi  
Average temperature - 60°  
Size mains - 4 to 24 inches

### MONTHLY WATER RATES FOR WHOLESALE AND INDUSTRIAL CONSUMERS

#### Applicable to:

All Water Service.

	<u>Gallons Per Month</u>	<u>City</u>	<u>Rural Outside City Limits</u>
First	5,000	\$ .30 per M gallons	\$ .40
Next	20,000	.20 per M gallons	.20
Next	175,000	.15 per M gallons	.15
Next	800,000	.12 per M gallons	.12
Excess		.10 per M gallons	.10

#### Minimum Bill

5/8 and 3/4-inch meters	\$ 1.00 month	\$ 1.25
1-inch meters	1.50 month	1.50
1 1/2-inch meters	2.50 month	2.50
2-inch meters	5.00 month	5.00
3-inch meters	10.00 month	10.00
4-inch meters	20.00 month	20.00
6-inch meters	30.00 month	30.00
8-inch meters	50.00 month	50.00

Booster Pumping (Outside City) - plus 20 percent and in no case shall it be less than 3 1/4¢ per thousand gallons.



Surface water sources - Kentucky River and Elkhorn Creek  
Average discharge - Kentucky River about 6,900 cfs; Elkhorn Creek  
380 cfs  
Expected ground water yield - 50-200 gpm in alluvium along streams  
and grades outward to 500 gpm or less  
Yield along main streams - 50-200 gpm

#### Sewerage

Company serving - Frankfort Municipal Sewer Board  
Design capacity - 3,400,000 gpd  
Average daily flow - 2,600,000 gallons  
Treatment - Primary  
Type treatment - Aeration, clarifiers, digesters, drying beds  
Treated effluent discharged into - Kentucky River  
Size of sanitary mains - 8 to 27 inches  
Size of storm mains - 12 inches to 6 feet  
Rates - 150 percent of total amount of monthly water bill.

## LOCAL GOVERNMENT

### City

Structure - Mayor - 4-year term; 4 councilmen - 2-year terms;  
city manager  
Budget 1970-71 - General Fund \$1,526,484  
Fees and licenses - Frankfort has a one percent occupational license  
tax. Business license is required.

### County

Structure - County judge - 4-year term; 5 magistrates - 4-year terms  
Budget 1969-70 - General Fund \$332,372; Road Fund \$281,600

### Assessed Value of Property, 1969

<u>Classes of Property*</u>	<u>Frankfort</u>	<u>Franklin County</u>
Real Estate	\$91,364,089	\$149,863,578
Tangibles	18,543,590	33,862,632
Public Service	9,594,438	15,027,636

### Local General Property Tax Rates Per \$100 of Assessed Valuation, 1970 <sup>12/</sup>

<u>Taxing Unit**</u>	<u>Frankfort</u>	<u>Franklin County</u>
State	\$ .015	\$ .015
County	.190	.190
School	.660	.527
City	.345	
Total	\$ 1.210	\$ .732

\*Property assessed at 100 percent of fair value.

\*\*Manufacturing machinery, raw materials inventories and goods in  
process inventories are not subject to local tax. State rate is only  
\$0.15 per \$100.





MUNICIPAL BUILDING - CITY OF FRANKFORT

## Planning and Zoning

Agency - The Frankfort-Franklin County Planning Commission  
Plans completed - Comprehensive Plan, Housing Code Survey,  
Neighborhood Analysis, Commercial Area Study, Zoning Ordinance,  
Subdivision Regulations and Public Improvements Program  
Codes adopted - Building, housing, plumbing, electric, fire codes  
Other programs - Public housing, urban renewal

## Safety

<u>Police</u>	<u>Frankfort</u>	<u>Franklin County</u>
Total staff	47	7
Radio-patrol cars	10	2
Other equipment	2 cycles 1 Cushman	

## Fire

American Insurance Assoc- iation Fire Rating	6	9
Full-time staff	39	6
Equipment:		
1,500-gpm pumper	1	
1,000-gpm pumper	1	2
750-gpm pumper	1	
500-gpm pumper	1	
350-gpm pumper	1	
ladder truck	1	
utility truck	1	
Other - Ambulance service - 2-4 place ambulances, oxygen, resuscitator, first aid training, amphibious duck. There are three fire stations located in Frankfort.		

## Sanitation

	<u>Frankfort</u>	<u>Franklin County</u>
Type service	municipal	contract
Cost		
residential	none	contract
business	contract	contract
Collection frequency		
residential	twice a week	when desired
business	when desired	when desired
Trash pickup	once weekly	when desired
Disposal method	incinerator, land fill	incinerator, land fill
	21.	



## HEALTH

### Hospitals

<u>General Hospital</u>	<u>Location</u>	<u>Beds</u>
King's Daughters' Hospital	Frankfort	117
General hospital facilities - 4 operating rooms, 1 recovery room, laboratory, X-ray, intensive care, emergency room, coronary unit, pharmacy, OB section, outpatient clinic		
Medical staff - 34 doctors, 25 regular and 25 part-time registered nurses, 14 graduate licensed practical nurses, 10 licensed practical nurses, 10 orderlies		

### Nursing Homes

	<u>Number</u>	<u>Beds</u>
Extended care homes	1	100
Personal care homes	1	24

### Public Health

Facility - Franklin County Public Health Service  
Staff - Administrator, 2 nurses, 2 health inspectors and 1 secretary  
Budget 1970-71 - \$50,661

## OTHER LOCAL FACILITIES

### Communications

Telephone - South Central Bell Telephone Company  
Services - standard

Telegraph - Western Union  
Services - phone money orders

Postal - U.S. Post Office  
Class - 1  
Mail received - 9 times daily  
Mail dispatched - 9 times daily

Newspapers - The State Journal  
Daily and circulation - 9,500  
Other papers received from - Louisville and Lexington, Kentucky

Radio - WFKY  
Hours of operation AM - 5:30 AM - 1:30 AM  
Hours of operation FM - 5:30 AM - 1:30 AM  
Stations received from - Louisville and Lexington, Kentucky;  
Cincinnati, Ohio

Television -  
Cable service  
Reception from - Lexington and Louisville, Kentucky; Cincinnati, Ohio  
Kentucky Educational Television - Owenton transmitter, Channel 52

### Library Services

Public Libraries - Paul Sawyer City-County Library  
Size collection - 39,000 volumes  
Circulation, 1969-70 - 113,375 (library and bookmobile)  
Services - reference service, story hour, 4 open houses, art exhibits,  
fair, records, magazines, paper backs, films

Public Libraries - Kentucky Department of Libraries  
Size collection - 65,000 volumes  
Circulation, 1969-70 - 25,812

## Religious Institutions

Number of churches - 32

Denominations - Apostolic, Assembly of God, Baptist, Christian, Christian Science, Church of Christ, Episcopal, Lutheran, Methodist, Nazarene, Presbyterian, Salvation Army

## Financial Institutions

<u>Banks</u>	<u>Statement as of June 30, 1970</u>	
	<u>Assets</u>	<u>Deposits</u>
Farmers Bank and Capital Trust Company	\$104,499,161.61	\$98,810,125.33
State National Bank	13,451,604.26	11,997,090.27
<u>Savings and Loan Associations</u>	<u>Assets</u>	<u>Shared Accounts</u>
First Federal Savings and Loan Association	\$ 19,572,139.81	\$17,369,790.32
Capital Building and Loan Association*	12,015,670.26	10,764,566.81

\*Statement as of December 31, 1969.

## Hotels and Motels

<u>Number</u>	<u>Units</u>
11	426

## Clubs and Organizations

Business and Civic:- Chamber of Commerce, Rotary, Jaycees, Lions, Club, Optimist Club, three Kiwanis Clubs, Franklin Community Council, Ruritan Club, Exchange Club, East Frankfort Optimist

Fraternal - Elks Club, Masonic, IOOF, Moose, Eagles, Knights of Columbus, Knights of Pythias, American Legion, VFW, Capital City Shrine Club

Women's - Hadassah, American Legion Auxiliary, VFW Auxiliary, DAR, Eastern Star, Homemakers, Garden Club, Daughters of Confederacy, Younger Woman's Club, B & PW Club, Altrusa, War Mothers, Younger Mothers, Newcomers Club, Beta Sigma Phi, American Association of University Women, Opti-Mrs. Club, Heritage Women's Club, Frankfort Woman's Club, Jaycettes



Youth - Minor League, Little League, Pee Wee League, Babe Ruth League, Connie Mack League, YMCA, Boy Scouts, Girl Scouts, 4-H Club, FTA, FHA, FBLA, FFA and Junior Achievement

Other - Music Club, Writers, Art, Confederate, Frankfort Country Club, Frankfort Boat Club, Bridge Club, Little Theatre, Frankfort-Franklin County Council on Aging, Great Books



JUNIPER HILL MUNICIPAL PARK  
18-HOLE GOLF COURSE

## RECREATION

### Local

#### Public Recreation Facilities

Supervised program - Frankfort Recreation Department

Parks - 2

Playgrounds - 11

Swimming pools - 2

Golf courses - 2

Tennis courts - 8

Baseball diamonds - 9

Football fields - 3

#### Private Recreation Facilities

Country club - 1

Golf course - 1

Swimming pool - 1

Movie theaters - 1 indoor - 2 outdoor

Bowling lanes - 1

Other - Tennis courts

#### Tourist Attractions

State Capitol, Old State Capitol, Liberty Hall, Daniel Boone's grave,  
Celebrity Corner, Fort Hill, Floral Clock

#### Cultural Events

Concert series, summer pop concerts, art exhibits, lectures,  
lyceum concerts at Kentucky State College

### Area (Within 30 miles)

Lexington, 28 miles distant, has several little theater groups, the  
Central Kentucky Concert and Lecture Series.



# AGRICULTURE - NATURAL RESOURCES - CLIMATE

## Agriculture 13/

	<u>Franklin County</u>	<u>Labor Market Area</u>
Total land area (acres)	135,040	1,226,880
Percent of area in farm land	75.9	86.4
Number of farms	802	7,590
Average size of farms (acres)	127.7	139.6
1964 value of all farm products	\$3,979,625	\$53,213,337
Value per farm	4,962	7,011
Total crop sales	2,770,957	30,646,046
Total livestock & livestock products	1,207,430	24,050,051
1967 agricultural production included:		
Burley tobacco (lbs.)	5,232,000	54,192,000
Corn (bu.)	112,000	2,475,000
Cattle and calves (number)	21,200	216,000
Hogs and pigs (number)	2,700	55,800
Milk production (1966) (lbs.)	6,900,000	269,400,000

## Natural Resources

Principal mineral resources	Limestone
Other mineral resources	Clay, shales, sand, gravel certain vein minerals
Acres of commercial forest land	44,300
Most abundant tree species	White oaks, red oaks, hickories, ash, red cedar, hard maple, yellow poplar

## Climate 14/

	<u>Franklin County</u>
Temperature	
Annual mean (30-year record)	55.6 degrees
Average annual (1969)	54.6 degrees
Record highest (6-year record)	98.0 degrees
Record lowest (6-year record)	-10.0 degrees
Seasonal heating degree-days (30-year record)	4,683
Precipitation	
Mean annual total (30-year record)	44.73 inches
Mean annual snow and sleet (25-year record)	16.0 inches
Total precipitation (1969)	39.50 inches
Mean No. days precipitation (25-year record)	
(.01 inches or more)	128
Average No. days thunderstorms (25-year record)	47
Prevailing winds (17-year record)	South

## HISTORY

Franklin County, the eighteenth county formed in Kentucky, dates from 1794. It was taken from Woodford, Mercer, and Shelby Counties. Later it gave lands to help form Gallatin (1798), Owen (1819), and Anderson (1827). It contains 211 square miles, and is bisected by the Kentucky River which flows in a northwesterly direction through it. This river meanders through a deep impression which was partly cut by it and partly resulted from a series of ancient earth movements. In many places, the high cliffs are precipitous and appear to threaten the flow of water between them. Upland on both sides of the river the topography of the land is gently undulating and hilly with fertile soils which produce abundant harvests. The county is well-drained by many small streams that empty into the Kentucky River. Franklin County was named for Benjamin Franklin, who was a member of the committee that wrote the Declaration of Independence, which he signed, and a member of the committee that drafted the Treaty of Paris in 1783, which ended the Revolutionary War.

Christopher Gist, while in the employ of the Ohio Land Company in 1751, was the first explorer on record to pass through Franklin County. John Findley traversed the area the next year, and Daniel Boone roamed over it several times during the next two decades. In 1773, James, George, and Robert McAfee, Samuel Adams, Hancock Taylor, and Matthew Bracken surveyed the present site of Frankfort.

The first settlement in Franklin County was made at Leestown in 1775 by Captain Hancock Lee. This site is a part of Frankfort today and is the oldest continuing inhabited place along the Kentucky River. In 1776, William Haydon established Haydon's Station two miles farther up the river. In 1783, John Major, Sr., founded Major's Station on the plateau east of the town. In 1784, James Arnold built Arnold's Station opposite the mouth of Glen's Creek. The next year Robert Hamilton erected a station that bore his name two miles to the west. Judge Henry Innes founded Innes' Station in Frankfort in 1786. Thus the settlements in the vicinity grew up to meet the needs of several persons, and they all eventually gravitated toward the present town site.

Several mineral springs are in the vicinity of Frankfort. Small veins of lead, imbedded in limestone, were found along Flat and North Elkhorn Creeks. A good grade of potters' clay exists northeast of the town, and river marble suitable for building purposes is present along the Kentucky River. The Old Capitol Building was constructed of Kentucky marble taken from the bed of the river.



Frankfort, the center of Kentucky's government as well as the county seat of Franklin County, was laid out by General James Wilkinson and established by Virginia in 1786. It was incorporated in 1835. It was named in honor of Stephen Frank who was killed by the Indians while on the way to Mann's Salt Lick in Jefferson County.

Kentucky's first capitol building was completed on November 3, 1794, two years, five months and one day after she became the fifteenth state in the Union. It was located near the present site of the Old Capitol Building. It was destroyed by fire on November 25, 1813. The second State Capitol was completed in 1816, and was also destroyed by fire in 1824. A third capitol building was completed in 1829. It was designed by Gideon Shyrock and is regarded as an architectural marvel whose circular self-supporting stairway is beautiful, yet challenging. It is an historical landmark and is the home of the Kentucky Historical Society. It houses a magnificent collection of Kentuckiana. A spirited contest occurred during the writing of Kentucky's fourth Constitution regarding an official capital site. Louisville and Lexington, as well as a dozen other towns, wanted it. When the Legislature in 1893 saw no reason to move the capital, Frankfort became the official site. The new building was constructed of Bedford limestone and Vermont granite. Charles Henry Neihaus of New York was its designer, and Frank M. Andrews was the architect. It resembles the national capitol at Washington. The Executive Mansion was built in 1912.

The Frankfort Cemetery lies along the edge of the bluff that overlooks the town from the east. Near its entrance is the William Goebel Monument which marks the grave of the man who was assassinated on the Old Capitol grounds in 1900, and who served as Governor for three days. Near the edge of the bluff is the Boone Memorial, which marks the place the remains of Daniel Boone and his wife Rebecca were interred in 1845 when they were brought to Kentucky from Missouri, their last home.

Most of Kentucky's famous political sons have spent some time in Frankfort. To some the stay has been a stepping stone to national prominence, while to others, it was the height of beneficial and satisfying careers. Four representatives to the Lower House of Congress and seven United States Senators have lived in Franklin County. One of them, John J. Crittenden, also served twice in the Office of the United States Attorney General. South Trimble was Clerk of the United States House of Representatives for thirteen Congresses.

Frankfort has been the scene of many important firsts including the first water works in the State, the first Female Sabbath School, and the cultivation of the first Bibb lettuce in the west. Here history is made constantly, and over 3,000,000 people look to her for guidance.



## SOURCES OF INFORMATION

- 1/ U.S. Department of Commerce, Bureau of the Census, Census of Population 1950, 1960, 1970 (Preliminary figures).
- 2/ Kentucky Department of Economic Security, Division of Research and Statistics.
- 3/ Kentucky Department of Economic Security, Number of Workers in Manufacturing Industries Covered by Kentucky Unemployment Insurance Law Classified by Industry and County, September 1959, September 1969.
- 4/ Kentucky Department of Commerce, 1970 Kentucky Directory of Manufacturers.
- 5/ Kentucky Department of Economic Security, Division of Employment Service, Frankfort Office.
- 6/ Kentucky Department of Economic Security, Kentucky Labor Supply Estimates by County, January 1970.
- 7/ Kentucky Department of Commerce, Future Labor Supply by 1976.
- 8/ University of Kentucky, Office of Development Services and Business Research, Total Personal Income for Kentucky.
- 9/ University of Kentucky, Office of Development Services and Business Research, Per Capita Income in Kentucky.
- 10/ Southern Railway System, Louisville, Kentucky.
- 11/ Claxon Truck Lines, Inc., Frankfort, Kentucky.
- 12/ Kentucky Department of Revenue, Kentucky Property Tax Rates, 1970.
- 13/ U.S. Department of Commerce, Bureau of the Census, Census of Agriculture, 1964. U.S. Department of Agriculture and Kentucky Department of Agriculture, Kentucky Agricultural Statistics, 1968.
- 14/ U.S. Department of Commerce, Environmental Science Services Administration, Climatological Data, 1969.

All other information was obtained from governmental offices, local businesses and organizations.