

1971

## Industrial Resources - Gallatin County

Kentucky Library Research Collections  
Western Kentucky University, [spcol@wku.edu](mailto:spcol@wku.edu)

Follow this and additional works at: [https://digitalcommons.wku.edu/gallatin\\_cty](https://digitalcommons.wku.edu/gallatin_cty)



Part of the [Business Administration, Management, and Operations Commons](#), [Growth and Development Commons](#), and the [Infrastructure Commons](#)

---

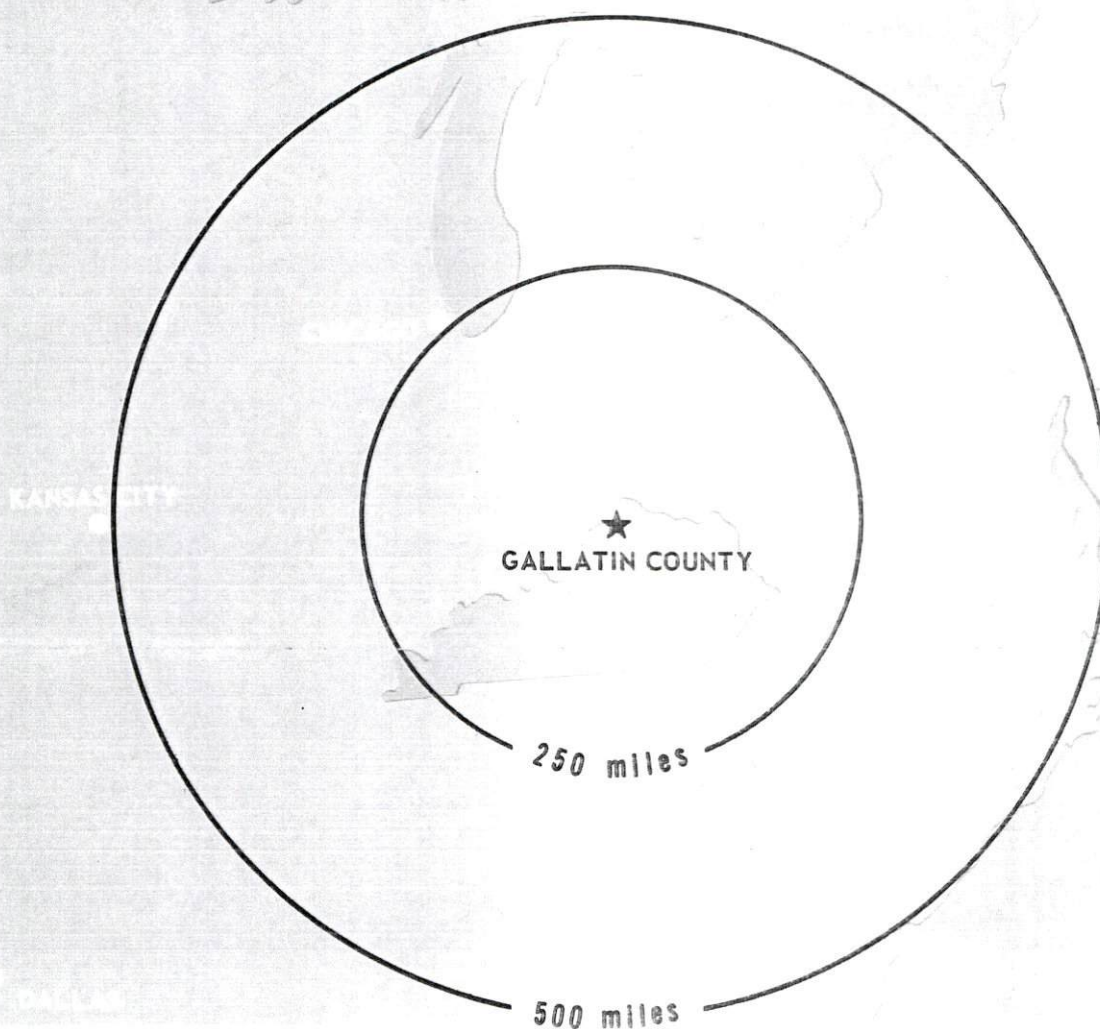
### Recommended Citation

Kentucky Library Research Collections, "Industrial Resources - Gallatin County" (1971). *Gallatin County*. Paper 9.  
[https://digitalcommons.wku.edu/gallatin\\_cty/9](https://digitalcommons.wku.edu/gallatin_cty/9)

This Report is brought to you for free and open access by TopSCHOLAR®. It has been accepted for inclusion in Gallatin County by an authorized administrator of TopSCHOLAR®. For more information, please contact [topscholar@wku.edu](mailto:topscholar@wku.edu).

# INDUSTRIAL RESOURCES

## ***GALLATIN COUNTY*** ***KENTUCKY***



GALLATIN COUNTY INDUSTRIAL SITES  
1971

For more detailed information concerning the following sites contact F. R. Weldon, Warsaw, Kentucky; Clifford Crouch, Glencoe, Kentucky; Marvin Crume, Sparta, Kentucky; or the Kentucky Department of Commerce, Frankfort, Kentucky.

WARSAW

SITE #1: ACREAGE: 55 acres  
LOCATION: 6 miles west of Warsaw  
HIGHWAY ACCESS: U. S. 42 runs through site.  
RAILROADS: Not rail served  
WATER: Ground water  
GAS: Nearest gas main is 5 1/2 miles east of site  
ELECTRICITY: Kentucky Utilities Company  
SEWERAGE: Package plant necessary  
OWNERSHIP: Private

SITE #2: ACREAGE: 15 acres  
LOCATION: 2 miles southeast of Warsaw  
HIGHWAY ACCESS: Access road to Kentucky 35  
RAILROADS: Not rail served  
WATER: Warsaw Water Department; line approximately 1 1/2 miles from site, will extend to site  
GAS: Union Light, Heat and Power Company; main approximately 1 1/2 miles from site  
ELECTRICITY: Kentucky Utilities Company  
SEWERAGE: Package plant necessary  
OWNERSHIP: Private

SITE #3: ACREAGE: 22 acres  
LOCATION: Approximately 5 miles northeast of Warsaw  
HIGHWAY ACCESS: Paved road to U. S. 42 and U. S. 127  
RAILROADS: Not rail served  
WATER: Raw water  
GAS: Union Light, Heat and Power Company  
SIZE MAIN: 10-inch main, 1 mile east of site  
ELECTRICITY: Kentucky Utilities Company  
SEWERAGE: Package plant necessary  
OWNERSHIP: Private

SPARTA

SITE #5: ACREAGE: 35 acres  
LOCATION: 1 1/2 miles north of Sparta  
HIGHWAY ACCESS: Kentucky 35 borders site on west. I-71 borders site on south.  
RAILROADS: Not rail served  
WATER: Nearest line 2 miles from site  
GAS: Natural gas is not available in Sparta.  
ELECTRICITY: Kentucky Utilities Company  
SEWERAGE: Package plant necessary  
OWNERSHIP: Private

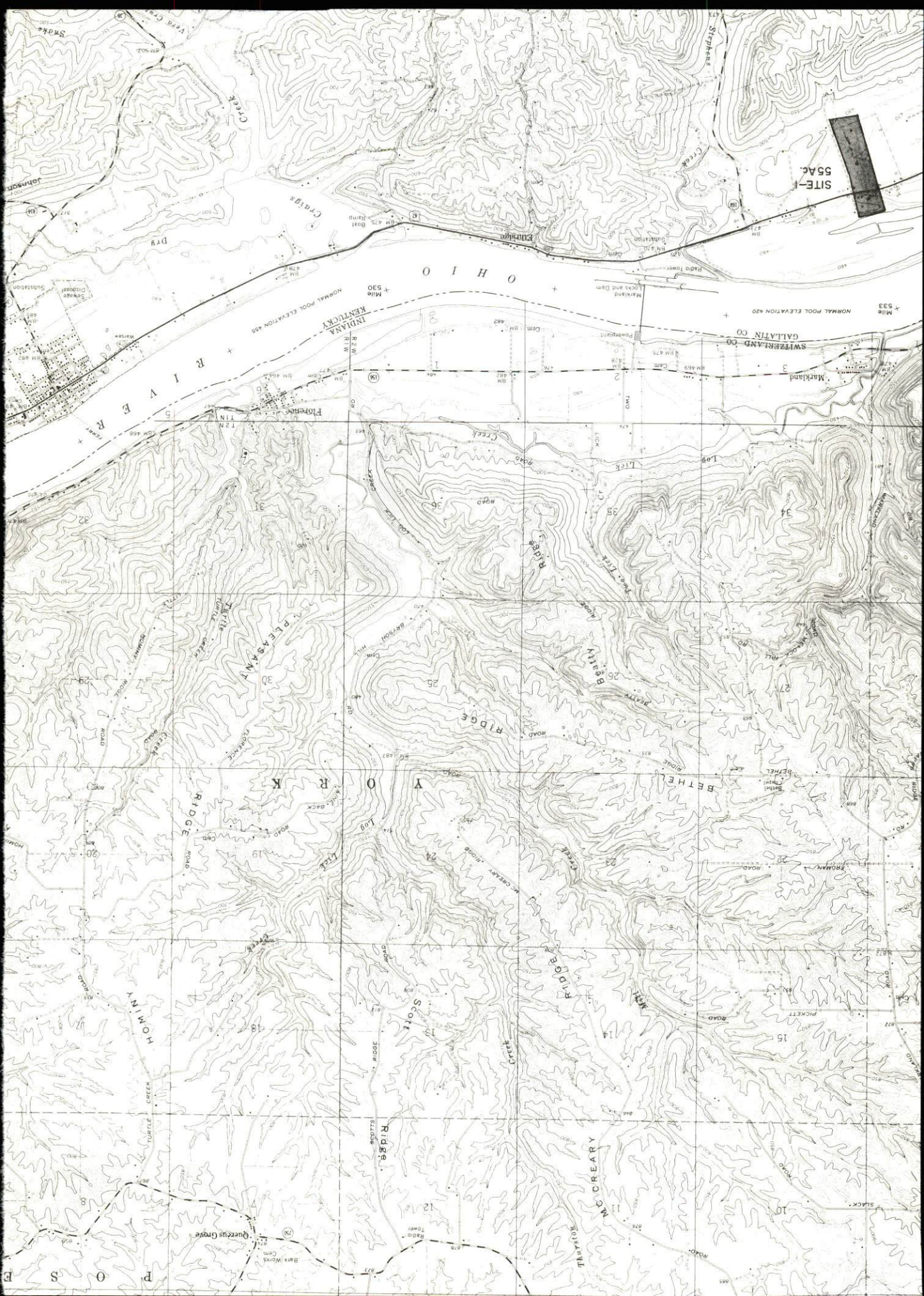
SITE #6: ACREAGE: 50 acres  
LOCATION: 1 1/2 miles north of Sparta  
HIGHWAY ACCESS: Kentucky 465 borders site on south. I-71 borders site on north.  
RAILROADS: Not rail served  
WATER: Nearest line 2 miles from site  
GAS: Natural gas is not available in Sparta.  
ELECTRICITY: Kentucky Utilities Company  
SEWERAGE: Package plant necessary  
OWNERSHIP: Private

SITE #7: ACREAGE: 20 acres  
LOCATION: One-half mile west of Sparta  
HIGHWAY ACCESS: Paved access road along northern boundary. I-71 is 2 miles north.  
RAILROADS: Louisville & Nashville Railroad along southern boundary  
WATER: Tri-Village Water District  
SIZE LINE: 4-inch line, 1,000 feet from site  
GAS: Natural gas is not available in Sparta.  
ELECTRICITY: Kentucky Utilities Company  
SEWERAGE: Package plant necessary  
OWNERSHIP: Private

GLENCOE

SITE #4: ACREAGE: 4 acres  
LOCATION: Borders west city limits  
HIGHWAY ACCESS: Paved access road to U. S. 127; I-71 is 1 mile from site.  
RAILROADS: Louisville & Nashville Railroad along southern boundary  
WATER: Tri-Village Water District  
SIZE LINE: 6-inch line, 200 yards from site  
GAS: Union Light, Heat and Power Company  
SIZE MAIN: 3-inch main, 200 yards from site  
ELECTRICITY: Kentucky Utilities Company  
SEWERAGE: Package plant necessary  
OWNERSHIP: Private







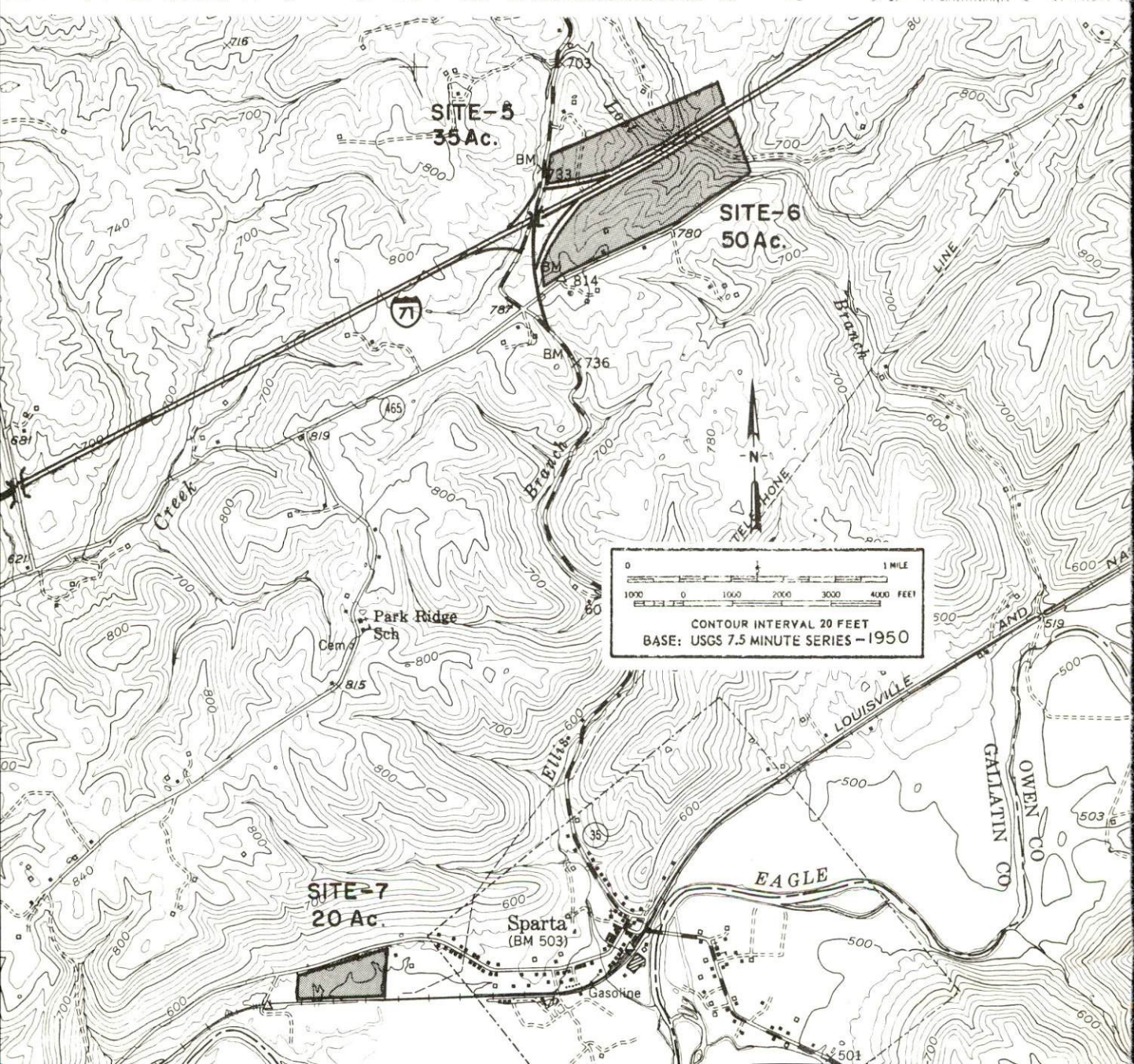


0 1000 2000 3000 4000 FEET  
0 1 2 3 4 5 6 7 8 9 10 MILE  
CONTOUR INTERVAL 10 FEET  
BASE: USGS 7.5 MINUTE SERIES -1961-66

SITE-3  
22 Ac

SITE-2  
15 Ac







INDUSTRIAL RESOURCES  
GALLATIN COUNTY, KENTUCKY

Prepared by  
The Kentucky Department of Commerce  
in cooperation with  
The Gallatin County Development Association, Inc.

1971

## TABLE OF CONTENTS

<u>Chapter</u>	<u>Page</u>
INDUSTRIAL SITES. . . . .	i
GALLATIN COUNTY, KENTUCKY - A RESOURCE PROFILE . . .	1
THE LABOR MARKET . . . . .	3
Population Trends . . . . .	3
General Employment Characteristics, 1969 . . . . .	3
Manufacturing Employment Trends by Industry . . . . .	3
Gallatin County Manufacturing Firms, Their Products and Employment . . . . .	4
Wage Rates for Selected Occupations . . . . .	4
Labor Organizations . . . . .	4
Current and Future Labor Supply. . . . .	5
Total Personal Income . . . . .	5
Per Capita Personal Income. . . . .	5
EDUCATION. . . . .	6
Public Schools . . . . .	6
Vocational Schools . . . . .	6
Colleges and Universities . . . . .	7
TRANSPORTATION. . . . .	8
Rail. . . . .	8
Truck Service . . . . .	8
Air . . . . .	9
Bus . . . . .	9
Taxi . . . . .	9
Rental Services . . . . .	9
POWER AND FUEL . . . . .	10
Electricity . . . . .	10
Natural Gas . . . . .	10
WATER AND SEWERAGE . . . . .	11
Water . . . . .	11
Sewerage . . . . .	12

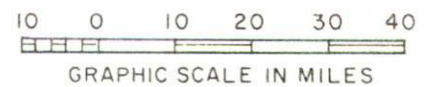


<u>Chapter</u>	<u>Page</u>
LOCAL GOVERNMENT . . . . .	13
City . . . . .	13
County . . . . .	13
Assessed Value of Property - 1970 . . . . .	13
Local General Property Tax Rates Per \$100 of Assessed Valuation - 1970 . . . . .	13
Safety . . . . .	14
Police . . . . .	14
Fire . . . . .	14
Rescue Service . . . . .	14
Sanitation . . . . .	14
HEALTH . . . . .	15
Hospitals . . . . .	15
Nursing Homes . . . . .	15
Public Health . . . . .	15
OTHER LOCAL FACILITIES . . . . .	16
Communications . . . . .	16
Religious Institutions . . . . .	17
Financial Institutions . . . . .	17
Hotels and Motels . . . . .	17
Clubs and Organizations . . . . .	17
RECREATION . . . . .	18
Local . . . . .	18
Area . . . . .	18
AGRICULTURE - NATURAL RESOURCES - CLIMATE . . . . .	19
Agriculture . . . . .	19
Natural Resources . . . . .	19
Climate . . . . .	19
HISTORY . . . . .	20



# GALLATIN COUNTY LABOR MARKET AREA

\*Shaded area denotes labor market area





## GALLATIN COUNTY, KENTUCKY - A RESOURCE PROFILE

### Location

Gallatin County is located in northern Kentucky adjacent to the Ohio River.

Warsaw, the county seat, is a small, quiet river town situated in a beautiful and highly productive valley, 39 miles southwest of Cincinnati, Ohio, 77 miles northeast of Louisville, and 78 miles north of Lexington, Kentucky.

In 1970, Warsaw had a population of 1,232, Sparta 213, and Gallatin County 4,134.

### The Economic Framework

Total employment in Gallatin County averaged 1,100 in 1969 with agriculture providing 300 of these jobs. Major industrial products are furniture and houseboats.

Per capita personal income in the county in 1969 was \$1,880, an increase of 65.5 percent for the past nine years. This figure is substantially below the Kentucky average.

In the Gallatin County labor market area, which includes Gallatin and the four surrounding Kentucky counties, employment in 1969 totaled 18,300, with trade and services providing 4,495 of these jobs. Manufacturing provided 4,105 jobs. Area industrial employment is heaviest in machinery and metal products and lumber and furniture industries.

### Resources For Growth

1. There is a current estimated labor supply of 765 men and 1,115 women available for industrial jobs in the labor market area. By 1977, an additional 2,950 men and 2,830 women will have become 18 years of age and potentially available for industrial jobs.

2. The local transportation capability is good. Interstate 71, 7 miles south of Warsaw, runs from Louisville to Boone County where it connects with Interstate 75. The Louisville & Nashville Railroad serves Sparta. Commercial air service is available at Covington, only minutes away. The Ohio River constitutes the northern boundary of Gallatin County and offers economic, bulk transportation possibilities.



3. Natural gas is furnished by the Union Light, Heat and Power Company, and Electricity is supplied by the Kentucky Utilities Company and the Owen County RECC. Raw water from the Ohio River is more than adequate for continued growth.

4. Industrial sites - Gallatin County has six sites available for industrial use.

5. There are six senior colleges and five universities within an 80-mile radius of Warsaw. An area vocational school and an extension center are only minutes away.

#### Community Programs for Improvement

Recent community improvements in Warsaw include: ambulance service, new radio-patrol car, renovation of hotel, bleachers at baseball field, improvements to playground plus new equipment, new filling station and garage, and new church.

A natural gas system was installed in Warsaw and Glencoe in the Fall of 1969.

#### Recreation, Entertainment, and Livability

Gallatin County embraces some 15 miles of Ohio River shore line which provides ideal fishing and boating. The new Lake Shore Development includes 1,000 acres of water, two public launching ramps, camping and cabins. All water sports are available.

Three state parks are located within 50 miles of Gallatin County.

Many recreational programs are offered in the Greater Cincinnati area. The Latonia Race Track at Florence, 26 miles; and River Downs at Cincinnati, 39 miles, provide almost continuous opportunity to enjoy the sport of kings.

# THE LABOR MARKET

## POPULATION TRENDS <sup>1/</sup>

Area	Population			Percent Change	
	1970	1960	1950	1960-70	1950-60
Sparta	213	225	298	- 9.4	-24.5
Warsaw	1,232	981	981	+25.6	-
Labor Market Area	62,938	51,511	44,062	+22.2	+16.9
Gallatin County	4,134	3,867	3,969	+ 6.9	- 2.6
Boone County	32,812	21,940	13,015	+49.6	+68.6
Carroll County	8,523	7,978	8,514	+ 6.8	- 6.3
Grant County	9,999	9,489	9,809	+ 5.4	- 3.3
Owen County	7,470	8,237	9,755	- 9.3	-15.6

## GENERAL EMPLOYMENT CHARACTERISTICS, 1969 <sup>2/</sup>

Major Employment Group	Employment	
	Gallatin County	Labor Market Area
TOTAL	1,100	18,300
Agricultural	300	3,600
Nonagricultural	800	14,700
Manufacturing	47	4,106
Trade and Services	143	4,494
Government	200	2,250

## MANUFACTURING EMPLOYMENT TRENDS BY INDUSTRY JUNE 1970 AND 1960 <sup>3/</sup>

Industry	Gallatin County			Labor Market Area		
	1970	1960	%Change	1970	1960	%Change
TOTAL	46	21	+119.0	3,881	728	+ 433.1
Food and kindred products	0	0	-	68	134	- 49.3
Lumber & furniture	36	21	+ 71.4	920	116	+ 693.1
Printing, publishing, paper	0	0	-	368	26	+1315.4
Chemicals, petroleum, coal, rubber	0	0	-	729	203	+ 259.1
Stone, clay & glass	0	0	-	166	23	+ 621.7
Primary metals	0	0	-	63	0	-
Machinery & metal products	9	0	-	1,356	111	+1121.6
Others	1	0	-	211	115	+ 83.5



GALLATIN COUNTY MANUFACTURING FIRMS,  
THEIR PRODUCTS AND EMPLOYMENT <sup>4/</sup>

<u>Firm</u>	<u>Product</u>	<u>Employment</u>		
		<u>Total</u>	<u>Male</u>	<u>Female</u>
Gallatin County Farm Supply	Prepared animal feed	5	3	2
Gallatin County News	Newspaper, job printing	3	3	-
Houseboats, Inc.	Houseboats	10	10	-
The Warsaw Furniture Co.	Wood household furniture	26	20	6

WAGE RATES FOR SELECTED OCCUPATIONS  
GALLATIN COUNTY, KENTUCKY <sup>5/</sup>

<u>Classification</u>	<u>Wages Per Hour</u>		
	<u>Starting</u>	<u>Maximum</u>	<u>Prevailing</u>
<u>Production Employees</u>			
Welder, Arc or Acetylene (Class-A)	\$1. 95	\$2. 25	\$2. 15
<u>Service Employees</u>			
Laborer	\$1. 60	\$2. 48	\$2. 05
Mechanic, Maintenance	2. 05	3. 18	2. 65
Truck Driver, Industrial (Class-A)	1. 60	1. 82	1. 75
<u>Office Employees</u>			
Secretary	\$1. 60	\$2. 05	\$1. 85
Typist	1. 60	2. 00	1. 80

LABOR ORGANIZATIONS

There are no unions representing manufacturing workers in Gallatin County.

CURRENT AND FUTURE LABOR SUPPLY -  
GALLATIN COUNTY LABOR MARKET AREA

Area	Current Labor Supply, 1970 <sup>6/</sup>			Future Labor Supply by 1977 <sup>7/</sup> (Becoming 18 Years of Age)		
	Total	Male	Female	Total	Male	Female
Labor Market						
Area	1,881	764	1,117	5,781	2,951	2,830
Gallatin	249	93	156	379	174	205
Boone	470	147	323	2,918	1,498	1,420
Carroll	273	103	170	790	416	374
Grant	420	146	274	915	489	426
Owen	469	275	194	779	374	405

TOTAL PERSONAL INCOME <sup>8/</sup>

Area	1969*	1959	% Change
Gallatin County	\$ 8,167,000	\$ 4,120,000	+98.2
Labor Market Area	156,691,000	86,713,000	+80.7
Kentucky	9,202,000,000	4,655,000,000	+97.7

PER CAPITA PERSONAL INCOME <sup>9/</sup>

Area	1969*	1959	% Change
Gallatin County	\$1,880	\$1,136	+65.5
Labor Market Area	\$1,880 to 2,840	\$1,136 to 2,286	-
Kentucky	2,847	1,552	+83.4

\*Preliminary.



## EDUCATION

### Public Schools

	<u>Gallatin County</u>
Total Enrollment	966
Elementary	736
High School	230
Student-Teacher Ratio	27-1
Elementary	36-1
High School	19-1
State Rating of High School	Standard
Percent High School Graduates to College	26.9
Current Expenditures Per Pupil	\$403.12
Bonded Indebtedness, as of June 30, 1970	\$189,000

### Vocational Schools

	<u>Nearest Area School</u>
Location	Northern Kentucky Area Vocational School
Miles Distant	Covington
Curriculum	36
	Auto Body Repair
	Auto Mechanics
	Business and Office Education
	Carpentry
	Cosmetology
	Data Processing
	Distributive Education
	Drafting
	Electronics Technician
	Health Occupations
	Highway Technology
	Home Economics Occupations
	Practical Nursing
	Printing
	Radio and TV Repair
	Refrigeration and Air Conditioning
	Welding
	Machine Shop
	Chef Training

Nearest Extension Center

Location	Carroll County Extension Center
Miles Distant	Carrollton
Curriculum	17
	Accounting
	Secretarial
	Welding
	Auto Mechanics
	Industrial Electricity
	Carpentry
	Air Conditioning

Colleges and Universities

<u>Name</u>	<u>Area - Within 80 miles</u>		<u>Highest Degree Conferred</u>
	<u>Location</u>	<u>Enrollment</u>	
Hanover College	Hanover, Indiana	983*	Baccalaureate
Xavier University	Cincinnati, Ohio	6,139	Masters
Kentucky State College	Frankfort, Kentucky	1,754	Baccalaureate
Thomas More College	Fort Mitchell, Kentucky	2,227	Baccalaureate
University of Kentucky	Lexington, Kentucky	17,790	Ph. D., D. M. D., J. D., M. D.
Transylvania University	Lexington, Kentucky	859	Masters
University of Louisville	Louisville, Kentucky	10,142	Ph. D., D. M. D., J. D., M. D.
Georgetown College	Georgetown, Kentucky	1,425	Masters
Bellarmino-Ursuline College	Louisville, Kentucky	1,612	Baccalaureate
University of Cincinnati	Cincinnati, Ohio	35,000	M. D., Ph. D., J. D.
Northern Kentucky State College	Covington, Kentucky	1,662	Baccalaureate

\* 1969-70 enrollment.



## TRANSPORTATION

### Rail

Line serving Sparta - Louisville & Nashville Railroad

Services - Freight, switching, REA Express. Piggyback facilities are available at Cincinnati, Ohio.

#### RAILWAY TRANSIT TIME FROM SPARTA, KENTUCKY, TO: 10/

City	No. of Days		City	No. of Days	
	CL			CL	
Atlanta, Ga.	3		Los Angeles, Calif.	6	
Birmingham, Ala.	3		Louisville, Ky.	1	
Chicago, Ill.	3		Nashville, Tenn.	2	
Cincinnati, Ohio	1		New Orleans, La.	4	
Cleveland, Ohio	3		New York, N. Y.	4	
Detroit, Mich.	3		Pittsburgh, Pa.	3	
Knoxville, Tenn.	2		St. Louis, Mo.	2	

### Truck Service

#### Company

#### Home Office

Huey Motor Express	Cincinnati, Ohio
O'Nan Transportation Company	Carrollton, Kentucky
Dixie Ohio Express, Inc.	Akron, Ohio
United Parcel Service	Louisville, Kentucky

#### HIGHWAY MILES AND TRUCK TRANSIT TIME IN DAYS FROM WARSAW, KENTUCKY, TO SELECTED MARKET CENTERS

City	Delivery		City	Delivery	
	Highway Miles	Time <u>11/</u> TL		Highway Miles	Time TL
Atlanta, Ga.	462	3	Los Angeles, Calif.	2,148	5
Birmingham, Ala.	484	3	Louisville, Ky.	77	1
Chicago, Ill.	311	3	Nashville, Tenn.	268	3
Cincinnati, Ohio	39	1	New Orleans, La.	858	4
Cleveland, Ohio	282	3	New York, N. Y.	685	5
Detroit, Mich.	294	3	Pittsburgh, Pa.	325	3
Knoxville, Tenn.	272	3	St. Louis, Mo.	344	3

Air

Nearest Commercial

Greater Cincinnati Airport  
Location: Covington, Kentucky, 36 miles distant  
Runways: 3 paved  
Length: 5,500 ft. ; 7,800 ft. ; 9,500 ft.  
Traffic Control: Tower, approach and departure control, CVG ILS system  
Lighting: Beacon, high intensity runway approach slope, REIL, boundary, sequenced flasher and obstruction lights  
Services: TWA, Delta, American, Piedmont, Allegheny, and Eastern Airlines; fuel 115/145 or lower; 650 turbine; storage; major A & E repairs; hotel; restaurant; limousine; taxi; Weather Bureau

Bus

Southern Greyhound Bus Line serves Warsaw.

Taxi

One company, 24-hour service

Rental Services

Car rentals



## POWER AND FUEL

### Electricity

Company serving Warsaw, Glencoe, and Sparta - Kentucky Utilities Company

Source of power - Kentucky Utilities Company

Total generating capacity - 773,000 KW

Industrial rates furnished by - Kentucky Utilities Company, Lexington, Kentucky

Company serving Gallatin County, Owen County RECC

Source of power - East Kentucky Power Cooperative

Total generating capacity - 515,000 KW

Industrial rates furnished by - Owen County RECC, Owenton, Kentucky

### Natural Gas

Company serving Warsaw and Glencoe - Union Light, Heat and Power Company

Source of supply - Kentucky Gas Transmission Corporation

Size of transmission lines - 4 and 6 inches

Distribution lines - 2 to 4 inches

BTU content - 1,020; Specific gravity - 0.60

Distribution pressure - 4 ounces to 60 psig

Rates: Furnished upon request by the Union Light, Heat and Power Company, Covington, Kentucky, a subsidiary of the Cincinnati Gas and Electric Company, Post Office Box 960, Cincinnati, Ohio.

Sparta does not have natural gas service. Manufactured gas is available from several distributors.

## WATER AND SEWERAGE

### Water

Company serving Warsaw - Warsaw Water Works

Source - 2 artesian wells

Treatment plant capacity - 300,000 gpd

Average daily consumption - 115,000 gallons

Peak daily consumption - 123,700 gallons

Type treatment - chlorination

Storage capacity - 150,000 gallons

Average pressure - 46 to 50 psi; Average temperature - 52 degrees

Size mains - 2, 4, 6, and 12 inches

#### MONTHLY WATER RATES FOR WHOLESALE AND INDUSTRIAL CONSUMERS

First	2,000 gallons	\$2.75 (minimum)
Next	8,000 gallons	.80 per 1,000 gallons
Next	10,000 gallons	.70 per 1,000 gallons
Next	20,000 gallons	.60 per 1,000 gallons
Next	40,000 gallons	.50 per 1,000 gallons

Company serving Glencoe and Sparta - Tri-Village Water District

Source - 3 lakes

Treatment plant capacity - 750,000 gpd

Average daily consumption - 350,000 gallons

Peak daily consumption - 498,000 gallons

Type treatment - sedimentation, filtration, chlorination

Storage capacity - 175,000 gallons

Average pressure - 50 psi; Average temperature - 55 degrees

Size mains - 2, 4, and 6 inches

#### MONTHLY WATER RATES FOR WHOLESALE AND INDUSTRIAL CONSUMERS

Rate C:	First	1,250 gallons	\$4.50
	Next	3,750 gallons	1.40 per 1,000 gallons
	Over	5,000 gallons	1.00 per 1,000 gallons
Rate B:	First	6,000 gallons	\$7.50
	Next	4,000 gallons	1.00 per 1,000 gallons
	Over	10,000 gallons	.85 per 1,000 gallons
Rate A:	First	25,000 gallons	\$20.00
	Over	25,000 gallons	.70 per 1,000 gallons



Surface water sources - Ohio River and Eagle Creek

Average discharge - Ohio River at Cincinnati 96,810 cfs (23-year record, USGS)

Expected ground water yield - 500 to 1,000 gpm along Ohio River;

5 to 50 gpm along Kentucky River and Eagle Creek; 5 gpm or less in remainder of county

### Sewerage

Company serving Warsaw - Warsaw Water Works

Design population - 1,600

Average daily flow - 40,000 gallons

Type treatment - lagoon

Treated effluent discharged into - Craigs Creek

Size of sanitary mains - 8 inches

Size of storm mains - 8, 10, and 12 inches

Rates - 50 percent of monthly water bill

Glencoe and Sparta - Septic tanks are being utilized in Glencoe and Sparta at this time.

## LOCAL GOVERNMENT

### City (Warsaw)

Structure - Mayor - 4-year term; 6 councilmen - 2-year terms  
Budget 1970 - General Fund \$40,000; Water and Sewer Fund \$41,000  
Fees and licenses - Business license fees range from \$5 to \$175 annually in Warsaw.

### County

Structure - County Judge - 4-year term; 5 magistrates - 4-year terms  
Budget 1970-71 - General Fund \$85,115; Road Fund - \$52,840

### Assessed Value of Property - 1970

<u>Classes of Property*</u>	<u>Warsaw</u>	<u>Glencoe</u>	<u>Sparta</u>	<u>Gallatin County</u>
Real Estate and Tangibles	\$5,655,120			
Real Estate Tangibles		\$732,115	\$538,540	\$17,465,601
Public Service		123,662	268,797	5,111,482
				4,800,397

### Local General Property Tax Rates Per \$100 of Assessed Valuation - 1970 <sup>12/</sup>

<u>Taxing Unit**</u>	<u>Warsaw</u>	<u>Glencoe</u>	<u>Sparta</u>	<u>Gallatin County</u>
State	\$ .015	\$ .015	\$ .015	\$ .015
County	.171	.171	.171	.171
School	.523	.523	.523	.523
City	.260	.300	.300	
Total	\$ .969	\$1.009	\$1.009	\$ .709

\*Property assessed at 100 percent of fair value.

\*\*Manufacturing machinery, raw materials inventories and goods in process inventories are not subject to local tax. State rate is only \$0.15 per \$100.



## Safety

<u>Police</u>	<u>Warsaw</u>	<u>Glencoe</u>	<u>Sparta</u>	<u>Gallatin County</u>
Total staff	2	1	1	2
Radio-patrol cars	1			1

## Fire

American Insurance  
Association Fire

Rating	7			
Volunteers	25	15		25

### Equipment:

750 gpm pumpers	1	1		
500 gpm pumpers	1	1		1
350 pumper	1			
utility trucks	1			2
other				jeep for grass fires

## Rescue Service

Gallatin County Rescue Squad

Number of volunteers - 25

Equipment - ambulance, jeep, fire truck, truck and U.S. Army Duck

Personnel training - first aid

## Sanitation

	<u>Warsaw</u>	<u>Glencoe</u>	<u>Sparta</u>	<u>Gallatin County</u>
Type service	private	private	municipal	private
Cost:				
residential	\$2 monthly	\$2 monthly		contract
business	\$3 monthly	\$3 monthly		contract
Collection frequency:				
residential	once weekly	once weekly	once weekly	when desired
business	twice weekly	once weekly	once weekly	when desired
Trash pickup	once weekly	once weekly	once weekly	when desired
Disposal method	land fill	land fill	land fill	land fill

## HEALTH

### Hospitals

<u>General Hospital</u>	<u>Location</u>	<u>Beds</u>
Carroll County Memorial Hospital	Carrollton, 17 miles	39
General hospital facilities - operating room, emergency room, X-ray, pathology equipment, laboratory, OB section, blood bank, and physical therapy		
Medical staff - 6 doctors, 10 registered nurses, 3 graduate licensed practical nurses		

### Nursing Homes

	<u>Location</u>	<u>Distance</u>	<u>Beds</u>
Extended Care Home	Carrollton	17 miles	27

### Public Health

Facility - Gallatin County Health Department

Staff - sanitarian, nurse, doctor, clerk

Budget 1970-71 - \$18,071



## OTHER LOCAL FACILITIES

### Communications

	<u>Warsaw</u>	<u>Glencoe and Sparta</u>
Telephone -	The Cincinnati Bell, Inc.	The Cincinnati Bell, Inc.
Services -	standard	standard
Telegraph -	no local service	no local service
Services -	phone to Carrollton	phone to Carrollton
Postal -		
U. S. Post Office		
Class -	second	third
Mail received -	twice daily	once daily
Mail dispatched -	twice daily	once daily
Newspapers -	Gallatin County News (published in Warsaw)	
Weekly and circulation -	1,900	
Other papers received from -	Cincinnati, Ohio; Louisville and Lexington, Kentucky	Cincinnati, Ohio; Louisville, Lexington, and Warsaw, Kentucky
Radio -		
Stations received from -	Cincinnati, Ohio; Louisville, Lexington, Covington, and Carrollton, Kentucky	Cincinnati, Ohio; Louisville Lexington, Covington, and Carrollton, Kentucky
Television -		
Reception from -	Cincinnati, Ohio; Louisville, Kentucky	Cincinnati, Ohio; Louisville, Kentucky
Kentucky Educational Television -	Owenton transmitter Channel 52	Owenton transmitter Channel 52

### Religious Institutions

Number of churches in Gallatin County - 6

Denominations - Baptist, Christian, Catholic, Methodist, Church of Christ, Pentecostal

### Financial Institutions

<u>Bank</u>	<u>Statement as of December 31, 1970</u>	
	<u>Assets</u>	<u>Deposits</u>
Farmers State Bank, Warsaw	\$3,574,982	\$3,125,806
Sparta-Sanders Bank, Sparta	2,687,335	2,531,693

### Hotels and Motels

Number - 3

Units - 25

### Clubs and Organizations

#### Warsaw

Business and Civic - Lions, Ministerial Association, PTA, Jaycees

Fraternal - American Legion, Masonic Lodge, VFW

Women's - Woman's Club, Homemakers, Eastern Star

Youth - Boy Scouts, FFA, FHA, 4-H, FTA, Beta Club

Other - Gallatin County Fish and Game Club, Coon Hunters



## RECREATION

### Local

#### Warsaw

##### Public Recreation Facilities

- Playground - 1
- Tennis court - 1
- Baseball diamond - 1
- Other - 3 boat docks, 2 boat ramps

##### Tourist Attractions

- Regional United Outboard Powerboat Association, races each August;
- Markland Dam; Water Festival, ferry ride across the Ohio River

### Area (Within 50 miles)

Cincinnati, Ohio, offers concerts, lectures, theaters, operas, art exhibits, and all major sports activities.

General Butler Resort State Park, Big Bone Lick State Park, and Kincaid Lake State Park, are within easy driving distance.

## AGRICULTURE - NATURAL RESOURCES - CLIMATE

### Agriculture 13/

	<u>Gallatin County</u>	<u>Labor Market Area</u>
Total land area (acres)	64,000	688,560
Percent of area in farm land	89	83
Number of farms	445	4,477
Average size of farms (acres)	129	127
1964 value of all farm products	\$ 2,007,546	\$ 18,909,550
Value per farm	4,511	4,223
Total crop sales	1,457,608	12,041,343
Total livestock and livestock products	549,522	6,820,053
1968 agricultural production included:		
Burley tobacco (lbs.)	1,919,000	20,588,000
Corn (bu.)	82,000	956,000
Cattle and calves (number)	6,800	81,900
Hogs and pigs (number)	1,200	18,500
Milk production (1967) (lbs.)	10,080,000	115,585,000

### Natural Resources

Principal mineral resources	Sand and gravel
Other mineral resources	Limestone
Acres of commercial forest land	19,500 (31% of land area)
Most abundant tree species	White oak, red oak, hickory, ash, red cedar, black locust, and hard maple

### Climate 14/

	<u>Gallatin County</u>
Temperature	
Annual mean (30-year record)	53.4 degrees
Average annual 1970	54.6 degrees
Record highest August, 1962 (9-year record)	102.0 degrees
Record lowest January, 1963 (9-year record)	- 19.0 degrees
Seasonal heating degree-days (30-year record)	5,265
Precipitation	
Mean annual total (30-year record)	38.02 inches
Mean annual snow and sleet (23-year record)	24.0 inches
Total precipitation 1970	40.81 inches
Mean number days precipitation (.01 inches or more) (23-year record)	128
Average number days thunderstorms (23-year record)	44
Prevailing wind (16-year record) - South-southwest	



## HISTORY

Gallatin County, the thirty-third county made in the state, dates from 1798. It was taken from Franklin and Shelby Counties. Several years after its establishment portions of Gallatin County were given up to help form three additional counties: Owen in 1819, Trimble in 1836, and Carroll in 1838. Gallatin borders on the Ohio River for several miles on its northwestern side. Since the Kentucky state line follows the northern or Indiana shore line of the river, there have been slight fluctuations in Gallatin County's size caused by sand bars filling in or by washing away.

The surface of Gallatin County is generally hilly, and is influenced by the escarpment which separates the higher ground from the Ohio River Flood Plain. The soil is usually productive, especially in the river and creek bottoms.

Gallatin County was named for Albert Gallatin, American statesman and financier who became a member of the United States Senate before he reached his fortieth birthday.

Warsaw, the county seat, is located on the Ohio River in a beautiful and highly productive valley. It was settled around 1800 and was called "The Ohio River Landing." Later, it was called Fredericksburg in honor of the most energetic and enterprising townsman, Adolph Frederick. In 1831, the name was changed again due to the fact that another town had a similar name. Captain John Blair Summons suggested the name "Warsaw" after the book entitled, Thaddeus Warsaw.

Warsaw was once a prominent river port. Today it depends on its position as the county seat and a rural trading center for a livelihood.

Other towns in the county include Sparta, Glencoe, and Napoleon. Sparta was once famous for fine beverages, Glencoe prospered as a railroad town, and Napoleon, once prosperous to the degree of being incorporated by the state legislature in 1841, reached the peak of its importance a hundred years ago, then slowly declined.

## SOURCES OF INFORMATION

- 1/ U.S. Department of Commerce, Bureau of the Census, Census of Population, 1950, 1960, 1970.
- 2/ Kentucky Department of Economic Security, Division of Research and Statistics.
- 3/ Kentucky Department of Economic Security, Number of Workers in Manufacturing Industries Covered by Kentucky Unemployment Insurance Law Classified by Industry and County, June 1970, June 1960.
- 4/ Kentucky Department of Commerce, 1971 Kentucky Directory of Manufacturers.
- 5/ Kentucky Department of Economic Security, Division of Employment Services, Covington Office.
- 6/ Kentucky Department of Economic Security, Kentucky Labor Supply Estimates by County, January 1970.
- 7/ Kentucky Department of Commerce, Future Labor Supply by 1977.
- 8/ University of Kentucky, Office of Development Services and Business Research, Total Personal Income for Kentucky.
- 9/ University of Kentucky, Office of Development Services and Business Research, Per Capita Income in Kentucky.
- 10/ Louisville & Nashville Railroad, Louisville, Kentucky.
- 11/ Lee Way Motor Freight, Inc., Oklahoma City, Oklahoma.
- 12/ Kentucky Department of Revenue, Research Division.
- 13/ U.S. Department of Commerce, Bureau of the Census, Census of Agriculture, 1964. U.S. Department of Agriculture and Kentucky Department of Agriculture, Kentucky Agricultural Statistics, 1969.
- 14/ U.S. Department of Commerce, Environmental Science Services Administration, Climatological Data, 1969.

All other information was obtained from governmental offices, local businesses and organizations.

This copy has been prepared by the Kentucky Department of Commerce,  
Division of Research and Planning, and the cost of printing paid from  
state funds.