

1970

Industrial Resources: Graves County - Mayfield

Kentucky Library Research Collections
Western Kentucky University, spcol@wku.edu

Follow this and additional works at: https://digitalcommons.wku.edu/graves_cty

 Part of the [Business Administration, Management, and Operations Commons](#), [Growth and Development Commons](#), and the [Infrastructure Commons](#)

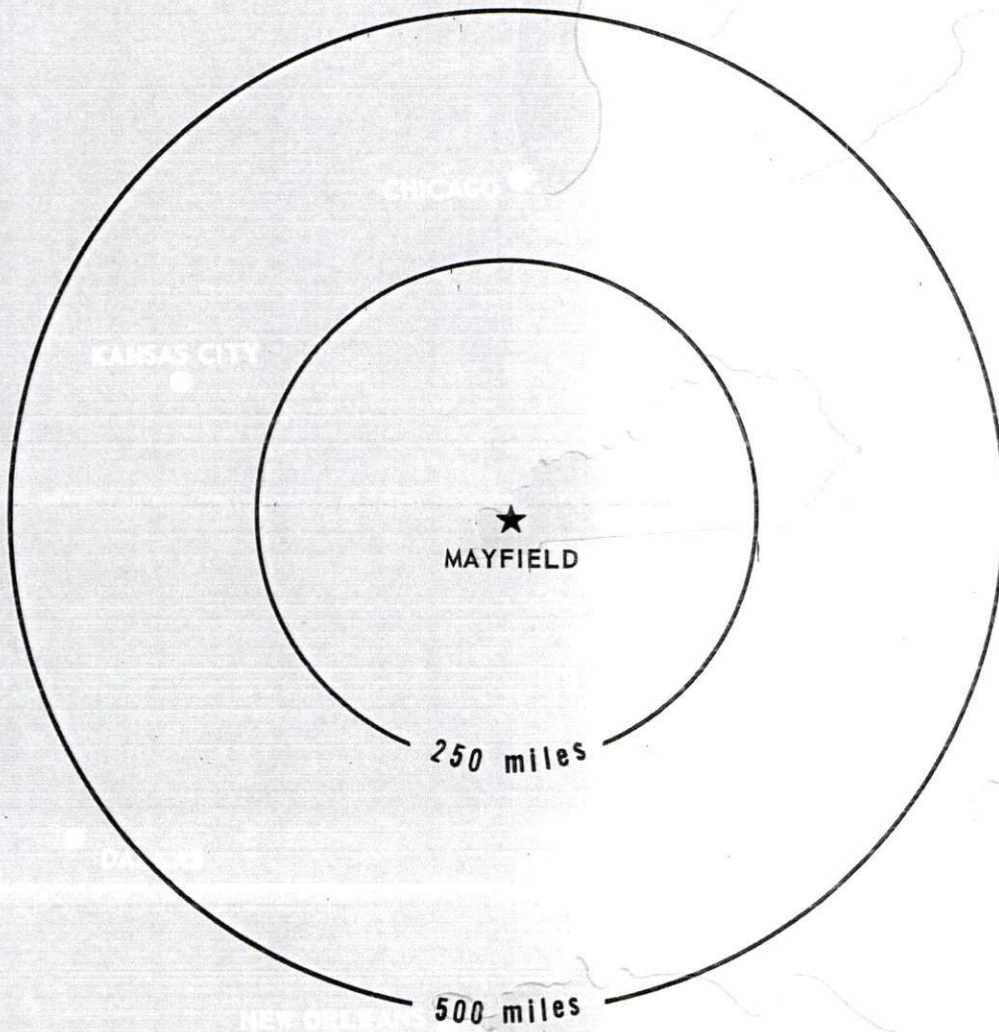
Recommended Citation

Kentucky Library Research Collections, "Industrial Resources: Graves County - Mayfield" (1970). *Graves County*. Paper 12.
https://digitalcommons.wku.edu/graves_cty/12

This Report is brought to you for free and open access by TopSCHOLAR®. It has been accepted for inclusion in Graves County by an authorized administrator of TopSCHOLAR®. For more information, please contact topscholar@wku.edu.

INDUSTRIAL RESOURCES

MAYFIELD, KENTUCKY



MAYFIELD INDUSTRIAL SITES

1970

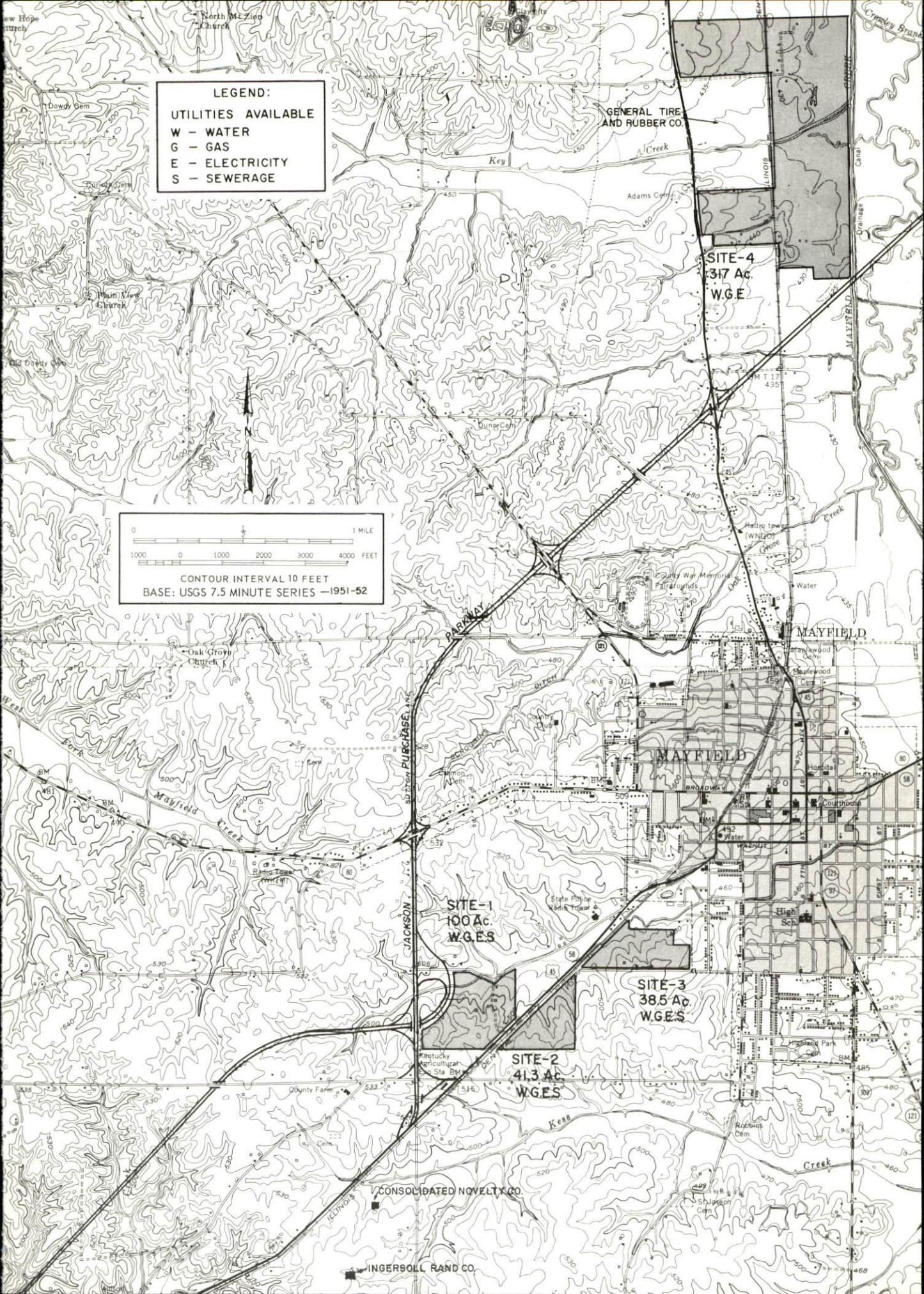
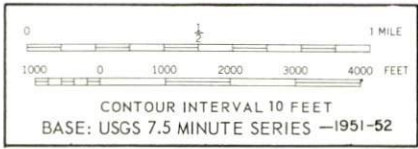
MAYFIELD INDUSTRIAL SITES

1970

For further information concerning the following sites, contact Mr. Larry Winders, Mayfield-Graves County Chamber of Commerce, Mayfield, Kentucky; or the Kentucky Department of Commerce, Frankfort, Kentucky.

- SITE # 1: ACREAGE AND TOPOGRAPHY: 100 acres, gently rolling
LOCATION: Within south city limits of Mayfield
ZONING: Commercial
HIGHWAY ACCESS: Jackson Purchase Parkway and interchange on western boundary of site, U.S. Highway 45 forms southeast boundary. Access to site via U.S. 45.
RAILROADS: Illinois Central Railroad follows U.S. 45 along southeast boundary of site.
WATER: Mayfield Electric and Water System
SIZE LINE: 12-inch
GAS: Western Kentucky Gas Company
SIZE MAIN: 4-inch
ELECTRICITY: Mayfield Electric and Water System
SEWERAGE: Mayfield Electric and Water System; 10-inch main
OWNERSHIP: Industrial Development Board, Mayfield-Graves County Chamber of Commerce
- SITE # 2: ACREAGE AND TOPOGRAPHY: 41.3 acres, gently rolling
LOCATION: Within southern city limits
ZONING: Light industrial
HIGHWAY ACCESS: Partially paved - partially unimproved access road to South 10th Street.
RAILROADS: Illinois Central Railroad forms western boundary of site
WATER: Mayfield Electric and Water System
SIZE LINE: 12-inch
GAS: Western Kentucky Gas Company
SIZE MAIN: 4-inch
ELECTRICITY: Mayfield Electric and Water System
SEWERAGE: Mayfield Electric and Water System
OPTIONED BY: Industrial Development Board, Mayfield-Graves County Chamber of Commerce
- SITE # 3: ACREAGE AND TOPOGRAPHY: 38.5 acres, gently rolling
LOCATION: Within southern city limits
ZONING: Light industrial
HIGHWAY ACCESS: Partially paved - partially unimproved access road to South 10th Street
RAILROADS: Illinois Central Railroad forms western boundary of site.
WATER: Mayfield Electric and Water System
SIZE LINE: 12-inch
GAS: Western Kentucky Gas Company
SIZE MAIN: 4-inch
ELECTRICITY: Mayfield Electric and Water System
SEWERAGE: Mayfield Electric and Water System
OPTIONED BY: Industrial Development Board, Mayfield-Graves County Chamber of Commerce
- SITE # 4: ACREAGE AND TOPOGRAPHY: 317 acres, level to gently rolling
LOCATION: 1.5 miles north of city limits on U.S. 45
ZONING: None
HIGHWAY ACCESS: Fronts on U.S. 45; access onto site via partially paved - partially unimproved access road; Jackson Purchase Parkway approximately 0.5 miles distant via U.S. 45.
RAILROADS: Illinois Central Railroad on site
WATER: Hickory Water District
SIZE LINE: 8-inch
GAS: Western Kentucky Gas Company
SIZE MAIN: 6-inch
ELECTRICITY: West Kentucky RECC
SEWERAGE: Package plant necessary
OPTIONED BY: Industrial Development Board, Mayfield-Graves County Chamber of Commerce

LEGEND:
UTILITIES AVAILABLE
W - WATER
G - GAS
E - ELECTRICITY
S - SEWERAGE



CURRENT INDUSTRIAL RESOURCES

CURRENT INDUSTRIAL RESOURCES, MAYFIELD, KENTUCKY

This is a 1971 supplement to "Industrial Resources, Mayfield, Kentucky" which was published in 1970.

Population

	<u>1970</u>	<u>1960</u>
Mayfield	10,724	10,762
Graves County	30,939	30,021
Labor Market Area	148,911	137,390
(Includes Graves, Calloway, Carlisle, Hickman, Marshall, and McCracken Counties.)		

General Employment Characteristics

Industry	<u>Employment 1969</u>	
	<u>Graves County</u>	<u>Labor Market Area</u>
TOTAL	11,600	54,100
Agricultural	1,500	4,600
Nonagricultural	10,100	49,500
Manufacturing	3,500	14,399
Trade and Services	2,554	14,485
Government	1,000	9,250

Manufacturing Employment

<u>Type Industry</u>	<u>Graves County</u>			<u>Labor Market Area</u>		
	<u>1970</u>	<u>1960</u>	<u>% Change</u>	<u>1970</u>	<u>1960</u>	<u>% Change</u>
TOTAL	3,435	3,042	12.9	14,035	12,411	13.1
Food and kindred products	93	260	-64.2	1,016	798	27.3
Apparel, textiles, leather	1,517	2,380	-36.3	2,891	4,586	-37.0
Lumber & furniture	39	165	-74.4	449	323	39.0
Printing, publishing, paper	58	52	11.5	336	260	29.2
Chemicals, petroleum, coal, rubber	1,120	0	--	4,714	3,218	46.5
Stone, clay & glass	359	120	199.2	512	269	90.3
Primary metals	0	0	--	873	777	12.4
Machinery & metal products	14	14	--	2,946	2,110	39.6
Other	235	51	360.8	298	70	325.7

There are presently 38 manufacturing firms in Graves County.
Major firms, employment, and year started operations:

<u>Firms</u>	<u>Employment</u>	<u>Year Started Operations</u>
Andover Clothes, Inc.	97	1946
Consolidated Novelty Company	200	1969
Curlee Clothing Company	625	1929
Dairy Brands, Inc.	20	1932
General Concrete Products	23	1960
General Tire & Rubber Company	800	1960
Mayfield Printing Company	32	1933
Merit Clothing Company, Inc.	1,460	1899
Messenger Newspapers, Inc.	23	1900
Sikeston Ceramics, Inc.	369	1961

Labor Supply

	<u>Graves County</u>			<u>Labor Market Area</u>		
	<u>Total</u>	<u>Male</u>	<u>Female</u>	<u>Total</u>	<u>Male</u>	<u>Female</u>
Current	1,815	1,105	710	7,951	4,486	3,465
Potential additions next five years	3,317	1,725	1,592	15,983	8,090	7,893

Personal Income

Graves County, 1969: Total - \$83,658,000; Per Capita - \$2,770
1959: Total - \$39,558,000; Per Capita - \$1,373

Education

The Graves County School System includes 7 high schools with basic ratings, and 7 elementary schools.

The Mayfield Independent School District includes 1 high school with a standard rating, and 5 elementary schools.

Nearest Area Vocational Schools:

Tilgham Area Vocational School, Paducah, 25 miles

Courses offered: Nurses Aide, Practical Nursing, Surgical Technician, Distributive Education, Electronics (Technology), Highway Technology, Air Conditioning and Refrigeration, Auto Body Repair, Auto Mechanics, Carpentry, Cosmetology, Drafting, Electricity, Machine Shop, Small Engine Repair, Welding, Service Station Attendant.

West Kentucky Area Vocational School, Paducah, 25 miles
 Courses offered: General Clerical, Secretarial-Steno, Electronics
 (Communications), Auto Body Repair, Auto Mechanics, Barbering,
 Carpentry, Commercial Foods, Cosmetology, Drafting, Electricity,
 Groundskeeping and Landscaping, Masonry, Tailoring.

Power and Fuel

<u>Electric Distributors</u>	<u>Source of Supply</u>	
Mayfield Electric & Water System	Tennessee Valley Authority	
West Kentucky Rural Electric Cooperative	Tennessee Valley Authority	
<u>Natural Gas Distributor</u>	<u>Specific Gravity</u>	<u>Btu Per Cu. Ft.</u>
Western Kentucky Gas Company	.60	1,018

Water and Sewerage

Water: Mayfield Electric and Water System - Daily treatment capacity - 2,880,000 gallons; average daily use - 1,056,500 gallons, maximum daily use - 1,549,000 gallons; storage capacity - 1,240,000 gallons; size distribution lines - 12, 10, 8, 6, 4 and 2 inches.

Hickory Water District - Treatment capacity - 365 gallons per minute; average daily use - 100,000 gallons, maximum daily use - 120,000 gallons; storage capacity - 225,000 gallons; size distribution lines - 4, 6, and 8 inches.

Sewerage: Type treatment - activated sludge plant, drying beds, digester, new sludge oxidation system being built; design capacity - 2,360,000 gallons per day; size of sewer mains - 3, 8, and 24 inches.

Rates - inside city - 50 percent of water bill; outside city - 100 percent of water bill; minimum - \$1.50 monthly.

Local Government

Business license - \$10 to \$1,000 annually; Occupational license tax - individuals - 1 percent of gross wages

Property Tax Rates

Property tax rates per \$100 of assessed valuation, 1970:

	<u>Mayfield</u>	<u>Graves County</u>
State	.015	\$.015
County	.170	.170
School	.690	.323
City	.340	
Total	\$1.215	\$.508

Police Protection: Number of law enforcement officers - 28 (city);
7 (county).

Fire Protection: Number of full-time firemen - 34; American Insurance
Association fire rating, City of Mayfield, Class 6.

Industrial Sites

Sites shown on the 1970 Mayfield industrial site map remain available for
industrial use.

INDUSTRIAL RESOURCES

MAYFIELD, KENTUCKY

Prepared by

The Kentucky Department of Commerce

in cooperation with

The Mayfield-Graves County Chamber of Commerce

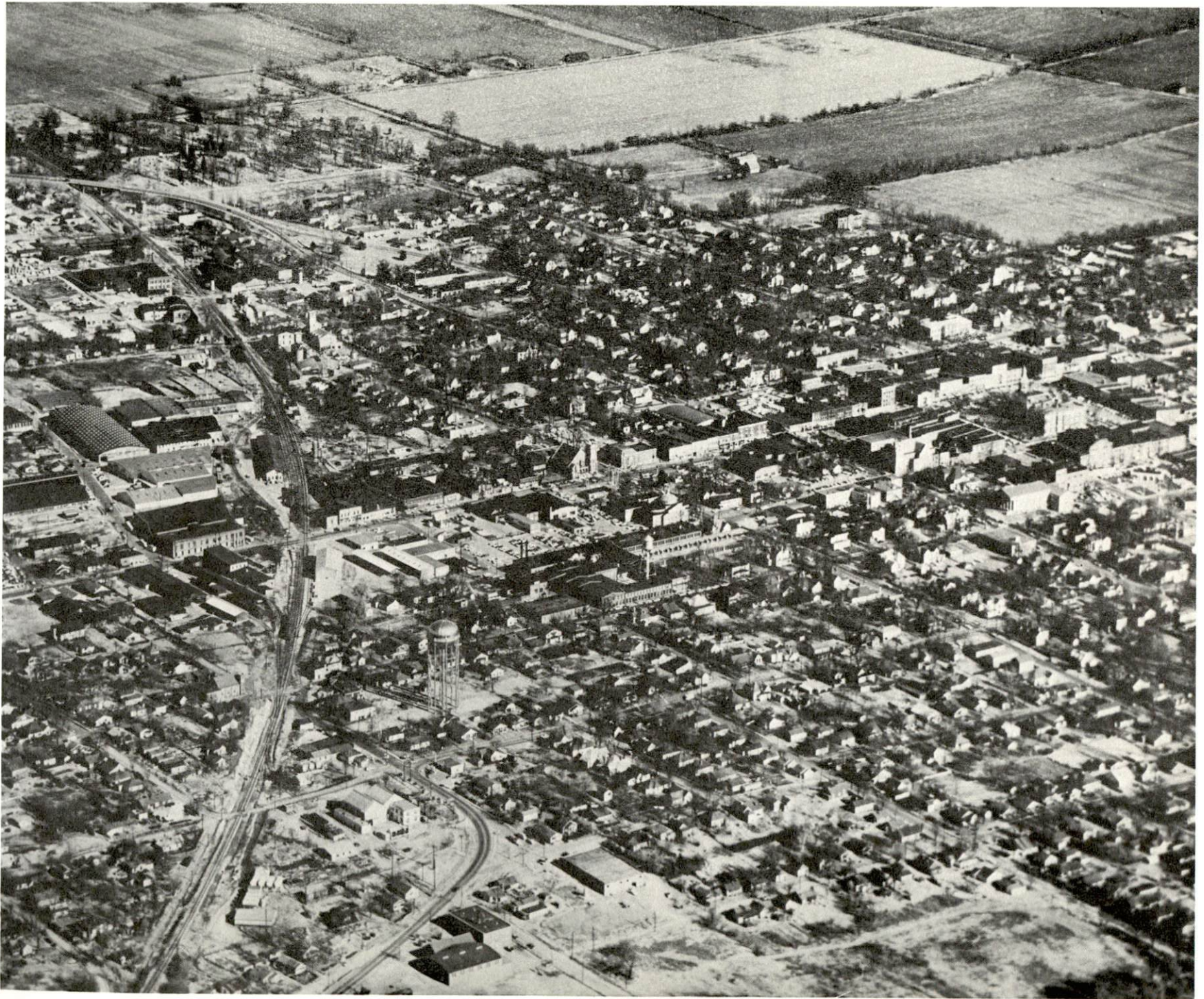
1970

This copy has been prepared by the Kentucky Department of Commerce,
Division of Research and Planning, and the cost of printing paid from
state funds.

TABLE OF CONTENTS

Chapter	Page
INDUSTRIAL SITES	i
MAYFIELD, KENTUCKY - A RESOURCE PROFILE	1
THE LABOR MARKET	5
Population Trends	5
General Employment Characteristics, 1969	5
Manufacturing Employment Trends by Industry	6
Mayfield Manufacturing Firms, Their Products and Employment	6
Wage Rates for Selected Occupations	8
Labor Organizations	8
Current and Future Labor Supply	9
Total Personal Income	9
Per Capita Personal Income	9
EDUCATION	10
Public Schools	10
Parochial, Private and Special Schools	10
Vocational Schools	12
Colleges and Universities	12
TRANSPORTATION	13
Rail	13
Truck Service	13
Air	14
Bus	14
Taxi	14
POWER AND FUEL	15
Electricity	15
Natural Gas	15
WATER AND SEWERAGE	16
Water	16
Sewerage	18

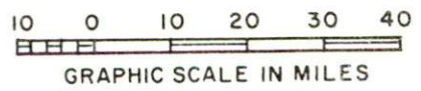
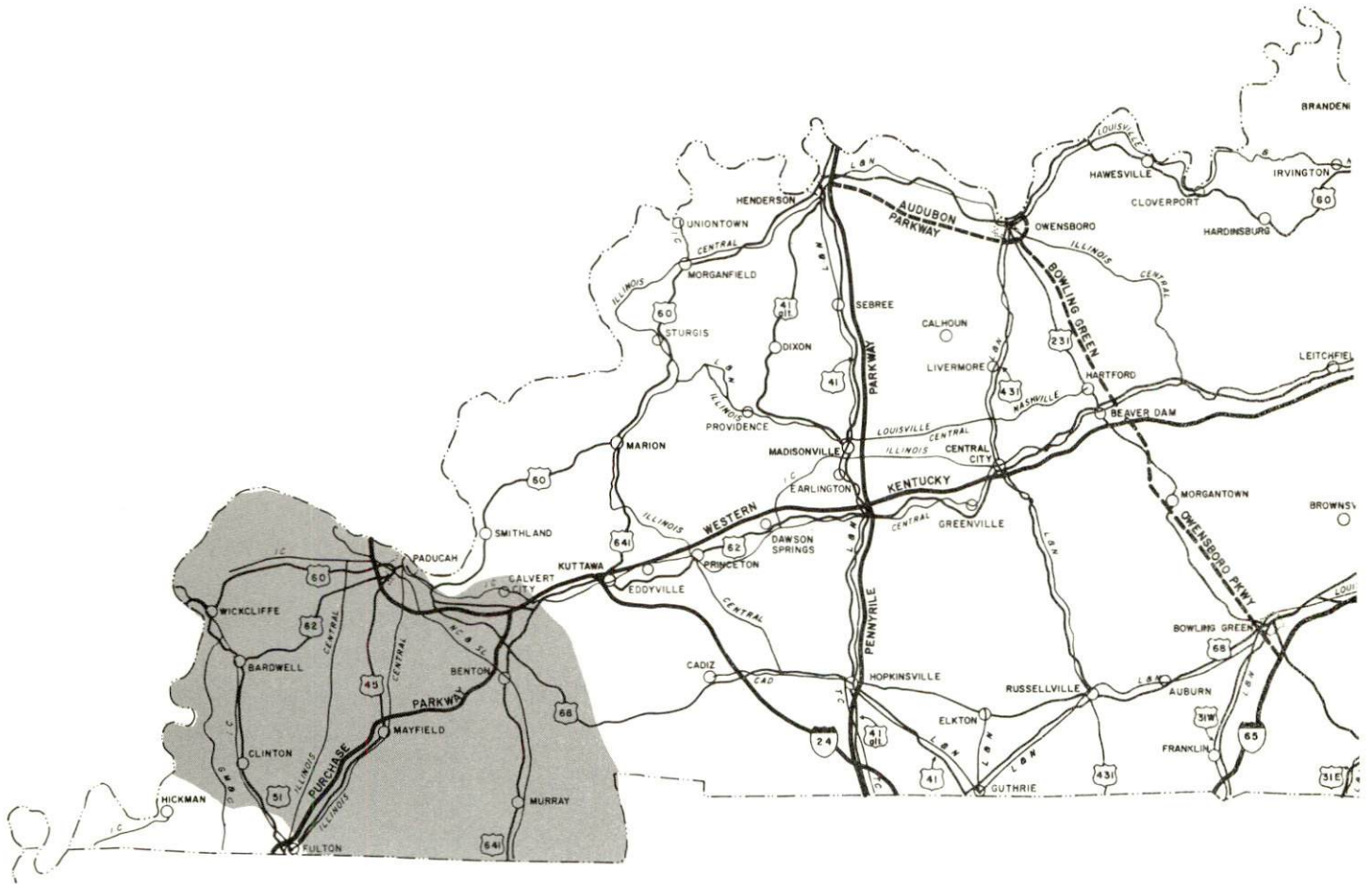
<u>Chapter</u>	<u>Page</u>
LOCAL GOVERNMENT	19
City	19
County	19
Assessed Value of Property, 1969	19
Local General Property Tax Rates Per \$100 of Assessed Valuation, 1969.	19
Planning and Zoning	20
Safety	20
Police	20
Fire	20
Rescue Service	20
Sanitation	21
HEALTH	22
Hospitals	22
Other	22
Nursing Homes	23
Day Care Center	23
Public Health	23
OTHER LOCAL FACILITIES	24
Communications	24
Library Services	24
Religious Institutions	26
Financial Institutions	26
Hotels and Motels	26
Clubs and Organizations	26
RECREATION	27
Local	27
Area	27
AGRICULTURE - NATURAL RESOURCES - CLIMATE	28
Agriculture	28
Natural Resources	28
Climate	28
HISTORY	29



Aerial View of Mayfield

MAYFIELD LABOR MARKET AREA

*Shaded area denotes labor market area



MAYFIELD, KENTUCKY - A RESOURCE PROFILE

Location

Mayfield, the county seat of Graves County, is the geographic center of the eight-county western Kentucky region called the Jackson Purchase. Resembling the spokes of a wheel, U.S. Highway 45 and seven state routes meet at Mayfield, which has aptly been called the "Hub of the Purchase." The Purchase Parkway, now completed, links Mayfield with the Western Kentucky Parkway, 30 miles to the northeast, giving Mayfield an excellent market to the east and other parts of the nation.

Within 50 miles of Mayfield are the huge lakes, mighty rivers and numerous streams that characterize Kentucky's southwest corner, the Western Waterlands.

The Economic Framework

Total employment in Graves County averaged 11,600 in 1969 with manufacturing providing 3,500 of these jobs. During the first nine years of the decade manufacturing increased by approximately 22 percent. Major industrial products are men's suits, sport coats, top coats and slacks; rubber tires; ceramic containers and lamp bases.

Per capita income in the county in 1968 was \$2,389 and ranked 29th among the state's 120 counties.

Mayfield is the hub of a labor market area that includes Graves and five surrounding Kentucky counties. Area employment totals approximately 54,100 including 4,600 in agriculture. Manufacturing furnishes 14,400 jobs. Area industrial employment has increased by almost 20 percent since 1959 with sharpest gains in the chemical, rubber, machinery and primary metal industries.

Resources for Growth

1. There is a current estimated labor supply of 4,060 men and 3,250 women available for industrial jobs in the labor market area plus those who would commute from the two adjoining Tennessee counties. By 1976, 6,800 young men and 6,340 young women will become 18 years of age and potentially available for work.

2. The local transportation capability is good. The Illinois Central Railroad serves Mayfield with a variety of services. The city is now easily accessible via the Kentucky Parkway System with the recent completion of the Purchase Parkway which bypasses Mayfield on the north and west sides. Seven state highways and U.S. Highway 45, which traverse the Purchase area in all directions, connect at Mayfield. In addition to the local airport, there is a paved runway at both of the nearby state parks and commercial service is available at Paducah, 25 miles distant. Mayfield is within 40 miles of three main inland waterways - the Mississippi, Ohio, and Cumberland Rivers. All lend themselves to navigation for movement of barge traffic.

3. Energy - Gas is provided by the Western Kentucky Gas Company and electricity, generated by the Tennessee Valley Authority, is provided by the Mayfield Electric System. There is an ample supply of water from four municipally-owned deep wells.

4. Mayfield has four available industrial sites totaling 496.8 acres.

5. Education is an important growth asset for Mayfield. Murray State University, 21 miles distant, is a multi-purpose coeducational institution which seeks to provide opportunities in higher education that meet the needs and interests of the people of the Jackson Purchase. The University is organized into six schools: The Schools of Applied Science and Technology, Arts and Sciences, Business, Education, Fine Arts and the Graduate School. Preprofessional curricula are also provided in medicine, dentistry, forestry, veterinary medicine, optometry, engineering, medical technology, pharmacy and law.

A community college of the University of Kentucky and two area vocational schools, which offer courses in a total of 26 fields, are located at Paducah.

Community Programs for Improvement

Mayfield's designation as a 1969 All Kentucky City is evidence of the city's growth and energetic citizen interest in the community. Among the recent public and private improvements are the following:

1. The Mayfield Shopping Plaza, comprised of 17 units, recently opened.

2. As a result of a design and improvement study of the downtown area, 22 businesses renovated the facings of their buildings in 1969. Eleven more businesses will have completed similar renovation by December 1970.

3. The Purchase Parkway was completed in 1968, U.S. Highway 45 at Mayfield is being four-laned, and 15 miles of county roads have been resurfaced this year. In 1971, through county and state efforts, 40 miles of roadway will be resurfaced and 32 miles of roadway constructed.

4. The city has completed its second fire station and a third is under construction.

5. A \$2 million water and sewerage expansion project is 50 percent completed.

6. A \$350,000 civic center and a new city hall are being planned.

7. A mental health-mental retardation center has recently been established in a spacious new \$400,000 building made available by the J. U. Kevil Foundation. Both divisions of the center have excellent staffs and complete facilities available to those in the congressional district.

8. The Annie Gardner Foundation, recently established, distributes the proceeds from the Annie Gardner estate to those citizens of Graves County in need of clothing and food.

9. A contract for the architectural design of a new high school in the Mayfield School System has been signed.

10. The development of playground and recreational facilities adjacent to the Purchase Fairgrounds is partially completed. Four lighted, fenced little league fields and an adult softball field have been built.

Recreation, Entertainment and Livability

Mayfield, located at the center of the Western Waterland, is the heart of a region which is characterized by traditional Southern hospitality and every kind of enchanting vacation opportunity. Two huge lakes in the region - Lake Barkley and Kentucky Lake - offer complete water recreation facilities, and the 170,000-acre wilderness between these lakes is currently being developed into one of the greatest family vacation areas in America. Within 50 miles of Mayfield are three state parks which offer a variety of activities including a summer theater program.

Murray State University, 21 miles southeast of Mayfield, offers collegiate sports excitement and cultural entertainment to the Purchase region. Paducah is 25 miles distant, and Nashville and Memphis are within 4 hours driving time, making available additional cultural activities and entertainment media.

Mayfield is the location of:

*one of the world's largest loose leaf tobacco markets ---

*one of the nation's largest manufacturers of men's clothing ---

*the world's largest ball clay deposit, used for ceramics and china throughout the world ---

*the annual Purchase District Fair, one of the largest fairs in the state.

THE LABOR MARKET

POPULATION TRENDS ^{1/}

	Population			Percent Change	
	1970	1960	1950	1960-70	1950-60
Mayfield	10,948	10,762	8,990	+ 1.7	+ 19.7
Labor Market Area	147,260	137,390	128,019	+ 7.2	+ 7.3
Graves County	30,745	30,021	31,364	+ 2.4	- 4.3
Calloway County	27,206	20,972	20,147	+ 29.7	+ 4.1
Carlisle County	5,230	5,608	6,206	- 6.8	- 9.6
Hickman County	5,874	6,747	7,778	- 12.9	- 13.3
Marshall County	19,639	16,736	13,387	+ 17.3	+ 25.0
McCracken County	58,571	57,306	49,137	+ 2.2	+ 16.6

GENERAL EMPLOYMENT CHARACTERISTICS, 1969^{2/}

Major Employment Group	Employment	
	Graves County	Labor Market Area
TOTAL	11,600	54,100
Agricultural	1,500	4,600
Nonagricultural	10,100	49,500
Manufacturing	3,500	14,399
Trade and Services	2,488	13,987
Government	1,000	9,250

MANUFACTURING EMPLOYMENT TRENDS BY INDUSTRY
SEPTEMBER 1959 AND 1969^{3/}

Industry	Graves County			Labor Market Area		
	1969	1959	% Change	1969	1959	% Change
TOTAL	3,814	3,118	+ 22.3	14,637	12,230	+ 19.7
Food & Kindred Products	88	266	- 66.9	960	796	+ 20.6
Apparel, Textiles, Leather	1,860	2,462	- 24.5	3,453	4,560	- 24.3
Lumber & Furniture	41	180	- 77.2	372	340	+ 9.4
Printing, Publishing, Paper	55	51	+ 7.3	365	246	+ 48.4
Chemicals, Petroleum, Coal, Rubber	1,047	0		4,675	3,115	+ 50.1
Stone, Clay & Glass	444	118	+ 276.3	588	265	+ 121.9
Primary Metals	0	0		882	287	+ 207.3
Machinery & Metal Products	12	20	- 40.0	2,991	2,580	+ 15.9
Other	267	21	+ 1171.4	351	41	+ 756.1

MAJOR MAYFIELD MANUFACTURING FIRMS,
THEIR PRODUCTS AND EMPLOYMENT^{4/}

Firm	Product	Employment		
		Total	Male	Female
Andover Clothes, Inc.	Men's clothing	97	15	82
Consolidated Novelty Co.	Christmas decorations	200	50	150
Curlee Clothing Co.	Men's suits, coats	625	90	535
Dairy Brands, Inc.	Dairy products	36	32	4
General Concrete Products	Ready mixed concrete, concrete block	23	22	1
General Tire and Rubber Co.	Tires	800		
Ingersoll Rand Co.	Centrifugal compressors for plant air	250 (projected for 1971)		
Mayfield Printing Co.	Job printing	32	25	7
Merit Clothing Co., Inc.	Men's suits, sport coats, topcoats, slacks	1,460	310	1,150
Messenger Newspaper, Inc.	Newspaper	23	8	15
Sikeston Ceramics, Inc.	Ceramic containers, lamp bases	369	161	208



Merit Clothing Company



General Tire &
Rubber Company



Curlee Clothing Company

WAGE RATES FOR SELECTED OCCUPATIONS
MAYFIELD, KENTUCKY 5/

<u>Classification</u>	<u>Starting</u>	<u>Wages Per Hour</u>	
		<u>Maximum</u>	<u>Prevailing</u>
<u>Production Employees</u>			
Assembler	\$1.60	\$3.00	\$2.50
Inspector	1.60	3.25	2.65
Production Laborer	1.60	2.75	2.00
Welder, Arc or Acetylene (Class-A)	1.60	4.00	2.75
<u>Service Employees</u>			
Electrician (Class-A)	\$1.60	\$4.75	\$2.75
Laborer	1.60	3.25	2.00
Machinist	1.60	4.50	3.00
Mechanic, Maintenance	1.60	4.50	3.00
Truck Driver, Industrial (Class-A)	1.60	3.00	2.00
<u>Office Employees</u>			
Bookkeeper	\$1.60	\$2.50	\$1.80
File Clerk	1.60	2.00	1.75
Receptionist	1.60	2.00	1.80
Secretary	1.60	2.25	1.90
Typist	1.60	2.00	1.70

LABOR ORGANIZATIONS

<u>Union</u>	<u>Representing workers at:</u>
United Rubber Workers	General Tire and Rubber Company
Electrical Workers (IBEW)	Greer Neon Company
Amalgamated Clothing Workers of America	Merit Clothing Company
Teamsters	Dairy Brands, Inc.

CURRENT AND FUTURE LABOR SUPPLY
MAYFIELD LABOR MARKET AREA

County	Current Labor Supply 1970 ^{6/}			Future Labor Supply by 1976 (Becoming 18 Years of Age) ^{7/}		
	Total	Male	Female	Total	Male	Female
Labor Market Area	7,317	4,060	3,257	13,152	6,806	6,346
Graves County	1,665	1,026	639	2,608	1,347	1,261
Calloway County	1,509	719	790	1,586	816	770
Carlisle County	606	374	232	468	242	226
Hickman County	291	171	120	621	344	277
Marshall County	1,841	932	909	1,868	944	924
McCracken County	1,405	838	567	6,001	3,113	2,888

TOTAL PERSONAL INCOME ^{8/}

Area	1968	1959	% Change
Graves County	\$ 73,902,000	\$ 39,558,000	+86.8
Labor Market Area	391,753,000	224,313,000	+74.7
Kentucky	8,516,000,000	4,655,000,000	+82.9

PER CAPITA PERSONAL INCOME ^{9/}

Area	1968	1959	% Change
Graves County	\$2,389	\$1,373	+74.0
Labor Market Area	\$ 2,026 to 3,571	\$ 1,069 to 2,187	+89.5 to +63.3
Kentucky	2,645	1,552	+70.4

EDUCATION

Public Schools

	<u>Mayfield</u>	<u>Graves County</u>
Total Enrollment	2,131	4,228
Elementary	1,285	3,019
High School	846	1,209
Student-Teacher Ratio	20-1	27-1
Elementary	20-1	
High School	21-1	
State Rating of High School	Standard (1)	Basic (7)
Other Accreditations	Southern Association of Colleges and Schools	
Percent High School Graduates to College	62.6	40.6
Current Expenditures Per Pupil	\$385.35	\$377.55
Bonded Indebtedness, June 30, 1970	\$557,000	\$709,000

Parochial, Private and Special Schools

	<u>Parochial</u>
Total Enrollment	123
Elementary	123
Student-Teacher Ratio	25-1
Elementary	25-1



Mayfield High School



East College Elementary School

Vocational Schools

Nearest Area Schools

<p>Location Miles Distant Curriculum</p>	<p>Tilghman Area Vocational School Paducah 25 Nurse Aide Practical Nursing Surgical Technician Ward Clerk Distributive Education Electronics (Technology) Highway Technology Air Conditioning & Refrigeration Appliance Repair Auto Body Repair Auto Mechanics Carpentry Cosmetology Drafting Electricity, Machine Shop Small Engine Repair Welding</p>	<p>West Kentucky Area Vocational School Paducah General Clerical Secretarial-Steno Electronics (Communications) Auto Body Repair Auto Mechanics Barbering Carpentry Commercial Foods Cosmetology Drafting Electricity Groundskeeping & Landscaping Masonry Tailoring</p>
--	---	---

Colleges and Universities

<u>Name</u>	<u>Area - Within 50 miles</u>		<u>Highest Degree Conferred</u>
	<u>Location</u>	<u>Enrollment</u>	
Murray State University	Murray	7,055	Masters
Paducah Community College	Paducah	1,085	Associate

TRANSPORTATION

Rail

Line serving - Illinois Central Railroad

Services - Freight, switching facilities, siding space; REA Express pickup and delivery

RAILWAY TRANSIT TIME FROM MAYFIELD, KENTUCKY, TO: 10/

City	No. of Days		City	No. of Days	
	CL			CL	
Atlanta, Ga.	4		Los Angeles, Calif.	6	
Birmingham, Ala.	3		Louisville, Ky.	2	
Chicago, Ill.	2		Nashville, Tenn.	2	
Cincinnati, Ohio	3		New Orleans, La.	3	
Cleveland, Ohio	3		New York, N. Y.	5	
Detroit, Mich.	4		Pittsburgh, Pa.	4	
Knoxville, Tenn.	3		St. Louis, Mo.	3	

Truck Service

Company

A & H Truck Line, Inc.
 Henry Edwards Trucking Co.
 Harper Truck Service, Inc.
 Illinois Central Railroad Co.
 (Illinois Central Railroad
 freight only)
 McLean Trucking Co.
 Paschall Truck Lines, Inc.
 Spector Freight System, Inc.
 T.I.M.E. Freight, Inc.

Home Office

Evansville, Indiana
 Clinton, Kentucky
 Paducah, Kentucky

 Mayfield, Kentucky
 Winston-Salem, North Carolina
 Murray, Kentucky
 Chicago, Illinois
 Lubbock, Texas

HIGHWAY MILES AND TRUCK TRANSIT TIME IN DAYS FROM
MAYFIELD, KENTUCKY, TO SELECTED MARKET CENTERS

City	Highway Miles	Delivery Time <u>11/</u>		City	Highway Miles	Delivery Time	
		LTL	TL			LTL	TL
Atlanta, Ga.	475	3-4	1-2	Los Angeles, Calif.	2,036	7-9	4-6
Birmingham, Ala.	425	3-4	1-2	Louisville, Ky.	222	1-2	1
Chicago, Ill.	427	2	1	Nashville, Tenn.	221	1-2	1
Cincinnati, Ohio	355	1-2	1	New Orleans, La.	547	3-4	2
Cleveland, Ohio	599	3-4	1-2	New York, N. Y.	1,057	4-6	2-3
Detroit, Mich.	620	3-4	1-2	Pittsburgh, Pa.	621	3-4	1-2
Knoxville, Tenn.	418	2-3	1	St. Louis, Mo.	189	1-2	1

Air

	<u>Local</u>	<u>Nearest Commercial</u>
	Mayfield-Graves County Airport	Barkley Field
Location:	3 1/2 miles northeast of Mayfield	Paducah, Kentucky
Runways:	1 paved	2 paved
Length:	3,300 feet	6,500 feet; 4,000 feet
Traffic		
Control:	Wind sock	Wind tee
Lighting:	Sunrise to sunset	Beacon boundary, obstruction, runway lights and runway end identification lights
Services:	80 and 100 octane, taxi, telephone	80 and 100 octane, jet fuel, Delta and Ozark Airlines, Sun Airlines, Desoto Airlines, taxi, limousine, U-Drive-It storage, major A&E repairs

Bus

Southern Greyhound Bus Lines,
Brooks Bus Line
Western Kentucky Stages

Taxi

24-hour service

POWER AND FUEL

Electricity

Company serving Mayfield - Mayfield Electric and Water System
Source of power - Tennessee Valley Authority
Total generating capacity - 18,202,090 KW
Industrial rates negotiated by - Mayfield Electric Plant Board,
Mayfield, Kentucky

Company serving Graves County - (1) Hickman-Fulton RECC;
(2) Jackson Purchase RECC; (3) West Kentucky RECC
Source of power - (1) TVA; (2) Kentucky Utilities Company;
(3) TVA
Total generating capacity - TVA - 18,202,090 KW, Kentucky Utilities -
773,000 KW
Industrial rates negotiated by - Hickman-Fulton RECC, Hickman,
Kentucky; Jackson Purchase RECC, Paducah, Kentucky; West
Kentucky RECC, Mayfield, Kentucky

Natural Gas

Company serving - Western Kentucky Gas Company, Mayfield, Kentucky
Source of supply - Texas Gas Transmission Corporation
Size of transmission lines - 6-inch
Distribution lines - 6 to 2 inches
BTU content - 1,008; Specific gravity - .60
Distribution pressure - Summer - 15 psi; winter - 30 psi
Peak demand at 0° F. - 8,000,000 cu. ft.
Rates - Will be furnished by Western Kentucky Gas Company,
Mayfield, Kentucky

WATER AND SEWERAGE

Water

Company serving Mayfield - Mayfield Electric and Water System

Source - 4 deep wells

Treatment plant capacity - 3,132,000 gpd

Average daily consumption - 1,158,677 gallons

Peak daily consumption - 1,536,000 gallons

Type treatment - Aeration, chlorine, fluoride and lime

Storage capacity - 840,000 gallons

Average pressure - 65 psi

Average temperature - 59 degrees F.

Size mains - 2, 4, 6, 8, 10 and 12 inches

MONTHLY WATER RATES FOR WHOLESAL AND INDUSTRIAL CONSUMERS

Within The City (All Meter Sizes)

First	2,000 gallons	\$2.10 (Minimum)
Next	3,000 gallons	.98 per M gallons
Next	5,000 gallons	.83 per M gallons
Next	15,000 gallons	.64 per M gallons
Next	25,000 gallons	.45 per M gallons
Next	50,000 gallons	.30 per M gallons
Next	100,000 gallons	.27 per M gallons
Next	100,000 gallons	.24 per M gallons
Next	200,000 gallons	.21 per M gallons
Next	500,000 gallons	.18 per M gallons
Next	1,000,000 gallons	.15 per M gallons

Outside The City (All Meter Sizes)

Consumers and users served outside the corporate limits of the City of Mayfield shall pay a rate 50 percent above the rates charged within the corporate limits.

Minimum Charges (Based upon the size of meter used)

		<u>Within the</u> <u>Corporate Limits</u>	<u>Outside the</u> <u>Corporate Limits</u>
Under	1-inch meter	\$ 2.10	\$ 3.15
1-inch to 1 3/4-inch	meter	4.50	6.75
	2-inch meter	15.00	22.50
	3-inch meter	30.00	45.00
	4-inch meter	45.00	67.50
	6-inch meter	105.00	157.50

Fire Hydrant Rate

\$3.00 per month per hydrant.

Sprinkler System Rates

4-inch connection - under 600 heads	\$ 72.00 per year
2 cents per head per year for additional heads over 600	
6-inch connection - under 600 heads	\$ 90.00 per year
2 cents per head per year for additional heads over 600	
8-inch connection - under 600 heads	\$144.00 per year
2 cents per head per year for additional heads over 600	

Name of water district - Hickory Water District

Date when water district began operating - March, 1967

Source of raw water - 2 wells

Capacity of treatment plant - 365 gpm

Type of treatment - Chlorination and soda ash

Average amount of water used in a 24-hour period - 100,000 gallons

Peak amount of water used in a 24-hour period - 120,000 gallons

Water district storage capacity - 225,000 gallons

Average pressure - 61-63 psi

Size mains - 4, 6, and 8 inches

Rates

	2,000 gallons or less	\$4.00 (Minimum)
Next	3,000 gallons or less	1.75 per 1,000 gallons
Next	5,000 gallons or less	1.25 per 1,000 gallons
Next	10,000 gallons or less	1.00 per 1,000 gallons
Next	30,000 gallons or less	.75 per 1,000 gallons
Next	50,000 gallons or less	.50 per 1,000 gallons
All over	100,000 gallons or less	.40 per 1,000 gallons

Surface water sources - Obion and Mayfield Creeks and West Fork
of Clark River
Average discharge - Obion Creek 36 cfs, Mayfield Creek 230 cfs
Expected ground water yield - in entire county - about 500-1,000 gpm

Sewerage

Company serving Mayfield - Mayfield Electric and Water System
Design capacity - 1.12 million gpd
Average daily flow - 1.3 million gallons (dry weather flow)
Treatment - primary and secondary
Type treatment - primary clarification, aeration, secondary clarification,
anaerobic digester, sludge drying beds, Zimco sludge digester now
being installed.
Treated effluent discharged into - Red Duck Creek - a tributary to
Mayfield Creek
Size of sanitary mains - 6 to 24 inches
Size of storm mains - 8 to 42 inches

MONTHLY SEWER RATES AND CHARGES

Within the City

65 percent of the monthly water bill based on the above water
rates, or a minimum charge of \$1.50 per month, whichever
is the greater.

Sewer connection charge to remain \$185.00 until 365 consecutive
days after sale of revenue bonds at which time sewer connection
charge will be \$225.00

Outside the City

65 percent of the monthly water bill based on the above water
rates, or a minimum charge of \$2.25 per month, whichever
is the greater.

Sewer connection charge to remain \$185.00 until 365 consecutive
days after sale of revenue bonds in 1970 at which time sewer
connection charge will be \$337.50.

LOCAL GOVERNMENT

City

Structure - Mayor - 4-year term; 12 councilmen - 2-year terms
 Budget 1970-71 - General Fund \$658,400; Total operating expenses
 for fiscal year ending June 30, 1970: Mayfield Water System -
 \$163,704.32; Mayfield Sewer System - \$109,656.46; Mayfield Electric
 System - \$933,738.18.

Fees and licenses - Earnings tax 2/3 of one percent deducted from
 payroll; occupational (business) license tax one percent of gross
 business receipts.

County

Structure - County judge - 4-year term; 3 Commissioners - 4-year terms
 Budget 1969-70 - General Fund \$186,400; Road Fund \$148,500.

Assessed Value of Property, 1969

<u>Classes of Property*</u>	<u>Mayfield</u>	<u>Graves County</u>
Real Estate	\$38,150,220 (1970 figure)	\$118,280,168
Tangibles	19,114,327 (1970 figure)	45,209,117
Public Service	4,814,943	20,115,633

Local General Property Tax Rates Per \$100 of Assessed Valuation, 1969 ^{12/}

<u>Taxing Unit**</u>	<u>Mayfield</u>	<u>Graves County</u>
State	\$.015	\$.015
County	.150	.150
School	.706	.402
City	.340	
Total	\$ 1.211	\$.567

*Property assessed at 100 percent of fair value.

**Manufacturing machinery, raw materials inventories and goods in
 process inventories are not subject to local tax. State rate is only
 \$0.15 per \$100.

Planning and Zoning

Agency - Mayfield Planning Commission
Plans completed - Comprehensive Plan, Zoning Ordinance, Commercial Area Study, Parking Study, Public Improvements Program, Capital Improvements Budget
Plans in process - Housing Study, Fringe Area Study
Codes adopted - Kentucky State Plumbing Code, Kentucky Standards of Safety
Other programs - 190 units public housing completed, 50 additional units public housing planned

Safety

<u>Police</u>	<u>Mayfield</u>	<u>Graves County</u>
Total staff	33	7
Radio-patrol cars	3	3
Other equipment	2 mobile units	

Fire

American Insurance Association Fire Rating	6
Full-time staff	30
Volunteers	24
Equipment:	
1,000-gpm pumper	1 (with a 750-foot aerial ladder)
750-gpm pumpers	3
500-gpm pumper	1
ladder truck	5
Grass fire jeep with 100-gpm pumper	1
Safety net	1
Ambulances	3

Note: Mayfield Fire Department serves manufacturing firms in the county that employ city residents, and provides ambulance service for the entire county.

Rescue Service

Mayfield-Graves County Civil Defense Rescue Squad:
Number of volunteers - 24
Equipment - fire truck with 1,200 gallons water; fire truck with 1,000 gallons water; 3 other pieces of equipment
Personnel training - fire fighting

Sanitation

Mayfield

Type service	private
Cost	
residential	\$2.50 per month
business	arranged by contract
Collection frequency	
residential	twice weekly
business	arranged by contract
Trash pickup	included
Disposal method	land fill

HEALTH

Hospitals

General Hospital

Beds

Community Hospital

64

General hospital facilities - 2 operating rooms, delivery room, emergency room, 6-bed coronary care unit, 10 bassinets, physical therapy department

Medical staff - 15 doctors, 22 registered nurses, 21 licensed practical nurses, 1 pathologist, 1 physical therapist, 1 inhalation therapist, 1 ADA dietitian

Mayfield Hospital and Clinic

38

General hospital facilities - operating room, delivery room, emergency room, laboratory, nursery, infant isolette

Medical staff - 3 doctors, 5 registered nurses, 6 graduate licensed practical nurses, 4 licensed practical nurses

Other

Fuller-Gilliam Clinic

Facilities - X-ray, laboratory, emergency room

Medical staff - 3 doctors

J. U. Kevil Mental Health and Mental Retardation Center

Mental Health Division

Services - Psychiatric services, counselling available to residents of the Congressional District

Staff - Psychiatrist, psychologist, social worker (MSW), mental health registered nurse, arts and crafts director, mental retardation consultant

Mental Retardation Division

Services - Day care classes, training, workshop classes for children and adults

Staff - Director, assistant director and supply coordinator, speech therapist, full-time speech therapist, part-time social worker, 3 teachers, 7 teachers' aides, 2 teachers (County Board of Education employees).

Nursing Homes

	<u>Number</u>	<u>Beds</u>
Personal care homes	6	336

Day Care Center

Mayfield has 3 day care centers with a total capacity of 103 children.

Public Health

Facility - Graves County Health Department

Staff - Three sanitarians, four nurses, two clerks, administrative assistant (part-time), plumbing inspector (part-time), dentist (part-time), dental hygienist (part-time)

Budget 1970-71 - \$84,000

OTHER LOCAL FACILITIES

Communications

Telephone - Mayfield - South Central Bell Telephone Company
Graves County - West Kentucky Telephone Cooperative
Corporation
Services - Standard

Telegraph - Western Union Telegraph Company
Services - Office, messages delivered by phone and U.S. mail

Postal - U.S. Post Office
Class - 1 (level 11)
Mail received - 3 times daily
Mail dispatched - 3 times daily

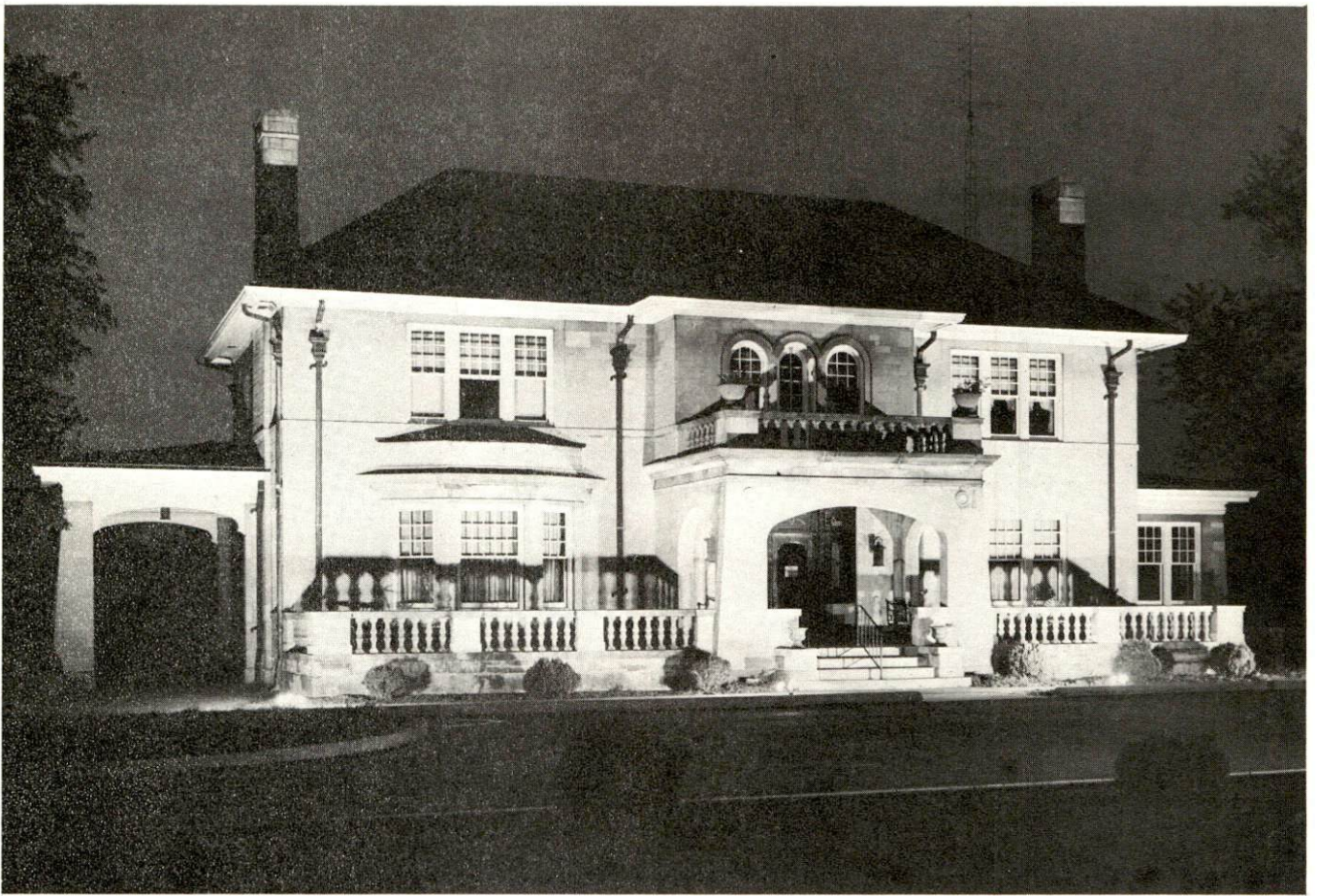
Newspapers - Mayfield Messenger
Daily and circulation - Daily except Sunday 7, 125
Other papers received from - Louisville, Kentucky; Memphis
and Nashville, Tennessee; Chicago, Illinois; Western edition of the
Wall Street Journal

Radio - WNGO-AM and FM
Reception from - 15 stations located within a 100-mile radius

Television -
Reception from - Paducah, Kentucky; Nashville and Memphis, Tennessee;
Cape Girardeau, Missouri; Harrisburg, Illinois
Kentucky Educational Television - Murray transmitter - channel 21

Library Services

Public Libraries - Mayfield-Graves County Library (2 branches)
Size collection - 28,000 volumes
Circulation, 1969 - 89,026
Services - Bookmobile, periodicals, films, pictures, records, athletic
equipment lending; book station at Senior Citizens, story hours,
scheduled library visits for schools; children's films in summer;
art classes; preparation classes through ETV for GED certificate
Special collections - Civil War and Kentucky history



Mayfield-Graves County Library



North Side Church of Christ

Religious Institutions

Number of churches - 34

Denominations - Baptist, Methodist, Presbyterian, Christian, Church of Christ, Roman Catholic, Episcopal, Assembly of God, Christian Scientist, Church of the Nazarene, Holiness Church, Gospel Mission Holiness to God, Pentecostal Holiness, Seventh Day Adventist, Church of God, and Jehovah's Witnesses

Financial Institutions

<u>Banks</u>	Statement as of June 30, 1970	
	<u>Assets</u>	<u>Deposits</u>
Liberty Savings Bank	\$21,031,101.60	\$19,275,927.23
First National Bank	17,381,588.14	14,812,521.12
Exchange Bank	7,473,417.64	6,397,500.79
<u>Savings and Loan Associations</u>	<u>Assets</u>	<u>Shared Accounts</u>
First Federal Savings and Loan Association	\$15,488,409.03	\$14,467,731.00
Security Federal Savings and Loan Association	2,522,839.02	2,158,281.84

Hotels and Motels

<u>Number</u>	<u>Units</u>
7	237

Clubs and Organizations

Civic - Mayfield-Graves County Chamber of Commerce, Retail Merchants Association, Kiwanis, Lions, Rotary, Jaycees, Key Club, Optimist Club

Fraternal - American Legion, VFW, Moose, Masonic, Odd Fellows, Disabled American Veterans, Woodmen of the World

Women's - Business & Professional Women's Club, Mayfield Woman's Club, Community Woman's Club, Laurel Oak Garden Club, Hospital Auxiliary, Emblem Club, Mayfield Council of Club Women, Junior Welfare League

Youth - Boy Scouts, Girl Scouts, FFA, FHA

Other - Cardinal Club (Booster), Mayfield Music Club, Newcomers Club, Senior Citizens Club

RECREATION

Local

Public Recreation Facilities

Supervised program - Summer and winter - Mayfield Playground and Recreation Board

Parks - 4

Playgrounds - 5

Tennis courts - 4

Baseball diamonds - 5

Football fields - 2

Other - Adult softball field, stadium, fairgrounds

Private Recreation Facilities

Country clubs - 2

Golf courses - 1 (18-hole), 1 (9-hole)

Swimming pools - 2

Movie theaters - 1 indoor, 1 drive-in

Bowling lanes - 2

Tourist Attractions

Woolridge Monuments

Annual Purchase District Fair

Area (Within 25 miles)

Kentucky Lake

Kentucky Dam

Kentucky Dam Village State Park

Kentucky Territory - frontier settlement reproduction

Tennessee River

Kenlake State Park

Governor's Cup Regatta, Watkins Cup Regatta at Kenlake State Park

Kentucky Lake Fall Fishing Derby

Septemberfest - square dancing festival at Kentucky Dam Village State Park

Calvert City Auto Museum

International Banana Festival, Fulton

Alben W. Barkley Monument, Paducah

Irvin S. Cobb Memorial, Paducah

Ray Harm Wildlife Art Gallery, Paducah

AGRICULTURE - NATURAL RESOURCES - CLIMATE

Agriculture 13/

	<u>Graves County</u>	<u>Labor Market Area</u>
Total land area (acres)	358,400	1,240,320
Percent of area in farm land	70.5	66.0
Number of farms	2,605	7,575
Average size of farm (acres)	96.9	108.1
1964 value of all farm products	\$ 8,891,660	\$28,749,451
Value per farm	3,413	3,795
Total crop sales	4,273,960	12,129,648
Total livestock & livestock products	4,617,700	16,609,767
1968 agricultural production included:		
Burley tobacco (lbs.)	495,000	5,515,000
Corn (bu.)	1,725,000	6,818,000
Cattle and calves (number)	39,200	169,400
Hogs and pigs (number)	41,000	136,500
Milk production (1967) (lbs.)	36,920,000	122,495,000

Natural Resources

Principal mineral resources	Clays
Other mineral resources	Sand and gravel
Acres of commercial forest land	80,200
Most abundant tree species	Red oaks, white oaks, hickories, sweetgum, cottonwood, ash, and hard maple

Climate 14/

	<u>Graves County</u>
Temperature	
Annual mean (30-year record)	59.6 degrees
Average annual 1969	58.2 degrees
Record highest (27-year record), July, 1954	104.0 degrees
Record lowest (27-year record), January, 1963	- 5.0 degrees
Seasonal heating degree-days (30-year record)	3,821 degrees
Precipitation	
Mean annual total (30-year record)	45.23 inches
Mean annual snow and sleet (27-year record)	9.7 inches
Total precipitation, 1969	42.06 inches
Mean No. days precipitation (27-year record) (.01 inches or more)	114
Average No. days thunderstorms (22-year record)	53
Prevailing winds (22-year record)	Southwest

HISTORY

Graves County is located west of the Tennessee River in an 8,500 square mile area known as the Jackson Purchase. The territory is the former tribal lands of the Chickasaw Indians which the United States purchased in 1818 by treaty after negotiations by General Andrew Jackson and Governor Isaac Shelby. The tract is composed of the eight westernmost counties in Kentucky and twenty westernmost Tennessee counties.

The county is named for Major Benjamin Graves who migrated to Kentucky from Virginia when a young man, served in the State Legislature for several years, and lost his life while an officer in the War of 1812. In 1823, Graves County became the 75th Kentucky county formed, and is the 7th largest county in the state.

Mayfield, the county seat, was established in 1823. It was named for Mayfield Creek on which it is located. The creek was named for a wealthy southern gentleman who often traveled up and down the Mississippi River during the early years of the nineteenth century to attend horseracing events. He was kidnapped in 1817 at the mouth of the creek that bears his name, carried upstream a short distance, and lost his life in an effort to escape.

During the Civil War, most of the people of Mayfield and Graves County sympathized with the Confederacy, and at different times, troops of both sides occupied the town.

A traditional event still flourishing in Mayfield is Mule Day, held on the third Monday in February. Animals are brought to the city in droves or by trucks and offered for sale in the "swapping ring," marked off on the street around the Courthouse Square. Not only is there "trafficking" in mules, but anything that people wish to trade, from pocket knives to bicycles, is offered.

SOURCES OF INFORMATION

- 1/ U. S. Department of Commerce, Bureau of the Census, Census of Population, 1950, 1960, 1970 (Preliminary figures).
- 2/ Kentucky Department of Economic Security, Division of Research and Statistics.
- 3/ Kentucky Department of Economic Security, Number of Workers in Manufacturing Industries Covered by Kentucky Unemployment Insurance Law Classified by Industry and County, September 1959 and 1969.
- 4/ Kentucky Department of Commerce, 1970 Kentucky Directory of Manufacturers.
- 5/ Kentucky Department of Economic Security, Division of Employment Services, Mayfield Office.
- 6/ Kentucky Department of Economic Security, Kentucky Labor Supply Estimates by County, January 1970.
- 7/ Kentucky Department of Commerce, Future Labor Supply by 1976.
- 8/ University of Kentucky, Office of Development Services and Business Research, Total Personal Income for Kentucky.
- 9/ University of Kentucky, Office of Development Services and Business Research, Per Capita Income in Kentucky.
- 10/ Illinois Central Railroad, Louisville, Kentucky.
- 11/ McLean Trucking Company, Winston-Salem, North Carolina.
- 12/ Kentucky Department of Revenue, Kentucky Property Tax Rates, 1969.
- 13/ U. S. Department of Commerce, Bureau of the Census, Census of Agriculture, 1964. U. S. Department of Agriculture and Kentucky Department of Agriculture, Kentucky Agricultural Statistics, 1969.
- 14/ U. S. Department of Commerce, Environmental Science Services Administration, Climatological Data, 1969.

All other information was obtained from governmental offices, local businesses and organizations.