

1975

Industrial Resources: Green County - Greensburg

Kentucky Library Research Collections
Western Kentucky University, spcol@wku.edu

Follow this and additional works at: https://digitalcommons.wku.edu/green_cty

 Part of the [Business Administration, Management, and Operations Commons](#), [Growth and Development Commons](#), and the [Infrastructure Commons](#)

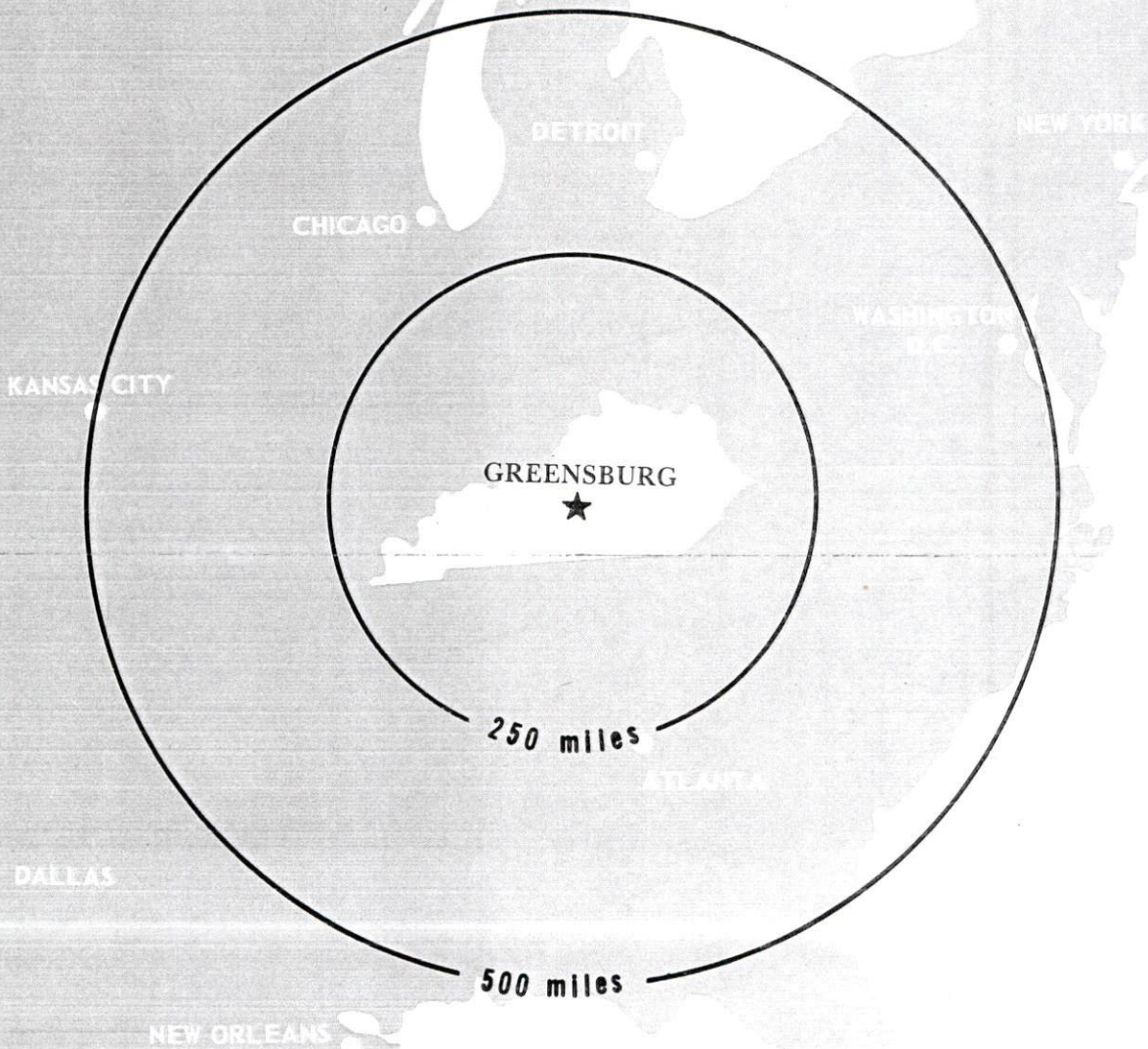
Recommended Citation

Kentucky Library Research Collections, "Industrial Resources: Green County - Greensburg" (1975). *Green County*. Paper 10.
https://digitalcommons.wku.edu/green_cty/10

This Report is brought to you for free and open access by TopSCHOLAR®. It has been accepted for inclusion in Green County by an authorized administrator of TopSCHOLAR®. For more information, please contact topscholar@wku.edu.

INDUSTRIAL RESOURCES

GREENSBURG KENTUCKY



GREEN COUNTY, KENTUCKY

INDUSTRIAL RESOURCES
GREENSBURG, KENTUCKY

Prepared by

The Kentucky Department of Commerce

in cooperation with

The Greensburg-Green County Chamber of Commerce

1975

8/20/75

TABLE OF CONTENTS

<u>Chapter</u>	<u>Page</u>
INDUSTRIAL SITES	i
GREENSBURG, KENTUCKY - A RESOURCE PROFILE	1
THE LABOR MARKET.	5
Population Trends	5
General Employment Characteristics, 1973	5
Manufacturing Employment Trends by Industry	6
Green County Manufacturing Firms, Their Products and Employment	7
Wages.	9
Labor Organizations	10
Estimated Male Labor Supply	10
Estimated Female Labor Supply	10
Per Capita Personal Income.	11
TRANSPORTATION	12
Rail.	12
Truck Service	12
Air	13
Bus	13
Taxi	13
Rental Services	13
POWER AND FUEL	14
Electricity.	14
Natural Gas	14
Other Fuels	15
WATER AND SEWERAGE	16
Water	16
Sewerage	17
LOCAL GOVERNMENT	18
City.	18
County.	18
Assessed Value of Property, 1974	18

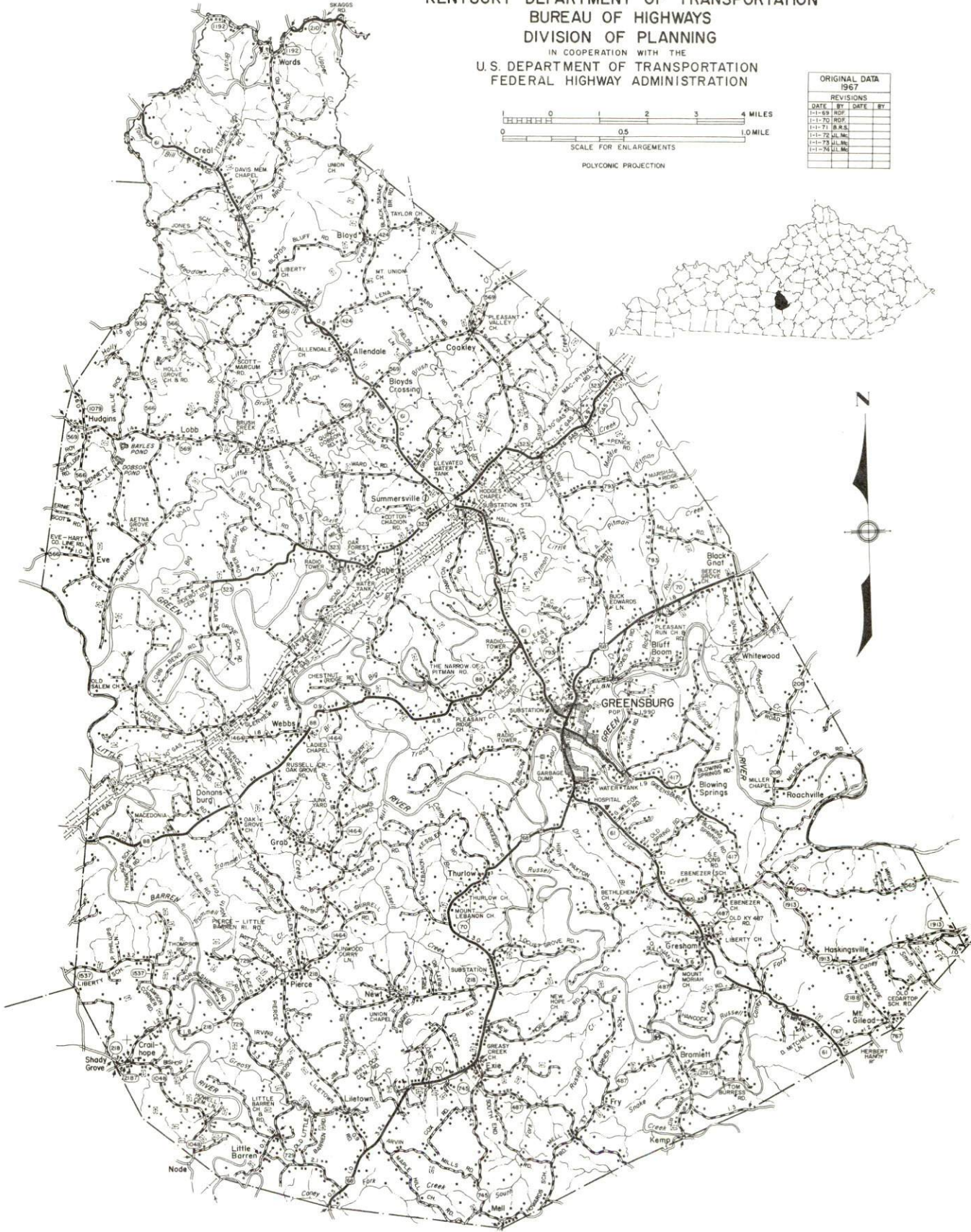
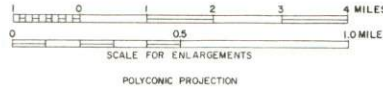
<u>Chapter</u>	<u>Page</u>
Property Taxes	18
Local Property Tax Rate Per \$100 of Assessed Valuation, 1974	19
Planning and Zoning	19
Safety	19
Police	19
Fire	19
Rescue Service	20
Sanitation	20
 EDUCATION	 21
Public Schools	21
Vocational Schools	21
Colleges and Universities	22
 HEALTH	 24
Hospitals	24
Nursing Homes	24
Public Health	24
 OTHER LOCAL FACILITIES	 26
Communications	26
Library Services	26
Religious Institutions	26
Financial Institutions	29
Hotels and Motels	29
Clubs and Organizations	29
 RECREATION	 30
Local	30
Area	30
 AGRICULTURE - NATURAL RESOURCES - CLIMATE	 32
Agriculture	32
Natural Resources	32
Climate	33
 GREEN COUNTY HISTORICAL POINTS OF INTEREST	 35

GENERAL HIGHWAY MAP GREEN COUNTY KENTUCKY

PREPARED BY THE
KENTUCKY DEPARTMENT OF TRANSPORTATION
BUREAU OF HIGHWAYS
DIVISION OF PLANNING

IN COOPERATION WITH THE
U.S. DEPARTMENT OF TRANSPORTATION
FEDERAL HIGHWAY ADMINISTRATION

ORIGINAL DATA 1967			
REVISIONS			
DATE	BY	DATE	BY
11-1-69	RDF		
11-1-70	RDF		
11-1-71	B.R.S.		
11-1-72	SAL.M.		
11-1-73	JAL.M.		
11-1-76	LL.M.		



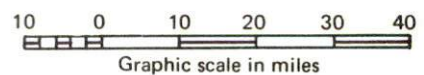
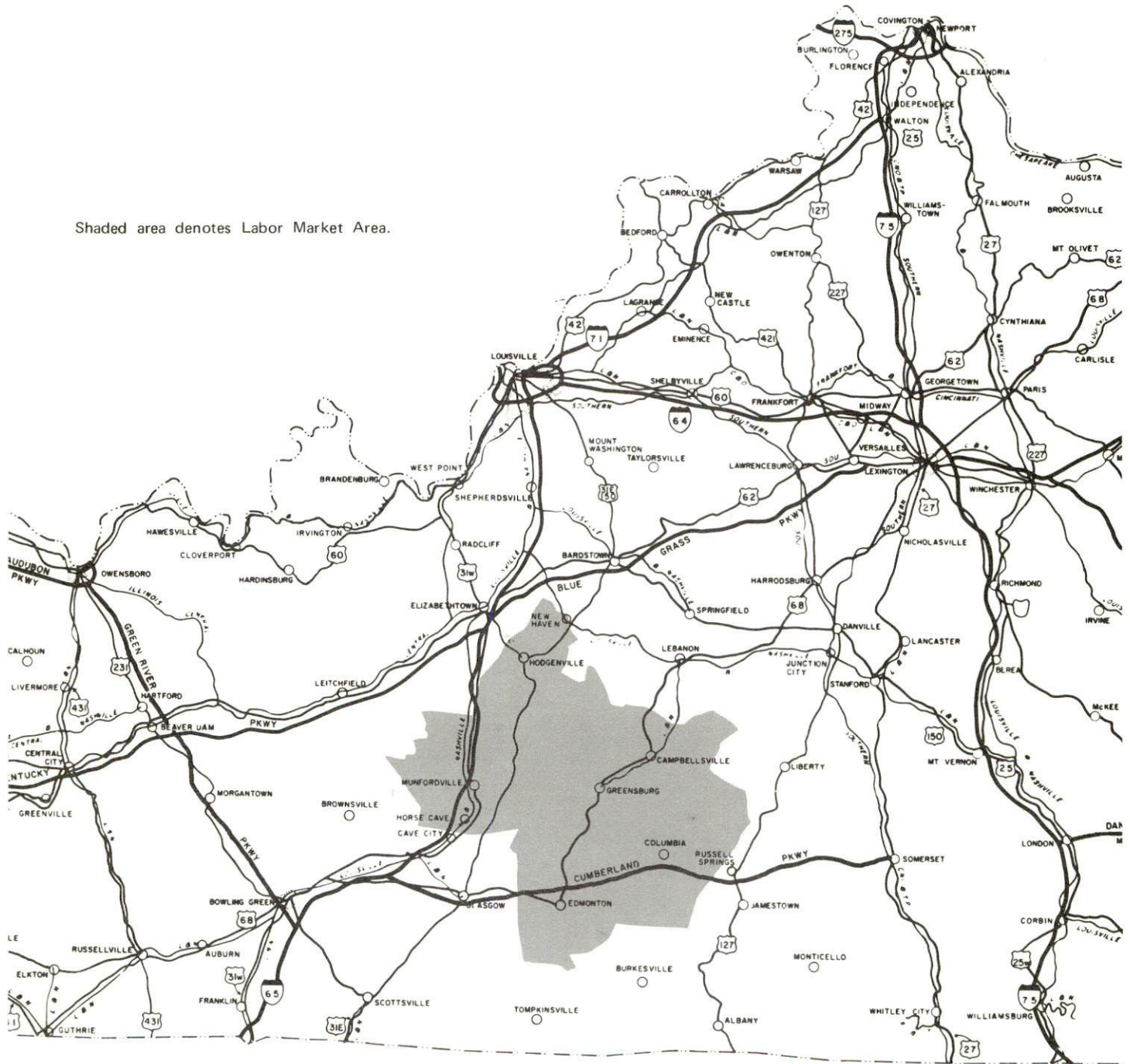


AERIAL VIEW OF GREENSBURG, KENTUCKY

GREENSBURG LABOR MARKET AREA



Shaded area denotes Labor Market Area.



GREENSBURG, KENTUCKY - A RESOURCE PROFILE

Location

Greensburg, the site of the Old Green County Courthouse, is the county seat and the largest city in Green County. Greensburg is 78 miles southeast of Louisville, Kentucky; 131 miles northeast of Nashville, Tennessee; and 170 miles southwest of Cincinnati, Ohio.

Green County, covering an area of 282 square miles, is located in southcentral Kentucky in the Mississippian Plateau Region. It is bordered by Hart County on the west, Larue County on the north, Taylor County on the east, and Metcalfe and Adair Counties on the south.

In 1970, Greensburg had a population of 1,990, and Green County had a population of 10,350 which increased to an estimated 10,500 in 1973.

The Economic Framework

Total employment in Green County in 1973 averaged 4,310 with agriculture providing 1,550 jobs, manufacturing 440, government 380, and trade and services 410. In the decade from 1964 to 1974, manufacturing employment increased by 385 percent. Major industrial products include furniture dimension stock; rattan furniture; house furnishings; work clothes, uniforms and racing apparel; and enamel coated copper wire.

Per capita personal income in Green County in 1972 was \$2,679, which represents an increase over the 1962 per capita income of approximately 97 percent.

The Greensburg labor market area includes Green County and the five surrounding counties. In 1973, area employment averaged 32,930 with agriculture providing 8,520 jobs, manufacturing 6,070, government 3,590, and trade and services 3,900. Area manufacturing employment increased approximately 81 percent between 1964 and 1974 with sharpest gains in textile mill products and apparel and related products industries.

This area has a deficit of 1,358 manufacturing jobs when measured against the national industrial employment-population ratio. This indicates an area with a potential for additional manufacturing production.

Resources for Growth

1. There is a current estimated labor supply of 2,870 men and 3,800 women available for industrial jobs in the Greensburg labor market area. In addition, approximately 3,650 young men and 3,550 young women will become 18 years of age by 1981 and will be potentially available for work.

2. The Louisville and Nashville Railroad provides freight service to Greensburg twice weekly. Highway transportation is provided by U. S. 68 and Kentucky Highways 70, 61, 88 and 565. The Taylor County Airport, 11 miles away, offers a paved runway for small aircraft; commercial air service is available out of Standiford Field in Louisville, 76 miles distant.

3. Electricity is furnished to Greensburg by the Kentucky Utilities Company. Taylor County RECC and Farmers RECC serve Green County. Natural gas is furnished by the Western Kentucky Gas Company. Within a 40-mile radius, propane is available from four distributors; and within an 11-mile radius, distillate fuel oil is available from nine. The raw water supply is more than adequate for future industrial growth.

4. There are 2 junior colleges, 1 senior college, and 1 community college within a 45-mile radius of Greensburg. The Green County Area Vocational Education Center, located in Greensburg, offers training in nine course areas. The Elizabethtown State Vocational-Technical School, 38 miles away in Elizabethtown, offers training in six areas.

Community Programs for Improvement

Recent or Underway

1. The Greensburg Police Department recently bought a new radar traffic control unit and a police scanner.

2. A new laboratory for testing sewage is now complete and will be moved into the new laboratory building in 1975.

3. Ambulance service is now available to Greensburg through the Lake Cumberland Emergency Medical Services System, Inc., a non-profit corporation serving the 10-county Lake Cumberland area. Green County alone will be served by three completely equipped or "conforming" ambulances which are tied in by portable call units to the hospital, the doctors and the other nine counties.

4. Green County completed a new high school in 1973. Phase English is now offered in the high school; two kindergarten units were established; and three new courses, welding, auto body and machine shop, were added to the Green County Area Vocational Education Center.

5. The Old Green County Courthouse, the oldest courthouse west of the Alleghenies, is being renovated as a historical site.

6. The First Federal Savings and Loan Association of Campbellsville has opened a branch office in Greensburg.

7. Greensburg now hosts an annual celebration called "Cow Days."

Future

1. Greensburg is currently setting aside money for the purchase of a new fire truck.
2. A new police office building will be constructed within two years which will house a dispatcher and updated facilities.
3. The possibility of incorporating the Green County Health Department into a district facility is under study.
4. Facilities now exist for a teen center which is expected to open within two years.

Recreation, Entertainment and Livability

Greensburg boasts a fine 65-acre community park developed and financed by the local residents. The park has a swimming pool; 3 softball diamonds, one of which is lighted; a baseball diamond, which has bleachers under roof and is lighted for night games; air-conditioned dining room; pavillion; fishing area; horse show ring, 20 horseshoe pits; 2 tennis courts; 35 picnic areas with grills; equipped playground and croquet court - all in lighted areas. The Central Kentucky Invitational Softball Tournament is held here annually.

Greensburg is the location of the annual Mid-Kentucky State Appaloosa Horse Show, an event which is recognized as a tremendous tourist attraction. Another well-known event is the annual 25-mile Green River Canoe Race. In addition, there are four state or national parks within 40 miles of Greensburg.

Green River Lake State Park encompasses 1,182 acres. Facilities and activities include an 8,200-acre lake, fishing, boating, swimming, picnicking, and primitive camping.

Abraham Lincoln Birthplace National Historical Site, is a 116-acre site which includes the original log cabin where Lincoln was born and lived until he was 2 1/2 years old. Nearby is Abraham Lincoln's Boyhood Home which offers picnic areas and hiking trails.

Lake Cumberland State Resort Park offers extensive recreational facilities including: lodge, dining room, restaurant, housekeeping cottages, tent and trailer campsites, picnic areas, planned recreation, playground, golf, miniature golf, hiking trails, horseback riding, tennis, fishing, fishing boat rentals, houseboat rentals, resort pool, community pool and gift shop.

Mammoth Cave National Park covers 51,000 acres. This famous park, with more than 150 miles of charted caverns on five distinct levels encompasses one of the largest cave networks ever discovered. On the surface, Mammoth Cave Park provides a beautiful wildlife preserve. Park facilities include: hotel, motor lodge, group meeting facilities for up to 175, cottages, restaurant, coffee shop, campsites and picnic areas. Special attractions include: 2 large lakes, 2 state shrines, several historical sites, hillside chair lifts, scenic cruises on the Green River, nature trails, naturalist illustrated talks and a wax museum. Additional park activities include tennis, fishing and shuffleboard.

THE LABOR MARKET

POPULATION TRENDS

Area	Population				Percent Change	
	1973*	1970	1960	1950	1960-70	1950-60
Greensburg Labor Market	N/A	1,990	2,334	1,032	-14.7	+126.2
Area	78,200	73,354	75,065	78,395	-2.3	-4.3
Green County	10,500	10,350	11,249	11,261	-8.0	-0.1
Adair County	14,700	13,037	14,699	17,603	-11.3	-16.5
Hart County	14,900	13,980	14,119	15,321	-1.0	-7.9
Larue County	11,600	10,672	10,346	9,956	+3.2	+3.9
Melcalfe County	8,200	8,177	8,367	9,851	-2.3	-15.1
Taylor County	18,300	17,138	16,285	14,403	+5.2	+13.1

*Provisional Estimates.

Sources: U. S. Department of Commerce, Bureau of the Census, Census of Population, 1970, 1960, 1950. U. S. Bureau of the Census, Current Population Reports, Series P-26, June 1973.

GENERAL EMPLOYMENT CHARACTERISTICS, 1973

Major Employment Group	Employment	
	Green County	Labor Market Area
TOTAL	4,310	32,930
Agricultural	1,550	8,520
Nonagricultural	2,760	24,410
Manufacturing	440	6,071
Government	380	3,590
Trade and Services	409	3,906

Source: Kentucky Department for Human Resources, Bureau for Administration and Operations.

MANUFACTURING EMPLOYMENT TRENDS BY INDUSTRY
MARCH 1974 AND 1964

Industry	Green County			Labor Market Area		
	1974	1964	% Change	1974	1964	% Change
TOTAL	485	100	+ 385.0	6,247	3,443	+ 81.4
Food & Kindred Products	32	33	- 3.0	279	337	- 17.2
Tobacco	0	0	0	12	27	- 55.6
Apparel, Textiles, Leather	144	11	+1209.0	4,625	2,625	+ 76.2
Lumber, Furniture	214	45	+ 375.6	534	389	+ 37.3
Printing & Publishing, Paper	6	4	+ 50.0	89	41	+117.1
Stone, Clay & Glass	14	7	+ 100.0	33	11	+200.0
Primary Metals	72	0	--	116	0	--
Machinery, Metal Products, Equipment	3	0	--	559	0	--
Other	0	0	0	0	13	-100.0

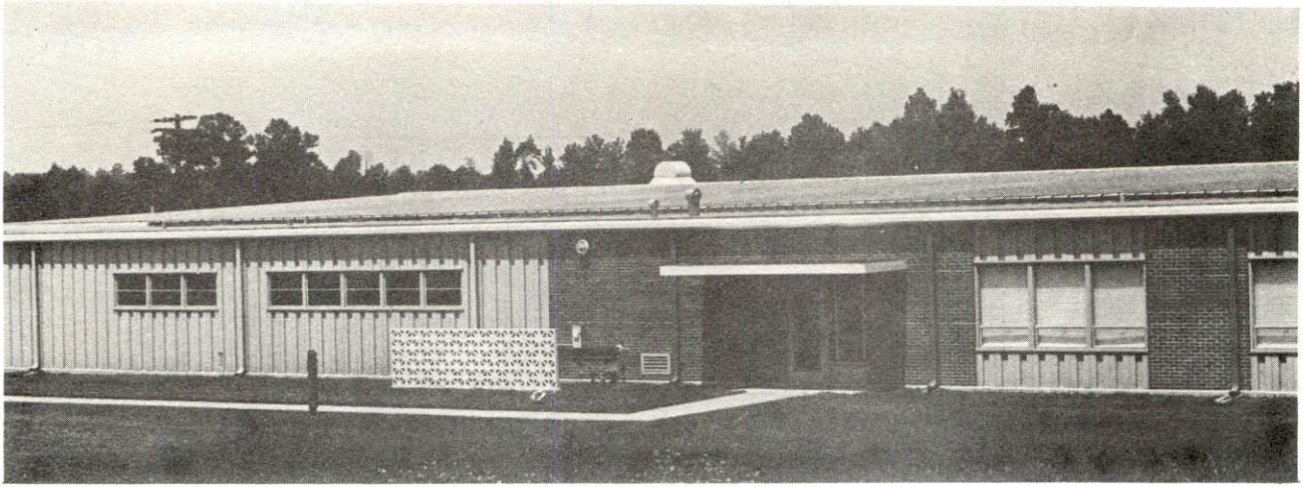
Source: Kentucky Department for Human Resources, Number of Workers in Manufacturing Industries Covered by Kentucky Unemployment Insurance Law Classified by Industry and County, March 1974, March 1964.

GREEN COUNTY MANUFACTURING FIRMS,
THEIR PRODUCTS AND EMPLOYMENT

Firm (Establishment date)	Product	Employment			Organized
		Total	Male	Female	
<u>Greensburg</u>					
American Needlecraft, Inc. (1927)	Quilted bedspreads, comforters, draperies, travel accessories cloth and plastic	60	5	55	*
Clark Casual Furniture, Inc. (1960)	Rattan furniture	102	90	12	*
Edmonton Manufacturing Company (1964)	Work clothes, uniforms, racing apparel	85	10	75	
Greensburg Bottling Company (1927)	Carbonated beverages	27	25	2	
Greensburg Manufacturing Company (1968)	Furniture dimension stock	111	108	3	
Greensburg Record-Herald (1930)	Newspaper	3	0	3	
Nally & Gibson Asphalt Plant	Bituminous asphalt	4	4	0	
Sharpe & Son Cedar and Hardwood Mill (1956)	Cedar lumber and posts, hardwood lumber	2	2	0	
Taylor-Green Ready Mix Company (1961)	Ready mixed concrete, concrete products	6	5	1	
Tennessee Gas Pipeline Company (1951)	Liquid hydrocarbon	47	47	0	
Winn Milling Company (1940)	Corn meal, feed	5	4	1	
Owen Wright (1963)	Lumber, tobacco sticks, cedar posts	3	3	0	
<u>Summersville</u>					
Anaconda Wire and Cable Company, Inc. (1966)	Enamel coated copper wire	75	75	0	*
Summersville Feed Mill (1964)	Custom grind mix feed	2	2	0	

*See Labor Organizations, page 10.

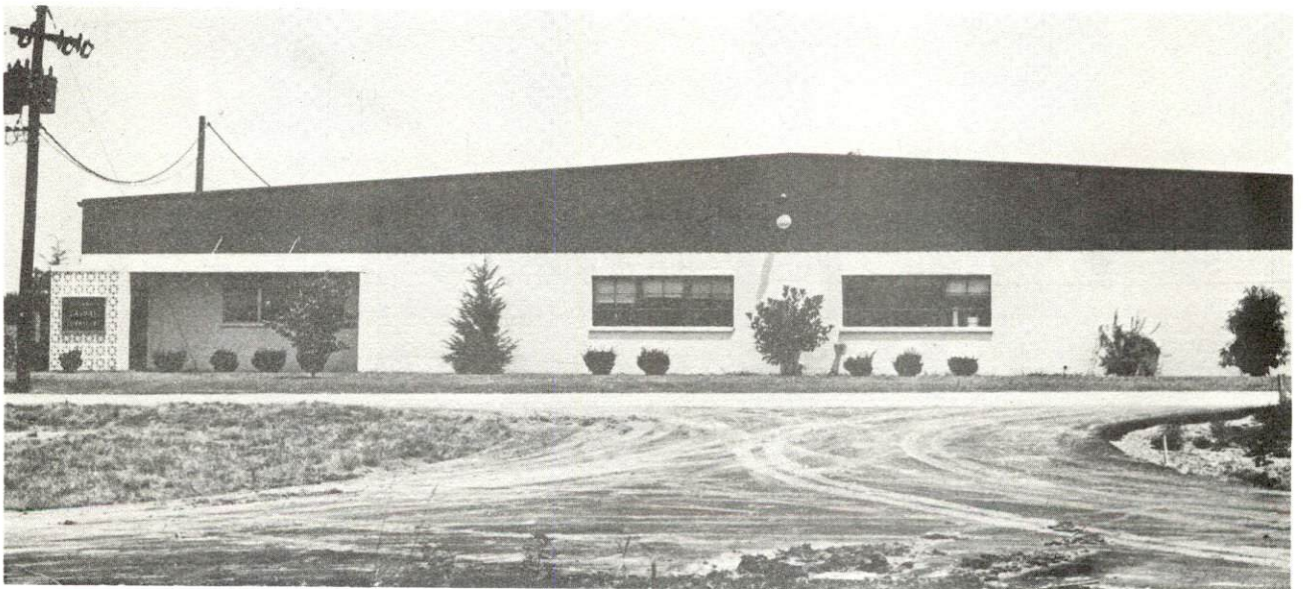
Source: Kentucky Department of Commerce, Research and Planning Division.



EDMONTON MANUFACTURING COMPANY



AMERICAN NEEDLECRAFT

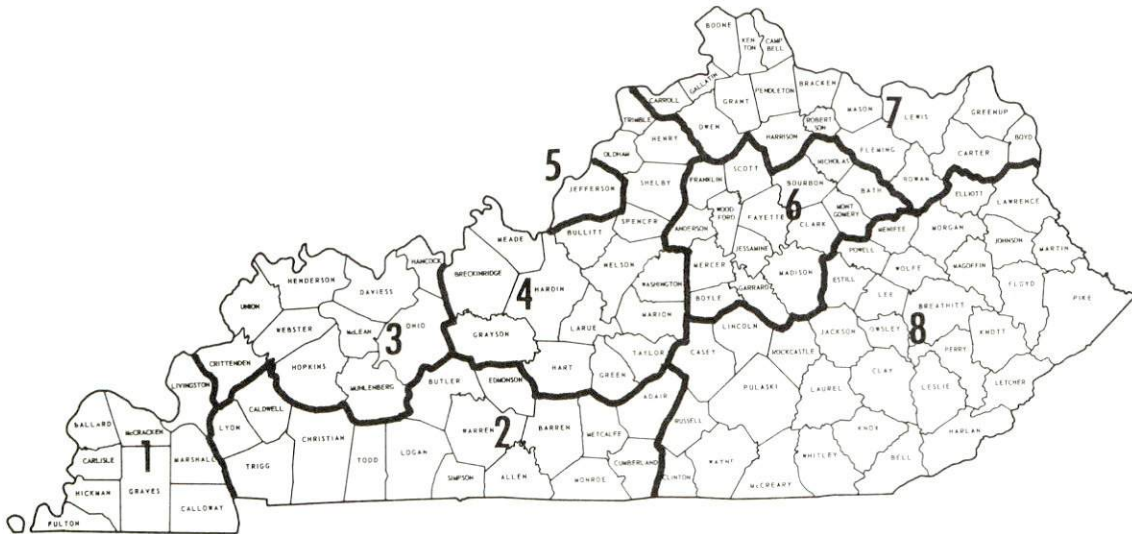


CLARK CASUAL FURNITURE

WAGES

Occupational wage rates for specific industries are usually not available to most government agencies, and wage data furnished to state employment agencies by industrial employers is protected from disclosure by federal law. The most reliable up-to-date wage information can be obtained by direct contact with local employers.

Associated Industries of Kentucky, a voluntary organization of Kentucky businesses, regularly collects occupational wage rates and fringe benefits data from participating member firms. Data is compiled for over 130 clearly defined office, production, and service occupations. Tabulations are published for eight regions of Kentucky, as shown on the map below. It should be noted that the data may be weighted by the preponderance of firms in the larger cities and may be somewhat higher than the rates paid in the smaller communities. Data from these tabulations are available, upon request, from the Kentucky Department of Commerce, Frankfort, Kentucky 40601.



Associated Industries of Kentucky Area Wage Surveys

LABOR ORGANIZATIONS

<u>Union</u>	<u>Representing manufacturing workers at:</u>
Communications Workers of America Teamsters	Clark Casual Furniture, Inc. Anaconda Wire and Cable Company, Inc.
United Furniture Workers of America	American Needlecrafts, Inc.

ESTIMATED MALE LABOR SUPPLY GREENSBURG LABOR MARKET AREA

<u>Area</u>	Current			Future	
	<u>Total</u>	<u>Not in Labor Force</u>	<u>Unemployed</u>	<u>Under- employed</u>	<u>Reaching 18 yrs. of age by 1981</u>
Labor Market					
Area	2,870	750	800	1,320	3,651
Green	410	130	120	160	504
Adair	480	0	180	300	583
Hart	400	150	120	130	722
Larue	520	230	100	190	597
Metcalfe	500	240	140	120	419
Taylor	560	0	140	420	826

Sources: Kentucky Department for Human Resources, Kentucky Labor Supply Estimates by County, 1973. Kentucky Department of Commerce, Future Labor Supply by 1981.

ESTIMATED FEMALE LABOR SUPPLY GREENSBURG LABOR MARKET AREA

<u>Area</u>	Current			Future	
	<u>Total</u>	<u>Not in Labor Force</u>	<u>Unemployed</u>	<u>Under- employed</u>	<u>Reaching 18 yrs. of age by 1981</u>
Labor Market					
Area	3,800	1,960	530	1,310	3,553
Green	620	320	90	210	437
Adair	500	230	70	200	601
Hart	800	490	100	210	689
Larue	760	490	40	230	586
Metcalfe	580	430	70	80	404
Taylor	540	0	160	380	836

Sources: Kentucky Department for Human Resources, Kentucky Labor Supply Estimates by County, 1973. Kentucky Department of Commerce, Future Labor Supply by 1981.

PER CAPITA PERSONAL INCOME

<u>Area</u>	<u>1972</u>	<u>1962</u>	<u>% Change</u>
Green County	\$2,679	\$1,361	+ 96.8
Labor Market Area			
Range	\$2,313 - 3,344	\$1,050 - 1,561	N.A.
Kentucky	3,634	1,769	+105.4
U.S.	4,549	2,381	+ 91.1

Sources: Office of Development Services and Business Research, College of Economics, University of Kentucky, Kentucky Personal Income 1929/68. U. S. Department of Commerce, Office of Business Economics, Survey of Current Business, May 1974, August, 1974.

TRANSPORTATION

Rail

Line serving Greensburg - Louisville and Nashville Railroad Company Services - 2 freights weekly (Tuesday and Thursday) north to Campbellsville, Kentucky;* no through freights; switching facilities; public siding space available for 6-7 cars. Nearest piggyback facilities - Glasgow, Kentucky, 41 miles away.

For details on routing, schedules, rates, and services, contact:

Manager of Industrial Development
Louisville and Nashville Railroad Company
908 West Broadway
Louisville, Kentucky 40203

Truck Service

Company

Home Office

Central Motor Express, Inc.

P. O. Drawer C

Campbellsville, Kentucky 40011

McDuffee Motor Freight, Inc.
(United Trucking)

332 High School Avenue

Lebanon, Kentucky 40033

Other Freight Services

Nearest Shipping Center

United Parcel Service
REA EXPRESS

Campbellsville, 11 miles away
Pickup and delivery service

HIGHWAY MILES AND TRUCK TRANSIT TIME IN DAYS FROM GREENSBURG, KENTUCKY, TO SELECTED MARKET CENTERS

City	Delivery		City	Delivery	
	Highway Miles	Time TL		Highway Miles	Time TL
Atlanta, Ga.	354	1	Los Angeles, Calif.	2,029	3
Birmingham, Ala.	288	1	Louisville, Ky.	78	1
Chicago, Ill.	376	1	Nashville, Tenn.	131	1
Cincinnati, Ohio	170	1	New Orleans, La.	632	1
Cleveland, Ohio	429	1	New York, N. Y.	847	3
Detroit, Mich.	450	1	Pittsburgh, Pa.	478	1
Knoxville, Tenn.	165	1	St. Louis, Mo.	342	1

*Until January 1, 1975, freight service was provided once daily. If demand increases, daily service may be reinstated.

Source: Delivery time only - Central Motor Express, Inc., P. O. Drawer C, Campbellsville, Kentucky 40011.

Air

	<u>Local</u>	<u>Nearest Commercial</u>
Location:	Taylor County Airport 11 miles northeast of Greensburg	Standiford Field Louisville, 76 miles north of Greensburg
Runways:	1 paved	3 paved
Length:	4,000 feet	5,000, 7,250 and 7,800 feet
Traffic		
Control:	Tetrahedron and wind sock	Control tower, approach and departure control, ground control, guards, radar service
Lighting:	Runway lights sundown to midnight	Runways, obstructions, beacon and approach and touchdown lights, center line on runways 1-19
Services:	80-100 octane, Jet A50, charter service, flight instructions, taxi and restaurant	TWA, American, Eastern, Piedmont, Ozark and Allegheny Airlines; Hertz, Avis, National and Budget rent-a-car service, restaurant, taxi, and city bus service
Air Freight		
Service:	Chartered air freight services must be arranged	Freight carrying airlines regularly service this terminal

Bus - Southern Greyhound Bus Line

Taxi - 1 company, 24 hour radio dispatched service

Rental Services - Trailers and trucks; car rentals and U-Haul
truck and trailer rentals available, 11 miles away

POWER AND FUEL

Electricity

Company serving Greensburg - Kentucky Utilities Company

Source of power - Kentucky Utilities Company

Total generating capacity - 1,735,000 KW

For industrial rates contact:

Kentucky Utilities Company

110 Public Square

Greensburg, Kentucky

Company serving Green County - Taylor County RECC

Source of power - East Kentucky Power Cooperative

Total generating capacity - 548,000 KW

For industrial rates contact:

Taylor County RECC

West Main Street

Campbellsville, Kentucky 42718

Company serving Green County - Farmers RECC

Source of power - East Kentucky Power Cooperative

Total generating capacity - 548,000 KW

For industrial rates contact:

Farmers RECC

504 South Broadway

Glasgow, Kentucky 42141

Natural Gas

Company serving Greensburg - Western Kentucky Gas Company

Source of supply - Tennessee Pipeline Company

Size of transmission mains - 26 inches (supplier); 4 inches (distributor)

Distribution mains - 4 and 2 inches

Distribution pressure - 4 ounces to 60 psi

Btu content - 1,000 per cubic foot; Specific gravity - .58

For rates and supplies contact:

Director of Industrial Utilization

Western Kentucky Gas Company

P. O. Box 646

Owensboro, Kentucky 42301

Other Fuels

Propane and Butane

Ugite Gas, Inc., Highway 61, Greensburg
Williams Energy Company, Columbia Road, Campbellsville
Pargas of Canmer, Inc., Highway 31 E, Canmer
Ugite Gas, Inc., Center Street, New Haven

Fuel Oils

Distillate fuel oil -

Atlantic Richfield Company, Water Street, Greensburg

Within 11 miles:

Ashland Petroleum Company
Gulf Oil Corporation
Haydon Oil Company
Hubbard Oil Company
Lewis J. Heber Oil Company, Inc. (Texaco)
Sun Oil Company
White Oil Company
W. W. Long (Gulf Oil)

Residual fuel oil - Arrangements must be made with the refinery

Low sulphur content coal - Available in Kentucky

WATER AND SEWERAGE

Water

Company serving Greensburg - Greensburg Water Works
Source - Green River
Treatment plant capacity - 792,000 gpd
Average daily consumption - 365,173 gallons
Peak daily consumption - 480,000 gallons
Type treatment - Quick mix, flocculation, settling, filtered,
chlorination, alum, lime, carbon, fluoridation
Storage capacity - 500,000 gallons
Size lines - 8, 6, 4, 2 and 1 inches
Average pressure - 45 psi
Average temperature - 50 degrees F.

MONTHLY WATER RATES FOR WHOLESALE AND INDUSTRIAL CONSUMERS

Minimum water bill \$3.80 per month

First	2,000 gallons or less	\$3.80 per month
Next	3,000 gallons	1.45 per M gallons
Next	5,000 gallons	.95 per M gallons
Next	10,000 gallons	.80 per M gallons
Next	25,000 gallons	.60 per M gallons
All over	45,000 gallons	.40 per M gallons

Name of water district - Green-Taylor Water District
Area served - Northern Green County and Western Taylor County
Date when water district began operating - 1967
Source of supply of treated water - Greensburg Water System
Average amount of water used in a 24-hour period - 140,000 gallons
Peak amount of water used in a 24-hour period - 200,000 gallons
Storage capacity - 160,000 gallons
Average pressure - 70 psi
Size lines - 8, 6, 4, 3 and 2 inches
Rates -

First	2,000 gallons	\$6.20
Next	4,000 gallons	2.50 per M gallons
Next	4,000 gallons	1.80 per M gallons
Next	15,000 gallons	1.30 per M gallons
Next	25,000 gallons	.75 per M gallons
Next	50,000 gallons	.60 per M gallons

Tap-on charge: Residential - \$140; commercial and industrial - varies with size of meter and cost of installation

Surface water sources - Green River

Average discharge - Green River at Greensburg 1,110 cfs (35 years, unadjusted, USGS)

Expected ground water yield - 50 to 200 gpm in westcentral portion of county; 5 to 50 gpm in northern and southern portions of county; 5 gpm or less in eastcentral portion of county

Sewerage

Company serving Greensburg - Greensburg Sewer System

Maximum design capacity - 864,000 gpd

Average daily flow - 390,000 gallons

Treatment - Primary and secondary

Type treatment - Aeration, settling, chlorination

Treated effluent discharged into - Green River

Size of sanitary mains - 8 inches

Rates - 50 percent of monthly water bill

Tap-on fee - \$100

LOCAL GOVERNMENT

City

Greensburg

Structure - Mayor - 4-year term; 6 councilmen - 2-year terms

Budget 1974-75 - General Fund \$ 75,000

Water and Sewer Fund 145,000

Fees and licenses - Unloading license - \$15 to \$50; building permits - \$10 for buildings assessed over \$5,000

County

Structure - County Judge - 4-year term; 4 magistrates - 4-year terms

Budget 1974-75 - General Fund \$115,890; Road Fund \$35,750

Assessed Value of Property, 1974

<u>Classes of Property</u>	<u>Greensburg</u>	<u>Green County</u>
Real Estate	\$10,690,500	\$52,560,350
Tangibles	3,237,975	8,501,950
Public Service	1,389,668	16,939,301

Property Taxes

Land and buildings are taxed by the state and may be taxed by local jurisdictions. The state rate is \$0.015 per \$100 of assessed valuation.

Tangible personal property owned by manufacturers (automobiles, trucks, finished goods, office furniture, office equipment) is taxed by the state at \$0.15 per \$100 and may be taxed by local jurisdictions.

Manufacturing machinery, raw materials inventories, pollution control equipment, and goods in process inventories are not subject to local taxation. The state rate is \$0.15 per \$100.

Property stored in public warehouses is not subject to local taxation. The state rate is only \$0.015 per \$100.

All property is assessed at 100 percent of fair cash value.

Local Property Tax Rate Per \$100 of Assessed Valuation, 1974*

<u>Taxing Jurisdiction</u>	<u>Greensburg</u>	<u>Green County</u>
County	\$.218	\$.218
School	.546	.546
City	.240	

Planning and Zoning

Joint agency - Greensburg-Green County Planning Commission
 Zoning enforced - 5-mile radius of Greensburg
 Subdivision regulations enforced - City only
 Local codes enforced - Building and housing
 Mandatory state codes enforced - Plumbing, National Fire Protection Association Code, National Building Code (for major buildings and residential construction containing more than 12 bedrooms per building)
 Other programs - Public housing

Safety

<u>Police</u>	<u>Greensburg</u>	<u>Green County</u>
Total staff	5 full-time 1 part-time	4
Radio-patrol cars	1	3
Other equipment	Police scanner, radar traffic control unit and 2 radios which allow communication with state, county and local law enforcement officials	4 radios which allow communication with state, county and local law enforcement officials

Fire

American Insurance Association Fire Rating	7	
Volunteers	24	24
Equipment:		
500 gpm pumpers	1	1
250 gpm pumper		1
Rescue truck	1	
Other	Auxiliary tank truck - 500 gallon	250 gpm auxiliary pump

*Kentucky Department of Revenue, Kentucky Property Tax Rates, 1974.

Rescue Service

Green County Civil Defense Unit:

Number of volunteers - 82

Equipment - 6 walkie-talkies; lights; privately owned vehicles, approximately 24 with mobile radio units

Personnel training - Approximately 50 percent of the squad has had First Aid training; organizational meetings are held once a month

Sanitation

Greensburg

Type service	Municipal
Fee charged:	
residential	\$2.75 per month - weekly pickup
business	\$25 per month - daily pickup
	5 per month - weekly pickup
	4 per month - weekly pickup (office only)
Trash pickup	On request
Disposal method	Sanitary landfill

EDUCATION

Public Schools

	<u>Green County</u>
Total Enrollment (1974- 75)	2, 100
Elementary	1, 470
High School	630
Student-Teacher Ratio	22 to 1
Elementary	23 to 1
High School	20 to 1
Percent High School Graduates to College	24. 6
Expenditures Per Pupil (1973-74)	\$601. 85
Bonded Indebtedness, June 30, 1974	\$1, 730, 000

Vocational Schools

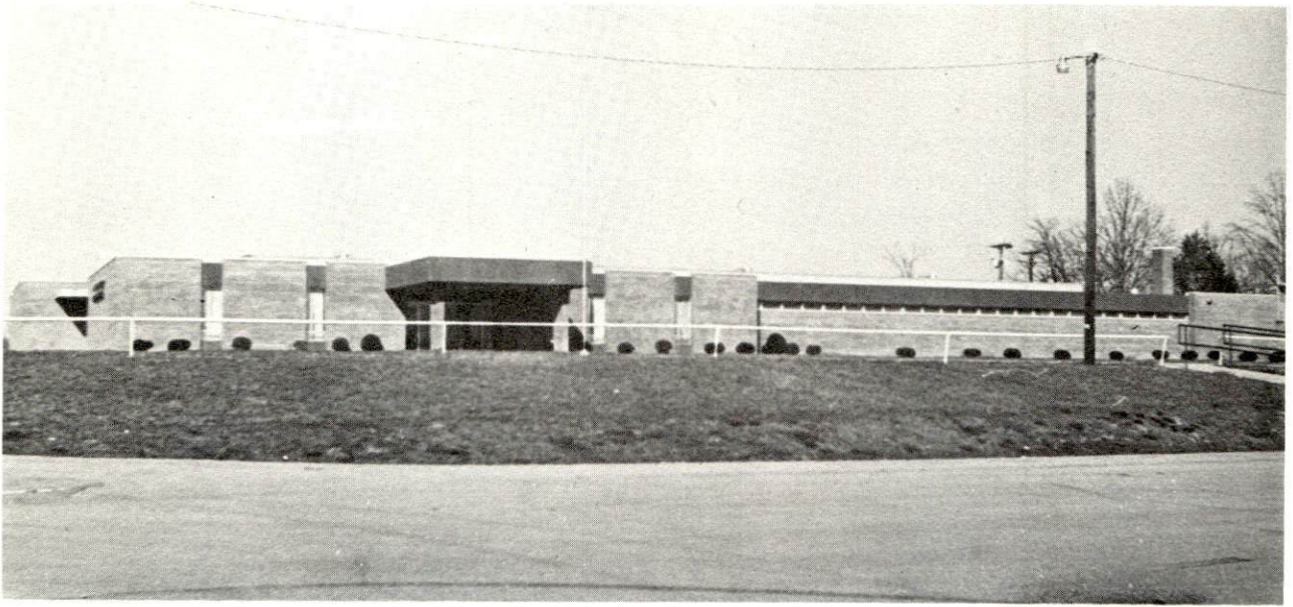
	<u>Nearest State School</u>	<u>Nearest Area Education Center</u>
Location	Elizabethtown State Vocational-Technical School Elizabethtown	Green County Area Vocational Education Center Greensburg
Miles Distant	38	
Curriculum	Appliance Repair Auto Mechanics Carpentry-Building Trades Drafting Electricity Welding Machine Shop* Industrial Machine Repair* Commercial Heating and Refrigeration* Commercial Foods* Health Careers* Radio-TV Repair*	Clerical Secretarial Health Careers Auto Body Repair Auto Mechanics Carpentry-Building Trades Electricity Machine Shop Welding

*New courses which will be offered beginning September, 1975.

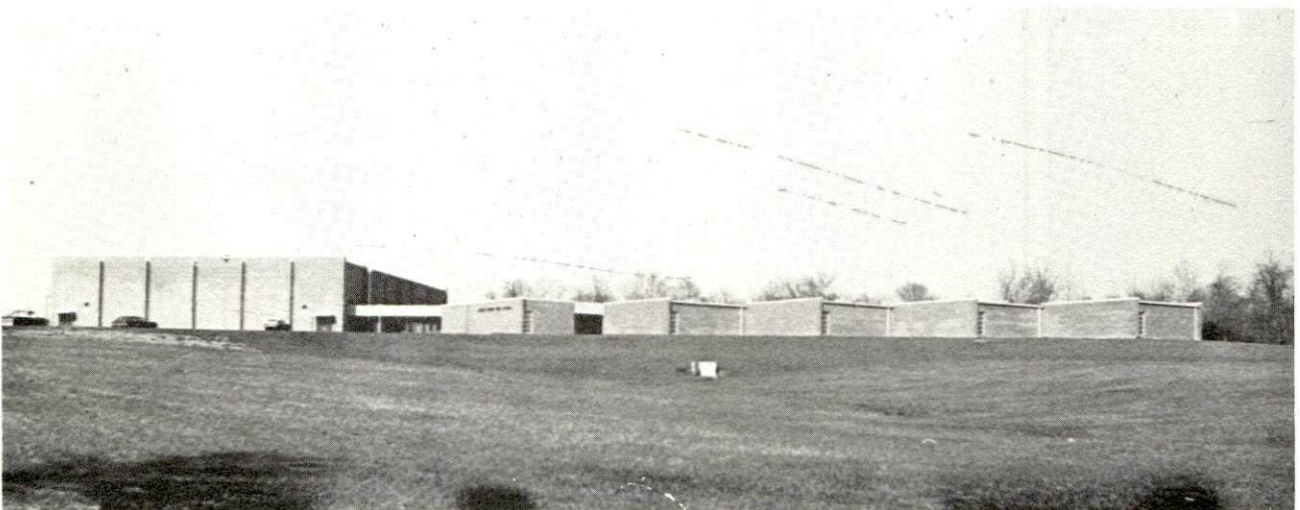
Arrangements can be made to provide training in the specific production skills required by an industrial plant. Instruction may be conducted either in the vocational school or in the industrial plant, depending upon the desired arrangement and the availability of special equipment.

Colleges and Universities

<u>Name</u>	<u>Area - Within 45 miles</u>		
	<u>Location</u>	<u>Enrollment (Fall, 1974)</u>	<u>Highest Degree Conferred</u>
Campbellsville College	Campbellsville	678	Baccalaureate
Lindsey Wilson Junior College	Columbia	308	Associate
Elizabethtown Community College	Elizabethtown	978	Associate
Saint Catharine Junior College	St. Catharine	125	Associate



TIM LEE CARTER VOCATIONAL SCHOOL



GREEN COUNTY HIGH SCHOOL

HEALTH

Hospitals

<u>General Hospital</u>	<u>Location</u>	<u>Beds</u>
Jane Todd Crawford Memorial Hospital	Greensburg	44

General hospital facilities - X-ray, laboratory, operating room, emergency room, emergency outpatient service, recovery room, oxygen, electrically operated beds, pharmacy, air conditioning, labor and delivery room, nursery

Medical staff - 5 medical doctors, 8 registered nurses, 10 licensed practical nurses, 1 surgeon

Nursing Homes

	<u>Number</u>	<u>Beds</u>
Intermediate care home	1	76*

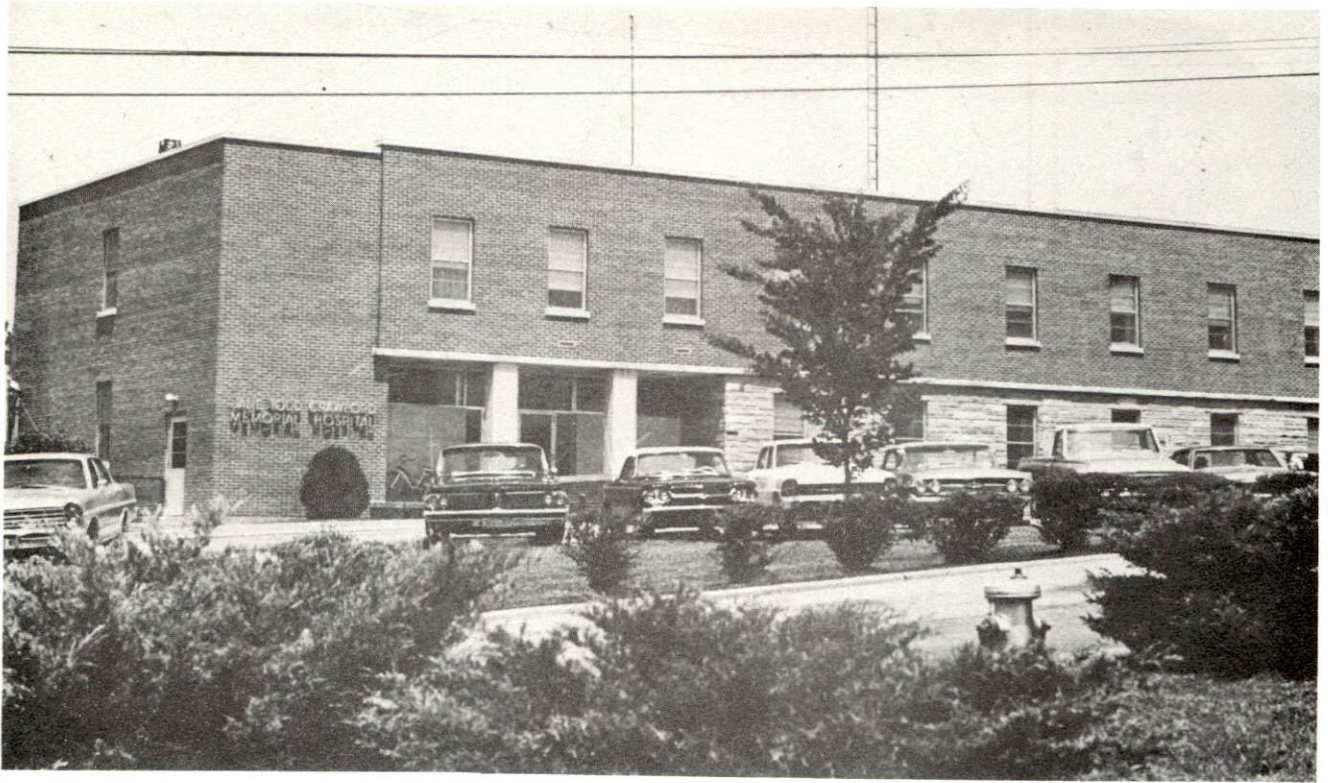
Public Health

Facility - Green County Health Department

Staff - Nurse, sanitarian, clerk

Budget 1973-74 - \$25,023.35

*50 more beds will be available on October 1, 1975, with the completion of a new wing.



JANE TODD CRAWFORD
MEMORIAL HOSPITAL



GREEN HILL MANOR
NURSING HOME

OTHER LOCAL FACILITIES

Communications

Telephone - General Telephone Company of Kentucky
Services - Standard

Telegraph - Western Union (Lebanon office)
Services - Telephone

Postal - U. S. Post Office
Class - Second
Mail received - Twice daily
Mail dispatched - Twice daily

Newspapers - Greensburg Record-Herald
Weekly and circulation - 3,950
Other papers received from - Campbellsville and Louisville, Kentucky

Radio - WGRK
Stations received from - Campbellsville, Glasgow, Lebanon and
Louisville, Kentucky; Nashville, Tennessee; FM cable available

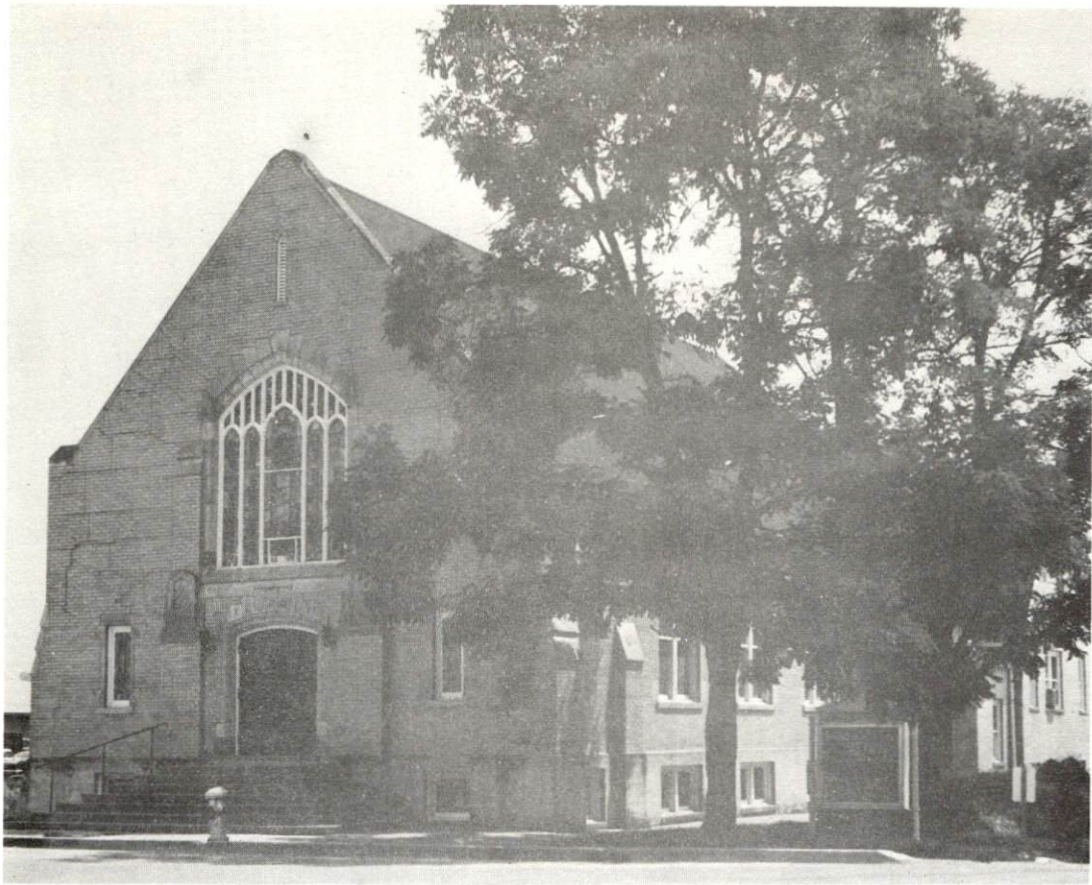
Television -
Cable service
Reception from - Bowling Green, Lexington and Louisville, Kentucky;
Nashville, Tennessee
Kentucky Educational Television - Channel 23, Elizabethtown transmitter

Library Services

Public library - Green County Public Library
Size collection - Approximately 16,500 volumes
Circulation, 1973-74 - 22,210 (library); 53,929 (bookmobile)
Services - Paintings, records, film strips, bookmobile

Religious Institutions

Number of churches - 10
Denominations - Baptist, Catholic, Christian, Church of Christ,
Cumberland Presbyterian, Methodist, Presbyterian USA
Nearest Synagogues - Louisville, 78 miles distant
Congregations - Adath Israel (reform), Adath Jeshurun (conservative),
Anshei Sfard (orthodox), Keneseth Israel (orthodox), Brith Sholom (reform)



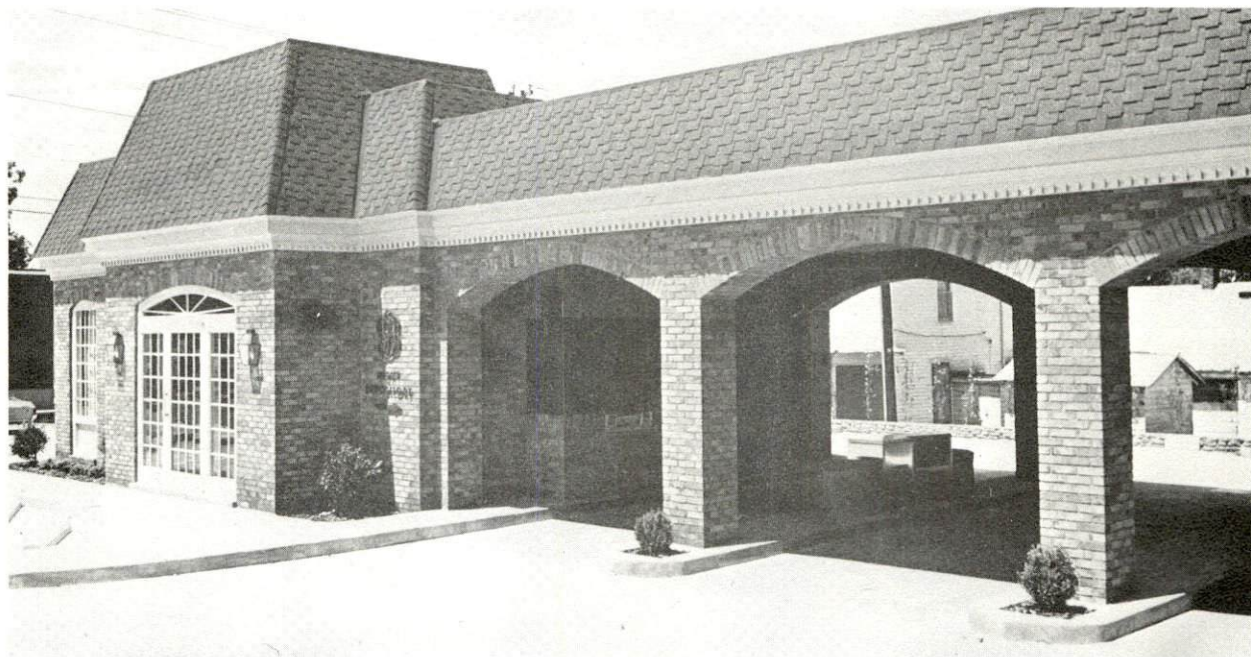
METHODIST CHURCH



BAPTIST CHURCH



FIRST FEDERAL SAVINGS AND LOAN ASSOCIATION



GREENSBURG DEPOSIT BANK



THE PEOPLES BANK & TRUST COMPANY

Financial Institutions

<u>Banks</u>	<u>Statement as of December 31, 1974</u>	
	<u>Assets</u>	<u>Deposits</u>
Greensburg Deposit Bank	\$18,235,181.61	\$16,257,091.77
The Peoples Bank and Trust Company	17,061,659.62	15,559,016.44
<u>Savings and Loan Associations</u>	<u>Assets</u>	<u>Shared Accounts</u>
First Federal Savings and Loan Association	\$39,847,798.84	\$34,454,856.33

Hotels and Motels

Total number - 1

Units - 48

Clubs and Organizations

Business and Civic - Greensburg-Green County Chamber of Commerce,
Jaycees, Lions, Rotary

Fraternal - American Legion, Masons, Am-Vets

Women's - Eastern Star, American Legion Auxiliary, Homemakers,
Business and Professional Women, Woman's Club, Garden Club,
Art Club, Jane Todd Hospital Auxiliary, Jaycettes

Youth - Boy Scouts, Girl Scouts, Cub Scouts, Babe Ruth League, Little
League, Beta Club, Co-ed Y, FTA, FHA, FFA and 4-H

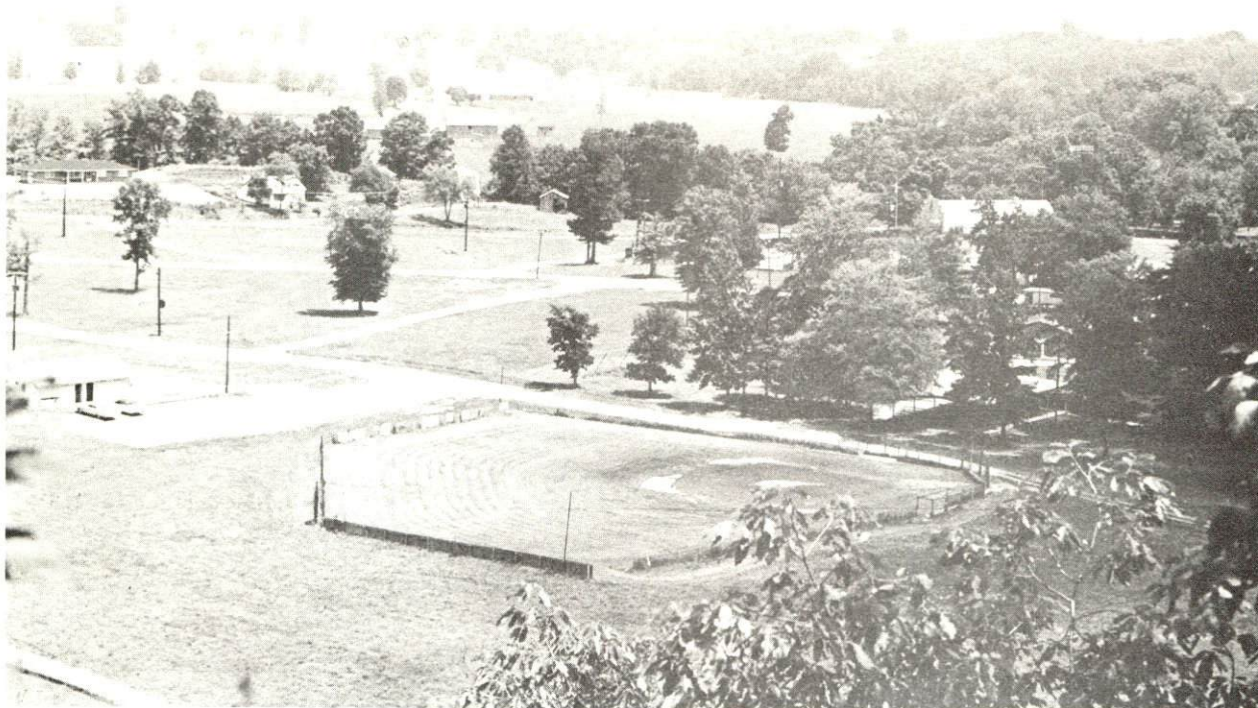
RECREATION

Local

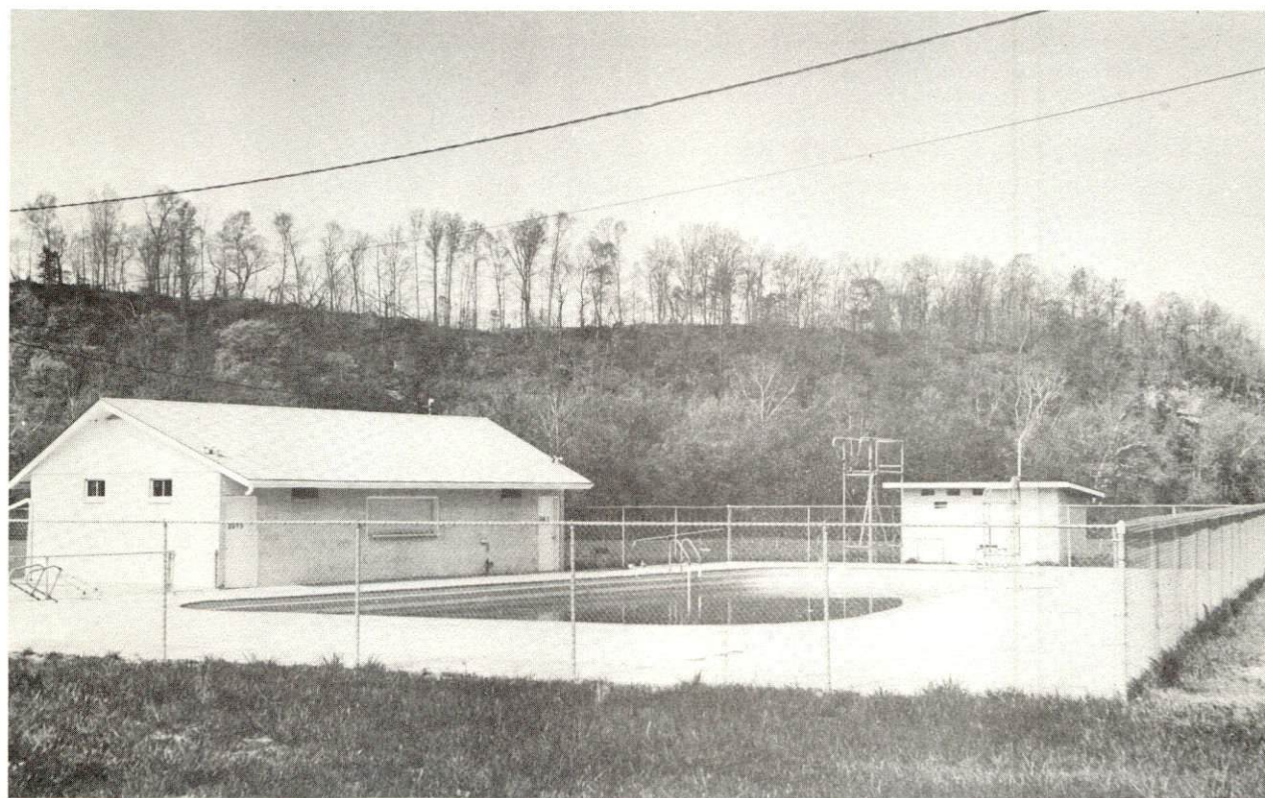
	<u>Greensburg</u>	<u>Green County</u>
Public Recreation Facilities		
Supervised program -	Yes	
Park -	1	
Playgrounds -	3	
Swimming pool -	1	
Tennis courts -	4	
Baseball diamonds -	4 (3 lighted)	
Softball diamonds -	3 (1 lighted)	3 (2 lighted)
Football field -	1 (lighted)	
Other -	20 horseshoe pits	Archery range, Green County Sportsman Club (2 registered trap ranges), Green County Saddle Club
Private Recreation Facilities		
Country club -	1	
Golf course -	1	
Movie theater -		1 drive-in
Other -		2 skating rinks
Tourist Attractions		
Jeremiah Abell's Log Cabin, Long Hunters Camp, Old Green County Courthouse, Historical Circuit Court Clerk's Office, Annual Green River Canoe Race (25 miles), Mid-Kentucky State Appaloosa Horse Show, Cow Days Celebration (carnival), and 120 miles of fishing streams, 20 miles of which are stocked with rainbow trout		

Area (Within 40 miles)

Green River Lake State Park
 Abraham Lincoln Birthplace National Historical Site
 Lake Cumberland State Resort Park
 Mammoth Cave National Park



AMERICAN LEGION PARK



MUNICIPAL SWIMMING POOL

AGRICULTURE - NATURAL RESOURCES - CLIMATE

Agriculture*

	<u>Green County</u>	<u>Labor Market Area</u>
Total land area (acres)	180,480	1,219,200
Percent of area in farm land	87.0	84.3
Number of farms	1,607	10,002
Average size of farms (acres)	97.7	102.8
1969 value of all farm products	\$ 8,813,895	\$ 50,565,842
Value per farm	5,485	5,056
Total crop sales	4,105,795	22,187,126
Total livestock & livestock products	4,624,608	27,946,306
1972 agricultural production included:		
Burley tobacco (lbs.) (est.)	4,300,000	23,621,000
Corn for grain (bu.)	936,000**	5,664,300**
Cattle and calves (number)	38,900**	240,400**
Hogs and pigs (number)	8,100**	57,600**
Milk production, 1971 (lbs.)	46,240,000	301,000,000

Natural Resources

Principal mineral resources	Limestone, petroleum
Other mineral resources	Natural gas
Acres of commercial forest land	59,700
Most abundant tree species	White oak, red oak, hickory, yellowpoplar, beech, hard maple, ash

*U. S. Department of Commerce, Bureau of the Census, Census of Agriculture, 1969. U. S. Department of Agriculture and Kentucky Department of Agriculture, Kentucky Agricultural Statistics, 1972.

**Preliminary figures.

Climate*

Green County

Temperature

Annual mean (30-year record)	55.2 degrees
Average annual 1973	56.6 degrees
Record highest, July, 1966** (10-year record)	98.0 degrees
Record lowest, January, 1972 (10-year record)	-11.0 degrees
Normal heating degree days (30-year record)	4,729
(Heating degree day totals are the sums of negative departures of average daily tem- peratures from 65 degrees F.)	

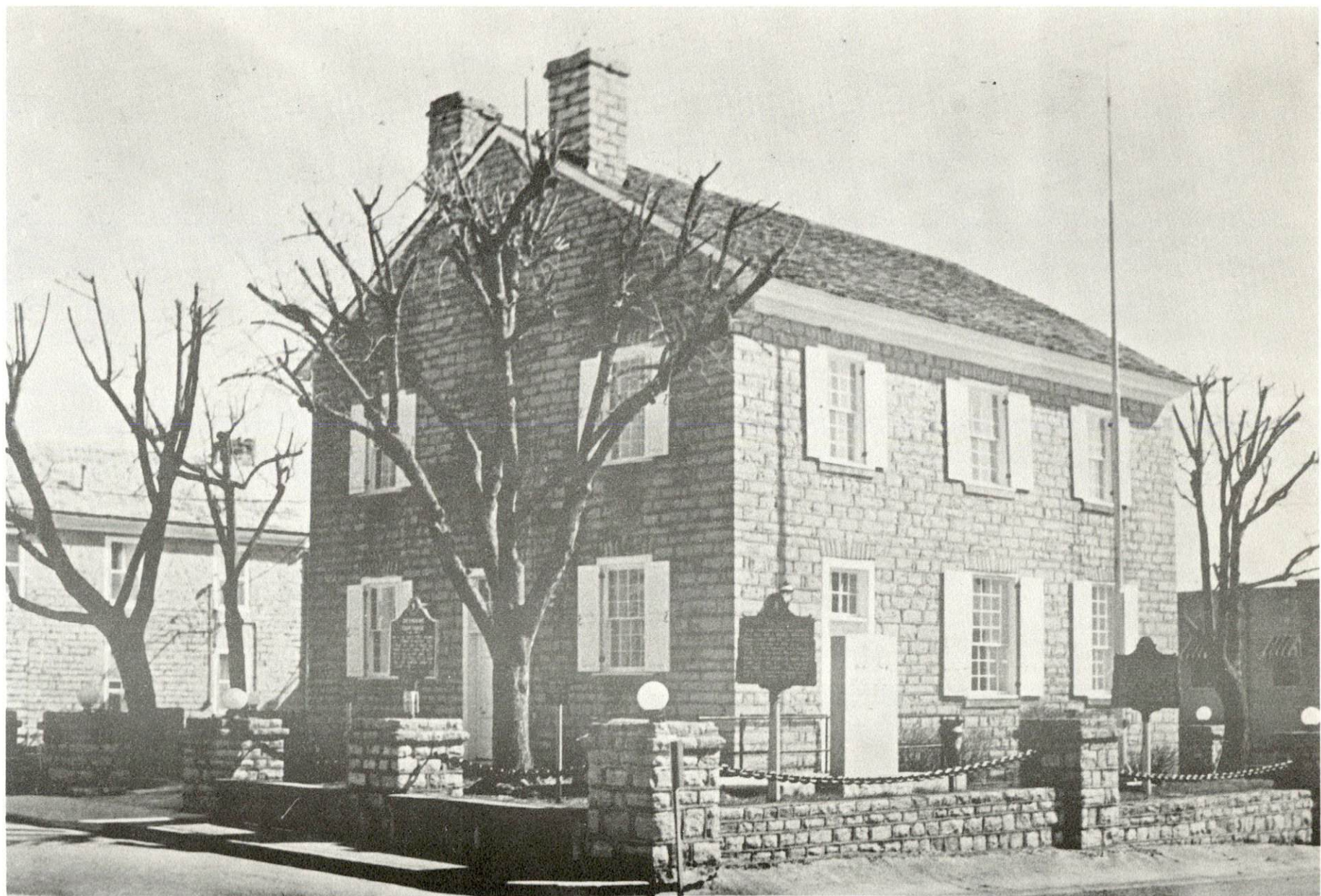
Precipitation

Mean annual total (30-year record)	44.49 inches
Mean annual snow and sleet (29-year record)	15.90 inches
Total precipitation 1973	50.92 inches
Mean number days precipitation (.01 inch or more) (29-year record)	129
Average number days thunderstorms (29-year record)	47

Prevailing winds (17-year record) South

*U. S. Department of Commerce, Environmental Science Services
Administration, Climatological Data, 1973. Station of record: Lexington.

**Also on earlier dates, months or years.



GREEN COUNTY COURTHOUSE
OLDEST COURTHOUSE WEST OF THE ALLEGHENIES

GREEN COUNTY HISTORICAL POINTS OF INTEREST

1. The oldest courthouse west of the Alleghenies was finished in 1804. It is the second Green County Courthouse and was designed by Stone Hammer Metcalfe, who later became Governor of Kentucky.

2. In the far east room of the bank building President Andrew Jackson spent the night. Jackson's diary contains this entry, "September 26, 1832, arrived at Greensburg late in the day, spent the night here. September 17, 1832, spent day at Brents Tavern on Little Barren River."

3. New Athens Academy was the first organized in 1805 and taught by Reverend John Howe. This academy was in the east room of the old courthouse and was later moved to the Clerk's office, the stone building adjacent to the present City Hall.

4. General Hobson's Home. Hobson fought in the War with Mexico and organized the 13th Kentucky Volunteers, Infantry in the Civil War. Hobson was the man who captured John Hunt Morgan.

5. William H. Herndon, Lincoln's law partner, was born here on Christmas Day, 1818.

6. Mentor Graham, "The Man Who Taught Lincoln," was headmaster of the Greensburg School from 1818 to 1823.

7. General William T. Ward's home. General Ward served in the Mexican War and organized Regiments 13, 21, 27 in Greensburg. Men under his command were accorded the distinction of being issued the first Spencer repeating rifles ever used in battle. At the Battle of Resaca, Georgia, he lost 963 men in a 20 minute engagement. Thus he acquired the dubious distinction of being second only to Pickett at Gettysburg in the number of men lost.

8. Camp Ward was the most southern and western Union Camp in the Civil War. Men from this camp fought the first battle of the Civil War in Kentucky at the Battle of Hutchinson's Farm in Hart County.

9. Head of steamboat navigation on Green River. In 1826, the steamboat "Sally Anderson" docked here.

10. Home of Jane Todd Crawford. This was the woman upon whom the world's first successful ovariectomy was performed. Mrs. Crawford rode horse back from here to Danville where Dr. Ephraim MacDowell removed a 23-pound tumor in a 30-minute operation without the benefit of an anesthetic.

11. Here in 1768 a group of hunters from the Yadkins and Clinch River Valleys of North Carolina camped and hunted for two years. Thus the name "long hunters." It was their glowing description of the good land and abundance of game that more than anything else led the first pioneers to Kentucky.

12. At a large spring here a Mr. Gray built a station or "Stockade" some time prior to 1775.

13. A well drilled for salt in 1825 produced natural gas in great quantities. It accidentally caught on fire in 1826 and burned continuously for over 100 years.

14. Pitman's Station located on the bluff overlooking "the narrows of Pitman Creek," was one of the earliest stations in Kentucky and a stopping place for pioneers who traveled the Cumberland Trace.

15. Ninian Edwards, scholar and friend of Lincoln, jurist, Governor of Illinois twice, and ambassador to Mexico, was admitted to the Greensburg bar in 1795. His home in Greensburg has never been located.

16. David Rice, the first Presbyterian Missionary west of the Alleghenies, acquired the title "Father Davie Rice," probably as a title of respect. He owned 400 acres of land and lived and died here. This excerpt is from a letter he sent to the Philadelphia Presbytery: "The founding of a church here is difficult, since I find few people inclined either toward man or God."

17. Home of Nathaniel Owens, the first sheriff of Green County in 1792. He was the father of Mary Owens, Lincoln's Sweetheart, the character from the book Lincoln's Other Mary, written by Gerald McMurtary. Also the site of the Brush Creek Academy where Mentor Graham, "The Man Who Taught Lincoln," was born and received his formal education.

18. Site of old iron furnace. Pig iron was shipped to New Orleans by flatboat around 1812. Also the site of the only beheading to ever take place in Green County.

19. Skaggs Station, site of the last known Indian raid in Green County.

20. The Cumberland Trace, the road over which most of the pioneers moved westward across Kentucky. It came from Cumberland Gap to Logan's Station. From here down Rolling Fork River over Muldrough's Hill to Robinson's Creek, down the Creek to Elkhorn. Over the hill to Buchhorn Creek then to the south fork of Pitman Creek, over the hill to Trace Creek (Happyville), down Trace Creek to a Ford across Green River and crossed Little Barren River at Elk Lick Ford, then on West.

As early as 1840, Green County's population had reached 14,212. Since that time, the population has slightly fluctuated, with 11,871 in 1880, 12,255 in 1900, and 11,261 in 1950. Slight decreases in population were recorded during the 1950 and 1960 decades. In 1970, the county had a population of 10,350.

Agriculture provided 1,550 of the county's 4,310 jobs in 1973. Manufacturing employment increased 385 percent or 385 jobs between 1964 and 1974. Largest of the county's firms are Clark Casual Furniture, Inc., Edmonton Manufacturing Company, Greensburg Manufacturing Company, and Anaconda Wire and Cable Company, Inc.

This copy has been prepared by the Kentucky Department of Commerce,
Division of Research and Planning, and the cost of printing paid from
state funds.