

1974

Industrial Resources: Greenup County

Kentucky Library Research Collections
Western Kentucky University, spcol@wku.edu

Follow this and additional works at: https://digitalcommons.wku.edu/greenup_cty

 Part of the [Business Administration, Management, and Operations Commons](#), [Growth and Development Commons](#), and the [Infrastructure Commons](#)

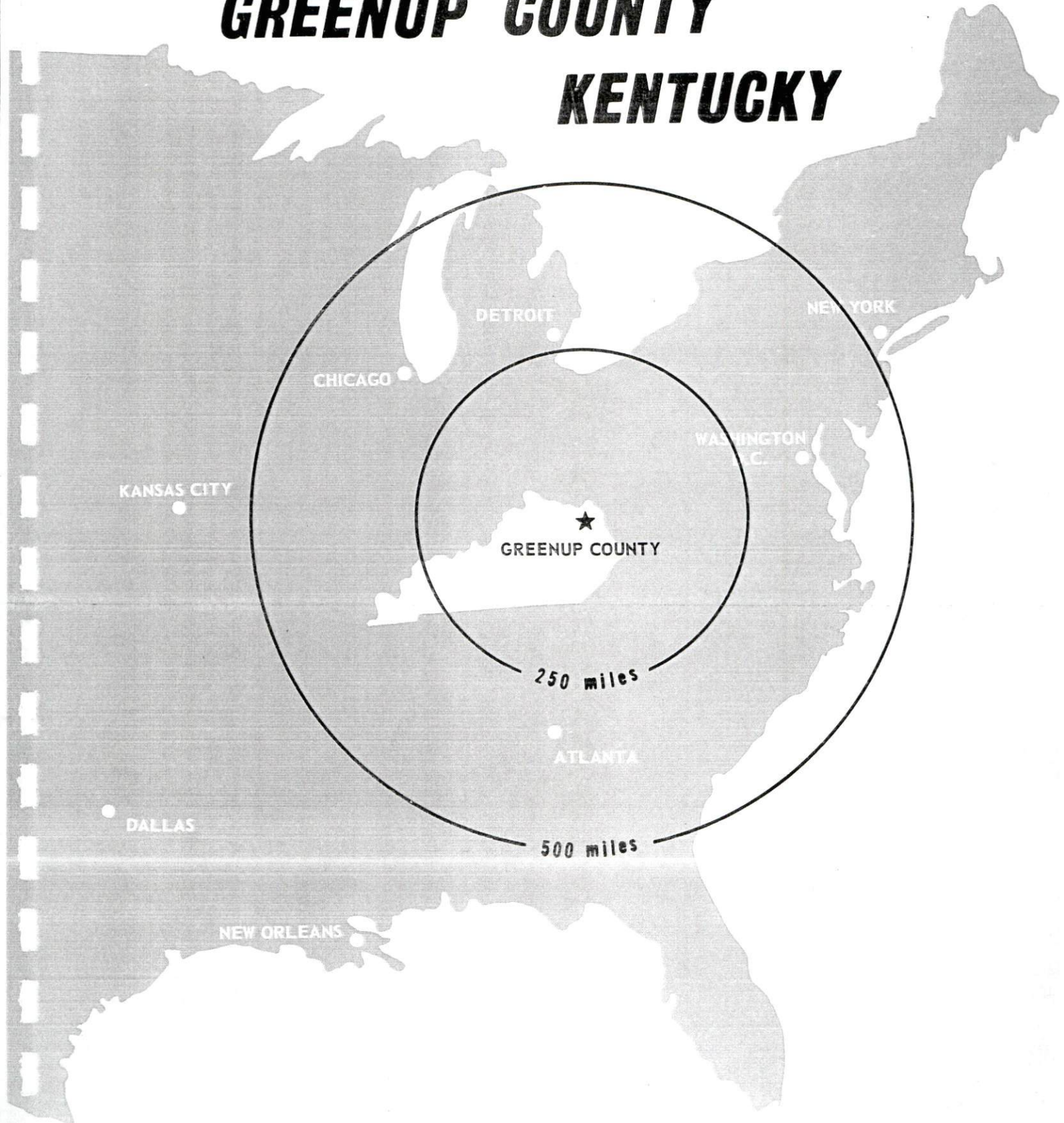
Recommended Citation

Kentucky Library Research Collections, "Industrial Resources: Greenup County" (1974). *Greenup County*. Paper 9.
https://digitalcommons.wku.edu/greenup_cty/9

This Report is brought to you for free and open access by TopSCHOLAR®. It has been accepted for inclusion in Greenup County by an authorized administrator of TopSCHOLAR®. For more information, please contact topscholar@wku.edu.

INDUSTRIAL RESOURCES

GREENUP COUNTY ***KENTUCKY***



INDUSTRIAL RESOURCES
GREENUP COUNTY, KENTUCKY

Prepared by
The Kentucky Department of Commerce
in cooperation with
The Greenup County Industrial Foundation

1974

This copy has been prepared by the Kentucky Department of Commerce,
Division of Research and Planning, and the cost of printing paid from
state funds.

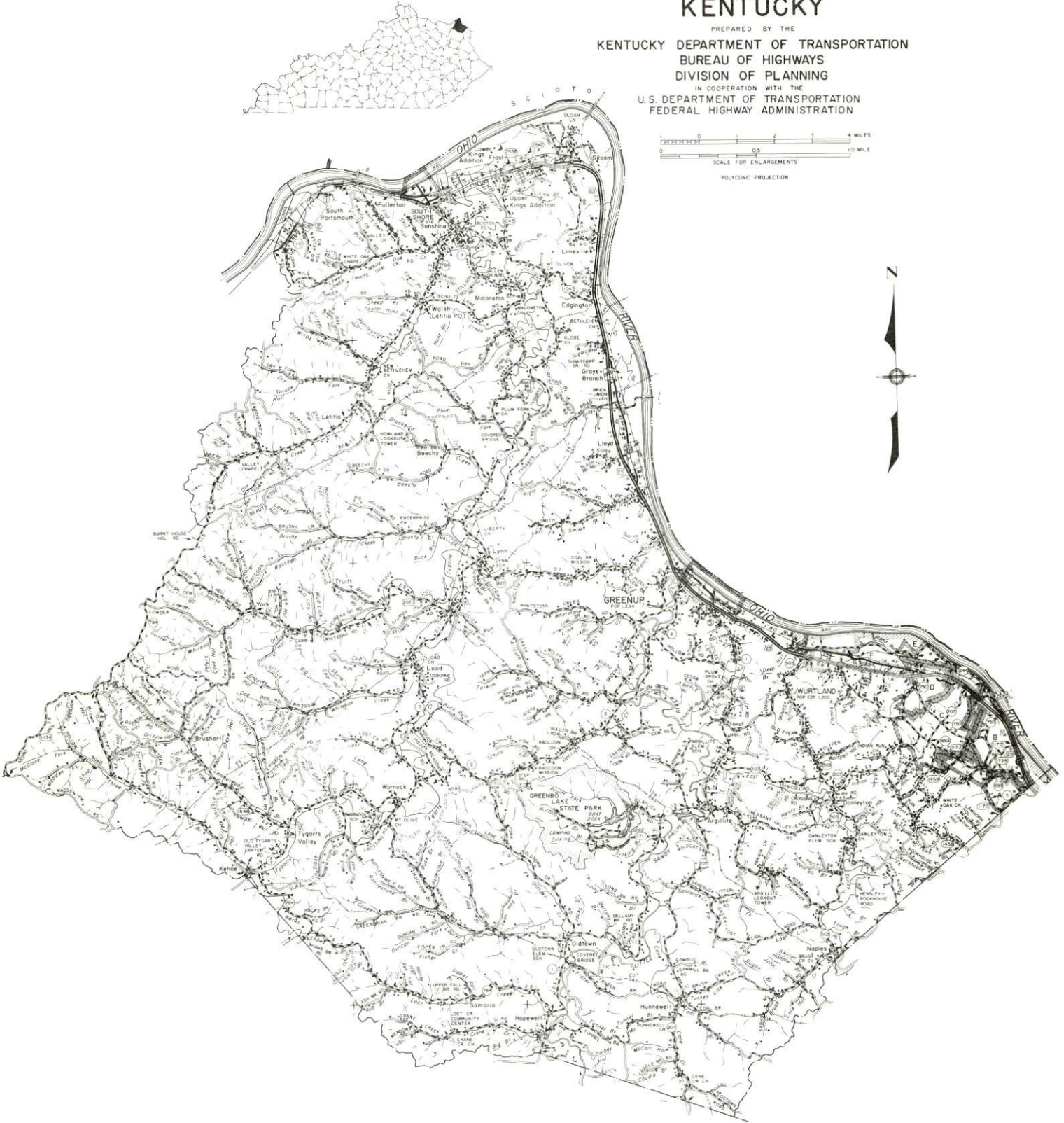
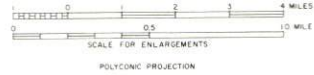
TABLE OF CONTENTS

<u>Chapter</u>	<u>Page</u>
INDUSTRIAL SITES	i
GREENUP COUNTY, KENTUCKY - A RESOURCE PROFILE.	1
THE LABOR MARKET.	8
Population Trends	8
General Employment Characteristics, 1973	8
Manufacturing Employment Trends by Industry	9
Greenup County Manufacturing Firms, Their Products and Employment	9
Wages.	16
Labor Organizations	17
Estimated Male Labor Supply	17
Estimated Female Labor Supply	17
Per Capita Personal Income	18
TRANSPORTATION	19
Rail.	19
Truck Service	19
Air	20
Water	21
Bus	21
Taxi	21
Rental Services	21
POWER AND FUEL	22
Electricity.	22
Natural Gas	22
Other Fuels	23
WATER AND SEWERAGE	24
Water	24
Sewerage	28
LOCAL GOVERNMENT	31
City.	31
County.	32

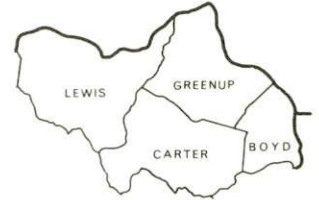
<u>Chapter</u>	<u>Page</u>
Assessed Value of Property, 1974-75	32
Property Taxes	32
Local Property Tax Rate Per \$100 of Assessed Valuation, 1974	33
Planning and Zoning	33
Safety	34
Police	34
Fire	34
Sanitation	35
 EDUCATION	 37
Public Schools	37
Vocational Schools.	37
Colleges and Universities	38
 HEALTH	 40
Hospitals.	40
Nursing Homes	40
Public Health.	40
 OTHER LOCAL FACILITIES	 41
Communications.	41
Library Services	41
Religious Institutions	42
Financial Institutions	42
Hotels and Motels	42
Clubs and Organizations	42
 RECREATION.	 43
Local	43
Area.	45
 AGRICULTURE - NATURAL RESOURCES - CLIMATE.	 46
Agriculture.	46
Natural Resources.	46
Climate	47
 HISTORY	 48

GENERAL HIGHWAY MAP GREENUP COUNTY KENTUCKY

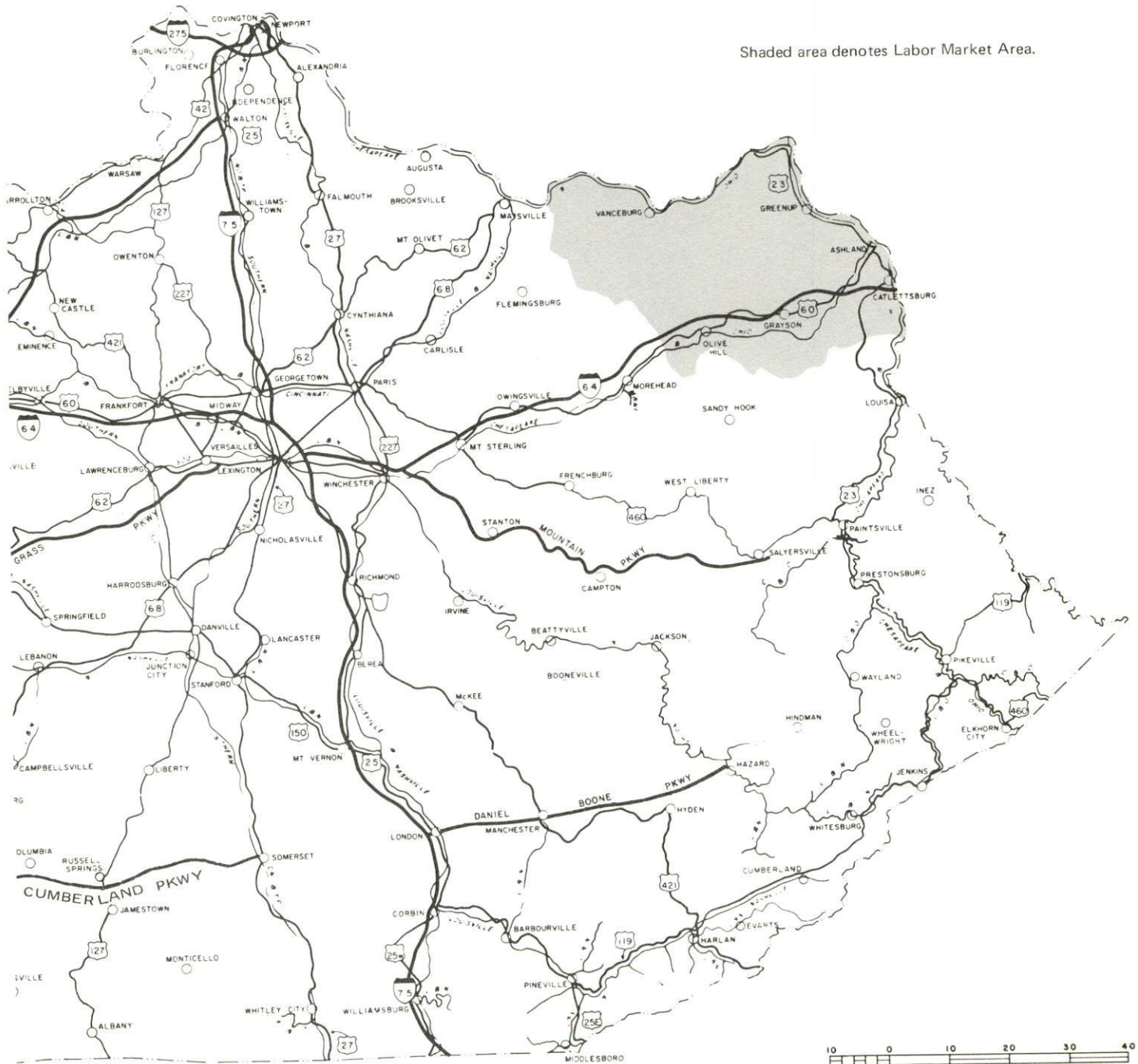
PREPARED BY THE
KENTUCKY DEPARTMENT OF TRANSPORTATION
BUREAU OF HIGHWAYS
DIVISION OF PLANNING
IN COOPERATION WITH THE
U.S. DEPARTMENT OF TRANSPORTATION
FEDERAL HIGHWAY ADMINISTRATION



GREENUP COUNTY LABOR MARKET AREA



Shaded area denotes Labor Market Area.



GREENUP COUNTY, KENTUCKY - A RESOURCE PROFILE

Greenup County is located along the Ohio River in northeastern Kentucky. It is bordered by Boyd, Carter and Lewis Counties, Kentucky, and Scioto and Lawrence Counties, Ohio. The southeast portion of Greenup County, where the towns of Flatwoods, Raceland, Russell and Worthington are located abuts the heavily industrialized Ashland, Kentucky-Ironton, Ohio area. Huntington, West Virginia is located approximately 20 miles east of the county line. The northern portion of the county, where South Shore is located also adjoins an industrialized metropolitan area, Portsmouth, Ohio. The town of Greenup on the Ohio River and the central portion of the county are less industrialized. Greenbo Lake State Resort Park located in the central part of the county makes Greenup County a tourist center in addition to a growing industrial center.

Greenup County with a land area of 351 square miles, had a 1970 population of 33,192 and grew at more than twice the state rate from 1960 to 1970. Flatwoods, the largest city, had a 1970 population of 7,830. The towns of Greenup, the county seat, Raceland, Russell, Worthington and Wurtland each had populations exceeding 1,000.

The Economic Framework

Total employment in Greenup County averaged 3,000 in 1973 with trade and services providing 1,245 jobs; government 940, and manufacturing 380 jobs. The employment figures do not include employees of Armco Steel Corporation which has production facilities located in Greenup County. Major industrial products include refractory products and primary metals. A major employer in Greenup County is the Raceland Car Shop which employs approximately 600 persons in the repair of freight cars. By 1975 an additional 600 persons will be employed in building new cars also.

Per capita personal income in 1972 was \$2,794 or \$815 below the Kentucky average. Per capita income increased by 152 percent from 1962 to 1972, compared with a state average of 106 percent.

The Greenup County labor market area includes the Kentucky counties of Greenup, Boyd and Lewis and the Ohio Counties of Scioto and Lawrence. Total employment in the Kentucky portion of the labor market area average 37,970 in 1973. Trade and services provided 9,180 jobs; manufacturing 7,955; and government 4,240. Manufacturing employment in the area is heaviest in the primary metals industry. Manufacturing employment has increased by 46 percent or by 3,691 jobs since 1963 with the sharpest gain in the primary metals industry.

Despite important industrial gains in recent years the area still has a deficit of over 7,950 manufacturing jobs when measured against the national industrial employment-population ratio. This indicates an area where the potential for additional manufacturing is good.

Resources for Growth

1. Labor Supply - There is a current estimated labor supply of 4,450 men and 8,520 women available for industrial jobs in the Kentucky portion of the labor market area. Workers who would commute from nearby Ohio and West Virginia counties expand this current estimated labor supply. In addition, 6,410 young men and 6,175 young women in the Kentucky portion of the labor market area will become 18 years of age by 1980 and will be potentially available for employment.

2. Transportation - The local water, rail and air transportation is excellent. A nine-foot navigation channel is maintained along the Ohio River which forms the north and east boundary of the county. Likewise, the area is a rail center for the Appalachian region. The Chessie System maintains a large car shop and classification facility near Raceland. The Chessie System tracks lie along the southern shore of the Ohio River while the Norfolk and Western Railway tracks stretch along the northern shore. Commercial air service is available in Huntington, West Virginia, only minutes away. Although the Ashland-Boyd County and the Portsmouth, Ohio Airports do not have scheduled air service, the runways are capable of accommodating small jet aircraft. The Greenup County area is connected to the state's highway network and Interstate 64 via U.S. Highway 23, a four-lane highway scheduled for completion by summer, 1975.

3. Energy - Electricity is supplied to Bellefonte, Flatwoods, Greenup, Kenwood, Raceland, Russell, South Shore, Worthington, Wurtland and portions of Greenup County along the Ohio River by the Kentucky Power Company. The Western portion of Greenup County is supplied by the Grayson RECC. The Columbia Gas Company, supplied by the Columbia Gas Transmission Company, provides natural gas service to Bellefonte, Firebrick, Flatwoods, Greenup, Kenwood, Lloyd, Raceland, Russell, South Portsmouth, South Shore, Worthington and Wurtland. Four distributors of propane and butane and five distributors of distillate fuel oil serve the area. The raw water supply from the Ohio River is more than adequate for continued growth.

4. Education - Greenup County has three school systems. The Ashland State Vocational-Technical School located only 14 miles from Greenup, offers courses in 17 areas. An area education center is located in South Shore and offers courses in 8 areas.

Greenup County is located within 50 miles of two universities, two university extension colleges and a community college. Marshall University is located in Huntington, West Virginia, approximately 20 miles away, and Morehead State University is located in Morehead, Kentucky, 50 miles from Greenup. Ashland Community College is located in neighboring Boyd County, and two extensions of Ohio University are located across the river in Ironton and Portsmouth.

Programs for Improvement

Industrial:

National Mine Service Company has broken ground for a \$5 million mining machinery plant east of Greenup. Expected employment is 200. In addition, Armco Steel announced a multi-million dollar expansion of its Greenup County production facilities. The expansion will add a total of 1.1 million tons of additional raw steel capacity and employ more than 300 additional persons by 1977.

Education:

The Greenup County School System recently completed a \$4 million high school, added a library to the Wurtland Elementary School and built a new gymnasium. There are plans to add special education classes and Kindergarten classes. A project to renovate heating and lighting systems in all county elementary schools has begun with the completed renovation of the heating system in one school. There are plans to construct two new middle schools.

The Raceland-Worthington Independent School System has added five new class offerings at the high school and a special education class at the elementary level. A new elementary school cafeteria will be completed in the 1974-75 school year.

The Russell Independent School System has recently completed a \$100,000 library and audio visual center and added libraries to all four elementary schools. Bus service has been upgraded, cutting the maximum transit time for any student to fifteen minutes. A new one million dollar vocational center is scheduled to open in the fall of 1975, providing studies in eight subject areas. Changes in curriculum include the addition of reading laboratories at the middle school and high school, a math improvement project at the middle school and phased English at the high school. A new program called "bachelor living" which provides rudimentary home economic information has been added at the high school. A locally funded program in adult education is conducted by the system.

Utility:

Water Systems

An estimated \$2 million project by the Greenup Water and Sewer Commission will extend water service to the Greenup Dam northwest of Greenup and to Argillite along Route 1. The new treatment plant will have a capacity of 2 million gallons per day and a new 400,000 gallon standpipe will be built. As approved, service will be extended further out of Greenup along U. S. 23, possibly to serve the community of Lloyd.

The South Shore Water Works Company extended approximately 7 miles of new lines along Route 7 and to East Tygert and replaced approximately 7 miles of old lines with a new 6-inch line. The construction of an elevated tank with storage capacity of 150,000 gallons is in progress.

The Wurtland Water District, which the city of Wurtland plans to purchase, is extending an 8-inch line along U. S. 23 to serve the National Mine Service Company.

The City of Worthington completed its \$350,000 municipal water works in 1971.

The City of Raceland recently installed approximately one mile of water lines to serve a new subdivision, built a new storage tank and is installing a new master meter.

Sanitary Sewerage Systems

The \$3.3 million, Sanitation District #1 will be in operation by April, 1975. It will provide service to Kenwood, a residential area of Russell and Bellefonte.

The City of Raceland completed its \$505,607 sewer project in 1974. A new pumping station was built and 28,000 feet of 8-inch sewer mains were installed.

The cities of Raceland, Russell and Flatwoods are making a study of a new system to serve the three communities. The system will be able to handle Wurtland and Worthington also. The grant for the sewer study has been approved.

The Worthington Water and Sewer Works extended service to two new subdivisions.

The South Shore Municipal Sewer Plant put in a new lift station,, purchased a chlorinator and installed approximately one mile of new lines.

The Greenup Water and Sewer Commission plans to install approximately 1 1/5 miles of new lines.

Natural Gas

Columbia Gas has relocated approximately 20 miles of distribution and transmission lines along new U. S. Highway 23.

Transportation:

The highway network of Greenup County is being upgraded. By summer of 1975, a four-lane highway will extend along the Ohio River from South Shore to Ashland. A \$785,000 project to improve the Ashland-Boyd County Airport was completed in Fall, 1974. The runway was strengthened and lengthened to 5,600 feet, a parallel taxiway was constructed, and a VASI System, a MIRL System and taxi lights were installed.

Community Improvements

Bellefonte

By June 30, 1975, the project to resurface all city streets will be completed.

Flatwoods

Flatwoods constructed 50 units of public housing, five apartment buildings and a new post office. Several new subdivisions have been opened and several commercial buildings constructed in the last few years. A rest home with 120 beds is planned. The municipal building will be renovated. The park will be upgraded and new public facilities will include tennis courts and a swimming pool.

Greenup

Several new businesses have opened and other downtown businesses have been remodeled. The city purchased a school building which has been partially renovated for use as the municipal building. There are plans to use the auditorium for a city meeting place. Greenup has purchased a new police cruiser and a base radio station.

Raceland

The renovation of the city building, sponsored by local civic clubs and the city, will be completed in December, 1974. The Women's Club is planning to landscape and equip the park. The city plans to repair curbing and sidewalks throughout the city.

Russell

Recent community improvements include the further development of the shopping center to add a grocery, department store (K-mart) and 30 mini-malls and the construction of several new apartment buildings and condominiums. In addition to the condominiums, Ashland Oil also built its new executive headquarters in Russell. Radio equipment has been purchased for the fire department and plans call for the construction of a new fire department and the purchase of a new fire truck.

South Shore

The City of South Shore opened 100 units of public housing in Fall, 1973 and plans to add 60 more units. The construction of a new city park is in progress. The baseball diamond and horse arena are completed, tennis courts, picnic areas, camping grounds and a playground are being added. There are plans to build a YMCA. Several new businesses have opened, a branch of the Greenup County Library was opened, and a convalescent home with 30 intermediate care beds is under construction.

Worthington

The city purchased a new 1,000 gallon per minute pumper and is planning to purchase the city-maintained park. 100 units of FHA financed housing were developed and a 55-unit subdivision opened. A new post office was constructed.

Wurtland

The city purchased a new 1,500 gallon per minute pumper, will install in its cruiser a radio hookup to the Greenup County base station, and blacktopped two city streets. A private day care center was opened in October, 1974 and a 60-bed convalescent home will be in operation by early 1975.

Recreation, Entertainment and Livability

Greenbo Lake State Resort Park, near Greenup, is a 3,330-acre park with lodge, dining and camping facilities. The 225-acre Greenbo Lake provides boating, fishing and swimming opportunities. A dock,

bathhouse, and beach are located on the lake; fishing and paddle boats may be rented. In addition, the park has a lodge pool, horseback riding, hiking trails, playground and miniature golf course. Located in the park, the Buffalo Furnace, typical of many iron furnaces in the area, was in operation until 1875.

Two covered bridges, dating to 1855 and 1875 are located in Greenup County. Other nearby areas of historic interest include Central Park which contains several prehistoric mounds, the McGuffey School Museum, a replica of the Kentucky mountain log cabin school where William Holmes McGuffey taught while working on the readers and the Wee House in the Wood, the museum home of Jean Thomas, the famous 'Traipsin' Woman, all located in Ashland. In addition, Ashland is the home of the Greater Ashland Center for the Performing Arts which brings musical and theatrical programs to the region. Additional cultural programs as well as sports events are sponsored by colleges and groups in Ashland, Kentucky and Portsmouth, Ohio.

Greenup County residents can take advantage not only of the new Greenbo Lake Resort Park, boating and fishing opportunities on the Ohio and Big Sandy Rivers, and activities in the metropolitan areas of Ashland, Kentucky and Portsmouth, Ohio but also two other state parks within a 25-mile radius. Carter Caves State Resort Park, near Olive Hill, is well known for the caves, one of which is the home of the Social Bat, which is on the national list of vanishing species. Varieties of flowers and plants abound in this 1,000-acre park. Park accommodations include a lodge, cottages, dining room, gift shop, coffee shop and campsites near a grocery. Facilities for fishing, boating, hiking, horseback riding, golf, and swimming in the lodge pool or in 37-acre Smoky Valley Lake, contribute to making Carter Caves Park a popular tourist area. Grayson Lake State Park, near Grayson, features camping sites, a beach, fishing and a dock on 2,712-acre Grayson Lake.

THE LABOR MARKET

POPULATION TRENDS

Incorporated cities	Population			Percent Change		
	1973*	1970	1960	1950	1960-70	1950-60
Bellefonte	--	966	337	**	+186.6	--
Flatwoods	--	7,380	3,741	**	+ 97.3	--
Greenup	--	1,284	1,240	1,276	+ 3.5	- 2.8
Raceland	--	1,857	1,115	1,001	+ 66.5	+11.4
Russell	--	1,982	1,458	1,681	+ 33.9	-13.3
South Shore	--	676	658	**	+ 2.7	--
Worthington	--	1,364	1,235	695	+ 10.4	+77.7
Wurtland	--	1,060	**	**	--	--
Labor Market						
Area	119,800	117,773	115,333	110,915	+ 2.1	+ 4.0
Greenup County	33,800	33,192	29,238	24,887	+ 13.5	+17.5
Boyd County	53,000	52,376	52,163	49,949	+ 0.4	+ 4.4
Carter County	20,400	19,850	20,817	22,559	- 4.6	- 7.7
Lewis County	12,600	12,355	13,115	13,520	- 5.8	- 3.0

*Provisional estimates; not available for cities.

**Not incorporated at that time.

Sources: U. S. Department of Commerce, Bureau of the Census, Census of Population, 1970, 1960, 1950. U. S. Bureau of the Census, Current Population Reports, Series P-26, June 1973.

GENERAL EMPLOYMENT CHARACTERISTICS, 1973

Major Employment Group	Employment	
	Greenup County	Labor Market Area*
TOTAL	8,000	37,970
Agricultural	290	1,940
Nonagricultural	7,710	36,030
Manufacturing	3,823 (est.)	11,465 (est.)
Government	940	4,240
Trade and Services	1,245	9,176
Other	1,702	11,149

*Includes Kentucky Counties of Greenup, Boyd, Carter, and Lewis.

Source: Kentucky Department for Human Resources, Bureau for Administration and Operations.

MANUFACTURING EMPLOYMENT TRENDS BY INDUSTRY
SEPTEMBER 1973 AND 1963

Industry	Greenup County			Labor Market Area**		
	1973	1963	% Change	1973	1963	% Change
TOTAL	3,853	315	+1,123.2	11,673	7,982	+ 46.2
Food & Kindred Products	0	5	- 100.0	225	317	- 29.0
Apparel, Textiles, Leather	0	0	0	1,344	890	+ 51.0
Lumber, Furniture	7	2	+ 250.0	267	191	+ 39.8
Printing & Publishing, Paper	12	4	+ 200.0	250	191	+ 30.9
Chemicals, Petroleum & Coal, Rubber	214	110	+ 94.5	2,071	823***	+151.6
Stone, Clay & Glass	358	194	+ 84.5	803	859	- 6.5
Primary Metals	3,261*	0	--	6,013	4,560	+ 31.9
Machinery, Metal Products, Equipment	1	0	--	699	149	+369.1
Other	0	0	0	1	2	- 50.0

*Includes employment for Armco Steel Corporation. Armco's entire employment was reported in Boyd County prior to March, 1973. At that time, employment was allocated between Boyd and Greenup Counties to reflect actual employment conditions arising from the location of the plant on the county line.

**Includes Kentucky counties of Greenup, Boyd, Carter and Lewis.

***Excludes employees that were not reported prior to 1971.

GREENUP COUNTY MANUFACTURING FIRMS,
THEIR PRODUCTS AND EMPLOYMENT

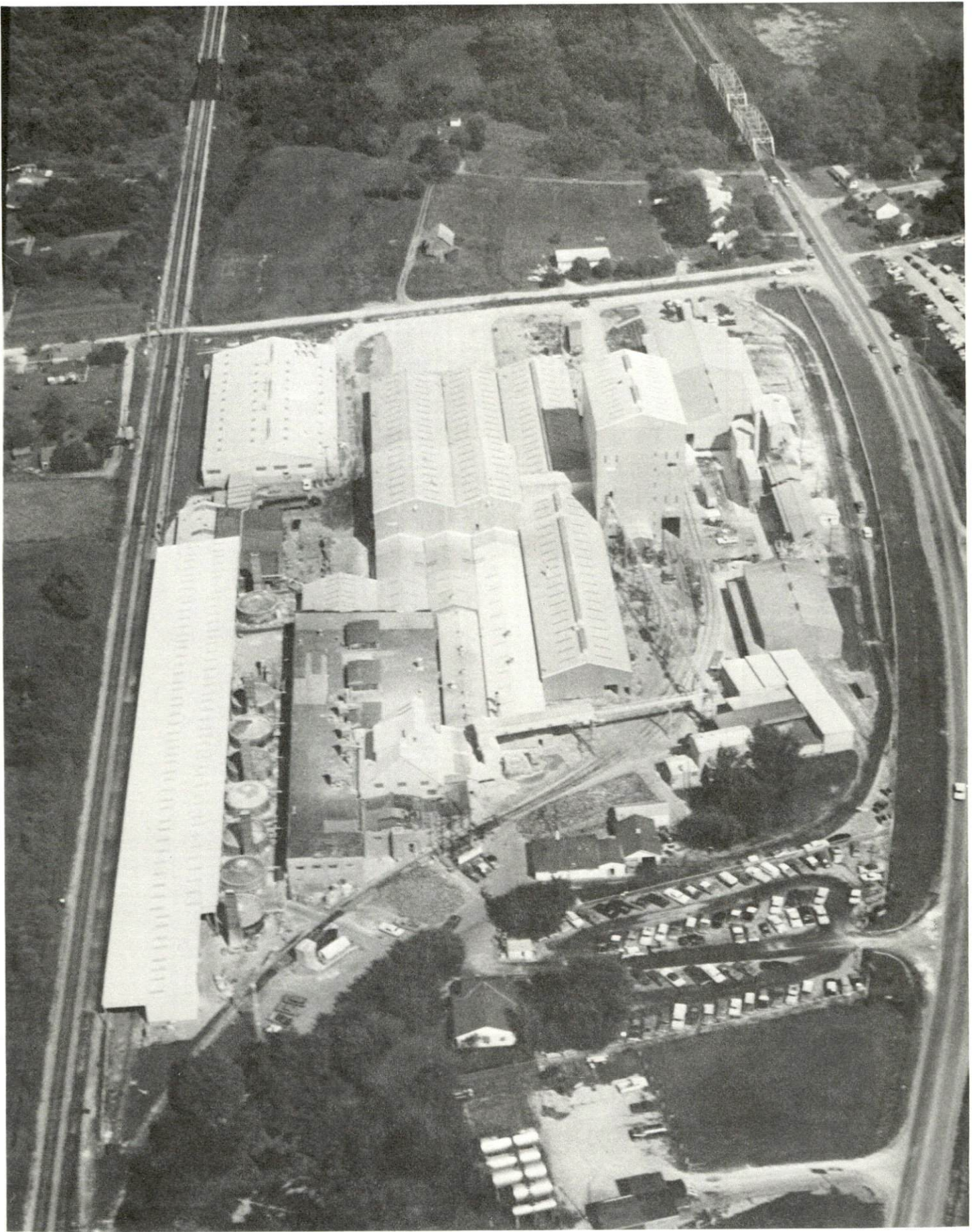
Firm (Establishment date)	Product	Employment			
		Total	Male	Female	Organized
<u>Greenup*</u>					
Greenup News (1938)	Newspaper	5	2	3	
Greenup Sentinel (1973)	Newspaper	4	1	3	
Industrial Supply House (1968)	Refractory products, internal chills for ferrous castings, special binders for sand molding	10	9	1	
Edgiel Shepherd and Sons Lumber (1959)	House, barn forming crossties, lumber	3	3	0	
National Mine Service Co. (1974)	Mining machine	Not yet in operation, expected employment of 200			

<u>Firm (Establishment date)</u>	<u>Product</u>	<u>Employment</u>			<u>Organized</u>
		<u>Total</u>	<u>Male</u>	<u>Female</u>	
<u>Russell</u>					
Falcon Industries (1973)	Detergents, shampoo	10	6	4	
W. B. Modern Dairy, Inc. (1935)	Milk	17	15	2	
Russell Publishing Co., Inc. (1908)	Job printing	8	5	3	
<u>South Shore</u>					
C. E. Refractories, Inc. (1958)	Fireclay plastic refractories	30	30	0	**
Columbia Hydrocarbon (1953)	Fractionation plant	24	22	2	**
Charles Taylor Sons Co. (1902)	Special refractories	220	219	1	**
<u>Wurtland</u>					
E. I. Dupont de Nemours & Co. (1926)	Sulfuric acid, water dispersed polymer micro- foam	170	164	6	

*Armco Steel Corporation has production facilities in Greenup County. Employment is not shown above because the address is listed as Ashland, Kentucky.

**See Labor Organizations page 17.

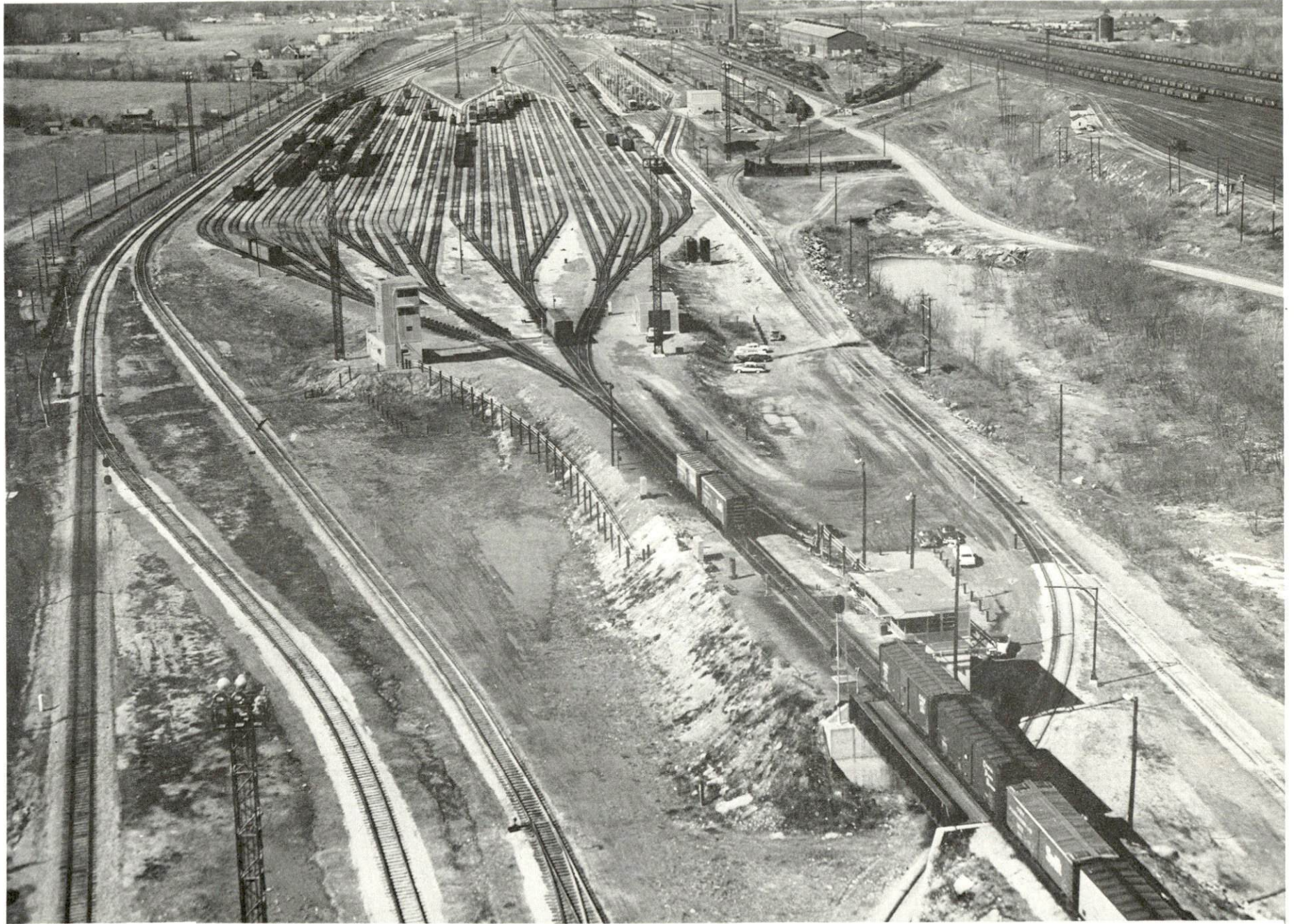
Source: Kentucky Department of Commerce, Division of Research and Planning.



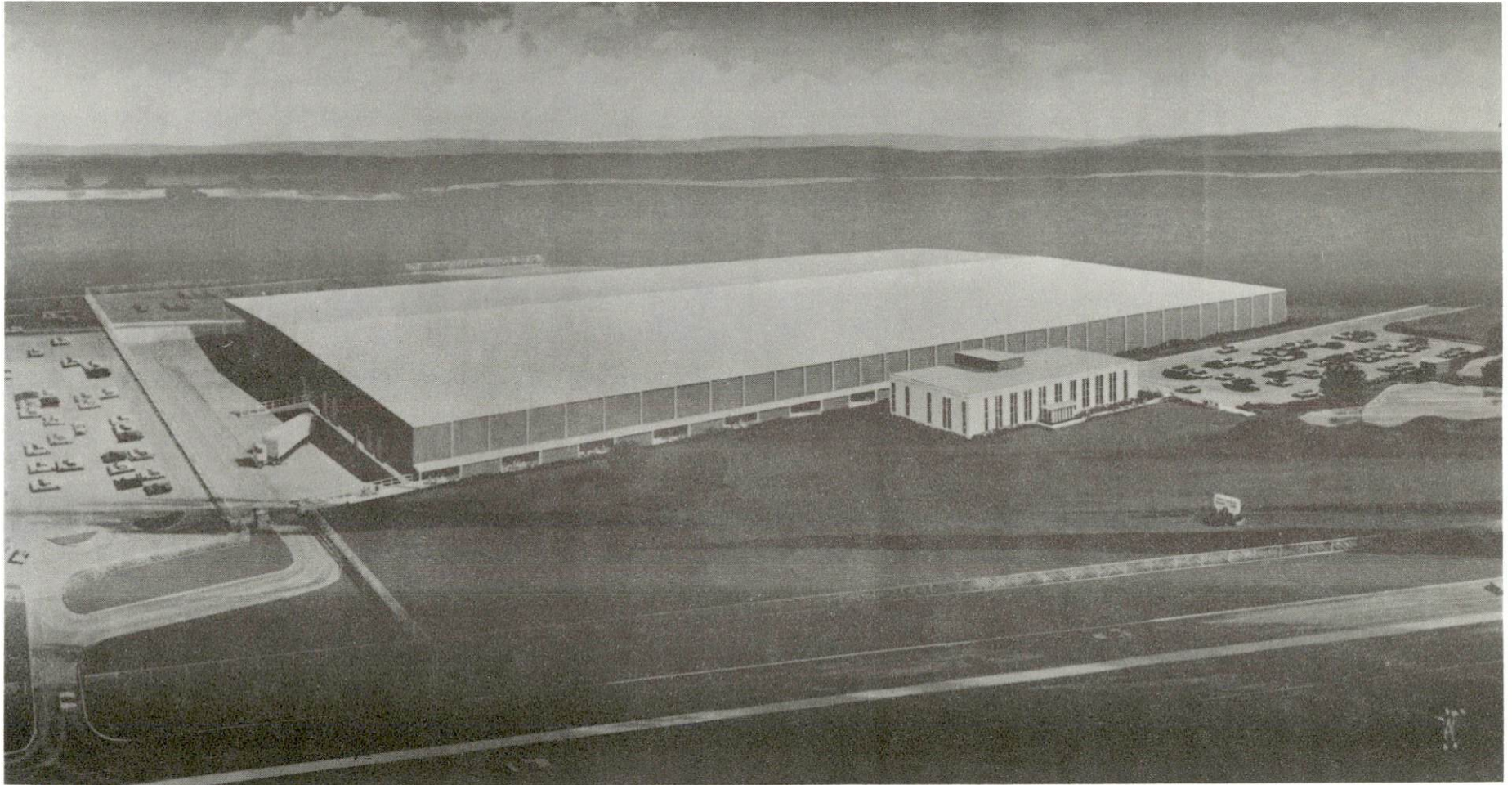
CHARLES TAYLOR SONS CO.
DIVISION OF NATIONAL LEAD CO.
South Shore



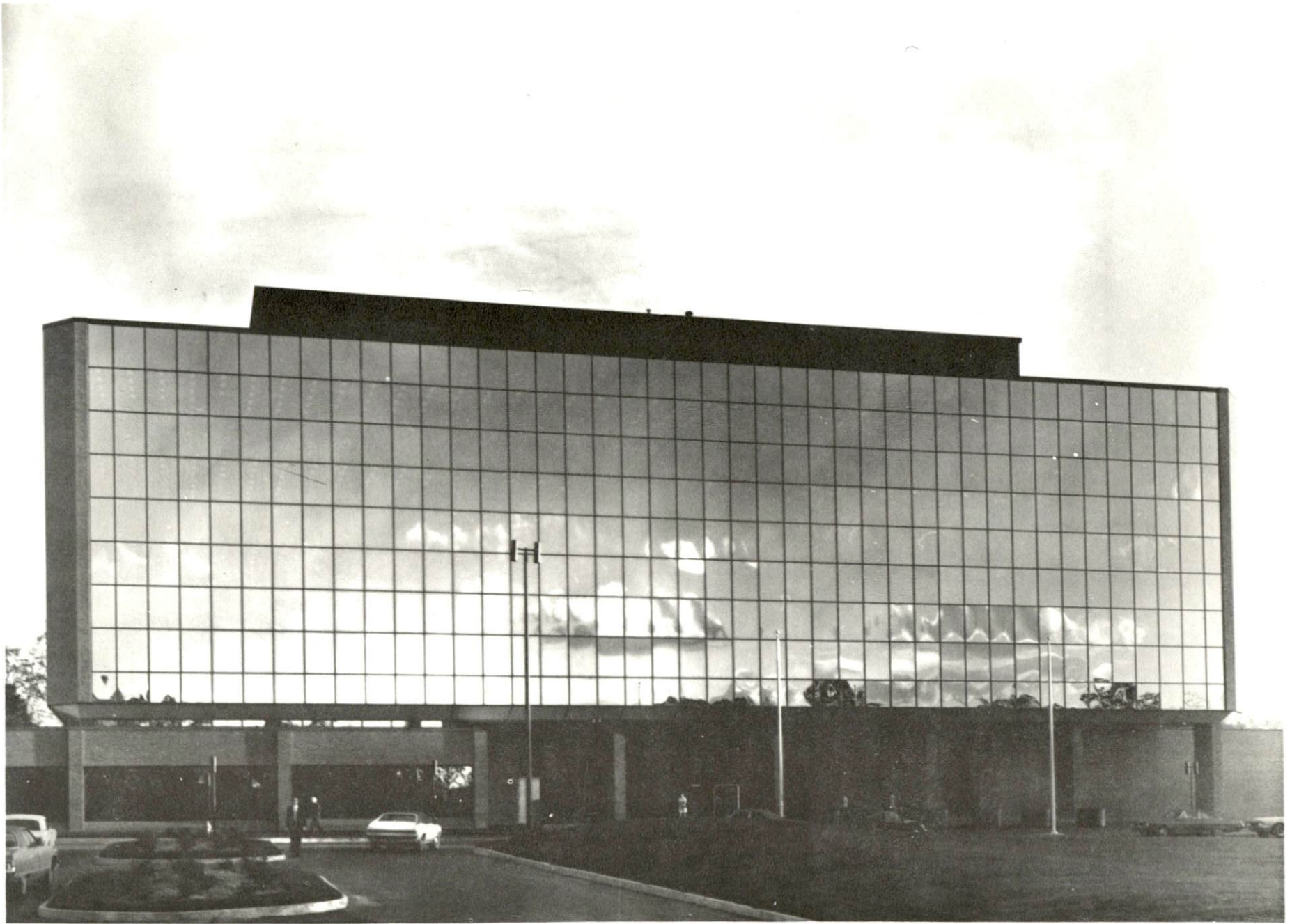
ARMCO STEEL CORPORATION
Ashland Division



FITZPATRICK YARD - Russell
RACELAND CAR YARDS



ARCHITECT'S RENDERING OF NATIONAL MINE SERVICE COMPANY
SCHEDULED FOR COMPLETION - 1975

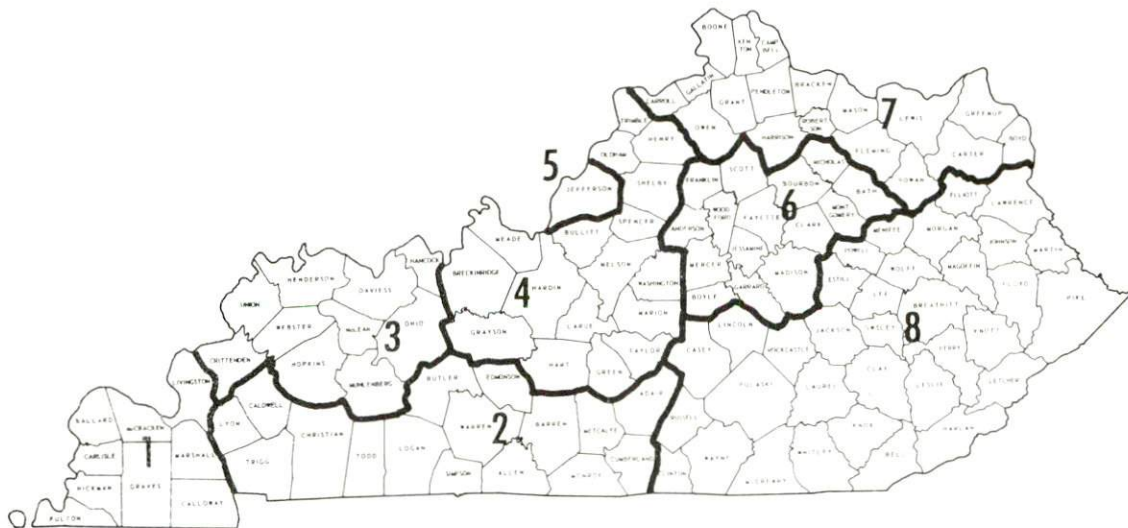


ASHLAND OIL'S NEW EXECUTIVE HEADQUARTERS

WAGES

Occupational wage rates for specific industries are usually not available to most government agencies, and wage data furnished to state employment agencies by industrial employers is protected from disclosure by federal law. The most reliable up-to-date wage information can be obtained by direct contact with local employers.

Associated Industries of Kentucky, a voluntary organization of Kentucky businesses, regularly collects occupational wage rates and fringe benefits data from participating member firms. Data is compiled for over 130 clearly defined office, production, and service occupations. Tabulations are published for eight regions of Kentucky, as shown on the map below. It should be noted that the data may be weighted by the preponderance of firms in the larger cities and may be somewhat higher than the rates paid in the smaller communities. Data from these tabulations are available, upon request, from the Kentucky Department of Commerce, Frankfort, Kentucky 40601.



Associated Industries of Kentucky Area Wage Surveys

LABOR ORGANIZATIONS

<u>Union</u>	<u>Representing manufacturing workers at:</u>
Oil, Chemical and Atomic Workers	Columbia Hydrocarbon
The United Stone and Allied Products Workers of America	Charles Taylor Sons Company C. E. Refractories, Inc.
United Steel Workers	Armco Steel Corporation in Boyd and Greenup Counties

ESTIMATED MALE LABOR SUPPLY GREENUP COUNTY LABOR MARKET AREA

<u>Area</u>	Current			Future	
	<u>Total</u>	<u>Not in Labor Force</u>	<u>Unemployed</u>	<u>Under- employed</u>	<u>Reaching 18 yrs. of age by 1980</u>
Labor Market Area	4,450	880	2,050	1,520	6,412
Greenup	900	0	480	420	1,925
Boyd	1,350	0	740	610	2,692
Carter	1,400	420	670	310	1,113
Lewis	800	460	160	180	682

Sources: Kentucky Department for Human Resources, Kentucky Labor Supply Estimates by County, 1973. Kentucky Department of Commerce, Future Labor Supply by 1980.

ESTIMATED FEMALE LABOR SUPPLY GREENUP COUNTY LABOR MARKET AREA

<u>Area</u>	Current			Future	
	<u>Total</u>	<u>Not in Labor Force</u>	<u>Unemployed</u>	<u>Under- employed</u>	<u>Reaching 18 yrs. of age by 1980</u>
Labor Market Area	8,520	5,950	800	1,770	6,177
Greenup	2,660	1,960	180	520	1,852
Boyd	3,490	2,320	400	770	2,658
Carter	1,660	1,240	160	260	987
Lewis	710	430	60	220	680

Sources: Kentucky Department for Human Resources, Kentucky Labor Supply Estimates by County, 1973. Kentucky Department of Commerce, Future Labor Supply by 1980.

PER CAPITA PERSONAL INCOME

<u>Area</u>	<u>1972</u>	<u>1962</u>	<u>% Change</u>
Greenup County	\$2,794*	\$1,111	+151.5
Labor Market Area			
Range**	\$1,968 - 4,009*	\$1,040 - 2,014	N.A.
Kentucky	3,634	1,769	+105.4
U. S.	4,549	2,381	+ 91.1

*Estimated from Huntington-Ashland, West Virginia-Kentucky-Ohio SMSA data.

**Includes Kentucky Counties of Greenup, Boyd, Carter and Lewis.

Sources: Office of Development Services and Business Research, College of Economics, University of Kentucky, Kentucky Personal Income 1929/68. U. S. Department of Commerce, Office of Business Economics, Survey of Current Business, May 1974, August 1974.

TRANSPOR TATION

Rail

Line serving Flatwoods, Greenup, Russell, Raceland, South Shore, Wurtland and Worthington - The Chessie System

Services - 21 eastbound and 21 westbound freights daily, switching facilities, siding space for 12,200 cars in Russell; refrigeration and heating services in Russell. Nearest piggyback facilities are located in Huntington, West Virginia. Passenger service is provided by Amtrack at Ashland.

For details on freight routing, schedules, rates, and services, contact:

General Manager, Freight Service
The Chessie System
603 B & O Central Building
2 N. Charles
Baltimore, Maryland 21201

Truck Service

Company

Home Office

Greenup County

Associated Transport, Inc.	380 Madison Avenue New York, New York 10017
Bell Lines, Inc.*	6414 McCorkel Avenue S.E. Charleston, West Virginia 25304
Commercial Motor Freight, Inc.*	3400 Refugee Road Columbus, Ohio 43227
Hogan Storage and Transfer Co.	721 E. Fourth Avenue Williamson, West Virginia 25661
W. J. Maler Storage Co.	P. O. Box 365 Huntington, West Virginia 25700
McLean Trucking Co.	P. O. Box 213 Winston-Salem, North Carolina 27107
Miami Transportation Co.	1220 Harrison Avenue Cincinnati, Ohio 45214
O. K. Trucking Co.	1810 South Street Cincinnati, Ohio 45204
Point Express, Inc.	P. O. Box 10185 - Station C Charleston, West Virginia 25312

(Cont'd.)

<u>Company</u>	<u>Home Office</u>
Reinhardt's Transfer Co.	1410 Tenth Street Portsmouth, Ohio 45662
Smith's Transfer Corporation	P. O. Box 1000 Staunton, Virginia 24401
Suburban Motor Freight, Inc.	1100 King Avenue Columbus, Ohio 43212

<u>Other Freight Services</u>	<u>Nearest Shipping Center</u>
United Parcel Service	Ashland, Kentucky, 14 miles away

HIGHWAY MILES AND TRUCK TRANSIT TIME IN DAYS FROM
GREENUP, KENTUCKY, TO SELECTED MARKET CENTERS

City	Delivery		City	Delivery	
	Highway Miles	Time TL		Highway Miles	Time TL
Atlanta, Ga.	501	2	Los Angeles, Calif.	2,322	7
Birmingham, Ala.	531	2	Louisville, Ky.	215	2
Chicago, Ill.	507	2	Nashville, Tenn.	344	2
Cincinnati, Ohio	159	1	New Orleans, La.	874	3
Cleveland, Ohio	325	2	New York, N. Y.	673	2
Detroit, Mich.	442	2	Pittsburgh, Pa.	294	2
Knoxville, Tenn.	304	2	St. Louis, Mo.	479	2

*Terminal-Ashland, 14 miles distant.

Source: Delivery time only - Point Express, Inc., P. O. Box 10185,
Station C, Charleston, West Virginia 25312.

Air

Nearest Commercial

Location: Tri-State Airport (Walker-Long Field)
Huntington, West Virginia, 23 miles east of Greenup

Runways: 1 paved

Length: 6,200 feet

Traffic Control: Tower

Lighting: Beacon, runway

Services: Piedmont and Allegheny Airlines, jet fuel,
(80, 87, 100 and 130), restaurant, storage,
car rental, limousine, taxi, flight instruction,
major repairs, charter service

Air Freight
Service: Accepted on space-available basis

Local

Location:	Ashland-Boyd County Airport Worthington, Kentucky	Scioto County Airport Portsmouth, Ohio, 12 miles northeast of South Shore
Runways:	1 paved	1 paved
Length:	5,600 feet	5,000 feet
Traffic		
Control:	Tetrahedron	Unicom
Lighting:	Sundown to sunrise, medium intensity runway lights	Medium intensity runway lights
Services:	Gas and oil (80 and 100), A & E service, charter, flight instruction, storage	Gas and oil (80, 100, jet), charter, flight instruction
Air Freight		
Service:	Chartered air freight service can be arranged	Chartered air freight service can be arranged

Air Express, a division of REA Express has an office in Portsmouth, Ohio.

Water

Since Greenup County is located on the Ohio River, river transportation is an important asset to the area. A nine-foot navigation channel is maintained along the Ohio River. Pittsburgh is approximately 330 river miles from Greenup and Cairo, Illinois, 650 river miles. Eleven privately operated river terminals are located on the Kentucky shores of the Greenup County area.

Bus - Service daily from Ashland, Kentucky, to Cincinnati, Ohio, through towns in Greenup County, by Trailways.

Taxi - 24-hour service within the county

Rental Services - Nearest rental service in Ashland, Kentucky and Ironton, and Portsmouth, Ohio

POWER AND FUEL

Electricity

Company serving Bellefonte, Flatwoods, Greenup, Kenwood, Raceland, Russell, South Shore, Worthington, Wurtland and parts of Greenup County along the Ohio River - Kentucky Power Company

Source of power - Kentucky Power Company

Total generating capacity - 1,080,000 KW

For industrial rates contact:

Kentucky Power Company
340 15th Street
Ashland, Kentucky 41101

Company serving portions of western Greenup County - Grayson RECC

Source of power - East Kentucky Power Cooperative

Total generating capacity - 548,000 KW

For industrial rates contact:

Grayson RECC
P. O. Box 576
Grayson, Kentucky 41143

Natural Gas

Company serving Bellefonte, Firebrick, Flatwoods, Greenup, Kenwood, Lloyd, Raceland, Russell, South Portsmouth, South Shore, Worthington, and Wurtland - Columbia Gas of Kentucky, Inc.*

Source of supply - Columbia Gas Transmission Company

Size of transmission mains - 10 and 12 inches (supplier); 10 and 12 inches (distributor)

Distribution mains - 4 and 6 inches

Distribution pressure - 10-150 psi

Btu content - 1,020 per cubic foot; Specific gravity - .65

For rates and supplies contact:

Industrial Sales Manager
Columbia Gas of Kentucky, Inc.
166 Walnut Street
Lexington, Kentucky 40501

*Approximately 20 miles of distribution and transmission lines in Greenup County were relocated along new U.S. Highway 23.

Other Fuels

Propane and Butane

Ashland Oil and Refining Company
1409 Winchester Avenue
Ashland, Kentucky

Williams Energy Company
23rd Street
Ashland, Kentucky

Stan Harvey Gas Company
1065 2nd Street
Ironton, Ohio - also South Shore, Kentucky

Doxol Gas of Portsmouth
203 Market Street
Portsmouth, Ohio

Fuel Oils

Distillate fuel oil - In Ashland, Kentucky: Ashland Oil, Ashland Drive;
John Clark Gulf Oil Distributors, 101 Wheatley Road; Standard Oil,
215 53rd Street

In South Shore, Kentucky: Standard Oil, U. S. Route 23

In Greenup, Kentucky: Little Sandy Gas and Oil, Walnut Street

Residual fuel oil - Arrangements must be made with the refinery

Low sulphur content coal - Available locally in eastern Kentucky

WATER AND SEWERAGE

Water

Company serving Russell, Kenwood, and Bellfonte - Russell Water Works

Source - 6 wells

Treatment plant capacity - 1,000,000 gallons per day

Average daily consumption - 650,000 gallons

Peak daily consumption - 750,000 gallons

Type treatment - chlorination, filtration, coagulation

Storage capacity - 1,700,000 gallons

Size lines - 12, 8, 6, and 4 inches

Average pressure - 75 psi

Average temperature - 16 degrees centigrade

MONTHLY WATER RATES FOR WHOLESALE AND INDUSTRIAL CONSUMERS

First	3,000 gallons	\$1.70 per M gallons
Next	3,000 gallons	.80 per M gallons
Next	69,000 gallons	.60 per M gallons
Next	150,000 gallons	.55 per M gallons
Next	225,000 gallons	.48 per M gallons
Next	300,000 gallons	.46 per M gallons
Next	750,000 gallons	.45 per M gallons
Bulk		.40 per M gallons

Tap-on charge - Approximately \$100

Company serving Flatwoods and West Russell - Flatwoods Water Works

Source - Purchases water from Russell Water Works

Average daily consumption - 500,000 gallons

Peak daily consumption - 675,000 gallons

Storage capacity - 550,000 gallons

Size lines - 4, 6, and 8 inches

Average pressure - Approximately 60 psi

Average temperature - 16 degrees centigrade

(Cont'd.)

MONTHLY WATER FEES

First	2,000 gallons	\$ 3.80
	5,000 gallons	5.67
	10,000 gallons	8.42
	15,000 gallons	11.17
	20,000 gallons	13.92
	25,000 gallons	16.67
	30,000 gallons	19.42
	35,000 gallons	22.17
	40,000 gallons	24.92
	45,000 gallons	27.67
	50,000 gallons	30.42
	59,000 gallons	35.37

Company serving Raceland and West Russell and a section of Flatwoods - Raceland Water Works*

Source - 2 wells

Treatment plant capacity - No treatment plant

Average daily consumption - 150,000 gallons

Type treatment - Chlorination

Storage capacity - 100,000 gallons

Size lines - 6 and 8 inches

Average pressure - 80 psi

MONTHLY WATER RATES FOR WHOLESALE
AND INDUSTRIAL CONSUMERS

Raceland

First	2,000 gallons	\$2.89 per M gallons
Next	1,000 gallons	.99 per M gallons
Next	20,000 gallons	.63 per M gallons
Next	150,000 gallons	.54 per M gallons
Over	173,000 gallons	.45 per M gallons

West Russell

First	2,000 gallons	\$2.16 per M gallons
Next	1,000 gallons	.99 per M gallons
Next	20,000 gallons	.63 per M gallons
Next	150,000 gallons	.54 per M gallons
Over	173,000 gallons	.45 per M gallons

*The Raceland Water Works is in the process of installing a master meter; recently extended water lines to a new subdivision and built a new storage tank.

Company serving Worthington - Worthington Water and Sewer Works*
 Source - 2 wells
 Treatment plant capacity - 244,800 gallons per day
 Average daily consumption - 130,000 gallons
 Peak daily consumption - 150,000 gallons
 Type treatment - Potassium permanganate, chlorination, filtration
 Storage capacity - 200,000 gallons
 Size lines - 4, 6 and 8 inches
 Average pressure - 60 psi
 Average temperature - 20 degrees centigrade

MONTHLY WATER FEES

First	2,000 gallons	\$ 5.00
	5,000 gallons	8.00
	10,000 gallons	11.95
	15,000 gallons	14.90
	20,000 gallons	17.65
All over	21,000 gallons	.45 per M gallons

Tap-on charge - \$150

Company serving Greenup - Greenup Water and Sewer Commission**
 Source - 3 wells
 Treatment plant capacity - 230,400 gallons per day
 Average daily consumption - At capacity
 Type treatment - Chlorination
 Storage capacity - 150,000 gallons
 Size lines - 1, 2, 4 and 6 inches
 Average pressure - 100 - 120 psi

MONTHLY WATER RATES FOR WHOLESALE
AND INDUSTRIAL CONSUMERS

First	1,000 gallons	\$3.50 (Minimum)
Next	2,000 gallons	1.30 per M gallons
Next	4,000 gallons	1.00 per M gallons
Next	4,000 gallons	.70 per M gallons
Over	11,000 gallons	.50 per M gallons

*The \$350,000 municipal water works was completed in 1971.

**An estimated \$2 million is being spent on water improvements. A 400,000 gallon standpipe is being built and the capacity of the new treatment plant will be 2 million gallons per day. In addition service will be extended along Routes 1 and 23.

Company serving South Shore - South Shore Water Works Company*
 Source - 3 wells
 Treatment plant capacity - 750,000 gallons per day
 Average daily consumption - 300,000 gallons
 Peak daily consumption - 500,000 gallons
 Type treatment - Chlorination
 Storage capacity - 114,000 gallons
 Size lines - 4, 6 and 8 inches
 Average pressure - 70 psi
 Average temperature - 58 degrees F.

MONTHLY WATER RATES FOR WHOLESALE
 AND INDUSTRIAL CONSUMERS

First	1,000 gallons	\$2.50 (Minimum)
Next	9,000 gallons	1.28 per M gallons
Next	20,000 gallons	.75 per M gallons
Next	20,000 gallons	.50 per M gallons
Next	50,000 gallons	.35 per M gallons

There is an extension fee of \$100 to \$400 for service outside the city limits.

Name of water district - Wurtland Water District
 Area served - Wurtland**
 Date when water district began operating - 1965
 Source of raw water - 2 wells
 Capacity of treatment plant - 144,000 gallons per day
 Type of treatment - Chlorination, potash, soda ash
 Average amount of water used in a 24-hour period - 45,000 gallons
 Storage capacity - 179,000 gallons
 Average pressure - 70 psi
 Average temperature - 45 degrees F.
 Size lines - 6 and 8 inches
 Rates -

First	2,000 gallons	\$4.25 (Minimum)
Next	2,000 gallons	1.75 per M gallons
Next	6,000 gallons	1.50 per M gallons
Next	10,000 gallons	1.25 per M gallons

Tap-on charge - \$100

*Approximately one mile of new 6-inch lines replaced old lines and service extended 7 miles out Route 7 and to East Tygert. The construction of an elevated tank with storage capacity of 150,000 gallons is in progress.

**The city of Wurtland is planning to purchase the Wurtland Water District. Also there are plans to extend an 8-inch line to serve The National Mine Service Company.

Surface water sources - Ohio River
 Average discharge - Unlimited
 Expected ground water yield - 500 to 1,000 gpm along the Ohio River; 50 to 200 gpm in a small portion of eastern Greenup County; 5 to 50 gpm over remainder of county

Sewerage

Company serving Flatwoods, West Russell and the commercial portion of Russell - Flatwoods Sewage Treatment Plant*

Design population - 7,960

Average daily flow - At capacity :

Treatment - Primary

Type treatment - Clarifier, drying beds, sludge pump, primary digester

Treated effluent discharged into - Ohio River

Size of sanitary mains - 8, 12 and 15 inches

Rates - 85 percent of the monthly water bill

Tap-on \$35; \$10 permit for no tap-on

Company serving Raceland - Raceland Water Works*

Design capacity - 200,000 gallons per day

Average daily flow - At capacity

Treatment - Primary

Type treatment - Chlorination, drying beds

Treated effluent discharged into - Ohio River

Size of sanitary mains - 8 and 10 inches

Size of storm mains - 12 inches

Rates -

First	3,000 gallons	\$3.10 per M gallons
Next	1,000 gallons	1.30 per M gallons
Next	20,000 gallons	.82 per M gallons
Next	150,000 gallons	.70 per M gallons
Next	173,000 gallons	.58 per M gallons

*Flatwoods, Russell and Raceland plan to put in a new combined system with secondary treatment. It will be large enough to handle Wurtland and Werthington. The grant for the sewer study has been approved. The city of Raceland completed its \$505,607 sewerage project in 1974. A new pumping station was built and 28,000 feet of 8-inch sewer mains were installed.

Company serving Bellefonte and Kenwood - Sanitation District #1
 Design capacity - 750,000 gallons per day
 Average daily flow - Not in operation until April, 1975
 Treatment - Primary and secondary
 Type treatment - Aeration, clarifier, drying beds, settling basins
 Treated effluent discharged into - Ohio River
 Size of sanitary mains - 8 inches and larger
 Rates - Average homes \$10.50 monthly, tap-on \$175

For industrial rates contact: Sanitation District #1
 309 Cardinal Road
 Russell, Kentucky 41169

Company serving Worthington - Worthington Water and Sewer Works*
 Design capacity - 200,000 gallons per day
 Average daily flow - 150,000 gallons
 Treatment - Secondary
 Type treatment - Aeration, clarifier
 Treated effluent discharged into - Ohio River
 Size of sanitary mains - 6, 8, 10 and 12 inches
 Size of storm mains - 12 inches
 Rates -

First	2,000 gallons	\$2.85
Next	1,000 gallons	.46 per M gallons
Next	17,000 gallons	.28 per M gallons
All over	20,000 gallons	.20 per M gallons

Tap-on fee - \$15

Company serving Wurtland - Wurtland Water Works**
 Design capacity - 100,000 gallons per day
 Average daily flow - Not available
 Treatment - Primary and secondary
 Type treatment - Aeration, chlorination
 Treated effluent discharged into - Uhland's Branch
 Size of sanitary mains - 8, 10 and 12 inches
 Rates - 100 percent of monthly water bill; tap-on fee \$100

*The Worthington Water and Sewer Works extended service to two new subdivisions.

**The City of Wurtland plans to purchase the Water District and will re-name it The Wurtland Water and Sewer Company.

Company serving Greenup - Greenup Water and Sewer Commission*
 Design capacity - 300,000 gallons per day
 Average daily flow - 150,000 gallons
 Treatment - Primary and secondary
 Type treatment - Aeration, clarifier
 Treated effluent discharged into - Little Sandy River
 Size of sanitary mains - 6, 8 and 10 inches
 Size of storm mains - 6, 8, 10, and 12 inches
 Rates - 50 percent of current monthly water bill; tap-on fee \$100

Company serving South Shore - South Shore Municipal Treatment Plant**
 Design capacity - 210,000 gallons per day
 Average daily flow - 100,000 gallons
 Treatment - Primary
 Type treatment - Extended aeration, clarifier, chlorination
 Treated effluent discharged into - Ohio River
 Size of sanitary mains - 6, 8, and 10 inches
 Size of storm mains - 16, 20 and 32 inches
 Rates -

0 to 1,500 gallons	\$2.40 (Minimum)
1,500 to 10,500 gallons	1.00 per M gallons
10,500 to 30,000 gallons	.50 per M gallons
30,000 gallons and over	.25 per M gallons

*Greenup is planning to add 1 1/2 miles of new sewer lines.

**South Shore put in a new lift station, bought a new chlorinator and put in approximately one mile of new lines due to dislocation of old lines by highway construction.

LOCAL GOVERNMENT

City

Bellefonte

Structure - Chairman, Board of Trustees - 2-year term; 4 trustees -
2-year terms

Budget 1973 - General Fund \$ 14,100

Flatwoods

Structure - Mayor - 4-year term; 12 councilmen - 2-year terms

Budget 1973 - General Fund \$111,914.04

 Water and Sewer Fund 496,388.82

Fees and licenses - Occupational taxes \$25 - \$200; unloading
license \$25

Greenup

Structure - Mayor - 4-year term; 6 councilmen - 2-year terms

Budget 1973 - General Fund \$ 86,011.50

 Water and Sewer Fund 54,897.71

Fees and licenses - Franchise and unloading licenses - \$25 annually;
soft drink and amusement machines - \$10 annually

Raceland

Structure - Mayor - 4-year term; 6 councilmen - 2-year terms

Budget 1974 General Fund \$ 50,000

 Water and Sewer Fund 154,000

Fees and licenses - Soft drink and amusement machines - \$5 annually;
auto sticker fee

Russell

Structure - Mayor - 4-year term; 6 councilmen - 2-year terms

Budget 1973-74 - General Fund \$153,457.11

 Water and Sewer Fund 225,191.87

Fees and licenses - Amusement machine license - \$25 - \$100 annually;
unloading licenses for vehicles selling directly to the customer \$25 -
\$35 annually; soft drink license - \$10 annually

South Shore

Structure - Chairman, Board of Trustees - 2-year term; 4 trustees -
2-year terms

Budget 1973-74 - General Fund	\$59,851.14
Sewer Fund	37,770.22
(March '73-Feb. '74)	

Fees and licenses - Business and occupational licenses \$5 - \$170
annually; mobile home tax stickers - \$10 annually; automobile tax
sticker - \$5

Worthington

Structure - Mayor - 4-year term; 6 councilmen - 2-year terms

Budget 1973-74 - General Fund	\$45,727.77
Water and Sewer Fund	74,697.89

Fees and licenses - None

Wurtland

Structure - Mayor - 2-year term; 5 councilmen - 2-year terms

Budget 1973 - General Fund	\$ 1,100.00
Water and Sewer Fund	51,381.50

Fees and licenses - None

County

Structure - County Judge - 4-year term; 3 magistrates - 4-year term

Budget 1974-75 - General Fund	\$261,202.00
Road Fund	134,298.00

Assessed Value of Property, 1974-75

Classes of Property

Greenup County

Real Estate	\$185,448,416
Tangibles	35,627,428
Public Service (1973)	49,446,727

Property Taxes

Land and buildings are taxed by the state and may be taxed by local
jurisdictions. The state rate is \$0.015 per \$100 of assessed valuation.

Tangible personal property owned by manufacturers (automobiles,
trucks, finished goods, office furniture, office equipment) is taxed
by the state at \$0.15 per \$100 and may be taxed by local jurisdictions.

Manufacturing machinery, raw materials inventories, and goods in process inventories are not subject to local taxation. The state rate is \$0.15 per \$100.

Property stored in public warehouses is not subject to local taxation. The state rate is only \$0.015 per \$100.

All property is assessed at 100 percent of fair cash value.

Local Property Tax Rate Per \$100 of Assessed Valuation, 1974*

<u>Taxing Jurisdiction</u>	<u>Bellefonte</u>	<u>Flatwoods</u>	<u>Greenup</u>	<u>Raceland</u>	<u>Russell</u>
County	\$.174	\$.174	\$.174	\$.174	\$.174
School	.633	.633	.626	.873	.731
City	.130	.250	.275	.160	.275

<u>Taxing Jurisdiction</u>	<u>South Shore</u>	<u>Worthington</u>	<u>Wurtland</u>	<u>Greenup County</u>
County	\$.174	\$.174	\$.174	\$.174
School	.633	.633	.633	.633
City	.185	.170	.150	
Fire Protection	.030		.100	

Planning and Zoning

City agencies - Worthington Planning Commission, Flatwoods Planning Commission, Bellefonte Planning Commission

Joint agency - Greenup County Joint Planning Commission includes Greenup, Raceland, Russell and South Shore

Zoning enforced - Russell, Worthington, Flatwoods, Raceland, Bellefonte
 Subdivision regulations enforced (in city only) Russell, Raceland, Worthington, Flatwoods, Bellefonte

Local codes enforced - Russell, Flatwoods, Worthington, Raceland

Mandatory state codes enforced - Plumbing, National Fire Protection Association Code, National Building Code (for major buildings and residential construction containing more than 12 bedrooms per building)

Other programs - Public housing, South Shore; plans for public housing, Russell

*Kentucky Department of Revenue, Program and Research Staff.

Safety

Police

	<u>Bellefonte</u>	<u>Flatwood</u>	<u>Greenup</u>
Total staff	1 full time 1 part time	9 regular 4 extras	2 full time 3 part time
Radio-patrol cars	2	2	1
Other equipment		Base radio station serving Flatwoods, Worthington, Race- land, Russell and Bellefonte, police dispatchers point to point system	

	<u>Raceland</u>	<u>Russell</u>	<u>South Shore</u>
Total staff	4 full time 4 part time	1 full time 6 part time	2 full time 3 part time
Radio-patrol cars	1	3	2
Other equipment			Base radio station, radar, breath- lizer

	<u>Worthington</u>	<u>Wurtland</u>	<u>Greenup County</u>
Total staff	2 full time 3 part time	1 full time 1 part time	6 full time 4 part time
Radio-patrol cars	1		4

Fire

	<u>Flatwoods</u>	<u>Greenup</u>	<u>Raceland</u>	<u>Russell</u>
American Insurance Association Fire Rating	8	8	7	7 & 9*
Volunteers	30	18	30	25
Equipment:				
750 gpm pumpers	1			1
500 gpm pumpers	2	1	1	1
Ladder truck	3 (2 with 500 gallon tank and 1 with 350 gallon)			

(Cont'd.)

*Also serves Bellefonte on contract basis.

	<u>Flatwoods</u>	<u>Greenup</u>	<u>Raceland</u>	<u>Russell</u>
Rescue truck			1	2
1,500 gallon tanker		1		
Portable pumps		2		
Resusitators	1	2	1	1
Generators	2	1	1	

	<u>South Shore</u>	<u>Worthington</u>	<u>Wurtland</u>
American Insurance Association Fire Rating	8 & 9	7	8 & 9
Volunteers	22	24	35
Equipment:			
1,500 gpm pumper	1		
1,200 gpm pumper	1		
1,000 gpm pumpers	1	1	1
750 gpm pumpers	1	1	
500 gallon portable pump	1		
Other	2,000 gallon tanker; 500 gallon tanker; 150 gallon tank for brush fires		1,000 gallon tanker resusitator

Sanitation

	<u>Bellefonte</u>	<u>Flatwoods</u>	<u>Greenup</u>	<u>Raceland</u>
Type service	Private	Municipal	Private	Private*
Fee charged:				
residential (monthly)	\$2.00	\$2.25	\$1.00**	\$2.00
business	Does not apply	Contract	Contract	Contract
Collection frequency:				
residential	Weekly	Weekly	Weekly	Weekly
business	Does not apply	Contract	Contract	Contract
Trash pickup	None	Weekly for residences and as needed for businesses	Weekly	
Disposal method	Landfill	Landfill	Landfill	Landfill

*Raceland is planning to have municipal service; service to heads of households who are 62 years of age and over will be at no charge.

**Greenup charges a \$2 fee three times a year for the landfill.

	<u>Russell</u>	<u>South Shore</u>	<u>Worthington</u>	<u>Wurtland</u>
Type service	Private	Private	Private	Private
Fee charged:				
residential (monthly)	\$1.75	\$2.50	\$1.75	\$2.50
business	By contract up to \$250	\$5.00 aver- age monthly	\$1.75 monthly	By con- tract
Collection frequency:				
residential	Weekly	Weekly	Weekly	Weekly
business	As needed	Weekly	Weekly	Twice weekly
Trash pickup	On call	Monthly	On call	None
Disposal method	Landfill	Landfill	Landfill	Landfill

EDUCATION

Public Schools

	<u>Raceland</u>	<u>Russell</u>	<u>Greenup County</u>
Total Enrollment			
(Fall 1974)	918	3,197	4,443
Elementary	485	1,534	2,809
Junior High		598	645
High School	433	1,065	989
Student-Teacher Ratio	21-1	25-1	23-1
Elementary	24-1	26-1	22-1
Junior High		26-1	22-1
High School	19-1	24-1	25-1
Accreditation		Southern Association of Colleges and Schools	
Percent High School Graduates to College	25.5	48.5	23.8
Expenditures Per Pupil (1972-73)	\$563.16	\$525.05	\$492.95
Bonded Indebtedness, June 30, 1973	\$443,000	\$1,946,000	\$4,371,000

Vocational Schools

Nearest State School

Location	Ashland State Vocational-Technical School	
	Ashland, 14 miles from Greenup	
Curriculum	Clerical	Carpentry
	Secretarial	Cosmetology
	Health Careers	Drafting
	Practical Nursing	Electricity
	Child Care	Machine Shop
	Food Service	Radio and TV Repair
	Electronics (technology)	Tailoring
	Auto Body Repair	Welding
	Auto Mechanics	

Nearest Area Education Center

Greenup County Area Vocational Education
Center
Location South Shore
Curriculum Horticulture
Accounting Junior Management
Clerical
Secretarial
Auto Mechanics
Carpentry
Drafting
Electricity

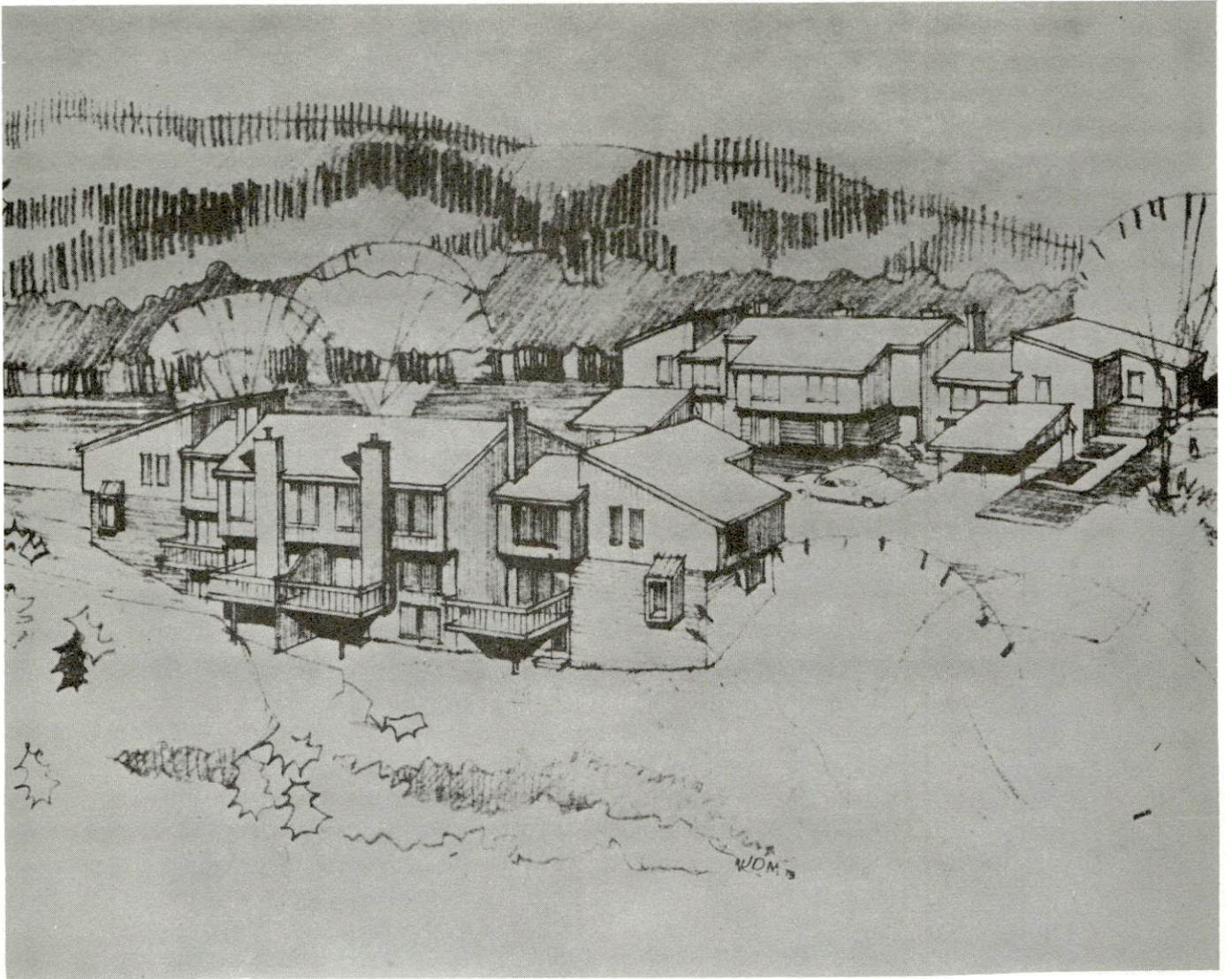
Arrangements can be made to provide training in the specific production skills required by an industrial plant. Instruction may be conducted either in the vocational school or in the industrial plant, depending upon the desired arrangement and the availability of special equipment.

Colleges and Universities

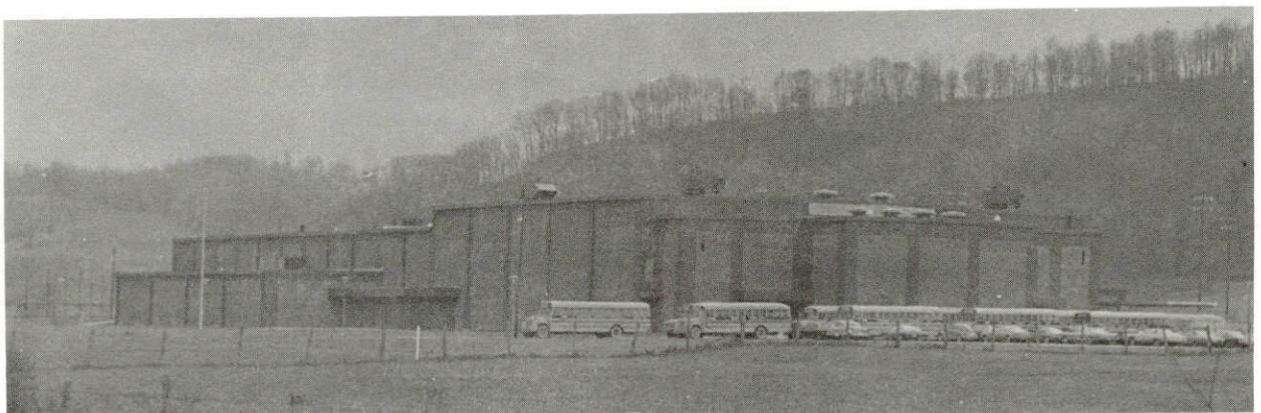
<u>Name</u>	<u>Area - Within 50 miles</u>		<u>Highest Degree Conferred</u>
	<u>Location</u>	<u>Enrollment (Fall, 1973)</u>	
Ashland Community College	Ashland	1,169	Associate
Marshall University	Huntington, West Virginia	9,772	Academic and Professional
Morehead State University	Morehead	6,578	Masters, Ph.D.*
Ohio State University Ironton Campus	Ironton, Ohio	297	**
Portsmouth Campus	Portsmouth, Ohio	695	A. A. , A. S.

*Cooperative program with the University of Kentucky, Lexington, for a Ph.D. in education only.

**Degree conferred from Ohio University at Athens.



CONDOMINIUM COMPLEX IN GREENUP COUNTY



GREENUP COUNTY HIGH SCHOOL

HEALTH

Hospitals

<u>General Hospitals</u>	<u>Location</u>	<u>Beds</u>
Our Lady of Bellefonte Hospital	Bellefonte	126
King's Daughters' Hospital	Ashland	345

Our Lady of Bellefonte Hospital

General hospital facilities - X-ray, surgery, outpatient laboratory and X-ray, emergency, EKG, pharmacy, laboratory, recovery rooms, pediatrics, physical therapy

Medical staff - 15 doctors on the active staff, 25 doctors on the courtesy staff, 30 registered nurses, and 16 licensed practical nurses

King's Daughters' Hospital

General hospital facilities - Emergency room, 7 operating rooms, recovery room, dental surgery room, X-ray, laboratory, OB section, pediatrics, intensive care unit, cardiac care unit, 17 bed psychiatric unit

Medical staff - 54 doctors on active staff, 14 doctors on courtesy staff, 14 dentists, 2 pathologists, 117 registered nurses (full time), 15 registered nurses (part time), 50 licensed practical nurses, 13 nurses' assistants, 6 emergency medical technicians, 6 technicians

Other - The Kentucky District Number 4 State Tuberculosis Hospital is located in Ashland. The South Shore area is served by four hospitals in Portsmouth, Ohio.

Nursing Homes

	<u>Number</u>	<u>Beds</u>
Intermediate care homes	1	30
Personal care homes	1	83

Public Health

Facility - Greenup County Health Department

Staff - 1 receptionist, 4 clerks (2 part time), 4 registered nurses, 2 sanitarians and 1 health officer (as consultant only)

Budget 1974-75 - \$95,493.89

OTHER LOCAL FACILITIES

Communications

Telephone - General Telephone Company of Kentucky
Services - Direct dialing and standard services

Telegraph - Western Union Telegraph
Services - Company has office in Ashland

Postal - U. S. Post Offices are located in Argillite, Flatwoods, Greenup, Raceland (branch), Russell, South Portsmouth, South Shore, Worthington, Wurtland, and York

Newspapers - The Greenup News, Greenup
Weekly and circulation - 4,500
 The Times Trader, Russell
Weekly and circulation - 3,800
 The Greenup Sentinel, Greenup
Weekly and circulation - 10,600

Other papers received from - Ashland, Louisville and Lexington, Kentucky; Huntington, West Virginia and Cincinnati, Ohio

Radio -
Stations received from - Ashland and Grayson, Kentucky; Ironton and Portsmouth, Ohio; Huntington, West Virginia

Television -
Cable service
Reception from - Huntington and Charleston, West Virginia; Lexington, Kentucky; Cincinnati, Ohio

Kentucky Educational Television - Ashland Transmitter, Channel 25

Library Services

Public library - Greenup County Library, Greenup (headquarters)
Size collection - 42,000 volumes
Circulation, 1973-74 - 250,000
Services - Bookmobile, reference material, meeting room, periodicals; films, paintings, records, recorder, tapes, interlibrary loans, story hour for children, and special services to special education classes, residents of the nursing home and the home for emotionally disturbed boys

Branch libraries are located in Flatwoods and South Shore.

Religious Institutions

Number of churches - Approximately 100
Denominations - Baptist, Christian, Church of Christ, Church of God,
Church of God of Prophecy, Jehovah's Witnesses, Methodist,
Nazarene, Pentecostal, Pilgrim Holiness, Presbyterian, Roman
Catholic, Seventh Day Adventist

Nearest Synagogues - Ashland, Kentucky
Portsmouth, Ohio

Congregations - Agudath Achim (reform)
Bere Abraham (reform)

Financial Institutions

<u>Banks</u>	<u>Statement as of September 30, 1974</u>	
	<u>Assets</u>	<u>Deposits</u>
First and Peoples Bank	\$33,332,540.98	\$29,680,785.84

<u>Savings and Loan Associations</u>	<u>Statement as of June 30, 1974</u>	
	<u>Assets</u>	<u>Shared Accounts</u>
Home Federal Savings and Loan Association	\$26,031,392.70	\$22,647,460.66
Russell Federal Savings and Loan Association	10,885,822.51	9,786,561.42

Hotels and Motels

Total number - 3 Units - 174

Clubs and Organizations

Business and Civic - Jaycees, Kiwanis, Lions, Optimists, Rotary,
Greenup County Peace Officers Association, PTA, Fish and Game
Association

Fraternal - American Legion, Masonic Lodge

Women's - Eastern Star, Homemakers, Garden Clubs, War Mothers,
American Legion Auxiliary for Women, Woman's Clubs, Firemen's
Auxiliary

Youth - Boy Scouts, Girl Scouts, Brownies, Cub Scouts, 4-H Club,
Little League, Babe Ruth League, Pony League, YMCA, FHA, FFA,
FTA, Boy's Club, Campfire Girls, Greenup Big Brother Program

RECREATION

Local

Greenup County Area

Public Recreation Facilities

Supervised program - All communities except Bellefonte have summer programs

Parks - 6

Playgrounds - 17 (includes school facilities)

Swimming pool - planned

Tennis court - 1

Baseball diamonds - 10 (includes school facilities)

Football fields - 5 (includes school facilities)

Boat docks - 3

Boat ramps - 2

Basketball courts - 2

Youth center - 1

Private Recreation Facilities

Country club with swimming pool, golf course and tennis courts - 1

Swimming clubs - 2

Drive-in theater - 1

Boat docks - 2

YMCA - 1

Tourist Attractions and Events

Greenbo Lake Resort Park, near Greenup

Historic Bennetts Mill Covered Bridge and Old Town Covered Bridge, Greenup County

American Indian Festival, Greenup County Fair and Old Fashioned Day in Greenup



GREENBO LAKE STATE RESORT PARK

Area

Cultural Events (Within 25 miles)

Appalachian Arts Festival held annually at the Ashland Community College; concerts, Children's Theater productions, opera, gospel sings, rock concerts, and other cultural programs at the Greater Ashland Center for the Performing Arts; mountain lore and folk music at the Wee House in the Wood, the museum home of Jean Thomas, the Traipsin' Woman of the Appalachians; Kentucky Folk Song Festival and the Fraley Family Festival at Carter Caves State Resort Park

Park and Historic Sites (Within 25 miles)

Carter Caves State Resort Park, near Olive Hill
Grayson Lake State Park, near Grayson
McGuffey School Museum, Ashland

AGRICULTURE - NATURAL RESOURCES - CLIMATE

Agriculture*

	<u>Greenup County Labor Market Area</u>	
Total land area (acres)	224,320	891,712
Percent of area in farm land	51.8	56.0
Number of farms	945	3,825
Average size of farms (acres)	123.0	130.6
1969 value of all farm products	\$2,696,982	\$14,820,263
Value per farm	2,853	3,875
Total crop sales	1,414,640	8,899,671
Total livestock & livestock products	1,259,617	8,267,264
1972 agricultural production included:		
Burley tobacco (lbs.) (est.)	2,038,000	10,537,000
Corn for grain (bu.)	204,000**	815,900**
Cattle and calves (number)	9,400**	50,300**
Hogs and pigs (number)	1,400**	5,400**
Milk production, 1971 (lbs.)	4,560,000	55,660,000

Natural Resources

Principal mineral resources	Limestone, fire clay, petroleum
Other mineral resources	Coal, sand and gravel
Acres of commercial forest land	154,900
Most abundant tree species	Red oak, white oak, hickory, yellow pine, yellow poplar, beech, hard maple, soft maple

*U. S. Department of Commerce, Bureau of the Census, Census of Agriculture, 1969. U. S. Department of Agriculture and Kentucky Department of Agriculture, Kentucky Agricultural Statistics, 1972.

**Preliminary figures.

Climate*

Greenup County

Temperature

Annual mean (30-year record)	54.6 degrees
Average annual 1973	55.7 degrees
Record highest, August, 1918 (85-year record)	106.0 degrees
Record lowest, February, 1899 (85-year record)	- 27.0 degrees
Normal heating degree days (30-year record)	4,817
(Heating degree day totals are the sums of negative departures of average daily tempera- tures from 65 degrees F.)	

Precipitation

Mean annual total (30-year record)	38.44 inches
Mean annual snow and sleet (85-year record)	24.00 inches
Total precipitation 1973	38.89 inches
Mean number days precipitation (.01 inch or more) (85-year record)	142
Average number days thunderstorms (76-year record)	44

*U. S. Department of Commerce, Environmental Science Services
Administration, Climatological Data, 1973. Station of record:
Parkersburg, West Virginia.

HISTORY

Greenup County is located in the northeastern part of Kentucky on the Ohio River and is adjacent to the City of Portsmouth, Ohio. It covers an area of 350 square miles. Little Sandy River and Tygart Creek flow across it and empty into the Ohio River. The land surface ranges from rich river bottoms to rolling and hilly areas, as it lies near the foothills of the Appalachian Mountains. About two-thirds of the area is forested.

Settlers first came to the Greenup County area in the mid-eighteenth century. South Portsmouth, formerly called Springfield, was settled at a site once occupied by Shawnee Indians and early French traders before any Englishmen came to Kentucky.

This was the first settlement in Kentucky. The first white child born west of the Alleghenies lived in Greenup County. She remembered George Washington's visit to the area when he was surveying in 1773. Jesse Boone, one of Daniel Boone's brothers, settled near the town of Greenup where his brother often visited him. Daniel carved the famous "D. Boone killed a bar" on a tree in this vicinity. By 1800 a mill, tannery, and store were operated at Old Town by John Womacks.

Greenup became Kentucky's forty-fifth county in 1803, its territory taken from Mason County. It was named for Christopher Greenup, who was a United States Congressman at the end of the eighteenth century and later became Kentucky's third Governor. Greenup, the county seat, is located on the Ohio and was incorporated in 1818 as Greenupsburg.

In 1810 Greenup County had 2,369 inhabitants. This grew steadily to 24,887 in 1950; 29,238 in 1960; and 33,192 in 1970. Flatwoods is the largest city, with a population of 7,380 in 1970. The towns of Greenup, Raceland, Russell and Worthington all have populations of over 1,000.

Agriculture accounted for 290 of the county's 8,000 employed in 1973. Manufacturing employment grew to 3,820 in 1973. Portions of the Armco Steel Corporation's steel works are in Greenup County.

Tourist and recreational facilities are provided for the county at Greenbo Lake State Park.

The most prominent of Greenup County's sons is Jesse Stuart, Kentucky's famous poet and author. His works on life in eastern Kentucky include The Thread That Runs so True, Man With a Bull-Tongue Plow, and Taps for Private Tussie.