

1972

Industrial Resources: Harrison County - Cynthiana

Kentucky Library Research Collection
Western Kentucky University, spcol@wku.edu

Follow this and additional works at: https://digitalcommons.wku.edu/harrison_cty

 Part of the [Business Administration, Management, and Operations Commons](#), [Growth and Development Commons](#), and the [Infrastructure Commons](#)

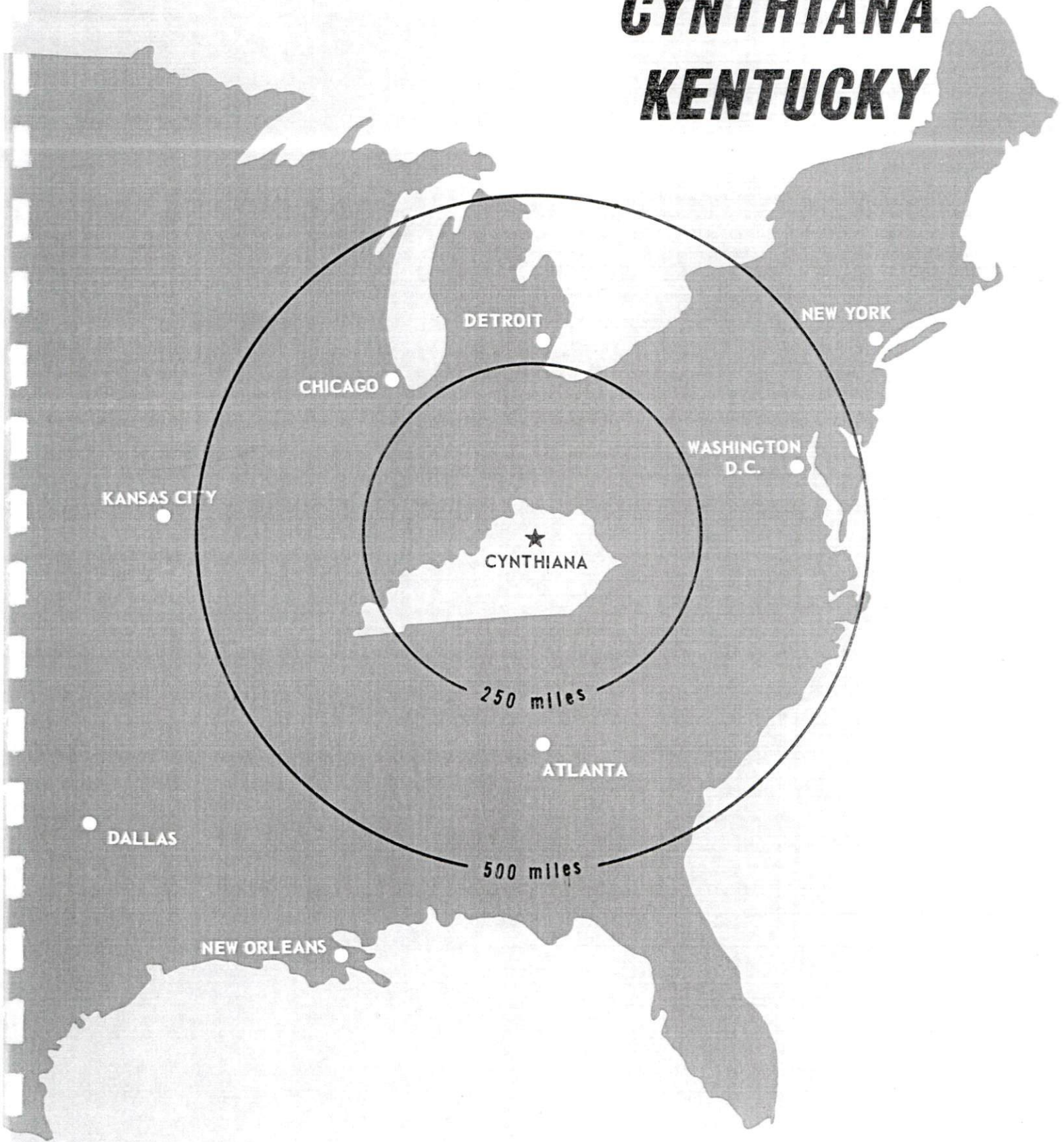
Recommended Citation

Kentucky Library Research Collection, "Industrial Resources: Harrison County - Cynthiana" (1972). *Harrison County*. Paper 13.
https://digitalcommons.wku.edu/harrison_cty/13

This Report is brought to you for free and open access by TopSCHOLAR®. It has been accepted for inclusion in Harrison County by an authorized administrator of TopSCHOLAR®. For more information, please contact topscholar@wku.edu.

INDUSTRIAL RESOURCES

CYNTHIANA KENTUCKY



CURRENT INDUSTRIAL RESOURCES

CURRENT INDUSTRIAL RESOURCES, CYNTHIANA, KENTUCKY

This is a 1973 supplement to "Industrial Resources, Cynthiana, Kentucky" which was published in 1972.

Population

	<u>1970</u>	<u>1960</u>
Cynthiana	6,356	5,641
Harrison County	14,158	13,704
Labor Market Area	86,428	83,257
(Includes Harrison, Bourbon, Bracken, Grant, Nicholas, Pendleton, Robertson, and Scott Counties.)		

General Employment Characteristics

<u>Industry</u>	<u>Employment 1971</u>	
	<u>Harrison County</u>	<u>Labor Market Area</u>
TOTAL	5,300	27,960
Agricultural	1,250	7,370
Nonagricultural	4,050	20,590
Manufacturing	1,630	5,844
Government	520	3,830
Trade and Services	1,189	5,280
Other	711	5,636

Manufacturing Employment

<u>Type Industry</u>	<u>Harrison County</u>			<u>Labor Market Area</u>		
	<u>Sept. 1972</u>	<u>Sept. 1962</u>	<u>% Change</u>	<u>Sept. 1972</u>	<u>Sept. 1962</u>	<u>% Change</u>
TOTAL	1,531	949	+ 61.3	6,054	4,111	+ 47.3
Food & Kindred Products	145	140	+ 3.6	290	196	+ 47.9
Tobacco	1	3	- 66.7	4	42	+ 90.5
Apparel, Textiles, Leather	193	175	+ 10.3	1,809	831	+117.7
Lumber, Furniture	6	1	+500.0	25	96	+ 73.9
Printing & Publishing, Paper	32	19	+ 68.4	91	65	+ 40.0
Chemicals, Petroleum & Coal, Rubber	13	27	- 51.9	544	347	+ 56.8
Stone, Clay & Glass	6	4	+ 50.0	25	30	+ 16.7
Primary Metals	349	0	--	514	99	+419.2
Machinery & Metal Products, Equipment	567	580	+ 2.2	2,095	2,068	+ 1.3
Other	219	0	--	657	337	+ 94.9

There are presently 25 manufacturing firms in Harrison County. Major firms, employment, and year started operations:

<u>Firms</u>	<u>Employment</u>	<u>Year started operations</u>
Best Industries, Inc.	44	1970
Best Tool & Die Co., Inc.	31	1964
Blake & Johnson Co.	92	1957
Blue Grass Industries	195	1968
Bundy Corporation	227	1965
Cellu-Products	60	1971
Cleveland Twist Drill Co.	50	
Cudahy Co.	28	1969
Cynthiana Mfg. Co.	50	1972
Eaton Corporation	70	1970
Ladish Co. Ky. Div.	415	1961
Minnesota Mining & Mfg. Co.	172	1969
S. P. Owen Tobacco Co.	129	1927
Production Plating	32	1965
Joseph E. Seagram & Sons, Inc.	71	1934
Webber Farms, Inc.	110	1947

Labor Supply

	<u>Harrison County</u>			<u>Labor Market Area</u>		
	<u>Total</u>	<u>Male</u>	<u>Female</u>	<u>Total</u>	<u>Male</u>	<u>Female</u>
Current (1972)	1,778	827	951	11,718	5,261	6,457
Potential additions next five years	1,388	701	687	8,401	4,372	4,029

Personal Income

Harrison County, 1970: Per Capita - \$2,882*
1960: Per Capita - \$1,681

*Unadjusted for commuting.

Power and Fuel

<u>Electric Distributors</u>	<u>Source of Supply</u>
Kentucky Utilities Company*	Kentucky Utilities Company
Harrison County RECC	East Kentucky Power Cooperative

*Planned expansion for 1973 - Build a new substation, change voltage from 4KV to 7 KV, in eastern part of Cynthiana, at a cost of \$120,000.

Natural Gas DistributorSpecific GravityBtu per cu. ft.

Cynthiana

Columbia Gas of Kentucky, Inc.

.60

1,020

Water and Sewerage

Water: Daily treatment capacity - 3,000,000 gallons; average daily use - 1,350,000 gallons; peak daily use - 2,100,000 gallons; storage capacity - 1,200,000 gallons; size distribution lines - 6, 10, and 12 inches

WATER RATES

First 2,000 Gallons (or part thereof)	\$2.50
Quantity	Per 1,000 Gals.
Next 6,000 Gallons	.90
Next 12,000 Gallons	.60
Next 30,000 Gallons	.45
Next 50,000 Gallons	.35
Next 900,000 Gallons	.25
All over 1,000,000 Gallons	.18

There is an additional charge of 33 1/3% of the above schedule of rates charged to consumers for water which is delivered outside the corporate limits of the city.

Water District:

Water: Name - Harrison County Water Association, Inc.; purchases treated water from City of Cynthiana Water Department; size distribution lines - 6 inches

Rates:	First 2,000 gallons	\$6.00 (minimum)
	Next 1,000 gallons	1.25 per M gallons
	Next 2,000 gallons	1.00 per M gallons
	Next 45,000	.80 per M gallons
	Over 50,000 gallons	.60 per M gallons

Sewerage: Type treatment - primary and secondary; design capacity - 900,000 gallons per day

Rates: 50% of current monthly water bill

Local Government

Cynthiana

Business Fees and Licenses: Occupational license - 1 1/2 percent of gross wages and net profits, minimum license fee \$1.00, maximum license fee \$300

Property Tax Rates

Property tax rates per \$100 of assessed valuation, 1972.

	<u>Cynthiana</u>	<u>Harrison County</u>
State	\$.015	\$.015
County	.182	.182
School	.589	.589
City	.250	
Total	\$1.036	\$.786

Industrial Sites

The six sites shown on the 1972 Cynthiana industrial site map remain available for industrial use.

CYNTHIANA INDUSTRIAL SITES

1972

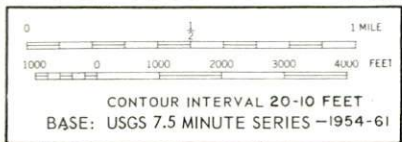
CYNTHIANA INDUSTRIAL SITES

1972

For more information about the following sites, contact Joe Craig Smith, President of Harrison County Industrial Foundation, Cynthiana, Kentucky; or the Kentucky Department of Commerce, Frankfort, Kentucky.

- SITE #1: ACREAGE: 140 acres
 LOCATION: Across South Fork of Licking River, approximately one-half mile from southern city limits
 ZONING: Agricultural
 HIGHWAY ACCESS: Kentucky 982 is approximately 1,200 feet west of site across railroad tracks with access road onto site.
 RAILROADS: Louisville & Nashville Railroad along entire western boundary of site
 WATER: City of Cynthiana Water Department
 SIZE LINE: 10-inch line one-half mile across river from site
 GAS: Columbia Gas of Kentucky
 SIZE MAIN: 6-inch main 2,000 feet west of site
 ELECTRICITY: Kentucky Utilities Company or Harrison County RECC
 SEWERAGE: Municipal sewerage service
 SIZE LINE: 8-inch line approximately one-half mile across river from site
 OWNERSHIP: Harrison County Fiscal Court
- SITE #2: ACREAGE: 24 acres
 LOCATION: South Cynthiana
 ZONING: Commercial
 HIGHWAY ACCESS: Site fronts on Kentucky 982.
 RAILROADS: Louisville & Nashville Railroad on entire western boundary
 WATER: City of Cynthiana Water Department
 SIZE LINE: 10-inch line on site
 GAS: Columbia Gas of Kentucky
 SIZE MAIN: 6-inch main at southeast corner of site
 ELECTRICITY: Harrison County RECC or Kentucky Utilities Company
 SEWERAGE: Municipal sewerage service
 SIZE LINE: 8-inch line along west boundary of site
 OWNERSHIP: Harrison County RECC
- SITE #3: ACREAGE: 15 acres
 LOCATION: Within the northeast city limits of Cynthiana
 ZONING: Commercial
 HIGHWAY ACCESS: Site fronts on U. S. 62.
 RAILROADS: Not rail served
 WATER: City of Cynthiana Water Department
 SIZE LINE: 8-inch line approximately 200 feet from site across U. S. 62
 GAS: Columbia Gas of Kentucky
 SIZE MAIN: 4-inch main approximately 200 feet from site across U. S. 62
 ELECTRICITY: Kentucky Utilities or Harrison County RECC
 SEWERAGE: Municipal sewerage service
 SIZE LINE: 8-inch line approximately 200 feet from site across U. S. 62
 OWNERSHIP: Private
- SITE #4: ACREAGE: 121 acres
 LOCATION: Site lies approximately 1,200 feet west of city limits.
 ZONING: Agricultural
 HIGHWAY ACCESS: Site fronts on Kentucky 356.
 RAILROADS: Not rail served
 WATER: City of Cynthiana Water Department
 SIZE LINE: 8-inch line across Kentucky 356 within approximately 600 feet of southeast corner of site
 GAS: Columbia Gas of Kentucky
 SIZE MAIN: 4-inch main on site
 ELECTRICITY: Harrison County RECC
 SEWERAGE: Municipal sewerage service
 SIZE LINE: 6-inch line 700 feet from southeast corner of site
 OWNERSHIP: Private
- SITE #7: ACREAGE: 70 acres
 LOCATION: Just outside south city limits
 ZONING: Agricultural
 HIGHWAY ACCESS: Access from Kentucky 982
 RAILROADS: Louisville & Nashville Railroad approximately 200 feet from southwest corner of site
 WATER: City of Cynthiana Water Department
 SIZE LINE: 10-inch line approximately 200 feet from southwest boundary of site.
 GAS: Columbia Gas of Kentucky
 SIZE MAIN: 10-inch main approximately 100 feet from site
 ELECTRICITY: Kentucky Utilities Company or Harrison County RECC
 SEWERAGE: Municipal sewerage service
 SIZE LINE: 8-inch line approximately 200 feet from southwest boundary of site
 OWNERSHIP: Private
- SITE #8: ACREAGE: Total 75+ acres: Tract I, 20 acres; Tract II, 25 acres; Tract III, 30 to 40 acres
 LOCATION: Just across South Fork of Licking River from southern city limits
 ZONING: Agricultural
 HIGHWAY ACCESS: Fronts on Kentucky 982
 RAILROADS: Louisville & Nashville Railroad along eastern boundary of Tract #1
 WATER: City of Cynthiana Water Department
 NEAREST LINE: 10-inch line at south city limits
 GAS: Columbia Gas of Kentucky
 SIZE MAIN: 6-inch main approximately 200 feet west of Tract #2
 ELECTRICITY: Kentucky Utilities Company
 SEWERAGE: Municipal sewerage service
 NEAREST LINE: 8-inch line at south city limits
 OWNERSHIP: Private

- A - EATON CORP.
- B - MINNESOTA MINING & MFG. CO.
- C - LADISH CO. - KY. DIV.
- D - S. P. OWEN TOBACCO CO.
- E - CELLU PRODUCTS
- F - CUDAHY CO.
- G - BLAKE & JOHNSON CO.
- H - CYNTHIANA MFG. CO.
- I - BUNDY TUBING - DIV. OF BUNDY CORP.
- J - BEST TOOL & DIE CO.



INDUSTRIAL RESOURCES
CYNTHIANA, KENTUCKY

Prepared by

The Kentucky Department of Commerce

in cooperation with

The Cynthiana-Harrison County Chamber of Commerce

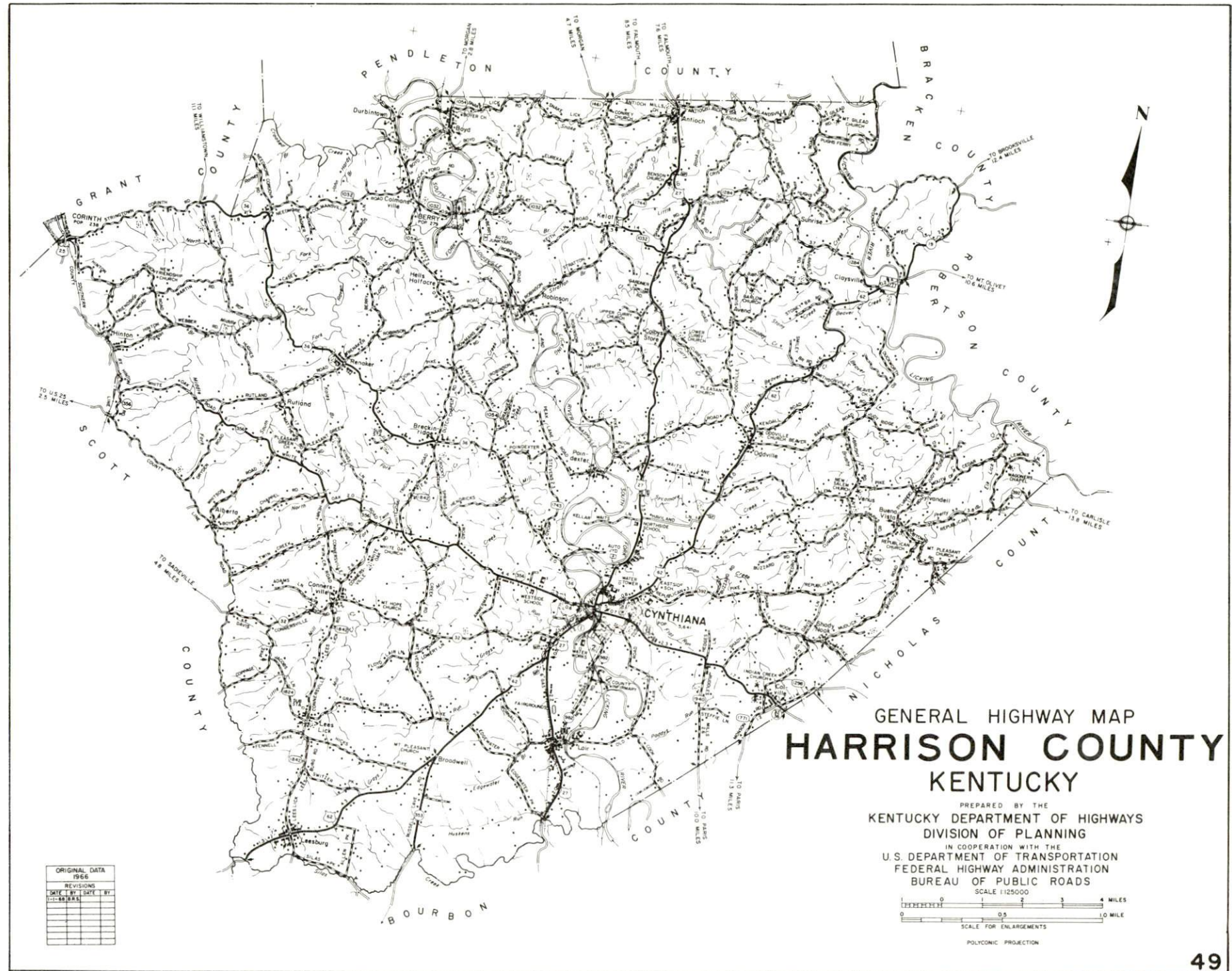
1972

This copy has been prepared by the Kentucky Department of Commerce, Division of Research and Planning, and the cost of printing paid from state funds.

TABLE OF CONTENTS

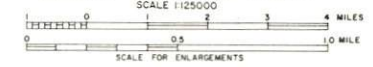
<u>Chapter</u>	<u>Page</u>
INDUSTRIAL SITES	i
CYNTHIANA, KENTUCKY - A RESOURCE PROFILE	1
THE LABOR MARKET	4
Population Trends	4
General Employment Characteristics, 1970	4
Manufacturing Employment Trends by Industry.	4
Major Cynthiana Manufacturing Firms, Their Products and Employment.	5
Wage Rates for Selected Occupations	6
Labor Organizations	6
Current and Future Labor Supply	7
Total Personal Income	7
Per Capita Personal Income	7
EDUCATION	8
Public Schools	8
Parochial School	8
Vocational Schools	11
Colleges and Universities	11
TRANSPORTATION	12
Rail.	12
Truck Service	12
Air	13
Bus	13
Taxi.	13
Rental Services.	13
POWER AND FUEL	14
Electricity	14
Natural Gas	14
Other Fuels	14
WATER AND SEWERAGE	15
Water	15
Sewerage	16

<u>Chapter</u>	<u>Page</u>
LOCAL GOVERNMENT.	17
City	17
County	17
Assessed Value of Property, 1971	17
Local General Property Tax Rates Per \$100 of Assessed Valuation, 1971	17
Planning and Zoning	17
Safety	18
Police.	18
Fire.	18
Rescue Service.	18
Civil Defense	18
Sanitation	19
HEALTH	20
Hospitals.	20
Nursing Homes	20
Public Health.	20
OTHER LOCAL FACILITIES	21
Communications	21
Library Services	21
Religious Institutions	22
Financial Institutions	22
Hotels and Motels.	22
Clubs and Organizations	22
RECREATION.	23
Local	23
Area	23
AGRICULTURE - NATURAL RESOURCES - CLIMATE.	25
Agriculture.	25
Natural Resources.	25
Climate	25
HISTORY	26



GENERAL HIGHWAY MAP
HARRISON COUNTY
 KENTUCKY

PREPARED BY THE
 KENTUCKY DEPARTMENT OF HIGHWAYS
 DIVISION OF PLANNING
 IN COOPERATION WITH THE
 U.S. DEPARTMENT OF TRANSPORTATION
 FEDERAL HIGHWAY ADMINISTRATION
 BUREAU OF PUBLIC ROADS

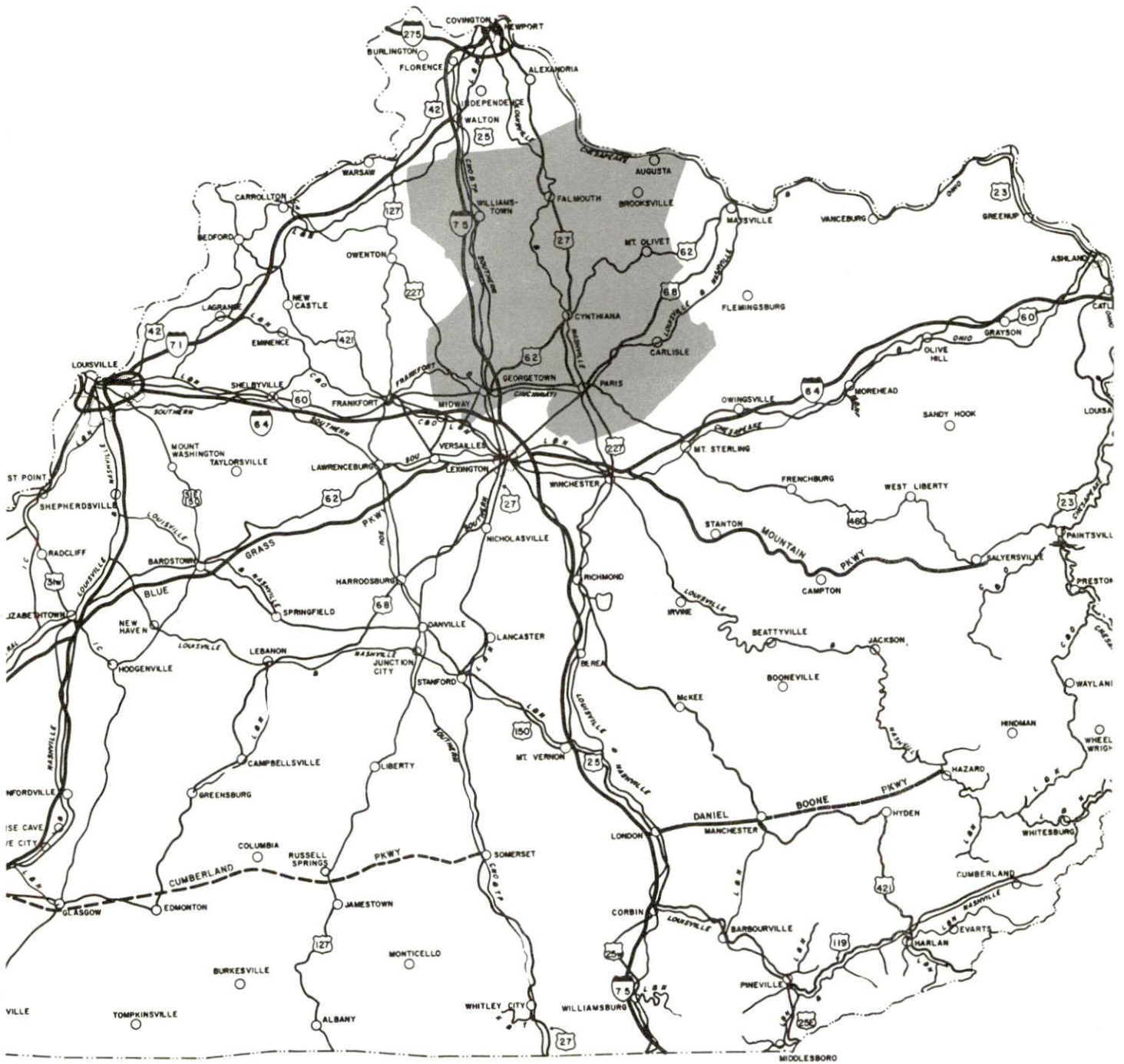


POLYCONIC PROJECTION

ORIGINAL DATA	
1956	
REVISIONS	
DATE	BY

CYNTHIANA LABOR MARKET AREA

Shaded area denotes labor market area



CYNTHIANA, KENTUCKY - A RESOURCE PROFILE

Location

Cynthiana, the county seat of Harrison County, is located in the northeast corner of central Kentucky's Bluegrass Region. It is 54 miles southeast of Cincinnati, Ohio, 79 miles northeast of Louisville, Kentucky, and 30 miles northeast of Lexington, Kentucky. In 1970, Cynthiana's population was 6,356 while Harrison County had a 1970 population of 14,158.

The Economic Framework

Total employment in Harrison County averaged 5,400 in 1970 with manufacturing providing 1,500 of these jobs, agriculture 1,300, government 500, and trade and services 1,180. Since 1961, manufacturing employment has increased by 553 jobs or 67.6 percent. Manufacturing employment is greatest in the machinery and metal products, primary metals, food and kindred products, and apparel industries.

Per capita personal income in the county in 1970 was \$3,320 as compared to \$1,574 in 1959. The change represents a 110.9 percent increase.

Cynthiana is the hub of a labor market area that includes Harrison County and the seven surrounding counties. Total area employment in 1970 averaged 28,200 with agriculture providing 7,500 jobs, trade and services 4,776, and government 3,700. In 1971, manufacturing accounted for 5,550 jobs. Diversified manufacturing growth has occurred in the labor market area since 1961. Employment has increased 65.1 percent with notable increases in the apparel, textiles, leather, primary metals, machinery and metal products industries.

Despite important industrial gains in recent years, the area still has a deficit of 2,661 manufacturing jobs when measured against the national industrial-employment ratio. This indicates an area where the potential for additional manufacturing production is excellent.

Resources for Growth

1. There is a current estimated labor supply of 1,660 men and 2,450 women available for industrial jobs in the labor market area. In addition, 4,300 young men and 4,120 young women will become 18 years of age by 1978 and potentially available for employment.

2. The Louisville & Nashville Railroad provides freight service to Cynthiana, which is also served by U. S. Highways 62 and 27 and Kentucky Highways 32, 36, and 356. Interstate 75 is only 15 miles away while the

junction of Interstate 64 and the Mountain Parkway is 30 miles away. The local airport has one paved runway of 3,200 feet with the nearest commercial air service available 34 miles away at Lexington.

3. Natural gas service is provided by Columbia Gas of Kentucky while electric power is provided by the Kentucky Utilities Company and the Harrison County RECC. Several distributors of propane gas and distillate fuel oil are located in Cynthiana. The local source of raw water is the South Licking River. There is an excess of 1,500,000 gallons per day of treated water available.

4. Cynthiana has six industrial sites ranging in size from 15 to 140 acres.

5. Four universities, two senior colleges, two junior colleges, one community college, and a technical institute are within a 55-mile radius of Cynthiana.

A vocational extension center located at Cynthiana offers career training in seven fields. The nearest area vocational school, in Lexington, offers training in twenty course areas.

Community Programs for Improvement

Community programs recently implemented include rebuilding and resurfacing of seventy percent of the city's streets within the last three years and construction of a 500,000-gallon elevated water tower.

Within the Harrison County School System, \$1.4 million has been spent in the construction of an auditorium, a materials resource center, and ten classrooms with carpeting and air conditioning included in all the new facilities. An Air Force ROTC program has been added at the high school and the athletic track resurfaced. The curriculum has been expanded with the addition of a Phase Elective English program at the high school. Special services by the school system for handicapped students include an equipped mobile classroom and special classes for the mentally retarded, grades 1-12, with a work study program at the high school level.

The Cynthiana Fire Department has recently acquired a new ladder truck with a 1,000-gallon per minute pumping capacity and anticipates the addition of new equipment for its rescue service. The Harrison County Fire Department has also added a new utility truck to its inventory of equipment.

The renovation of both the Harrison Hotel and the Ben Franklin Store was completed in 1972. At least three new businesses have been added since 1971, the largest of which is a discount center.

South Central Bell Telephone Company continues to lay more underground cable in the Cynthiana area and has recently added touch tone service.

The Municipal Housing project has expanded with the addition of 75 more units for low-income and elderly residents with recreational facilities included. Six subdivisions are currently under development with residential building sites still available.

Recreational improvements are extensive with three new playgrounds, two of which will be lighted for night use. Two tennis courts, one baseball diamond and five basketball courts will also be completed in 1972.

Improvement in utility service by the municipal water and sewer companies is exemplified by plans to complete a water distribution loop around Cynthiana and to double the capacity of the sewage plant.

Recreation, Entertainment and Livability

Cynthiana's location on the South Fork of the Licking River provides its residents a wide variety of recreational activities which include boating, fishing, and water skiing. In addition, a charity horse show is held annually as is the 4-H and Adult Fair.

Variety is the keynote to recreation in the Cynthiana area. Cynthiana is close to diversified recreational interests such as camping, horse racing, and intercollegiate sports as well as cultural and historical attractions. The Blue Licks Battlefield State Park, honoring the last battle of the American Revolution, offers camping and remnants of the Old Buffalo Trace, the historic path to the salt licks. Kincaid Lake State Park, 22 miles from Cynthiana, has fishing, swimming, and camping facilities.

Additional recreation is available to Cynthiana in Lexington which offers both thoroughbred and harness racing at Keeneland and the Red Mile, respectively, as well as tours of world famous horse farms and the homes of Henry Clay and John Hunt Morgan.

Major intercollegiate sports are available at the University of Kentucky in Lexington as well as at Georgetown College in Georgetown and Kentucky State University at Frankfort.

Frankfort lies 39 miles southwest of Cynthiana and houses the State Capitol, the famous Floral Clock, several historical buildings and museums, and the burial site of Daniel Boone.

THE LABOR MARKET

POPULATION TRENDS ^{1/}

Area	Population			Percent Change	
	1970	1960	1950	1960-70	1950-60
Cynthiana	6,356	5,641	4,847	+12.7	+16.4
Labor Market Area	86,428	83,257	84,885	+ 3.8	- 1.9
Harrison County	14,158	13,704	13,736	+ 3.3	- 0.2
Bourbon County	18,476	18,178	17,752	+ 1.6	+ 2.4
Bracken County	7,227	7,422	8,424	- 2.6	-11.9
Grant County	9,999	9,489	9,809	+ 5.4	- 3.3
Nicholas County	6,508	6,677	7,532	- 2.5	-11.4
Pendleton County	9,949	9,968	9,610	- 0.2	+ 3.7
Robertson County	2,163	2,443	2,881	-11.5	-15.3
Scott County	17,948	15,376	15,141	+16.7	+ 1.6

GENERAL EMPLOYMENT CHARACTERISTICS, 1970 ^{2/}

Major Employment Group	Employment	
	Harrison County	Labor Market Area
TOTAL	5,400	28,200
Agricultural	1,300	7,500
Nonagricultural	4,100	20,700
Manufacturing	1,500	5,215
Government	500	3,700
Trade and Services	1,182	4,776
Other	918	7,009

MANUFACTURING EMPLOYMENT TRENDS BY INDUSTRY
SEPTEMBER 1971 AND 1961 ^{3/}

Industry	Harrison County			Labor Market Area		
	1971	1961	% Change	1971	1961	% Change
TOTAL	1,371	818	+ 67.6	5,550	3,361	+ 65.1
Food & kindred products	179	140	+ 27.9	292	222	+ 31.5
Apparel, textiles, leather	139	163	- 14.7	1,780	815	+118.4
Lumber & furniture	4	1	+ 300.0	25	90	- 72.2
Printing, publishing, paper	107	16	+ 568.8	160	66	+142.4
Chemicals, petroleum, coal, rubber	16	27	- 40.7	515	309	+ 66.7
Stone, clay & glass	6	5	+ 20.0	22	33	- 33.3
Primary metals	220	0	0	324	68	+376.5
Machinery, metal products & equipment	526	462	+ 13.9	1,768	1,435	+ 23.2
Other	174	4	+4,250.0	664	323	+105.6

MAJOR CYNTHIANA MANUFACTURING FIRMS,
THEIR PRODUCTS AND EMPLOYMENT ^{4/}

<u>Firm</u>	<u>Product</u>	<u>Employment</u>		
		<u>Total</u>	<u>Male</u>	<u>Female</u>
Blake & Johnson Co.	Screws	92	90	2
Blue Grass Industries	Men's knit underwear	195	13	182
Bundy Corporation	Steel tubing, refrigeration coils	227	7	220
Cellu-Products	Paper towels, napkins, tissue	60	49	11
Cynthiana Manufacturing Co., Division of Acme Cleveland (Cleveland Wire Drill)	Wire & tool blanks	50		
Eaton Corporation	Iron foundry, iron castings	70	60	10
Ladish Co., Kentucky Division	Stainless steel valves, forged steel fittings, fittings, industrial saw blades	415	380	35
Minnesota Mining & Manufacturing Co.	Business machines	172		
S. P. Owen Tobacco	Tobacco processing	129	97	32
Joseph E. Seagram & Sons, Inc.	Whiskey	71	70	1
Webber Farms, Inc.	Sausage, lard	110	100	10

WAGE RATES FOR SELECTED OCCUPATIONS
CYNTHIANA, KENTUCKY ^{5/}

<u>Classification</u>	<u>Wages Per Hour</u>		
	<u>Starting</u>	<u>Maximum</u>	<u>Prevailing</u>
<u>Production Employees</u>			
Assembler	\$2.10	\$2.90	\$2.55
Inspector	2.10	3.00	2.60
Production Laborer	2.30	2.75	2.50
Welder, Arc or Acetylene (Class-A)	2.40	3.50	3.00
<u>Service Employees</u>			
Electrician (Class-A)	\$2.75	\$3.80	\$3.10
Laborer	1.70	2.20	1.90
Machinist	2.60	3.60	3.10
Mechanic, Maintenance	2.20	3.20	2.75
Truck Driver, Industrial (Class-A)	2.10	2.90	2.60
<u>Office Employees</u>			
Bookkeeper	\$2.00	\$3.00	\$2.70
Draftsman	2.20	3.25	2.85
Receptionist	2.00	2.70	2.45
Secretary	2.00	3.00	2.60
Typist	1.90	2.60	2.30

LABOR ORGANIZATIONS

<u>Union</u>	<u>Representing workers at:</u>
Distillery, Rectifying, Wine and Allied Workers; International Brotherhood of Firemen and Oilers	Joseph E. Seagram & Sons, Inc.
United Steel Workers of America, Local 7513	Ladish Co., Kentucky Division

CURRENT AND FUTURE LABOR SUPPLY -
CYNTHIANA LABOR MARKET AREA

<u>Area</u>	<u>Current Labor Supply, 1971</u> ^{6/}			<u>Future Labor Supply by 1978</u> ^{7/} (Becoming 18 Years of Age)		
	<u>Total</u>	<u>Male</u>	<u>Female</u>	<u>Total</u>	<u>Male</u>	<u>Female</u>
Labor Market Area	4,113	1,662	2,451	8,415	4,296	4,119
Harrison	570	265	305	1,378	686	692
Bourbon	606	192	414	1,819	944	875
Bracken	475	166	309	692	355	337
Grant	419	145	274	996	521	475
Nicholas	473	237	236	630	335	295
Pendleton	639	261	378	1,052	545	507
Robertson	348	115	233	184	90	94
Scott	583	281	302	1,664	820	844

TOTAL PERSONAL INCOME ^{8/}

<u>Area</u>	<u>1970</u>	<u>1959</u>	<u>% Change</u>
Harrison County	\$ 47,005,000	\$ 21,258,000	+121.1
Labor Market Area	222,677,000	106,110,000	+109.9
Kentucky	9,900,725,000	4,655,000,000	+112.6

PER CAPITA PERSONAL INCOME ^{9/}

<u>Area</u>	<u>1970</u>	<u>1959</u>	<u>% Change</u>
Harrison County	\$3,320	\$1,574	+110.9
Labor Market Area	\$1,914 to 3,320	\$983 to 1,574	N.A.
Kentucky	3,075	1,552	+ 98.1

EDUCATION

Public Schools

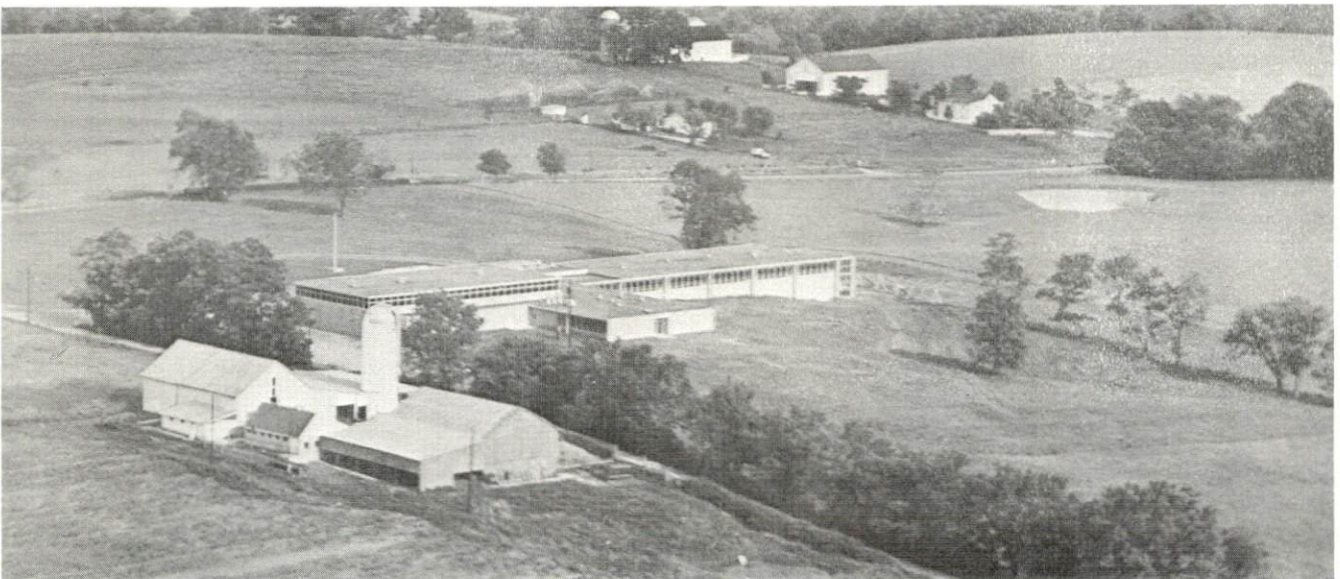
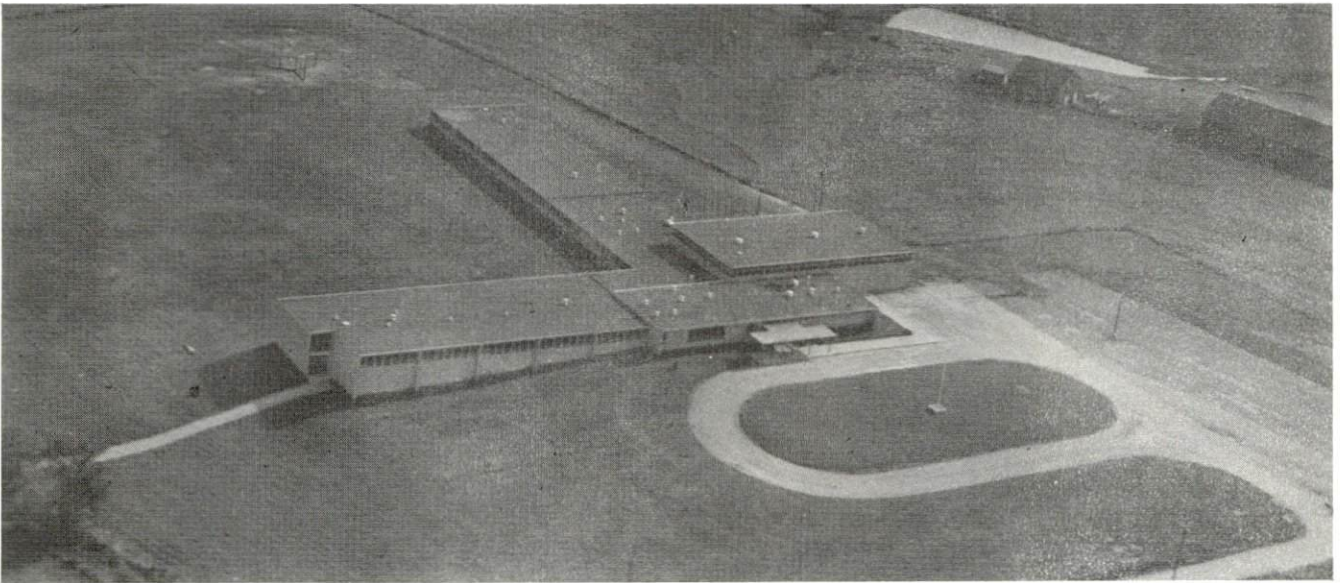
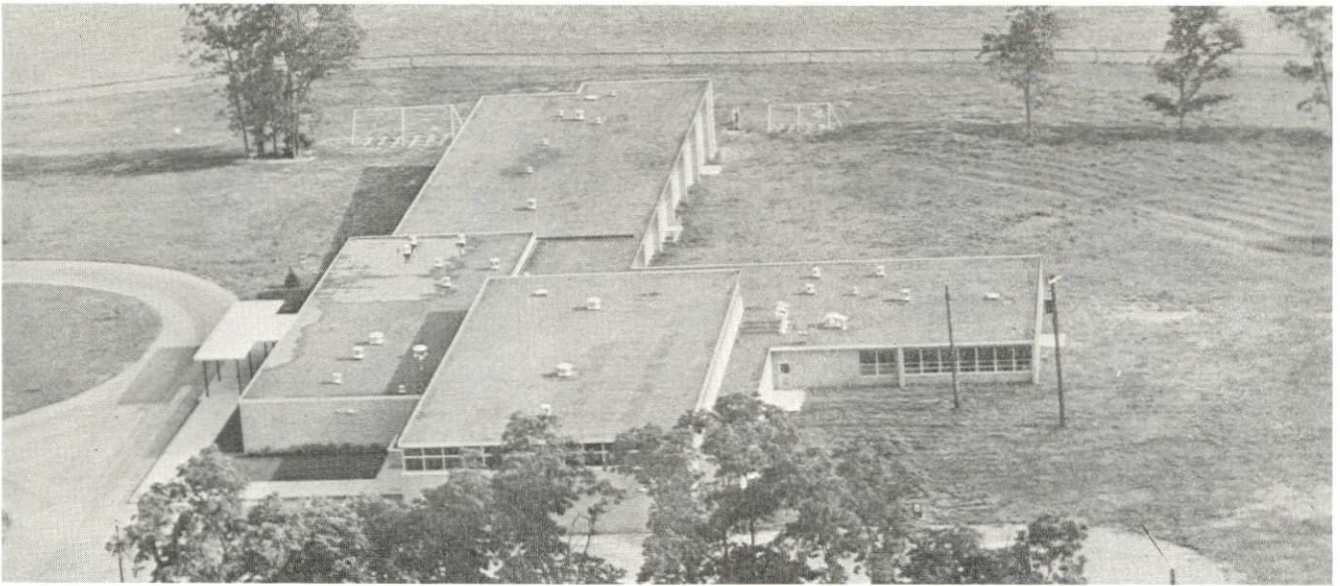
Harrison County

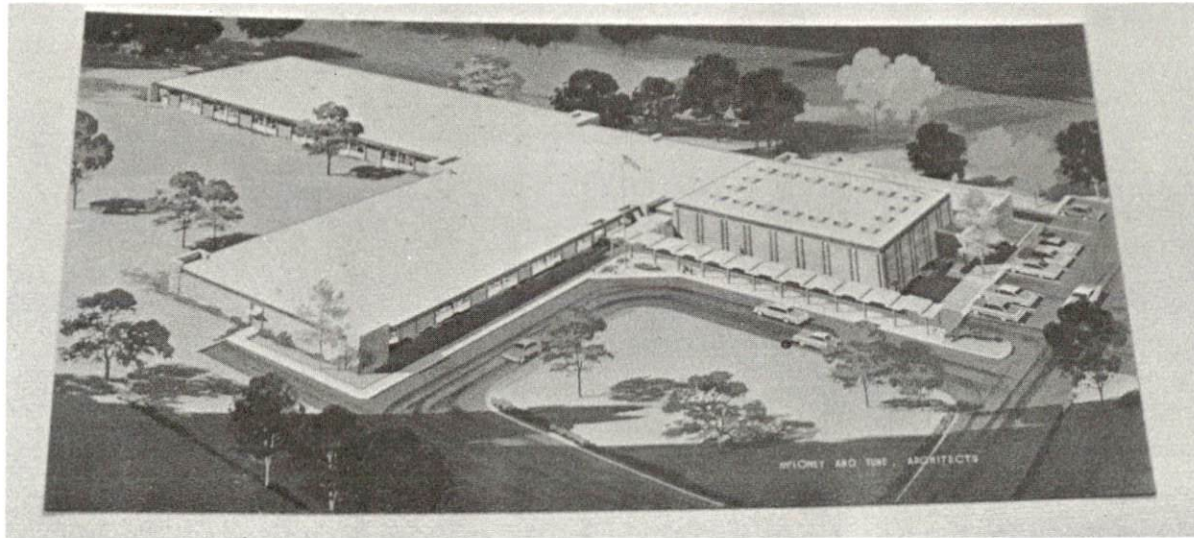
Total Enrollment	3,175
Elementary	1,665
Junior High	550
High School	960
Student-Teacher Ratio	20-1
Elementary	22-1
Junior High	20-1
High School	20-1
State Rating of High School	Comprehensive
Other Accreditations	Southern Association of Colleges and Schools
Percent High School Graduates to College	40.8
Current Expenditures Per Pupil	\$533.18
Bonded Indebtedness, June 30, 1971	\$3,527,000

Parochial School

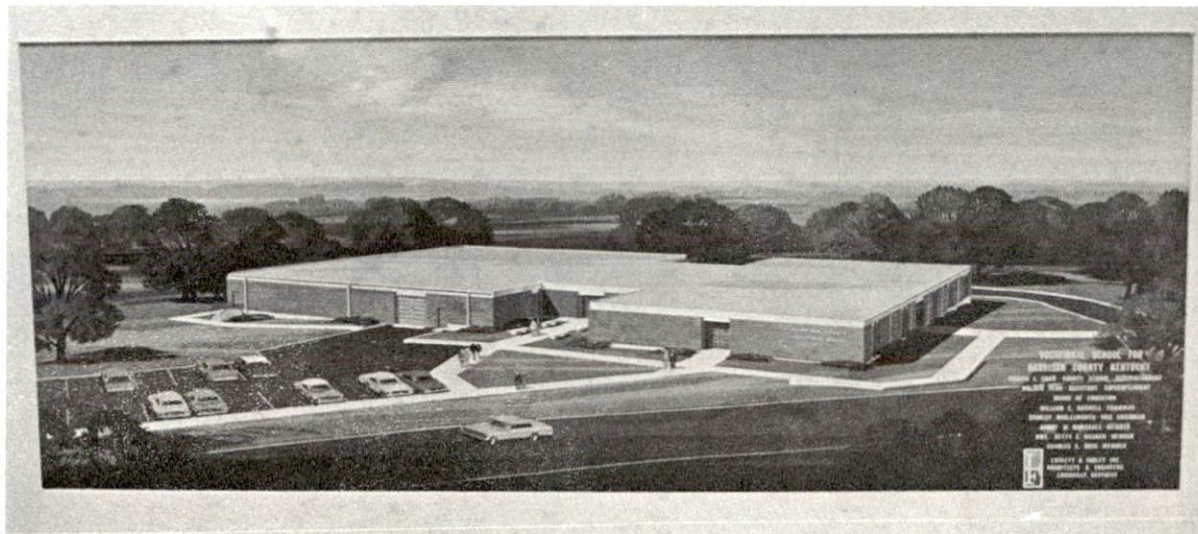
Total Enrollment	68
Elementary	68
Student-Teacher Ratio	22-1
Elementary	22-1

NEW ELEMENTARY SCHOOLS





HARRISON COUNTY JUNIOR HIGH



VOCATIONAL-TECHNICAL SCHOOL
CYNTHIANA

Vocational Schools

	<u>Nearest Area School</u>	<u>Nearest Extension Center</u>
Location	Central Kentucky Area Vocational School Lexington	Harrison County Extension Center Cynthiana
Miles Distant	30	
Curriculum	Accounting Jr. Management Data Processing General Clerical Secretarial-Steno Practical Nursing Distributive Education Electronics (Communications) Technical Drafting Auto Body Repair Auto Mechanics Commercial Foods Drafting Electricity Machine Shop Office Machine Repair Printing Radio and TV Repair Sheet Metal Welding, Tool and Die Design Cosmetology	Auto Mechanics Carpentry Drafting General Clerical Machine Shop Secretarial-Steno Welding

Colleges and Universities

<u>Name</u>	<u>Area - Within 50 Miles</u>		<u>Highest Degree Conferred</u>
	<u>Location</u>	<u>Enrollment</u>	
University of Kentucky	Lexington	19,258	Ph.D., M.D. D.M.D., J.D.
Transylvania University	Lexington	775	Masters
Eastern Kentucky University	Richmond	10,170	Masters
Georgetown College	Georgetown	1,299	Masters
Kentucky State University	Frankfort	1,970	Baccalaureate
Asbury College	Wilmore	1,091	Baccalaureate
Lexington Technical Institute	Lexington	*	Associate
Maysville Community College	Maysville	325	Associate
Midway Junior College	Midway	187	Associate
Southeastern Christian College	Winchester	122	Associate

*Included in UK enrollment.

TRANSPORTATION

Rail

Line serving Cynthiana - Louisville and Nashville Railroad Company
 Services - Freight, switching facilities, siding space; REA Express
 pickup and delivery service through Lexington office.

RAILWAY TRANSIT TIME FROM CYNTHIANA, KENTUCKY, TO: 10/

City	No. of Days		City	No. of Days	
	CL			CL	
Atlanta, Ga.	2		Los Angeles, Calif.	5	
Birmingham, Ala.	3		Louisville, Ky.	2	
Chicago, Ill.	2		Nashville, Tenn.	2	
Cincinnati, Ohio	1		New Orleans, La.	3	
Cleveland, Ohio	2		New York, N. Y.	3	
Detroit, Mich.	3		Pittsburgh, Pa.	2	
Knoxville, Tenn.	1		East St. Louis, Ill.	3	

Truck Service

<u>Company</u>	<u>Home Office</u>
Dixie-Ohio Express, Inc.	Akron, Ohio
Ecklar-Moore Express, Inc. *	Lexington, Kentucky
Germann Bros. Transportation, Inc.	Aberdeen, Ohio
McLean Trucking Company	Winston-Salem, North Carolina
Motor Freight Corporation	Terre Haute, Indiana
Turner Expediting Service	Louisville, Kentucky

HIGHWAY MILES AND TRUCK TRANSIT TIME IN DAYS FROM CYNTHIANA, KENTUCKY, TO SELECTED MARKET CENTERS

City	Highway Miles	Delivery Time <u>11/</u>		City	Highway Miles	Delivery Time	
		LTL	TL			LTL	TL
Atlanta, Ga.	395	3	2	Los Angeles, Calif.	2,238	6	5
Birmingham, Ala.	455	3	2	Louisville, Ky.	79	overnight	
Chicago, Ill.	343	2	1	Nashville, Tenn.	276	2	1
Cincinnati, Ohio	54	overnight		New Orleans, La.	784	3	2
Cleveland, Ohio	304	2	1	New York, N. Y.	711	3	2
Detroit, Mich.	318	2	1	Pittsburgh, Pa.	352	2	1
Knoxville, Tenn.	201	2	1	St. Louis, Mo.	373	2	1

Note: Truckload delivery, when necessary, can be expedited one day less than shown above.

*Terminal located in Cynthiana.

Air

<u>Local</u>	<u>Nearest Commercial</u>
Cynthiana-Harrison County Airport	Blue Grass Field, Lexington
Location: 1 1/2 miles south of Cynthiana	34 miles from Cynthiana
Runways: one paved	three paved
Length: 3,200 feet	6,500 feet, 3,500 feet, 3,500 feet
Traffic	
Control: Wind sock and lighted wind tee	Tower, guards, approach ground control, ILS system
Lighting: Runway lights - sundown to sunrise	Approach lighting system, beacon, runways and obstructions lighted
Services: 80-100 octane, hangar, tie-down, taxi, and U-Drive-It	80, 100 and 145 octane; jet fuel; major A & E repairs; storage; restaurant; Weather Bureau and flight instruction; charter service; taxi; U-Drive-It service; Eastern, Delta, Piedmont and Allegheny Airlines

Bus

Southern Greyhound Bus Lines

Taxi

City Cab Company, 6 a.m. to 11 p.m.; radio-dispatched service

Rental Services

Car, truck and bus rentals available in Lexington, 30 miles away.

POWER AND FUEL

Electricity

Company serving Cynthiana and Harrison County - Kentucky Utilities Company

Source of power - Kentucky Utilities Company

Total generating capacity - 1,215,000 KW

Industrial rates furnished by - Kentucky Utilities Company, Cynthiana office

Company serving Harrison County - Harrison County RECC

Source of power - East Kentucky Power Cooperative

Total generating capacity - 548,000 KW

Industrial rates furnished by - Harrison County RECC, P. O. Box 312, Cynthiana, Kentucky 41031

Natural Gas

Company serving Cynthiana - Columbia Gas of Kentucky

Source of supply - Columbia Gas Transmission Company

Size of transmission mains - 6 inches (distributor)

Distribution mains - 2, 3, 4, 6, 8 and 10 inches

Distribution pressure - 4 ounces to 30 psi

Btu content - 1,020; Specific gravity - 0.6

Rates - For industrial rates contact Columbia Gas of Kentucky, Lexington, Kentucky.

Other Fuels

Propane dealers in Cynthiana:

Doxol Gas of Cynthiana

Stan Harvey Gas Company

Distillate Fuel Oil - Bulk Stations:

Coe Oil Service

Standard Oil Company

Texaco

Ashland Oil Company

Residual Fuel Oil - Arrangements must be made with a refinery.

WATER AND SEWERAGE

Water

Company serving Cynthiana - City of Cynthiana Water Department
Source - South Licking River
Treatment plant capacity - 3,000,000 gallons per day
Average daily consumption - 1,000,000 gallons
Peak daily consumption - 1,500,000 gallons
Type treatment - Alum, lime, fluoride, chlorine and post chlorine,
quick mix, flocculation, sedimentation and filtration
Storage capacity - 1,700,000 gallons
Size mains - 4, 6, 8, 10, 12 and 16 inches
Average pressure - approximately 90 psi
Average temperature - 55 degrees F.

MONTHLY WATER RATES FOR WHOLESALE AND INDUSTRIAL CONSUMERS

First	2,000 gallons (or part thereof)	\$2.50
Next	6,000 gallons	.90 per M gallons
Next	12,000 gallons	.60 per M gallons
Next	30,000 gallons	.45 per M gallons
Next	50,000 gallons	.35 per M gallons
Next	900,000 gallons	.25 per M gallons
All over	1,000,000 gallons	.18 per M gallons

There is an additional charge of 33 1/3 percent of the above schedule of rates charged to consumers for water delivered outside the corporate limits of the city.

Name of water district - Harrison County Water Association
Area served - Area immediately surrounding Cynthiana
Date when water district began operating - October 1970
Source of supply of treated water - City of Cynthiana Water Department
Amount of water which can be purchased in a 24-hour period - Contract contains no limitation
Average amount of water used in a 24-hour period - 40,280 gallons
Water storage capacity - 90,000 gallons
Average pressure - 55 psi
Average temperature - 50 degrees F.
Size mains - 6 inch

Rates:

First	2,000 gallons	\$6.00 (Minimum)
Next	1,000 gallons	1.25 per M gallons
Next	2,000 gallons	1.00 per M gallons
Next	45,000 gallons	.80 per M gallons
Over	50,000 gallons	.60 per M gallons

Surface water sources - Licking River and South Fork of Licking River
Average discharge - Licking River at McKinneysburg 2,909 cfs (33 years USGS); South Fork of Licking River at Cynthiana 728 cfs (32 years USGS)
Expected ground water yield - 5 to 200 gpm from area adjacent to the South Fork of Licking River and southern portion of county; 5 gpm or less from remainder of county

Sewerage

Company serving Cynthiana - City of Cynthiana
Design capacity - 900,000 gallons per day
Average daily flow - 850,000 gallons
Treatment - Primary and Secondary
Type treatment - Comminutor, grit collector, clarifiers, high rate filter, heated digester and drying beds
Treated effluent discharged into - South Licking River
Size of sanitary mains - 6, 8, 10, 12, 18 and 24 inches
Size of storm mains - up to 24 inches
Rates - 50 percent of monthly water charge

LOCAL GOVERNMENT

City

Structure - Mayor - 4-year term; 4 commissioners - 4-year terms
 Budget 1970-71 - General Fund \$399,398.80; Water and Sewer Fund
 \$279,933.61

Fees and licenses - Occupational license - 1 1/2 percent of salaries and
 net profits - maximum \$200; car stickers - \$5 each; truck stickers -
 \$5 each; regulatory licenses vary according to the type of business

County

Structure - County Judge - 4-year term; 8 magistrates - 4-year terms
 Budget 1971-72 - General Fund \$145,400; Road Fund \$136,976

Assessed Value of Property, 1971

<u>Classes of Property</u> *	<u>Cynthiana</u>	<u>Harrison County</u>
Real Estate	\$28,502,892	\$96,388,165
Tangibles	8,317,723	28,165,779
Public Service	2,017,900	9,649,912 (1970)

Local General Property Tax Rates Per \$100 of Assessed Valuation, 1971 ^{12/}

<u>Taxing Unit</u> **	<u>Cynthiana</u>	<u>Harrison County</u>
State	\$.015	\$.015
County	.176	.176
School	.564	.564
City	.300	--
Total	\$1.055	\$.755

Planning and Zoning

Agency - Cynthiana Municipal Planning Commission
 Plans completed in 1972 - Comprehensive Plan, Subdivision Regulations,
 Zoning Ordinance and Housing Study
 Plan completed in 1971 - Urban Transportation Study
 Codes adopted - Building, housing, plumbing, electric, fire and gas codes
 Other programs - Public Housing; Workable Program for Community
Improvement

*Property assessed at 100 percent of fair value.

**Manufacturing machinery, raw materials inventories and goods in process
 inventories are not subject to local tax. State rate is only \$.15 per \$100.

Safety

<u>Police</u>	<u>Cynthiana</u>	<u>Harrison County</u>
Total staff	16	3
Radio-patrol cars	4	2
Other equipment	radio equipped motorcycle, interconnection with state police, communications with surrounding communities, two walkie talkies	two walkie talkies

Fire

American Insurance Association Fire Rating	6	
Full-time staff	9	
Volunteers	27	76
Equipment:		
1,000 gpm pumpers	2	
750 gpm pumpers	1	
ladder trucks		2 with 350 gpm pumps, portable pumping equipment
other	station wagon	

Rescue Service

Cynthiana Fire Department Rescue Squad:

Number of volunteers - 20

Equipment - Resuscitator, 14-foot boat, ropes, pompier safety belts,
life jackets, dragging equipment, portable generator and lights

Personnel training - 10-hour training course in rescue operations

Harrison County Volunteer Fire Department Rescue Squad

Number of volunteers - 15

Equipment - Dragging equipment, boat and motor, large generator and
lights, small foam pump, utility truck, 2 air packs

Personnel training - first aid and rescue training

Civil Defense

Three stocked shelters

Appointed offices filled

Preparedness training program

Sanitation

Cynthiana

Type service

Municipal

Cost:

residential

\$1.50

business

varies according to volume
collected

Collection frequency:

residential

weekly

business

daily

Disposal method

sanitary land fill

HEALTH

Hospital

<u>General Hospital</u>	<u>Location</u>	<u>Beds</u>
Harrison Memorial Hospital	Cynthiana	83 acute general care 10 extended care

General hospital facilities - 2 operating rooms, laboratory, X-ray, EKG, physical therapy, inhalation therapy, delivery room and new born nursery

Medical staff - 9 physicians, 18 registered nurses, 4 licensed practical nurses, 9 graduate licensed practical nurses, 38 nurses' aides, 3 registered lab technicians, physical and inhalation therapist, pharmacist; radiologist, pathologist and ADA dietician all on consulting basis

Nursing Homes

	<u>Number</u>	<u>Beds</u>
Extended care homes	2	78
Personal care homes	3	152

Public Health

Facility - Harrison County Health Department

Staff - Full-time staff - two registered sanitarians, three registered nurses, one health aide, two clerks; part-time staff - health officer, nutritionist, health educator, dentist, physical therapist, psychiatrist

Budget 1972-73 - \$80,552.83

OTHER LOCAL FACILITIES

Communications

Telephone - South Central Bell Telephone Company
Services - All standard services, direct distance dialing, WATS service, FX lines, data-phone service, touch tone service

Telegraph - Western Union Telegraph Company
Services - Telephone delivery and messenger service, candy-gram and flowers, teletype service

Postal - U. S. Post Office
Class - first
Mail received - twice daily
Mail dispatched - twice daily

Newspaper - Cynthiana Democrat
Weekly and circulation - 6,000
Other papers received from - Louisville, Lexington and Newport, Kentucky

Radio - WCYN-AM-FM
Stations received from - Louisville and Lexington, Kentucky; and Cincinnati, Ohio

Television -
Cable service
Reception from - Lexington and Louisville, Kentucky; Cincinnati, Ohio
Kentucky Educational Television - Lexington transmitter, Channel 46
Owenton transmitter, Channel 52

Library Services

Public library - Cynthiana Public Library
Size collection - 35,594 volumes
Circulation, 1971 - 158,442 (includes Bookmobile)
Services - Bookmobile, pamphlets, films and filmstrips, audio-visual equipment, periodicals, recordings, framed paintings, sports equipment, talking books for the blind, delivery to the handicapped, story hour, Library Club, color TV for Kentucky ETV classes, photocopying and duplicating, telephone reference, sponsor of physical fitness and bridge classes, community room for meetings

Religious Institutions

Number of churches - 23

Denominations - Baptist, Catholic, Christian, Episcopal, Methodist, Nazarene, Presbyterian, Assembly of God, Church of God, Seventh Day Adventist, Jehovah's Witnesses

Financial Institutions

<u>Bank</u>	<u>Statement as of December 31, 1971</u>	
	<u>Assets</u>	<u>Deposits</u>
Farmers National Bank	\$12,923,642.79	\$11,717,246.76
The Harrison Deposit Bank and Trust Company	7,160,452.52	6,402,227.69
The National Bank of Cynthiana	18,463,295.61	15,852,016.65
<u>Savings and Loan Association</u>	<u>Assets</u>	<u>Shared Accounts</u>
First Federal Savings and Loan Association of Cynthiana	\$10,235,293.37	\$ 9,582,036.07

Hotels and Motels

Total number - 2

Units - 77

Clubs and Organizations

Business and Civic - Chamber of Commerce, Jaycees, Kiwanis, Rotary, Ministerial Association, Red Cross, Welcome Wagon, National Farmers Organization, Farm Bureau

Fraternal - American Legion, Masonic Lodge, Disabled American Veterans, VFW, Elks, Odd Fellows and Lions Club

Women's - Woman's Club, Band PW Club, DAR, Eastern Star, Homemakers, Garden Club, Elks Auxiliary, American Legion Auxiliary, VFW Auxiliary, United Daughters of the Confederacy, Junior Woman's Club, Hospital Auxiliary, Democratic Women's Club, Republican Women's Club, Trials and Trowels Club

Youth - Candy Stripers, Children of the American Revolution, Boy Scouts, Cub Scouts, Girl Scouts, Brownies, FFA, FHA, 4-H, Leo's Club

Other - Harrison County Coon Hunter's Club, Rod and Gun Club, Thoroughbred Club, Inquisitors' Club

RECREATION

Local

Public Recreation Facilities

Supervised program - yes

Playgrounds - 8

Swimming pool - 1

Tennis courts - 4

Baseball diamonds - 3

Football field - 1

Basketball courts - 5

Other - picnic ovens and tables; boating, fishing, water skiing on South Fork of Licking River; Y Teen Club center

Private Recreation Facilities

Country club - 1

Golf course - 1 (9-hole)

Swimming pool - 1

Movie theaters - 1 indoor and 1 drive-in

Bowling alley - 1 (14 lanes)

Tourist Attractions

Charity Horseshow, 4-H and Adult Fair, Courthouse and two cemeteries with historical markers

Area (Within 50 miles)

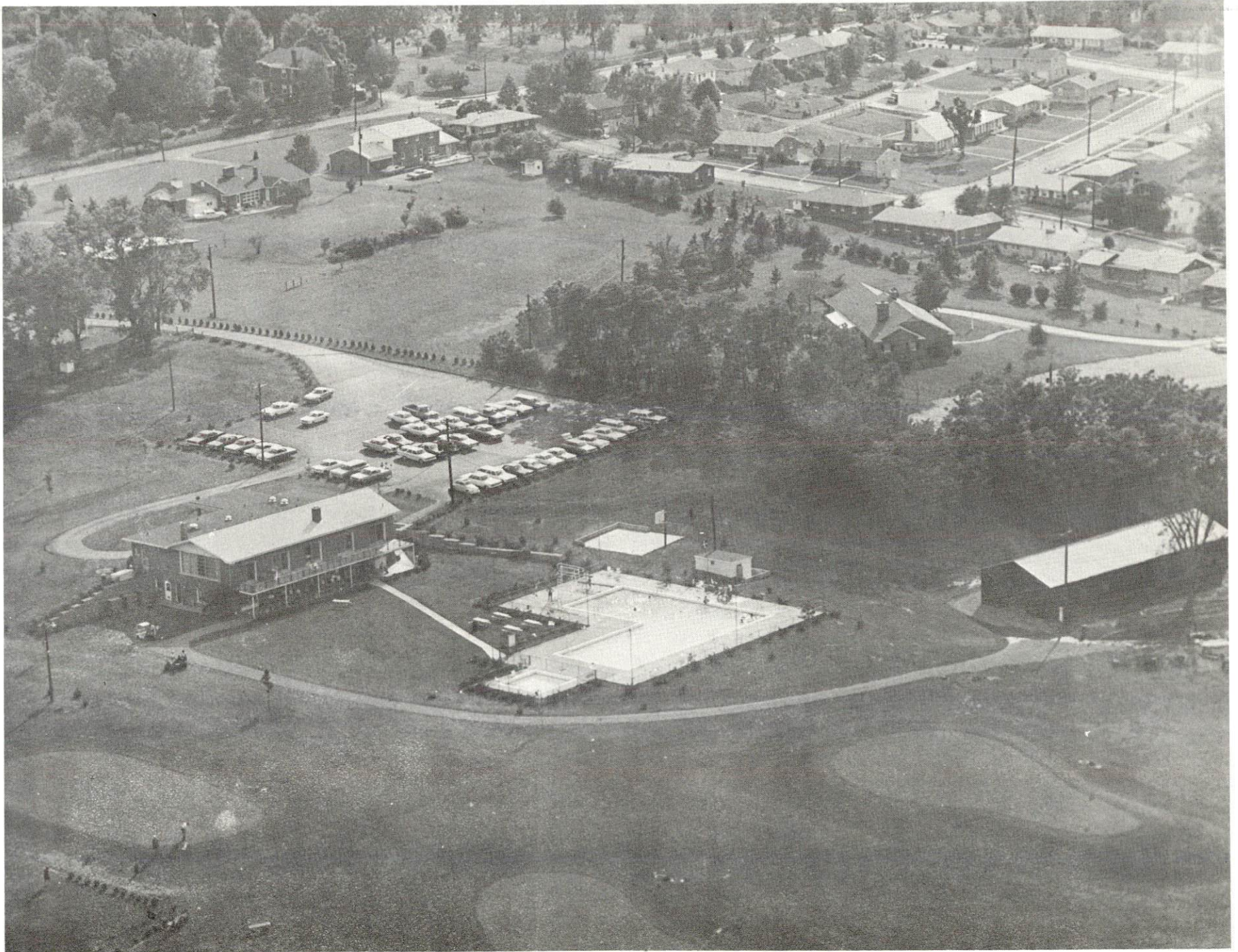
Big Bone Lick State Park

Blue Licks Battlefield State Park

Kincaid Lake State Park

Lexington, 30 miles away, offers horse racing at Keeneland and the Red Mile; major intercollegiate sports; sight seeing tours of horse farms and the homes of Henry Clay and John Hunt Morgan.

Frankfort, 39 miles away, houses the State's Capitol as well as historical buildings, museums and the grave of Daniel Boone.



CYNTHIANA COUNTRY CLUB

AGRICULTURE - NATURAL RESOURCES - CLIMATE

Agriculture 13/

	<u>Harrison County</u>	<u>Labor Market Area</u>
Total land area (acres)	197,120	1,383,680
Percent of area in farm land	93.6	82.6
Number of farms	1,468	8,387
Average size of farms (acres)	125.7	136.2
1964 value of all farm products	\$8,104,112	\$49,794,556
Value per farm	5,521	5,937
Total crop sales	4,816,497	29,312,587
Total livestock & livestock products	3,287,535	20,449,059
1969 agricultural production included:		
Burley tobacco (lbs.)	9,265,000	57,602,000
Corn (bu.)	369,000	2,119,000
Cattle and calves (number)	37,800	206,600
Hogs and pigs (number)	13,900	70,400
Milk production, 1968 (lbs.)	16,800,000	155,135,000

Natural Resources

Principal mineral resources	Limestone
Acres of commercial forest land	33,400 (17% of land area)
Most abundant tree species	White oak, red oak, hickory, ash, hard and soft maple, red cedar, black walnut

Climate 14/

	<u>Harrison County</u>
Temperature	
Annual mean (30-year record)	55.6 degrees
Average annual 1971	55.6 degrees
Record highest, July, 1966* (8-year record)	98.0 degrees
Record lowest, January, 1966* (8-year record)	-10.0 degrees
Seasonal heating degree days (30-year record)	4,683
Precipitation	
Mean annual total (30-year record)	44.73 inches
Mean annual snow and sleet (27-year record)	16.50 inches
Total precipitation 1971	44.67 inches
Mean number days precipitation (.01 inch or more) (27-year record)	128
Average number days thunderstorms (27-year record)	47
Prevailing winds (17-year record)	South

*Also on earlier dates, months and years.

HISTORY

Harrison County is located in the north central part of Kentucky in the Bluegrass Region with a land area of 308 square miles. The South Fork of the Licking River crosses the gently rolling countryside of the county from northeast to northwest. The well drained land of red clay and limestone composition was first settled in 1775. This primary settlement at Cynthiana was led by John Hinkson who sailed down the Ohio and up the Licking rivers along with a group of fifteen settlers.

In 1793, a year after Kentucky herself became a state, Harrison became Kentucky's seventeenth county, comprised of land taken from Scott and Bourbon Counties. The county itself was named for Colonel Benjamin Harrison who had served in the convention at Danville which led to Kentucky's statehood.

Cynthiana, located in the south eastern corner of the county became the county seat, having been named for the two daughters (Cynthia and Anna) of Robert Harris who owned the townsite.

By early in the 19th century, a flour mill and a woolen factory were operating in Cynthiana. Later in the century the distilling of whiskey would become a prime economic activity for the county, with 30 distilleries in operation by 1874.

In 1800, Harrison County had 4,350 residents. By 1950, this figure had reached 13,736, followed by a slight decline to 13,704 in 1960 and growth to 14,158 in 1970. Cynthiana's population now exceeds 6,000. Current personages of note include Judge Mac Swinford who is a lawyer, legislator, U. S. District Judge and author.

Since 1961, manufacturing employment in Harrison County has increased 67.6 percent. Cynthiana's major industrial firms are: Ladish Company which makes stainless steel valves; the Bundy Corporation, producers of steel tubing and refrigeration coils; Minnesota Mining and Manufacturing Company which produces business machines, and Blue Grass Industries, makers of men's knit underwear.

SOURCES OF INFORMATION

- 1/ U. S. Department of Commerce, Bureau of the Census, Census of Population, 1950, 1960, 1970.
- 2/ Kentucky Department of Economic Security, Division of Research and Statistics.
- 3/ Kentucky Department of Economic Security, Number of Workers in Manufacturing Industries Covered by Kentucky Unemployment Insurance Law Classified by Industry and County, September 1971 and 1961.
- 4/ Kentucky Department of Commerce, Division of Research and Planning.
- 5/ Kentucky Department of Economic Security, Division of Employment Services, Lexington Office.
- 6/ Kentucky Department of Economic Security, Kentucky Labor Supply Estimates by County, January 1971.
- 7/ Kentucky Department of Commerce, Future Labor Supply by 1978.
- 8/ University of Kentucky, Office of Development Services and Business Research, Total Personal Income for Kentucky.
- 9/ University of Kentucky, Office of Development Services and Business Research, Per Capita Income in Kentucky.
- 10/ Louisville and Nashville Railroad Company, 908 Broadway, Louisville, Kentucky 40201.
- 11/ Ecklar-Moore Express, Inc., Lexington, Kentucky.
- 12/ Kentucky Department of Revenue, Kentucky Property Tax Rates, 1971.
- 13/ U. S. Department of Commerce, Bureau of the Census, Census of Agriculture, 1964. U. S. Department of Agriculture and Kentucky Department of Agriculture, Kentucky Agricultural Statistics, 1970.
- 14/ U. S. Department of Commerce, Environmental Science Services Administration, Climatological Data, 1971.

All other information was obtained from governmental offices, local businesses and organizations.