

1970

Industrial Resources: Hopkins County - Madisonville

Kentucky Library Research Collections
Western Kentucky University, spcol@wku.edu

Follow this and additional works at: https://digitalcommons.wku.edu/hopkins_cty

 Part of the [Business Administration, Management, and Operations Commons](#), [Growth and Development Commons](#), and the [Infrastructure Commons](#)

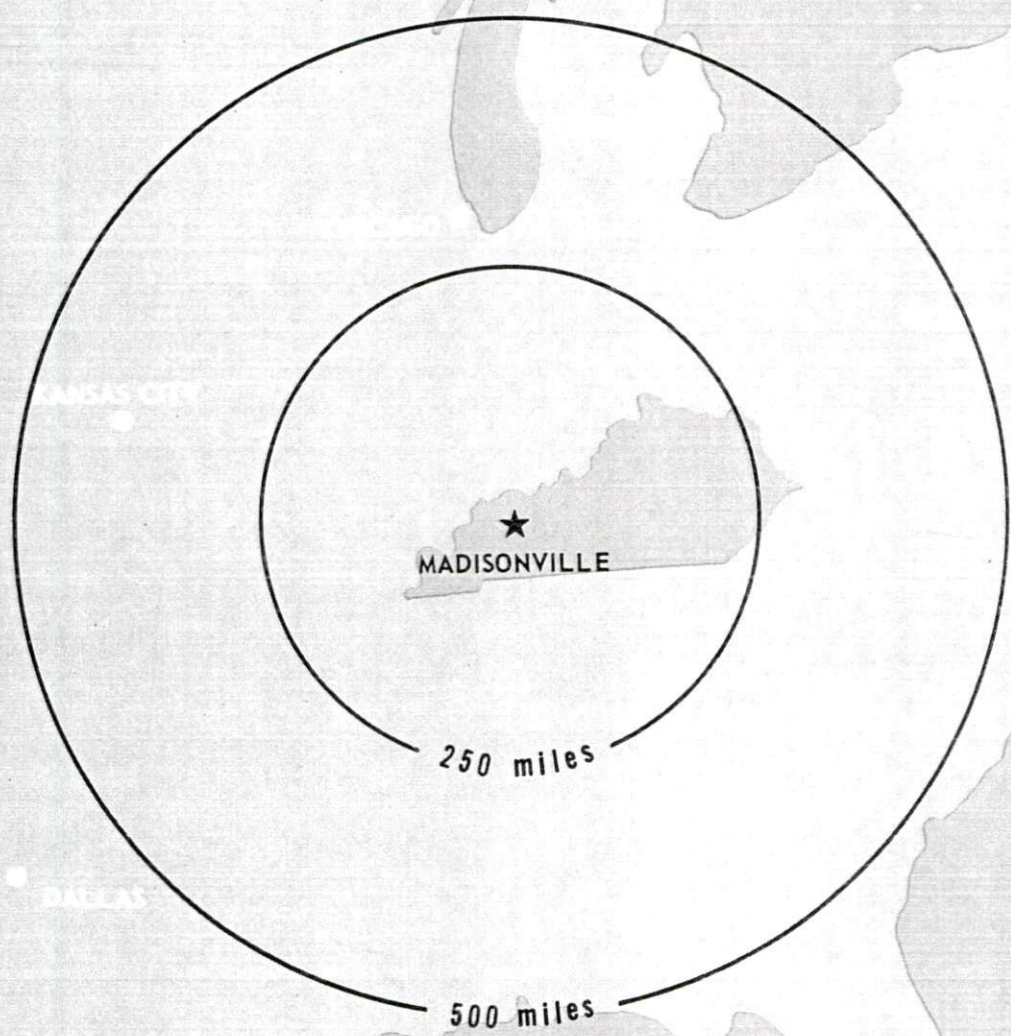
Recommended Citation

Kentucky Library Research Collections, "Industrial Resources: Hopkins County - Madisonville" (1970). *Hopkins County*. Paper 27.
https://digitalcommons.wku.edu/hopkins_cty/27

This Report is brought to you for free and open access by TopSCHOLAR®. It has been accepted for inclusion in Hopkins County by an authorized administrator of TopSCHOLAR®. For more information, please contact topscholar@wku.edu.

INDUSTRIAL RESOURCES

MADISONVILLE **KENTUCKY**



MADISONVILLE INDUSTRIAL SITES

1970

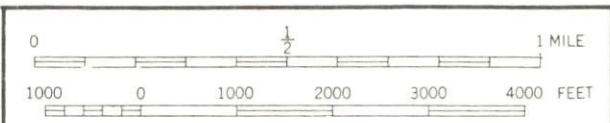


UTILITY
W - V
G - C
E - B
S - S

SITE-1
69.4 AC.
W.G.E.S.

Lake Pee wee
SPILLWAY ELEV 430

KENTUCKY



CONTOUR INTERVAL 10 FEET
BASE: USGS 7.5 MINUTE SERIES — 1963

LEGEND:
 SITES AVAILABLE
 WATER
 GAS
 ELECTRICITY
 SEWERAGE

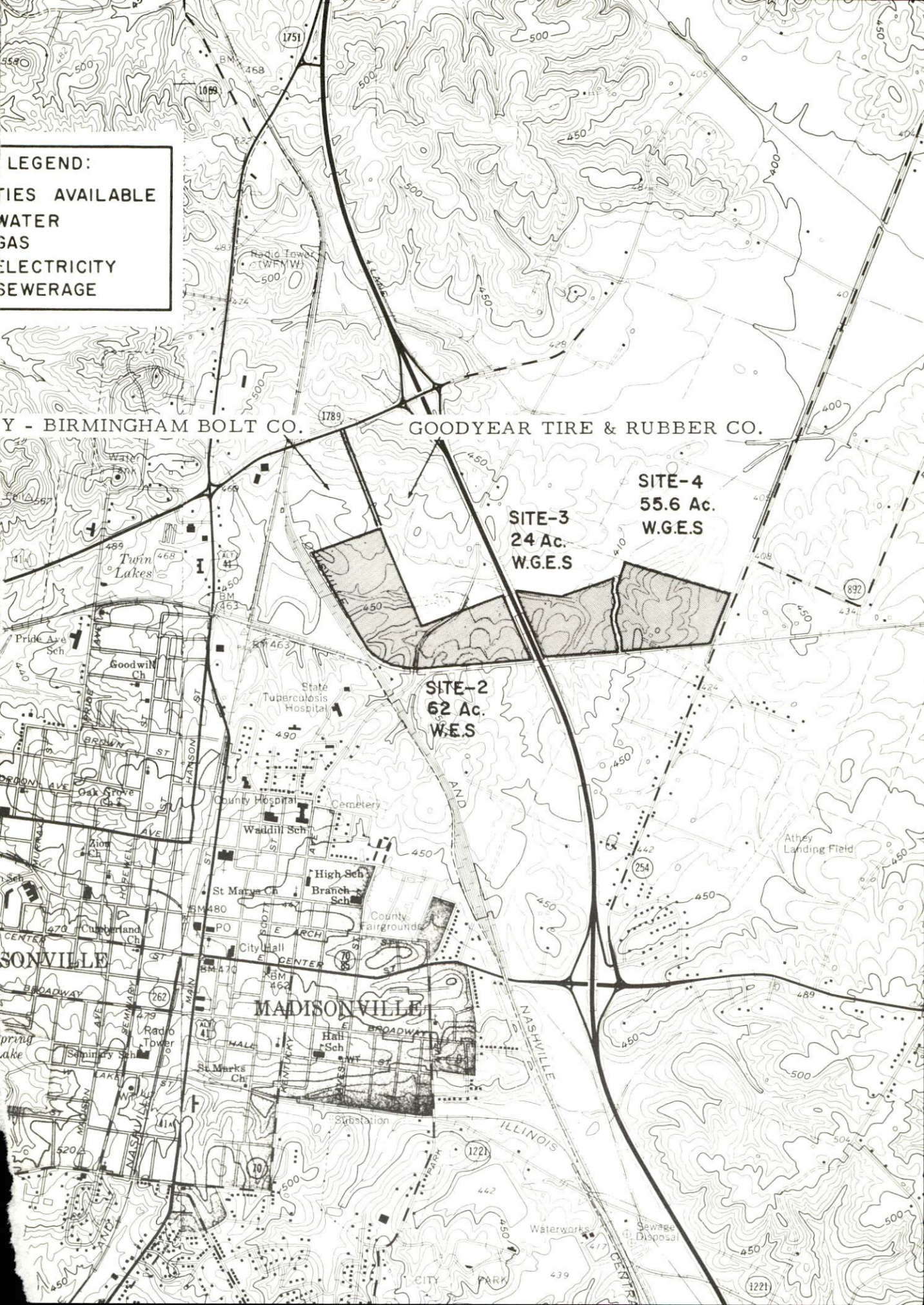
Y - BIRMINGHAM BOLT CO.

GOODYEAR TIRE & RUBBER CO.

SITE-3
 24 Ac.
 W.G.E.S

SITE-4
 55.6 Ac.
 W.G.E.S

SITE-2
 62 Ac.
 W.E.S



MADISONVILLE INDUSTRIAL SITES

For additional information concerning the following sites, contact the Madisonville Chamber of Commerce, Madisonville, Kentucky; or the Kentucky Department of Commerce, Frankfort, Kentucky.

- SITE #1: ACREAGE AND TOPOGRAPHY: 69.4 acres, gently rolling
LOCATION: Within northwest city limits
ZONING: Industrial
HIGHWAY ACCESS: U.S. 41-A approximately 800 feet from site
via paved access road
RAILROADS: Louisville & Nashville Railroad spur 800 feet from site
WATER: Madisonville Light & Water Plant
SIZE LINE: 12-inch line on site
GAS: Western Kentucky Gas Company
SIZE LINE: 16-inch line on site
ELECTRICITY: Madisonville Light & Water Plant
SEWERAGE: Madisonville Light & Water Plant
OWNERSHIP: Privately owned
- SITE #2: ACREAGE AND TOPOGRAPHY: 62 acres, level to gently rolling
LOCATION: Within northeast city limits
ZONING: Industrial
HIGHWAY ACCESS: Kentucky 1789 via paved access road just west
of Pennyriple Parkway
RAILROADS: Louisville & Nashville Railroad borders on west.
WATER: Madisonville Light & Water Plant
SIZE LINE: 12-inch line on site
GAS: Western Kentucky Gas Company
SIZE LINE: 16-inch line on site
ELECTRICITY: Madisonville Light & Water Plant
SEWERAGE: Madisonville Light & Water Plant
OWNERSHIP: Privately owned
- SITE #3: ACREAGE AND TOPOGRAPHY: 24 acres, gently rolling
LOCATION: Within northeast city limits
ZONING: Industrial
HIGHWAY ACCESS: Access road off Kentucky 254 through southern
portion of Site #3 would be extended to Site #2. Interchange to
Pennyriple Parkway is approximately 1 1/4 miles south of site.
RAILROADS: Louisville & Nashville Railroad borders on south.
WATER: Madisonville Light & Water Plant
SIZE LINE: 12-inch line 1,500 feet from site
GAS: Western Kentucky Gas Company
SIZE LINE: 16-inch line 1,500 feet from site
ELECTRICITY: Madisonville Light & Water Plant
SEWERAGE: Madisonville Light & Water Plant
OWNERSHIP: Privately owned
- SITE #4: ACREAGE AND TOPOGRAPHY: 55.6 acres, gently rolling
LOCATION: Within northeast city limits
ZONING: Industrial
HIGHWAY ACCESS: Site fronts on Kentucky 254.
RAILROADS: Louisville & Nashville Railroad through southern
portion of site
WATER: Madisonville Light & Water Plant
SIZE LINE: 12-inch line on site
GAS: Western Kentucky Gas Company
SIZE LINE: 16-inch line on site
ELECTRICITY: Madisonville Light & Water Plant
SEWERAGE: Madisonville Light & Water Plant
OWNERSHIP: Privately owned

INDUSTRIAL RESOURCES
MADISONVILLE, KENTUCKY

Prepared by
The Kentucky Department of Commerce
in cooperation with
The Madisonville Chamber of Commerce

1970

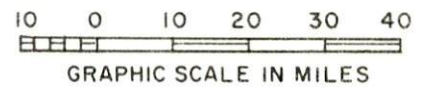
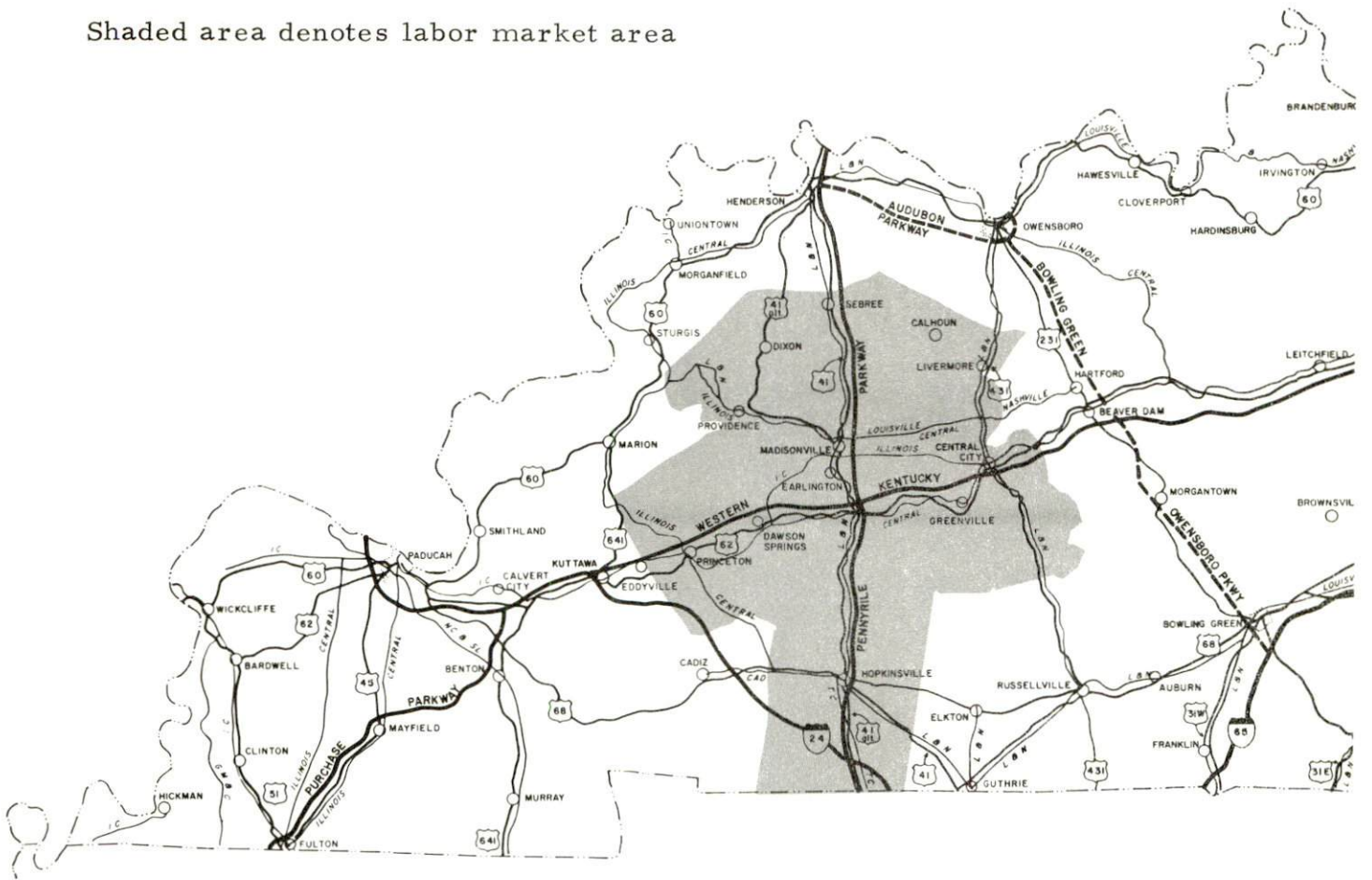
TABLE OF CONTENTS

<u>Chapter</u>	<u>Page</u>
INDUSTRIAL SITES	i
MADISONVILLE, KENTUCKY - A RESOURCE PROFILE . . .	1
THE LABOR MARKET	3
Population Trends	3
General Employment Characteristics	3
Manufacturing Employment Trends by Industry	3
Madisonville Manufacturing Firms, Their Products and Employment	4
Wage Rates for Selected Occupations	5
Labor Organizations	5
Current and Future Labor Supply	7
Total Personal Income	7
Per Capita Personal Income	7
EDUCATION	8
Public Schools	8
Vocational Schools	8
Colleges and Universities	9
TRANSPORTATION	11
Rail	11
Truck Service	11
Air	12
Bus	12
Taxi	12
Rental Services	12
POWER AND FUEL	13
Electricity	13
Natural Gas	13
WATER AND SEWERAGE	14
Water	14
Sewerage	15

<u>Chapter</u>	<u>Page</u>
LOCAL GOVERNMENT16
City16
County16
Assessed Value of Property, 196916
Local General Property Tax Rates Per \$100 of Assessed Valuation, 196916
Planning and Zoning16
Safety.17
Police17
Fire17
Rescue Service17
Sanitation17
HEALTH.18
Hospitals18
Nursing Homes.18
Public Health18
OTHER LOCAL FACILITIES.19
Communications19
Library Services.19
Religious Institutions.19
Financial Institutions.20
Hotels and Motels20
Clubs and Organizations.20
RECREATION23
Local.23
Area23
AGRICULTURE - NATURAL RESOURCES - CLIMATE24
Agriculture24
Natural Resources24
Climate.24
HISTORY25

MADISONVILLE LABOR MARKET AREA

Shaded area denotes labor market area



MADISONVILLE, KENTUCKY - A RESOURCE PROFILE

Location

Madisonville, the county seat of Hopkins County, is located in the Audubon-Pennyrile area of western Kentucky. Located on the Pennyrile Parkway, Madisonville is 50 miles south of Evansville, Indiana, and 150 miles southwest of Louisville. The 1970 population of Madisonville is 14,105 and the population of Hopkins County is 37,090.

The Economic Framework

Total employment in Hopkins County averaged 14,000 in 1969, with manufacturing providing 1,600 of these jobs. During the first nine years of the decade, manufacturing employment increased by over 180 percent. The county's major products are bedspreads, sport shirts, and composition heel and sole products.

Per capita income in the county in 1968 was \$2,325.

In the Hopkins County labor market area, which includes Hopkins and its five surrounding counties, total employment in 1969 averaged 51,600. Manufacturing provided 8,400 of these jobs, while trade and services provided 11,875 jobs. Area industrial employment is heaviest in electrical equipment and supplies and apparel industries.

Despite important industrial gains in recent years, the area still has a deficit of 6,016 manufacturing jobs when measured against the national industrial employment-population ratio. This indicates an area where the potential for additional manufacturing production is excellent.

Resources for Growth

1. There is a current estimated labor supply of 3,610 men and 5,315 women available for industrial jobs in the labor market area. In addition, 8,425 young men and 8,090 young women will become 18 years of age by 1976 and potentially available for work.

2. The local transportation capability is good. The Pennyrile Parkway, at Madisonville, links with the Western Kentucky Parkway, one of the state's major highway arteries. Rail service is provided by the Louisville & Nashville and Illinois Central Railroads. Commercial air service is available at Owensboro, 45 miles northeast of Madisonville.

3. Energy - both gas and electricity - is available in large quantity. The water supply will be more than adequate with the completion of the new 4,000,000-gpd water treatment plant in October, 1970, giving the city a total capacity of 6,000,000 gallons of treated water daily.

4. Industrial sites - Hopkins County has four available industrial sites.

5. Education - Madisonville is the home of the Madisonville Community College. The college is an integral part of the University of Kentucky with the same standards of admission and operation as apply to the parent institution. There are two senior colleges and two other community colleges within a 50-mile radius of Madisonville.

Community Programs for Improvement

Recent community improvements: a new 4,000,000-gpd water treatment plant; a shopping center; a second country club; a computer center for commercial and professional use; two new motels; three additional subdivisions; a mobile home subdivision; a new \$800,000 Allied Health Vocational School to train semi-professional medical personnel; a new office complex; airport expansion; the post office and South Central Bell Telephone Company facilities expanded; several businesses remodeled; a central laundry and purchasing facilities to serve eight hospitals; an expansion of the sewerage system; several streets repaved; new street lights; a new \$2,500,000 high school completed in 1969; several classrooms, three lunchrooms, a cafeteria, a study hall and music room added to the various schools.

Planned improvements: expansion of the Madisonville Community College, senior citizens home, shopping center, an additional 9-hole golf course for the Madisonville Country Club, new subdivisions, a new wing on the hospital, and an 800,000,000-gallon lake.

Recreation, Entertainment and Livability

Madisonville is within easy driving distance of many of Kentucky's most beautiful state parks and lakes. Kentucky Dam Village State Park, Kenlake, Lake Barkley, the Land Between the Lakes National Recreation Area, the John James Audubon State Park and Pennyrile Forest State Park are within a 100-mile radius - boating, fishing, golfing, lake or pool swimming, picnic areas, horseback riding, lodges, cabins, launching ramps and tent and trailer camp sites are available.

Madisonville has two country clubs plus the Shamrock Club which has an indoor Olympic size pool and sauna baths. Community concert series, a riding club and a little theatre group are available to the public.

THE LABOR MARKET

POPULATION TRENDS ^{1/}

Area	Population			Percent Change	
	1970	1960	1950	1960-70	1950-60
Area Total	153,860	159,825	152,450	- 3.7	+ 4.8
Madisonville	14,105	13,110	11,132	+ 7.6	+17.7
Hopkins County	37,090	38,458	38,815	- 3.6	- 0.9
Caldwell County	12,603	13,073	13,199	- 3.6	- 1.0
Christian County	55,539	56,904	42,359	- 2.4	+34.3
McLean County	8,789	9,355	10,021	- 6.1	- 6.6
Muhlenberg County	27,074	27,791	32,501	- 2.6	-14.5
Webster County	12,765	14,244	15,555	-10.4	- 8.4

GENERAL EMPLOYMENT CHARACTERISTICS, 1969 ^{2/}

Major Employment Group	Employment	
	Hopkins County	Labor Market Area
TOTAL	14,000	51,600
Agricultural	700	5,700
Nonagricultural	13,300	45,900
Manufacturing	1,600	8,400
Trade and Services	3,712	11,876
Government	2,200	8,700

MANUFACTURING EMPLOYMENT TRENDS BY INDUSTRY SEPTEMBER 1959 AND 1969 ^{3/}

Industry	Hopkins County			Labor Market Area		
	1969	1959	% Change	1969	1959	% Change
TOTAL	1,679	599	+ 180.3	9,216	4,565	+ 101.9
Food & kindred products	224	75	+ 198.7	513	549	- 6.6
Tobacco	1	2	- 50.0	37	48	- 22.9
Apparel, textiles, leather	907	348	+ 160.6	2,956	1,683	+ 75.6
Lumber & furniture	151	75	+ 101.3	962	931	+ 3.3
Printing, publishing, paper	50	45	+ 11.1	341	331	+ 3.0
Chemicals, petroleum, coal, rubber	198	2	+9800.0	433	241	+ 79.7
Stone, clay & glass	8	8	--	73	83	- 12.0
Primary metals	45	19	+ 136.8	519	19	+2631.6
Machinery & metal products	90	23	+ 291.3	3,213	678	+ 373.9
Other	5	2	+ 150.0	169	2	+8350.0

MADISONVILLE MANUFACTURING FIRMS,
THEIR PRODUCTS AND EMPLOYMENT 4/

Firm	Product	Employment		
		Total	Male	Female
A & B Signs Company	Signs	5	4	1
American Cyanamid Co.	Nitro carbo nitrates	10	10	0
American Mine Tool, Inc.	Mine bits	18		
American Printing Co.	Job printing	11	9	2
Austin Powder Co.	Blasting agents	23	18	5
Bowles Tool & Die	Fabricated metal parts	13	12	1
Coca-Cola Bottling Co.	Soft drinks	28	24	4
Dr. Pepper Bottling Co.	Soft drinks	21	21	0
The Enro Shirt Co., Inc.	Sport shirts	500	50	450
General Electric Co.	Fluorescent lamp ballasts	700 Est.	(under construction)	
General Machine, Inc.	Precision machinery	11	10	1
Goodyear Tire & Rubber Co.	Composition heel & sole products	200	154	46
Hall Printing Co.	Job printing	3	2	1
Highway Asphalt Materials, Inc.	Bituminous concrete	4	4	0
Huebsch Originators	Laundry, dry cleaning equipment parts	75		
Kentucky-Birmingham Bolt Co.	Mine roof bolts	38	36	2
Joe Leasure & Sons, Inc.	Machine shop	17	16	1
Macke Machine Works	Machine shop	13	11	2
Madisonville Concrete Co.	Ready mixed concrete	8	8	0
Madisonville Publishing Co., Inc.	Offset printing	32	16	16
Mid-America Canning Corp.	Canned soft drinks	40		
Mills Welding & Machine	Fabrication truck, shovel cabs	4	4	0
Munday Homes, Inc.	Homes, motels, portable classrooms	88	85	3
Pickard Industries, Inc.	High pressure hose assemblies	2	2	0
Ruby Concrete Co.	Concrete block, transit-mixed concrete, precast concrete	26	25	1
U. C. Milk Co., Inc.	Fluid milk, ice cream, cultured buttermilk	144	130	14
Versnick Manufacturing Co.	Cylinder sleeves, taper plugs, motor block sealer	22	20	2

(cont.)

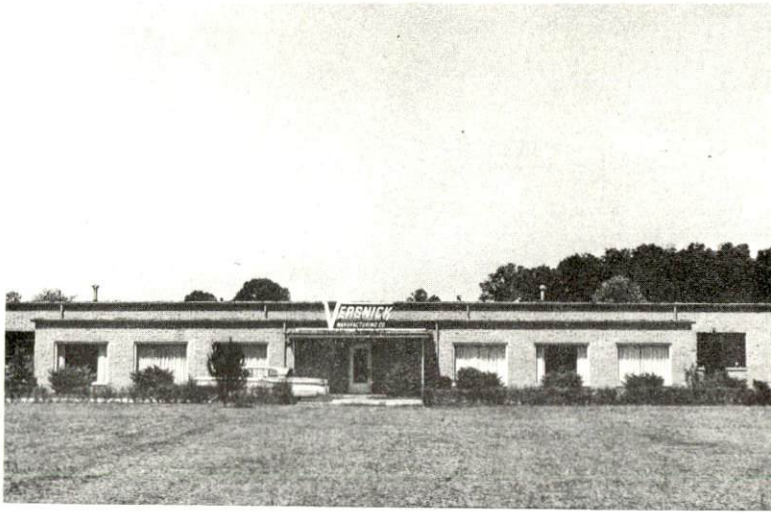
Firm	Product	Employment		
		Total	Male	Female
Wilson Electric and Metallizing Shop	Machine shop, electric motor winding	2	2	0
Wiman Packing Co.	Beef, pork and mutton	5	4	1
Win-ton, Inc.	Heat treating	3		
York Division, Borg Warner Corp.	Air conditioning systems	500 Est. (under construction)		

WAGE RATES FOR SELECTED OCCUPATIONS
MADISONVILLE, KENTUCKY ^{5/}

Classification	Wages Per Hour		
	Starting	Maximum	Prevailing
<u>Production Employees</u>			
Assembler	\$1.70	\$2.30	\$2.00
Inspector	1.70	2.65	2.25
Production Laborer	1.70	2.65	2.25
Welder, Arc or Acetylene (Class-A)	2.50	3.50	3.00
<u>Service Employees</u>			
Electrician (Class-A)	\$2.50	\$3.50	\$3.00
Laborer	1.60	2.25	2.00
Machinist	2.75	3.75	3.25
Mechanic, Maintenance	2.30	3.50	2.60
Truck Driver, Industrial (Class-A)	1.60	3.00	2.50
<u>Office Employees</u>			
Bookkeeper	\$1.65	\$2.00	\$1.80
File Clerk	1.60	2.00	1.75
Receptionist	1.60	1.95	1.75
Secretary	1.70	2.25	2.00
Typist	1.70	2.00	1.80

LABOR ORGANIZATIONS

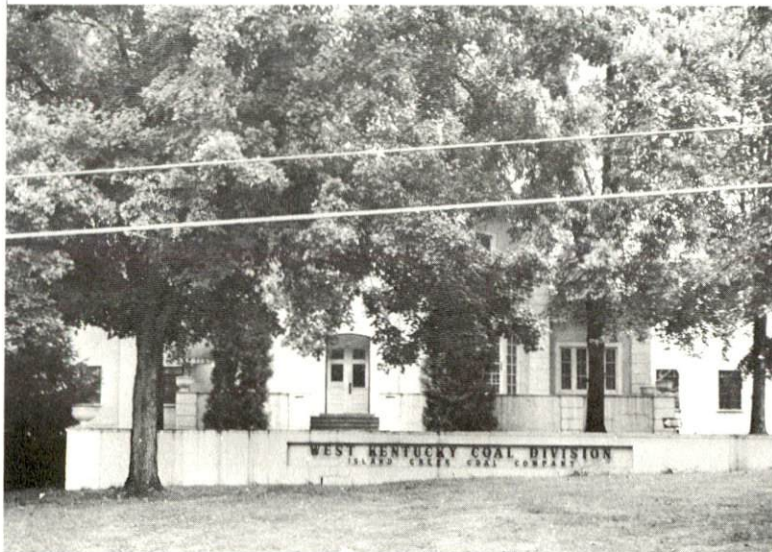
<u>Union</u>	<u>Representing Workers at:</u>
Amalgamated Clothing Workers of America	The Enro Shirt Co., Inc.
United Mine Workers of America	U. C. Milk Co., Inc.
	Versnick Manufacturing Co.
United Rubber Workers	Goodyear Tire & Rubber Co.



Versnick Manufacturing Company



Enro Shirt Company



West Kentucky Coal Company



U. C. Milk Company

CURRENT AND FUTURE LABOR SUPPLY -
MADISONVILLE LABOR MARKET AREA

<u>County</u>	<u>Current Labor Supply, 1970 ^{6/}</u>			<u>Future Labor Supply by 1976 ^{7/}</u> (Becoming 18 Years of Age)		
	<u>Total</u>	<u>Male</u>	<u>Female</u>	<u>Total</u>	<u>Male</u>	<u>Female</u>
Labor Market Area	8,930	3,612	5,318	16,520	8,428	8,092
Hopkins	2,050	799	1,251	3,874	1,966	1,908
Caldwell	793	413	380	1,181	613	568
Christian	1,695	781	914	6,493	3,327	3,166
McLean	897	362	535	906	461	445
Muhlenberg	2,134	789	1,345	2,709	1,377	1,332
Webster	1,361	468	893	1,357	684	673

TOTAL PERSONAL INCOME ^{8/}

<u>Area</u>	<u>1968</u>	<u>1959</u>	<u>% Change</u>
Hopkins County	\$ 96,597,000	\$ 61,402,000	+57.3
Labor Market Area	453,281,000	228,034,000	+98.8
Kentucky	8,516,000,000	4,655,000,000	+82.9

PER CAPITA PERSONAL INCOME ^{9/}

<u>Area</u>	<u>1968</u>	<u>1959</u>	<u>% Change</u>
Hopkins County	\$2,325	\$1,619	+ 43.6
Labor Market Area	\$1,919 to 3,805	\$1,055 to 1,619	+81.9 to +135.0
Kentucky	2,645	1,552	+ 70.4

EDUCATION

Public Schools

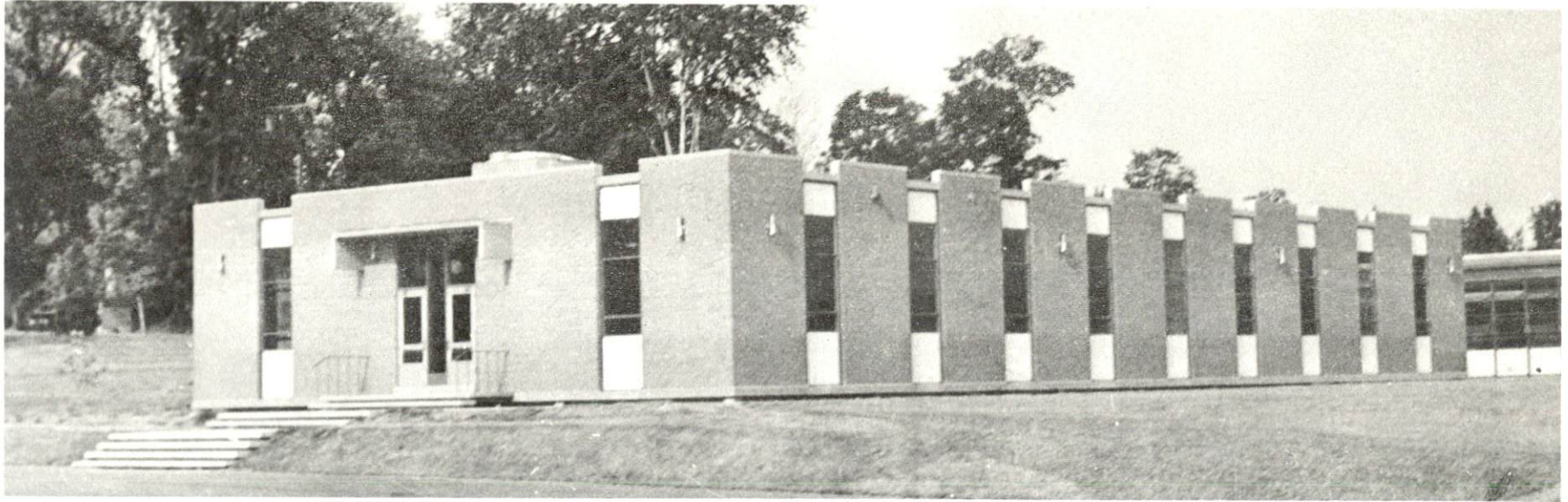
	<u>Hopkins County</u>
Total Enrollment	7,566
Elementary	5,012
Junior High	885
High School	1,669
Student-Teacher Ratio	21-1
Elementary	23-1
Junior High	22-1
High School	15-1
State Rating of High School	Provisional (3) Standard (2) Comprehensive (1) Merit (1)
Other Accreditation	Southern Association of Colleges and Schools (1)
Percent High School Graduates to College	41.6
Current Expenditures Per Pupil	\$364.80
Bonded Indebtedness, July 1, 1970	\$4,115,000

Vocational Schools

	<u>Nearest Area School</u>
Location	Madisonville
Curriculum	Practical Nursing
	Surgical Technician
	Distributive Education
	Electronics (Industrial)
	Auto Body Repair
	Auto Mechanics
	Carpentry
	Drafting
	Electricity
	Machine Shop

Colleges and Universities

<u>Name</u>	<u>Kentucky Area-Within 50 Miles</u>		<u>Highest Degree Conferred</u>
	<u>Location</u>	<u>Enrollment</u>	
Kentucky Wesleyan College	Owensboro	1, 183	Baccalaureate
Brescia College	Owensboro	1, 007	Baccalaureate
Henderson Community College	Henderson	720	Associate
Hopkinsville Community College	Hopkinsville	451	Associate
Madisonville Community College	Madisonville	203	Associate



Madisonville Community College



Madisonville Area Vocational School

TRANSPORTATION

Rail

Lines serving - Louisville & Nashville Railroad and Illinois Central Railroad

Services - Freight, siding, REA pickup and delivery

RAILWAY TRANSIT TIME FROM MADISONVILLE, KENTUCKY, TO: ^{10/}

City	No. of Days		City	No. of Days	
	CL	CL		CL	CL
Atlanta, Ga.	4		Los Angeles, Calif.	6	
Birmingham, Ala.	3		Louisville, Ky.	2	
Chicago, Ill.	3		Nashville, Tenn.	2	
Cincinnati, Ohio	3		New Orleans, La.	3	
Cleveland, Ohio	3		New York, N. Y.	5	
Detroit, Mich.	4		Pittsburgh, Pa.	4	
Knoxville, Tenn.	3		St. Louis, Mo.	3	

Truck Service

<u>Company</u>	<u>Home Office</u>
Gateway Transportation Co., Inc.	La Crosse, Wisconsin
Arnold Ligon Truck Line, Inc. (Ellis Trucking)	Indianapolis, Indiana
Majors Transit, Inc.	Caneyville, Kentucky
McLean Trucking Co.	Indianapolis, Indiana
Schroders Express, Inc.	Cincinnati, Ohio
Skaggs Transfer	Nashville, Tennessee
Tennessee Cartage Co., Inc.	Nashville, Tennessee
T. I. M. E. Freight, Inc.	Lubbock, Texas
United Parcel Service	Louisville, Kentucky

HIGHWAY MILES AND TRUCK TRANSIT TIME IN DAYS FROM
MADISONVILLE, KENTUCKY, TO SELECTED MARKET CENTERS

City	Highway Miles	Delivery		City	Highway Miles	Delivery	
		Time	TL			Time	TL
Atlanta, Ga.	367		2	Los Angeles, Calif.	2,130		5
Birmingham, Ala.	314		2	Louisville, Ky.	150		1
Chicago, Ill.	366		2	Nashville, Tenn.	110		2
Cincinnati, Ohio	309		2	New Orleans, La.	635		3
Cleveland, Ohio	526		2	New York, N. Y.	926		4
Detroit, Mich.	500		3	Pittsburgh, Pa.	600		3
Knoxville, Tenn.	294		3	St. Louis, Mo.	276		2

Air

	<u>Local</u>	<u>Nearest Commercial</u>
Location:	Madisonville Municipal Airport Madisonville	Owensboro-Daviess County Owensboro, 50 miles distant
Runways:	2 paved	2 paved
Length:	4,200 ft. ; 2,400 ft.	6,500 ft. ; 3,700 ft.
Traffic		
Control:	Wind tee and sock	Control tower
Lighting:	50-230 runway lighting, sunset to sunrise, rotating beacon	Obstruction lights and taxi lights, high intensity lighting on runway
Services:	80, 87 and 100 octane, flight training and charter - single- multi engine, major and minor repairs, auto rental	80, 91 and 100 octane, jet A fuel, Ozark Airlines, storage, major A & E repairs, general flying service and taxi

Bus

Kentucky Bus Line and Southern Greyhound Bus Line

Taxi

24-hour service

Rental Services

Two car rental companies serve Madisonville.

POWER AND FUEL

Electricity

Company serving Madisonville - Municipal Light and Water Plant
Source of power - Kentucky Utilities Company
Total generating capacity - 773,000 KW
Industrial rates negotiated by - Kentucky Utilities Company, Industrial
Development Department, Lexington, Kentucky

Company serving Hopkins County - (1) Kentucky Utilities Company,
(2) Green River RECC
Source of power - (1) Kentucky Utilities Company, (2) Big Rivers RECC
Total generating capacity - (1) 773,000 KW, (2) 400,000 KW
Industrial rates negotiated by - (1) Kentucky Utilities Company,
Industrial Development Department, Lexington, Kentucky, (2) Big
Rivers RECC, Henderson, Kentucky

Natural Gas

Company serving - Western Kentucky Gas Company
Source of supply - Texas Gas Transmission Corporation
Size of transmission lines - 12, 10, and 8 inches
Distribution lines - 6, 4, 3, and 2 inches
Btu content - 1,000
Specific gravity - .60
Distribution pressure - 20 psi

Rates - Furnished by Western Kentucky Gas Company, Madisonville
office.

WATER AND SEWERAGE

Water

Company serving Madisonville - Municipal Light and Water Plant
 Source - impoundment
 Treatment plant capacity - 2,000,000-gpd
 Average daily consumption - 2,000,000 gallons
 Peak daily consumption - 2,500,000 gallons
 Type treatment - sedimentation, filtration, coagulation, sterilization, stabilization
 Storage capacity - 3,200,000 gallons
 Average pressure - 50 psi
 Average temperature - 60°
 Size mains - 4 to 16 inches
 Remarks - A new 4,000,000-gpd water treatment plant will be in operation in October, 1970. This combined with the old plant will provide 6,000,000 gpd. Also, a new 800,000,000-gallon lake will be available as an additional source of raw water.

MONTHLY WATER RATES FOR WHOLESAL
 AND INDUSTRIAL CONSUMERS

First	3,000 gallons	\$2.80 (Minimum)
Next	7,000 gallons	.80 per 1,000 gallons
Next	10,000 gallons	.55 per 1,000 gallons
Next	30,000 gallons	.40 per 1,000 gallons
All over	50,000 gallons	.25 per 1,000 gallons

Rates outside the city limits for the City of Madisonville:

The water bill to be computed by adding 1/5 of the amount of the consumer's bill as shown on the schedule above.

Surface water sources - impoundment of small streams and mine pits
 Average discharge - Tradewater River - 325 cfs
 Expected ground water yield - northern points 5 gpm or less, southern points 50 to 200 gpm
 Yield along main streams - excellent supplies at shallow depths depending on location

Sewerage

Company serving - Municipal Light and Water Plant
Design capacity - 2,000,000-gpd
Average daily flow - 150,000 gallons
Treatment - primary and secondary
Type treatment - trickling filter
Treated effluent discharged into - Flat Creek
Size of sanitary mains - 6 to 24 inches
Size of storm mains - 18 to 48 inches

Sewerage rates are as follows:

If the amount of the monthly
water bill is:

The monthly sewer charge
shall be:

From \$ 0.00 to \$ 2.80	\$1.40
From 2.81 to 5.20	2.00
From 5.21 to 10.00	2.50
From 10.01 to 15.00	3.00
All over 15.01	4.00

LOCAL GOVERNMENT

City

Structure - Mayor - 4-year term; 6 councilmen - 2-year terms
 Total income, 1969 - \$1,099,345
 Fees and licenses - Business licenses range from \$3.75 to \$200.
 annually

County

Structure - County judge - 4-year term; 7 magistrates - 4-year terms
 Budget 1969-70 - General Fund \$466,700, Road Fund \$233,500

Assessed Value of Property, 1969

<u>Classes of Property*</u>	<u>Hopkins County</u>
Real Estate	\$154,077,827
Tangibles	45,633,869
Public Service	39,471,900

Local General Property Tax Rates Per \$100 of Assessed Valuation, 1969 ^{12/}

<u>Taxing Unit**</u>	<u>Madisonville ***</u>	<u>Hopkins County</u>
State	\$.015	\$.015
County	.157	.157
School	.671	.671
City	--	--
Total	\$.843	\$.843

Planning and Zoning

Agency - Madisonville Planning Commission
 Plans completed - Base Studies, Housing Element, Comprehensive Plan,
 Zoning Ordinance and Subdivision Regulations

*Property assessed at 100 percent of fair value.

**Manufacturing machinery, raw materials inventories and goods in process inventories are not subject to local tax. State rate is only \$0.15 per \$100.

***Madisonville operates on the income derived from the operation of the Municipal Light and Water Plant and has no property tax.

Safety

<u>Police</u>	<u>Madisonville</u>	<u>Hopkins County</u>
Total staff	24	7
Radio-patrol cars	4	4

Fire

American Insurance Association Fire Rating	6-9
Full-time staff	32
Equipment:	
1,000-gpm pumpers	3
1,500-gpm pumpers	1
750-gpm pumpers	1

Rescue Service

Hopkins County Radio Rescue Squad, Inc.
Number of volunteers - 43
Equipment - dragging equipment, rescue truck, boats, search lights and power plant
Personnel training - artificial respiration, dragging operations, radio communications, first aid

Sanitation

	<u>Madisonville</u>	<u>Hopkins County</u>
Type service	municipal	private
Cost:		
residential	free	contract
business	contract	contract
Collection frequency:		
residential	once weekly	when desired
business	when needed	when desired
Trash pickup	when needed	when desired
Disposal method	land fill	land fill

HEALTH

Hospitals

<u>General Hospital</u>	<u>Location</u>	<u>Beds</u>
Hopkinsville County Hospital	Madisonville	350

General hospital facilities - 6 operating rooms, recovery room, laboratory, X-ray, emergency room, pharmacy, O.B. section, nursery, physical therapy

Medical staff - 49 doctors, 39 registered nurses, 52 licensed practical nurses, 219 nurses aides

Other - Trover Clinic, a diagnostic clinic with 90 examination rooms; the Mid-Western Regional Mental Health Clinic; District I State Tuberculosis Hospital

Nursing Homes

	<u>Number</u>	<u>Beds</u>
Extended care homes	3	206
Personal care homes	1	148

Public Health

Facility - Hopkins County Health Department

Staff - Health officer, 1 nurse, auxiliary worker, 3 clerks, 2 sanitarians

Budget 1969-70 - \$54,257

OTHER LOCAL FACILITIES

Communications

Telephone - South Central Bell Telephone Company
Services - Standard

Telegraph - Western Union
Services - Phone and delivery

Postal - U. S. Post Office
Class - First
Mail received - twice daily
Mail dispatched - twice daily

Newspapers -
Daily and circulation - Madisonville Messenger, 10,000
Other papers received from - Louisville, Kentucky; Nashville, Tennessee;
and Evansville, Indiana

Radio - WFMW (AM and FM); WTTL (AM)
Stations received from - Owensboro and Henderson, Kentucky; and
Evansville, Indiana

Television -
Reception from - Paducah and Bowling Green, Kentucky; Nashville,
Tennessee; and Evansville, Indiana
Kentucky Educational Television - Madisonville, Channel 35

Library Services

Public libraries - Madisonville Public Library
Size collection - 24,426 volumes
Circulation, 1969 - 26,063 volumes
Services - records

Religious Institutions

Number of churches - 40
Denominations - Christian Science, Church of Christ, Church of Jesus
Christ of Latter Day Saints, Assembly of God, Baptist, Christian,
Church of God, Cumberland Presbyterian, Methodist, Presbyterian,
General Baptist, Catholic, Jehovah's Witnesses, Life Temple Church,
Light House Mission, Episcopal, Primitive Baptist, Seventh Day
Adventist, United Pentecostal

Financial Institutions

<u>Banks</u>	<u>Statement as of June 30, 1970</u>	
	<u>Assets</u>	<u>Deposits</u>
Farmers Bank and Trust Co.	\$16,201,731.84	\$14,609,090.81
The Kentucky Bank and Trust Co.	22,221,610.40	19,063,895.47
Peoples Bank and Trust Co.	12,252,618.29	11,245,525.26
<u>Savings and Loan Associations</u>	<u>Assets</u>	<u>Shared Accounts</u>
Madisonville Building and Loan Association	\$10,105,954.10	\$ 9,516,820.63
First Federal Savings and Loan Association	16,998,383.19	14,476,664.73

Hotels and Motels

<u>Number</u>	<u>Units</u>
9	402

Clubs and Organizations

Business and Civic - Chamber of Commerce, Jaycees, Kiwanis, Lions, Rotary, Civitan, Ministerial Association, Retail Merchants Association, Medical Society

Fraternal - American Legion, Eagles, IOOF, Masons, Moose, Shrine, VFW, Elks

Women's - YWCA, B and PW Club, DAR, Eastern Star, Garden Club, Cotillion, American Legion Auxiliary, VFW Auxiliary, Rotary Anns, Woman's Book Club, Post Matrons, Prosody Club, XI Gamma XI, Alpha Delta, Chautauqua Club, Women's Auxiliary

Youth - Boy Scouts, Girl Scouts, Cub Scouts, Brownies, FFA, FHA, 4-H, FTA, FAA, Beta Club, FBLA, Teen Club, Key Club



Madisonville Building and Loan Associatio



Peoples Bank and Trust Co.



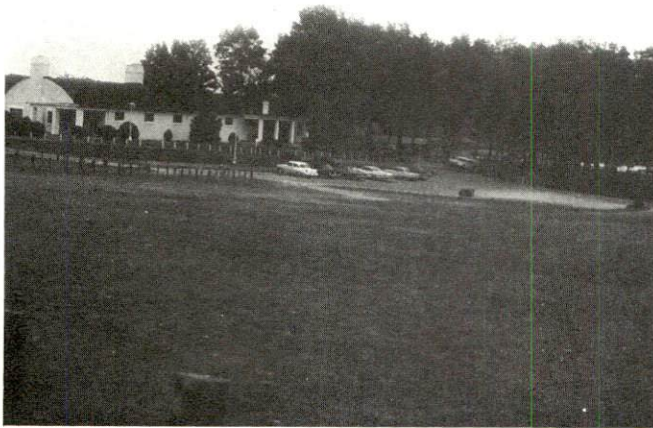
Hopkins County First Federal Savings and Loan Association



The Kentucky Bank and Trust Co.

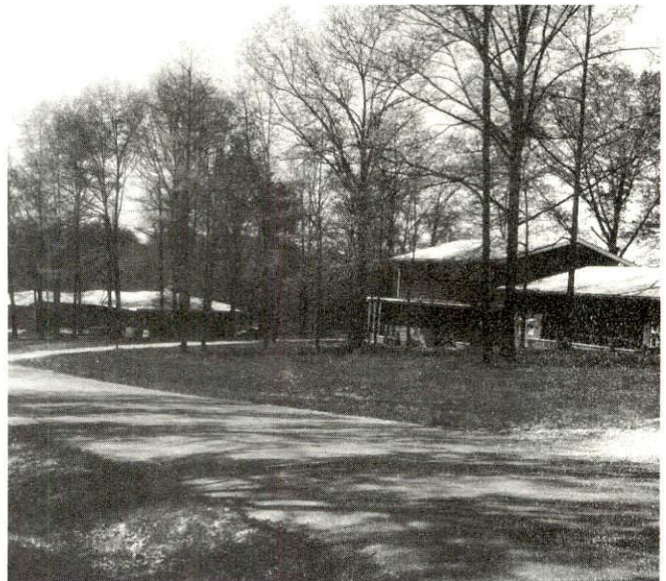


Farmers Bank & Trust Co.



Madisonville Municipal Clubhouse

Residential Section



Rizpah Temple

RECREATION

Local

Public Recreation Facilities

Supervised Program - Madisonville Recreation Department

Park - 1

Playgrounds - 7

Swimming pool - 1

Golf course - 1

Tennis courts - 2

Baseball diamonds - 4

Football field - 1

Private Recreation Facilities

Country clubs - 2

Golf courses - 2

Swimming pools - 3

Movie theaters - 1 indoor, 1 outdoor

Bowling lane - 1

Other - Gun Club, Riding Club, Shamrock Club

Cultural Events

Community concert series - local footlight players - Little Theatre

Area (Within 25 miles)

Pennyrile Forest State Park

AGRICULTURE - NATURAL RESOURCES - CLIMATE

Agriculture 13/

	<u>Hopkins County</u>	<u>Labor Market Area</u>
Total land area (acres)	353,920	1,735,680
Percent of area in farm land	53.5	63.4
Number of farms	1,071	6,327
Average size of farm (acres)	176.8	154
1964 value of all farm products	\$4,191,127	\$32,497,608
Value per farm	7,406	5,136
Total crop sales	2,339,388	17,899,463
Total livestock & livestock products:	1,486,381	14,800,931
1967 agricultural production included:		
Burley tobacco (lbs.)	283,000	8,893,000
Corn (bu.)	2,249,000	14,167,000
Cattle and calves (number)	22,000	170,000
Hogs and pigs (number)	19,700	145,000
Milk production, 1966 (lbs.)	7,085,000	47,825,000

Natural Resources

Principal mineral resources	Coal, petroleum, natural gas
Other mineral resources	Clay, glass, and sand
Acres of commercial forest land	165,600
Most abundant tree species	Red oak, white oak, hickories, sweetgum, ash, yellow poplar, soft maple

Climate 14/

	<u>Hopkins County</u>
Temperature	
Annual mean (30-year record)	57.0 degrees
Average annual 1969	54.5 degrees
Record highest (9-year record)	104.0 degrees
Record lowest (9-year record)	- 18.0 degrees
Seasonal heating degree-days (30-year record)	4,435
Precipitation	
Mean annual total (30-year record)	41.45 inches
Mean annual snow and sleet (29-year record)	12.30 inches
Total precipitation 1969	49.23 inches
Mean number days precipitation (29-year record) (.01 inch or more)	114
Average number days thunderstorms (29-year record)	47
Prevailing winds (14-year record)	south-southwest

HISTORY

Hopkins County was formed in 1806, as the forty-ninth county in the state. Its territory was taken from Henderson County. Hopkins County later gave part of its area to form Webster County. Pond River, a tributary of Green River, flows along the county's eastern border and Tradewater River drains the southwestern part. Green River, which touches the county on the extreme northeast, is navigable. These streams have always provided a natural waterway to the Ohio River.

Hopkins County was named for General Samuel Hopkins, a native of Virginia, who served in the Revolutionary War with distinction. He moved to Kentucky several years after the war, settled on Green River in Henderson County, served several terms in the State Legislature and one term in the National Congress.

Madisonville, the county seat, was named for President James Madison, and was incorporated in 1810. Daniel McGary and Solomon Silkwood donated forty acres for the town site. The site proved to be an attractive one and soon settlers were drawn to it.

Names worthy of remembrance include: William R. Weir, who served in the State House of Representatives for three consecutive terms during the formative years in the county's history; John B. Laffoon, who helped guide the state during the pre-Civil War period with outstanding work in the Lower House; and Washington Chandler, S. H. Wycliffe, and James Payne who served after the war period when political factions threatened to disrupt the state.

SOURCES OF INFORMATION

- 1/ U. S. Department of Commerce, Bureau of the Census, Census of Population, 1950, 1960, 1970 (Preliminary figure).
- 2/ Kentucky Department of Economic Security, Division of Research and Statistics.
- 3/ Kentucky Department of Economic Security, Number of Workers in Manufacturing Industries Covered by Kentucky Unemployment Insurance Law Classified by Industry and County, September 1959, September 1969.
- 4/ Kentucky Department of Commerce, Division of Research and Planning.
- 5/ Kentucky Department of Economic Security, Division of Employment Service, Madisonville Office.
- 6/ Kentucky Department of Economic Security, Kentucky Labor Supply Estimated by County, January 1970.
- 7/ Kentucky Department of Commerce, Future Labor Supply by 1976.
- 8/ University of Kentucky, Office of Development Services and Business Research, Total Personal Income for Kentucky.
- 9/ University of Kentucky, Office of Development Services and Business Research, Per Capita Income in Kentucky.
- 10/ Louisville & Nashville Railroad, Louisville, Kentucky.
- 11/ Majors Transit, Inc., Caneyville, Kentucky.
- 12/ Kentucky Department of Revenue, Kentucky Property Tax Rates, 1969.
- 13/ U. S. Department of Commerce, Bureau of the Census, Census of Agriculture, 1964. U. S. Department of Agriculture and Kentucky Department of Agriculture, Kentucky Agricultural Statistics, 1968.
- 14/ U. S. Department of Commerce, Environmental Science Services Administration, Climatological Data, 1969.

All other information was obtained from governmental offices, local businesses and organizations.