

1969

Industrial Resources: Knox County - Barbourville

Kentucky Library Research Collections
Western Kentucky University, spcol@wku.edu

Follow this and additional works at: https://digitalcommons.wku.edu/knox_cty



Part of the [Business Administration, Management, and Operations Commons](#), [Growth and Development Commons](#), and the [Infrastructure Commons](#)

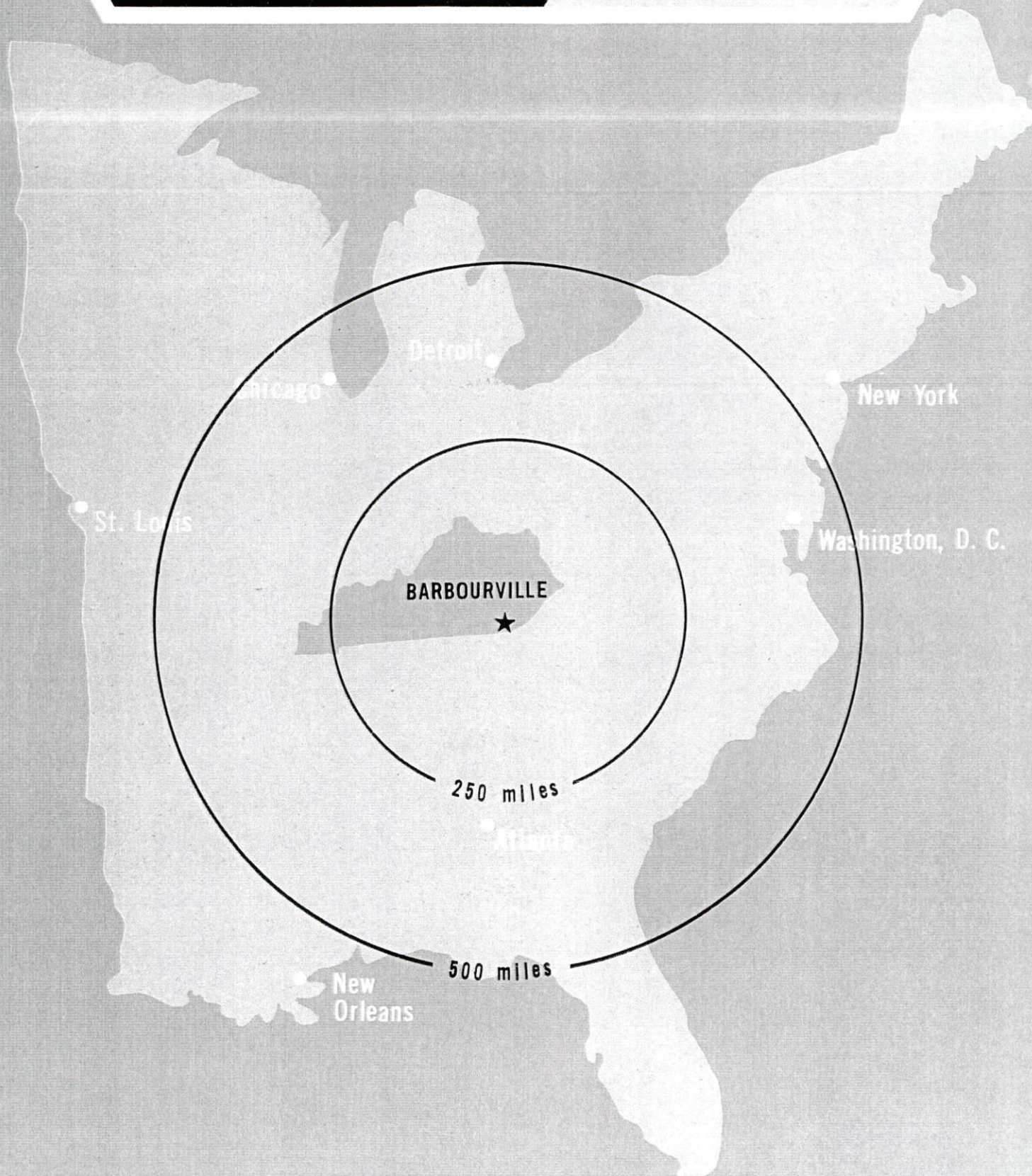
Recommended Citation

Kentucky Library Research Collections, "Industrial Resources: Knox County - Barbourville" (1969). *Knox County*. Paper 14.
https://digitalcommons.wku.edu/knox_cty/14

This Report is brought to you for free and open access by TopSCHOLAR®. It has been accepted for inclusion in Knox County by an authorized administrator of TopSCHOLAR®. For more information, please contact topscholar@wku.edu.

INDUSTRIAL RESOURCES

**BARBOURVILLE
KENTUCKY**



BARBOURVILLE INDUSTRIAL SITE

1969

BARBOURVILLE INDUSTRIAL SITE

For more detailed information concerning the following site,
contact Ben Draughn, Knox County Chamber of Commerce, Barbourville,
Kentucky, or the Kentucky Department of Commerce, Frankfort, Kentucky.

SITE #1: ACREAGE AND TOPOGRAPHY: 73 acres, level

LOCATION: 2 miles south on Kentucky Route 225

HIGHWAY ACCESS: Kentucky Route 225

RAILROADS: Louisville & Nashville Railroad Company

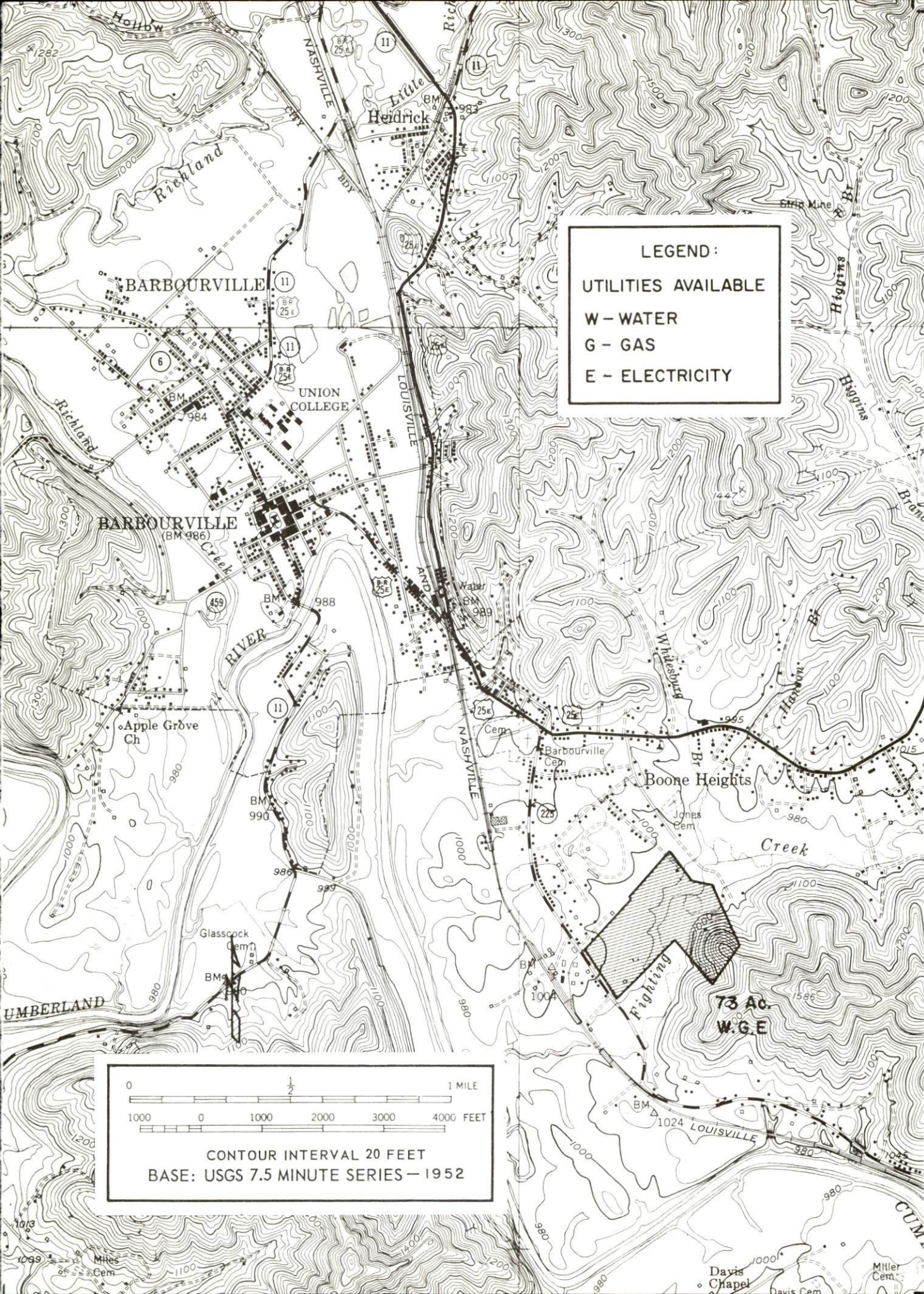
WATER: Barbourville Water and Electric Company

GAS: Knox Gas Company

ELECTRICITY: Barbourville Water and Electric Company

SEWERAGE: Not available at site

OPTIONED BY: Knoxco Improvement Company



LEGEND :

UTILITIES AVAILABLE

W - WATER

G - GAS

E - ELECTRICITY

0 1/2 1 MILE

1000 0 1000 2000 3000 4000 FEET

CONTOUR INTERVAL 20 FEET

BASE: USGS 7.5 MINUTE SERIES - 1952

73 Ac.
W.G.E.



KNOXCO IMPROVEMENT COMPANY INDUSTRIAL PARK

INDUSTRIAL RESOURCES
BARBOURVILLE, KENTUCKY

Prepared by
The Kentucky Department of Commerce
in cooperation with
The Knox County Chamber of Commerce

1969

This copy has been prepared by the Kentucky Department of Commerce,
Division of Research and Planning, and the cost of printing paid from
state funds.

TABLE OF CONTENTS

<u>Chapter</u>	<u>Page</u>
INDUSTRIAL SITES	i
BARBOURVILLE, KENTUCKY, A PROFILE.	1
THE LABOR MARKET	3
Population	3
Employment Characteristics	3
Manufacturing Characteristics	3
Labor Organizations	4
Wage Levels	5
Labor Supply	6
Income.	6
EDUCATION	7
Elementary and High Schools.	7
Vocational Schools	7
Colleges	9
TRANSPORTATION.	12
Rail.	12
Highways	12
Truck Service	12
Air	13
Other Transportation Services	13
POWER AND FUEL.	14
Electricity	14
Natural Gas	15
Coal.	15
Fuel Oil	15
WATER AND SEWERAGE	16
Water	16
Sewerage	16

<u>Chapter</u>	<u>Page</u>
AGRICULTURE-NATURAL RESOURCES-CLIMATE	17
Agriculture	17
Mineral Resources	17
Water Resources	17
Forests	18
Climate	18
LOCAL GOVERNMENT	19
Structure	19
Finance	19
Taxes	19
Planning and Zoning	21
Safety	21
Fire	21
Police	21
Sanitation	22
HEALTH	23
Hospitals	23
Nursing Homes	23
Public Health	23
OTHER LOCAL FACILITIES	24
Housing	24
Communication	24
Telephone	24
Telegraph	24
Postal	24
Newspapers	24
Radio	24
Television	24
Libraries	24
Churches	26
Financial Institutions	26
Hotels and Motels	26
Clubs and Organizations	26
Recreation	26
Community Improvements	27
HISTORY	29

BARBOURVILLE, KENTUCKY, A PROFILE

Location

Barbourville, the county seat of Knox County, is located in the historic Cumberland Gap Valley of southeastern Kentucky. Originally a western station on Daniel Boone's Wilderness Trail to the west, Barbourville still retains its pioneer heritage and cultural blend of east and west. Barbourville, on U. S. Highway 25-E and 17 miles from the north-south artery of Interstate 75, is 115 miles from Lexington, 200 miles from Louisville, and 94 miles from Knoxville, Tennessee.

The Economy

The Knox County economy is primarily affected by employment in trade and services and manufacturing. Total county employment averages 3,500 with 1,100 employed in trade and services and 1,000 in manufacturing. Employment in manufacturing has more than doubled since 1960. Government employment totals approximately 900.

Growth of the economy is reflected in the 109 percent increase in total personal income between 1959 and 1968. During the same period, per capita income in Knox County increased 129 percent.

Trade and services also ranks first in employment in the five-county Barbourville labor market area, providing jobs for 7,000. Manufacturing employment in the area totals 4,300. Employment in government totals approximately 4,200.

A healthy outlook for the future of Barbourville is maintained through a strong local leadership, good community attitudes, an ample labor supply and moderate wage rates.

Labor Supply

A current labor supply of 7,000 men and 8,300 women is available for industrial jobs in the Barbourville area.

During the next five years an additional 7,800 boys and 7,800 girls will reach the age of 18 years and augment the labor supply.

Industrial Sites and Services

Barbourville has 73 acres of level land available for industrial development. All utilities are available at the site except sewer facilities, which will be extended by the city.

Rail service is provided by the Louisville & Nashville Railroad.

Trucking service is provided by four carriers.

Commercial air service is provided by the London-Corbin War Memorial Airport, 25 miles distant.

Ample supplies of power and fuels are available. Electric power is furnished by the Kentucky Utilities Company and Cumberland Valley RECC. Natural gas is distributed by the Knox-Clay County gas fields and Columbia Gas of Kentucky.

Education

Barbourville is the home of Union College, founded in 1879. Art exhibits, concerts, and sports events are open to the public.

Recreation

A variety of recreational activities is available in and around the Barbourville area. Facilities include several city playgrounds, a twelve-lane bowling center, one indoor motion picture theater, and one outdoor theater. Located near Barbourville is a nine-hole golf course, 12 miles distant, and the Indian Springs Country Club, which has a nine-hole golf course, a private lake with cabin sites, large clubhouse, swimming pool, and dining room.

Year-round swimming facilities are available at Union College in Barbourville.

The Dr. Thomas Walker State Park is located 5 miles from the city with picnicking facilities available.

Pine Mountain State Park is 14 miles distant.

THE LABOR MARKET

Population

Knox County had an estimated population of 24,800 in 1968, a slight decline since 1960. Barbourville had a population of 3,211 in 1960.

TABLE 1

POPULATION TREND-BARBOURVILLE AND KNOX COUNTY, KENTUCKY ^{1/}

Year	Barbourville		Knox County	
	Population	% Change	Population	% Change
1900			17,372	
1950	2,926		30,409	75.0
1960	3,211	9.7	25,258	-16.9
1968 ^{2/}	NA		24,800	- 1.8

Employment Characteristics

During 1968 total employment in Knox County averaged 3,500. Major segments of employment are trade and services (1,100), manufacturing (1,000), and government (900). Agricultural employment was 430 in 1968.

The total 1968 employment in the Barbourville labor market area averaged 26,013. Major segments of employment are trade and services (7,990), manufacturing (4,028), agriculture (3,691), and government (3,047).

Manufacturing Characteristics

Apparel and lumber are the leading manufacturing activities in Barbourville, employing 396.

Manufacturing growth has increased steadily during the past six years, as seven new industries located in Knox County, representing over \$500,000 in investments.

TABLE 2

BARBOURVILLE MANUFACTURING FIRMS,
PRODUCTS AND EMPLOYMENT ^{3/}

Firm	Product	Employment		
		Total	Male	Female
Advocate Publishing Co.	Newspaper, commercial printing	7	6	1
Barbourville Kiln Drying Co., Inc.	Kiln dried lumber	14	14	0
Cumberland Charcoal Corp.	Charcoal	9	9	0
East Kentucky Steel, Inc.	Steel doors, door jams	9	9	0
Knox Concrete Products Co.	Ready mixed concrete	9	9	0
Marshall Lumber Co.	Lumber	75	75	0
Viall Lumber Co., Inc.	Hardwood lumber	60	60	0
Warner Brothers Co.	Brassieres & girdles	197	12	185
E. K. Wood Products Co.	Furniture dimension kitchen cabinet moldings	41	40	1

In the five-county Barbourville labor market area, including Knox, Bell, Clay, Laurel, and Whitley Counties, there were 4,287 employed in manufacturing in 1968. Employment in apparel increased from 261 in 1960 to 1,649 in 1968. Employment in metal products and machinery has also risen sharply.

TABLE 3

MANUFACTURING EMPLOYMENT, BARBOURVILLE LABOR
MARKET AREA ^{4/}

Industry	Employment		
	1968	1960	% Change
TOTAL	4,287	2,131	101.2
Apparel	1,649	261	531.8
Metal products and machinery	765	69	1,008.7
Lumber and furniture	916	1,038	- 11.8
Food and kindred products	651	508	28.1
Other	306	255	20.0

Labor Organizations

Knox County manufacturing firms are not unionized.

Wage Levels

The 1967 average weekly wage in all industries covered by unemployment insurance in Knox County was \$74.40, and \$69.35 for manufacturing. Comparable figures for Kentucky were: \$104.50 for all industries; \$115.08 for manufacturing.

All counties in the labor market area were below the Kentucky averages leading to a tentative conclusion that workers can be recruited for jobs in Knox County at about the minimum wage level.

Some examples of specific occupational wage rates in the Barbourville area are: 5/

<u>Production Employees</u>	<u>Wages Per Hour</u>		
	<u>Starting</u>	<u>Maximum</u>	<u>Prevailing</u>
Assembler	\$1.60	\$1.90	\$1.75
Inspector	1.65	1.80	1.65
Machinist, Set Up	2.40	3.25	2.60
Production Laborer	1.60	1.80	1.60
Punch Press Operator	1.80	2.10	1.80
Sprayer or Painter	1.60	1.90	1.60
Sewing Machine Operator	1.60	1.70	1.60
<u>Service Employees</u>			
Carpenter	\$2.00	\$4.25	\$3.00
Electrician	2.25	4.25	3.25
Janitor	1.60	2.00	1.60
Laborer	1.60	2.10	1.70
Machinist	2.00	3.20	2.40
Mechanic, Maintenance	2.25	3.25	2.50
Shipping Clerk	1.70	2.20	1.90
Truck Driver	1.60	2.50	1.70
Tool, Die, or Gauge Maker	3.00	4.25	3.00
Welder, Acetylene, Carbon and Arc	2.00	4.00	2.25
<u>Office Employees</u>			
Bookkeeper or Accounting Clerk	\$1.60	\$3.00	\$2.00
Chief Clerk	1.75	2.50	2.00
Draftsman	1.85	3.00	2.00
File Clerk	1.60	1.75	1.60
Key Punch Operator	1.60	1.75	1.60

<u>Office Employees</u>	<u>Wages Per Hour</u>		
	<u>Starting</u>	<u>Maximum</u>	<u>Prevailing</u>
Receptionist	\$1. 60	\$2. 00	\$1. 60
Secretary	1. 60	2. 00	1. 75
Stenographer	1. 60	2. 00	1. 60
Tabulating Machine Operator	1. 60	1. 75	1. 60
Telephone Operator	1. 60	1. 90	1. 65
Typist	1. 60	1. 80	1. 60

Labor Supply

Currently, there are 7,000 men and 8,300 women available for industrial jobs in the Barbourville area. The current labor supply includes the unemployed, underemployed, and persons who would enter the labor force if jobs became available. During the next five years an additional 7,699 boys and 7,546 girls will reach the age of 18 years and augment the labor supply.

Workers could be expected to commute to Barbourville from Bell, Clay, Laurel, and Whitley Counties in response to job opportunities.

TABLE 4

CURRENT AND FUTURE LABOR SUPPLY - BARBOURVILLE LABOR MARKET AREA 6/

	<u>Current Labor Supply</u>			<u>Future Labor Supply by 1975</u>		
	July, 1968			(Becoming 18 Years of Age)		
	Total	Male	Female	Total	Male	Female
Labor Market						
Area	15,300	7,000	8,300	15,245	7,699	7,546
Knox	3,400	1,800	1,600	2,863	1,408	1,455
Bell	3,800	1,600	2,200	4,089	2,085	2,004
Clay	3,000	1,500	1,500	2,804	1,429	1,375
Laurel	2,800	1,100	1,700	2,829	1,434	1,395
Whitley	2,300	1,000	1,300	2,660	1,343	1,317

Income

The total personal income in Knox County in 1968 was estimated at \$26,641,000. Per capita income was \$1,074 for a gain of \$604 since 1960. 7/

EDUCATION

The educational system in the Barbourville area has the facilities to produce an effective labor force for future industrial growth.

Elementary and High Schools

The Barbourville Independent School District consists of one elementary and one high school. Thirty-one professional and five nonprofessional people are employed. A guidance counselor and two remedial reading teachers serve on the staff. Installation of educational TV receivers in all rooms has been completed recently. The budget for the year ending June 30, 1969, is \$285,000.

The Knox County School System consists of 2 high schools and 21 elementary schools. Two hundred forty-four certified and one hundred sixty-four nonprofessional people are employed. Three guidance counselors, one remedial reading teacher, one homebound teacher, and one hearing therapist are on the staff. The budget for 1968-69 is \$2,625,259. One new elementary school is under construction and will be completed in 1970. Two new elementary schools were completed in 1968.

TABLE 5

SCHOOLS, ENROLLMENT, NUMBER OF TEACHERS, STUDENT-TEACHER RATIO IN BARBOURVILLE AND KNOX COUNTY, 1968-69 ^{8/}

School	Enrollment	No. of Teachers	Student-Teacher Ratio
Barbourville Elementary	310	13	23-1
Barbourville High School	242	14	17-1
Knox Elementaries (total)	3,956	145	27-1
Knox High Schools (total)	1,380	63	21-1
Parochial	23	2	11-1

Vocational Schools

An extension center of the Harlan Area Vocational-Technical School is located in Barbourville. Course offerings include standard training in carpentry, drafting, electricity, welding, auto mechanics, and appliance repair.



BOONE ELEMENTARY SCHOOL



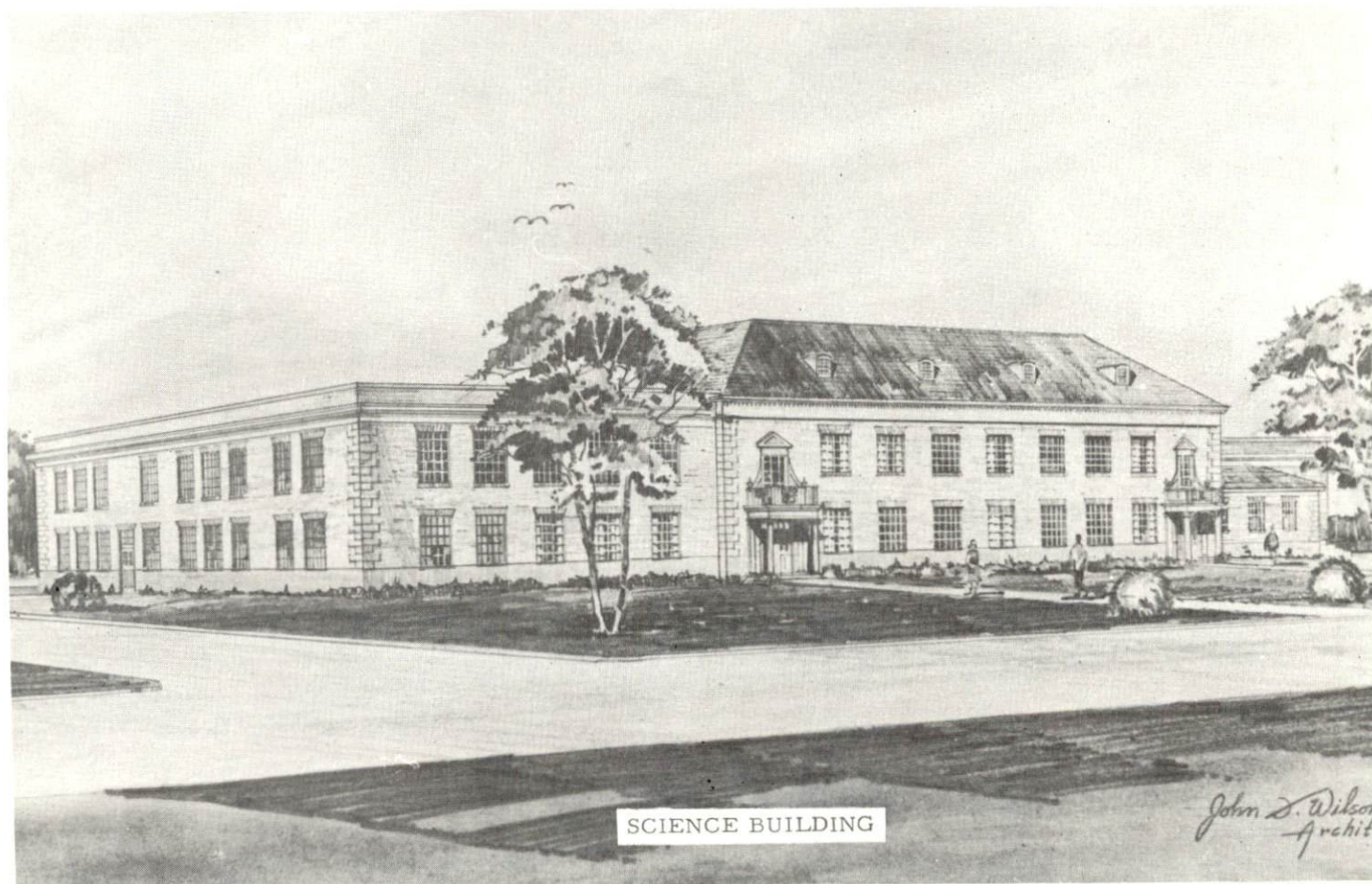
KNOX CENTRAL HIGH SCHOOL

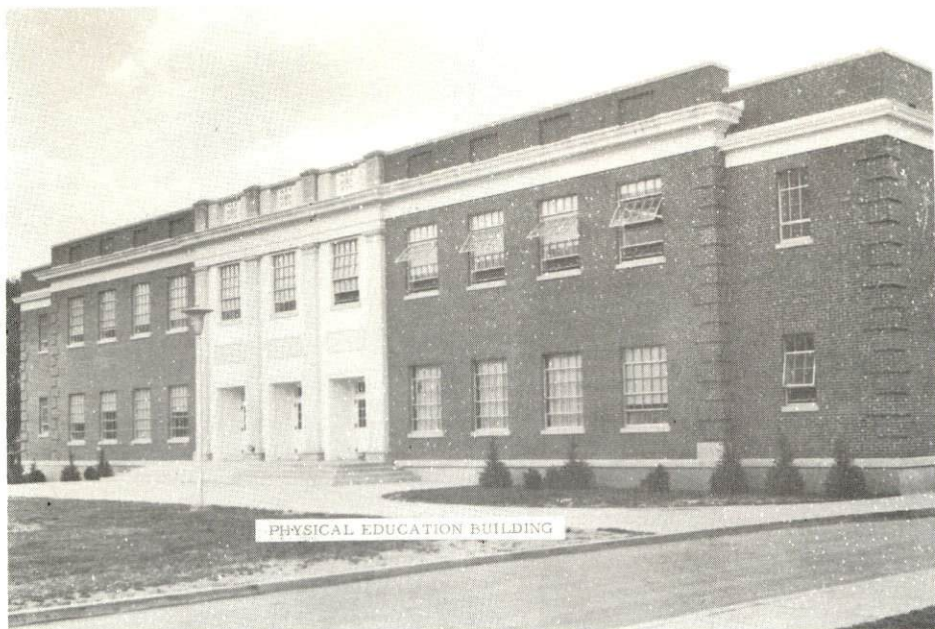
Colleges

Union College, located in Barbourville, was founded in 1879. It is a coeducational liberal arts institution with a current enrollment of 921 students. Baccalaureate degrees in arts and sciences, music, and education are offered. In addition the graduate school offers a curriculum leading to the degree of Master of Arts in Education. A long-range development program adopted in 1966 envisions \$8,000,000 in expansions and operational needs to be completed by 1979.

Other institutions of higher learning in the Barbourville area include:

<u>College or University</u>	<u>Location</u>	<u>Distance</u>
Sue Bennett Junior College	London, Kentucky	31 miles
Cumberland College	Williamsburg, Kentucky	36 miles
Berea College	Berea, Kentucky	79 miles
Eastern Kentucky University	Richmond, Kentucky	93 miles
Centre College	Danville, Kentucky	95 miles
Southeast Community College (University of Kentucky)	Cumberland, Kentucky	72 miles





PHYSICAL EDUCATION BUILDING



BOWLING CENTER, UNION COLLEGE



STUDENT CENTER

TRANSPORTATION

Rail

The Louisville & Nashville Railroad Company provides Barbourville with freight service including package car service. Switching service is provided daily, except Sundays. Siding will accommodate twenty cars. Outbound carloads average 150 to 200 per month. There is an average of 100 inbound carloads per month. Passenger service is not available. Piggyback facilities are available at Richmond, Kentucky, approximately 77 miles away.

REA Express provides pickup and delivery service from the station twice a week.

TABLE 6

RAILWAY TRANSIT TIME FROM BARBOURVILLE, KENTUCKY, TO: 9/

City	No. of Days		City	No. of Days	
	CL			CL	
Atlanta, Ga.	2		Los Angeles, Calif.	6	
Birmingham, Ala.	2		Louisville, Ky.	1	
Chicago, Ill.	3		Nashville, Tenn.	2	
Cincinnati, Ohio	2		New Orleans, La.	3	
Cleveland, Ohio	3		New York, N. Y.	4	
Detroit, Mich.	4		Pittsburgh, Pa.	4	
Knoxville, Tenn.	1		St. Louis, Mo.	2	

Highways

Barbourville is 17 miles east of I-75. All segments of this north-south route through Kentucky will be completed in 1969. This will greatly improve highway transportation in the Barbourville area and will serve as a link to all the major markets of the nation. U.S. Highway 25-E and Kentucky Routes 6, 11, 225, and 229 also serve the area.

Truck Service: Barbourville is served by four truck lines.

Company

Dance Freight Lines, Inc.
(Consolidated Freightways)
Mason & Dixon Lines, Inc.
McDuffee Motor Freight
(Ellis Trucking)
McLean Trucking Co.

Home Office

Lexington, Kentucky
Kingsport, Tennessee

Lebanon, Kentucky
Winston-Salem, North Carolina

TABLE 7

HIGHWAY MILES AND TRUCK TRANSIT TIME FROM
BARBOURVILLE, KENTUCKY, TO SELECTED MARKET CENTERS 10/

City	Delivery			City	Delivery		
	Highway Miles	Time (Days)			Highway Miles	Time (Days)	
		LTL	TL			LTL	TL
Atlanta, Ga.	290	3	2	Los Angeles, Calif.	2,216	7	5
Birmingham, Ala.	356	3	2	Louisville, Ky.	200	3	2
Chicago, Ill.	493	4	2	Nashville, Tenn.	225	3	2
Cincinnati, Ohio	203	3	2	New Orleans, La.	917	5	3
Cleveland, Ohio	447	5	3	New York, N. Y.	828	4	2
Detroit, Mich.	388	5	3	Pittsburgh, Pa.	485	5	3
Knoxville, Tenn.	94	3	2	St. Louis, Mo.	460	5	3

Air

Barbourville is served by the London-Corbin War Memorial Airport, approximately 25 miles distant. Commercial service is provided by Piedmont Airlines with six flights daily. The runway was recently extended to 6,000 feet in length and 150 feet in width. It is equipped for night operation. Charter and private flying service and car rental service is available.

A private airstrip is located near Corbin, 17 miles away.

Other Transportation Services

Southern Greyhound Bus Lines serves Barbourville with 5 northbound and 5 southbound buses daily.

Taxi service is available 24 hours a day.

POWER AND FUEL

Electricity

The municipally-owned Barbourville Water & Electric Company furnishes electricity to 2,498 city customers. The Company's source of supply is the Kentucky Utilities Company, which has a generating capacity of approximately 740,000 KW in its six generating stations which are located in southeastern, central, and western Kentucky. Additional generating capacity of 427,000 KW is under construction with completion scheduled for May, 1971. The Company also has major interconnections with nine neighboring utilities which provide a means of interchanging substantial blocks of electricity when desired. Industrial rates will be furnished upon request from the Kentucky Utilities Company, Lexington, Kentucky, or the Kentucky Department of Commerce, Frankfort, Kentucky.

Electric Power Rates (Rate LP) - Barbourville Water & Electric Company

Maximum Load Charge

\$1.75 per kilowatt for the first 25 kilowatts of the maximum load in the month, but not less than \$8.75 per month.

\$1.50 per kilowatt for all in excess of 25 kilowatts per month.

Plus and Energy Charge

2.5 cents per kwh for the first	1,000 kwh used per month
1.5 cents per kwh for the next	9,000 kwh used per month
1.0 cent per kwh for the next	40,000 kwh used per month
.9 cent per kwh for the next	50,000 kwh used per month
.8 cent per kwh for the next	400,000 kwh used per month
.7 cent per kwh for all in excess of	500,000 kwh used per month

Portions of Knox County are served by the Cumberland Valley RECC which provides electric service to 2,836 Knox County consumers. Its source of supply is the East Kentucky RECC, a generation and transmission cooperative which transmits low-cost, wholesale power to its eighteen member rural electrics. Rates for industry will be furnished by the Cumberland Valley RECC, Gray, Kentucky; East Kentucky RECC, Winchester, Kentucky; or the Kentucky Department of Commerce, Frankfort, Kentucky.

Natural Gas

Barbourville is served by the Peoples Gas Company, whose sources of supply are the Knox-Clay County gas fields and Columbia Gas of Kentucky. The Company serves 1,048 customers in the immediate vicinity of Barbourville.

Peoples Gas Company Rates:

First	2,000 per MCF	\$2.60 (Minimum)
Next	4,000 per MCF	1.04 per MCF
Next	44,000 per MCF	.93 per MCF
Next	350,000 per MCF	.86 per MCF
All over	400,000 per MCF	.78 per MCF

The suburbs of Barbourville are served by a retail natural gas distributor operating as Knox Gas Company. Its source of supply is the Kentucky Gas Transmission Company. Presently, 1,136 customers are served. Rates are:

Knox Gas Company - Suburb:

First	2,000 per MCF	\$2.06 (Minimum)
Next	4,000 per MCF	.64 per MCF
Next	12,000 per MCF	.54 per MCF
Next	30,000 per MCF	.48 per MCF
All over	48,000 per MCF	.44 per MCF

Coal

Barbourville is served by the Eastern Kentucky Coal Field. A representative freight cost for industrial and domestic coal can be determined below: 11/

<u>Point of Origin</u>	<u>Freight Delivery Cost (Net Ton)</u>
Jellico-Middlesboro	\$2.84
Harlan	2.52

Fuel Oil

Kentucky has three fuel oil refineries located in Catlettsburg, Louisville, and Somerset. Kentucky's fuel supply is supplemented by border state operations.

Delivery prices of the various grades may be obtained from the Kentucky Department of Commerce.

WATER AND SEWERAGE

Water

The Barbourville Water & Electric Company, whose source of raw water is the Cumberland River, supplies the city with treated water. The treatment capacity of the plant is 750,000 gpd and average daily use is 350,000 gallons. The maximum daily use has been 375,000 gallons. Equipment being added in 1969 will increase the daily treatment capacity to 1,100,000 gallons. Water is distributed through 6-, 8-, and 10-inch lines and average pressure is maintained at 80 psi. Storage facilities consist of two tanks, with capacities of 160,000 gallons and 250,000 gallons. Water receives complete treatment.

Rates are:

First	1,500 Gallons	\$2.50 (Minimum)
Next	50,000 Gallons	.80 per M Gallons
Next	23,500 Gallons	.70 per M Gallons
Next	25,000 Gallons	.60 per M Gallons
Next	100,000 Gallons	.50 per M Gallons
Next	100,000 Gallons	.40 per M Gallons
All over	300,000 Gallons	.30 per M Gallons

The East Knox Water District was completed in 1967 and serves 650 customers.

Sewerage

Sewage receives primary treatment which consists of a clarifier, digester, and sludge drying beds. The design population is 5,000 with a design flow of 500,000 gpd. The surplus capacity of the system is 2,000 population or 200,000 gallons. Sanitary sewers are 8, 10, 12, and 15 inches. Separate 15- and 24-inch storm sewers are maintained. The treated effluent is emptied into the Cumberland River. There is no sewerage charge.

AGRICULTURE-NATURAL RESOURCES-CLIMATE

Agriculture

The approximate total land area of Knox County is 238,720 acres, with 36 percent of the area devoted to farm land. In 1964, there were 968 farms in the county with an average size of 89 acres.

Farm income in the county is largely from the production of burley tobacco, supplemented by cattle and hogs. The 1964 value of sales of all farm products totaled \$973,478, averaging \$1,006 per farm. Crop sales totaled \$628,415; livestock and livestock products totaled \$344,797.

In 1966, agricultural production in Knox County included 942,000 pounds of burley tobacco and 162,000 bushels of corn. Livestock on farms on January 1, 1967, included 5,400 cattle and calves and 2,500 hogs and pigs. Milk cows on farms during 1965 averaged 2,000 head, with milk production for the year totaling 8.7 million pounds.

Mineral Resources

The principal mineral resources of Knox County consist of coal, petroleum and natural gas, clay and clay shales, gravel, and sandstone.

Bituminous coal is the most important mineral resource of Knox County. Lesser amounts of cannel coal are also present.

In 1967, coal was produced by 60 underground mines, 2 strip mines, and 2 auger mines, all served by trucks. During 1967, a total of 195,906 tons was mined in the county.

Production of oil in Knox County has been less important than the production of natural gas; only 1,704 barrels were produced in 1967. The major production of natural gas in the Knox County area is from the Indian Creek Fields which comes from the Mississippian "Big Lime" at depths from 1,450 to 1,500 feet.

Water Resources

The Cumberland River affords the best source of surface water supply, although other supplies may be secured by local impoundments of small streams.

Drilled wells penetrating the thick Lee Formation may yield enough water for small municipal or industrial supplies. Some wells will yield as much as 50 gallons per minute in the Eastern Kentucky Coal Field.

Forests

There are 177,600 acres of commercial forest land in Knox County, covering 74.4 percent of the total land area. The most abundant species are red oaks, white oaks, yellow poplar, hickories, yellow pines, soft maple and beech.

In Kentucky, within a 50-mile radius of Barbourville, the county seat, there are 2.7 million acres of commercial forest land. In 1962, 112 million board feet of timber were harvested from this area. Forestry authorities agree that the desirable annual cut should be much larger. The adjacent parts of Tennessee and Virginia are also well forested. While some of the timber harvest is used locally, much of it is shipped out of the area for further processing.

Forests of the entire area receive organized protection from fire from the State Department of Natural Resources.

Climate

Barbourville has an attractive year-round climate. The average temperature in the winter months is 31°, for the spring and fall months in the middle 60's and for the summer months 85°.

Winter is short - snowfall is light and rarely lasts longer than a few days.

Rainfall is heaviest in the spring months. The average yearly precipitation is 47.79 inches. In an average year about 157 days are cloudy, 109 days partly cloudy and 99 days clear.

The prevailing wind is from the northeast and an average year has 30 days of fog.

LOCAL GOVERNMENT

Structure

Barbourville, a fourth-class city, is governed by a mayor elected for a term of four years and six councilmen who are elected for two-year terms.

Knox County is governed by a fiscal court composed of a county judge elected for a four-year term and eight magistrates elected by districts for four-year terms.

Finance

The City of Barbourville had an income of \$156,888 for the twelve months ending December 31, 1968, while expenditures totaled \$137,439. Bonded indebtedness for the city as of December 31, 1968, was \$177,000 for flood wall construction. Bonded indebtedness of the city school district as of January 1, 1969, was \$77,000.

Knox County's estimated budget for the fiscal year ending June 30, 1969, is \$208,095. Bonded indebtedness in 1968 was \$215,000. Bonded indebtedness for the county school system as of June 30, 1968, was \$1,074,000.

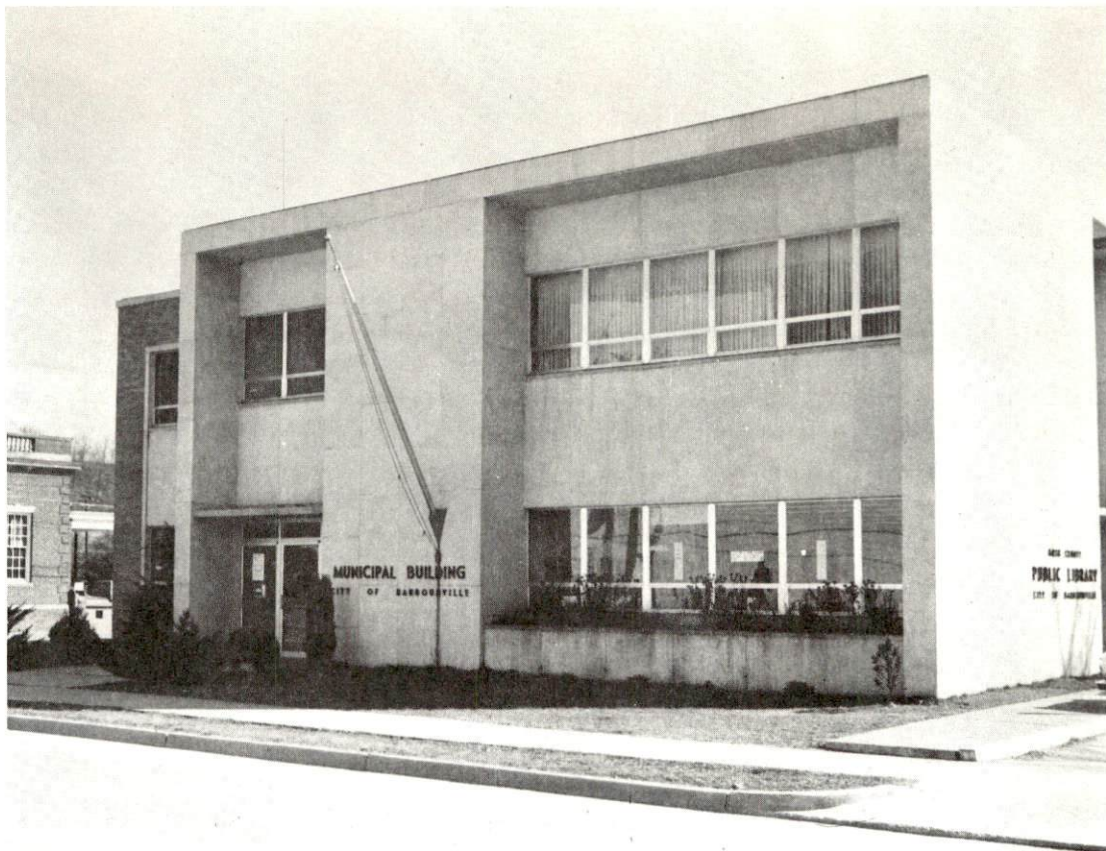
Taxes

Property taxes are a major source of income for Barbourville and Knox County. Property must be assessed at 100 percent of fair cash value under provisions of the Kentucky Constitution. Net assessed value of property in 1968 in these jurisdictions was:

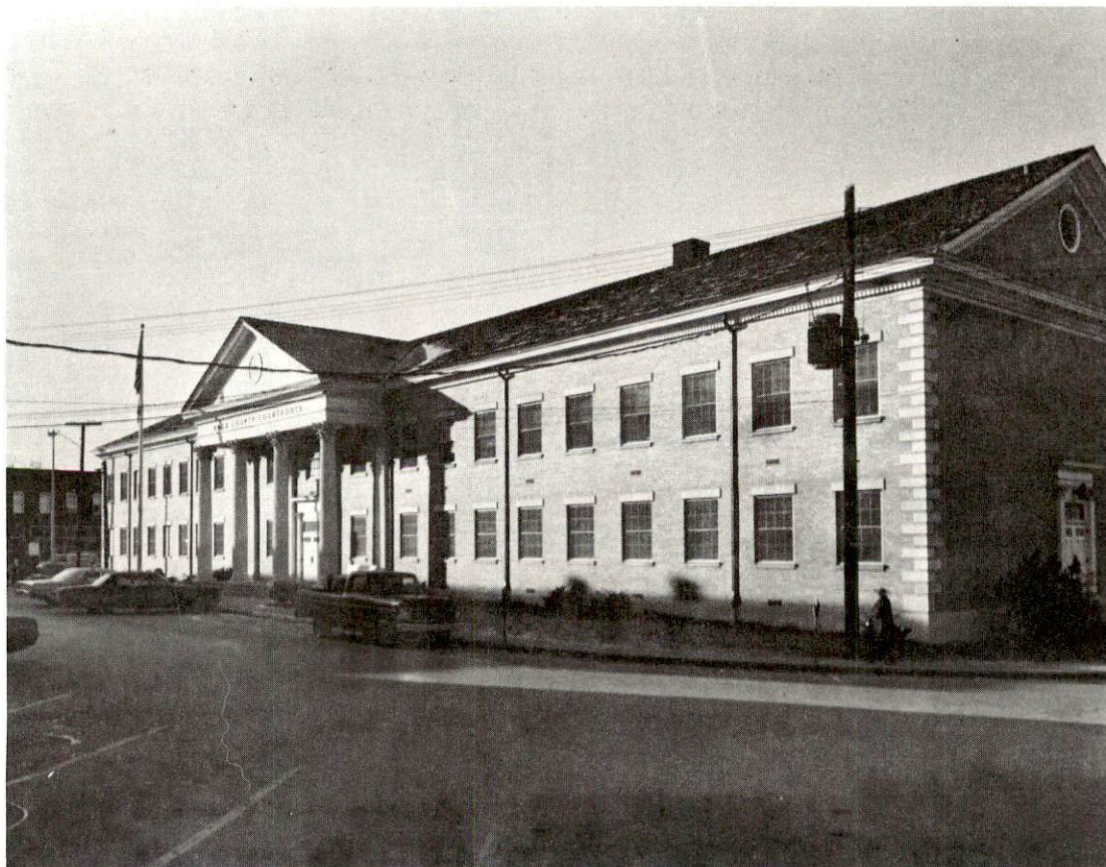
<u>Classes of Property</u>	<u>Barbourville</u>	<u>Knox County</u>
Real Estate	\$8,273,455	\$35,524,907
Tangibles	2,217,791	9,845,873
Public Service*	767,384	8,484,707

Property tax rates for Barbourville and Knox County are shown on the following page.

*1968 estimate



BARBOURVILLE MUNICIPAL BUILDING



KNOX COUNTY COURTHOUSE

TABLE 8

PROPERTY TAX RATES PER \$100 OF ASSESSED VALUE FOR
BARBOURVILLE AND KNOX COUNTY, 1968 ^{12/}

Taxing Unit	Barbourville	Knox County
State	\$.015	\$.015
County	.298	.298
School	.648	.435
City	<u>.350</u>	<u></u>
Total	\$1.311	\$.748

Business licenses are not required in Barbourville. However, there is a special annual tax of \$20.50 on large trucks, \$10.50 on small trucks and \$4 on passenger cars.

As provided by state law, Barbourville may allow a five-year exemption from municipal taxation to new industry. This exemption cannot be extended beyond this five-year period.

Planning and Zoning

The Barbourville Planning Commission, formed in 1958, has completed a Comprehensive Plan, Subdivision Regulations, Zoning Ordinance, Public Improvements Program and Commercial Areas Study. The Commission is presently updating the Comprehensive Plan.

The city has adopted and enforces all major codes and ordinances. Sixty-six units of low-cost public housing have been completed and the 75 units presently under construction are due for completion by Fall, 1969.

Safety

Fire: The Barbourville Fire Department consists of a full-time chief and 17 volunteers. Equipment includes a 1968 emergency truck, two 500-gpm pumper trucks, foam equipment and a portable pump. The station has a full-time radio operator and each fireman has a radio-equipped car.

Police: The Barbourville Police Force consists of a police chief, one assistant police chief, two patrolmen, one meterman and one radio dispatcher. Two radio-equipped cruisers are used.

The Knox County Sheriff's office staff is comprised of a sheriff, a chief deputy and twelve regular deputies. Three patrol cars are used.

Sanitation

Garbage collection service is provided by both city and private collectors. The city provides free service in the residential sections. Business establishments make independent arrangements. Collections are daily for businesses and twice weekly in the residential areas.

HEALTH

Hospitals

The Knox County General Hospital is located in Barbourville. It is a completely modern and fully-equipped hospital with air-conditioning throughout. There is a total of 55 beds and 10 bassinets. It is staffed with 5 doctors, 6 registered nurses, 10 licensed practical nurses, radiologist, anesthetist, dietician and 7 lab technicians.

Nursing Homes

There are no nursing homes in Barbourville; however, the hospital maintains a convalescent section.

Public Health

The Knox County Health Department, located in Barbourville, has a full-time staff of two nurses, two clerks, and one sanitarian. A physician provides part-time services to the Department. The major programs of the health department include communicable disease control, chronic disease control, maternal and child health, program for the physically handicapped, mental health, crippled children's services, and sanitation service. The 1968-69 budget is \$43,229.

A speech and hearing therapy center is operated in conjunction with the local health department. This center was established to serve Knox County and the surrounding 18 counties.

OTHER LOCAL FACILITIES

Housing

There are approximately 10 or 15 houses for sale and between 15 and 20 for rent in Barbourville. The construction cost of an average three-bedroom house without a basement is \$12,000 to \$15,000, and \$14,000 to \$17,000 with basement. The rental range for a two- or three-bedroom house is from \$60 to \$100 per month. Three new subdivisions were recently completed.

Communication

Telephone: The Kentucky Telephone Company serves 2,758 subscribers in Barbourville. Direct distance dialing is available.

Telegraph: The Western Union Office, located on Knox Street, is open 9 hours a day, Monday through Saturday, and 4 hours on Sunday.

Postal: Barbourville is served by a first-class post office with 16 employees. Mail is received once in the morning and dispatched twice in the afternoon. This office serves as an intermediary office for 28 offices in the area. Postal receipts for 1968 were \$83,791.

Newspapers: The Barbourville Mountain Advocate is published weekly and has a circulation of 3,000. Daily newspapers are received from Louisville, Lexington, and Corbin, Kentucky, and Knoxville, Tennessee.

Radio: Barbourville is served by WYWY, Barbourville, and stations in Louisville, Lexington, Corbin, and London, Kentucky, and Knoxville, Tennessee. Reception is good from all stations.

Television: Television reception is excellent from Lexington, Kentucky; Knoxville, Tennessee; Asheville, North Carolina; and Bristol, Virginia. Cable service is available.

Libraries

The Knox County Public Library serves Barbourville and Knox County. It has a total of 14,000 volumes, and the 1968 circulation was 13,973. Magazines, films, records, paintings and athletic equipment are also furnished. A story hour is held once a week. A bookmobile operates in the rural areas 5 days a week, serving 1,500 readers per month.



KNOX COUNTY HOSPITAL



BARBOURVILLE SUBDIVISION

Weeks Library at Union College is open to the public and has a collection of 44,000 volumes and a large number of periodicals.

Churches

There are seven churches in Barbourville representing the following denominations: Baptist, Methodist, Christian, Catholic, Pentecostal, Church of Christ and Seventh Day Adventist.

Financial Institutions

<u>Bank</u>	<u>Statement as of June 29, 1968</u>	
	<u>Assets</u>	<u>Deposits</u>
American Fidelity Bank	\$ 4,071,567.92	\$3,706,856.15
Union National Bank	11,047,822.41	9,943,337.97

Hotels and Motels

The following hotels and motels are located in Barbourville:

Terrell Motel	8 units
Faulkner Hotel	25 rooms
Travelers Inn Motel	21 units

Clubs and Organizations

Business and Civic: Chamber of Commerce, Kiwanis, Lions, Medical Society, Ministerial Association, Red Cross, PTA, and Civic League

Fraternal: American Legion, Masonic Lodge, Shrine, VFW

Women's: Woman's Club, DAR, Eastern Star, Garden Club, American Legion Auxiliary, VFW Auxiliary, American Business Women's Association, American Association of University Women, Daughters of America

Youth: Boy Scouts, Girl Scouts, Cub Scouts, Brownies, FFA, FHA, 4-H, FTA

Recreation

Local: A twelve-acre park, which includes a lighted football stadium, baseball and softball fields, badminton court and playground equipment, is owned and maintained by the American Legion.

The city maintains a playground with the following facilities: a regulation Little League field, football field, basketball court and playground equipment. There are also two other municipally-owned playgrounds for children.

The Indian Springs Country Club, located near Barbourville, has a nine-hole golf course, a private lake with cabin sites, large clubhouse, swimming pool and dining room.

A twelve-lane bowling center has recently been constructed.

Barbourville has one indoor motion picture theater and one outdoor theater.

Union College offers concerts, art exhibits and theater performances to area residents. Year-round swimming facilities are also available at the college.

Area: The Dr. Thomas Walker State Park is located 5 miles from the city with picnicking facilities available.

A nine-hole golf course is located in Knox County at Corbin, 12 miles distant.

Lake Cumberland and Norris Lake are 70 and 62 miles distant, respectively, and provide excellent facilities.

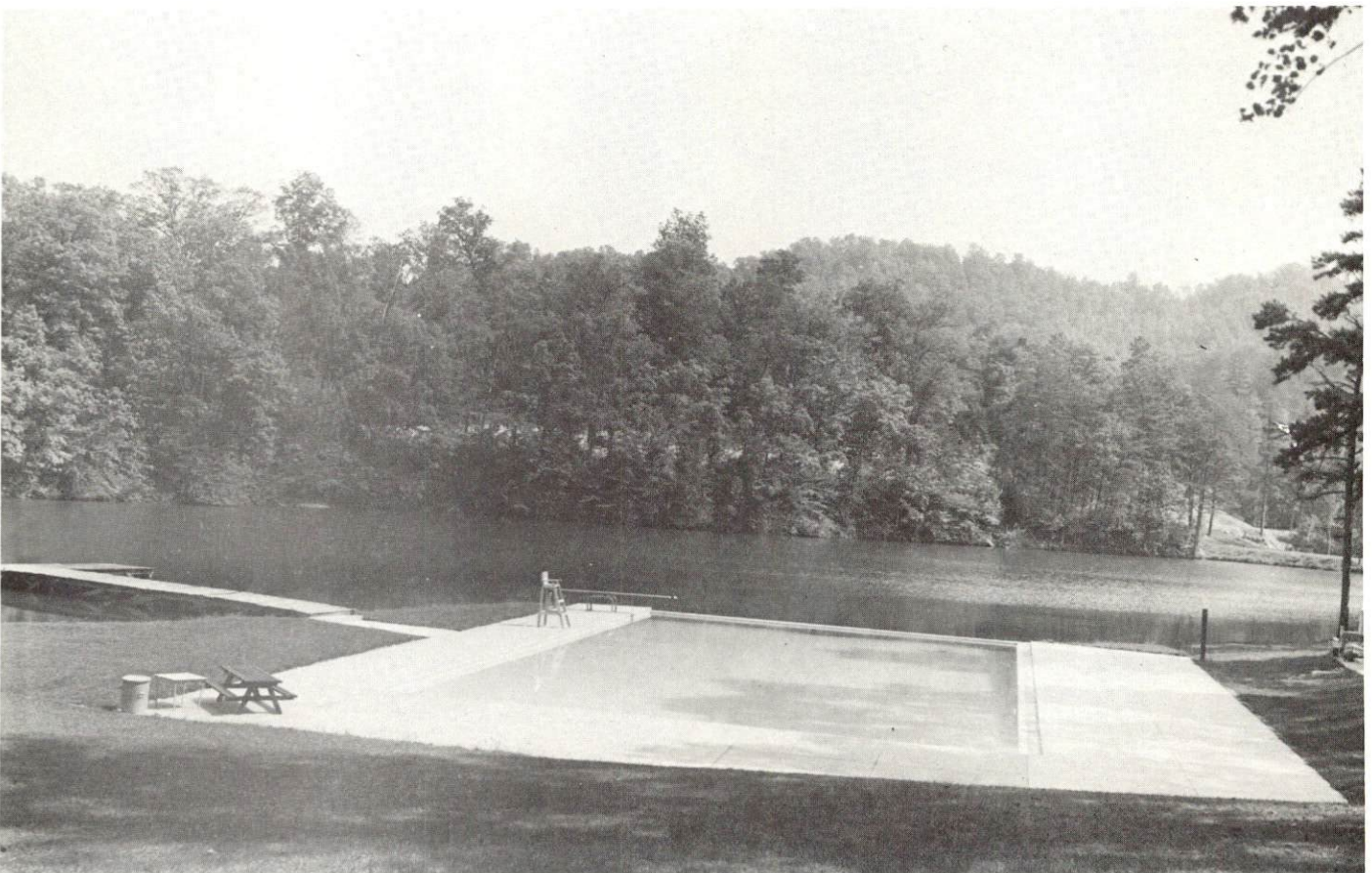
Pine Mountain State Park, 14 miles distant, has boat rental, paddle boats, fishing, nine-hole golf course, horseback riding, supervised recreation, hiking, picnic shelter, playground, and a wildflower garden. The Mountain Laurel Festival is held annually on the last weekend in May. "The Book of Job," a world-renowned choral drama, is staged in the Laurel Cove Amphitheater during June, July, and August.

Community Improvements

Public: Streets resurfaced - Knox County Water District completed - 75 units of low-cost housing under construction - \$200,000 addition to vocational school - 100-unit rental supplement housing project planned - \$750,000 and \$371,000 additions to county schools completed - new \$560,000 courthouse - new \$175,000 orphanage - new Mercury vapor lights installed on Main Street - new bank - new drive-in bank.

Business and Industrial: The East Kentucky Steel Company, new plant - a 21-unit motel - a new shopping center.

INDIAN SPRINGS COUNTRY CLUB
SWIMMING AND GOLFING FACILITIES



HISTORY

The first white men who came to Knox County were Dr. Thomas Walker and his companions in 1750. They were surveyors and agents of the Loyall Land Company of Virginia. Some of them built a log cabin and spent a winter about 6 miles from Barbourville, where they collected furs as a sideline. Today the twelve-acre Dr. Thomas Walker State Shrine contains a replica of the first house built in Kentucky, plus picnicking facilities and a museum. The park was acquired and the memorial cabin was constructed by the Barbourville Post of the American Legion. The cabin is built of round logs with wide chinked joints and a chimney conveniently placed at the small end of the room. It was Dr. Walker who named the Cumberland River and Mountains for the Duke of Cumberland, a son of George II, King of England at the time.

The soil of Knox County is a sandy loam and clay mixture which is generally well adapted to agriculture in the valleys and to timber growth on the hills and the mountains. Knox County has 373 square miles of territory.

Barbourville, the county seat of Knox County, was founded in 1800 and was named for James Barbour, who gave 38 acres for the town site. It is the oldest town in the eastern Kentucky area.

In 1890 the town was incorporated under an Act of the General Assembly which provided for a Board of Councilmen consisting of a mayor and seven councilmen.

Union College is located in Barbourville and has served southeastern Kentucky since its founding in 1879.

The first shot fired in Kentucky during the Civil War was fired in Barbourville.

Barbourville has produced two Kentucky Governors, Honorable James D. Black and Honorable Flem D. Sampson and a Lieutenant Governor, Honorable R.H. Tuggle, now member of the Interstate Commerce Commission in Washington, D. C.

SOURCES OF INFORMATION

- 1/ U. S. Bureau of the Census, U. S. Census of Population, Kentucky.
- 2/ Department of Sociology, University of Kentucky, Kentucky County Provisional Population Estimates, 1968, Lexington, Kentucky.
- 3/ Kentucky Department of Commerce, 1969 Kentucky Directory of Manufacturers.
- 4/ Kentucky Department of Economic Security, Division of Research and Statistics.
- 5/ Kentucky Department of Economic Security, Division of Employment Service.
- 6/ Kentucky Department of Commerce, Kentucky's Labor Supply Estimates, 1968.
- 7/ Office of Development Service & Business Research, University of Kentucky, Lexington, Kentucky.
- 8/ Kentucky Department of Education, Kentucky School Directory, 1968-69.
- 9/ Louisville & Nashville Railroad Company, Louisville, Kentucky.
- 10/ Consolidated Freightways, Louisville, Kentucky.
- 11/ Louisville & Nashville Railroad Company, Louisville, Kentucky.
- 12/ Kentucky Department of Revenue, Kentucky Property Tax Rates, 1968.