

1973

Industrial Resources: Letcher County - Whitesburg

Kentucky Library Research Collections
Western Kentucky University, spcol@wku.edu

Follow this and additional works at: https://digitalcommons.wku.edu/letcher_cty

 Part of the [Business Administration, Management, and Operations Commons](#), [Growth and Development Commons](#), and the [Infrastructure Commons](#)

Recommended Citation

Kentucky Library Research Collections, "Industrial Resources: Letcher County - Whitesburg" (1973). *Letcher County*. Paper 11.
https://digitalcommons.wku.edu/letcher_cty/11

This Report is brought to you for free and open access by TopSCHOLAR®. It has been accepted for inclusion in Letcher County by an authorized administrator of TopSCHOLAR®. For more information, please contact topscholar@wku.edu.

INDUSTRIAL RESOURCES

WHITESBURG KENTUCKY



LETCHER COUNTY, KENTUCKY

WHITESBURG INDUSTRIAL SITE

1973

WHITESBURG INDUSTRIAL SITE

1973

For more information about the following site, contact Paul J. Vermillion, Bank of Whitesburg, Whitesburg, Kentucky or the Kentucky Department of Commerce, Capital Plaza Office Tower, Frankfort, Kentucky, 40601.

SITE #1: ACREAGE: 9.5 acres

LOCATION: In county, approximately one-half mile west of Whitesburg

ZONING: Industrial

HIGHWAY ACCESS: Fronts on new Kentucky 15

RAILROAD: Louisville and Nashville Railroad borders site on the southeast boundary

WATER: Whitesburg municipal service

SIZE LINE: 6-inch line crosses site

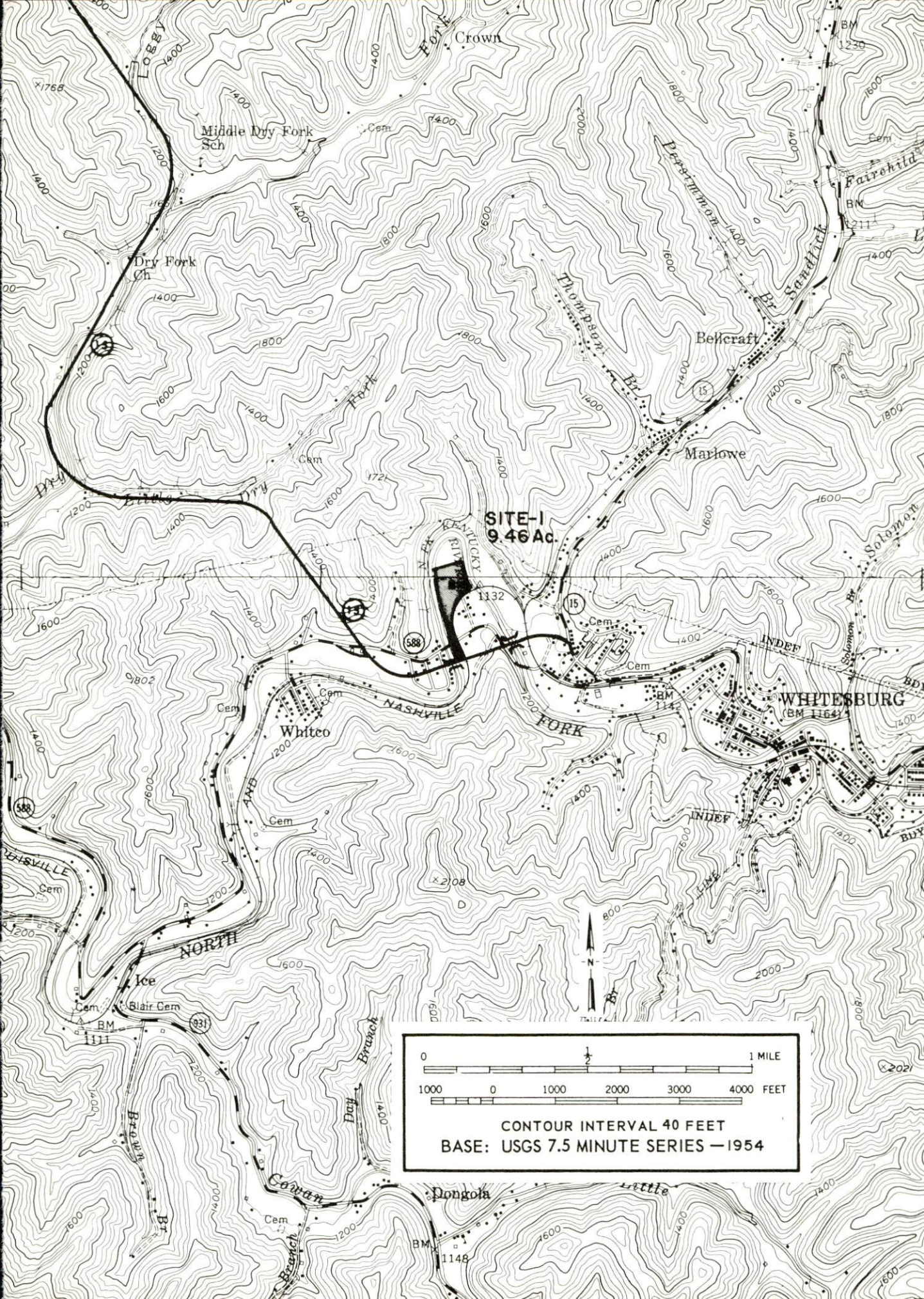
GAS: Natural gas not available

ELECTRICITY: Kentucky Power Company

SEWERAGE: Whitesburg municipal service

SIZE LINE: 15-inch line crosses site and a treatment plant is adjacent

OPTIONED BY: Whitesburg-Letcher County Industrial Foundation



INDUSTRIAL RESOURCES
WHITESBURG, KENTUCKY

Prepared by
The Kentucky Department of Commerce
in cooperation with
The Whitesburg-Letcher County Development Foundation
1973

This copy has been prepared by the Kentucky Department of Commerce,
Division of Research and Planning, and the cost of printing paid from
state funds.

TABLE OF CONTENTS

<u>Chapter</u>	<u>Page</u>
INDUSTRIAL SITES	i
WHITESBURG, KENTUCKY - A RESOURCE PROFILE	1
THE LABOR MARKET	5
Population Trends	5
General Employment Characteristics, 1971	5
Manufacturing Employment Trends by Industry	6
Major Whitesburg Manufacturing Firms, Their Products and Employment	6
Wages	7
Labor Organizations	8
Estimated Male Labor Supply	8
Estimated Female Labor Supply	8
Per Capita Personal Income	9
TRANSPORTATION	10
Rail	10
Truck Service	10
Air	11
Taxi	11
POWER AND FUEL	12
Electricity	12
Natural Gas	12
Other Fuels	12
WATER AND SEWERAGE	13
Water	13
Sewerage	13
LOCAL GOVERNMENT	15
City	15
County	15

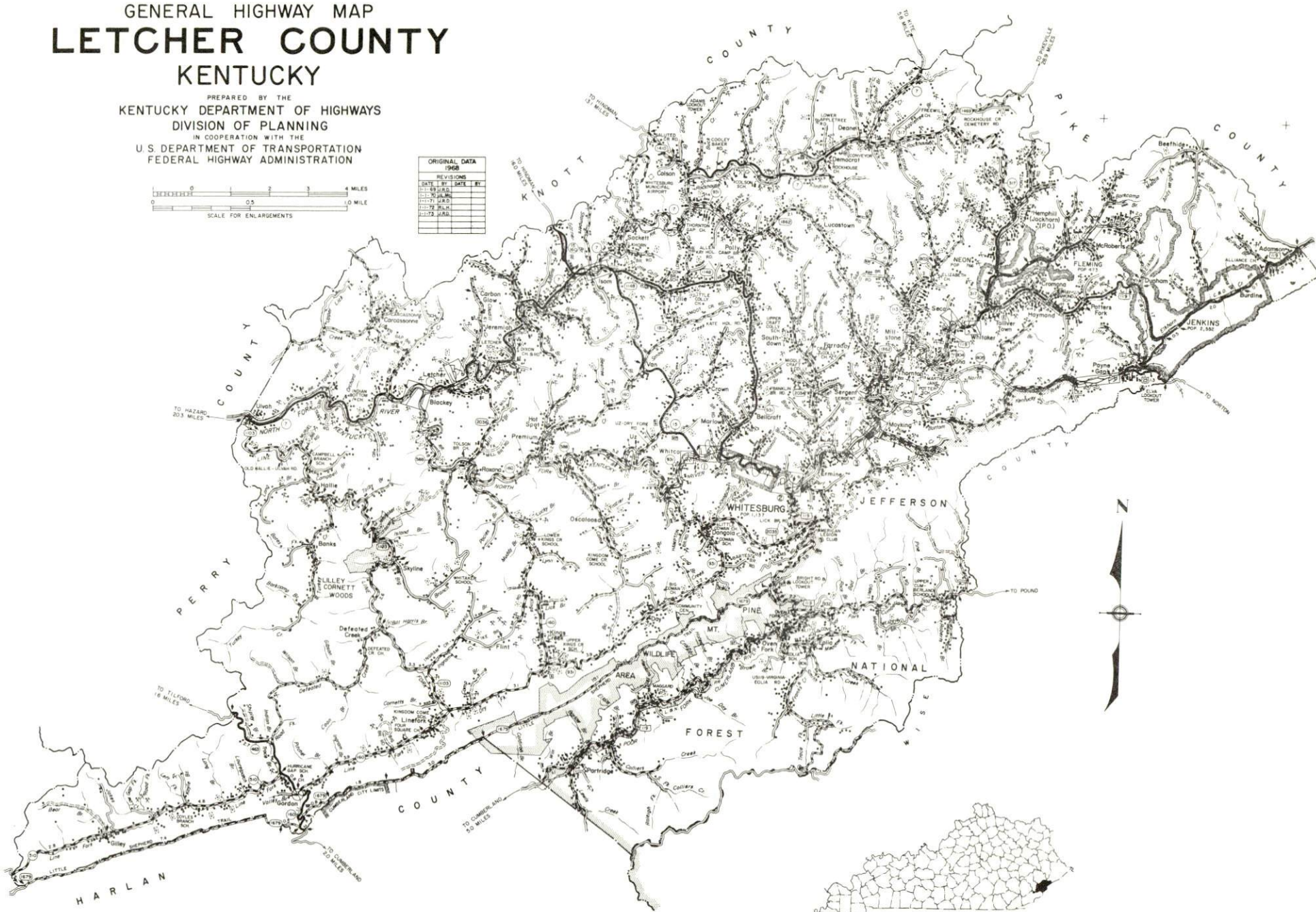
<u>Chapter</u>	<u>Page</u>
Assessed Value of Property, 1972	15
Property Taxes	15
Local Property Tax Rate Per \$100 of	
Assessed Valuation, 1972	16
Planning and Zoning	16
Safety	16
Police	16
Fire	16
Rescue Service	16
Sanitation	17
EDUCATION	18
Public Schools	18
Vocational Schools	18
Colleges and Universities	19
HEALTH	21
Hospitals	21
Nursing Homes	21
Public Health	21
OTHER LOCAL FACILITIES	23
Communications	23
Library Services	23
Religious Institutions	23
Financial Institutions	24
Hotels and Motels	24
Clubs and Organizations	24
RECREATION	27
Local	27
Area	27
AGRICULTURE - NATURAL RESOURCES - CLIMATE	28
Agriculture	28
Natural Resources	28
Climate	29
HISTORY	30

GENERAL HIGHWAY MAP LETCHER COUNTY KENTUCKY

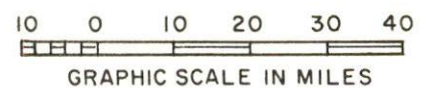
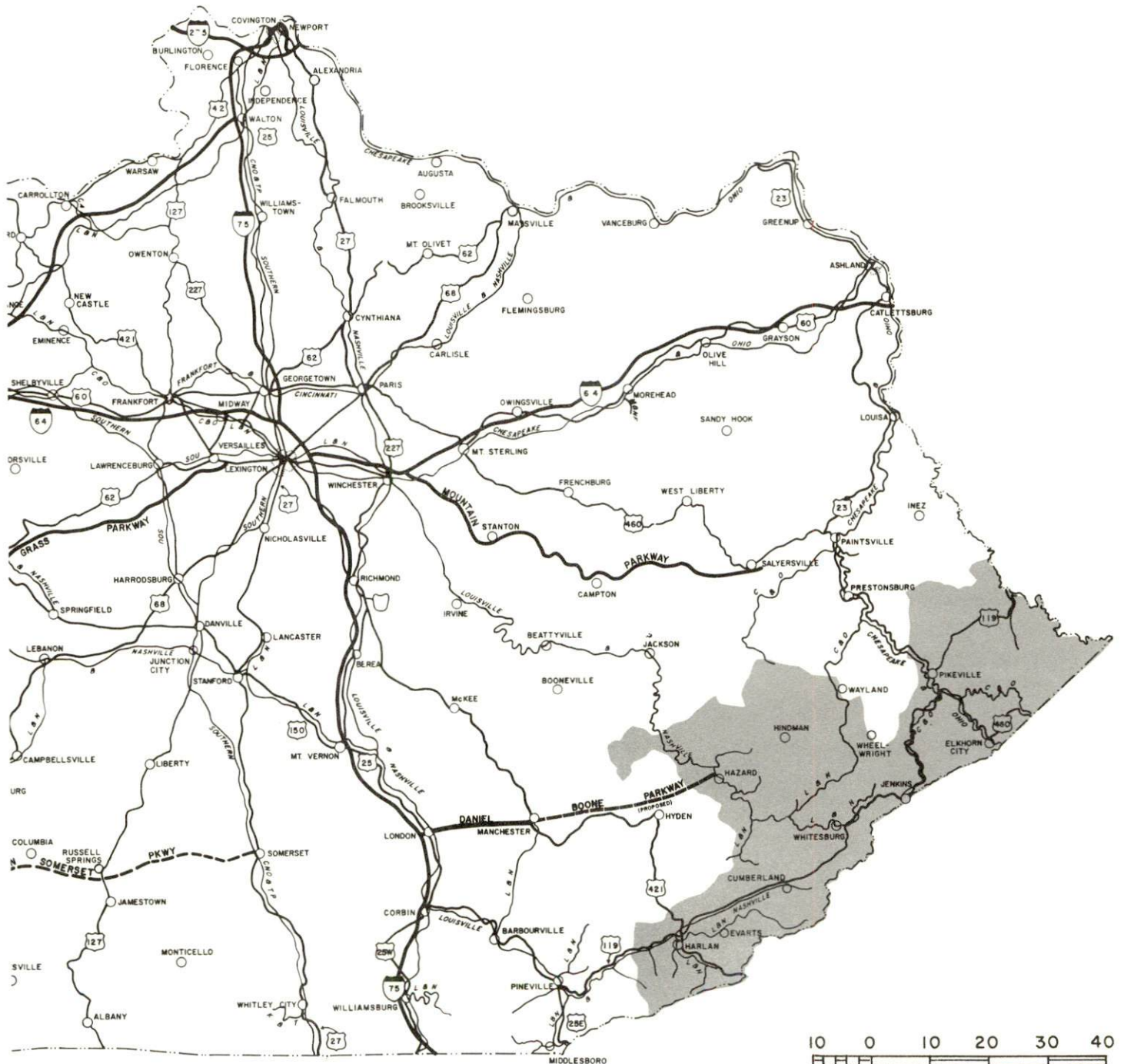
PREPARED BY THE
KENTUCKY DEPARTMENT OF HIGHWAYS
DIVISION OF PLANNING
IN COOPERATION WITH THE
U.S. DEPARTMENT OF TRANSPORTATION
FEDERAL HIGHWAY ADMINISTRATION



ORIGINAL DATA 1968			
DATE	BY	DATE	BY
1-1-68	J.M.B.		
1-1-68	J.M.B.		
1-1-68	J.M.B.		
1-1-68	J.M.B.		
1-1-68	J.M.B.		
1-1-68	J.M.B.		
1-1-68	J.M.B.		
1-1-68	J.M.B.		
1-1-68	J.M.B.		
1-1-68	J.M.B.		



WHITESBURG LABOR MARKET AREA



WHITESBURG, KENTUCKY - A RESOURCE PROFILE

Whitesburg, a 1972 All Kentucky City and county seat of Letcher County, is located in the southern Appalachian Region of southeastern Kentucky. It is approximately 146 miles southeast of Lexington, 219 miles southeast of Louisville, 221 miles southeast of Cincinnati, Ohio, and 153 miles north of Knoxville, Tennessee. The 1970 population of Whitesburg was 1,137, and Letcher County had a 1970 population of 23,165.

The Economic Framework

Total employment in Letcher County averaged 7,240 in 1971 with agriculture providing 100 jobs, manufacturing 200, trade and services 1,180, government 1,140, and mining and quarrying 2,760. Since 1962, manufacturing employment has increased by approximately 52 percent. Major industrial products are soft drinks, lumber, and machine shop products.

Per capita personal income in the county in 1970 was \$2,572. Between 1960 and 1970, per capita personal income in the county increased approximately 111 percent.

The Whitesburg labor market area includes Letcher County, the four adjoining Kentucky counties, and Dickenson and Wise Counties in Virginia. In 1971, employment in the Kentucky portion of the labor market area totaled 42,720 with agriculture providing 490 jobs, manufacturing 1,060, trade and services 10,240, government 8,150, and mining and quarrying 13,690. Industrial employment is greatest in lumber and wood products and in the food and kindred products industries.

This area has a deficit of 13,732 manufacturing jobs when measured against the national industrial employment-population ratio. This indicates an area with a potential for additional manufacturing production.

Resources for Growth

1. There is a current estimated labor supply of 18,480 men and 17,740 women available for industrial jobs in Letcher County and the surrounding Kentucky counties. In addition, 9,930 young men and 9,310 young women in this area will become 18 years of age by 1979 and potentially available for employment. The current labor supply can also be increased by the number of men and women in the adjoining Virginia counties who are available for industrial jobs.

2. The Louisville & Nashville Railroad provides rail service to Whitesburg. Major highway access is by U. S. 119 and Kentucky Highway 15. The Whitesburg Municipal Airport has one paved 2,550-foot runway which can accommodate light aircraft. Commercial air service is available at the London-Corbin War Memorial Airport, 115 miles away.

3. Electric power is available in large quantity from the Kentucky Power Company and Cumberland Valley RECC. Natural gas is not available in Whitesburg, but there are four distillate fuel oil distributors. One propane dealer is located in Kona, 8 miles distant, and one in Hazard, 32 miles distant. The raw water supply from the North Fork of the Kentucky River is adequate for continued growth.

4. Industrial site - A 9.46-acre industrial site is available in Whitesburg.

5. Education - Two school systems, the Jenkins Independent School District and the Letcher County School System, operate in Letcher County and educational TV is available. One university, one senior, two junior, and three community colleges are within 75 miles of Whitesburg.

The Letcher County Area Vocational Education Center is located in Whitesburg and offers eight different courses. The Hazard State Vocational-Technical School at Hazard is only 32 miles away and offers eighteen different courses.

Community Programs for Improvement

Recently completed:

1. In 1972, the Whitesburg Appalachian Regional Hospital expanded its pharmacy and added a new and expanded X-ray unit.
2. A new sewage treatment plant, water and sewer lines to serve the industrial site were completed in October of 1972.
3. Little Shepherd of Kingdom Come, an outdoor theatre group started production in the summer of 1972.
4. Improvements in the Jenkins Independent School District include: a new elementary and senior high school; the installation of I. G. A. P. (Individual Group Assessment Profiles).
5. Improvements in the Letcher County School System include: two new schools, heating system renovation for two buildings, sewage treatment plants constructed at two elementary schools and one senior high school, construction of two gymnasiums, phase elective English and curriculum development.

Under Construction:

1. A new Letcher County Mental Health and Mental Retardation Clinic.
2. Two businesses.
3. An addition to the A & P food store.
4. A new elementary school for the Jenkins Independent School District.

Planned:

1. The Whitesburg Appalachian Regional Hospital plans to add an emergency room complex.
2. Sixty-four units of low-rent housing will be built.
3. A new motel is in planning stages.
4. The Whitesburg Municipal Airport is repairing its runway and adding lights in 1973.
5. Career Education will be added to the curriculum in both school systems - Jenkins Independent School District and Letcher County School System.
6. Completion is expected in 1974 on an addition to the Letcher County Vocational Center for mine machinery laboratory, auto body shop and related space, and expansion of Health Occupations Program.

Recreation, Entertainment and Livability

An outdoor drama, Little Shepherd of Kingdom Come, is performed at Whitesburg during the summer months.

Within a 30-mile radius, Whitesburg is surrounded by beautiful natural forests.

Jefferson National Forest is located in the southeastern section of Pike and Letcher Counties, with 961 acres undeveloped. Hunting, fishing and camping are permitted.

Kingdom Come State Park is located at Cumberland, 24 miles southwest of Whitesburg. The 1,000-acre park is open all year and offers fishing in a 3-acre lake, hiking, picnic areas and a playground. There are primitive tent and trailer sites available for camping.

The Lilley Cornett Woods is located in Letcher County. 554 acres are preserved in this natural untamed state as a virgin forest. Guided tours are offered during the months of April to September.

Little Shepherd Trail follows the "literary path" taken by John Fox, Jr.'s famous "Little Shepherd of Kingdom Come." This trail winds along 2,800 feet of Pine Mountain which is located between Whitesburg and Harlan. Picnic areas and camp sites are available. This unique linear park, when complete, will consist of 100 miles of unspoiled mountain trails.

THE LABOR MARKET

POPULATION TRENDS

<u>Area</u>	<u>Population</u>			<u>Percent Change</u>	
	<u>1970</u>	<u>1960</u>	<u>1950</u>	<u>1960-70</u>	<u>1950-60</u>
Whitesburg	1,137	1,774	1,393	-35.9	+27.4
Labor Market Area	162,551	201,796	259,313	-19.4	-22.2
Letcher County	23,165	30,102	39,522	-23.0	-23.8
Harlan County	37,370	51,107	71,751	-26.9	-28.8
Knott County	14,698	17,362	20,320	-15.3	-14.6
Perry County	26,259	34,961	46,566	-26.4	-24.9
Pike County	61,059	68,264	81,154	-10.6	-15.9

Source: U. S. Department of Commerce, Bureau of the Census, Census of Population, 1970, 1960, 1950.

GENERAL EMPLOYMENT CHARACTERISTICS, 1971

<u>Major Employment Group</u>	<u>Employment</u>	
	<u>Letcher County</u>	<u>Labor Market Area</u>
TOTAL	7,240	42,720
Agricultural	100	490
Nonagricultural	7,140	42,230
Manufacturing	200	1,060
Government	1,140	8,150
Trade and Services	1,183	10,239
Mining and Quarrying	2,763	13,687
Other	1,854	9,094

Source: Kentucky Department of Economic Security, Division of Research and Statistics.

LABOR ORGANIZATIONS

There are presently no unions representing manufacturing workers in Whitesburg.

ESTIMATED MALE LABOR SUPPLY WHITESBURG LABOR MARKET AREA

Area	Current				Future
	Total	Not in Labor Force	Unemployed	Under- employed	Reaching 18 Yrs. of Age by 1979
Labor Market					
Area	18,477	11,896	2,435	4,146	9,930
Letcher	2,440	1,712	421	307	1,401
Harlan	4,830	3,022	554	1,227	2,240
Knott	2,140	1,516	193	431	965
Perry	3,101	2,033	427	641	1,629
Pike	5,993	3,613	840	1,540	3,695

Sources: Kentucky Department of Economic Security, Kentucky Labor Supply Estimates by County, 1972. Kentucky Department of Commerce, Future Labor Supply by 1979.

ESTIMATED FEMALE LABOR SUPPLY WHITESBURG LABOR MARKET AREA

Area	Current				Future
	Total	Not in Labor Force	Unemployed	Under- employed	Reaching 18 Yrs. of Age by 1979
Labor Market					
Area	17,741	12,436	1,415	3,890	9,311
Letcher	2,820	2,157	249	414	1,362
Harlan	4,306	2,983	336	987	2,101
Knott	1,505	1,085	107	313	916
Perry	2,541	1,649	243	649	1,463
Pike	6,569	4,562	480	1,527	3,469

Sources: Kentucky Department of Economic Security, Kentucky Labor Supply Estimates by County, 1972. Kentucky Department of Commerce, Future Labor Supply by 1979.

PER CAPITA PERSONAL INCOME

<u>Area</u>	<u>1970</u>	<u>1960</u>	<u>% Change</u>
Letcher County	\$2,572*	\$1,215	+111.7
Labor Market Area Range	\$1,372 to 2,572*	\$514 to 1,424	N. A.
Kentucky	3,099	1,581	+ 96.0
U. S.	3,933	2,216	+ 77.5

*Unadjusted for commuting.

Sources: University of Kentucky, Office of Development Services and Business Research, Per Capita Income in Kentucky. U. S. Department of Commerce, Bureau of Economic Analysis, Survey of Current Business, August 1972.

TRANSPORTATION

Rail

Line serving Whitesburg - Louisville & Nashville Railroad

Services - One freight train daily except Sunday, switching daily except Sunday, siding space; nearest piggyback facilities are in Lexington, 146 miles away

For details on routing, schedules, rates, and services, contact:

Manager of Industrial Development
Louisville & Nashville Railroad Company
908 West Broadway
Louisville, Kentucky 40203

Truck Service

Company

Home Office

Bell Lines, Inc.

Charleston, West Virginia

Hazard Express

Lexington, Kentucky

Hogan Storage & Transfer Co.
(Irregular)

Williamson, West Virginia

McDuffee Motor Freight, Inc.
(United Trucking)

Lebanon, Kentucky

Overnite Transportation Company

Richmond, Virginia

Point Express, Inc.

Charleston, West Virginia

Smith's Transfer Corporation
of Virginia

Staunton, Virginia

Other Freight Services

United Parcel Service has a shipping center in Pikeville, 54 miles north-east of Whitesburg. For regular scheduled pickups or for occasional pickups, arrangements must be made with the Louisville office of U. P. S.

HIGHWAY MILES AND TRUCK TRANSIT TIME IN DAYS FROM
WHITESBURG, KENTUCKY, TO SELECTED MARKET CENTERS

City	Highway Miles	Delivery		City	Highway Miles	Delivery	
		Time TL				Time TL	
Atlanta, Ga.	347	2		Los Angeles, Calif.	2,327	5-7	
Birmingham, Ala.	407	2		Louisville, Ky.	219	1	
Chicago, Ill.	512	2-3		Nashville, Tenn.	338	2	
Cincinnati, Ohio	221	2-3		New Orleans, La.	762	3-4	
Cleveland, Ohio	473	2-3		New York, N. Y.	880	3-4	
Detroit, Mich.	487	2-3		Pittsburgh, Pa.	505	3-4	
Knoxville, Tenn.	153	1		St. Louis, Mo.	484	2-3	

Source: Delivery Time Only - Overnite Transportation Company, P. O.
Box 1216, Richmond, Virginia 23209.

Air

	<u>Local</u>	<u>Nearest Commercial</u>
	Whitesburg Municipal Airport	London-Corbin War Memorial Airport
Location:	7 1/2 miles north-northwest of Whitesburg	London, 115 miles west of Whitesburg
Runways:	1 paved	1 paved
Length:	2,550 feet	6,000 feet
Traffic		
Control:	Wind sock	Wind sock
Lighting:	None	Beacon, runway and obstruction lighted
Services:	80-100 octane, hangar	80 and 100 octane, JP-A-50, Piedmont Airlines, taxi, U-Drive-It, weather, flight training, charter and ambu- lance service, vending machines

Air Freight
Service:

Space available basis

Taxi

Twelve taxis, 24-hour service

POWER AND FUEL

Electricity

Company serving Whitesburg - Kentucky Power Company
Source of power - Kentucky Power Company
Total generating capacity - 1,080,000 KW
For industrial rates contact:

Kentucky Power Company
Hazard, Kentucky

Company serving Letcher County - Cumberland Valley Rural Electric
Cooperative Corporation
Source of power - East Kentucky Power Cooperative
Total generating capacity - 548,000 KW
For industrial rates contact:

Cumberland Valley RECC
Gray, Kentucky

Natural Gas

Natural gas service is not available in Whitesburg.

Other Fuels

Propane and butane - LP Gas Company, located in Kona, 8 miles northeast of Whitesburg; Bo-Lane Gas Company, located in Hazard, 32 miles northwest of Whitesburg

Fuel Oils

Distillate fuel oil distributors in Whitesburg - Ashland Oil Company, Standard Oil Company, Gulf Oil Company, Union 76 Company

Residual fuel oil - arrangements must be made with the refinery.

Low sulphur content coal - available locally.

WATER AND SEWERAGE

Water

Company serving Whitesburg - Whitesburg Municipal Water Works
Source - North Fork of Kentucky River
Treatment plant capacity - 676,000 gallons per day
Average daily consumption - 264,000 gallons
Peak daily consumption - 350,000 gallons
Type treatment - Filtered (sand and gravel), chlorine
Storage capacity - 300,000 gallons
Size mains - 8, 6, and 4 inches
Average pressure - 80 psi
Average temperature - 70° F.

MONTHLY WATER RATES FOR WHOLESALE AND INDUSTRIAL CONSUMERS

First	2,000 gallons	\$4.40 (Minimum)
Next	2,000 gallons	1.65 per 1,000 gallons
Next	2,000 gallons	1.50 per 1,000 gallons
Next	5,000 gallons	1.30 per 1,000 gallons
Next	15,000 gallons	1.15 per 1,000 gallons
Next	25,000 gallons	1.05 per 1,000 gallons
Next	50,000 gallons	.90 per 1,000 gallons
All over	101,000 gallons	.55 per 1,000 gallons

Surface water sources - North Fork of Kentucky River and Poor Fork of Cumberland River
Average discharge - North Fork of Kentucky River at Hazard, Kentucky 538 cfs (31 years); Poor Fork of Cumberland River at Cumberland, Kentucky 139 cfs (31 years)
Expected ground water yield - 5 to 50 gpm along Poor Fork of Cumberland River; 50 to 200 gpm over remainder of county

Sewerage

Company serving Whitesburg - Whitesburg Sewer Plant
Design capacity - 500,000 gallons per day
Average daily flow - 260,000 gallons
Treatment - Primary and secondary
Type treatment - Aeration, clarifier, drying beds
Treated effluent discharged into - North Fork of Kentucky River
Size of sanitary mains - 15 inches; Size of storm mains - 18 inches
Rates - 75 percent of monthly water bill



Letcher County Courthouse



Municipal Building, Whitesburg

LOCAL GOVERNMENT

City

Structure - Mayor - 4-year term; 6 councilmen - 2-year terms

Budget 1973 - General Fund	\$ 70,649
Water and Sewer Fund	101,373
Parking Revenue Fund	27,254
Sanitation Fund	20,092

Fees and licenses - Occupational licenses - \$7.50 - \$450.00 annually;
auto stickers - \$7.50 annually

County

Structure - County Judge - 4-year term; 3 magistrates - 4-year terms
Budget 1972-73 - General Fund \$157,475; Road Fund \$95,000

Assessed Value of Property, 1972

<u>Classes of Property</u>	<u>Whitesburg</u>	<u>Letcher County</u>
Real Estate	\$5,185,200	\$39,374,600
Tangibles	2,366,200	40,110,500
Public Service	1,028,458	14,012,974 (1971)

Property Taxes

Land and buildings are taxed by the state and may be taxed by local jurisdictions. The state rate is \$0.015 per \$100 of assessed valuation.

Tangible personal property owned by manufacturers (automobiles, trucks, finished goods, office furniture, office equipment) is taxed by the state at \$0.15 per \$100 and may be taxed by local jurisdictions.

Manufacturing machinery, raw materials inventories, and goods in process inventories are not subject to local taxation. The state rate is \$0.15 per \$100.

Property stored in public warehouses is not subject to local taxation. The state rate is only \$0.015 per \$100.

All property is assessed at 100 percent of fair cash value.

Local Property Tax Rate Per \$100 of Assessed Valuation, 1972*

<u>Taxing Jurisdiction</u>	<u>Whitesburg</u>	<u>Letcher County</u>
County	\$.318	\$.318
School	1.101	1.101
City	.240	

Planning and Zoning

City agency - Whitesburg Planning and Zoning Commission

Zoning enforced - City only

Subdivision regulations enforced - City and 5 miles beyond city limits

Local codes enforced - Building and Housing

Mandatory state codes enforced - Plumbing, National Fire Protection

Association Code, National Building Code (for major buildings and residential construction containing more than 12 bedrooms per building)

Other programs - Public Housing, Urban Renewal, Neighborhood Development Program

Safety

<u>Police</u>	<u>Whitesburg</u>	<u>Letcher County</u>
Total staff	4	4
Radio-patrol cars	2	1

Fire

American Insurance

Association Fire Rating 7 and 9

Full-time staff 4

Volunteers 22

Equipment:

750 gpm pumper 1

500 gpm pumper 1

Rescue Service

Buckhorn Lake Emergency Ambulance Service

Staff - 9

Equipment - 4 ambulances, resuscitator, plastic splints, oxygen equipment, porta power

Personnel training - Emergency Medical Technician Course, First Aid, cardiac massage

*Kentucky Department of Revenue, Kentucky Property Tax Rates, 1972.

Sanitation

Type service

Fee charged:

 residential

 business

Collection frequency:

 residential

 business

Trash pickup

Disposal method

Whitesburg

Municipal

\$2 monthly

\$4 minimum to \$75 monthly

Twice weekly

Daily

On call

Sanitary landfill

EDUCATION

Public Schools

	<u>Letcher County</u>
Total Enrollment (1972-73)	6,169
Elementary	4,757
High School	1,412
Student-Teacher Ratio	23-1
Elementary	24-1
High School	19-1
Accreditation	Southern Association of Colleges and Schools
Percent High School Graduates to College	34.4
Expenditures Per Pupil (1971-72)	\$472.58
Bonded Indebtedness, June 30, 1972	\$2,450,000

Vocational Schools

	<u>Nearest Area School</u>	<u>Nearest Area Education Center</u>
Location	Hazard State Vocational Technical School	Letcher County Area Vocational Education Center
Miles Distant	Hazard 32	Whitesburg
Curriculum	Secretarial Clerical Practical Nursing Learning Lab Electronics (Industrial) Highway Technology Auto Body Repair Auto Mechanics Carpentry Commercial Food Cosmetology Diesel Mechanics Drafting Electricity Heavy Equipment Machine Shop Mine Maintenance Welding	Clerical Secretarial Health Careers Auto Mechanics Carpentry Drafting Electricity Welding

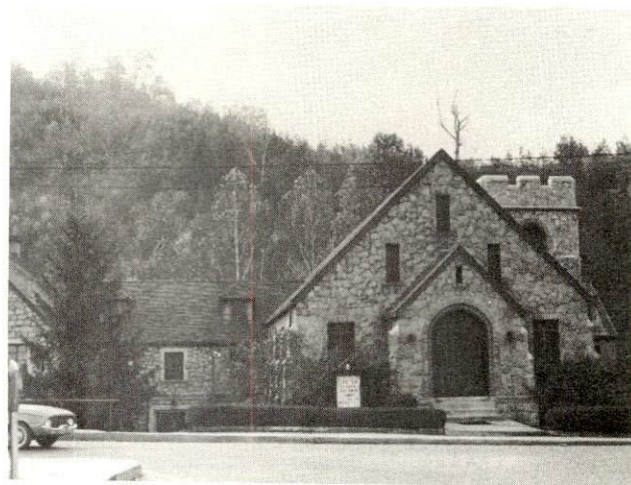
Arrangements can be made to provide training in the specific production skills required by an industrial plant. Instruction may be conducted either in the vocational school or in the industrial plant, depending upon the desired arrangement and the availability of special equipment.

Colleges and Universities

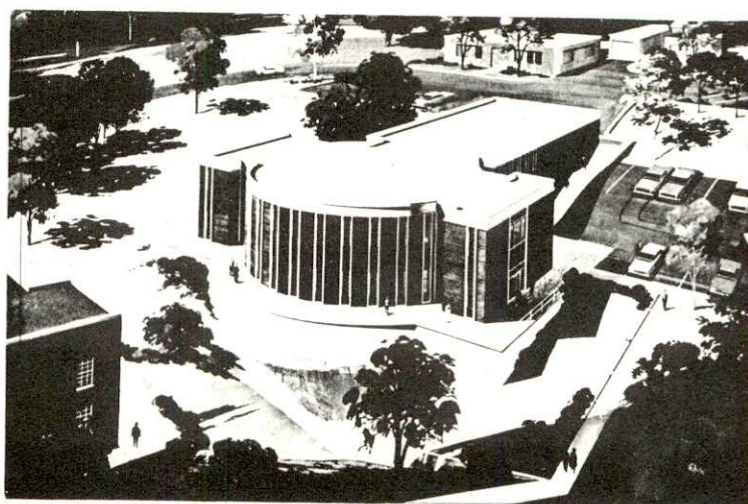
<u>Name</u>	<u>Area - Within 75 Miles</u>		<u>Highest Degree Conferred</u>
	<u>Location</u>	<u>Enrollment (Fall, 1972)</u>	
Alice Lloyd Junior College	Pippa Passes	280	Associate
Hazard Community College	Hazard	203	Associate
Lees Junior College	Jackson	352	Associate
Pikeville College	Pikeville	824	Baccalaureate
Prestonsburg Community College	Prestonsburg	457	Associate
Southeast Community College	Cumberland	306	Associate
University of Virginia	Wise, Virginia	765	B. A., B. S.



First Baptist Church



Presbyterian Church



New Whitesburg School Building
Library and Cafeteria Facilities



Letcher County Vocational Extension Center - Whitesburg

HEALTH

Hospitals

<u>General Hospital</u>	<u>Location</u>	<u>Beds</u>
Whitesburg Appalachian Regional Hospital	Whitesburg	92

General hospital facilities - Emergency room (4 doctors for emergency room, full-time), laboratory, radio equipment, obstetrics, 2 operating rooms, intensive care unit/coronary care unit, physical therapy, home health service, blood bank, pharmacy, EKG equipment, nursery, X-ray equipment, inhalation therapy

Medical staff - 13 doctors, 14 registered nurses, 27 licensed practical nurses, anesthesiologist, radiologist, pathologist, registered pharmacist, Ladies Auxiliary, teen-age volunteers

Other - The Frontier Nursing Service, established in 1925 by Mary Breckinridge, is in service in seven major towns, and in four counties, including Letcher County.

Nursing Homes

	<u>Number</u>	<u>Beds</u>
Personal care home	1	42

Public Health

Facility - Letcher County Health Department

Staff - 4 registered nurses, 1 sanitarian, 4 clerks, 1 administrative assistant, 2 auxiliary workers

Budget 1972-73 - \$81,226.12

Improvements: The hospital plans an emergency room complex addition. Presently under construction is a new Letcher County Mental Health and Mental Retardation Clinic.



Whitesburg Appalachian Regional Hospital

OTHER LOCAL FACILITIES

Communications

Telephone - South Central Bell Telephone Company
Services - Standard

Telegraph - Western Union Telegraph Company
Services - Money orders, telephone and mail deliveries

Postal - U. S. Post Office
Class - First
Mail received - once daily
Mail dispatched - twice daily

Newspapers - The Mountain Eagle
Weekly and circulation - 5,400
Other papers received from - Cromona, Lexington and Louisville,
Kentucky; Knoxville, Tennessee

Radio - WTCW
Stations received from - Jenkins, Lexington, Louisville and Neon,
Kentucky; Knoxville, Tennessee; Cincinnati, Ohio

Television -
Cable service
Reception from - Bluefield, Charleston and Huntington, West Virginia;
Bristol, Johnson City, Kingsport and Knoxville, Tennessee
Kentucky Educational Television - Hazard transmitter, Channel 35

Library Services

Public library - Letcher County Public Library
Size collection - 50,693 volumes
Circulation, 1972 - 208,906
Services - Two bookmobiles, newspapers, film, filmstrips, magazines,
art class, art, story hour, slides, movie projectors, sporting goods,
inter-library loan service

Religious Institutions

Number of churches - 4
Denominations - Baptist, Church of God, Methodist, Presbyterian
Nearest synagogues - Lexington
Congregations - Adath Israel (reform), Ohavey Zion (traditional)

Financial Institutions

<u>Bank</u>	<u>Statement as of December 30, 1972</u>	
	<u>Assets</u>	<u>Deposits</u>
The Bank of Whitesburg	\$26,206,143.71	\$24,115,482.39
First Security Bank	9,437,986.51	8,713,117.53

Hotels and Motels

Total number - 3
Units - 100

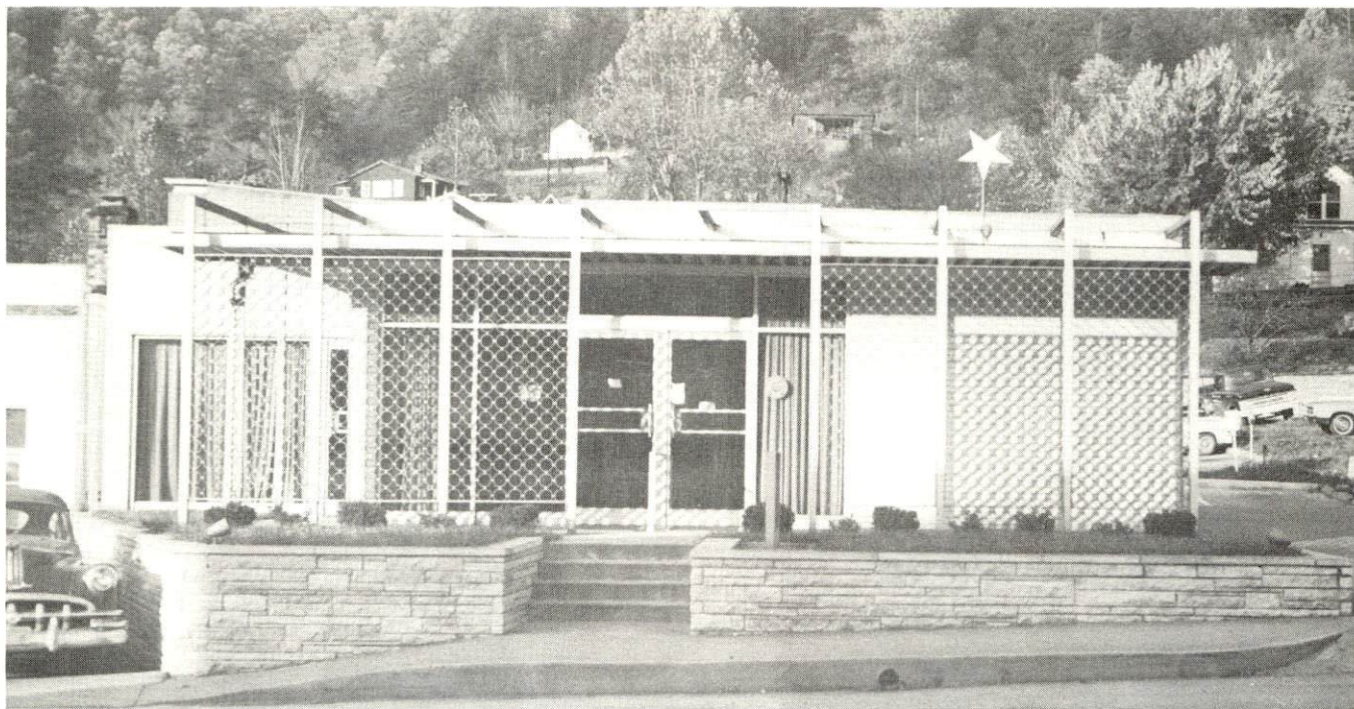
Clubs and Organizations

Business and Civic - Dental Society, Jaycees, Kiwanis, Lions, Medical Society, Ministerial Association, Red Cross, Rotary, Salvation Army

Fraternal - American Legion, Masonic Lodge, VFW

Women's - American Legion Auxiliary, Business and Professional Women's Association, DAR, Eastern Star, Garden Club, Historical Society, Homemakers, Jaycettes, Lioness, Woman's Club, VFW Auxiliary

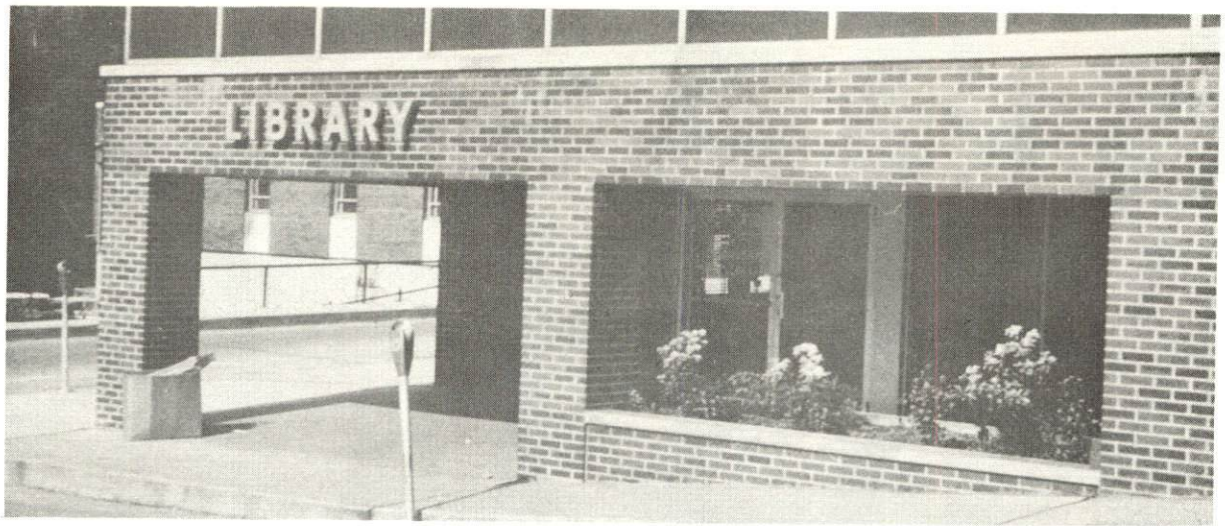
Youth - Beta Club, Boy Scouts, Brownies, Cub Scouts, FBLA, FFA, 4-H, FHA, FTA, Girl Scouts, Little League baseball and football



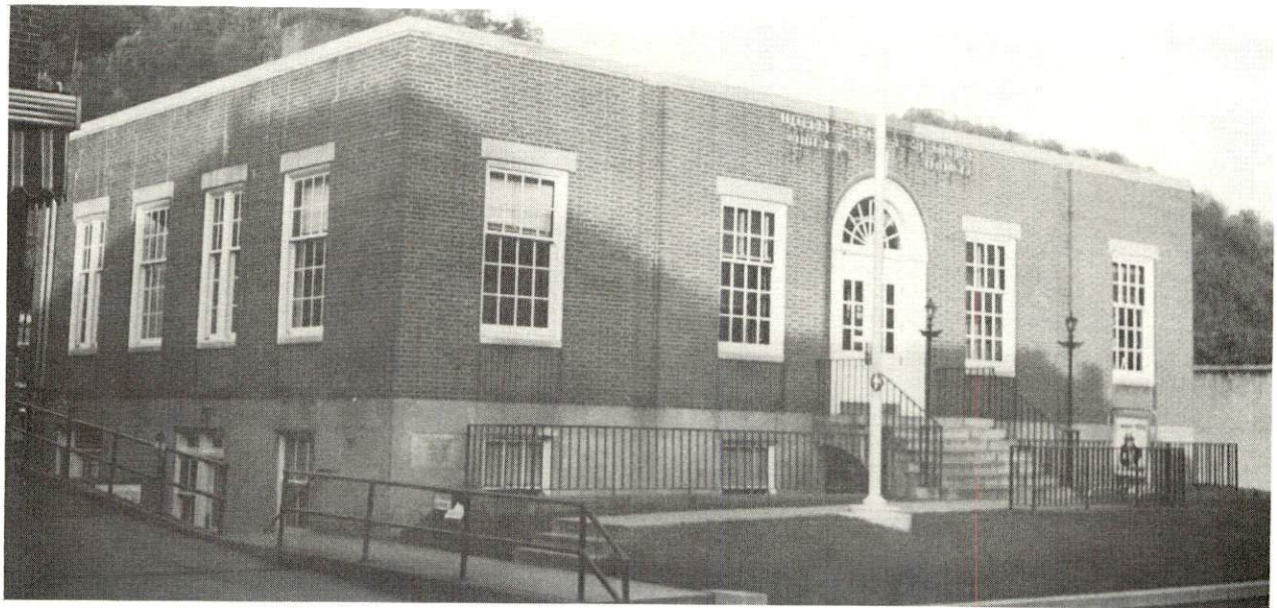
First Security Bank



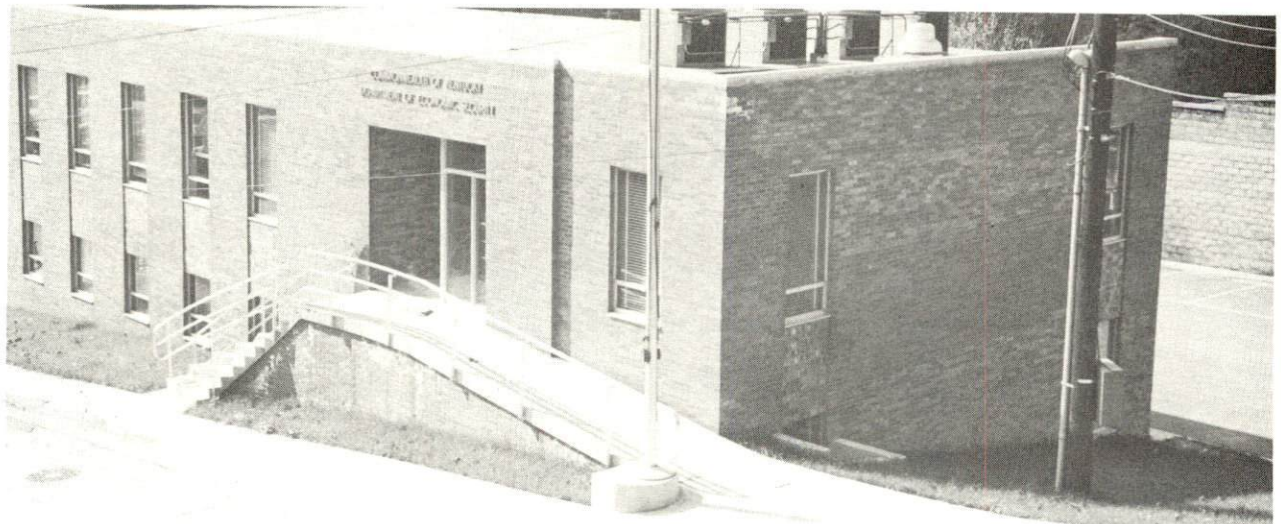
The Bank of Whitesburg



New Letcher County Library



U.S. Post Office - Whitesburg



New Commonwealth of Kentucky Office Building

RECREATION

Local

Public Recreation Facilities

Park - 1
Playgrounds - 2
Swimming pool - 1
Tennis courts - 4
Baseball diamond - 1
Football field - 1

Private Recreation Facilities

Country club - 1
Golf course - 1
Swimming pool - 1
Movie theater - 1 indoor

Tourist Attraction

Little Shepherd of Kingdom Come - an outdoor theatre group

Area (Within 30 miles)

Jefferson National Forest
Kingdom Come State Park
Lilley Cornett Woods
Little Shepherd Trail

AGRICULTURE - NATURAL RESOURCES - CLIMATE

Agriculture*

	<u>Letcher County</u>	<u>Labor Market Area</u>
Total land area (acres)	216,960	1,463,616
Percent of area in farm land	4.8	4.4
Number of farms	83	576
Average size of farms (acres)	124.3	111.4
1969 value of all farm products	\$195,680	\$ 643,441
Value per farm	2,357	1,117
Total crop sales	9,623	143,299
Total livestock & livestock products	182,732	488,113
1970 agricultural production included:		
Corn (bu.)	14,000	70,000
Cattle and calves (number)	700	5,800
Hogs and pigs (number)	600	3,800

Natural Resources

Principal mineral resources	Coal, limestone, and petroleum
Other mineral resources	Natural gas
Acres of commercial forest land	182,200
Most abundant tree species	Red oak, white oak, yellow poplar, hickory, beech, soft and hard maple, blackgum

*U. S. Department of Commerce, Bureau of the Census, Census of Agriculture, 1969. U. S. Department of Agriculture and Kentucky Department of Agriculture, Kentucky Agricultural Statistics, 1971.

Climate*

Letcher County

Temperature

Annual mean (30-year record)	56.8 degrees
Average annual 1971	57.0 degrees
Record highest, July, 1970** (10-year record)	95.0 degrees
Record lowest, January, 1966 (10-year record)	- 15.0 degrees
Normal heating degree days (30-year record)	4, 143

(Heating degree day totals are the sums of
negative departures of average daily temperatures
from 65° F.)

Precipitation

Mean annual total (30-year record)	41.06 inches
Mean annual snow and sleet (34-year record)	16.70 inches
Total precipitation 1971	43.24 inches
Mean number days precipitation (.01 inch or more) (26-year record)	133
Average number days thunderstorms(28-year record)	46
Prevailing winds (9-year record)	West-southwest

*U. S. Department of Commerce, Environmental Science Services
Administration, Climatological Data, 1971. Station of Record: Bristol,
Johnson City and Kingsport, Tennessee.

**Also on earlier dates, months, or years.

HISTORY

Letcher County lies in Eastern Kentucky along the Virginia state line and covers 339 square miles. Its surface is mountainous and includes parts of such well-known mountains as Big Black and Pine, which form the backbone of the Cumberlands in the area. The soil is fertile in the valleys but is thin on the mountainsides. The headwaters of the Kentucky and Cumberland Rivers are in Letcher County, and Pine Mountain forms a watershed between these rivers. About 80 percent of the county is forested, and there are several deposits of coal, oil, and natural gas.

The first settlement in the area was made in 1804 by John Adams, a fur trader, near present-day Whitesburg. Soon other settlers established posts at the present sites of Neon and Jenkins, where they sought animal pelts in the Eastern Kentucky "home of bears" and farming land which would be safe from Indian raids. Among early hunters in the area had been Daniel Boone. Eventually the fur trading economy ended, and the people turned to farming and timber cutting for a living.

In 1842 Letcher became Kentucky's ninety-fifth county, taking its name from Robert P. Letcher, Governor of Kentucky at the time. Much of the area's history is chronicled by John Fox, Jr., whose writings on the Cumberlands, such as The Little Shepherd of Kingdom Come and A Knight of the Cumberlands, have gained widespread recognition.

Whitesburg, the county seat, was Letcher County's only chartered town until after the railroad came in 1912. It is named for C. White, a member of the State Legislature at the time of its founding.

The earliest recorded population figure for Letcher County was 2,512 in 1850. The county experienced a boom with the coming of the railroad in 1912. At that time timber cutting and logging was the chief industry and great quantities of logs were floated down the Kentucky and Cumberland Rivers to mills, from which lumber was shipped to many parts of the country. By 1950 the population was 39,522, with coal mining the major industry. Population declined sharply, however, to 30,102 in 1960 and 23,165 in 1970.

Agriculture accounted for only 100 of the county's 7,240 employed in 1971. Manufacturing employment that year was 200, with carbonated beverages, machine shop products and lumber the most important manufactured products. Largest of Letcher County's firms are: Royal Crown Bottling Company, Electric and Machine Company and Greene and Webb Lumber Company. Mining and quarrying accounted for 2,763 jobs in 1971.

Among prominent citizens of the county is Whitesburg attorney, Harry M. Caudill, noted author of Night Comes to the Cumberlands, a story of the area. Caudill has served several terms in the State Legislature.