

1971

# Industrial Resources: Marion County - Lebanon

Kentucky Library Research Collections  
Western Kentucky University, [spcol@wku.edu](mailto:spcol@wku.edu)

Follow this and additional works at: [https://digitalcommons.wku.edu/marion\\_cty](https://digitalcommons.wku.edu/marion_cty)

 Part of the [Business Administration, Management, and Operations Commons](#), [Growth and Development Commons](#), and the [Infrastructure Commons](#)

---

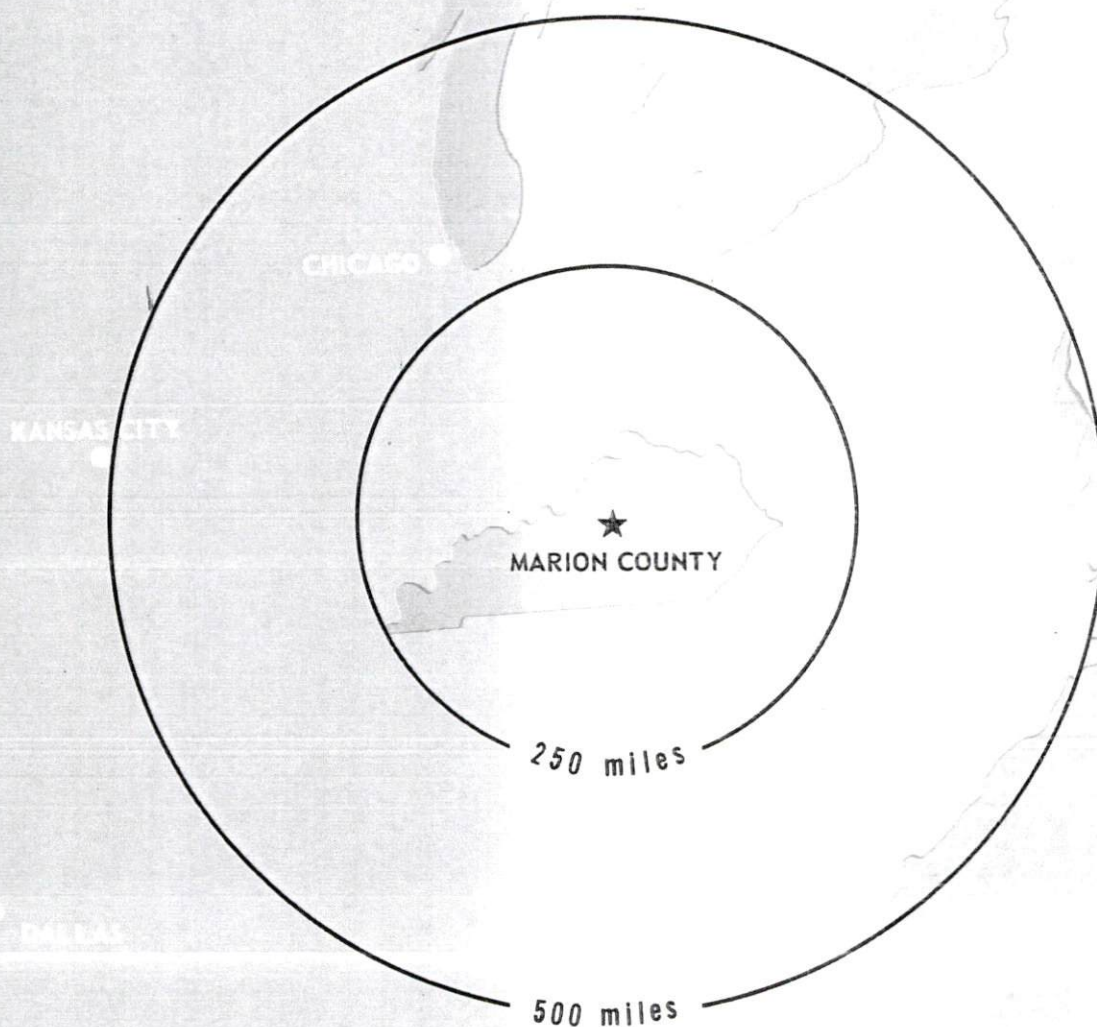
## Recommended Citation

Kentucky Library Research Collections, "Industrial Resources: Marion County - Lebanon" (1971). *Marion County*. Paper 13.  
[https://digitalcommons.wku.edu/marion\\_cty/13](https://digitalcommons.wku.edu/marion_cty/13)

This Report is brought to you for free and open access by TopSCHOLAR®. It has been accepted for inclusion in Marion County by an authorized administrator of TopSCHOLAR®. For more information, please contact [topscholar@wku.edu](mailto:topscholar@wku.edu).

# INDUSTRIAL RESOURCES

## ***MARION COUNTY KENTUCKY***



# CURRENT INDUSTRIAL RESOURCES

## CURRENT INDUSTRIAL RESOURCES, MARION, KENTUCKY

This is a 1971 supplement to "Industrial Resources, Marion, Kentucky" which was published in 1970.

### Population

	<u>1970</u>	<u>1960</u>
Marion	3,008	2,468
Crittenden County	8,493	8,648
Labor Market Area	63,994	63,455
(Includes Caldwell, Livingston, Lyon, Union, Webster, and Crittenden Counties.)		

### General Employment Characteristics

<u>Industry</u>	<u>Employment 1969</u>	
	<u>Crittenden County</u>	<u>Labor Market Area</u>
TOTAL	2,700	21,000
Agricultural	500	3,400
Nonagricultural	2,200	17,600
Manufacturing	600	3,236
Trade and Services	42	3,686
Government	300	2,050

### Manufacturing Employment

<u>Type Industry</u>	<u>Crittenden County</u>			<u>Labor Market Area</u>		
	<u>1970</u>	<u>1960</u>	<u>% Change</u>	<u>1970</u>	<u>1960</u>	<u>% Change</u>
TOTAL	515	266	+93.6	4,000	1,479	+ 170.5
Apparel, textiles, leather	0	0	--	581	597	- 2.7
Lumber & furniture	0	72	--	115	312	+ 63.1
Printing, publishing, paper	167	134	+24.6	386	306	+ 26.1
Chemicals, petroleum, coal, rubber	0	0	--	225	54	+ 316.7
Machinery & metal products	345	0	--	2,619	50	+5138.0
Other	3	60	-95.0	74	160	- 53.7

There are presently 11 manufacturing firms in Crittenden County. Major firms, employment, and year started operations:

<u>Firms</u>	<u>Employment</u>	<u>Year Started Operations</u>
Alexander Stone Co., Inc.	35	1946
Moore Business Forms, Inc.	162	1950
R. C. Owen Co.	90	1948
Potter & Brumfield	407	1959
Turner & Conyer Lumber Co., Inc.	42	1958

### Labor Supply

	<u>Crittenden County</u>			<u>Labor Market Area</u>		
	<u>Total</u>	<u>Male</u>	<u>Female</u>	<u>Total</u>	<u>Male</u>	<u>Female</u>
Current	893	407	486	5,447	2,316	3,131
Potential additions next five years	936	515	421	7,575	4,116	3,459

### Personal Income

Crittenden County, 1969: Total - \$17,845,000; Per Capita - \$2,270  
 1959: Total - \$ 7,804,000; Per Capita - \$ 948

### Education

The Crittenden County School System includes 1 high school with standard rating and 5 elementary schools.

Nearest Area Vocational School: Madisonville, 39 miles distant  
 Courses offered: Practical Nursing, Electronics (Communications), Auto Body Repair, Auto Mechanics, Carpentry, Drafting, Electricity, Machine Shop.

### Power and Fuel

<u>Electric Distributors</u>	<u>Source of Supply</u>	
Kentucky Utilities Company	Kentucky Utilities Company	
Henderson-Union Rural Electric Cooperative	Big Rivers Rural Electric Cooperative	
<u>Natural Gas Distributor</u>	<u>Specific Gravity</u>	<u>Btu Per Cu. Ft.</u>
Western Kentucky Gas Company	.60	1,000



## Water and Sewerage

Water: Daily treatment capacity - 600,000 gallons; average daily use - 360,000 gallons; maximum daily use - 370,000 gallons; storage capacity - 600,000 gallons; size distribution lines - 12, 8, 6, and 4 inches.

Sewerage: Type treatment - Aeration, clarifier; design capacity - 1,400,000 gallons per day or a population of 4,700; size of sewer mains - 18, 15, and 8 inches.

## Local Government

### Property Tax Rates

Property tax rates per \$100 of assessed valuation, 1970:

	<u>Marion</u>	<u>Crittenden County</u>
State	\$ .015	\$ .015
County	.188	.188
School	.385	.385
City	.288	
Total	\$ .876	\$ .588

### Police Protection

Number of law enforcement officers - 4 (Marion); 3 (Crittenden County).

Fire Protection: Number of full-time firemen - 2; number of volunteer firemen - 13; American Insurance Association fire rating, City of Marion, Class 7.

### Industrial Sites

The industrial sites shown in the 1970 Marion Industrial Resources brochure are still available for industrial use.

MARION COUNTY INDUSTRIAL SITES

1971

For additional information concerning the following Lebanon sites, contact Mr. T. E. Spragens, Jr., Lebanon, Kentucky 40033 or the Kentucky Department of Commerce, Frankfort, Kentucky 40601.

Lebanon

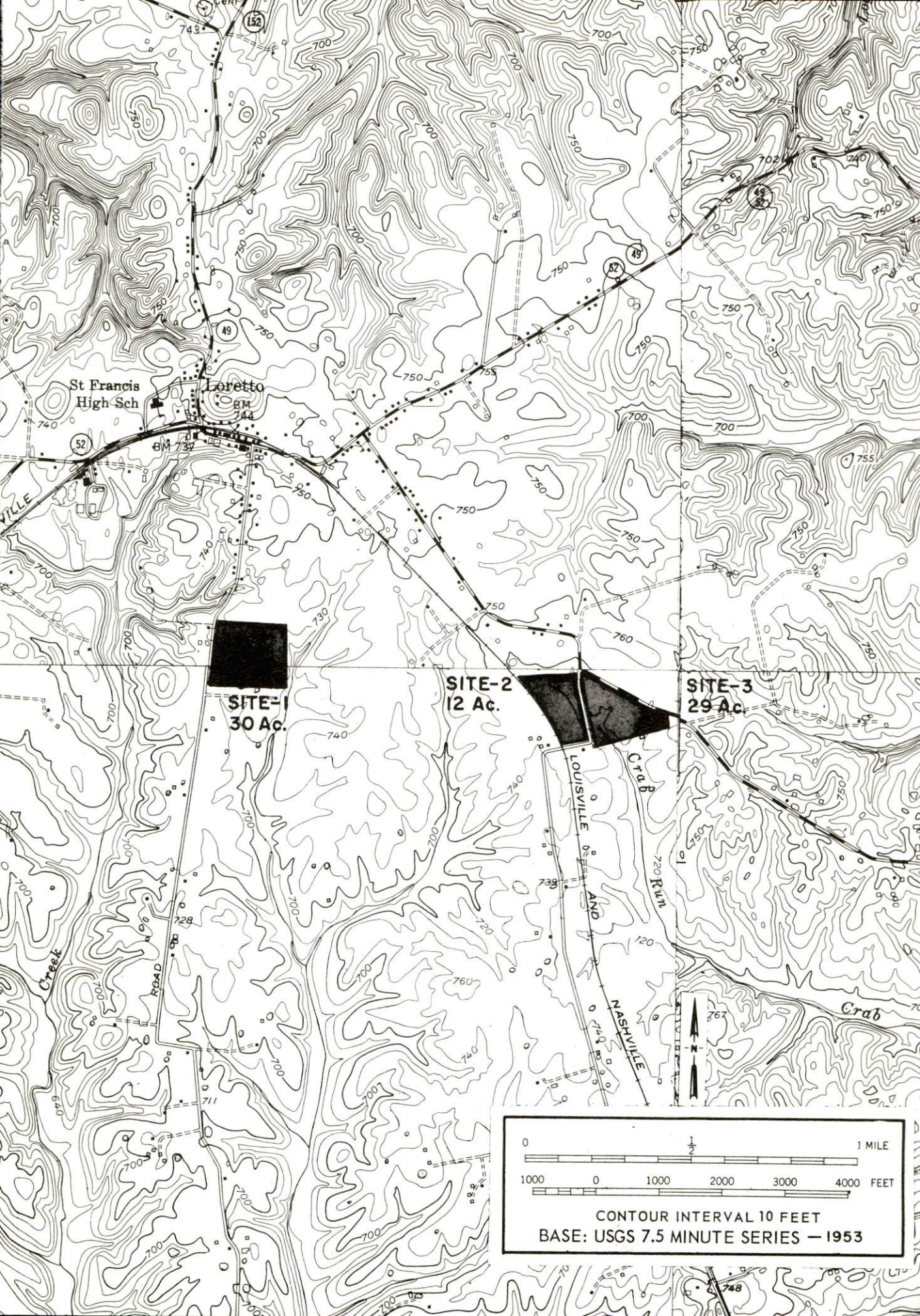
- SITE # 1: ACREAGE: 47.80 acres  
LOCATION: East Lebanon, within the city limits  
ZONING: Industrial  
HIGHWAY ACCESS: U. S. 68 borders site on north  
RAILROADS: Louisville & Nashville Railroad,  
rail spur to site  
WATER: Lebanon Water Works Company  
SIZE LINE: 8-inch on site  
GAS: Western Kentucky Gas Company  
SIZE MAIN: 4-inch line on northern boundary  
ELECTRICITY: Kentucky Utilities Company  
SEWERAGE: Lebanon Municipal Sewerage Company  
OPTIONED BY: Lebanon Industrial Committee
- SITE # 2: ACREAGE: 80 acres  
LOCATION: One-half mile west of Lebanon  
HIGHWAY ACCESS: Kentucky Route 49 borders site  
on north  
RAILROADS: Louisville & Nashville Railroad  
borders site on south  
WATER: Lebanon Water Works Company  
SIZE LINE: 8-inch line on site  
GAS: Western Kentucky Gas Company  
SIZE MAIN: 8-inch line, 800 feet from site  
ELECTRICITY: Kentucky Utilities Company  
SEWERAGE: Lebanon Municipal Sewerage System  
OWNERSHIP: Private
- SITE # 3: ACREAGE: 8.7 acres  
LOCATION: Southwest of Lebanon  
ZONING: Industrial  
HIGHWAY ACCESS: U. S. 68 on north border  
WATER: Lebanon Water Works Company  
SIZE LINE: 8-inch line on site  
GAS: Western Kentucky Gas Company  
SIZE MAIN: 4-inch line on site  
ELECTRICITY: Kentucky Utilities Company  
SEWERAGE: Lebanon Municipal Sewerage System  
OWNERSHIP: City of Lebanon
- SITE # 4: ACREAGE: 12 acres  
LOCATION: Northeast section of Lebanon  
ZONING: Industrial  
HIGHWAY ACCESS: Paved city street to U. S. 68  
RAILROADS: Louisville & Nashville Railroad,  
500 feet south of site  
WATER: Lebanon Water Works Company  
SIZE LINE: 6-inch line on western border  
GAS: Western Kentucky Gas Company  
SIZE MAIN: 4-inch line on southwest boundary  
ELECTRICITY: Kentucky Utilities Company  
SEWERAGE: Lebanon Municipal Sewerage System  
OWNERSHIP: Private

For further information concerning the following Loretto sites, contact Mr. Douglas Cambron, Loretto, Kentucky, or the Kentucky Department of Commerce, Frankfort, Kentucky.

Loretto

- SITE #1: ACREAGE: 30 acres  
LOCATION: Within south city limits  
ZONING: None  
HIGHWAY ACCESS: Paved county road along east boundary to Kentucky 52  
RAILROADS: Not rail served  
WATER: Marion County Water District  
SIZE LINE: 4-inch line adjacent to site  
GAS: Louisville Gas and Electric Company  
SIZE MAIN: 2-inch main adjacent to site  
ELECTRICITY: Kentucky Utilities Company or Inter-County RECC  
SEWERAGE: Package plant necessary  
OPTIONED BY: Western Marion County Industrial Committee
- SITE #2: ACREAGE: 12 acres  
LOCATION: Southeast of Loretto; one-quarter mile from city limits  
ZONING: None  
HIGHWAY ACCESS: Paved county road along east border to Kentucky 49  
RAILROADS: Louisville & Nashville Railroad along western boundary  
WATER: Marion County Water District  
SIZE LINE: 6-inch line adjacent to site  
GAS: Louisville Gas and Electric Company  
SIZE MAIN: 2-inch main, 200 feet north of site  
ELECTRICITY: Kentucky Utilities Company or Inter-County RECC  
SEWERAGE: Package plant necessary  
OPTIONED BY: Western Marion County Industrial Committee
- SITE #3: ACREAGE: 29 acres  
LOCATION: Southeast of Loretto, one-quarter mile from city limits  
ZONING: None  
HIGHWAY ACCESS: Kentucky 49 along northern boundary; paved county road along western boundary  
RAILROADS: Louisville & Nashville Railroad, 100 yards west of site  
WATER: Marion County Water District  
SIZE LINE: 6-inch line adjacent to site  
GAS: Louisville Gas and Electric Company  
SIZE MAIN: 2-inch main, 200 feet north of site  
ELECTRICITY: Kentucky Utilities Company or Inter-County RECC  
SEWERAGE: Package plant necessary  
OPTIONED BY: Western Marion County Industrial Committee

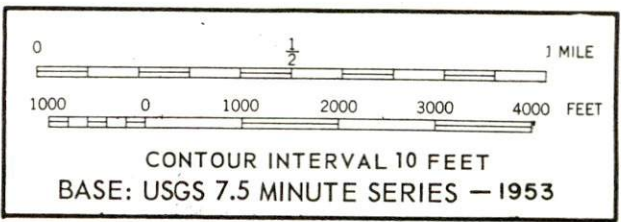




**SITE-1**  
30 Ac.

**SITE-2**  
12 Ac.

**SITE-3**  
29 Ac.







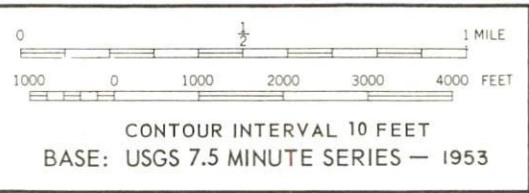
**SITE-2**  
89 Ac.

**SITE-4**  
12 Ac.

**SITE-1**  
47.80 Ac.

**SITE-3**  
8.7 Ac.

**LEBANON**  
(BM 797)





INDUSTRIAL RESOURCES  
MARION COUNTY, KENTUCKY

Prepared by  
The Kentucky Department of Commerce  
in cooperation with  
The Lebanon Chamber of Commerce  
and  
The City of Loretto  
1971

# TABLE OF CONTENTS

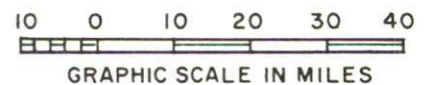
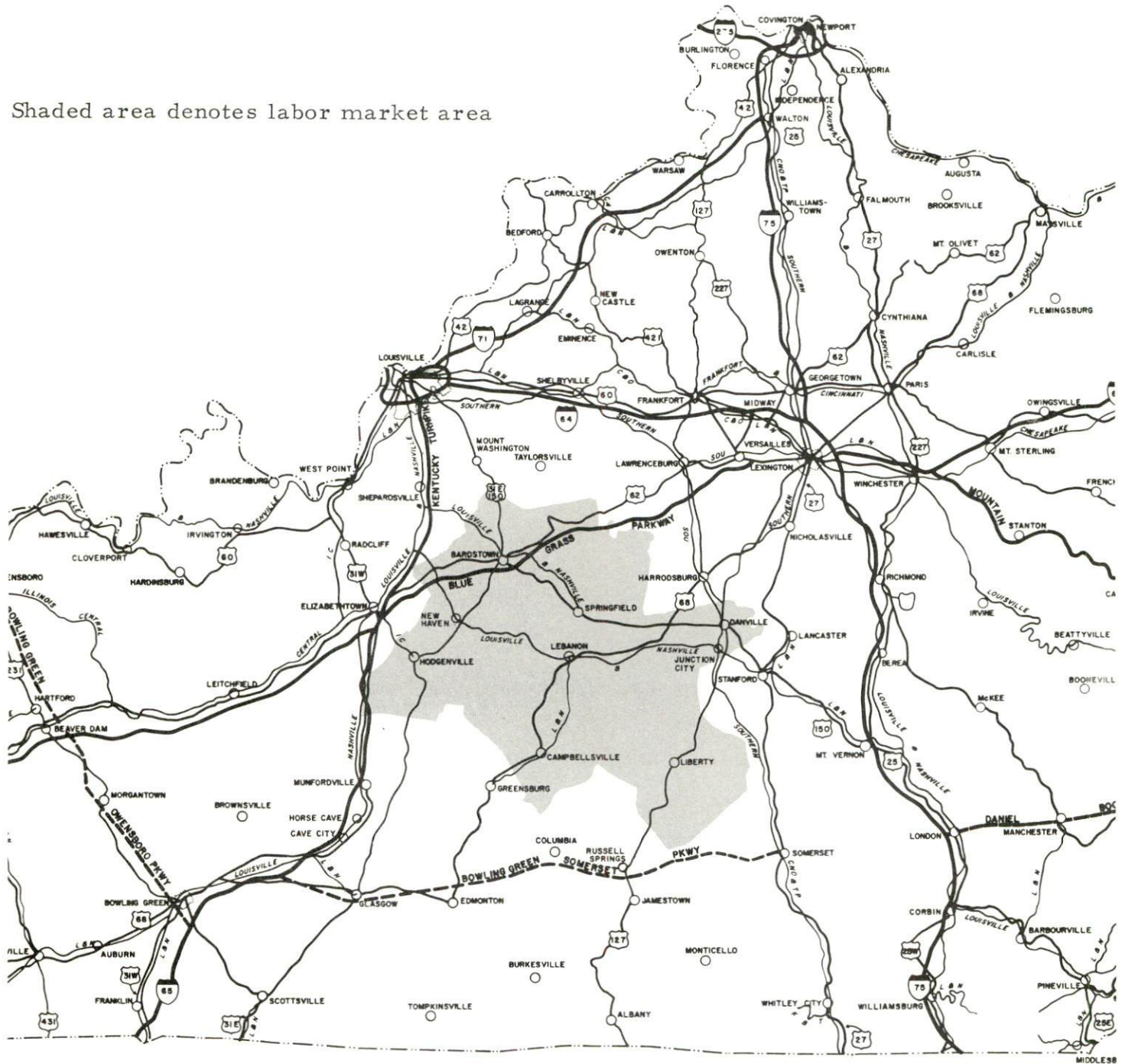
<u>Chapter</u>	<u>Page</u>
INDUSTRIAL SITES . . . . .	i
MARION COUNTY, KENTUCKY - A RESOURCE PROFILE . . . .	1
THE LABOR MARKET . . . . .	4
Population Trends . . . . .	4
General Employment Characteristics, 1969. . . . .	4
Manufacturing Employment Trends by Industry . . . . .	4
Major Marion County Manufacturing Firms, Their Products and Employment . . . . .	5
Wage Rates for Selected Occupations. . . . .	5
Labor Organizations . . . . .	7
Current and Future Labor Supply . . . . .	7
Total Personal Income . . . . .	7
Per Capita Personal Income . . . . .	7
EDUCATION . . . . .	9
Public Schools. . . . .	9
Parochial Schools . . . . .	9
Vocational Schools . . . . .	9
Colleges and Universities. . . . .	10
TRANSPORTATION . . . . .	11
Rail . . . . .	11
Truck Service . . . . .	11
Air. . . . .	12
Bus. . . . .	12
Taxi . . . . .	12
Rental Services . . . . .	12
POWER AND FUEL . . . . .	13
Electricity . . . . .	13
Natural Gas . . . . .	13
WATER AND SEWERAGE. . . . .	14
Water. . . . .	14
Sewerage . . . . .	15

<u>Chapter</u>	<u>Page</u>
LOCAL GOVERNMENT . . . . .	.16
City . . . . .	.16
County . . . . .	.16
Assessed Value of Property, 1970 . . . . .	.16
Local General Property Tax Rates Per \$100 of Assessed Valuation, 1970 . . . . .	.16
Planning and Zoning . . . . .	.17
Safety . . . . .	.17
Police . . . . .	.17
Fire . . . . .	.17
Rescue Service . . . . .	.17
Sanitation . . . . .	.18
HEALTH. . . . .	.19
Hospitals . . . . .	.19
Nursing Homes . . . . .	.19
Public Health. . . . .	.19
OTHER LOCAL FACILITIES . . . . .	.21
Communications . . . . .	.21
Library Services . . . . .	.21
Religious Institutions . . . . .	.22
Financial Institutions . . . . .	.22
Hotels and Motels . . . . .	.22
Clubs and Organizations . . . . .	.24
RECREATION . . . . .	.25
Local . . . . .	.25
Area. . . . .	.25
AGRICULTURE - NATURAL RESOURCES - CLIMATE . . . . .	.26
Agriculture . . . . .	.26
Natural Resources . . . . .	.26
Climate . . . . .	.26
HISTORY. . . . .	.27



# MARION COUNTY LABOR MARKET AREA

Shaded area denotes labor market area



## MARION COUNTY, KENTUCKY - A RESOURCE PROFILE

### Location

Marion County is located in the central part of Kentucky in the beautiful and productive Bluegrass Region. Lebanon, the county seat, is 60 miles southeast of Louisville and 65 miles southwest of Lexington.

The 1970 population of Lebanon was 5,528 and the population of Marion County was 16,714.

### The Economic Framework

Total employment in Marion County averaged 5,100 in 1969, with manufacturing providing 1,000 of these jobs. Since 1960, manufacturing employment has increased by 79 percent. The county's industrial employment is heaviest in machinery and metal products, lumber and furniture, and apparel industries.

Per capita personal income in the county in 1969 was \$2,170, an increase of \$1,270 since 1959.

In the Marion County labor market area, which includes Marion and its six surrounding counties, total employment in 1969 averaged 41,300. Manufacturing provided 10,660 jobs while agriculture provided 8,500. Area industrial employment is heaviest in apparel, textiles, and food and kindred products industries.

Despite important industrial gains in recent years, the area still has a deficit of 834 manufacturing jobs when measured against the national industrial employment-population ratio.

### Resources for Growth

1. There is a current estimated labor supply of 4,400 men and 3,390 women available for industrial jobs in the labor market area. In addition, 7,480 young men and 7,235 young women will have become 18 years of age by 1977 and potentially available for work.

2. Lebanon is served by U. S. Highway 68 and Kentucky Routes 55, 49, and 52. An interchange of the Blue Grass Parkway, which connects with major highway arteries, is located 23 miles north of Lebanon. The Louisville & Nashville Railroad serves both Lebanon and Loretto. Commercial air service is available at Louisville, 60 miles distant.



3. Natural gas service is provided by the Western Kentucky Gas Company at Lebanon and the Louisville Gas and Electric Company at Loretto. Electricity is provided in Lebanon and Loretto by the Kentucky Utilities Company. Marion County is served by Inter-County RECC.

4. Industrial sites - Marion County has seven available industrial sites.

5. There are four universities, five senior colleges, and five junior colleges within a 65-mile radius of Lebanon. The Marion County Vocational Extension Center, located in Lebanon, has increased the vocational educational opportunities.

### Community Programs for Improvement

#### Lebanon

Recent community improvements include: a new air-conditioned library; new bank; a new \$2.5 million Central High School; a \$67,000 grant for a hangar; service building, and office space at the airport; two banks remodeled; opening of two subdivisions; a parking lot; a new sewage treatment plant.

Planned: a shopping center; extension of gas service to two subdivisions; a new water district for Marion County; industrial park.

#### Loretto

Recent community improvements are: installation of fire hydrants; 2 fire trucks; a city park; a mobile home park; new street lights; a new water district; a new meat processing plant (under construction); several new stores.

Planned: new swimming pool; a county land fill; a new subdivision.

### Recreation, Entertainment, and Livability

The City of Lebanon sponsors a supervised recreation program during the summer months. Lebanon has two parks, four playgrounds, a swimming pool, tennis courts, baseball diamonds, basketball court, football field, two roller skating rinks, a civic center, and an indoor and an outdoor theater. The Lebanon Country Club has a clubhouse, swimming pool, and a 9-hole golf course.

The city maintains a 28-acre park which is being used by the Boy Scouts and Girl Scouts. This park is lighted and picnic tables are available.

Loretto also sponsors a supervised recreation program. One park, a playground, tennis court, basketball court, two baseball diamonds, a football field, a civic center, croquet and horseshoe courts are available. Citizens of Loretto may also enjoy membership at the country clubs located in Lebanon, Springfield, and Bardstown.

Further recreation diversity is found in the state parks and shrines located in the Marion County area.

Old Fort Harrod State Park is located in Harrodsburg, 31 miles from Lebanon. "The Legend of Daniel Boone," a drama about early Kentucky life, is performed in the park's amphitheater, from late June to Labor Day.

My Old Kentucky Home State Park, Bardstown, 29 miles from Lebanon, covers a 235-acre area with camping accommodations, gift shop, 9-hole golf course, picnic shelter and playground. "The Stephen Foster Story," an outdoor drama, is presented in the park's amphitheater during the summer months.

Lake Cumberland State Park, Jamestown, 60 miles south of Lebanon, is a resort park on Lake Cumberland. Covering an area of 3,000 acres, facilities include a lodge, cottages, camping facilities, dining room, coffee shop, gift shop, Olympic pool, resort pool, boat and motor rental, fishing, 9-hole golf course, tennis and playground.

Springfield, 8 miles from Lebanon, has a Lincoln Documents Collection housed in the Washington County Courthouse. Also located in Springfield is the Lincoln Homestead State Shrine.

The Abraham Lincoln Birthplace National Historic Site is located at Hodgenville, 24 miles from Loretto. Present grounds include 100 acres of original Thomas Lincoln farm where Abraham Lincoln was born and lived while a small boy. The log cabin is enclosed in a granite memorial shrine.

Perryville Battlefield State Shrine, located in Perryville, is only 21 miles from Lebanon. Confederate and Union monuments mark the site of Kentucky's greatest Civil War battle.

Green River Reservoir, 20 miles from Lebanon, impounds an 8,200-acre lake. Fishing, boating, swimming, and picnicking facilities are available.

Louisville, 60 miles distant, and Lexington, 65 miles distant, offer the full spectrum of sophisticated entertainment, cultural and sporting events.



# THE LABOR MARKET

## POPULATION TRENDS <sup>1/</sup>

Area	Population			Percent Change	
	1970	1960	1950	1960-70	1950-60
Lebanon	5,528	4,813	4,640	+14.9	+ 3.7
Loretto	985	NA	NA	-	-
Labor Market Area	112,779	112,438	111,847	+ 0.3	+ 0.5
Marion County	16,714	16,887	17,212	- 1.0	- 1.9
Boyle County	21,090	21,257	20,532	- 0.8	+ 3.5
Casey County	12,930	14,327	17,446	- 9.8	-17.9
Larue County	10,672	10,346	9,956	+ 3.2	+ 3.9
Nelson County	23,477	22,168	19,521	+ 5.9	+13.6
Taylor County	17,138	16,285	14,403	+ 5.2	+13.1
Washington County	10,728	11,168	12,777	- 3.9	-12.6

## GENERAL EMPLOYMENT CHARACTERISTICS, 1969 <sup>2/</sup>

Major Employment Group	Employment	
	Marion County	Labor Market Area
TOTAL	5,100	41,300
Agricultural	1,400	8,500
Nonagricultural	3,700	32,800
Manufacturing	1,000	10,661
Trade and Services	982	7,627
Government	500	4,250
Other	1,218	10,262

## MANUFACTURING EMPLOYMENT TRENDS BY INDUSTRY SEPTEMBER 1970 AND 1960 <sup>3/</sup>

Industry	Marion County			Labor Market Area		
	1970	1960	%Change	1970	1960	%Change
TOTAL	888	495	+ 79.4	10,331	6,150	+ 68.0
Food & Kindred Products	53	35	+ 51.4	1,281	1,399	- 8.4
Apparel, Textiles, Leather	215	242	- 11.2	5,393	3,225	+ 67.2
Lumber & Furniture	241	65	+270.8	943	611	+ 54.3
Printing, Publishing, Paper	11	8	+ 37.5	981	136	+ 621.3
Chemicals, Petroleum, Coal, Rubber	0	0	-	214	17	+1158.8
Stone, Clay & Glass	0	7	-	613	564	+ 8.7
Machinery & Metal Products	368	138	+166.7	809	164	+ 393.2
Other	0	0	-	97	34	+ 185.3

MAJOR MARION COUNTY MANUFACTURING FIRMS,  
THEIR PRODUCTS AND EMPLOYMENT <sup>4/</sup>

FIRM PRODUCTS AND EMPLOYMENT				
<u>Firm</u>	<u>Product</u>	<u>Employment</u>		
		<u>Total</u>	<u>Male</u>	<u>Female</u>
<u>Lebanon</u>				
Bourbon Cooperage Co.	White oak whisky barrels	183	180	3
Dayton Etched Products Corp.	Name plates, plaques, trim, metal decorative trim	275	145	130
Jane Sportswear Co.	Ladies' sportswear	207	27	180
Lebanon Oak Flooring Co.	Flooring, furniture dimension	43	41	2
Linda Sportswear	Ladies' sportswear blouses	119	6	113
Telecom, Inc.	Teaching laboratory equipment, switchboards	140	45	95
<u>Loretto</u>				
Star Hill Distillery Co.	Whisky, feed	48	27	21

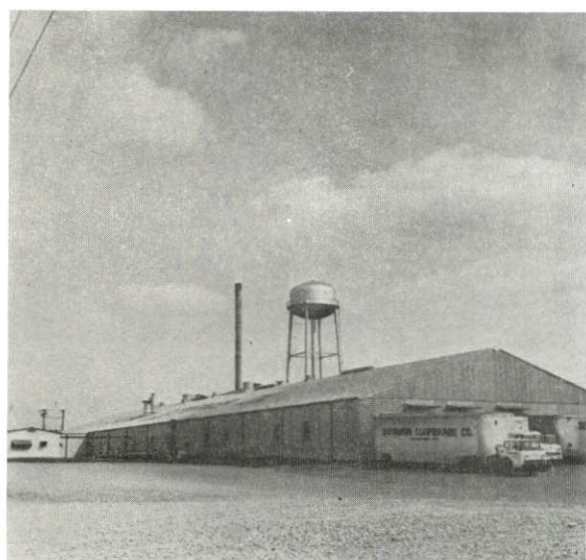
WAGE RATES FOR SELECTED OCCUPATIONS  
LEBANON, KENTUCKY <sup>5/</sup>

<u>Classification</u>	<u>Wages Per Hour</u>		
	<u>Starting</u>	<u>Maximum</u>	<u>Prevailing</u>
<u>Production Employees</u>			
Assembler	\$1.85	\$2.25	\$2.00
Inspector	1.90	2.30	2.05
Production Laborer	1.75	2.15	1.90
Welder, Arc or Acetylene (Class-A)	2.25	2.80	2.60
<u>Service Employees</u>			
Electrician (Class-A)	\$3.00	\$4.50	\$3.75
Laborer	1.70	2.10	1.85
Machinist	2.25	2.80	2.60
Mechanic, Maintenance	2.50	3.25	2.75
Truck Driver, Industrial (Class-A)	2.00	2.90	2.50
<u>Office Employees</u>			
Bookkeeper	\$2.50	\$3.25	\$2.90
File Clerk	1.75	2.15	1.95
Receptionist	1.75	2.15	1.95
Secretary	2.50	3.25	3.00
Typist	1.85	2.25	2.05





TELECOM, INC.



BOURBON COOPERAGE CO.



DEPCOR

# LABOR ORGANIZATIONS

<u>Union</u>	<u>Representing Workers at:</u>
Coopers International Union of North America	Bourbon Cooperage Co.
International Union of Ladies' Garment Workers	Linda Sportswear, Jane Sportswear Co.
International Woodworkers of America	Lebanon Oak Flooring Co.
International Union of Electrical Radio and Machine Workers, AFL-CIO	Telecom, Inc., Depcor

## CURRENT AND FUTURE LABOR SUPPLY - MARION COUNTY LABOR MARKET AREA

<u>Area</u>	<u>Current Labor Supply 1971 <sup>6/</sup></u>			<u>Future Labor Supply by 1977 <sup>7/</sup></u> <u>(Becoming 18 Years of Age)</u>		
	<u>Total</u>	<u>Male</u>	<u>Female</u>	<u>Total</u>	<u>Male</u>	<u>Female</u>
Labor Market Area	7,785	4,398	3,387	14,715	7,478	7,237
Marion	900	593	307	2,427	1,236	1,191
Boyle	803	503	300	2,400	1,212	1,188
Casey	1,875	1,102	773	1,689	878	811
Larue	632	365	267	1,396	715	681
Nelson	1,738	863	875	3,491	1,769	1,722
Taylor	704	399	305	1,949	975	974
Washington	1,133	573	560	1,363	693	670

## TOTAL PERSONAL INCOME <sup>8/</sup>

<u>Area</u>	<u>1969*</u>	<u>1959</u>	<u>%Change</u>
Marion County	\$ 34,398,000	\$ 14,412,000	+138.7
Labor Market Area	262,650,000	127,176,000	+106.5
Kentucky	9,202,000,000	4,655,000,000	+ 97.7

## PER CAPITA PERSONAL INCOME <sup>9/</sup>

<u>Area</u>	<u>1969*</u>	<u>1959</u>	<u>%Change</u>
Marion County	\$2,170	\$ 900	+141.1
Labor Market Area	\$1,540 to 2,950	\$690 to 1,555	NA
Kentucky	2,847	1,552	+ 83.4

\*Preliminary figure.





LEBANON HIGH SCHOOL



## EDUCATION

### Public Schools

#### Marion County

Total Enrollment	4,107
Elementary	2,071
Junior High	1,067
High School	969
Student-Teacher Ratio	27-1
Elementary	26-1
Junior High	30-1
High School	26-1
State Rating of High School	Standard
Percent High School Graduates to College	22.9
Current Expenditures Per Pupil	\$399.78
Bonded Indebtedness, June 1970	\$3,250,000

### Parochial Schools

Total Enrollment	692
Elementary	692
Student-Teacher Ratio	19-1
Elementary	19-1

### Vocational Schools

#### Nearest Extension Center

Location	Marion County Extension Center
	Lebanon
Curriculum	Accounting Jr. Management
	General Clerical
	Secretarial-Steno
	Auto Mechanics
	Carpentry
	Drafting
	Welding
	Blue Print Reading
	Night classes are available for adults.



### Nearest Area School

Jefferson County Area Vocational School  
Location Jeffersontown  
Miles Distant 60  
Curriculum Data Processing, General Clerical, Secretarial-Steno,  
Mechanics, Horticulture, Dental Assistant,  
Practical Nursing, Distributive Education,  
Electronics (Communications)  
Air Conditioning and Refrigeration, Appliance Repair,  
Auto Body Repair, Auto Mechanics, Commercial Foods,  
Drafting, Machine Shop, Office Machines Repair,  
Printing, Radio and TV Repair, Tool and Die Making

### Colleges and Universities

<u>Name</u>	<u>Area - Within 65 miles</u>		<u>Highest Degree Conferred</u>
	<u>Location</u>	<u>Enrollment</u>	
Campbellsville College	Campbellsville	914	Baccalaureate
Centre College	Danville	776	Baccalaureate
Eastern Kentucky University	Richmond	9,664	Masters
Berea College	Berea	1,399	Baccalaureate
Jefferson Community College	Louisville	2,557	Associate
Bellarmino-Ursuline College	Louisville	1,612	Baccalaureate
University of Louisville	Louisville	10,142	Ph.D., M.D., D.M.D., J.D.
Spalding College	Louisville	1,269	Masters
Lindsey Wilson Jr. College	Columbia	413	Associate
Elizabethtown Community College	Elizabethtown	632	Associate
Transylvania University	Lexington	859	Masters
University of Kentucky	Lexington	17,790	Ph.D., M.D., D.M.D., J.D.
Lexington Technical Institute	Lexington	110	Associate
St. Catharine Academy	Saint Catharine	173	Associate

## TRANSPORTATION

### Rail

Line serving Lebanon - Louisville & Nashville Railroad

Services - Switching, siding, freight, and REA Express. Piggyback service is available at Danville, 31 miles distant.

Line serving Loretto - Louisville & Nashville Railroad

Services - Siding, freight, and REA Express

### RAILWAY TRANSIT TIME FROM LEBANON, KENTUCKY, TO: 10/

City	No. of Days		City	No. of Days	
	CL			CL	
Atlanta, Ga.	2		Los Angeles, Calif.	5	
Birmingham, Ala.	2		Louisville, Ky.	1	
Chicago, Ill.	3		Nashville, Tenn.	2	
Cincinnati, Ohio	2		New Orleans, La.	3	
Cleveland, Ohio	3		New York, N. Y.	4	
Detroit, Mich.	4		Pittsburgh, Pa.	4	
Knoxville, Tenn.	2		St. Louis, Mo.	2	

### Truck Service

#### Lebanon

##### Company

##### Home Office

Best Way Express, Inc.	Nashville, Tennessee
Central Motor Express, Inc.	Campbellsville, Kentucky
McDuffee Motor Freight, Inc.	Lebanon, Kentucky
United Parcel Service	Louisville, Kentucky

#### Loretto

McDuffee Motor Freight, Inc.	Lebanon, Kentucky
------------------------------	-------------------



HIGHWAY MILES AND TRUCK TRANSIT TIME IN DAYS FROM  
LEBANON, KENTUCKY, TO SELECTED MARKET CENTERS

City	Highway Miles	Delivery Time <u>11</u> /		City	Highway Miles	Delivery Time	
		LTL	TL			LTL	TL
Atlanta, Ga.	370	3	1	Los Angeles, Calif.	2,193	5	3
Birmingham, Ala.	364	3	1	Louisville, Ky.	60	1	1
Chicago, Ill.	360	3	1	Nashville, Tenn.	160	1	1
Cincinnati, Ohio	150	3	1	New Orleans, La.	717	3	2
Cleveland, Ohio	384	3	1	New York, N. Y.	753	3	2
Detroit, Mich.	432	3	1	Pittsburgh, Pa.	461	3	2
Knoxville, Tenn.	216	3	1	St. Louis, Mo.	321	3	1

Air

	<u>Local</u>	<u>Nearest Commercial</u>
Location:	Lebanon-Springfield Airport 4 miles north of Lebanon	Standiford Field Louisville, 60 miles distant
Runways:	1 paved	3 paved
Length:	2,800 ft.	7,800 ft.; 5,000 ft.; 7,250 ft.
Traffic Control:	Wind sock	Control tower, approach control, ground control, guards, radar service, departure control
Lighting:		Runways, obstructions, beacon and approach lights, center line on runways
Services:		80, 100, 115 jet fuel; storage; major A & E repairs; TWA, American, Eastern, Delta, Piedmont, Ozark, and Allegheny Airlines; car rental; restaurant; taxi; city bus service

Bus Southern Greyhound Bus Line

Taxi Two companies, 24-hour service

Rental Services Truck and trailer

## POWER AND FUEL

### Electricity

Company serving Lebanon and Loretto - Kentucky Utilities Company

Source of power - Kentucky Utilities Company

Total generating capacity - 1,215,000 KW

Industrial rates furnished by - Kentucky Utilities Company, Industrial Development Department, Lexington, Kentucky

Company serving Marion County - Inter-County RECC

Source of power - East Kentucky Power Cooperative

Total generating capacity - 515,000 KW

Industrial rates furnished by - Inter-County RECC, Danville, Kentucky

### Natural Gas

Company serving Lebanon - Western Kentucky Gas Company

Source of supply - Tennessee Gas Transmission Corporation

Size of transmission lines - 24, 26, and 30 inches

Distribution lines - 6, 4, 2, 1 1/4, and 1 inches

BTU content - 1,020; Specific gravity - .587

Distribution pressure - winter 26 psi; summer 15 psi

Rates - will be furnished upon request from the Western Kentucky Gas Company, Owensboro, Kentucky

Company serving Loretto - Louisville Gas & Electric Company

Source of supply - Texas Gas Transmission Corporation

Size of transmission lines - 8-inch

Distribution lines - 4 and 2 inches

BTU content - 1,000; Specific gravity - .6

Distribution pressure - 35 psi

Rates - will be furnished upon request from the Louisville Gas and Electric Company, Louisville, Kentucky



## WATER AND SEWERAGE

### Water

Company serving Lebanon - Lebanon Water Works Company

Source - Rolling Fork River

Treatment plant capacity - 2,000,000 gpd

Average daily consumption - 760,000 gallons

Peak daily consumption - 920,000 gallons

Type treatment - chlorine, alum, lime, and fluoride

Storage capacity - 1,802,000 gallons; Average pressure - 78 psi

Size mains - 10, 8, and 6 inches

### MONTHLY WATER RATES FOR WHOLESALE AND INDUSTRIAL CONSUMERS

<u>Cubic Feet</u>	<u>Amount</u>	<u>Cubic Feet</u>	<u>Amount</u>
200	\$ 2.50	1,700 to 1,800	\$11.10
200 to 300	3.10	1,800 to 1,900	11.60
300 to 400	3.70	1,900 to 2,000	12.10
400 to 500	4.30	2,000 to 2,100	12.50
500 to 600	4.90	2,100 to 2,200	12.90
600 to 700	5.50	2,200 to 2,300	13.30
700 to 800	6.10	2,300 to 2,400	13.70
800 to 900	6.60	2,400 to 2,500	14.10
900 to 1,000	7.10	2,500 to 2,600	14.50
1,000 to 1,100	7.60	2,600 to 2,700	14.90
1,100 to 1,200	8.10	2,700 to 2,800	15.30
1,200 to 1,300	8.60	2,800 to 2,900	15.70
1,300 to 1,400	9.10	2,900 to 3,000	16.10
1,400 to 1,500	9.60		
1,500 to 1,600	10.10	Next 2,000 cu. ft., 40¢ per 100 cu. ft.	
		Next 10,000 cu. ft., 35¢ per 100 cu. ft.	
		All over 15,000 cu. ft., 25¢ per 100 cu. ft.	

Name of water district - Marion County Water District

Area served - Loretto

Date when water district began operating - October 1969

Source of supply of treated water - Lebanon Water Works Company

Amount of water which can be purchased in a 24-hour period - 200,000 gallons

Average amount of water used in a 24-hour period - 65,500 gallons

Peak amount of water used in a 24-hour period - 67,500 gallons

Storage facility - 75,000-gallon elevated tank  
Average pressure - 90 psi  
Size mains - 6 and 4 inches

Rates:

First	1,000 gals.	\$6.00(minimum)
Next	4,000 gals.	1.10 per M gals.
Next	5,000 gals.	1.00 per M gals.
Next	15,000 gals.	.85 per M gals.
Next	75,000 gals.	.70 per M gals.
Next	400,000 gals.	.50 per M gals.
All over	500,000 gals.	.40 per M gals.

Surface water sources - Rolling Fork of Salt River  
Average discharge - Rolling Fork near Lebanon 310 cfs (31 years, USGS)  
Expected ground water yield - small area in east central portion of county  
5 to 50 gpm; remainder of county 5 gpm or less

Sewerage

Company serving Lebanon - City of Lebanon  
Design capacity - 1,000,000 gpd  
Average daily flow - 500,000 to 600,000 gallons  
Treatment - secondary and polishing lagoon  
Type treatment - aeration, clarifier, drying beds  
Treated effluent discharged into - Hardins Creek  
Size of sanitary mains - 21 to 8 inches  
Size of storm mains - 4 x 5 feet down to 10 inches  
Rates - 48 percent of monthly water bill

Loretto - Septic tanks are utilized at this time.



## LOCAL GOVERNMENT

### City

#### Lebanon

Structure - Mayor - 4-year term; 6 councilmen - 2-year terms

Budget 1970 - General Fund \$267,000; General Fund \$59,400

Fees and licenses - Business license fees range from \$5 to \$400 annually.

#### Loretto

Structure - Board of Trustees Chairman - 2-year term; 5 members - 2-year terms

Budget 1971 - General Fund \$7,800

Fees and licenses - Occupational license fees range from \$5 to \$150 annually.

### County

Structure - County Judge - 4-year term; 8 magistrates - 4-year terms

Budget 1970-71 - General Fund \$102,871; Road Fund \$84,194

### Assessed Value of Property, 1970

<u>Classes of Property*</u>	<u>Lebanon</u>	<u>Loretto</u>	<u>Marion County</u>
Real Estate	\$25,803,873	\$2,461,072	\$70,804,263
Tangibles	1,074,990	254,808	17,151,221
Public Service	1,875,042	79,500	14,962,006 ('69)

### Local General Property Tax Rates Per \$100 of Assessed Valuation, 1970 <sup>12/</sup>

<u>Taxing Unit**</u>	<u>Lebanon</u>	<u>Loretto</u>	<u>Marion County</u>
State	\$ .015	\$ .015	\$ .015
County	.210	.210	.210
School	.475	.475	.475
City	.260	.160	
Total	\$ .960	\$ .860	\$ .700

\*Property assessed at 100 percent of fair value.

\*\*Manufacturing machinery, raw materials inventories and goods in process inventories are not subject to local tax. State rate is only \$0.15 per \$100.

## Planning and Zoning

Agency - Lebanon Planning and Zoning Commission

Plans completed - Comprehensive Plan, Subdivision Regulations, Zoning Ordinance, Neighborhood Analysis, Public Improvements Program, Capital Improvements Budget

Codes adopted - Building Code, Housing Code, Plumbing Code, Electric Code, Fire Code, Gas Code

## Safety

<u>Police</u>	<u>Lebanon</u>	<u>Loretto</u>	<u>Marion County</u>
Total staff	10	1	3
Radio-patrol cars	3	1	3
Other equipment	riot equipment		

## Fire

American Insurance

Association Fire Rating 7

Full-time staff 1

Volunteers 15 30 15

Equipment:

750 gpm pumpers 3 2 2 (available  
for county fires  
from Lebanon)

250 gpm pumper 1

## Rescue Service

Marion County Civil Defense

Number of volunteers - 100

Equipment - Emergency Broadcast, Civil Air Patrol, rescue truck, equipment for 200 emergency cases, 3 emergency generators, 2 stocked fall-out shelters

Personnel training - first aid, 2,000 trained in medical self-help, 25 Gieger counters with personnel to operate, warning system for tornado alert



Sanitation

	<u>Lebanon</u>	<u>Loretto</u>	<u>Marion County</u>
Type service	municipal	private	private
Cost:			
residential	\$2 monthly	\$2 monthly	contract
business	\$2 monthly	\$2 monthly	contract
Collection frequency:			
residential	weekly	weekly	when desired
business	daily	weekly	when desired
Trash pickup	when desired	when desired	when desired
Disposal method	land fill	land fill	land fill

## HEALTH

### Hospitals

<u>General Hospital</u>	<u>Location</u>	<u>Beds</u>
Mary Immaculate Hospital	Lebanon	79
General hospital facilities - 2 operating rooms, emergency room, X-ray, laboratory, coronary unit, recovery room, pathologist equipment		
Medical staff - 6 surgeons, 5 general practitioners, 4 pathologists, 2 surgical technicians, 5 laboratory technicians, 2 X-ray technicians, 1 EENT specialist, 12 registered nurses, 8 licensed practical nurses		

### Nursing Homes

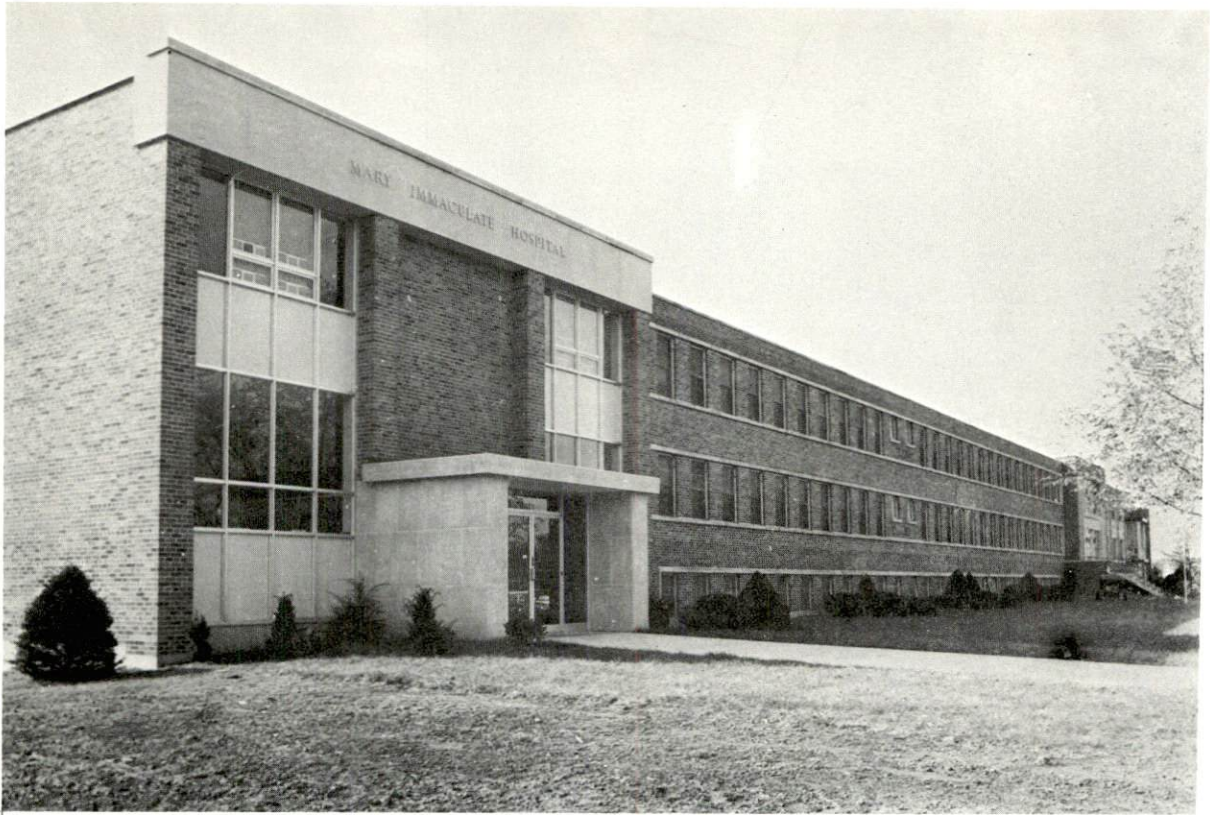
	<u>Number</u>	<u>Beds</u>
Extended care homes	1	38
Personal care homes	1	34

### Public Health

Facility - The Marion County Health Department

Staff - health officer, two nurses, clerk, sanitarian

Budget 1971-72 - \$56,177



MARY IMMACULATE HOSPITAL



MARION COUNTY HEALTH CENTER



## OTHER LOCAL FACILITIES

### Communications

	<u>Lebanon</u>	<u>Loretto</u>
Telephone - Services -	General Telephone Co. standard	General Telephone Co. standard
Telegraph - Services -	Western Union standard	Western Union toll free to Lebanon
Postal - U.S. Post Office		
Class -	first	third
Mail received -	twice daily	once daily
Mail dispatched -	twice daily	once daily
Newspapers -	The Lebanon Enterprise	
Weekly and circulation -	5, 500	
Other papers received from -	Louisville, Kentucky	Louisville, Kentucky
Radio -	WLBN	
Stations received from -	Louisville, Lexington, Campbellsville, and Danville, Kentucky; Nashville, Tennessee; Cincinnati, Ohio; Chicago, Illinois	Lebanon, Louisville, Lexington, Campbellsville, and Danville, Kentucky; Nashville, Tennessee; Cincinnati, Ohio; Chicago, Illinois
Television -		
Reception from -	Lexington and Louisville, Kentucky; Cincinnati, Ohio	Louisville and Lexington, Kentucky; Cincinnati, Ohio
Kentucky Educational Television -	Elizabethtown trans- mitter, Channel 23	Elizabethtown trans- mitter, Channel 23

### Library Services

Public Libraries - Marion County Library  
 Size collection - 14,846 volumes  
 Circulation, 1970-71 - 35,646  
 Services - magazines, records, pictures, story hour, meeting room,  
 films, projector, tapes, bookmobile

### Religious Institutions

	<u>Lebanon</u>	<u>Loretto</u>
Number of churches -	15	2
Denominations -	Baptist Catholic Christian Church of Christ Jehovah's Witnesses Methodist Presbyterian Latter Day Saints Wesleyan Methodist	Catholic

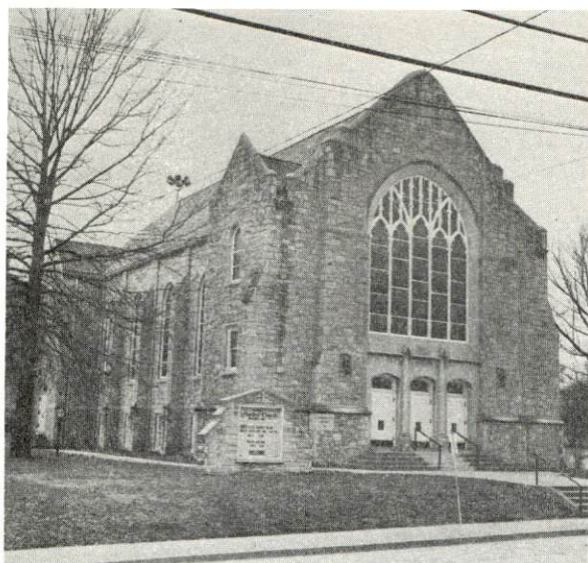
### Financial Institutions

<u>Bank</u>	<u>Statement as of December 31, 1970</u>	
	<u>Assets</u>	<u>Deposits</u>
<u>Lebanon</u>		
Marion National Bank	\$5,977,350.69	\$5,203,361.24
Citizens National Bank	6,120,493.59	5,454,402.06
Farmers National Bank	7,355,015.04	6,488,380.51
<u>Loretto</u>		
Bank of Loretto	\$3,453,628.66	\$3,142,305.08
<u>Savings and Loan Associations</u>	<u>Assets</u>	<u>Shared Accounts</u>
Marion County Savings & Building Association	\$3,997,896.69	\$1,030,318.47

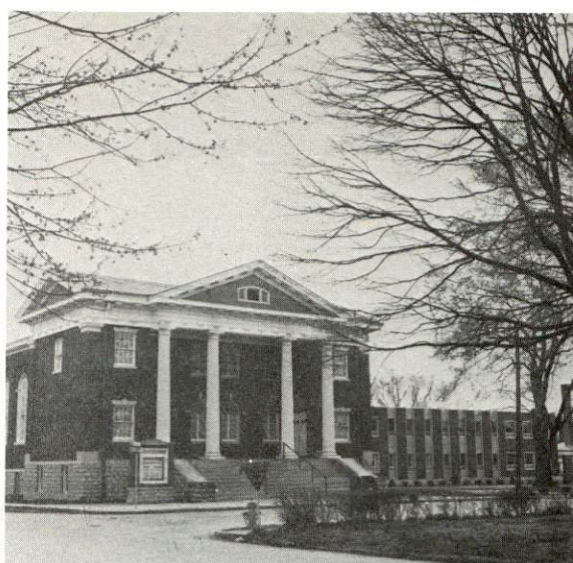
### Hotels and Motels

Number - 2  
Units - 45

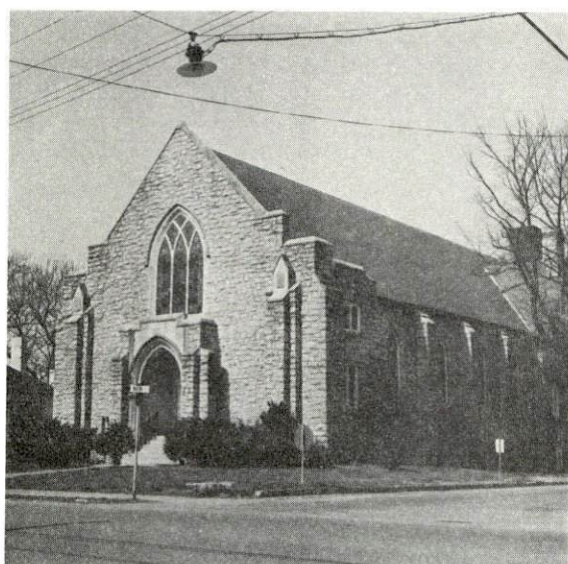




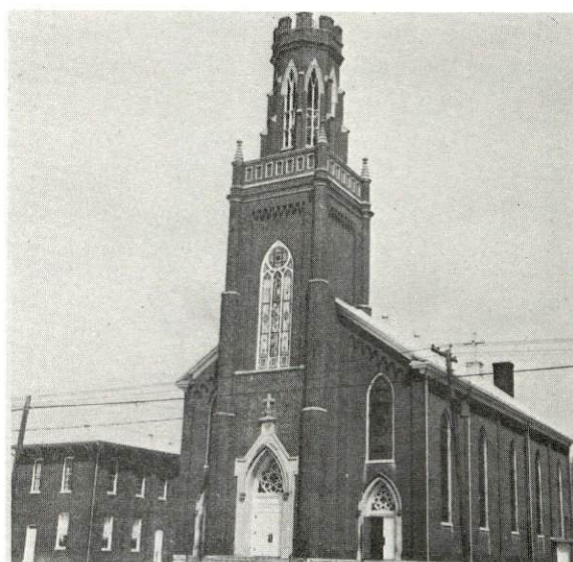
METHODIST CHURCH



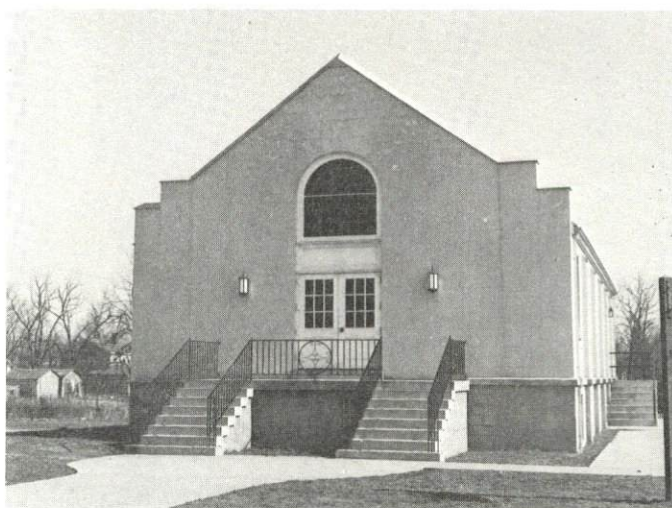
FIRST BAPTIST



PRESBYTERIAN CHURCH



ST. AUGUSTINE



CHURCH OF CHRIST



### Clubs and Organizations

Business and Civic - Chamber of Commerce, Junior Chamber of Commerce, Kiwanis, Rotary, Optimist, Medical Society, Dental Society, Red Cross, Community Greeting Service, Community Civic Club

Fraternal - American Legion, Masons, Knights of Columbus, VFW, Knights of Templar

Women's - VFW Auxiliary, American Legion Auxiliary, Woman's Club, Homemakers, Eastern Star, Business and Professional Women, Daughters of Isabella, Hospital Auxiliary

Youth - Boy Scouts, Cub Scouts, Girl Scouts, Brownies, FFA, FHA, 4-H, FTA, Beta Club, FBLA

Other - Sportsman Club, Saddle Club, Booster Club, Ministerial Association

## RECREATION

### Local

	<u>Lebanon</u>	<u>Loretto</u>
Public Recreation Facilities		
Supervised program -	Lebanon city park	Loretto city park
Parks -	2	1
Playgrounds -	4	1
Swimming pool -	1	
Tennis courts -	2	1
Baseball diamonds -	3	2
Football fields -	2	1
Other -	civic center, 2 skating rinks	civic center, horse shoe, croquet courts, basketball court
Private Recreation Facilities		
Country club -	1	membership at Lebanon, Springfield, Bardstown
Golf course -	1 (9-hole)	
Swimming pool -	1	
Movie theaters -	1 indoor, 1 outdoor	
Tourist Attractions		
St. Mary's College, first Catholic College for boys west of the Alleghenies		
Star Hill Distillery		

### Area (Within 35 miles)

Old Fort Harrod State Park  
 My Old Kentucky Home State Park  
 Green River Reservoir  
 Perryville Battlefield State Shrine  
 Abraham Lincoln Birthplace National Historic Site  
 Lincoln Homestead State Shrine

# AGRICULTURE - NATURAL RESOURCES - CLIMATE

## Agriculture 13/

	<u>Marion County</u>	<u>Labor Market Area</u>
Total land area (acres)	219,520	1,439,360
Percent of area in farm land	88.6	79.1
Number of farms	1,263	9,686
Average size of farms (acres)	154.0	117.6
1964 value of all farm products	\$ 7,273,891	\$ 45,944,850
Value per farm	5,759	4,743
Total crop sales	3,446,238	3,553,373
Total livestock & livestock products	3,819,003	23,287,998
1968 agricultural production included:		
Burley tobacco (lbs.)	3,266,000	31,468,000
Corn (bu.)	570,000	4,121,000
Cattle and calves (number)	39,000	237,900
Hogs and pigs (number)	21,000	99,400
Milk production (1967) (lbs.)	43,070,000	287,850,000

## Natural Resources

Principal mineral resources	Limestone
Other mineral resources	Sand and gravel, clay, dolomite, trace of petroleum
Acres of commercial forest land	82,200
Most abundant tree species	White oak, red oak, hickory, yellow poplar, beech, hard maple, and ash

## Climate 14/

	<u>Marion County</u>
Temperature	
Annual mean (30-year record)	55.6 degrees
Average annual 1970	54.5 degrees
Record highest July 1966+* (7-year record)	98 degrees
Record lowest January 1966+ (7-year record)	-10 degrees
Seasonal heating degree-days (30-year record)	4,683
Precipitation	
Mean annual total (30-year record)	44.73 inches
Mean annual snow and sleet (25-year record)	16.0 inches
Total precipitation 1969	39.5 inches
Mean number days precipitation (.01 inches or more)	
(26-year record)	129
Average number days thunderstorms (26-year record)	47
Prevailing winds (17-year record)	South

\*Also on earlier dates, months, or years.



## HISTORY

Marion County, situated in the central portion of the state, covers 343 square miles of territory. Its surface is generally rolling to level with a number of knobs. The Rolling Fork of the Salt River flows across the southern part of the county. Marion County is 847 feet above sea level.

The first settlers in Marion County came from Virginia and Maryland in 1788. The county was organized in 1834, Kentucky's eighty-fourth, and took its name from General Francis Marion, the famous "Swamp Fox" of the Revolutionary War. During the Civil War Marion County suffered enormously: three battles were fought at Lebanon. The people were divided in their allegiance, the majority of them in favor of the north.

Lebanon, the county seat, is so named because of the cedars in the vicinity. A thriving community of over 5,500, Lebanon recently won a Chamber of Commerce award as "the most progressive of all small towns in Kentucky."

At the time Marion County was established there were practically no roads, nor was any widespread network of roads constructed until the twentieth century. In 1840, its population of 11,032 depended for their survival largely on what they made themselves. The supply of manufactured goods was small, though local craftsmen produced such items as clothing, nails, bricks, and plows. Distilling in the area was well advanced, and almost every farmer had a stillhouse where whisky was made. The surplus was floated down the Salt River to the Ohio, and on to international markets. In 1857, the county's economy was given a tremendous boost with the coming of the Louisville & Nashville Railroad. Population then began its growth to a high of 17,212 for the county in 1950. There has been a slight decline since then to 16,887 in 1960, and then to 16,714 in 1970.

In 1969, 1,400 jobs were agricultural. Products of the area are corn, hay, tobacco, cattle, and hogs. Lebanon has one of the state's top tobacco markets as well as new stockyards where a large quantity of livestock is sold. Although the county's economy has been primarily agricultural, a transition is evident. Manufacturing employment in 1969 totalled 927, up over 150 percent since 1959. Machinery and metal products, lumber and furniture, and apparel are the most important manufactured products of the county. Largest of Marion County's 14 manufacturing firms are: Dayton Etched Products Corporation; Jane Sportswear Company; Bourbon Cooperage Company, which makes white oak whisky barrels; Linda Sportswear; and Lebanon Oak Flooring Company.

Distinguished citizens of Marion County have included James Proctor Knott, a Kentucky Governor who was a member of the Constitutional Convention which wrote Kentucky's present Constitution. A. S. Hill and Frank Chelf, also from Marion County, served in the United States Congress, the latter for more than twenty years.

## SOURCES OF INFORMATION

- 1/ U.S. Department of Commerce, Bureau of the Census, Census of Population, 1950, 1960, 1970.
- 2/ Kentucky Department of Economic Security, Division of Research and Statistics.
- 3/ Kentucky Department of Economic Security, Number of Workers in Manufacturing Industries Covered by Kentucky Unemployment Insurance Law Classified by Industry and County, September 1970, September 1960.
- 4/ Kentucky Department of Commerce, 1971 Kentucky Directory of Manufacturers.
- 5/ Kentucky Department of Economic Security, Division of Employment Services, Danville Office.
- 6/ Kentucky Department of Economic Security, Kentucky Labor Supply Estimates by County, January 1971.
- 7/ Kentucky Department of Commerce, Future Labor Supply by 1977.
- 8/ University of Kentucky, Office of Development Services and Business Research, Total Personal Income for Kentucky.
- 9/ University of Kentucky, Office of Development Services and Business Research, Per Capita Income in Kentucky.
- 10/ Louisville & Nashville Railroad, Louisville, Kentucky.
- 11/ Central Motor Express, Inc., Campbellsville, Kentucky.
- 12/ Kentucky Department of Revenue, Kentucky Property Tax Rates 1970.
- 13/ U.S. Department of Commerce, Bureau of the Census, Census of Agriculture, 1964. U.S. Department of Agriculture and Kentucky Department of Agriculture, Kentucky Agricultural Statistics, 1969.
- 14/ U.S. Department of Commerce, Environmental Science Services Administration, Climatological Data, 1970.

All other information was obtained from governmental offices, local businesses and organizations.