

1967

Industrial Resources: Mercer County

Kentucky Library Research Collections
Western Kentucky University, spcol@wku.edu

Follow this and additional works at: https://digitalcommons.wku.edu/mercer_cty



Part of the [Business Administration, Management, and Operations Commons](#), [Growth and Development Commons](#), and the [Infrastructure Commons](#)

Recommended Citation

Kentucky Library Research Collections, "Industrial Resources: Mercer County" (1967). *Mercer County*. Paper 19.
https://digitalcommons.wku.edu/mercer_cty/19

This Report is brought to you for free and open access by TopSCHOLAR®. It has been accepted for inclusion in Mercer County by an authorized administrator of TopSCHOLAR®. For more information, please contact topscholar@wku.edu.

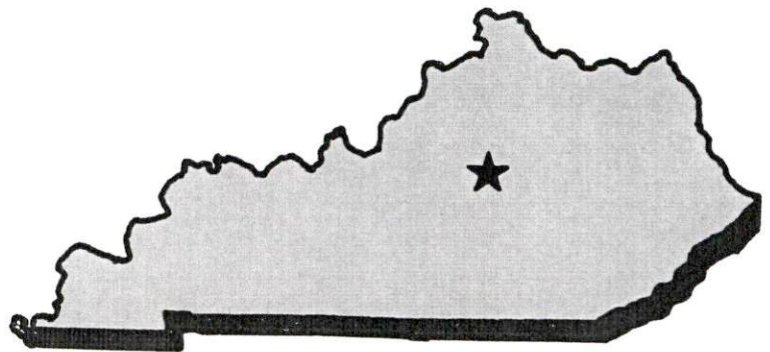


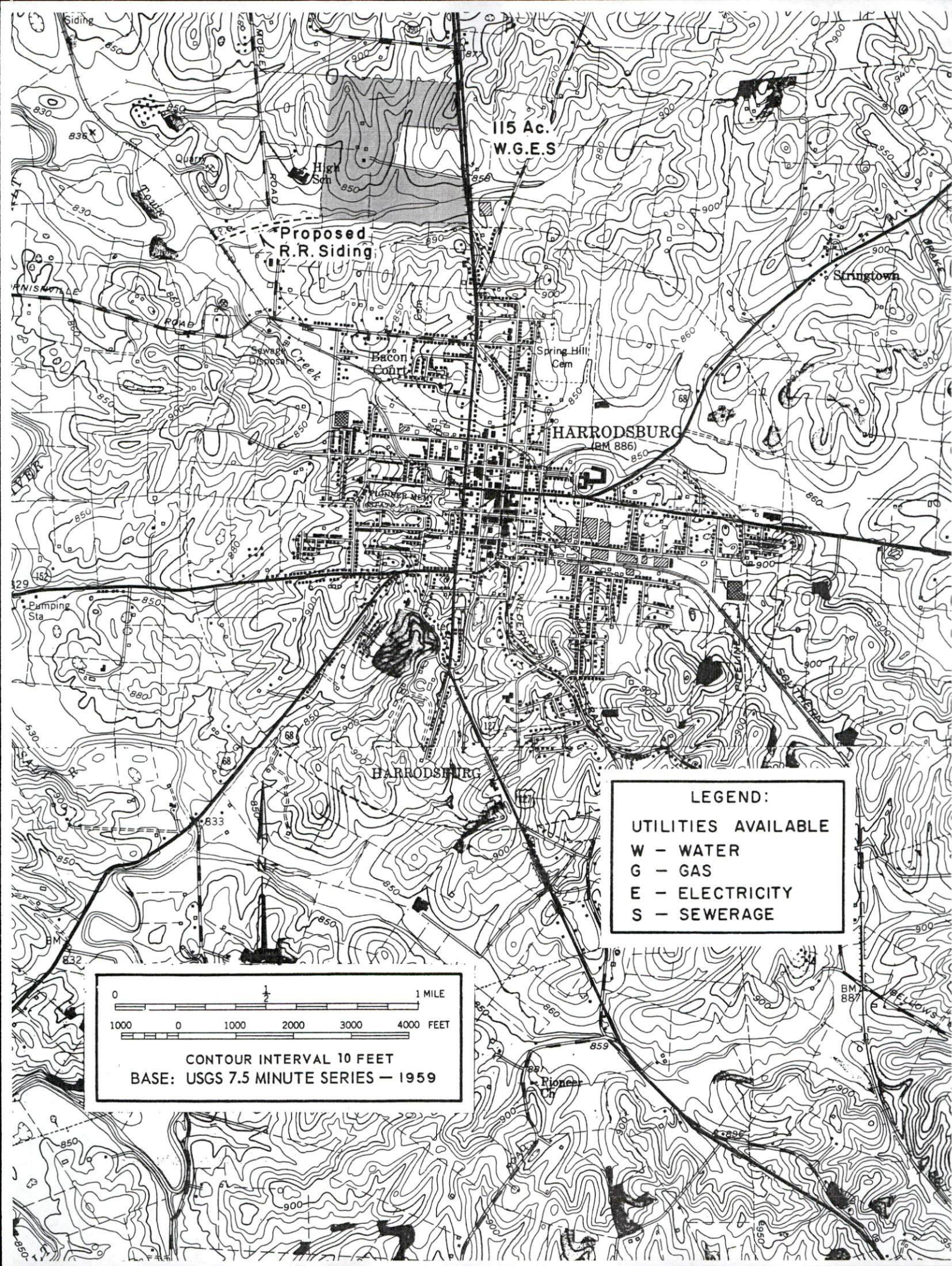
YOUR GUIDE TO A

KENTUCKY INDUSTRIAL SITE

Kentucky Library WKU

MERCER CO.
HAS THE
LOCATION





115 Ac.
W.G.E.S

Proposed
R.R. Siding

Bacon Court

HARRODSBURG
(BM 886)

HARRODSBURG

LEGEND:
UTILITIES AVAILABLE
W - WATER
G - GAS
E - ELECTRICITY
S - SEWERAGE

0 1/2 1 MILE
1000 0 1000 2000 3000 4000 FEET

CONTOUR INTERVAL 10 FEET
BASE: USGS 7.5 MINUTE SERIES - 1959

Together
We
Go Forward

Mercer Industrial Development Corporation

HARRODSBURG, KENTUCKY

TO WHOM IT MAY CONCERN:

The officers and directors of the Mercer Industrial Development Corporation extend their warmest welcome to industrialists and their consultants on behalf of the citizens of Mercer County. It will be our pleasure to meet or correspond with any prospect who might be interested in our area.

We feel that our newly acquired 115-acre Industrial Park offers the best physical location in the state. This, combined with the ample industrial resources of our area, allows us to offer industry everything it needs for a successful, profitable location.

In the event any industry should be interested in our community, we have, on constant stand-by, an informed "prospect team" of specialists who will be happy to discuss details of our community resources, construction, financing, utilities, etc.

Hoping for the opportunity to serve, we remain

Very truly yours,

MERCER INDUSTRIAL
DEVELOPMENT CORP.

Gene C. Royalty, Chairman

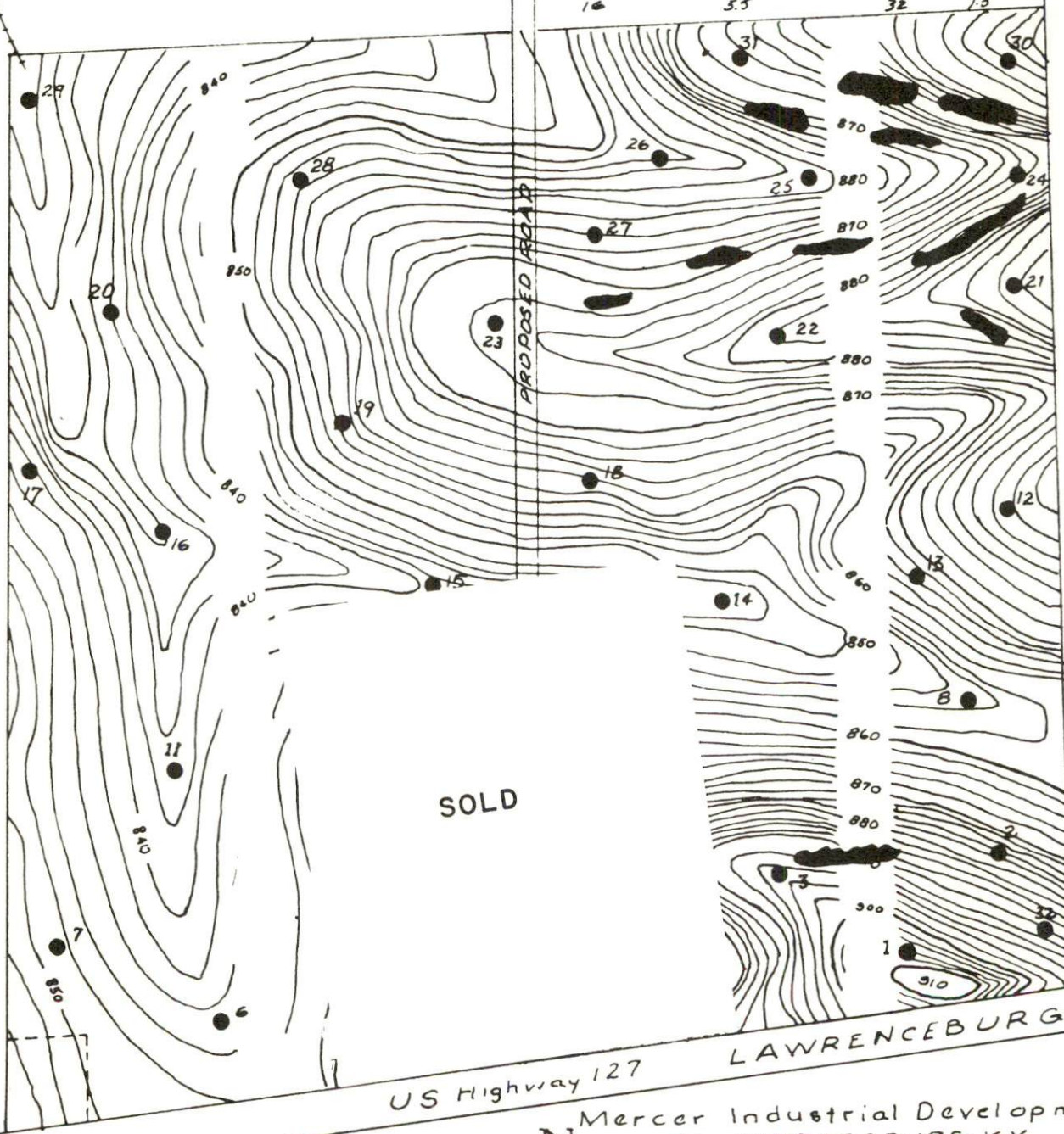
MOBERLY ROAD

MERCER COUNTY
HIGH SCHOOL



RESULTS OF ROCK SOUNDINGS

BORING NO	DEPTH TO REFUSAL (FT)		
1	14.9	17	34
2	6.0	18	4.0
3	8.0	19	2.5
4	4.5	20	9.0
5	1.1	21	2.2
6	4.6	22	2.9
7	3.3	23	6.0
8	4.2	24	1.5
9	1.3	25	1.9
10	2.6	26	5.7
11	6.7	27	2.0
12	2.5	28	3.4
13	3.0	29	5.2
14	6.7	30	5.0
15	4.1	31	3.4
16	5.5	32	1.5



Location of Soundings
Rock Outcrop

US Highway 127

LAWRENCEBURG

N

Mercer Industrial Development Cor
HARRODSBURG KY.

SCALE 1" = 400'

SITE INFORMATION

The Mercer Industrial Development Corporation site includes 115 acres of level to gently rolling land. The site is located adjacent to the northern city boundary of Harrodsburg, on U. S. 127.

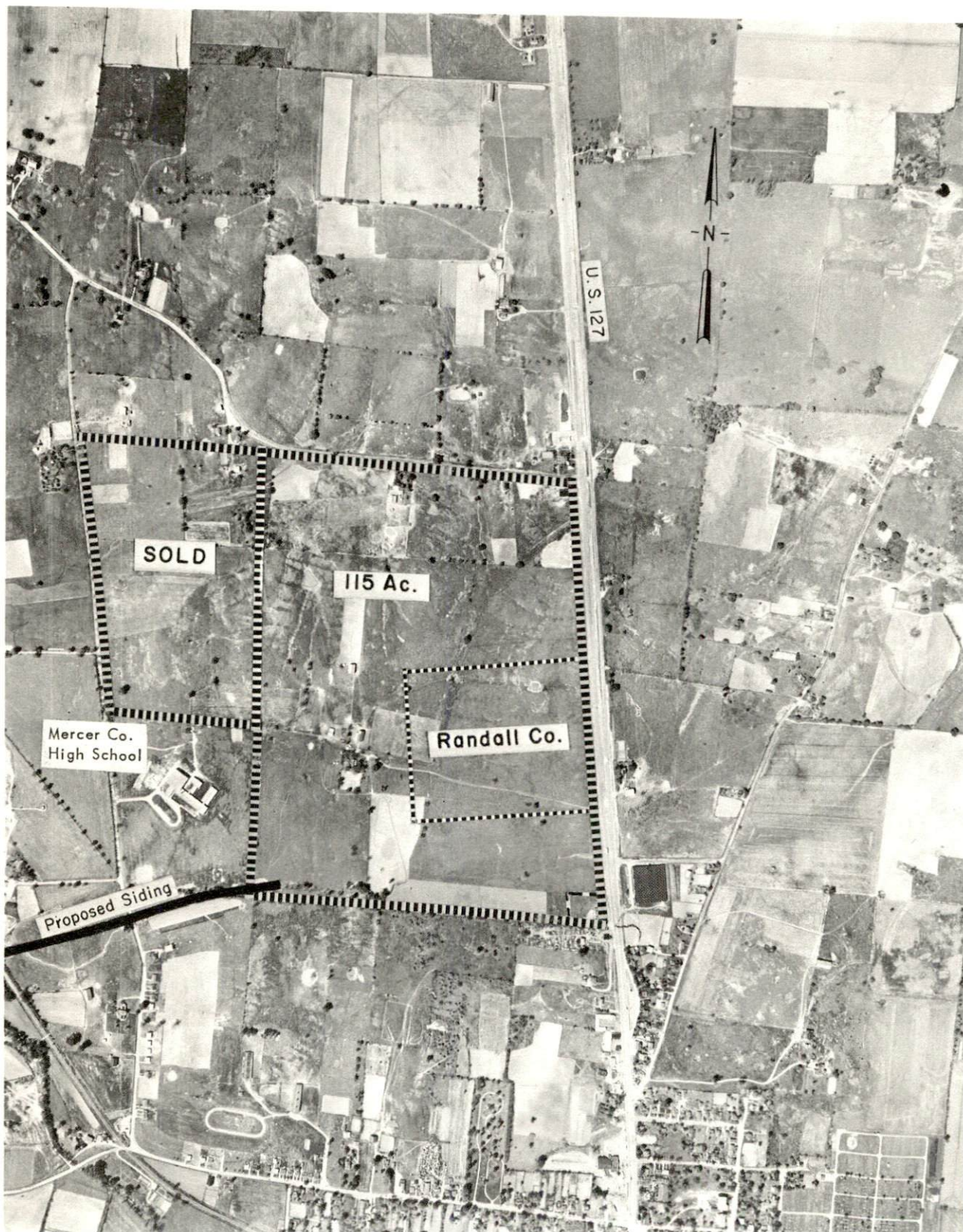
Preliminary engineering has been completed by John A. Stokley and Associates, 108 Stone Road, Lexington, Kentucky.

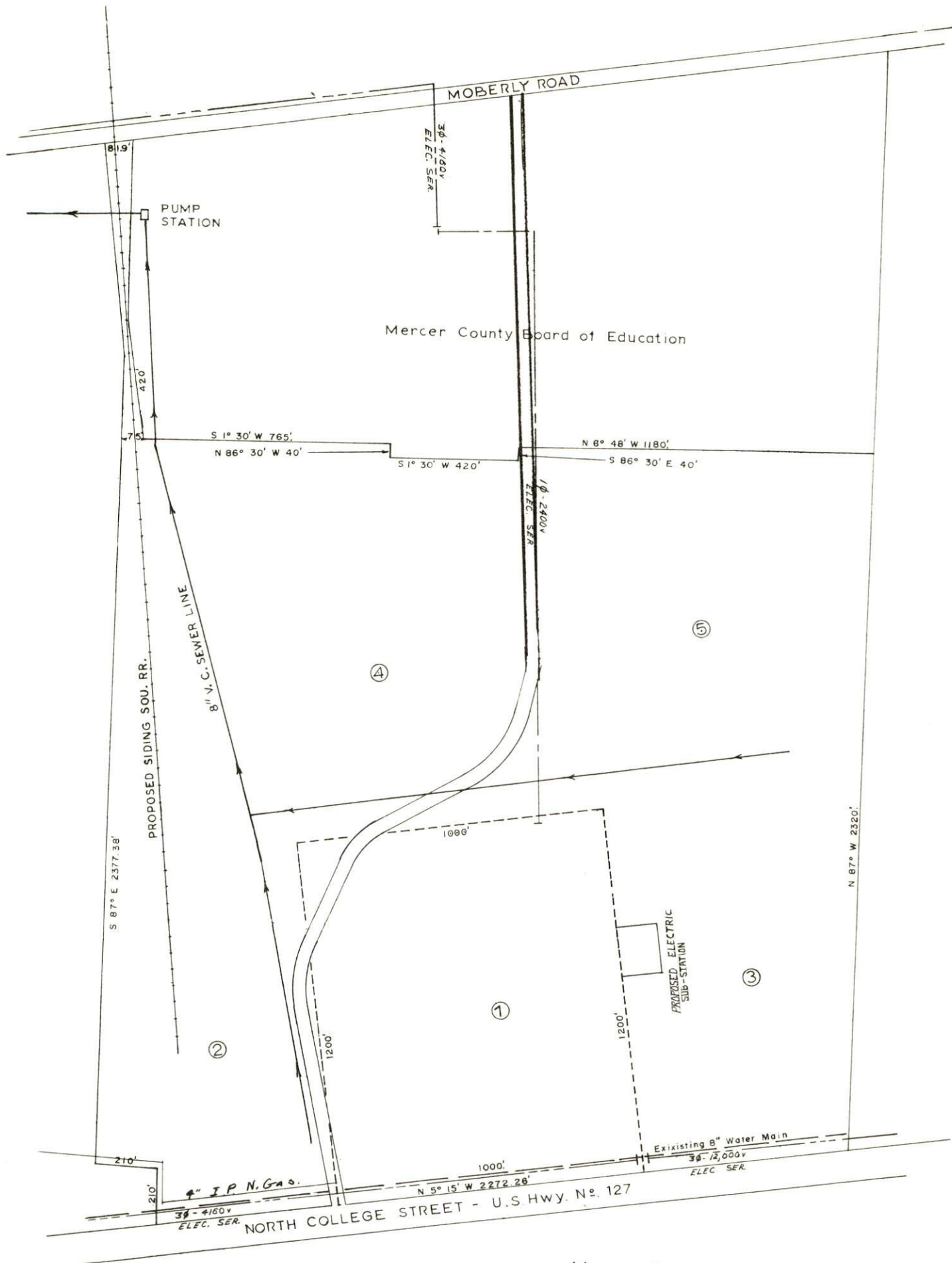
A contour map 400 feet to one inch with two foot contour intervals is available from the Mercer Industrial Development Corporation.

Rock soundings made by John A. Stokley and Associates indicate ready adaptability to grading and landscaping. Findings are related on the map on the opposite page.

Water, sewerage, gas, and electricity are available at the site. City sewerage line will be extended to the site and will be available in the Fall of 1967.

Site development is under the direction of the Mercer Industrial Development Corporation, a nonprofit organization. Sites will be sold at cost. Specific price quotations will be made upon request.





Mercer Industrial Development Corp.
 HARRODSBURG KY.
 SCALE 1" = 200' APRIL 1967

HARRODSBURG, KENTUCKY

POPULATION:

The current population of Harrodsburg is 6,600, which is about a 7 percent increase over the 1960 census figure of 6,061.

Mercer County, a largely rural area, has had a slightly higher natural increase over out-migration, resulting in a population increase of approximately 350 people since the 1960 census. 1960 census figures showed Mercer County's population at 14,596; 1967 approximation is 15,150.

LABOR:

The Harrodsburg labor supply area consists of Mercer, Anderson, Boyle, Garrard, Jessamine, Washington, and Woodford Counties. Area population was 90,924 in 1960. At present, there are approximately 1,236 persons employed in manufacturing in Mercer County.

Fantus Research, Inc., estimated in November, 1966, that there were 2,650 to 3,350 males and 1,700 to 2,400 females in the area between the ages of 18 and 45 who are recruitable for manufacturing jobs.

Future area labor supply will include 4,437 boys and 4,383 girls who will become 18 years of age by 1973.

INCOME:

The 1960 census showed that approximately 43 percent of Mercer County families had an income of \$3,000 per year or less. Median family income for the U.S. was \$5,660, for Kentucky \$4,051, and for Mercer County \$3,535. The median income for male workers alone in Mercer County was \$2,169 and for female workers was \$996. In 1963, Mercer County ranked 25th in the state with a per capita income of \$1,767. In 1966, per capita income for Kentucky was \$2,205.

TRANSPORTATION:

Railroads: Harrodsburg is located on a main line of the Southern Railway from Danville to St. Louis. It connects with the main line of the Southern Railway System (CNO & TP) 2 miles north of Danville, Kentucky. Passenger service is available at Danville, 9 miles from Harrodsburg. There is one local freight and eight through freights daily. Outbound shipments average 20 carloads monthly and include cheese, glass, hay, and tobacco. Inbound carloads average 35 monthly consisting of fertilizer, roofing, coal, and lumber. Railway Express provides pickup and delivery service. Switching service is available 6 days a week and sidings are available to accommodate 46 cars.

Highways: Harrodsburg and Mercer County are served by U. S. Routes 68 and 127 and Kentucky Highways 33, 152, 390, and 1160. An interchange of the Bluegrass Parkway is located just 16 miles from Harrodsburg. The Bluegrass Parkway connects to the nationwide Interstate Highway System at Elizabethtown and Lexington, Kentucky.

Bus Lines: Harrodsburg is served by the Southern Greyhound Bus Lines and the Trailway Bus Line. Southern Greyhound Lines has six northbound and six southbound buses daily. Trailway Bus Line, operating between Knoxville, Tennessee, and Cincinnati, Ohio, has eight buses daily, three northbound and five southbound.

Air: The Harrodsburg-Mercer County Airport, located 2 miles north of Harrodsburg, has a lighted 3,000 by 130-foot turf runway. Goodall Field, a Class-I airport, is located in Danville, 9 miles from Harrodsburg, and has a 2,400 by 72-foot paved runway. General aviation maintenance service and flight instruction is available.

The nearest major airport is Blue Grass Field, located in Lexington, 35 miles from Harrodsburg. There are three paved runways: 5,500 by 150 feet, 3,500 by 150 feet, and 3,500 by 150 feet. Lighting consists of a beacon, high intensity runway, obstruction, and approach lights. A total of 25 daily flights are provided by Eastern, Piedmont, and Delta Airlines.

Truck Service: The following trucking firms serve Harrodsburg:

<u>Company</u>	<u>Home Office</u>	<u>Type Service</u>
Davenport's Transfer	Harrodsburg, Kentucky	Interstate and Intrastate
Lawrenceburg Transfer Company	Lawrenceburg, Kentucky	Interstate and Intrastate
McDuffee Motor Freight, Inc.	Lebanon, Kentucky	Interstate and Intrastate
McLean Trucking Company	Winston-Salem, North Carolina	Interstate and Intrastate
North Tennessee Freight Lines, Inc.	Nashville, Tennessee	Interstate and Intrastate
Huber & Huber Motor Express, Inc.	Louisville, Kentucky	Interstate and Intrastate
Sanders & Leigh	Liberty, Kentucky	Interstate
Sutton Transfer, Inc.	Lexington, Kentucky	Interstate and Intrastate

UTILITIES:

Electricity: Harrodsburg is supplied electricity by the Kentucky Utilities Company with a 33,000 volt, two-way feed transmission line. Kentucky Utilities Company provides electric service in 78 Kentucky counties. The Company has a generating capacity of 740,000 KW in its five generating stations which are located in eastern, central, and western Kentucky. The Company also has major interconnections with its neighboring utilities. These interconnections provide a means of interchanging substantial blocks of electricity when desired.

Just recently the Company announced a statewide decrease in rates which affects both industrial and residential customers. Also, construction is expected to begin very soon on an ultra-modern extension of the E. W. Brown plant near Harrodsburg. When this extension is completed, the Company will have a generating capacity of over 1,000,000 KW.

Rates for industry will be furnished by the Company's Industrial Development Department in Lexington, Kentucky.

Natural Gas: Natural gas is supplied to Harrodsburg by the Western Kentucky Gas Company, whose source of supply is the Tennessee Gas Transmission Company. Distribution lines are 2, 3, 4, and 6 inches in size and are connected with a 24-inch and 26-inch transmission line located 10 miles south of Harrodsburg. The BTU content is 1040 per cubic foot and the specific gravity is .60.

Rates will be supplied by the Western Kentucky Gas Company's Industrial Development Department, Owensboro, Kentucky.

Public Water Supply: Harrodsburg is supplied water by the Harrodsburg Municipal Water Works, whose source is the Kentucky River. The capacity of the treatment plant is 1,500,000 gpd. The peak daily demand has been 1,100,000 gallons, while the average daily use is 600,000 gallons. Raw water is treated as follows: prechlorinated, coagulated with alum and lime, and filtered. Storage facilities consist of a 250,000-gallon elevated tank, a 150,000-gallon elevated tank, and a 200,000-gallon clear well. Distribution mains range in size from 2 to 12 inches and the average pressure is .65 psi.

Harrodsburg Municipal Water Works or the Mercer Industrial Development Corporation will provide rates upon request.

Sewerage System: Harrodsburg's sewerage disposal plant provides primary and secondary treatment of sewage. Treatment consists of a trickling filter, two Imhoff tanks, and a settling basin. Final discharge enters Town Branch Creek. The capacity of the system is 700,000 gpd. Maximum daily flow has been 400,000 gallons. The system was designed for a population of 10,000 people. Sanitary mains ranging in size from 4 to 15 inches serve approximately 90 percent of the city. A new digester and two drying beds were constructed in 1963. Rates are available through the Harrodsburg Municipal Water Works or the Mercer Industrial Development Corporation.

EDUCATION:

Mercer County has three school districts. Harrodsburg Independent has a 63-classroom building in which the elementary and high school grades are combined. This system operates on a budget of approximately \$490,000 and has an annual enrollment of approximately 1,000 elementary and 373 high school students. Cost of education per student is \$315. Pupil to teacher ratio is 25 to 1 for elementary students and 17 to 1 for high school pupils.

There is also a parochial elementary school, with an enrollment of 61, in Harrodsburg.

In the Mercer County System there are five elementary schools containing 45 classrooms. The high school system is consolidated and contains 19 classrooms. The Mercer County System operates on a budget of \$566,000. Mercer County elementary schools have an enrollment of 1,153. Student-teacher ratio is 29 to 1. The county high school has an enrollment of 425 and a student-teacher ratio of 19 to 1.

Institutions of higher learning within a 40-mile radius of Harrodsburg include Centre, Asbury, Transylvania, Eastern, Berea, Lexington Theological Seminary, and University of Kentucky.

HOUSING:

Rental range for two- and three-bedroom houses is \$75 to \$125 per month. Construction cost for two- and three-bedroom houses with full basement is \$16,000 to \$20,000, depending on location and materials used. An \$850,000 low-rent housing project containing 82 units was just completed and another 80-unit project is now in the planning stage.

HEALTH:

Harrodsburg is served by an 80-bed, 10-bassinet municipal hospital with all major facilities. Presently, there are nine medical doctors and five dentists in the City of Harrodsburg. The Mercer County Health Department presently has a staff of seven employees who maintain a full-time health program.

CHURCHES:

The following denominations are represented in Harrodsburg: Baptist, Catholic, Christian, Church of Christ, Church of God, Episcopal, and Presbyterian.

RECREATION:

Local recreation includes Young's Park and the Mercer Game & Fish Farm, both of which provide picnic and other recreational facilities. The annual Mercer County Fair & Horse Show is second only to the Kentucky State Fair. The city also provides a complete summer recreation program under the direction of a salaried supervisor.

Harrodsburg is a recreational center for central Kentucky. Facilities within a 10-mile radius of Harrodsburg are listed below.

(1) Herrington Lake has excellent facilities for boating, hiking, swimming, golfing, camping, lodging, and fishing.

(2) Pioneer Memorial State Park, within the city limits, houses famed Old Fort Harrod. The park includes Mansion Museum, Pioneer Cemetery, Lincoln Marriage Temple, and George Rodgers Clark Memorial. Handmade utensils, crude furniture, and other articles used by the early settlers are preserved in the park. A new amphitheater on the park grounds hosts the production "The Legend of Daniel Boone," June 9 through September 3. The park also has complete picnicking facilities.

(3) Constitution Square, Isaac Shelby Memorial, and Perryville Battlefield State Park commemorate significant historical events in Kentucky.

(4) Shakertown, home of the Shakers, a religious society, is undertaking a multimillion dollar restoration program. Shaker furniture and architecture is renowned for its classic simplicity.

(5) Sportleigh Park, 8 acres equipped for night softball, football, and tennis, is maintained by the City Board of Education. A community financed youth center, three playgrounds, an Olympic swimming pool, a 9-hole golf course, a lighted par-3 golf course and driving range, and a 10-lane bowling alley add to recreational opportunities in Harrodsburg.

EXISTING INDUSTRY:

Firm	Product	Employment		
		Male	Female	Total
Barnett Co.	Feed	2	1	3
Corning Glass Works	Optical, ophthalmic glass	243	121	364
Cricketeer, Inc.	Men's coats	17	458	475
Cudahy Packing Co.	Cheese, dried whey	70	9	79
Guthrie Farm Service	Feed, fertilizer	4	0	4
Harrodsburg Herald	Newspaper, letterpress printing	8	9	17
Harrodsburg Ready Mix Concrete Co.	Ready mixed concrete	6	1	7
Harrodsburg Souvenir Co.	Wood souvenirs	3	0	3
Kentucky Marble Quarry, Inc.	Cut stone			4
Lee Dog Food Co.	Dog food			7
Mercer Mobile Mix	Feed grinding			1
Sandusky Mill	Corn meal, feed	6	0	6

For detailed information concerning Harrodsburg,
please request publication
"Industrial Resources, Harrodsburg, Kentucky."

This copy has been prepared by the Kentucky Department of Commerce,
Division of Research, and the cost of printing paid from state funds.

MAJOR HIGHWAY NETWORK IN KENTUCKY

Compiled By
KENTUCKY DEPARTMENT
OF
COMMERCE
Frankfort, Kentucky
SEPT. 1968

LEGEND

INTERSTATE and PARKWAYS

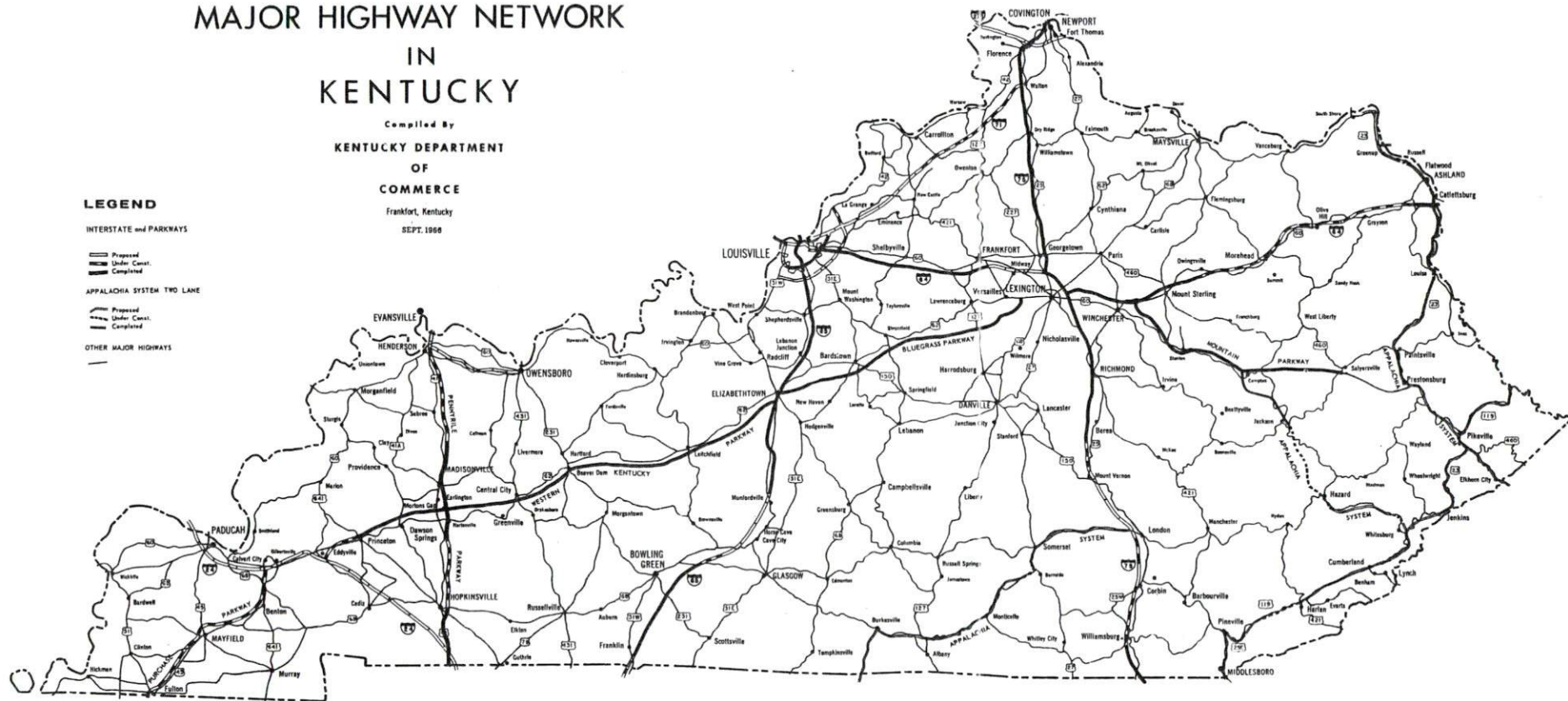
Proposed
Under Const.
Completed

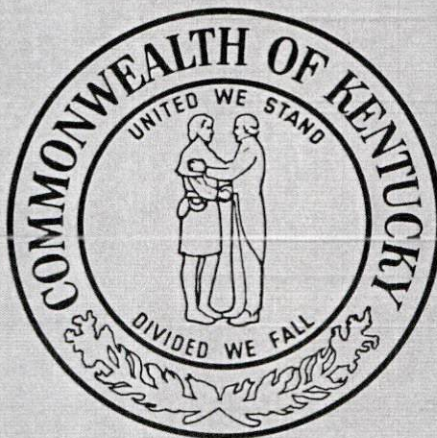
APPALACHIA SYSTEM TWO LANE

Proposed
Under Const.
Completed

OTHER MAJOR HIGHWAYS

MAJOR HIGHWAY NETWORK





PREPARED BY
KENTUCKY DEPARTMENT OF COMMERCE
FRANKFORT, KENTUCKY

AND

MERCER COUNTY
INDUSTRIAL DEVELOPMENT CORP.

1967