

1986

Industrial Resources: Metcalfe County - Edmonton

Kentucky Library Research Collections
Western Kentucky University, spcol@wku.edu

Follow this and additional works at: https://digitalcommons.wku.edu/metcalfe_cty

 Part of the [Business Administration, Management, and Operations Commons](#), [Growth and Development Commons](#), and the [Infrastructure Commons](#)

Recommended Citation

Kentucky Library Research Collections, "Industrial Resources: Metcalfe County - Edmonton" (1986). *Metcalfe County*. Paper 9.
https://digitalcommons.wku.edu/metcalfe_cty/9

This Report is brought to you for free and open access by TopSCHOLAR®. It has been accepted for inclusion in Metcalfe County by an authorized administrator of TopSCHOLAR®. For more information, please contact topscholar@wku.edu.

IR
470 Metcalfe County

RESOURCES FOR ECONOMIC DEVELOPMENT

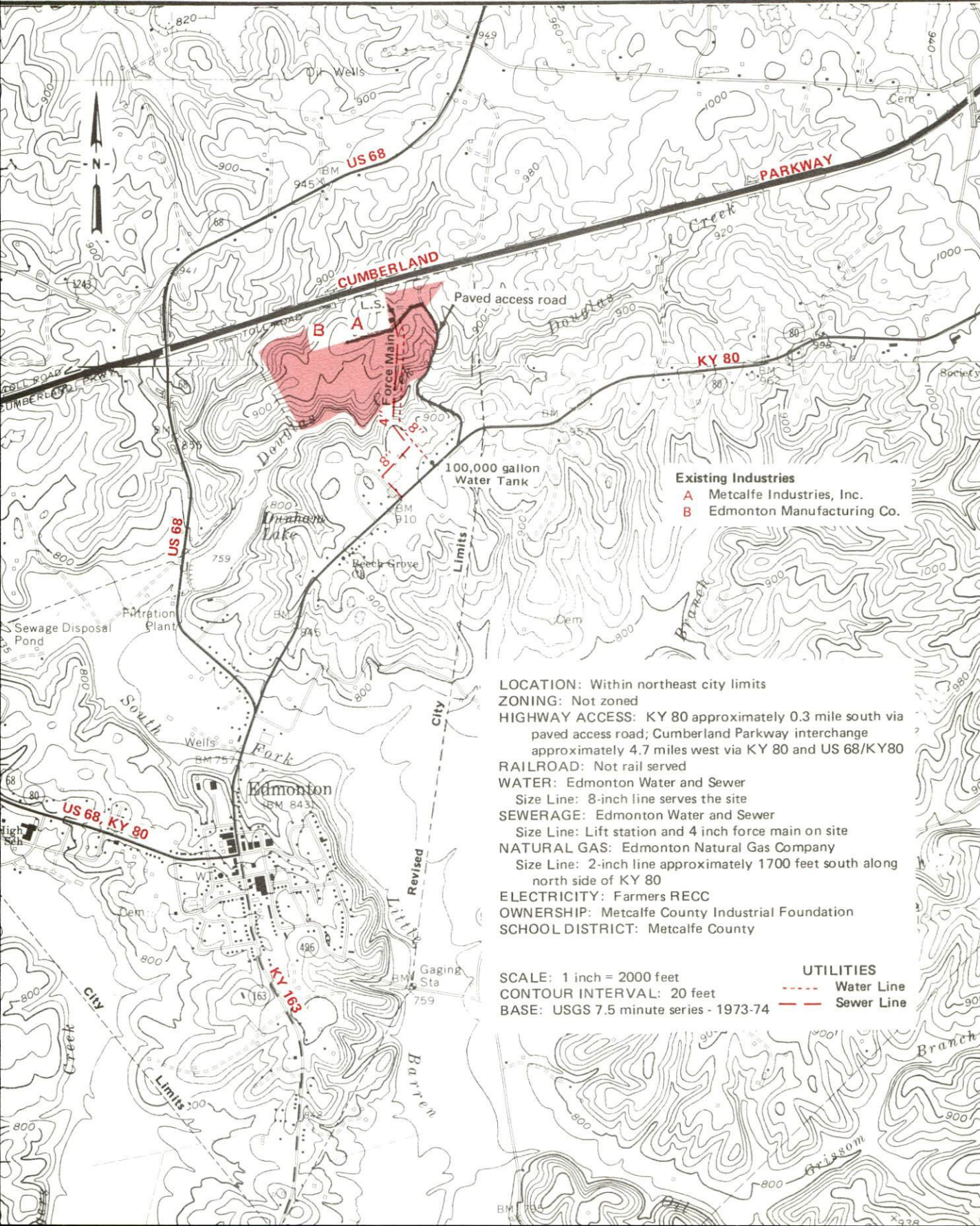
Edmonton



KENTUCKY
The business environment is right.

EDMONTON, KENTUCKY --- Site 186 --- 74.7 Acres

For more information contact the Department of Economic Development, Office of Business Development, Industrial Development Division, Capital Plaza Tower, Frankfort, Kentucky 40601 (502-564-7140).



Existing Industries
A Metcalfe Industries, Inc.
B Edmonton Manufacturing Co.

LOCATION: Within northeast city limits
ZONING: Not zoned
HIGHWAY ACCESS: KY 80 approximately 0.3 mile south via paved access road; Cumberland Parkway interchange approximately 4.7 miles west via KY 80 and US 68/KY 80
RAILROAD: Not rail served
WATER: Edmonton Water and Sewer
 Size Line: 8-inch line serves the site
SEWERAGE: Edmonton Water and Sewer
 Size Line: Lift station and 4 inch force main on site
NATURAL GAS: Edmonton Natural Gas Company
 Size Line: 2-inch line approximately 1700 feet south along north side of KY 80
ELECTRICITY: Farmers RECC
OWNERSHIP: Metcalfe County Industrial Foundation
SCHOOL DISTRICT: Metcalfe County

SCALE: 1 inch = 2000 feet
CONTOUR INTERVAL: 20 feet
BASE: USGS 7.5 minute series - 1973-74

UTILITIES
--- Water Line
--- Sewer Line

RESOURCES FOR ECONOMIC DEVELOPMENT
EDMONTON, KENTUCKY

Prepared by
The Kentucky Department of Economic Development
Division of Research and Planning
in cooperation with
The Edmonton-Metcalfe County Industrial Development Authority
and
The Edmonton-Metcalfe County Chamber of Commerce
and
The City of Edmonton

1986

TABLE OF CONTENTS

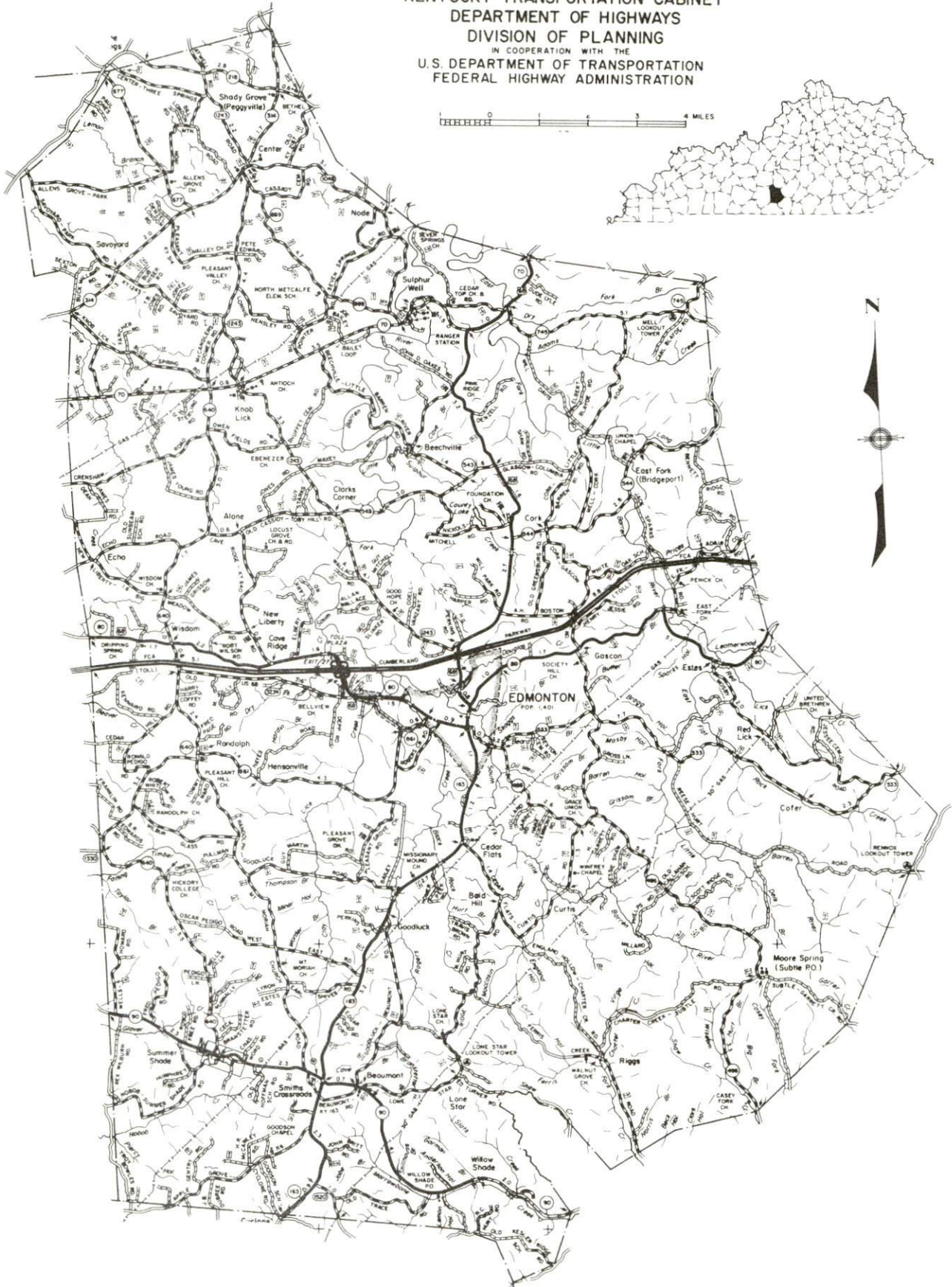
<u>Chapter</u>	<u>Page</u>
INDUSTRIAL SITES	i
EDMONTON, KENTUCKY - A RESOURCE PROFILE	1
LABOR MARKET STATISTICS	2
Population	2
Population Projections	2
Labor Force Characteristics of Residents, 1984	3
Selected Components of Nonagricultural Employment, by Place of Work, 1984	3
Per Capita Personal Income	3
Estimated Male Labor Supply	4
Estimated Female Labor Supply	4
Average Weekly Wages By Industry, by Place of Work, 1984	5
EXISTING INDUSTRY	7
Metcalf County Manufacturing Firms, Their Products and Employment	7
Labor Organizations in Manufacturing Firms	7
Industrial Services	8
TRANSPORTATION	9
Rail	9
Highways	9
Truck Service	9
Air	10
Air Express Service	12
Water	12
POWER AND FUEL	13
Electricity	13
Natural Gas	13
Other Fuels	14
WATER AND SEWERAGE	15
Public Water Supply	15
Sewerage	16

<u>Chapter</u>	<u>Page</u>
CLIMATE	17
LOCAL GOVERNMENT	18
Structure	18
Planning and Zoning	18
Local Fees and Licenses	18
State and Local Property Taxes	19
Safety	20
Police	20
Fire	20
Rescue Service	20
Refuse Collection and Disposal	20
EDUCATION	21
Public Schools	21
Area Colleges and Universities	21
Vocational Schools	22
HEALTH	24
Local Medical Personnel	24
Hospitals	24
Other Medical Facilities	24
Ambulance Service	24
OTHER LOCAL FACILITIES	25
Communications	25
Library Services	25
Religious Institutions	25
Financial Institutions	26
Hotels and Motels	26
RECREATION	27
COMMUNITY IMPROVEMENTS	29

1985 EDITION
GENERAL HIGHWAY MAP
METCALFE COUNTY
KENTUCKY

PREPARED BY THE
KENTUCKY TRANSPORTATION CABINET
DEPARTMENT OF HIGHWAYS
DIVISION OF PLANNING
IN COOPERATION WITH THE
U.S. DEPARTMENT OF TRANSPORTATION
FEDERAL HIGHWAY ADMINISTRATION

0 1 2 3 4 MILES



EDMONTON, KENTUCKY - A RESOURCE PROFILE

Edmonton, the county seat of Metcalfe County, is a small but thriving city strategically located on the multilane Cumberland Parkway, which provides easy access to the interstate highway system. The city had a 1984 estimated population of 1,654 persons. Edmonton is situated in south-central Kentucky, 122 miles south of Louisville, Kentucky; 122 miles southwest of Lexington, Kentucky; and 110 miles northeast of Nashville, Tennessee.

Metcalfe County is located in Kentucky's Mississippian Plateaus Region, with most of the county's terrain ranging from rolling to hilly. Metcalfe County had a 1984 estimated population of 10,188.

The Economic Framework - The total number of Metcalfe County residents employed in 1984 averaged 4,190, with nonagricultural jobs accounting for 3,270 workers. Manufacturing firms in the county reported 430 employees; wholesale and retail trade provided 240 jobs; 70 people were employed in service occupations; and state and local government accounted for 340 employees.

Labor Supply - There is a current estimated labor supply of 6,660 men and 5,560 women available for industrial jobs in the labor market area. In addition, from 1986 through 1990, 4,100 young men and 4,110 young women in the area will become 18 years of age and potentially available for industrial jobs.

Transportation - Edmonton is served by the Cumberland Parkway (a multilane toll road) and by U.S. Highway 68 and Kentucky Routes 80 and 163, all "AAA"-rated trucking highways. Eight trucking companies serve Edmonton. The nearest scheduled airline services are located at Nashville, Tennessee's Nashville Metropolitan Airport, 116 miles distant; and at Lexington, Kentucky's Bluegrass Airport and Louisville, Kentucky's Standiford Field, both 122 miles distant. Edmonton is 40 miles northwest of the Cumberland River at Celina, Tennessee, where a 9-foot navigation channel begins.

Power and Fuel - The Tri-County Electric Membership Corporation, whose source of electricity is Tennessee Valley Authority, provides electricity to Edmonton and south-central Metcalfe County. The major portion of the county receives electricity from Farmers Rural Electric Cooperative Corporation. Natural gas service is provided by the Edmonton Natural Gas Company. There are three propane distributors and five fuel oil distributors within 16 miles of Edmonton.

Education - The Metcalfe County School System provides primary and secondary education to the residents of Edmonton and Metcalfe County. There are six institutions of higher learning within 70 miles of Edmonton. Vocational training is available at the Barren County Area Vocational Education Center at Glasgow, 16 miles distant, and at Bowling Green State Vocational-Technical School at Bowling Green, 49 miles distant.

LABOR MARKET STATISTICS

The Edmonton Labor Market Area includes Metcalfe County and the adjoining Kentucky counties of Adair, Barren, Cumberland, Green, Hart and Monroe.

POPULATION

Area	1984*	1980	1970	Percent Nonwhite
				1980
Edmonton	1,654	1,401	958	2.2
Labor Market Area	108,050	104,813	92,713	N/A
Metcalfe County	10,188	9,484	8,177	3.0
Adair County	15,737	15,233	13,037	3.6
Barren County	34,564	34,009	28,677	5.1
Cumberland County	7,327	7,289	6,850	5.4
Green County	10,971	11,043	10,350	3.5
Hart County	16,694	15,402	13,980	8.1
Monroe County	12,569	12,353	11,642	3.0

* Population estimates.

Note: The 1980 city counts of population by race are provisional.

Sources: U.S. Department of Commerce, Bureau of the Census, 1980 Census of Population and Housing, March 1981; 1980 Census of Population, Number of Inhabitants. University of Louisville, Urban Studies Center, Population Unit, October 1985; Kentucky Population Research Notes, Issue Number One, May 1985.

POPULATION PROJECTIONS

Area	1990	1995	2000	2010
Labor Market Area	115,914	122,328	127,110	134,522
Metcalfe County	10,801	11,522	12,062	12,921
Adair County	17,121	18,116	18,866	19,999
Barren County	38,572	41,283	43,349	46,673
Cumberland County	7,853	8,185	8,392	8,694
Green County	11,556	11,943	12,206	12,560
Hart County	17,007	17,842	18,490	19,488
Monroe County	13,004	13,437	13,745	14,187

Source: University of Louisville, Urban Studies Center, Population Research Unit, How Many Kentuckians: Population Forecasts, 1980-2020, the 1984 Edition, September 1984.

LABOR FORCE CHARACTERISTICS OF RESIDENTS, 1984

	<u>Metcalfe County</u>	<u>Labor Market Area</u>
Civilian Labor Force	4,589	54,324
Employment	4,190	49,544
Agricultural	921	7,580
Nonagricultural	3,269	41,964
Unemployment	399	4,780
Rate of Unemployment (%)	8.7	8.8

Source: Kentucky Cabinet for Human Resources, Kentucky Labor Force Estimates, Annual Averages, 1984.

SELECTED COMPONENTS OF NONAGRICULTURAL EMPLOYMENT,
BY PLACE OF WORK, 1984

	<u>Metcalfe County</u>	<u>Labor Market Area</u>
All Industries (total)	1,179	24,437
Manufacturing	433	9,546
Wholesale & Retail Trade	238	4,772
Services	70	3,409
State/Local Government	338	3,782
Contract Construction	20	955
Mining & Quarrying	14	227

Note: Excludes domestic workers, railway workers, certain nonprofit corporations, majority of federal government workers, and self-employed workers.

Source: Kentucky Cabinet for Human Resources, Average Monthly Workers Covered by Kentucky Unemployment Insurance Law, 1984.

PER CAPITA PERSONAL INCOME

<u>Area</u>	<u>1979</u>	<u>1983</u>	<u>Percent Change</u>
Metcalfe County	\$ 4,599	\$ 5,688	23.7
Labor Market Area Range	\$4,599 - 6,039	\$5,688 - 8,055	N/A
Kentucky	7,124	9,396	31.9
U. S.	8,651	11,687	35.1

Sources: U.S. Department of Commerce, Bureau of Economic Analysis; Commerce News, August 28, 1984; May 7, 1985. Kentucky Economic Information System, June 1985.

ESTIMATED MALE LABOR SUPPLY
EDMONTON LABOR MARKET AREA

Area	Current			Not in Labor Force	Future
	Total Male	Unemployed	Under- employed		Becoming 18 years of age 1986 thru 1990
Labor Market					
Area*	6,659	2,855	2,639	1,165	4,100
Metcalfe	590	216	272	102	399
Adair	906	483	423	0	590
Barren	1,632	906	726	0	1,328
Cumberland	498	217	281	0	266
Green	588	346	242	0	407
Hart	1,510	357	454	699	631
Monroe	935	330	241	364	479

ESTIMATED FEMALE LABOR SUPPLY
EDMONTON LABOR MARKET AREA

Area	Current			Not in Labor Force	Future
	Total Female	Unemployed	Under- employed		Becoming 18 years of age 1986 thru 1990
Labor Market					
Area*	5,562	1,925	2,250	1,387	4,112
Metcalfe	573	183	201	189	368
Adair	556	303	253	0	593
Barren	1,553	642	911	0	1,373
Cumberland	246	94	152	0	262
Green	416	160	193	63	425
Hart	1,609	309	313	987	592
Monroe	609	234	227	148	499

* Additional workers may be drawn from other nearby counties.

Note: Unemployed - persons unemployed and actively seeking work;
Underemployed - persons employed but working only 14 to 26 weeks per year;
Not in Labor Force - represents the number of persons who would enter the
labor force if suitable employment were available (based on the assumption that
persons in Kentucky would like to participate in the labor force in the same
proportion that they do nationally).

Sources: Kentucky Cabinet for Human Resources, Kentucky Labor Supply
Estimates by County, 1984. Kentucky Department of Economic Development,
Future Labor Supply Becoming 18 Years of Age, 1986 thru 1990.

AVERAGE WEEKLY WAGES BY INDUSTRY,
BY PLACE OF WORK, 1984

	<u>Metcalfe County</u>	<u>Adair County</u>	<u>Barren County</u>	<u>Cumberland County</u>
All Industries	\$186.14	\$222.21	\$279.52	\$183.49
Mining & Quarrying	154.93	267.42	312.63	211.60
Contract Construction	131.95	245.25	275.37	175.79
Manufacturing	151.21	216.83	359.08	167.60
Transportation, Communications & Public Utilities	369.85	292.88	321.42	155.89
Wholesale & Retail Trade	153.52	154.96	175.18	163.11
Finance, Insurance & Real Estate	202.06	299.72	283.75	214.50
Services	250.44	192.19	218.62	171.87
State/Local Government	234.34	300.45	271.26	260.64
Other	*	116.16	112.48	*

	<u>Green County</u>	<u>Hart County</u>	<u>Monroe County</u>
All Industries	\$227.44	\$229.43	\$204.77
Mining & Quarrying	*	*	*
Contract Construction	170.09	277.11	123.79
Manufacturing	243.85	266.28	203.97
Transportation, Communications & Public Utilities	502.22	214.35	467.68
Wholesale & Retail Trade	149.62	180.86	178.72
Finance, Insurance & Real Estate	230.49	267.74	283.13
Services	142.64	183.86	141.66
State/Local Government	249.23	241.36	230.99
Other	*	243.88	172.06

* Not disclosed.

Note: Excludes domestic workers, railway workers, certain nonprofit corporations, majority of federal government workers, and self-employed workers.

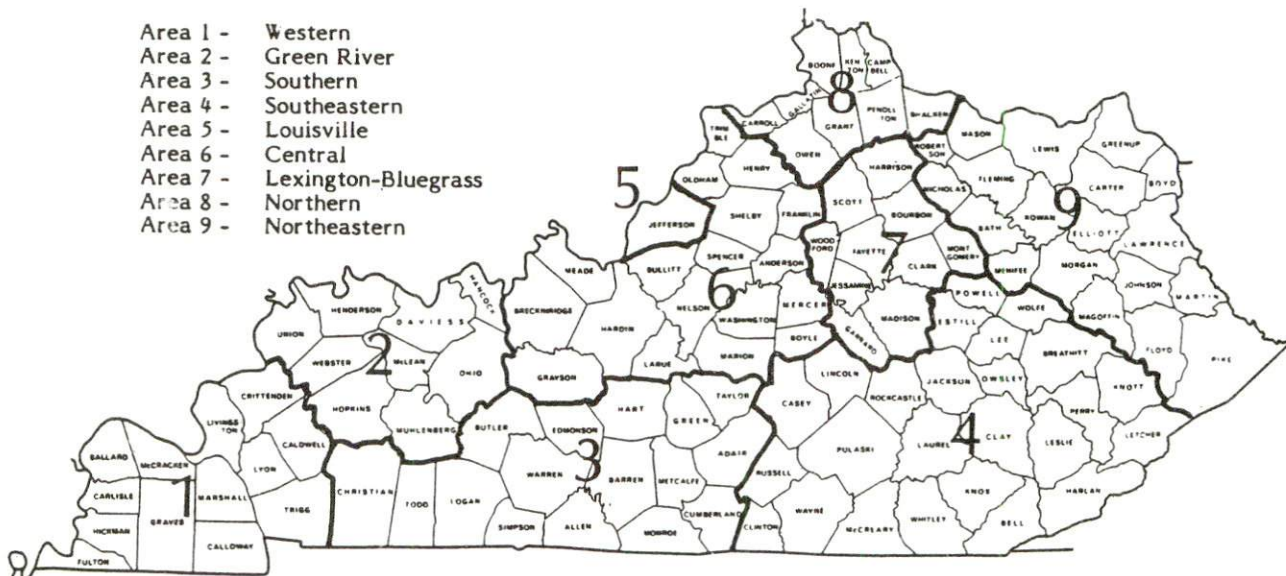
Source: Kentucky Cabinet for Human Resources, Average Weekly Wages of Workers Covered by Kentucky Unemployment Insurance Law, 1984.

Up to date occupational wage rates of the existing industries are maintained by South Kentucky Industrial Development Association, Post Office Box 726, Hopkinsville, Kentucky 42240.

Occupational wage rates for specific industries are usually not available to most government agencies, and wage data furnished to state employment agencies by individual industrial employers are protected from disclosure by federal law. The most reliable up-to-date wage information can be obtained by direct contact with local employers.

Associated Industries of Kentucky, a voluntary organization of Kentucky businesses, regularly collects occupational wage rates and fringe benefits data from participating member firms. Data are compiled for over 127 clearly defined office, production, and service occupations. Tabulations are published for nine geographical areas of Kentucky, as shown on the map below. It should be noted that the data may be weighted by the preponderance of firms in the larger cities and may be somewhat higher than the rates paid in the smaller communities. Data from these tabulations are available, upon request, from the Kentucky Department of Economic Development, Frankfort, Kentucky 40601.

- Area 1 - Western
- Area 2 - Green River
- Area 3 - Southern
- Area 4 - Southeastern
- Area 5 - Louisville
- Area 6 - Central
- Area 7 - Lexington-Bluegrass
- Area 8 - Northern
- Area 9 - Northeastern



Associated Industries of Kentucky Area Wage Surveys

EXISTING INDUSTRY

METCALFE COUNTY MANUFACTURING FIRMS, THEIR PRODUCTS AND EMPLOYMENT

<u>Firm</u> (Establishment date)	<u>Product</u>	<u>Employment</u>		
		<u>Total</u>	<u>Male</u>	<u>Female</u>
Edmonton				
Clifton Bennett & Son (1953)	Rough lumber	2	2	0
Edmonton Manufacturing Company (1953)	Men's work clothing, men's uniforms	225	30	195
Metcalf County Ready Mix, Inc. (1983)	Ready-mixed concrete, concrete septic tanks	3	--	--
Metcalf Industries, Inc. (1976)	Ladies' jeans, ladies' blouses, men's shirts	125	25	100
Product Packaging Corporation (1980)	Printed cards, contract packaging material, injection molding	25	--	--
Rondal Phelps Lumber Company (1975)	Rough lumber	30	--	--
S.P.P. Apparels Corporation (1985)	Ladies' jeans	60	--	--
Tuckasee Mulch Company, Inc. (1986)	Hardwood bark mulch	20	--	--
Valley Fertilizer Service; Division of Warner Fertilizer Company, Inc. (1986)	Fertilizer mixing	5	--	--
Vista Graphics Printers and Lithographers (1986)	Commercial printing	2	--	--
Summer Shade				
Homer Bartley Lumber Company (1941)	Rough lumber, crossties, cants	22	22	0
L.P.H. Manufacturing Company, Inc. (1977)	Wood bedframes	9	8	1
C. H. McMurtrey & Son (1946)	Stock, grain bodies	6	6	0
James Ritter Lumber Company (1978)	Rough lumber	25	--	--

Sources: Kentucky Department of Economic Development, 1986 Kentucky Directory of Manufacturers; Division of Research and Planning

LABOR ORGANIZATIONS IN MANUFACTURING FIRMS

There are presently no labor unions representing manufacturing workers in Metcalfe County.

SELECTED INDUSTRIAL SERVICES

<u>Types of Services</u>	<u>Location</u>	<u>Mileage from Edmonton</u>
Custom Plastics Producers	Bowling Green, Kentucky	49
Electric Motor Repair	Glasgow, Kentucky	16
Grinding, Precision & Tool	Nashville, Tennessee	110
	Louisville, Kentucky	122
Heat Treating Facilities	Nashville, Tennessee	110
	Lexington, Kentucky	122
	Louisville, Kentucky	122
Industrial Equipment & Supplies	Bowling Green, Kentucky	49
Industrial Gases	Campbellsville, Kentucky	39
	Bowling Green, Kentucky	49
Industrial Waste Removal	Somerset, Kentucky	65
	Elizabethtown, Kentucky	69
Machine Shops, Tool & Die	Tompkinsville, Kentucky	22
	Horse Cave, Kentucky	32
Metal Finishers	Elizabethtown, Kentucky	69
Metal Service Centers	Bowling Green, Kentucky	49
Millwrights	Bowling Green, Kentucky	49
Public Warehouse Facilities	Bowling Green, Kentucky	49

Sources: Kentucky Department of Economic Development, Kentucky Directory of Selected Industrial Services, 1985; Division of Research and Planning.

TRANSPORTATION

Rail

Line nearest **Edmonton** - The nearest rail service, provided by the CSX Transportation, is located at Glasgow, 16 miles distant. CSX Transportation operates the privately owned Glasgow Railroad.

For details on routing, schedules, rates, and services, contact:

Manager of Industrial Development
CSX Transportation
P. O. Box 2157
Louisville, Kentucky 40201
(502) 587-5228

Highways

Edmonton is served by U.S. Highway 68, a "AAA"-rated (80,000-pound gross load limit) trucking highway, and Kentucky Routes 80 and 163, which are also "AAA"-rated, plus Kentucky Routes 496 and 533. An interchange of the Cumberland Parkway, a multilane toll road, is only two miles west of the city. Interstate 65 is 29 miles to the west via the Cumberland Parkway.

Truck Service

ARA/Smith's*
American Freight System, Inc.**
Bailey's Express, Inc.*
Bestway Express, Inc.*
Manning Motor Express, Inc.*

Middlewest Freightways, Inc.*
Monticello-Albany Freight Lines,
Inc.*
Overnite Transportation
Company*

* Interstate and intrastate.

** Interstate only.

Source: American Motor Carrier Directory, Spring 1986.

HIGHWAY MILES AND TRUCK TRANSIT TIME IN DAYS FROM
EDMONTON, KENTUCKY, TO SELECTED MARKET CENTERS

City	Highway Miles	Delivery Time TL	City	Highway Miles	Delivery Time TL
Atlanta, Ga.	352	1	Los Angeles, Ca.	2,135	5
Baltimore, Md.	663	2	Louisville, Ky.	122	1
Birmingham, Ala.	306	1	Nashville, Tenn.	110	1
Chicago, Ill.	414	2	New Orleans, La.	627	2
Cincinnati, Ohio	206	2	New York, N. Y.	825	4
Cleveland, Ohio	450	2	Pittsburgh, Pa.	465	3
Detroit, Mich.	465	2	St. Louis, Mo.	327	2
Knoxville, Tenn.	194	1			

Note: Mileage computations are via the best interstate or primary highways, not necessarily the most direct route of travel.

Sources: Rand McNally Road Atlas, 1979. Official Kentucky Mileage Map, 1980.
Delivery time - Overnite Transportation Company; Memphis Junction Road;
Bowling Green, Kentucky 42101.

Air

Local

Location: Moore Field
2 miles northwest of Glasgow;
18 miles west of Edmonton

Runways: 1 paved

Length: 4,000 feet, 600 feet of paved overrun

Traffic Control: Wind sock

Lighting: Runway lights sundown to sunrise, REIL, VASI

Services: 100LL, jet-A fuel, minor A & P repairs, charter, flight
instruction, hangar, tie-downs; taxi, rental cars available,
auxiliary power unit, plane rental

Air Freight Service: Chartered air freight service must be arranged.

(Continued)

Nearest Scheduled Commercial Airline Service

Standiford Field
Location: 5 miles southeast of center of Louisville, Kentucky;
117 miles north of Edmonton
Runways: 2 paved
Length: 10,000 feet; 7,250 feet
Traffic
Control: Control tower
Lighting: Runways, obstructions, beacon and approach; touch-
down lights and center line on one runway
Services: Delta, Eastern, Ozark, Piedmont, Britt Airways, Midstate,
Republic, TWA, United, USAir, Allegheny Commuter,
Comair, Florida Express; fuel - 100 and jet-A; major A & P
repairs; major Avionics repairs; APU, charter, oxygen, U. S.
Customs; taxi, car rentals, limousine, courtesy car,
public transit; Weather Bureau; restaurant, snack bar
Air Freight
Service: Air freight terminal

Bluegrass Airport
Location: 5 miles west of Lexington, Kentucky;
117 miles northeast of Edmonton
Runways: 2 paved
Length: 7,000 feet; 3,500 feet
Traffic
Control: Tower
Lighting: Approach lighting system, beacon, runways and
obstructions lighted, VASI
Services: Delta, Piedmont, United, USAir, Allegheny Commuter,
Piedmont Commuter, Eastern Metro, Comair, American
Eagle; fuel - 100LL and jet-A; hangars, tie-downs; major
A & P repairs; major Avionics repairs; APU, charter, flight
instruction, oxygen, plane rentals, survival equipment; taxi,
limousine, car rentals, courtesy car, weather information;
restaurant, snack bar
Air Freight
Service: Air freight terminal

(Continued)

Location: Nashville Metropolitan Airport
 6 miles southeast of Nashville, Tennessee;
 116 miles southwest of Edmonton
 Runways: 3 paved
 Length: 8,000 feet; 7,700 feet; 4,320 feet
 Traffic Control: Tower
 Lighting: Beacon, runway
 Services: American, Delta, Eastern, Ozark, Pan Am, Piedmont,
 Republic, TWA, United, USAir, Allegheny Commuter,
 Southwest, Comair, Florida Express, Air Midwest,
 Peoples Express, Prime Air, Sunbird, Tennessee Airways;
 fuel - 100LL, jet-A; tie-downs, hangars; major A & P
 repairs, major Avionics repairs; APU, charter, flight
 instruction, oxygen, plane rental, survival equipment, U. S.
 Customs; taxi, limousine, car rental, courtesy car, public
 transit; weather information; restaurant, snack bar
 Air Freight Service: Air freight terminal

Air Express Service

Several major companies offer air express services in Kentucky. These companies provide a quick means of shipping small to medium-sized packages expeditiously.

Water

The nearest navigable waterway is the Cumberland River at Celina, Tennessee, approximately 40 miles southeast of Edmonton, where a 9-foot navigation channel begins.

POWER AND FUEL

Electricity

Company serving **Edmonton and south-central Metcalfe County** - Tri-County Electric Membership Corporation
Source of power - Tennessee Valley Authority
For industrial rates contact:

South Kentucky Industrial
Development Association, Inc.
P. O. Box 726
Hopkinsville, Kentucky 42240
(502) 885-5392

and/or

Tri-County Electric Membership
Corporation
405 College Street
P. O. Box 40
Lafayette, Tennessee 37083
(615) 666-2111

Company serving **the majority of Metcalfe County** - Farmers Rural Electric Cooperative Corporation
Source of power - East Kentucky Power Cooperative
For industrial rates contact:

Industrial Development Division
East Kentucky Power Cooperative
P. O. Box 707
Winchester, Kentucky 40391
(606) 744-4812

Natural Gas

Company serving **Edmonton** - Edmonton Natural Gas Company
Source of supply - Texas Eastern Transmission Corporation
Size of transmission mains - 30-inch (supplier); 3-inch (distributor)
Distribution mains - 2- and 3-inch
Distribution pressure - 30 psi
Btu content - 1,033 per cubic foot
Specific gravity - 0.59
For rates and supplies contact:

Edmonton Natural Gas Company
East and Hamilton Streets
P. O. Box 374
Edmonton, Kentucky 42129
(502) 432-4844 or (502) 432-2811

Other Fuels (Within 16 miles)

Propane

Buckeye Gas Products Company
(Bulk)
West Main
Glasgow, Kentucky 42141

Pargas of Glasgow, Inc.
214 Industrial Drive
Glasgow, Kentucky 42141

Doxol Propane (Bulk)
921 West Main
Glasgow, Kentucky 42141

Fuel oils

Distillate fuel oil -

Ashland Oil Company
921 West Main
Glasgow, Kentucky 42141

Paul Bridges Oil Company
Industrial Drive
Glasgow, Kentucky 42141

Benedict & Benedict, Inc.
103 East College
Glasgow, Kentucky 42141

Wininger Oil Company, Inc.
South 31-E
Glasgow, Kentucky 42141

Big Meadow Farm Supply, Inc.
Route 1, Box 122-A
Knob Lick, Kentucky 42154

Residual fuel oil - Arrangements must be made with the refinery.

Low sulphur content coal - Available in Kentucky.

WATER AND SEWERAGE

Public Water Supply

Company serving **Edmonton, Summer Shade, and southern Metcalfe County -**

Edmonton Water and Sewer*
East and Hamilton Streets
P. O. Box 374
Edmonton, Kentucky 42129
(502) 432-4844 or (502) 432-2811

Source of supply of treated water - Glasgow Water Company, Glasgow Kentucky**

Maximum amount of treated water which may be purchased - 1,000,000 gallons per day

Average daily consumption - 200,000 gallons

Peak daily consumption - 392,000 gallons

Storage capacity - 505,000 gallons

Size lines - 2 inches through 10 inches

Average pressure - 25 psi to 110 psi

MONTHLY WATER RATES

Inside city

First	2,000 gallons	\$9.10 (Minimum bill)
Next	8,000 gallons	3.50 per M gallons
Next	5,000 gallons	2.50 per M gallons
Next	5,000 gallons	1.90 per M gallons
Next	5,000 gallons	1.50 per M gallons
All over	25,000 gallons	1.20 per M gallons

Outside city

First	2,000 gallons	\$11.25 (Minimum bill)
Next	8,000 gallons	3.70 per M gallons
Next	5,000 gallons	2.50 per M gallons
Over	15,000 gallons	1.90 per M gallons

Tap-on charge:

Residential - \$100 for 5/8- or 3/4-inch meter
Larger meters - Cost plus 10%

* Edmonton Water and Sewer owns and operates the facilities of the former Summer Shade Water District.

** The city of Edmonton recently began purchasing all its treated water from the Glasgow Water Company. Edmonton's water treatment plant is no longer operating, but is being kept for use as a back-up supply in case of emergency.

Sewerage

Company serving **Edmonton** - Edmonton Water and Sewer*
East and Hamilton Streets
P. O. Box 374
Edmonton, Kentucky 42129
(502) 432-4844 or (502) 432-2811

Design capacity - 90,000 gallons per day

Average daily flow - At capacity

Treatment processes - Lagoon system, chlorination

Type treatment - Primary

Treated effluent discharged into - South fork of Little Barren River

Size of sanitary mains - 6, 8 and 10 inches

Size of storm mains - 18, 24 and 36 inches

Rates -

First	2,000 gallons	\$5.00 (Minimum bill)
Next	8,000 gallons	1.75 per M gallons
Next	5,000 gallons	1.25 per M gallons
Next	5,000 gallons	.95 per M gallons
Next	5,000 gallons	.75 per M gallons
All over	25,000 gallons	.60 per M gallons

Tap-on charge:

Residential - \$100

Commercial & Industrial - Cost plus 10%

* A Sewer System Evaluation Study and a 201 Facilities Study have been completed for the city of Edmonton. A recommendation was made to construct a treatment plant to replace the current lagoon system by 1988.

CLIMATE

Metcalf County

Temperature

Normal (30-year record)	58.80 degrees
Average annual 1984	58.10 degrees
Record highest, September 1954 (43-year record)	103.00 degrees
Record lowest, January 1966 (43-year record)	-9.00 degrees
Normal heating degree days (30-year record) (Heating degree day totals are the sums of negative departures of average daily temperatures from 65 degrees F.)	3,658

Precipitation

Normal (30-year record)	47.29 inches
Mean annual snowfall (29-year record)	12.30 inches
Total precipitation 1984	48.54 inches
Mean number days precipitation (.01 inch or more) (42-year record)	127.10
Mean number days thunderstorms (42-year record)	47.00

Prevailing Winds (through 1963)

Northeast

Relative Humidity (24-year record)

1 a.m.	80 percent
7 a.m.	85 percent
1 p.m.	59 percent
7 p.m.	63 percent

Source: U.S. Department of Commerce, Environmental Science Services Administration, Climatological Data, 1984. Station of record: Knoxville, Tennessee.

LOCAL GOVERNMENT

Structure

Edmonton is served by a mayor and six council members. Metcalfe County is served by a county judge/executive and four magistrates.

Planning and Zoning

Currently, Edmonton is making plans to form a planning and zoning commission. There is no planning and zoning agency at the present time.

Mandatory state codes enforced - Kentucky Plumbing Code, National Electric Code, Kentucky Boiler Regulations and Standards, Kentucky Building Code (modeled after BOCA code)

Local Fees and Licenses

Edmonton levies occupational license fees of one percent of wages of individuals and one percent of net profits of businesses. The city also levies an annual unloading license fee of \$18.75 for trucks making deliveries inside the city.

State and Local Property Taxes

All property in Kentucky, except items exempted by the state constitution, is taxed by the state. Property which also may be taxed by local jurisdictions includes land and buildings, finished goods inventories, automobiles, trucks, office furniture and office equipment. Local taxing jurisdictions in Kentucky include counties, cities, and school districts.

All property in Kentucky is assessed at 100 percent of fair cash value.

COMBINED STATE AND LOCAL RATES PER \$100 VALUATION, 1985

	<u>Edmonton</u>	Unincorporated <u>Metcalfe County</u>
Land and Buildings	\$ 0.725	\$ 0.574
Manufacturing Machinery	0.150	0.150
Pollution Control Equipment	0.150	0.150
Inventories		
Raw materials	0.001*	0.001*
Goods in Process	0.001*	0.001*
Finished Goods	0.506*	0.355*
Automobiles and Trucks	0.957	0.805
Other Tangible Personal Property	0.955	0.804
Intangibles (Accounts receivable, money in hand, stock, notes, bonds)	0.250	0.250
Goods Stored in Public Warehouses in Transit Status	0.001*	0.001*
Private Leaseholds in Industrial Revenue Bond Financed Facilities	0.015	0.015

* Includes 1986 state rate.

** Accounts receivable are taxed at 85 percent of face value, for an effective rate of \$0.2125 per \$100 valuation.

Safety

Police	Edmonton	Metcalfe County
Total staff	4	3
Radio-patrol cars	1	2
Fire*		
Insurance Services Office, Public Protection Classification	7	**
Volunteers	20	**
Rescue Service		

Rescue service in Edmonton and Metcalfe County is provided through the cooperative resources of the local police department, fire department, and ambulance service.

Refuse Collection and Disposal

Refuse collection and disposal service in Edmonton and Metcalfe County is provided by private contractors.

* Includes copyrighted material of ISO Commercial Risk Services, Inc., with its permission.

** Fire protection is provided to Metcalfe County by volunteers from the Edmonton Fire Department, the Summer Shade Fire Department, and the Center/North Metcalfe Fire District. Property located within 5 road miles of the Center/North Metcalfe Fire Department has a Class 9 rating. Property in all other unincorporated areas of Metcalfe County has a Class 10 rating.

EDUCATION

Public Schools

Metcalf County

Total Enrollment (Spring, 1986)	1,691
Kindergarten	140
Elementary	1,074
High School	477
Pupil-Teacher Ratio (1984-85)	20-1
Percent High School Graduates to College (1984-85)	27.9
Expenditures Per Pupil (1984-85)	\$1,740.80

Area Colleges and Universities

<u>Name</u>	<u>Location (Miles distant)</u>	<u>Enrollment (Fall, 1985)</u>	<u>Highest Degree Conferred</u>
Lindsey Wilson College	Columbia (23)	635	Associate*
Campbellsville College	Campbellsville (40)	648	Baccalaureate
Western Kentucky University	Bowling Green (49)	11,259	Masters, Specialist**
Somerset Community College	Somerset (65)	1,161	Associate
Saint Catharine College	Springfield (68)	246	Associate
Elizabethtown Community College	Elizabethtown (69)	2,049	Associate

* Lindsey Wilson College is changing from a two-year to a four-year institution. Beginning in Fall 1986 the college will offer classes for juniors. In the 1986-87 school year it will add classes for seniors and award its first baccalaureate degrees.

** Joint doctoral degree programs are offered in cooperation with the University of Kentucky, Lexington, and cooperative doctoral degree programs are offered with the University of Louisville. The degrees are issued by the University of Kentucky or the University of Louisville.

Vocational Schools

The Kentucky Department of Education operates both the state vocational-technical schools and the area vocational education centers. The state vocational-technical schools are post-secondary institutions. The area vocational education centers are designed to supplement the curriculum of high school students. Both the state vocational-technical schools and the area vocational education centers offer evening courses to enable working adults to upgrade current job skills.

Arrangements can be made to provide training in the specific production skills required by an industrial plant. Instruction may be conducted either in the vocational school or in the industrial plant, depending upon the desired arrangement and the availability of special equipment.

Nearest State School

Bowling Green State Vocational-Technical School
Bowling Green, 49 miles distant

Agriculture	Auto Body Repair
Adult Agriculture	Auto Mechanics
Business & Office	Carpentry
Accounting/Jr. Management	Diesel Mechanics
Clerical	Electricity
Secretarial	Electronics
Retailing	Graphic Arts (Printing)
Consumer & Home Economics	Industrial Maintenance
Commercial Foods	Machine Shop
Consumer & Family Life Skills	Masonry
Health & Personal Services Occupations	Plumbing
Dental Assistant	Related Math
Health Careers	Refrigeration & Air Conditioning
Nurse Assistant	Technical Drafting
Practical Nurse	Tool & Die Making
Radiological Technology	Truck Driving
Respiratory Therapy	Welding
Surgical Technician	Learning Resources Center
Industrial Education	Computer Lab
Automated Manufacturing/Robotics	

(Continued)

Nearest Area Education Center

Barren County Area Vocational Education Center
Glasgow, 16 miles distant

Business and Office

Secretarial

Clerical

Junior Management

Health & Personal Services Occupations

Health Services

Industrial Education

Air Conditioning & Refrigeration/

Heating

Auto Mechanics

Carpentry

Drafting

Electricity (industrial &
residential)

Machine Shop

Welding

HEALTH

Local Medical Personnel

Physicians - 2
Dentists - 4

Hospitals

T. J. Samson Community Hospital - Glasgow, 16 miles distant (218 beds)

Medical staff - 42 doctors, 68 registered nurses, and 132 licensed practical nurses

Westlake Cumberland Hospital - Columbia, 23 miles distant (65 beds)

Medical staff - 16 physicians, 41 registered nurses, and 28 licensed practical nurses.

Other Medical Facilities

Metcalf County Health Department - A public health facility
Metcalf County Nursing Home - Personal care and intermediate care

Ambulance Service

Name - Barren-Metcalf County Ambulance Service*
Staff - 18 emergency medical technicians, one supervisor, and one secretary

* Stations in Edmonton and Glasgow.

OTHER LOCAL FACILITIES

Communications

Telephone -	South Central Rural Telephone Cooperative
Telegraph -	Western Union Toll-free number, 1-800-325-6000
Newspaper - Semi-weekly and circulation -	The Edmonton Herald News - 1,600
Television - Airwave reception from -	Bowling Green, Campbellsville, and Louisville, Kentucky; Nashville, Tennessee
Cable service - Educational television -	Mid Kentucky Cable TV, Inc. The Kentucky Educational Television (K.E.T.) network is available statewide

Library Services

Public library - Metcalfe County Public Library
Size collection - 34,352 volumes
Circulation, 1984-85 - 65,967 (library and bookmobile)

Religious Institutions

Denominations -	Apostolic Baptist Catholic Christian	Church of Christ Cumberland Presbyterian Latter Day Saints Methodist
Nearest Synagogues -	Nashville, Tennessee, 110 miles southwest Lexington, Kentucky, 122 miles northeast Louisville, Kentucky, 122 miles north	
Congregations -	Nashville -	Sherith Israel (orthodox) Ohabai Shalom (reform) West End Synagogue (conservative)
	Lexington -	Adath Israel (reform) Ohavey Zion (traditional)
	Louisville -	Adath Israel Brith Sholom (reform) Adath Jeshurum (conservative) Anshei Sfard (orthodox) Keneseth Israel (orthodox) Sholom (reform)

Financial Institutions

<u>Banks</u>	<u>Assets</u>	<u>Deposits</u>	<u>Statement Date</u>
Edmonton State Bank	\$47,662,301.24	\$42,088,253.33	12/31/85
<u>Savings and Loan Associations</u>	<u>Assets</u>	<u>Savings Accounts</u>	<u>Statement Date</u>
First Federal Savings Bank*	\$147,733,163.00	\$138,584,005.00	6/30/85

Hotels and Motels

Total number - 1
Total rooms - 10

* Figures shown are totals for offices in Edmonton and five other Kentucky cities.

RECREATION

Local

Edmonton offers supervised recreational programs during the summer months. Recreational facilities include parks, playgrounds, gymnasiums, ball fields, and tennis courts.

Edmonton's M.A.R.C. Park contains a playground, tennis courts, softball and baseball fields, basketball goals, picnic facilities, and a running track. The Barnlot Theater is located at M.A.R.C. Park, and features two or more amateur theatrical productions each summer. A recreational complex is being constructed at the park.

The 25-acre Metcalfe County Lake and Park provides for activities such as swimming, fishing, shooting, archery, and primitive camping. A playground and facilities for basketball, volleyball, softball, and picnicking are available also.

The Sulphur Well Park is a small community park at the site of an artesian sulphur well. The park features a picnic shelter and rest rooms.

Annual events in Edmonton include the Metcalfe County Fair and the Pumpkin Festival/Band Festival. The Metcalfe County Fair is held each July at the Metcalfe County Fairgrounds, and features a horse show, a pony celebration, a parade, a beauty contest, a tractor pull, a mule pulling contest, exhibits, and entertainment.

The Pumpkin Festival/Band Festival is held on the third Saturday each October, and features entertainment, a festival of school bands, a parade, foods, and arts and crafts.

Area (Within 55 miles)

Old Mulkey Meeting House State Shrine, 25 miles south of Edmonton near Tompkinsville, offers picnic areas and playgrounds. The house was built in 1804, and is the oldest log meeting house in the state. Daniel Boone's sister is buried in the graveyard and authentic records written in pokeberry ink are on display.

Mammoth Cave National Park is located 29 miles northwest of Edmonton near Cave City. Beneath 52,000 park acres, Mammoth Cave is among the major tourist attractions of all times. It is the largest cave network ever discovered, with at least 230 miles of caverns. Some famous sights are Snowball Dining Room (267 feet below surface), Frozen Niagara, Crystal Lake, and Bottomless Pit. The park also features scenic boat trips on the Green River and nature and hiking trails. Park accommodations include a hotel with distinctive gift shops featuring native Kentucky and Southern Highland handicrafts, a motor lodge, hotel cottages, woodland cottages, and a hotel annex with budget accommodations and craft shop featuring live exhibits of broom making and weaving. Other park facilities include the hotel dining room and coffee shop, a service center, group meeting facilities, a campground, a picnic area, and tennis and shuffleboard courts.

Nolin River Lake is just north of Mammoth Cave National Park. The lake has a surface area of 5,800 acres and offers facilities for camping, boating, and fishing.

Barren River Lake State Resort Park, 30 miles southwest of Edmonton near Glasgow, is a full-facility resort park offering a 51-room resort lodge, a coffee shop, 12 cottages, a lodge pool, a beach, riding stables, nature trails, open and covered boat slips, a 9-hole golf course, lighted handball and tennis courts, shuffleboard, park camping with a service building, a restaurant, fishing and pleasure boat rentals, picnic areas, and a playground. Barren River Lake, which covers 10,000 acres, is a popular area for skiing, sailing, fishing, and swimming.

Dale Hollow Lake State Park, 38 miles southeast of Edmonton, is located alongside 48 square miles of surface water in southeastern Cumberland County. Park facilities include a marina, a picnic area, and 144 sites for tent and trailer camping. Dale Hollow Lake straddles the Kentucky-Tennessee state line. Several private recreation facilities are located near the lake.

Green River Lake State Park near Campbellsville, 43 miles northeast of Edmonton, is made up of 1,300 acres surrounding an 8,200-acre lake. The park is open all year-round and offers 96 campsites, a beach, boat docks, fishing, and a picnic area.

Bowling Green is located 49 miles west of Edmonton. Bowling Green serves the area as a recreational and educational center. Western Kentucky University provides the city with many exciting sporting events. Beech Bend Amusement Park has many rides, games and other forms of entertainment.

Lake Cumberland State Resort Park near Jamestown, 54 miles southeast of Edmonton, is a 3,000-acre park located on the 50,000-acre Lake Cumberland, which sports excellent bass, bluegill, and crappie fishing. The park features a modern 48-room resort lodge which is perched on a high bluff above the lake. The lodge has a swimming pool, a dining room, a gift shop, and a multi-purpose activities center. Other park facilities include an additional swimming pool, riding stables, tennis courts, hiking trails, a 9-hole golf course, miniature golf, a picnic area, and a playground. A marina offers houseboats, and fishing boats and motors for rent plus year-round launching ramps.

COMMUNITY IMPROVEMENTS

Recent

Since 1985, four new manufacturing plants have begun operations at Edmonton, and one company has announced plans to open a new facility at Edmonton. In 1984, Product Packaging Corporation announced plans to expand its facility at Edmonton.

The city of Edmonton recently connected its fresh water distribution system to the distribution lines of the Glasgow Water Company, and now purchases all of its fresh water supply from Glasgow. Edmonton Water and Sewer also constructed two new fresh water storage tanks in 1985.

The Metcalfe County School System recently completed construction of ten new classrooms at its elementary and high schools.

A new building was constructed in 1984 to house the Summer Shade branch of the Edmonton State Bank.

Under Way

A recreational complex is being constructed at M.A.R.C. Park.

Planned

A proposal has been made to widen and improve U.S. Highway 68 north of Edmonton to the Metcalfe County line.

A recommendation has been made that a new sewage treatment facility be constructed for the city of Edmonton.