

1971

# Industrial Resources: Montgomery County - Mount Sterling

Kentucky Library Research Collections  
Western Kentucky University, [spcol@wku.edu](mailto:spcol@wku.edu)

Follow this and additional works at: [https://digitalcommons.wku.edu/montgomery\\_cty](https://digitalcommons.wku.edu/montgomery_cty)



Part of the [Business Administration, Management, and Operations Commons](#), [Growth and Development Commons](#), and the [Infrastructure Commons](#)

---

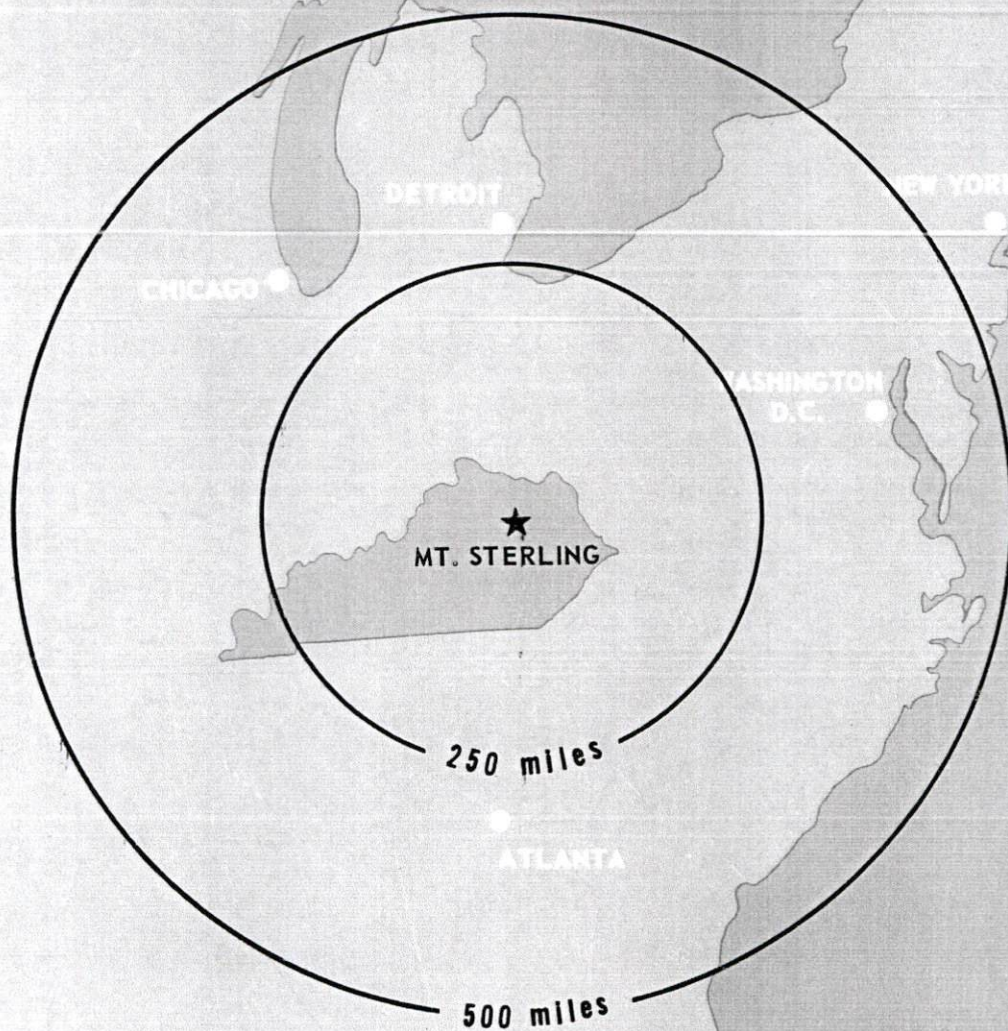
## Recommended Citation

Kentucky Library Research Collections, "Industrial Resources: Montgomery County - Mount Sterling" (1971). *Montgomery County*. Paper 14.  
[https://digitalcommons.wku.edu/montgomery\\_cty/14](https://digitalcommons.wku.edu/montgomery_cty/14)

This Report is brought to you for free and open access by TopSCHOLAR®. It has been accepted for inclusion in Montgomery County by an authorized administrator of TopSCHOLAR®. For more information, please contact [topscholar@wku.edu](mailto:topscholar@wku.edu).

# INDUSTRIAL RESOURCES

## ***MT. STERLING*** ***KENTUCKY***



MT. STERLING INDUSTRIAL SITES

1971



MOUNT STERLING INDUSTRIAL SITES  
1971

For additional site information, contact H. B. Pribble, Mount Sterling Chamber of Commerce, Mount Sterling, Kentucky, or the Kentucky Department of Commerce, Frankfort, Kentucky.

SITE #1: ACREAGE: 15 acres  
LOCATION: .3 mile south of city limits  
HIGHWAY ACCESS: Fronts on Richmond Avenue and Fogg Pike, .2 mile west of Kentucky Route 11  
RAILROADS: Chesapeake & Ohio Railway Company bounds property on both east and south.  
WATER: Mount Sterling Water Works  
SIZE LINE: 10-inch line, 200 feet away  
GAS: Columbia Gas of Kentucky, Inc.  
SIZE MAIN: 4-inch main on site  
ELECTRICITY: Kentucky Utilities Company  
SEWERAGE: Mount Sterling Sewerage Department  
OWNERSHIP: Private

SITE #2: ACREAGE: 36 acres  
LOCATION: .8 mile south of city limits  
HIGHWAY ACCESS: Gravel access road onto site from Fogg Pike; Kentucky Route 11 one-half mile away  
RAILROADS: Chesapeake & Ohio Railway bounds property on south.  
WATER: Mount Sterling Water Works  
SIZE LINE: 10-inch line, 600 feet away  
GAS: Columbia Gas of Kentucky, Inc.  
SIZE MAIN: 4-inch main, 600 feet away  
ELECTRICITY: Kentucky Utilities Company  
SEWERAGE: Mount Sterling Sewerage Department  
OWNERSHIP: Private

SITE #3: ACREAGE: 40 acres  
LOCATION: .9 mile south of city limits  
HIGHWAY ACCESS: Fronts on Fogg Pike, one-half mile from Kentucky Route 11  
RAILROADS: Chesapeake & Ohio Railway Company bounds property on south.  
WATER: Mount Sterling Water Works  
SIZE LINE: 10-inch line 1,500 feet away  
GAS: Columbia Gas of Kentucky, Inc.  
SIZE MAIN: 4-inch main on site  
ELECTRICITY: Kentucky Utilities Company  
SEWERAGE: Mount Sterling Sewerage Department  
OWNERSHIP: Private

SITE #4: ACREAGE: 40 acres  
LOCATION: 1 mile south of Mount Sterling  
HIGHWAY ACCESS: Property fronts on Fogg Pike, .7 mile from Kentucky Route 11  
RAILROADS: Chesapeake & Ohio Railway Company bounds property on south.  
WATER: Mount Sterling Water Works  
SIZE LINE: 10-inch line, 1,800 feet away  
GAS: Columbia Gas of Kentucky, Inc.  
SIZE MAIN: 4-inch main on site  
ELECTRICITY: Kentucky Utilities Company  
SEWERAGE: Mount Sterling Sewerage Department  
OWNERSHIP: Private

SITE #5: ACREAGE: 44.5 acres  
LOCATION: .35 mile from south city limits  
HIGHWAY ACCESS: West boundary fronts on U. S. 460  
RAILROADS: Not rail served  
WATER: Mount Sterling Water Works  
SIZE LINE: 6-inch line, 1,400 feet away to the west and 1,800 feet away to the north  
GAS: Columbia Gas of Kentucky, Inc.  
SIZE MAIN: 6-inch main on site  
ELECTRICITY: Kentucky Utilities Company  
SEWERAGE: Mount Sterling Sewerage Department  
OWNERSHIP: Private

SITE #6: ACREAGE: 5 acres  
LOCATION: Within south city limits  
HIGHWAY ACCESS: Property bounds Kentucky Route 11 on east and a city street on north.  
RAILROADS: Not rail served  
WATER: Mount Sterling Water Works  
SIZE LINE: 10-inch and 8-inch lines on property  
GAS: Columbia Gas of Kentucky, Inc.  
SIZE MAIN: 6-inch main on site  
ELECTRICITY: Kentucky Utilities Company  
SEWERAGE: Mount Sterling Sewerage Department  
OWNERSHIP: Private

SITE #7: ACREAGE: 130 acres  
LOCATION: 1 1/2 miles northeast of city limits  
HIGHWAY ACCESS: South boundary fronts on U. S. 60  
RAILROADS: Chesapeake & Ohio Railway Company across U. S. 60 parallel to south boundary  
WATER: Mount Sterling Water Works  
SIZE LINE: 10-inch line on site  
GAS: Columbia Gas of Kentucky, Inc.  
SIZE MAIN: 6-inch and 8-inch mains on site  
ELECTRICITY: Kentucky Utilities Company  
SEWERAGE: Mount Sterling Sewerage Department  
OWNERSHIP: Private

SITE #8: ACREAGE: 17 acres  
LOCATION: 1 1/2 miles northeast of city limits  
HIGHWAY ACCESS: South boundary fronts on Kentucky Route 647 and paved road runs adjacent to west boundary.  
RAILROADS: Chesapeake & Ohio Railway Company bounds property on north.  
WATER: Mount Sterling Water Works  
SIZE LINE: 10-inch line, 300 feet away to the north and west  
GAS: Columbia Gas of Kentucky, Inc.  
SIZE MAIN: 6-inch main, 200 feet away  
ELECTRICITY: Kentucky Utilities Company  
SEWERAGE: Mount Sterling Sewerage Department  
OWNERSHIP: Private

SITE #9: ACREAGE: 20 acres  
LOCATION: 1.7 miles northeast of city limits  
HIGHWAY ACCESS: South boundary fronts on Kentucky Route 647.  
RAILROADS: Chesapeake & Ohio Railway Company bounds property on the north.  
WATER: Mount Sterling Water Works  
SIZE LINE: 10-inch line, 200 feet away  
GAS: Columbia Gas of Kentucky, Inc.  
SIZE MAIN: 6-inch and 8-inch mains 150 feet away  
ELECTRICITY: Kentucky Utilities Company  
SEWERAGE: Mount Sterling Sewerage Department  
OWNERSHIP: Private







INDUSTRIAL RESOURCES  
MT. STERLING, KENTUCKY

Prepared by  
The Kentucky Department of Commerce  
in cooperation with  
The Mt. Sterling-Montgomery County Chamber of Commerce

1971

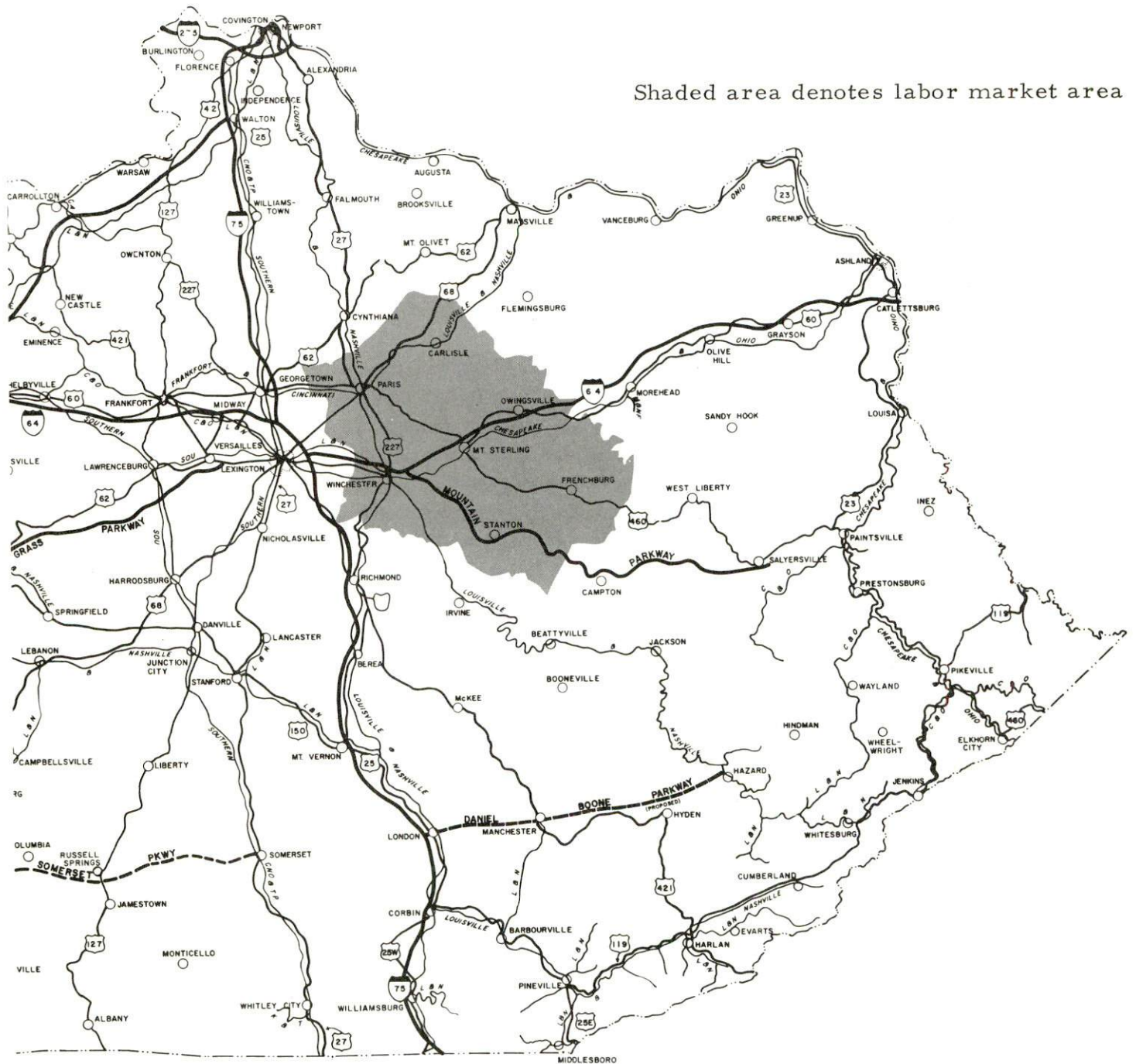
# TABLE OF CONTENTS

<u>Chapter</u>	<u>Page</u>
INDUSTRIAL SITES . . . . .	i
MT. STERLING, KENTUCKY - A RESOURCE PROFILE . . . . .	1
THE LABOR MARKET . . . . .	5
Population Trends . . . . .	5
General Employment Characteristics, 1969. . . . .	5
Manufacturing Employment Trends by Industry . . . . .	5
Major Mt. Sterling Manufacturing Firms, Their Products and Employment . . . . .	6
Wage Rates for Selected Occupations . . . . .	6
Labor Organizations . . . . .	10
Current and Future Labor Supply . . . . .	10
Total Personal Income . . . . .	10
Per Capita Personal Income. . . . .	10
EDUCATION . . . . .	11
Public Schools . . . . .	11
Vocational Schools . . . . .	11
Colleges and Universities. . . . .	12
TRANSPORTATION . . . . .	13
Rail . . . . .	13
Truck Service . . . . .	13
Air. . . . .	15
Bus. . . . .	15
Taxi . . . . .	15
Rental Services . . . . .	15
POWER AND FUEL . . . . .	16
Electricity . . . . .	16
Natural Gas . . . . .	16
WATER AND SEWERAGE. . . . .	17
Water. . . . .	17
Sewerage . . . . .	17



<u>Chapter</u>	<u>Page</u>
LOCAL GOVERNMENT . . . . .	18
City . . . . .	18
County . . . . .	18
Assessed Value of Property, 1970 . . . . .	18
Local General Property Tax Rates Per \$100 of Assessed Valuation, 1970 . . . . .	18
Planning and Zoning . . . . .	19
Safety . . . . .	19
Police . . . . .	19
Fire . . . . .	19
Rescue Service . . . . .	19
Sanitation . . . . .	19
HEALTH. . . . .	20
Hospitals. . . . .	20
Nursing Homes . . . . .	20
Public Health. . . . .	20
OTHER LOCAL FACILITIES . . . . .	21
Communications . . . . .	21
Library Services . . . . .	21
Religious Institutions . . . . .	21
Financial Institutions . . . . .	22
Hotels and Motels . . . . .	22
Clubs and Organizations . . . . .	22
RECREATION . . . . .	23
Local . . . . .	23
Area . . . . .	23
AGRICULTURE - NATURAL RESOURCES - CLIMATE . . . . .	25
Agriculture . . . . .	25
Natural Resources . . . . .	25
Climate . . . . .	25
HISTORY. . . . .	26

# MT. STERLING LABOR MARKET AREA



10 0 10 20 30 40  
GRAPHIC SCALE IN MILES

## MT. STERLING, KENTUCKY - A RESOURCE PROFILE

### Location

Mt. Sterling, the county seat of Montgomery County, is located on the eastern edge of Kentucky's Blue Grass Region. Mt. Sterling's location, 40 miles east of Lexington, 102 miles east of Louisville, and 119 miles southeast of Cincinnati, gives the city the economic advantages of the Blue Grass, along with the massive labor supply of Kentucky's Appalachian Region.

Mt. Sterling had a 1970 population of 5,083 and Montgomery County had a population of 15,364.

### The Economic Framework

Total employment in Montgomery County averaged 6,200 in 1969 with manufacturing providing 2,400 of these jobs. During the decade of the 1960's manufacturing employment increased by 2,165 jobs or approximately 365 percent. Major industrial products are knit garments, men's shirts, coveralls and dungarees, home dishwashers, and appliance motors.

Per capita income in the county in 1969 was \$2,850, an increase of over 130 percent since 1959. Total personal income for the county has increased by over 165 percent since 1959.

Mt. Sterling is the hub of a labor market area that includes Montgomery and the six adjoining counties. Area employment totals 30,200 jobs. Area industrial employment has increased by over 125 percent in the past decade with sharpest gains in the apparel, textiles, and machinery and metal products industries.

Despite important industrial gains in recent years the area still has a deficit of 894 manufacturing jobs when measured against the national industrial employment-population ratio. This indicates an area where the potential for additional manufacturing production is good.

### Resources for Growth

1. There is a current labor supply of 3,200 men and 2,600 women available for industrial jobs in the labor market area. In addition, 5,310 young men and 4,970 young women will become 18 years of age by 1977 and potentially available for work.



2. The local transportation capability is good. The Chesapeake and Ohio Railway Company provides Mt. Sterling with rail service. There is easy access to Interstate 64 and Interstate 75 which are major highway arteries into the industrial south, midwest, and east. The Mt. Sterling-Montgomery County Airport provides the local area with light aircraft service. Commercial air service is available at Blue Grass Field in Lexington, only 40 miles away.

3. Energy - Natural gas is supplied to Mt. Sterling by Columbia Gas of Kentucky, Inc., and electricity by Kentucky Utilities Company.

4. Industrial sites - Mt. Sterling has nine industrial sites ranging in size from 5 to 130 acres. There are a total of 347 acres available for industrial use in Mt. Sterling.

5. Education is an important growth asset for Mt. Sterling. The area is served by two school systems, the Mt. Sterling Independent School System and the Montgomery County School System. Within a 50-mile radius of Mt. Sterling are four universities, two senior colleges, one junior college and a technical institute.

#### Community Programs for Improvement

Recent community improvements - Belk-Simpson, a chain department store, has recently opened on Main Street. Two of the local banks have just completed expansion and improvement. A new parking lot has just been opened on West Locust Street to accommodate 50 cars, and additional parking facilities are under consideration. A picnic shelter and recreation area have been added at the airport, and Tennessee Gas Company is preparing to build a hangar for a small jet plane and the airport will provide jet fuel. The Mt. Sterling Independent School System has purchased two tracts of land adjoining the elementary school. The Montgomery County School System has added two portable classroom units to accommodate 40 children in the Head Start Program at Camargo. In November the local hospital opened a 40-bed extended care facility. A modern sewer system has been installed on Tenny Hill at a cost of \$96,000. In 1970 the water system expanded from a 1.5 million gallon-per-day treatment plant to a 2.25 million gallon-per-day facility and installed partial equipment so the plant can later be expanded to a 3 million gallon-per-day facility. A. O. Smith Corporation and Hobart Manufacturing Company, two of Mt. Sterling's largest firms, have expanded and increased employment by approximately 150 and 100 employees, respectively.

Community improvements underway - A study has been made on urban transportation and improvements are underway. A comprehensive city-county plan will go into effect this year. Plans have been made for a bypass around the city to the west, a section of two-lane highway has been completed and the rest of the bypass is in various stages of study.

The city has started a program to tear down and remove all uninhabitable dwellings in the city. The Ywindson Estates Shopping Center is under construction in the south section of the city. Thirteen subdivisions are in various stages of construction in the immediate area, and one of the new subdivisions has all underground electric and telephone service. The Mt. Sterling Independent School System is starting a system-wide kindergarten program. The city is in the process of annexation west and north of town and the fire department will extend fire protection to these areas. The city is building a new sewer line to serve Brookbead subdivision and the area in the vicinity of the new bypass. The local hospital is in the process of establishing a dataphone service which would provide immediate interpretation of EKG by a specialist in Lexington.

Community improvements planned - The city school system plans to build a new junior high school building on a site near the present building. The county school system plans to purchase four relocatable classrooms to add to elementary facilities. Land has been purchased for a proposed shopping center to be located near the bypass. The local hospital plans to add a physical therapy facility. The city plans to start a street improvement program and to build a new playground facility in the southern section of town covering four to six acres of land. The city also has an application for 120 units of Federal housing, and Hinkston Creek which flows through the city is to be cleaned and the banks sown with grass. The sewerage department has made plans for a \$700,000 project to improve sewer lines and main trunk lines serving north and south Hinkston Creek area, and also plans a \$5,000 to \$6,000 project to improve storm sewer facilities. The water works plans to extend water mains into five new subdivisions that are now in the process of being built. It is expected that the water works will lay approximately 1,500 feet of six-inch line and approximately 2,200 feet of eight-inch line. Columbia Gas of Kentucky, Inc., plans to lay mains to several new subdivisions.

#### Recreation, Entertainment, and Livability

There are numerous facilities for local recreation in Mt. Sterling. The Montgomery County Recreation Park, the American Legion Park, and the Mt. Sterling Golf and Country Club provide various recreational activities.

Within convenient driving distance from Mt. Sterling are: Fort Boonesborough State Park, Carter Caves State Resort Park, Blue Licks Battlefield State Park, Natural Bridge State Resort Park, Daniel Boone National Forest, Cave Run Reservoir, and Lexington.



Lexington, 40 miles distant, offers the full spectrum of sophisticated entertainment, cultural and sporting events. The finest thoroughbred and harness racing in the world is available at Keeneland Race Course and the Red Mile Trotting Track at several meets each year. The University of Kentucky provides nine months of sports excitement each year. The Central Kentucky Concert and Lecture Association presents an annual subscription series which brings the city world famous groups and individuals in the arts and sciences. There are also three symphony orchestras, theater groups which produce more than twenty plays each year, and scores of free concerts, lectures and art exhibits at Transylvania University and the University of Kentucky.

Area cultural events, tourist events, and tourist attractions include the Carlisle Blackberry Festival at Carlisle, Kentucky, the American Folk Song Festival at the Carter Caves State Resort Park, and court day at Mt. Sterling.



# THE LABOR MARKET

## POPULATION TRENDS <sup>1/</sup>

Area	Population			Percent Change	
	1970	1960	1950	1960-70	1950-60
Mt. Sterling	5,083	5,370	5,294	- 5.3	+ 1.4
Labor Market Area	85,427	79,455	79,227	+ 7.5	+ 0.3
Montgomery County	15,364	13,461	13,025	+14.1	+ 3.3
Bath County	9,235	9,114	10,410	+ 1.3	-12.4
Bourbon County	18,476	18,178	17,752	+ 1.6	+ 2.4
Clark County	24,090	21,075	18,898	+14.3	+11.5
Menifee County	4,050	4,276	4,798	- 3.3	-10.9
Nicholas County	6,508	6,677	7,532	- 2.5	-11.4
Powell County	7,704	6,674	6,812	+15.4	- 2.0

## GENERAL EMPLOYMENT CHARACTERISTICS, 1969 <sup>2/</sup>

Major Employment Group	Employment	
	Montgomery County	Labor Market Area
TOTAL	6,200	30,200
Agricultural	1,000	6,400
Nonagricultural	5,200	23,800
Manufacturing	2,400	7,447
Trade and Services	1,289	5,156
Government	500	3,550

## MANUFACTURING EMPLOYMENT TRENDS BY INDUSTRY SEPTEMBER 1970 AND 1960 <sup>3/</sup>

Industry	Montgomery County			Labor Market Area		
	1970	1960	%Change	1970	1960	%Change
TOTAL	2,761	595	+364.0	7,593	3,339	+127.4
Food & Kindred Products	45	151	- 70.2	96	223	- 57.0
Tobacco	10	4	+150.0	15	44	- 65.9
Apparel, Textiles, Leather	731	368	+ 98.6	2,668	1,550	+ 72.1
Lumber & Furniture	0	10	0	525	260	+102.0
Printing, Publishing, Paper	12	8	+ 50.0	98	75	+ 30.7
Chemicals, Petroleum, Coal, Rubber	0	0	0	172	24	+616.7
Stone, Clay & Glass	47	54	- 13.0	91	124	- 26.6
Primary Metals	0	0	0	504	220	+129.1
Machinery & Metal Products	1,916	0	0	3,409	711	+379.5
Other	0	0	0	15	108	- 86.1

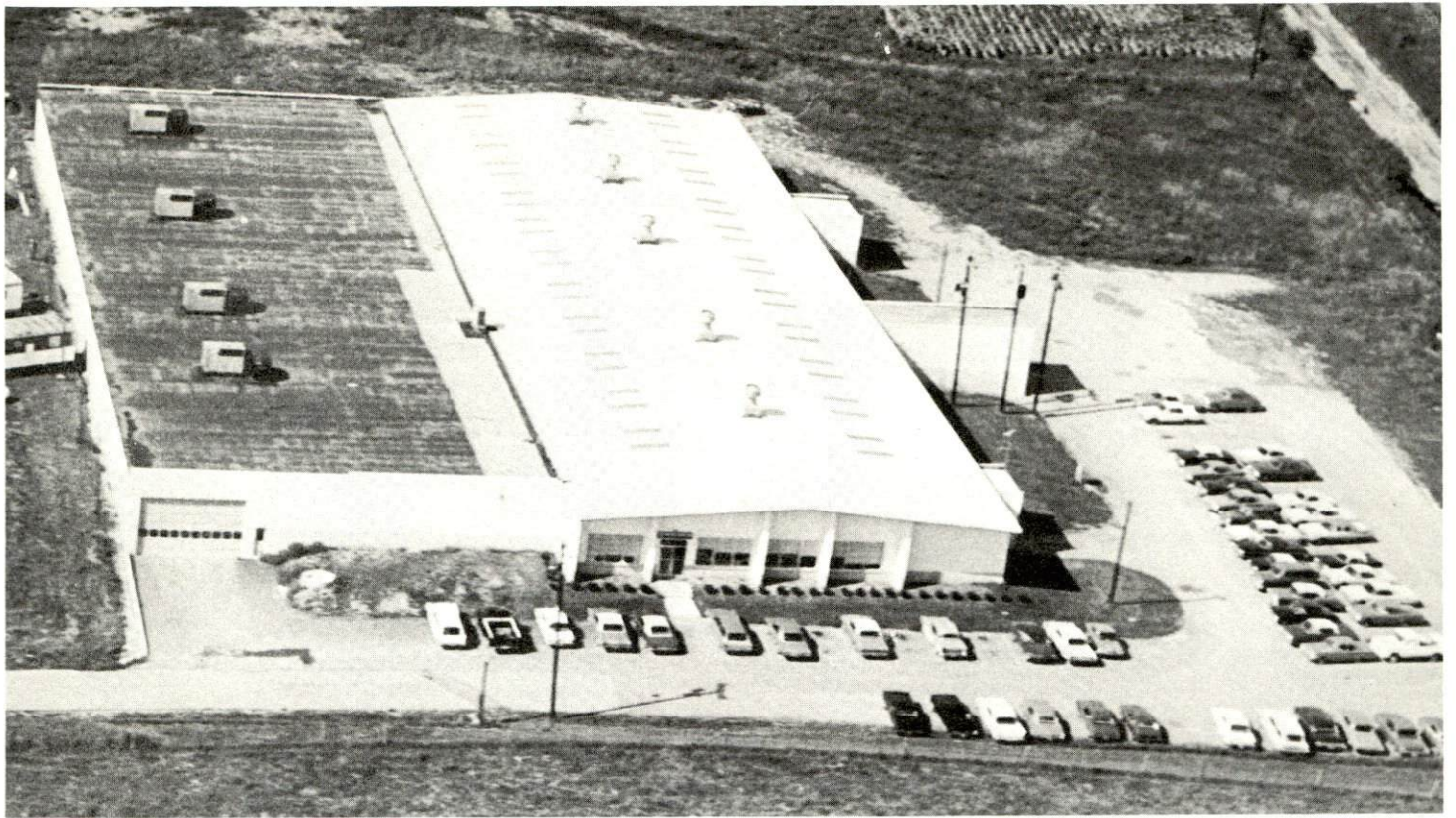
MAJOR MT. STERLING MANUFACTURING FIRMS,  
THEIR PRODUCTS AND EMPLOYMENT <sup>4/</sup>

Firm	Product	Employment		
		Total	Male	Female
Blue Grass Industries, Inc.	Men's shorts, knit garments	425	31	394
Clay Tobacco Company	Tobacco redrying	336	250	86
Cowden Manufacturing Co.	Men's coveralls, dungarees	390	100	290
Highway Concrete Pipe, Inc.	Concrete culvert pipe	20	19	1
The Hobart Manufacturing Co.	Home dishwashers	620	540	80
A. O. Smith Corporation	Hermatic and appliance motors	1,020	640	380
Trojan, Inc.	Helical armor, bedding, mattresses, electro-mechanical sub- assembly	167	75	92

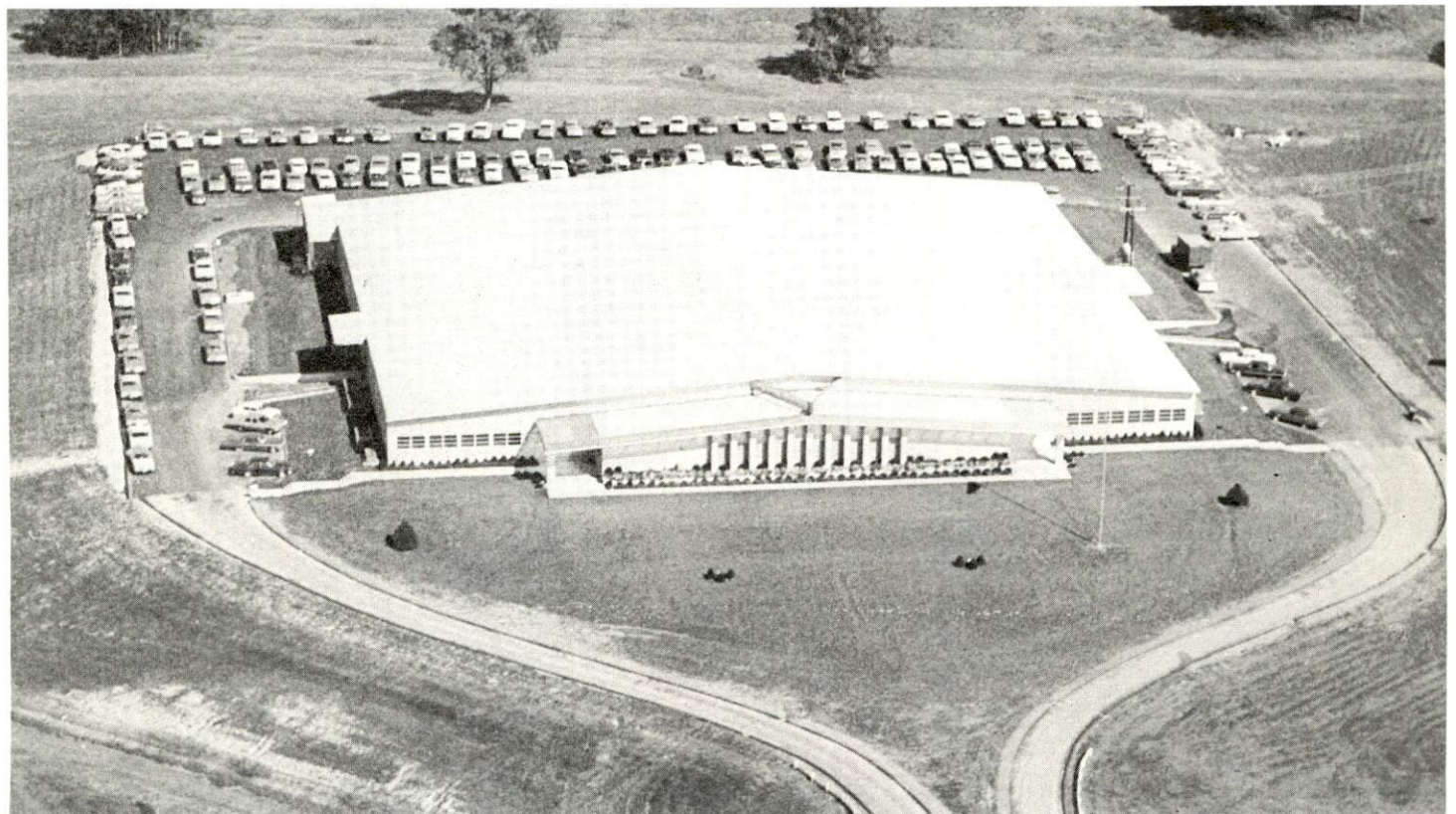
WAGE RATES FOR SELECTED OCCUPATIONS  
MT. STERLING, KENTUCKY <sup>5/</sup>

Classification	Wages Per Hour	
	Starting	Prevailing
<u>Production Employees</u>		
Assembler	\$1.70	\$2.00
Inspector	2.05	2.30
Production Laborer	1.60	1.85
Welder, Arc or Acetylene (Class-A)	1.95	2.25
<u>Service Employees</u>		
Electrician (Class-A)	\$3.00	\$3.50
Laborer	1.65	2.00
Machinist	3.00	3.50
Mechanic, Maintenance	3.00	3.50
Truck Driver, Industrial (Class-A)	1.75	2.00
<u>Office Employees</u>		
File Clerk	\$1.65	\$1.85
Receptionist	1.65	2.00
Secretary	2.00	2.50
Typist	1.75	2.00



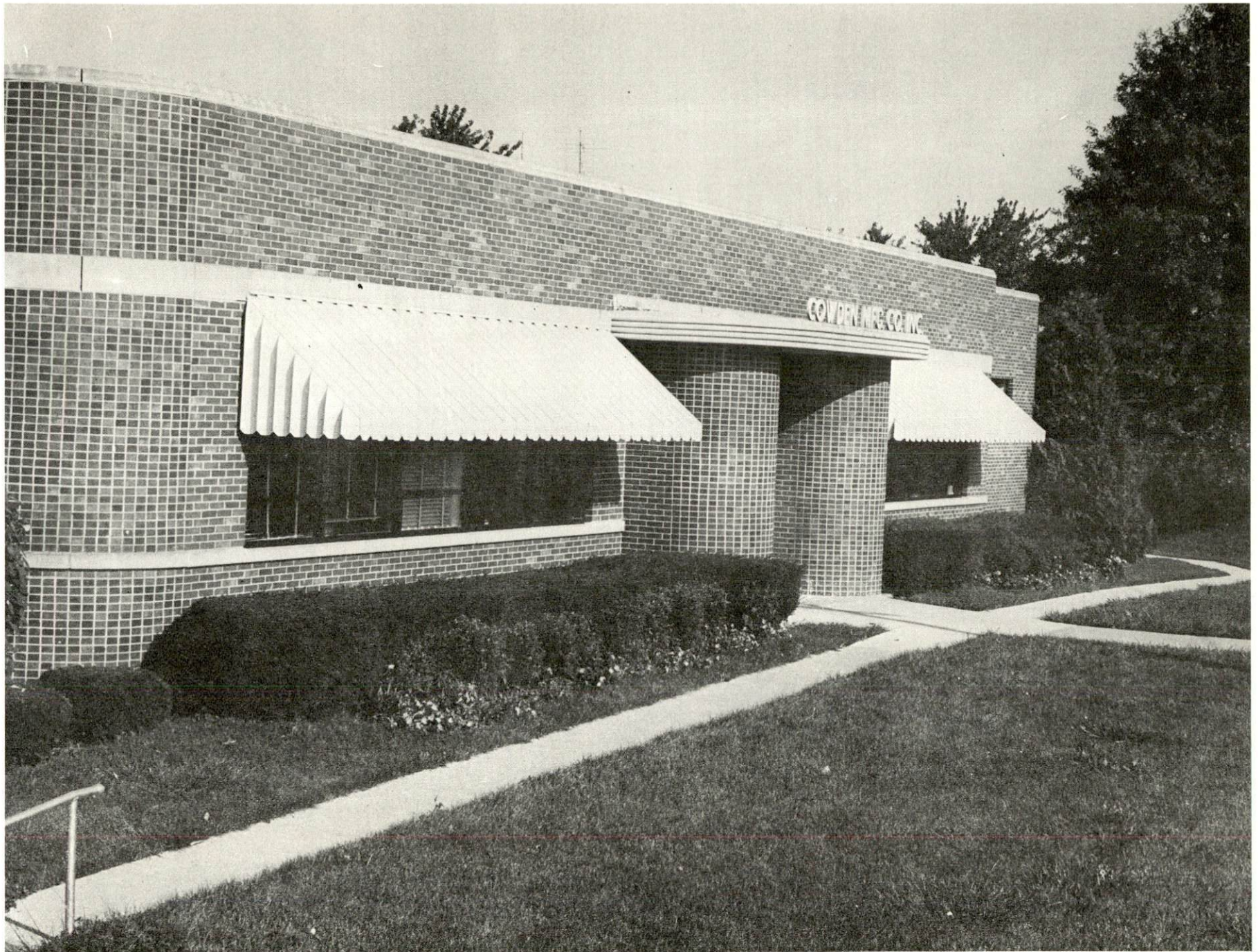


TROJAN, INC.



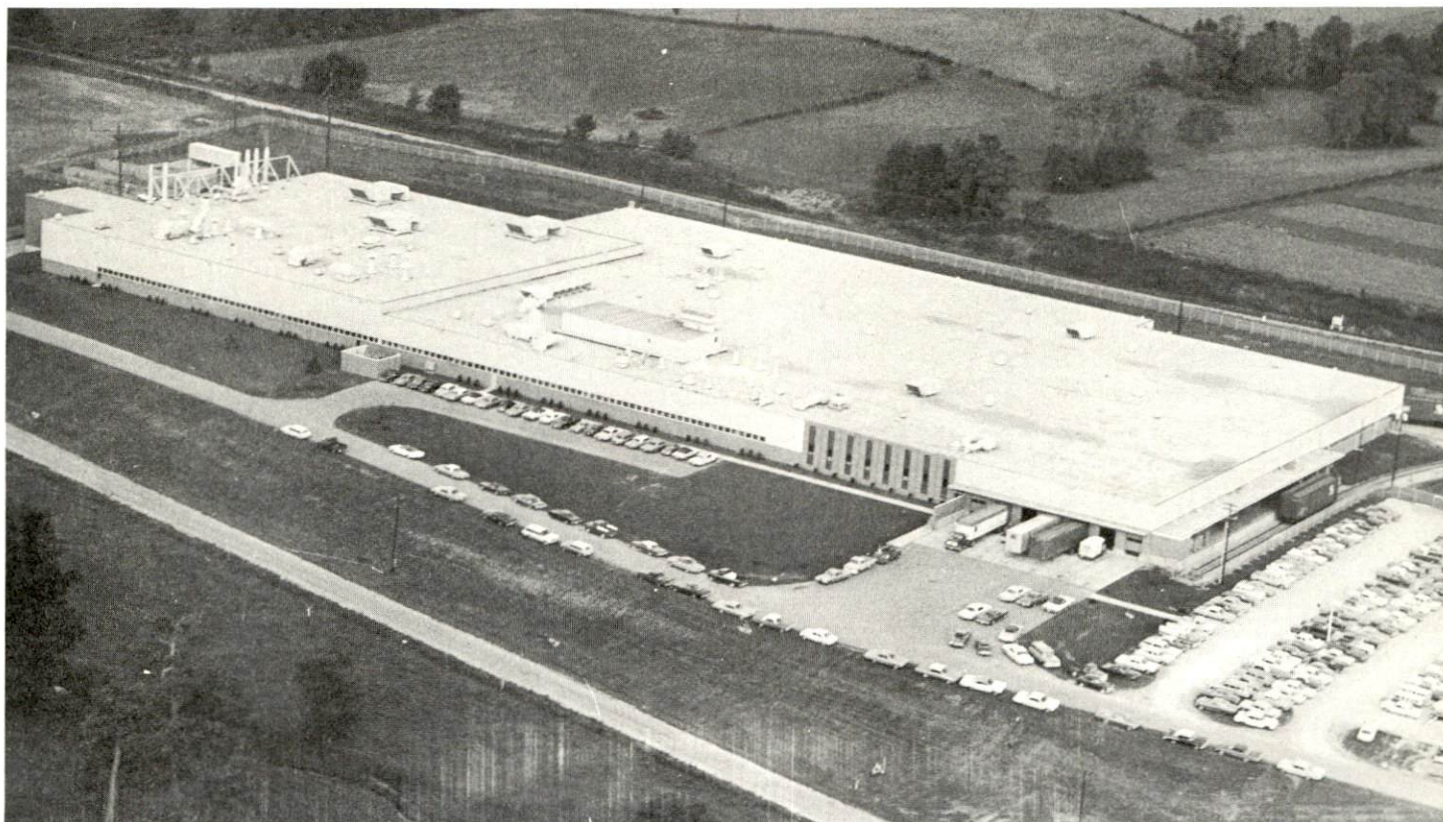
BLUE GRASS INDUSTRIES



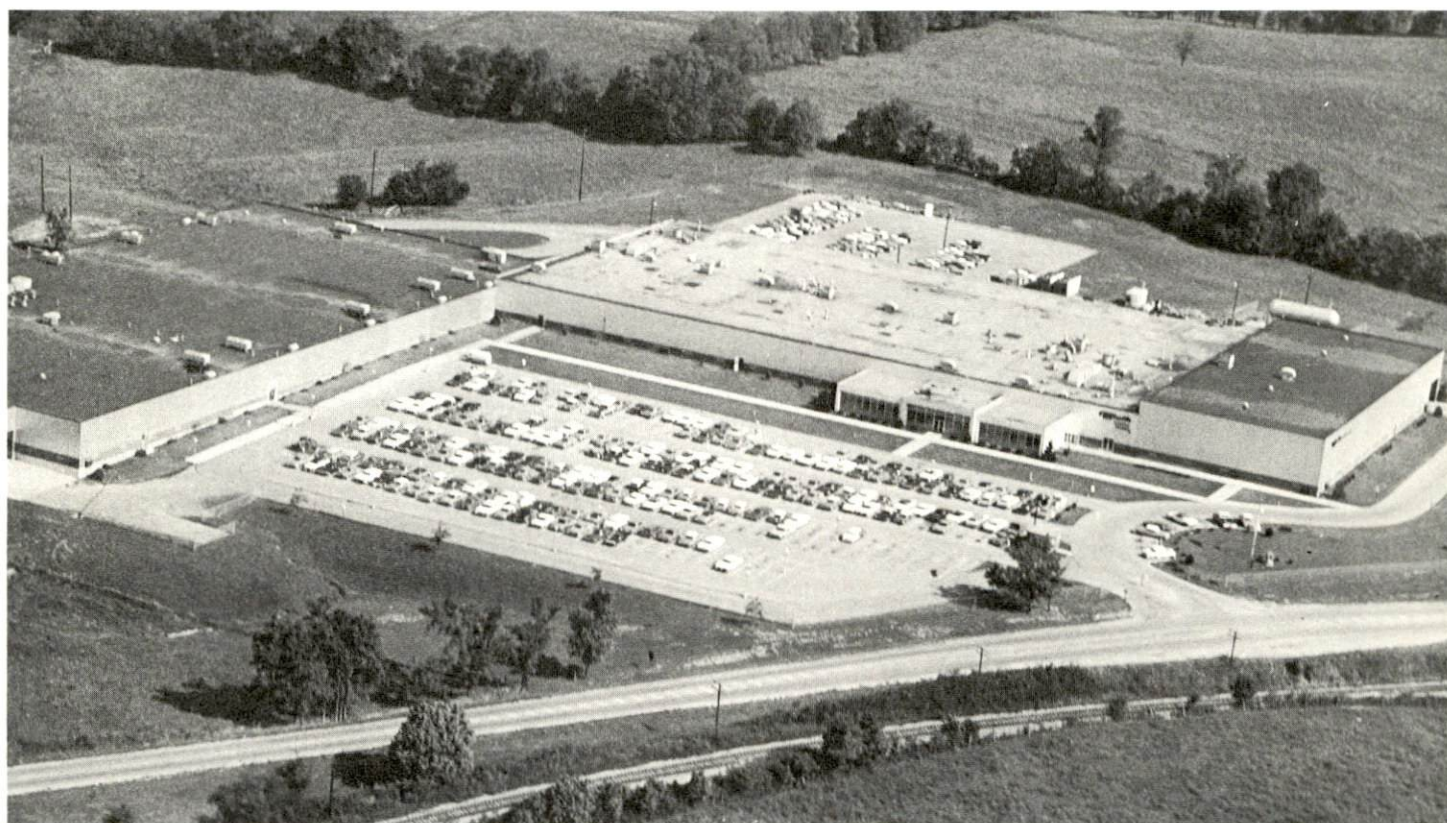


COWDEN MANUFACTURING COMPANY





HOBART MANUFACTURING COMPANY



A. O. SMITH CORPORATION



# LABOR ORGANIZATIONS

<u>Union</u>	<u>Representing Workers at:</u>
International Brotherhood of Teamsters, Chauffeurs, Warehousemen and Helpers of America	Cowden Manufacturing Company
International Union, United Automobile, Aerospace and Agricultural Implement Workers of America	Hobart Manufacturing Company
International Brotherhood of Electrical Workers, AFL-CIO	A. O. Smith Company

## CURRENT AND FUTURE LABOR SUPPLY - MT. STERLING LABOR MARKET AREA

<u>Area</u>	<u>Current Labor Supply, 1971 <sup>6/</sup></u>			<u>Future Labor Supply by 1977 <sup>7/</sup></u> <u>(Becoming 18 Years of Age)</u>		
	<u>Total</u>	<u>Male</u>	<u>Female</u>	<u>Total</u>	<u>Male</u>	<u>Female</u>
Labor Market Area						
Area	5,808	3,206	2,602	10,280	5,313	4,967
Montgomery	794	418	376	1,923	998	925
Bath	1,491	1,001	490	1,097	569	528
Bourbon	606	192	414	2,193	1,135	1,058
Clark	833	396	437	2,756	1,389	1,367
Menifee	710	485	225	530	293	237
Nicholas	473	237	236	751	397	354
Powell	901	477	424	1,030	532	498

## TOTAL PERSONAL INCOME <sup>8/</sup>

<u>Area</u>	<u>1969*</u>	<u>1959</u>	<u>% Change</u>
Montgomery County	\$ 42,440,000	\$ 16,003,000	+165.2
Labor Market Area	214,138,000	94,912,000	+ 94.9
Kentucky	9,202,000,000	4,655,000,000	+ 97.7

## PER CAPITA PERSONAL INCOME <sup>9/</sup>

<u>Area</u>	<u>1969*</u>	<u>1959</u>	<u>% Change</u>
Montgomery County	\$2,850	\$1,224	+132.8
Labor Market Area	\$3,270 to 1,290	\$1,436 to 593	NA
Kentucky	2,847	1,552	+ 83.4

\* Preliminary figures.

## EDUCATION

### Public Schools

	<u>Mt. Sterling Independent</u>	<u>Montgomery County</u>
Total Enrollment	1,178	2,620
Elementary	659	1,913
High School	519	707
Student-Teacher Ratio	27-1	27-1
Elementary	28-1	27-1
High School	27-1	27-1
State Rating of High School	Standard	Standard
Other Accreditations	Southern Association of Colleges and Schools	
Percent High School		
Graduates to College	54.9	35.5
Current Expenditures Per Pupil	\$433.62	\$430.36
Bonded Indebtedness, June 30, 1970	\$404,000	\$1,004,000

### Vocational Schools

	<u>Nearest Area School</u>	<u>Nearest Extension Center</u>
	Central Kentucky Area Vocational School	Montgomery County Extension Center of Ashland Area Vocational School
Location	Lexington	Mt. Sterling
Miles Distant	40	
Curriculum	General Clerical Secretarial-Steno Practical Nursing Electronics (Communication) Auto Body Repair Auto Mechanics Commercial Foods Drafting, Electricity Machine Shop Office Machine Repair Printing, Welding Radio & TV Repair Sheet Metal	Accounting Jr. Management General Clerical Secretarial-Steno Auto Mechanics Carpentry Drafting Electricity



## Colleges and Universities

<u>Name</u>	<u>Area - Within 50 Miles</u>		<u>Highest Degree Conferred</u>
	<u>Location</u>	<u>Enrollment</u>	
University of Kentucky	Lexington	17,763	Ph.D., M.D., D.M.D., J.D.
Eastern Kentucky University	Richmond	9,602	Masters
Transylvania University	Lexington	859	Masters
Morehead State University	Morehead	6,030	Masters
Berea College	Berea	1,400	Baccalaureate
Georgetown College	Georgetown	1,366	Masters
Southeastern Christian Junior College	Winchester	148	Associate
Lexington Technical Institute	Lexington	*	Associate

---

\*Enrollment included in figure for University of Kentucky.

## TRANSPORTATION

### Rail

Line serving Mt. Sterling - Chesapeake and Ohio Railway Company

Services - Team tracks, private track, carload freight, switching

### RAILWAY TRANSIT TIME FROM MT. STERLING, KENTUCKY, TO: 10/

City	No. of Days		City	No. of Days	
	CL			CL	
Atlanta, Ga.	3		Los Angeles, Calif.	6	
Birmingham, Ala.	3		Louisville, Ky.	1	
Chicago, Ill.	1		Nashville, Tenn.	2	
Cincinnati, Ohio	1		New Orleans, La.	3	
Cleveland, Ohio	3		New York, N. Y.	3	
Detroit, Mich.	2		Pittsburgh, Pa.	3	
Knoxville, Tenn.	3		St. Louis, Mo.	3	

### Truck Service

#### Company

#### Home Office

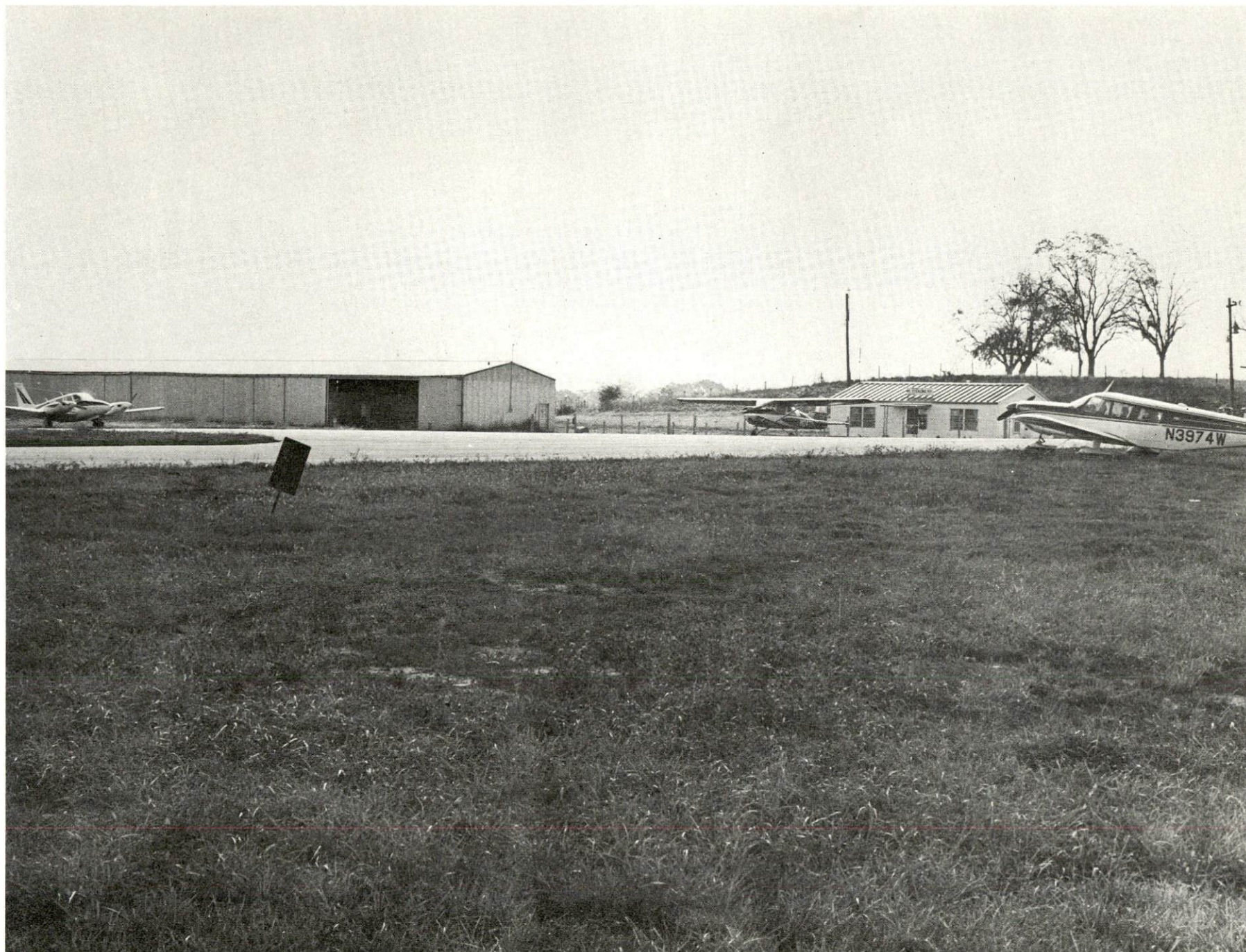
Cooper-Jarrett, Inc.  
Ecklar-Moore Express, Inc.  
McLean Trucking Company  
Point Express, Inc.

Orange, New Jersey  
Lexington, Kentucky  
Winston-Salem, North Carolina  
Charleston, West Virginia

### HIGHWAY MILES AND TRUCK TRANSIT TIME IN DAYS FROM MT. STERLING, KENTUCKY, TO SELECTED MARKET CENTERS

City	Highway Miles	Delivery Time <u>11/</u>		City	Highway Miles	Delivery Time	
		LTL	TL			LTL	TL
Atlanta, Ga.	425	3	2	Los Angeles, Calif.	2,145	6	5
Birmingham, Ala.	448	3	2	Louisville, Ky.	102	Overnight	
Chicago, Ill.	412	2	1	Nashville, Tenn.	261	2	1
Cincinnati, Ohio	119	Overnight		New Orleans, La.	812	3	2
Cleveland, Ohio	409	2	1	New York, N. Y.	667	3	2
Detroit, Mich.	388	2	1	Pittsburgh, Pa.	363	2	1
Knoxville, Tenn.	231	2	1	St. Louis, Mo.	366	2	1





MT. STERLING - MONTGOMERY COUNTY AIRPORT



Air

	<u>Local</u>	<u>Nearest Commercial</u>
	Mt. Sterling-Montgomery County Airport	Blue Grass Field
Location:	Mt. Sterling	Lexington, 40 miles distant
Runways:	1 paved	3 paved
Length:	2,800 ft.	6,500 ft. ; 3,500 ft. ; 3,500 ft.
Traffic Control:	Wind sock	Tower
Lighting:	Rotating beacon	Approach lighting system, beacon, runways and obstruction lighted
Services:	80 and 100 octane gasoline, charter, flight instruc- tion, tie down, hangar, and picnic shelter	80, 100, and 145 octane; jet fuel; major A & E re- pairs; storage; restaurant; Weather Bureau and flight instruction; charter service; taxi; U-Drive-It; Eastern, Delta, Piedmont, and Allegheny Airlines

Bus

Southern Greyhound Bus Line

Taxi

Three taxi companies

Rental Services

Truck and trailer rental service is available in  
Mt. Sterling; car rental service is available in  
Lexington, only 40 miles away.



## POWER AND FUEL

### Electricity

Company serving Mt. Sterling - Kentucky Utilities Company

Source of power - Kentucky Utilities Company

Total generating capacity - 1,215,000 KW

Industrial rates furnished by - Kentucky Utilities Company, Lexington,  
Kentucky 40501

Company serving Montgomery County - Clark Rural Electric Cooperative  
Corporation

Source of power - East Kentucky Power Cooperative

Total generating capacity - 515,000 KW

Industrial rates furnished by - Clark Rural Electric Cooperative  
Corporation, Post Office Box 748, Route 15, Winchester, Kentucky  
40391

### Natural Gas

Company serving Mt. Sterling - Columbia Gas of Kentucky, Inc.

Source of supply - Columbia Gas Transmission Company

Size of transmission lines - 30, 20, and 14 inches

Distribution lines - 2, 4, 6, 8, and 12 inches

BTU content - 1,050; Specific gravity - .6

Distribution pressure - 4 ounces to 40 pounds

Rates - Interruptible

First	1,000 MCF per month	\$0.7781 per MCF (Firm Volume)
Over	1,000 MCF per month	.6781 per MCF

Curtable Volume

\$0.5489 per MCF of Curtable Volume of gas delivered each billing month.

## WATER AND SEWERAGE

### Water

Company serving Mt. Sterling - Mt. Sterling Water Works  
Source - Slate Creek impoundment and Greenbrier Lake  
Treatment plant capacity - 2,250,000 gpd  
Average daily consumption - 1,470,540 gallons  
Peak daily consumption - 1,799,800 gallons  
Type treatment - flash mix, coagulated, settled, filtered, chlorinated,  
and fluoridated  
Storage capacity - 1,500,000 gallons; Average pressure - 80 psi  
Average temperature - 49 degrees  
Size mains - 10, 12, and 16 inches

### MONTHLY WATER RATES FOR WHOLESALE AND INDUSTRIAL CONSUMERS

Minimum Monthly Charge		
5/8 or 3/4-inch meter	\$	2.90
1-inch meter		3.50
1 1/4 or 1 1/2-inch meter		4.50
2-inch meter		5.50
3-inch meter		8.00
4-inch meter		12.00
6-inch meter		22.00

First	100 cu. ft.	\$2.90 (minimum)
Next	600 cu. ft.	.90 per 100 cu. ft.
Next	1,300 cu. ft.	.80 per 100 cu. ft.
Next	1,300 cu. ft.	.70 per 100 cu. ft.
Next	3,400 cu. ft.	.60 per 100 cu. ft.
Next	6,600 cu. ft.	.50 per 100 cu. ft.
All over 13,300 cu. ft.		.35 per 100 cu. ft.

Surface water sources - local impoundments  
Expected ground water yield - 5 gpm or less over entire county

### Sewerage

Company serving Mt. Sterling - Mt. Sterling Sewerage Department  
Design capacity - 1,200,000 gpd  
Average daily flow - 1,100,000 gallons; Treatment - primary and secondary  
Type treatment - clarifiers, drying beds, and aeration  
Treated effluent discharged into - Hinkston Creek  
Size of sanitary mains - 6 to 20 inches  
Rates - 35 percent of current monthly water bill



## LOCAL GOVERNMENT

### City

Structure - Mayor - 4-year term; 8 councilmen - 2-year terms  
Budget 1970-71 - General Fund \$330,898.59; Water and Sewer Fund - \$75,680.00  
Fees and licenses - City sticker - annual - car \$10; truck \$10 to \$30; city license - annual - set fee ranging from \$15 to \$200

### County

Structure - County Judge - 4-year term; 3 commissioners - 4-year terms  
Budget 1970-71 - General Fund \$101,260; Road Fund \$76,720

### Assessed Value of Property, 1970

<u>Classes of Property*</u>	<u>Mt. Sterling</u>	<u>Montgomery County</u>
Real Estate	\$20,236,498	\$74,627,136
Tangibles	4,410,443	20,571,389
Public Service	2,205,558	17,731,517 ('69)

### Local General Property Tax Rates Per \$100 of Assessed Valuation, 1970 <sup>12/</sup>

<u>Taxing Unit**</u>	<u>Mt. Sterling</u>	<u>Montgomery County</u>
State	\$ .015	\$ .015
County	.153	.153
School	.692	.555
City	.207	
Total	\$1.067	\$ .723

\*Property assessed at 100 percent of fair value.

\*\*Manufacturing machinery, raw materials inventories and goods in process inventories are not subject to local tax. State rate is only \$0.15 per \$100.

## Planning and Zoning

Agency - Mt. Sterling-Montgomery County Planning Commission  
Plans completed - Comprehensive Plan, Subdivision Regulations, Zoning Ordinance, Neighborhood Analysis\*, Housing Condition Survey\*  
Codes adopted - All major codes and ordinances have been adopted and are enforced.

## Safety

<u>Police</u>	<u>Mt. Sterling</u>	<u>Montgomery County</u>
Total staff	12	4
Radio-patrol cars	2	1
Other equipment	Radar equipment	Standard

## Fire

American Insurance  
Association Fire Rating  
Full-time staff  
Volunteers  
Equipment:  
1,000 gpm pumper  
750 gpm pumper  
500 gpm pumper

7  
8  
16  
1  
1  
1

## Rescue Service

Rescue service is provided by the fire department.

## Sanitation

	<u>Mt. Sterling</u>
Type service	municipal
Cost:	
residential	\$2 per month
business	\$5 to \$30 per month
Collection frequency:	
residential	twice a week
business	daily
Trash pickup	same as sanitation
Disposal method	sanitary land fill and dump

\*City only.



## HEALTH

### Hospitals

<u>General Hospital</u>	<u>Location</u>	<u>Beds</u>
-------------------------	-----------------	-------------

Mary Chiles Hospital	Mt. Sterling	47 40-bed extended care facility
----------------------	--------------	-------------------------------------

General hospital facilities - X-ray room, laboratory department, emergency room, delivery room, operating room, recovery room

Medical staff - 9 doctors (active staff), 15 registered nurses, 7 graduate licensed practical nurses, 69 nurse aides, 4 orderlies, 1 consulting radiologist, pathologist group has use of laboratory, 1 surgeon, 1 anesthesiologist, 1 consulting dietitian, 1 consulting pharmacist

### Nursing Homes

	<u>Number</u>	<u>Beds</u>
Personal care homes	2	19

### Public Health

Facility - The Montgomery County Health Department

Staff - clerk, nurse, sanitarian, and administrator

Budget 1970-71 - \$26,001

## OTHER LOCAL FACILITIES

### Communications

Telephone - South Central Bell Telephone Company  
Services - exchange

Telegraph - Western Union  
Services - office

Postal - U. S. Post Office  
Class - First  
Mail received - 3 times daily  
Mail dispatched - 3 times daily

Newspapers - Mt. Sterling Advocate                      Mt. Sterling Leader  
Weekly and circulation - 5,300                                      5,400  
Other papers received from - Lexington and Louisville, Kentucky

Radio - WMST-AM; WMST-FM  
Stations received from - Lexington, Louisville, and Winchester, Kentucky;  
and Cincinnati, Ohio

Television -  
Reception from - Lexington, Louisville, and Covington, Kentucky;  
Cincinnati, Ohio; and Huntington, West Virginia  
Kentucky Educational Television - Lexington and Richmond - Channel 46  
Morehead - Channel 38

### Library Services

Public Library - Mt. Sterling Library  
Size collection - 5,000 volumes  
Circulation, 1970 - approximately 14,000 volumes  
Services - provide community with books, magazines, records, art  
displays and provides space for club meetings

### Religious Institutions

Number of churches - 14  
Denominations - Baptist, Catholic, Christian, Church of Christ, Church  
of God, Church of Nazarene, Episcopal, Methodist, Pentecostal, and  
Presbyterian



## Financial Institutions

<u>Bank</u>	<u>Statement as of December 31, 1971</u>	
	<u>Assets</u>	<u>Deposits</u>
The Exchange Bank of Kentucky	\$ 8,992,887.60	\$8,111,208.89
Montgomery National Bank	9,812,285.36	8,961,961.80
Mt. Sterling National Bank	9,497,455.63	8,374,132.69
Traders National Bank	10,889,730.53	9,945,192.56
<u>Savings and Loan Associations</u>	<u>Assets</u>	<u>Shared Accounts</u>
Mt. Sterling Federal Savings & Loan Association	\$ 6,082,610.46	\$5,734,212.86

## Hotels and Motels

Number - 5

Units - 85

## Clubs and Organizations

Business and Civic - Chamber of Commerce, Jaycees, Kiwanis, Lions, Rotary, Ministerial Association, and Red Cross

Fraternal - American Legion, IOOF, Masonic Lodge, VFW, and Knights of Columbus

Women's - Woman's Club, DAR, Eastern Star, Homemakers, Garden Club, Rebekah, Metropolitan Club, Woman's Civic Club, American Legion Auxiliary, Daughters of the Confederacy, Beta Sigma Phi, and Tuesday Club

Youth - Boy Scouts, Girl Scouts, Cub Scouts, Brownies, FFA, FHA, 4-H, and Beta Club

Other - Sid Calk Lake, Inc.

## RECREATION

### Local

#### Public Recreation Facilities

Supervised program - Little League baseball  
Park - 1  
Playgrounds - 3  
Swimming pool - 1  
Tennis courts - 4  
Baseball diamonds - 2  
Football fields - 2

#### Private Recreational Facilities

Country club - Mt. Sterling Golf and Country Club  
Golf course - 1  
Swimming pool - 1  
Drive-In theaters - 2  
Bowling lane - 1  
Other - 1 lake

### Area (Within 60 miles)

Daniel Boone National Forest  
Fort Boonesborough State Park  
Carter Caves State Resort Park (American Folk Song Festival)  
Blue Licks Battlefield State Park  
Natural Bridge State Resort Park  
Cave Run Reservoir  
Carlisle Blackberry Festival at Carlisle, Kentucky  
Court Day at Mt. Sterling

Lexington - Thoroughbred and harness racing at Keeneland Race Course and the Red Mile Trotting Track; Art exhibits, drama production, concerts, and lectures and collegiate athletics are provided by the University of Kentucky and Transylvania University.





MT. STERLING GOLF AND COUNTRY CLUB



# AGRICULTURE - NATURAL RESOURCES - CLIMATE

## Agriculture 13/

	<u>Montgomery County</u>	<u>Labor Market Area</u>
Total land area (acres)	130,560	1,047,680
Percent of area in farm land	88.9	77.1
Number of farms	1,068	6,462
Average size of farms (acres)	108.7	125.0
1964 value of all farm products	\$ 5,161,818	\$41,154,057
Value per farm	4,833	6,369
Total crop sales	3,105,484	21,706,334
Total livestock & livestock products	2,052,833	19,437,867
1968 agricultural production included:		
Burley tobacco (lbs.)	6,065,000	37,173,000
Corn (bu.)	193,000	1,883,000
Cattle and calves (number)	23,300	163,200
Hogs and pigs (number)	3,000	53,000
Milk production (1967) (lbs.)	13,420,000	73,455,000

## Natural Resources

Principal mineral resources	Limestone
Other mineral resources	Small amounts of natural gas, petroleum, sand and gravel
Acres of commercial forest land	18,500 (14 percent of land area)
Most abundant tree species	White oak, hickory, red oak, red cedar, ash, hard and soft maples

## Climate 14/

	<u>Montgomery County</u>
Temperature	
Annual mean (30-year record)	55.6 degrees
Average annual 1969	54.5 degrees
Record highest July, 1966+ (7-year record)	98 degrees
Record lowest January, 1966+ (7-year record)	-10 degrees
Seasonal heating degree-days (30-year record)	4,683
Precipitation	
Mean annual total (30-year record)	44.73 inches
Mean annual snow and sleet (25-year record)	16.0 inches
Total precipitation 1969	39.50 inches
Mean number days precipitation (.01 inches or more) (26-year record)	129
Average number days thunderstorms (26-year record)	47
Prevailing winds (17-year record)	South



## HISTORY

Montgomery County lies on the eastern edge of Kentucky's Blue Grass Region, covering 204 square miles of territory. The county's rolling terrain makes it well adapted for agriculture, and the soil is quite fertile. The area is well watered and drained, and there are large deposits of limestone.

The first settlers in the area included Enoch Smith, Abraham Hanks, Phillip Drake, Robert Whitley, and William Calk. Smith built the first house and planted the first crops of corn in 1776. These men, and others who came in 1779, did not find it safe to bring their families to Kentucky until the late 1780's. The county's early history was a somewhat violent one, marked by such Indian conflict as "Estill's Defeat" in 1782, in which a number of settlers were killed.

Montgomery became the state's twenty-second county in 1796 and was named for General Richard Montgomery of Revolutionary War fame, who lost his life at Quebec in 1775. Originally, the county covered an extremely large portion of eastern Kentucky, but it gradually gave up territory to form 18 other counties.

Mt. Sterling, the county seat, was established in 1792 and named for the town of Sterling, Scotland, and a large mound within the town limits called "Little Mountain." The mound, one of some twenty-five in the vicinity, was probably an Indian burial mound. The county courthouse here was burned during the Civil War, and after it was rebuilt a custom was started of holding "Court Days," a festival-like affair still held each October. A growing industrial center, Mt. Sterling had a population of over 5,000 in 1970.

In 1800, four years after its founding, Montgomery County had a population of 7,082. Fluctuations in subsequent years reflect the continual carving up of the county. By 1950, the population had reached 13,025, and by 1960, 13,461. During the 1960's industrial growth accompanied a population increase to 15,364 in 1970.

Agriculture accounted for 1,000 of the county's 6,200 employed in 1969, with burley tobacco the principal product, supplemented by corn, cattle, and hogs. Employment in manufacturing increased by approximately 365 percent between 1960 and 1970, reaching a total of 2,165. Largest of the county's firms are: A. O. Smith Corporation, Cowden Manufacturing Company, Blue Grass Industries, Clay Tobacco Company, and the Hobart Manufacturing Company.

A major transportation artery, Interstate Highway 64, serves Mt. Sterling.

Among noted citizens in Montgomery County history were Albert Harrison and John Jameson, both of whom became U. S. Senators from Missouri. Richard Apperson, who founded the Lexington and Big Sandy Railroad and was an adviser to Lincoln during the Civil War period, was a native of the county.



## SOURCES OF INFORMATION

- 1/ U.S. Department of Commerce, Bureau of the Census, Census of Population, 1950, 1960, 1970.
- 2/ Kentucky Department of Economic Security, Division of Research and Statistics.
- 3/ Kentucky Department of Economic Security, Number of Workers in Manufacturing Industries Covered by Kentucky Unemployment Insurance Law Classified by Industry and County, September 1960, September 1970.
- 4/ Kentucky Department of Commerce, 1971 Kentucky Directory of Manufacturers.
- 5/ Kentucky Department of Economic Security, Division of Employment Services, Winchester Office.
- 6/ Kentucky Department of Economic Security, Kentucky Labor Supply Estimates by County, January 1971.
- 7/ Kentucky Department of Commerce, Future Labor Supply by 1977.
- 8/ University of Kentucky, Office of Development Services and Business Research, Total Personal Income for Kentucky.
- 9/ University of Kentucky, Office of Development Services and Business Research, Per Capita Income in Kentucky.
- 10/ The Chesapeake and Ohio Railway Company; The Baltimore and Ohio Railroad Company, Baltimore, Maryland.
- 11/ Ecklar-Moore Express, Inc., Lexington, Kentucky
- 12/ Kentucky Department of Revenue, Frankfort, Kentucky.
- 13/ U.S. Department of Commerce, Bureau of the Census, Census of Agriculture, 1964. U.S. Department of Agriculture and Kentucky Department of Agriculture, Kentucky Agricultural Statistics, 1969.
- 14/ U.S. Department of Commerce, Environmental Science Services Administration, Climatological Data, 1970.

All other information was obtained from governmental offices, local businesses and organizations.