

1972

Industrial Resources: Trigg County - Cadiz

Kentucky Library Research Collections
Western Kentucky University, spcol@wku.edu

Follow this and additional works at: https://digitalcommons.wku.edu/trigg_cty



Part of the [Business Administration, Management, and Operations Commons](#), [Growth and Development Commons](#), and the [Infrastructure Commons](#)

Recommended Citation

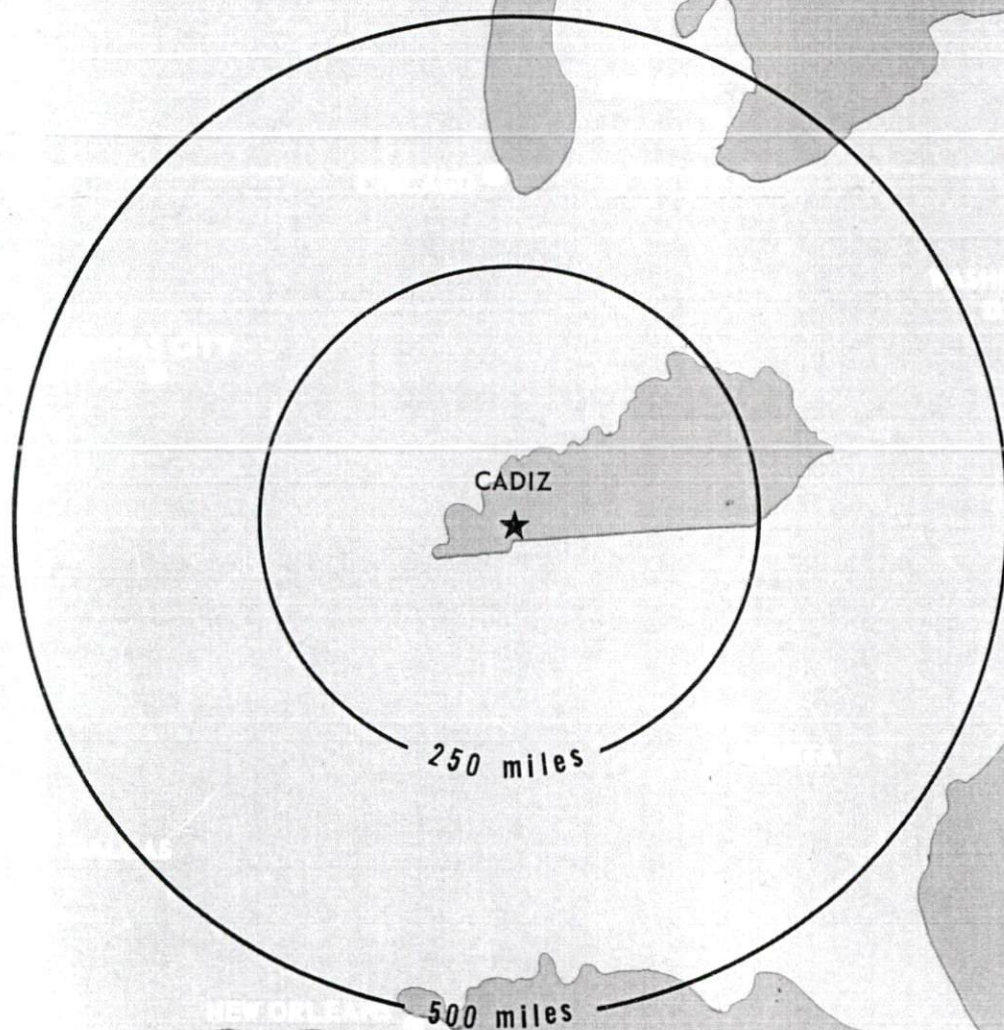
Kentucky Library Research Collections, "Industrial Resources: Trigg County - Cadiz" (1972). *Trigg County*. Paper 16.
https://digitalcommons.wku.edu/trigg_cty/16

This Report is brought to you for free and open access by TopSCHOLAR®. It has been accepted for inclusion in Trigg County by an authorized administrator of TopSCHOLAR®. For more information, please contact topscholar@wku.edu.

INDUSTRIAL
RESOURCES

Triss

CADIZ, KENTUCKY



CADIZ INDUSTRIAL SITES

1972

For more information about the following sites, contact Mr. Brent Thompson, Trigg County Farmers Bank, Cadiz, Kentucky 42211; or the Kentucky Department of Commerce, Frankfort, Kentucky 40601.

SITE #1: ACREAGE: 25 acres
LOCATION: 1 mile north of Cadiz
ZONING: None
HIGHWAY ACCESS: Fronts on Kentucky 139
RAILROADS: Not rail served
WATER: Barkley Lake Water District
SIZE LINE: 6-inch line on site
GAS: Western Kentucky Gas Company
SIZE MAIN: 4-inch IP main 800 feet from site
ELECTRICITY: Pennyrile RECC
SEWERAGE: Cadiz Sewer Department
SIZE LINE: 8-inch line 800 feet from site
OWNERSHIP: Private

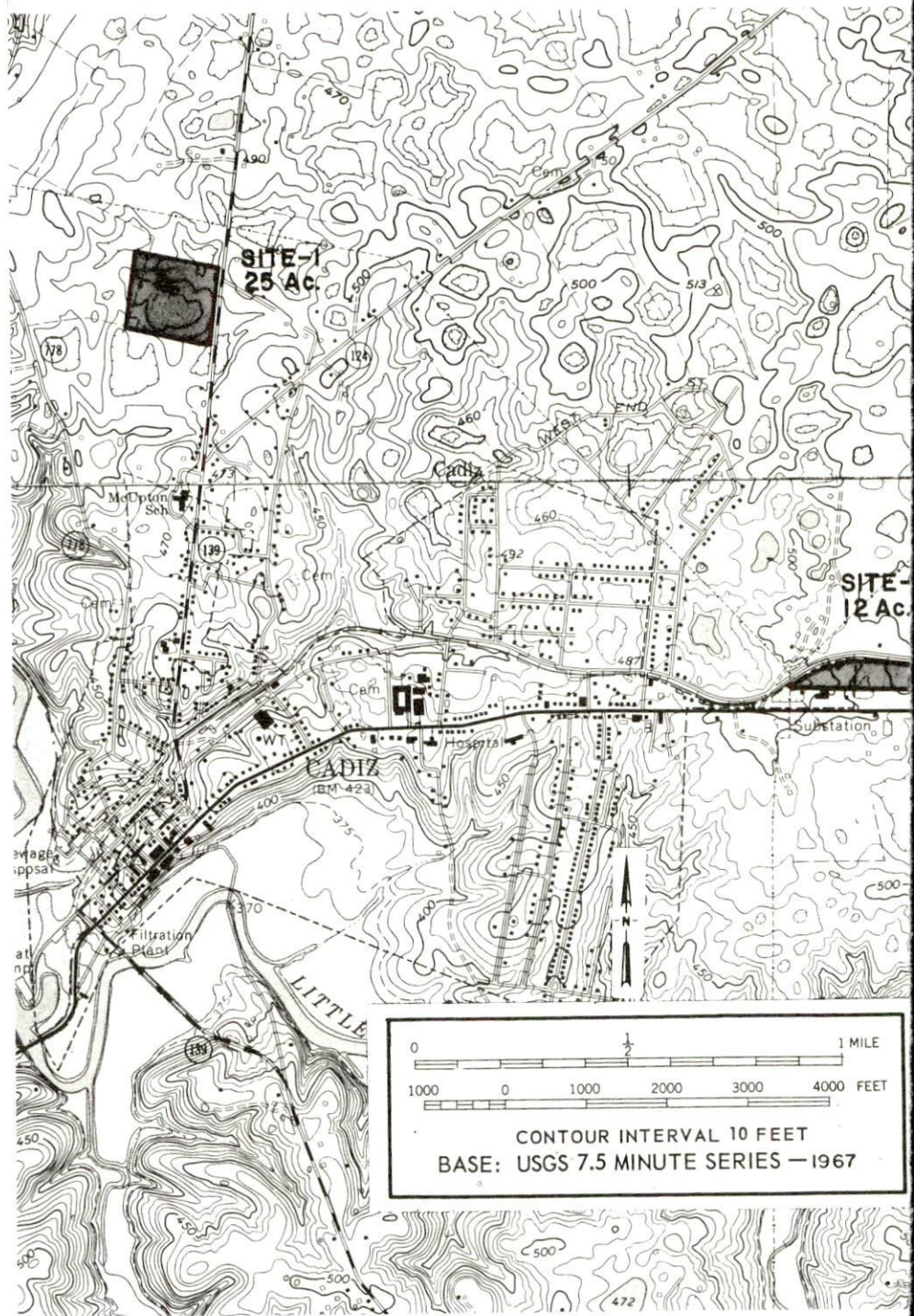
SITE #2: ACREAGE: 30 acres
LOCATION: 1 mile east of Cadiz
ZONING: None
HIGHWAY ACCESS: One-fourth mile from U. S. 68 via paved access road
RAILROADS: Not rail served
WATER: Cadiz Water Department
SIZE LINE: 8-inch line one-fourth mile from site
GAS: Western Kentucky Gas Company
SIZE MAIN: 4-inch main one-fourth mile from site
ELECTRICITY: Pennyrile RECC
SEWERAGE: Package plant necessary
OWNERSHIP: Private

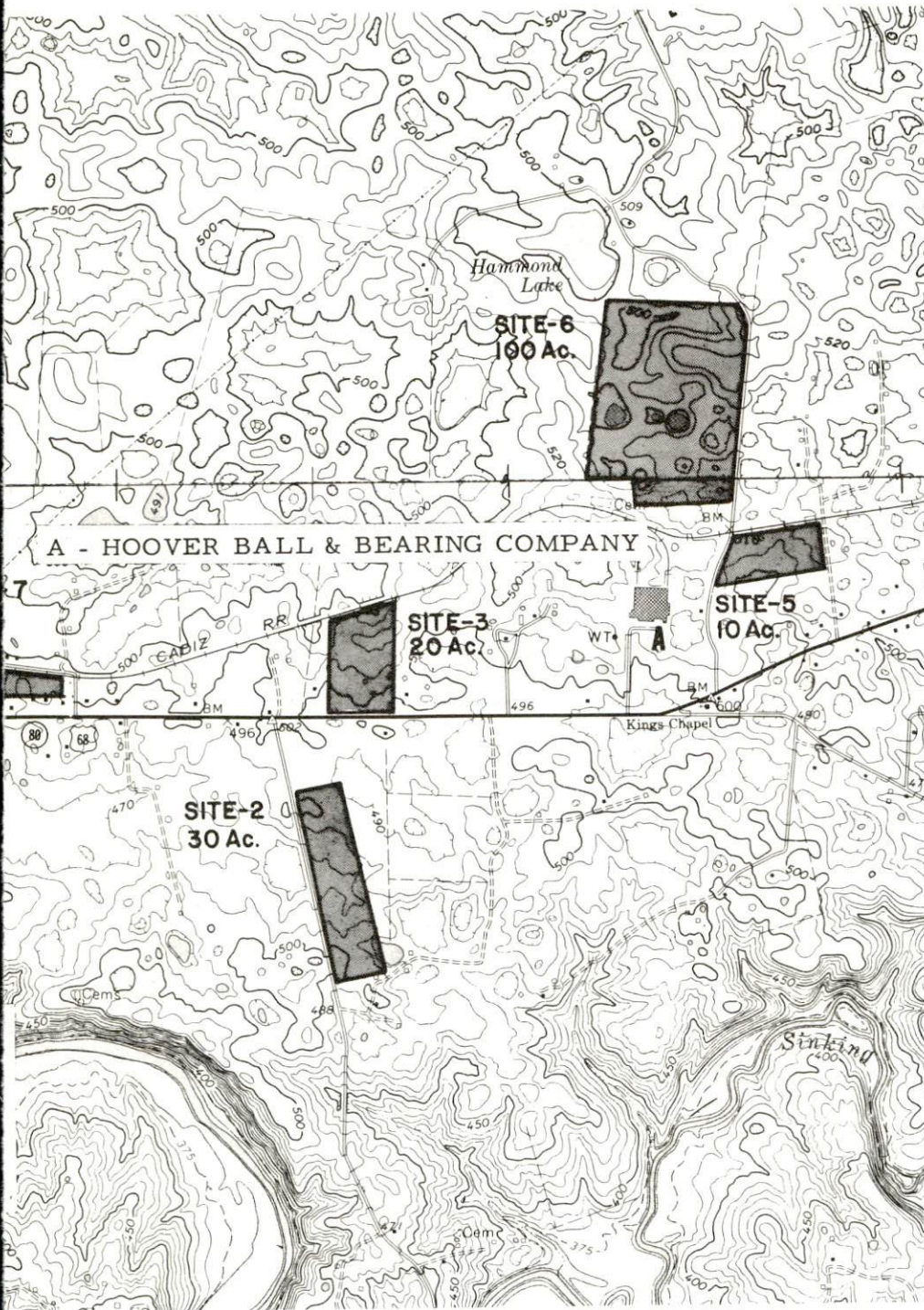
SITE #3: ACREAGE: 20 acres
LOCATION: 1 mile east of Cadiz
ZONING: None
HIGHWAY ACCESS: Fronts on U. S. 68 and Kentucky 80
RAILROADS: Cadiz Railroad along northern boundary of site
WATER: Cadiz Water Department
SIZE LINE: 8-inch line on site
GAS: Western Kentucky Gas Company
SIZE MAIN: 4-inch IP main on site
ELECTRICITY: Pennyrile RECC
SEWERAGE: Package plant necessary
OWNERSHIP: Private

SITE #5: ACREAGE: 10 acres
LOCATION: 1 1/2 miles east of Cadiz
ZONING: None
HIGHWAY ACCESS: Unimproved access road from U. S. 68
RAILROADS: Cadiz Railroad along northern boundary of site
WATER: Cadiz Water Department
SIZE LINE: 8-inch line 1,000 feet from site; 200,000 gallon water tower 1,500 feet from site
GAS: Western Kentucky Gas Company
SIZE MAIN: 4-inch IP main 1,000 feet from site
ELECTRICITY: Pennyrile RECC
SEWERAGE: Package plant necessary
OWNERSHIP: Private

SITE #6: ACREAGE: 100+ acres
LOCATION: 1 1/2 miles east of Cadiz
ZONING: None
HIGHWAY ACCESS: Unimproved access road from U. S. 68
RAILROADS: Cadiz Railroad 200 feet from south side of site
WATER: Cadiz Water Department
SIZE LINE: 8-inch line 2,300 feet from site; 200,000 gallon water tower 1,700 feet from site
GAS: Western Kentucky Gas Company
SIZE MAIN: 4-inch IP main 1,500 feet from site
ELECTRICITY: Pennyrile RECC
SEWERAGE: Package plant necessary
OWNERSHIP: Private

SITE #7: ACREAGE: 12 acres
LOCATION: Part of site inside east city limits
ZONING: None
HIGHWAY ACCESS: Unimproved road from U.S. 68
RAILROADS: Cadiz Railroad borders on north side of site
WATER: Cadiz Water Department
SIZE LINE: 10-inch line on site; 325,000 gallon water tower on site
GAS: Western Kentucky Gas Company
SIZE MAIN: 4-inch IP main on site
ELECTRICITY: Pennyrile RECC
SEWERAGE: Cadiz Sewer Department
SIZE LINE: 8-inch line 300 feet from site
OWNERSHIP: Private





INDUSTRIAL RESOURCES

CADIZ, KENTUCKY

Prepared by

The Kentucky Department of Commerce

in cooperation with

The Cadiz-Trigg County Chamber of Commerce

and

The Trigg County Industrial Foundation

1972

TABLE OF CONTENTS

<u>Chapter</u>	<u>Page</u>
INDUSTRIAL SITES	i
CADIZ, KENTUCKY - A RESOURCE PROFILE	1
THE LABOR MARKET	4
Population Trends	4
General Employment Characteristics, 1970	4
Manufacturing Employment Trends by Industry.	4
Cadiz Manufacturing Firms, Their Products and Employment	5
Wage Rates for Selected Occupations	5
Labor Organizations	7
Current and Future Labor Supply	7
Total Personal Income	7
Per Capita Personal Income	7
EDUCATION	8
Public Schools	8
Vocational Schools	8
Colleges and Universities	9
TRANSPORTATION10
Rail10
Truck Service10
Air11
Bus11
Rental Services11
POWER AND FUEL12
Electricity12
Natural Gas12
Other Fuels12
WATER AND SEWERAGE13
Water13
Sewerage.15

<u>Chapter</u>	<u>Page</u>
LOCAL GOVERNMENT.	16
City	16
County	16
Assessed Value of Property, 1971	16
Local General Property Tax Rates Per \$100 of Assessed Valuation, 1971	16
Planning and Zoning	16
Safety	17
Police.	17
Fire	17
Sanitation	17
HEALTH	18
Hospitals	18
Nursing Homes	18
Public Health.	18
OTHER LOCAL FACILITIES	19
Communications	19
Library Services	19
Religious Institutions	19
Financial Institutions	21
Hotels and Motels	21
Clubs and Organizations	21
RECREATION	22
Local	22
Area.	22
AGRICULTURE - NATURAL RESOURCES - CLIMATE.	24
Agriculture	24
Natural Resources	24
Climate	24
HISTORY	25

GENERAL HIGHWAY MAP TRIGG COUNTY KENTUCKY

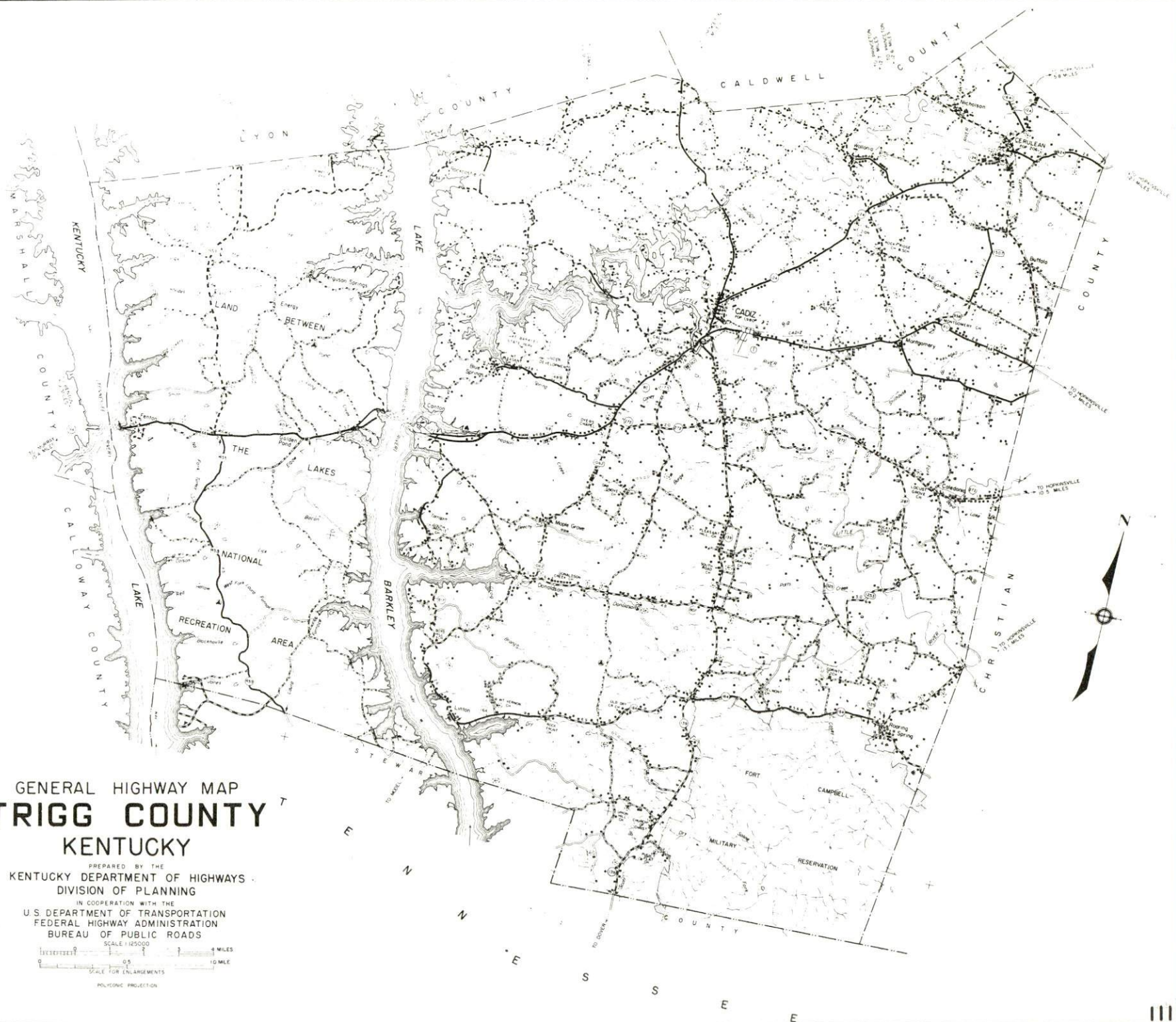
PREPARED BY THE
KENTUCKY DEPARTMENT OF HIGHWAYS
DIVISION OF PLANNING

IN COOPERATION WITH THE
U.S. DEPARTMENT OF TRANSPORTATION
FEDERAL HIGHWAY ADMINISTRATION
BUREAU OF PUBLIC ROADS

SCALE 1:25000
0 1 2 3 4 MILES
0 1 2 3 4 MILES
SCALE FOR ENLARGEMENTS

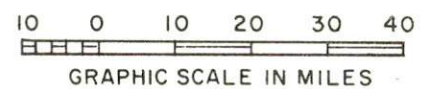
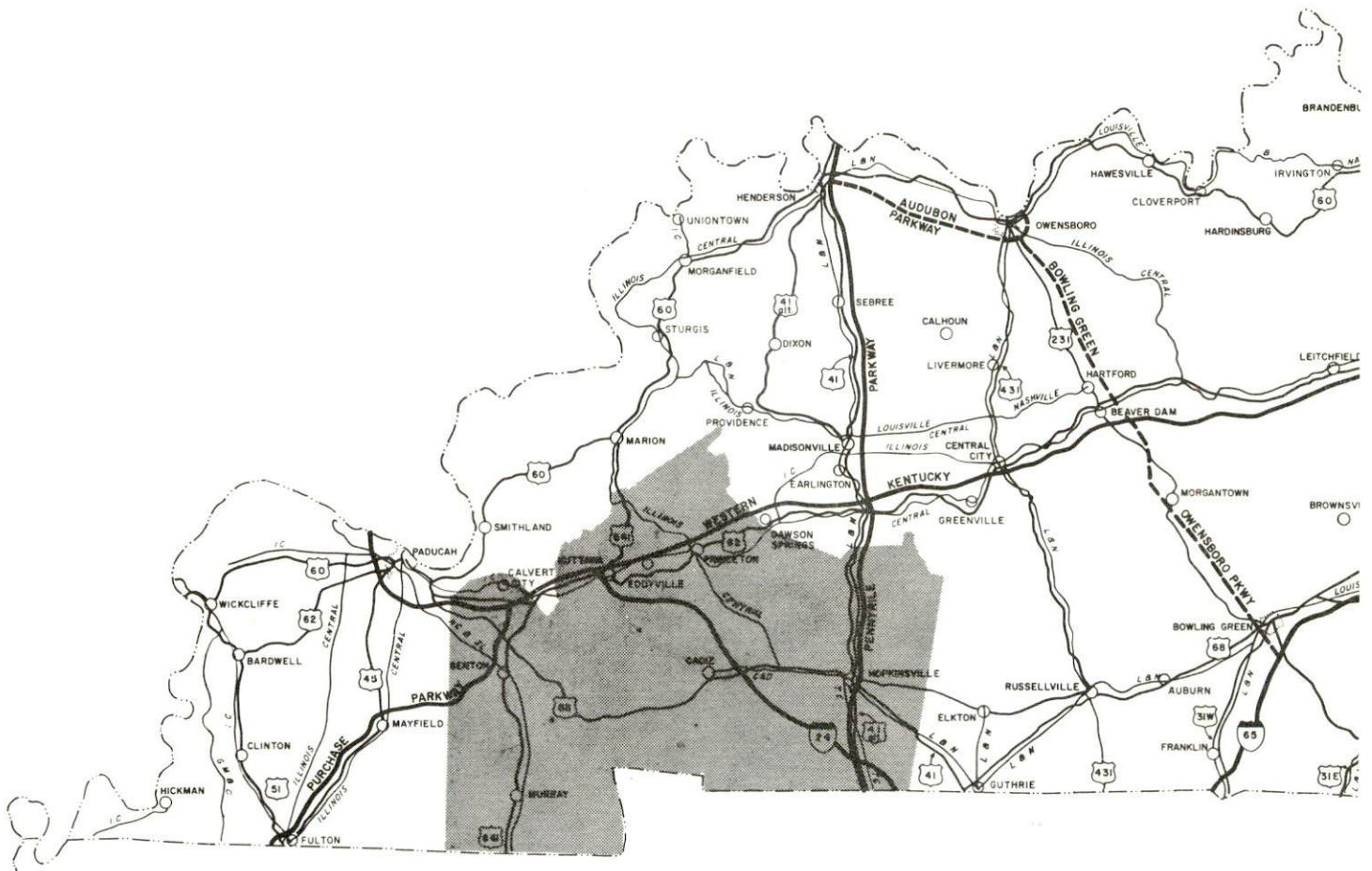
POLYCONIC PROJECTION

ORIGINAL DATA			
1956			
REVISIONS			
DATE	BY	DATE	BY
1-1-56	R.L.H.		



CADIZ LABOR MARKET AREA

*Shaded area denotes labor market area



CADIZ, KENTUCKY - A RESOURCE PROFILE

Location

Cadiz, "The Gateway to the Land Between the Lakes," is located in the Pennyryle Region of southwest Kentucky approximately 7 miles east of Lake Barkley. Cadiz, the county seat of Trigg County, is 187 miles southwest of Louisville, Kentucky, and 64 miles northwest of Nashville, Tennessee.

The 1970 population of Cadiz was 1,937 and the 1970 population of Trigg County was 8,620.

The Economic Framework

Total employment in Trigg County in 1970 averaged 2,600 with agriculture providing 700 jobs, manufacturing 400, trade and services 430 and government 400. Major industrial products are auto and truck seat springs and apparel.

Per capita income in the county in 1969 was \$2,260. Between 1959 and 1969, per capita personal income in the county increased approximately 140 percent.

The Cadiz labor market area includes Trigg County, the five surrounding Kentucky counties, and Stewart County, Tennessee. Employment in the Kentucky portion of the labor market area in 1970 totaled 47,500, with agriculture providing 4,900 jobs, manufacturing 10,540, trade and services 8,735, and government 10,600. In the Kentucky area, industrial employment has increased approximately 70 percent or 4,426 jobs since 1961 with sharpest gains in the machinery and metal products industries.

Despite important industrial gains in recent years the area still has a deficit of 1,764 manufacturing jobs when measured against the national industrial employment-population ratio. This indicates an area where the potential for additional manufacturing production is excellent.

Resources for Growth

1. There is a current estimated labor supply of 3,865 men and 3,810 women available for industrial jobs in the Kentucky portion of the labor market area. In addition, 5,935 young men and 5,705 young women in the Kentucky portion will become 18 years of age by 1978 and potentially available for work. Also, the current labor supply would be increased by the number of men and women in the adjoining Tennessee county who are available for industrial jobs.

2. The local transportation capability is good. Rail service is provided by the Cadiz Railroad which extends from Cadiz to Gracey, Kentucky, where it connects with the Illinois Central Railroad. Cadiz is 20 miles from Hopkinsville via U. S. 68, where an interchange for the north-south Pennyriple Parkway is located and 23 miles north along the Pennyriple Parkway is an interchange for the east-west Western Kentucky Parkway. In addition, Interstate 24 is under construction. When completed, an interchange will be located approximately 5 miles from Cadiz. Barge transportation is available on Lake Barkley via the Cumberland and Tennessee Rivers. Several local private airports near Cadiz are capable of accommodating light aircraft. Commercial air service is available at Paducah's Barkley Field, only 57 miles distant.

3. Pennyriple RECC provides electric power to Cadiz and Trigg County. Natural gas service is provided by Western Kentucky Gas Company whose source of supply is Texas Gas Transmission Corporation. The raw water supply is more than adequate for continued growth. Other fuels available in the area are propane, butane, fuel oils and coal.

4. Industrial sites - Cadiz has six sites available for industrial use.

5. Education is an important growth asset for Cadiz. One school system operates within the county and educational television is available.

One university and three community colleges are within 50 miles of Cadiz.

The Madisonville Area Vocational School is located in Madisonville, 50 miles distant, and offers training in 14 different courses. The Christian County Vocational Extension Center is located in Hopkinsville, only 20 miles distant, and offers training in six different courses.

Community Programs for Improvement

Recent community improvements include a new 60-bed personal care home. Projects under construction include: A new elementary school; a learning resource center with library, audio-visual center, planetarium, and theater; a vocational education building with Industrial Arts, Vocational Agriculture, Home Economics, Distributive Education and Business and Office Education courses; an athletic, recreation, playground park complex with facilities for classes in reforestation; a new Catholic Church. Planned projects include a new \$800,000 public library and community center.

Recreation, Entertainment and Livability

Lake Barkley State Resort Park, 7 miles distant, is a 3,000-acre resort park. The facilities include a lodge and cottages, and camping sites. Recreational activities include fishing, boating, swimming and golfing.

Land Between the Lakes National Recreation Area, 10 miles distant, is 170,000 acres of wooded ridge formed into a peninsula by Kentucky and Barkley Lakes for recreation, conservation, and education. Recreational activities include fishing, water sports, hunting and camping.

Lake Barkley, a 93,000-acre reservoir, has 1,004 miles of shoreline. Recreational activities include fishing, boating, camping, swimming, hunting and picnicking. Barkley Dam near Grand Rivers is 157 feet high and 10,180 feet long.

Kentucky Lake, with 2,380 miles of shoreline, is the longest of any man-made lake in the world. Activities include fine fishing and water sports, swimming, boating, and water skiing. Huge Kentucky Dam is TVA's largest and controls the waters of the Tennessee River near its junction with the Ohio River at Paducah. The dam is 206 feet high, 8,422 feet long, and cost \$115 million.

Jefferson Davis Monument State Shrine, 31 miles from Cadiz, is a 20-acre park with picnic shelter and playground area. It is the site of the farm on which the President of the Confederacy was born. A museum is housed in the monument, a 351-foot cast concrete obelisk, which is the tallest in the world. An elevator ride to the top of the monument affords a magnificent view of the country side.

Pennyrile Forest State Resort Park, 40 miles from Cadiz, is a 436-acre resort park with a 55-acre lake, lodge, cottages, and camping facilities. The park recreational facilities and activities include: native pine and hardwood forest, lodge pool, beach, bathhouse, boat rentals, fishing, golf, horseback riding, hiking, picnic shelter, playground, and supervised recreation.

Kentucky Dam Village State Resort Park, 36 miles distant, includes 1,200 acres and a Village Inn. The facilities include lodge, cottages, and camping facilities. The park includes a lodge, pool, 18-hole golf course, horseback riding, playground, tennis court, airstrip, and a lake for boating and fishing.

Kenlake State Resort Park, 22 miles distant, is an 1,800-acre resort park with hotel, cottages and camping facilities. The park facilities and activities include: fishing, boating, pool and lake swimming, horseback riding, golfing, tennis, and shuffleboard.

Little River Bay Park has facilities for swimming, picnicking, boating, and fishing.

THE LABOR MARKET

POPULATION TRENDS ^{1/}

Area	Population			Percent Change	
	1970	1960	1950	1960-70	1950-60
Cadiz	1,937	1,980	1,280	- 0.4	+54.7
Labor Market Area	131,658	122,479	105,548	+ 7.5	+16.0
Trigg County	8,620	8,870	9,683	- 2.8	- 8.4
Caldwell County	13,179	13,073	13,119	+ 0.8	- 1.0
Calloway County	27,692	20,972	20,147	+32.0	+ 4.1
Christian County	56,224	56,904	42,359	- 1.2	+34.3
Lyon County	5,562	5,924	6,853	- 6.1	-13.6
Marshall County	20,381	16,736	13,387	+21.8	+25.0

GENERAL EMPLOYMENT CHARACTERISTICS, 1970 ^{2/}

Major Employment Group	Employment	
	Trigg County	Labor Market Area
TOTAL	2,600	47,500
Agricultural	700	4,900
Nonagricultural	1,900	42,600
Manufacturing	400	10,537
Trade and Services	429	8,734
Government	400	10,600
Other	671	12,729

MANUFACTURING EMPLOYMENT TRENDS BY INDUSTRY

JUNE 1971 AND 1961 ^{3/}

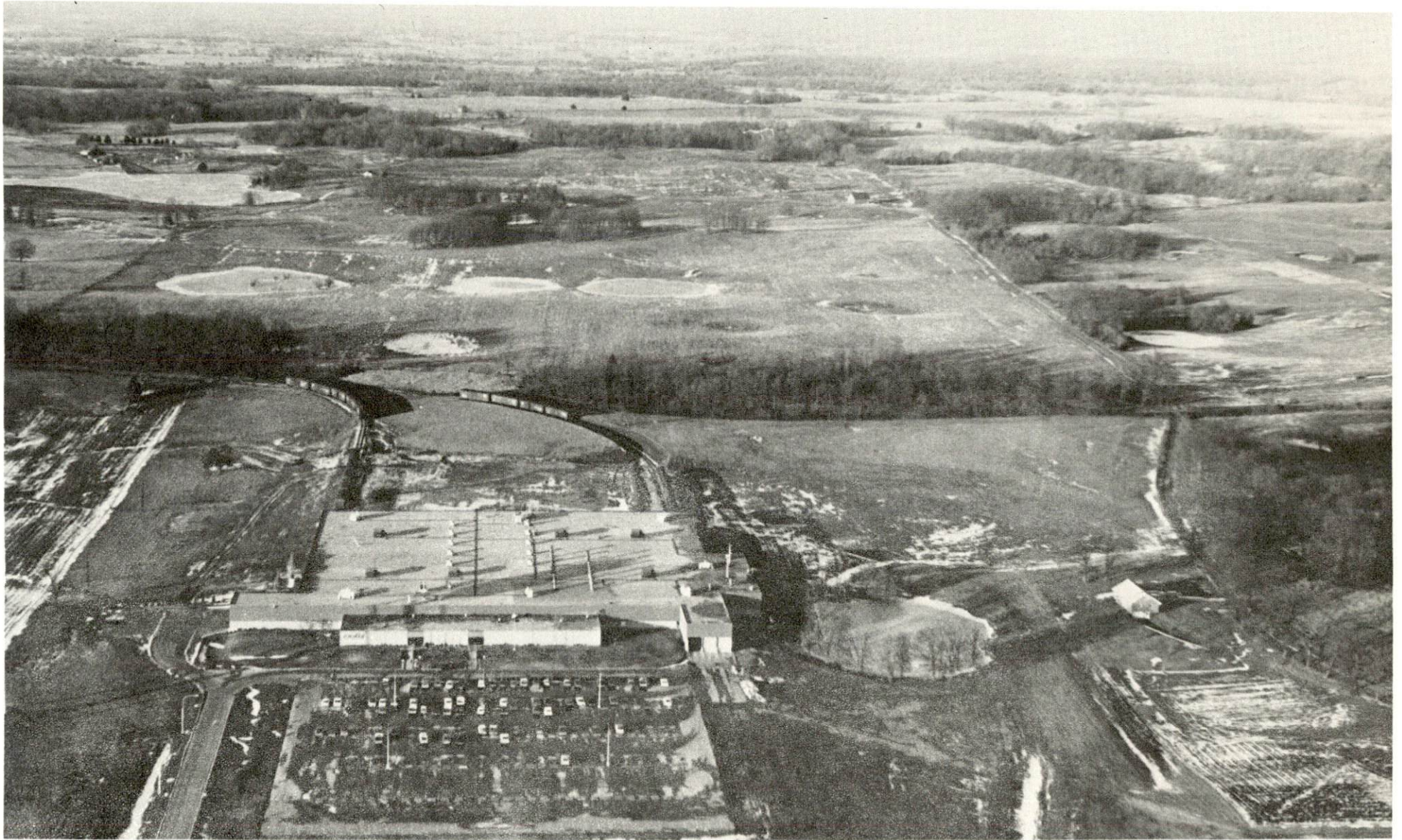
Industry	Trigg County			Labor Market Area		
	1971	1961	% Change	1971	1961	% Change
TOTAL	456	170	+168.2	10,744	6,318	+ 70.1
Food & kindred products	11	13	- 15.4	322	377	- 14.6
Tobacco	0	0	--	14	23	- 39.1
Apparel, textiles, leather	200	48	+316.7	1,840	1,830	+ 0.5
Lumber & furniture	12	105	- 88.6	955	371	+157.4
Printing, publishing, paper	2	4	- 50.0	128	101	+ 26.7
Chemicals, petroleum, coal, rubber	0	0	--	2,558	1,577	+ 62.2
Stone, clay & glass	0	0	--	121	121	--
Primary metals	0	0	--	1,170	505	+131.7
Machinery & metal products	231	0	--	3,400	1,413	+140.6
Other	0	0	--	236	0	--

CADIZ MANUFACTURING FIRMS,
THEIR PRODUCTS AND EMPLOYMENT ^{4/}

<u>Firm</u>	<u>Product</u>	<u>Employment</u>		
		<u>Total</u>	<u>Male</u>	<u>Female</u>
Bailey Lumber Co.	Sawmill and lumber	30	29	1
Cadiz Milling Co., Inc.	Feed	13	12	1
The Cadiz Record	Newspaper, job printing	2	2	0
Cadiz Spring Products Div., Hoover Ball & Bearing Co.	Automotive, truck seat springs	400		
J. G. Carr Sawmill	Rough lumber, cross- ties, cedar chest panels	2	2	0
Elk Brand Manufacturing Co.	Dungarees, insulated apparel	121	11	110
Futrell Sawmill	Lumber, railroad ties, barrel staves, hard- wood flooring	9	8	1
Karr-McGee Oil Co.	Fertilizer, chemicals	3	3	0
James C. Martin	Rough lumber	7	7	0
Noel Concrete & Excavating Co., Inc.	Ready mixed concrete, concrete block	20	19	1
Trigg-Knitt Hosiery Mill	Women's hosiery	51	18	33

WAGE RATES FOR SELECTED OCCUPATIONS
CADIZ, KENTUCKY ^{5/}

<u>Classification</u>	<u>Wages Per Hour</u>		
	<u>Starting</u>	<u>Maximum</u>	<u>Prevailing</u>
<u>Production Employees</u>			
Assembler	\$2.09	\$2.29	\$2.29
Inspector	1.60	2.89	2.89
Production Laborer	2.09	2.29	2.29
Welder, Arc or Acetylene (Class-A)	2.09	2.39	2.39
<u>Service Employees</u>			
Electrician (Class-A)	\$3.25	\$4.00	\$4.00
Laborer	2.12	2.75	2.50
Machinist	2.00	4.00	3.00
Mechanic, Maintenance	2.00	4.00	3.50
Truck Driver, Industrial (Class-A)	2.12	2.39	2.39
<u>Office Employees</u>			
Bookkeeper	\$2.38	\$3.51	\$2.50
Receptionist	2.38	3.51	2.50
Secretary	2.71	4.08	2.71
Typist	2.10	3.20	2.34



HOOVER BALL AND BEARING COMPANY

LABOR ORGANIZATIONS

Union

United Steelworkers

Representing Workers at:

Cadiz Spring Products Division,
Hoover Ball & Bearing Co.

CURRENT AND FUTURE LABOR SUPPLY - CADIZ LABOR MARKET AREA

<u>Area</u>	<u>Current Labor Supply, 1971 ^{6/}</u>			<u>Future Labor Supply by 1978 ^{7/}</u> <u>(Becoming 18 Years of Age)</u>		
	<u>Total</u>	<u>Male</u>	<u>Female</u>	<u>Total</u>	<u>Male</u>	<u>Female</u>
Labor Market						
Area	7,671	3,864	3,807	11,637	5,933	5,704
Trigg County	735	367	368	852	436	416
Caldwell County	950	518	432	1,181	594	587
Calloway County	1,594	763	831	1,938	969	969
Christian County	1,820	864	956	5,162	2,636	2,526
Lyon County	731	420	311	416	211	205
Marshall County	1,841	932	909	2,088	1,087	1,001

TOTAL PERSONAL INCOME ^{8/}

<u>Area</u>	<u>1969</u>	<u>1959</u>	<u>% Change</u>
Trigg County	\$ 20,492,000	\$ 8,013,000	+155.7
Labor Market Area	476,231,000	186,264,000	+155.7
Kentucky	9,202,000,000	4,655,000,000	+ 97.6

PER CAPITA PERSONAL INCOME ^{9/}

<u>Area</u>	<u>1969</u>	<u>1959</u>	<u>% Change</u>
Trigg County	\$2,260	\$ 941	+140.2
Labor Market Area	\$1,410 to 4,610	\$927 to 2,187	N. A.
Kentucky	2,847	1,552	+ 83.4

EDUCATION

Public Schools

	<u>Trigg County</u>
Total Enrollment	2,025
Elementary	1,050
High School	975
Student-Teacher Ratio	20-1
Elementary	23-1
High School	18-1
State Rating of High School	Standard
Other Accreditations	The Southern Association of Colleges and Schools
Percent High School Graduates to College	33.0
Current Expenditures Per Pupil	\$500.76
Bonded Indebtedness, June 30, 1971	\$1,989,000

Vocational Schools

	<u>Nearest Area School</u>	<u>Nearest Extension Center</u>
	Madisonville Area Vocational School	Christian County Extension Center
Location	Madisonville	Hopkinsville
Miles Distant	50	20
Curriculum	Certified Lab Assistant Health Career Medical Assistant Medical Secretary Practical Nursing Radiologic Technologist Surgical Technician Electronics (Industrial Auto Body Repair Auto Mechanics Carpentry Drafting Electricity Machine Shop	Appliance Repair Auto Mechanics Carpentry Drafting Electricity Welding

Colleges and Universities

<u>Name</u>	<u>Area - Within 50 Miles</u>		<u>Highest Degree Conferred</u>
	<u>Location</u>	<u>Enrollment</u>	
Murray State University	Murray	7,071	Masters
Madisonville Community College	Madisonville	359	Associate
Paducah Community College	Paducah	1,228	Associate
Hopkinsville Community College	Hopkinsville	540	Associate

TRANSPORTATION

Rail

Line serving Cadiz - Cadiz Railroad Company - Joins the Illinois Central Railroad at Gracey, Kentucky, 10 miles distant

Services - Siding, switching, freight, REA Express

RAILWAY TRANSIT TIME FROM GRACEY, KENTUCKY, TO: 10/

City	No. of Days		City	No. of Days	
	CL			CL	
Atlanta, Ga.	4		Los Angeles, Calif.	6	
Birmingham, Ala.	3		Louisville, Ky.	2	
Chicago, Ill.	3		Nashville, Tenn.	2	
Cincinnati, Ohio	4		New Orleans, La.	3	
Cleveland, Ohio	5		New York, N. Y.	5	
Detroit, Mich.	5		Pittsburgh, Pa.	4	
Knoxville, Tenn.	4		St. Louis, Mo.	3	

Truck Service

Company

Home Office

Harper Truck Service, Inc.	Paducah, Kentucky
A. Ligon Truck Line, Inc. (United Trucking)	Lebanon, Kentucky
McLean Trucking Company	Winston-Salem, North Carolina
United Parcel Service	Louisville, Kentucky
Renner's Express, Inc.	Indianapolis, Indiana

HIGHWAY MILES AND TRUCK TRANSIT TIME IN DAYS FROM CADIZ, KENTUCKY, TO SELECTED MARKET CENTERS

City	Highway Miles	Delivery Time 11/		City	Highway Miles	Delivery Time	
		LTL	TL			LTL	TL
Atlanta, Ga.	316	2-3	1	Los Angeles, Calif.	2,028	7-8	4-6
Birmingham, Ala.	257	2-3	1	Louisville, Ky.	187	1	1
Chicago, Ill.	390	2-3	1	Nashville, Tenn.	64	1	1
Cincinnati, Ohio	260	2	1	New Orleans, La.	594	3	2
Cleveland, Ohio	500	3	1-2	New York, N. Y.	1,000	3-4	2-3
Detroit, Mich.	525	3	1	Pittsburgh, Pa.	630	2-3	2
Knoxville, Tenn.	249	2	1	St. Louis, Mo.	240	2	1

AirLocal

	Broadbent (private)	Woodruff Airport (private)
Location:	8 miles east of Cadiz	3 miles east of Cadiz
Runways:	2 turf	1 paved
Length:	1,850 feet; 2,150 feet	3,500 feet
Traffic		
Control:	Wind sock	Wind sock
Lighting:		Runway, obstructions
Services:	80 octane in emergency, phone at Broadbent Seed Plant	100 octane in emergency, tie down, phone

Nearest Commercial

	Barkley Field
Location:	8 miles west of Paducah; 57 miles from Cadiz
Runways:	2 paved
Length:	4,000 feet; 6,500 feet
Traffic	
Control:	Wind tee, radio, guards
Lighting:	Beacon, boundary, obstruction, runway lights and runway end identification lights
Services:	80 and 100 octane, jet fuel, taxi, limousine, U-Drive-It, storage, major A & E repairs, Delta and Ozark Airlines

Bus

Western Kentucky Stages

Rental Services

Limited car and truck rentals

POWER AND FUEL

Electricity

Company serving Cadiz and Trigg County - Pennyrile RECC

Source of power - Tennessee Valley Authority

Total generating capacity - 19,400,000 KW

Industrial rates furnished by - Pennyrile RECC, Hopkinsville, Kentucky

Natural Gas

Company serving Cadiz - Western Kentucky Gas Company

Source of supply - Texas Gas Transmission Corporation

Size of transmission mains - 24 and 10 inches (supplier); 6 inches (distributor)

Distribution mains - 4 and 2 inches

Distribution pressure - 10 to 25 psi

Btu content - 1,000

Specific gravity - .60

Rates - For industrial gas rates contact Industrial Development Division,
Western Kentucky Gas Company, Owensboro, Kentucky 42301

Other Fuels

Propane Distributors

Speedway Butane Gas Company, Pargas, Inc., Fortner L.P. Gas Co.,

J. Petty Company, Southern States Cooperative

Distillate Fuel Oil Distributors

Gulf Oil Company, Union 76, Standard Oil Company, Texaco

Residual Fuel Oil

Arrangements must be made with the refinery.

WATER AND SEWERAGE

Water

Company serving Cadiz - Cadiz Water Department

Source - Spring

Treatment plant capacity - 662,000 gallons per day

Average daily consumption - 232,000 gallons

Peak daily consumption - 296,500 gallons

Type treatment - Chlorination, fluoridation, lime, alum, settling, filtration

Storage capacity - 770,000 gallons

Size mains - 4, 6, 8, and 10 inches

Average pressure - Ranges from 50 to 120 psi

Average temperature - 60° F.

MONTHLY WATER RATES FOR WHOLESALE AND INDUSTRIAL CONSUMERS

Minimum monthly water rates for the first 2,000 gallons
or less of water per month for water connections of all sizes

<u>Size of Connection</u>	<u>Minimum Rates</u>
3/4-inch or less	\$ 4.00
over 3/4-inch to 1-inch	8.00
over 1-inch to 1 1/4-inch	11.25
over 1 1/4-inch to 1 1/2-inch	14.75
over 1 1/2-inch to 2-inch	21.25
over 2-inch to 3-inch	41.50
over 3-inch to 4-inch	68.00

Water Rates, City

Minimum (2,000 gallons)	\$ 4.00*
Next 3,000 gallons, per 1,000 gallons	1.35
Next 5,000 gallons, per 1,000 gallons	1.10
Next 10,000 gallons, per 1,000 gallons	.80
Next 30,000 gallons, per 1,000 gallons	.70
Next 50,000 gallons, per 1,000 gallons	.55
Over 100,000 gallons, per 1,000 gallons	.45

*Minimum rate for 3/4-inch or less

Water Rates, Rural (Immediate area outside city limits)

Minimum (2,000 gallons)	\$4.75
Next 3,000 gallons, per 1,000 gallons	1.60
Next 5,000 gallons, per 1,000 gallons	1.35
Next 10,000 gallons, per 1,000 gallons	1.10
Next 30,000 gallons, per 1,000 gallons	.95
Next 50,000 gallons, per 1,000 gallons	.70
Over 100,000 gallons, per 1,000 gallons	.45

Name of water district - Barkley Lake Water District

Area served - Western and northern portion of Trigg County and southern portion of Caldwell County

Source of raw water - Lake Barkley

Capacity of treatment plant - 1,000,000 gpd

Type treatment - Sand filter, chlorination, fluoridation, lime, alum, activated charcoal

Average amount of water used in a 24-hour period - 320,000 gallons

Peak amount of water used in a 24-hour period - 423,000 gallons

Water district storage capacity - 750,000 gallons

Average pressure - 50 to 60 psi

Average temperature - 60° F.

Size mains - 3, 4, 6, 8, and 10 inches

Rates -

Minimum charges per month for 5/8-inch service \$4.00

First 2,000 gallons, per 1,000 gallons	2.00
Next 3,000 gallons, per 1,000 gallons	1.20
Next 5,000 gallons, per 1,000 gallons	1.00
Next 10,000 gallons, per 1,000 gallons	.80
Next 30,000 gallons, per 1,000 gallons	.70
Next 50,000 gallons, per 1,000 gallons	.50
Over 100,000 gallons, per 1,000 gallons	.35

Meter Size

Minimum Rates

5/8-inch	\$ 4.00
3/4-inch	4.00
1-inch	7.60
1 1/2-inch	12.60
2-inch	20.60
3-inch	40.00
4-inch	65.00

Industrial rates may be negotiated.

Surface water sources - Lake Barkley and Little River
Average discharge - Little River near Cadiz 327 cfs (30-year record,
USGS)
Expected ground water yield - 5 to 200 gpm throughout county

Sewerage

Company serving Cadiz - Cadiz Sewer Department
Design capacity - 300,000 gpd
Average daily flow - 90,000 gallons
Treatment - Primary and secondary
Type treatment - Aeration, digester, drying beds
Treated effluent discharged into - Little River
Size of sanitary mains - 8 and 10 inches

MONTHLY SEWER RATES BASED ON WATER USAGE

Minimum (2,000 gallons)	\$3.15
Next 3,000 gallons, per 1,000	1.10
Next 5,000 gallons, per 1,000	.90
Next 10,000 gallons, per 1,000	.70
Next 30,000 gallons, per 1,000	.65
Next 50,000 gallons, per 1,000	.55
Over 100,000 gallons, per 1,000	.50

LOCAL GOVERNMENT

City

Structure - Mayor - 4-year term; 6 councilmen - 2-year terms
Budget 1971 - General Fund \$108,320; Water and Sewer Fund \$143,632
Fees and licenses - Business license based on gross receipts with
minimum fees ranging from \$15 to \$300 per year; unloading license
\$25 per year; annual auto tax \$5 per car, and \$7.50 per truck

County

Structure - County Judge - 4-year term; 7 magistrates - 4-year terms
Budget 1971-72 - General Fund \$89,364; Road Fund \$34,088

Assessed Value of Property, 1971

<u>Classes of Property*</u>	<u>Cadiz</u>	<u>Trigg County</u>
Real Estate	\$7,710,940	\$49,872,790
Tangibles	2,608,750	13,577,408
Public Service		5,084,003 (1970)

Local General Property Tax Rates Per \$100 of Assessed Valuation, 1971 ^{12/}

<u>Taxing Unit**</u>	<u>Cadiz</u>	<u>Trigg County</u>
State	\$.015	\$.015
County	.097	.097
School	.445	.445
City	.260	
Total	\$.817	\$.557

Planning and Zoning

Agency - Cadiz-Trigg County Planning Commission
Plans completed - Fringe Area Study, Capital Improvements Budget,
Housing Element

*Property assessed at 100 percent of fair value.

**Manufacturing machinery, raw materials inventories and goods in process
inventories are not subject to local tax. State rate is only \$.15 per \$100.

Safety

Police

Total staff
Radio-patrol cars

Cadiz

4
1

Trigg County

3
2

Fire

American Insurance
Association Fire Rating
Volunteers
Equipment:
750 gpm pumpers
650 gpm pumper
275 gpm pumper
tank trucks- 1,000 gal.

7
18

44

1
1
1
2

Sanitation

Cadiz

Type service

Municipal

Cost:

residential

\$1.50 for single or \$2.50 for dual
residence per month

business

\$5.00 to \$12.50 per month depending
upon amount and frequency

Collection frequency:

residential

Contracted

business

Weekly

Trash pickup

As needed

Disposal method

Sanitary land fill

HEALTH

Hospitals

<u>General Hospital</u>	<u>Location</u>	<u>Beds</u>
Trigg County Hospital	Cadiz	40

General hospital facilities and services - Laboratory, emergency room, nursery, obstetrics, gynecology, X-ray, EKG, cardiac care unit, part of Western Kentucky Hospital Service, Inc.*

Medical staff - 5 doctors, 7 registered nurses, 6 licensed practical nurses

Nursing Homes

	<u>Number</u>	<u>Beds</u>
Extended care homes	1	42
Personal care homes	1	68

Public Health

Facility - Trigg County Health Department

Staff - One sanitarian-administrative assistant, one registered nurse, one clerk, one sanitary inspector

Budget 1971-72 - \$43,593

*Participants in: Mid-South Regional Medical Program, Pennyroyal Mental Retardation Program, Comprehensive Health Planning, Red Cross Whole Blood Program

OTHER LOCAL FACILITIES

Communications

Telephone - South Central Bell Telephone Company
Services - Standard

Telegraph - Western Union
Services - Telephone

Postal - U. S. Post Office
Class - Second
Mail received - 4 times daily
Mail dispatched - 3 times daily

Newspapers - The Cadiz Record and Trigg County Times
Weekly and circulation - 2,350 2,000
Other papers received from - Hopkinsville and Louisville, Kentucky

Radio - WKDZ AM-FM
Stations received from - Hopkinsville, Louisville, Paducah and
Princeton, Kentucky; Nashville, Tennessee

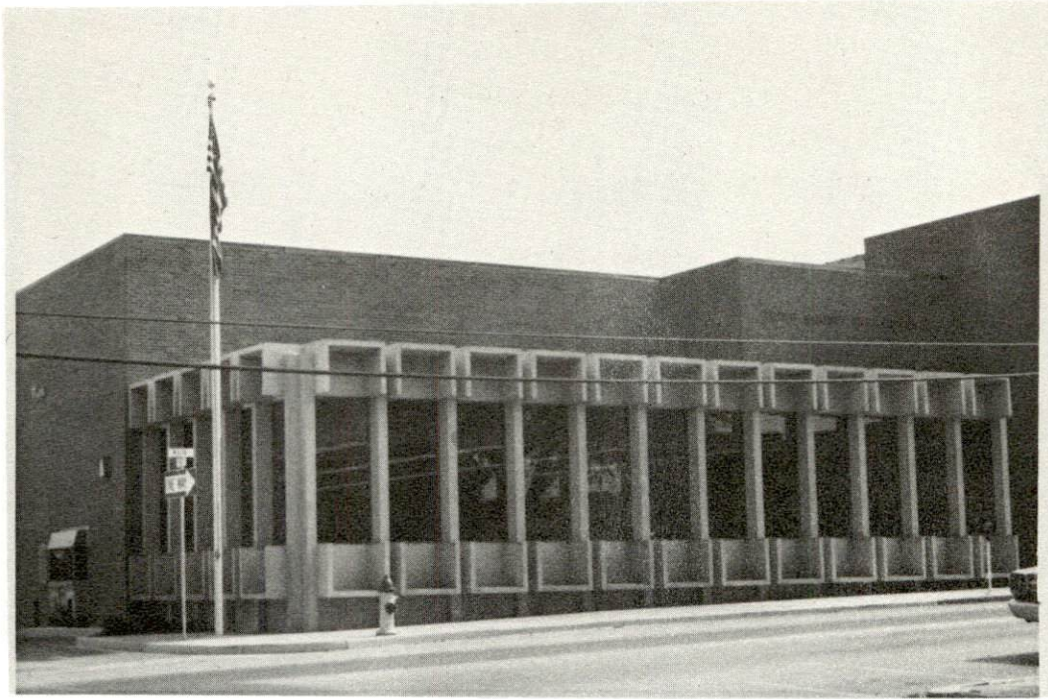
Television -
Reception from - Paducah and Bowling Green, Kentucky; Cape Girardeau,
Missouri; Nashville, Tennessee
Kentucky Educational Television - Madisonville transmitter, Channel 35;
Murray transmitter, Channel 21

Library Services

Public Library - Trigg County Library
Size collection - 8,000 volumes
Circulation, 1971 - 9,600
Services - Magazines, newspapers, information file material, film
strips, records, art, audio-visual equipment, sports equipment

Religious Institutions

Number of churches - 11
Denominations - Baptist, Catholic, Christian, Church of Christ, Church
of God, Methodist, Presbyterian



TRIGG COUNTY FARMERS BANK
MAIN OFFICE



TRIGG COUNTY FARMERS BANK
EAST CADIZ BRANCH

Financial Institutions

<u>Bank</u>	<u>Statement as of December 31, 1971</u>	
	<u>Assets</u>	<u>Deposits</u>
Trigg County Farmers Bank	\$17,851,441	\$16,355,507
Bank of Cadiz	2,231,279	1,771,808

Hotels and Motels

Total number - 4
Units - 52

Clubs and Organizations

Business and Civic - Chamber of Commerce, Lions Club, Civitan Club,
Junior Chamber of Commerce, Rotary, Optimist

Fraternal - Masons, American Legion, Eastern Star

Women's - DAR, Garden Club, Hospital Auxiliary, Homemakers, Woman's
Club, Business and Professional Women's Club, Jaycettes, Iota Tau

Youth - Boy Scouts, Cub Scouts, Girl Scouts, Brownies, Little League,
4-H, FFA, Explorers, Teen Club

Other - Sportsmans Club, two riding clubs, Fox Hunters Association,
C-B Radio Club, Bass Club

RECREATION

Local

Public Recreation Facilities

Supervised program - Summer Recreation Program

Park - 1

Playground - 1

Golf course - 1 (Lake Barkley State Resort Park open to public)

Tennis courts - 2

Softball diamond - 1

Football diamond - 1

Other - Basketball court, 18 Army Corp of Engineers Recreation Area (includes launching ramp, picnic area, camping facility)

Cultural Events

Community Chorus, Summer Open Air Theater, Community Concert Series at Hopkinsville Community College

Area (Within 50 miles)

Lake Barkley State Resort Park

Land Between the Lakes

Lake Barkley and Barkley Dam

Kentucky Lake and Kentucky Dam

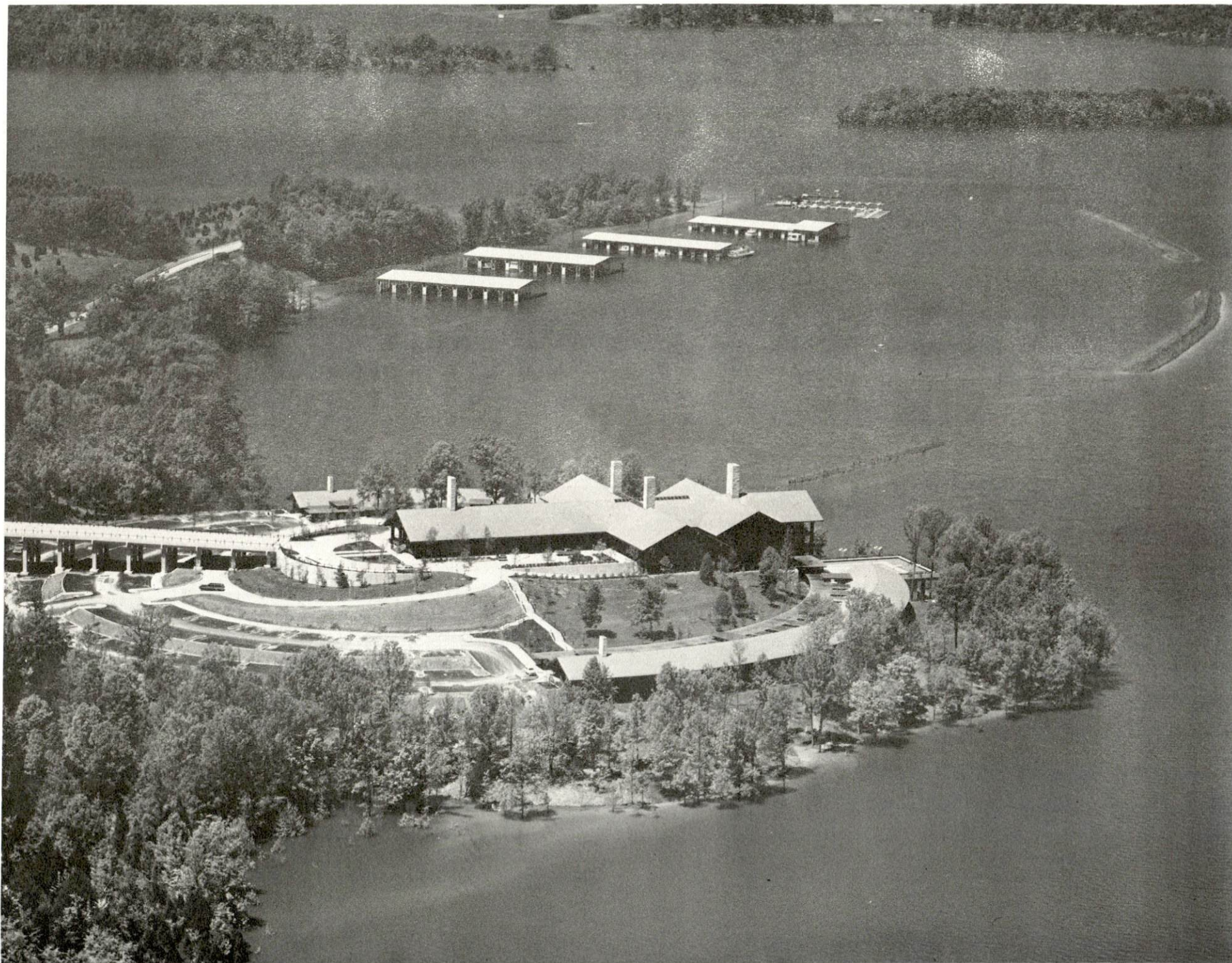
Jefferson Davis Monument State Shrine

Pennyrile Forest State Resort Park

Kentucky Dam Village State Resort Park

Kenlake State Resort Park

Little River Bay Park



LAKE BARKLEY STATE RESORT PARK

AGRICULTURE - NATURAL RESOURCES - CLIMATE

Agriculture 13/

	<u>Trigg County</u>	<u>Labor Market Area</u>
Total land area (acres)	293,760	1,587,840
Percent of area in farm land	49.1	61.3
Number of farms	654	6,435
Average size of farms (acres)	220.7	151.2
1964 value of all farm products	\$4,418,937	\$33,150,417
Value per farm	6,757	5,152
Total crop sales	2,169,953	15,847,148
Total livestock & livestock products	2,248,689	17,292,106
1969 agricultural production included:		
Burley tobacco (lbs.)	1,394,000	8,293,000
Corn (bu.)	878,000	7,597,000
Cattle and calves (number)	24,700	164,300
Hogs and pigs (number)	27,500	133,700
Milk production, 1968 (lbs.)	3,510,000	63,040,000

Natural Resources

Principal mineral resources	Limestone
Other mineral resources	Clay, small deposits of vein minerals
Acres of commercial forest land	148,300
Most abundant tree species	Red oak, white oak, hickory, sweet gum, cottonwood, soft maple, ash

Climate 14/

	<u>Trigg County</u>
Temperature	
Annual mean (30-year record)	60.0 degrees
Average annual 1970	58.8 degrees
Record highest, July, 1966 (5-year record)	103.0 degrees
Record lowest, January, 1966 (5-year record)	- 6.0 degrees
Seasonal heating-degree days (30-year record)	3,758
Precipitation	
Mean annual total (30-year record)	45.14 inches
Mean annual snow and sleet (29-year record)	11.60 inches
Total precipitation 1970	46.93 inches
Mean number days precipitation, (.01 inch or more)	
(29-year record)	118
Average number days thunderstorms (29-year record)	55
Prevailing winds (22-year record)	South

HISTORY

Trigg County, the sixty-sixth county formed in the state, dates from 1820. Its territory was taken from Caldwell and Christian Counties and contains 457 square miles. It lies east of the Tennessee River and borders on the Tennessee state line. The Cumberland River flows in a northerly direction across it. Little River flows partly across Trigg County to its confluence with the Cumberland. The Cumberland and Little Rivers divide the county into three parts almost equal in size. The surface between the Tennessee and Cumberland Rivers is broken and hilly, while the eastern portion of the county is generally level to gently rolling. Its soil is based on limestone, with a red clay foundation. Nearly one-half of the county is forested.

Dr. Thomas Walker and Daniel Smith surveyed the boundary line between Virginia and North Carolina in the 1780's which included the Kentucky-Tennessee line of today as far west as the Tennessee River. In 1783 Robert Goodwin and his sons, Samuel and Jesse, of North Carolina, settled near Cerulean Springs in the northern corner of Trigg County. Soon Joel Wilson, Adam Thompson, Seth Pool, James David, and Samuel Campbell joined them. By 1800 other settlements had been established on Donaldson Creek at Roaring Springs. Boyd's Landing, later known as Canton, founded by Abraham Boyd, became the best known shipping point on the Cumberland River. Enough settlers migrated into the area to form a separate governmental division by 1820.

Trigg County was named for Colonel Stephen Trigg, a native of Virginia who came to Kentucky as a member of the Court of Land Commissioners, and after the surveys were completed he settled on Cane Run Creek in Mercer County. He lost his life on August 19, 1782, in the Battle of Blue Licks.

Trigg County had a population of 10,129 by 1850 and 14,073 by 1900. Trigg County's population fluxuated until 1950 when it started a steady decline to a population of 8,620 in 1970. Cadiz, the county seat, which was incorporated on December 6, 1822, is 468 feet above sealevel and had a population of 706 in 1860 and a population of 881 by 1900. In 1950, the population had increased to 1,280 and a further increase to 1,980 was noted by 1960. However, the 1970 population had declined slightly to 1,937. Cadiz and Trigg County have both met with a fluxation in population. The loss of population may be attributed to improvements in which Trigg County land was taken by the Fort Campbell Military Reservation, Kentucky Lake, Barkley Lake and the Land Between the Lakes National Recreation Area.

Trigg County lies in the center of a large dark-leaf tobacco-growing area with about one-half of the county covered in hardwood timber. It is also noted for the number and quality of old hams shipped each year. Lead and iron ore were mined in the 1840's and 1850's while presently limestone and some fluorspar is mined.

There are eleven manufacturing firms in Cadiz, the largest being Cadiz Spring Products Division of Hoover Ball and Bearing Company which makes automotive and truck seat springs.