

1972

Industrial Resources: Wayne County - Monticello

Kentucky Library Research Collections
Western Kentucky University, spcol@wku.edu

Follow this and additional works at: https://digitalcommons.wku.edu/wayne_cty

 Part of the [Business Administration, Management, and Operations Commons](#), [Growth and Development Commons](#), and the [Infrastructure Commons](#)

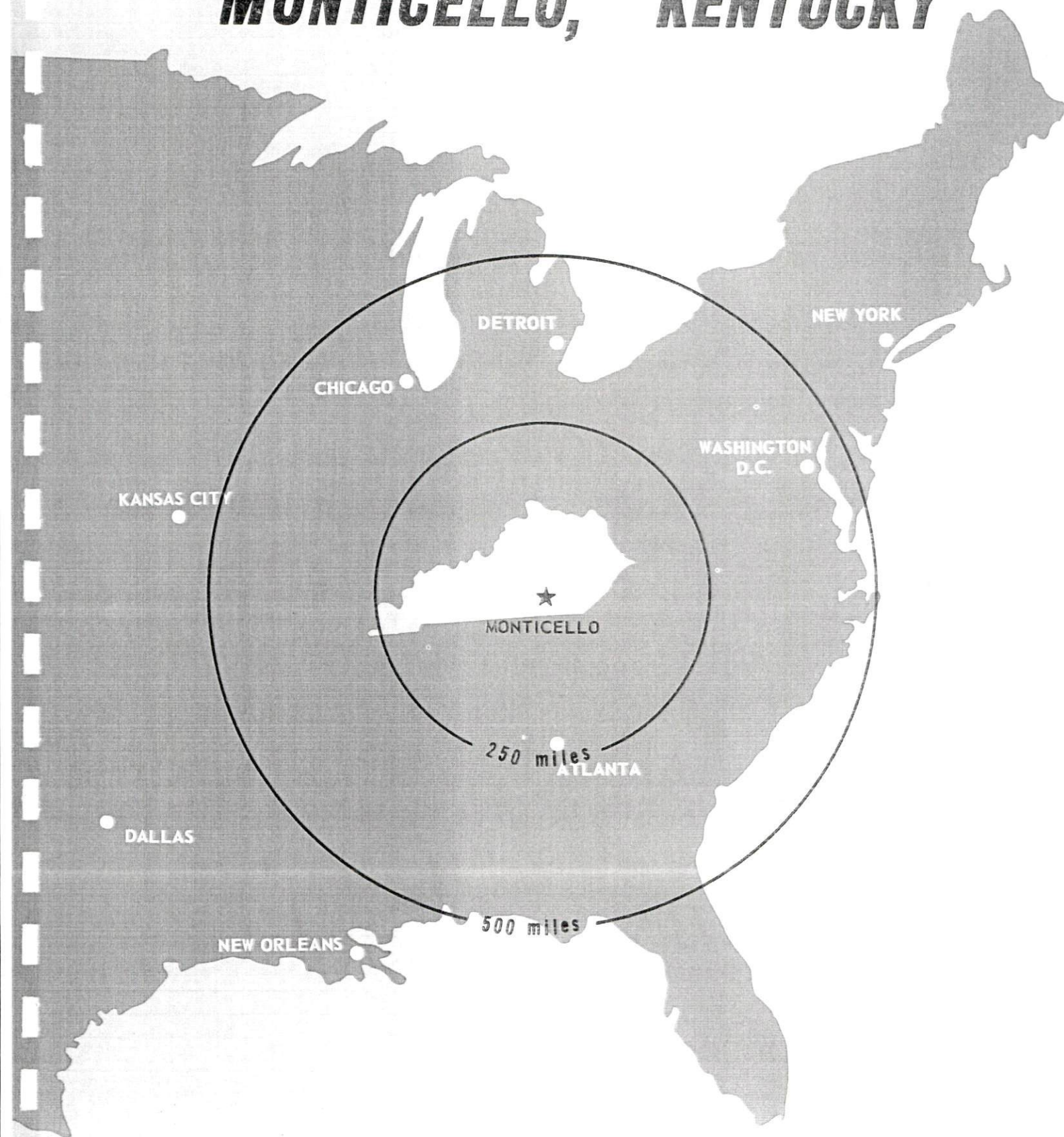
Recommended Citation

Kentucky Library Research Collections, "Industrial Resources: Wayne County - Monticello" (1972). *Wayne County*. Paper 13.
https://digitalcommons.wku.edu/wayne_cty/13

This Report is brought to you for free and open access by TopSCHOLAR®. It has been accepted for inclusion in Wayne County by an authorized administrator of TopSCHOLAR®. For more information, please contact topscholar@wku.edu.

INDUSTRIAL RESOURCES

MONTICELLO, KENTUCKY



CURRENT INDUSTRIAL RESOURCES

CURRENT INDUSTRIAL RESOURCES, MONTICELLO, KENTUCKY

This is a 1973 supplement to "Industrial Resources, Monticello, Kentucky" which was published in 1972.

Population

	<u>1970</u>	<u>1960</u>
Monticello	3,618	2,940
Wayne County	14,268	14,700
Labor Market Area	80,766	81,528
(Includes Wayne, Clinton, McCreary, Pulaski, and Russell Counties.)		

General Employment Characteristics

<u>Industry</u>	<u>Employment 1971</u>	
	<u>Wayne County</u>	<u>Labor Market Area</u>
TOTAL	3,680	25,570
Agricultural	1,150	5,290
Nonagricultural	2,530	20,280
Manufacturing	690	5,128
Government	520	4,120
Trade and Services	423	4,062
Other	897	6,970

Manufacturing Employment

<u>Type Industry</u>	<u>Wayne County</u>			<u>Labor Market Area</u>		
	<u>Sept. 1972</u>	<u>Sept. 1962</u>	<u>% Change</u>	<u>Sept. 1972</u>	<u>Sept. 1962</u>	<u>% Change</u>
TOTAL	1,082	755	43.3	6,321	2,780	127.4
Food & Kindred Products	22	46	-52.2	283	207	36.7
Apparel, Textiles, Leather	592	381	55.4	2,970	1,368	117.1
Lumber, Furniture	462	320	44.4	1,980	842	135.2
Printing & Publishing, Paper	3	0	0	67	26	157.7
Chemicals, Petroleum & Coal, Rubber	0	5	0	290	193	50.3
Stone, Clay & Glass	3	3	0	453	121	274.4
Machinery & Metal Products, Equipment	0	0	0	277	16	1,631.3
Other	0	0	0	1	7	- 85.7

There are presently 17 manufacturing firms in Monticello. Major firms, employment, and year started operations:

<u>Firms</u>	<u>Employment</u>	<u>Year started operations:</u>
Belden Corp.	300	NA
Christian Wood Products, Inc.	50	1929
Gamble Bros.	161	1969
Larand Leisureslies, Inc.	271	1969
Monticello Flooring and Lumber Co.	54	1971
Monticello Mfg. Co., Inc.	240	1955

Labor Supply

	<u>Wayne County</u>			<u>Labor Market Area</u>		
	<u>Total</u>	<u>Male</u>	<u>Female</u>	<u>Total</u>	<u>Male</u>	<u>Female</u>
Current (1972)	3,134	1,635	1,499	17,890	9,695	8,195
Potential additions next five years	1,577	810	767	8,536	4,421	4,115

Personal Income

Wayne County, 1970: Per Capita - \$1,363*
1960: Per Capita - \$ 679

*Unadjusted for commuting.

Power and Fuel

Electric Distributors

Monticello Electric Plant Board
South Kentucky RECC

Source of Supply

TVA
East Kentucky Power Cooperative

Natural Gas

Natural gas service is not available in Monticello.

Water and Sewerage

Water: Daily treatment capacity - 1,000,000 gallons; average daily use - 400,000 gallons; peak daily use - 500,000 gallons; storage capacity - 300,000 gallons; size distribution lines 10, 8 and 6 inches

Rates:

Commercial (inside city limits)

First	700 gals. per month	\$3.25 (minimum bill)
	701 to 1,500 gals. per month	4.00 (minimum bill)
	1,501 to 2,500 gals. per month	4.75 (minimum bill)
Next	7,500 gals. per month	1.00 per M gals.
Next	20,000 gals. per month	.55 per M gals.
Over	30,000 gals. per month	.45 per M gals.

Outside city limits (all customers)

First	2,500 gals. per month	\$5.50 (minimum bill)
Next	2,000 gals. per month	1.10 per M gals.
Next	2,000 gals. per month	.95 per M gals.
Over	65,000 gals. per month	.60 per M gals.

Sewerage: Treatment - Primary and secondary; design capacity - 336,000 gallons per day; size of sewer mains - 8 and 10 inches

Rates: 50 percent of monthly water bill; maximum \$5 residential, \$50 commercial

Local Government

Business Fees and Licenses: Annual business licenses range from \$3 to \$600

Property Tax Rates

Property tax rates per \$100 of assessed valuation, 1972.

	<u>Monticello</u>	<u>Wayne County</u>
State	\$.015	\$.015
County	.364	.364
School	.649	.343
City	.228	
Total	\$1.256	\$.722

Industrial Sites

The 40-acre industrial site shown on the 1972 Monticello site map remains available.

MONTICELLO INDUSTRIAL SITE

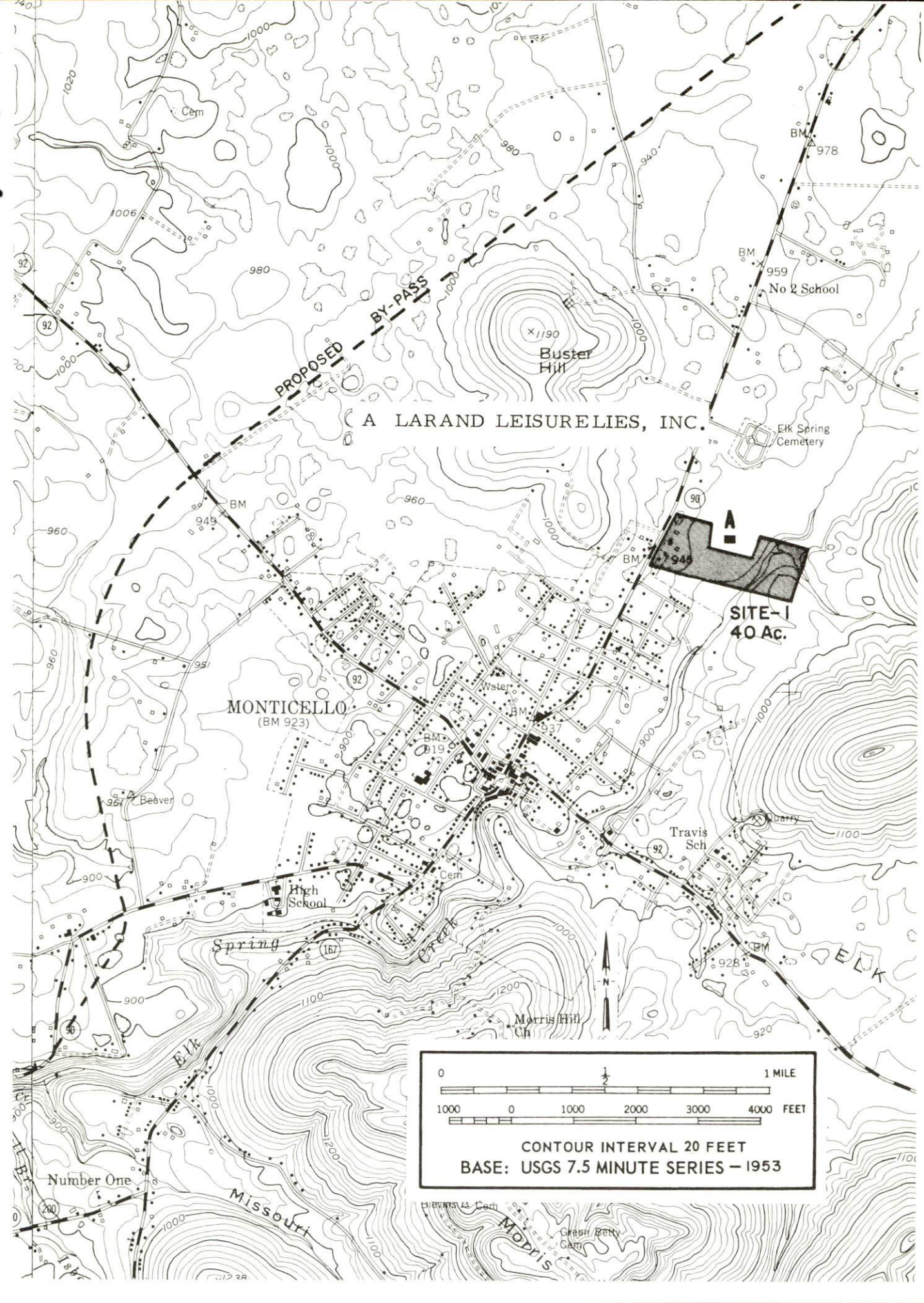
1972

MONTICELLO INDUSTRIAL SITE

1972

For more information about the following site, contact Mr. Carl Shearer, President, Wayne County Industrial Foundation, Inc., P. O. Box 486, Monticello, Kentucky; or the Kentucky Department of Commerce, Frankfort, Kentucky.

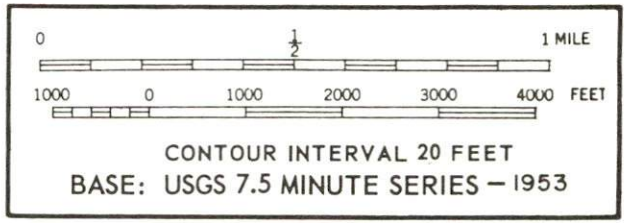
SITE #1: ACREAGE: 40 acres
LOCATION: Within northeast city limits
HIGHWAY ACCESS: Kentucky 90 forms the west
boundary of the site.
RAILROADS: Not rail served
WATER: Monticello Water and Sewer Commission
SIZE LINE: 10-inch line on site
GAS: Not available
ELECTRICITY: Monticello Electric Plant Board
SEWERAGE: Monticello Water and Sewer Commission
SIZE LINE: 8-inch line on site
OWNERSHIP: Wayne County Industrial Foundation, Inc.



(A LARAND LEISURELIES, INC.

MONTICELLO
(BM 923)

SITE-1
40 Ac.



Number One

Missouri

MORRIS
HILL

INDUSTRIAL RESOURCES
MONTICELLO, KENTUCKY

Prepared by
The Kentucky Department of Commerce
in cooperation with
Wayne County Chamber of Commerce

1972

This copy has been prepared by the Kentucky Department of Commerce,
Division of Research and Planning, and the cost of printing paid from
state funds.

TABLE OF CONTENTS

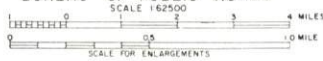
<u>Chapter</u>	<u>Page</u>
INDUSTRIAL SITES	i
MONTICELLO, KENTUCKY - A RESOURCE PROFILE	1
THE LABOR MARKET	5
Population Trends	5
General Employment Characteristics, 1970	5
Manufacturing Employment Trends by Industry	5
Monticello Manufacturing Firms, Their Products and Employment	7
Wage Rates for Selected Occupations.	8
Labor Organizations	8
Current and Future Labor Supply	9
Total Personal Income	9
Per Capita Personal Income	9
EDUCATION	11
Public Schools	11
Vocational Schools	11
Colleges and Universities.	12
TRANSPORTATION	13
Rail	13
Truck Service	13
Air.	14
Bus	14
Taxi	14
Rental Services	14
POWER AND FUEL	15
Electricity	15
Natural Gas.	15
Other Fuels.	15
WATER AND SEWERAGE.	16
Water	16
Sewerage	17

<u>Chapter</u>	<u>Page</u>
LOCAL GOVERNMENT	18
City	18
County	18
Assessed Value of Property	18
Local General Property Tax Rates Per \$100 of Assessed Valuation, 1971	18
Planning and Zoning	19
Safety	19
Police	19
Fire	19
Rescue Service	19
Sanitation	19
HEALTH	21
Hospitals	21
Nursing Homes	22
Public Health	22
Ambulance Service	22
OTHER LOCAL FACILITIES.	23
Communications	23
Library Services	23
Religious Institutions	23
Financial Institutions	25
Hotels and Motels.	25
Clubs and Organizations.	25
RECREATION	27
Local	27
Area	27
AGRICULTURE - NATURAL RESOURCES - CLIMATE	29
Agriculture	29
Natural Resources	29
Climate	29
HISTORY	30

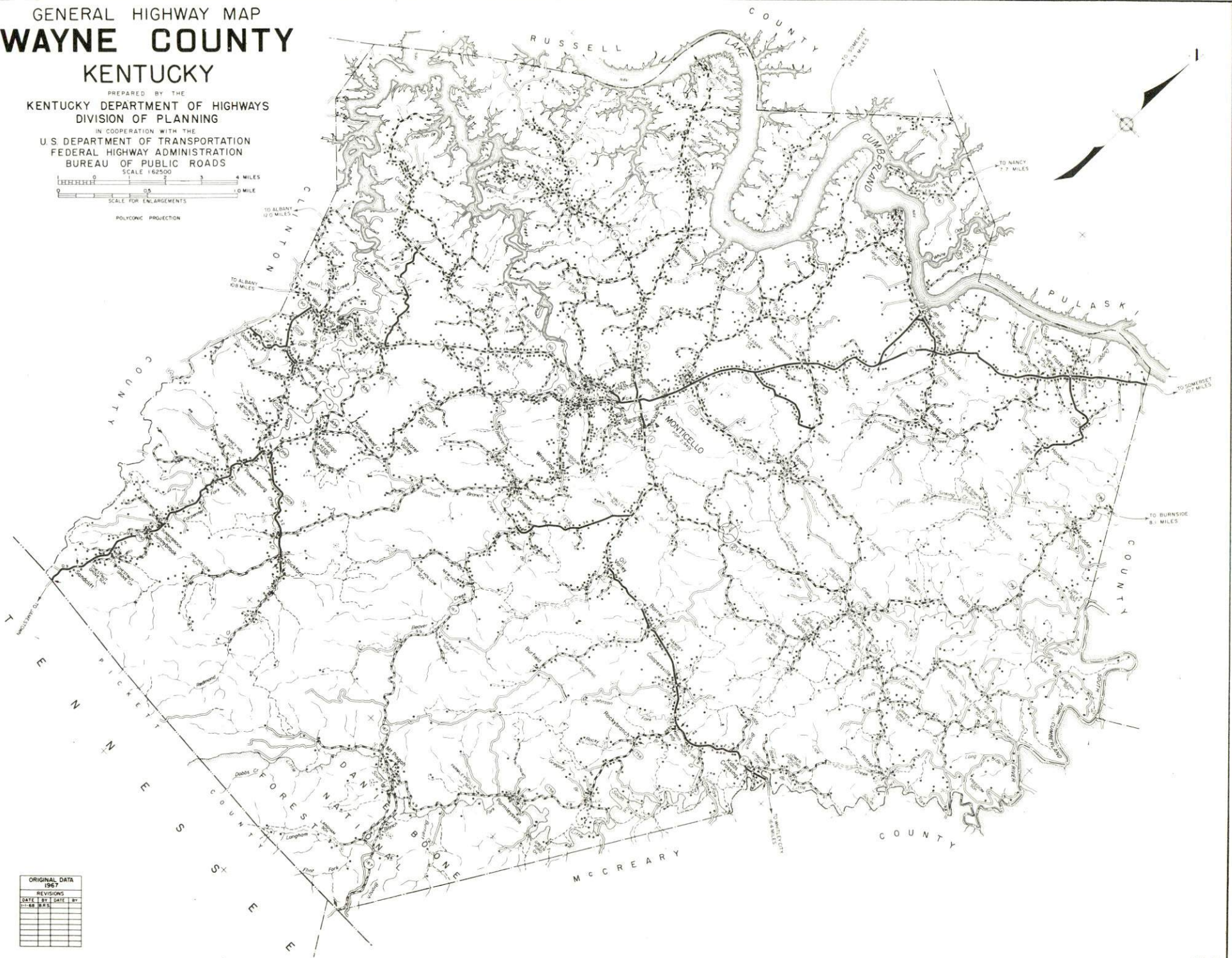
GENERAL HIGHWAY MAP WAYNE COUNTY KENTUCKY

PREPARED BY THE
KENTUCKY DEPARTMENT OF HIGHWAYS
DIVISION OF PLANNING

IN COOPERATION WITH THE
U.S. DEPARTMENT OF TRANSPORTATION
FEDERAL HIGHWAY ADMINISTRATION
BUREAU OF PUBLIC ROADS



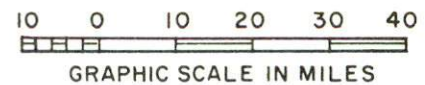
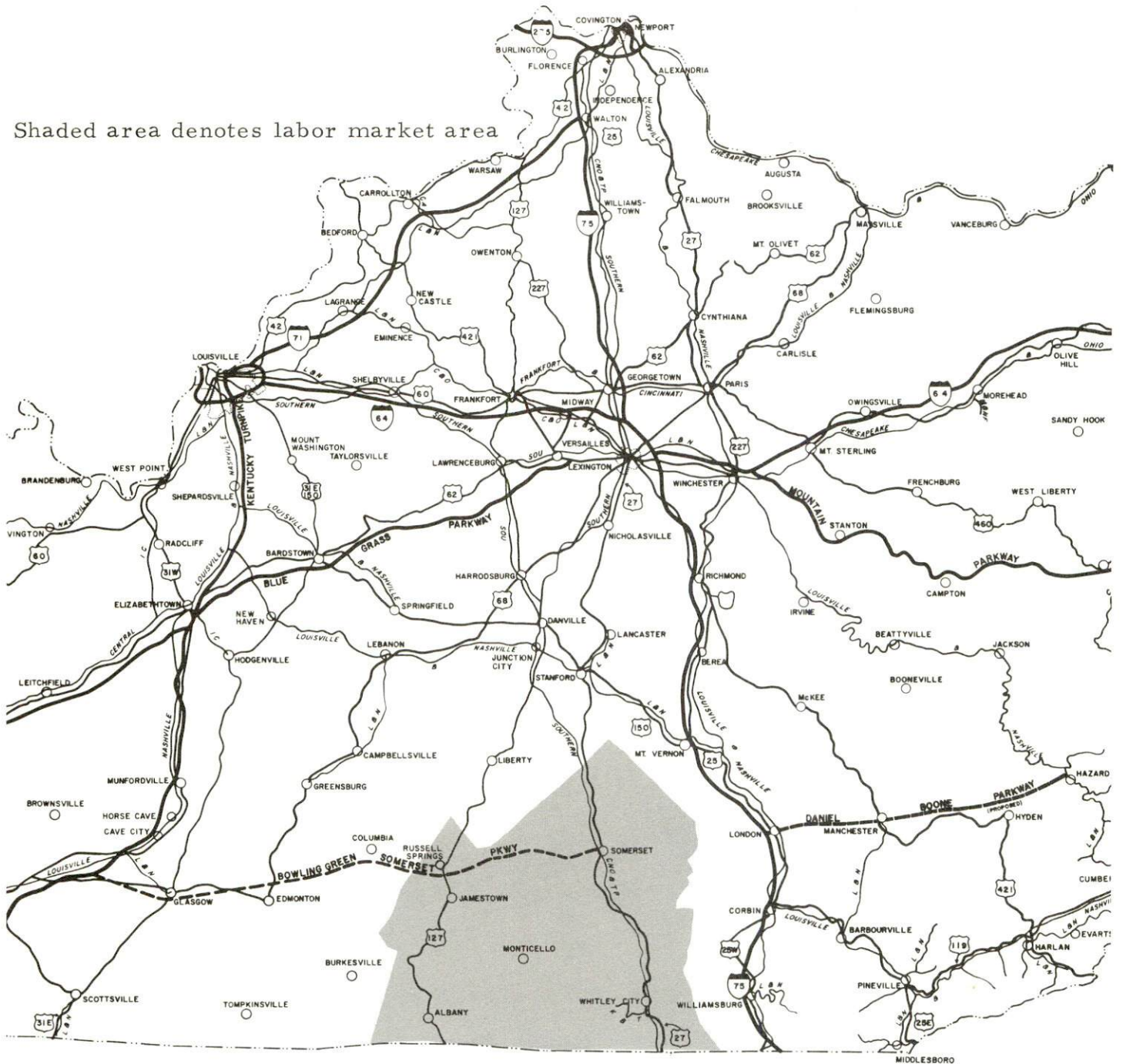
POLYCONIC PROJECTION



ORIGINAL DATA	1967
REVISIONS	
DATE	BY

MONTICELLO LABOR MARKET AREA

Shaded area denotes labor market area



MONTICELLO, KENTUCKY - A RESOURCE PROFILE

Location

Monticello, the county seat of Wayne County, is a thriving small community located in southcentral Kentucky, approximately 100 miles northwest of Knoxville, Tennessee, 173 miles southeast of Louisville, Kentucky, and 257 miles south of Cincinnati, Ohio.

Wayne County lies on the Kentucky-Tennessee border in the Pennyroyal Plateau region of Kentucky. Wayne County is bounded on the east by McCreary County, on the north by Russell and Pulaski Counties, and on the west by Clinton County.

The 1970 population of Monticello was 3,618. The 1970 population of Wayne County was 14,268.

The Economic Framework

Total employment in Wayne County averaged 3,500 in 1970 with agriculture accounting for 1,200 of these jobs, trade and services 400 jobs, and manufacturing 500 jobs. Major industrial products are apparel, lumber and wood products.

Per capita income in the county in 1969 was \$1,170, an increase of 70.3 percent since 1959.

In the Monticello labor market area, which includes Wayne and its four surrounding Kentucky counties, total employment in 1970 averaged 24,000. Agriculture provided 5,000 jobs, trade and services 3,600 jobs and government 4,000 jobs. Manufacturing furnishes 5,400 jobs. Area industrial employment has more than doubled since 1961 with sharpest gains in the apparel, lumber, and furniture industries.

Despite important industrial gains in recent years, the area still has a deficit of 2,344 manufacturing jobs when measured against the national industrial employment-population ratio. This indicates an area where the potential for additional manufacturing growth is excellent.

Resources for Growth

1. There is a current estimated labor supply of 6,050 men and 4,850 women available for industrial jobs in the labor market area. Moreover, the current labor supply would be increased by the number of men and women in the adjoining Tennessee county who are available for industrial jobs. In addition, by 1978 approximately 4,400 young men and 4,125

young women will have become 18 years of age and potentially available for work.

2. Monticello is served by Kentucky Highways 90, 92, and 789. The nearest railroad, the Southern Railway System, is located at Burnside, Kentucky, 21 miles distant. Commercial air service is available at London, Kentucky, approximately 64 miles away.

3. Energy - Electricity is available in large quantity in both Monticello and Wayne County. Natural gas is not available; however, other fuels are available in large supply.

4. Industrial sites - Monticello has a 40-acre industrial park.

5. There are two school systems in the county: the Monticello Independent School District and the Wayne County School System.

Monticello residents also enjoy proximity to Cumberland College located at Williamsburg, and to Somerset Community College, an extension of the University of Kentucky.

Furthermore, an area vocational school is located in Somerset, 29 miles distant, offering courses in twelve areas of learning, while the Wayne County Vocational Extension Center is now offering work in six course areas.

Community Programs for Improvement

1. The Monticello Banking Company recently purchased the adjoining building, doubled its space, and added a drive-in facility.

2. The Peoples State Bank recently purchased a building, completed renovation, and added a drive-in facility.

3. The new Wayne County Vocational Extension Center, located in Monticello, is in its first year of operation.

4. Monticello's community park was completed approximately two years ago. The park is lighted and has playground equipment, as well as basketball and volleyball courts.

5. Six new businesses have recently been established.

6. Larand Leisurelies, Inc., manufacturers of sleepwear located in Monticello in 1969.

7. Plans are underway to purchase a 750-gpm pumper truck and to enlarge and improve the building which houses the fire equipment.

8. Land has been acquired for a new airport and engineering plans have been completed. Facilities and services will include: an administration building with office space and hangar maintenance service, refueling, charter service, flight training, and lighting. The airport site provides for a 5,000-foot paved runway.

9. Improvement of a 7-mile section of Kentucky 90, beginning at Monticello and extending northeastward, will be completed in 1972. This will complete improvement of Kentucky 90 from Monticello to Burnside.

10. The new 40-bed Wayne County Hospital is situated on a site large enough for future expansion. Facilities include emergency room, OB section, X-ray, and laboratory.

11. A 114-acre park is being planned which will be located in Monticello and will be used for county-wide recreation. Facilities will include: picnic area, softball field, basketball court, and a 9-hole golf course.

12. Nine subdivisions are in various stages of development with building lots available. Three six-unit apartment buildings were recently completed.

13. Thirteen businesses are presently involved in renovation and/or expansion projects.

14. Three businesses are moving into new or refurbished buildings.

15. The General Telephone Company is now improving Monticello's telephone service. An underground conduit will replace the present aerial system. All of Monticello is being recabled. In addition, a new building is under construction to house new and added equipment for Monticello.

16. Monticello's application for a 100-unit low-rent housing project is now under review. Forty of the units are designated for the elderly.

17. The Monticello Board of Education is in the process of remodeling its high school. Improved facilities will include television equipment, intercom system, and a renovated gymnasium. The exterior of the building has been painted.

The school system's curriculum includes a dyslexia program, where students who require individual help are given one-to-one instruction in Grades 1-6. Plans include expanding this program through the twelfth grade and initiation of the Joplin Plan.

18. The Wayne County School System has several improvements either recently completed or currently underway. A new football field was completed in 1970 and a new 3,500-seat gymnasium was completed in 1972.

A 4 1/2-acre parking area provides ample parking space. A two-unit Home Economics Department, a new farm shop, a music room, and a two-unit Industrial Arts Department will be ready for use by September, 1972.

A library and multi-purpose room at Sinking Elementary School is to be built during 1972.

19. The city has purchased new aeration equipment for sewage treatment at a cost of approximately \$10,000. An additional \$30,000 is expected to be expanded for further treatment improvements.

20. Construction of a 300,000 gallon water storage tank will be underway by 1973.

Recreation, Entertainment and Livability

Monticello lies in the heart of some of the nation's best fishing country. The Lake Cumberland-Dale Hollow Reservoir area offers excellent fishing, particularly for bass, as well as boating, and other water sports. Two large commercial boat docks are located near Monticello. Located on Cumberland Lake are two parks, Lake Cumberland State Park and General Burnside Island State Park. Lake Cumberland State Park at Jamestown, 52 miles away is a 3,000-acre, resort-type park. Accommodations include a lodge, cottages and camping facilities. The park also has an Olympic-size pool and a new resort pool, bathhouse, boat and motor rental, paddle boats, houseboats, dock, launching ramp, fishing, 9-hole golf course, tennis, supervised recreation, hiking, horseback riding, picnic shelter and playground. Lake Cumberland, which averages 90 feet in depth, offers spectacular scenery along its 1,255 miles of shoreline. General Burnside Island State Park is located at Burnside, 21 miles distant. This 400-acre park has facilities for camping and swimming, bathhouse, beach, dock, fishing, 18-hole golf course, picnic area, and a playground. The northern branches of Dale Hollow Reservoir extend from Tennessee into neighboring Clinton County. Its shores are approximately 32 miles from Monticello.

Mill Springs Civil War Battle Site is also located in Wayne County, approximately 10 miles from Monticello.

Elsewhere in the area is Cumberland Falls State Park, located at Corbin approximately 65 miles distant. This 1,720-acre, resort-type park is in the Daniel Boone National Forest. The beautiful waterfall, enhanced by its moonbow during the full phase of the moon, is the park's primary attraction. Observation points overlook the woodland area and boulder-strewn gorge. The park also has a square dance pavilion, an Olympic-size swimming pool, fishing horseback riding, hiking, supervised recreation, picnic sites, and a playground.

THE LABOR MARKET

POPULATION TRENDS ^{1/}

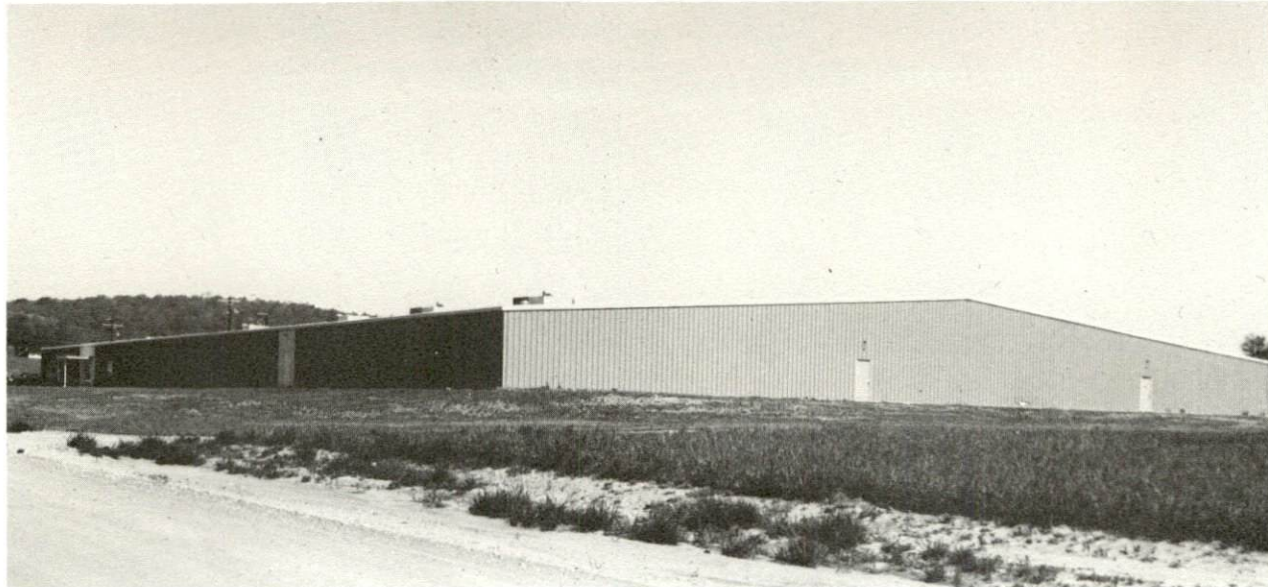
Area	Population			Percent Change	
	1970	1960	1950	1960-70	1950-60
Monticello	3,618	2,940	2,934	+23.1	+ 0.2
Labor Market Area	80,766	81,528	95,909	- 0.9	-15.0
Wayne County	14,268	14,700	16,475	- 2.9	-10.8
Clinton County	8,174	8,886	10,605	- 8.0	-16.2
McCreary County	12,548	12,463	16,660	+ 0.7	-25.2
Pulaski County	35,234	34,403	38,452	+ 2.4	-10.5
Russell County	10,542	11,076	13,717	- 4.8	-19.3

GENERAL EMPLOYMENT CHARACTERISTICS, 1970 ^{2/}

Major Employment Group	Employment	
	Wayne County	Labor Market Area
TOTAL	3,500	24,000
Agricultural	1,200	5,400
Nonagricultural	2,300	18,600
Manufacturing	500	4,940
Trade and Services	403	3,631
Government	500	4,000
Other	897	6,029

MANUFACTURING EMPLOYMENT TRENDS BY INDUSTRY SEPTEMBER 1971 AND 1961 ^{3/}

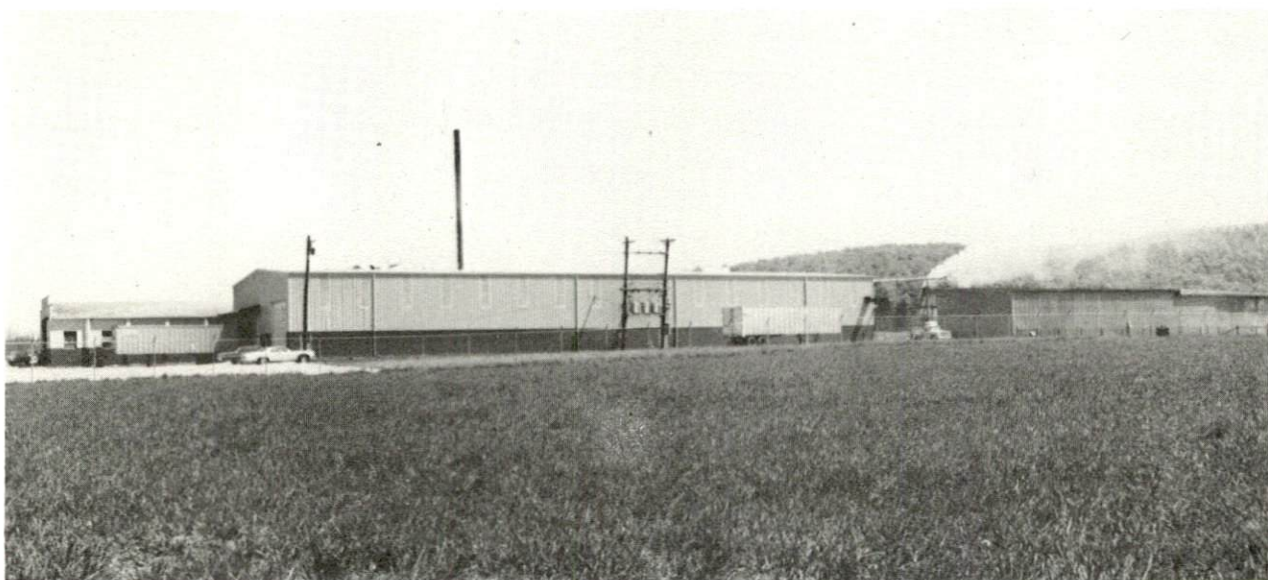
Industry	Wayne County			Labor Market Area		
	1971	1961	% Change	1971	1961	% Change
TOTAL	804	657	+22.40	5,329	2,486	+114.4
Food & kindred products	24	40	-40.00	267	284	- 6.0
Apparel, textiles, leather	376	330	+35.15	2,591	1,274	+103.4
Lumber & furniture	404	275	+47.00	1,615	686	+135.4
Chemicals, petroleum, coal, rubber	0	8	--	243	83	+192.8
Stone, clay & glass	0	4	--	375	119	+215.1
Machinery, metal products, & equipment	0	0	--	176	17	+935.3
Other	0	0	--	62	23	+169.6



LARAND LEISURELIES, INC.



MONTICELLO MANUFACTURING COMPANY



GAMBLE BROS. PLANT

MONTICELLO MANUFACTURING FIRMS,
THEIR PRODUCTS AND EMPLOYMENT ^{4/}

<u>Firm</u>	<u>Product</u>	<u>Employment</u>		
		<u>Total</u>	<u>Male</u>	<u>Female</u>
Bassett Products Co.	Crushed limestone, ready-mixed concrete	24	24	0
Frank Bell	Lumber	22	20	2
Christian Wood Products	Rough and dressed hardwoods	50	48	2
Dodson Block Co.	Concrete block	4	4	0
Farmers Supply & Produce Co.	Feed	6	5	1
Gamble Brothers	Machined wood parts	71	70	1
Huff Lumber Co.	Hickory dimension dowels	9	8	1
Larand Leisurelies, Inc.	Women's & children's sleepwear	168	15	153
D. P. Link Handle Co.	Hickory handle blanks, hickory barbecue wood and sawdust	11	11	0
Mago Construction Co.	Blacktop	25	25	0
			(seasonal)	
McCutchen & Pyles Lumber Co., Inc.		21	20	1
Monticello Flooring & Lumber Co.	Wood flooring, wood paneling & molding	50		
Monticello Machine Shop	Machine shop, conveyors, sawmill	17	16	1
Monticello Mfg. Co.	Men's shirts; ladies' blouses, shirts	240	40	200
Francis Stinson Lumber Co.	Rough lumber, crossties	6	6	0
Wayne County Outlook	Newspaper, job printing	3	2	1
Coy Worley	Lumber, crossties	19	19	0

WAGE RATES FOR SELECTED OCCUPATIONS
MONTICELLO, KENTUCKY ^{5/}

<u>Classification</u>	<u>Starting</u>	<u>Wages Per Hour</u>	
		<u>Maximum</u>	<u>Prevailing</u>
<u>Production Employees</u>			
Drill Press Operator	\$1.75	\$2.15	\$2.00
Inspector	1.60	2.00	1.75
Production Laborer	1.60	1.90	1.70
Welder, Arc or Acetylene (Class-A)	1.90	2.50	2.25
<u>Service Employees</u>			
Electrician (Class-A)	\$1.75	\$3.75	\$2.80
Laborer	1.60	1.75	1.70
Crane Operator	2.25	3.75	3.25
Mechanic, Maintenance	1.75	3.00	2.50
Truck Driver, Industrial (Class-A)	1.80	2.75	2.00
<u>Office Employees</u>			
Bookkeeper	\$1.75	\$2.50	\$2.00
File Clerk	1.60	2.00	1.90
Receptionist	1.60	2.25	1.90
Secretary	1.60	2.50	1.95
Typist	1.60	2.25	1.90

LABOR ORGANIZATIONS

There are no unions representing manufacturing workers at Monticello.

CURRENT AND FUTURE LABOR SUPPLY -
MONTICELLO LABOR MARKET AREA

<u>Area</u>	<u>Current Labor Supply, 1971</u> ^{6/}			<u>Future Labor Supply by 1978</u> ^{7/} (Becoming 18 Years of Age)		
	<u>Total</u>	<u>Male</u>	<u>Female</u>	<u>Total</u>	<u>Male</u>	<u>Female</u>
Labor Market						
Area	10,909	6,050	4,859	8,532	4,404	4,128
Wayne County	2,371	1,366	1,005	1,558	793	765
Clinton County	1,562	1,075	487	789	412	377
McCreary County	1,731	742	989	1,541	824	717
Pulaski County	3,309	1,692	1,617	3,599	1,851	1,748
Russell County	1,936	1,175	761	1,045	524	521

TOTAL PERSONAL INCOME ^{8/}

<u>Area</u>	<u>1969</u>	<u>1959</u>	<u>% Change</u>
Wayne County	\$ 16,982,000	\$ 9,920,000	+ 71.2
Labor Market Area	142,311,000	62,497,000	+127.7
Kentucky	9,202,000,000	4,655,000,000	+ 97.6

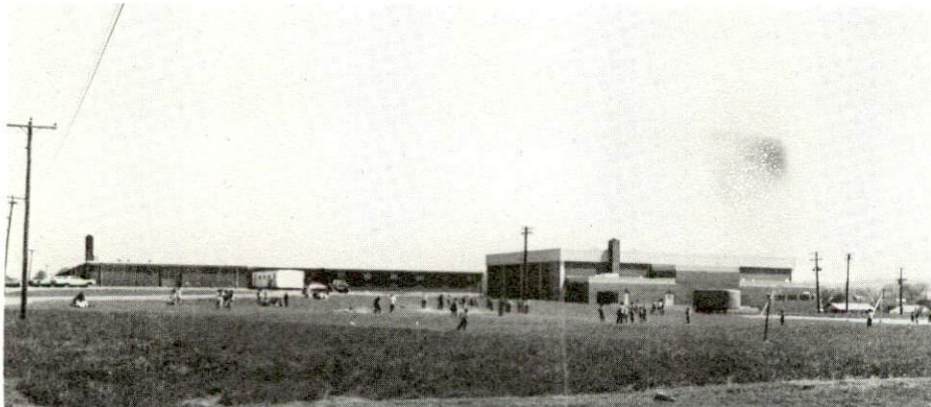
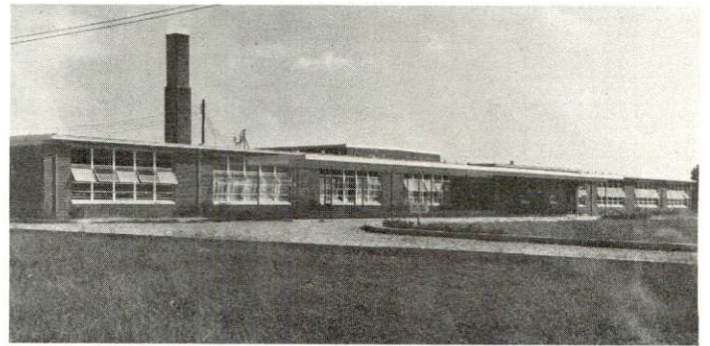
PER CAPITA PERSONAL INCOME ^{9/}

<u>Area</u>	<u>1969</u>	<u>1959</u>	<u>% Change</u>
Wayne County	\$1,170	\$687	+70.3
Labor Market Area	\$984- 2,360	\$563- 953	N. A.
Kentucky	\$2,847	\$1,552	+83.4



MONTICELLO CITY SCHOOL

WAYNE COUNTY
ELEMENTARY SCHOOL



WAYNE COUNTY
HIGH SCHOOL

EDUCATION

Public Schools

	<u>Monticello Independent</u>	<u>Wayne County</u>
Total Enrollment	635	2,761
Elementary	469	1,642
Junior High		407
High School	166	712
Student-Teacher Ratio	19-1	23-1
Elementary	21-1	23-1
Junior High		25-1
High School	15-1	21-1
State Rating of High School	Standard	Standard
Percent High School Graduates to College	62.2	34.3
Current Expenditure Per Pupil	\$432.21	\$441.95
Bonded Indebtedness as of June 30, 1971	\$137,000	\$1,455,000

Vocational Schools

	<u>Nearest Area School</u>	<u>Nearest Extension Center</u>
	Somerset Area Vocational School	Wayne County Extension Center
Location	Somerset	Monticello
Miles Distant	29 miles	
Curriculum	Data processing General clerical Secretarial steno Distributive education Health careers Electronics Aircraft technician - maintenance Appliance repair Auto mechanics Drafting Machine shop Printing	General clerical Secretarial-Steno Health careers Auto mechanics Machine shop Welding

Colleges and Universities

<u>Name</u>	<u>Area - Within 70 miles</u>		<u>Highest Degree Conferred</u>
	<u>Location</u>	<u>Enrollment</u>	
Somerset Community College	Somerset	682	Associate
Cumberland College	Williamsburg	1,807	Baccalaureate
Lindsey Wilson Junior College	Columbia	324	Associate
Sue Bennett Junior College	London	181	Associate

TRANSPORTATION

Rail

The nearest rail service is provided by the Southern Railway System at Burnside, Kentucky, 21 miles distant

Services - freight (car load only), switching, siding

RAILWAY TRANSIT TIME FROM BURNSIDE, KENTUCKY, TO: 10/

<u>City</u>	<u>No. of Days CL</u>	<u>City</u>	<u>No. of Days CL</u>
Atlanta, Ga.	2	Los Angeles, Calif.	8
Birmingham, Ala.	2	Louisville, Ky.	2
Chicago, Ill.	4	Nashville, Tenn.	4
Cincinnati, Ohio	2	New Orleans, La.	3
Cleveland, Ohio	4	New York, N. Y.	5
Detroit, Mich.	4	Pittsburgh, Pa.	4
Knoxville, Tenn.	2	St. Louis, Mo.	3

Truck Service

Company

Eldridge Truck Line
 McLean Trucking Company
 Manning Motor Express, Inc.
 United Parcel Service, Inc.

Home Office

Science Hill, Kentucky
 Winston-Salem, North Carolina
 Glasgow, Kentucky
 St. Charles, Illinois

HIGHWAY MILES AND TRUCK TRANSIT TIME IN DAYS FROM
MONTICELLO, KENTUCKY, TO SELECTED MARKET CENTERS

City	Highway Miles	Delivery Time <u>11</u> / LTL TL		City	Highway Miles	Delivery Time LTL TL	
		Atlanta, Ga.	259			3	2
Birmingham, Ala.	193	2	2	Louisville, Ky.	173	2	2
Chicago, Ill.	301	3	2	Nashville, Tenn.	285	1	1
Cincinnati, Ohio	257	2	2	New Orleans, La.	710	3	3
Cleveland, Ohio	527	3	2	New York, N. Y.	942	4	3
Detroit, Mich.	514	3	2	Pittsburgh, Pa.	567	3	3
Knoxville, Tenn.	100	2	2	St. Louis, Mo.	437	2	2

Air

	<u>Local</u>	<u>Nearest Commercial</u>
	Monticello Airport	London-Corbin War Memorial Airport
Location:	1 mile northeast of Monticello	67 miles northeast of Monticello
Runways:	1 turf	1 paved
Length:	2,200 feet	6,000 feet
Traffic		
Control:	Wind tee and wind sock	Wind sock
Lighting:	None	Beacon, runway and obstruction lights
Services:	80 octane gasoline, tie down, A & E repairs, restaurant and motel nearby, 8 a.m. to 5 p.m. - 7 day week	80 and 100 octane, JP-A-50, Piedmont Airlines, taxi, U- Drive-It, weather, flight train- ing, charter and ambulance service, vending machines

Bus - Greyhound Bus Lines and Somerset and Suburban Carriers, Inc.,
are located at Somerset, 29 miles distant.

Taxi - Two companies - 24 hour service

Rental Services - Nearest car rental services are at Somerset, 29 miles
distant.

POWER AND FUEL

Electricity

Company serving Monticello - Monticello Electric Plant Board

Source of power - Tennessee Valley Authority

Total generating capacity - 19,400,000 KW

Industrial rates furnished by - Monticello Electric Plant Board,
Monticello, Kentucky

Company serving Wayne County - South Kentucky RECC

Source of power - East Kentucky Power Cooperative

Total generating capacity - 548,000 KW

Industrial rates furnished by - South Kentucky RECC, Somerset,
Kentucky

Natural Gas

Natural gas service is not available in Monticello.

Other Fuels

Propane - Suburban Propane-VerKamp Corporation, Monticello;
Pyrofax-Service, Somerset, 29 miles; Nead and Holiday, Burnside,
21 miles

Distillate fuel oil - Standard Oil, Ashland Oil, Somerset Oil - all have
bulk stations in Monticello

Residual fuel oil - Arrangements must be made with the refinery.

Low sulphur content coal - Available within Wayne County.

WATER AND SEWERAGE

Water

Company serving - Monticello Water and Sewer Commission

Source - Lake Cumberland

Treatment plant capacity - 1,000,000 gpd

Average daily consumption - 400,000 gallons

Peak daily consumption - 500,000 gallons

Type treatment - coagulation with alum and lime, filtration, chlorination, fluoridation

Storage capacity - 300,000 gallons

Size mains - 10, 8 and 6 inches

Average pressure - 60 psi

MONTHLY WATER RATES FOR WHOLESALE AND INDUSTRIAL CONSUMERS

Commercial (inside city limits)

First	700 gals. per month	\$3.00 (minimum bill)
	701 to 1,500 gals. per month	3.50 (minimum bill)
	1,501 to 2,500 gals. per month	4.25 (minimum bill)
Next	7,500 gals. per month	.90 per M gals.
Next	20,000 gals. per month	.50 per M gals.
Over	30,000 gals. per month	.40 per M gals.

Outside city limits (all customers)

First	2,500 gals. per month	\$5.00 (minimum bill)
Next	2,000 gals. per month	1.00 per M gals.
Next	2,000 gals. per month	.85 per M gals.
Over	65,000 gals. per month	.50 per M gals.

Surface water sources - Lake Cumberland and Little South Fork of Cumberland River

Average discharge - Cumberland River at Cumberland Falls (neighboring McCreary County) 3,099 cfs (60 years USGS)

Expected ground water yield - 5 to 50 gpm in band in northwestern part of county; 5 gpm or less over remainder of county

Sewerage

Company serving Monticello - Monticello Water and Sewer Commission

Design capacity - 336,000 gpd

Average daily flow - 185,000 gallons

Treatment - primary and secondary

Type treatment - Digester, clarifier, drying beds

Treated effluent discharged into - Elk Creek

Size of sanitary mains - 8 and 10 inches

Rates - 50 percent of water rates; maximum \$5 residential,
\$50 commercial

LOCAL GOVERNMENT

City

Structure - Mayor - 4-year term; 6 councilmen - 2-year terms
 Budget 1972 - General Fund \$105,000; Water and Sewer Fund
 \$150,000

Fees and licenses - Annual business licenses range from \$3 to \$600.

County

Structure - County Judge - 4-year term; 7 magistrates - 4-year terms
 Budget 1971-72 - General Fund \$81,454; Road Fund \$38,940

Assessed Value of Property

<u>Classes of Property*</u>	<u>Monticello</u>	<u>Wayne County</u>
Real Estate	\$9,121,628 (1972)	\$43,930,045 (1971)
Tangibles	2,666,943 (1972)	7,816,914 (1971)
Public Service		4,145,403 (1970)

Local General Property Tax Rates Per \$100 of Assessed Valuation, 1971 ^{12/}

<u>Taxing Unit**</u>	<u>Monticello</u>	<u>Wayne County</u>
State	\$.015	\$.015
County	.364	.364
School	.595	.330
City	.210	--
Total	\$1.184	\$.709

*Property assessed at 100 percent of fair value.

**Manufacturing machinery, raw materials inventories and goods in process inventories are not subject to local tax. State rate is only \$.15 per \$100.

Planning and Zoning

Agency - Monticello-Wayne County Planning Commission
Plans completed - Comprehensive Plan, Subdivision Regulations and Zoning Ordinance for city of Monticello only
Plans in process - Housing Study and Comprehensive Plan to be joint city-county plans

Safety

<u>Police</u>	<u>Monticello</u>	<u>Wayne County</u>
Total staff	4	3
Radio-patrol cars	1	1

Fire

American Insurance Association Fire Rating	7
Volunteers	19
Equipment:	
500 gpm pumper	1
350 gpm pumper	1

Rescue Service

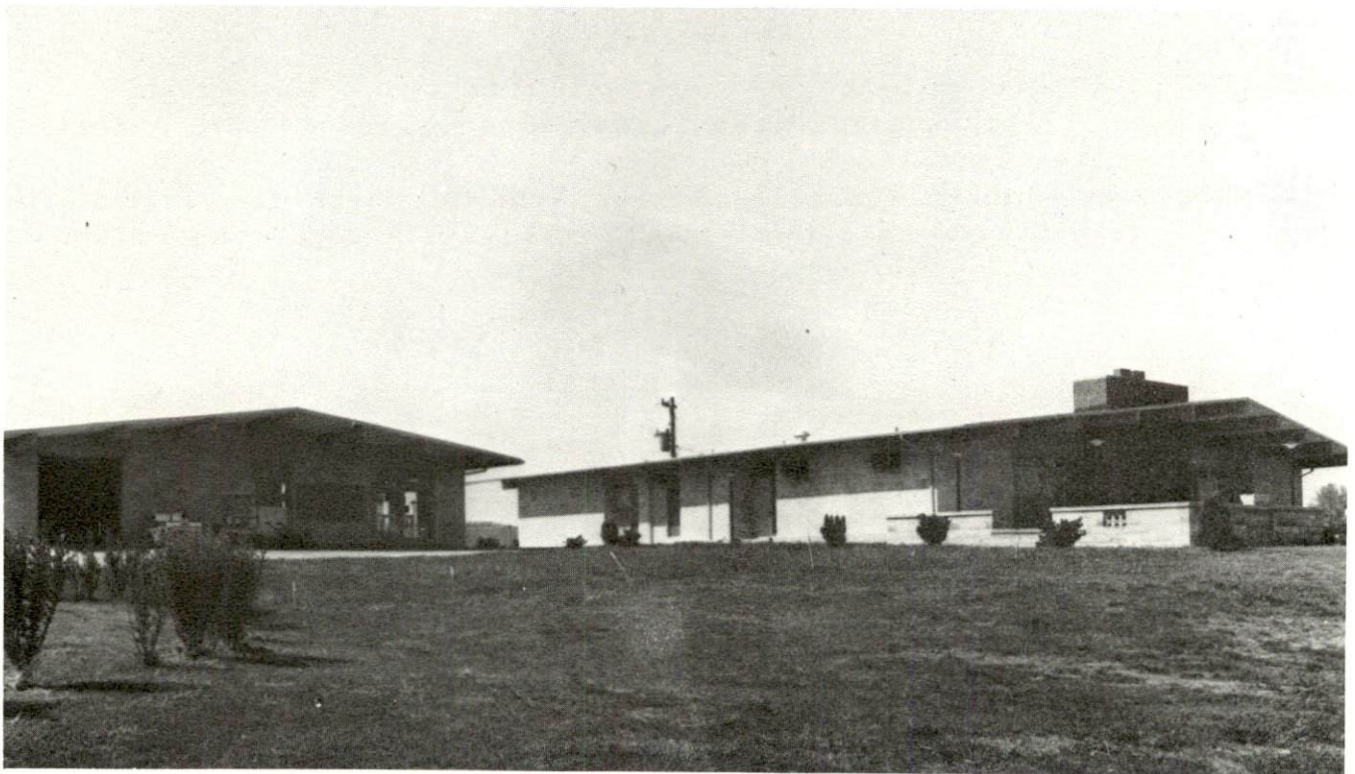
Monticello - Wayne County Rescue Squad
Number of volunteers - 26
Equipment - two pick-up trucks; one ambulance; three Thundercraft boats, 800 lbs. capacity; three aluminum boats; three outboard motors; dragging equipment
Personnel training - Training has been provided in connection with the Civil Defense and Red Cross organizations. The Rescue Squad has also been trained in radiological monitoring.

Sanitation

	<u>Monticello</u>
Type service	municipal
Cost:	
residential	\$1.50 per month
business	\$3 - \$20 per month
Collection frequency:	
residential	weekly
business	semi-weekly
Disposal method	sanitary land fill



WAYNE COUNTY HOSPITAL



MONTICELLO COUNTRY CLUB

HEALTH

Hospitals

<u>General Hospital</u>	<u>Location</u>	<u>Beds</u>
Wayne County Hospital (under construction)	Monticello	40
Somerset City Hospital	Somerset, 29 miles distant	113

Wayne County Hospital

General hospital facilities - Emergency room, OB section, X-ray, laboratory

Medical staff - When fully staffed, 60 to 80 stationed personnel will be employed by the hospital.

Somerset City Hospital

General hospital facilities - Physical therapy, radiology (X-ray) including nuclear medicine, pathology (laboratory), blood bank, recovery room, coronary care unit, 3 emergency rooms with observation room, outpatient service serving approximately 36,000 patients annually, 5 operating rooms, drug room, medical records, inhalation therapy, maintenance, laundry, home health service for a 10-county area, training facility for nursing students from Berea College, for students obtaining associate degrees in nursing and medical laboratory technicians from Somerset Community College, and vocational training for nurses aides, orderlies, ward clerks, obstetrical aides, surgical technicians and home health personnel; center for Region 14 Emergency Medical Communications Plan (HEAR).

Medical staff - 22 physicians (full time), 23 physicians (courtesy), 9 dentists, 40 registered nurses, 48 licensed practical nurses, 3 honorary members of medical staff, 6 emergency room physicians, 282 full-time employees, * 65 part-time employees. *

Other

Wayne County Health Mental Retardation, Monticello

Staff - Mental Health Associate (full-time), Area Team Coordinator
(2 1/2 days weekly)

*This includes employees in the home health agency which is a department of Somerset City Hospital.

Lake Cumberland Comprehensive Care Center, Somerset (central headquarters - serving 10-county area)

Professional personnel - 2 psychiatrists, chief psychologist, psychologist, mental health educator school consultant, 2 clinical coordinators, social worker supervisor, 4 area team social workers, psychiatric nurse, area team nurse, volunteer coordinator, day care supervisor, alcoholism counselor, 10 mental health associates, childrens service specialist, day care aide, mental retardation director, mental retardation day care, mental retardation master school teacher

Nursing Homes

	<u>Number</u>	<u>Beds</u>
Personal care homes	1	24

Public Health

Facility - Wayne County Health Department
Staff - Medical clinician, 2 registered nurses, 2 sanitarians, clerk
Budget 1971-72 - \$303,675 - (Lake Cumberland District Health Department includes 5 counties.)

Ambulance Service

There are three independent firms providing ambulance service in Monticello.

OTHER LOCAL FACILITIES

Communications

Telephone - General Telephone Company
Services - Standard

Telegraph - Western Union Telegraph Company - Somerset
Services - Standard

Postal - U. S. Post Office
Class - First
Mail received - once daily
Mail dispatched - once daily

Newspapers - Wayne County Outlook
Weekly and circulation - 3,600
Other papers received from - Lexington, Louisville and Somerset,
Kentucky

Radio - WFLW, AM-FM
Stations received from - Lexington and Louisville, Kentucky; Knoxville
and Nashville, Tennessee

Television - Cable service
Reception from - Lexington and Louisville, Kentucky; Nashville and
Knoxville, Tennessee
Kentucky Educational Television - Channel 29 - Somerset transmitter

Library Services

Public Library - Wayne County Library
Size collection - 23,670 volumes
Circulation, 1970-71 - 81,927 (Library and Bookmobile)
Services - Bookmobile, magazines, film-strips, microfilm, films,
phonograph records, framed paintings, audio-visual equipment,
story hour for preschool children, summer reading program for youth
10-14 years of age, Great Books discussion for adults

Religious Institutions

Number of churches - 15
Denominations - Baptist, Christian, Church of Christ, Church of God,
Methodist, Nazarene, Catholic, Jehovah's Witnesses



MONTICELLO BANKING COMPANY



PEOPLES STATE BANK

Financial Institutions

<u>Bank</u>	<u>Statement as of December 31, 1971</u>	
	<u>Assets</u>	<u>Deposits</u>
The Monticello Banking Co.	\$10,684,582.58	\$9,368,594.17
Peoples State Bank	6,308,663.59	5,586,204.30

Hotels and Motels

Number - 3
Units - 104

Clubs and Organizations

Business and Civic - Lions Club, Kiwanis Club, Monticello-Wayne County Development Board, Jaycees, Wayne County Chamber of Commerce, PTA

Fraternal - Masonic Lodge, VFW, American Legion, DAV

Women's - Eastern Star, Business and Professional Women's Club, Women's Club

Youth - Boy Scouts, Cub Scouts, Little League baseball and football, FFA, FHA, FBLA, FTA, 4-H Club, Junior Conservation, Demolay, Girl Scouts, Brownies, Key Club, Y-Teens

Other - Wayne County Sportsman Club



MONTICELLO MOTEL



ANCHOR MOTEL



EXECUTIVE MOTOR INN

RECREATION

Local

Public Recreation Facilities

- Supervised program - yes
- Parks - 2
- Playgrounds - 8
- Tennis courts - 4
- Baseball diamond - 1
- Football field - 1

Private Recreation Facilities

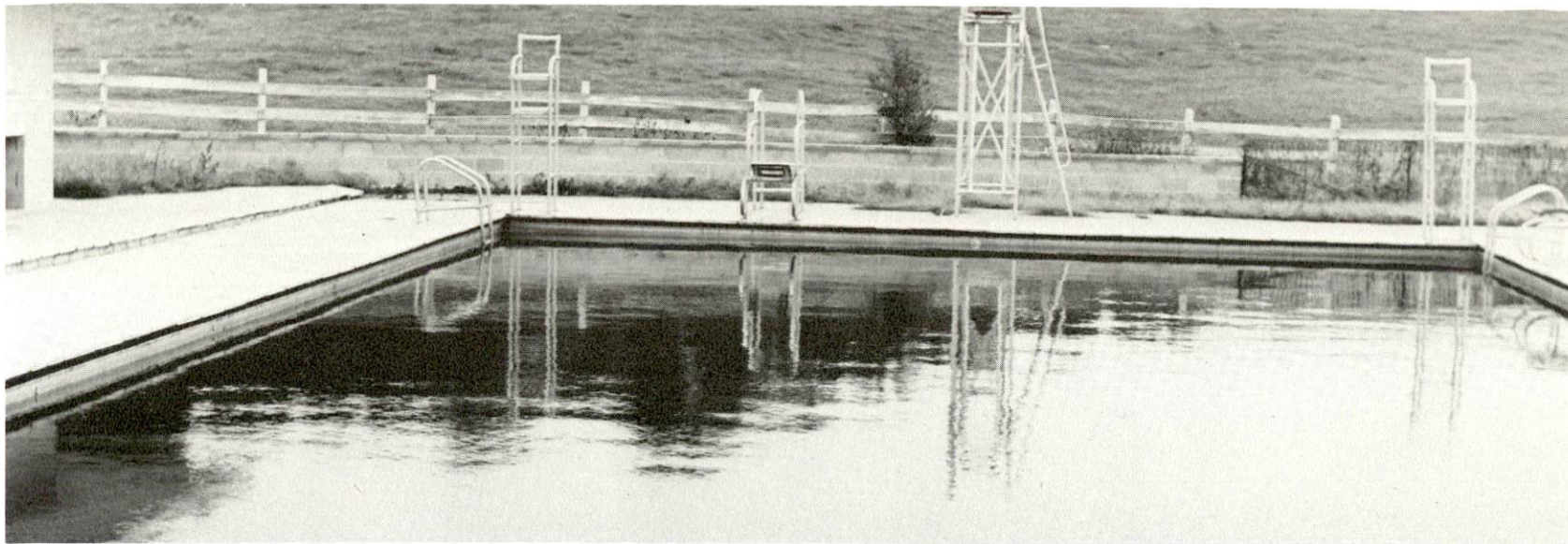
- Country club - 1
- Golf courses - 1 (9-hole)
- Swimming pools - 2
- Movie theater - 1 drive in
- Other - billiards

Tourist Attractions

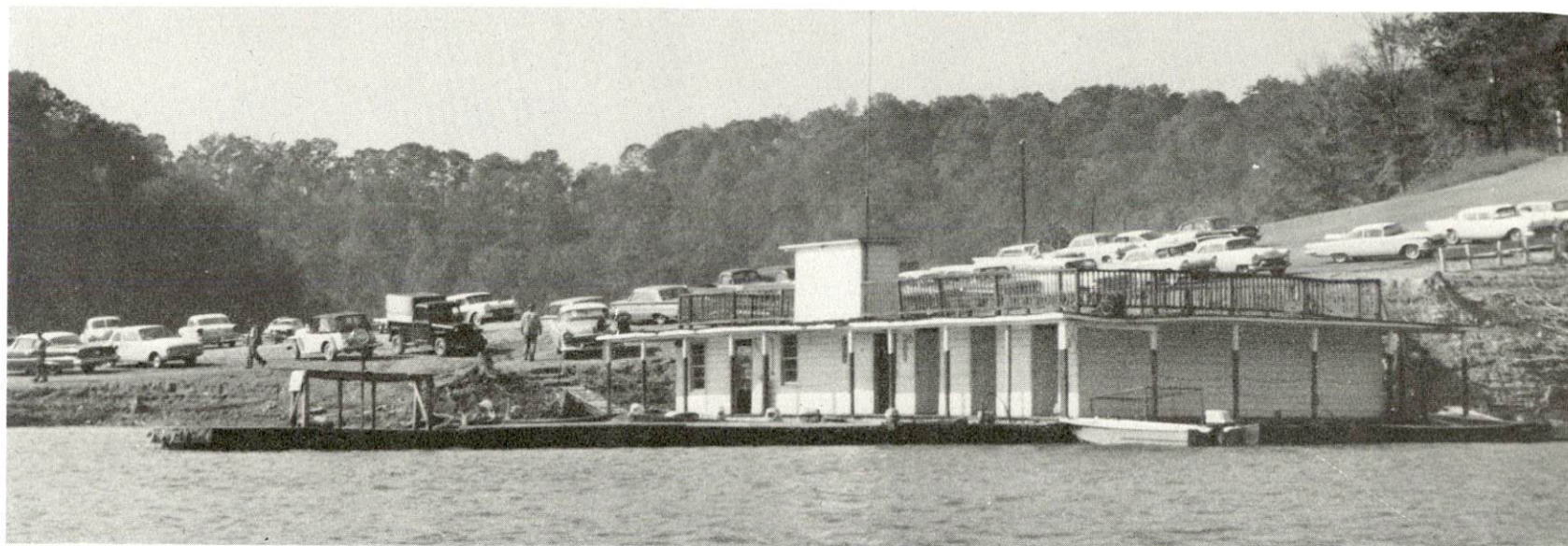
Lake Cumberland is within 8 miles of Monticello. Two commercial docks in the county are Beaver Lodge Dock and Conley Bottom Dock. Mill Springs Civil War Battle Site is approximately 10 miles from Monticello.

Area (Within 60 miles)

Lake Cumberland State Resort Park
General Burnside Island State Park
Cumberland Falls State Resort Park
Dale Hollow Reservoir



STARDUST SWIMMING POOL



CONLEY BOTTOM FISHING DOCK

AGRICULTURE - NATURAL RESOURCES - CLIMATE

Agriculture 13/

	<u>Wayne County</u>	<u>Labor Market Area</u>
Total land area (acres)	281,600	887,680
Percent of area in farm land	59.4	75.9
Number of farms	1,374	7,625
Average size of farms (acres)	121.7	88.4
1964 value of all farm products	\$ 4,749,848	\$ 21,566,375
Value per farm	3,457	2,828
Total crop sales	2,352,565	10,971,462
Total livestock & livestock products	2,395,732	10,567,358
1969 agricultural production included:		
Burley tobacco (lbs.)	2,679,000	14,102,000
Corn (bu.)	540,000	2,195,000
Cattle and calves (number)	22,800	124,900
Hogs and pigs (number)	12,600	41,300
Milk production, 1968 (lbs.)	17,655,000	131,240,000

Natural Resources

Principal mineral resources	limestone, coal, petroleum
Other mineral resources	natural gas, bonding type clays
Acres of commercial forest land	177,900
Most abundant tree species	White oak, red oak, hickory, yellow poplar, yellow pine, beech, and hard maple

Climate 14/

	<u>Wayne County</u>
Temperature	
Annual mean (30-year record)	59.6 degrees
Average annual 1971	59.2 degrees
Record highest, August, 1968 (11-year record)	99.0 degrees
Record lowest, January, 1966 (11-year record)	- 9.0 degrees
Seasonal heating degree-days (30-year record)	3,494
Precipitation	
Mean annual total (30-year record)	48.85 inches
Mean annual snow and sleet (29-year record)	13.10 inches
Total precipitation 1971	50.44 inches
Mean number days precipitation (.01 inch or more) (29-year record)	127
Average number days thunderstorms (29-year record)	48
Prevailing winds (14-year record)	Southeast

HISTORY

Wayne County, established in 1800 as the forty-third Kentucky County, has a land area of 440 acres. It was named for General "Mad" Anthony Wayne, who organized and commanded a regiment in the Continental Army.

Wayne County was one of the sixty-five counties represented in a convention which convened at Russellville in Logan County in 1861 to consider the secession of Kentucky from the Union. Although this convention actually went on record as declaring Kentucky a member of the Southern Confederacy, not much resulted from the assertion. However, the county saw a great deal of wartime activity.

Cumberland Lake gives the county a great amount of water surface since it backs up into the valleys of the smaller streams. Such areas are among the most sought by fishermen. Each year thousands of visitors come to the lake and thousands of dollars are added to the county's economy. The soil is fertile since it has a limestone base. There are large deposits of coal, principally in the eastern half, and oil is abundant. It was from a contemplated salt well that an oil gusher burst in 1817 which not only ruined other salt wells in the vicinity, but also covered the surface of the Cumberland River for several miles downstream. Wayne County has a fairly solid claim of having the first oil well in the country.

Monticello, the county seat, was named for the Thomas Jefferson estate in Virginia although it has a different pronunciation.

In 1800 the population of Wayne County was 8,692. There was a gradual increase in population until 1910 when it reached 17,518. Since 1910 there has been a gradual decline in Wayne County's population with the exception of 1940 when the population was 17,204. The 1970 population was 14,268, while the 1970 population of Monticello was 3,618.

Agriculture accounted for 1,200 of the county's 3,500 employed in 1970. Between 1961 and 1971 manufacturing employment in the county increased 22.4% or 147 jobs, with the greatest employment in the apparel and lumber industries. Largest among Monticello's industries are Larand Leisurlies, manufacturers of women's and children's sleepwear, and Monticello Manufacturing Company, which produces men's shirts and ladies' blouses.

SOURCES OF INFORMATION

- 1/ U. S. Department of Commerce, Bureau of the Census, Census of Population, 1950, 1960, 1970.
- 2/ Kentucky Department of Economic Security, Division of Research and Statistics.
- 3/ Kentucky Department of Economic Security, Number of Workers in Manufacturing Industries Covered by Kentucky Unemployment Insurance Law Classified by Industry and County, September 1971 and 1961.
- 4/ Kentucky Department of Commerce, 1972 Kentucky Directory of Manufacturers. City of Monticello.
- 5/ Kentucky Department of Economic Security, Division of Employment Services, Somerset Office.
- 6/ Kentucky Department of Economic Security, Kentucky Labor Supply Estimates by County, January 1971.
- 7/ Kentucky Department of Commerce, Future Labor Supply by 1978.
- 8/ University of Kentucky, Office of Development Services and Business Research, Total Personal Income for Kentucky.
- 9/ University of Kentucky, Office of Development Services and Business Research, Per Capita Income in Kentucky.
- 10/ Southern Railway System, Louisville, Kentucky
- 11/ Manning Motor Express, Inc., Glasgow, Kentucky
- 12/ Kentucky Department of Revenue, Kentucky Property Tax Rates, 1971.
- 13/ U. S. Department of Commerce, Bureau of the Census, Census of Agriculture, 1964. U. S. Department of Agriculture and Kentucky Department of Agriculture, Kentucky Agricultural Statistics, 1970.
- 14/ U. S. Department of Commerce, Environmental Science Services Administration, Climatological Data, 1971.

All other information was obtained from governmental offices, local businesses and organizations.