

1988

Industrial Resources: Wolfe County - Campton

Kentucky Library Research Collections
Western Kentucky University, spcol@wku.edu

Follow this and additional works at: https://digitalcommons.wku.edu/wolfe_cty

 Part of the [Business Administration, Management, and Operations Commons](#), [Growth and Development Commons](#), and the [Infrastructure Commons](#)

Recommended Citation

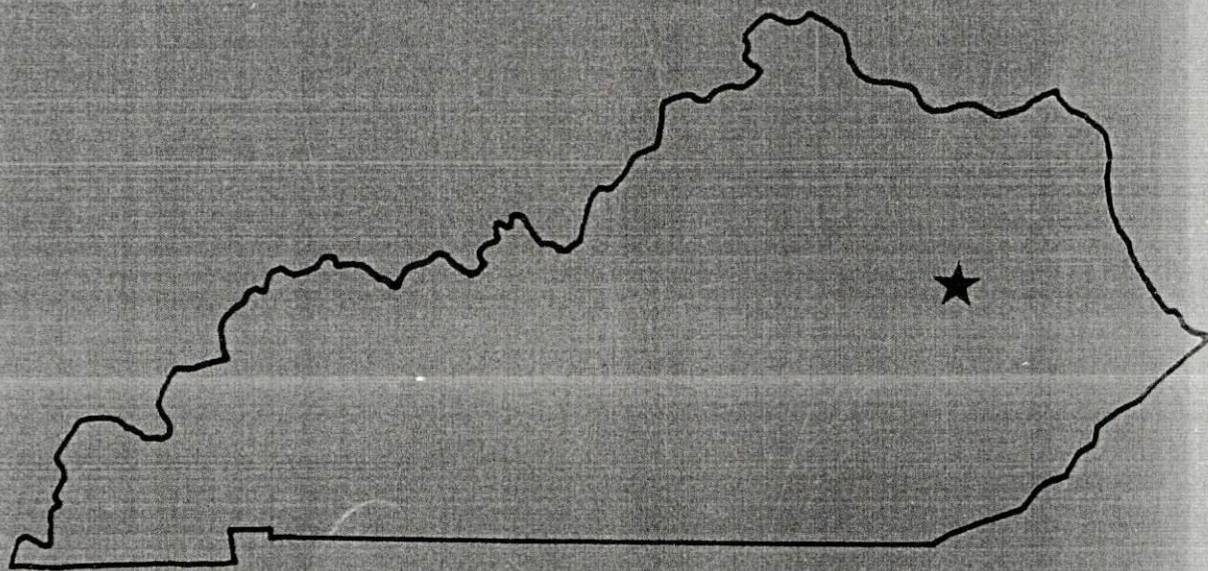
Kentucky Library Research Collections, "Industrial Resources: Wolfe County - Campton" (1988). *Wolfe County*. Paper 6.
https://digitalcommons.wku.edu/wolfe_cty/6

This Report is brought to you for free and open access by TopSCHOLAR®. It has been accepted for inclusion in Wolfe County by an authorized administrator of TopSCHOLAR®. For more information, please contact topscholar@wku.edu.

FR
522 Wolfe County, Ky

RESOURCES FOR ECONOMIC DEVELOPMENT

Campton



KENTUCKY
The business environment is right.

CAMPTON, KENTUCKY --- Site 188 --- 44 Acres

For more information contact the Kentucky Department of Economic Development, Industrial Development & Marketing Division, Capital Plaza Tower, Frankfort, Kentucky 40601 (502-564-7140).



LOCATION: Approximately 0.8 mile west of Campton city limits
ZONING: None
HIGHWAY ACCESS: Paved county road (Quillens Chapel) along northern and western boundaries; Mountain Parkway interchange approximately 1.0 mile east via paved county road
RAILROAD: Not rail served
WATER: City of Campton Water Works
Size Line: 6-inch line along western and southern boundaries
SEWERAGE: City of Campton Sewerage Service
Size Line: 6-inch line approximately 1.1 mile southeast along south side of Quillens Chapel Road
NATURAL GAS: Natural gas service presently not available
ELECTRICITY: Licking Valley RECC
OWNERSHIP: Wolfe County Fiscal Court

Existing Industries
A Computer Peripherals, Inc.

SCALE: 1 inch = 2000 feet
CONTOUR INTERVAL: 20 feet
BASE: USGA 7.5 minute series - 1972

UTILITIES
--- Water Line
--- Sewer Line

RESOURCES FOR ECONOMIC DEVELOPMENT
CAMPTON, KENTUCKY

Prepared by
The Kentucky Department of Economic Development
Division of Research and Planning
in cooperation with
The City of Campton

1988

Program manager - Andrew Dennis; research - Barry K. Holder, Jr.; clerical - Bobbi Graves; graphics - Tony Cecconi, Robert Owens, Pat Coleman; cartography - Site Evaluation Branch, Division of Industrial Development and Marketing. Cost of printing paid from state funds.

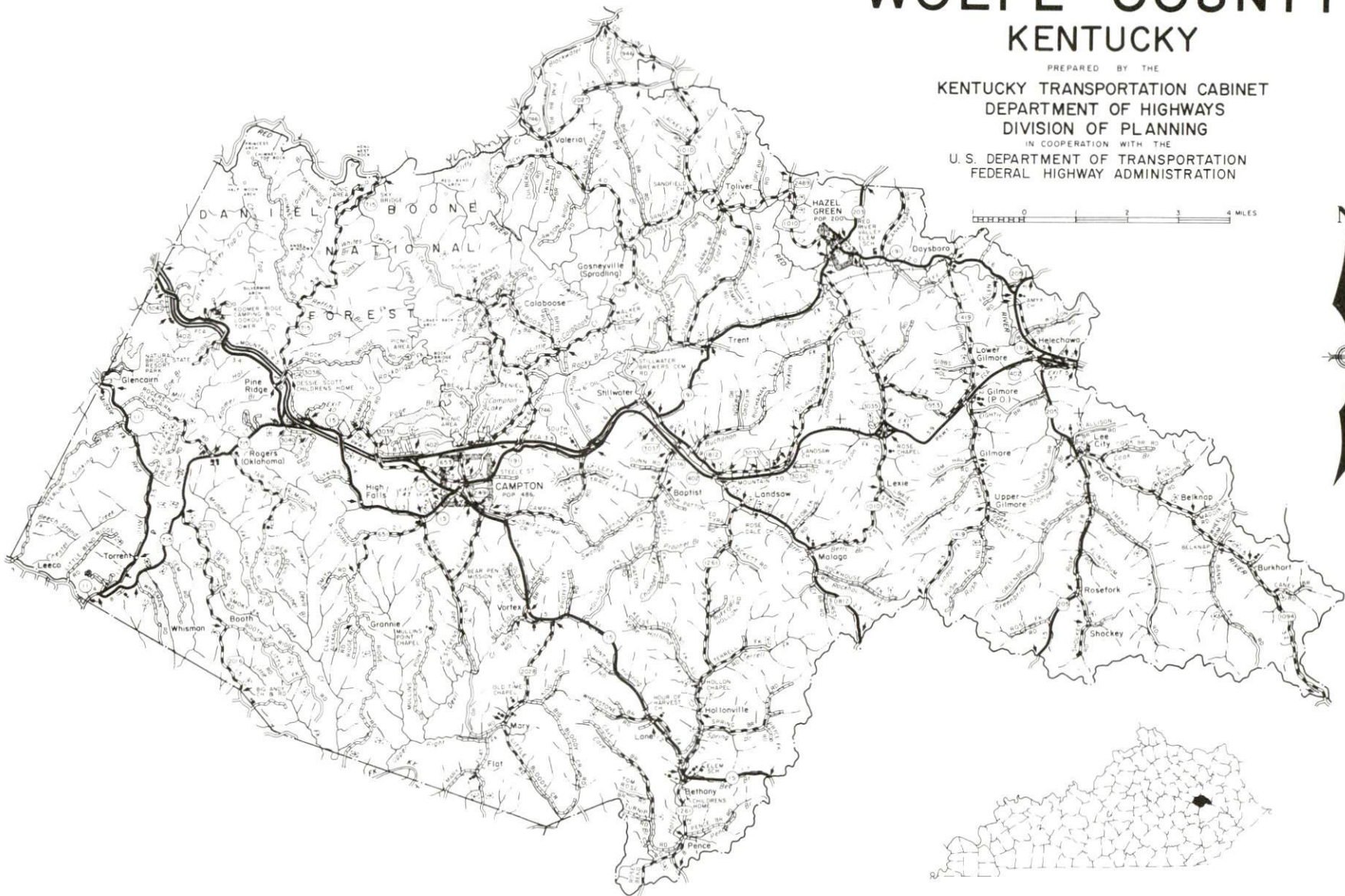
TABLE OF CONTENTS

<u>Chapter</u>	<u>Page</u>
INDUSTRIAL SITES	i
CAMPTON, KENTUCKY - A RESOURCE PROFILE	1
THE LABOR MARKET AREA	2
Population	2
Population Projections	2
Labor Force Characteristics of Residents, 1986	3
Selected Components of Nonagricultural Employment, by Place of Work, 1986	3
Per Capita Personal Income	4
Estimated Male Labor Supply	5
Estimated Female Labor Supply	5
Average Weekly Wages by Industry, by Place of Work, 1986	6
EXISTING INDUSTRY	8
Wolfe County Manufacturing Firms, Their Products and Employment	8
Labor Organizations in Manufacturing Firms	8
Selected Industrial Services	9
TRANSPORTATION	10
Rail	10
Highways	10
Truck Service	10
Air	11
Air Express Service	12
Water	12
POWER AND FUEL	13
Electricity	13
Natural Gas	13
Other Fuels	13
WATER AND SEWERAGE	15
Public Water Supply	15
Sewerage	15
CLIMATE	16

<u>Chapter</u>	<u>Page</u>
LOCAL GOVERNMENT	17
Structure	17
Planning and Zoning	17
Local Fees and Licenses	17
State and Local Property Taxes	18
Combined State and Local Rates Per \$100 Valuation, 1987	18
Safety	19
Police	19
Fire	19
Refuse Collection and Disposal	19
EDUCATION	20
Public Schools	20
Nonpublic Schools	20
Area Colleges and Universities	21
Vocational Training	22
HEALTH	24
Local Medical Personnel	24
Hospitals	24
Other Medical Facilities	24
Ambulance Service	24
OTHER LOCAL FACILITIES	25
Communications	25
Library Services	25
Religious Institutions	25
Financial Institutions	25
RECREATION	26
COMMUNITY IMPROVEMENTS	28

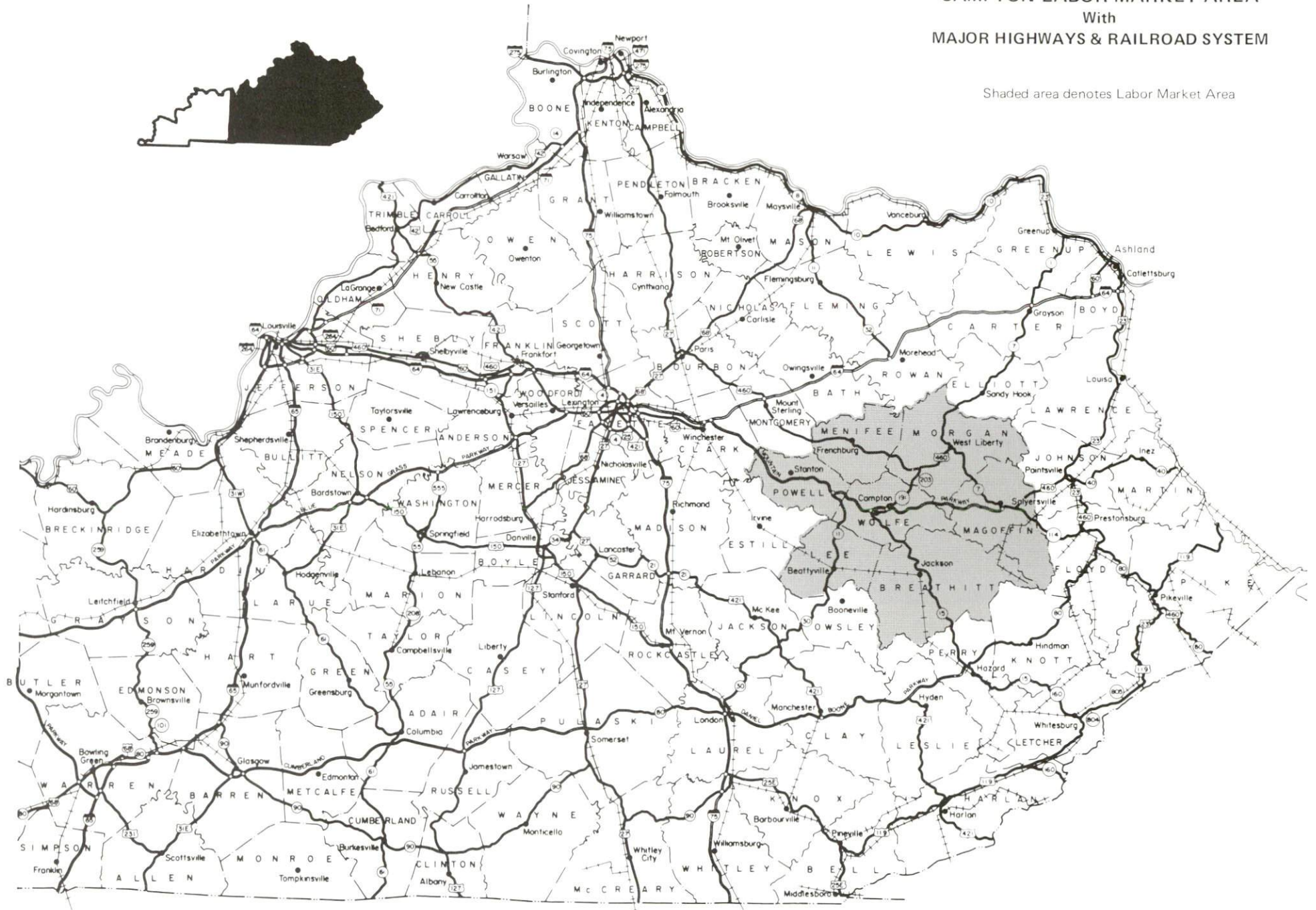
1987 EDITION
GENERAL HIGHWAY MAP
WOLFE COUNTY
KENTUCKY

PREPARED BY THE
KENTUCKY TRANSPORTATION CABINET
DEPARTMENT OF HIGHWAYS
DIVISION OF PLANNING
IN COOPERATION WITH THE
U. S. DEPARTMENT OF TRANSPORTATION
FEDERAL HIGHWAY ADMINISTRATION



CAMPTON LABOR MARKET AREA
 With
 MAJOR HIGHWAYS & RAILROAD SYSTEM

Shaded area denotes Labor Market Area



CAMPTON, KENTUCKY - A RESOURCE PROFILE

Campton, the county seat of Wolfe County, is situated in the western part of the Eastern Kentucky Coal Field. Campton is located 69 miles southeast of Lexington, Kentucky; 141 miles southeast of Louisville, Kentucky; 143 miles southeast of Cincinnati, Ohio; and 205 miles north of Knoxville, Tennessee. Campton had an estimated population of 543 in 1984.

Wolfe County covers a total land area of 223 square miles. Wolfe County is characterized by narrow, cliff-rimmed, flat-topped ridges in the northwest. Other parts of the county the slopes are not as steep, but the ridge tops are essentially the same. In 1986, Wolfe County had an estimated population of 6,900.

The Economic Framework - The total number of Wolfe County residents employed in 1986 averaged 1,940. Manufacturing firms in the county reported 310 employees; wholesale and retail trade provided 180 jobs; 60 people were employed in service occupations; state and local government accounted for 300 employees; and 70 people were employed by mining and quarrying operations.

Labor Supply - There is a current estimated labor supply of 8,320 men and 9,310 women available for industrial jobs in the labor market area. In addition, from 1987 through 1991, 3,520 young men and 3,300 young women in the area will become 18 years of age and potentially available for industrial jobs.

Transportation - Campton is served directly by Kentucky Highway 15, a "AAA"-rated trucking highway. The Mountain Parkway, a multilane highway, is located just one mile north of Campton. Interstate 64 is accessible 47 miles northwest of Campton via the Mountain Parkway. Three common carriers are authorized to serve Campton. CSX Transportation provides rail service at Jackson, 20 miles southeast of Campton. The nearest commercial airport, Bluegrass Airport near Lexington, is located 73 miles northwest of Campton. The Stanton Airport, 24 miles northwest of Campton, maintains a 3,000-foot paved runway designed to accommodate small aircraft.

Power and Fuel - Electric power is provided to Campton and Wolfe County by the Licking Valley Rural Electric Cooperative Corporation, which is supplied by the East Kentucky Power Cooperative Corporation. Natural gas service is not available in Campton at the present time, however, Capital Oil and Gas Company provides natural gas service to a portion of eastern Wolfe County. Three distributors of propane and five distributors of distillate fuel oil are located within 35 miles of Campton.

Education - Primary and secondary education is provided to Campton and Wolfe County by the Wolfe County School System. In addition, one private school provides elementary education to the community. Eight institutions of higher learning are located within 70 miles of Campton. Three vocational education facilities are available within 55 miles of Campton.

LABOR MARKET STATISTICS

The Campton Labor Market Area includes Wolfe County and the adjoining Kentucky counties of Breathitt, Lee, Magoffin, Menifee, Morgan and Powell.

POPULATION

Area	1986*	1980	1970	Percent Nonwhite
				1980
Campton	543	486	419	0.4
Labor Market Area	75,300	73,292	58,693	-
Wolfe County	6,900	6,698	5,669	0.2
Breathitt County	16,700	17,004	14,221	0.5
Lee County	8,000	7,754	6,587	0.5
Magoffin County	14,300	13,515	10,443	0.2
Menifee County	5,300	5,117	4,050	1.3
Morgan County	12,000	12,103	10,019	0.4
Powell County	12,100	11,101	7,704	1.2

* Population estimates. City estimates are for 1984.

Note: The 1980 city counts of population by race are provisional.

Sources: U.S. Department of Commerce, Bureau of the Census, 1980 Census of Population and Housing, March 1981; 1980 Census of Population, Number of Inhabitants. University of Louisville, Urban Studies Center, Population Unit, October 1985; University of Louisville, Urban Studies Center, State Data Center, June 1987 Newsletter, Vol. 5 No. 4.

POPULATION PROJECTIONS

Area	1990	1995	2000	2010
Labor Market Area	78,644	82,030	85,003	89,800
Wolfe County	7,338	7,549	7,720	8,027
Breathitt County	17,074	17,528	17,993	18,728
Lee County	8,291	8,694	8,967	9,369
Magoffin County	15,359	16,453	17,442	19,108
Menifee County	5,539	5,750	5,921	6,161
Morgan County	12,597	13,023	13,409	14,025
Powell County	12,446	13,033	13,551	14,382

Source: University of Louisville, Urban Studies Center, Population Research Unit, How Many Kentuckians: Population Forecasts, 1980-2020, the 1986 Edition, Spring 1986.

LABOR FORCE CHARACTERISTICS OF RESIDENTS, 1986

	Wolfe County	Labor Market Area
Civilian Labor Force	2,347	26,179
Employment	1,942	21,558
Unemployment	405	4,621
Rate of Unemployment (%)	17.3	17.7

Source: Kentucky Cabinet for Human Resources, Kentucky Labor Force Estimates, Annual Averages, 1986.

SELECTED COMPONENTS OF NONAGRICULTURAL EMPLOYMENT
BY PLACE OF WORK, 1986

	Wolfe County	Labor Market Area
All Industries (total)	998	11,204
Manufacturing	307	1,491
Wholesale & Retail Trade	184	2,365
Services	56	1,347
State/Local Government	301	3,001
Contract Construction	*	168
Mining & Quarrying	71	930

* Not disclosed.

Note: Excludes domestic workers, railway workers, certain nonprofit corporations, majority of federal government workers, and self-employed workers.
Source: Kentucky Cabinet for Human Resources, Average Monthly Workers Covered by Kentucky Unemployment Insurance Law, 1986.

PER CAPITA PERSONAL INCOME

<u>Area</u>	<u>1980</u>	<u>1984</u>	<u>Percent Change</u>
Wolfe County	\$ 4,225	\$ 5,855	38.6
Labor Market Area Range	\$4,100 - 5,813	\$5,255 - 7,371	-
Kentucky	7,644	10,232	33.9
U.S.	9,494	12,772	34.5

Sources: U.S. Department of Commerce, Bureau of Economic Analysis. Kentucky Economic Information System, June 1986.

ESTIMATED MALE LABOR SUPPLY
CAMPTON LABOR MARKET AREA

Area	Current				Future
	Total Male	Unemployed	Under-employed	Not in Labor Force	Becoming 18 years of age 1987 thru 1991
Labor Market Area*	8,316	3,116	1,818	3,382	3,523
Wolfe	823	253	92	478	289
Breathitt	1,914	439	305	1,170	777
Lee	887	400	202	285	363
Magoffin	1,756	654	306	796	711
Menifee	460	224	236	0	238
Morgan	1,659	624	382	653	598
Powell	817	522	295	0	547

ESTIMATED FEMALE LABOR SUPPLY
CAMPTON LABOR MARKET AREA

Area	Current				Future
	Total Female	Unemployed	Under-employed	Not in Labor Force	Becoming 18 years of age 1987 thru 1991
Labor Market Area*	9,306	1,505	1,317	6,484	3,304
Wolfe	808	152	89	567	261
Breathitt	2,205	209	237	1,759	796
Lee	977	144	170	663	306
Magoffin	2,073	247	213	1,613	664
Menifee	546	195	105	246	233
Morgan	1,759	192	201	1,366	529
Powell	938	366	302	270	515

* Additional workers may be drawn from other nearby counties.

Note: Unemployed - persons unemployed and actively seeking work; Underemployed - persons employed but working only 14 to 26 weeks per year; Not in Labor Force - represents the number of persons who would enter the labor force if suitable employment were available (based on the assumption that persons in Kentucky would like to participate in the labor force in the same proportion that they do nationally).

Sources: Kentucky Cabinet for Human Resources, Kentucky Labor Supply Estimates by County, 1986. Kentucky Department of Economic Development, Future Labor Supply Becoming 18 Years of Age, 1987 thru 1991.

AVERAGE WEEKLY WAGES BY INDUSTRY
BY PLACE OF WORK, 1986

	<u>Wolfe County</u>	<u>Breathitt County</u>	<u>Lee County</u>	<u>Magoffin County</u>
All Industries	\$248.69	\$406.81	\$259.05	\$317.01
Mining & Quarrying	380.92	*	420.52	516.40
Contract Construction	*	185.37	171.61	215.17
Manufacturing	*	*	*	*
Transportation, Communications & Public Utilities	252.54	336.44	387.91	308.18
Wholesale & Retail Trade	179.53	189.14	202.77	160.76
Finance, Insurance & Real Estate	*	347.20	396.83	383.32
Services	117.49	203.90	187.96	235.04
State/Local Government	255.83	305.92	258.91	277.66
Other	0	180.83	*	0
	<u>Menifee County</u>	<u>Morgan County</u>	<u>Powell County</u>	
All Industries	\$222.64	\$264.48	\$231.35	
Mining & Quarrying	*	433.46	350.62	
Contract Construction	117.38	255.26	263.61	
Manufacturing	140.44	180.57	224.50	
Transportation, Communications & Public Utilities	153.33	333.43	366.82	
Wholesale & Retail Trade	195.57	189.58	159.96	
Finance, Insurance & Real Estate	217.58	305.35	300.94	
Services	143.32	241.99	171.01	
State/Local Government	273.78	296.25	258.82	
Other	*	102.65	270.21	

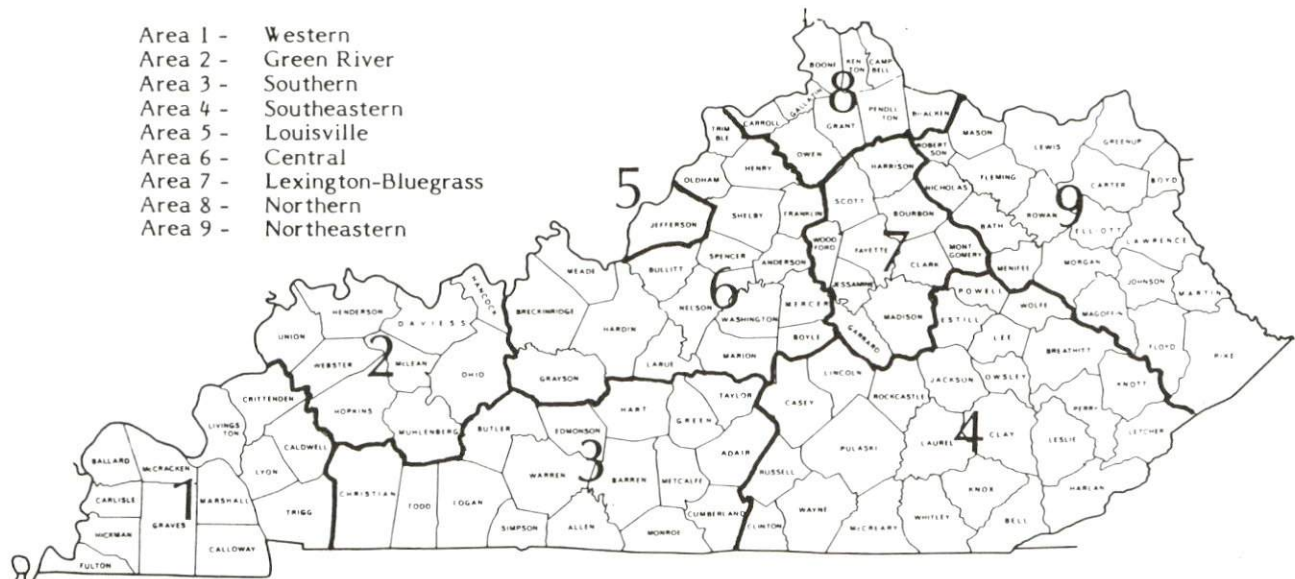
* Not disclosed.

Note: The average weekly wage for each category includes the salaries and wages of all persons working for that type business. For example, the manufacturing category includes both production workers and administrative personnel. Excludes domestic workers, railway workers, certain nonprofit corporations, majority of federal government workers, and self-employed workers.

Source: Kentucky Cabinet for Human Resources, Average Weekly Wages of Workers Covered by Kentucky Unemployment Insurance Law, 1986.

Occupational wage rates for specific industries are usually not available to most government agencies, and wage data furnished to state employment agencies by individual industrial employers are protected from disclosure by federal law. The most reliable up-to-date wage information can be obtained by direct contact with local employers.

Associated Industries of Kentucky, a voluntary organization of Kentucky businesses, regularly collects occupational wage rates and fringe benefits data from participating member firms. Data are compiled for over 127 clearly defined office, production, and service occupations. Tabulations are published for nine geographical areas of Kentucky, as shown on the map below. It should be noted that the data may be weighted by the preponderance of firms in the larger cities and may be somewhat higher than the rates paid in the smaller communities. Data from these tabulations are available, upon request, from the Kentucky Department of Economic Development, Frankfort, Kentucky 40601.



Associated Industries of Kentucky Area Wage Surveys

EXISTING INDUSTRY

WOLFE COUNTY MANUFACTURING FIRMS, THEIR PRODUCTS AND EMPLOYMENT

<u>Firm</u> (Establishment date)	<u>Product</u>	<u>Average Employment</u>		
		<u>Total</u>	<u>Male</u>	<u>Female</u>
Campton				
Campton Electronic Manufacturing, Inc. (1969)	Printed circuit board assembly and testing, computer wire preparation and cabling	280	60	220
Pine Ridge				
Spencer Saw Mill (1966)	Rough lumber, crossties	11	11	0

Sources: Kentucky Department of Economic Development, 1987 Kentucky Directory of Manufacturers; Division of Research and Planning.

LABOR ORGANIZATIONS IN MANUFACTURING FIRMS

There are no unions representing manufacturing firms in Wolfe County at the present time.

SELECTED INDUSTRIAL SERVICES

<u>Types of Service</u>	<u>Location</u>	<u>Mileage from Campton</u>
Custom Data Processing	Prestonsburg	51
Custom Plastics Producers	Lexington	69
Electric Motor Repair	Morehead	58
Grinding, Precision & Tool	Winchester	51
Heat Treating Facilities	Richmond	65
Industrial Equipment & Supplies	Richmond	65
Industrial Gases	Prestonsburg	51
Industrial Waste Removal	Richmond	65
Machine Shops, Tool & Die	Mt. Sterling	45
Metal Castings	Cynthiana	79
Metal Finishers	Richmond	65
Metal Service Centers	Richmond	65
Millwrights	Stanton	22
Public Warehouse Facilities	Paris	64

Sources: Kentucky Department of Economic Development, Kentucky Directory of Selected Industrial Services, 1987; Division of Research and Planning.

TRANSPORTATION

Rail

Campton is not served directly by rail. However, CSX Transportation provides main line rail service at Jackson, 20 miles southeast of Campton.

For details on routing, schedules, rates, and services contact:

Manager
Industrial Development
CSX Transportation
908 West Broadway
P. O. Box 2157
Louisville, Kentucky 40201
(502) 587-7746

Highways

Campton is served directly by the Mountain Parkway, a multilane highway, and by Kentucky 15, a "AAA"-rated (80,000-pound gross load limit) trucking highway. Interstate 64 is located 47 miles northwest of Campton via the Mountain Parkway. The Daniel Boone Parkway, a multilane toll road, is located 48 miles southeast of Campton.

Truck Service*

Hazard Express, Inc.
Manning Motor Express, Inc.

Overnite Transportation Company

* Each trucking firm provides both interstate and intrastate service.

Source: American Motor Carrier Directory, Fall 1987.

HIGHWAY MILES AND TRUCK TRANSIT TIME IN DAYS FROM
CAMPTON, KENTUCKY, TO SELECTED MARKET CENTERS

City	Highway Miles	Delivery		City	Highway Miles	Delivery	
		Time TL				Time TL	
Atlanta, GA	398	1-2		Los Angeles, CA	2,249	5-7	
Baltimore MD	542	2		Louisville, KY	141	1	
Birmingham, AL	467	2-3		Nashville, TN	276	1	
Chicago, IL	418	2		New Orleans, LA	796	3	
Cincinnati, OH	143	1		New York, NY	714	2-3	
Cleveland, OH	387	1-2		Pittsburgh, PA	374	2-3	
Detroit, MI	402	2		St. Louis, MO	401	1-2	
Knoxville, TN	205	1					

Note: Mileage computations are via the best interstate or primary highways, not necessarily the most direct route of travel.

Sources: Rand McNally Deluxe Motor Carriers' Road Atlas, 1987. Official Kentucky Mileage Map, 1980. Delivery time - Hazard Express, Inc., P. O. Box 1599, Hazard, Kentucky.

Air

Local

Location: Stanton Airport
 24 miles northwest of Campton
 Runways: 1 paved
 Length: 3,000 feet
 Traffic
 Control: Wind sock; unicom
 Lighting: Runway lights, sunset to sunrise
 Services: 100LL fuel; tie downs

(Continued)

Nearest Scheduled Commercial Airline Service

Location: Bluegrass Airport
4 miles west of Lexington, Kentucky;
73 miles northwest of Campton

Runways: 2 paved
Length: 7,000 feet; 3,500 feet

Traffic Control: Control tower

Lighting: Approach lighting system, beacon, runways and
obstructions lighted, VASI

Services: Delta, Piedmont, USAir, Allegheny Commuter, TWA,
Jetstream United Express, Eastern Metro, Comair,
American Eagle; fuel - 100LL and jet-A; hangars,
tie-downs; major A & P repairs; major Avionics
repairs; APU, charter, flight instruction, oxygen,
plane rentals, survival equipment; taxi,
limousine, car rentals, courtesy car, weather
information; restaurant, snack bar

Air Freight Service: Air freight terminal

Air Express Service

Several major companies offer air express services in Kentucky. These companies provide a quick means of shipping small to medium-sized packages expeditiously.

Water

Access to the inland waterways is available via the Big Sandy River, 79 miles northeast of Campton at Louisa, and the Kentucky River at Frankfort, 89 miles northwest of Campton. A 6-foot navigation channel is maintained on the Big Sandy River for a distance of approximately 10 miles, then it becomes a 9-foot channel and continues to its confluence with the Ohio River. A 6-foot navigation channel is maintained on the Kentucky River from Frankfort to its confluence with the Ohio River at Carrollton. A nine-foot navigation channel is maintained the entire length of the Ohio River.

POWER AND FUEL

Electricity

Company serving Campton and Wolfe County - Licking Valley Rural Electric
Cooperative Corporation

Source of power - East Kentucky Power Cooperative Corporation

For industrial rates contact:

Industrial Development Division
East Kentucky Power Cooperative
P. O. Box 707
Winchester, Kentucky 40391
(606) 744-4812

and/or

Licking Valley RECC
P. O. Drawer 605
West Liberty, Kentucky 41472

Natural Gas

Natural gas service is not available in Campton at the present time,
however Capital Oil and Gas Company provides natural gas service to a portion
of eastern Wolfe County.

Other Fuels (Within 35 miles)

Propane

Ferrell Gas
Main Street
Beattyville, Kentucky 41311

Finch Gas and Appliances
U.S. 460 West
West Liberty, Kentucky 41472

Empire Gas, Inc., of Jackson
Box 10, North Jackson Plaza
Jackson, Kentucky 41339

(Continued)

Fuel oils

Distillate fuel oil -

Beattyville Gas and Oil, Inc.
Highway 52
Beattyville, Kentucky 41311

Rogers Oil Company
Highway 11, Box W
Beattyville, Kentucky 41311

Breathitt County Oil Company
Highway 15
Jackson, Kentucky 41339

Sun Oil Company
Route 1
Campton, Kentucky 41301

Idea Gas and Oil Company, Inc.
P. O. Box 784
Armory Drive
Jackson, Kentucky 41339

Residual fuel oil - Arrangements must be made with the refinery.

Low sulphur content coal - Available in Kentucky.

WATER AND SEWERAGE

Public Water Supply

Company serving Campton - City of Campton Waterworks*
P. O. Box 35
Campton, Kentucky 41301
(606) 668-3574

Source - Wolfe Lake
Treatment plant capacity - 415,000 gallons per day
Average daily consumption - 125,000 gallons
Peak daily consumption - 190,000 gallons
Treatment processes - Rapid mix, flocculation, sedimentation, fluoridation,
chlorination, filtration
Storage capacity - 415,000 gallons
Size lines - 4, 6 and 8 inches
Water pressure - 40 to 70 psi

MONTHLY WATER RATES

First	2,000 gallons	\$8.00 (Minimum)
Next	3,000 gallons	2.60 per M gallons
Next	5,000 gallons	2.50 per M gallons
Next	10,000 gallons	2.30 per M gallons
All over	20,000 gallons	2.00 per M gallons

Tap-on charge: \$225

Sewerage

Company serving Campton - City of Campton Sewerage Company
P. O. Box 35
Campton, Kentucky 41301
(606) 668-3574

Design capacity - 100,000 gallons per day
Average daily flow - 45,000 gallons
Type of treatment - Secondary
Treatment processes - Aeration
Treated effluent discharged into - Swift Creek
Size of sanitary mains - 8 inches
Size of storm mains - 12 inches
Monthly rates - 100% of monthly water bill for customers using the city
of Campton's water; \$12.00 per month for all other sewer customers
Tap-on charge: \$75

* The city of Campton Waterworks is currently in the planning stages for the construction of a 14-mile water line extension to Hazel Green. The \$780,000 project is scheduled for completion by Fall 1988. In addition, a 3.5-mile line will be extended to Slade in Powell County.

CLIMATE

Wolfe County

Temperature

Normal (30-year record)	54.90 degrees
Average annual 1986	54.40 degrees
Record highest, August 1983 (42-year record)	103.00 degrees
Record lowest, January 1963 (42-year record)	-21.00 degrees
Normal heating degree days (30-year record) (Heating degree day totals are the sums of negative departures of average daily temperatures from 65 degrees F.)	4,814

Precipitation

Normal (30-year record)	45.68 inches
Mean annual snowfall (30-year record)	16.40 inches
Total precipitation 1986	34.86 inches
Mean number days precipitation (.01 inch or more) (42-year record)	130.30
Mean number days thunderstorms (42-year record)	45.60

Prevailing winds (through 1963)

South

Relative Humidity

1 a.m.	77 percent (22-year record)
7 a.m.	82 percent (23-year record)
1 p.m.	60 percent (23-year record)
7 p.m.	64 percent (23-year record)

Source: U.S. Department of Commerce, Environmental Science Services Administration, Climatological Data, 1986. Station of record: Lexington, Kentucky.

LOCAL GOVERNMENT

Structure

The city of Campton is served by a mayor and four commissioners. The mayor is elected to a four-year term and the commissioners each hold an office for two years. Wolfe County is served by a county judge/executive and three magistrates. Each of the county officers is elected to a four-year term.

Planning and Zoning

There is no planning and zoning commission in Wolfe County at the present time:

Mandatory state codes enforced - Kentucky Plumbing code, National Electric Code, Kentucky Boiler Regulations and Standards, Kentucky Building Code (modeled after BOCA code)

Local Fees and Licenses

The city of Campton requires businesses to pay an annual license fee of \$50. Unloading license fees are \$25 annually.

State and Local Property Taxes

All property in Kentucky, except items exempted by the state constitution, is taxed by the state. Property which also may be taxed by local jurisdictions includes land and buildings, finished goods inventories, automobiles, trucks, office furniture and office equipment. Local taxing jurisdictions in Kentucky include counties, cities, and school districts.

All property in Kentucky is assessed at 100 percent of fair cash value.

COMBINED STATE AND LOCAL RATES PER \$100 VALUATION, 1987

	Campton	Unincorporated Wolfe County
Land and Buildings	\$0.9040	\$0.7700
Manufacturing		
Machinery	0.150	0.150
Pollution Control		
Equipment	0.150	0.150
Inventories		
Raw materials	0.001	0.001
Goods in Process	0.001	0.001
Finished Goods	0.7133	0.5793
Automobiles & Trucks	0.7443	0.7443
Other Tangible		
Personal Property	1.1623	1.0283
Intangibles (Accounts receivable*, money in hand, stock, notes, bonds)	0.250	0.250
Goods Stored in Public Warehouses in Transit Status	0.001	0.001
Private Leaseholds in Industrial Revenue Bond Financed Facilities	0.015	0.015

* Accounts receivable are taxed at 85 percent of face value, for an effective rate of \$0.2125 per \$100 valuation.

Safety

Police	Campton	Wolfe County
Total staff	1	2 full-time 4 part-time
Radio-patrol cars	1	3

Fire*

Fire protection service is provided to Wolfe County by volunteer fire departments in Campton, Bethany, and Hazel Green. Property located within five road miles of a Campton fire station and within 1,000 feet of a fire hydrant, is rated as class 7. Property located within five road miles of a Campton fire station where the fire hydrant is beyond 1,000 feet, is rated as class 9. All other unincorporated areas of Wolfe County are rated as class 10.

Refuse Collection and Disposal

Private companies provide refuse collection and disposal service to Campton and Wolfe County.

* Includes copyrighted material of ISO Commercial Risk Services, Inc., with its permission.

EDUCATION

Public Schools

	Wolfe County*
Total Enrollment (Fall, 1987)	1,427
Kindergarten	109
Elementary	948
High School	370
 Pupil-Teacher Ratio (1985-86)	 24-1
 Percent High School Graduates to College (1985-86)	 24.6
 Expenditures Per Pupil (1985-86)	 \$2,018.63

Nonpublic Schools

<u>School</u>	<u>Enrollment</u>	<u>Grades</u>
Bethany Elementary	68	K-8

* Planned projects for the Wolfe County School System include: the construction of a middle school beginning with phase one (15 classrooms); building additional classrooms at each of the four existing schools; construction of a new bus garage; purchasing 15 additional computers to be utilized in the computer and science program; and an upgrade in the high school mathematics and science department and language department including the addition of advanced level courses. In addition, two programs will be instituted utilizing computers to improve both math and reading skills at the elementary level.

Area Colleges and Universities

<u>Name</u>	<u>Location (Miles distant)</u>	<u>Enrollment (Fall, 1986)</u>	<u>Highest Degree Conferred</u>
Lees College Prestonsburg Community College	Jackson (20)	383	Associate
Hazard Community College	Prestonsburg (51)	1,505	Associate
Morehead State University	Hazard (52)	776	Associate
Eastern Kentucky University	Morehead (60)	5,894	Masters, Specialist*
Lexington Community College	Richmond (65)	12,737	Masters, Specialist*
Transylvania University	Lexington (69)	2,587	Associate
University of Kentucky	Lexington (69)	970	Baccalaureate**
	Lexington (69)	20,788	Doctorate, M.D., D.M.D., J.D.

* Joint doctoral degree programs are offered in cooperation with the University of Kentucky, Lexington. The degrees are issued by the University of Kentucky.

** Courses in a masters degree program are taught on the Transylvania campus by faculty members of Xavier University of Cincinnati. The degree is issued by Xavier University.

Vocational Training

The Bluegrass State Skills Corporation, an independent public corporation created and funded by the Kentucky General Assembly, provides programs of skills training to meet the needs of business and industry from entry level to advanced training, and from upgrading present employees to retraining experienced workers.

The Bluegrass State Skills Corporation is the primary source for skills training assistance for a new or existing company. The Corporation works in partnership with other employment and job training resources and programs, as well as Kentucky's economic development activities, to package a program customized to meet the specific needs of a company.

Vocational training is available at both the state vocational-technical schools and the area vocational education centers. The state vocational-technical schools are post-secondary institutions. The area vocational education centers are designed to supplement the curriculum of high school students. Both the state vocational-technical schools and the area vocational education centers offer evening courses to enable working adults to upgrade current job skills.

Arrangements can be made to provide training in the specific production skills required by an industrial plant. Instruction may be conducted either in the vocational school or in the industrial plant, depending upon the desired arrangement and the availability of special equipment.

Nearest State Schools

Mayo State Vocational-Technical School
Paintsville, Kentucky, 48 miles distant

Business & Office	Drafting
Accounting/Management	Electricity
Clerical	Electronics
Data Processing	Graphic Arts
Secretarial	Machine Shop
Consumer & Home Economics	Mine Equipment Operator
Consumer & Family Life	Mine Maintenance Technology
Skills	Welding
Health & Personal Services	Learning Resource Center
Occupations	Public Service Occupations
Cosmetology	Business/Industry Security
Practical Nursing	Training
Industrial Education	CPR Training
Air Conditioning	Electrical Safety Training
Auto Body Repair	Emergency Medical Care
Auto Mechanics	Fire Service Training
Carpentry	First Aid & Safety
Civil & Highway Technology	Rescue & Emergency Services
Diesel Mechanics	Training

(Continued)

Hazard State Vocational-Technical School
Hazard, Kentucky, 52 miles distant

Business & Office	Heavy Equipment Operator
Clerical	Heavy Equipment Repair
Secretarial	Machine Shop
Health & Personal Services	Masonry
Occupations	Mine Equipment Operator
Cosmetology	Mine Maintenance Technology
Practical Nursing	Welding
Industrial Education	Learning Resource Center
Air Conditioning	Public Service Occupations
Auto Body Repair	Business/Industry Security
Auto Mechanics	Training
Carpentry	CPR Training
Civil & Highway Technology	Electrical Safety Training
Coal Mining Operations	Emergency Medical Care
Diesel Mechanics	Fire Service Training
Drafting (with CAD/CAM)	First Aid & Safety
Electricity	Rescue & Emergency Services
Electronics	Training

Nearest Area Education Center

Breathitt County Area Vocational Education Center
Jackson, Kentucky, 20 miles distant

Business & Office	Auto Body Repair
Clerical	Carpentry
Secretarial	Diesel Mechanics
Industrial Education	Electricity
Appliance Repair	Machine Shop

HEALTH

Local Medical Personnel

Physicians - 2
Dentists - 2

Hospitals

<u>General Hospital</u>	<u>Location</u>	<u>Beds</u>
Morgan County Appalachian Regional Hospital	West Liberty, 25 miles northeast	30 acute care 15 skilled nursing

Medical staff - 8 physicians, 2 licensed practical nurses, and 22
registered nurses

Other Medical Facilities

Campton Medical Clinic
Wolfe County Health Center (Kentucky River District)

Ambulance Service

Name - Wolfe County Ambulance Service
Staff - 2 emergency medical technicians

OTHER LOCAL FACILITIES

Communications

Telephone -	Mountain Rural Telephone Cooperative Corporation	
Telegraph -	Western Union	
	Toll-Free number, 1-800-325-6000	
Newspapers -	Wolfe County News	
Weekly and circulation -	2,200	
Television -		
Airwave reception from -	Lexington and Hazard, Kentucky; Huntington, West Virginia	
Cable service -	Frederick and Brown Cable Company	
Educational Television -	The Kentucky Educational Television (K.E.T.) network is available statewide	

Library Services

Public library - Wolfe County Public Library
 Size collection - 21,170 volumes
 Circulation, 1986-87 - 83,676

Religious Institutions

Denominations -	Baptist Church of Christ	Church of God Methodist
Nearest Synagogues -	Lexington, 69 miles northwest	
Congregations -	Adath Israel (reform) Ohavey Zion (traditional)	

Financial Institutions

<u>Banks</u>	<u>Assets</u>	<u>Deposits</u>	<u>Statement Date</u>
Farmers and Traders Bank	\$14,298,785.51	\$3,965,939.06	6/30/87

RECREATION

Local

The Campton Community Park offers a baseball field, basketball court, tennis court, picnic tables, shelter houses, and a playground. Other recreational facilities in Campton include two baseball fields and four gymnasiums.

A homecoming festival is held annually each Labor Day weekend in Campton. The festival includes a parade, booths, crafts, and live music.

Several tourist attractions are located near Campton. Red River Gorge, part of the Daniel Boone National Forest and considered one of Kentucky's most prominent features, is a boulder-strewn area of rugged forests, streams, cliffs, overlooks, arches, rare plants and animal life. Picnic and campsites are available in the Koomer Ridge Recreation area. Pioneer Weapons Area features a 7,480-acre preserve where hunters are limited to primitive weapons use only.

Wolfe County is located within the Daniel Boone National Forest, which covers 640,000 acres of timberland in eastern Kentucky. It encompasses much of Kentucky's great beauty and provides a vacation paradise. There are scenic hiking trails, rivers and streams stocked with a variety of fish, hunting preserves, camping sites, and numerous other natural and historical attractions.

Area (Within 70 miles)

Natural Bridge State Resort Park near Slade, 12 miles northwest of Campton, is located in the Daniel Boone National Forest where cliffs and stone arches fill the landscape. The rugged awesomeness of the great Natural Bridge is the main attraction. The park offers a 35-room resort lodge with a dining room, convention center, gift shop, ten rustic cottages, and 95 camping sites. Other facilities include a lake, a swimming pool, picnic shelters and playgrounds, hiking trails, and a riding stable.

Cave Run Lake, constructed by the U.S. Army Corps of Engineers, is located 48 miles north of Campton within the 640,000-acre Daniel Boone National Forest. The lake area offers everything for the camper, the boatsman, the hunter, the fisherman, and "the lover of leisure."

The spirit of Daniel Boone and his pioneers is reborn at Fort Boonesborough State Park in Boonesboro, 52 miles northwest of Campton. In the re-created fort, pioneer crafts of the eighteenth century are demonstrated by using functioning antiques from the frontier era. Cabins are furnished as they would have been in the days of Boone and documentary films are presented which depict the struggle of the first Kentuckians to make the Kentucky wilderness a home. A gift shop within the fort offers for sale all the handcrafted items made at the fort. Other recreational facilities and activities of the park include the finest sand beach on the Kentucky River with a modern bathhouse and a modern camping area with 187 sites, picnic area, playground and miniature golf.

Buckhorn Lake State Resort Park, 58 miles south of Campton at Buckhorn, is a full-facility resort park with a 36-room lodge. The lodge itself offers a dining room with a lake view, a gift shop, a pool, meeting rooms, and a recreation room. Other park facilities and activities include a beach, a bathhouse, a picnic shelter, a playground, mini-golf, tennis, hiking, a dock with open and covered slips, boat rentals, a 40-foot levee plus a fishing pier, bicycle rentals, and planned recreation.

Grayson Lake State Park is located 60 miles northeast of Campton near Grayson. Facilities available include 71 campsites, a beach, and a picnic area. Good fishing and organized recreational programs can be found during the summer. The park is located in the 7,350-acre Grayson Lake Wildlife Area.

Jenny Wiley State Resort Park, 60 miles east of Campton near Prestonsburg, takes full advantage of its picturesque highland setting. The 1,700-acre park offers facilities and activities such as a 49-room lodge, a dining room, a gift shop, cottages, a lodge pool, sky lift, recreation rooms, campsites, picnic areas, planned recreation, playground, golf, hiking, horseback riding, miniature golf, shuffleboard, fishing, and fishing boat and pedal boat rentals. A summer music theatre presents Broadway musicals in a 90-seat amphitheater.

White Hall State Shrine, 62 miles west of Campton near Richmond, one of the grand estate houses of post-Civil War Kentucky, is the Italianate mansion of Cassius Marcellus Clay, the early abolitionist and politician. Kentucky handcrafts are sold in the White Hall gift shop, only a short walk from the mansion.

Lexington, 69 miles northwest of Campton, offers a variety of cultural, sporting, and recreational activities. Thoroughbred and harness racing is presented at Keeneland Race Course and the Red Mile Harness Track during several meets each year. The University of Kentucky and Transylvania University offer a number of sporting events. The University of Kentucky basketball games are held at Rupp Arena, the world's largest basketball arena. Other attractions include Lexington Philharmonic concerts, Lexington Children's Theatre, and plays performed by Broadway touring companies, all held in the recently renovated Opera House. In addition, located in the heart of downtown Lexington, the historical Victorian Square and Festival Market Place offer a taste of nostalgia with their many quaint shops and restaurants.

The Kentucky Horse Park, a park dedicated to horses and to man's love for horses, is located 70 miles northwest of Campton at Lexington. The park, which contains more than 1,000 acres of Kentucky Bluegrass, features the International Museum of the Horse; the Man O'War Memorial; the wide screen film "Thou Shalt Fly Without Wings"; an antique carriage display; horseback and pony rides; walking farm tours; horse-drawn tours; a restaurant; a gift shop; and a campground area, which offers swimming, tennis, and planned activities. Numerous special events are held year-round and include various horse shows, steeplechasing, dressage, polo games, and rodeos.

Waveland State Shrine, 70 miles northwest of Campton near Lexington, features an 1847 Greek Revival mansion depicting Kentucky lifestyles from the days of early settlers to the antebellum era of gentility and elegance as well as the Civil War and postwar periods. The shrine also includes the Kentucky Life Museum and a plantation village on ten acres with many shops and displays.

COMMUNITY IMPROVEMENTS

Recent

Wolfe County recently completed a solid waste transfer station. The facility is located adjacent to the Campton industrial park.

Under Way

In joint cooperation with Wolfe, Magoffin, and Morgan Counties, the development of a tri-county industrial park is under way. The 90-acre site is located in the extreme eastern portion of Wolfe County and in far western Morgan County, near the Mountain Parkway.

A 44-acre industrial site is being developed by the Wolfe County Industrial Development Committee and the Wolfe County Fiscal Court. Approximately 7 to 8 acres have already been graded and leveled. Utility services are available at the site.

Planned

The City of Campton Waterworks is currently in the planning stages for the construction of a 14-mile water line extension to Hazel Green. The \$780,000 project is scheduled for completion by Fall 1988. In addition, a 3.5-mile line will be extended to Slade in Powell County.

Planned projects for the Wolfe County School System include: the construction of a middle school beginning with phase one (15 classrooms); building additional classrooms at each of the four existing schools; construction of a new bus garage; purchasing 15 additional computers to be utilized in the computer and science program; and an upgrade in the high school mathematics and science department and language department including the addition of advanced level courses. In addition, two programs will be instituted utilizing computers to improve both math and reading skills at the elementary level.