

1974

# Industrial Resources: Allen County, Kentucky

Kentucky Library Research Collections  
Western Kentucky University, [spcol@wku.edu](mailto:spcol@wku.edu)

Follow this and additional works at: [https://digitalcommons.wku.edu/allen\\_cty](https://digitalcommons.wku.edu/allen_cty)

 Part of the [Business Administration, Management, and Operations Commons](#), [Growth and Development Commons](#), and the [Infrastructure Commons](#)

---

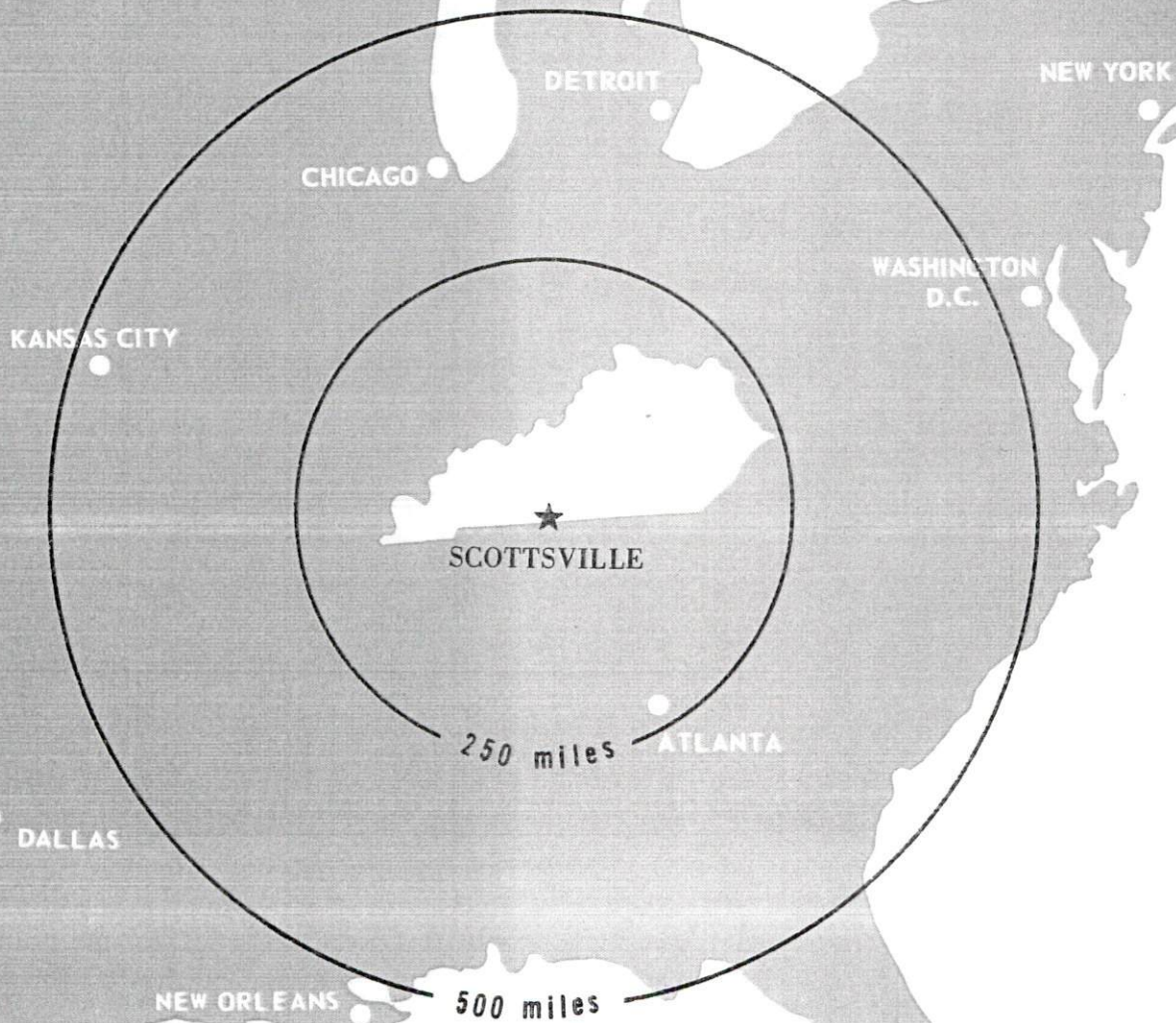
## Recommended Citation

Kentucky Library Research Collections, "Industrial Resources: Allen County, Kentucky" (1974). *Allen County*. Paper 11.  
[https://digitalcommons.wku.edu/allen\\_cty/11](https://digitalcommons.wku.edu/allen_cty/11)

This Report is brought to you for free and open access by TopSCHOLAR®. It has been accepted for inclusion in Allen County by an authorized administrator of TopSCHOLAR®. For more information, please contact [topscholar@wku.edu](mailto:topscholar@wku.edu).

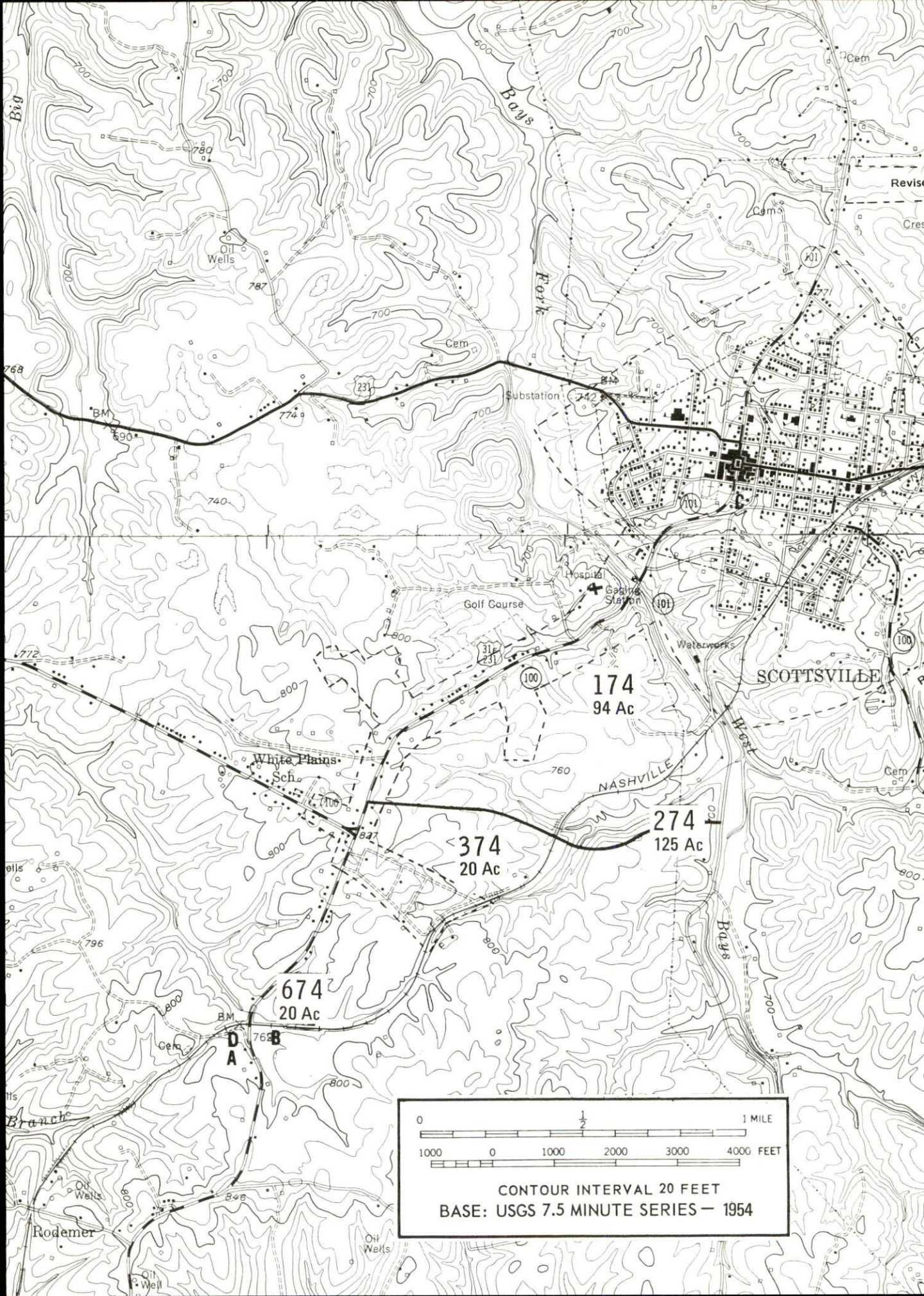
# INDUSTRIAL RESOURCES

## **SCOTTSVILLE KENTUCKY**



ALLEN COUNTY, KENTUCKY





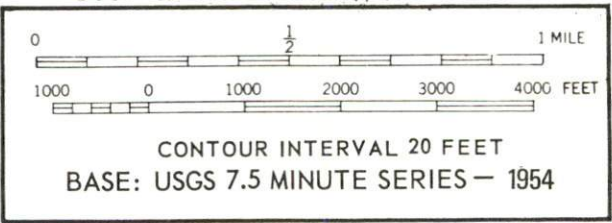
SCOTTSDALE

174  
94 Ac

374  
20 Ac

274  
125 Ac

674  
20 Ac





# SCOTTSVILLE, KENTUCKY --- Index to Industrial Sites --- 1974

For detailed data on individual sites, contact Mr. Thomas Crow, Scottsville, Kentucky 42164  
or the Kentucky Department of Commerce, Capital Plaza Tower, Frankfort, Kentucky 40601





INDUSTRIAL RESOURCES  
SCOTTSVILLE, KENTUCKY

Prepared by  
The Kentucky Department of Commerce  
in cooperation with  
The Scottsville-Allen County Chamber of Commerce

1974



## TABLE OF CONTENTS

<u>Chapter</u>	<u>Page</u>
INDUSTRIAL SITES . . . . .	i
SCOTTSVILLE, KENTUCKY - A RESOURCE PROFILE . . . . .	1
THE LABOR MARKET. . . . .	5
Population Trends . . . . .	5
General Employment Characteristics, 1972 . . . . .	5
Manufacturing Employment Trends by Industry. . . . .	6
Scottsville Manufacturing Firms, Their Products and Employment . . . . .	6
Wages. . . . .	9
Labor Organizations . . . . .	10
Estimated Male Labor Supply . . . . .	10
Estimated Female Labor Supply . . . . .	10
Per Capita Personal Income. . . . .	11
TRANSPORTATION . . . . .	12
Rail. . . . .	12
Truck Service . . . . .	12
Air . . . . .	13
Bus . . . . .	13
Taxi . . . . .	13
Rental Services. . . . .	13
POWER AND FUEL . . . . .	14
Electricity. . . . .	14
Natural Gas . . . . .	14
Other Fuels . . . . .	14
WATER AND SEWERAGE . . . . .	15
Water . . . . .	15
Sewerage . . . . .	16
LOCAL GOVERNMENT . . . . .	17
City. . . . .	17
County. . . . .	17
Assessed Value of Property, 1973 . . . . .	17



<u>Chapter</u>	<u>Page</u>
Property Taxes . . . . .	17
Local Property Tax Rate Per \$100 of Assessed Valuation, 1973 . . . . .	18
Safety . . . . .	18
Police . . . . .	18
Fire . . . . .	18
Rescue Service . . . . .	18
Sanitation . . . . .	18
 EDUCATION . . . . .	 19
Public Schools . . . . .	19
Vocational Schools . . . . .	19
Colleges and Universities . . . . .	20
 HEALTH . . . . .	 22
Hospitals . . . . .	22
Nursing Homes . . . . .	22
Public Health . . . . .	22
 OTHER LOCAL FACILITIES . . . . .	 23
Communications . . . . .	23
Library Services . . . . .	23
Religious Institutions . . . . .	23
Financial Institutions . . . . .	24
Hotels and Motels . . . . .	24
Clubs and Organizations . . . . .	24
 RECREATION . . . . .	 26
Local . . . . .	26
Area . . . . .	26
 AGRICULTURE - NATURAL RESOURCES - CLIMATE . . . . .	 27
Agriculture . . . . .	27
Natural Resources . . . . .	27
Climate . . . . .	28
 HISTORY . . . . .	 29









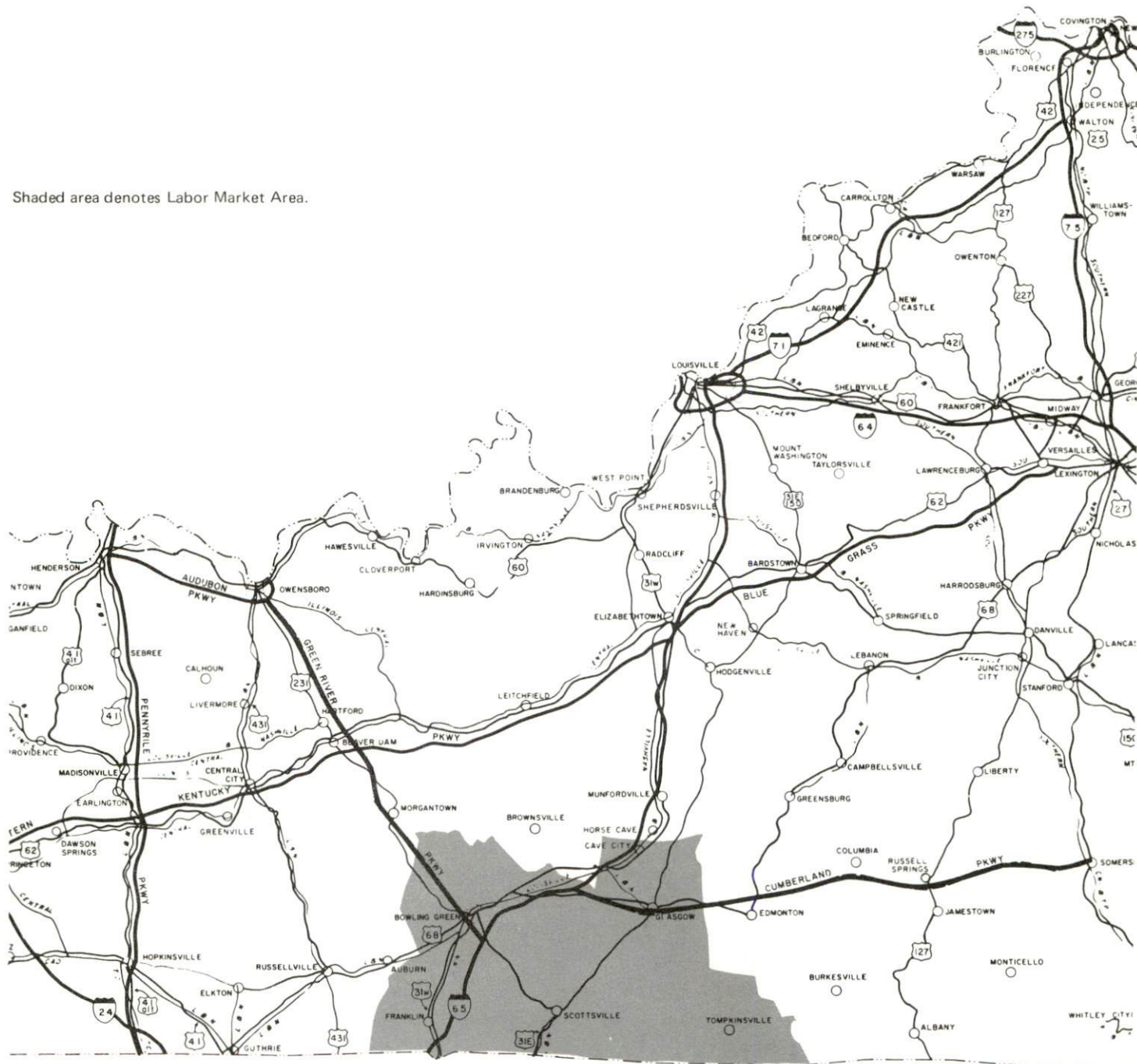
AERIAL VIEW OF SCOTTSVILLE, KENTUCKY



# SCOTTSVILLE LABOR MARKET AREA



Shaded area denotes Labor Market Area.





## SCOTTSVILLE, KENTUCKY - A RESOURCE PROFILE

Scottsville, the county seat of Allen County, is situated in the center of the county. Scottsville is 120 miles from Louisville, Kentucky; 47 miles from Nashville, Tennessee; and 234 miles from Birmingham, Alabama. In 1970, Scottsville had a population of 3,584.

Allen County, with a land area of 351 square miles, is located in southcentral Kentucky, on the Kentucky-Tennessee border. Allen County had a 1970 population of 12,598.

### The Economic Framework

Total employment in Allen County averaged 4,740 in 1972, with agriculture providing 1,040 jobs, manufacturing 950, government 550, and trade and services 945. Since 1963, manufacturing employment has increased by 63 percent, providing 456 new jobs. Major industrial products are lumber and wood products, pneumatic motors and apparel.

Per capita personal income in the county in 1971 was \$2,370, a 132 percent increase since 1961.

The Scottsville labor market area includes Allen County, the four adjoining Kentucky counties and the two adjoining Tennessee counties. Employment in the Kentucky portion of the labor market area totaled 57,230 in 1972, including 7,430 in agriculture, 14,980 in manufacturing, 7,680 in government, and 12,945 in trade and services. Manufacturing employment in the Kentucky portion of the labor market area has increased 127 percent since 1963, with the sharpest gains in the machinery, apparel, metal products, and lumber industries.

### Resources for Growth

1. There is a current estimated labor supply of 4,350 men and 4,420 women available for industrial jobs in the Kentucky portion of the labor market area. In addition, 5,959 young men and 5,623 young women will become 18 years of age by 1980 and potentially available for work. Also, the current labor supply would be increased by the number of men and women in the adjoining Tennessee counties who are available for industrial jobs.

2. Scottsville is served by the Louisville & Nashville Railroad Company. An entrance to Interstate 65 is located 21 miles from Scottsville via U. S. 231 and access to Cumberland Parkway is 23 miles away via U. S. 31-E. The nearest commercial airport is in Nashville, Tennessee, 47 miles south.

3. Scottsville is served electric power by the Tri-County Electric Membership Corporation, whose source of supply is the Tennessee Valley Authority. Scottsville Gas Department provides natural gas to the area and is supplied by Texas Gas Transmission Corporation. There are three propane and butane distributors and four distillate fuel oil distributors serving the area.

4. There are two school systems operating in Allen County - the Scottsville Independent School District and the Allen County School System. Within 85 miles of Scottsville there are twelve universities and senior colleges, one junior college and two community colleges. An Area Vocational Education Center is located in Scottsville and offers 7 courses. The nearest State Vocational-Technical School is in Bowling Green, 25 miles distant and offers 23 fields of study.

### Community Programs for Improvement

#### Recent

1. An expansion has been completed and new equipment purchased for the Allen County War Memorial Hospital.
2. New fire equipment and a new ambulance have been purchased.
3. Scotscraft, Inc., has completed a 60,000 square foot addition.
4. A business center has been completed.
5. The Dollar General Stores Corporation has added a 100,000 square foot warehouse to its establishment.
6. Two housing projects, a 56-unit low-income complex and a 40-unit complex have been completed.
7. The Scottsville Independent School District has completed construction of a \$30,000 library addition at the Scottsville Elementary School. Extensive remodeling and an addition to the high school have been completed at a cost of \$475,000.

#### Underway

1. Additional lines are being laid in the water and sewer systems.
2. New boat docks and camps are being located on the lake.
3. New subdivisions are presently under construction.



### Planned

1. A 300,000 gpd water treatment plant is planned for construction.
2. A study is being planned to update the sewerage disposal plant.
3. A county water district is being planned.
4. A new bank building is planned.

5. The Allen County School System is planning a 6-room addition to the high school.

### Recreation, Entertainment and Livability

Scottsville is within easy driving distance of several excellent park and recreational facilities.

Only 10 miles north of Scottsville is the Barren River Lake State Resort Park. Some of the attractions offered at the park include a resort lodge and coffee shop, cottages, camping facilities, golf course, pool, riding stables, boat slips and boat ramps, beach, fishing, tennis, and planned recreation.

Mammoth Cave National Park, 59 miles from Scottsville is world famous. Mammoth Cave consists of the largest cave network ever discovered. Park attractions include the Snowball Dining Room (267 feet below the surface), the Frozen Niagara, Crystal Lake and the Bottomless Pit. A scenic boat trip on the Green River, nature trails, an Amphitheater and a Visitor Center exhibit room with audiovisual programs hourly are additional features of the park. The park also contains a hotel, motor lodge, cottages, dining room, coffee shop, service station, facilities for tennis and shuffleboard. There are gift and craft shops with numerous Kentucky Handicraft items and live craft exhibits during the summer.

Lake Malone State Park is located 70 miles from Scottsville. This 338-acre park offers camping on Lake Malone, swimming, beach, boat rental, motors, paddle boats, dock, launching ramp, open boat slips, fishing, picnic shelter and playground.

Dale Hollow Lake is 63 miles from Scottsville. The 27,700-acre lake provides beautiful scenery as well as excellent fishing.

Two Kentucky State Shrines - Old Mulkey Meeting House and Jefferson Davis Monument - are within 70 miles of Scottsville. Also, two state parks located nearby in Tennessee offer additional recreational opportunities.

Western Kentucky University at Bowling Green, 25 miles away, offers an array of cultural and athletic activities. The Hardin Planetarium and the Kentucky Building, housing a collection of art and artifacts devoted to local and state history, are open to the public.



## THE LABOR MARKET

### POPULATION TRENDS

Area	Population				Percent Change	
	1972*	1970	1960	1950	1960-70	1950-60
Scottsville	N. A.	3,584	3,324	2,060	+ 7.8	+61.4
Labor Market Area	129,400	123,403	109,410	110,454	+12.8	- 0.9
Allen County	12,800	12,598	12,269	13,787	+ 2.7	-11.0
Barren County	29,500	28,677	28,303	28,461	+ 1.3	- 0.6
Monroe County	12,400	11,642	11,799	13,770	- 1.3	-14.3
Simpson County	13,500	13,054	11,548	11,678	+13.0	- 1.1
Warren County	61,200	57,432	45,491	42,758	+26.2	+ 6.4

\*Provisional estimates.

Sources: U. S. Department of Commerce, Bureau of the Census, Census of Population, 1970, 1960, 1950. U. S. Bureau of the Census, Current Population Reports, Series P-26, June 1973.

### GENERAL EMPLOYMENT CHARACTERISTICS, 1972

Major Employment Group	Employment	
	Allen County	Labor Market Area*
TOTAL	4,740	57,230
Agricultural	1,040	7,430
Nonagricultural	3,700	49,800
Manufacturing	950	14,980
Government	550	7,680
Trade and Services	945	12,945
Other	1,255	14,195

\*Includes the Kentucky counties of Allen, Barren, Monroe, Simpson, and Warren.

Source: Kentucky Department for Human Resources, Bureau for Administration and Operations.

MANUFACTURING EMPLOYMENT TRENDS BY INDUSTRY  
MARCH 1973 AND 1963

Industry	Allen County			Labor Market Area		
	1973	1963	%Change	1973	1963	%Change
TOTAL	1,178	722	+ 63.2	16,692	7,370	+126.5
Food & Kindred						
Products	20	4	+400.0	962	956	+ 0.6
Tobacco	0	0	0	116	176	- 34.1
Apparel, Textiles,						
Leather	527	367	+ 43.6	4,445	2,545	+ 74.7
Lumber, Furniture	615	349	+ 76.2	1,257	746	+ 68.5
Printing & Publishing,						
Paper	16	2	+700.0	632	123	+413.8
Chemicals, Petroleum						
& Coal, Rubber	0	0	0	1,217	621	+ 96.0
Stone, Clay & Glass	0	0	0	63	30	+110.0
Primary Metals	0	0	0	44	0	--
Machinery, Metal						
Products, Equip.	0	0	0	7,872	2,173	+262.2
Other	0	0	0	84	0	--

Source: Kentucky Department for Human Resources, Number of Workers in Manufacturing Industries Covered by Kentucky Unemployment Insurance Law Classified by Industry and County, March 1973, March 1963.

SCOTTSVILLE MANUFACTURING FIRMS,  
THEIR PRODUCTS AND EMPLOYMENT

Firm (Establishment date)	Product	Employment			
		Total	Male	Female	Organized
E. L. Bruce & Company, Inc. (1969)	Hardwood flooring and kiln dried oak sticks	40	40	0	
Bryant Lumber Company (1933)	Lumber	41	40	1	
Cannon Publishing Company (1935)	Newspaper	4	1	3	
The Citizens Time (1890)	Newspaper and job printing	6	3	3	
Orvill Clark Lumber Company (1945)	Lumber	30	30	0	
Gamble Brothers, Inc. (1972)	Hardwood dimension	150	--	--	
General Electric Company (NA)	Pneumatic motors	200	--	--	

(Cont'd.)

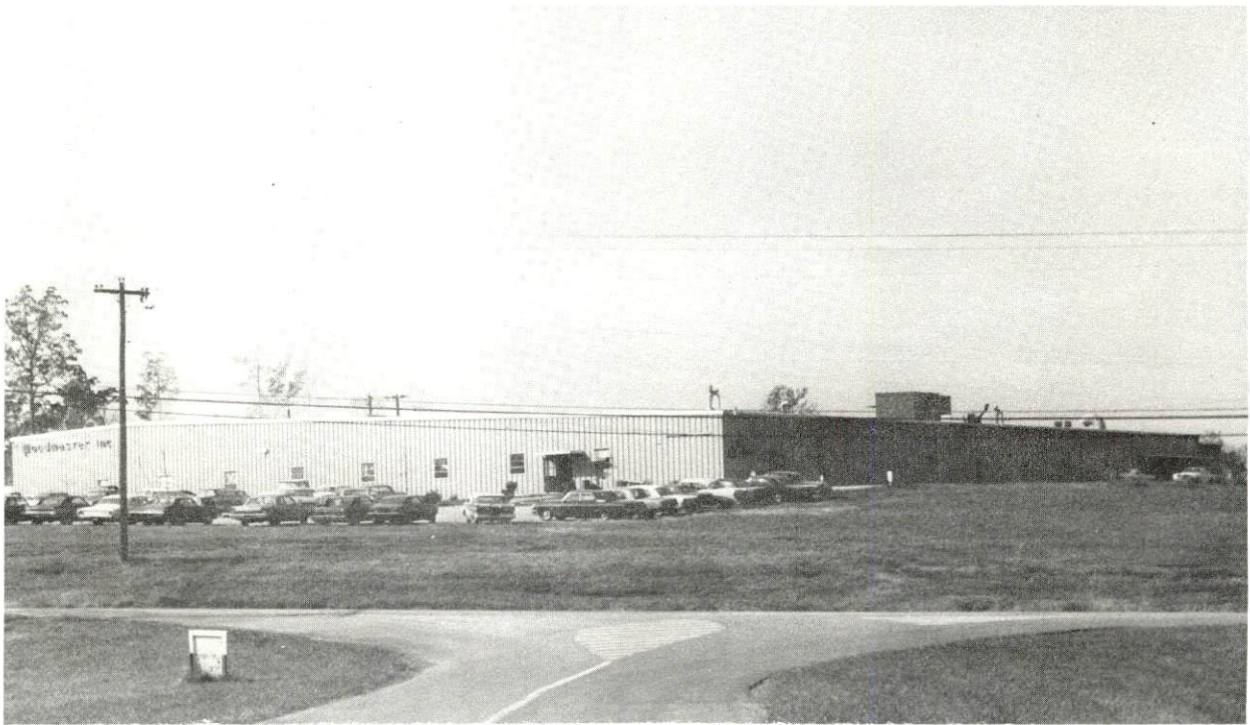


<u>Firm (Establishment date)</u>	<u>Product</u>	<u>Employment</u>			<u>Organized</u>
		<u>Total</u>	<u>Male</u>	<u>Female</u>	
Gerald Printing Service (1935)	Job printing	11	10	1	
Olde Kentucky Foods, Inc. (1972)	Country hams and bacon	10	7	3	
Scotscraft, Inc. (1961)	Drapery hardware and accessories	265	72	193	*
Scottsville Ready Mix (1963)	Concrete	3	3	0	
Washington Overall Manufacturing Co. (1928)	Men's and boys' trousers	375	60	315	*
Marvin Wood Lumber Company (1950)	Lumber, pallet stock and furni- ture dimensions	60	59	1	
Woodmaster - Division of Modernfold Indus- tries (1964)	Wood folding doors, metal and vinyl folding doors	104	100	4	*

Source: Kentucky Department of Commerce, 1974 Kentucky Directory of Manufacturers.



KENTUCKY PALLET CORP.



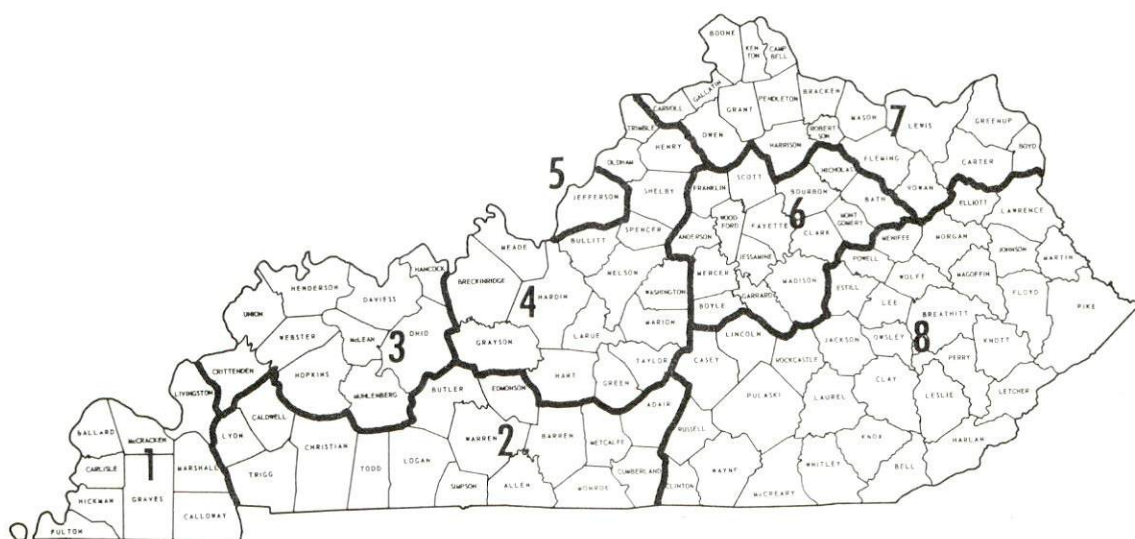
WOODMASTER, INC.



## WAGES

Occupational wage rates for specific industries are usually not available to most government agencies, and wage data furnished to state employment agencies by industrial employers is protected from disclosure by federal law. The most reliable up-to-date wage information can be obtained by direct contact with local employers.

Associated Industries of Kentucky, a voluntary organization of Kentucky businesses, regularly collects occupational wage rates and fringe benefits data from participating member firms. Data is compiled for over 130 clearly defined office, production, and service occupations. Tabulations are published for eight regions of Kentucky, as shown on the map below. It should be noted that the data may be weighted by the preponderance of firms in the larger cities and may be somewhat higher than the rates paid in the smaller communities. Data from these tabulations are available, upon request, from the Kentucky Department of Commerce, Frankfort, Kentucky 40601.



Associated Industries of Kentucky Area Wage Surveys

## LABOR ORGANIZATIONS

<u>Union</u>	<u>Representing manufacturing workers at:</u>
International Association of Machinists and Aerospace Workers	Scotscraft, Inc. Woodmaster, Inc.
Drivers, Warehousemen, Maintenance & Allied Workers of America, Local #1	Washington Overall Manufacturing Company

### ESTIMATED MALE LABOR SUPPLY SCOTTSVILLE LABOR MARKET AREA

<u>Area</u>	Current			Under- employed	Future
	Total	Not in Labor Force	Unemployed		Reaching 18 yrs. of age by 1980
Labor Market					
Area	4,350	520	1,130	2,700	5,959
Allen	370	30	110	230	588
Barren	800	0	230	570	1,437
Monroe	880	490	180	210	642
Simpson	230	0	70	160	652
Warren	2,070	0	540	1,530	2,640

Sources: Kentucky Department for Human Resources, Kentucky Labor Supply Estimates by County, 1973. Kentucky Department of Commerce, Future Labor Supply by 1980.

### ESTIMATED FEMALE LABOR SUPPLY SCOTTSVILLE LABOR MARKET AREA

<u>Area</u>	Current			Under- employed	Future
	Total	Not in Labor Force	Unemployed		Reaching 18 yrs. of age by 1980
Labor Market					
Area	4,420	390	1,060	2,970	5,623
Allen	420	0	90	330	565
Barren	860	70	220	570	1,365
Monroe	650	320	100	230	548
Simpson	300	0	80	220	657
Warren	2,190	0	570	1,620	2,488

Sources: Kentucky Department for Human Resources, Kentucky Labor Supply Estimates by County, 1973. Kentucky Department of Commerce, Future Labor Supply by 1980.



PER CAPITA PERSONAL INCOME

<u>Area</u>	<u>1971</u>	<u>1961</u>	<u>%Change</u>
Allen County	\$2,370	\$1,020	+132.4
Labor Market Area			
Range*	\$1,918 - 3,420	\$894 - 1,576	N.A.
Kentucky	3,310	1,677	+ 97.3
U. S.	4,164	2,265	+ 83.8

\*Includes the Kentucky counties of Allen, Barren, Monroe, Simpson, and Warren.

Sources: University of Kentucky, Office of Development Services and Business Research, Per Capita Income in Kentucky. U. S. Department of Commerce, Bureau of Economic Analysis, Survey of Current Business, August, 1973.

## TRANSPORTATION

### Rail

Line serving Scottsville - Louisville & Nashville Railroad Company  
Services - 2 freights weekly, switching, siding for 20 cars;  
nearest piggyback service is in Glasgow, 25 miles distant

For details on routing, schedules, rates, and services, contact:

Manager of Industrial Development  
Louisville & Nashville Railroad  
Company  
908 West Broadway  
Louisville, Kentucky 40203

### Truck Service

<u>Company</u>	<u>Home Office</u>
Great Lakes Express Manning Motor Express, Inc.	Saginaw, Michigan 48602 1203 South Green Street Glasgow, Kentucky 42141
McLean Trucking Company	P. O. Box 213 - 617 Waughtown Street Winston-Salem, North Carolina 27107
Skaggs Transfer, Inc.	2400 Ralph Avenue Louisville, Kentucky 40216
Theatres Service Company	830 Willoughby Way, N.E. Atlanta, Georgia 30301
TSC Fast Express, Inc.	1224 Antioch Park Nashville, Tennessee 37211

### Other Freight Services

	<u>Nearest Shipping Center</u>
United Parcel Service	Bowling Green, 25 miles northwest of Scottsville
REA Express	Bowling Green, 25 miles northwest of Scottsville



HIGHWAY MILES AND TRUCK TRANSIT TIME IN DAYS FROM  
SCOTTSVILLE, KENTUCKY, TO SELECTED MARKET CENTERS

City	Delivery		City	Delivery	
	Highway Miles	Time TL		Highway Miles	Time TL
Atlanta, Ga.	299	2	Los Angeles, Calif.	2,105	5
Birmingham, Ala.	234	2	Louisville, Ky.	120	1
Chicago, Ill.	404	3	Nashville, Tenn.	47	1
Cincinnati, Ohio	243	2	New Orleans, La.	577	3
Cleveland, Ohio	486	3	New York, N. Y.	902	4
Detroit, Mich.	508	3	Pittsburgh, Pa.	512	3
Knoxville, Tenn.	232	2	St. Louis, Mo.	349	2

Source: Delivery time only - Renner's Express, Inc., P. O. Box 613, Indianapolis, Indiana 46206.

Air

Nearest Commercial

Nashville Metropolitan Airport  
 Location: Nashville, 47 miles south of Scottsville  
 Runways: 3 paved  
 Length: 4,025 feet, 7,700 feet, 8,000 feet  
 Traffic Control: Approved instrument approach; Unicom  
 Lighting: Beacon, runway  
 Services: American, Braniff, Piedmont, Allegheny, Eastern, Ozark, Southern, Trans World, Delta, Air Taxi, Aerie Airlines; Fuel: Exxon, Texaco, Shell, 80/87, 100/130, 115/145, and jet fuel; courtesy car, limousine, bus, taxi, car rentals, major repairs, restaurant, weather information, tie downs, hangars, APU, ADI, oxygen, charter, flight instruction, rest rooms

Air Freight

Service: Freight carrying airlines provide regular service

Bus -Southern Greyhound Bus Lines  
 Continental Trailway

Taxi - 24-hour service daily

Rental Services - U-Haul

## POWER AND FUEL

### Electricity

Company serving Scottsville - Tri-County Electric Membership Corporation  
Source of power - Tennessee Valley Authority  
Total generating capacity - 23,200,000 KW  
For industrial rates contact:

Tri-County Electric Membership Corporation  
East Main Street  
Scottsville, Kentucky

### Natural Gas

Company serving Scottsville - Scottsville Gas Department  
Source of supply - Texas Gas Transmission Corporation  
Size of transmission mains - 30-inch (supplier); 6-inch (distributor)  
Distribution mains - 2, 4, and 6 inches  
Distribution pressure - Approximately 24 psi  
Btu content - 1,000 per cubic foot; Specific gravity - .57 to .60  
Monthly rates:

Minimum up to	2,000 cu. ft.	\$2.47
Next	5,000 cu. ft.	1.235 per 1,000 cu. ft.
Next	5,000 cu. ft.	1.135 per 1,000 cu. ft.
Next	5,000 cu. ft.	1.035 per 1,000 cu. ft.
Next	10,000 cu. ft.	.935 per 1,000 cu. ft.
Next	225,000 cu. ft.	.835 per 1,000 cu. ft.
All additional		.785 per 1,000 cu. ft.
Tap-on fee		\$75.00

### Other Fuels

Propane and butane - Ashland Bottle Gas, Pargas, and Signal LP  
Gas are all located at Scottsville

### Fuel Oils -

Distillate fuel oil - Ashland Oil Company and Shell Oil Company at  
Glasgow; Standard Oil Company and Sun Oil Company at Scottsville

Residual fuel oil - Arrangements must be made with the refinery

Low sulphur content coal - Available from eastern Kentucky



## WATER AND SEWERAGE

### Water

Company serving Scottsville - Scottsville Water Department\*  
Source - Calvert Springs  
Treatment plant capacity - 720,000 gpd  
Average daily consumption - 600,000 gallons  
Peak daily consumption - 720,000 gallons  
Type treatment - Chlorine and sodium silafluoride  
Storage capacity - 700,000 gallons  
Size lines - 4, 6, 8, 10, and 12 inches  
Average pressure - approximately 50 psi

#### MONTHLY WATER RATES FOR WHOLESALE AND INDUSTRIAL CONSUMERS

---

First	2,000 gallons or less	\$4.20 (Minimum)
Next	2,000 gallons	1.40 per M gallons
Next	4,000 gallons	1.12 per M gallons
Next	12,000 gallons	.98 per M gallons
All over	20,000 gallons	.63 per M gallons

#### MINIMUM MONTHLY WATER SERVICE CHARGES

5/8 or 3/4 - inch meters	\$4.20
1 - inch meters	6.00
1 1/4 - inch meters	9.00
1 1/2 - inch meters	12.00
2 - inch meters	20.00
Tap-on fee	50.00

Name of water district - Allen County Water District  
Area served - Northern and eastern portions of the county when system  
is put into operation, then extending to the southern portion  
Date when water district will begin operating - Summer of 1974  
Source of supply of treated water - Glasgow

---

\*Additional lines are being laid in the water system, and treated water from Glasgow will also be purchased to help increase the water supply. A 300,000 gpd treatment plant is also being planned for the near future.

Surface water sources - Barren River

Average discharge - Barren River near Finney, Kentucky - 1,374 cfs  
(20 year record, USGS - Unadjusted)

Expected ground water yield - 50 to 200 gpm along the extreme northern and western borders of the county; 5 to 50 gpm in a band extending from the northern to the central portion; and 5 gpm or less over the remainder of the county

### Sewerage

Company serving Scottsville - Scottsville Sewer Plant\*

Design population - 4,600

Average daily flow - 220,000 gallons

Treatment - Primary and secondary

Type treatment - High rate trickling filter

Treated effluent discharged into - Bays Fork

Size of sanitary mains - 4, 6, 8 and 12 inches

Rates - 75 percent of monthly water bill

Tap-on fee - \$100

\*Improvements: Additional lines are being laid to the sewerage system, and a study is being planned to update the disposal system.



LOCAL GOVERNMENT

City

Structure - Mayor - 4-year term; 6 councilmen - 2-year terms

Budget 1973-74 - General Fund	\$131,815
Water and Sewer Fund	249,349
City Gas System	258,156

Fees and licenses - Business and professional fees range from \$12.50 to \$50.00 annually

County

Structure - County Judge - 4-year term; 5 magistrates - 4-year terms

Budget 1973-74 - General Fund \$145,895; Road Fund \$67,746

Assessed Value of Property, 1973

<u>Classes of Property</u>	<u>Scottsville</u>	<u>Allen County</u>
Real Estate	\$14,581,488	\$55,519,837
Tangibles	11,371,481	17,476,751
Public Service	710,624	11,620,490

Property Taxes

Land and buildings are taxed by the state and may be taxed by local jurisdictions. The state rate is \$0.015 per \$100 of assessed valuation.

Tangible personal property owned by manufacturers (automobiles, trucks, finished goods, office furniture, office equipment) is taxed by the state at \$0.15 per \$100 and may be taxed by local jurisdictions.

Manufacturing machinery, raw materials inventories, and goods in process inventories are not subject to local taxation. The state rate is \$0.15 per \$100.

Property stored in public warehouses is not subject to local taxation. The state rate is only \$0.015 per \$100.

All property is assessed at 100 percent of fair cash value.

Local Property Tax Rate per \$100 of Assessed Valuation, 1973\*

<u>Taxing Jurisdiction</u>	<u>Scottsville</u>	<u>Allen County</u>
County	\$ .224	\$ .224
School	.595	.612
City	.250	

Safety

<u>Police</u>	<u>Scottsville</u>	<u>Allen County</u>
Total staff	11	3
Radio-patrol cars	2	1
Other equipment	2 walkie-talkies 1 breathalyzer	standard

Fire

American Insurance Association Fire Rating	6	
Volunteers	16	
Equipment:		
1,000 gpm pumpers	2	City trucks
500 gpm pumper	1	answer calls from the county

Rescue Service

Allen County Civil Defence Rescue Squad:  
 Number of volunteers - 25  
 Equipment - One ton truck - radio equipped, converted school bus, 2 jeeps, 1 boat (14 foot) and motor, dragging equipment, 5 portable generators, 2 trucks (2 1/2 ton), 1 communication van, citizens band and business band radios, 4 walkie-talkies  
 Personnel training - First Aid, Civil Defense school training, radio operations and fire school

Sanitation

	<u>Scottsville</u>
Type service	Municipal
Fee charged:	
residential	\$2.00
business	Contract
Collection frequency:	
residential	Twice weekly
business	Contract
Trash pickup	Contract
Disposal method	Landfill

\*Kentucky Department of Revenue, Kentucky Property Tax Rates, 1973.



## EDUCATION

### Public Schools

	<u>Scottsville*</u>	<u>Allen County*</u>
Total Enrollment (1973-74)	500	2,205
Elementary	250	930
Middle School		625
High School	250	650
Student-Teacher Ratio	20 - 1	27 - 1
Elementary	19 - 1	29 - 1
Middle School		30 - 1
High School	21 - 1	22 - 1
Percent High School Graduates to College	55.0	45.2
Expenditures Per Pupil (1972-73)	\$627.55	\$491.20
Bonded Indebtedness, June 30, 1973	\$510,000	\$1,772,000

### Vocational Schools

#### Nearest State School

Location	Bowling Green State Vocational-Technical School	
	Bowling Green	
Miles Distant	25 miles from Scottsville	
Curriculum	Marketing & Distributive Education	Auto Body Repair Auto Mechanics Carpentry Commercial Foods Drafting Electricity Machine Shop Printing Radio & TV Repair Tool & Die Making Welding
	Dental Assistant	
	Dental Technician	
	Health Careers	
	Nurse Aide	
	Practical Nursing	
	Surgical Technician	
	Ward Clerk	
	Electronics (Technology)	
	Highway Technology	
	Technical Drafting	
	Air Conditioning & Refrigeration	

\*The Allen County School System and the Scottsville Independent School District will merge on July 1, 1974.

Nearest Area Education Center

Allen County Area Vocational Education  
Center  
Location           Scottsville  
Curriculum       Accounting Junior Management  
                      Clerical  
                      Secretarial  
                      Auto Mechanics  
                      Carpentry  
                      Drafting  
                      Electricity

Arrangements can be made to provide training in the specific production skills required by an industrial plant. Instruction may be conducted either in the vocational school or in the industrial plant, depending upon the desired arrangement and the availability of special equipment.

Colleges and Universities

<u>Name</u>	<u>Area - Within 85 miles</u>		<u>Highest Degree Conferred</u>
	<u>Location</u>	<u>Enrollment (Fall, 1973)</u>	
Western Kentucky University	Bowling Green	11,749	Masters
Campbellsville College	Campbellsville	693	Baccalaureate
Lindsey Wilson Junior College	Columbia	269	Associate
Hopkinsville Community College	Hopkinsville	808	Associate
Elizabethtown Community College	Elizabethtown	837	Associate
Austin Peay State University	Clarksville, Tenn.	3,668*	Masters
Belmont College	Nashville, Tenn.	930*	A. B. , B. S. , A. A.
David Lipscomb College	Nashville, Tenn.	2,061*	B. A. , B. S.
Fisk University	Nashville, Tenn.	1,558*	A. B. , B. S. , B. M. , M. A.
George Peabody College for Teachers	Nashville, Tenn.	1,959*	Ph. D.
McHarry Medical College	Nashville, Tenn.	622*	M. A. , M. D. , D. D. S. , Cert.
Scarritt College for Christ Work	Nashville, Tenn.	142*	B. A. , M. A. , M. C. W.
Trevecca Nazarene College	Nashville, Tenn.	766*	A. B. , B. S.
Tennessee State University	Nashville, Tenn.	4,640*	Masters
Vanderbilt University	Nashville, Tenn.	6,895*	Ph. D.

\*1972 enrollment figures.





ALLEN COUNTY HIGH SCHOOL



ALLEN COUNTY VOCATIONAL SCHOOL

## HEALTH

### Hospitals

<u>General Hospital</u>	<u>Location</u>	<u>Beds</u>
Allen County War Memorial Hospital	Scottsville	53

General hospital facilities - Operating rooms, X-ray, laboratory, maternity ward, recovery room, emergency room

Medical staff - 5 doctors, 9 registered nurses, 7 graduate licensed nurses, 6 licensed practical nurses, 29 nurse aides, 1 registered dietician, 12 dietary personnel

### Nursing Homes

	<u>Number</u>	<u>Beds</u>
Personal care homes	5	168

### Public Health

Facility - Allen County Health Department

Staff - Sanitarian, nurse, clerk

Budget 1973-74 - \$33,021

## OTHER LOCAL FACILITIES

### Communications

Telephone - General Telephone Company  
Services - Standard - one party service only

Telegraph - Western Union  
Services - Telephone

Postal - U. S. Post Office  
Class - First  
Mail received - Twice daily  
Mail dispatched - Twice daily

Newspapers - Citizens Times	Allen County News
Weekly and	
Circulation - 3,643	2,700
Other papers received from - Louisville, Bowling Green, and Glasgow, Kentucky; Nashville, Tennessee	

Radio - WLCK-AM & FM  
Stations received from - Louisville, Glasgow, Bowling Green, and  
Russellville, Kentucky; LaFayette and Nashville, Tennessee

Television -  
Reception from - Bowling Green, Kentucky; Nashville, Tennessee

Educational Television - Nashville, Tennessee - Channel 2

### Library Services

Public library - Allen County Library  
Size collection - 15,000 volumes  
Circulation, 1973-74 - 90,000 to 100,000 (library and bookmobile)  
Services - Magazines, records, story hour, pictures, projector,  
book stations, bookmobile, games for Junior Department, magazines  
and books supplied to nursing homes

### Religious Institutions

Number of churches - 6  
Denominations - Baptist, Catholic, Church of Christ, Church of God,  
Methodist, Nazarene  
Nearest Synagogues - Nashville, Tennessee - 47 miles distant  
Congregations - Sherith Israel (orthodox), Ohabai Shalom (reform),  
West End Synagogue (conservative)



Financial Institutions

Statement as of December 31, 1973

<u>Banks</u>	<u>Assets</u>	<u>Deposits</u>
Kentucky State Bank	\$14,243,102	\$12,713,655
The Farmers National Bank	20,160,738	18,590,948

Hotels and Motels

Total number - 4  
Units - 67

Clubs and Organizations

Business and Civic - Rotary, Lions, Jaycees, Chamber of Commerce,  
Kiwanis

Fraternal - Masons, VFW, American Legion

Women's - Homemakers, Garden Club, Mother's Club, Eastern Star,  
DAR, Business and Professional Women

Youth - Boy Scouts, Girl Scouts, Brownies, Cub Scouts, FFA, FHA,  
4-H, Little League, Rainbow Girls

Other - Port Oliver Yacht Club



FARMERS NATIONAL BANK



KENTUCKY STATE BANK

## RECREATION

### Local

#### Public Recreation Facilities

Supervised program - Youth, Inc.  
Park - 1  
Playgrounds - 4  
Baseball diamond - 1  
Football field - 1  
Other - Picnic grounds  
Youth Center

#### Private Recreation Facilities

Country club - 1  
Golf course - 1  
Swimming pool - 1  
Movie theaters - 1 indoor  
1 drive-in

### Area (Within 70 miles)

Barren River Lake State Resort Park  
Mammoth Cave National Park  
Lake Malone State Park  
Dale Hollow Lake  
Old Mulkey Meeting House State Shrine  
Jefferson Davis Monument State Shrine  
Standing Stone State Park in Tennessee  
Cedars of Lebanon State Park in Tennessee



AGRICULTURE - NATURAL RESOURCES - CLIMATE

Agriculture\*

	<u>Allen County</u>	<u>Labor Market Area</u>
Total land area (acres)	224,640	1,240,076
Percent of area in farm land	77.7	80.4
Number of farms	1,652	9,685
Average size of farms (acres)	105.6	103.0
1969 value of all farm products	\$ 6,200,903	\$ 55,340,446
Value per farm	3,753	5,714
Total crop sales	2,025,410	19,548,898
Total livestock & livestock products	4,087,862	35,441,892
1972 agricultural production included:		
Burley tobacco (lbs.)	3,354,000	26,974,000
Corn for grain (bu.)	592,800	6,297,000
Cattle and calves (number)	39,500	254,300
Hogs and pigs (number)	16,400	133,000
Milk production, 1971 (lbs.)	25,350,000	265,680,000

Natural Resources

Principal mineral resources	Limestone
Other mineral resources	Petroleum
Acres of commercial forest land	83,500
Most abundant tree species	Red oak, white oak, hickory, yellow poplar, ash, beech, hard maple

\*U.S. Department of Commerce, Bureau of the Census, Census of Agriculture, 1969. U.S. Department of Agriculture and Kentucky Department of Agriculture, Kentucky Agricultural Statistics, 1972.

Climate\*

Allen County

Temperature

Annual mean (30-year record)	60.0 degrees
Average annual 1972	59.6 degrees
Record highest, July, 1966 (7-year record)	103.0 degrees
Record lowest, January, 1966 (7-year record)	- 6.0 degrees
Normal heating degree days (30-year record)	3,578
(Heating degree day totals are the sums of negative departures of average daily temperatures from 65 degrees F.)	

Precipitation

Mean annual total (30-year record)	45.14 inches
Mean annual snow and sleet (31-year record)	11.40 inches
Total precipitation 1972	54.41 inches
Mean number days precipitation (.01 inch or more) (31-year record)	118
Average number days thunderstorms (31-year record)	56

Prevailing winds (22-year record)

South

\*U. S. Department of Commerce, Environmental Science Services Administration, Climatological Data, 1972. Station of record: Nashville, Tennessee.

## HISTORY

Allen County is situated in southcentral Kentucky and has an area of 351 square miles. Its surface is predominantly hilly, its soil fairly fertile, and timber grows throughout its area. The Barren River forms about one-half of its eastern and all of its northern border, and several creeks flowing into the Barren furnish a good drainage system for the county.

The county was first settled in 1797 in the vicinity of Scottsville by Joseph Ficklin, Toliver Craig, Henry Collins, Daniel Moore, and Abram Wood. Daniel Boone had passed through the area earlier as evidenced by his initials found carved on a tree with the date 1777. In 1815 Allen County became the fifty-seventh county established in Kentucky, taking its name from Colonel John Allen, who migrated from Virginia to Kentucky in 1776 and settled near Danville. A military leader of considerable courage, Allen's practice of law put him among the first men of his profession.

Scottsville, the county seat, is named for General Charles Scott, who served on a military advisory board in Kentucky for President George Washington during the troubled period of the 1790's and was elected Kentucky's fourth governor in 1808. The city is scenically located on a central hill surrounded by other hills, and a red brick courthouse stands in the middle of its town square.

Allen County's population has increased from the first recorded figure of 5,327 in 1820 to a high of 13,787 in 1950. There was a decline to 12,269 in 1960, but due to industrial growth, the population grew to 12,598 in 1970.

Until the mid-1800's the entire population of Allen County made its livelihood on farms, and livestock was an important factor in the county's economy. By 1850 there were several flour mills, boot and shoe makers, a few furniture makers, wool carders, and leather workers among the manufacturing groups of the county. Oil wells had been drilled by 1870, making petroleum one of the county's principal natural resources. Since 1963 manufacturing employment has increased to 1,178 and in 1972, 3,700 of the county's 4,740 workers were employed in nonagricultural jobs. Major industrial products are lumber, wood products, pneumatic motors, and apparel. Largest among Scottsville's industrial plants are: Washington Overall Manufacturing Company, Scotscraft, Incorporated, Woodmaster, Incorporated, and General Electric Company. Primary agricultural products of Allen County are corn, hay, tobacco, poultry, cattle and hogs.



The area is serviced by U. S. 31 E and U. S. 231 and offers easy access to Interstate 65 and the Cumberland Parkway. Presently under development is the Barren River Reservoir State Park, part of whose 1,800 acres will be in Allen County, offering unlimited possibilities for recreation and hydroelectric power.

Among the distinguished citizens of Allen County is J. William Bryant, who was elected president of the Reserve Mining Company of Minnesota and became head of the Armco Steel Corporation.