

1976

Industrial Resources: Barren County - Cave City

Kentucky Library Research Collections
Western Kentucky University, spcol@wku.edu

Follow this and additional works at: https://digitalcommons.wku.edu/barren_cty

 Part of the [Business Administration, Management, and Operations Commons](#), [Growth and Development Commons](#), and the [Infrastructure Commons](#)

Recommended Citation

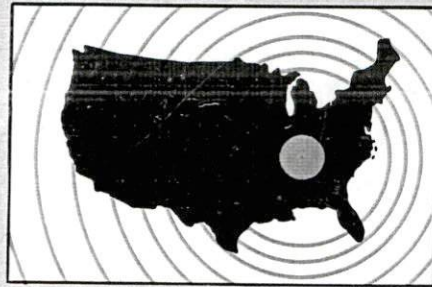
Kentucky Library Research Collections, "Industrial Resources: Barren County - Cave City" (1976). *Barren County*. Paper 7.
https://digitalcommons.wku.edu/barren_cty/7

This Report is brought to you for free and open access by TopSCHOLAR®. It has been accepted for inclusion in Barren County by an authorized administrator of TopSCHOLAR®. For more information, please contact topscholar@wku.edu.

INDUSTRIAL RESOURCES

Cave City, Kentucky

**Kentucky
first**



DEPARTMENT OF COMMERCE

INDUSTRIAL RESOURCES

CAVE CITY, KENTUCKY

Prepared by

The Kentucky Department of Commerce

in cooperation with

The Cave City Chamber of Commerce

1976

This copy has been prepared by the Kentucky Department of Commerce, Division of Research and Planning, and the cost of printing paid from state funds.

Research

Patsy Wallace

Clerical

Dorothy Tierney

Graphics

N. C. Montague

Frank Ferrante

Tony Cecconi

Cartography

Site Development Section

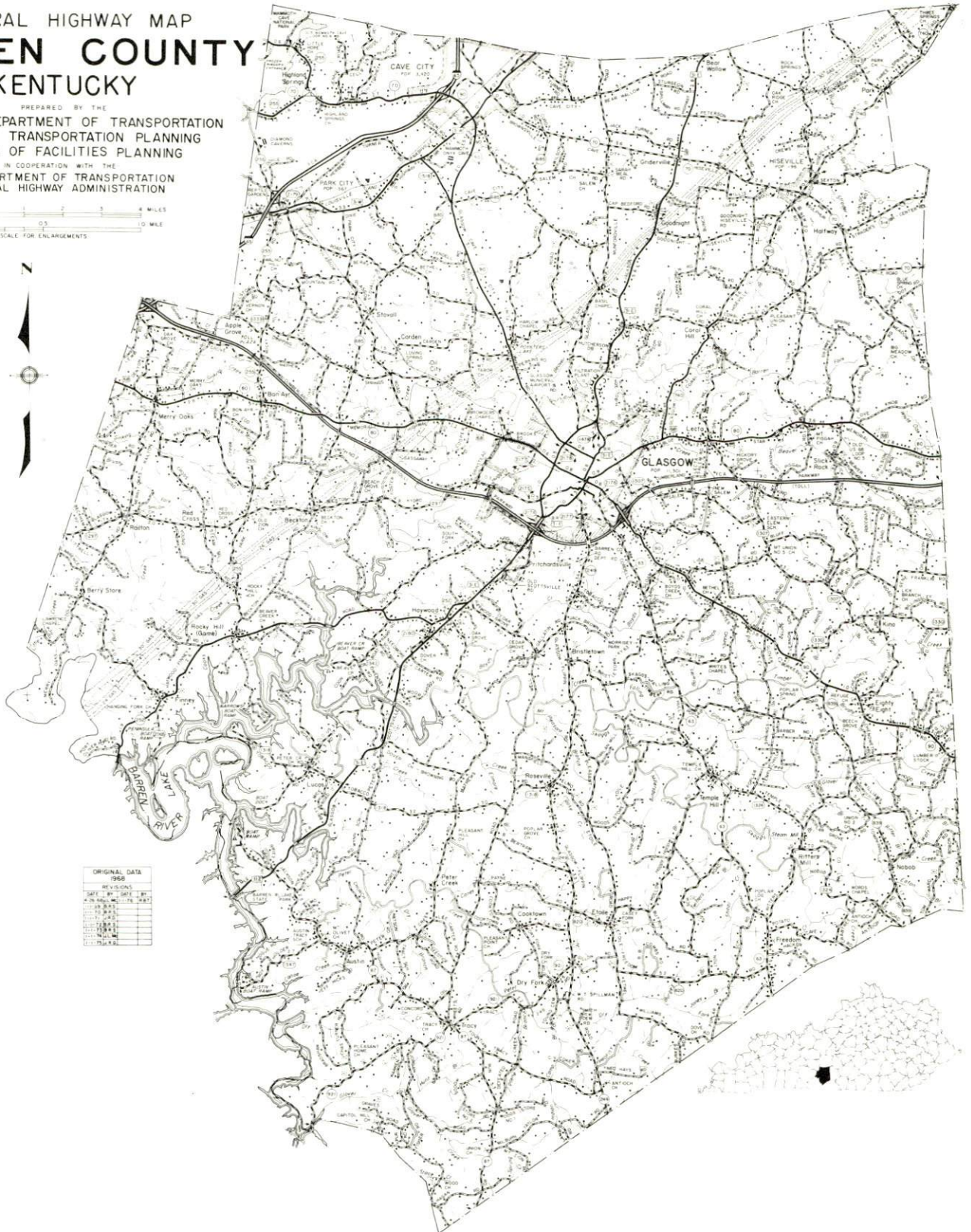
TABLE OF CONTENTS

<u>Chapter</u>	<u>Page</u>
INDUSTRIAL SITES	i
CAVE CITY, KENTUCKY - A RESOURCE PROFILE	1
THE LABOR MARKET AREA	3
Population	3
General Employment Characteristics, 1974	3
Manufacturing Employment by Industry	4
Cave City Manufacturing Firms, Their Products and Employment	4
Labor Organizations.	4
Estimated Male Labor Supply.	5
Estimated Female Labor Supply	5
Wages	6
Per Capita Personal Income	7
TRANSPORTATION	8
Rail	8
Highways.	8
Truck Service	8
Air	10
Bus	10
Taxi.	10
Rental Services	10
POWER AND FUEL	11
Electricity	11
Natural Gas	12
Other Fuels	12
WATER AND SEWERAGE.	13
Water	13
Sewerage.	14
CLIMATE.	15

<u>Chapter</u>	<u>Page</u>
LOCAL GOVERNMENT	16
City	16
County	16
Assessed Value of Property	16
Property Taxes	16
Local Property Tax Rate Per \$100 of	
Assessed Valuation, 1975	17
Planning and Zoning	17
Safety	17
Police	17
Fire	17
Rescue Service	17
Solid Waste	18
EDUCATION	19
Public Schools	19
Area Colleges and Universities	19
Vocational Schools	21
HEALTH	23
Hospitals	23
Ambulance Service	23
Nursing Homes	24
Public Health	24
OTHER LOCAL FACILITIES	25
Communications	25
Library Services	25
Religious Institutions	25
Financial Institutions	26
Hotels and Motels	26
Clubs and Organizations	26
RECREATION	27
Local	27
Area	27
COMMUNITY IMPROVEMENTS	28
HISTORY	29

GENERAL HIGHWAY MAP BARREN COUNTY KENTUCKY

PREPARED BY THE
KENTUCKY DEPARTMENT OF TRANSPORTATION
OFFICE OF TRANSPORTATION PLANNING
DIVISION OF FACILITIES PLANNING
IN COOPERATION WITH THE
U.S. DEPARTMENT OF TRANSPORTATION
FEDERAL HIGHWAY ADMINISTRATION



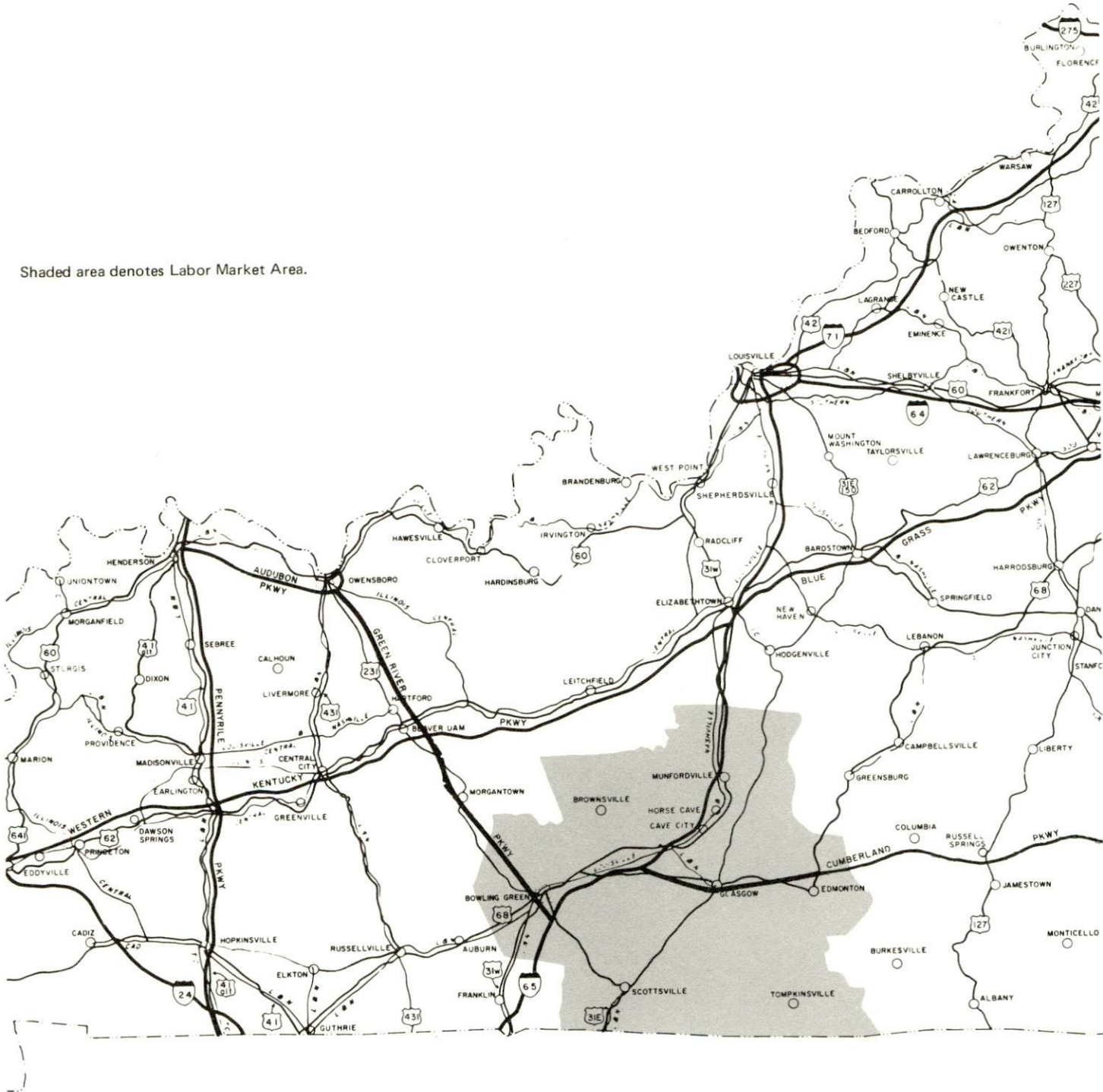
ORIGINAL DATA	
1966	
REVISIONS	
SAI	BY SAI
10	10
11	11
12	12
13	13
14	14
15	15
16	16
17	17
18	18
19	19
20	20
21	21
22	22
23	23
24	24
25	25
26	26
27	27
28	28
29	29
30	30
31	31
32	32
33	33
34	34
35	35
36	36
37	37
38	38
39	39
40	40
41	41
42	42
43	43
44	44
45	45
46	46
47	47
48	48
49	49
50	50
51	51
52	52
53	53
54	54
55	55
56	56
57	57
58	58
59	59
60	60
61	61
62	62
63	63
64	64
65	65
66	66
67	67
68	68
69	69
70	70
71	71
72	72
73	73
74	74
75	75
76	76
77	77
78	78
79	79
80	80
81	81
82	82
83	83
84	84
85	85
86	86
87	87
88	88
89	89
90	90
91	91
92	92
93	93
94	94
95	95
96	96
97	97
98	98
99	99
100	100



CAVE CITY LABOR MARKET AREA



Shaded area denotes Labor Market Area.



CAVE CITY, KENTUCKY - A RESOURCE PROFILE

Cave City, a small community of 2,031 inhabitants, is located in the heart of the Kentucky cave country, in northern Barren County. Served by rail and located 2 miles from an accessway to Interstate 65, it is midway between Louisville and Nashville. Easy access to these major cities in Kentucky and Tennessee, in addition to its proximity to Glasgow, Bowling Green, and the Mammoth Cave area, provide Cave City with many recreational advantages and a good potential for industrial growth.

Barren County, which had a 1974 estimated population of 30,500, encompasses an area of 468 square miles in the south central part of Kentucky in the Mississippian Plateau physiographic region. Barren River Lake forms the southwest boundary of the county while the northwestern tip of the county touches the Mammoth Cave National Park area.

The Economic Framework

The total number of Barren County residents employed in 1974 averaged 15,890, including 2,820 in agriculture and 1,365 in government. Manufacturing employers in the county reported 4,460 workers; trade and services firms employed 3,530. The major industrial products are clothing, axles, poultry processing, automotive parts, electrical connectors, printing, electrolytic capacitors, sonalerts, automotive wire and cable products and carburetor repair kits, and roller bearings.

Total unemployment in Barren County averaged 4.5 percent of the labor force in 1974.

Per capita personal income in the county in 1973 was \$3,668, an increase of 51.6 percent since 1969.

The Cave City labor market area includes Barren and the six adjoining counties. The total number of residents of the labor market area employed in 1974 averaged 69,360, including 9,780 in agriculture and 9,250 in government. Manufacturing employers in the labor market area reported 15,710 workers; trade and services firms employed 16,180.

Resources for Growth

1. Labor Supply - There is a current labor supply of 5,620 men and 5,910 women available for industrial jobs in the labor market area. In addition, 6,910 young men and 6,550 young women in the area will become 18 years of age before 1982 and potentially available for work.

2. Transportation - The Louisville & Nashville Railroad serves Cave City with a variety of services. There is easy access to Interstate 65, and the city is served by eight truck lines. Moore Field at Glasgow, 9 miles from Cave City via Kentucky 90, provides service for light aircraft. Commercial air service is available at Louisville, 79 miles to the north via Interstate 65.

3. Utilities and Fuel - Electric power is provided to Cave City and parts of Barren County by the Kentucky Utilities Company. The county is also served by the Farmers Rural Electric Cooperative Corporation and the Warren Rural Electric Cooperative Corporation. Natural gas service is provided to Cave City by the Western Kentucky Gas Company. Three distributors of propane and six distributors of distillate fuel oil are located in the Cave City area.

4. Education - Barren County is served by three public school systems - Caverna Independent School District, Glasgow Independent School District, and the Barren County School System. Students from Cave City attend schools in the Caverna Independent School District. Higher educational institutions within 55 miles of Cave City include one university, one senior college, one community college, and one junior college. Vocational training is available at the Bowling Green State Vocational-Technical School, 32 miles from Cave City. An area vocational education center is located at Glasgow, only 11 miles away.

THE LABOR MARKET AREA

POPULATION

Area	1974*	1970	Percent Nonwhite
			1970
Cave City	2,031**	1,818	10.6
Labor Market Area	149,500	141,709	
Barren County	30,500	28,677	6.3
Allen County	13,400	12,598	2.1
Edmonson County	9,100	8,751	2.7
Hart County	14,900	13,980	9.9
Metcalf County	8,200	8,177	3.9
Monroe County	11,800	11,642	3.5
Warren County	61,600	57,884	8.6

*Provisional Estimates.

**1973 Population Estimates.

Sources: U. S. Department of Commerce, Bureau of the Census, Census of Population, 1970. U. S. Bureau of the Census, Current Population Reports, Series P-25, No. 562, June 1975; Series P-26, No. 120, June 1975.

GENERAL EMPLOYMENT CHARACTERISTICS, 1974

Major Employment Group	Employment by Place of Residence of Workers	
	Barren County	Labor Market Area
	Total Employment	15,889
Agriculture	2,824	9,776
Government	1,365	9,246

	Employment by Location of Jobs	
	Barren County	Labor Market Area
Manufacturing	4,464	15,706
Trade and Services	3,526	16,182

Sources: Kentucky Department for Human Resources, Bureau for Administration and Operations; Kentucky Department of Commerce, 1975 Kentucky Directory of Manufacturers.

MANUFACTURING EMPLOYMENT BY INDUSTRY
MARCH 1975

<u>Industry</u>	<u>Barren County</u>	<u>Labor Market Area</u>
TOTAL	3,420	13,238
Food & Kindred Products	303	1,032
Tobacco	0	163
Apparel, Textiles, Leather	731	4,495
Lumber, Furniture	89	764
Printing & Publishing, Paper	490	684
Chemicals, Petroleum & Coal,		
Rubber	60	91
Stone, Clay & Glass	0	58
Primary Metals	0	51
Machinery, Metal Products,		
Equipment	1,747	5,886
Other	0	14

Source: Kentucky Department for Human Resources, Number of Workers in Manufacturing Industries Covered by Kentucky Unemployment Insurance Law Classified by Industry and County, March, 1975.

CAVE CITY MANUFACTURING FIRMS,
THEIR PRODUCTS AND EMPLOYMENT

<u>Firm (Establishment date)</u>	<u>Product</u>	<u>Employment</u>		
		<u>Total</u>	<u>Male</u>	<u>Female</u>
The Cave City Progress (1935)	Newspaper, job printing	1	0	1
Mammoth Cave Garment Company (1945)	Work clothing	172	23	149
Monroe Brothers Sweet Feed Mill (1955)	Feed	4	3	1
Rolco Manufacturing, Inc. (1972)	Boat trailers	30	29	1

Source: Kentucky Department of Commerce, 1976 Kentucky Directory of Manufacturers.

LABOR ORGANIZATIONS

There are presently no labor organizations representing manufacturing workers in Cave City.

ESTIMATED MALE LABOR SUPPLY
CAVE CITY LABOR MARKET AREA

Area	Current			Under- employed	Future
	Total	Not in Labor Force	Unemployed		Reaching 18 yrs. of age before 1982
Labor Market					
Area	5,620	400	1,870	3,350	6,909
Barren	970	0	440	530	1,458
Allen	370	0	190	180	542
Edmonson	240	0	130	110	443
Hart	360	0	160	200	747
Metcalfe	240	0	120	120	421
Monroe	840	400	200	240	636
Warren	2,600	0	630	1,970	2,662

Sources: Kentucky Department for Human Resources, Kentucky Labor Supply Estimates by County, 1975. Kentucky Department of Commerce, Future Labor Supply before 1982.

ESTIMATED FEMALE LABOR SUPPLY
CAVE CITY LABOR MARKET AREA

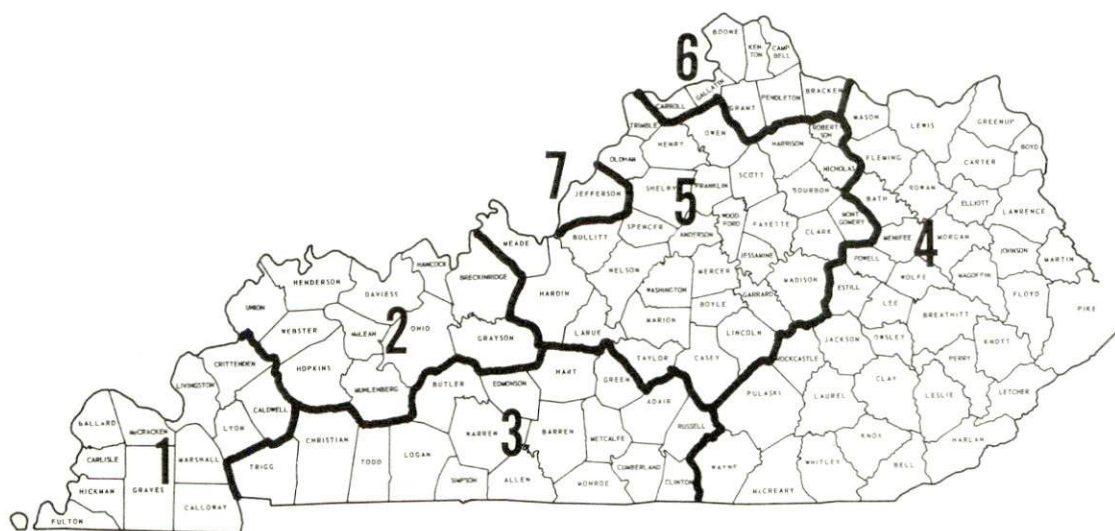
Area	Current			Under- employed	Future
	Total	Not in Labor Force	Unemployed		Reaching 18 yrs. of age before 1982
Labor Market					
Area	5,910	1,230	1,330	3,350	6,550
Barren	790	0	300	490	1,318
Allen	390	0	140	250	578
Edmonson	590	350	100	140	441
Hart	660	260	110	290	709
Metcalfe	390	240	80	70	408
Monroe	710	380	130	200	556
Warren	2,380	0	470	1,910	2,540

Sources: Kentucky Department for Human Resources, Kentucky Labor Supply Estimates by County, 1975. Kentucky Department of Commerce, Future Labor Supply before 1982.

WAGES

Occupational wage rates for specific industries are usually not available to most government agencies, and wage data furnished to state employment agencies by individual industrial employers is protected from disclosure by federal law. The most reliable up-to-date wage information can be obtained by direct contact with local employers.

Associated Industries of Kentucky, a voluntary organization of Kentucky businesses, regularly collects occupational wage rates and fringe benefits data from participating member firms. Data is compiled for over 127 clearly defined office, production, and service occupations. Tabulations are published for seven regions of Kentucky, as shown on the map below. It should be noted that the data may be weighted by the preponderance of firms in the larger cities and may be somewhat higher than the rates paid in the smaller communities. Data from these tabulations are available, upon request, from the Kentucky Department of Commerce, Frankfort, Kentucky 40601.



Associated Industries of Kentucky Area Wage Surveys

PER CAPITA PERSONAL INCOME

<u>Area</u>	<u>1973</u>	<u>1969</u>	<u>Percent Change</u>
Barren County	\$3,668	\$2,420	51.6
Labor Market Area Range	\$2,364 - 3,826	\$1,742 - 2,692	N.A.
Kentucky	4,050	2,894	39.9
U. S.	5,041	3,733	35.1

Sources: U. S. Department of Commerce, Office of Business Economics, Survey of Current Business, August, 1974. U. S. Department of Commerce, Bureau of Economic Analysis, April, 1975.

TRANSPORTATION

Rail

Line serving Cave City - Louisville & Nashville Railroad

Services - Three northbound and three southbound freight stops weekly; six northbound and six southbound through freights daily; team track space for 25 cars; switching facilities; piggyback facilities at Bowling Green, 32 miles distant

For details on routing, schedules, rates, and services, contact:

Manager of Industrial Development
Louisville & Nashville Railroad Company
908 West Broadway
Louisville, Kentucky 40203
(502) 587-5000

Highways

Cave City is served by Interstate 65, U. S. 31 W, and Kentucky Routes 90 and 70. I-65 intersects with the Cumberland Parkway and the Green River Parkway southwest of Cave City, 9 and 31 miles distant, respectively, and with the Western Kentucky Parkway and the Blue Grass Parkway, 40 miles north of the city.

Truck Service

<u>Company</u>	<u>Home Office</u>
Associated Transport, Inc.	380 Madison Avenue New York, New York 10017
Bowling Green Express, Inc.	Plum Springs Road Bowling Green, Kentucky 42101
Great Lakes Express	1105 North Niagara Street Saginaw, Michigan 48602
Manning Motor Express, Inc.	1203 South Green Street Glasgow, Kentucky 42141
McLean Trucking Company	617 Waughtown Street Winston-Salem, North Carolina 27107
Renner's Express, Inc.	1350 South West Street Indianapolis, Indiana 46206

(Cont.)

CompanyHome Office

Southern Forwarding Company

728 Alston Avenue

Memphis, Tennessee 38102

Wilson Freight Company

3636 Follett Avenue

Cincinnati, Ohio 45223

Other Freight ServicesNearest Shipping Center

United Parcel Service*

Bowling Green, 32 miles distant

HIGHWAY MILES AND TRUCK TRANSIT TIME IN DAYS FROM
CAVE CITY, KENTUCKY, TO SELECTED MARKET CENTERS

City	Highway Miles	Delivery		City	Highway Miles	Delivery	
		Time TL				Time TL	
Atlanta, Ga.	353	3		Los Angeles, Calif.	2,138	5	
Birmingham, Ala.	287	3		Louisville, Ky.	79	1	
Chicago, Ill.	380	3		Nashville, Tenn.	88	1	
Cincinnati, Ohio	192	1		New Orleans, La.	631	4	
Cleveland, Ohio	433	2		New York, N. Y.	848	4	
Detroit, Mich.	454	2		Pittsburgh, Pa.	473	3	
Knoxville, Tenn.	273	2		St. Louis, Mo.	343	3	

Source: Delivery Time Only - Bowling Green Express, Inc., Plum Springs Road, Bowling Green, Kentucky 42101.

*For regular scheduled pickups or for occasional pickups, arrangements must be made with the Louisville office of U. P. S.

Air

	<u>Nearest Local</u>	<u>Nearest Commercial*</u>
Location:	Moore Field Glasgow, 9 miles south of Cave City	Standiford Field Louisville, 79 miles northeast of Cave City
Runways:	1 paved	3 paved
Length:	4,000 feet	7,800 feet, 7,250 feet, 5,000 feet
Traffic Control:	Wind sock	Control tower: approach and ground control; guards; radar service: departure control; clearance delivery
Lighting:	Runway lights sundown to sunrise	Runways, obstructions, beacon and approach and touchdown lights, center line on runways 1-19
Services:	100 octane, jet fuel, charter, flight instruc- tion, taxi, A & E repairs, rental cars available, hangar rental, tug, auxiliary power unit	TWA, American, Eastern, Delta, Piedmont, Ozark and Allegheny Airlines; Louisville-Jefferson County Air Board; 80, 100, 115, jet fuel; storage; major A & E repairs; Hertz, Avis, and Nat'l rent-a-car service; restaurant; taxi; city bus service; Budget rent-a-car service
Air Freight Service:	Chartered air freight services must be arranged	Freight carrying airlines regularly service this terminal

Bus - Southern Greyhound Bus Lines

Taxi - 24-hour service, one company

Rental Services - Trailer rentals at Cave City; car, truck and trailer
rentals at Glasgow, 11 miles distant

*Air Kentucky Airlines (commuter air carrier) serves the Bowling Green-
Warren County Airport, 32 miles from Cave City, providing daily
connecting service to Louisville, Cincinnati, Frankfort and Owensboro.

POWER AND FUEL

Electricity

Company serving Cave City and parts of Barren County - Kentucky
Utilities Company

Source of power - Kentucky Utilities Company

Total generating capacity - 1,615,500 KW

For industrial rates contact:

Industrial Development Department
Kentucky Utilities Company
120 South Limestone Street
Lexington, Kentucky 40507
(606) 255-1461

Company serving Barren County - Farmers Rural Electric Cooperative
Corporation

Source of power - East Kentucky Power Cooperative

Total generating capacity - 496,000 KW

For industrial rates contact:

Industrial Development Division
East Kentucky Power Cooperative
P. O. Box 707
Winchester, Kentucky 40391
(606) 744-4812

and/or

Farmers Rural Electric Cooperative Corporation
504 South Broadway
Glasgow, Kentucky 42141
(502) 651-2191

Company serving Barren County - Warren Rural Electric Cooperative
Corporation

Source of power - Tennessee Valley Authority

Total generating capacity - 26,723,430 KW

For industrial rates contact:

Warren Rural Electric Cooperative Corporation
951 Fairview Avenue
Bowling Green, Kentucky 42101
(502) 842-6541

Natural Gas

Company serving Cave City - Western Kentucky Gas Company
Source of supply - Texas Gas Transmission Corporation
Size of transmission mains - 6-inch H. P. (supplier)
Distribution mains - 6, 4, and 2 inches
Distribution pressure - 10 psi summer; 20 psi winter
Btu content - 1,000 per cubic foot; Specific gravity - .60
For rates and supplies contact:

Director of Industrial Utilization
Western Kentucky Gas Company
311 West Seventh Street
Owensboro, Kentucky 42301
(502) 684-8811

Other Fuels

Propane and butane

Pargas of Glasgow
214 Industrial Drive, Glasgow 42141
Ugite Gas Incorporated
North 31-W, Horse Cave 42749
Williams Energy Company
West Main Street, Glasgow 42141

Fuel oils

Distillate fuel oil -

Virgil Taylor - distributor (Gulf)
700 West Main Street, Glasgow 42141
Tri County Oil Company, Inc. (Shell)
715 West Main Street, Glasgow 42141
Standard Oil Company
210 Leslie Avenue, Glasgow 42141
Ashland Petroleum Company
West Main and U. S. 31 bypass, Glasgow 42141
Ward Oil Company (Atlantic Richfield)
201 Leslie Avenue, Glasgow 42141
Paul Bridges Oil Company (Exxon)
Industrial Drive, Glasgow 42141

Residual fuel oil - Arrangements must be made with the refinery.

Low sulphur content coal - Available in Kentucky.

WATER AND SEWERAGE

Water

Company serving Cave City - Green River Valley Water District*
North Dixie Highway
Cave City, Kentucky 42127
(502) 773-2135

Source - Springs

Treatment plant capacity - 2,000,000 gpd

Average daily consumption - 1,000,000 gallons**

Peak daily consumption - 1,300,000 gallons**

Type treatment - Sedimentation, filtration, chlorination, flocculation

Storage capacity - 1,060,000 gallons in service area, including 60,000 gallons in Cave City

Size lines - 10, 8, and 6 inches

Average pressure - 70 psi

Average temperature - 60 degrees F.

MONTHLY WATER RATES

First	1,999 gallons	\$3.95 (Minimum bill)
	2,000 - 5,000 gallons	1.15 per M gallons
	5,000 - 10,000 gallons	1.05 per M gallons
	10,000 - 20,000 gallons	.95 per M gallons
	20,000 - 30,000 gallons	.85 per M gallons
	30,000 - 40,000 gallons	.75 per M gallons
	40,000 - 80,000 gallons	.55 per M gallons
	80,000 -	.50 per M gallons

Tap-on charge - 5/8- and 3/4-inch meters - \$175

2-inch meters - 325 (approx.)

Over 2-inch meter - cost of installation
plus cost of meter

*Planned improvements for Cave City include a new 500,000-gallon ground storage tank, new lines to replace some of the older existing lines, extension of lines into new service areas, and several new fire hydrants. The Green River Valley Water District is also planning to add two new 520 gpm pumps and a clearwell at the treatment plant. In addition to the two new pumps, the Water District will continue using two of the existing pumps - a 520 gpm pump and a 320 gpm pump.

**Overall water usage of the Green River Valley Water District service area.

Surface water sources - Barren River and Barren River Lake
Average discharge - Barren River near Finney, Kentucky, 1,466 cfs
(24-year record), unadjusted, USGS
Expected ground water yield - 50 to 200 gpm from east-west belt through
central section; 5 to 50 gpm in northern section; 5 gpm or less in
southern part of county

Sewerage

Company serving Cave City - Cave City Sewerage System
Highway 70 W
Cave City, Kentucky 42127
(502) 773-2416

Design capacity - 406,000 gpd
Average daily flow - 150,000 gallons; Treatment - Primary and secondary
Type treatment - Primary clarifier, trickling filter, secondary clarifier,
chlorine chamber, drying beds
Treated effluent discharged into - Sink hole to subterranean stream
Size of sanitary mains - 12,10, 8, and 6 inches
Rates - 80 percent of monthly water bill

Tap-on charge: Residential - \$100
Commercial - 150

CLIMATE

Barren County

Temperature

Annual mean (30-year record)	55.2 degrees
Average annual 1974	55.1 degrees
Record highest, July, 1966 (11-year record)	98.0 degrees
Record lowest, January, 1972 (11-year record)	-11.0 degrees
Normal heating degree days (30-year record) (Heating degree day totals are the sums of negative departures of average daily temperatures from 65 degrees F.)	4,729

Precipitation

Mean annual total (30-year record)	44.49 inches
Mean annual snowfall (30-year record)	15.70 inches
Total precipitation 1974	60.09 inches
Mean number days precipitation (.01 inch or more) (30-year record)	130
Average number days thunderstorms (30-year record)	47

Prevailing Winds (17-year record)

South

Relative Humidity (11-year record)

1 a. m.	76 percent
7 a. m.	81 percent
1 p. m.	59 percent
7 p. m.	64 percent

Source: U. S. Department of Commerce, Environmental Science Services Administration, Climatological Data, 1974. Station of record: Lexington, Kentucky.

LOCAL GOVERNMENT

City

Structure - Mayor - 4-year term; 6 councilmen - 2-year terms
Estimated budget 1976 - General Fund \$165,970
Income, 1975 - Water and Sewer Fund 75,491
Fees and licenses - Unloading license - \$30 annually; annual business
license - \$15 and up

County

Structure - County Judge - 4-year term; 7 magistrates - 4-year terms
Budget 1975-76 - General Fund \$644,880; Road Fund \$112,600

Assessed Value of Property

<u>Classes of Property</u>	<u>Cave City, 1974</u>	<u>Barren County, 1975</u>
Real Estate	\$12,641,684	\$212,432,568
Tangibles	2,907,878	46,566,654

Property Taxes

Land and buildings are taxed by the state and may be taxed by local jurisdictions. The state rate is \$0.015 per \$100 of assessed valuation.

Tangible personal property owned by manufacturers (automobiles, trucks, finished goods, office furniture, office equipment) is taxed by the state at \$0.15 per \$100 and may be taxed by local jurisdictions.

Manufacturing machinery, raw materials inventories, pollution control equipment and goods in process inventories are not subject to local taxation. The state rate is \$0.15 per \$100.

Property stored in public warehouses is not subject to local taxation. The state rate is only \$0.015 per \$100.

All property is assessed at 100 percent of fair cash value.

Local Property Tax Rate Per \$100 of Assessed Valuation, 1975*

<u>Taxing Jurisdiction</u>	<u>Cave City</u>	<u>Barren County</u>
County	\$.149	\$.149
School	.903	.427
City	.1875	

Planning and Zoning

Joint agency - Joint City-County Planning Commission (includes Barren County and cities of Cave City, Park City, Hiseville, and Glasgow)
 Zoning enforced - Within city of Glasgow
 Subdivision regulations enforced - Within city of Glasgow
 Local codes enforced - Building and housing codes within the city of Glasgow
 Mandatory state codes enforced - Plumbing, National Fire Protection Association Code, National Building Code (for major buildings and residential construction containing more than 12 bedrooms per building)

Safety

<u>Police</u>	<u>Cave City</u>	<u>Barren County</u>
Total staff	5	4
Radio-patrol cars	2	3

Fire

American Insurance Association Fire Rating	7
Volunteers	25

Rescue Service

Glasgow-Barren County Civil Defense Rescue Squad:
 Number of volunteers - 25
 Equipment - 14-foot flat bottom boat used for dragging, 2 jeeps, 2 trailers for hauling, 1 truck and 2 truck vans, 1 bus with kitchen facilities
 Personnel training - First aid

*Kentucky Department of Revenue, Kentucky Property Tax Rates, 1975.

Solid Waste

Type service
Fee charged:
 residential
 business
 industrial
Collection frequency:
 residential
 business
 industrial
Disposal method

Cave City

Private

\$3.25 monthly
Negotiated
Negotiated

Weekly
As needed
As needed
Sanitary landfill

EDUCATION

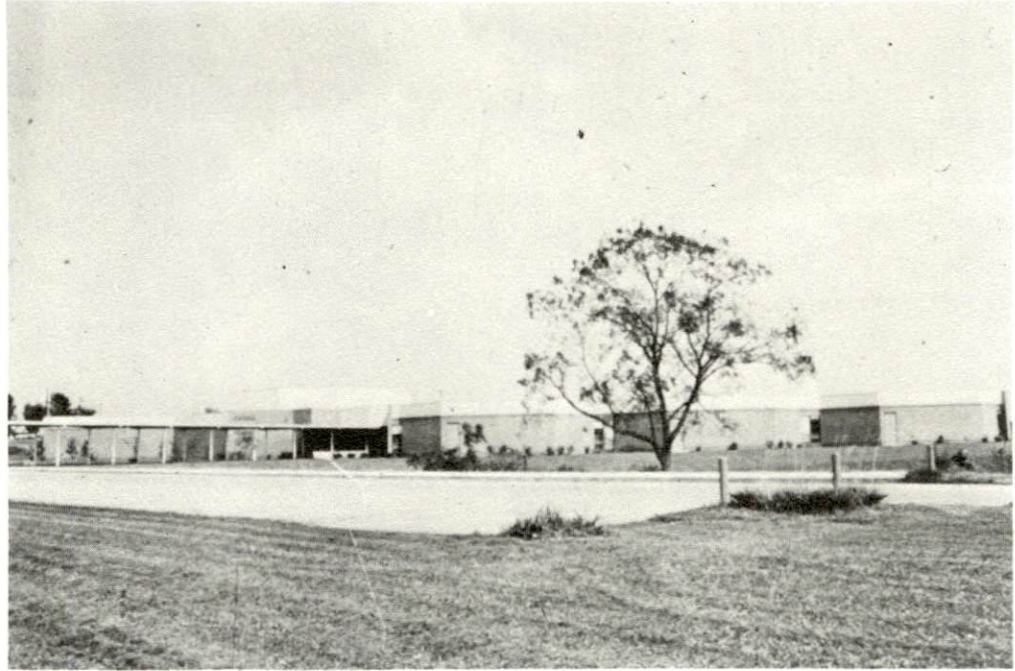
Public Schools

	<u>Caverna Independent</u>	<u>Barren County</u>
Total Enrollment (January 1976)	1,014	3,329
Elementary	490	1,694
Junior High	185	904
High School	339	731
 Student-Teacher Ratio		
Elementary	20 to 1	17 to 1
Junior High	18 to 1	14 to 1
High School	26 to 1	20 to 1
High School	21 to 1	20 to 1
 Percent High School Graduates to College	25.5	16.2
Expenditures Per Pupil (1974-75)	\$686.80	\$606.42
Bonded Indebtedness, June 30, 1975	\$1,309,000	\$1,702,000

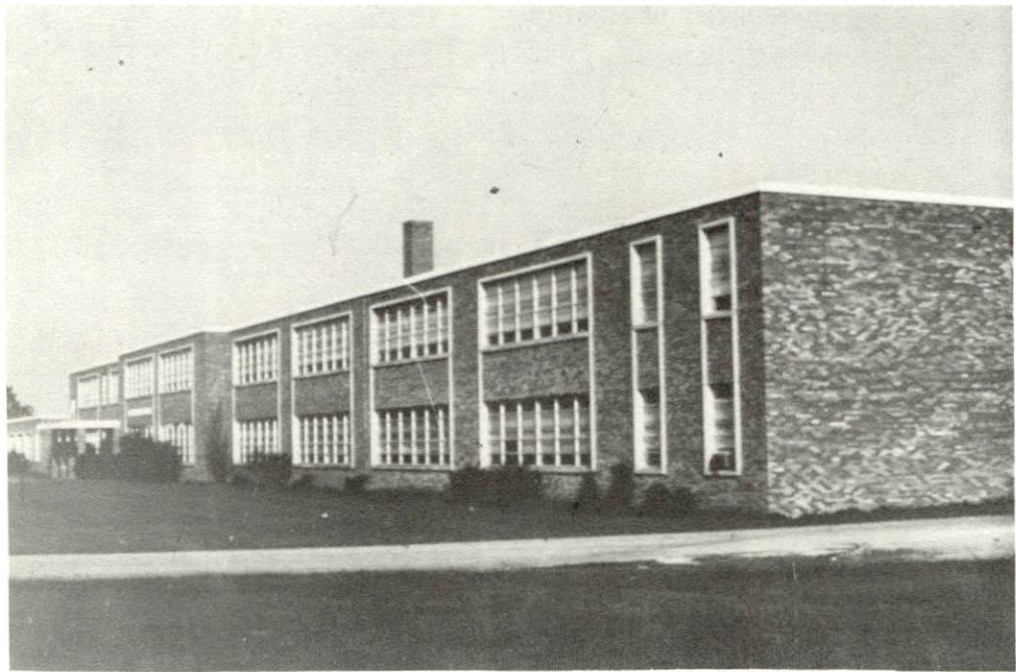
Area Colleges and Universities

<u>Name</u>	<u>Location</u>	<u>Distance (Miles)</u>	<u>Enrollment (Fall, 1975)</u>	<u>Highest Degree Conferred</u>
Western Kentucky University	Bowling Green	32	13,040	Masters, Ph. D.*
Elizabethtown Community College	Elizabethtown	42	1,345	Associate
Lindsey Wilson Junior College	Columbia	51	354	Associate
Campbellsville College	Campbellsville	51	711	Baccalaureate

*Cooperative program with the University of Kentucky, Lexington, for a Ph. D. in education only.



CAVERNA ELEMENTARY SCHOOL

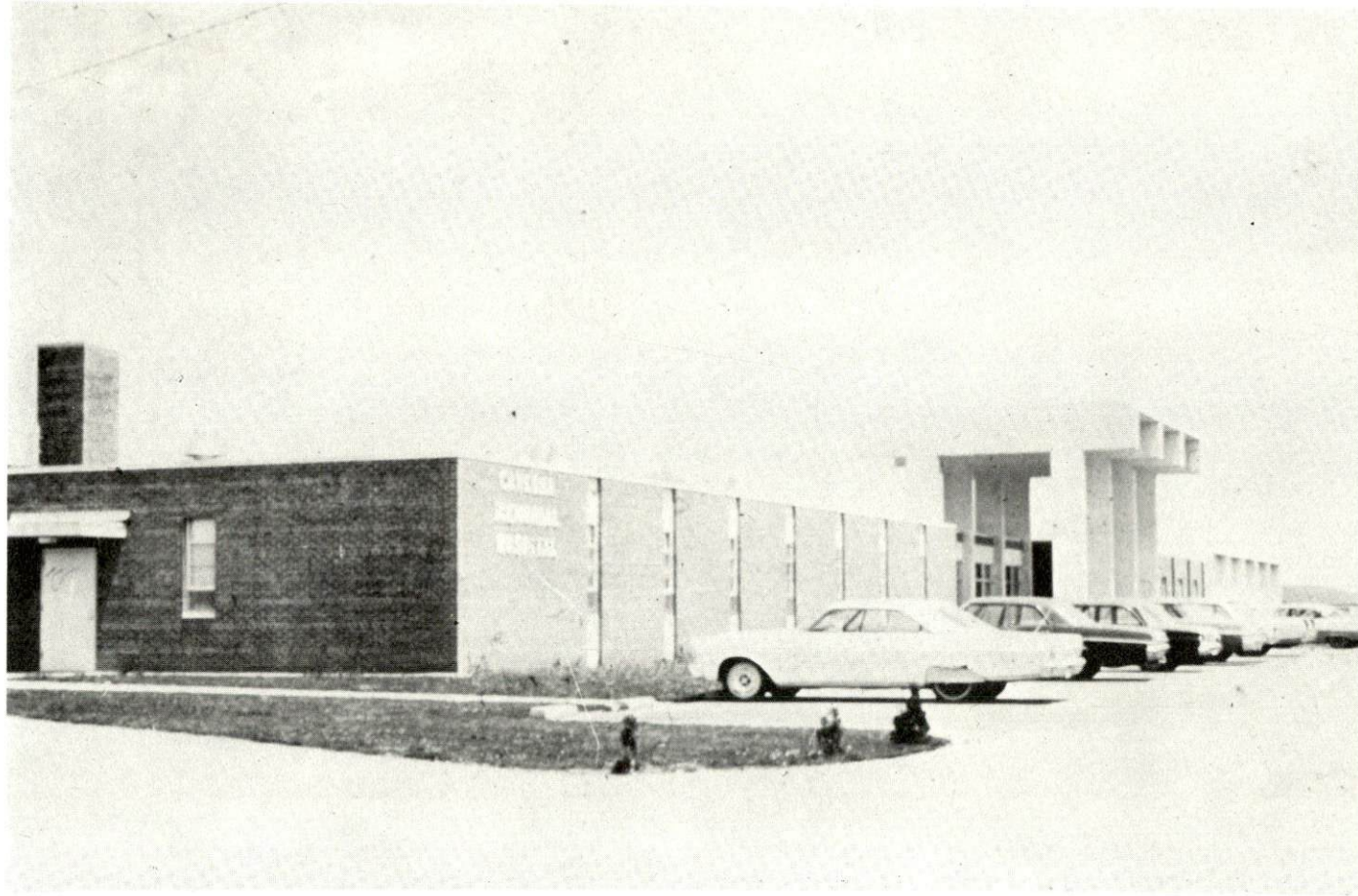


CAVERNA HIGH SCHOOL

Vocational Schools

	<u>Nearest State School</u>	<u>Nearest Area Education Center</u>
	Bowling Green State Vocational-Technical School	Barren County Vocational Education Center
Location	Bowling Green	Glasgow
Miles Distant	32	11
Curriculum	Commercial Foods Distributive Education Dental Assisting Health Careers Nursing Assistant Surgical Technician Industrial Education Air Conditioning and Heating Auto Body Repair Auto Mechanics Carpentry Civil Highway Technician Drafting Electronics (Technology) Graphic Arts (Printing) Industrial Electricity Machine Shop Masonry Radio and TV Repair Small Engine Repair Tool and Die Making Welding	Agribusiness Business and Office Health and Personal Services Industrial Education Air Conditioning and Refrigeration Auto Mechanics Building Trades Drafting Electricity Machine Shop Welding

Arrangements can be made to provide training in the specific production skills required by an industrial plant. Instruction may be conducted either in the vocational school or in the industrial plant, depending upon the desired arrangement and the availability of special equipment.



CAVERNA MEMORIAL HOSPITAL

HEALTH

Hospitals

<u>Nearest General Hospitals</u>	<u>Location</u>	<u>Beds</u>
T. J. Samson Community Hospital	Glasgow, 11 miles distant	199
Caverna Memorial Hospital	Horse Cave, 4 miles distant	30

T. J. Samson Community Hospital

General hospital information - 3 operating rooms, intensive recovery room, 3 emergency rooms, coronary care-intensive care, 2 diagnostic radiological rooms with image intensifiers and automatic film processor, nuclear medicine department, inhalation therapy department, physical therapy department, and clinical and anatomical laboratory services on the premises

Medical staff - 26 doctors, 30 registered nurses, 50 licensed practical nurses, radiologist, pathologist, psychiatrist, ophthalmologist, internist, pediatrician, neurologist, urologist, obstetrical-gynecologist, general surgery, general practice, and family practice

Caverna Memorial Hospital

General hospital facilities - Operating room, recovery room, X-ray, laboratory, emergency room, delivery room, nursery, intensive care unit, pharmacy

Medical staff - 4 medical doctors, 3 surgeons, 7 registered nurses, 7 licensed practical nurses, radiologist, pathologist, anesthetist, 3 dentists

Ambulance Service

Name - Barren-Metcalfe County Ambulance Service (based in Glasgow)

Staff - 18 attendants (full time), 1 supervisor, 1 secretary

Service - County-wide in Barren and Metcalfe Counties, 24 hours a day, 7 days a week

Equipment - 5 Medi-Cruisers (comply with all federal and state requirements) complemented with a variety of rescue equipment

Nursing Homes

<u>Barren County</u>	<u>Number</u>	<u>Beds</u>
Intermediate care homes	1	52
Personal care homes	2	98 (one home also has 70 extended care beds)

Public Health

Facility - Barren County Health Department
Staff - 2 registered nurses, 2 clerks (full time), 1 sanitarian, 1 plumbing
inspector

OTHER LOCAL FACILITIES

Communications

Telephone - South Central Rural Telephone Cooperative
Services - Standard

Postal - U. S. Post Office
Class - Second
Mail received - Twice daily
Mail dispatched - Twice daily

Newspapers - Cave City Progress
Weekly and circulation - 2,003
Other papers received from - Bowling Green and Louisville, Kentucky
(daily deliveries)

Radio - WKVE
Stations received from - Munfordville, Glasgow and Louisville, Kentucky;
Nashville, Tennessee; St. Louis, Missouri

Television -
Cable service
Reception from - Bowling Green and Louisville, Kentucky; Nashville,
Tennessee; Evansville, Indiana
Educational Television - Elizabethtown transmitter
Nashville transmitter

Library Services

The Mary Wood Weldon Memorial Branch Library in Cave City has recently moved into new quarters located in the municipal building. The branch library is open from 2 to 5 p. m. on Tuesdays and Thursdays, and from 9 a. m. to 5 p. m. on Saturdays. The book collection is supplemented and kept current by the main library in Glasgow.

Religious Institutions

Number of churches - 7
Denominations - Baptist, Christian, Church of Christ, Methodist,
Catholic

Nearest synagogues - Louisville, 79 miles distant
Congregations - Adath Israel (reform), Adath Jeshurun (conservative),
Anshei Sfard (orthodox), Brith Sholom (reform), Keneseth Israel
(orthodox)

Financial Institutions

<u>Banks</u>	<u>Assets</u>	<u>Deposits</u>	<u>Statement Date</u>
The Peoples Bank	\$ 7,501,242.66	\$ 6,791,882.72	12/31/75
Citizens Bank and Trust Company (H. Y. Davis Office)	47,333,536.90	42,011,258.28	12/31/75

Hotels and Motels

Total number	-	13
Total units	-	818

Clubs and Organizations

Business and Civic - Chamber of Commerce, Junior Chamber of Commerce, Civitan

Fraternal - Masons, American Legion

Women's - Younger Woman's Club, Senior Woman's Club, Business and Professional Women, Eastern Star

Youth - Boy Scouts, Cub Scouts, Little League

RECREATION

Local

Public recreation facilities include a golf course, two city parks, three tennis courts, two playgrounds, two baseball diamonds, two Go-cart tracks, a community center, miniature golf, a giant slide, and a supervised recreation program for the youth. Other recreation facilities include a country club with golf course and swimming pool, and a drive-in theater. Numerous tourist attractions include the House of the Past Museum, Mammoth Cave Wildlife Museum, Mammoth Cave Wax Museum, and Wondering Woods.

Area

Cave City is located in the heart of Kentucky's beautiful cave country. Renowned Mammoth Cave is but one of the many caves located within a few miles of Cave City. The national park offers guided tours through the cave, hotel accommodations, cottages, park camping, nature trails, visitor center, wildlife, tennis, shuffleboard, naturalist program, dining room, coffee shop, and gift and craft shops. Other caves in the area include Crystal Onyx Cave, Mammoth Onyx Cave, Diamond Caverns, and Jesse James Cave.

Within 40 miles of Cave City are the Barren River and Nolin River lakes, providing many water sports and activities for boaters and fishermen.

Barren River Lake State Resort Park, approximately 25 miles from Cave City, offers a resort lodge, cottages, park camping, restaurant, coffee shop, lodge pool, riding stables, nature trails, boat slips, and a 9-hole par 3 golf course.

Western Kentucky University at Bowling Green, 32 miles from Cave City, offers an array of cultural and athletic activities, including a fine arts series, a university lecture series, various musical performances, and productions by the Western Players. The Hardin Planetarium and the Kentucky Building, housing a collection of art and artifacts devoted to local and state history, are open to the public.

COMMUNITY IMPROVEMENTS

Recent:

A new radio station, WKVE, recently signed on the air. The new directional station has a power output of 250 watts and a frequency assignment of 800 kilocycles.

The branch library recently moved into new quarters located in the municipal building.

A new \$35,000-1,000 gpm pumper, a new \$800 portable pump, and a new equipment truck were recently added to the fire department equipment.

The Caverna Independent School District has added a special education unit at the high school, and has also added a kindergarten unit.

Underway:

Renovation and enlargement of The Peoples Bank is underway.

Planned:

A \$365,000 water system improvement project is planned which will include reworking older lines, increasing water supply and improving fire protection in the I-65 tourist complex, and constructing a new storage tank. Engineering has been completed and preliminary approval received.

A community development improvement project is planned which will include new curbs and sidewalks, renovation of residential sections where there are abandoned or partially destroyed buildings, and a mini park.

HISTORY

Barren County is located in the south central part of Kentucky and covers an area of 468 square miles. Barren River forms the Barren River Reservoir, a large man-made lake on the county's southwestern edge, and Beaver Creek flows through the central area. The county's northern section, which is part of the state's famous cave country, is generally hilly. The area to the south is level to rolling, with a fertile limestone-based soil and a clay subsoil.

In 1798, Barren became Kentucky's thirty-seventh county, its territory taken from Green and Warren Counties. Originally part of a great Indian hunting ground known as the "barrens region," the county was so-named because of its sparcity of timber.

Glasgow, the county seat, was established in 1799 and incorporated ten years later. It was named for Glasgow, Virginia, from which many of its early settlers came. Major John Gorin, a Revolutionary War veteran, was the first to settle there and donated land for the townsite. Alexander Spottswood, who was the first lawyer in the region, built Glasgow's first brick house. The Georgian Colonial structure was constructed from plans drawn by George Washington. One of the first state roads passed through Glasgow between Lexington and Nashville.

Cave City, to the north, is the county's second largest town. This and nearby Park City are the tourist gateways via Interstate Highway 65 to Mammoth Cave. Mammoth Cave National Park extends into Barren County and is one of the state's leading tourist attractions. Commercial facilities catering to park-bound tourists have developed rapidly in the Cave City area since the opening of Interstate 65.

In 1800, two years after its formation, Barren County had 4,784 inhabitants. This grew to 28,677 by 1970, and by 1974 population was estimated at 30,500. Glasgow's population was 11,301 in 1970 and Cave City's was 1,818. In 1973, Glasgow had an estimated population of 11,801, and Cave City had an estimated population of 2,031.

The total number of Barren County residents employed in 1974 averaged 15,890, including 2,820 in agriculture and 1,365 in government. Manufacturing employers in the county reported 4,460 workers, and trade and services firms employed 3,530. The largest manufacturing firms in Barren County are Eaton Corporation, producer of axles; Glasgow Foods,

Inc., a poultry processing firm; Glasgow Industries, manufacturing automotive parts and electrical connectors; Glasgow Manufacturing Company, Inc., manufacturer of ladies' apparel; Glasgow Manufacturing Division of R. R. Donnelley & Sons, Inc., a printing firm; Kentucky Pants Company, Inc., manufacturer of men's apparel; Mallory Capacitor Company, manufacturing electrolytic capacitors and sonalerts; Sorensen Manufacturing Company, Inc., producer of automobile ignition parts, wire and cable products, and carburetor repair kits; Tyson Bearing Company, Division of SKF Industries, Inc., manufacturer of roller bearings; and Mammoth Cave Garment Company, an apparel manufacturer.