

1975

# Industrial Resources: Bath County - Owingsville

Kentucky Library Research Collections  
Western Kentucky University, [spcol@wku.edu](mailto:spcol@wku.edu)

Follow this and additional works at: [https://digitalcommons.wku.edu/bath\\_cty](https://digitalcommons.wku.edu/bath_cty)

 Part of the [Business Administration, Management, and Operations Commons](#), [Growth and Development Commons](#), and the [Infrastructure Commons](#)

---

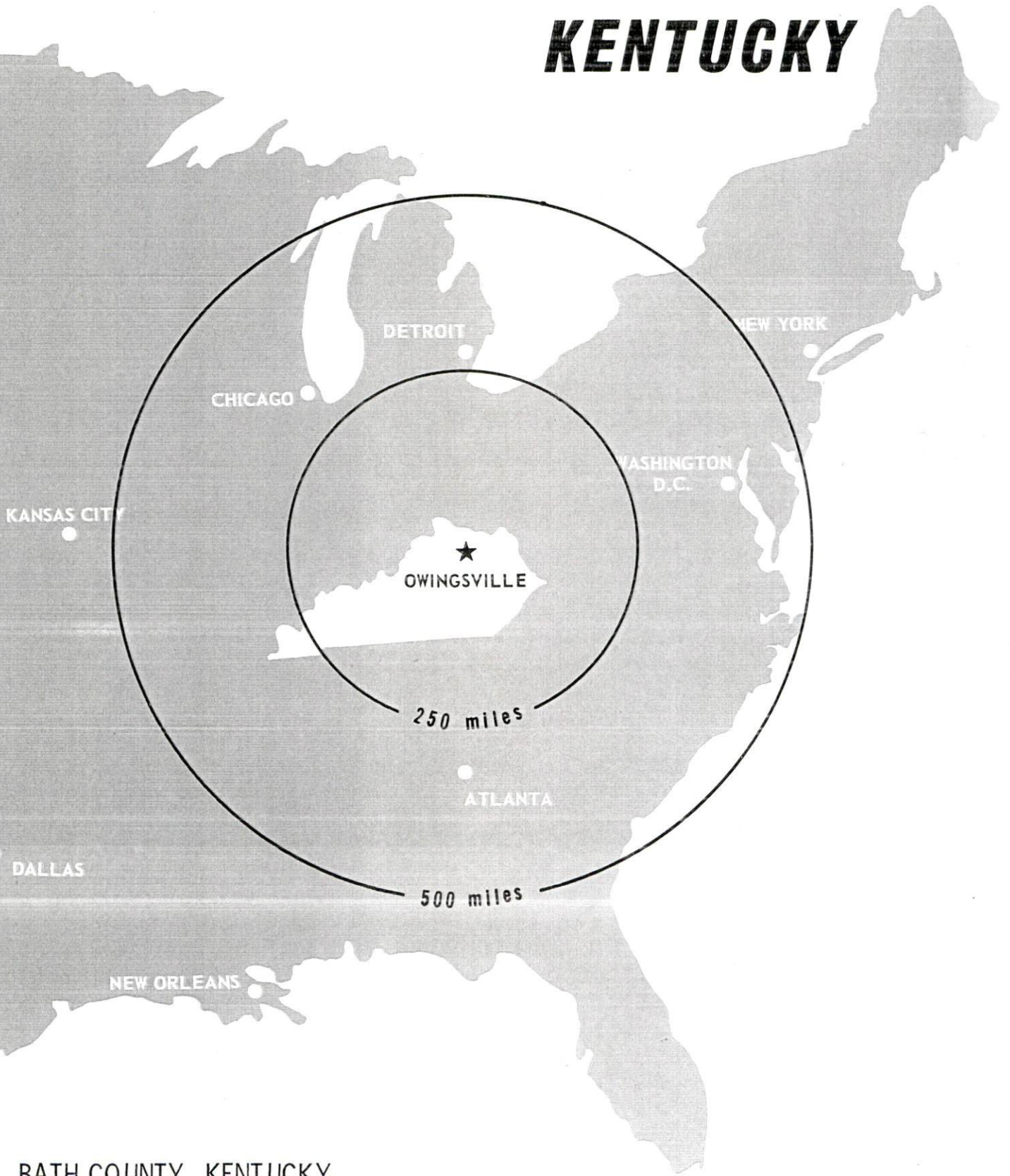
## Recommended Citation

Kentucky Library Research Collections, "Industrial Resources: Bath County - Owingsville" (1975). *Bath County*. Paper 9.  
[https://digitalcommons.wku.edu/bath\\_cty/9](https://digitalcommons.wku.edu/bath_cty/9)

This Report is brought to you for free and open access by TopSCHOLAR®. It has been accepted for inclusion in Bath County by an authorized administrator of TopSCHOLAR®. For more information, please contact [topscholar@wku.edu](mailto:topscholar@wku.edu).

# INDUSTRIAL RESOURCES

## **OWINGSVILLE KENTUCKY**



BATH COUNTY, KENTUCKY

BATH COUNTY INDUSTRIAL SITE

1974

## BATH COUNTY INDUSTRIAL SITES

1974

For additional information concerning the following sites, contact Mr. John Wills, Bath County Industrial Foundation, Owingsville, Kentucky; or the Kentucky Department of Commerce, Frankfort, Kentucky.

SITE #1: ACREAGE: 50 acres

LOCATION: In county, southwest of Owingsville

HIGHWAY ACCESS: Interchange to I-64 located  
1 mile south east of site, Kendall Springs Road  
bisects site

WATER: Owingsville Water Works

SIZE LINE: 8-inch line 3,000 feet from site,  
contract let for extension of 8-inch line to  
site

GAS: Delta Natural Gas Company

SIZE MAIN: 3-inch main 4,000 feet from site

ELECTRICITY: Kentucky Utilities Company

SEWERAGE: Owingsville Sewer Works

SIZE LINE: 8-inch line 3,000 feet from site;  
sewer plant 4,000 feet from site, contract  
let for sewerage service to site

OWNERSHIP: Bath County Industrial Foundation



SITE-1  
50 AC.

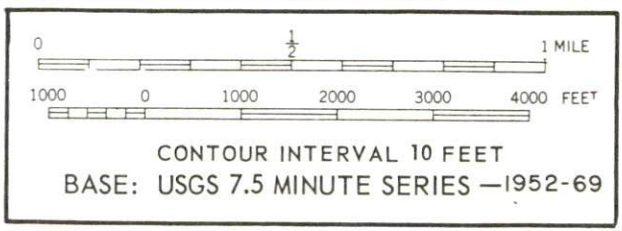
SLATE  
CREEK

Creek

OWINGSVILLE

SLATE

SLATE



# OWINGSVILLE, KENTUCKY --- Site No. 175 -- 50 Acres

For more information contact John Wills, Bath County Extension Agent, Owingsville, Kentucky 40360 or the Industrial Development Division, Kentucky Department of Commerce, Capital Plaza Tower, Frankfort, Kentucky 40601.



- LOCATION:** Approximately 0.9 mile south of the Owingsville city limits bisected by Ky. 965, the Kendall Springs Road
- ZONING:** Not zoned
- HIGHWAY ACCESS:** Interstate 64 interchange approximately 1.2 miles southeast via paved state roads
- RAILROAD:** Not rail served
- WATER:** Owingsville Water and Sewer Works  
Size Line: 8-inch line to be constructed on site along east side of Ky. 965 by January 1976; also 250,000 gallon water tank to be complete
- GAS:** Natural gas service presently not available
- ELECTRICITY:** Kentucky Utilities Company
- SEWERAGE:** Owingsville Water and Sewer Works  
Size Line: 8-inch line to be constructed on site along east side of Ky. 965 by January 1976
- OPTIONED:** Bath County Industrial Foundation

**UTILITIES**  
----- Water Line  
- - - - - Sewer Line

**SCALE:** 1 inch = 1,200 feet  
**CONTOUR INTERVAL:** 10 feet  
**BASE:** USGS 7.5 minute series - 1969

INDUSTRIAL RESOURCES  
OWINGSVILLE, KENTUCKY

Prepared by  
The Kentucky Department of Commerce  
in cooperation with  
The Bath County Industrial Foundation

1975

This copy has been prepared by the Kentucky Department of Commerce,  
Division of Research and Planning, and the cost of printing paid from  
state funds.



Production Supervisor

Patsy Wallace

Research

Terry Patterson

Clerical

Mildred Keefer

Graphics

N. C. Montague

Frank Ferrante

Tony Cecconi

Cartography

Site Development Section

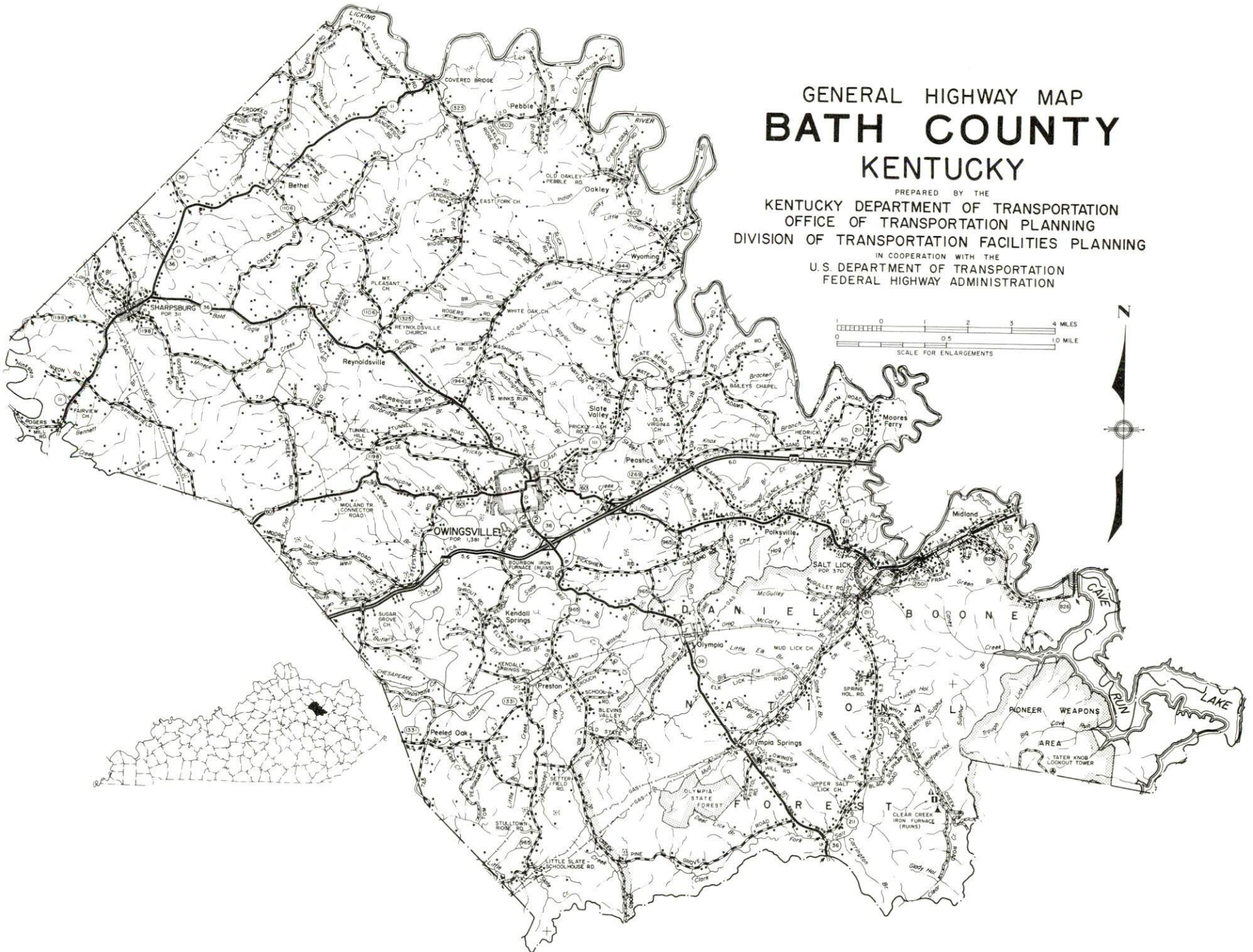
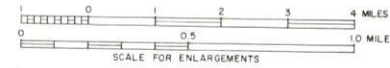
## TABLE OF CONTENTS

<u>Chapter</u>	<u>Page</u>
INDUSTRIAL SITES . . . . .	i
OWINGSVILLE, KENTUCKY - A RESOURCE PROFILE . . . . .	1
THE LABOR MARKET. . . . .	5
Population Trends . . . . .	5
General Employment Characteristics, 1973 . . . . .	5
Manufacturing Employment Trends by Industry. . . . .	6
Owingsville Manufacturing Firms, Their Products and Employment . . . . .	6
Estimated Male Labor Supply . . . . .	7
Estimated Female Labor Supply . . . . .	7
Wages. . . . .	8
Per Capita Personal Income. . . . .	9
TRANSPORTATION . . . . .	10
Rail. . . . .	10
Truck Service . . . . .	10
Air . . . . .	11
Bus . . . . .	12
Taxi . . . . .	12
Rental Services . . . . .	12
POWER AND FUEL . . . . .	13
Electricity. . . . .	13
Natural Gas . . . . .	13
Other Fuels . . . . .	14
WATER AND SEWERAGE . . . . .	15
Water. . . . .	15
Sewerage . . . . .	16
LOCAL GOVERNMENT . . . . .	17
City. . . . .	17
County . . . . .	17
Assessed Value of Property, 1974 . . . . .	17

<u>Chapter</u>	<u>Page</u>
Property Taxes . . . . .	17
Local Property Tax Rate Per \$100 of Assessed Valuation, 1974. . . . .	18
Planning and Zoning . . . . .	18
Safety . . . . .	18
Police . . . . .	18
Fire. . . . .	18
Sanitation. . . . .	19
 EDUCATION. . . . .	 21
Public Schools . . . . .	21
Vocational Schools. . . . .	21
Colleges and Universities. . . . .	22
 HEALTH . . . . .	 23
Hospitals. . . . .	23
Ambulance Service . . . . .	23
Nursing Homes . . . . .	25
Public Health . . . . .	25
 OTHER LOCAL FACILITIES . . . . .	 26
Communications. . . . .	26
Library Services . . . . .	26
Religious Institutions . . . . .	27
Financial Institutions . . . . .	27
Hotels and Motels . . . . .	27
Clubs and Organizations . . . . .	27
 RECREATION . . . . .	 29
Local . . . . .	29
Area. . . . .	29
 AGRICULTURE-NATURAL RESOURCES-CLIMATE . . . . .	 30
Agriculture. . . . .	30
Natural Resources. . . . .	30
Climate . . . . .	31
 HISTORY . . . . .	 32

# GENERAL HIGHWAY MAP BATH COUNTY KENTUCKY

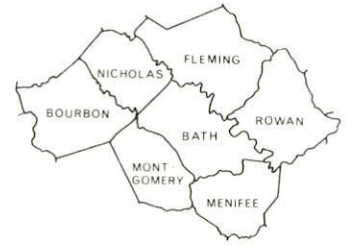
PREPARED BY THE  
KENTUCKY DEPARTMENT OF TRANSPORTATION  
OFFICE OF TRANSPORTATION PLANNING  
DIVISION OF TRANSPORTATION FACILITIES PLANNING  
IN COOPERATION WITH THE  
U.S. DEPARTMENT OF TRANSPORTATION  
FEDERAL HIGHWAY ADMINISTRATION



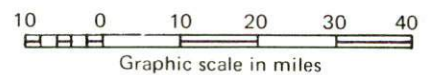
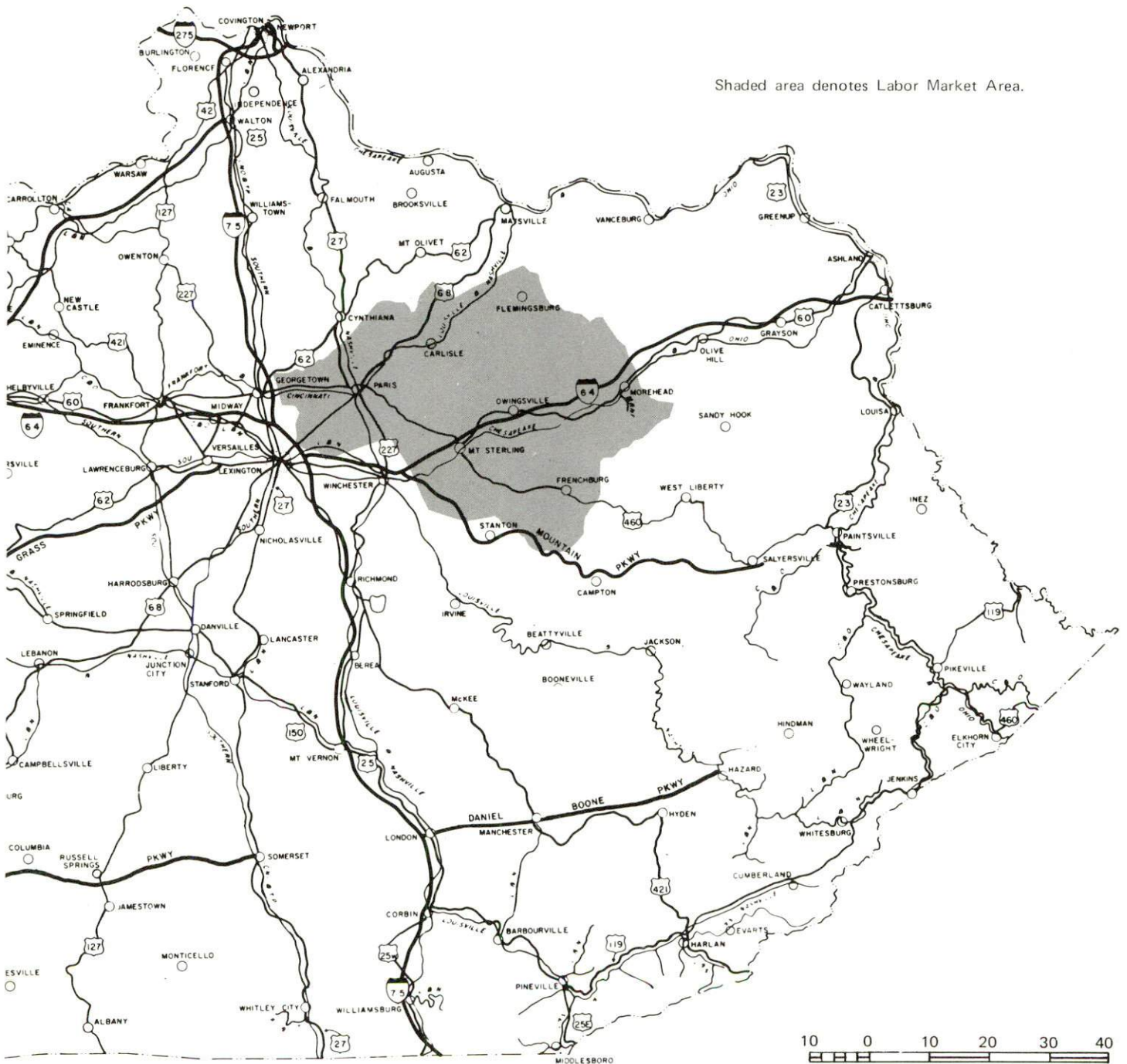


EAST MAIN STREET, OWINGSVILLE

# OWINGSVILLE LABOR MARKET AREA



Shaded area denotes Labor Market Area.



## OWINGSVILLE, KENTUCKY - A RESOURCE PROFILE

Owingsville, a 1974 All Kentucky City, is the county seat of Bath County. It is located near the center of the county 42 miles east of Lexington, 70 miles west of Ashland, and 120 miles southeast of Cincinnati, Ohio. The 1973 estimated population of Owingsville was 1,425.

Bath County covers a land area of 287 square miles and is located in the Knobs and Outer Bluegrass Regions of northeastern Kentucky. It is bounded on the east by the Licking River and the recently completed Cave Run Lake. Bath County had a 1974 estimated population of 9,500.

### The Economic Framework

Total employment in Bath County in 1973 averaged 2,840, with agriculture providing 940 jobs, trade and services 260, and government 570. At present, there are two manufacturing firms in Bath County.

Per capita personal income in the county in 1973 was \$3,094, or \$956 below the Kentucky average. Between 1969 and 1973, per capita personal income in the county increased by 54.5 percent.

The Owingsville labor market area includes Bath County and the six surrounding counties. Area employment in 1973 averaged 32,670, with agriculture providing 6,310 jobs, manufacturing 6,590, trade and services 6,730, and government 5,740. Manufacturing employment in this area has increased over 131 percent since 1964 with the sharpest gains in the apparel and electrical machinery industries.

### Resources for Growth

1. There is a current estimated labor supply of 4,410 men and 3,540 women available for manufacturing jobs in the labor market area. In addition, 3,970 young men and 3,580 young women will become 18 years of age before 1981 and potentially available for work.

2. The Chessie System provides a variety of rail services to the county. Adequate trucking service is available. Interstate 64 is 2 miles from the city and U. S. Highway 60 passes through the city. The Mt. Sterling-Montgomery County Airport, located 14 miles west of Owingsville, has one paved, 2,800-foot runway capable of accommodating light aircraft. Commercial air service is available at Blue Grass Field, Lexington, Kentucky, only 42 miles distant.

3. The Kentucky Utilities Company provides electric power to Owingsville. Clark RECC and Fleming-Mason RECC serve portions of Bath County. Natural gas is provided in Owingsville by the Delta Natural Gas Company. There are seven propane and butane distributors and seven distillate fuel oil distributors in the Owingsville area. Low sulphur content coal is available in eastern Kentucky.

4. One public school system operates within the county. Four universities, one senior college, one junior college, and a technical institute are within 60 miles of Owingsville.

The Montgomery County Area Vocational Education Center is located in Mt. Sterling, only 14 miles distant, and offers training in seven different courses. The Central Kentucky State Vocational-Technical School is located in Lexington, Kentucky, 42 miles away, and offers training in seventeen different courses.

#### Community Programs for Improvement

##### Recently completed

A new bridge and access road leading to the industrial park has been constructed.

A new 60-bed extended care facility has been added.

The city and county fire departments have each acquired a new 750 gpm pumper.

The Bath County School System has constructed three new tennis courts and an athletic track at the high school. In addition, special education classes have been added at each school, and a full-time speech and hearing specialist is now employed.

Three new businesses have opened.

The Gateway ADD is occupying new office space.

Cave Run Lake, near Owingsville, is now open to boating, swimming, fishing, and camping.

The city has added two new tennis courts and a swimming pool to its recreational facilities.



### Planned and underway

A water and sewer project, that involves the erection of a 250,000 gallon water storage tank and the extension of water and sewer lines to the industrial site, is nearing completion.

Efforts are being made to establish a medical primary care facility. The city is currently installing emergency medical equipment in space previously used as the Bath County Medical Center. Also, plans include having a doctor operate the remodeled facilities.

New sidewalks and curbs are planned for construction throughout the city.

Businessmen are uniting in an attempt to restore the downtown business section to the original Colonial and Victorian storefronts.

### Recreation, Entertainment and Livability

Owingsville annually hosts one of the finest horse shows in Kentucky. The horse show arena, surrounded by a picnic and playground area, has a seating capacity of 2,500. Preceding the horse show is Hoss Trading Day, a unique country festival.

Daniel Boone National Forest is 10 miles east of Owingsville. The forest covers one and a half million acres of timberland in eastern Kentucky. It encompasses much of Kentucky's greatest beauty and provides a vacation paradise. There are scenic hiking trails, camping sites, special hunting preserves, and rivers and streams teeming with rainbow trout.

Cave Run Lake, 12 miles from Owingsville, is a newly constructed lake covering 8,270 surface acres. Nine boat launching ramps are open along the lake and camping facilities are available.

Fort Boonesborough State Park, 38 miles southwest of Owingsville, is a 261-acre park on the site of the pioneer fort built by Daniel Boone in 1775. The park features a reconstructed fort, museum, campsites, restaurant, beach, bathhouse, boat rentals, picnic shelters and playground.

The Red River Gorge, approximately 40 miles south of Owingsville, is a spectacular wilderness area of rugged woodlands, waterfalls, limestone cliffs, sandstone arches, and scenic overlooks. Near the gorge is Natural Bridge State Resort Park, an 1,889-acre park. Natural Bridge is the largest of the 59 sandstone arches in the general area. The park also offers a swimming pool, a 54-acre lake, bathhouse, fishing, boats, hiking, horseback riding, picnic shelter, playground, and square dancing.

Carter Caves State Resort Park, approximately 45 miles northeast of Owingsville, is a 1,000-acre park located in a region abounding in rugged cliffs, mountain streams, and caves. The mountaintop lodge overlooks the 37-acre Smokey Valley Lake. Recreation includes swimming in the lodge pool and lake, boating, hiking, horseback riding, camping, golfing, and touring the many electrically lighted caves.

Blue Licks Battlefield State Park, 45 miles northwest of Owingsville, is a 100-acre park on the site of the last battle of the American Revolution. The museum contains a wide variety of historical objects and paleontological displays. The park has camping accommodations and an Olympic size swimming pool with bathhouse. There are also hiking trails, picnic shelters, and playgrounds.

## THE LABOR MARKET

### POPULATION TRENDS

Area	Population				Percent Change	
	1974*	1970	1960	1950	1960-70	1950-60
Owingsville	1,425**	1,381	1,040	929	+32.8	+12.0
Labor Market Area						
Area	84,300	82,009	75,402	78,187	+ 8.8	- 3.6
Bath County	9,500	9,235	9,114	10,410	+ 1.3	-12.4
Bourbon County	18,700	18,476	18,176	17,752	+ 1.6	+ 2.4
Fleming County	11,500	11,366	10,890	11,962	+ 4.4	- 9.0
Menifee County	4,400	4,050	4,276	4,798	- 5.3	-10.9
Montgomery County	17,100	15,364	13,461	13,025	+14.1	+ 3.4
Nicholas County	6,400	6,508	6,677	7,532	- 2.5	-11.4
Rowan County	16,700	17,010	12,808	12,708	+32.8	+ 0.8

\*Provisional estimates.

\*\*1973 estimate.

Sources: U. S. Department of Commerce, Bureau of the Census, Census of Population, 1970, 1960, 1950. U. S. Bureau of the Census, Current Population Reports, Series P-26, No. 120, June 1975; Series P-25, No. 562, June 1975.

### GENERAL EMPLOYMENT CHARACTERISTICS, 1973

Major Employment Group	Employment	
	Bath County	Labor Market Area
TOTAL	2,840	32,670
Agricultural	940	6,310
Nonagricultural	1,900	26,360
Manufacturing	20	6,593
Government	570	5,740
Trade and Services	258	6,733

Source: Kentucky Department for Human Resources, Bureau for Administration and Operations.

MANUFACTURING EMPLOYMENT TRENDS BY INDUSTRY  
SEPTEMBER 1974 AND 1964

Industry	Bath County			Labor Market Area		
	1974	1964	% Change	1974	1964	% Change
TOTAL	6	20	-70.0	7,066	3,058	+131.1
Food & Kindred						
Products	2	5	-60.0	112	221	- 49.3
Tobacco	0	0	0	1	39	- 97.4
Apparel, Textiles,						
Leather	0	0	0	3,131	1,422	+120.2
Lumber, Furniture	0	12	0	413	346	+ 19.4
Printing & Publishing,						
Paper	4	3	+33.3	74	57	+ 29.8
Chemicals, Petroleum						
& Coal, Rubber	0	0	0	10	34	- 70.6
Stone, Clay & Glass	0	0	0	48	240	- 80.0
Machinery, Metal						
Products, Equipment	0	0	0	3,257	622	+423.6
Other	0	0	0	20	77	- 74.0

Source: Kentucky Department for Human Resources, Number of Workers in Manufacturing Industries Covered by Kentucky Unemployment Insurance Law Classified by Industry and County, September, 1974, September, 1964.

OWINGSVILLE MANUFACTURING FIRMS,  
THEIR PRODUCTS AND EMPLOYMENT

Firm (Establishment date)	Product	Employment		
		Total	Male	Female
Bath County News Outlook (1879)	Newspaper, job printing	5	0	5
Kentucky Packing Company, Inc. (1962)	Meat processing	3	2	1

Source: Kentucky Department of Commerce, Division of Research and Planning.

LABOR ORGANIZATIONS

There are no labor unions representing manufacturing workers in Owingsville at this time.

ESTIMATED MALE LABOR SUPPLY  
OWINGSVILLE LABOR MARKET AREA

Area	Current			Under- employed	Future
	Total	Not in Labor Force	Unemployed		Reaching 18 yrs. of age before 1981
Labor Market					
Area	4,410	1,200	1,440	1,770	3,967
Bath	740	300	300	140	448
Bourbon	440	0	190	250	929
Fleming	480	300	70	110	536
Menifee	510	250	210	50	258
Montgomery	930	350	230	350	791
Nicholas	130	0	40	90	340
Rowan	1,180	0	400	780	665

Sources: Kentucky Department for Human Resources, Kentucky Labor Supply Estimates by County, 1973. Kentucky Department of Commerce, Future Labor Supply before 1981.

ESTIMATED FEMALE LABOR SUPPLY  
OWINGSVILLE LABOR MARKET AREA

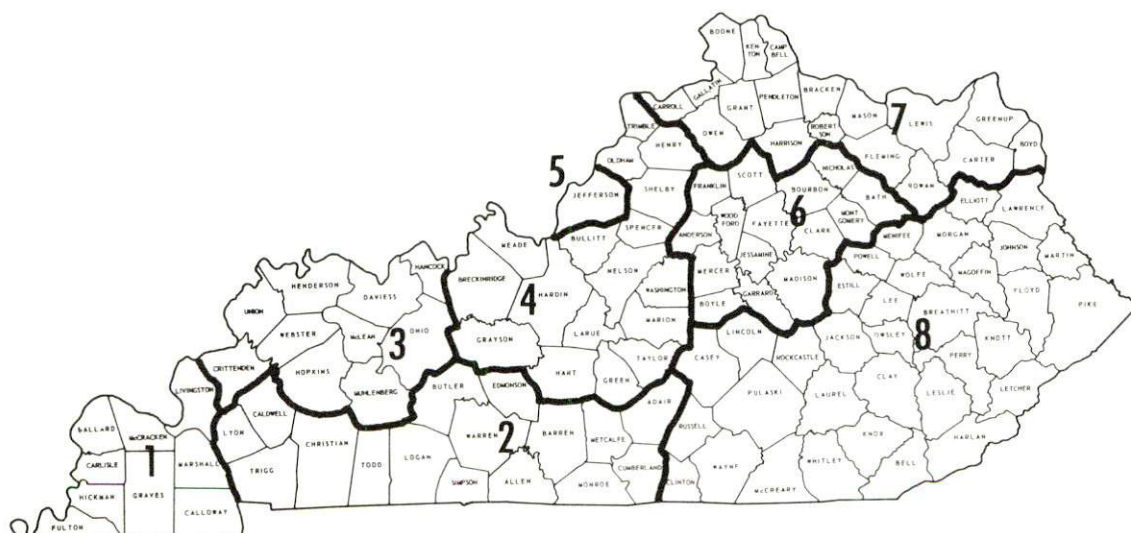
Area	Current			Under- employed	Future
	Total	Not in Labor Force	Unemployed		Reaching 18 yrs. of age before 1981
Labor Market					
Area	3,540	1,220	620	1,700	3,579
Bath	750	470	120	160	456
Bourbon	500	0	110	390	843
Fleming	530	380	40	110	489
Menifee	250	180	30	40	197
Montgomery	600	190	110	300	746
Nicholas	130	0	30	100	298
Rowan	780	0	180	600	550

Sources: Kentucky Department for Human Resources, Kentucky Labor Supply Estimates by County, 1973. Kentucky Department of Commerce, Future Labor Supply before 1981.

## WAGES

Occupational wage rates for specific industries are usually not available to most government agencies, and wage data furnished to state employment agencies by industrial employers is protected from disclosure by federal law. The most reliable up-to-date wage information can be obtained by direct contact with local employers.

Associated Industries of Kentucky, a voluntary organization of Kentucky businesses, regularly collects occupational wage rates and fringe benefits data from participating member firms. Data is compiled for over 130 clearly defined office, production, and service occupations. Tabulations are published for eight regions of Kentucky, as shown on the map below. It should be noted that the data may be weighted by the preponderance of firms in the larger cities and may be somewhat higher than the rates paid in the smaller communities. Data from these tabulations are available, upon request, from the Kentucky Department of Commerce, Frankfort, Kentucky 40601.



Associated Industries of Kentucky Area Wage Surveys

PER CAPITA PERSONAL INCOME

	<u>1973</u>	<u>1969</u>	<u>% Change</u>
Bath County	\$3,094	\$2,003	+54.5
Labor Market Area			
Range	\$4,314 - 2,242	\$3,166 - 1,690	N. A.
Kentucky	4,050	2,894	+39.9
U. S.	5,041	3,733	+35.1

Sources: U. S. Department of Commerce, Office of Business Economics, Survey of Current Business, August, 1974. U. S. Department of Commerce, Bureau of Economic Analysis, April, 1975.

## TRANSPORTATION

### Rail

Line serving Preston, 6 miles from Owingsville - The Chessie System  
Services - 2 daily eastbound and westbound through freights make stops  
when necessary; switching facilities, siding space for 50 cars; nearest  
piggyback facilities at Lexington, 42 miles distant

For details on routing, schedules, rates, and services, contact:

General Manager, Freight Service  
The Chessie System  
603 B & O Central Building  
2 North Charles Street  
Baltimore, Maryland 21201

### Truck Service

#### Company

#### Home Office

Ecklar-Moore Express, Inc.

147 South Forbes Road  
Lexington, Kentucky 40505

McLean Trucking Company

617 Waughtown Street  
Winston-Salem, North Carolina 27107

Point Express, Inc.

P. O. Box 10185, Station C  
Charleston, West Virginia 25312

#### Other Freight Services

#### Shipping Center

United Parcel Service

Clay City, 29 miles distant

REA Express

Lexington, 42 miles distant



HIGHWAY MILES AND TRUCK TRANSIT TIME IN DAYS FROM  
OWINGSVILLE, KENTUCKY, TO SELECTED MARKET CENTERS

City	Delivery		City	Delivery	
	Highway Miles	Time TL		Highway Miles	Time TL
Atlanta, Ga.	410	2	Los Angeles, Calif.	2,222	7
Birmingham, Ala.	471	2	Louisville, Ky.	114	1
Chicago, Ill.	406	2	Nashville, Tenn.	252	2
Cincinnati, Ohio	120	1	New Orleans, La.	813	3
Cleveland, Ohio	367	2	New York, N. Y.	720	2
Detroit, Mich.	379	2	Pittsburgh, Pa.	351	2
Knoxville, Tenn.	217	2	St. Louis, Mo.	377	2

Source: Delivery Time only - Point Express, Inc., P. O. Box 10185, Station C, Charleston, West Virginia 25312.

Air

	<u>Local</u>	<u>Nearest Commercial</u>
	Mt. Sterling-Montgomery County Airport	Blue Grass Field
Location:	Mt. Sterling, 14 miles west of Owingsville	Lexington, 42 miles west of Owingsville
Runways:	1 paved	2 paved
Length:	2,800 feet	6,500 and 3,500 feet
Traffic Control:	Wind sock	Tower, approach and ground control, ILS system
Lighting:	Sunset to sunrise, rotating beacon	Approach lighting system, beacon, runways and obstructions lighted
Services:	80 and 100 octane; charter service; flight instruction; tie down and hangar	Eastern, Delta, Piedmont, and Allegheny Airlines; 80, 100, and 145 octane; jet fuel; major A & E repairs; storage; restaurant; Weather Bureau and flight instruction; charter service; taxi and U-Drive-It service
Air Freight Service:	Chartered air freight services must be arranged.	Accepted on a space available basis

Bus - Greyhound Bus Lines

Taxi - One Company

Rental Services - Nearest car and truck rentals at Morehead, 20 miles distant

## POWER AND FUEL

### Electricity

Company serving Owingsville - Kentucky Utilities Company

Source of power - Kentucky Utilities Company

Total generating capacity - 1,735,000 KW

For industrial rates contact:

Director of Industrial Development

Kentucky Utilities Company

120 South Limestone Street

Lexington, Kentucky 40507

Company serving Bath County - Clark RECC

Source of power - East Kentucky Power Cooperative

Total generating capacity - 548,000 KW

For industrial rates contact:

Clark RECC

P. O. Box 748, Route 15

Winchester, Kentucky 40391

Company serving Bath County - Fleming-Mason RECC

Source of power - East Kentucky Power Cooperative

Total generating capacity - 548,000 KW

For industrial rates contact:

Fleming-Mason RECC

P. O. Drawer 328

Flemingsburg, Kentucky 41041

### Natural Gas

Company serving Owingsville - Delta Natural Gas Company

Source of supply - Columbia Gas Transmission Company

Size of transmission mains - 20 inch (supplier); 3 inch (distributor)

Distribution mains - 1, 2, and 3 inches

Distribution pressure - 5 to 16 psi

Btu content - 1,040 per cubic foot; Specific gravity - .591

For rates and supplies contact:

Delta Natural Gas Company

120 South Main Street

Winchester, Kentucky 40391

## Other Fuels

### Propane and butane

Doxol Gas of Mt. Sterling, Winchester Road, Mt. Sterling, Kentucky 40353

Eads Supply Store and LP Gas, Winchester Road, Mt. Sterling, Kentucky 40353

Bill Henderson, Inc., U.S. 60E, Morehead, Kentucky 40351

Miller Gas Company, 133 West Main, Owingsville, Kentucky 40360

Southern States Cooperative, Inc., Brooks Avenue, Owingsville, Kentucky 40360

Williams Energy Company, Winchester Road, Mt. Sterling, Kentucky 40353

Williams Energy Company, U. S. 60E, Morehead, Kentucky 40351

### Fuel oils

#### Distillate fuel oil -

Ashland Oil and Refining Company, 218 Rowan, Morehead, Kentucky 40351

Given Oil Service, 207 East Main, Mt. Sterling, Kentucky 40353

Jewell Bros. Gulf Oil, 125 South Queen, Mt. Sterling, Kentucky 40353

Smith Oil Service, U. S. 60W, Owingsville, Kentucky 40360

Standard Oil Company, 520 East Main, Mt. Sterling, Kentucky 40353

Texaco, Inc., Calk Avenue, Mt. Sterling, Kentucky 40353

Williams-Nickell Oil Company, 237 East First, Morehead, Kentucky 40351

Residual fuel oil - Arrangements must be made with the refinery.

Low sulphur content coal - Available in eastern Kentucky

## WATER AND SEWERAGE

### Water

Company serving Owingsville - Owingsville Water and Sewer Department

Source - Slate Creek

Treatment plant capacity - 368,000 gpd

Average daily consumption - 180,000 gallons

Peak daily consumption - 200,000 gallons

Type treatment - Prechlorination, coagulation, sedimentation, filtration, disinfection

Storage capacity - 75,000 gallons\*

Size lines - 4, 6, and 8 inches

Average pressure - 65 psi

### MONTHLY WATER RATES FOR WHOLESALE AND INDUSTRIAL CONSUMERS

---

First	1,000 gallons	\$2.60 Minimum charge
Next	9,000 gallons	1.00 per M gallons
Next	10,000 gallons	.80 per M gallons
All over	20,000 gallons	.60 per M gallons

Tap-on charge: New meter - \$157.50; no charge for tap-on

---

\*A 250,000 gallon storage tank is under construction.

Name of water district - Bath County Water District  
 Area served - Eastern Bath County  
 Date when water district began operating - August 1970  
 Source of supply of treated water - Morehead Utility Plant Board  
 Average amount of water used in a 24-hour period - 70,000 gallons  
 Storage capacity - 110,000 gallons  
 Average pressure - 80 psi  
 Size lines - 1, 2, 3, 6, 8 and 10 inches  
 Rates -

First	2,000 gallons	\$2.65 per M gallons
Next	3,000 gallons	1.60 per M gallons
Next	5,000 gallons	1.00 per M gallons
Next	10,000 gallons	.80 per M gallons
Next	30,000 gallons	.70 per M gallons
Next	50,000 gallons	.60 per M gallons
All over	100,000 gallons	.50 per M gallons

Tap-on charge: \$210

Surface water sources - Licking River and Cave Run Lake  
 Average discharge - Licking River at Farmers - 1,060 cfs (36 years, USGS); Cave Run Lake near Farmers - maximum contents, 257,500 acre-feet (USGS)  
 Expected ground water yield - 5 to 50 gpm along Licking River on eastern boundary; 5 gpm or less over remainder of county

#### Sewerage

Company serving Owingsville - Owingsville Water and Sewer Department  
 Design capacity - 200,000 gpd  
 Average daily flow - 142,500 gallons (est.)  
 Treatment - Primary and secondary  
 Type treatment - Trickling filter, clarifier, digester, drying beds  
 Treated effluent discharged into - Slate Creek  
 Size of sanitary mains - 8 inches  
 Size of storm mains - 10 inches  
 Rates - 50 percent of monthly water bill

Tap-on charge: \$25

## LOCAL GOVERNMENT

### City

Structure - Mayor - 4-year term; 6 councilmen - 2-year terms

Budget 1974-75 - General Fund \$42,159

Water and Sewer Fund 62,500

Fees and licenses - Occupational licenses vary from \$5 to \$200 annually

### County

Structure - County Judge - 4-year term; 3 commissioners - 4-year term

Budget 1974-75 - General Fund \$117,990; Road Fund \$49,225

### Assessed Value of Property, 1974

<u>Classes of Property</u>	<u>Owingsville</u>	<u>Bath County</u>
Real Estate	\$7,200,000	\$60,060,987
Tangibles	1,875,000	8,009,994
Public Service		25,566,704

### Property Taxes

Land and buildings are taxed by the state and may be taxed by local jurisdictions. The state rate is \$0.015 per \$100 of assessed valuation.

Tangible personal property owned by manufacturers (automobiles, trucks, finished goods, office furniture, office equipment) is taxed by the state at \$0.15 per \$100 and may be taxed by local jurisdictions.

Manufacturing machinery, raw materials inventories, pollution control equipment, and goods in process inventories are not subject to local taxation. The state rate is \$0.15 per \$100.

Property stored in public warehouses is not subject to local taxation. The state rate is only \$0.015 per \$100.

All property is assessed at 100 percent of fair cash value.

Local Property Tax Rate Per \$100 of Assessed Valuation, 1974\*

<u>Taxing Jurisdiction</u>	<u>Owingsville</u>	<u>Bath County</u>
County	\$ .167	\$ .167
School	.487	.487
City	.310	

Planning and Zoning

City agency - Owingsville Planning and Zoning Commission  
 Zoning enforced - City only  
 Subdivision regulations enforced - City only  
 Local codes enforced - Housing and building  
 Mandatory state codes enforced - Plumbing, National Fire Protection Association Code, National Building Code (for major buildings and residential construction containing more than 12 bedrooms per building)

Safety

<u>Police</u>	<u>Owingsville</u>	<u>Bath County</u>
Total staff	3	4
Radio-patrol cars	1	4

Fire

American Insurance Association Fire Rating	8	
Volunteers	26	65
Equipment:		
750 gpm pumpers	1	2
500 gpm pumpers	1	2
Utility truck	1	1
Other		Two 1,200 and one 2,000 gallon tankers with portable pumps

\*Kentucky Department of Revenue, Kentucky Property Tax Rates, 1974.



Sanitation

Owingsville

Type service

Private

Fee charged:

residential

\$3 per month

business

\$15 per month

Collection frequency:

residential

Once weekly

business

Once weekly

Trash pickup

Once weekly

Disposal method

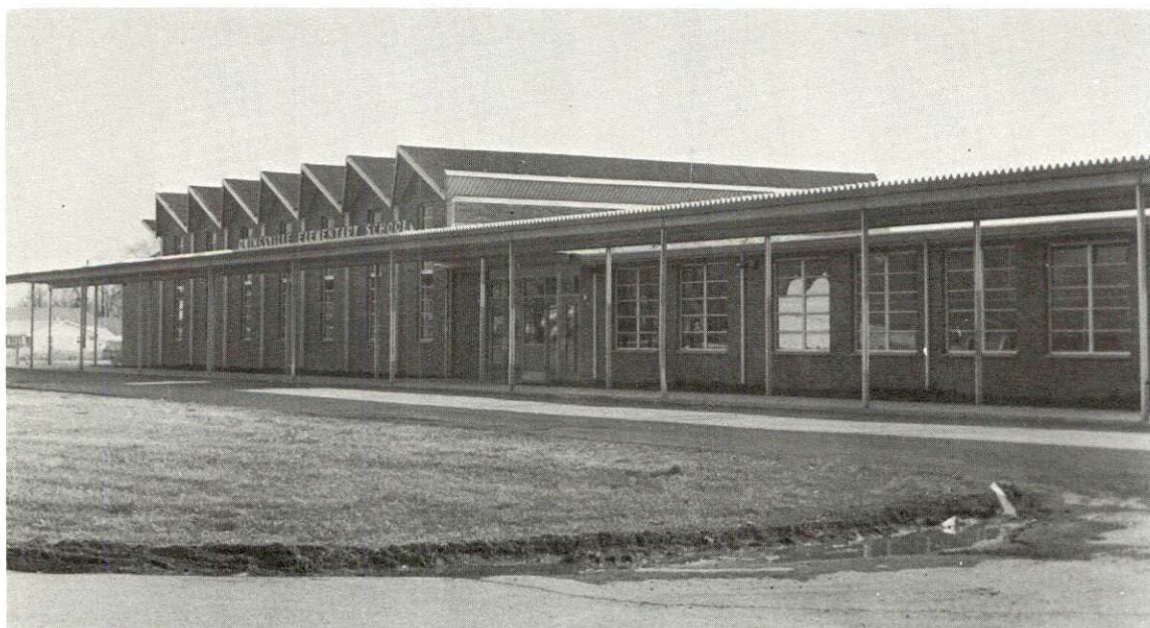
Landfill

Industrial service:

At the present time, no industries are being served. However, private collectors will negotiate terms for service.



BATH COUNTY HIGH SCHOOL



OWINGSVILLE ELEMENTARY SCHOOL

## EDUCATION

### Public Schools

	<u>Bath County</u>
Total Enrollment (1974)	2,031
Elementary	1,215
High School	816
Student-Teacher Ratio	21 - 1
Elementary	19 - 1
High School	24 - 1
Percent High School Graduates to College	27.0
Expenditures Per Pupil (1973-74)	\$579.15
Bonded Indebtedness, June 30, 1974	\$819,000

### Vocational Schools

#### Nearest State School

Location	Central Kentucky State Vocational-Technical School
Miles Distant	Lexington
Curriculum	42
	Business and Office, Practical Nursing, Learning Lab, Electronics, Technical Drafting, Auto Body Repair, Auto Mechanics, Commercial Foods, Cosmetology, Drafting, Electricity, Graphical Arts, Machine Shop, Office Machine Repair, Sheet Metal, Welding, Equine Program

#### Nearest Area Education Center

Location	Montgomery County Area Vocational Education Center
Miles Distant	Mt. Sterling
Curriculum	14
	Accounting Jr. Management, Clerical, Secretarial, Auto Mechanics, Carpentry, Drafting, Electricity

Arrangements can be made to provide training in the specific production skills required by an industrial plant. Instruction may be conducted either in the vocational school or in the industrial plant, depending upon the desired arrangement and the availability of special equipment.

Colleges and Universities

<u>Name</u>	<u>Area - Within 60 miles</u>		<u>Highest Degree Conferred</u>
	<u>Location</u>	<u>Enrollment (Fall, 1974)</u>	
Eastern Kentucky University	Richmond	12,571	Masters, Ph. D.*
Georgetown College	Georgetown	1,118	Masters
Lexington Technical Institute	Lexington	**	Associate
Morehead State University	Morehead	6,765	Masters, Ph. D.*
Southeastern Christian College	Winchester	73	Associate
Transylvania University	Lexington	664	Masters***
University of Kentucky	Lexington	21,586	Ph. D., M. D., D. M. D., J. D.

---

\*Cooperative program with the University of Kentucky, Lexington, for a Ph. D. in education only.

\*\*Included in University of Kentucky enrollment.

\*\*\*Courses are taught on the Transylvania campus by Xavier University of Cincinnati faculty members. The degrees are issued by Xavier University.

## HEALTH

### Hospitals

<u>General Hospital</u>	<u>Location</u>	<u>Beds</u>
Mary Chiles Hospital	Mt. Sterling, 14 miles distant	44
St. Claire Medical Center	Morehead, 20 miles distant	94

### Mary Chiles Hospital

General hospital facilities - X-ray room, laboratory department, emergency room, delivery room, operating room, recovery room, inhalation therapy, physical therapy, nursery

Medical staff - 9 doctors (active staff), 16 registered nurses, 8 graduate licensed practical nurses, 33 nurses aides, 4 orderlies, consulting radiologist and pathologist, surgeon, anesthesiologist, consulting dietitian, consulting pharmacist, 2 surgical technicians, 2 supply technicians

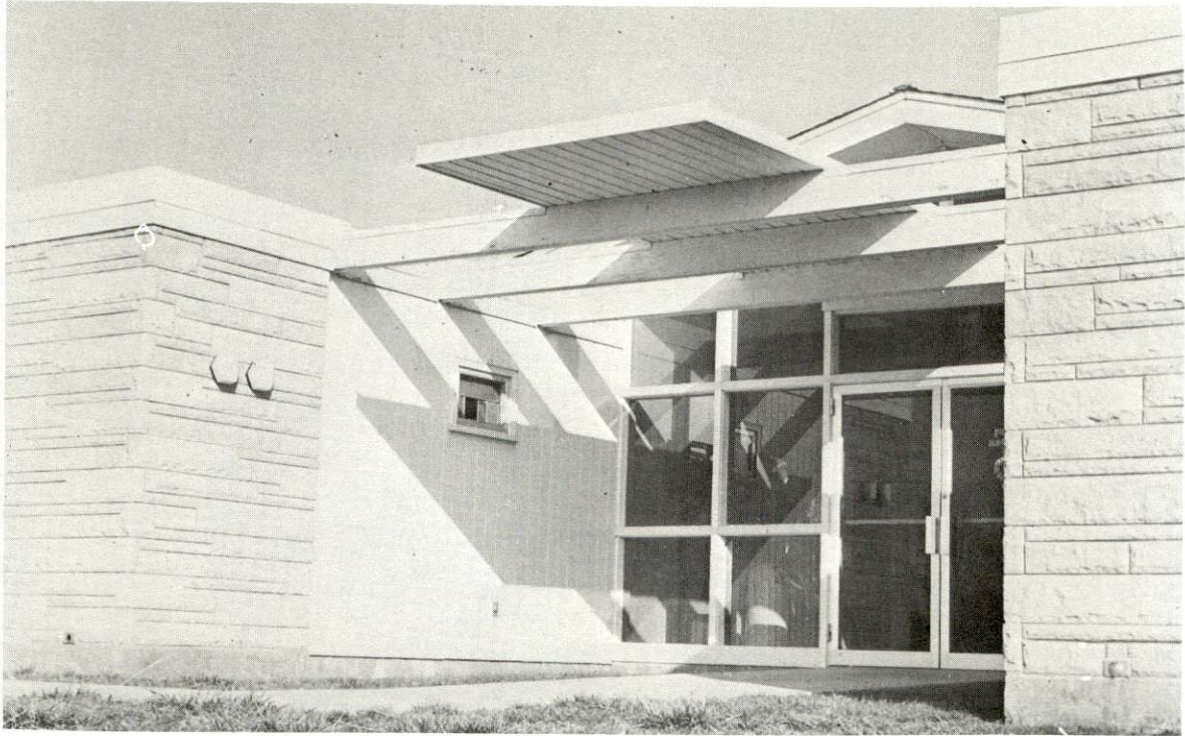
### St. Claire Medical Center

General hospital facilities and services - Emergency department, 2 X-ray rooms, EKG, laboratory, 4 operating rooms, 6 intensive coronary care beds, physical therapy, obstetrics, pediatrics, 2 delivery rooms, 9 bassinets, ladies auxiliary, teenage volunteer service, psychiatric unit, Home Health Care, 2 year nursing associate program

Medical staff - 2 surgeons, 3 internists, 4 general practitioners, 21 registered nurses, 18 licensed practical nurses, 5 lab technicians, 3 X-ray technicians, radiologist, obstetrician, urologist, anesthesiologist, orthopedist, gynecologist, psychiatrist, and 4 consulting pathologists

### Ambulance Service

Ambulance service is provided by local funeral homes.



BATH COUNTY MEDICAL CENTER



COLONIAL REST HOME, OWINGSVILLE

Nursing Homes

	<u>Number</u>	<u>Beds</u>
Intermediate care homes	2	96
Personal care homes	1	29

Public Health

Facility - Bath County Health Department

Staff - Sanitarian, registered nurse, clerk

Programs - Treatment of communicable and chronic diseases, cancer screening, nutrition program, mental health program, preschool clinic, family planning program, observation and referral, vital statistics, and a full environmental health program

## OTHER LOCAL FACILITIES

### Communications

Telephone - General Telephone Company  
Services - Standard

Postal - U. S. Post Office  
Class - Second  
Mail received - 5 times daily  
Mail dispatched - 3 times daily

Newspapers - The Bath County News Outlook  
Weekly and circulation - 2,700  
Other papers received from - Lexington, Louisville, and Mt. Sterling,  
Kentucky

Radio -  
Stations received from - Mt. Sterling, Morehead, Lexington and  
Louisville, Kentucky; Cincinnati, Ohio

Television -  
Reception from - Lexington, Kentucky; Huntington and Charleston,  
West Virginia; Cincinnati, Ohio  
Kentucky Educational  
Television - Morehead transmitter, Channel 38

### Library Services

Public library - Bath County Memorial Library  
Size collection - 16,097 volumes  
Circulation, 1973-74 - 65,179 volumes  
Services - Newspapers, magazines, periodicals, records, record players,  
slides, films and film strips, projectors, art, sports equipment, tele-  
vision set, information file material, story hour, community reading  
room, photo copy machine, Bookmobile, microfilm reader-printer



Religious Institutions

Number of churches - 9

Denominations - Baptist, Catholic, Christian, Church of Christ, Church of God, Grace Gospel Tabernacle, Methodist

Nearest Synagogues - Lexington, 42 miles distant

Congregations - Adath Israel (reform); Ohavey Zion (traditional)

Financial Institutions

<u>Banks</u>	<u>Assets</u>	<u>Deposits</u>	<u>Statement Date</u>
Farmers Bank	\$6,839,009.56	\$6,271,034.67	12/31/74
Owingsville Banking Company	6,358,077.27	5,720,698.79	12/31/74

Hotels and Motels

Total number - 3

Total units - 37

Clubs and Organizations

Business and Civic - Owingsville Chamber of Commerce, Bath County Industrial Foundation, Jaycees, Lions Club

Fraternal - American Legion, Masonic Lodge, VFW

Women's - Woman's Club, American Legion Auxiliary, Homemakers, Jaycettes, Eastern Star

Youth - Boy Scouts, Girl Scouts, Cub Scouts, Brownies, FFA, FHA, FTA, Little League, Pony League, 4-H Club

Other - Bath County Fox Hunters Club, Bath County Sportsmen's Club, Bath County Farm Bureau, Coon Hunters



FARMERS BANK, OWINGSVILLE



OWINGSVILLE BANKING COMPANY

## RECREATION

### Local

#### Public Recreation Facilities

Supervised program - Owingsville Recreation Development  
Park - 1  
Playgrounds - 2  
Swimming pool - 1  
Tennis courts - 3  
Baseball diamonds - 3  
Football field - 1  
Other - Skating rink

#### Private Recreation Facilities

Country club - 1  
Golf course - 1  
Swimming pool - 1  
Movie theater - 1 indoor  
Other - 2 tennis courts

#### Tourist Attractions

Owings Furnace - Makers of Civil War cannon balls  
Owings House  
Lions Club Horse Show (Hoss Trading Day)  
May Day Celebration  
Walnut Harvest Festival

#### Cultural Events

Morehead State University, 20 miles distant, offers concerts, lectures  
and art exhibits

### Area (Within 50 miles)

Blue Licks Battlefield State Park  
Carter Caves State Resort Park  
Cave Run Lake  
Daniel Boone National Forest  
Fort Boonesborough State Park  
Natural Bridge State Resort Park  
Red River Gorge  
Lexington, 44 miles distant, provides horse racing at the Keeneland Race  
Course and the Red Mile Trotting Track, collegiate athletics, art exhibits,  
concerts, lectures and drama productions at the University of Kentucky and  
Transylvania University.

AGRICULTURE - NATURAL RESOURCES - CLIMATE

Agriculture\*

	<u>Bath County</u>	<u>Labor Market Area</u>
Total land area (acres)	183,680	1,180,800
Percent of area in farm land	73.7	73.7
Number of farms	1,095	6,646
Average size of farms (acres)	123.5	130.9
1969 value of all farm products	\$ 6,914,537	\$ 49,275,420
Value per farm	6,314	7,414
Total crop sales	4,140,471	24,837,091
Total livestock & livestock products	2,755,631	24,267,670
1973 agricultural production included:		
Burley tobacco (lbs.) (est.)	5,153,000	31,119,000
Corn for grain (bu.) (est.)	340,300	2,886,100
Cattle and calves (number)	33,000	220,300
Hogs and pigs (number) (preliminary)	1,400	37,900
Milk production, 1972 (lbs.)	15,180,000	118,632,700

Natural Resources

Principal mineral resources	Petroleum
Other mineral resources	Limestone, sandstone, iron ore
Acres of commercial forest land	56,300
Most abundant tree species	Red oak, white oak, hickory, yellow poplar, yellow pine, beech, soft maple, ash, hard maple

\*U. S. Department of Commerce, Bureau of the Census, Census of Agriculture, 1969. U. S. Department of Agriculture and Kentucky Department of Agriculture, Kentucky Agricultural Statistics, 1973.

Climate\*

Bath County

Temperature	
Annual mean (30-year record)	55.2 degrees
Average annual 1973	56.6 degrees
Record highest, July, 1966** (10-year record)	98.0 degrees
Record lowest, January, 1972 (10-year record)	-11.0 degrees
Normal heating degree days (30-year record)	4,729
(Heating degree day totals are the sums of negative departures of average daily temperatures from 65 degrees F.)	
Precipitation	
Mean annual total (30-year record)	44.49 inches
Mean annual snow and sleet (29-year record)	15.90 inches
Total precipitation 1973	50.92 inches
Mean number days precipitation (.01 inch or more) (29-year record)	129
Average number days thunderstorms (29-year record)	47
Prevailing winds (17-year record)	South

---

\*U. S. Department of Commerce, Environmental Science Services Administration, Climatological Data, 1973. Station of record: Lexington, Kentucky.

\*\*Also on earlier dates, months, or years.

## HISTORY

Bath County, the fifty-sixth county established in Kentucky dates from 1811. The 287 square miles of land were taken from Montgomery County. Bath County lies in the Knobs and Bluegrass physiographic regions of Kentucky. One of the largest deposits of iron ore in Kentucky is found in the southeastern part of the county. Some bituminous coal beds are also found in this region.

Primarily in the vicinity of Sharpsburg, about 11 miles west of Owingsville, are found several mounds and ancient fortification sites. The remains of an enormous mastodon, housed in the Centre College Museum at Danville, were found in a pond near Sharpsburg in 1851.

The name, Bath, was inspired by the great number of mineral springs located in the county. Mud Lick, later named Olympian Springs by Henry Clay who owned an interest in them was the most famous of those springs. Three kinds of water - sulphur, salt-sulphur and chalybeate, gush from the ground. These springs, which became prominent in 1791, were used for drinking and bathing.

The first stage route ran between Olympian Springs and Lexington. Salt Lick, a few miles east of Olympian Springs, provided large amounts of salt to early settlers of eastern Kentucky. As early as 1790, an iron furnace was built on Slate Creek. Here, cannon balls weighing as much as four pounds were cast during the War of 1812. These were transported by wagon to the Licking River, put on flatboats and sent down the Ohio and Mississippi River to New Orleans for General Andrew Jackson's forces to use against the British in 1815.

Owingsville, the county seat, was established in 1811. It is located on the top of a low hill near the geographic center of the county. It had an estimated 1973 population of 1,425.

In 1850, Bath County had a population of 12,115. The population reached a high of 14,734 in 1900 before declining to 9,114 in 1960. Population increased slightly in the 1960's to 9,235 in 1970. In 1974, population of the county was estimated at 9,500.

In 1973, agriculture provided 940 of the county's 2,840 jobs. Government accounted for 570 jobs, manufacturing 20, and trade and services 260.