

1973

Industrial Resources: Bell County - Middlesboro and Pineville

Kentucky Library Research Collections
Western Kentucky University, spcol@wku.edu

Follow this and additional works at: https://digitalcommons.wku.edu/bell_cty

 Part of the [Business Administration, Management, and Operations Commons](#), [Growth and Development Commons](#), and the [Infrastructure Commons](#)

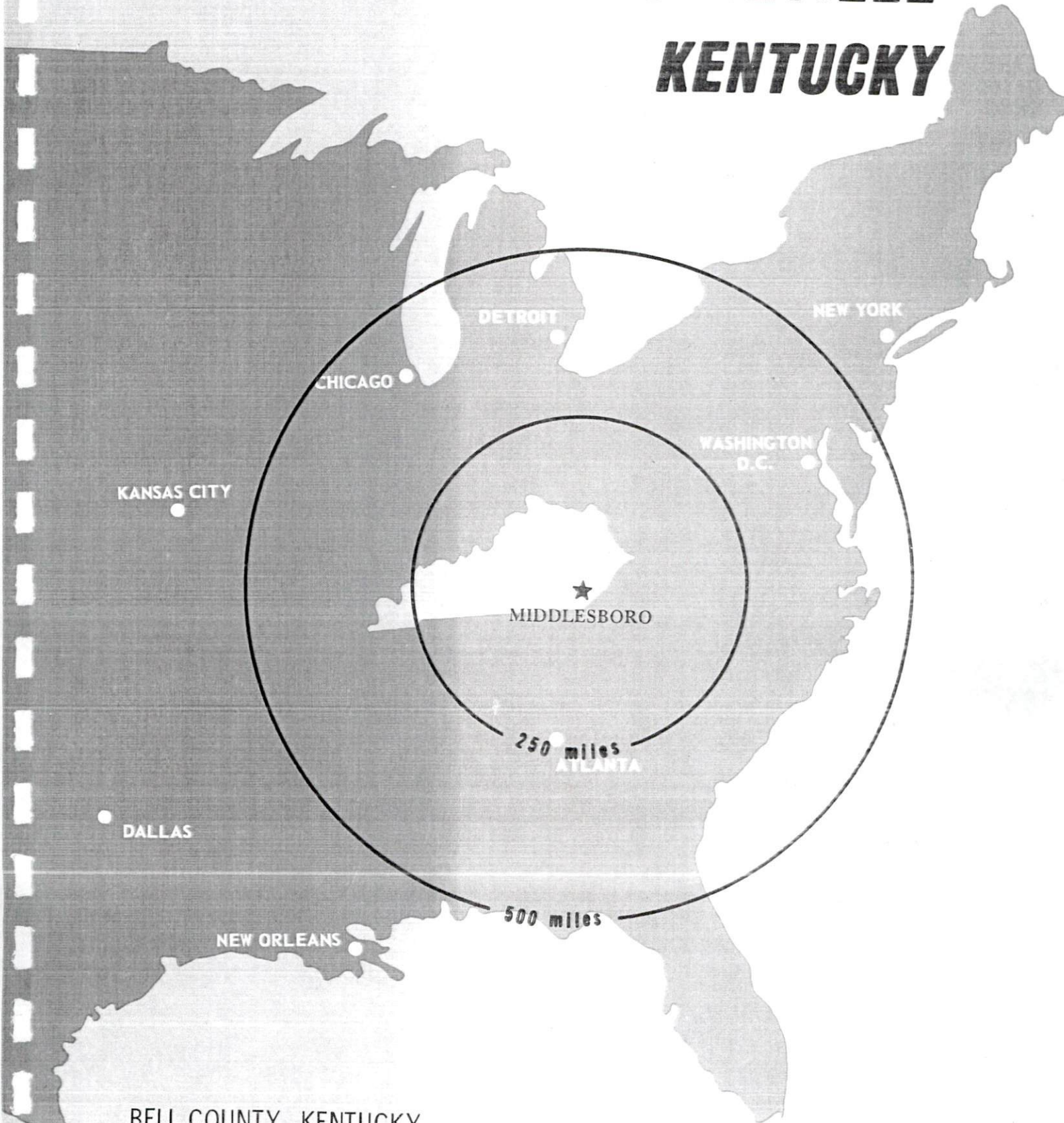
Recommended Citation

Kentucky Library Research Collections, "Industrial Resources: Bell County - Middlesboro and Pineville" (1973). *Bell County*. Paper 15.
https://digitalcommons.wku.edu/bell_cty/15

This Report is brought to you for free and open access by TopSCHOLAR®. It has been accepted for inclusion in Bell County by an authorized administrator of TopSCHOLAR®. For more information, please contact topscholar@wku.edu.

INDUSTRIAL RESOURCES

MIDDLESBORO & PINEVILLE KENTUCKY



BELL COUNTY, KENTUCKY

CURRENT INDUSTRIAL RESOURCES, MIDDLESBORO AND
PINEVILLE, KENTUCKY

This is a 1974 supplement to "Industrial
Resources, Middlesboro and Pineville,
Kentucky" which was published in 1973.

Population

	1972	1970	1960
Middlesboro	N/A	11,878	12,607
Pineville	N/A	2,817	3,181
Bell County	32,200	31,121	35,336
Labor Market Area	154,900	146,429	169,205
(Includes Clay, Harlan, Knox, Leslie, Whitley, and Bell Counties.)			

General Employment Characteristics

Industry	Employment 1972	
	Bell County	Labor Market Area
TOTAL	9,090	38,160
Agricultural	1,610	3,000
Nonagricultural	7,480	35,160
Manufacturing	1,430	4,165
Trade and Services	2,413	9,426
Government	1,750	7,910
Other	1,887	13,659

Manufacturing Employment

Type Industry	Bell County			Labor Market Area		
	Sept. 1973	Sept. 1963	%Change	Sept. 1973	Sept. 1963	%Change
TOTAL	1,549	894	73.3	4,840	2,980	62.4
Food & Kindred Products	155	148	4.7	380	572	- 33.6
Tobacco	1	1	0	3	2	50.0
Apparel, Textiles, Leather	573	124	362.1	1,437	546	163.2
Lumber, Furniture	304	287	5.9	1,482	1,038	42.8
Printing & Publishing, Paper	40	45	- 11.1	153	129	18.6
Chemicals, Petroleum & Coal, Rubber	110	58	89.7	207	58	356.9
Stone, Clay & Glass	28	54	- 48.1	126	123	2.4
Machinery & Metal Products, Equipment	338	177	91.0	1,045	506	106.5
Other	0	0	0	7	6	16.7

There are presently 27 manufacturing firms in Middlesboro and Pineville. Major firms, employment, and year started operations (employment 25 or above):

<u>Firms</u>	<u>Employment</u>	<u>Year started operations</u>
<u>Middlesboro</u>		
Coppinger Machinery	38	1967
Cumberland Gap Corporation	35	1967
Dura Line Corporation	50	1971
Excello Shirts	375	1965
Giles Industries, Inc.	203	1962
J. R. Hoe and Sons, Inc.	58	1909
Kentucky Newspapers, Inc.	29	1916
Middlesboro Coco Cola Bottling, Inc.	75	1904
Middlesboro Tanning Co. of Delaware	230	1952
Perma Pipe Corp.	38	1953
J. F. Schneider and Son, Inc.	40	1927
Tenn-Flake of Middlesboro, Inc.	190	1966
<u>Pineville</u>		
Delaware Powder Company	26	1964

Labor Supply

	<u>Bell County</u>			<u>Labor Market Area</u>		
	<u>Total</u>	<u>Male</u>	<u>Female</u>	<u>Total</u>	<u>Male</u>	<u>Female</u>
Current (1973)	5,240	2,780	2,460	26,040	13,980	12,060
Potential additions next five years	3,403	1,728	1,675	16,383	8,346	8,037

Personal Income

Bell County, 1971: Per Capita - \$2,286
1961: Per Capita - 1,047

Local Government

Property Tax Rates

Property tax rates per \$100 of assessed valuation, 1973.

	<u>Middlesboro</u>	<u>Pineville</u>	<u>Bell County</u>
State	\$.015	\$.015	\$.015
County	.226	.226	.226
School	.900	.616	.502
City	.290	.595	
Total	\$1.431	\$1.452	\$.743

PINEVILLE INDUSTRIAL SITE

1973

For more information about the following site, contact John G. Howard, First Federal Savings and Loan Association, Pineville, Kentucky 40977; or the Kentucky Department of Commerce, Capital Plaza Office Tower, Frankfort, Kentucky.

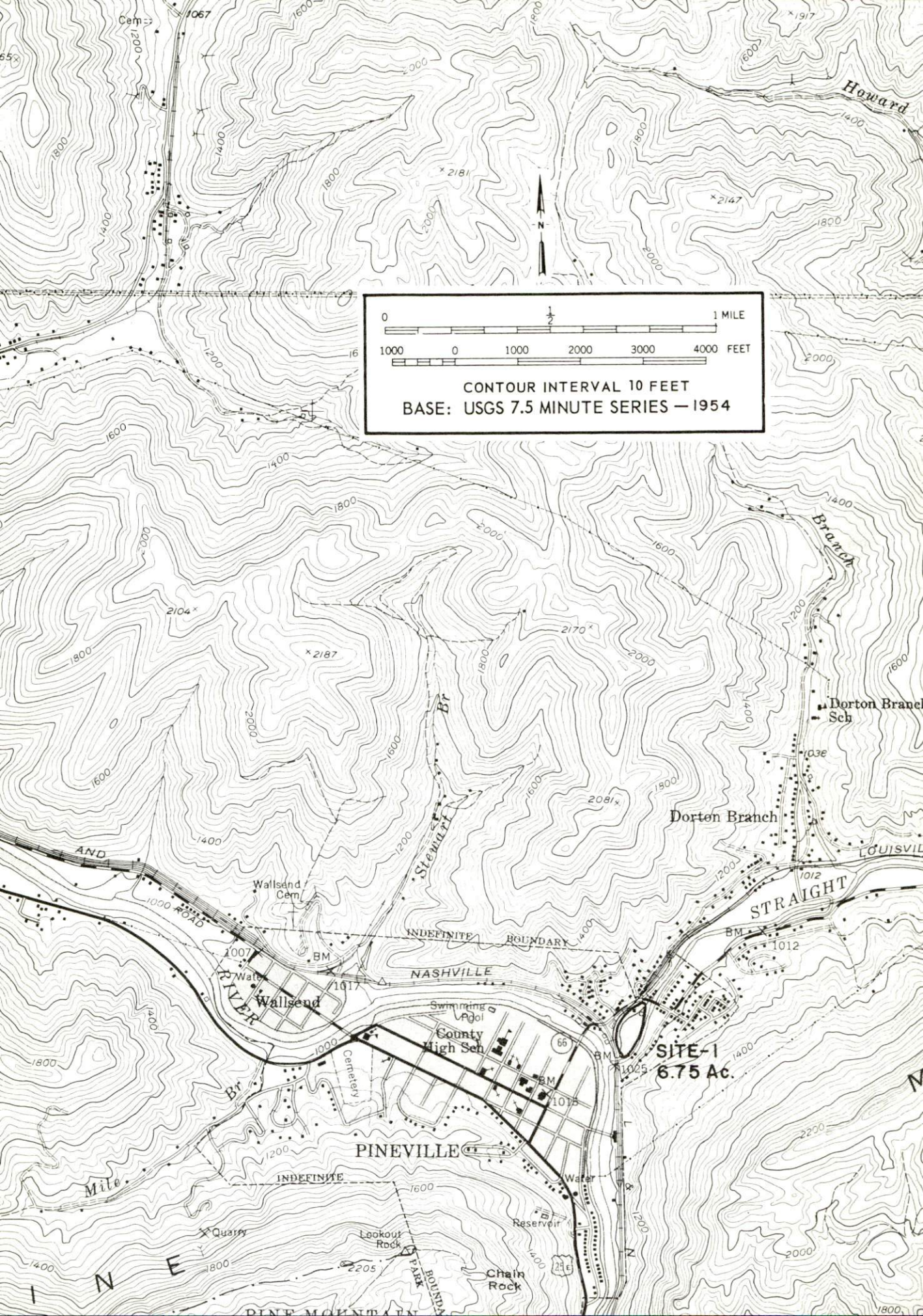
SITE # 1: ACREAGE: 6.75 acres
LOCATION: In city, northeast of Pineville proper
ZONING: Industrial
HIGHWAY ACCESS: Kentucky Highway 66 borders site
RAILROAD: Louisville & Nashville Railroad spur on site
WATER: Pineville Water Company
 SIZE LINE: 8-inch line along northwestern boundary
GAS: Pineville Gas Company
 SIZE MAIN: 6-inch main along northwest boundary
ELECTRICITY: Kentucky Utilities Company - 12.47 KV on site
SEWERAGE: Pineville Municipal Sanitation Commission
 SIZE LINE: 6-inch line along southeastern boundary
OWNERSHIP: Pineville Industrial Foundation

MIDDLESBORO INDUSTRIAL SITE

1973

For more information about the following site, contact Mr. Glenn Denham, 2121 1/2 Cumberland Avenue, Middlesboro, Kentucky; or the Kentucky Department of Commerce, Capital Plaza Office Tower, Frankfort, Kentucky.

SITE # 2: ACREAGE: 12.6 acres
LOCATION: In city, south of Middlesboro proper
ZONING: Heavy industrial
HIGHWAY ACCESS: South 23rd Street (18 blocks to U. S. 25E)
RAILROAD: Louisville & Nashville Railroad Company
Rail service available
WATER: Kentucky Water Service Company
SIZE LINE: 10-inch line along southern and western boundary
GAS: Gas Service Company
SIZE MAIN: 4-inch main adjacent to property across south
23rd Street
ELECTRICITY: Kentucky Utilities Company - 12 KV line along
north boundary
SEWERAGE: Middlesboro Sewerage Commission
SIZE LINE: 8-inch line along southern boundary
OWNERSHIP: Middlesboro Industrial Foundation



0 1 1 MILE
1000 0 1000 2000 3000 4000 FEET
CONTOUR INTERVAL 10 FEET
BASE: USGS 7.5 MINUTE SERIES — 1954

SITE-1
6.75 Ac.

PINEVILLE

NASHVILLE

Wallsend

STRAIGHT

Dorton Branch

Dorton Branch Sch

LOUISVILLE

Swimming Pool

County High Sch

Wallsend Cem

Cemetery

Reservoir

Chain Rock

Lookout Rock

Quarry

PINE MOUNTAIN

FAKES

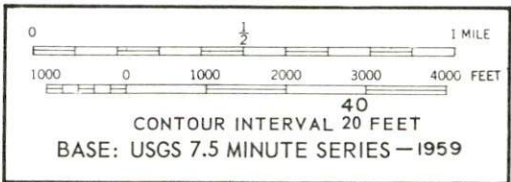
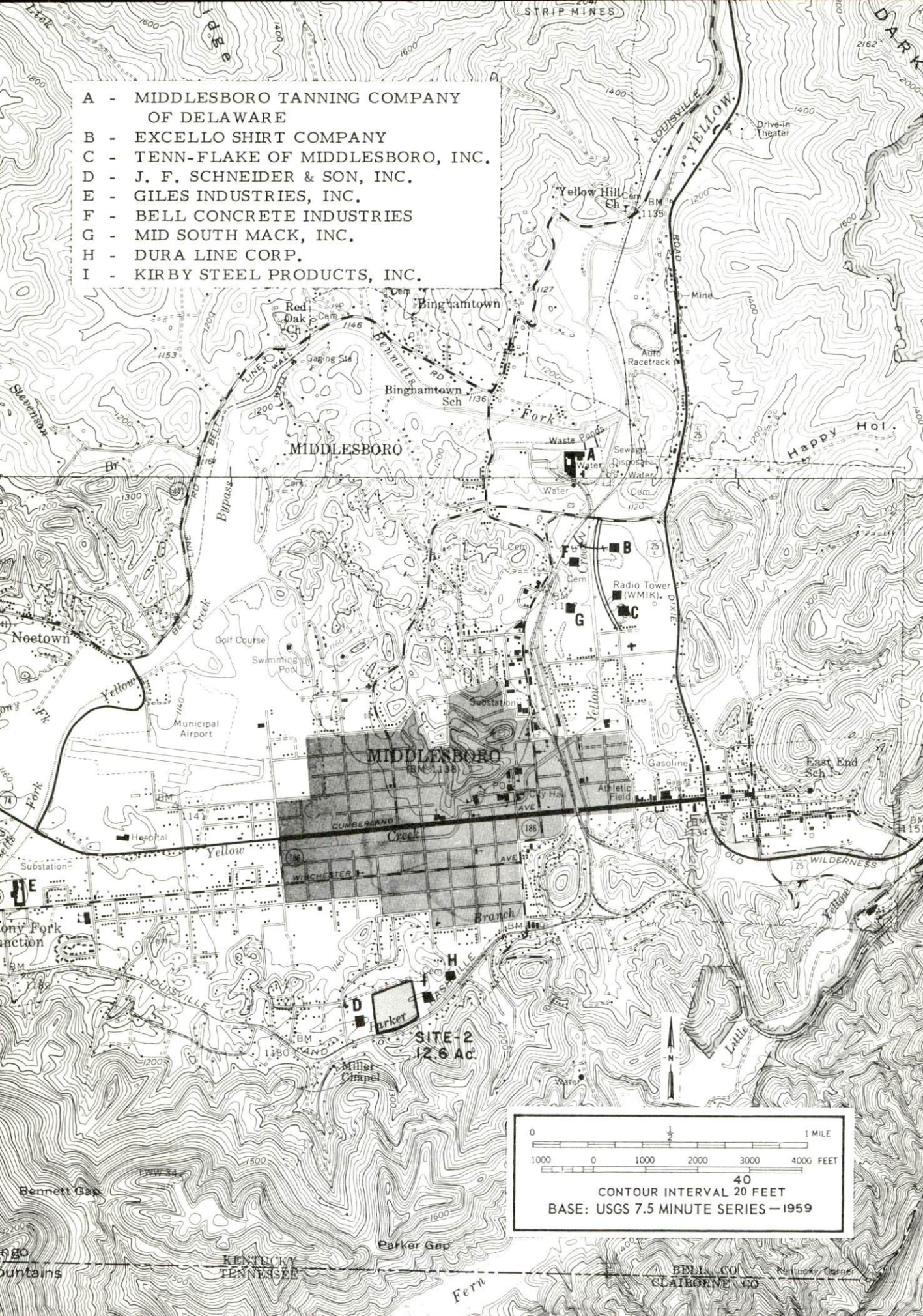
Mile

IN E

N

1800

- A - MIDDLESBORO TANNING COMPANY OF DELAWARE
- B - EXCELLO SHIRT COMPANY
- C - TENN-FLAKE OF MIDDLESBORO, INC.
- D - J. F. SCHNEIDER & SON, INC.
- E - GILES INDUSTRIES, INC.
- F - BELL CONCRETE INDUSTRIES
- G - MID SOUTH MACK, INC.
- H - DURA LINE CORP.
- I - KIRBY STEEL PRODUCTS, INC.



INDUSTRIAL RESOURCES
MIDDLESBORO AND PINEVILLE, KENTUCKY

Prepared by
The Kentucky Department of Commerce
in cooperation with
The Middlesboro Chamber of Commerce
and
The Pineville Chamber of Commerce

1973

This copy has been prepared by the Kentucky Department of Commerce,
Division of Research and Planning, and the cost of printing paid from
state funds.

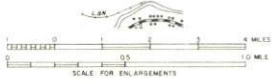
TABLE OF CONTENTS

<u>Chapter</u>	<u>Page</u>
INDUSTRIAL SITES	i
MIDDLESBORO AND PINEVILLE, KENTUCKY - A RESOURCE PROFILE	1
THE LABOR MARKET	7
Population Trends	7
General Employment Characteristics, 1971	7
Manufacturing Employment Trends by Industry	8
Middlesboro-Pineville Major Manufacturing Firms, Their Products and Employment	8
Wages	10
Labor Organizations	11
Estimated Male Labor Supply	11
Estimated Female Labor Supply	12
Per Capita Personal Income	12
TRANSPORTATION	13
Rail	13
Truck Service	13
Air	14
Bus	14
Taxi	14
Rental Services	14
POWER AND FUEL	15
Electricity	15
Natural Gas	15
Other Fuels	16
WATER AND SEWERAGE	17
Water	17
Sewerage	18
LOCAL GOVERNMENT	19
City	19
County	19

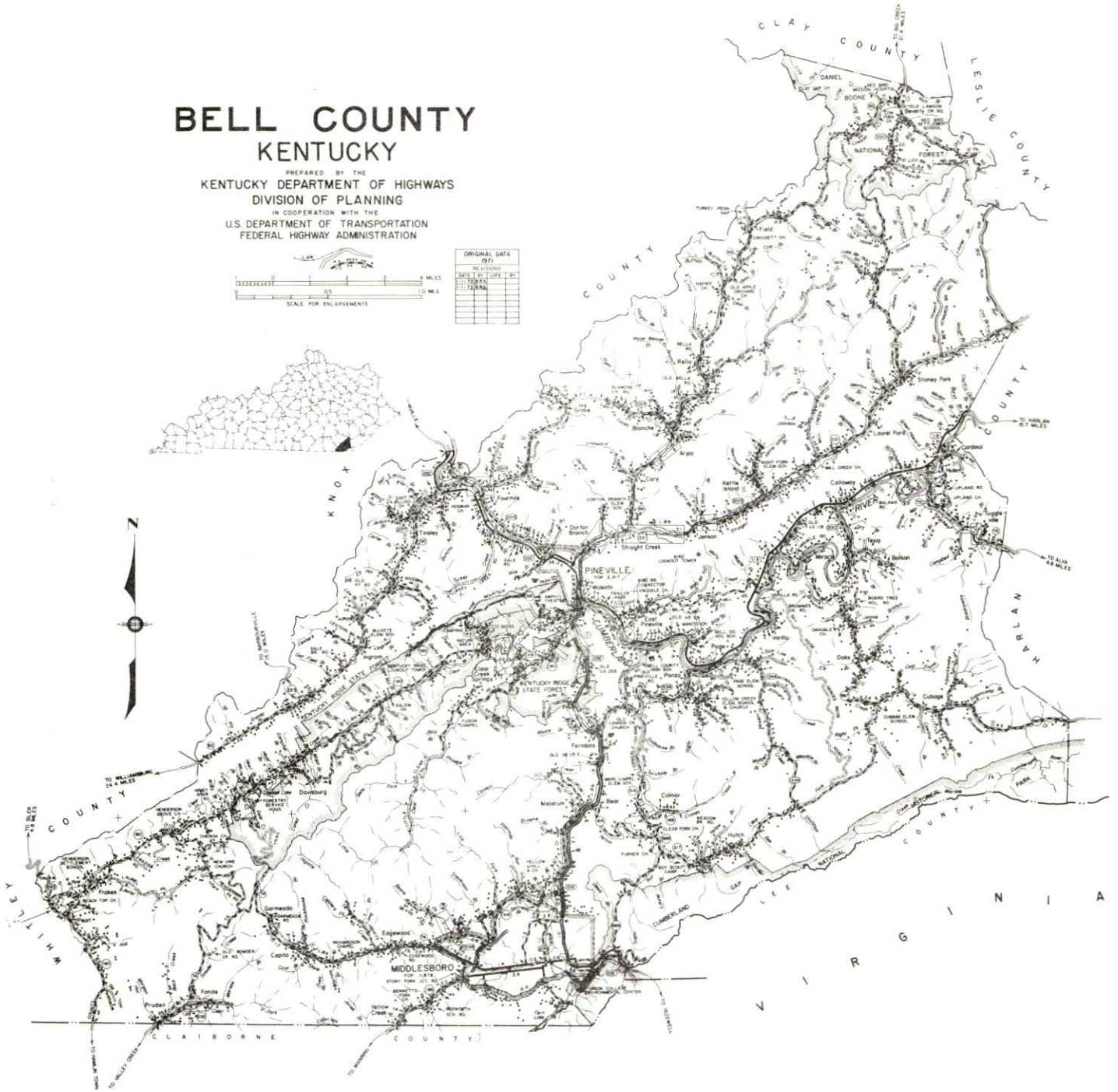
<u>Chapter</u>	<u>Page</u>
Assessed Value of Property, 1972	19
Property Taxes	19
Local Property Tax Rate Per \$100 of	
Assessed Valuation, 1972	20
Planning and Zoning	20
Safety	20
Police	20
Fire	21
Rescue Service	21
Sanitation	21
 EDUCATION	 22
Public Schools	22
Nonpublic Schools	22
Vocational Schools	23
Colleges and Universities	24
 HEALTH	 25
Hospitals	25
Nursing Homes	26
Public Health	26
 OTHER LOCAL FACILITIES	 27
Communications	27
Library Services	28
Religious Institutions	28
Financial Institutions	29
Hotels and Motels	29
Clubs and Organizations	31
 RECREATION	 32
Local	32
Area	32
 AGRICULTURE - NATURAL RESOURCES - CLIMATE	 33
Agriculture	33
Natural Resources	33
Climate	34
 HISTORY	 35

BELL COUNTY KENTUCKY

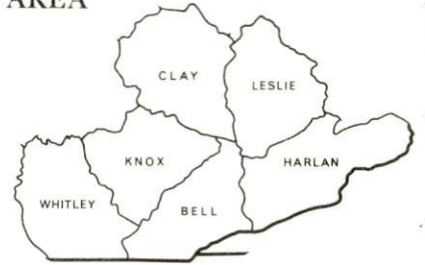
PREPARED BY THE
KENTUCKY DEPARTMENT OF HIGHWAYS
DIVISION OF PLANNING
IN COOPERATION WITH THE
U.S. DEPARTMENT OF TRANSPORTATION
FEDERAL HIGHWAY ADMINISTRATION



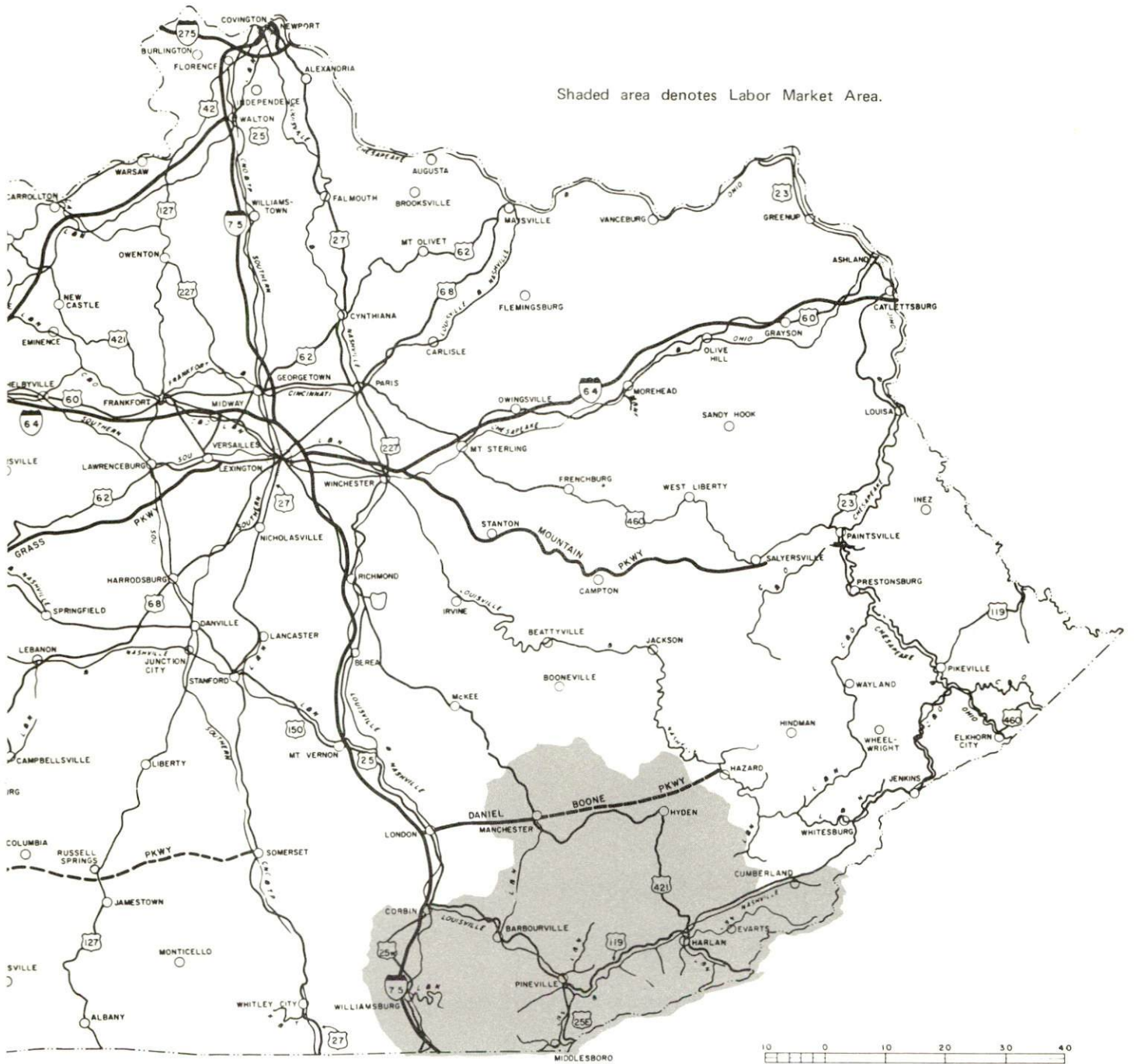
ORIGINAL DATA	DIST.
REVISIONS	BY
DATE	FILE
BY	FILE
BY	FILE
BY	FILE



MIDDLESBORO & PINEVILLE LABOR MARKET AREA



Shaded area denotes Labor Market Area.



MIDDLESBORO AND PINEVILLE, KENTUCKY - A RESOURCE PROFILE

Middlesboro, the largest city in Bell County with a 1970 population of 11,878, is situated in the southeastern portion of the state at the boundaries of Tennessee and Virginia. Middlesboro is 61 miles northeast of Knoxville, Tennessee, 132 miles southeast of Lexington, 212 miles southeast of Louisville, 213 miles southeast of the Covington-Cincinnati area, and 243 miles southwest of Ashland.

Pineville, the county seat of Bell County, is located 13 miles north of Middlesboro. In 1970, Pineville had a population of 2,817.

Bell County covers 370 square miles and is located in the Eastern Coal Field physiographic region of Kentucky. In 1970, the county had a population of 31,121.

The Economic Framework

Total employment in Bell County averaged 8,120 jobs in 1971 with agriculture providing 120, manufacturing 1,490, government 1,660 and trade and services 2,870. Between 1962 and 1972, manufacturing employment increased by nearly 64 percent or 472 jobs. Major industrial products are men's shirts, mobile homes, travel trailers, modular homes, flake board and tanned and colored leather.

Per capita personal income in the county in 1970 was \$2,084. Between 1960 and 1970, per capita personal income increased over 109 percent for the county.

The Middlesboro-Pineville labor market area includes Bell County, the five surrounding Kentucky counties, Claiborne County, Tennessee, and Lee County, Virginia. In 1971, employment in the Kentucky portion of the labor market area totaled 35,790 jobs with agriculture providing 1,600, manufacturing 4,320, government 7,740 and trade and services 10,130. Industrial employment in the Kentucky portion of the labor market area has increased nearly 100 percent between 1962 and 1972 with sharpest gains in apparel, electrical machinery and paper products.

Despite industrial gains in recent years, the labor market area still has a deficit of 9,005 manufacturing jobs when measured against the national industrial employment-population ratio. This indicates an area with the potential for additional manufacturing production.

Resources for Growth

1. There is a current estimated labor supply of 19,800 men and 16,080 women available for industrial jobs in the labor market area. In addition, 8,545 young men and 8,240 young women will become 18 years of age by 1979 and potentially available for work.

2. The Louisville and Nashville Railroad Company serves Middlesboro and Pineville with a variety of rail services. Middlesboro is also served by the Southern Railway System. Piggyback facilities are available at Knoxville and Morristown, Tennessee, 61 and 49 miles away, respectively. Six trucking lines serve Middlesboro and Pineville. Middlesboro is served by U. S. Highways 58 and 25E, while Pineville is served by U. S. Highways 119 and 25E. The London-Corbin War Memorial Airport, 62 miles north of Middlesboro and 49 miles north of Pineville, provides the area with commercial air service.

3. Kentucky Utilities Company provides electric power to Middlesboro and Pineville, and Cumberland Valley Rural Electric Cooperative Corporation serves Bell County. Middlesboro is supplied natural gas by Gas Service Company, Incorporated. Natural gas is served to Pineville by the Pineville Gas Company. Middlesboro has one propane distributor and four distillate fuel oil distributors. Pineville is served propane by two distributors and distillate fuel oil by three distributors.

4. Middlesboro and Pineville have one site each available for industrial use at this time.

5. Three public school systems operate in Bell County - the Middlesboro Independent School District, the Pineville Independent School District and the Bell County School System.

Four universities, four senior colleges, one junior college and three community colleges are within 100 miles of Middlesboro and Pineville. The Harlan State Vocational-Technical School located in Harlan, 46 miles from Middlesboro and 33 miles from Pineville, offers training in 13 areas. Two area vocational education centers are located in Pineville - the Bell County Area Vocational Education Center and the Pineville School of Practical Nursing.

Community Programs for Improvement

Middlesboro

Recent: Eighteen new businesses have opened in Middlesboro.

Eighteen businesses have expanded their facilities or remodeled their buildings.

Fifteen businesses have constructed or purchased new quarters for operation.

During the last year five streets were repaved and four streets were paved.

A new sewage treatment plant was constructed by the Middlesboro Sewage Commission which enlarged its treatment plant capacity from two to three million gallons per day.

The Middlesboro Board of Education has constructed a \$1.2 million school building for the Middlesboro Middle School.

The Middlesboro Appalachian Regional Hospital has expanded its building to include a 55-bed extended care facility.

The Daniel Boone Clinic located in Middlesboro has doubled its size by adding 10,000 square feet of floor space. The project added 18 new rooms, three departments and a variety of new equipment to the facility.

Planned: Three new businesses will soon open in Middlesboro.

Two businesses have plans to build new buildings and one business is presently under construction.

A program for the beautification of the downtown area is planned. This beautification project will include improvement of the canal area and the clean-up of city alleys, and business locations.

The Chamber of Commerce plans to move the coal house to a new location and locate its office there.

The city has plans to pave 23 unpaved streets and repave 26 streets.

Fourteen new mercury vapor lights will be added to Cumberland Avenue.

The Middlesboro Fire Department has a 1,000 gpm pumper truck on order.

The Middlesboro and Bell County Emergency Rescue Squad has plans to build a new building. The building will consist of a meeting room, kitchen, repair shops for equipment, sleeping rooms and vehicle and equipment storage area.

The Middlesboro Appalachian Regional hospital is planning a \$1.1 million expansion program. This will include remodeling of the emergency

room by adding two operating rooms, a seven bed intensive and coronary care unit, two X-ray diagnostic units, a radiographic room and a fracture and cut room.

A new library building is proposed for the Middlesboro Public Library. The building will cover 8,000 square feet and include expanded space for volumes, historical room, community room with kitchen facilities, reading room and children's room.

The city plans expansion of the civic center complex to include a multi-purpose athletic field with lights, a remodeled public swimming pool, building of a new Little League park, addition of picnic tables, grills, shuffleboard, horseshoe pits, tot lot and a horse show facility.

Pineville

Recent: Twelve new businesses have opened in Pineville.

Six businesses have renovated their buildings.

Pineville has built a 75- car municipal parking lot and five other parking lots have been constructed by businesses.

Two thousand feet of new sidewalk has been completed.

Three alleys and one-fourth mile of city streets have been paved.

City hall has undergone renovation for the fire department facility.

The fire department has a new fire truck and equipment.

Pineville has constructed a new water plant, a 260-acre reservoir, laid 28 miles of new water line, built four new water storage tanks, and installed a pressure reducing system.

The city has purchased a new garbage truck.

The Pineville and Bell County Public Library has built a new building. The facility includes a community room with kitchen facility, reading room and additional space for books. The library also purchased a new bookmobile to update its services. The bookmobile is air conditioned, holds 2,000 volumes, and has electrical equipment for records and movies.

The Bell County School System has built a new administration building, added parking facilities to many schools, extended the Bell County Vocational School facilities, expanded playground space at Lone Jack School, improved lighting at most Bell County schools, improved the water system for five Bell County schools and painting and ceiling renovation in three schools has been completed.

The Pineville Independent School District has built a new elementary school building and renovated the high school gymnasium by adding bleacher space for 300 fans and a weight room.

The Pineville Community Hospital has constructed the Ambulant Care Center for the hospital. This center provides office space for all community doctors and examination rooms for patients.

Woodward Park is a new mini-park built for the community. The facility includes a shelterhouse with restrooms, tot lot, merry-go-round, swings, slide, grills, horseshoe pits, shuffleboard, restored log cabin and is enclosed by fencing.

Eighty units of low-cost housing have been completed for Pineville.

Pineville added five new traffic lights as a result of a parking and traffic survey that was conducted for the community.

Two churches have built new parking facilities.

Kentucky Utilities Company has spent \$400,000 to build a new sub-station and doubled Pineville's power capabilities.

Planned: A new city park to continue the mini-park program.

Twelve streets will be repaved and four unpaved streets will be paved.

A new subdivision is planned.

Renovation of plumbing, heating and wiring for the courthouse is planned.

City Hall has plans to buy new equipment, panel walls, replace old lighting, and add wall to wall carpeting.

A street sweeper machine for the city will be purchased.

A new police car and radio equipment are planned for the police department.

Pineville Independent School District plans to construct a new junior high school building.

A ski-slope is proposed for Pineville in conjunction with Pine Mountain State Resort Park.

The Pineville Community Hospital plans to replace an old wing with a 25,000 square foot modern wing. The wing will have three stories and contain a new operating room.

Recreation, Entertainment and Livability

Two state resort parks, Pine Mountain State Resort Park in Pineville and Cumberland Falls State Resort Park near Corbin, are located within 70 miles of Middlesboro and Pineville. The resort parks provide facilities for lodging, swimming, horseback riding, fishing, picnicking and hiking. Pine Mountain State Resort Park hosts the famous choral drama, "The Book of Job," based on the biblical book of Job each year in July and August.

There are also two state parks, Kingdom Come State Park at Cumberland and Levi Jackson Wilderness Road State Park, near London, that are located within 70 miles of Middlesboro and Pineville. The parks have playgrounds, camping sites, hiking trails and picnic areas.

Cumberland Gap National Historical Park, located at Middlesboro and 13 miles from Pineville, is noted for its historical background and is situated at Cumberland Gap, perhaps the best known mountain pass in America. The park provides exhibits of frontier days, a museum and many scenic and panoramic views.

THE LABOR MARKET

POPULATION TRENDS

Area	Population			Percent Change	
	1970	1960	1950	1960-70	1950-60
Middlesboro	11,878	12,607	14,482	- 5.8	-12.9
Pineville	2,817	3,181	3,890	-11.4	-18.2
Labor Market Area	146,429	169,205	220,355	-13.5	-23.2
Bell County	31,121	35,336	47,602	-11.9	-25.8
Clay County	18,481	20,748	23,116	-10.9	-10.2
Harlan County	37,370	51,107	71,751	-25.9	-28.8
Knox County	23,689	25,258	30,409	- 6.2	-16.9
Leslie County	11,623	10,941	15,537	+ 6.2	-29.6
Whitley County	24,145	25,815	31,940	- 6.5	-19.2

Source: U. S. Department of Commerce, Bureau of the Census, Census of Population, 1970, 1960, 1950.

GENERAL EMPLOYMENT CHARACTERISTICS, 1971

Major Employment Group	Employment	
	Bell County	Labor Market Area
TOTAL	8,120	35,790
Agricultural	120	1,600
Nonagricultural	8,000	34,190
Manufacturing	1,490	4,320
Government	1,660	7,740
Trade and Services	2,870	10,130
Other	1,980	12,000

Source: Kentucky Department of Economic Security, Division of Research and Statistics.

MANUFACTURING EMPLOYMENT TRENDS BY INDUSTRY
MARCH 1972 AND 1962

Industry	Bell County			Labor Market Area		
	1972	1962	% Change	1972	1962	% Change
TOTAL	1,213	741	+ 63.7	4,101	2,054	+ 99.6
Food & Kindred						
Products	179	187	- 4.3	500	578	- 13.5
Tobacco	1	1	0	4	3	+ 33.3
Apparel, Textiles,						
Leather	275	147	+ 87.1	804	341	+ 135.8
Lumber, Furniture	285	254	+ 12.2	1,060	848	+ 25.0
Printing & Publishing,						
Paper	45	31	+ 45.2	694	106	+ 554.7
Chemicals, Petroleum						
& Coal, Rubber	98	57	+ 71.9	98	57	+ 71.9
Stone, Clay & Glass	37	11	+236.4	83	57	+ 45.6
Machinery, Metal						
Products, Equip.	293	53	+452.8	853	58	+1,370.7
Other	--	--	--	5	6	- 16.7

Source: Kentucky Department of Economic Security, Number of Workers in Manufacturing Industries Covered by Kentucky Unemployment Insurance Law Classified by Industry and County, March 1972, March 1962.

MIDDLESBORO-PINEVILLE MAJOR MANUFACTURING FIRMS,
THEIR PRODUCTS AND EMPLOYMENT

Firm	Product	Employment		
		Total	Male	Female
<u>Middlesboro</u>				
Cumberland Gap Corporation	Lumber, chips, pallet materials	51	51	0
Excello Shirt Company	Men's shirts	345	25	320
Giles Industries, Inc.	Mobile homes, travel trailers, and modular homes	203	197	6
J. R. Hoe and Sons, Inc.	Coal mining equipment, gray iron castings, fabricated structural steel	58	56	2
Middlesboro Coca Cola Bottling, Inc.	Soft drinks	66	62	4

(cont'd.)

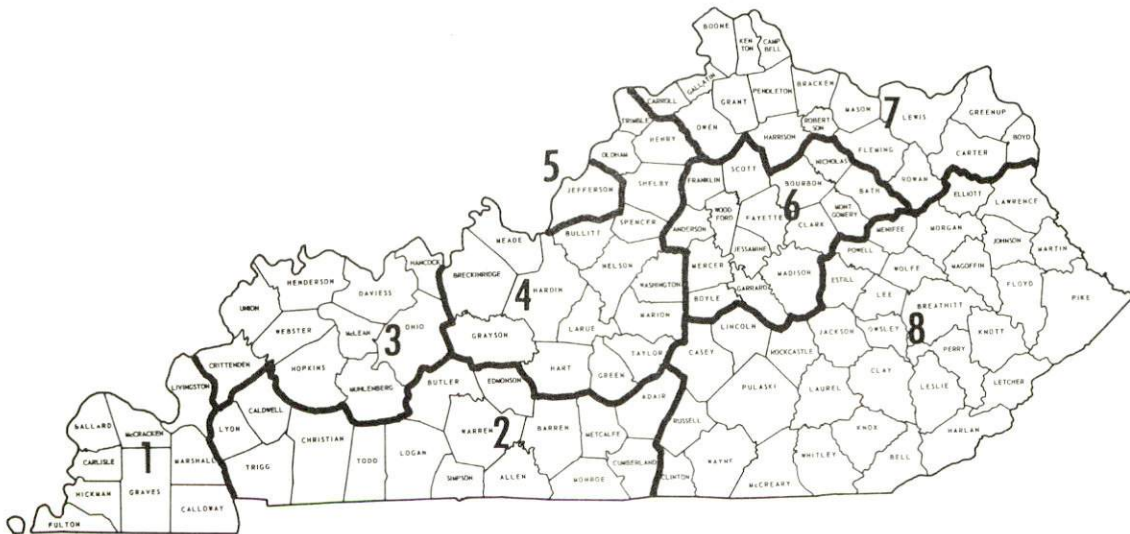
<u>Firm</u>	<u>Product</u>	<u>Employment</u>		
		<u>Total</u>	<u>Male</u>	<u>Female</u>
Middlesboro Tanning Company of Delaware	Tanning and coloring leather	167	165	2
Mid South Mack, Inc.	Rebuilt motors	40		
J. F. Schneider and Sons, Inc.	Meat packing	40	28	12
Tenn-Flake of Middlesboro, Inc.	Flake board	202	200	2
<u>Pineville</u>				
Arthur Asher	Rough lumber, mine timber, crossties	15	15	0
Davidson Lumber Company, Inc.	Lumber, crossties, and wood chips	16	15	1
Delaware Powder Company	Explosives	26	21	5
Paul Elliott Oxygen, Inc.	Cap boards	1	1	0
	Acetylene and oxygen products	10	8	2
Sun Publishing Company, Inc.	Newspaper and job printing	8	4	4

Source: Kentucky Department of Commerce, 1973 Kentucky Directory of
Manufacturers.

WAGES

Occupational wage rates for specific industries are usually not available to most government agencies, and wage data furnished to state employment agencies by industrial employers is protected from disclosure by federal law. The most reliable up-to-date wage information can be obtained by direct contact with local employers.

Associated Industries of Kentucky, a voluntary organization of Kentucky businesses, regularly collects occupational wage rates and fringe benefits data from participating member firms. Data is compiled for over 130 clearly defined office, production, and service occupations. Tabulations are published for eight regions of Kentucky, as shown on the map below. It should be noted that the data may be weighted by the preponderance of firms in the larger cities and may be somewhat higher than the rates paid in the smaller communities. Data from these tabulations are available, upon request, from the Kentucky Department of Commerce, Frankfort, Kentucky 40601.



Associated Industries of Kentucky Area Wage Surveys

LABOR ORGANIZATIONS

<u>Union</u>	<u>Representing manufacturing workers at:</u>
Teamsters	Giles Industries, Incorporated
Amalgamated Meat Cutters and Butcher Workmen of North America, and Teamsters	Middlesboro Tanning Company of Delaware
Amalgamated Meat Cutters and Butcher Workmen of North America	J. F. Schneider and Son, Incorporated
Teamsters	Tenn-Flake of Middlesboro, Incorporated
United Steelworkers of America	Delaware Powder Company
Amalgamated Clothing Workers of America	Excello Shirt Company

ESTIMATED MALE LABOR SUPPLY
MIDDLESBORO AND PINEVILLE LABOR MARKET AREA

<u>Area</u>	<u>Current</u>			<u>Future</u>
	<u>Total</u>	<u>Not in Labor Force</u>	<u>Unemployed</u>	<u>Reaching 18 yrs. of age by 1979</u>
Labor Market				
Area	19,807	12,736	2,429	4,642
Bell	3,786	2,300	722	764
Clay	2,815	1,868	276	671
Harlan	4,803	3,022	554	1,227
Knox	3,253	2,051	313	889
Leslie	1,549	1,146	241	162
Whitley	3,601	2,349	323	929

Sources: Kentucky Department of Economic Security, Kentucky Labor Supply Estimates by County, 1972. Kentucky Department of Commerce, Future Labor Supply by 1979.

ESTIMATED FEMALE LABOR SUPPLY
MIDDLESBORO AND PINEVILLE LABOR MARKET AREA

Area	Current			Future	
	Total	Not in Labor Force	Unemployed	Under-employed	Reaching 18 yrs. of age by 1979
Labor Market					
Area	16,086	10,632	1,461	3,993	8,240
Bell	3,368	2,029	448	891	1,678
Clay	2,054	1,573	154	327	1,188
Harlan	4,306	2,983	336	987	2,101
Knox	2,405	1,511	187	707	1,301
Leslie	1,205	939	139	127	825
Whitley	2,748	1,597	197	954	1,147

Sources: Kentucky Department of Economic Security, Kentucky Labor Supply Estimates by County, 1972. Kentucky Department of Commerce, Future Labor Supply by 1979.

PER CAPITA PERSONAL INCOME

Area	1970	1960	% Change
Bell County	\$2,084*	\$ 995	+109.4
Labor Market Area			
Range	\$890 - 2,269*	\$501 - 1,424	N.A.
Kentucky	3,099	1,581	+ 96.0
U.S.	3,933	2,216	+ 77.5

*Unadjusted for commuting.

Sources: University of Kentucky, Office of Development Services and Business Research, Per Capita Income in Kentucky. U. S. Department of Commerce, Bureau of Economic Analysis, Survey of Current Business, August 1972.

TRANSPORTATION

Rail

Line serving Middlesboro - Louisville and Nashville Railroad Company
and Southern Railway System

Services - Team tracks, switching and carload freight. Piggyback
facilities are available at Knoxville and Morristown, Tennessee,
61 and 49 miles away, respectively.

Line serving Pineville - Louisville and Nashville Railroad Company

Services - Team tracks, switching, interchange track and car load
freight. Piggyback facilities are available at Knoxville and
Morristown, Tennessee, 74 and 62 miles away, respectively.

For details on routing, schedules, rates, and services, contact:

Manager of Industrial Development
Louisville and Nashville Railroad
Company
908 West Broadway
Louisville, Kentucky 40203

and/or

District Sales Manager
Southern Railway System
1402 South 15th Street
Louisville, Kentucky 40210

Truck Service

Company

Bronaugh Motor Express, Inc.*
Consolidated Freightways Corp.*
Hogan Storage and Transfer Co.
Mason and Dixon Lines, Inc.
McLean Trucking Co.
Skyline Transportation, Inc.

Home Office

Lexington, Kentucky
Menlo Park, California
Williamson, West Virginia
Kingsport, Tennessee
Winston-Salem, North Carolina
Knoxville, Tennessee

Other Freight Services

United Parcel Service

Nearest Shipping Center

London, 62 miles from Middlesboro
and 49 miles from Pineville

*Terminal located in Middlesboro.

HIGHWAY MILES AND TRUCK TRANSIT TIME IN DAYS FROM
MIDDLESBORO-PINEVILLE, KENTUCKY,
TO SELECTED MARKET CENTERS

City	Delivery		City	Delivery	
	Highway Miles	Time TL		Highway Miles	Time TL
Atlanta, Ga.	255	2	Los Angeles, Calif.	2,319	6
Birmingham, Ala.	318	2	Louisville, Ky.	212	overnight
Chicago, Ill.	510	3	Nashville, Tenn.	246	overnight
Cincinnati, Ohio	213	overnight	New Orleans, La.	669	3
Cleveland, Ohio	461	2	New York, N. Y.	896	3
Detroit, Mich.	482	overnight	Pittsburgh, Pa.	534	3
Knoxville, Tenn.	61	overnight	St. Louis, Mo.	476	2

Source: Delivery time only - United Trucking Service, Inc., 3047 Lonyo Road, Detroit, Michigan.

Air

Local

Nearest Commercial

Middlesboro-Bell County
Airport
Location: Middlesboro, 13 miles from
Pineville
Runways: 1 paved
Length: 3,650 feet
Traffic
Control: Wind sock
Lighting: None
Services: 80 and 100 octane, major
and minor A and E repairs,
general flying service,
taxi aircraft inspection
and authorization

London-Corbin War Memorial
Airport
London, 49 miles north of Pineville
and 62 miles north of Middlesboro
1 paved
6,000 feet
Wind sock
Beacon, runway and obstruction
lights
80 and 100 octane, JP-A-50;
Piedmont Airlines, taxi, U-Drive-
It, weather, flight training,
charter and ambulance service,
vending machines

Air Freight
Service:

Freight carried on a space-
available basis

Middlesboro

Pineville

Bus - Southern Greyhound Bus Line Southern Greyhound Bus Line

Taxi - 4 taxi companies 3 taxi companies

Rental

Services- Car, truck, and trailer
rentals are available

Car, truck and trailer
rentals are available

POWER AND FUEL

Electricity

Company serving Middlesboro and Pineville - Kentucky Utilities Company

Source of power - Kentucky Utilities Company

Total generating capacity - 1,215,000 KW

For industrial rates contact:

Kentucky Utilities Company
120 South Limestone Street
Lexington, Kentucky 40507

Company serving Bell County - Cumberland Valley RECC

Source of power - East Kentucky Power Cooperative

Total generating capacity - 548,000 KW

For industrial rates contact:

Cumberland Valley RECC
Gray, Kentucky 40734

Natural Gas

Company serving Middlesboro - Gas Service Company, Incorporated

Source of supply - Cumberland Valley Pipeline Company

Size of transmission mains - 8 inches (supplier); 8 inches (distributor)

Distribution mains - 6, 4 and 2 inches

Distribution pressure 10 to 20 psi

Btu content - 1,050 per cubic foot; Specific gravity - .62

For rates and supplies contact:

Gas Service Company, Incorporated
P. O. Box 975
Middlesboro, Kentucky 40965

Company serving Pineville - Pineville Gas Company

Source of supply - Cumberland Valley Pipeline Company

Size of transmission mains - 8 inches (supplier); 6 inches (distributor)

Distribution mains - 4 inches

Distribution pressure - 7 psi

Btu content - 1,100 per cubic foot; Specific gravity - .58

For rates and supplies contact:

Pineville Gas Company
306 Pine Street
Pineville, Kentucky 40977

Other Fuels

Propane and Butane - Middlesboro - Lewis L. P. Gas Company in Middlesboro; Pineville - Lewis L. P. Gas Company in Middlesboro and Barton's Gas Service in Barbourville

Fuel Oils -

Distillate fuel oil - Middlesboro - Blakeman and Sons, Incorporated; Brooks Oil Company; Gulf Oil Products, Incorporated; and Harris Oil Company have bulk plants in Middlesboro; Pineville - Standard Oil Company, bulk plant in Pineville, Brooks Oil Company in Middlesboro and G and M Oil Company in Barbourville

Residual fuel oil - arrangements must be made with the refinery

Low sulphur content coal - available locally

WATER AND SEWERAGE

Water

Company serving Middlesboro - Kentucky Water Service Company, Inc.
Source - Fern Lake Company
Treatment plant capacity - 2,000,000 gallons per day
Average daily consumption - 1,375,870 gallons
Peak daily consumption - 1,632,000 gallons
Type treatment - Settling, coagulation, filtering and chlorination
Storage capacity - 1,300,000 gallons
Size mains - 24, 10 and 6 inches
Average pressure - 110 psi
Average temperature - 60.5 degrees F.

MONTHLY WATER RATES FOR WHOLESALE AND INDUSTRIAL CONSUMERS

First	1,000 gallons	\$3.15 (Minimum)
Next	9,000 gallons	.90 per M gallons
Next	15,000 gallons	.85 per M gallons
Next	25,000 gallons	.75 per M gallons
Next	50,000 gallons	.65 per M gallons
Next	100,000 gallons	.60 per M gallons
Over	200,000 gallons	.50 per M gallons

MINIMUM MONTHLY CHARGES

5/8 or 3/4 inch meter	\$ 3.15
1 or 1 1/4 inch meter	7.00
1 1/2 inch meter	13.00
2 inch meter	19.50
3 inch meter	52.50
4 inch meter	87.00
6 inch meter	175.00

Company serving Pineville - Pineville Water Company
Source - Cannon Creek Reservoir
Treatment plant capacity - 1,000,000 gallons per day
Average daily consumption - 300,000 gallons
Peak daily consumption - 400,000 gallons
Type treatment - Rapid sand filter
Storage capacity - 1,400,000 gallons
Size mains - 12, 8 and 6 inches
Average pressure - 90 psi

MONTHLY WATER RATES FOR WHOLESAL
AND INDUSTRIAL CONSUMERS

First	1,000 gallons	\$2.80 (Minimum)
Next	9,000 gallons	1.25 per M gallons
Next	40,000 gallons	.90 per M gallons
Over	50,000 gallons	.70 per M gallons

Surface water sources - Cumberland River

Average discharge - Cumberland River near Pineville, Kentucky
1,328 cfs (33-year record)

Expected ground water yield - Belts extending through central and southern
portions 5 to 50 gallons per minute with small portion having 200 to 500
gallons per minute; remainder of county yields 50 to 200 gallons per minute

Sewerage

Company serving Middlesboro - Middlesboro Sewage Commission

Design capacity - 3,000,000 gallons per day

Average daily flow - 1,500,000 gallons

Treatment - Primary and secondary

Type treatment - Activated sludge and aeration

Treated effluent discharged into - Yellow Creek

Size of sanitary mains - 8 to 24 inches

Size of storm mains - 8 inches to 7 feet

Rates - 70 percent of monthly water bill

Company serving Pineville - Pineville Municipal Sanitation Commission

Design capacity - 400,000 gallons per day

Average daily flow - 150,000 gallons

Treatment - Secondary

Type treatment - Aeration

Treated effluent discharged into - Cumberland River

Size of sanitary mains - 12, 10, 8, 6 and 4 inches

Size of storm mains - 42, 36, 24 and 18 inches

Rates - 57 percent of monthly water bill

LOCAL GOVERNMENT

City

Middlesboro

Structure - Mayor - 4-year term; 12 councilmen - 2-year terms

Budget 1972-73 - General Fund \$620,642

Water and Sewer Fund 137,166

Annual fees and licenses - Vehicle - auto - \$5, small truck - \$7.50, large truck - \$10, out-of-town vehicle - \$5; professional fee - \$50 to \$300; retailers and wholesalers - retailers \$10 to \$500, wholesalers \$8 to \$400; occupational license tax - 1 percent; unloading license \$35

Pineville

Structure - Mayor - 4-year term; 8 councilmen - 2-year terms

Budget 1972-73 - General Fund \$121,282

Water and Sewer Fund 86,656

Annual fees and licenses - Vehicle privilege license - \$5 ; business privilege license \$1 to \$2,179; unloading license \$35

County

Structure - County Judge - 4-year term; 8 magistrates - 4-year terms

Budget 1972-73 - General Fund \$217,714; Road Fund \$41,700

Assessed Value of Property, 1972

<u>Classes of Property</u>	<u>Middlesboro</u>	<u>Pineville</u>	<u>Bell County</u>
Real Estate	\$32,603,080	\$8,671,238	\$68,098,100
Tangibles	7,296,437	2,235,055	33,399,733
Public Service	6,616,964	2,164,552	24,043,478 (1971)

Property Taxes

Land and buildings are taxed by the state and may be taxed by local jurisdictions. The state rate is \$0.015 per \$100 of assessed valuation.

Tangible personal property owned by manufacturers (automobiles, trucks, finished goods, office furniture, office equipment) is taxed by the state at \$0.15 per \$100 and may be taxed by local jurisdictions.

Manufacturing machinery, raw materials inventories, and goods in process inventories are not subject to local taxation. The state rate is \$0.15 per \$100.

Property stored in public warehouses is not subject to local taxation. The state rate is only \$0.015 per \$100.

All property is assessed at 100 percent of fair cash value.

Local Property Tax Rate Per \$100 of Assessed Valuation, 1972*

<u>Taxing Jurisdiction</u>	<u>Middlesboro</u>	<u>Pineville</u>	<u>Bell County</u>
County	\$.266	\$.266	\$.266
School	.878	.612	.497
City	.312	.575	

Planning and Zoning

City agency - Middlesboro Planning Commission
 Zoning enforced - City only
 Subdivision regulations enforced - City only
 Local codes enforced - Building and housing
 Mandatory state codes enforced - Plumbing, National Fire Protection Association Code, National Building Code (for major buildings and residential construction containing more than 12 bedrooms per building)

City agency - Pineville Planning Commission
 Zoning enforced - City only
 Subdivision regulations enforced - City only
 Local codes enforced - Building and housing
 Mandatory state codes enforced - Plumbing, National Fire Protection Association Code, National Building Code (for major buildings and residential construction containing more than 12 bedrooms per building)
 Other programs - Public housing, Neighborhood Development Program, Neighborhood Analysis Program

Safety

<u>Police</u>	<u>Middlesboro</u>	<u>Pineville</u>	<u>Bell County</u>
Total staff	20	5	8
Radio-patrol cars	4	1	5

*Kentucky Department of Revenue, Kentucky Property Tax Rates, 1972.

<u>Fire</u>	<u>Middlesboro</u>	<u>Pineville</u>
American Insurance Association Fire Rating	6	8
Full-time staff	20	2
Volunteers	14	14
Equipment:		
750 gpm pumpers	2	3
500 gpm pumpers	2	
Ladder truck	1	
Other	Centrifugal pump	Centrifugal pump, breathing equipment

Rescue Service

Middlesboro and Bell County Emergency Rescue Squad, Inc.

Number of volunteers - 25

Equipment - Crash truck, jeep, 5 boats, 4 motors, scuba diving equipment, staff car, 3/4 ton truck, ambulance, 2 large portable generators, 3 small portable generators, bus, portable kitchen, and radio equipment in all vehicles

Personnel training - First aid courses, dragging operation procedures, emergency medical technician - ambulance course and Red Cross first aid instructor's course

Sanitation

	<u>Middlesboro</u>	<u>Pineville</u>
Type service	Municipal	Municipal
Fee charged:		
residential	\$3.00 to \$4.50 per month	\$1.25 per month
business	Contracted	Contracted
Collection frequency:		
residential	Once or twice per week	Once per week
business	Contracted	Contracted
Trash pickup		Contracted
Disposal method	Landfill	Landfill

EDUCATION

Public Schools

	<u>Middlesboro Independent</u>	<u>Pineville Independent</u>	<u>Bell County</u>
Total Enrollment (Fall, 1972)	2,782	620	4,729
Elementary	1,481	330	3,541
Junior High	491		
High School	810	290	1,188
Student-Teacher Ratio	24-1	22-1	21-1
Elementary	26-1	28-1	23-1
Junior High	22-1		
High School	21-1	18-1	17-1
Accreditation	Southern Association of Colleges and Schools	Southern Association of Colleges and Schools	Southern Association of Colleges and Schools (1)
Percent High School Graduates to College	49.6	75	22.7
Expenditures Per Pupil (1971-72)	\$430.48	\$437.14	\$457.32
Bonded Indebtedness, June 30, 1972	\$3,181,000	\$715,000*	\$1,459,000

Nonpublic Schools

Total Enrollment	67
Elementary	67
Student-Teacher Ratio	22-1
Elementary	22-1

*Includes \$330,000 issue of advance refunding.

Vocational Schools

	<u>Nearest State School</u>	<u>Nearest Area Education Center</u>
	Harlan State Vocational- Technical School	Bell County Area Vocational Education Center
Location	Harlan	Pineville
Miles Distant	46 miles from Middles- boro and 33 miles from Pineville	13 miles from Middlesboro
Curriculum	Health Careers Child Care Food Service Learning Lab Electronics (Industrial) Air Conditioning and Refrigeration Auto Body Repair Auto Mechanics Carpentry Drafting Electricity Machine Shop Mine Maintenance	Appliance Repair Auto Body Repair Auto Mechanics Carpentry Drafting Electricity Machine Shop Radio and TV Repair
		Pineville School of Practical Nursing
Location		Pineville
Miles Distant		13 miles from Middlesboro
Curriculum		Practical Nursing

Arrangements can be made to provide training in the specific production skills required by an industrial plant. Instruction may be conducted either in the vocational school or in the industrial plant, depending upon the desired arrangement and the availability of special equipment.

Colleges and Universities

<u>Name</u>	<u>Area - Within 100 miles</u>		<u>Highest Degree Conferred</u>
	<u>Location</u>	<u>Enrollment (Fall, 1972)</u>	
Carson-Newman University	Jefferson City, Tennessee	1,685	Baccalaureate
Cumberland College	Williamsburg	1,751	Baccalaureate
Hazard Community College	Hazard	203	Associate
Johnson Bible College	Knoxville, Tennessee	300	Masters
Knoxville College	Knoxville, Tennessee	927	Baccalaureate
Lincoln Memorial University	Harrogate, Tennessee	567	Baccalaureate
Somerset Community College	Somerset	690	Associate
Southeast Community College	Cumberland	306	Associate
Sue Bennett Junior College	London	190	Associate
Union College	Barbourville	889	Masters
University of Tennessee	Knoxville, Tennessee	26,415	Ph. D.
University of Virginia	Wise, Virginia	765	Baccalaureate

HEALTH

Hospitals

<u>General Hospitals</u>	<u>Location</u>	<u>Beds</u>
The Middlesboro Appalachian Regional Hospital	Middlesboro	143
The Middlesboro Hospital and Clinic	Middlesboro	20
The Pineville Community Hospital	Pineville	207

The Middlesboro Appalachian Regional Hospital

General hospital facilities - Radiology department, clinical laboratory, 2 operating rooms, 2 delivery rooms; newborn nursery, emergency unit, 143 acute beds and 55-bed extended care facility

Medical staff - 2 surgeons, 2 pediatricians, 2 OB-GYN specialists, 1 EENT specialist, 4 general practitioners, 1 internist, 1 dentist, 25 registered nurses, 3 licensed practical nurse specialists, 30 licensed practical nurses, 20 nurse aides, 3 anesthetists, 5 doctors on courtesy staff and 11 consulting doctors

The Middlesboro Hospital and Clinic

General hospital facilities - X-ray room, emergency room, laboratory department, operating room, outpatient clinic

Medical staff - 3 physicians, 8 registered nurses, 15 licensed practical nurses, 3 nurse aides, 4 orderlies and 30 office and kitchen staff

The Pineville Community Hospital

General hospital facilities - X-ray department, delivery room, 2 operating rooms, obstetric and diagnostic department, ambulant care center, community physicians' offices, 134 acute beds, 35 extended care beds, 32 nursing home beds, 6 intensive and cardiac care beds

Medical staff - Total staff: 321 personnel (10 active physicians, 3 dentists, 16 registered nurses, 52 licensed practical nurses, 83 nurse aides, orderlies and ward clerks) Specialists are available on a consultation basis and all doctors for the community are located in the ambulant care center.

Other - The Daniel Boone Clinic, Middlesboro

General hospital facilities - 17 physicians offices, 35 examination rooms, laboratory, ophthalmology department, dermatology department, pediatric department

Medical staff - 9 physicians, 5 consulting physicians, 8 licensed practical nurses, 4 nurse aides and 16 office personnel

Nursing Homes

	<u>Number</u>	<u>Beds</u>
Extended care homes	2	122
Personal care homes	1	44

Public Health

Facility - Bell County Health Department

Staff - 3 nurses, 2 sanitarians, 4 clerks, 1 administrative assistant, 1 health service aide, 1 area plumbing inspector

Budget 1972-73 - \$87,789

OTHER LOCAL FACILITIES

Communications

Middlesboro

Telephone - South Central Bell Telephone Company
Services - Standard

Telegraph - Western Union
Services - Local office

Postal - U. S. Post Office
Class - First
Mail received - Three times daily
Mail dispatched - Twice daily

Newspapers - Middlesboro Daily News
Daily and circulation - 7,300
Other papers received from - Louisville and Lexington, Kentucky;
Knoxville, Tennessee

Radio - WAFI and WMIK AM and FM
Stations received from - Knoxville, Tennessee; Pineville, London and
Corbin, Kentucky

Television - Cable service
Reception from - Lexington, Kentucky; Knoxville, Tennessee; Bristol,
Virginia; Asheville, North Carolina
Kentucky Educational Television - Hazard, Channel 35
Tennessee Educational Television - Sneedville, Tennessee, Channel 2

Pineville

Telephone - South Central Bell Telephone Company
Services - Standard

Telegraph - Western Union
Services - Local office

Postal - U. S. Post Office
Class - First
Mail received - Twice daily
Mail dispatched - Twice daily

Pineville (continued)

Newspapers - The Sun Courier	The Bell County Bugle
Weekly and circulation - 3,950	3,000
Other papers received from - Louisville and Lexington, Kentucky; Knoxville, Tennessee	

Radio - WANO and WTJM - FM
Stations received from - Barbourville, Corbin, London and Middlesboro,
Kentucky; Knoxville, Tennessee

Television - Cable service
Reception from - Lexington, Kentucky; Knoxville and Johnson City,
Tennessee; Bristol, Virginia; Asheville, North Carolina
Kentucky Educational Television - Somerset, Channel 29; Hazard,
Channel 35
Tennessee Educational Television - Sneedville, Tennessee, Channel 2

Library Services

Public library - Middlesboro Public Library
Size collection - 27,000 volumes
Circulation, 1972 - 65,000 (combined library and bookmobile)
Services - Magazines, newspapers, books, story hour, bookmobile,
talking books for the blind, art prints, photocopier, films, projector,
screen, records, and direct communications with Department of
Libraries in Frankfort

Public library - The Pineville-Bell County Public Library
Size collection - 59,000 volumes (combined library and bookmobile)
Services - Magazines, reference books, bookmobile, story hour, books,
films, screen, projector, records, talking books, art prints, photo
copier, newspapers, community room with kitchen facilities, service
to shut-ins and convalescent homes and direct communications with
Department of Libraries in Frankfort

Religious Institutions

	<u>Middlesboro</u>	<u>Pineville</u>
Number of churches -	43	8
Denominations -	AME Zion	Baptist
	Baptist	Catholic
	Catholic	Christian
	Christian	Church of God
	Christian Science	Methodist
	Church of Christ	Nazarene
	Church of First Born	Presbyterian

Religious Institutions (continued)

Middlesboro

Church of God
Episcopal
Jehovah's Witnesses
Methodist
Nazarene
Pentecostal
Presbyterian
Salvation Army

Nearest Synagogues - Knoxville

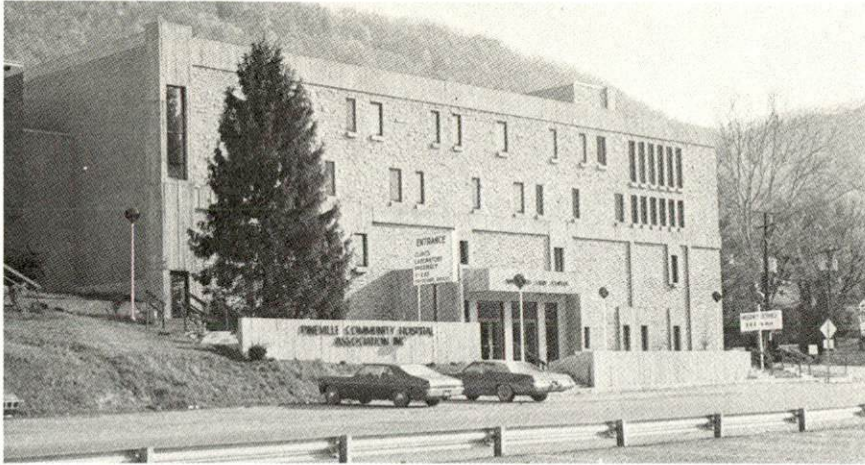
Congregations - Heska Amuna (Orthodox), Temple Bethel (Reform)

Financial Institutions

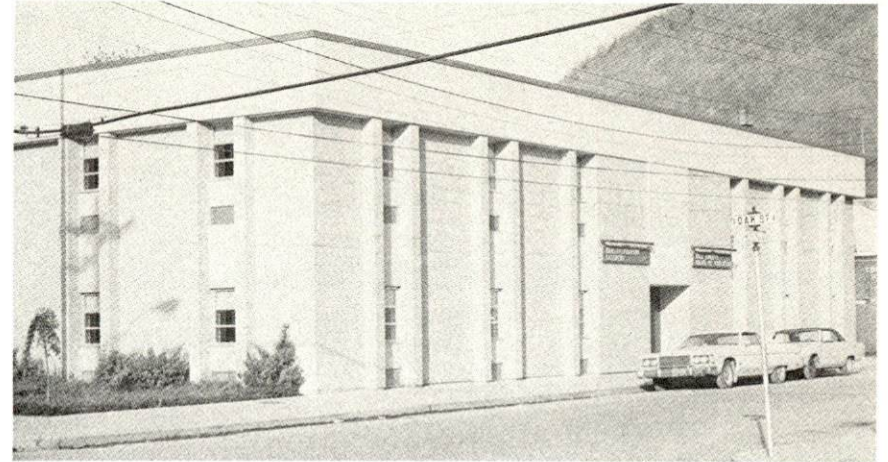
<u>Banks</u>	<u>Statement as of December 31, 1972</u>	
	<u>Assets</u>	<u>Deposits</u>
<u>Middlesboro</u>		
Commercial Bank	\$26,781,013.05	\$24,392,303.00
The National Bank	24,271,436.38	22,677,824.61
<u>Pineville</u>		
First State Bank	\$12,884,209.31	\$11,591,464.20
<u>Savings and Loan Associations</u>		
<u>Middlesboro</u>		
Home Federal	\$11,905,539.53	\$10,968,440.54
Middlesboro Federal	13,218,825.90	12,050,000.33
<u>Pineville</u>		
First Federal	\$ 9,782,421.84	\$ 8,943,246.51

Hotels and Motels

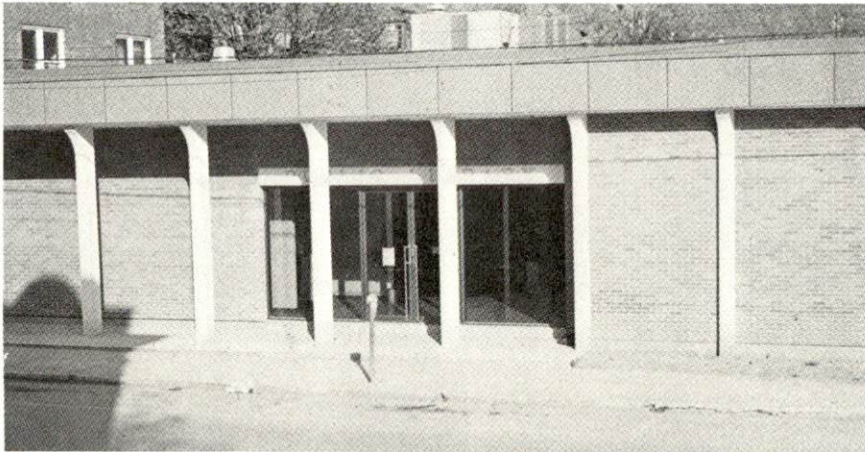
	<u>Middlesboro</u>	<u>Pineville</u>
Total number	11	5
Units	351	109



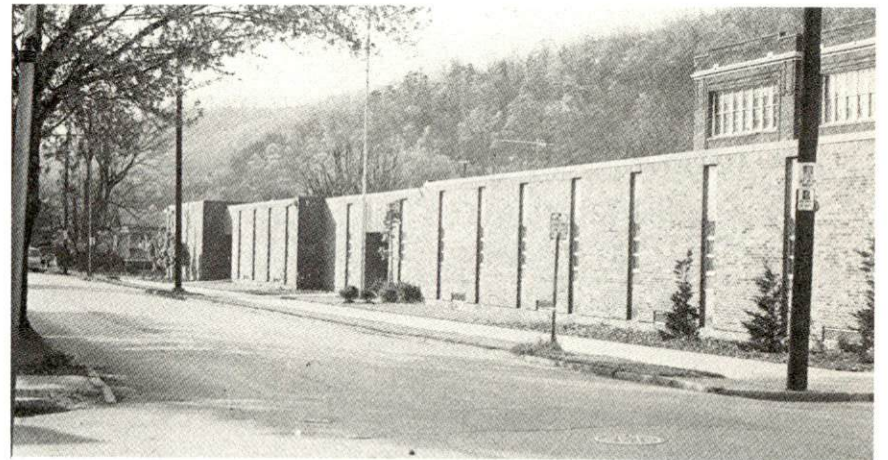
BELL COUNTY BOARD OF EDUCATION
ADMINISTRATION BUILDING



PINEVILLE COMMUNITY HOSPITAL



PINEVILLE-BELL COUNTY PUBLIC LIBRARY



PINEVILLE ELEMENTARY SCHOOL

Clubs and Organizations

Middlesboro

Business and Civic - Chamber of Commerce, Kiwanis, Rotary, Lions, Retail Merchants Association, Jaycees

Fraternal - American Legion, Masonic Lodge, J.O.U.A.M., Elks

Women's - Business and Professional Women's Club, Cumberland Park Garden Club, Middlesboro Garden Club, Middlesboro Junior Woman's Club, American Legion Auxiliary; Alpha Mu Chapter, Beta Sigma Phi; Rebekahs, Eastern Star, Jaycettes, D.A.R.; Xi Phi Chapter, Beta Sigma Phi; Nancy Hanks Club, Middlesboro Democratic Woman's Club, Middlesboro Senior Homemakers; Phi Chapter, Alpha Delta Kappa; Republican Women's Club, Mountain View Homemakers

Youth - 4-H, Key Club, Boy Scouts, Cub Scouts, Girl Scouts, Brownies, FHA, FFA

Other - PTA, Middlesboro Ministerial Association, Middlesboro Federated Music Club, Middlesboro Little Theater, Middlesboro Art Club, Tri-State Citizens Band Radio Club, Tri-State Saddle Club, American Association of Retired Persons, Palette Art League

Pineville

Business and Civic - Bell County Bar Association, Chamber of Commerce, Kiwanis, Lions, Rotary, Pineville Improvement Committee, Jaycees

Fraternal - American Legion, Masonic Lodge

Women's - Business and Professional Women's Club, Junior Woman's Club, Junior and Senior Homemakers, Senior Women's Club, Eastern Star, Mountain Laurel Garden Club, Pineville Garden Club, PTA

Youth - Boy Scouts, Cub Scouts, FHA, FFA, 4-H, Little League Program, Lion's Lair

RECREATION

Local

	<u>Middlesboro</u>	<u>Pineville</u>
Public Recreation Facilities		
Supervised program -	Yes	Yes
Playgrounds -	2	5
Swimming pools -	1	1
Golf course -		1
Tennis courts -	2	1
Baseball diamonds -	1	1
Football fields -	1	1
Other -	Two basketball courts, city maintained civic center	Two basketball courts, Lion's Lair Youth Center, Men's and Women's softball league
Private Recreation Facilities		
Country club -	1	
Golf course -	1	
Swimming pool -	1	
Movie theater -	1	
Bowling lane -	1	
Tennis courts -	2	
Other -	Roller skating rink Drive-In Theater	
Tourist Attractions		
Middlesboro -	The Coal House and the Lincoln Room at Lincoln Memorial University	
Pineville -	Chained Rock and Cumberland Ford	
Cultural Events		
Middlesboro -	Little theater, Cumberland Gap National Historic Park Programs and Lincoln Memorial University cultural programs	
Pineville -	The Book of Job, The Kentucky Mountain Laurel Festival and Sidewalk Art Show	

Area (Within 70 miles)

Cumberland Falls State Resort Park, Cumberland Gap National Historical Park, Kingdom Come State Park, Levi Jackson Wilderness Road State Park, Pine Mountain State Resort Park

AGRICULTURE - NATURAL RESOURCES - CLIMATE

Agriculture*

	<u>Bell County</u>	<u>Labor Market Area</u>
Total land area (acres)	236,736	1,634,048
Percent of area in farm land	3.0	16.5
Number of farms	91	2,355
Average size of farms (acres)	77.1	114.5
1969 value of all farm products	\$118,007	\$ 4,194,745
Value per farm	1,297	1,781
Total crop sales	30,819	2,410,347
Total livestock & livestock products	87,188	1,719,077
1970 agricultural production included:		
Burley tobacco (lbs.)	10,000	5,302,000
Corn (bu.)	10,000	263,000
Cattle and calves (number)	800	22,100
Hogs and pigs (number)	--	9,500
Milk production, 1969 (lbs.)	--	18,480,000**

Natural Resources

Principal mineral resources	Coal and petroleum
Other mineral resources	Natural gas and limestone
Acres of commercial forest land	197,900
Most abundant tree species	Red oak, white oak, hickory, yellow poplar, beech, soft maple, and blackgum

*U. S. Department of Commerce, Bureau of the Census, Census of Agriculture, 1969. U. S. Department of Agriculture and Kentucky Department of Agriculture, Kentucky Agricultural Statistics, 1971.

**Excludes production in Bell, Harlan and Leslie Counties.

Climate*

Bell County

Temperature

Annual mean (30-year record)	59.6 degrees
Average annual 1971	59.2 degrees
Record highest August, 1968 (11-year record)	99.0 degrees
Record lowest January, 1966 (11-year record)	- 9.0 degrees
Normal heating degree days (30-year record)	3,494
(Heating degree day totals are the sums of negative departures of average daily temperatures from 65 degrees F.)	

Precipitation

Mean annual total (30-year record)	45.85 inches
Mean annual snow and sleet (29-year record)	13.10 inches
Total precipitation 1971	50.44 inches
Mean number days precipitation (.01 inch or more) (29-year record)	127
Average number days thunderstorms (29-year record)	48
Prevailing winds (14-year record)	Northeast

*U. S. Department of Commerce, Environmental Science Services Administration, Climatological Data, 1971. Station of record: Knoxville, Tennessee.

HISTORY

Bell County lies in the southeastern corner of Kentucky, bordered by both Tennessee and Virginia, and is at the site of historic Cumberland Gap. It covers 370 square miles of territory and is bisected by the Cumberland River. The surface is mountainous, with thin soil on the mountainsides and some rich bottom lands along the Cumberland. Some of the largest seams of bituminous coal in the state are found in the area. Much of the land is forested, with portions of several state and national forest areas lying here. Best known of its mountains is Pine Mountain in the western part of the county.

The earliest explorers in Kentucky came into Bell County through Cumberland Gap. Dr. Thomas Walker led a hunting and surveying party through the gap and Bell County in 1750 and built the first house in Kentucky in neighboring Knox County. It was Walker who named the Cumberland Mountains and River for the Duke of Cumberland, a son of King George II. Several groups of explorers came in the 1760's, and in 1769 Daniel Boone made his first visit to Kentucky through Cumberland Gap. Settlements in Bell County were late in developing due to the advantages offered by the Bluegrass area.

A fierce Civil War battle was fought in Bell County for Pinnacle Mountain and Port Lyon in 1863. Ruins of the fort can still be seen. Four years afterwards, in 1867, Bell became Kentucky's one-hundred-twelfth county, then called Josh Bell County after Joshua Fry Bell, a descendant of Dr. Thomas Walker, who served in the U. S. Congress and was distinguished in Kentucky politics.

Middlesboro, the largest town in southeastern Kentucky, is a trading center lying at the foot of Cumberland Gap. It was founded by British investors who supplied the capital to purchase its site and was named for the iron city in the English Midlands. A thriving progressive city, Middlesboro had a population of 11,878 in 1970. Pineville, named for Pine Mountain at whose base it lies, is the county seat of Bell County and had a 1970 population of 2,817. It grew up around the site of the first toll-gate along the Wilderness Road, which was constructed in 1797 when the Legislature appropriated some \$20,000 to repair the road.

The county's population was only 3,731 in 1870, but it grew rapidly to 47,602 in 1950. In the next decade there was a significant decline to 35,336; and although population was again down to 31,121 in 1970, the rate of decline was only one-half that of the previous decade.

Agricultural production is small in Bell County, with agricultural employment accounting for only 120 of a total 8,120 workers in 1971. Cattle, poultry, and burley tobacco are the main products. Manufacturing activity has shown very significant growth since 1959, providing 1,490 jobs in 1971. Heaviest concentration of production is in clothing, leather, lumber and food products. The county's largest firms at Middlesboro are: Excello Shirt Company, which makes men's shirts, Giles Industries, making mobile homes, Tenn-Flake of Middlesboro, flake board, and Middlesboro Tanning Company of Delaware, tanning leather.

Of great economic importance to Bell County is the mining of coal. The Chamber of Commerce building at Middlesboro is constructed with blocks of coal, emphasizing the mineral's importance to this, one of Kentucky's leading coal-producing counties.