

1972

Industrial Resources: Boyle County - Danville

Kentucky Library Research Collections
Western Kentucky University, spcol@wku.edu

Follow this and additional works at: https://digitalcommons.wku.edu/boyle_cty

 Part of the [Business Administration, Management, and Operations Commons](#), [Growth and Development Commons](#), and the [Infrastructure Commons](#)

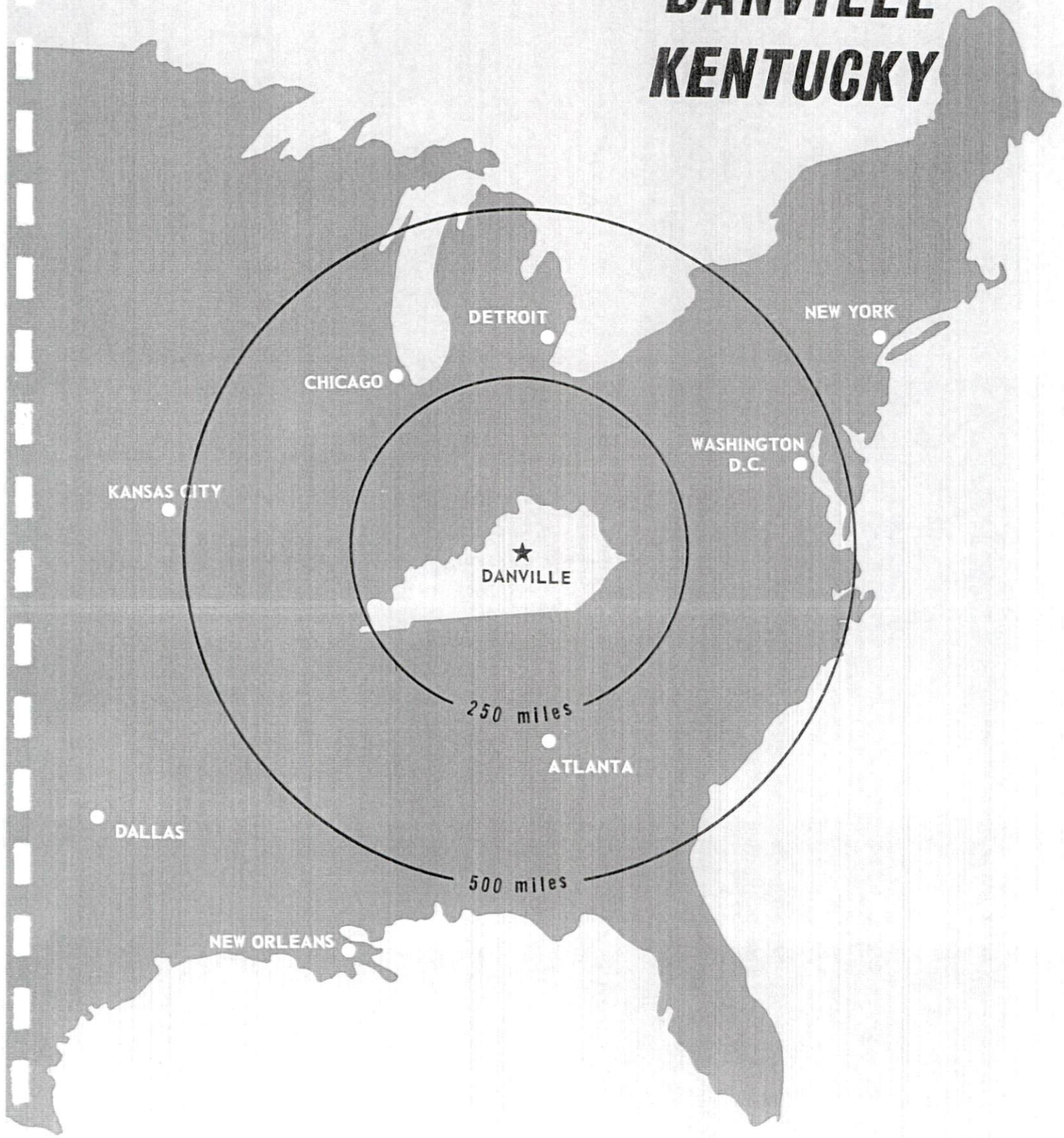
Recommended Citation

Kentucky Library Research Collections, "Industrial Resources: Boyle County - Danville" (1972). *Boyle County*. Paper 6.
https://digitalcommons.wku.edu/boyle_cty/6

This Report is brought to you for free and open access by TopSCHOLAR®. It has been accepted for inclusion in Boyle County by an authorized administrator of TopSCHOLAR®. For more information, please contact topscholar@wku.edu.

INDUSTRIAL RESOURCES

DANVILLE KENTUCKY



DANVILLE INDUSTRIAL SITES

1972

DANVILLE INDUSTRIAL SITES
1972

For more information about the following sites, contact J. H. Bailey, Jr., Kentucky Utilities Company, Danville, Kentucky; or the Kentucky Department of Commerce, Frankfort, Kentucky.

SITE #1: ACREAGE: 10 acres
LOCATION: Boyle County Industrial Park,
1 mile southwest of Danville
ZONING: Industrial
HIGHWAY ACCESS: Kentucky Highway 34 bounds
the site on the north.
RAILROADS: A Southern Railway spur is on the Royal
Industries property at the south.
WATER: Danville Municipal
SIZE LINE: 10-inch line on northeast corner of site
GAS: Western Kentucky Gas Company
SIZE MAIN: 4-inch main to the west at intersection
of Kentucky 34 and 127 by-pass
ELECTRICITY: Kentucky Utilities Company
SEWERAGE: Danville Municipal
SIZE LINE: 10-inch line to the southeast at
American Greetings Corporation
OWNERSHIP: Danville Development Corporation

SITE #4: ACREAGE: 30 acres
LOCATION: Boyle County Industrial Park,
1 mile southwest of Danville
ZONING: Industrial
HIGHWAY ACCESS: Paved access to 127 by-pass
RAILROADS: Southern Railway spur to the east at Jackson
of Danville
WATER: Danville Municipal
SIZE LINE: 12-inch line approximately 500 feet to the north at
American Greetings Corporation
GAS: Western Kentucky Gas Company
SIZE MAIN: 4-inch main approximately 500 feet to the north at
American Greetings Corporation
ELECTRICITY: Kentucky Utilities Company
SEWERAGE: Danville Municipal
SIZE LINE: 10-inch line approximately 500 feet to north at
American Greetings Corporation
OWNERSHIP: Danville Development Corporation

SITE #2: ACREAGE: 12 acres
LOCATION: Boyle County Industrial Park,
1 mile southwest of Danville
ZONING: Industrial
HIGHWAY ACCESS: Kentucky Highway 34 and 127 by-pass
RAILROADS: A Southern Railway spur is near the southwest
corner at the Royal Industries property.
WATER: Danville Municipal
SIZE LINE: 10-inch line at Kentucky 34 on north boundary
GAS: Western Kentucky Gas Company
SIZE MAIN: 4-inch main at the east boundary across
127 by-pass
ELECTRICITY: Kentucky Utilities Company
SEWERAGE: Danville Municipal
SIZE LINE: 10-inch line to the south at Royal Industries
OWNERSHIP: Danville Development Corporation

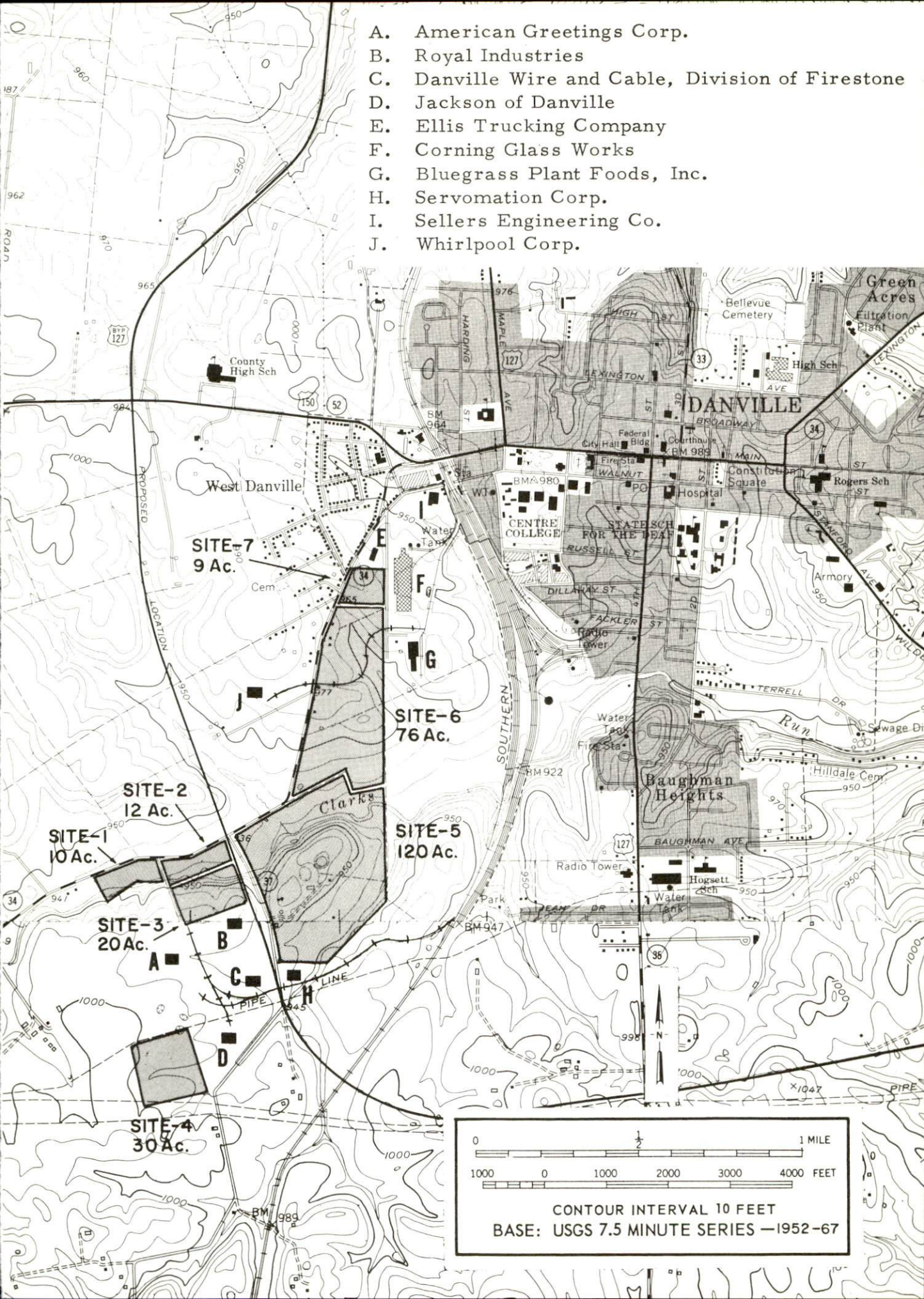
SITE #5: ACREAGE: 120 acres
LOCATION: Boyle County Industrial Park,
1 mile southwest of Danville
ZONING: Industrial
HIGHWAY ACCESS: Kentucky Highway 34 and 127 by-pass
RAILROADS: Southern Railway system tracks within
1,000 feet of site
WATER: Danville Municipal
SIZE LINE: 12-inch line along northeast boundary;
10-inch line to the south at Servomation
GAS: Western Kentucky Gas Company
SIZE MAIN: 4-inch main along the west and northwest boundaries
ELECTRICITY: Kentucky Utilities Company
SEWERAGE: Danville Municipal
SIZE LINE: 10-inch line along northeast section; 8-inch line
along southeast boundary
OWNERSHIP: Danville Development Corporation

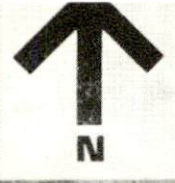
SITE #3: ACREAGE: 20 acres
LOCATION: Boyle County Industrial Park
1 mile southwest of Danville
ZONING: Industrial
HIGHWAY ACCESS: 127 by-pass bounds the site on the east.
RAILROADS: Southern Railway spur near southwest
corner of site
WATER: Danville Municipal
SIZE LINE: 12-inch line on east boundary
GAS: Western Kentucky Gas Company
SIZE MAIN: 4-inch main near the east boundary across
127 by-pass and to the south at Royal Industries
ELECTRICITY: Kentucky Utilities Company
SEWERAGE: Danville Municipal
SIZE LINE: 10-inch line to Royal Industries and to east
across 127 by-pass
OWNERSHIP: Danville Development Corporation

SITE #6: ACREAGE: 76 acres
LOCATION: Boyle County Industrial Park
ZONING: Industrial
HIGHWAY ACCESS: Kentucky Highway 34 bounds property on west.
RAILROADS: Southern Railway spur crosses the site.
WATER: Danville Municipal
SIZE LINE: 12-inch line on the west boundary
GAS: Western Kentucky Gas Company
SIZE MAIN: 4-inch main on the western boundary
ELECTRICITY: Kentucky Utilities Company
SEWERAGE: Danville Municipal
SIZE LINE: 10-inch line on the western boundary
OWNERSHIP: Danville Development Corporation

SITE #7: ACREAGE: 9 acres
LOCATION: Kentucky Highway 34 to southwest of city
ZONING: Industrial
HIGHWAY ACCESS: Kentucky Highway 34 bounds the site
on the west.
RAILROADS: Southern Railway system spur within
500 feet of site
WATER: Danville Municipal
SIZE LINE: 12-inch line on the west boundary
GAS: Western Kentucky Gas Company
SIZE MAIN: 4-inch main on the west just across
Kentucky Highway 34
ELECTRICITY: Kentucky Utilities Company
SEWERAGE: Danville Municipal
SIZE LINE: 10-inch line 1,500 feet to the south
OWNERSHIP: Private

- A. American Greetings Corp.
- B. Royal Industries
- C. Danville Wire and Cable, Division of Firestone
- D. Jackson of Danville
- E. Ellis Trucking Company
- F. Corning Glass Works
- G. Bluegrass Plant Foods, Inc.
- H. Servomation Corp.
- I. Sellers Engineering Co.
- J. Whirlpool Corp.





SELLERS ENGINEERING COMPANY

ELLIS TRUCKING COMPANY

CORNING GLASS WORKS

WHIRLPOOL CORPORATION

BLUEGRASS PLANT FOODS, INC.

ROYAL INDUSTRIES

AMERICAN GREETINGS CORPORATION

SERVOMATION CORPORATION

DANVILLE WIRE & CABLE COMPANY

BOYLE COUNTY
Danville, Kentucky

INDUSTRIAL RESOURCES

DANVILLE, KENTUCKY

Prepared by

The Kentucky Department of Commerce

in cooperation with

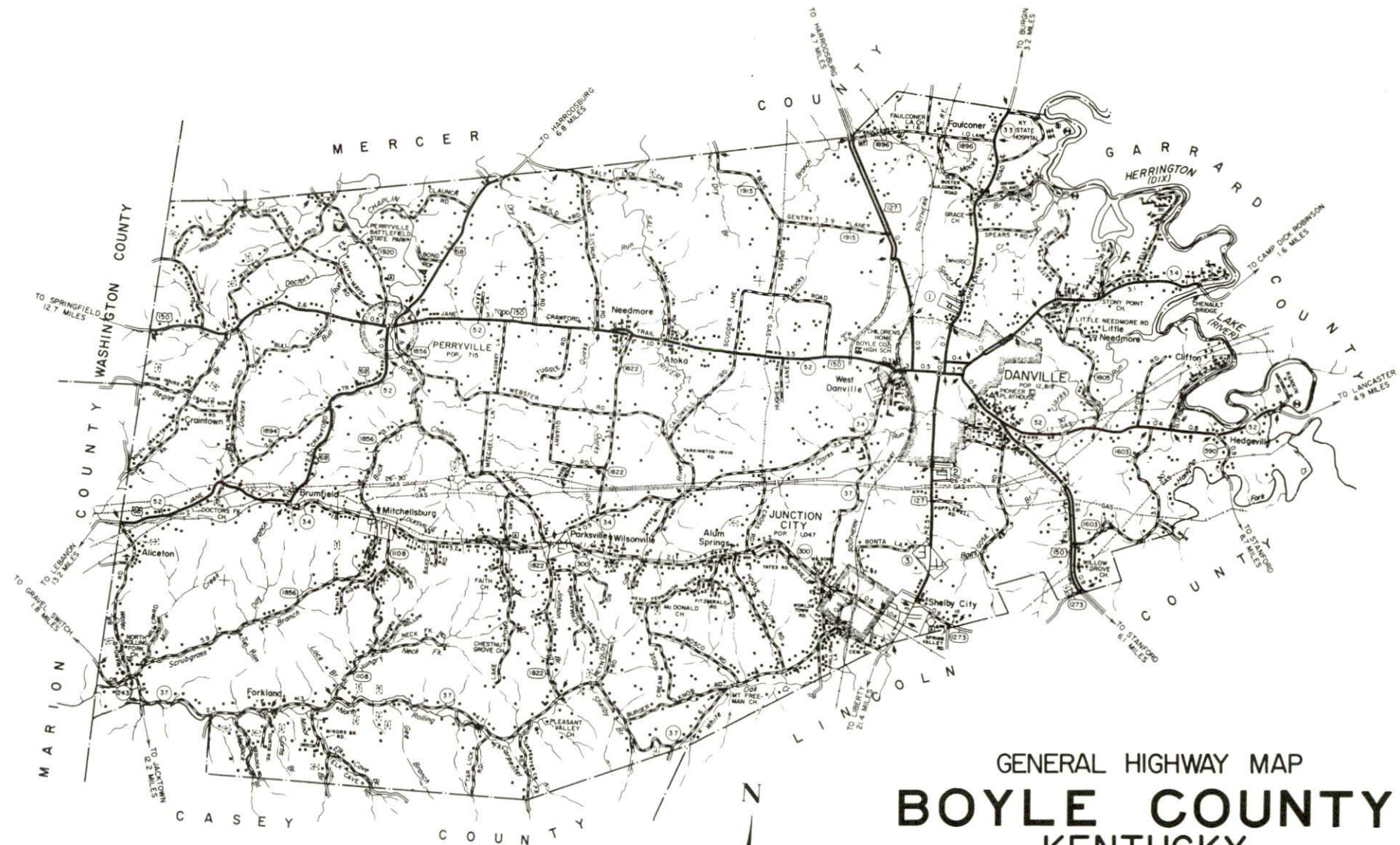
The Danville-Boyle County Chamber of Commerce

1972

TABLE OF CONTENTS

<u>Chapter</u>	<u>Page</u>
INDUSTRIAL SITES	i
DANVILLE, KENTUCKY - A RESOURCE PROFILE.	1
THE LABOR MARKET.	5
Population Trends	5
General Employment Characteristics, 1970	5
Manufacturing Employment Trends by Industry.	6
Danville Manufacturing Firms, Their Products and Employment	6
Wage Rates for Selected Occupations	7
Labor Organizations	8
Current and Future Labor Supply	8
Total Personal Income	8
Per Capita Personal Income	8
EDUCATION	11
Public Schools	11
Special Schools	11
Vocational Schools	12
Colleges and Universities	12
TRANSPORTATION	16
Rail.	16
Truck Service	16
Air	17
Bus	17
Taxi.	17
Rental Services.	17
POWER AND FUEL	18
Electricity	18
Natural Gas	18
WATER AND SEWERAGE	19
Water	19
Sewerage	20

<u>Chapter</u>	<u>Page</u>
LOCAL GOVERNMENT	21
City	21
County	21
Assessed Value of Property, 1971	21
Local General Property Tax Rates Per \$100 of Assessed Valuation, 1971	21
Planning and Zoning	22
Safety.	22
Police	22
Fire	22
Rescue Service	22
Ambulance Service	22
Sanitation	23
HEALTH	24
Hospitals	24
Other Health Facilities	24
Nursing Homes	24
Public Health	24
OTHER LOCAL FACILITIES	25
Communications	25
Library Services	25
Religious Institutions	26
Financial Institutions	26
Hotels and Motels	26
Clubs and Organizations	26
RECREATION	27
Local	27
Area	27
AGRICULTURE - NATURAL RESOURCES - CLIMATE.	29
Agriculture	29
Natural Resources	29
Climate	29
HISTORY	30



GENERAL HIGHWAY MAP
BOYLE COUNTY
 KENTUCKY

PREPARED BY THE
 KENTUCKY DEPARTMENT OF HIGHWAYS
 DIVISION OF PLANNING
 IN COOPERATION WITH THE
 U.S. DEPARTMENT OF TRANSPORTATION
 FEDERAL HIGHWAY ADMINISTRATION
 BUREAU OF PUBLIC ROADS
 SCALE 1:125,000



PLYCONIC PROJECTION

ORIGINAL DATA	
1969	
REVISIONS	
DATE BY	DATE BY



AERIAL VIEW - DANVILLE, KENTUCKY

DANVILLE LABOR MARKET AREA

*Shaded area denotes labor market area



DANVILLE, KENTUCKY - A RESOURCE PROFILE

Location

Danville, county seat of Boyle County, is in the central portion of Kentucky. The county is a part of the Bluegrass region, and its southwestern corner extends into the Knobs. Its eastern border follows Herrington Lake on Dix River. Its 183 square miles of territory range from gently rolling to hilly terrain.

Danville is no typical small town. It was designated "All American City" in 1968 and "All Kentucky City" in 1971. Today, with a population of 11,542, Danville is progressing swiftly, but also maintaining a beautiful image of the past.

Danville is 35 miles from Lexington, 80 miles from Louisville, and 109 miles from Cincinnati, Ohio. Its central location in a centrally located state, and accessibility to Kentucky's new modern highway system has made Danville an attractive prospect as a distribution center and manufacturing site for industry.

The Economic Framework

Total employment in Boyle County averaged 10,500 jobs in 1970 with manufacturing providing 2,400 of these jobs. Manufacturing employment has increased 43.5 percent or 734 jobs since June 1961. The American Greeting Card Company's Danville plant is utilized as a distribution center and provides more than 600 jobs. The major local industrial products are glass bulbs and tubing, ladies' shoes, upholstered furniture, men's suits and household trash compactors.

Per capita income in the county in 1969 was \$3,030, an increase of 95 percent since 1959.

Danville is the hub of a labor market area that includes Boyle and the six surrounding counties. Area employment in 1971 totaled 35,200 jobs. Since 1961, area industrial employment has had the sharpest gains in the apparel and machinery and metal products industries.

Despite important industrial gains in recent years, the area has a deficit of 2,297 manufacturing jobs when measured against the national industrial employment-population ratio. This indicates an area where the potential for additional manufacturing production is excellent.

Resources for Growth

1. There is a current labor supply of 5,000 men and 3,025 women available for industrial jobs in the labor market area. In addition, 5,575 young men and 5,270 young women will become 18 years of age by 1978 and potentially available for work.

2. The local transportation capability is good. The Southern Railway System serves Danville with a variety of services including piggyback. There is easy access to Interstate 75 and Interstate 64, which are major highway arteries to the industrial south, midwest, and east. The Blue Grass Parkway only a short distance to the north is an important link to the west. Ten separate trucking companies serving Danville make delivery time competitive with most shipping points within the general market area. The local airport provides charter service, and commercial air service is available in Lexington, 35 miles north of Danville.

3. Energy - Natural gas service is provided by Western Kentucky Gas Company and electricity by Kentucky Utilities Company. The local raw water supply from Herrington Lake is more than adequate for continued growth.

4. Industrial sites - Danville has seven available industrial sites, totaling 277 acres, with all utilities.

5. Education is an important growth asset for Danville. The city and county school systems are rated among the most outstanding in Kentucky.

Nine senior colleges are within 50 miles of Danville, with the University of Kentucky only 35 miles away. At Danville is Centre College, chartered in 1819. During the 1960's Centre College's capital resources were doubled, eleven new buildings were added, the enrollment enlarged from 450 to 750. In 1970 Centre became one of the smallest of the 199 institutions now sheltering local chapters of Phi Beta Kappa.

Since 1904 Centre College has been a member of the Southern Association of Colleges and Schools and also holds membership in the Association of American Colleges. Governed by a self perpetuating board of trustees, Centre is affiliated with the United Presbyterian Church in the United States of America and the Presbyterian Church in the United States.

Financial support for Centre's operating costs is partially covered by the income from endowment funds accumulating over a period of years. Value in 1970 was in excess of \$7,000,000. The income from this fund creates numerous scholarships that are annually awarded to Centre students. Gifts to the Development Fund totaled \$1,399,821 for the 1969-70 fiscal year.

Community Programs for Improvement

Cooperation, planning, and action have resulted in successful community programs and industrial expansion for Danville. Public and private utilities are continuing in their plans for community improvements.

The Danville Independent School System has under consideration approximately 20 new programs. These include a new facility addition at Mary Hogsett Elementary School and the development of many new academic programs.

The Boyle County School System has completed the construction of a new elementary school, and added several new courses to the high school curricula in 1971.

Danville has plans to revitalize the downtown area. The long-range plan provides for the construction of mall-type shopping centers. Property has already been acquired to provide for off-street parking within the Core Area.

The City of Danville has made improvements in its city services, and plans are being made for further improvements. In 1971 the city rebuilt streets within new subdivisions. The rescue squad recently purchased a new ambulance and now provides three ambulances to serve the Danville area. The police department is in the process of developing a teletype system to serve the surrounding seven-county area.

Approximately 100 units of public housing are located in the eastern and northern sections of the city.

The City of Danville's urban renewal program is restoring the section in and around the McDowell Home itself, and completely renovating Constitution Square. The city is planning to expand the sewage treatment plant with the addition of another lagoon of approximately 4,000,000-gallon capacity to provide excess flow during extremely wet weather. The Hospital Board has plans for a new full-service hospital; the site has been purchased.

Danville's recreational and cultural future has also been taken into consideration. A new golf course and swimming pool have just been completed by private interests adjacent to the eastern city limits.

Presently under construction on the Centre College campus is a \$5,500,000 Fine Arts building. This addition is designed to serve the college and the community. This should become a cultural center unequalled in any other community of this size.

Retail and service facilities are being increased and expanded. Eight retail and service establishments moved into Danville in 1971. One shopping center with 15 retail and service establishments opened in 1971. Another shopping center which is to have approximately 10 new retail and service establishments is to be completed in the very near future.

The two major bus lines now have a consolidated terminal located on South Second Street. The building used has undergone complete remodeling. This consolidation enables the two companies to provide full terminal services.

Recreation, Entertainment, and Livability

Danville's location in the heart of Kentucky places it in the center of numerous recreation and entertainment facilities.

Herrington Lake, 4 miles from the city, is 36 miles long with many private and commercial camps, offering a variety of water sports. Lexington, 35 miles north, offers sophisticated entertainment, as well as cultural and sporting events. Louisville, 70 miles northwest from Danville, offers the same sophisticated entertainment, adding more emphasis on sporting events. It could be said that both cities provide perhaps the world's most classic thoroughbred racing events.

With the modern interstate highway system available to Danville, it not only brings Louisville and Lexington closer, but with a few more minutes of traveling brings Cincinnati, Ohio, within the range of travel for those who enjoy cultural entertainment, such as the renowned world Cincinnati Symphony Orchestra and the Summer Opera. In the sports world, Cincinnati is distinguished in having four professional teams: Hockey, Baseball, Football, and Basketball.

Within the city limits, Danville offers much in entertainment both in public and private facilities. Offering in sports include golf, swimming, tennis, football and baseball. Several public parks and playgrounds provide recreation for all age groups.

Pioneer Playhouse, the State Theater of Kentucky, brings summer stock theater to Danville during June, July and August. The Legend of Daniel Boone is performed nightly during the summer months at nearby Harrodsburg. In addition to these cultural events, Centre's new Fine Arts building will combine under one roof. The individual ideal environments for the respective needs of music, drama and the plastic arts.

THE LABOR MARKET

POPULATION TRENDS ^{1/}

<u>Area</u>	<u>Population</u>			<u>Percent Change</u>	
	<u>1970</u>	<u>1960</u>	<u>1950</u>	<u>1960-70</u>	<u>1950-60</u>
Danville	11,542	9,010	8,686	+28.1	+ 3.7
Labor Market Area	103,542	104,485	112,307	- 0.9	- 7.0
Boyle County	21,090	21,257	20,532	- 0.8	+ 3.5
Casey County	12,930	14,327	17,446	- 9.8	-17.9
Garrard County	9,457	9,747	11,029	- 3.0	-11.6
Lincoln County	16,663	16,503	18,668	+ 1.0	-11.6
Marion County	16,714	16,887	17,212	- 1.0	- 1.8
Mercer County	15,960	14,596	14,643	+ 9.3	- 0.3
Washington County	10,728	11,168	12,777	- 3.9	-12.6

GENERAL EMPLOYMENT CHARACTERISTICS, 1970 ^{2/}

<u>Major Employment Group</u>	<u>Employment</u>	
	<u>Boyle County</u>	<u>Labor Market Area</u>
TOTAL	10,500	35,200
Agricultural	900	8,600
Nonagricultural	9,600	26,600
Manufacturing	2,900*	7,800*
Trade and Services	2,637	6,554
Government	1,700	4,300

*Includes employment of one establishment now listed as a wholesale distribution center.

MANUFACTURING EMPLOYMENT TRENDS BY INDUSTRY
JUNE 1971 AND 1961 ^{3/}

Industry	Boyle County			Labor Market Area		
	1971	1961	% Change	1971	1961	% Change
TOTAL	3,022	1,688	+ 79.0	8,139	4,533	+ 79.5
Food & kindred products	117	140	- 16.4	420	538	- 21.9
Tobacco	3	19	- 84.2	118	32	+ 268.8
Apparel, textiles, leather	1,106	894	+ 23.7	3,314	2,486	+ 33.3
Lumber & furniture	204	70	+191.4	769	358	+ 114.8
Printing, publishing, paper	647*	82	+689.0	692*	124	+ 458.1
Chemicals, petroleum, coal, rubber	22	8	+175.0	129	8	+1512.5
Stone, clay & glass	545	437	+ 24.7	836	458	+ 82.5
Primary metals	0	0	--	4	0	--
Machinery & metal products	378	35	+980.0	1,042	223	+ 367.3
Other	0	3	--	815	306	+ 166.3

*Includes employment of one establishment reported as manufacturing operation, which is now listed as a wholesale distribution center.

DANVILLE MANUFACTURING FIRMS,
THEIR PRODUCTS AND EMPLOYMENT ^{4/}

Firm	Product	Employment		
		Total	Male	Female
Bluegrass Plant Food, Inc.	Fertilizer	17	14	3
Bluegrass Printing Co.	Lithograph printing, letter press printing	6	6	0
Boyle Block Co.	Concrete block	14	13	1
Fred Cain Farm Equipment Co.	Field tillers, tractor accessories	24	22	2
Caldwell Stone Co., Inc.	Agriculture lime	23	23	0
Coca-Cola Bottling Works	Carbonated beverages	19	19	0
Corning Glass Works	Glass bulbs, tubing	500	300	200
Crofton, Inc.	Foam rubber	7	5	2
Danville Advocate-Messenger Co., Inc.	Newspaper, offset printing, letter press printing	41	26	15
Danville Construction Co.	Asphalt paving	30	30	0
Danville Wire & Cable Co.	Steel wire and cable		N. A.	
Dr. Pepper Bottling Co.	Carbonated beverages	10	10	0
Genesco, Inc.	Ladies' shoes	400	100	300

(cont.)

<u>Firm</u>	<u>Product</u>	<u>Employment</u>		
		<u>Total</u>	<u>Male</u>	<u>Female</u>
Jackson of Danville	Upholstered chairs, sofas	203	147	56
Kentucky Kandies	Candy, barbecue sauce, pancake syrup	6	1	5
Palm Beach Co.	Men's suits	603	25	578
Ready Mix Concrete Co.	Ready mix concrete	16	16	0
Royal Crown Bottling Co.	Soft drinks	41	38	3
Royal Industries	Friction brake lining, disc pads	60		
Sellers Engineering Co.	Boilers, commercial gas fired water heaters	35		
Stevens Concrete Co., Inc.	Ready mixed concrete	10	9	1
Whirlpool Corp.	Trash compactors	210	186	24

WAGE RATES FOR SELECTED OCCUPATIONS
DANVILLE, KENTUCKY ^{5/}

<u>Classification</u>	<u>Wages Per Hour</u>		
	<u>Starting</u>	<u>Maximum</u>	<u>Prevailing</u>
<u>Production Employees</u>			
Assembler	\$1.90	\$2.90	\$2.30
Inspector	1.90	2.90	2.30
Production Laborer	1.80	2.30	2.00
Welder, Arc or Acetylene (Class-A)	2.20	3.20	2.60
<u>Service Employees</u>			
Electrician (Class-A)	\$3.25	\$4.75	\$3.90
Laborer	1.70	2.50	1.95
Machinist	2.50	3.25	2.90
Mechanic, Maintenance	2.50	3.50	3.00
Truck Driver, Industrial (Class-A)	2.25	3.20	2.75
<u>Office Employees</u>			
Bookkeeper	\$2.50	\$3.50	\$2.95
File Clerk	1.75	2.15	1.95
Receptionist	1.75	2.15	1.95
Secretary	2.50	3.25	3.00
Typist	1.85	2.25	2.05

LABOR ORGANIZATIONS

<u>Union</u>	<u>Representing Workers at:</u>
American Flint Glass Workers Union of North America	Corning Glass Works
Upholsterers International of North America	Jackson of Danville
United Steel Workers of America	Royal Industries
Amalgamated Clothing Workers of America	Palm Beach Company

CURRENT AND FUTURE LABOR SUPPLY -
DANVILLE LABOR MARKET AREA

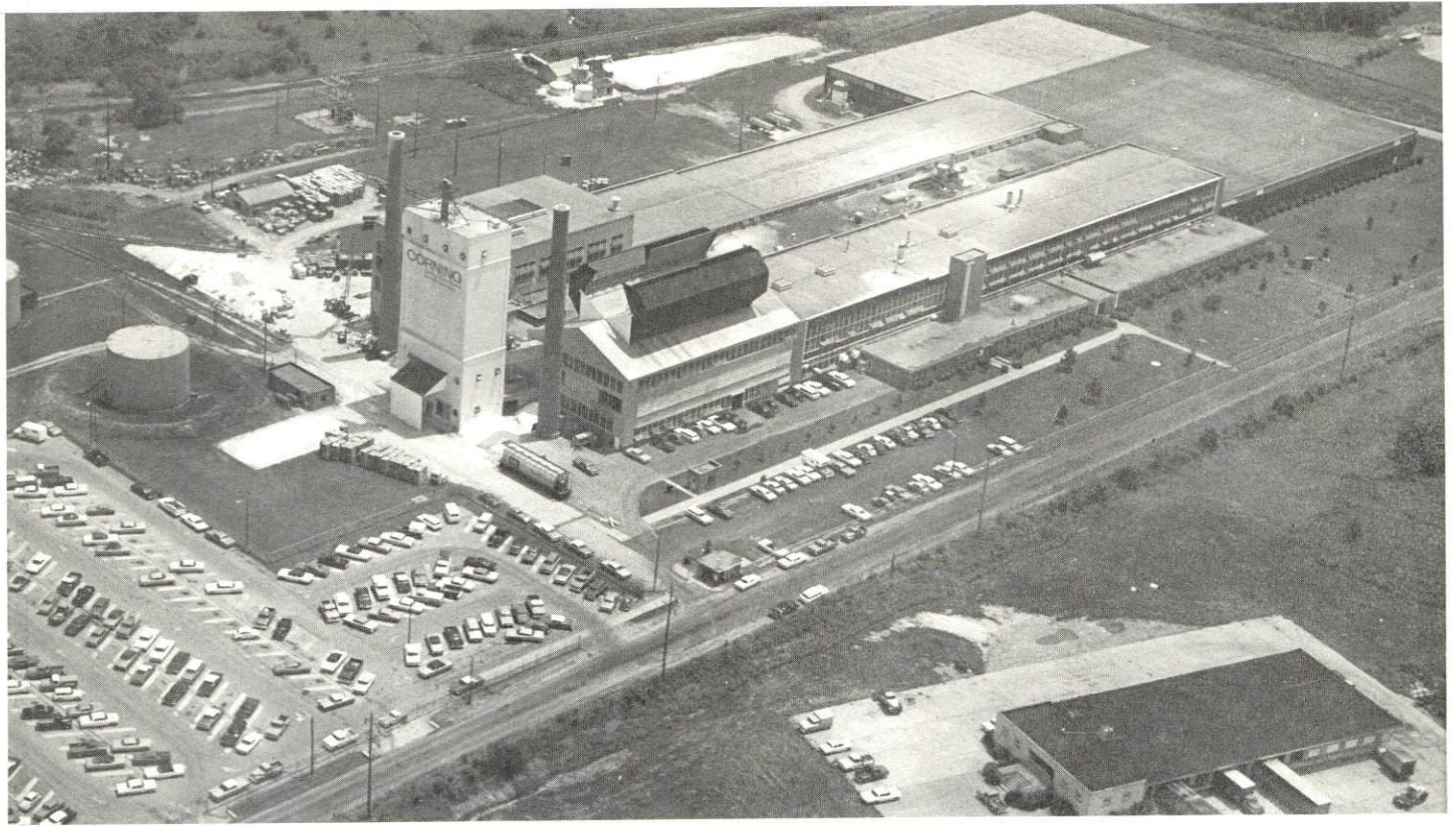
<u>Area</u>	<u>Current Labor Supply, 1971 ^{6/}</u>			<u>Future Labor Supply by 1978 ^{7/}</u> <u>(Becoming 18 Years of Age)</u>		
	<u>Total</u>	<u>Male</u>	<u>Female</u>	<u>Total</u>	<u>Male</u>	<u>Female</u>
Labor Market Area	8,035	5,008	3,027	10,853	5,577	5,276
Boyle County	803	503	300	2,030	1,019	1,011
Casey County	1,875	1,102	773	1,417	737	680
Garrard County	606	464	142	927	483	444
Lincoln County	2,086	1,384	702	1,745	893	852
Marion County	900	593	307	2,041	1,037	1,004
Mercer County	632	389	243	1,546	820	726
Washington County	1,133	573	560	1,147	588	559

TOTAL PERSONAL INCOME ^{8/}

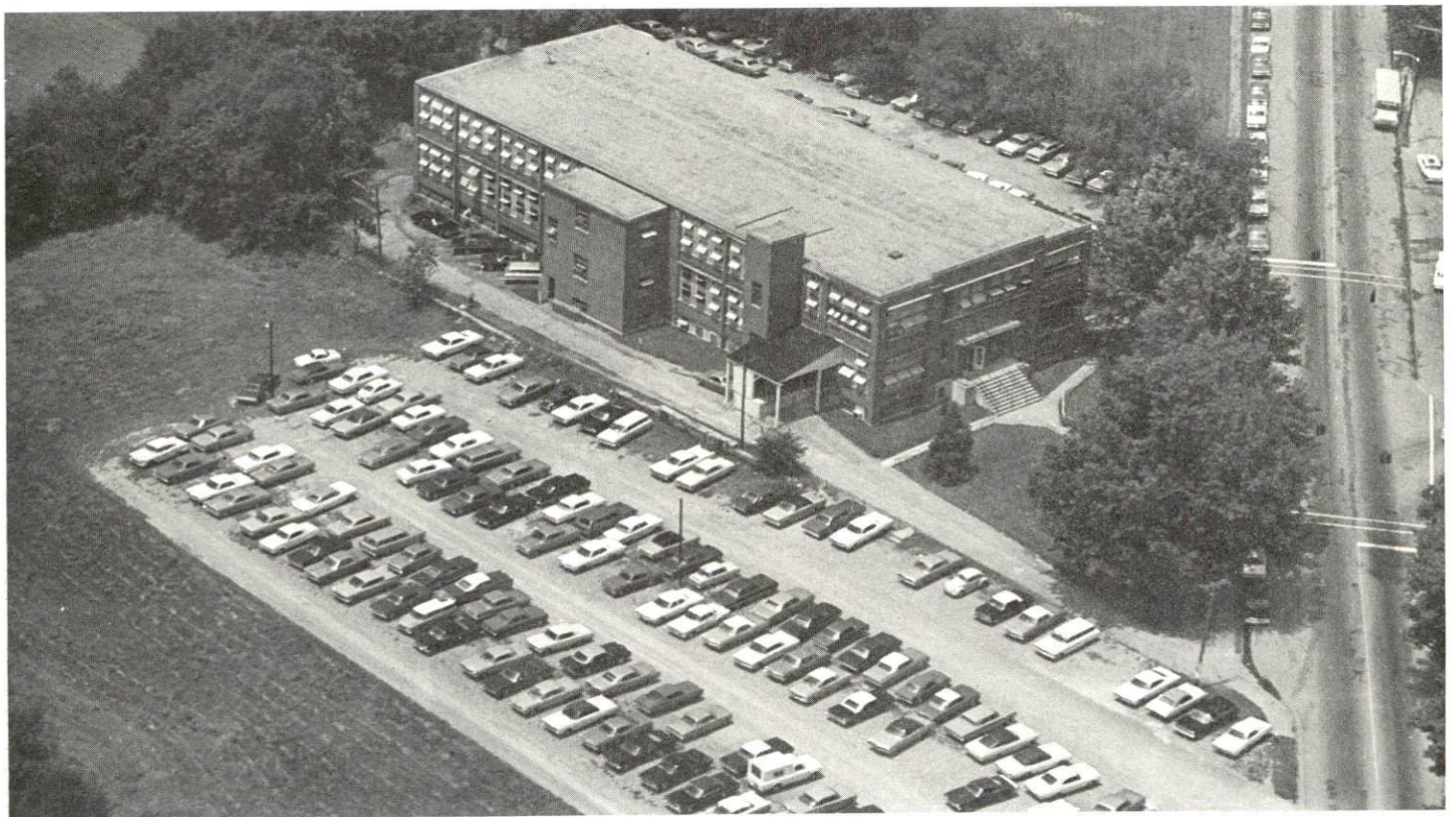
<u>Area</u>	<u>1969</u>	<u>1959</u>	<u>% Change</u>
Boyle County	\$ 67,610,000	\$ 34,033,000	+98.6
Labor Market Area	231,758,000	117,739,000	+96.8
Kentucky	9,202,000,000	4,655,000,000	+97.6

PER CAPITA PERSONAL INCOME ^{9/}

<u>Area</u>	<u>1969</u>	<u>1959</u>	<u>% Change</u>
Boyle County	\$3,030	\$1,555	+94.8
Labor Market Area	\$1,540 to 3,030	\$690 to 1,555	N. A.
Kentucky	2,847	1,552	+83.4



CORNING GLASS WORKS



PALM BEACH COMPANY



DANVILLE WIRE & CABLE COMPANY



WHIRLPOOL CORPORATION

EDUCATION

Public Schools

	<u>Danville</u>	<u>Boyle County</u>
Total Enrollment	2,512	2,262
Elementary	1,331	1,652
Junior High	461	
High School	720	610
Student-Teacher Ratio	21-1	18-1
Elementary	23-1	17-1
Junior High	23-1	
High School	20-1	18-1
State Rating of High School	Comprehensive	Comprehensive
Other Accreditations	Southern Association of Colleges and Schools	
Percent High School Graduates to College	66.0	35.0
Current Expenditures Per Pupil	\$493.30	\$456.91
Bonded Indebtedness, June 30, 1971	\$1,887,000	\$2,451,000

Special Schools

	<u>Kentucky School for the Deaf</u>
Total Enrollment	395
Elementary	295
High School	100
Student-Teacher Ratio	9-1
Elementary	9-1
High School	10-1
State Rating of High School	Basic

Vocational Schools

	<u>Nearest Area School</u>	<u>Nearest Extension Center</u>
Location	Central Kentucky Area Vocational School Lexington	Harrodsburg Extension Center Harrodsburg
Miles Distant	35	9
Curriculum	Accounting Jr. Management General Clerical Secretarial-Steno Distributive Education Practical Nursing Electronics (Communications) Technical Drafting Auto Body Repair Auto Mechanics Commercial Foods Cosmetology Drafting Electricity Machine Shop Office Machine Repair Printing Radio and TV Repair Sheet Metal Tool and Die Making Welding	General Clerical Secretarial-Steno Auto Mechanics Carpentry Electricity Welding

Colleges and Universities

<u>Name</u>	<u>Area - Within 50 Miles</u>		<u>Highest Degree Conferred</u>
	<u>Location</u>	<u>Enrollment</u>	
Centre College	Danville	717	Baccalaureate
Berea College	Berea	1,448	Baccalaureate
Eastern Kentucky University	Richmond	10,171	Masters
University of Kentucky	Lexington	19,258	Ph. D., D. M. D., M. D., J. D.
Asbury College	Wilmore	1,032	Baccalaureate
Campbellsville College	Campbellsville	856	Baccalaureate
Transylvania University	Lexington	775	Masters
Southeastern Christian College	Winchester	122	Associate
Saint Catharine Academy	St. Catharine	141	Associate
Kentucky State College	Frankfort	1,970	Baccalaureate



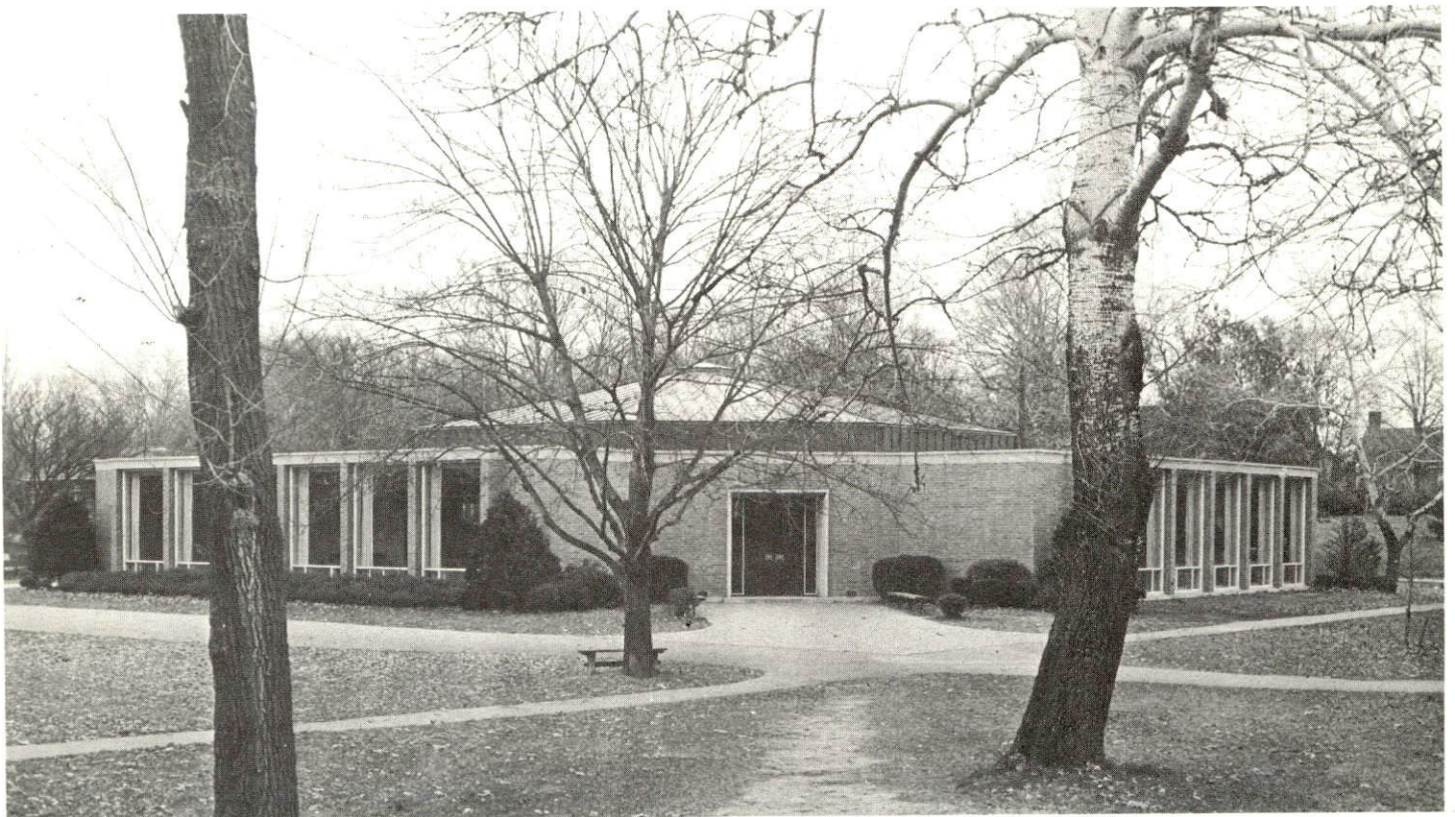
DANVILLE HIGH SCHOOL



BOYLE COUNTY HIGH SCHOOL



JENNIE ROGERS SCHOOL



CENTRE COLLEGE DINING COMMONS

TRANSPORTATION

Rail

Line serving Danville - Southern Railway System

Services, Freight, switching, piggyback facilities, REA Express pickup and delivery

RAILWAY TRANSIT TIME FROM DANVILLE, KENTUCKY, TO: 10/

City	No. of Days		City	No. of Days	
	CL	CL		CL	CL
Atlanta, Ga.	2		Los Angeles, Calif.		7
Birmingham, Ala.	2		Louisville, Ky.		1
Chicago, Ill.	3		Nashville, Tenn.		3
Cincinnati, Ohio	1		New Orleans, La.		3
Cleveland, Ohio	3		New York, N. Y.		5
Detroit, Mich.	3		Pittsburgh, Pa.		3
Knoxville, Tenn.	1		St. Louis, Mo.		2

Truck Service

Company

Home Office

Best Way Express, Inc.	Nashville, Tennessee
Cooper-Jarrett, Inc.	Orange, New Jersey
Davenport's Transfer	Harrodsburg, Kentucky
Distillery Transfer Service, Inc.	Bardstown, Kentucky
Lawrenceburg Transfer Co.	Lawrenceburg, Kentucky
McLean Trucking Company	Winston-Salem, North Carolina
McDuffee Motor Freight, Inc.	Lebanon, Kentucky
O.K. Trucking Co., Inc.	Cincinnati, Ohio
Smith's Transfer Corporation of Virginia	Staunton, Virginia
Turner Expediting Service	Louisville, Kentucky
United Parcel Service	Louisville, Kentucky

HIGHWAY MILES AND TRUCK TRANSIT TIME IN DAYS FROM
DANVILLE, KENTUCKY, TO SELECTED MARKET CENTERS

City	Highway Miles	Delivery Time ^{11/}		City	Highway Miles	Delivery Time	
		LTL	TL			LTL	TL
Atlanta, Ga.	367	2	1	Los Angeles, Calif.	2,187	7	4
Birmingham, Ala.	310	2	1	Louisville, Ky.	80	1	1
Chicago, Ill.	378	2	1	Nashville, Tenn.	193	2	1
Cincinnati, Ohio	109	1	1	New Orleans, La.	709	4	2
Cleveland, Ohio	357	2	1	New York, N. Y.	787	3	2
Detroit, Mich.	378	2	1	Pittsburgh, Pa.	432	2	1
Knoxville, Tenn.	169	2	1	St. Louis, Mo.	344	2	1

Air

	<u>Local</u>	<u>Nearest Commercial</u>
Location:	Goodall Field Danville	Blue Grass Field Lexington, 35 miles from Danville
Runways:	2 paved Length: 2,400 feet; 3,400 feet	3 paved 3,500 feet; 3,500 feet; 6,500 feet
Traffic Control:	Wind sock	Tower: Guards, approach control, ground control, ILS system
Lighting:	Sundown to sunrise	Approach lighting system, beacon, runways, obstruction lighted
Services:	80-100 octane, charter service, tie down, hangar, flight instruction, aero crop spraying	80, 100 and 145 octane fuel; jet fuel; major A & E repairs; storage; Weather Bureau; flight instruction; charter service; taxi; U-Drive-It service; Eastern, Delta, Piedmont and Allegheny Airlines

Bus

Southern Greyhound, Trailways Bus Lines

Taxi

Three cab companies - 24-hour, radio-dispatched service

Rental Services

Car, trailer and truck rentals

POWER AND FUEL

Electricity

Company serving Danville - Kentucky Utilities Company

Source of power - Kentucky Utilities Company

Total generating capacity - 1,215,000 KW

Industrial rates furnished by - Kentucky Utilities Company, Danville,
Kentucky

Company serving Boyle County - Inter-County RECC

Source of power - East Kentucky Power Cooperative

Total generating capacity - 548,000 KW

Industrial rates furnished by - Inter-County RECC, Danville, Kentucky

Natural Gas

Company serving - Western Kentucky Gas Company

Source of supply - Tennessee Gas Pipeline Company

Size of transmission mains - 20 and 30 inches (supplier); 6 and 4 inches
(distributor)

Distribution mains - 2 to 8 inches

Btu content - 1,018

Specific gravity - .60

Distribution pressure - 4 oz. to 60 psi

Rates - Industrial rates will be furnished by the Western Kentucky Gas
Company, Danville office.

WATER AND SEWERAGE

Water

Company serving Danville - Danville Water Department
Source - Herrington Lake (Dix River)
Treatment plant capacity - 5,000,000 gpd
Average daily consumption - 2,500,000 gallons
Peak daily consumption - 3,100,000 gallons
Type treatment - Lime, alum, chlorine, fluoride, flocculation,
sedimentation, filtration
Storage capacity - 3,250,000 gallons
Size mains - 10, 8, and 6 inches
Average pressure - 70 psi
Average temperature - 50° F.

MONTHLY WATER RATES FOR WHOLESALE AND INDUSTRIAL CONSUMERS

First	20,000 cu. ft.	\$60.00 (Minimum monthly bill)
Next	80,000 cu. ft.	.20 per 100 cu. ft.
Next	100,000 cu. ft.	.18 per 100 cu. ft.
Next	300,000 cu. ft.	.16 per 100 cu. ft.
Next	500,000 cu. ft.	.14 per 100 cu. ft.
All over	1,000,000 cu. ft.	.12 per 100 cu. ft.

Name of water district - Lake Village Water Association, Inc.
Area served - Northeast Boyle County
Date when water district began operating - January 1971
Source of supply of treated water - Danville Water Department
Average amount of water used in a 24-hour period - 40,000 gallons
Water district storage capacity - 47,000 gallons
Average pressure - 100 psi
Average temperature - 58° F.
Size mains - 6-inch

Rates - First	1,000 gallons	\$6.00 (Minimum)
Next	2,000 gallons	2.25 per 1,000 gallons
Next	1,500 gallons	1.75 per 1,000 gallons
Next	1,500 gallons	1.25 per 1,000 gallons
All over	6,000 gallons	1.00 per 1,000 gallons

Surface water sources - Kentucky and Dix Rivers

Average discharge - Dix River near Danville 422 cfs (28 years, USGS)

Expected ground water yield - 5 to 50 gpm in central and extreme eastern portions of Boyle County; 5 gpm or less over remainder of county

Sewerage

Company serving - Danville Water Department

Design capacity - 2,200,000 gpd

Average daily flow - 1,700,000 gallons

Treatment - Secondary

Type treatment - Clarifier, drying beds

Treated effluent discharged into - Clarks Run Creek

Size of sanitary mains - 24 inches

Size of storm mains - 30 inches

Rates - 40 percent of monthly water bill

LOCAL GOVERNMENT

City

Structure - Mayor - 4-year term; 4 councilmen - 2-year terms;
 City manager
 Budget 1971-72 - General Fund \$670,356; Water and Sewer Fund
 \$470,630
 Fees and licenses - Occupation license - \$25 per year; payroll tax -
 1 percent of gross wages; vehicle tax - \$10 per year

County

Structure - County Judge - 4-year term; 6 magistrates - 4-year terms
 Budget 1971-72 - General Fund \$159,027; Road Fund \$133,700

Assessed Value of Property, 1971

<u>Classes of Property*</u>	<u>Danville</u>	<u>Boyle County</u>
Real Estate	\$47,895,301	\$108,328,597
Tangibles	4,058,717	36,751,087
Public Service	5,227,422	26,361,149 (1970)

Local General Property Tax Rates Per \$100 of Assessed Valuation, 1971 ^{12/}

<u>Taxing Unit**</u>	<u>Danville</u>	<u>Boyle County</u>
State	\$.015	\$.015
County***	.165	.165
School	.858	.621
City	.380	
Total	\$1.418	\$.801

*Property assessed at 100 percent of fair value.

**Manufacturing machinery, raw materials inventories and goods in process inventories are not subject to local tax. State rate is only \$.15 per \$100.

***\$.03 levy not included in the total (\$.165); applies in unincorporated area of the county for fire protection.

Planning and Zoning

Agency - Danville-Boyle County Planning Commission
Plans completed - Base Map, Existing Land Use Map, Existing Land Use Analysis, Land Use Plan, Transportation Plan, Subdivision Regulations, Zoning Ordinance, Public Improvements Program, Capital Improvements Budget, Community Facilities Plan
Codes adopted - Building, Housing, Plumbing, Electric, Fire, and Gas Codes
Other programs - Workable Program for Community Improvement (Model City)

Safety

<u>Police</u>	<u>Danville</u>	<u>Boyle County</u>
Total staff	24	5
Radio-patrol cars	4	4
Other equipment	1 radar unit	standard

Fire

American Insurance Association Fire Rating	6	
Full-time staff	20	
Volunteers	20	80 (approx.)
Equipment:		
1,000 gpm pumpers	3	
750 gpm pumpers	1	5
1,600 gal. tanker		1
1,000 gal. tankers		2
ladder truck	1	
utility truck	1	
Other	Mutual aid service from surrounding area	

Rescue Service

Danville-Boyle County Rescue Squad:
Number of volunteers - 30
Equipment - 3 radio-dispatched trucks
Personnel training - Standard and advanced first aid

Ambulance Service

Junction City and Perryville provide ambulance service in the county area, with one ambulance in each town.

Sanitation

	<u>Danville</u>		<u>Boyle County</u>
Type service	municipal	private contractors	private contractor
Cost:			
residential	none		\$3 monthly
business	none	contract	contract
Collection frequency:			
residential	twice weekly		weekly
business	daily	contract	contract
Trash pickup	monthly		
Disposal method	sanitary land fill	sanitary land fill	sanitary land fill

HEALTH

Hospitals

	<u>Number</u>	<u>Beds</u>
General Hospital	1	100
Psychiatric Hospital	1	848

General Hospital facilities - 3 operating rooms, recovery room, X-ray and pathology equipment, laboratory, 4-bed intensive care unit and drug dispensary unit

Medical staff - 13 general practitioners, including general surgeons, 9 specialists, 34 registered nurses, 64 licensed practical nurses and graduate licensed practical nurses, 28 aides and 1 pharmacist (part-time)

Other Health Facilities

Mental Health and Retardation facility - Southern Blue Grass Comprehensive Care Center (Region C)

Staff - 1 psychiatrist, 2 psychologists, 5 social workers, 1 registered nurse and 1 alcoholic therapist

Nursing Homes

	<u>Number</u>	<u>Beds</u>
Extended care homes	1	50
Personal care homes	1	60

Public Health

Facility - Boyle County Health Center

Staff - 1 medical doctor (part-time), 1 dentist (part-time), 1 nurse, 1 TB project nurse (part-time), sanitarian, state plumbing inspector (part-time), 1 clerk

Budget 1971-72 - \$34,324.50

OTHER LOCAL FACILITIES

Communications

Telephone - South Central Bell Telephone Company
Services - All standard services, touch tone

Telegraph - Western Union
Services - Telephone

Postal - U. S. Post Office
Class - First
Mail received - 4 times daily
Mail dispatched - 2 times daily

Newspapers - Danville Advocate-Messenger
Daily and circulation - 7,000
Other - Kentucky Advocate (Sunday)
Other papers received from - Major cities

Radio - WHIR-AM; WMGE-FM
Stations received from - Louisville and Lexington, Kentucky;
Cincinnati, Ohio

Television -
Cable service
Reception from - Louisville and Lexington, Kentucky; Cincinnati, Ohio
Kentucky Educational Television - Lexington transmitter, Channel 8

Library Services

Public Library - Danville Public Library
Size collection - 25,477
Circulation, 1970-71 - 68,062 volumes
Services - Bookmobile; a part of the regional system of libraries
furnishes all library services

Private Library - Grace Doherty Library, Centre College
Size collection - Over 85,000 volumes
Special collections - A wide variety of periodicals, government documents,
pamphlets, recordings, music scores, microfilm, microcards and other
audio-visual material
Services - More than 500 periodicals and more than a dozen newspapers
regularly; music listening facilities and photo duplication service pro-
vided to students

Religious Institutions

Number of churches - 30

Denominations - Apostolic, Baptist, Christian, Church of God, Church of Jesus Christ of Latter Day Saints, Church of Christ, Episcopal, Jehovah's Witnesses, Lutheran, Nazarene, Presbyterian, Roman Catholic, Salvation Army, United Methodist

Financial Institutions

<u>Bank</u>	<u>Statement as of December 31, 1971</u>	
	<u>Assets</u>	<u>Deposits</u>
Bank of Danville	\$11,068,613.60	\$10,209,341.53
The Farmers National Bank	17,985,397.77	16,255,700.14
Citizens National Bank	13,458,214.00	12,353,381.00
<u>Savings and Loan Associations</u>	<u>Assets</u>	<u>Shared Accounts</u>
Central Kentucky Federal Savings & Loan Association	\$ 9,666,374.06	\$ 8,914,542.43
Commonwealth First Federal Savings & Loan Association	11,933,782.85	10,996,151.23

Hotels and Motels

Total Number - 3

Units - 101

Clubs and Organizations

Business and Civic - Chamber of Commerce, Rotary, Lions, Kiwanis, Jaycees, Optimist, Historical Society, Newcomers, Danville Ministerial Association, Jolly Believers, Bar Association, Medical Association

Fraternal - Demolay, American Legion, Shrine, Knights of Columbus, Masons, Knights of Phythias, IOOF

Women's - Garden Clubs, Business & Professional Womens Club, Woman's Club (Junior), DAR, AAUW, Kentucky Club, Ladies Domestic Economy Club, Sunshine Club, Eastern Star, Rebekah

Youth - Boy Scouts, Girl Scouts, FFA, FHA, 4-H, Little League baseball and football

Other - Fish & Game Club, Wilderness Trail Riding Club

RECREATION

Local

Public Recreation Facilities

Supervised program - Danville-Boyle County Recreation Department

Parks - 2

Playgrounds - 8

Swimming pools - 3

Golf course - 1

Tennis courts - 2

Baseball diamonds - 4

Football fields - 4

Private Recreation Facilities

Country clubs - 2

Golf courses - 2

Swimming pools - 7

Movie theaters - 2

Bowling lanes - 1

Tourist Attractions

Constitution Square State Shrine

Old Crow Inn

McDowell Home and Apothecary Shop

Centre College

Wilderness Road Village of the Arts

Cultural Events

Pioneer Playhouse

Community Arts Series

Area (Within 25 miles)

Old Fort Harrod State Park

Perryville Battlefield State Shrine

Shakertown

William Whitley House State Shrine

Isaac Shelby State Shrine

Herrington Lake

Kentucky River

Legend of Daniel Boone (Harrodsburg)



DANVILLE COUNTRY CLUB

AGRICULTURE - NATURAL RESOURCES - CLIMATE

Agriculture 13/

	<u>Boyle County</u>	<u>Labor Market Area</u>
Total land area (acres)	117,200	1,344,000
Percent of area in farm land	89.9	87.0
Number of farms	889	10,075
Average size of farms (acres)	118.5	116.1
1964 value of all farm products	\$5,095,621	\$47,521,034
Value per farm	5,732	4,717
Total crop sales	2,752,700	25,183,807
Total livestock & livestock products	2,326,566	22,302,153
1969 agricultural production included:		
Burley tobacco (lbs.)	4,336,000	42,563,000
Corn (bu.)	304,000	3,785,000
Cattle and calves (number)	27,200	269,600
Hogs and pigs (number)	5,700	73,600
Milk production, 1968 (lbs.)	16,100,000	258,620,000

Natural Resources

Principal mineral resources	Limestone
Other mineral resources	Local vein minerals
Acres of commercial forest land	20,100
Most abundant tree species	White oak, hickory, red oak, ash, maple, red cedar, black walnut

Climate 14/

	<u>Boyle County</u>
Temperature	
Annual mean (30-year record)	55.6 degrees
Average annual 1970	54.5 degrees
Record highest July, 1966 (7-year record)	98.0 degrees
Record lowest January, 1966 (7-year record)	-10.0 degrees
Seasonal heating degree-days (30-year record)	4,683
Precipitation	
Mean annual total (30-year record)	44.73 inches
Mean annual snow and sleet (26-year record)	16.40 inches
Total precipitation 1970	47.50 inches
Mean number days precipitation (26-year record) (.01 inch or more)	129
Average number days thunderstorms (26-year record)	47
Prevailing winds (17-year record)	South

HISTORY

Boyle County lies in the central portion of Kentucky, partly in the Bluegrass Physiographic Region and partly in the Knobs. Its eastern border follows Herrington Lake on Dix River, and Chaplin and Salt Rivers flow through the county. Its 183 square miles of territory range from gently rolling to hilly terrain with rich soil.

The Boyle County area was one of the earliest colonized in Kentucky. James Harrod, the founder of Harrodsburg, in adjoining Mercer County, built a cabin in present-day Danville around 1774. The first settlement was made in 1775, and within a decade enough progress had been made for Danville to become the center for efforts to make Kentucky a state. Beginning in 1784, ten conventions met over a period of eight years in a building on present-day Constitution Square in efforts to lay a basis for statehood. Under the leadership of Samuel McDowell, these conventions led to Kentucky's admission to the Union on June 1, 1792.

Danville served as the seat of Virginian government west of the Allegheny Mountains from 1785 to 1792, and upon Kentucky's admission to the Union, Danville became the first state capitol for a brief time. The first post office west of the Alleghenies was established here in 1792 and the restored structure now sits at Constitution Square near a replica of the Convention Building. An important advance in surgery was made in Danville in 1809, when Doctor Ephraim McDowell performed the first abdominal operation. A shrine has been made of the McDowell residence where the operation was performed.

Two of the state's most prominent educational institutions, Transylvania and Centre Colleges, were founded at Danville. Transylvania was chartered by the Virginia Assembly in 1780, established in 1783, and moved to Lexington in 1788 to merge with Lexington Seminary. Centre was chartered in 1819 and has since produced a host of distinguished alumni, including two United States Vice Presidents, Richard M. Johnson and John C. Breckinridge, Supreme Court Chief Justice Fred Vinson and thirteen United States Senators. One of the country's most respected independent liberal arts colleges, Centre had an enrollment of 717 in 1971. The Kentucky School for the Deaf, established at Danville in 1823, was the first school of its kind to be operated at government expense.

Boyle County was not formed until 1842, after some thirty years of agitation for county status. The state's ninety-fourth county, Boyle was named for John Boyle, a Virginia native who moved to Kentucky, where he was elected to three terms in the United States Congress and served as Kentucky's Chief Justice for 16 years. Danville is the county seat of Boyle

County. The Civil War Battle of Perryville in 1862 was the bloodiest to take place in Kentucky, and a memorial park is maintained at the battle site in Perryville, west of Danville.

In 1850, Boyle County had 9,116 inhabitants. By 1950, the figure had reached 20,532, and by 1960, 21,257. There followed a slight decline to 21,090 in 1970. Danville's population was 11,542 in 1970, and Junction City had 1,046 residents.

There were 10,500 people employed in Boyle County in 1970. Agriculture accounted for 900 of these jobs, with burley tobacco, corn, cattle and milk the principal products. Manufacturing employment has nearly doubled since 1959, reaching 3,000 in 1971. The greatest production is in apparel, paper and glass products. Largest of the county's firms are: American Greetings Corporation, a distribution center for stationery and gift wrap; Palm Beach Company, making men's suits; Corning Glass Works, producing glass bulbs and tubing; and Genesco, Incorporated, which makes women's shoes.

Among noted figures in Boyle County history was James G. Birney, a well-known abolitionist prior to the Civil War who was a presidential candidate of the Liberty Party in 1844.

SOURCES OF INFORMATION

- 1/ U. S. Department of Commerce, Bureau of the Census, Census of Population, 1950, 1960, 1970.
- 2/ Kentucky Department of Economic Security, Division of Research and Statistics.
- 3/ Kentucky Department of Economic Security, Number of Workers in Manufacturing Industries Covered by Kentucky Unemployment Insurance Law Classified by Industry and County, June 1971-1961.
- 4/ Kentucky Department of Commerce, 1972 Kentucky Directory of Manufacturers.
- 5/ Kentucky Department of Economic Security, Division of Employment Services, Danville Office.
- 6/ Kentucky Department of Economic Security, Kentucky Labor Supply Estimates by County, January 1971.
- 7/ Kentucky Department of Commerce, Future Labor Supply by 1978.
- 8/ University of Kentucky, Office of Development Services and Business Research, Total Personal Income for Kentucky.
- 9/ University of Kentucky, Office of Development Services and Business Research, Per Capita Income in Kentucky.
- 10/ Southern Railway System.
- 11/ Smith's Transfer Corp., Staunton, Virginia.
- 12/ Kentucky Department of Revenue, Kentucky Property Tax Rates, 1971.
- 13/ U. S. Department of Commerce, Bureau of the Census, Census of Agriculture, 1964. U. S. Department of Agriculture and Kentucky Department of Agriculture, Kentucky Agricultural Statistics, 1970.
- 14/ U. S. Department of Commerce, Environmental Science Services Administration, Climatological Data, 1970.

All other information was obtained from governmental offices, local businesses and organizations.

This copy has been prepared by the Kentucky Department of Commerce,
Division of Research and Planning, and the cost of printing paid from
state funds.