

1979

Industrial Resources: Breathitt County - Jackson

Kentucky Library Research Collections
Western Kentucky University, spcol@wku.edu

Follow this and additional works at: https://digitalcommons.wku.edu/breathitt_cty

 Part of the [Business Administration, Management, and Operations Commons](#), [Growth and Development Commons](#), and the [Infrastructure Commons](#)

Recommended Citation

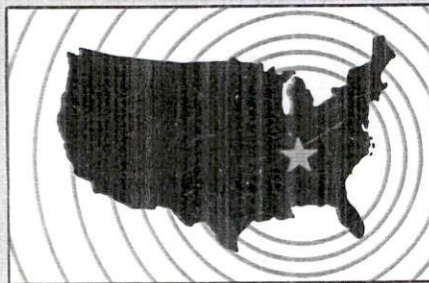
Kentucky Library Research Collections, "Industrial Resources: Breathitt County - Jackson" (1979). *Breathitt County*. Paper 8.
https://digitalcommons.wku.edu/breathitt_cty/8

This Report is brought to you for free and open access by TopSCHOLAR®. It has been accepted for inclusion in Breathitt County by an authorized administrator of TopSCHOLAR®. For more information, please contact topscholar@wku.edu.

INDUSTRIAL RESOURCES

JACKSON

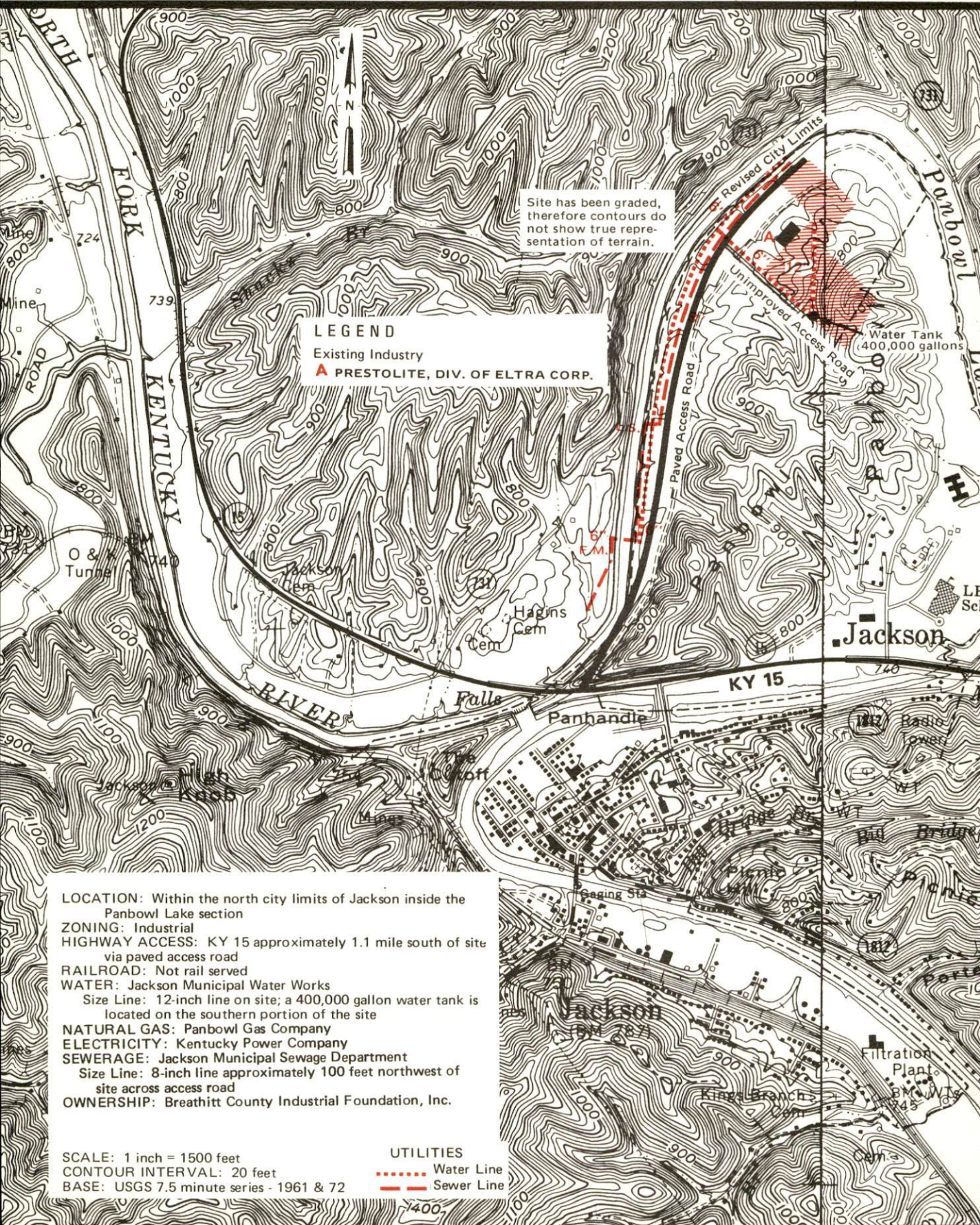
Kentucky
first



DEPARTMENT OF COMMERCE

JACKSON, KENTUCKY --- Site No. 179 --- 24 Acres

For more information contact Mr. Phil Smith, P. O. Box 640, Jackson, Kentucky 41339, or the Kentucky Department of Commerce, Industrial Development Division, Capital Plaza Tower, Frankfort, Kentucky 40601.



Site has been graded, therefore contours do not show true representation of terrain.

LEGEND
Existing Industry
▲ PRESTOLITE, DIV. OF ELTRA CORP.

LOCATION: Within the north city limits of Jackson inside the Panbowl Lake section
ZONING: Industrial
HIGHWAY ACCESS: KY 15 approximately 1.1 mile south of site via paved access road
RAILROAD: Not rail served
WATER: Jackson Municipal Water Works
 Size Line: 12-inch line on site; a 400,000 gallon water tank is located on the southern portion of the site
NATURAL GAS: Panbowl Gas Company
ELECTRICITY: Kentucky Power Company
SEWERAGE: Jackson Municipal Sewage Department
 Size Line: 8-inch line approximately 100 feet northwest of site across access road
OWNERSHIP: Breathitt County Industrial Foundation, Inc.

SCALE: 1 inch = 1500 feet
 CONTOUR INTERVAL: 20 feet
 BASE: USGS 7.5 minute series - 1961 & 72

UTILITIES
 Water Line
 - - - - - Sewer Line

INDUSTRIAL RESOURCES

JACKSON, KENTUCKY

Prepared by
The Kentucky Department of Commerce
Division of Research and Planning
in cooperation with
The Breathitt County Industrial Foundation, Inc.

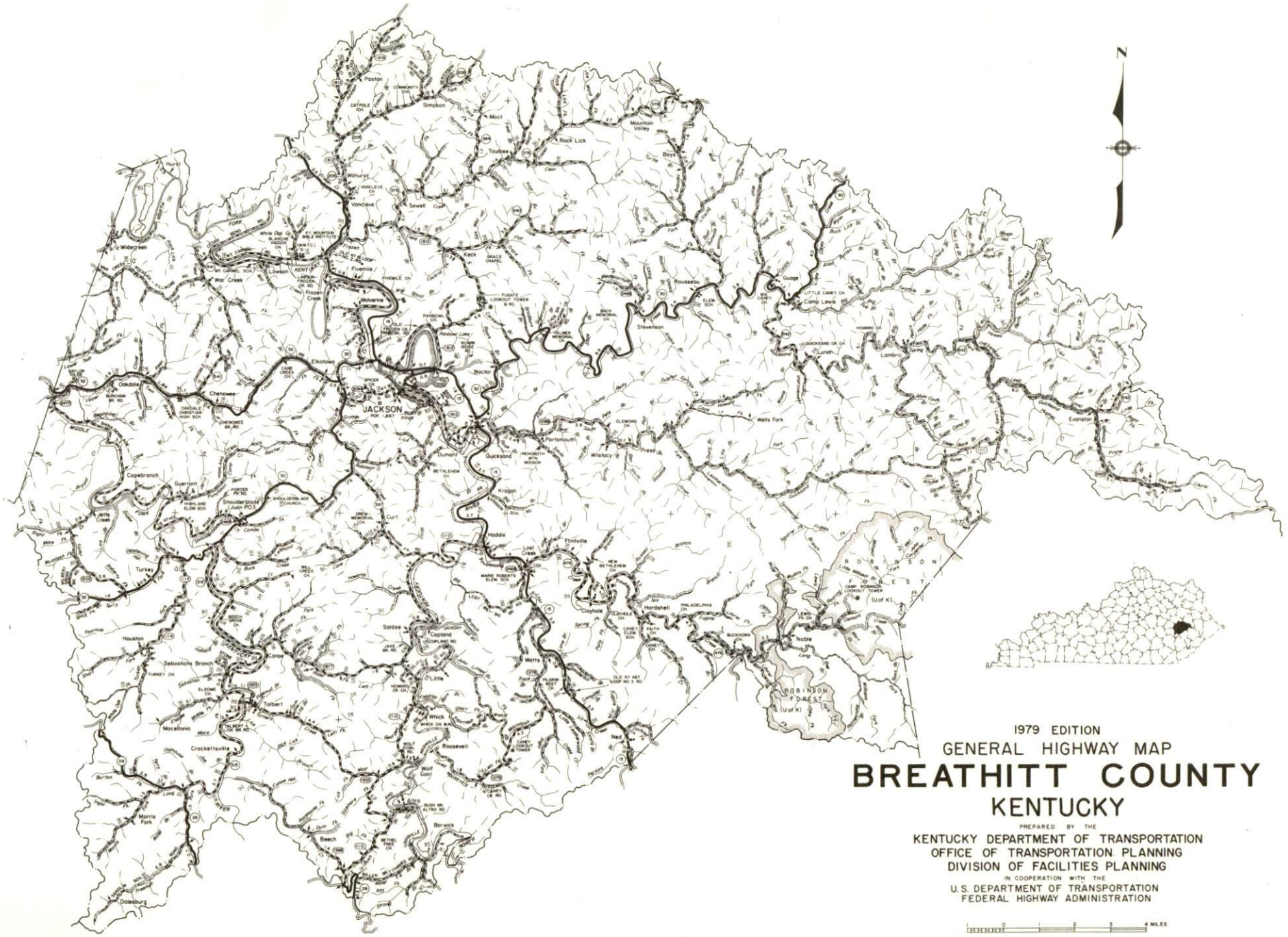
1979

Program manager: Patsy Wallace; production supervisor: Pam Riley;
research: John McMurray; clerical: Linda Fint; graphics: Frank
Ferrante, Tony Cecconi and Richard Spencer; cartography: Industrial
Development Division. Cost of printing paid from state funds.

TABLE OF CONTENTS

<u>Chapter</u>	<u>Page</u>
INDUSTRIAL SITES	i
SUMMARY OF INDUSTRIAL RESOURCES - JACKSON, KENTUCKY	1
THE LABOR MARKET AREA	6
Population	6
Labor Force Characteristics of Residents, 1978	6
Jackson Manufacturing Firms, Their Products and Employment . .	7
Labor Organizations	7
Industrial Services	7
Estimated Male Labor Supply	8
Estimated Female Labor Supply	8
Average Weekly Wages by Industry, by Place of Work, 1977	9
Per Capita Personal Income	11
TRANSPORTATION	12
Rail	12
Highways	12
Truck Service	12
Air	13
Bus	14
Taxi	14
Rental Services	14
Water	14
POWER AND FUEL	15
Electricity	15
Natural Gas	15
Other Fuels	16
WATER AND SEWERAGE	17
Water	17
Sewerage	19
CLIMATE	20

<u>Chapter</u>	<u>Page</u>
LOCAL GOVERNMENT	21
City	21
County	21
Assessed Value of Property, 1977	21
Property Taxes	21
Combined State and Local Rates Per \$100 Valuation, 1978	22
Planning and Zoning	22
Safety	22
Police	22
Fire	22
Rescue Service	23
Refuse Collection and Disposal	23
EDUCATION	24
Public Schools	24
Area Colleges and Universities	24
Vocational Schools	25
HEALTH	27
Local Medical Personnel	27
Hospitals	27
Other Medical Facilities	27
Ambulance Service	27
Public Health	27
OTHER LOCAL FACILITIES	28
Communications	28
Library Services	28
Religious Institutions	29
Financial Institutions	29
Hotels and Motels	29
Clubs and Organizations	30
RECREATION	31
COMMUNITY IMPROVEMENTS	32



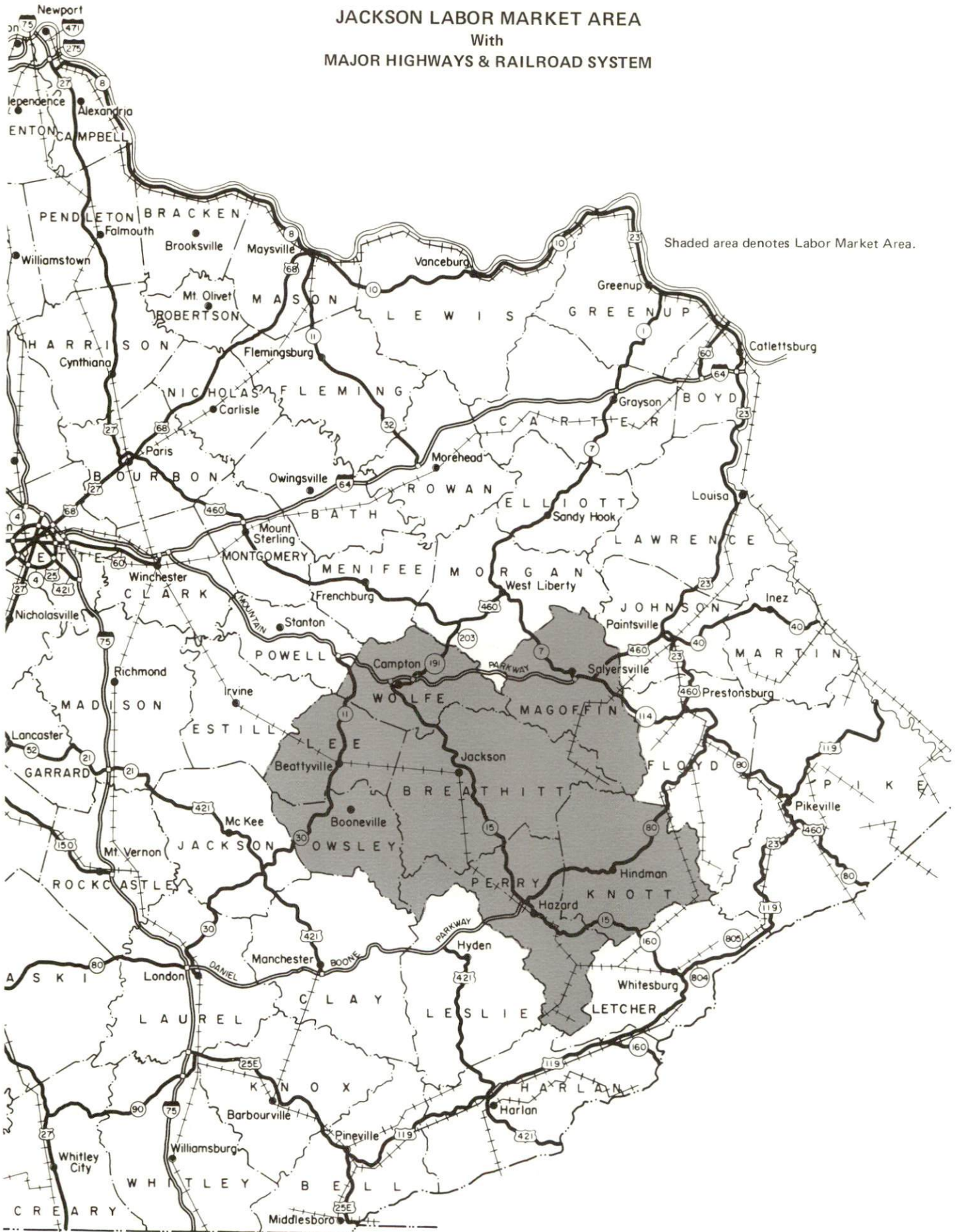
1979 EDITION
GENERAL HIGHWAY MAP
BREATHITT COUNTY
KENTUCKY

PREPARED BY THE
KENTUCKY DEPARTMENT OF TRANSPORTATION
OFFICE OF TRANSPORTATION PLANNING
DIVISION OF FACILITIES PLANNING
IN COOPERATION WITH THE
U.S. DEPARTMENT OF TRANSPORTATION
FEDERAL HIGHWAY ADMINISTRATION



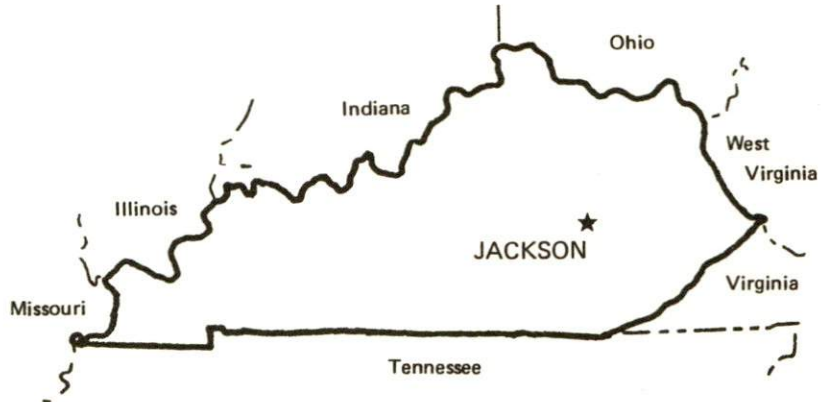
JACKSON LABOR MARKET AREA

With
MAJOR HIGHWAYS & RAILROAD SYSTEM



SUMMARY OF INDUSTRIAL RESOURCES
JACKSON, KENTUCKY

LOCATION



Road Distance in Miles:

Atlanta	<u>378</u>	Baltimore	<u>597</u>
Chicago	<u>438</u>	Detroit	<u>423</u>
New York	<u>769</u>	St. Louis	<u>421</u>

POPULATION

City of Jackson, 1976	<u>2,167</u>
Breathitt County, 1977	<u>17,200</u>
Labor Market Area, 1977	<u>96,400</u>
% Nonwhite, Breathitt County, 1977	<u>0.1</u>

LABOR ANALYSIS

Labor Market Area - Breathitt, Knott, Lee, Magoffin, Owsley, Perry and Wolfe Counties

Estimated available workers from labor market area, 1977:

Male	<u>6,559</u>	Female	<u>7,320</u>
Unemployment rate, 1978		Labor Market Area	<u>7.5%</u>
Breathitt County	<u>6.4%</u>	Owsley County	<u>8.5%</u>
Knott County	<u>7.7%</u>	Perry County	<u>6.9%</u>
Lee County	<u>10.1%</u>	Wolfe County	<u>7.3%</u>
Magoffin County	<u>8.8%</u>		

Total employment, Breathitt County, 1978 - 6,030

Manufacturing employment in labor market area, 1977 - 32,360

Major local manufacturing plant:

<u>Name</u>	<u>Employment</u>
<u>Prestolite Wire Division of Eltra Corporation</u>	<u>114</u>

Labor unions in local manufacturing plants:

None

TRANSPORTATION

Highways:

Parkways - Mountain Parkway, 21 miles northwest; Daniel Boone Parkway, 28 miles south
Kentucky Highways - 15, 30 and 52

Rail:

Railroad - Louisville & Nashville Railroad Company
Distance to nearest piggyback - 86 miles

Truck:

Number of interstate motor carriers - 2; Local terminals - 0

Water:

Nearest navigable river - Kentucky River, 29 miles at Beattyville

Air:

Nearest scheduled airline service - Blue Grass Field, Lexington
Distance - 86 miles; Airlines serving - Delta, Eastern, Piedmont, and Allegheny

Nearest local airport - Hazard Airport, Hazard
Distance - 31 miles; Runway length - 2,300 feet

UTILITIES AND SERVICES

Electricity:

Local distributor - Kentucky Power Company
Source of power - Kentucky Power Company

Natural Gas:

Local distributor - Panbowl Gas Company
Source of supply - Panbowl Production (Local gas field)
Available for new industry - Negotiable

Other Fuels:

Number of area propane distributors - 3
Number of area distillate fuel oil distributors - 5

Water, treated:

Local supplier - Municipal
Excess municipal system capacity - None
Expansions planned - Yes

Water, raw:

Source - North Fork Kentucky River

Sewer:

Excess treatment capacity - None
Planned expansions - Yes

Industrial Services:

	<u>Location</u>	<u>Miles Distant</u>
Tool & Die, Machine & Pattern Shops	<u>Paintsville</u>	<u>57</u>
Metal Service Centers	<u>Lexington</u>	<u>86</u>
Heat Treating	<u>Richmond</u>	<u>77</u>
Metal Finishers	<u>Richmond</u>	<u>77</u>
	<u>Lexington</u>	<u>86</u>
Electric Motor Repair	<u>Whitesburg</u>	<u>65</u>

CLIMATE

Temperature, Normal - 55.2 degrees F.
Precipitation, Normal - 44.49 inches
Snowfall, Mean Annual - 16.7 inches
Prevailing winds - South
Relative humidity (%) - 7 a.m. 81; 7 p.m. 64

GOVERNMENT

Type - Mayor-City Council
Police personnel - full-time - 7
Fire department personnel - full-time - 2; volunteer - 20
Fire insurance rating (A.I.A.), class - Inside city - 8
Outside city - 10

TAXES

Property taxes:

Combined state and local rates per \$100 valuation, 1978
(100% assessment)

	<u>Inside City of Jackson</u>	<u>Outside City</u>
1. Land and buildings	\$1.280	\$1.203
2. Mfg. machinery, raw materials, goods in process, pollution control equipment	0.150	0.150
3. Finished goods, office equipment, vehicles, other tangibles	1.415	1.338
4. Intangibles (accounts receivable, notes, bonds, etc.)	0.250	0.250
5. Leaseholds in I. R. bond financed plants	0.015	0.015

EDUCATION

State vocational-technical school - Hazard State Vocational-Technical School, Hazard

Area vocational education center - Breathitt County Area Vocational Education Center, Jackson

College or university - Lees Junior College, Jackson

Public Schools:

High school enrollment - 1,046; Student/teacher ratio - 19-1

Middle school enrollment - 410; Student/teacher ratio - 27-1

Elementary school enrollment - 2,414; Student/teacher ratio - 20-1

FINANCIAL INSTITUTIONS

Banks - 2; Total assets - \$56,986,038.67

COMMUNICATIONS

Local newspaper - The Jackson Times - Weekly

Local radio stations - WEKG-AM; WMTC-AM; WJSN-FM

Television reception - Cable service

MEDICAL

Number of physicians locally - 6; Number of dentists locally - 6

Hospital - Hazard Appalachian Regional Hospital, Hazard, 31 miles distant; Number of beds - 148

RELIGIOUS FACILITIES

Churches - 10; Nearest synagogues - Lexington, 86 miles distant

PUBLIC LODGING

Total number hotels and motels - 3; Total rooms - 90

RECREATION FACILITIES

Parks - 2; Tennis courts - 2; Swimming pools - 1; Playgrounds - 4;
Baseball diamonds - 1

Nearest state parks -

Natural Bridge State Resort Park, 34 miles northwest
Camping; Swimming; Fishing; Boating; Lodgings; Dining facility;
Open year round

Buckhorn Lake State Resort Park, 38 miles south
Camping; Swimming; Fishing; Water skiing; Boating; Lodgings;
Dining facility

THE LABOR MARKET AREA

Area	POPULATION		Percent Nonwhite
	1977*	1970	1977
Jackson	2,167**	1,887	0.5**
Labor Market Area	96,400	82,900	N/A
Breathitt County	17,200	14,221	0.1
Knott County	17,700	14,698	0.9
Lee County	7,300	6,587	0.7
Magoffin County	12,500	10,443	0.1
Owsley County	5,600	5,023	0.3
Perry County	29,700	26,259	2.9
Wolfe County	6,400	5,669	0.2

*Provisional Estimates.

**1976 Population Estimates; 1970 Percent Nonwhite.

Sources: U. S. Department of Commerce, Bureau of the Census, Census of Population, 1970. U. S. Department of Commerce, Bureau of the Census, Current Population Reports, Series P-25, No. 756, January 1979; Series P-26, No. 77-17, November 1978. University of Louisville, Urban Studies Center, Population Research Unit, Kentucky's Population Disaggregations of 1977 Estimates, December 1978.

LABOR FORCE CHARACTERISTICS OF RESIDENTS, 1978

	Breathitt County	Labor Market Area
Civilian Labor Force	6,438	33,714
Employment	6,026	31,189
Agricultural	167	891
Nonagricultural	5,859	30,298
Unemployment	412	2,525
Rate of Unemployment (%)	6.4	7.5

Source: Kentucky Department for Human Resources, Kentucky Labor Force Estimates, Annual Averages, 1978.

JACKSON MANUFACTURING FIRMS,
THEIR PRODUCTS AND EMPLOYMENT

Firm (Establishment date)	Product	Employment		
		Total	Male	Female
Breathitt County Ready Mix Concrete (1965)	Ready mixed concrete	8	8	0
Luther Compton Sawmill (N/A)	Lumber	23	22	1
Hinkle Contracting Company (1974)	Ready mix concrete, asphalt	16	16	0
Inter-Mountain Publishing Company (1965)	Newspaper, job printing	13	3	10
Prestolite Wire Division, Eltra Corporation (1975)	Battery cables	140	37	103
Royal Crown Bottling Company (1949)	Soft drinks	23	22	1

Source: Kentucky Department of Commerce, Division of Research and Planning.

LABOR ORGANIZATIONS

Presently, no labor unions represent manufacturing workers in Jackson.

INDUSTRIAL SERVICES

	Location	Miles Distant
Tool & Die, Machine & Pattern Shops	Paintsville	57
Metal Service Centers	Lexington	86
Heat Treating	Richmond	77
Metal Finishers	Richmond	77
	Lexington	86
Electric Motor Repair	Whitesburg	65

Source: Kentucky Directory of Selected Industrial Services, 1977.

ESTIMATED MALE LABOR SUPPLY
JACKSON LABOR MARKET AREA

Area	Current			Future	
	Total	Not in Labor Force	Unemployed	Under- employed	Reaching 18 years of age before 1985
Labor Market					
Area	6,559	3,450	1,719	1,390	4,558
Breathitt	841	260	271	310	801
Knott	2,270	1,810	230	230	883
Lee	1,066	760	136	170	307
Magoffin	461	0	331	130	631
Owsley	261	40	101	120	280
Perry	1,028	160	538	330	1,383
Wolfe	632	420	112	100	273

Sources: Kentucky Department for Human Resources, Kentucky Labor Supply Estimates by County, 1977. Kentucky Department of Commerce, Future Labor Supply Before 1985.

ESTIMATED FEMALE LABOR SUPPLY
JACKSON LABOR MARKET AREA

Area	Current			Future	
	Total	Not in Labor Force	Unemployed	Under- employed	Reaching 18 years of age before 1985
Labor Market					
Area	7,320	5,880	470	970	4,335
Breathitt	1,044	790	74	180	771
Knott	1,802	1,590	62	150	754
Lee	827	680	37	110	315
Magoffin	804	600	94	110	596
Owsley	657	590	27	40	258
Perry	1,646	1,190	146	310	1,402
Wolfe	540	440	30	70	239

Sources: Kentucky Department for Human Resources, Kentucky Labor Supply Estimates by County, 1977. Kentucky Department of Commerce, Future Labor Supply Before 1985.

AVERAGE WEEKLY WAGES BY INDUSTRY,
BY PLACE OF WORK, 1977

	<u>Breathitt County</u>	<u>Knott County</u>	<u>Lee County</u>	<u>Magoffin County</u>
All Industries	\$186.71	\$214.47	\$164.57	\$235.19
Mining & Quarrying	334.36	288.51	214.35	365.94
Contract Construction	122.08	152.70	102.27	106.69
Manufacturing	135.42	*	150.26	*
Transportation, Communications & Public Utilities	184.37	210.11	173.63	228.14
Wholesale & Retail Trade	124.78	105.57	150.77	114.24
Finance, Insurance & Real Estate	226.35	*	*	192.29
Services	129.29	156.95	115.43	125.38
Other	91.94	0	*	0

	<u>Owsley County</u>	<u>Perry County</u>	<u>Wolfe County</u>
All Industries	\$175.72	\$270.92	\$154.07
Mining & Quarrying	267.05	378.42	273.02
Contract Construction	116.13	236.13	48.64
Manufacturing	0	204.98	151.75
Transportation, Communications & Public Utilities	*	239.39	145.17
Wholesale & Retail Trade	97.81	148.70	110.70
Finance, Insurance & Real Estate	*	236.13	*
Services	154.95	176.51	95.63
Other	0	138.12	0

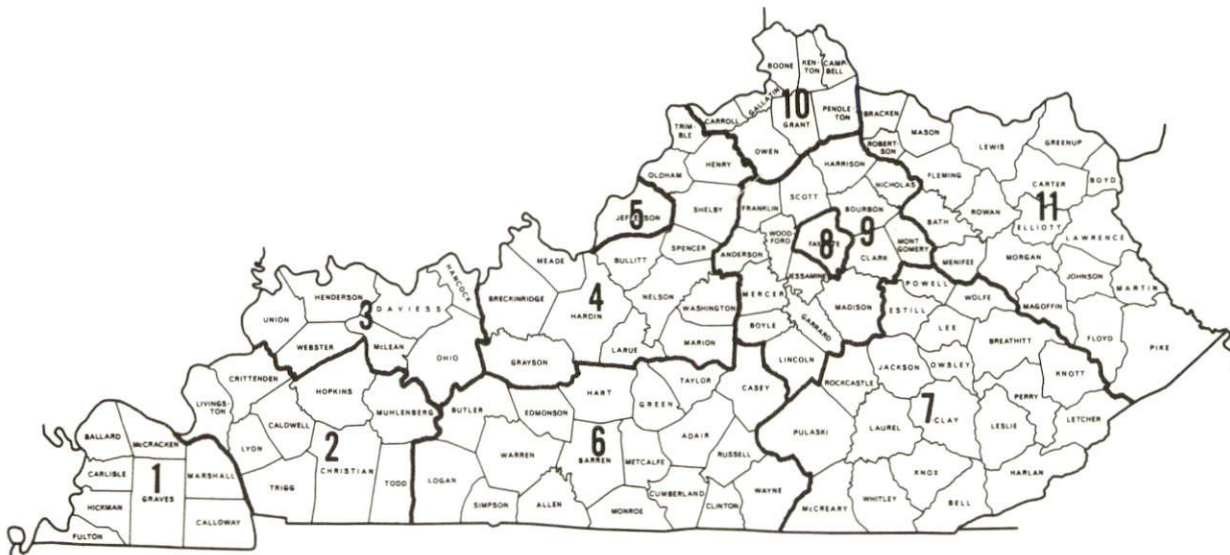
*Not disclosed.

Note: Excludes domestic workers, railway workers; certain nonprofit corporations; majority of federal, state, and local government workers; and self-employed workers.

Source: Kentucky Department for Human Resources, Average Weekly Wages of Workers Covered by Kentucky Unemployment Insurance Law, 1977.

Occupational wage rates for specific industries are usually not available to most government agencies, and wage data furnished to state employment agencies by individual industrial employers is protected from disclosure by federal law. The most reliable up-to-date wage information can be obtained by direct contact with local employers.

Associated Industries of Kentucky, a voluntary organization of Kentucky businesses, regularly collects occupational wage rates and fringe benefits data from participating member firms. Data is compiled for over 127 clearly defined office, production, and service occupations. Tabulations are published for eleven regions of Kentucky, as shown on the map below. It should be noted that the data may be weighted by the preponderance of firms in the larger cities and may be somewhat higher than the rates paid in the smaller communities. Data from these tabulations are available, upon request, from the Kentucky Department of Commerce, Frankfort, Kentucky 40601.



Associated Industries of Kentucky Area Wage Surveys

PER CAPITA PERSONAL INCOME

<u>Area</u>	<u>1977</u>	<u>1973</u>	<u>Percent Change</u>
Breathitt County	\$3,345	\$2,117	58.0
Labor Market Area Range	\$2,747 - 5,611	\$1,811 - 3,324	N/A
Kentucky	5,989	4,021	48.9
U. S.	7,026	4,980	41.1

Source: U. S. Department of Commerce, Bureau of Economic Analysis,
April 1979.

TRANSPORTATION

Rail

Line serving Jackson - Louisville & Nashville Railroad

Services - 1 northbound and 1 southbound daily freight stop to set-off or pick-up cars as necessary; 5 northbound and 5 southbound through freights daily; switching facilities; team track with space for 10 cars; siding space for 100 cars; piggyback facilities available at Lexington, a distance of 86 miles

For details on routing, schedules, rates, and services, contact:

Manager of Industrial Development
Louisville & Nashville Railroad
Company
908 West Broadway
Louisville, Kentucky 40201
(502) 587-5723

Highways

Kentucky Highways 15, 30 and 52 serve Jackson. Access to the Mountain Parkway is 21 miles northwest of Jackson at Campton via Kentucky Highway 15. An interchange of the Daniel Boone Parkway is located 28 miles south of Jackson via Kentucky Highway 15.

Truck Service

Company

Hazard Express, Inc.*

Overnite Transportation
Company*

Other Freight Services

Purolator Courier Corporation**
United Parcel Service**

Home Office

P. O. Box 746
Hazard, Kentucky 41701

P. O. Box 1216
Richmond, Virginia 23209

Nearest Shipping Center

Lexington, 86 miles northwest
Clay City, 47 miles northwest;
Cornettsville, 46 miles southeast

*Interstate and Intrastate.

**For regular scheduled pickups or for occasional pickups, arrangements must be made with the Louisville office of Purolator Courier Corporation or United Parcel Service.

HIGHWAY MILES AND TRUCK TRANSIT TIME IN DAYS FROM
JACKSON, KENTUCKY, TO SELECTED MARKET CENTERS

City	Highway Miles	Delivery		City	Highway Miles	Delivery	
		Time*	TL			Time*	TL
Atlanta, Ga.	378	1		Los Angeles, Ca.	2,266	7-8	
Baltimore, Md.	597	2		Louisville, Ky.	159	1	
Birmingham, Ala.	439	1-2		Nashville, Tenn.	283	1	
Chicago, Ill.	438	2		New Orleans, La.	781	3	
Cincinnati, Ohio	164	1		New York, N. Y.	769	3	
Cleveland, Ohio	403	2		Pittsburgh, Pa.	429	1-2	
Detroit, Mich.	423	3		St. Louis, Mo.	421	1	
Knoxville, Tenn.	185	1					

*Delivery time does not include day of pickup.

Source: Delivery Time Only - Overnite Transportation Company,
P. O. Box 1216, Richmond, Virginia 23209.

Air

The Jackson-Breathitt County Airport is scheduled to open in 1980. The airport will have a 4,400-foot runway and a local weather station.

Nearest Small Craft

Location:	Hazard Airport
Runways:	Hazard, 31 miles southeast of Jackson
Length:	1 paved
Traffic	2,300 feet
Control:	Wind Sock
Lighting:	None
Services:	100 octane, jet fuel, 6 days - day light hours, minor A & E repairs

(Contd.)

Nearest Scheduled Airline Service

Location: Blue Grass Field
Lexington, 86 miles distant
Runways: 2 paved
Length: 6,500 and 3,500 feet
Traffic Control: Tower; radar services - arrival and departure, Stage II contact approach control, ground control; Automatic Terminal Information Service
Lighting: Approach lighting system, beacon, runways and obstructions lighted
Services: Delta, Eastern, Piedmont and Allegheny Airlines; fuel - 24 hour service, 80, 100, and jet fuel; repair service - Major A & E repairs, Certified Avionics repair station; National Weather Service; flight instructions; charter service; storage; taxi, limousine and car rentals
Air Freight Service: Air freight terminal regularly serviced by freight carrying airlines

Bus - Southern Greyhound Bus Lines

Taxi - One company providing 24-hour service

Rental Services - Nearest truck and trailer rentals are at Hazard, 31 miles distant.

Water

The nearest navigable river is the Kentucky River at Beattyville, 29 miles west of Jackson, where a 6-foot navigation channel begins.

POWER AND FUEL

Electricity

Company serving Jackson and parts of Breathitt County - Kentucky
Power Company
Source of power - Kentucky Power Company
Total generating capacity - 1,002,600 KW
For industrial rates contact:

Kentucky Power Company
High Street
Hazard, Kentucky 41701
(606) 436-2141

Company serving part of Breathitt County - Licking Valley Rural
Electric Cooperative Corporation
Source of power - East Kentucky Power Cooperative
Total generating capacity - 867,000 KW
For industrial rates contact:

Industrial Development Division
East Kentucky Power Cooperative
P. O. Box 707
Winchester, Kentucky 40391
(606) 744-4812

and/or

Licking Valley RECC
Main Street
West Liberty, Kentucky 41472
(606) 743-3179

Natural Gas

Company serving Jackson - Panbowl Gas Company
Source of supply - Panbowl Production (local gas field)
Size of transmission mains - Two 2-inch (supplier)
Two 3-inch (distributor)
Distribution mains - 4, 3 and 2 inches
Distribution pressure - 7 ounces
Btu content - 1,170 per cubic foot
For rates and supplies contact:

Panbowl Gas Company
P. O. Box 619
Jackson, Kentucky 41339
(606) 666-2205

Other Fuels

Propane (Within 30 miles)

Darch Bottled Gas, Inc.
Main Street
Beattyville, Kentucky 41311

Ideal Bottled Gas, Inc.
Main Street
Beattyville, Kentucky 41311

Empire Gas, Inc., of Jackson
329 Broadway
Jackson, Kentucky 41339

Fuel oils

Distillate fuel oil - (Within 30 miles)

Ashland Petroleum Company
Quicksand Road
Jackson, Kentucky 41339

Ideal Gas & Oil Company
Armory Drive
Jackson, Kentucky 41339

Breathitt County Oil Company
Highway 15
Jackson, Kentucky 41339

Rogers Oil Company
Highway 11
Beattyville, Kentucky 41311

Standard Oil Company
Armory Drive
Jackson, Kentucky 41339

Residual fuel oil - Arrangements must be made with the refinery.

Low sulphur content coal - Available locally.

WATER AND SEWERAGE

Water

Company serving Jackson - Jackson Municipal Waterworks*
333 Broadway
Jackson, Kentucky 41339
(606) 666-2056/5272

Source - North Fork Kentucky River
Treatment plant capacity - 720,000 gallons per day
Average daily consumption - Plant capacity
Type treatment - Alum, lime, nu-char, fluoride, chlorine
Storage capacity - 600,000 gallons
Size lines - 10, 8 and 6 inches
Average pressure - 75 to 90 psi
Average temperature - 55 degrees F.

MONTHLY WATER RATES FOR WHOLESALE AND INDUSTRIAL CONSUMERS

First	2,000 gallons	\$5.00 (Minimum)
Next	3,000 gallons	1.50 per M gallons
Next	5,000 gallons	1.40 per M gallons
Next	5,000 gallons	1.30 per M gallons
Next	5,000 gallons	1.20 per M gallons
Next	10,000 gallons	1.10 per M gallons
Next	20,000 gallons	1.00 per M gallons
Over	50,000 gallons	.90 per M gallons

Tap-on charge:	Residential	\$ 100
	Commercial:	as follows
	3/4-inch meter	200
	Over 3/4-inch meter	
	up to 2-inch meter	500
	2-inch meter & over	1,000

*Plans are under way for a \$2 million improvement project which includes construction of a 1.5 million gpd water treatment plant, construction of a 400,000-gallon water storage tank, and extension of water mains to Kentucky Highways 30 and 52.

Name of water district - Quicksand Water and Sewer District*
Star Route #5
Quicksand, Kentucky 41363
(606) 666-2877

Area served - Southeastern Breathitt County
Date when water district began operating - 1964
Source of supply of treated water - Jackson Municipal Waterworks
Average amount of water used in a 24-hour period - N/A
Peak amount of water used in a 24-hour period - N/A
Storage capacity - 150,000 gallons
Average pressure - 60 psi
Average temperature - 68 degrees F.
Size lines - 4, 6 and 8 inches
Rates -

First	2,000 gallons	\$5.50 (Minimum)
Next	4,000 gallons	1.25 per M gallons
Next	6,000 gallons	1.00 per M gallons
Next	8,000 gallons	.90 per M gallons
Over	20,000 gallons	.80 per M gallons

Tap-on charge:

Residential	\$ 100
Commercial:	
3/4-inch meter	200
Over 3/4-inch meter up to 2-inch meter	500
2-inch meter and over	1,000

Surface water sources - North and Middle Forks of Kentucky River
Average discharge - North Fork Kentucky River at Jackson, 1,336 cfs
(39 years, USGS); Middle Fork Kentucky River at Tallega, 722 cfs
(36 years, USGS)
Expected ground water yield - 5 to 50 gpm over entire county except
for eastern tips which are 50 to 200 gpm

*Operation and management of the Quicksand Water and Sewer District has
been assumed by the Jackson Municipal Waterworks.

Sewerage

Company serving Jackson - Jackson Municipal Sewerage System*
333 Broadway
Jackson, Kentucky 41339
(606) 666-2056/5197

Design capacity - 300,000 gallons per day**

Average daily flow - At capacity

Treatment - Secondary

Type treatment - Aeration, digester, drying beds

Treated effluent discharged into - North Fork Kentucky River

Size of sanitary mains - 12, 10 and 8 inches

Rates - 60 percent of monthly water bill

Tap-on charge:

Residential	\$ 100
Commercial: as follows	
3/4-inch meter	200
Over 3/4-inch meter up to 2-inch meter	500
2-inch meter and over	1,000

*Step I of a 201 Facilities Plan has been completed.

**Kentucky Department for Natural Resources and Environmental Protection.

CLIMATE

Breathitt County

Temperature

Normal (30-year record)	55.2 degrees
Average annual 1978	53.0 degrees
Record highest, September, 1954 (34-year record)	103.0 degrees
Record lowest, January, 1963 (34-year record)	-21.0 degrees
Normal heating degree days (30-year record) (Heating degree day totals are the sums of negative departures of average daily temperatures from 65 degrees F.)	4,729

Precipitation

Normal (30-year record)	44.49 inches
Mean annual snowfall (34-year record)	16.70 inches
Total precipitation 1978	57.73 inches
Mean number days precipitation (.01 inch or more) (34-year record)	131
Mean number days thunderstorms (34-year record)	47

Prevailing Winds (17-year record)

South

Relative Humidity

1 a.m.	77 percent (14-year record)
7 a.m.	81 percent (15-year record)
1 p.m.	60 percent (15-year record)
7 p.m.	64 percent (15-year record)

Source: U. S. Department of Commerce, Environmental Science
Services Administration, Climatological Data, 1978.
Station of record: Lexington, Kentucky.

LOCAL GOVERNMENT

City

Structure - Mayor - 4-year term; 6 councilmen - 2-year terms
 Budget 1978-1979 - General Fund \$197,000
 Water and Sewer Fund 250,000 (Est.)
 Fees and licenses - Occupational licenses range from \$10 to \$350
 annually; auto sticker - \$10 annually

County

Structure - County Judge/Executive - 4-year term;
 4 magistrates - 4-year terms
 Budget 1978-1979 - General Fund \$216,550; Road Fund \$52,750

Assessed Value of Property, 1977

<u>Classes of Property</u>	<u>Jackson</u>	<u>Breathitt County</u>
Real Estate	\$6,540,851	\$40,700,480 (1978-79)
Tangibles	7,644,208	60,862,931 (1978-79)

Property Taxes

All property in Kentucky is assessed at 100 percent of fair cash value.

Land and buildings are taxed by the state and may be taxed by local jurisdictions. The state rate is \$0.315 per \$100 of assessed valuation.

Manufacturing machinery, raw materials inventories, pollution control equipment, and goods in the process of manufacture are not subject to local taxation. The state rate is \$0.15 per \$100.

Other tangible personal property owned by manufacturers (automobiles, trucks, finished goods, office furniture, office equipment) is taxed by the state at \$0.45 per \$100 and may be taxed by local jurisdictions.

Property stored in public warehouses in a transit status is not subject to local taxation. The state rate is only \$0.015 per \$100.

Intangible personal property located in Kentucky (money in hand, shares of stock, notes, bonds, accounts receivable, and other credits) is taxed by the state at \$0.25 per \$100, and is not subject to local taxation.

Private leaseholds in industrial facilities owned by cities or counties and financed by industrial revenue bonds are subject to a state tax of \$0.015 per \$100 of value (essentially the lessee's equity, adjusted for appreciation or depreciation). Local taxation is not permitted.

Combined State and Local Rates Per \$100 Valuation, 1978*
(100% assessment)

	<u>Inside City of Jackson</u>	<u>Outside City</u>
1. Land and buildings	\$1.280	\$1.203
2. Mfg. machinery, raw materials, goods in process, pollution control equipment	0.150	0.150
3. Finished goods, office equipment, vehicles, other tangibles	1.415	1.338
4. Intangibles (accounts receivable, notes, bonds, etc.)	0.250	0.250
5. Leaseholds in I. R. bond financed plants	0.015	0.015

Planning and Zoning

Joint agency - Jackson-Breathitt County Planning Commission
 Zoning enforced - City only
 Subdivision regulations enforced - City only
 Local codes enforced - Housing and building
 Mandatory state codes enforced - Plumbing, National Fire Protection Association Code, National Building Code (for major buildings and residential construction containing more than 12 bedrooms per building)

Safety

<u>Police</u>	<u>Jackson</u>	<u>Breathitt County</u>
Total staff	7	6 Active 14 Volunteers
Radio-patrol cars	2	3
 <u>Fire</u>		
American Insurance Association Fire Rating	8	10
Full-time staff	2	
Volunteers	20	

*Kentucky Department of Commerce.

Rescue Service

Breathitt County Rescue Squad:

Number of volunteers - 15

Equipment - One truck with basic equipment on board, boats available from volunteers

Personnel training - Basic first aid and cardiopulmonary resuscitation

Refuse Collection and Disposal

Jackson

Type service

Municipal

Fee charged:

residential

\$3.00

business

By volume - \$6.00 minimum

industrial

By volume

Collection frequency:

residential

Twice weekly

business

Daily

industrial

Twice weekly

Trash pickup

Daily

Disposal method

Landfill

EDUCATION

Public Schools

	<u>Jackson Independent</u>	<u>Breathitt County</u>
Total Enrollment (Spring 1979)	379	3,491
Elementary	217	2,197
Middle School		410
High School	162	884
Student-Teacher Ratio	16-1	21-1
Elementary	18-1	21-1
Middle School		27-1
High School	14-1	21-1
Percent High School Graduates to College	55.6	27.7
Expenditures Per Pupil (1977-78)	\$880.42	\$841.50
Bonded Indebtedness, June 30, 1978	\$250,000	\$4,988,000*

Area Colleges and Universities

<u>Name</u>	<u>Location (Miles distant)</u>	<u>Enrollment (Fall, 1978)</u>	<u>Highest Degree Conferred</u>
Lees Junior College Hazard Community	Jackson	304	Associate
College	Hazard (31)	281	Associate
Alice Lloyd College Prestonsburg	Pippa Passes (60)	174	Associate
Community College	Prestonsburg (62)	580	Associate
Southeastern Christian College	Winchester (65)	124	Associate

*Includes refunding issue - \$2,245,000.

Vocational Schools

Nearest State School

Location	Hazard State Vocational-Technical School
Miles Distant	Hazard
Curriculum	31
	Business and Office
	Clerical
	Secretarial
	Consumer and Home Economics
	Commercial Foods
	Consumer and Family Life Skills
	Health and Personal Services Occupations
	Cosmetology
	Practical Nursing
	Industrial Education
	Air Conditioning and Heating
	Auto Body Repair
	Auto Mechanics
	Carpentry-Building Trades
	Diesel Mechanics
	Drafting
	Electronics (Communications)
	Electronics Technician
	Heavy Equipment
	Maintenance and Repair
	Operating Engineer
	Highway Technology
	Industrial Electricity
	Machine Shop
	Masonry
	Mine Machinery Repair
	Welding
	Public Service Programs
	Fire Service Training
	Learning Resource Center

(Contd.)

Nearest Area Education Center

Location
Curriculum

Breathitt County Area Vocational
Education Center
Jackson
Business and Office
Clerical
Secretarial
Industrial Education
Appliance Repair
Auto Body Repair
Carpentry-Building Trades
Diesel Mechanics
Industrial Electricity
Machine Shop
Mining Careers

Arrangements can be made to provide training in the specific production skills required by an industrial plant. Instruction may be conducted either in the vocational school or in the industrial plant, depending upon the desired arrangement and the availability of special equipment.

HEALTH

Local Medical Personnel

Physicians - 6
Dentists - 6

Hospitals

<u>General Hospital</u>	<u>Location</u>	<u>Beds</u>
Hazard Appalachian Regional Hospital	Hazard	148

General hospital facilities and services - X-ray, emergency room, pathology and clinical laboratory, home health service, pharmacy, blood bank, intensive care unit, nursery, 2 major operating rooms, 1 minor operating room, obstetrics, physical therapy, respiratory therapy, family health services, women's clinic, pediatric clinic, W.I.C., rehabilitation counseling, social services, volunteer services, education services, chaplain program, infant care program

Medical staff - 14 physicians, 2 general surgeons, 40 registered nurses, 84 licensed practical nurses, 1 radiologist, 1 pathologist, 3 pharmacists, 2 internists, 3 pediatricians, 2 OB-GYN specialists

Other Medical Facilities

24-hour medical service is provided by the Mountain Comprehensive Care Center.

Ambulance Service

Name - Breathitt County Ambulance Service
Staff - Four - trained in CPR and basic first aid
Service - 24-hour
Equipment - 2 ambulances, fully equipped

Public Health

Facility - Breathitt County Health Department
Staff - Administrator, 5 registered nurses, 5 clerks, 1 public health nurse, 5 community health workers, 1 health environmentalist

OTHER LOCAL FACILITIES

Communications

Telephone - South Central Bell Telephone Company
Services - Standard

Telegraph - Western Union Telegraph Company
Services - For telegram, mailgram and international messages a
toll-free number is provided.

Postal - U. S. Post Office
Class - First
Mail received - Once daily
Mail dispatched - Once daily

Newspapers - The Jackson Times
Weekly and circulation - 4,600
Other papers
received from - Louisville and Lexington, Kentucky

Radio - WEKG-AM, WMTC-AM, WJSN-FM
Stations received from - Hazard and Lexington, Kentucky; Indianapolis,
Indiana; Cincinnati, Ohio; Nashville,
Tennessee

Television -
Cable service
Reception from - Hazard and Lexington, Kentucky; Johnson City and
Bristol, Tennessee

Kentucky Educational
Television - Channel 35, Hazard transmitter

Library Services

Public library - Breathitt County Public Library
Size collection - 22,000 volumes
Circulation, 1977-1978 - 86,300
Services - Records and record player, magazines, pictures, story
hour, film strip machine, community room, color TV, bookmobile,
services to shut-ins, microfilm reader-printer, movie projector,
duplicator, overhead projector, radio story hour, interlibrary
loans

College library - Lees Junior College

Size collection - 26,000 volumes

Special collections - Publications on Kentucky and Appalachia

Services - Periodicals, film strips, records, games, back issues
on microform, interlibrary loan, 16 mm film, oral history project
on cassette tapes, art exhibits by Kentucky Travel Arts and local
artists, slides. The library is open to the public.

Religious Institutions

Number of churches - 10

Denominations - Baptist
Catholic
Christian
Church of God
First Church of God
Free Methodist
Pentecostal
Presbyterian
United Methodist

Nearest Synagogues - Lexington, Kentucky, 86 miles northwest

Congregations - Adath Israel (reform)
Ohavey Zion (traditional)

Financial Institutions

<u>Banks</u>	<u>Assets</u>	<u>Deposits</u>	<u>Statement Date</u>
Citizens Bank of Jackson	\$33,316,132.06	\$28,848,829.00	12/30/78
The First National Bank	23,669,906.61	21,745,279.68	12/31/78

Hotels and Motels

Total number - 3
Total units - 90

Clubs and Organizations

Beta Club
Blue Lodge
Boy Scouts of America
Breathitt County Industrial
Development Foundation, Inc.
Brownies
Circle "K" Club
Cub Scouts of America
Daughters of America
Daughters of American Revolution
Eastern Star
4-H Club
Future Farmers of America
Future Homemakers of America
Future Teachers of America
Girl Scouts of America
Jackson-Breathitt County Airport
Board
Jaycees
Junior Women's Club
Kiwanis International
Lions
Masonic Lodge
Ministerial Association
Royal Arch
Women's Club

RECREATION

Local

The people of Jackson are striving to improve their recreational facilities. Jackson already has two parks, four playgrounds, a swimming pool, a baseball diamond, a movie theater, two lighted tennis courts, a picnic area and a supervised little league program.

Presently an 8-acre park is under construction and facilities will include a softball diamond, a badminton court, a multipurpose court, a tot lot and a shelter area.

Area (Within 45 miles)

The Daniel Boone National Forest is located within an hour's drive of Jackson. This vast timberland stretches through most of Kentucky's Eastern Region, northeast to south, and within its 650,000 acres lies much of Kentucky's beauty. Throughout the forest are picnic areas, hiking trails, and camping, fishing and boating facilities.

Natural Bridge State Resort Park is located 35 miles northwest of Jackson. This beautiful park is open year round and contains 1,899 acres of forests where cliffs and stone arches fill the landscape. An outstanding variety of plants and wildlife are found within the park. The main attraction of the park is Natural Bridge, one of twelve natural arches in the park. A skylift to Natural Bridge operates from mid April through October. Park facilities and activities include lodge and cottage accommodations, camp sites, swimming pool, 54-acre lake, fishing, boating, hiking trails, playgrounds, picnic areas, horseback riding, and square dancing.

Located in the Daniel Boone National Forest near the park is the Red River Gorge. This is a spectacular boulder-strewn area of rugged woodlands, streams, limestone cliffs, overlooks, arches, and rare plant and animal life. There are 59 natural sandstone arches located in the general area and 3 waterfalls located in the gorge.

Buckhorn Lake State Resort Park is located 38 miles south of Jackson on the edge of the Daniel Boone National Forest. The park which is located on the 1200-acre Buckhorn Lake has 836 scenic, wooded acres. Park accommodations include a 36-room lodge with a dining room, gift shop, meeting rooms and a recreation room. The park also offers camping sites, a swimming pool, a beach and bathhouse, picnic shelters, a playground, miniature golf, tennis courts, hiking trails, a boat dock with 40 open and 20 covered slips, and boat rentals.

COMMUNITY IMPROVEMENTS

Completion of the Jackson-Breathitt County Airport is scheduled for 1980. The airport will have a 4,400-foot runway and a local weather station.

Construction and improvements totaling \$2 million are planned for the Jackson Municipal Waterworks in 1979. The major projects are: a new 1.5 million gpd water treatment plant, a 400,000-gallon water tank, and extension of water mains to Kentucky Highways 30 and 52. Resizing of some water lines is also planned.

A \$200,000 renovation of the Jackson High School has been completed.

The Breathitt County School System has construction projects totaling over \$800,000 planned and under way. A new administration building and classroom additions to two schools are being constructed. Future plans are for a bus garage and food storage facilities.

A swimming pool and gym have been completed at the Breathitt County Middle School.

Off-street parking facilities, with 72 spaces, are scheduled for completion in 1979.

Jacksons Senior Citizens will enjoy new facilities with the remodeling of their building, providing room for recreation and social activities.

Kentucky Department of Commerce
Capital Plaza Tower
Frankfort, Kentucky 40601

Office of the Commissioner
(502) 564-4270

Industrial Development Division
(502) 564-7140

Existing Industries Division
(502) 564-4300

Office of Minority Business Enterprise
(502) 564-2064

Agribusiness Division
(502) 564-6784

International Trade and Investment
Promotion Division
(502) 564-2170

Research and Planning Division
(502) 564-4886
Map Sales Office
133 Holmes Street
(502) 564-4715

Kentucky Development Finance Authority (KDFA)
(502) 564-4554

Kentucky Film Commission
(502) 564-2240