

1975

# Industrial Resources: Bullitt County - Shepherdsville, Mt. Washington, and Lebanon Junction

Kentucky Library Research Collections  
Western Kentucky University, [spcol@wku.edu](mailto:spcol@wku.edu)

Follow this and additional works at: [https://digitalcommons.wku.edu/bullitt\\_cty](https://digitalcommons.wku.edu/bullitt_cty)

 Part of the [Business Administration, Management, and Operations Commons](#), [Growth and Development Commons](#), and the [Infrastructure Commons](#)

---

## Recommended Citation

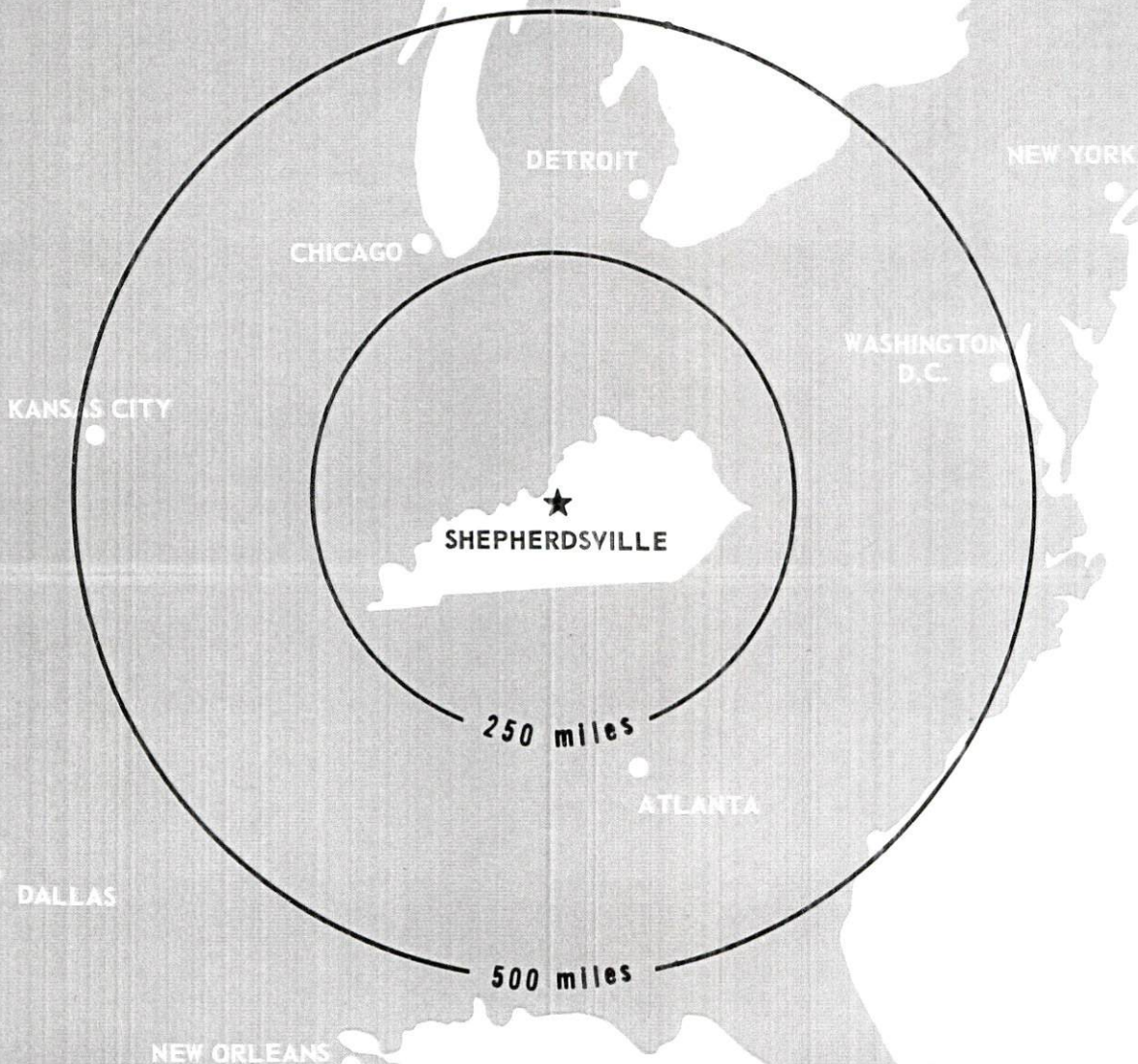
Kentucky Library Research Collections, "Industrial Resources: Bullitt County - Shepherdsville, Mt. Washington, and Lebanon Junction" (1975). *Bullitt County*. Paper 10.  
[https://digitalcommons.wku.edu/bullitt\\_cty/10](https://digitalcommons.wku.edu/bullitt_cty/10)

This Report is brought to you for free and open access by TopSCHOLAR®. It has been accepted for inclusion in Bullitt County by an authorized administrator of TopSCHOLAR®. For more information, please contact [topscholar@wku.edu](mailto:topscholar@wku.edu).

# INDUSTRIAL RESOURCES

dup

## ***SHEPHERDSVILLE, MT. WASHINGTON & LEBANON JUNCTION, KENTUCKY***

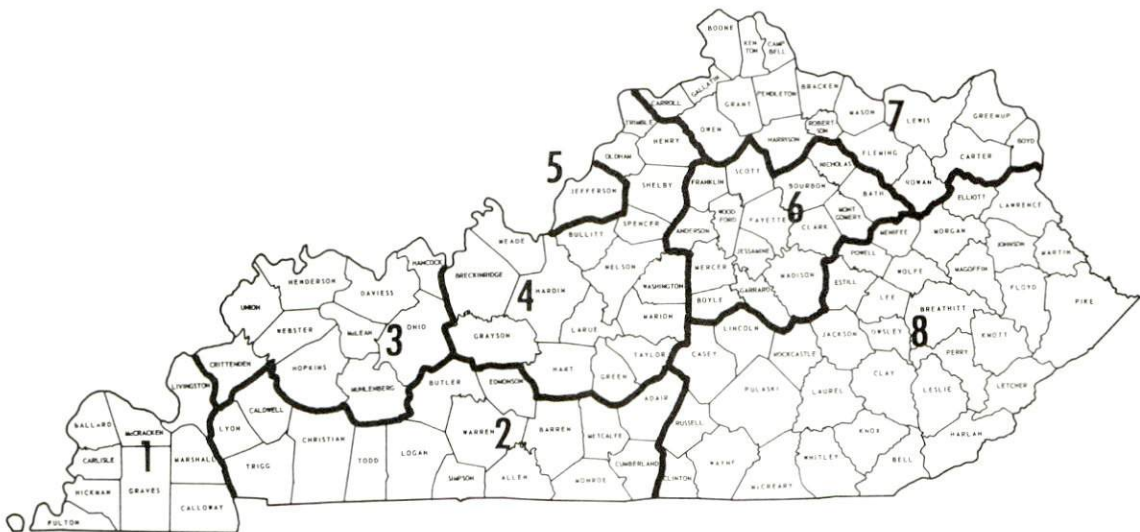


BULLITT COUNTY, KENTUCKY

## WAGES

Occupational wage rates for specific industries are usually not available to most government agencies, and wage data furnished to state employment agencies by industrial employers is protected from disclosure by federal law. The most reliable up-to-date wage information can be obtained by direct contact with local employers.

Associated Industries of Kentucky, a voluntary organization of Kentucky businesses, regularly collects occupational wage rates and fringe benefits data from participating member firms. Data is compiled for over 130 clearly defined office, production, and service occupations. Tabulations are published for eight regions of Kentucky, as shown on the map below. It should be noted that the data may be weighted by the preponderance of firms in the larger cities and may be somewhat higher than the rates paid in the smaller communities. Data from these tabulations are available, upon request, from the Kentucky Department of Commerce, Frankfort, Kentucky 40601.



Associated Industries of Kentucky Area Wage Surveys

INDUSTRIAL RESOURCES

SHEPHERDSVILLE, MT. WASHINGTON, AND  
LEBANON JUNCTION, KENTUCKY

Prepared by

The Kentucky Department of Commerce

in cooperation with

The Cities of Shepherdsville, Lebanon Junction and  
Mt. Washington

1975



This copy has been prepared by the Kentucky Department of Commerce,  
Division of Research and Planning, and the cost of printing paid from  
state funds.

Production Supervisor

Patsy Wallace

Research

Betty Clary

Clerical

Mildred Keefer

Graphics

N. C. Montague

Frank Ferrante

Tony Cecconi

Cartography

Site Development Section

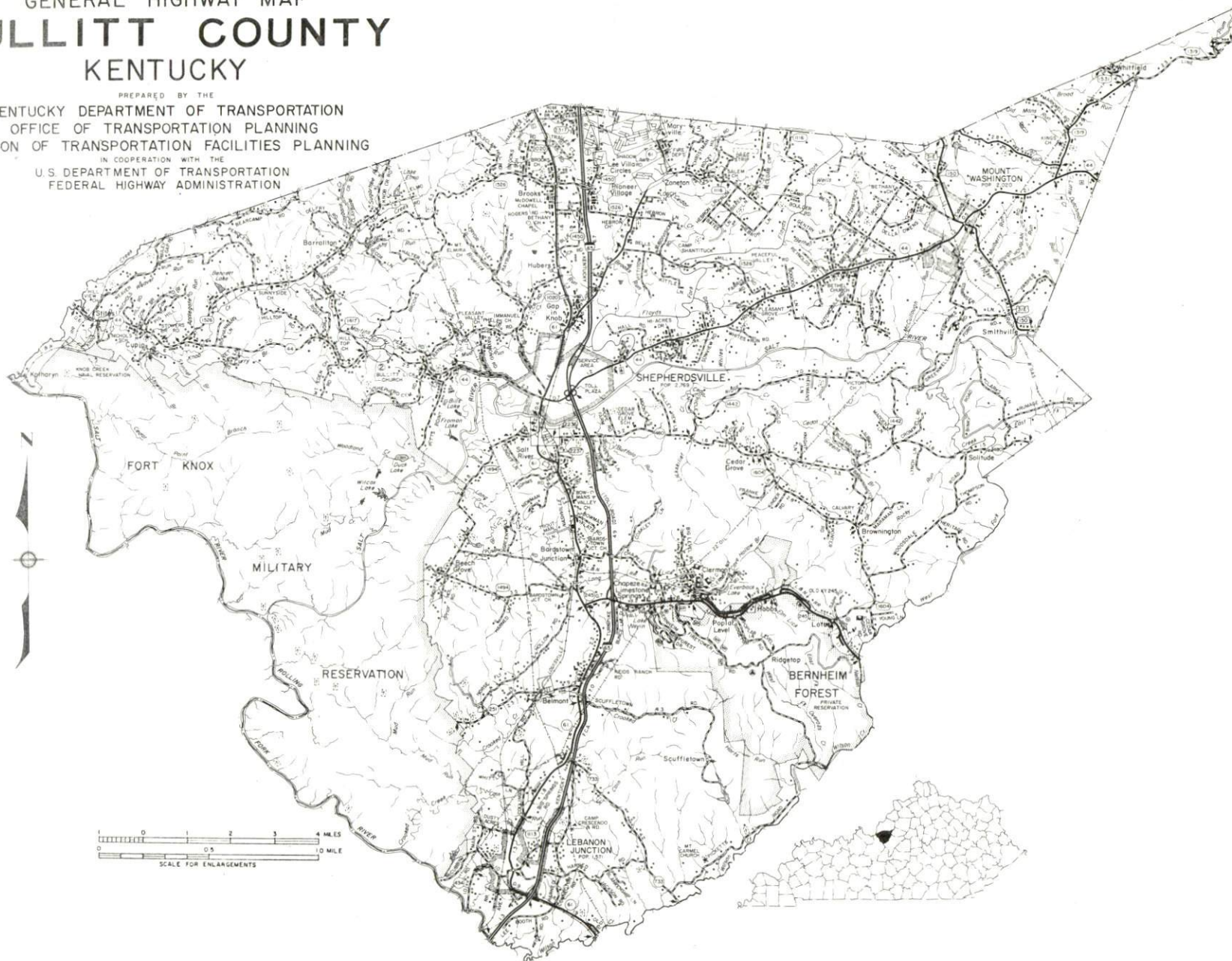
## TABLE OF CONTENTS

<u>Chapter</u>	<u>Page</u>
INDUSTRIAL SITES . . . . .	i
SHEPHERDSVILLE, MT. WASHINGTON, AND LEBANON JUNCTION, KENTUCKY - A RESOURCE PROFILE . .	1
THE LABOR MARKET. . . . .	6
Population Trends . . . . .	6
General Employment Characteristics, 1973 . . . . .	6
Manufacturing Employment Trends by Industry. . . . .	7
Bullitt County Manufacturing Firms, Their Products and Employment . . . . .	7
Wages. . . . .	9
Labor Organizations . . . . .	10
Estimated Male Labor Supply . . . . .	10
Estimated Female Labor Supply . . . . .	10
Per Capita Personal Income. . . . .	11
TRANSPORTATION . . . . .	12
Rail. . . . .	12
Truck Service . . . . .	12
Air . . . . .	14
Bus. . . . .	14
Rental Services . . . . .	14
POWER AND FUEL . . . . .	15
Electricity. . . . .	15
Natural Gas . . . . .	16
Other Fuels . . . . .	17
WATER AND SEWERAGE . . . . .	18
Water. . . . .	18
Sewerage . . . . .	23
LOCAL GOVERNMENT . . . . .	26
City. . . . .	26
County. . . . .	26
Assessed Value of Property, 1974 . . . . .	26

<u>Chapter</u>	<u>Page</u>
Property Taxes. . . . .	27
Local Property Tax Rate Per \$100 of Assessed Valuation, 1974 . . . . .	27
Utilities Gross Receipts Tax for Schools. . . . .	27
Planning and Zoning. . . . .	28
Safety . . . . .	28
Police . . . . .	28
Fire . . . . .	28
Rescue Service . . . . .	29
Sanitation . . . . .	29
 EDUCATION . . . . .	 30
Public Schools . . . . .	30
Nonpublic Schools. . . . .	30
Vocational Schools . . . . .	31
Colleges and Universities . . . . .	32
 HEALTH . . . . .	 33
Hospitals . . . . .	33
Ambulance Service . . . . .	33
Nursing Homes. . . . .	33
Public Health. . . . .	33
 OTHER LOCAL FACILITIES . . . . .	 34
Communications . . . . .	34
Library Services . . . . .	35
Religious Institutions . . . . .	36
Financial Institutions . . . . .	37
Hotels and Motels. . . . .	37
Clubs and Organizations. . . . .	37
 RECREATION. . . . .	 39
Local . . . . .	39
Area . . . . .	40
 AGRICULTURE - NATURAL RESOURCES - CLIMATE . . . . .	 41
Agriculture . . . . .	41
Natural Resources . . . . .	41
Climate . . . . .	42
 HISTORY . . . . .	 43

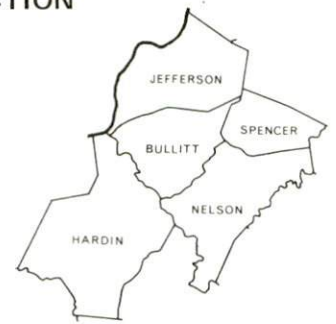
GENERAL HIGHWAY MAP  
**BULLITT COUNTY**  
KENTUCKY

PREPARED BY THE  
KENTUCKY DEPARTMENT OF TRANSPORTATION  
OFFICE OF TRANSPORTATION PLANNING  
DIVISION OF TRANSPORTATION FACILITIES PLANNING  
IN COOPERATION WITH THE  
U.S. DEPARTMENT OF TRANSPORTATION  
FEDERAL HIGHWAY ADMINISTRATION

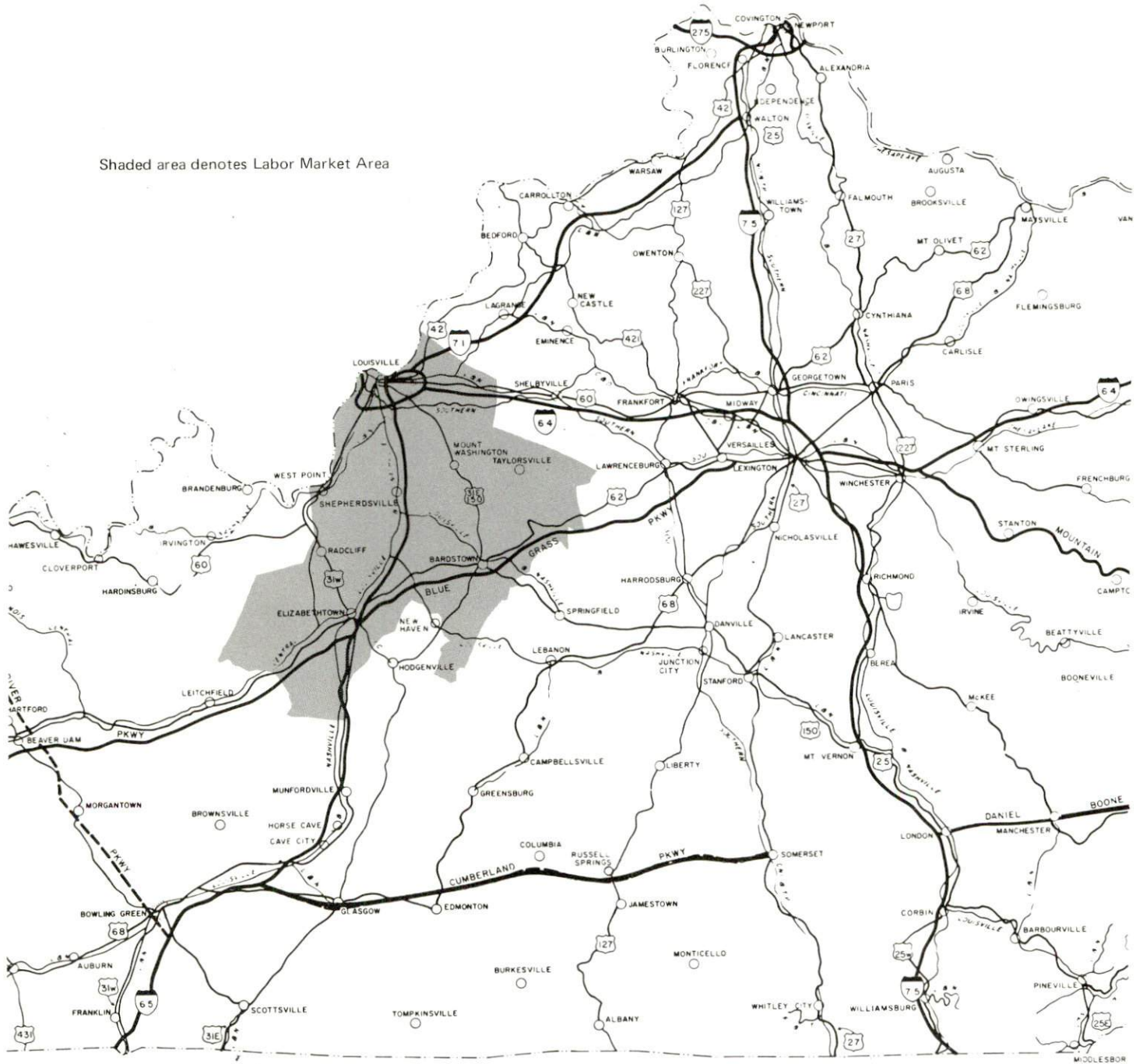




# SHEPHERDSVILLE, MT. WASHINGTON AND LEBANON JUNCTION LABOR MARKET AREA



Shaded area denotes Labor Market Area



## SHEPHERDSVILLE, MT. WASHINGTON, AND LEBANON JUNCTION, KENTUCKY - A RESOURCE PROFILE

Shepherdsville, the largest of the three incorporated communities in Bullitt County, serves as the county seat. It lies along the Salt River and is located approximately 15 miles via Interstate 65 from Louisville. Mt. Washington, the county's second largest city, is located in the north-eastern portion of the county, approximately 14 miles from Louisville. Lebanon Junction is located in the southern tip of the county, approximately 16 miles from Bardstown and 12 miles from Elizabethtown. The 1970 population of Shepherdsville was 2,769, Mt. Washington 2,020, and Lebanon Junction 1,571.

Bullitt County covers a land area of 300 square miles and is located in the Outer Blue Grass and Knobs Regions of Central Kentucky. The 1970 population of Bullitt County was 26,090. The estimated 1973 population was 31,100.

### The Economic Framework

Total employment in Bullitt County in 1973 averaged 4,820 with agriculture providing 290 jobs, manufacturing 860, trade and services 845, and government 900. Since 1964, manufacturing employment has increased by approximately 45 percent. The major industrial products in the county are liquors, offset lithographic printing, book publishing, and conveyors.

Per capita personal income in the county in 1973 was \$3,261, or \$789 below the Kentucky average. Between 1969 and 1973, per capita personal income in the county increased by 26 percent.

The Shepherdsville, Mt. Washington, and Lebanon Junction labor market area includes Bullitt, Hardin, Jefferson, Nelson and Spencer Counties. Area employment in 1973 totaled 389,300 jobs with agriculture providing 5,200 jobs, manufacturing 107,390, trade and services 124,390, and government 45,630. Manufacturing employment in this area has increased approximately 31 percent since 1964 with sharpest gains in machinery, fabricated metal products and transportation equipment industries.

### Resources for Growth

1. There is a current estimated labor supply of 21,910 men and 27,150 women available for industrial jobs in the labor market area. In addition, 45,370 young men and 43,687 young women will become 18 years of age before 1981 and potentially available for work.



2. The Louisville & Nashville Railroad provides a variety of services to Shepherdsville and Lebanon Junction. The county is bisected by Interstate 65 - Kentucky Turnpike, which links Louisville and Elizabethtown and connects with the state's major highway network. The county is also served by U. S. 31E. Five truck lines serve the county. Commercial air service is available at Standiford Field, Louisville, only 15 miles from Shepherdsville.

3. The Louisville Gas and Electric Company and the Salt River RECC provide electric power to Shepherdsville and Mt. Washington. The Kentucky Utilities Company serves Lebanon Junction. Bullitt County is served by the Kentucky Utilities Company and the Salt River RECC. Natural gas is furnished to Shepherdsville and Mt. Washington by the Louisville Gas and Electric Company, whose source of supply is Texas Gas Transmission Corporation. Natural gas service is not available in Lebanon Junction. There are four distillate fuel oil distributors and nine propane and butane distributors in the Shepherdsville-Mt. Washington-Lebanon Junction area. The raw water supply is adequate for continued growth.

4. Two school systems operate within the county. Two universities, two senior colleges, one junior college, two community colleges, and an extension campus of the University of Kentucky are located within a 50-mile radius of Shepherdsville. Four of these are located in Louisville, only 15 miles from Shepherdsville.

The new Bullitt County Vocational Education Center will open in September, 1975, and offer training in 8 different courses. The Jefferson County State Vocational-Technical School is located in Jeffersontown, only 26 miles from Shepherdsville, and offers training in 21 different courses. Elizabethtown State Vocational School, 12 miles from Lebanon Junction, offers training in 12 course areas.

### Community Programs for Improvement

#### Shepherdsville

1. An addition to the Bullitt County courthouse, now under construction, will provide space for a new jail, courtrooms and offices.
2. New recreational facilities include a public swimming pool, a public skating rink and private camping grounds. New restrooms, bleachers, playground equipment and improved lighting have been added to the park.

3. Six new businesses have opened recently. A 3-story doctor's building, a branch bank, a new Savings and Loan building, and two motels are planned.

4. Three new subdivisions have been developed and another is presently under development.

5. A microfilm reader-printer has been purchased for the Ridgway Memorial Library.

6. Two patrol cars have been purchased for the Shepherdsville Police Department.

7. Cable service has been proposed for Shepherdsville.

8. Roads are being blacktopped in the newly annexed Salt River area.

#### Mt. Washington

1. Construction on a new City Hall building is expected to start in the fall of 1975. Housed in the new building will be the police department, the fire department, city offices, and a public library.

2. A public swimming pool and a 20,000 square foot skating rink have recently opened and a 10-acre recreational park has been proposed. The park facilities will include tennis courts, ball parks, a picnic area and a community building.

3. A new 400,000 gallon per day sewage treatment plant is now in operation. Lines are being extended to provide service to new customers in the area.

4. The Peoples Bank of Mt. Washington recently doubled the size of its building and added a paved parking area.

5. Five units have been added to the Mt. Washington Shopping Center. Nine different businesses presently occupy the center. Another shopping center has been proposed.

6. Three subdivisions are presently being developed. A total of 168 new homes are to be built.

7. The Church of God has recently constructed a new building.

8. A patrol car, a base station and two walkie-talkies have been purchased for the police department.

9. Proposed sidewalk improvements are scheduled on Kentucky Highway 44 and U. S. 31E.



### Lebanon Junction

1. Renovation of City Hall is now in progress.
2. A new swimming pool has opened and recreational equipment for the playground has been purchased.
3. A new building for the Lebanon Junction branch of The Peoples Bank has a drive-in window and a paved parking area.
4. Forty new homes are planned in the two subdivisions now under development.
5. A permanent home for an existing book station is being considered.
6. A Methodist Church building has been constructed.
7. A new fire department building is now in use.
8. General street improvements are planned for the city.

### Bullitt County

1. The Bullitt County Recreation Department is conducting a comprehensive recreation program in cooperation with the schools in the county. In the northern part of the county a new swimming pool has recently opened and a general recreational park is planned.
2. Land has been acquired in north Bullitt County for a new library. Construction will begin in the near future.
3. A shopping center has recently opened near Maryville.
4. A new vocational education center is scheduled to open September, 1975 at Shepherdsville. A major addition is being constructed at the Lebanon Junction Elementary School. An elementary school at Mt. Washington and a high school in north Bullitt County are now under construction.
5. Highway improvements to be completed in phases over a ten year period include: widening of the Kentucky Turnpike to eight lanes from the Watterson Expressway to the Jefferson Freeway, and six lanes from that point south to Elizabethtown; relocating highway 61 from the

north Bullitt County line to Zoneton and conversion to a four-lane controlled access highway; new interchange at Brooks with exits and entries north and south and extension connecting Brooks Station Road and Preston Highway; new interchange at Shepherdsville with exits and entries north and south; new interchange to serve Lebanon Junction with exits and entries north and south and relocation of highway 61 in the Lebanon Junction area.

### Recreation, Entertainment and Livability

A variety of entertainment and recreation is easily accessible to Bullitt County. The metropolitan area of Louisville offers continuing cultural and sporting events. Professional and amateur groups provide quality music and theatre for the area. The J. B. Speed Art Museum has outstanding collections, including Medieval and Renaissance art. Five other museums feature displays ranging from an Egyptian Mummy to vintage railway cars. Sporting events include the renowned Kentucky Derby and professional basketball. Arts and crafts exhibits, music festivals and the Kentucky State Fair add a local flavor to the entertainment available in Louisville.

Bernheim Forest offers a contrast to the city. Located in the southeastern part of Bullitt County, this 10,000 acre national forest park is a sanctuary for plants and wildlife. Facilities include a picnic area, foot trails, fishing, nature center and museum.

My Old Kentucky Home State Park near Bardstown features guided tours of a restored Georgian Colonial Mansion. Park facilities include: gift shop, amphitheater, golf course, playground area, and camping accommodations.

Abraham Lincoln Birthplace National Historic Site, located 23 miles from Lebanon Junction, includes 116 acres of the original Thomas Lincoln farm where Abraham was born. A visitors center, gift shop and picnicking area are located here. Nearby is Lincoln's boyhood home.

## THE LABOR MARKET

### POPULATION TRENDS

Area	Population				Percent Change	
	1973*	1970	1960	1950	1960-70	1950-60
Lebanon Junction	N. A.	1,571	1,527	1,243	+ 2.9	+22.8
Mt. Washington	N. A.	2,020	1,173	--	+72.2	N. A.
Shepherdsville	N. A.	2,769	1,525	953	+81.6	+60.0
<b>Labor Market</b>						
Area	833,700	828,531	722,310	571,954	+14.7	+26.3
Bullitt County	31,100	26,090	15,726	11,349	+65.9	+38.6
Hardin County	73,100	78,421	67,789	50,312	+15.7	+34.7
Jefferson County	700,500	695,055	610,947	484,615	+13.8	+26.1
Nelson County	23,500	23,477	22,168	19,521	+ 5.9	+13.6
Spencer County	5,500	5,488	5,680	6,157	- 3.4	- 7.7

\*Provisional estimates.

Sources: U. S. Department of Commerce, Bureau of the Census, Census of Population, 1970, 1960, 1950. U. S. Bureau of the Census, Current Population Reports, Series P-26, June 1973.

### GENERAL EMPLOYMENT CHARACTERISTICS, 1973

Major Employment Group	Employment	
	Bullitt County	Labor Market Area
TOTAL	4,820	389,300
Agricultural	290	5,200
Nonagricultural	4,530	384,100
Manufacturing	860	107,390
Government	900	45,630
Trade and Services	845	124,386

Source: Kentucky Department for Human Resources, Bureau for Administration and Operations.



MANUFACTURING EMPLOYMENT TRENDS BY INDUSTRY  
SEPTEMBER 1974 AND 1964

Industry	Bullitt County			Labor Market Area		
	1974	1964	% Change	1974	1964	% Change
TOTAL	986	682	+ 44.6	109,790	83,827	+31.0
Food & Kindred Products	682	548	+ 24.5	11,736	12,464	- 5.8
Tobacco	0	0	--	11,030	8,909	+23.8
Apparel, Textiles, Leather	0	0	--	2,437	2,368	+ 2.9
Lumber, Furniture	21	6	+250.0	3,971	5,024	-21.0
Printing & Publishing, Paper	195	123	+ 58.5	9,706	6,889	+40.9
Chemicals, Petroleum & Coal, Rubber	0	5	--	9,533	7,913	+20.5
Stone, Clay & Glass	19	0	--	2,355	2,038	+15.6
Primary Metals	0	0	0	2,083	1,835	+13.5
Machinery, Metal Products, Equipment	63	0	--	55,418	35,019	+58.3
Other	6	0	--	1,521	1,368	+11.2

Source: Kentucky Department for Human Resources, Number of Workers in Manufacturing Industries Covered by Kentucky Unemployment Insurance Law Classified by Industry and County, September, 1974, September 1964.

BULLITT COUNTY MANUFACTURING FIRMS,  
THEIR PRODUCTS AND EMPLOYMENT

Firm (Establishment date) Product	Employment			
	Total	Male	Female	Organized
<u>Clermont</u>				
James B. Beam Distilling Company (1934) Whiskey, cordials, cocktails	514	225	289	*
<u>Lebanon Junction</u>				
Mac Manufacturing Company (1957) Barrel lifts, automatic barrel filling device, automatic barrel stenciler	10	9	1	

(Cont'd.)



<u>Firm (Establishment date)</u>	<u>Product</u>	<u>Employment</u>			<u>Organized</u>
		<u>Total</u>	<u>Male</u>	<u>Female</u>	
<u>Mt. Washington</u>					
Mt. Washington Ready Mix Concrete (1968)	Ready mixed concrete	10	10	0	
Mt. Washington Star, Inc. (1964)	Newspaper	3	1	2	
Walker Machine Tool Company, Inc. (1959)	Machine shop, plastic molding, molds and dies	10	9	1	
<u>Shepherdsville</u>					
A. J. Bayer Company (1973)	Conveyors	70	59	11	
Bullitt County Stone Company (1967)	Agricultural lime	30	28	2	
Greenwell Lumber Company (1960)	Rough lumber, crossties, truck flats, racks, cedar products	5	5	0	
Monarch Hardware Manu- facturing Company (1965)	Panic exit hardware	38	35	3	
The Pioneer-News (1882)	Newspaper, job printing	4	2	2	
Precast Concrete and Modern Designs (1967)	Fiberglass septic tanks and storm shelters	10	10	0	
Publishers Printing Company (1866)	Offset lithographic printing, book publishing	120	80	40	
Quality Crushed Stone Company, Inc.	Agricultural lime	15	15	0	
Quality Ready Mix, Inc. (1960)	Ready mixed concrete	5	4	1	
Charles H. Reichmuth, Inc. (1962)	Rough lumber and ties	11	11	0	
Sylvan Products of Kentucky (1952)	Wood box spring frames, wood furniture frames, furniture parts	18	18	0	
Woods Cabinet Shop (1962)	Wood kitchen cabinets	3	3	0	

\*See Labor Organizations, page 10.

Source: Kentucky Department of Commerce, Division of Research and Planning.

## WAGES

Occupational wage rates for specific industries are usually not available to most government agencies, and wage data furnished to state employment agencies by industrial employers is protected from disclosure by federal law. The most reliable up-to-date wage information can be obtained by direct contact with local employers.

Associated Industries of Kentucky, a voluntary organization of Kentucky businesses, regularly collects occupational wage rates and fringe benefits data from participating member firms. Data is compiled for over 130 clearly defined office, production, and service occupations. Tabulations are published for eight regions of Kentucky, as shown on the map below. It should be noted that the data may be weighted by the preponderance of firms in the larger cities and may be somewhat higher than the rates paid in the smaller communities. Data from these tabulations are available, upon request, from the Kentucky Department of Commerce, Frankfort, Kentucky 40601.

LABOR ORGANIZATIONS

<u>Union</u>	<u>Representing manufacturing workers at:</u>
Distillery, Rectifying, Wine & Allied Workers International Union of America	James B. Beam Distilling Company

ESTIMATED MALE LABOR SUPPLY -  
SHEPHERDSVILLE, MT. WASHINGTON, AND  
LEBANON JUNCTION LABOR MARKET AREA

<u>Area</u>	<u>Current</u>			<u>Under-</u> <u>employed</u>	<u>Future</u>
	<u>Total</u>	<u>Not in</u> <u>Labor Force</u>	<u>Unemployed</u>		<u>Reaching 18 yrs.</u> <u>of age before 1981</u>
Labor Market					
Area	21,910	40	8,530	13,340	45,370
Bullitt	540	0	170	370	1,638
Hardin	3,110	0	510	2,600	3,454
Jefferson	17,170	0	7,220	9,950	38,442
Nelson	920	0	570	350	1,561
Spencer	170	40	60	70	275

Sources: Kentucky Department for Human Resources, Kentucky Labor Supply Estimates by County, 1974. Kentucky Department of Commerce, Future Labor Supply before 1981.

ESTIMATED FEMALE LABOR SUPPLY -  
SHEPHERDSVILLE, MT. WASHINGTON, AND  
LEBANON JUNCTION LABOR MARKET AREA

<u>Area</u>	<u>Current</u>			<u>Under-</u> <u>employed</u>	<u>Future</u>
	<u>Total</u>	<u>Not in</u> <u>Labor Force</u>	<u>Unemployed</u>		<u>Reaching 18 yrs.</u> <u>of age before 1981</u>
Labor Market					
Area	27,150	5,650	4,880	16,620	43,687
Bullitt	890	190	100	600	1,538
Hardin	6,420	5,130	150	1,140	3,276
Jefferson	18,820	0	4,420	14,400	37,034
Nelson	610	0	170	440	1,510
Spencer	410	330	40	40	329

Sources: Kentucky Department for Human Resources, Kentucky Labor Supply Estimates by County, 1974. Kentucky Department of Commerce, Future Labor Supply before 1981.

PER CAPITA PERSONAL INCOME

<u>Area</u>	<u>1973</u>	<u>1969</u>	<u>% Change</u>
Bullitt County	\$3,261	\$2,583	+26.2
Labor Market Area			
Range	\$3,261 to 5,292	\$2,528 to 4,090	N. A.
Kentucky	4,050	2,894	+39.9
U. S.	5,041	3,733	+35.1

Sources: U. S. Department of Commerce, Office of Business Economics, Survey of Current Business, August, 1974. U. S. Department of Commerce, Bureau of Economic Analysis, April, 1975.



## TRANSPORTATION

### Rail

Line serving Shepherdsville - Louisville and Nashville Railroad Services - One local freight (turn around service) Monday through Friday; six southbound and six northbound freights daily; team track space for six cars; nearest piggyback facilities are located at Louisville

Line serving Lebanon Junction - Louisville and Nashville Railroad Services - Two local freights - south on Monday, Wednesday, and Friday, north on Tuesday, Thursday and Saturday; six southbound and six northbound freights daily; team track space for ten cars; siding space for 30 cars; nearest piggyback facilities are located at Louisville

For details on routing, schedules, rates, and services, contact:

Manager of Industrial Development  
Louisville and Nashville Railroad  
908 West Broadway  
Louisville, Kentucky 40203

### Truck Service

<u>Company</u>	<u>Home Office</u>
<u>Shepherdsville</u>	
Distillery Transfer Service, Inc.	Depot Bardstown, Kentucky 40004
<u>Mt. Washington</u>	
Overnite Transportation Company	1100 Commerce Road Richmond, Virginia 23209
Consolidated Freightways Corporation	175 Linfield Drive Menlo Park, California 94025
Cooper-Jarrett, Inc.	23 South Essex Avenue Orange, New Jersey 07050
Distillery Transfer Service, Inc.	Depot Bardstown, Kentucky 40004
Yates Truck Line, Inc.	Maud, Kentucky 40042

(Cont'd.)

CompanyHome OfficeLebanon Junction

Cooper-Jarrett, Inc.

23 South Essex Avenue  
Orange, New Jersey 07050Distillery Transfer Service,  
Inc.Depot  
Bardstown, Kentucky 40004Other Freight ServicesShipping Center

United Parcel Service

Louisville, Kentucky, 15 miles  
from Shepherdsville

REA Express

Louisville, Kentucky, 15 miles  
from ShepherdsvilleHIGHWAY MILES AND TRUCK TRANSIT TIME IN DAYS FROM  
SHEPHERDSVILLE, KENTUCKY, TO SELECTED MARKET CENTERS

City	Delivery		City	Delivery	
	Highway Miles	Time TL		Highway Miles	Time TL
Atlanta, Ga.	417	*	Los Angeles, Calif.	2,225	5
Birmingham, Ala.	351	*	Louisville, Ky.	15	$\frac{1}{2}$
Chicago, Ill.	316	*	Nashville, Tenn.	165	*
Cincinnati, Ohio	115	*	New Orleans, La.	695	3
Cleveland, Ohio	367	*	New York, N. Y.	784	3
Detroit, Mich.	390	*	Pittsburgh, Pa.	409	2
Knoxville, Tenn.	267	*	St. Louis, Mo.	279	*

\*Overnight.

Source: Delivery Time only - Distillery Transfer Service, Inc. , Depot,  
Bardstown, Kentucky 40004.

Air

Nearest Commercial

Standiford Field  
Location: Louisville, 15 miles from Shepherdsville  
Runways: 3 paved  
Length: 7,800 feet, 5,000 feet, 7,250 feet  
Traffic  
Control: Control tower, approach, ground and departure control, guards, radio  
Lighting: Runways, obstructions, beacon, approach and touchdown lights, center line on runways 1-19  
Services: TWA, American, Eastern, Delta, Piedmont, Ozark and Allegheny Airlines; Louisville-Jefferson County Air Board; 80, 100, 115 jet fuel; storage; major A & E repairs; Rent-A-Car Service; restaurant, taxi, and city bus service; Weather Bureau  
Air Freight  
Service: Freight carrying airlines regularly service this terminal

Bus - Southern Greyhound Bus Lines serve Mt. Washington

Kentucky Bus Lines serve Lebanon Junction

Rental Services

<u>Shepherdsville</u>	<u>Mt. Washington</u>	<u>Lebanon Junction</u>
Nearest car, truck and trailer rentals are in Louisville, 15 miles distant	Nearest car, truck and trailer rentals are in Louisville, 14 miles distant	Nearest car, truck and trailer rentals are in Bardstown, 16 miles distant, and Elizabethtown, 12 miles distant



POWER AND FUEL

Electricity

Company serving Shepherdsville - (1) Louisville Gas and Electric  
Company (2) Salt River RECC  
Source of power - (1) Louisville Gas and Electric Company (2) East  
Kentucky Power Cooperative  
Total generating capacity - (1) 1,509,000 KW, (2) 548,000 KW  
For industrial rates contact:

Louisville Gas and Electric Company  
311 West Chestnut Street  
Louisville, Kentucky 40202

and/or

Salt River RECC  
111 West Brashear Avenue  
Bardstown, Kentucky 40004

Company serving Mt. Washington - (1) Louisville Gas and Electric  
Company (2) Salt River RECC  
Source of power - (1) Louisville Gas and Electric Company (2) East  
Kentucky Power Cooperative  
Total generating capacity - (1) 1,509,000 KW, (2) 548,000 KW  
For industrial rates contact:

Louisville Gas and Electric Company  
311 West Chestnut Street  
Louisville, Kentucky 40202

and/or

Salt River RECC  
111 West Brashear Avenue  
Bardstown, Kentucky 40004

Company serving Lebanon Junction - Kentucky Utilities Company  
Source of power - Kentucky Utilities Company  
Total generating capacity - 1,735,000 KW  
For industrial rates contact:

Kentucky Utilities Company  
Box 218  
Elizabethtown, Kentucky 42701

Company serving Bullitt County - (1) Salt River RECC (2) Kentucky  
Utilities Company  
Source of power - (1) East Kentucky Power Cooperative (2) Kentucky  
Utilities Company  
Total generating capacity - (1) 548,000 KW (2) 1,735,000 KW  
For industrial rates contact:

Salt River RECC  
111 West Brashear Avenue  
Bardstown, Kentucky 40004

and/or

Kentucky Utilities Company  
Box 218  
Elizabethtown, Kentucky 42701

#### Natural Gas

Company serving Shepherdsville - Louisville Gas and Electric Company  
Source of supply - Texas Gas Transmission Company  
Size of transmission mains - (2) 26-inch (supplier); 8-inch (distributor)  
Distribution mains - 2, 4, 6, and 8 inches  
Distribution pressure - 35 psi  
Btu content - 1020 per cubic foot; Specific gravity - .60  
For rates and supplies contact:

Gas Sales Department  
Louisville Gas and Electric Company  
P. O. Box 354  
Louisville, Kentucky 40201

Company serving Mt. Washington - Louisville Gas and Electric Company  
Source of supply - Texas Gas Transmission Company  
Size of transmission mains - (2) 26-inch (supplier); 8-inch (distributor)  
Distribution mains - 2, 4, and 8 inches  
Distribution pressure - 35 psi  
Btu content - 1020 per cubic foot  
Specific gravity - .60  
For rates and supplies contact:

Gas Sales Department  
Louisville Gas and Electric Company  
P. O. Box 354  
Louisville, Kentucky 40201

Lebanon Junction does not have natural gas service.

### Other Fuels

#### Propane and butane

Big 3 Gas Company of Lebanon Junction, Preston Highway,  
Lebanon Junction  
Bullitt County LP Gas Company, Highway 61, Shepherdsville  
Coleman Gas Service Company of Kentucky, 8000 Crittenden Drive,  
Louisville  
Cundiff Oil and LP Gas, Highway 61, Shepherdsville  
Doxol Gas of Bullitt County, Highway 61, Shepherdsville  
Stout's Building Center, 309 North Main Street, Mt. Washington  
Stout's Building Center, Preston Highway, Shepherdsville  
Thermogas Company of Louisville, 6616 Six Mile Lane, Louisville  
Williams Energy Company, Highway 61, Shepherdsville

#### Fuel oils

Distillate fuel oil -

Arco Service Station, North Main Street, Mt. Washington  
Cundiff Oil and LP Gas, Highway 61, Shepherdsville  
Dawson and Reesor Service Station and Fuel Oil, Second and Buckman  
Street, Shepherdsville  
Standard Oil Company, Shepherdsville

Residual fuel oil - Arrangements must be made with the refinery

Low sulphur content coal - Available in Kentucky



## WATER AND SEWERAGE

### Water

Company serving Shepherdsville - Shepherdsville Water Works  
Source - Salt River  
Treatment plant capacity - 644,000 gpd\*  
Average daily consumption - 270,000 gallons  
Peak daily consumption - 310,000 gallons  
Type treatment - Settling basin, alum, soda ash, lime, chlorine,  
and fluoride  
Storage capacity - 150,000 gallons  
Size lines - 2, 4, 6, and 8 inches  
Average pressure - 65 psi  
Average temperature - 60 degrees F.

#### MONTHLY WATER RATES FOR WHOLESALE AND INDUSTRIAL CONSUMERS

---

First	2,000 gallons	\$5.00 (Minimum bill)
Next	3,000 gallons	1.60 per M gallons
Next	5,000 gallons	1.30 per M gallons
Next	15,000 gallons	1.15 per M gallons
Next	25,000 gallons	1.00 per M gallons
Next	50,000 gallons	.90 per M gallons
Next	100,000 gallons	.80 per M gallons
All over	200,000 gallons	.70 per M gallons

Tap-on charge: \$200

---

\*Based on 23 hours pumping.

Company serving Mt. Washington - Mt. Washington Sewer and Water  
 Purchase treated water from - Louisville Water Company  
 Average daily consumption - 195,000 gallons  
 Peak daily consumption - 253,000 gallons  
 Storage capacity - 300,000 gallons  
 Size lines - 12, 8, 6, and 4 inches  
 Average pressure - 160 psi  
 Average temperature - 64 degrees F.

MONTHLY WATER FEES FOR WHOLESALE  
 AND INDUSTRIAL CONSUMERS

---

0 - 2,490 gallons	\$ 5.90
2,500 - 3,490 gallons	7.10
3,500 - 4,490 gallons	8.30
4,500 - 5,490 gallons	9.50
5,500 - 6,490 gallons	10.20
6,500 - 7,490 gallons	10.90
7,500 - 8,490 gallons	11.60
8,500 - 9,490 gallons	12.30
9,500 - 10,490 gallons	13.00
10,500 - 11,490 gallons	13.70
11,500 - 12,490 gallons	14.40
12,500 - 13,490 gallons	15.10
13,500 - 14,490 gallons	15.80
14,500 - 15,490 gallons	16.50

All over 15,500 gallons \$.60 per M gallons plus tax.

Tap-on charge: \$250

Company serving Lebanon Junction - Lebanon Junction Water Works\*  
 Source - Rolling Fork  
 Treatment plant capacity - 240,000 gpd\*\*  
 Average daily consumption - 120,000 gallons  
 Peak daily consumption - 140,000 gallons  
 Type treatment - Chlorination, alum, lime, settling, and soda ash  
 Storage capacity - 110,000 gallons  
 Size lines - 8, 6, and 4 inches  
 Average pressure - 60 psi

MONTHLY WATER FEES FOR WHOLESALE  
 AND INDUSTRIAL CONSUMERS

First	2,000 gallons	\$12.00 (Minimum)
Next	4,000 gallons	1.30 per M gallons
Next	4,000 gallons	1.20 per M gallons
Next	5,000 gallons	1.10 per M gallons
Next	5,000 gallons	1.00 per M gallons
Next	5,000 gallons	.90 per M gallons
All over	25,000 gallons	.75 per M gallons

Tap-on charge: \$350

---

\*An Infiltration/Inflow Analysis is proposed which will provide the data necessary for decisions to be made concerning what waste-water facilities will be needed to expand the present system to all residents of the city and populated adjacent areas, and to meet current stream water qualities standards.

\*\*Based on 16 hour pumping.



Name of water district - Salt River Water District  
 Area served - Annexed area of Shepherdsville and surrounding area  
 Date when water district began operating - 1963  
 Source of raw water - Salt River  
 Capacity of treatment plant - 168,000 gpd\*  
 Type of treatment - Chlorine, alum, lime  
 Average amount of water used in a 24-hour period - 133,641 gallons  
 Peak amount of water used in a 24-hour period - 231,000 gallons  
 Storage capacity - 200,000 gallons  
 Average pressure - 45 psi  
 Average temperature - 50 degrees F.  
 Size lines - 2, 4, 6, and 8 inches  
 Rates -

First	3,000 gallons	\$7.00 (Minimum bill)
Next	5,000 gallons	1.25 per M gallons
Next	7,000 gallons	1.00 per M gallons
Next	10,000 gallons	.80 per M gallons
All over	25,000 gallons	.70 per M gallons

Tap-on charge: \$200\*\*

---

\*Based on 8 hour pumping.

\*\*A higher fee is charged if the actual cost is more than \$200.

Name of water district - Kentucky Turnpike Water District  
 Area served - Northwest Bullitt County  
 Date when water district began operating - 1968  
 Source of supply of treated water - Louisville Water Company  
 Average amount of water used in a 24-hour period - 162,000 gallons  
 Peak amount of water used in a 24-hour period - 245,000 gallons  
 Storage capacity - 750,000 gallons  
 Average pressure - 35 psi  
 Average temperature - 54 degrees F.  
 Size lines - 6, 8, and 12 inches  
 Rates -

Demand Charge (Minimum Monthly Bill)

<u>Meter Size</u>	<u>Allowable Use</u>	<u>Minimum Bill</u>
5/8 and 3/4 inch	1,000 gallons	\$ 1.00
1 inch	5,000 gallons	4.40
1 1/2 inch	10,000 gallons	9.40
2 inch	15,000 gallons	15.60
3 inch	35,000 gallons	35.60
4 inch	65,000 gallons	64.40
6 inch	150,000 gallons	146.40
8 inch	250,000 gallons	248.60

Commodity Charge

First 200,000 gallons @ \$ .40 per 1,000 gallons  
 Next 1,300,000 gallons @ .30 per 1,000 gallons

All consumption in excess of 1,500,000 gallons @ \$ .15 per 1,000 gallons

Surcharge - Monthly

5/8 and 3/4 inch service	\$ 6.00
1 inch service	24.00
1 1/2 inch service	54.00
2 inch service	96.00
3 inch service	216.00
4 inch service	384.00
6 inch service	884.00

Tap-on charge:	3/4 inch	\$300
	1 inch	400
	1 1/2 inch	500
	2 inch	600

Surface water sources - Salt River and Rolling Fork  
Average discharge - Salt River at Shepherdsville 1,526 cfs (36 years, USGS); Rolling Fork near Boston 1,726 cfs (36 years, USGS)  
Expected ground water yield - 500 to 1,000 gpm in northwestern tip of county along Ohio River; 5 to 50 gpm in areas adjacent to Salt River; 5 gpm or less over remainder of county.

#### Sewerage

Company serving Shepherdsville - Shepherdsville Sewer Works  
Design capacity - 300,000 gpd  
Average daily flow - 180,000 gallons  
Treatment - Partial primary and secondary  
Type treatment - Extended aeration and activated sludge  
Treated effluent discharged into - Salt River  
Size of sanitary mains - 8 inches  
Rates - 65 percent of monthly water bill

Tap-on charge: \$100



Company serving Mt. Washington - Mt. Washington Sewer and Water Works\*

Design capacity - 400,000 gpd (peak hydraulic capacity 1,000,000 gpd)

Average daily flow - 160,000 gallons

Treatment - Secondary

Type treatment - Grit chamber, comminutor, aeration tanks, clarifier, chlorine, contact tank digester to drying beds

Treated effluent discharged into - McCullough Run to Salt River

Size of sanitary mains - 16, 14, 12, 10, 8 and 6 inches

Rates - Based on water usage

0 - 2,490 gallons	\$ 7.80
2,500 - 3,490 gallons	9.37
3,500 - 4,490 gallons	10.96
4,500 - 5,490 gallons	12.54
5,500 - 6,490 gallons	13.46
6,500 - 7,490 gallons	14.39
7,500 - 8,490 gallons	15.31
8,500 - 9,490 gallons	16.24
9,500 - 10,490 gallons	17.16
10,500 - 11,490 gallons	18.08
11,500 - 12,490 gallons	19.01
12,500 - 13,490 gallons	19.93
13,500 - 14,490 gallons	20.86
14,500 - 15,490 gallons	21.78

Users who are not connected to city water - \$12.75 per month

Sewers, all over 15,500 gallons - \$ .80 per 1,000 gallons

Tap-on charge: \$500

---

\*The sewerage system was put into operation in August 1974. Presently sewers are being extended into two subdivisions which are under development.

Company serving Lebanon Junction - Lebanon Junction Sewage Treatment  
Plant

Design capacity - 280,000 gpd

Average daily flow - 110,000 gallons

Treatment - Primary and secondary

Type treatment - aeration, clarification, chlorination

Treated effluent discharged into - Rolling Fork River

Size of sanitary mains - 8 and 10 inches

Rates - 50 percent of monthly water bill

Tap-on charge: \$350

LOCAL GOVERNMENT

City

Shepherdsville

Structure - Mayor - 4-year term; 6 councilmen - 2-year terms

Budget 1975 - General Fund \$180,160

Water and Sewer Fund 174,729

Fees and licenses - Business licenses vary from \$25 to \$400 per year;  
unloading licenses vary from \$25 to \$200 per year

Mt. Washington

Structure - Mayor - 4-year term; 6 councilmen - 2-year terms

Budget 1974 - General Fund \$ 60,676

Water and Sewer Fund 144,877

Fees and licenses - Business licenses vary from \$10 to \$1,000 per year;  
unloading licenses \$10 per year; vehicle tax \$5 per car

Lebanon Junction

Structure - Mayor - 4-year term; 6 councilmen - 2-year terms

Budget 1974 - General Fund \$ 60,927

Water and Sewer Fund 80,141

Fees and licenses - Business licenses vary from \$10 to \$400 per year;  
unloading license \$25 per year; vehicle tax \$5 per car

County

Structure - County Judge - 4-year term; 4 magistrates - 4-year terms

Budget 1974-75 - General Fund \$317,050; Road Fund \$248,000

Assessed Value of Property, 1974

<u>Classes of Property</u>	<u>Shepherdsville</u>	<u>Mt. Washington</u>
Real Estate	\$20,251,284	\$11,232,022
Tangibles	3,756,352	3,290,278
Public Service	1,275,406	
<u>Classes of Property</u>	<u>Lebanon Junction</u>	<u>Bullitt County</u>
Real Estate	\$ 3,067,670	\$153,911,716
Tangibles	878,133	29,753,628
Public Service	713,086	19,587,847

## Property Taxes

Land and buildings are taxed by the state and may be taxed by local jurisdictions. The state rate is \$0.015 per \$100 of assessed valuation.

Tangible personal property owned by manufacturers (automobiles, trucks, finished goods, office furniture, office equipment) is taxed by the state at \$0.15 per \$100 and may be taxed by local jurisdictions.

Manufacturing machinery, raw materials inventories, pollution control equipment, and goods in process inventories are not subject to local taxation. The state rate is \$0.15 per \$100.

Property stored in public warehouses is not subject to local taxation. The state rate is only \$0.015 per \$100.

All property is assessed at 100 percent of fair cash value.

### Local Property Tax Rate Per \$100 of Assessed Valuation, 1974\*

<u>Taxing Jurisdiction</u>	<u>Shepherdsville</u>	<u>Mt. Washington</u>	<u>Lebanon Junction</u>
County	\$ .170	\$ .170	\$ .170
School	.527	.527	.527
City	.220	.230**	.365
<u>Bullitt County</u>			
County	\$ .170		
School	.527		
Special (not county wide):	Plum Creek #1 Watershed		\$ .022
	Zoneton Fire Protection		.050
	Mt. Washington Fire District		.035

### Utilities Gross Receipts Tax for Schools

Bullitt County levies a 3 percent tax on utilities receipts for schools. This tax is paid by all consumers of utilities. Exempted are receipts from utilities services that are resold and the receipts from the sale of energy or energy producing fuels that exceed 3 percent of the cost of production in manufacturing, processing, mining or refining.

\*Kentucky Department of Revenue, Kentucky Property Tax Rates, 1974.

\*\*Public Service Company - \$.295.



Planning and Zoning

Joint agency - Bullitt County Planning and Zoning Commission\*  
 Zoning enforced - All areas  
 Subdivision regulations enforced - In city of Shepherdsville  
 Local codes enforced - Building and housing codes - Shepherdsville  
 Mandatory state codes enforced - Plumbing, National Fire Protection  
 Association Code, National Building Code (for major buildings and  
 residential construction containing more than 12 bedrooms per building)

Safety

<u>Police</u>	<u>Shepherdsville</u>	<u>Mt. Washington</u>	<u>Lebanon Junction</u>
Total staff	7	3	2
Radio-patrol cars	4	2	2
<u>Fire</u>			
American Insurance Association Fire Rating	8 and 9	7	8
Volunteers	30	30	26
Equipment:			
1,000 gpm pumper	1		
750 gpm pumpers	1		1
500 gpm pumpers	1	2	2 (one with 1,500 gallon tank)
250 gpm pumper		1 (with 1,250 gallon tank)	
80 gpm pump on jeep		1 (with 75 gallon tank)	
35 gpm pump on truck		1	
Utility truck	1		1
Rescue truck			1
Tank truck	1 (1,500 gallon)		
Boat	1		
Drag bar	1		
Other	Resuscitator		Resuscitator

\*Includes incorporated areas of Shepherdsville, Mt. Washington, and  
 Lebanon Junction.

<u>Fire</u>	<u>Bullitt County Sheriff's Dept.</u>	<u>Bullitt County Police Dept.</u>
Total staff	11	7*
Radio-patrol cars	10	7

Rescue Service

Kentucky Rescue Squad:\*\*

Number of volunteers - 3

Equipment - 3 sets of scuba diving equipment, 1 boat, 1 drag bar

Personnel training - Two volunteers have fire fighting training, one volunteer has emergency medical technician's training, all have training in scuba diving and radiological monitoring

Sanitation

	<u>Shepherdsville</u>	<u>Mt. Washington</u>	<u>Lebanon Junction</u>
Type service	Private	Private	Private
Fee charged:			
residential	\$3 per month	\$2.70 per month	\$3 per month
business	Contract	\$22 to \$70 per month	Contract
Collection frequency:			
residential	Weekly	Weekly	Weekly
business	Contract	Twice weekly	Contract
Disposal method	County landfill	County landfill	County landfill

Residents of Bullitt County may haul solid waste to landfill without charge for use of landfill. Commercial businesses hauling solid waste to the landfill pay a fee of \$6 per load. The fee is negotiated for industrial use.

\*Includes 3 dispatchers who also serve the Bullitt County Sheriff's Department.

\*\*Based at Lebanon Junction.

## EDUCATION

### Public Schools

	<u>Bullitt County</u>
Total Enrollment (Fall 1974)	8,687
Elementary	4,875
Junior High	2,112
High School	1,700
Student-Teacher Ratio	26 - 1
Elementary	28 - 1
Junior High	23 - 1
High School	25 - 1
Percent High School Graduates to College	25.9
Expenditures Per Pupil (1973-74)	\$527.45
Bonded Indebtedness, June 30, 1974	\$6,558,000

### Nonpublic Schools

Total Enrollment	359
Elementary	359
High School	0
Student-Teacher Ratio	22 - 1
Elementary	22 - 1

Vocational Schools

Nearest State Schools

	Jefferson County State	Elizabethtown State
	Vocational-Technical School	Vocational School
Location	Jeffersontown	Elizabethtown
Miles Distant	26 miles from	12 miles from
	Shepherdsville	Lebanon Junction
Curriculum	Agriculture	Health Occupations
	Mechanics	Inhalation Respiratory
	Horticulture	Therapy
	Business and Office	Trade and Industries
	Data Processing	Appliance Repair
	Clerical	Auto Mechanics
	Secretarial	Carpentry-Building
	Marketing and Distributive	Trade
	Education	Commercial Foods
	Health Occupations	Drafting
	Dental Assistant	Electricity
	Practical Nursing	Machine Shop
	Home Economics	Radio and TV Service
	Floral Design	Industrial Machine
	Learning Lab	Repair
	Technical	Commercial Heating and
	Electronics (Communications)	Refrigeration
	Trade and Industrial	
	Air Conditioning and	
	Refrigeration	
	Auto Body Repair	
	Auto Mechanics	
	Commercial Foods	
	Drafting	
	Machine Shop	
	Office Machine Repair	
	Printing	
	Radio and TV Repair	
	Welding	



Nearest Area Education Center

Location Bullitt County Vocational  
Education Center\*  
Curriculum Shepherdsville  
Health Occupations  
Practical Nursing  
Distributive Education  
Trade and Industries  
Auto Mechanics  
Graphic Arts  
Heating and Air Conditioning  
Commerical Foods  
Radio and TV Repair  
Welding

Arrangements can be made to provide training in the specific production skills required by an industrial plant. Instruction may be conducted either in the vocational school or in the industrial plant, depending upon the desired arrangement and the availability of special equipment.

Colleges and Universities

<u>Name</u>	<u>Area - Within 50 miles of Shepherdsville</u>		
	<u>Location</u>	<u>Enrollment (Fall, 1974)</u>	<u>Highest Degree Conferred</u>
University of Louisville	Louisville	14, 343	Ph. D. , M. D. , D. M. D. , J. D.
Spalding College	Louisville	1, 130	Masters
Bellarmino College	Louisville	1, 353	Baccalaureate
Jefferson Community College	Louisville	4, 137	Associate
Fort Knox Extension Campus, University of Kentucky	Fort Knox	**	Associate
Elizabethtown Community College	Elizabethtown	978	Associate
St. Catharine Junior College	St. Catharine	125	Associate
Indiana University Southeast	New Albany, Indiana	2, 745***	Masters

\*New Bullitt County Vocational Education Center will open September, 1975.

\*\*Enrollment is included in total enrollment of the University of Kentucky which in 1974 was 21, 586.

\*\*\*1973 enrollment.

## HEALTH

### Hospitals

Excellent major medical facilities are available in Louisville, 15 miles from Shepherdsville, 14 miles from Mt. Washington, and 28 miles from Lebanon Junction. Also hospitals at Bardstown and Elizabethtown are within 15 miles of Lebanon Junction.

### Ambulance Service

Name - Superior Ambulance Service  
Staff - 9  
Service - 24-hour service in Bullitt County  
Equipment - 3 ambulances

### Nursing Homes

	<u>Number</u>	<u>Beds</u>
Personal care homes	1	62

### Public Health

Facility - Bullitt County Health Center  
Staff - Three clerks (two part time), two registered nurses (one part time), one sanitarian (part time), one plumbing inspector (part time)  
Programs - Neurological clinic, communicable disease, family planning, Kentucky Medical Assistance Program, diabetes testing, developmental disability, school program including kidney screening, hearing and vision tests, and T. B. skin tests

Facility - Bullitt County Center of River Region Mental Health and Mental Retardation Board  
Staff - Three social workers (one part time), two psychiatrists (part time), one medical records librarian, one nurse (part time), one alcohol counselor (part time), one psychologist (part time)

## OTHER LOCAL FACILITIES

### Communications

	<u>Shepherdsville</u>	<u>Mt. Washington</u>
Telephone -	Echo Telephone Company	Echo Telephone Company
Services -	Standard	Standard
Telegraph -	Western Union	Western Union
Services -	Toll free phone number	Toll free phone number
Postal - U. S. Post Office		
Class -	First	Second
Mail received -	Twice daily	Twice daily
Mail dispatched -	Twice daily	Twice daily
Newspapers -	The Pioneer News	Mt. Washington Star
Weekly and circulation -	4,000	1,400
Other papers received from -	Mt. Washington, Louisville and Elizabethtown, Kentucky	Shepherdsville and Louisville, Kentucky
Radio -		
Stations received from -	Louisville, Bardstown, Elizabethtown and Ft. Knox, Kentucky; Cincinnati, Ohio; Nashville, Tennessee	Louisville, Bardstown, Harrodsburg, Elizabethtown and Ft. Knox, Kentucky; Cincinnati, Ohio; Nashville, Tennessee
Television -		
Reception from -	Louisville, Kentucky	Louisville, Kentucky
Kentucky Educational Television -	Elizabethtown transmitter, Channel 23; Louisville transmitter, Channel 68	Elizabethtown transmitter, Channel 23; Louisville transmitter, Channel 68

## Communications

### Lebanon Junction

Telephone - Services -	South Central Bell Telephone Company Standard
Postal - U. S. Post Office Class - Mail received - Mail dispatched -	Second Once daily Once daily
Newspapers - Papers received from -	Shepherdsville, Louisville, Bardstown and Elizabethtown, Kentucky
Radio - Stations received from -	Louisville, Bardstown, Elizabethtown, and Fort Knox, Kentucky; Cincinnati, Ohio; Nashville, Tennessee
Television - Reception from -  Kentucky Educational Television -	Louisville, Kentucky; Nashville, Tennessee  Elizabethtown transmitter, Channel 23 Louisville transmitter, Channel 68

## Library Services

Public library - Ridgway Memorial Library, Shepherdsville  
Size collection - 37,596 volumes  
Circulation, 1973-74 - 113,625  
Services - Magazines, records and player, framed paintings, information file, art, story hour, filmstrips, copying machine, microfilm reader-printer, meeting room, children's summer program, stationary bookmobiles located at Mt. Washington and Lebanon Junction



Religious Institutions

	<u>Shepherdsville</u>	<u>Mt. Washington</u>
Number of churches -	8	8
Denominations	Baptist	Baptist
	Catholic	Catholic
	Christian	Christian
	Church of Christ	Methodist
	Church of God	Church of God
	First Church of the Nazarene	Church of Christ
	Methodist	
	Presbyterian	
Nearest Synagogues -	Louisville	Louisville
Congregations	Adath Israel (reform)	Adath Israel (reform)
	Adath Jeshurun (conservative)	Adath Jeshurun (conservative)
	Anshei Sfard (orthodox)	Anshei Sfard (orthodox)
	Brith Shalom (reform)	Brith Shalom (reform)
	Keneseth Israel (orthodox)	Keneseth Israel (orthodox)

Lebanon Junction

Number of churches -	5
Denominations	Baptist
	Catholic
	Christian
	Church of God
	Methodist
Nearest Synagogues -	Louisville
Congregations	Adath Israel (reform)
	Adath Jeshurun (conservative)
	Anshei Sfard (orthodox)
	Brith Shalom (reform)
	Keneseth Israel (orthodox)

Financial Institutions

<u>Banks</u>	<u>Assets</u>	<u>Deposits</u>	<u>Statement Date</u>
The Peoples Bank of Mt. Washington	\$ 9,922,785	\$ 9,007,351	12/31/74
Bullitt County Bank (Shepherdsville)	10,791,746	9,330,347	12/31/74
The Peoples Bank* (Shepherdsville)	15,313,000	13,524,000	12/31/74

<u>Savings and Loan Associations</u>	<u>Assets</u>	<u>Shared Accounts</u>	<u>Statement Date</u>
Bullitt Federal Savings and Loan Association	\$ 8,053,118	\$ 6,611,450	12/31/74

Hotels and Motels

Bullitt County

Total number - 2

Total units - 137

Clubs and Organizations

Shepherdsville

Business and Civic - Lions Club, Bullitt County Jaycees, PTA

Fraternal - Masons

Women's - Eastern Star, Homemakers, Woman's Club

Youth - Boy Scouts, Cub Scouts, 4-H, FFA, FTA

Other - Bullitt County Saddle Club, Peaceful Valley Saddle Club

---

\*A branch bank is located at Lebanon Junction.

Mt. Washington

Business and Civic - Lions Club, PTA, Jaycees

Fraternal - Masons

Women's - Eastern Star, Homemakers, Woman's Club, Jaycettes

Youth - Boy Scouts, Cub Scouts, 4-H, FFA, PTA

Other - Bullitt County Saddle Club, Peaceful Valley Saddle Club,  
Senior Citizens, Ministerial Association

Lebanon Junction

Business and Civic - Lions Club, PTA

Fraternal - Masons

Women's - Eastern Star, Homemakers, Woman's Club

Youth - Boy Scouts, Cub Scouts, 4-H, FFA, FTA

Other - Friendship Center

RECREATION

Local

	<u>Shepherdsville</u>	<u>Mt. Washington</u>
Public Recreation Facilities		
Supervised program -	Year round	During summer
Parks -	1	1
Playgrounds -	1	1
Swimming pools -	1	1
Golf course -	1	
Tennis courts -	2	
Baseball diamonds -	2	1
Football fields -	1	1
Skating rink -	1	
Private Recreation Facilities		
Golf courses -	1	1
Skating rink -		1
Camping grounds with swimming pool	1	
	<u>Lebanon Junction</u>	<u>Bullitt County</u>

Local

Public Recreation Facilities		
Supervised program -	During summer	
Playground -	1	
Swimming pools -	1	1 (Maryville)
Golf course -	1	
Tennis courts -	2	
Baseball diamond -	1	
Basketball court -	1	
Other -		Boat launching facilities on Salt River
Private Recreation Facilities		
Country club -		1
Tourist Attractions		
Bernheim Forest		



Area (Within 25 miles)

Abraham Lincoln Birthplace National Historic Site  
My Old Kentucky Home State Park

Proximity to Louisville provides the area with entertainment such as the Kentucky State Fair, Kentucky Derby, harness racing, Actor's Theatre, Kentucky Opera Association, Louisville Ballet, Louisville Symphony Orchestra, professional basketball, Louisville Zoological Gardens, J. B. Speed Art Museum, and Kentucky High School Sports Tournaments.

AGRICULTURE - NATURAL RESOURCES - CLIMATE

Agriculture\*

	<u>Bullitt County</u>	<u>Labor Market Area</u>
Total land area (acres)	192,000	1,229,312
Percent of area in farm land	46.7	63.0
Number of farms	771	6,171
Average size of farms (acres)	116.1	125.5
1969 value of all farm products	\$ 3,985,892	\$ 43,824,050
Value per farm	5,169	7,102
Total crop sales	997,804	14,305,914
Total livestock & livestock products	2,969,290	29,367,696
1973 agricultural production included:		
Burley tobacco (lbs.)(est. )	774,000	10,250,000
Corn for grain (bu. ) (est. )	259,000	4,865,000
Cattle and calves (number)	20,200	185,900
Hogs and pigs (number) (preliminary)	10,300	80,100
Milk production, 1972 (lbs. )	17,640,000	239,410,000

Natural Resources

Principal mineral resources	Dolomite
Other mineral resources	Limestone, sand and gravel, and clay
Acres of commercial forest land	106,000
Most abundant tree species	White oak, red oak, hickory, yellow poplar, beech, ash, hard maple, yellow pine

\*U. S. Department of Commerce, Bureau of the Census, Census of Agriculture, 1969. U. S. Department of Agriculture and Kentucky Department of Agriculture, Kentucky Agricultural Statistics, 1973.

Climate\*

Bullitt County

Temperature	
Annual mean (30-year record)	55.2 degrees
Average annual 1974	55.1 degrees
Record highest, July, 1972 (11-year record)	98.0 degrees
Record lowest, January, 1972 (11-year record)	-11.0 degrees
Normal heating degree days (30-year record)	4,729
(Heating degree day totals are the sums of negative departures of average daily temper- atures from 65 degrees F.)	
Precipitation	
Mean annual total (30-year record)	44.49 inches
Mean annual snowfall (30-year record)	15.70 inches
Total precipitation 1974	60.09 inches
Mean number days precipitation (.01 inch or more) (30-year record)	130
Average number days thunderstorms (30-year record)	47
Prevailing winds (17-year record)	South

\*U. S. Department of Commerce, Environmental Science Services  
Administration, Climatological Data, 1974. Station of record:  
Lexington, Kentucky.

## HISTORY

Bullitt County, the twentieth county formed in Kentucky, dates from 1796. It was taken from Jefferson and Nelson Counties and contains 300 square miles. The soil is generally fertile, and the land is rolling creating natural scenery both variegated and beautiful.

Bullitt County was named for Alexander Scott Bullitt, a member of the conventions which framed Kentucky's first and second constitutions in 1792 and 1799, and a member of the State Senate from Jefferson County at the time the county was established. He was chosen Speaker of the Senate when the first legislature convened in Lexington in 1792. Bullitt was Kentucky's first Lieutenant Governor, serving under Governor James Garrard.

Shepherdsville, the county seat, was incorporated in 1793 as a town in Jefferson County three years before Bullitt County was formed. The town was named for Peter Shepherd who settled there and entered the land under the Virginia Patent and Entry Act of March 28, 1781. It is one of the oldest towns in Kentucky and was formerly known as Mud Garrison. Because of the iron and other ores that existed a few feet beneath the surface and because the water contained salt, iron, and magnesia, Shepherdsville became a fortification to protect the salt makers even before the city was incorporated. Later Paroquet Springs, a part of what was formerly known as Bullitt's Licks, became a famous water resort during the nineteenth century.

In 1850, the population of Bullitt County was 6,774. The population fluxuated until 1940 when it began a steady growth to a 1970 high of 26,090. In 1900, the population of Lebanon Junction was 599. In 30 years the population had doubled to 1,267, and by 1970 the population was 1,571. In 1970 Mt. Washington had 2,020 inhabitants. Shepherdsville, the oldest city in the county, had a 1920 population of 520. After 1920 the population had a steady rise to a 1970 population of 2,769.

The first bank was established in Shepherdsville in 1804. Soon after Shepherdsville was incorporated, the firm of Quarry and Tyler located a plant on the Salt River. In 1810 the first steel bar west of the mountains was smelted here.

The three major manufacturing firms in Bullitt County are James B. Beam Distilling Company, manufacturers of whiskey and cordials, Publishers Printing Company, producers of offset lithographic printing and book publishers, and A. J. Bayer Company, manufacturers of conveyors.



**Kentucky Department of Commerce  
Capital Plaza Tower  
Frankfort, Kentucky 40601**

---

**Industrial Development Division  
(502) 564-7140**

**Community Services Division  
(502) 564-4300**

**Business Development Division  
(502) 564-4300**

**Research and Planning Division  
(502) 564-4886**

**Office of Minority Business Enterprises  
(502) 564-4270**

**Map Sales Office  
133 Holmes Street  
(502) 564-4715**

**Industrial Development Finance Authority  
(502) 564-4554**