

1973

## Industrial Resources: Caldwell County - Princeton

Kentucky Library Research Collections  
Western Kentucky University, [spcol@wku.edu](mailto:spcol@wku.edu)

Follow this and additional works at: [https://digitalcommons.wku.edu/caldwell\\_cty](https://digitalcommons.wku.edu/caldwell_cty)

 Part of the [Business Administration, Management, and Operations Commons](#), [Growth and Development Commons](#), and the [Infrastructure Commons](#)

---

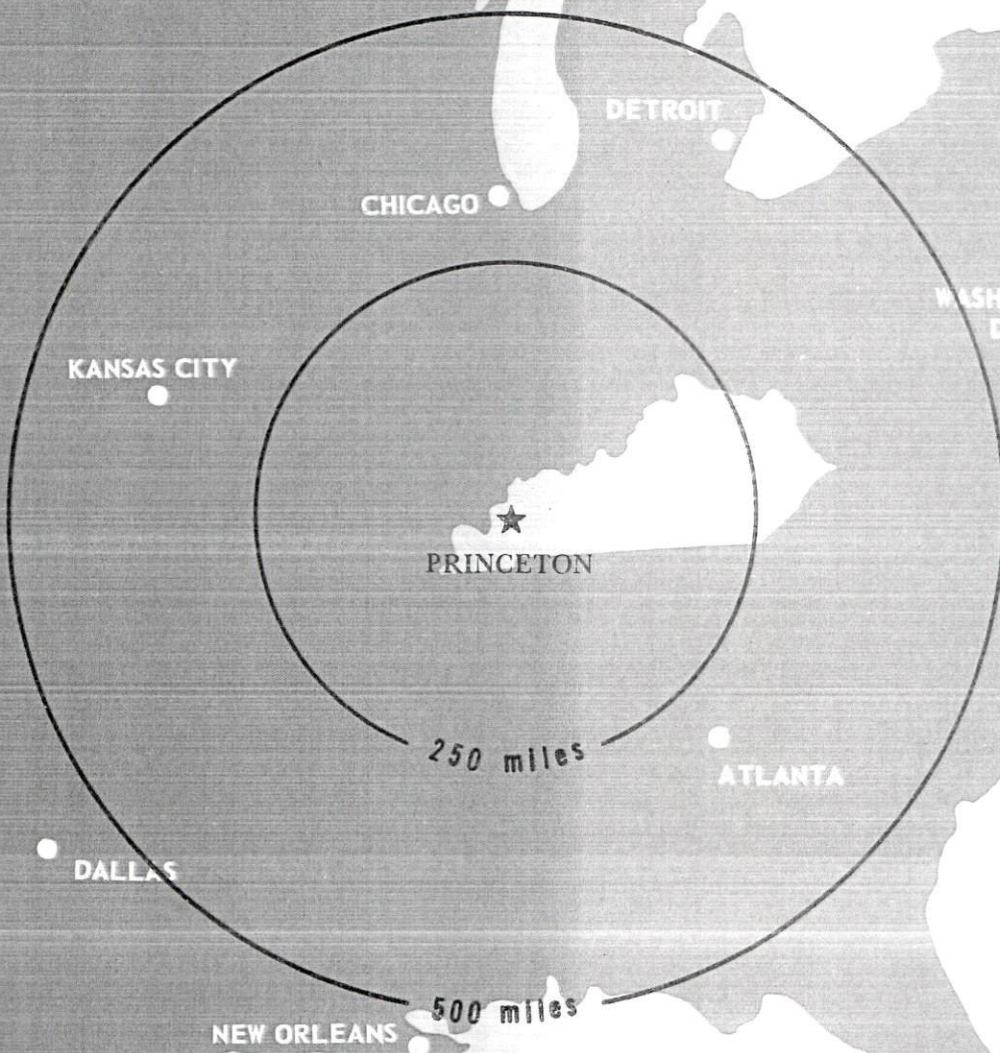
### Recommended Citation

Kentucky Library Research Collections, "Industrial Resources: Caldwell County - Princeton" (1973). *Caldwell County*. Paper 10.  
[https://digitalcommons.wku.edu/caldwell\\_cty/10](https://digitalcommons.wku.edu/caldwell_cty/10)

This Report is brought to you for free and open access by TopSCHOLAR®. It has been accepted for inclusion in Caldwell County by an authorized administrator of TopSCHOLAR®. For more information, please contact [topscholar@wku.edu](mailto:topscholar@wku.edu).

# INDUSTRIAL RESOURCES

## **PRINCETON KENTUCKY**

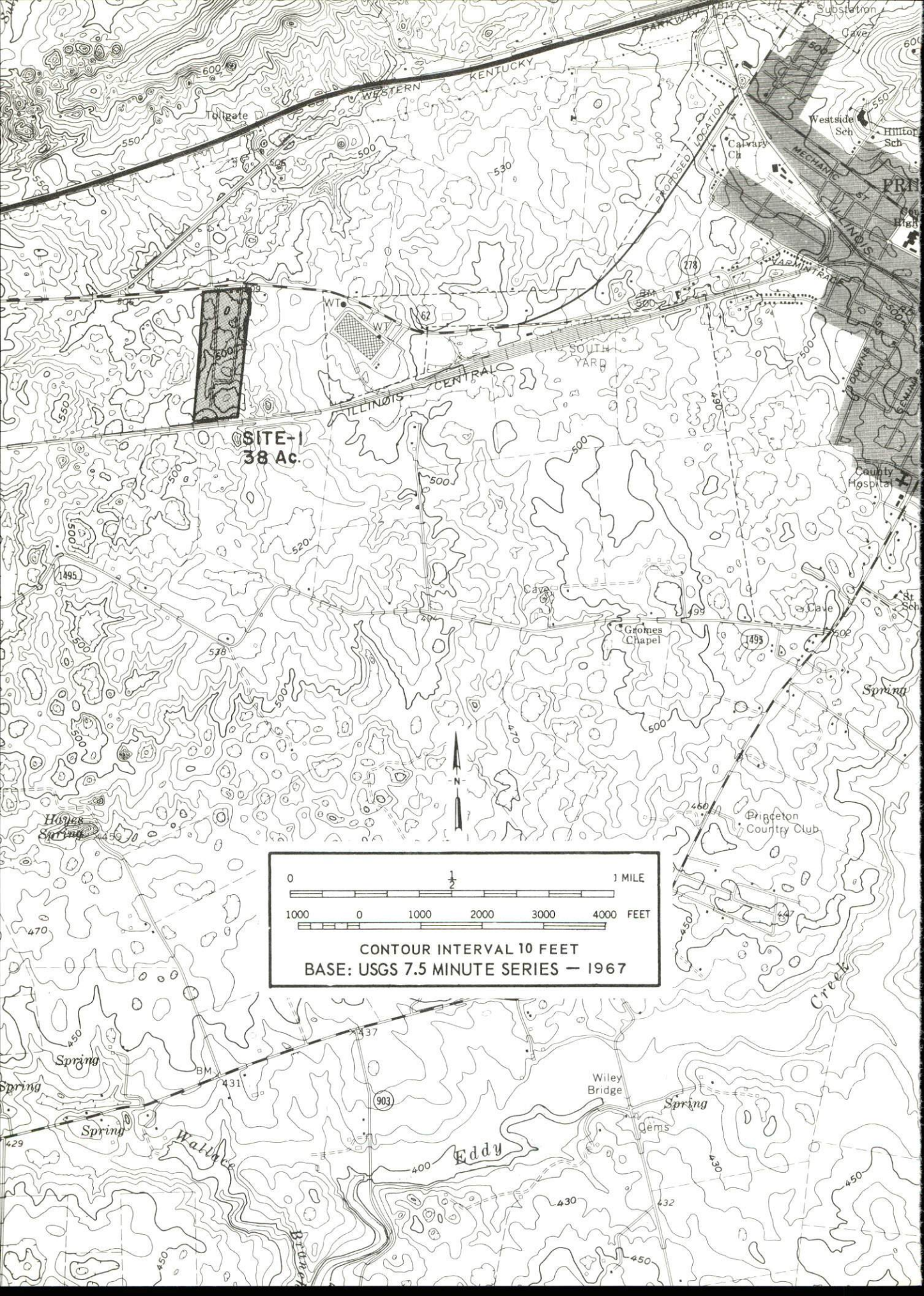


CALDWELL COUNTY, KENTUCKY

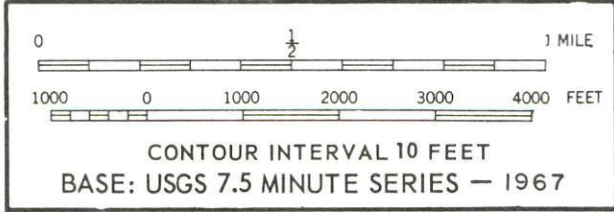
PRINCETON INDUSTRIAL SITES

1973





**SITE-1  
38 AC**







PRINCETON

SITE-2  
71 Ac.

Cedar Bluff

Railroad Lake

Creek

Goose Creek

Goose

Cedar Bluff

Western Kentucky  
Agricultural Experiment  
Substation

Dawson Cem

O'Hara Cem

Cedar Bluff  
Quarry

PRINCETON

PRINCETON

PRINCETON

PRINCETON

PRINCETON

PRINCETON

PRINCETON

PRINCETON

PRINCETON

Radio Tower

Radio Tower  
(WRKY)

Water Tank

Center

PRINCETON

PRINCETON

PRINCETON

PRINCETON

PRINCETON

PRINCETON

PRINCETON

PRINCETON

PRINCETON

PRINCETON

PRINCETON

PRINCETON

PRINCETON

PRINCETON

PRINCETON

PRINCETON

PRINCETON

PRINCETON

PRINCETON

PRINCETON

PRINCETON

PRINCETON

PRINCETON

PRINCETON

PRINCETON

PRINCETON

PRINCETON

PRINCETON

PRINCETON

PRINCETON

PRINCETON

PRINCETON

PRINCETON

PRINCETON

PRINCETON

PRINCETON

PRINCETON

PRINCETON

PRINCETON

PRINCETON

PRINCETON

PRINCETON

PRINCETON

PRINCETON



## PRINCETON INDUSTRIAL SITES

For more information about the following sites, contact Mr. John B. Morgan, Courthouse, Princeton, Kentucky; or the Kentucky Department of Commerce, Capital Plaza Office Tower, Frankfort, Kentucky.

SITE #1: ACREAGE: 38  
LOCATION: Adjoins west city limits  
HIGHWAY ACCESS: U. S. 62 borders site on north  
RAILROADS: Illinois Central Railroad along southern boundary  
of site  
WATER: Princeton Municipal Water Works  
SIZE LINE: 10-inch line adjoins east boundary of site  
GAS: Western Kentucky Gas Company  
SIZE MAIN: 4-inch main approximately 7,200 feet east of site  
ELECTRICITY: Princeton Electric Plant Board  
SEWERAGE: Princeton Municipal Water Works  
SIZE LINE: 10-inch line approximately 480 feet east of site  
OWNERSHIP: Princeton Industrial Foundation

SITE #2: ACREAGE: 71  
LOCATION: 2 1/2 miles southeast of Princeton city limits  
HIGHWAY ACCESS: Kentucky Highway 128  
RAILROADS: Illinois Central Railroad borders site on west  
WATER: Princeton Municipal Water Works  
SIZE LINE: 10-inch line on site  
GAS: Western Kentucky Gas Company  
SIZE MAIN: 6-inch main on site  
ELECTRICITY: Pennyrile RECC  
SEWERAGE: Package plant necessary  
OWNERSHIP: Illinois Central Railroad



INDUSTRIAL RESOURCES  
PRINCETON, KENTUCKY

Prepared by  
The Kentucky Department of Commerce  
in cooperation with  
The Princeton Chamber of Commerce  
and  
The Princeton Industrial Foundation

1973

The copy has been prepared by the Kentucky Department of Commerce, Division of Research and Planning, and the cost of printing paid from state funds.



## TABLE OF CONTENTS

<u>Chapter</u>	<u>Page</u>
INDUSTRIAL SITES . . . . .	i
PRINCETON, KENTUCKY - A RESOURCE PROFILE . . . . .	1
THE LABOR MARKET. . . . .	4
Population Trends . . . . .	4
General Employment Characteristics, 1971 . . . . .	4
Manufacturing Employment Trends by Industry . . . . .	4
Princeton Manufacturing Firms, Their Products and Employment . . . . .	5
Wages. . . . .	8
Labor Organizations . . . . .	8
Current and Future Labor Supply. . . . .	8
Total Personal Income . . . . .	8
Per Capita Personal Income. . . . .	8
TRANSPORTATION . . . . .	9
Rail. . . . .	9
Truck Service . . . . .	9
Air . . . . .	10
Bus . . . . .	10
Taxi . . . . .	10
Rental Services. . . . .	10
POWER AND FUEL . . . . .	11
Electricity. . . . .	11
Natural Gas . . . . .	11
Other Fuels . . . . .	11
WATER AND SEWERAGE . . . . .	12
Water . . . . .	12
Sewerage . . . . .	12
LOCAL GOVERNMENT . . . . .	13
City. . . . .	13
County . . . . .	13

<u>Chapter</u>	<u>Page</u>
Assessed Value of Property - 1972 . . . . .	13
Local General Property Tax Rates Per \$100 of Assessed Valuation - 1972 . . . . .	13
Utilities Gross Receipts Tax for Schools . . . . .	13
Planning and Zoning. . . . .	14
Safety . . . . .	14
Police . . . . .	14
Fire . . . . .	14
Rescue Service . . . . .	14
Sanitation . . . . .	14
 EDUCATION . . . . .	 15
Public Schools . . . . .	15
Parochial School . . . . .	15
Vocational Schools . . . . .	15
Colleges and Universities . . . . .	17
 HEALTH . . . . .	 18
Hospitals. . . . .	18
Nursing Homes . . . . .	18
Public Health. . . . .	18
 OTHER LOCAL FACILITIES . . . . .	 19
Communications . . . . .	19
Library Services . . . . .	19
Religious Institutions . . . . .	19
Financial Institutions . . . . .	20
Hotels and Motels. . . . .	20
Clubs and Organizations . . . . .	20
 RECREATION. . . . .	 23
Local . . . . .	23
Area . . . . .	23
 AGRICULTURE - NATURAL RESOURCES - CLIMATE . . . . .	 24
Agriculture . . . . .	24
Natural Resources . . . . .	24
Climate . . . . .	24
 HISTORY . . . . .	 25

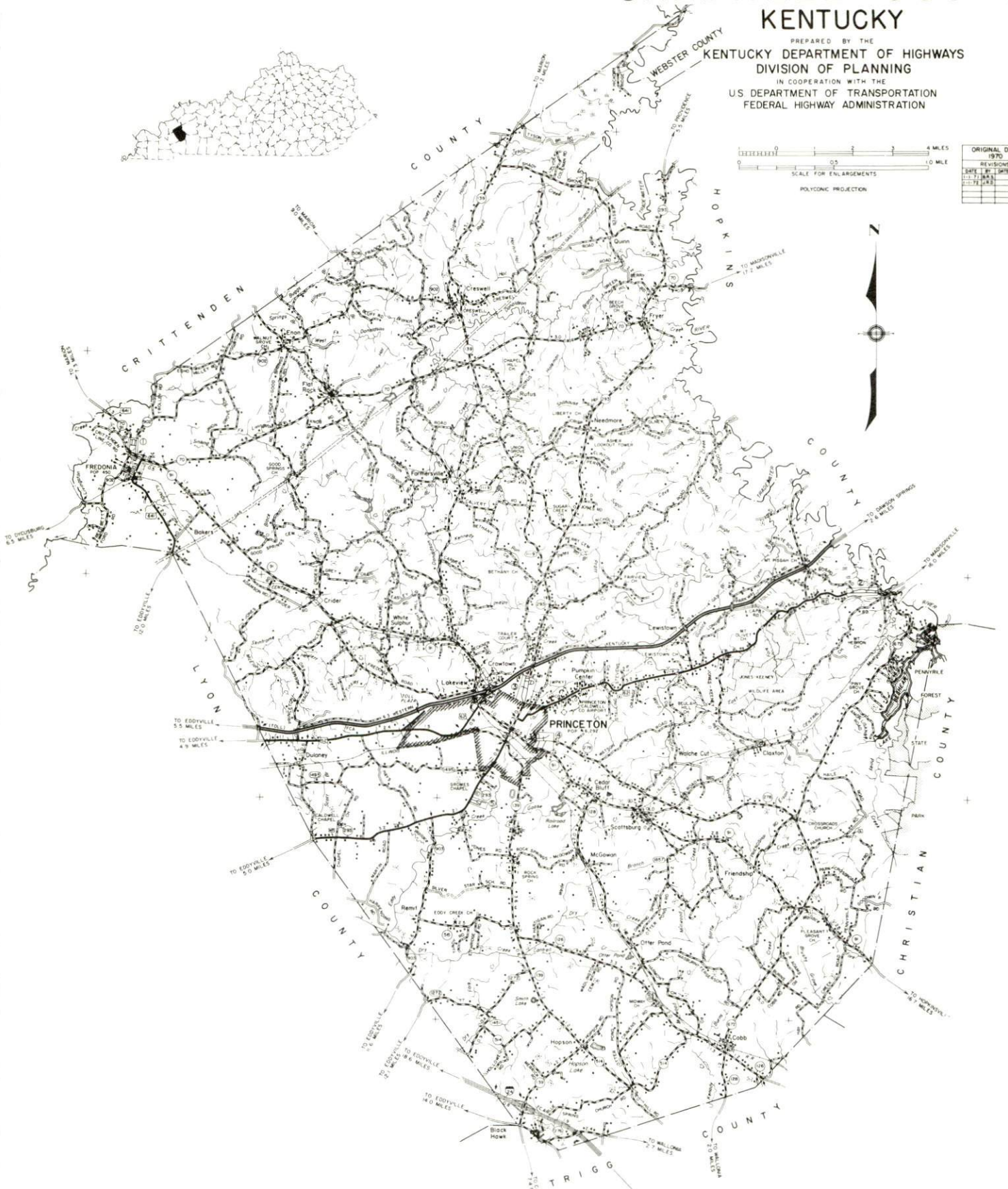


# GENERAL HIGHWAY MAP CALDWELL COUNTY KENTUCKY

PREPARED BY THE  
KENTUCKY DEPARTMENT OF HIGHWAYS  
DIVISION OF PLANNING  
IN COOPERATION WITH THE  
US DEPARTMENT OF TRANSPORTATION  
FEDERAL HIGHWAY ADMINISTRATION



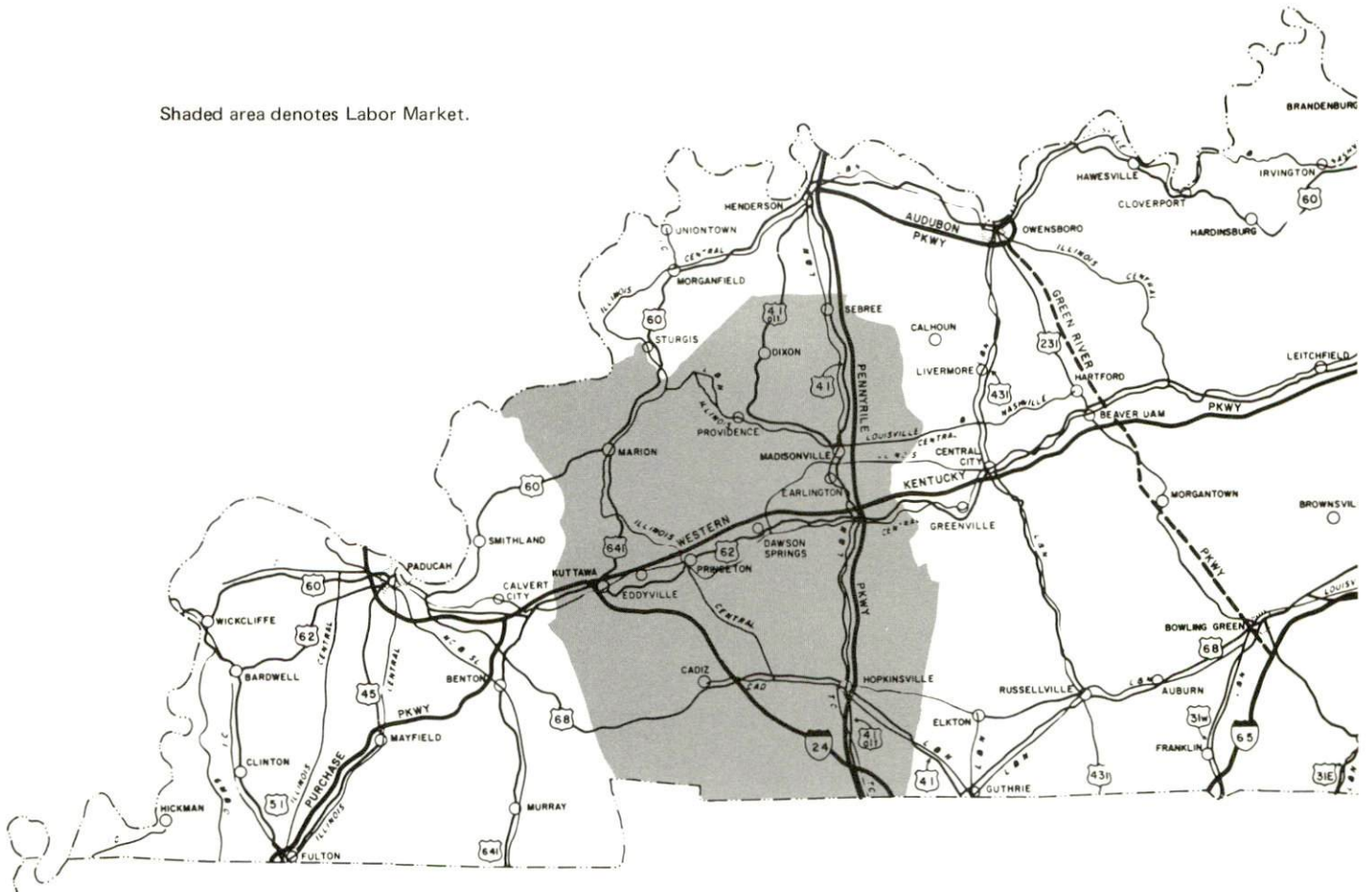
ORIGINAL DATA			
1970			
DATE	BY	SCALE	BY
11-7-70	JKS	1:50,000	JKS
11-7-70	JKS	1:50,000	JKS
11-7-70	JKS	1:50,000	JKS



# PRINCETON LABOR MARKET AREA



Shaded area denotes Labor Market.





## PRINCETON, KENTUCKY - A RESOURCE PROFILE

Princeton, the county seat of Caldwell County, is located in the Pennyryle section of western Kentucky. It is situated on the Western Kentucky Parkway, 168 miles southwest of Louisville and 44 miles east of Paducah. The 1970 population of Princeton was 6,292.

Caldwell County, which covers a land area of 357 square miles, had a 1970 population of 13,179.

### The Economic Framework

Total employment in Caldwell County averaged 5,470 in 1971 with manufacturing providing 1,480 jobs, agriculture 690, government 520, and trade and services 1,115. Manufacturing employment has increased approximately 167 percent, or 1,175 new jobs since 1961. Major products are radios, phonographs, television sets, hair dryers, electric scissors, radio components, steel welding fittings, and apparel.

Per capita income in the county in 1970 was \$3,071. Between 1960 and 1970 per capita personal income increased by almost 200 percent in Caldwell County.

In the Princeton labor market area, which includes Caldwell and its six surrounding counties, total employment in 1971 averaged 49,950. Manufacturing provided 8,670 of these jobs, agriculture 5,490, government 8,910, and trades and services 11,230. Area industrial employment has increased nearly 125 percent since 1961 with sharpest gains in the metal products, electrical equipment, and apparel industries.

Despite important industrial gains in recent years, the area still has a deficit of 4,965 manufacturing jobs when measured against the national industrial employment-population ratio. This indicates an area where the potential for additional manufacturing production is excellent.

### Resources for Growth

1. There is a current estimated labor supply of 10,995 men and 10,800 women in the labor market area. In addition 6,935 young men and 6,520 young women will become 18 years of age by 1978 and potentially available for work.

2. Rail service is provided by the Illinois Central Gulf Railroad. Princeton is located on the Western Kentucky Parkway, which provides excellent access to Kentucky's interstate and parkway systems. Commercial air service is available at Paducah, 44 miles away. Facilities for small aircraft are available at Princeton. Twelve truck lines serve the city.



3. Electricity is available in large quantity from the Kentucky Utilities Company, the Princeton Electric Plant Board, Pennyrile RECC and Henderson-Union RECC. The Western Kentucky Gas Company serves Princeton. Propane and butane are available from two distributors, and distillate fuel oil is available from four distributors. The raw water supply is more than adequate for continued growth.

4. Princeton has two available industrial sites.

5. There are four community colleges, one university, and two senior colleges within a 75-mile radius of Princeton. The nearest state vocational-technical school is located at Madisonville, 27 miles from Princeton.

#### Community Programs for Improvement

Six new businesses have recently been opened in Princeton, and two businesses have recently remodeled their facilities.

Princeton and Caldwell County are now being served by a new City Hall building, the new Caldwell County High School, and a new county jail.

A new bank has opened.

The Federal-Mogul Corporation recently opened its plant for production.

A new subdivision is being developed.

#### Recreation, Entertainment and Livability

Recreational facilities in the Princeton area are excellent as well as plentiful. There are four state resort parks, Kenlake State Resort Park near Hardin, Kentucky Dam Village State Resort Park near Gilbertsville, Pennyrile Forest State Resort Park near Dawson Springs, and Lake Barkley State Resort Park near Cadiz, within 50 miles of Princeton. Facilities and recreational activities at these parks include a lodge, cottages, camping facilities, fishing, boating and boat rentals, horseback riding, hiking trails, swimming pool, beach, golf course, tennis, shuffleboard, playground, picnic area and supervised recreation.

In addition, there are three other state parks within 70 miles of Princeton. Columbus-Belmont Battlefield State Park, John James Audubon State Park at Henderson, and Lake Malone State Park.

The Land Between the Lakes National Recreation Area between Lake Barkley and Kentucky Lake is one of the largest outdoor recreation areas in the nation. Developed by the Tennessee Valley Authority, it offers excellent opportunities for fishing, hunting, camping, boating, hiking and nature study.

Two annual thoroughbred racing meets are held at Henderson, 68 miles from Princeton.

Murray State University, 48 miles away, offers a full schedule of athletic, educational, and cultural events.

## THE LABOR MARKET

### POPULATION TRENDS <sup>1/</sup>

Area	Population			Percent Change	
	1970	1960	1950	1960-70	1950-60
Princeton	6,292	5,618	5,388	+12.0	+ 4.3
Labor Market Area	143,527	146,121	137,282	- 1.8	+ 6.4
Caldwell County	13,179	13,073	13,199	+ 0.8	- 1.0
Christian County	56,224	56,904	42,359	- 1.2	+34.3
Crittenden County	8,493	8,648	10,818	- 1.8	-20.1
Hopkins County	38,167	38,458	38,815	- 0.8	- 0.9
Lyon County	5,562	5,924	6,853	- 6.1	-13.6
Trigg County	8,620	8,870	9,683	- 2.8	- 8.4
Webster County	13,282	14,244	15,555	- 6.8	- 8.4

### GENERAL EMPLOYMENT CHARACTERISTICS, 1971 <sup>2/</sup>

Major Employment Group	Employment	
	Caldwell County	Labor Market Area
TOTAL	5,470	49,950
Agricultural	690	5,490
Nonagricultural	4,780	44,460
Manufacturing	1,480	8,670
Government	520	8,910
Trade and Services	1,115	11,233

### MANUFACTURING EMPLOYMENT TRENDS BY INDUSTRY SEPTEMBER 1971 AND 1961 <sup>3/</sup>

Industry	Caldwell County			Labor Market Area		
	1971	1961	%Change	1971	1961	%Change
TOTAL	1,878	704	+166.8	9,047	4,030	+ 124.5
Food & Kindred Products	33	43	- 23.3	406	515	- 21.2
Tobacco	0	0	0	14	24	- 41.7
Apparel, Textiles, Leather	515	610	- 15.6	2,420	1,774	+ 36.4
Lumber, Furniture	35	26	+ 34.6	357	472	- 24.4
Printing & Publishing, Paper	10	12	- 16.7	366	288	+ 27.1
Chemicals, Petroleum & Coal, Rubber	8	6	+ 33.3	748	99	+ 655.6
Stone, Clay & Glass	0	7	-100.0	81	107	- 24.3
Primary Metals	0	0	0	460	22	+1990.9
Machinery, Metal Products, Equipment	1,277	0	--	3,997	726	+ 450.6
Other	0	0	0	198	3	+6500.0



PRINCETON MANUFACTURING FIRMS  
THEIR PRODUCTS AND EMPLOYMENT <sup>4/</sup>

<u>Firm</u>	<u>Product</u>	<u>Employment</u>		
		<u>Total</u>	<u>Male</u>	<u>Female</u>
O. Ames Company	Parts for garden tools	15		
Arvin Industries	Radios, phonographs, TV's, electric scissors, hair dryers, radio components	1,100	200	900
Bryant's Pine Lumber Company, Inc.	Lumber	18		
Caldwell County Times, Inc.	Newspaper, commercial job printing	11	7	4
Cedar Bluff Stone Co.	Agricultural lime, concrete	42	40	2
Cumberland Mfg. Com- pany, Inc.	Blouses, dungarees, ladies' shorts and slacks	85	13	72
Federal-Mogul Corporation	Powdered metals and consolidations	50		
Grinnell Corporation	Steel welding fittings	345	325	20
Guess Trucking Company	Ready mixed concrete	35	34	1
Highway Asphalt Materials, Inc.	Asphalt paving materials	6		
O. P. Link Handle Com- pany, Inc.	Hickory blanks	8		
Long Silo Company	Concrete silo staves, feeding equipment	30	30	0
Princeton Hosiery Mills	Infants terrycloth garments, children's hosiery	450	120	330
The Princeton Leader	Newspaper, job printing	2	1	1
Salyers Brothers Lumber Company	Lumber crossties	7	7	0
Southern States Cooperative	Fertilizer, feed	6	5	1
Tri-State Stave Company	Barrel staves and headings	8	8	0

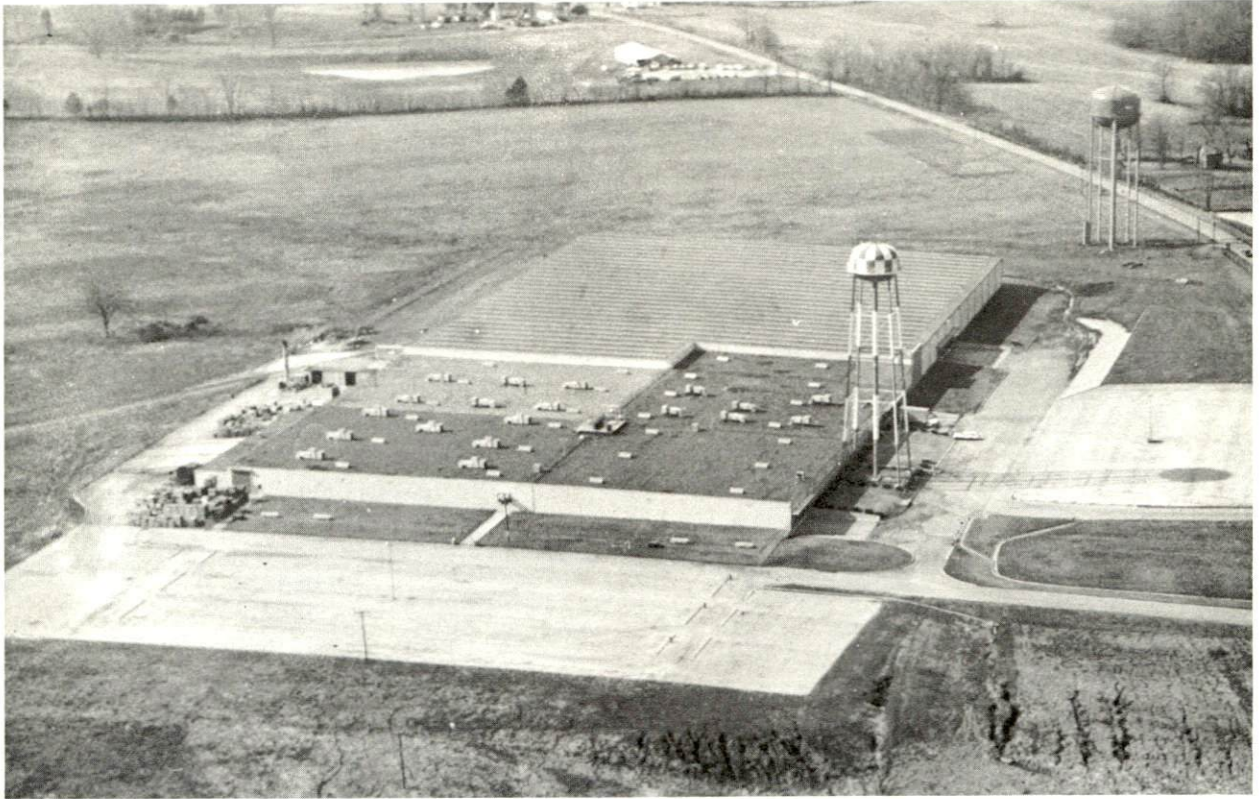


Federal Mogul Corporation



Grinnell Corporation





Arvin Industries



Princeton Hosiery Mills



## WAGES

Wage information will be furnished upon request by the Kentucky Department of Commerce, Division of Research and Planning.

### LABOR ORGANIZATIONS

<u>Union</u>	<u>Representing manufacturing workers at:</u>
International Association of Machinists	Arvin Industries
United Steel Workers	Grinnell Corporation
Amalgamated Clothing Workers	Cumberland Manufacturing Company, Inc.

### CURRENT AND FUTURE LABOR SUPPLY - PRINCETON LABOR MARKET AREA

<u>Area</u>	<u>Current Labor Supply, 1972<sup>5/</sup></u>			<u>Future Labor Supply by 1978<sup>6/</sup></u> <u>(Becoming 18 Years of Age)</u>		
	<u>Total</u>	<u>Male</u>	<u>Female</u>	<u>Total</u>	<u>Male</u>	<u>Female</u>
Labor Market Area	21,795	10,996	10,799	13,455	6,934	6,521
Caldwell	2,561	1,220	1,341	1,181	594	587
Christian	6,912	3,546	3,366	5,162	2,636	2,526
Crittenden	1,415	700	715	791	430	361
Hopkins	5,258	2,234	3,024	3,751	1,979	1,772
Lyon	1,588	1,304	284	416	211	205
Trigg	1,352	633	719	852	436	416
Webster	2,709	1,359	1,350	1,302	648	654

### TOTAL PERSONAL INCOME <sup>7/</sup>

<u>Area</u>	<u>1970</u>	<u>1960</u>	<u>% Change</u>
Caldwell County	\$ 38,386,000	\$ 13,405,000	+186.4
Labor Market Area	470,717,000	241,964,000	+ 94.5
Kentucky	9,719,647,000	4,779,695,000	+103.4

### PER CAPITA PERSONAL INCOME <sup>8/</sup>

<u>Area</u>	<u>1970 <sup>*</sup></u>	<u>1960</u>	<u>% Change</u>
Caldwell County	\$3,071	\$1,025	+199.6
Labor Market Area			
Range	\$3,868 - 1,751	\$2,073 - 755	N. A.
Kentucky	3,019	1,573	+ 91.9

<sup>\*</sup>Unadjusted for commuting.

## TRANSPORTATION

### Rail

Line serving Princeton - Illinois Central Gulf Railroad  
Services - Siding space, switching facilities, freight

#### RAILWAY TRANSIT TIME FROM PRINCETON, KENTUCKY, TO: 9/

City	No. of Days		City	No. of Days	
	CL			CL	
Atlanta, Ga.	3		Los Angeles, Calif.	5	
Birmingham, Ala.	2		Louisville, Ky.	1	
Chicago, Ill.	2		Nashville, Tenn.	1	
Cincinnati, Ohio	2		New Orleans, La.	2	
Cleveland, Ohio	4		New York, N. Y.	4	
Detroit, Mich.	3		Pittsburgh, Pa.	3	
Knoxville, Tenn.	2		St. Louis, Mo.	2	

### Truck Service

#### Company

Harper Truck Service, Inc.  
A. Ligon Truck Line, Inc.  
McLean Trucking Company  
Schroders Express, Inc.  
Skaggs Transfer, Inc.  
Tennessee Cartage Company, Inc.  
United Trucking Service, Inc.  
Wilson Brothers\*  
Marvin Hayes Lines, Inc.  
Kentucky T.O.F.C. Delivery  
Service\*  
Guess Trucking and Construction  
Company, Inc.\*  
United Parcel Service

#### Home Office

Paducah, Kentucky  
Lebanon, Kentucky  
Winston-Salem, North Carolina  
Cincinnati, Ohio  
Louisville, Kentucky  
Nashville, Tennessee  
Detroit, Michigan  
Princeton, Kentucky  
Clarksville, Tennessee  
  
Princeton, Kentucky  
  
Princeton, Kentucky  
Louisville, Kentucky

\*Terminals in Princeton.

HIGHWAY MILES AND TRUCK TRANSIT TIME IN DAYS FROM  
PRINCETON, KENTUCKY, TO SELECTED MARKET CENTERS

City	Highway Miles	Delivery		City	Highway Miles	Delivery	
		Time <sup>10/</sup> TL	TL			Time TL	TL
Atlanta, Ga.	575	2		Los Angeles, Calif.	2,275	3	
Birmingham, Ala.	534	2		Louisville, Ky.	168	1	
Chicago, Ill.	469	1		Nashville, Tenn.	348	1	
Cincinnati, Ohio	290	1		New Orleans, La.	878	2	
Cleveland, Ohio	522	2		New York, N. Y.	937	2	
Detroit, Mich.	543	1		Pittsburgh, Pa.	562	2	
Knoxville, Tenn.	281	2		St. Louis, Mo.	432	1	

Air

	<u>Local</u>	<u>Nearest Commercial</u>
	Princeton-Caldwell County Airport	Barkley Field
Location:	1 mile northeast of Princeton	Paducah, 44 miles from Princeton
Runways:	1 paved	2 paved
Length:	3,000 feet	6,500 feet, 4,000 feet
Traffic Control:	Wind tee	Wind tee
Lighting:		Beacon, boundary, obstruction lights, runway lights and run- way end identification lights
Services:		80 and 100 octane, jet fuel, Delta and Ozark airlines, taxi, limousine, U-Drive-It, storage, major A & E repairs

Bus - Continental Trailways

Taxi - Two companies provide 24-hour service

Rental Services - Car rentals



## POWER AND FUEL

### Electricity

Company serving Princeton - Princeton Electric Plant Board

Source of power - Tennessee Valley Authority

Total generating capacity - 19,400,000 KW

Industrial rates furnished by - Princeton Electric Plant Board,  
Princeton, Kentucky

Company serving Caldwell County - Pennyrile RECC

Source of power - Tennessee Valley Authority

Total generating capacity - 19,400,000 KW

Industrial rates furnished by - Pennyrile RECC, Hopkinsville, Kentucky

Company serving Caldwell County - Henderson-Union RECC

Source of power - Big Rivers RECC

Total generating capacity - 400,000 KW

Industrial rates furnished by - Henderson-Union RECC, Henderson, Kentucky

Company serving Caldwell County - Kentucky Utilities Company

Source of power - Kentucky Utilities Company

Total generating capacity - 1,215,000 KW

Industrial rates furnished by - Kentucky Utilities Company, Morganfield,  
Kentucky

### Natural Gas

Company serving Princeton - Western Kentucky Gas Company

Source of supply - Texas Gas Transmission Corporation

Size of transmission mains - 10 inches (supplier); 4 and 6 inches (distributor)

Distribution mains - 2, 3, 4 and 6 inches

Btu content - 1,000 per cubic foot

Specific gravity - .60

Rates - Contact Western Kentucky Gas Company, Owensboro, Kentucky

### Other Fuels

Propane and butane - Fortner Gas Company, Larry Osting

Fuel Oils - Distillate fuel oil distributors - Gulf, Standard, Mays Oil  
Company, Ashland Oil

Residual fuel oil - Arrangements must be made with the refinery.

Low sulphur content coal - Available in Kentucky

## WATER AND SEWERAGE

### Water

Company serving Princeton - Princeton Water Department  
Source - Lake Barkley  
Treatment plant capacity - 2,000,000 gpd  
Average daily consumption - 781,000 gallons  
Peak daily consumption - 1,311,000 gallons  
Type treatment - Coagulation, sedimentation, filtration and chlorination  
Storage capacity - 900,000 gallons  
Size mains - 4, 6, 8, 10 and 16 inches  
Average pressure - 58 psi  
Average temperature - 59 degrees F.

### MONTHLY WATER RATES FOR WHOLESALE AND INDUSTRIAL CONSUMERS

---

First	150 cu. ft.	\$2.25 (Minimum)
Next	450 cu. ft.	.65 per 100 cu. ft.
Next	500 cu. ft.	.55 per 100 cu. ft.
Next	2,000 cu. ft.	.45 per 100 cu. ft.
Next	6,900 cu. ft.	.40 per 100 cu. ft.
Over	10,000 cu. ft.	.35 per 100 cu. ft.

Surface water sources - Tradewater River  
Average discharge - Tradewater River at Olney, 318 cfs  
Expected ground water yield - From 500 gpm in center of county grading outward to 5 to 50 gpm

### Sewerage

Company serving Princeton - Princeton Water Department  
Design capacity - 1,000,000 gpd  
Average daily flow - 511,530 gallons  
Treatment - Primary and secondary  
Type treatment - Aeration and drying beds  
Treated effluent discharged into - Eddy Creek and then into Lake Barkley  
Size of sanitary mains - 8, 10, 12 and 15 inches  
Size of storm mains - 24 and 30 inches  
Rates - 50 percent of monthly water rates



## LOCAL GOVERNMENT

### City

Structure - Mayor - 4-year term; 6 councilmen - 2-year terms  
 Budget 1971-72 - General Fund \$294,460; Water and Sewer Fund \$299,700  
 Fees and licenses - Occupational license one percent of gross income

### County

Structure - County Judge - 4-year term; 6 magistrates - 4-year terms  
 Budget 1971-72 - General Fund \$111,263; Road Fund \$48,400

### Assessed Value of Property, 1972

<u>Classes of Property*</u>	<u>Princeton</u>	<u>Caldwell County</u>
Real Estate	\$18,451,000	\$58,421,861
Tangibles	9,971,555	17,518,279
Public Service	239,000	13,859,404

### Local General Property Tax Rates Per \$100 of Assessed Valuation, 1972 <sup>11/</sup>

<u>Taxing Unit**</u>	<u>Princeton</u>	<u>Caldwell County</u>
State	\$ .015	\$ .015
County	.191	.191
School	.405	.405
City	.150	
Total	\$ .761	\$ .611

### Utilities Gross Receipts Tax for Schools

Caldwell County levies a 3 percent tax on utilities receipts for schools. This tax is paid by all consumers of utilities. Exempted are receipts from utilities services that are resold and the receipts from the sale of energy or energy producing fuels that exceed 3 percent of the cost of production in manufacturing, processing, mining or refining.

\*Property assessed at 100 percent of fair value.

\*\*Manufacturing machinery, raw materials inventories and goods in process inventories are not subject to local tax. State rate is only \$.15 per \$100.

## Planning and Zoning

Joint agency - Princeton-Caldwell County Planning Commission  
Zoning enforced - Zoning ordinance under consideration  
Subdivision regulations enforced - Up to 5 miles beyond city limits  
Local codes enforced - Housing, Building  
Mandatory state codes enforced - Plumbing, National Fire Protection Association Code, National Building Code (for major buildings and residential construction containing more than 12 bedrooms per building)

## Safety

<u>Police</u>	<u>Princeton</u>	<u>Caldwell County</u>
Total staff	11	3
Radio-patrol cars	3	2

### Fire

American Insurance Association Fire Rating	7
Volunteers	21
Equipment:	
750 gpm pumper	1
500 gpm pumpers	2
utility truck	2
ambulance	1

### Rescue Service

Caldwell County Radio-Rescue Squad  
Number of volunteers - 24  
Equipment - Ambulance, generator, short-wave radio, emergency van, boat and four power units  
Personnel training - First aid, radiological monitoring, fireman's training

## Sanitation

	<u>Princeton</u>
Type service	Municipal
Fee charged:	
residential	\$1.25 per month
business	\$10.50 per month
Collection frequency:	
residential	Once weekly
business	1 to 3 times per week
Trash pickup	Every other month
Disposal method	Sanitary landfill



## EDUCATION

### Public Schools

#### Caldwell County

Total Enrollment	2,670
Elementary	1,410
High School	1,260
Student-Teacher Ratio	21-1
Elementary	22-1
High School	19-1
Percent High School Graduates to College	41.6
Current Expenditures Per Pupil	\$654.91
Bonded Indebtedness, June 30, 1972	\$1,945,000

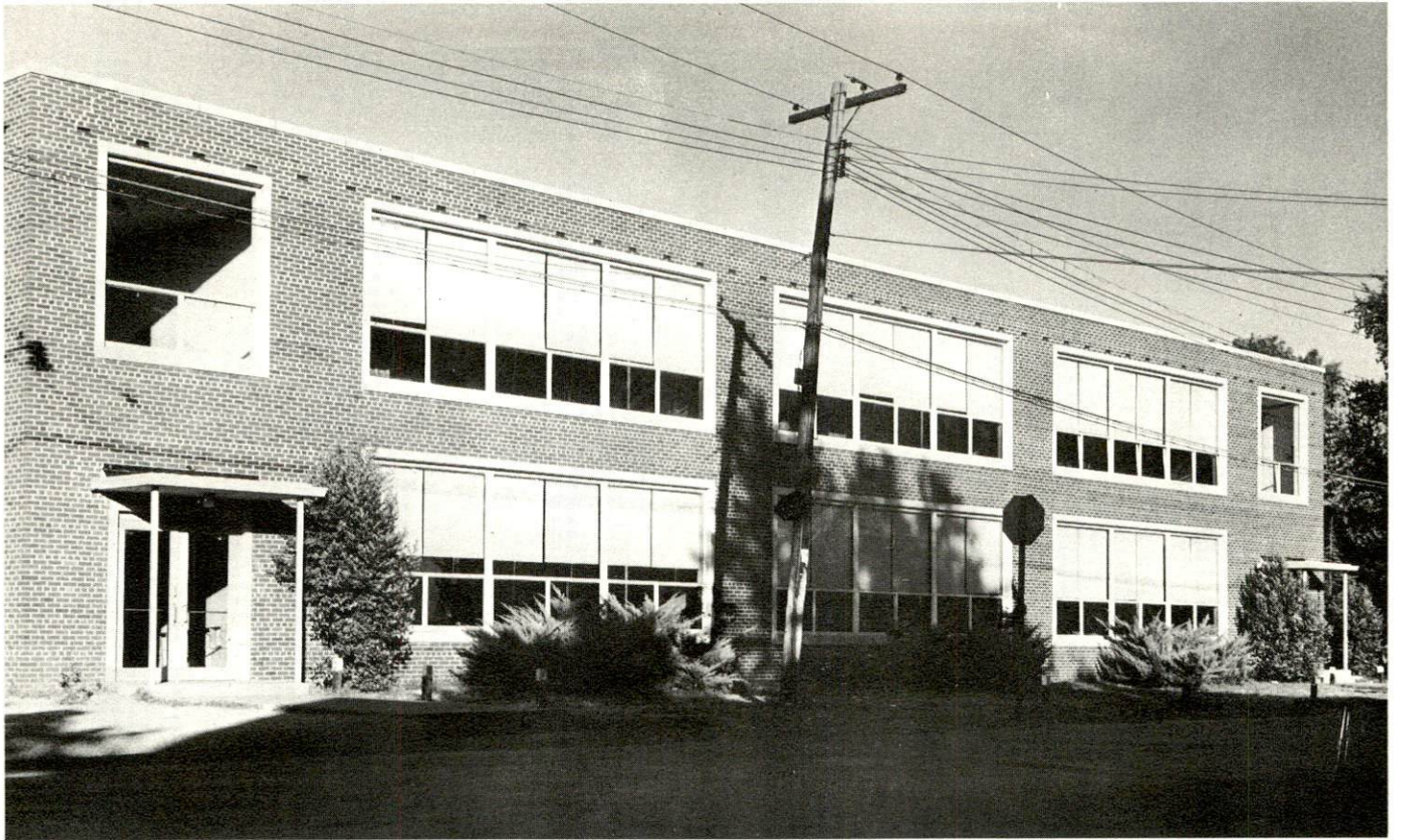
### Parochial School

Total Enrollment	90
Elementary	90
Student-Teacher Ratio	30-1
Elementary	30-1

### Vocational Schools

#### Nearest State Vocational-Technical School

Location	Madisonville State Vocational-Technical School
Miles Distant	Madisonville
Curriculum	27 miles
	Certified Lab Assistant
	Medical Assistant, Medical Secretary
	Practical Nursing
	Radiologic Technology
	Surgical Technician
	Learning Laboratory
	Electronics (Communications)
	Auto Body Repair, Auto Mechanics
	Carpentry, Drafting
	Electricity
	Machine Shop
	Mine Maintenance



Caldwell County Junior High



West Side Elementary School



Colleges and Universities

<u>Name</u>	<u>Area - Within 75 miles</u>		<u>Highest Degree Conferred</u>
	<u>Location</u>	<u>Enrollment</u>	
Murray State University	Murray	7,071	Masters
Kentucky Wesleyan	Owensboro	854	Baccalaureate
Brescia College	Owensboro	957	Baccalaureate
Madisonville Community College	Madisonville	359	Associate
Hopkinsville Community College	Hopkinsville	540	Associate
Paducah Community College	Paducah	1,228	Associate
Henderson Community College	Henderson	594	Associate

## HEALTH

### Hospitals

<u>General Hospital</u>	<u>Location</u>	<u>Beds</u>
Caldwell County War Memorial Hospital	Princeton	59

General hospital facilities - 2 operating rooms, clinical laboratory, emergency room, X-ray, obstetrical section, nursery, outpatient facilities, recovery room, intensive care room

Medical staff - 5 doctors, 2 courtesy doctors, 8 consulting staff doctors, 12 registered nurses, 16 graduate licensed practical nurses

Other - Princeton Mental Health Clinic

Staff - Psychiatric nurse (part-time), psychiatrist (part-time), psychologist, social worker, vocational rehabilitation counselor (part-time), receptionist

### Nursing Homes

	<u>Number</u>	<u>Beds</u>
Extended care homes	1	27
Personal care homes	5	230

### Public Health

Facility - Caldwell County Health Department

Staff - Registered nurse, administrative assistant, clerk

Budget 1971-72 - \$34,358



## OTHER LOCAL FACILITIES

### Communications

Telephone - South Central Bell Telephone Company  
Services - Standard

Telegraph - Western Union  
Services - Delivery and phone

Postal - U. S. Post Office  
Class - First  
Mail received - Once daily  
Mail dispatched - Once daily

Newspapers - Princeton Leader                      Caldwell County Times  
Weekly and circulation - 2,500                      4,300  
Other papers received from - Louisville, Paducah and Hopkinsville,  
Kentucky; Evansville, Indiana

Radio - WPKY  
Stations received from - Paducah, Hopkinsville, Henderson, Central City  
and Cadiz, Kentucky; Nashville and Clarksville, Tennessee

Television - Cable Service  
Reception from - Paducah and Bowling Green, Kentucky; Nashville,  
Tennessee; Cape Girardeau, Missouri; Evansville, Indiana; and  
Harrisburg, Illinois  
Kentucky Educational Television - Channel 35, Madisonville transmitter

### Library Services

Public library - George Coon Memorial Library  
Size collection - 31,809 volumes  
Circulation, 1971-72 - 107,871  
Services - Story hour, films, microfilm strips, newspapers, magazines,  
audio-visual equipment, phonograph records, conference room, art  
exhibits, reading club, inter-library loan service

### Religious Institutions

Number of churches - 19  
Denominations - Baptist, Catholic, Christian, Church of Christ,  
Cumberland Presbyterian, Presbyterian U. S. A., Gospel Temple,  
Holiness, Methodist

Nearest synogogue - Paducah, 44 miles away  
Congregation - Temple Israel (reform)

Financial Institutions

<u>Bank</u>	<u>Statement as of June 30, 1972</u>	
	<u>Assets</u>	<u>Deposits</u>
Farmers Bank and Trust Company	\$16,543,614	\$15,014,222
First Bank and Trust Company	20,263,196	18,271,591
<u>Savings and Loan Associations</u>	<u>Assets</u>	<u>Shared Accounts</u>
Princeton Federal Savings and Loan Association	\$3,064,527	\$2,709,692

Hotels and Motels

Total number - 3  
Units - 43

Clubs and Organizations

Business and Civic - Chamber of Commerce, Jaycees, Kiwanis, Lions, Rotary, Civitan, Ministerial Association, Red Cross, Farm Bureau, United Givers Fund, Optimist

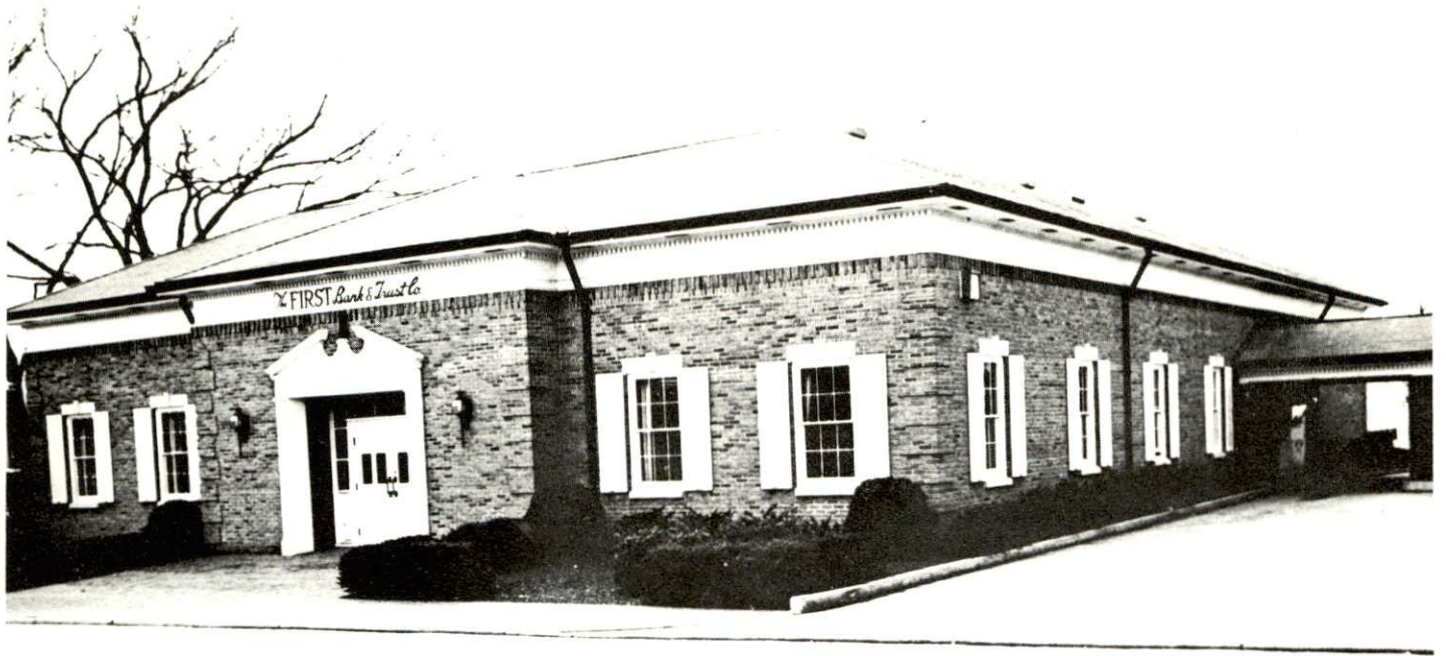
Fraternal - American Legion, Eagles, IOOF, Masons, VFW, Elks

Women's - Business and Professional Womens Club, Eastern Star, Garden Club, Rebekah Lodge, American Legion Auxiliary, Daughters of Confederacy, League of Women Voters, United Church Women

Youth - Boy Scouts, Girl Scouts, Cub Scouts, Brownies, FFA, FHA, 4-H, Beta Club, FBLA, Junior Achievement, Teen Club, National Honor Society

Other - Band Boosters, Book Lovers, Caldwell Flying Club, Riding Club, Sportsman Club





The First Bank & Trust Company



Farmers Bank & Trust Company





First Baptist Church



Caldwell County Times



## RECREATION

### Local

#### Public Recreation Facilities

Supervised program - Youth Incorporated  
Park - 1  
Playground - 1  
Tennis courts - 4  
Baseball diamonds - 6  
Football field - 1  
Other - basketball court

#### Private Recreation Facilities

Country club - 1  
Golf course - 1  
Swimming pool - 1  
Movie theaters - 1 indoor, 1 drive-in

#### Tourist Attractions

Big Spring Park  
Old Elkhorn Tavern

#### Cultural Events

Community Concert Series

### Area (Within 70 miles)

Kenlake State Resort Park  
Kentucky Dam Village State Resort Park  
Pennyrile Forest State Resort Park  
Lake Barkley State Resort Park  
Columbus-Belmont Battlefield State Park  
John James Audubon State Park  
Lake Malone State Park  
Land Between the Lakes National Recreation Area  
Ellis Park Thoroughbred Race Course (Henderson)

AGRICULTURE - NATURAL RESOURCES - CLIMATE

Agriculture 12/

	<u>Caldwell County</u>	<u>Labor Market Area</u>
Total land area (acres)	228,480	1,952,640
Percent of area in farm land	68.0	60.9
Number of farms	944	6,283
Average size of farms (acres)	164.5	189.4
1964 value of all farm products	\$ 4,102,083	\$34,986,020
Value per farm	4,345	5,568
Total crop sales	1,450,748	17,505,008
Total livestock & livestock products	2,651,334	17,461,007
1969 agricultural production included:		
Burley tobacco (lbs.)	781,000	8,169,000
Corn (bu.)	936,000	10,284,000
Cattle and calves (number)	33,100	194,200
Hogs and pigs (number)	20,300	183,100
Milk production, 1968 (lbs.)	12,210,000	49,950,000

Natural Resources

Principal mineral resources	Limestone and fluorspar
Other mineral resources	Coal, clays and shales
Acres of commercial forest land	78,900
Most abundant tree species	Red oak, white oak, hickory, yellow poplar, beech, hard maple, ash

Climate 13/

	<u>Caldwell County</u>
Temperature	
Annual mean (30-year record)	60.0 degrees
Average annual 1971	59.3 degrees
Record highest, July 1966 (6-year record)	103.0 degrees
Record lowest, January, 1966 (6-year record)	- 6.0 degrees
Seasonal heating degree days (30-year record)	3,578
Precipitation	
Mean annual total (30-year record)	45.17 inches
Mean annual snow and sleet (30-year record)	11.70 inches
Total precipitation 1971	40.65 inches
Mean number days precipitation, (.01 inch or more) (30-year record)	118
Average number days thunderstorms (30-year record)	55
Prevailing winds (32-year record)	Northwest



## HISTORY

Caldwell County is located in the Pennyrile Region of western Kentucky, covering 357 square miles of territory. The Tradewater River flows along its northeastern boundary and Lake Beshear and Pennyrile Forest border its southeastern side. An outlet of Lake Barkley extends into its western half. The land surface is rolling to hilly and the soil is fairly productive. About one-third of the county's area is forested, and there are large deposits of fluorspar.

The first settlers in the area were William Prince and Thomas Frazier, who held land granted by Virginia. Prince gave land and founded Princeton, and Frazier established a settlement at nearby Big Springs. Both are now incorporated into Princeton.

Caldwell became Kentucky's fifty-first county in 1809, its territory taken from Livingston County. It was named for General John Caldwell, a Virginia native who came to Kentucky, where he became prominent in the state's early politics, and became Lieutenant Governor.

In 1810, a year after its formation, Caldwell County had 4,268 inhabitants. The population had reached 13,199 by 1950, since which time it has remained stable, with 13,073 in 1960 and 13,179 in 1970. Princeton had a population of 6,292 in 1970.

Caldwell County has had a history of interest in education. Caldonia Academy and Princeton Seminary opened the way for founding of Cumberland College in 1826, which operated for 34 years. Princeton College was founded in 1860, and served the area until the founding of the state colleges.

Agriculture accounted for 700 of the county's 5,500 employed in 1971, with burley tobacco, corn, cattle, milk and hogs the principal products. Manufacturing employment was up sharply since 1960, to 1,480 in 1971, with the greatest concentration in machinery and metal products. Largest of the county's firms is Arvin Industries, which make electric scissors, hair dryers, and radio components, and Princeton Hosiery Mills, producing infants' and childrens' wear.

A major transportation artery, the Western Kentucky Parkway, bisects the county from east to west. Recreational opportunities are afforded by Lake Beshear, Lake Barkley and Kentucky Lake.

## SOURCES OF INFORMATION

- 1/ U. S. Department of Commerce, Bureau of the Census, Census of Population, 1950, 1960, 1970.
- 2/ Kentucky Department of Economic Security, Division of Research and Statistics.
- 3/ Kentucky Department of Economic Security, Number of Workers in Manufacturing Industries Covered by Kentucky Unemployment Insurance Law Classified by Industry and County, September 1961, September 1971.
- 4/ Kentucky Department of Commerce, 1973 Kentucky Directory of Manufacturers.
- 5/ Kentucky Department of Economic Security, Kentucky Labor Supply Estimates by County, January 1972.
- 6/ Kentucky Department of Commerce, Future Labor Supply by 1978.
- 7/ University of Kentucky, Office of Development Services and Business Research, Total Personal Income for Kentucky.
- 8/ University of Kentucky, Office of Development Services and Business Research, Per Capita Income in Kentucky.
- 9/ Illinois Central Gulf Railroad, Chicago, Illinois.
- 10/ Harper Truck Service, Paducah, Kentucky.
- 11/ Kentucky Department of Revenue, Kentucky Property Tax Rates, 1972.
- 12/ U. S. Department of Commerce, Bureau of the Census, Census of Agriculture, 1964. U. S. Department of Agriculture and Kentucky Department of Agriculture, Kentucky Agricultural Statistics, 1970.
- 13/ U. S. Department of Commerce, Environmental Science Services Administration, Climatological Data, 1971.

All other information was obtained from governmental offices, local businesses and organizations.