

1967

Industrial Resources: Calloway County - Murray

Kentucky Library Research Collections
Western Kentucky University, spcol@wku.edu

Follow this and additional works at: https://digitalcommons.wku.edu/calloway_cty

 Part of the [Business Administration, Management, and Operations Commons](#), [Growth and Development Commons](#), and the [Infrastructure Commons](#)

Recommended Citation

Kentucky Library Research Collections, "Industrial Resources: Calloway County - Murray" (1967). *Calloway County*. Paper 13.
https://digitalcommons.wku.edu/calloway_cty/13

This Report is brought to you for free and open access by TopSCHOLAR®. It has been accepted for inclusion in Calloway County by an authorized administrator of TopSCHOLAR®. For more information, please contact topscholar@wku.edu.

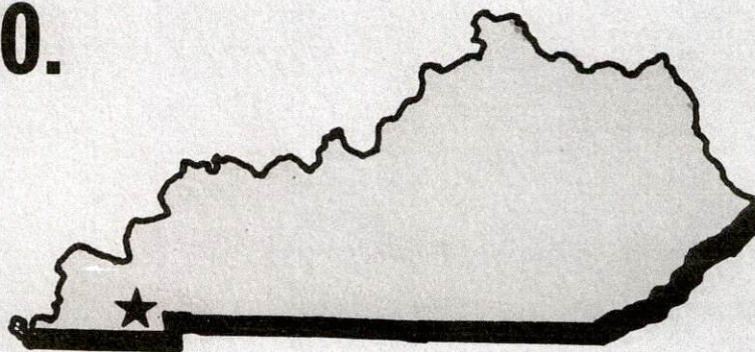


YOUR GUIDE TO A

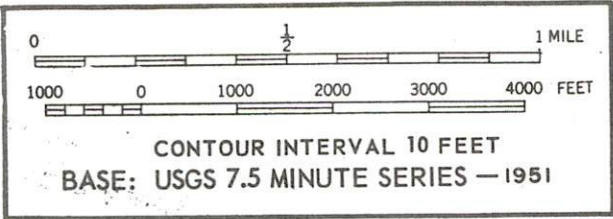
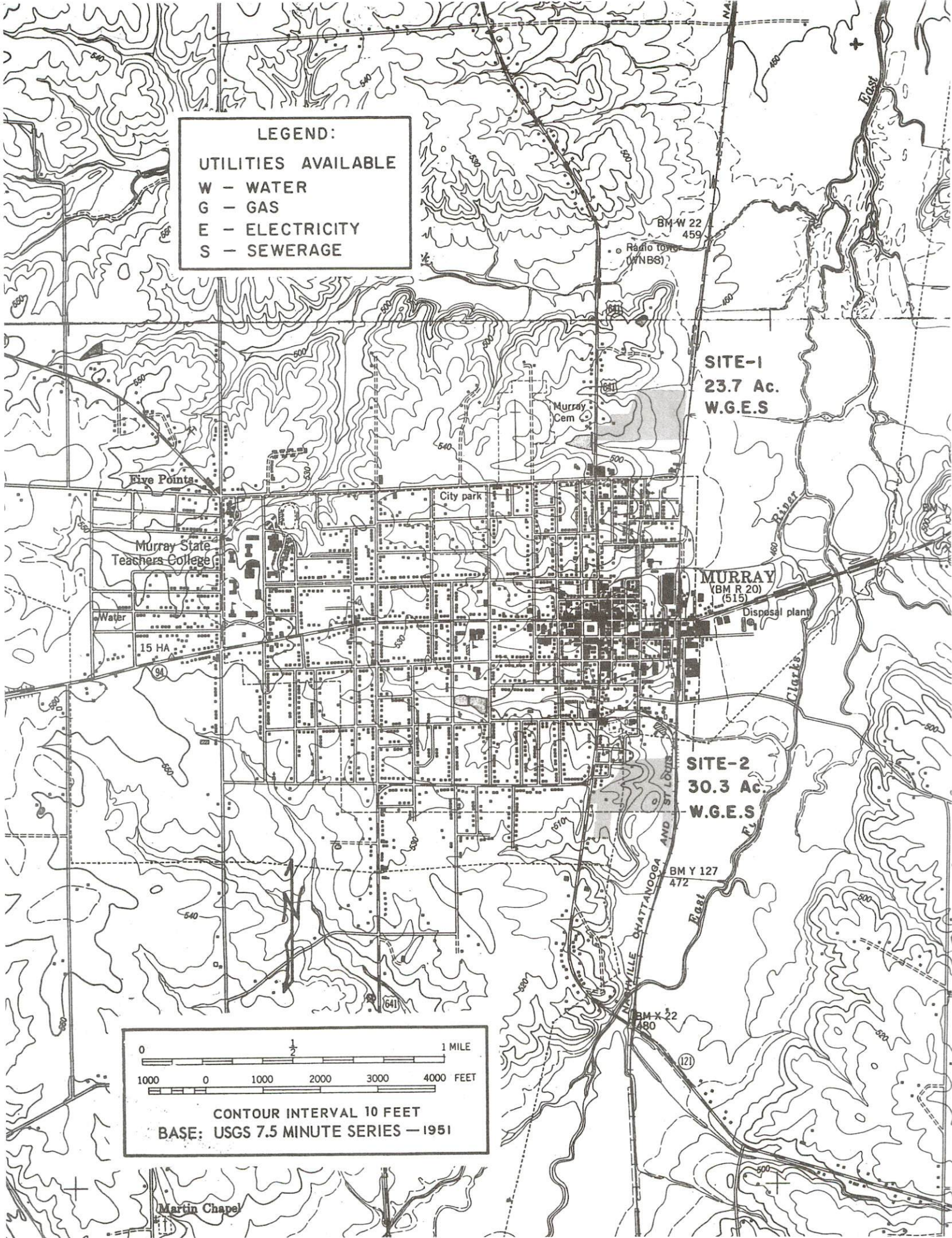
KENTUCKY INDUSTRIAL SITE

Kentucky Library WKU

MURRAY-CALLOWAY CO.
HAS THE
LOCATION



LEGEND:
UTILITIES AVAILABLE
 W - WATER
 G - GAS
 E - ELECTRICITY
 S - SEWERAGE



Martin Chapel

MURRAY-CALLOWAY COUNTY INDUSTRIAL FOUNDATION, INC.

The City of Murray has adopted an exceptionally flexible plan to aid industry, in that the Murray-Calloway County Industrial Foundation is a nonprofit agency that acts as a department of the Chamber of Commerce. Officers are interlocking, and responsible to both organizations.

The Chamber of Commerce has available for industrial plant locations 54 acres of choice industrial property located within the corporate limits of Murray. This acreage is divided into two sites of 23.7 and 30.3 acres. This property is of level to gently rolling topography with opportunity to build multi-level or single story buildings.

Price per acre is subject to negotiation with the individual prospect.

MURRAY-CALLOWAY COUNTY INDUSTRIAL SITE NO. 1
SITE SURVEY INFORMATION

SITE DESCRIPTION:

Total acreage: 23.7 acres

Location: North edge of city limits

Distance from city limits: Within city limits

Type neighborhood: Industrial

Proximity to residential property: Adjacent/sparse

Zoning: Industrial

Ownership: Murray Chamber of Commerce

Cost: \$38,500 subject to negotiation ; Terrain: Rolling

Elevation: 465-485 feet ; Highest known high water: 463 feet

Estimated grading cost: \$6,000

Transportation: Rail, highway, air charter service

Roadway access: Adjacent to U. S. 641

Type road, surface, width, etc.: 24-foot bituminous concrete

Distance from arterial street or highway: Adjacent

Railroads serving: Louisville & Nashville Railroad

Location of line: Adjacent

Cost of extending to site: None (except desired spurs)

Distance to commercial airport: 5 miles to Kyle Field and

45 to Paducah

Public transportation: Taxi only

Type soil: Bank gravel, clay ; Drainage: Excellent

SITE NO. 1 SURVEY INFORMATION
PAGE 2

Utilities:

Water:

Company: Murray Water System

Location and size of mains: 8-inch

Pressure: 85 psi; Cost of extending to site: None

Gas:

Company: Murray Natural Gas System

Location of nearest lines: On site

Size: 2-inch; Pressure: 50 to 400# available

Source: Texas Gas Transmission Corporation

Cost of extending to site: None

Electricity:

Company serving: Murray Electric System

Sewerage:

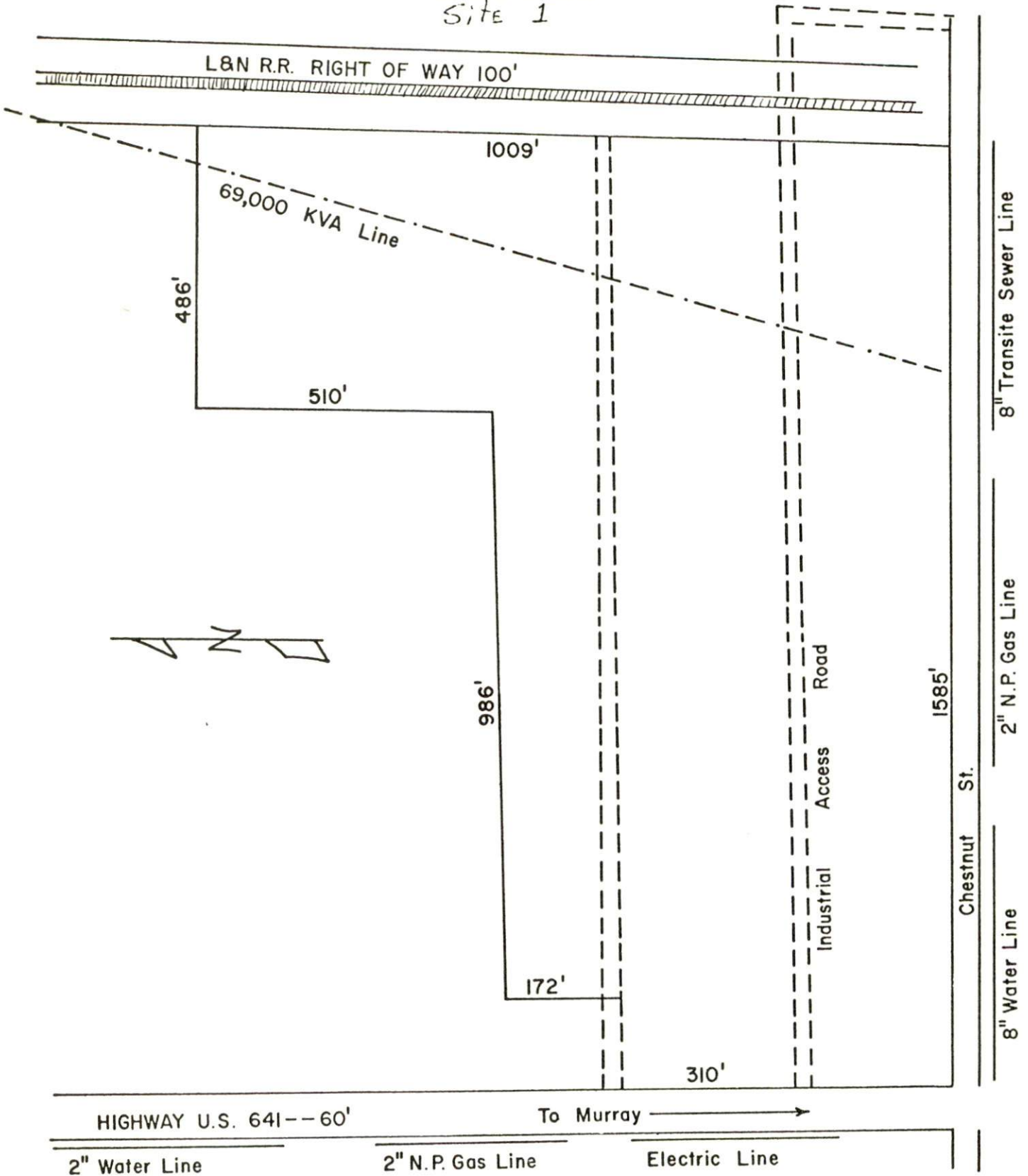
Storm: Natural drain; Sanitary: None, will be extended

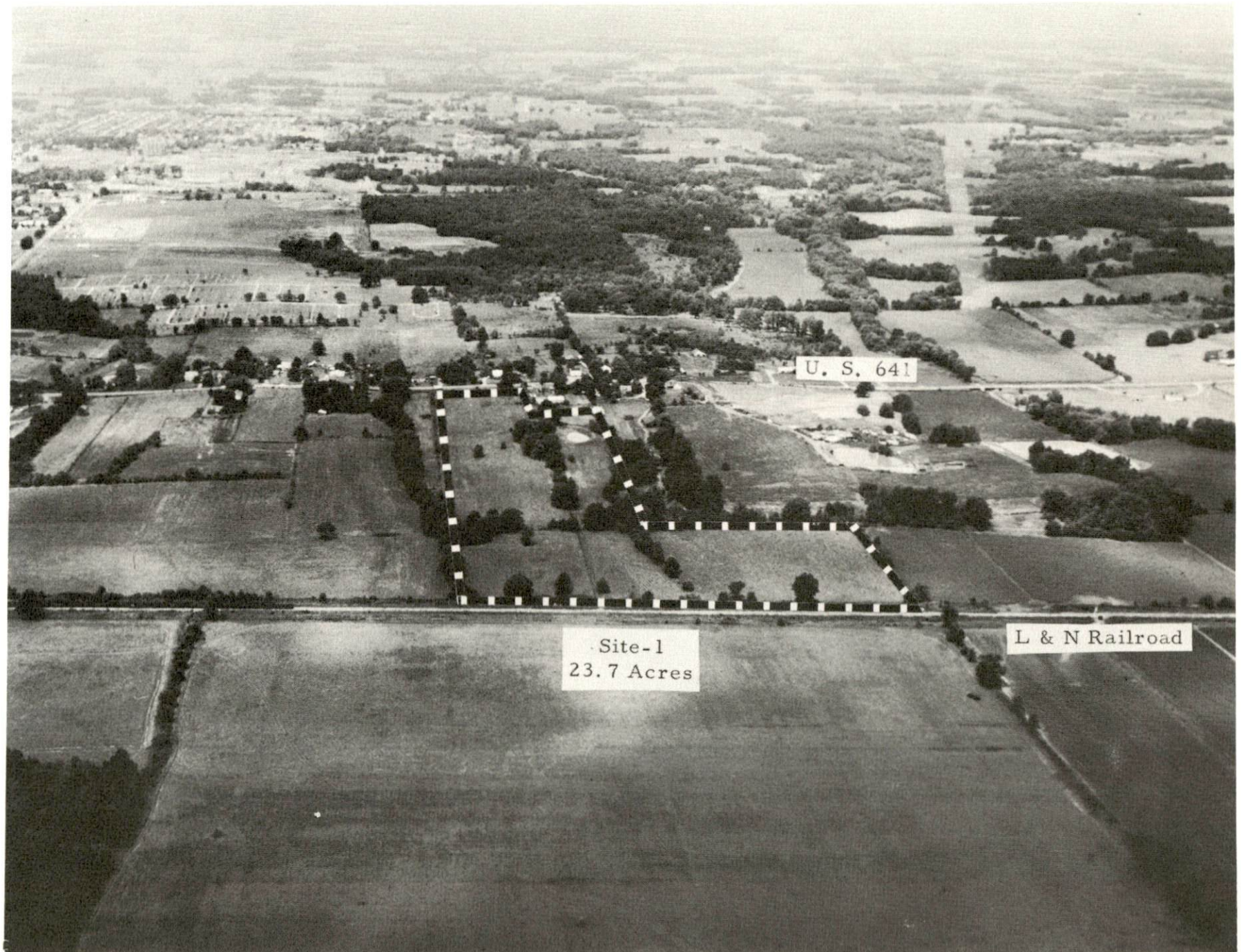
Size mains: Size necessary

Prevailing winds: Southwest

REMARKS: This site has 1,009 feet of rail frontage, with 310 feet of highway frontage. All utilities are on site or will be extended to site without cost. Size can be enlarged by acquisition of adjacent properties.

MURRAY CHAMBER OF COMMERCE
LAND PLAT
Site 1





U. S. 641

Site-1
23.7 Acres

L & N Railroad

MURRAY-CALLOWAY COUNTY INDUSTRIAL SITE NO. 2
SITE SURVEY INFORMATION

SITE DESCRIPTION:

Total acreage: 30.3 acres

Location: Southeast fringe of city limits

Distance from city limits: Within city limits

Type neighborhood: Industrial

Proximity to residential property: Adjacent

Zoning: Industrial

Ownership: Murray-Calloway County Industrial Foundation

Cost: \$62,500 (Negotiable) ; Terrain: Rolling

Elevation: 465-490 feet; Highest known high water: 463 feet

Estimated grading cost: \$5,800 to \$10,000

Transportation: Rail, highway, air charter

Roadway access: Kentucky 121, U. S. 641 adjacent to site

Type road, surface, width, etc.: 24 feet bituminous concrete

Distance from arterial street or highway: Adjacent

Railroads serving: Louisville & Nashville Railroad

Location of line: Adjacent to site

Cost of extending to site: On site

Distance to commercial airport: 5 1/2 miles to Kyle Field

(Charter Service); 45 miles to Paducah's Barkley Field

Public transportation: Taxi only

Type soil: Bank gravel, clay ; Drainage: Excellent

SITE NO. 2 SURVEY INFORMATION
PAGE 2

Utilities:

Water:

Company: Murray Water System

Location and size of mains: 10-inch

Pressure: 85 psi ; Cost of extending to site: None

Gas:

Company: Murray Natural Gas System

Location of nearest lines: Across street from site

Size: 4-inch; Pressure: 50 to 400# as needed

Source: Texas Gas Transmission Corporation

Cost of extending to site: None

Electricity:

Company serving: Murray Electric System

Sewerage:

Storm: Natural drain; Sanitary: Main interceptor line

Size mains: 24-inch

Prevailing winds: Southwest

REMARKS: This site has all utilities necessary for plant operation, with a 200-car reserve rail siding available. Three city streets lead into the site. TVA has a 161 KVA substation in the southeast corner and Murray's main substation is just north of the site.

MURRAY CHAMBER OF COMMERCE
LAND PLAT

SITE-2

882'

209.5'

KY-121 So. No. 4st ST to U.S 641

10 in. Water
4 in. H.D. Gas

Back ST.

3rd ST.
7 in Gas

2 in. Gas
2nd ST.

225.5'

939.3'

889.1'

T.V.A Power Line Easement 100 R.O.W

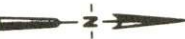
TOTAL AREA 805,913,10 SQ. FT.
41.458 Ac.

PLANT SITE AREA 30.338 Ac.

MURRAY-CALLOWAY COUNTY INDUSTRIAL FOUNDATION

19.5'

432'



293'

242'

947.5'

L & N R.O.W 100'

15 in. Sewer
2 in. Gas

30 FT. Rounded

Spur 200 Car Reserve Track

T.V.A
SUB STATION
11.56 Ac.

143'

400'

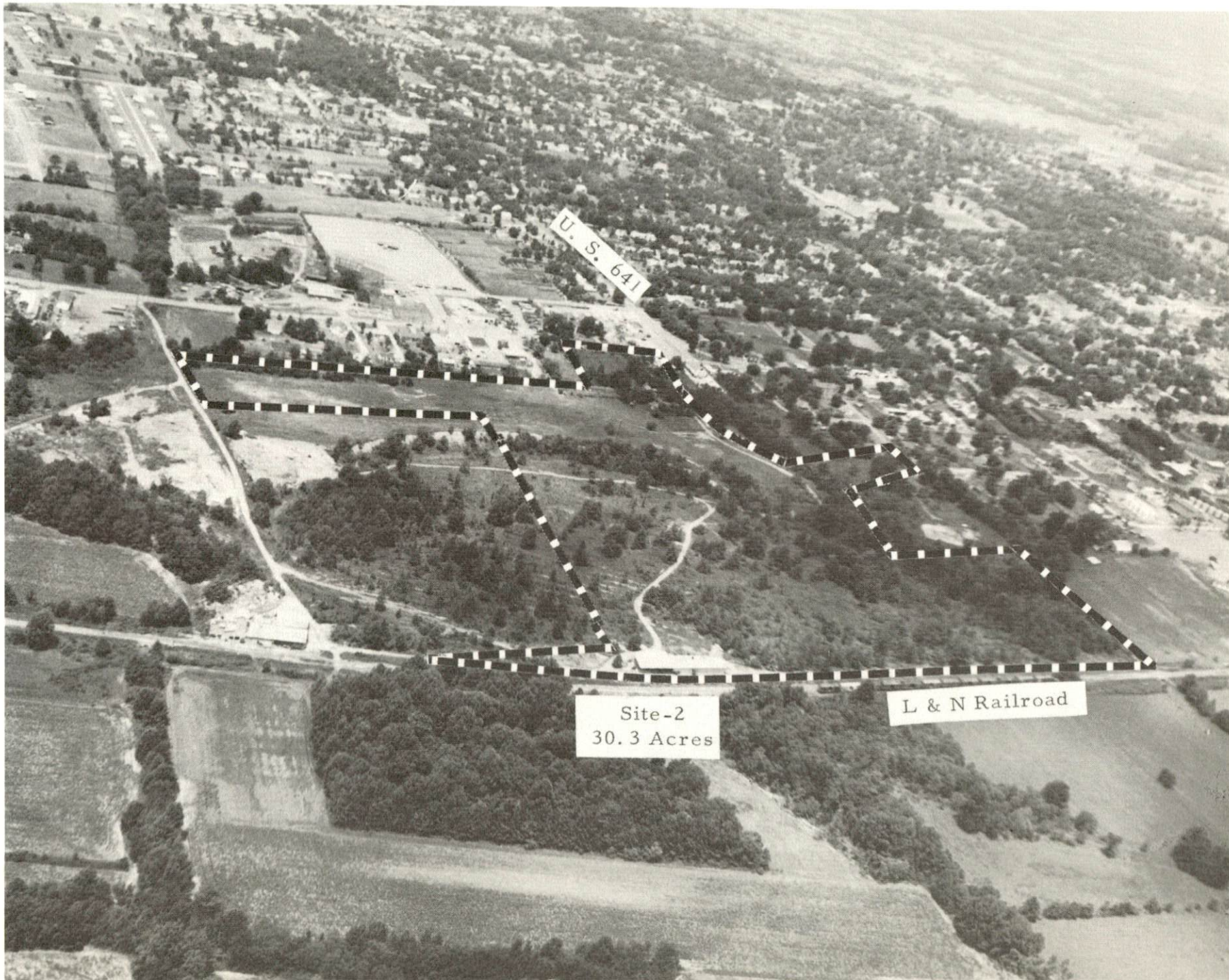
499'

220'

226'

272'

509'



U. S. 641

Site-2
30.3 Acres

L & N Railroad

MURRAY, KENTUCKY

LOCATION:

Murray is located in the southwest corner of Kentucky. It is 45 miles southeast of Paducah, Kentucky, and 164 miles northeast of Memphis, Tennessee.

POPULATION:

1960: Murray - 9,303	Calloway County - 20,972
1966: Murray - 15,184*	Calloway County - 26,088*

LABOR SUPPLY:

The Murray labor supply area includes Calloway and all adjoining counties. Fantus Area Research, Inc., estimated in November, 1966, that there were from 3,300 to 3,700 males and from 2,075 to 2,475 females in this area between the ages of 18 and 45 who are currently recruitable for manufacturing jobs.

TRANSPORTATION:

Railroads: Murray is served by the Louisville & Nashville Railroad, operating between Paducah, Kentucky, and Memphis, Tennessee.

Air: Murray is served by Barkley Field in Paducah, Kentucky, 45 miles distant. Barkley Field is served by Delta and Ozark Airlines. The Paris-Henry County Airport, Paris, Tennessee, also serves Murray. Kyle Field, 5 miles northwest of Murray, has a 3,000 by 75-foot paved runway capable of handling small aircraft.

Trucks: Murray is served with both interstate and intrastate common carrier service by six trucking firms.

Bus Lines: Western Kentucky Stages and Southern Greyhound Bus Lines serve Murray.

Highways: Highways serving Murray include U. S. Route 641 and Kentucky Highways 94 and 121.

*Furnished by the Murray Chamber of Commerce.

HIGHWAY DISTANCES: From Murray, Kentucky, to:

<u>Town</u>	<u>Miles</u>	<u>Town</u>	<u>Miles</u>
Atlanta, Ga.	360	Lexington, Ky.	288
Birmingham, Ala.	295	Louisville, Ky.	236
Chicago, Ill.	404	Nashville, Tenn.	98
Cincinnati, Ohio	340	New York, N. Y.	1,007
Detroit, Mich.	586	Pittsburgh, Pa.	912
Knoxville, Tenn.	280	St. Louis, Mo.	210

UTILITIES:

Electricity: Electricity is furnished by the Murray Electric System. It obtains its power from TVA. There are 69,000 volt transmission lines broken down to 2,400/4,160 volts for the city. There are seven substations to facilitate a more even distribution.

Natural Gas: Natural gas is distributed in Murray by a municipally owned company, whose source of supply is the Texas Gas Transmission Corporation's 26-inch high pressure line. One 6-inch trunk line supplies the city natural gas with a BTU content of 1,030, specific gravity of .60, and pressure of 400 psi.

Sewerage: The municipally owned sewerage disposal plant, built in 1948 at a cost of \$250,000, has a high rate filtering system. Since the building of the plant, improvements have been made costing \$1,393,000. The system now has a daily capacity of 3,000,000 gallons, with the average flow being 1,600,000 gallons per day. The sewerage rate is 33 1/3 percent of the water bill.

Water: Water is distributed in Murray by the Murray Water and Sewerage System, which is supplied by five deep wells. The system has a peak capacity of 5,000 gpm and a storage capacity of 2,325,000 gallons. Average daily use is 1,347,000 gallons and the maximum use has been 3,000 gpm. The distribution lines range in size from 6 to 12 inches, with an average pressure of 85 psi.

HEALTH:

Hospitals: Hospital service is provided by the Murray-Calloway County Hospital with 149 beds. It is equipped with the latest medical equipment. This new city-county hospital is a two-building construction connected by a tunnel. The cost of the new construction was \$1,750,000. Eighty new units will be added in 1968.

Public Health: Two fully-equipped independent clinics provide the highly specialized services of a urologist, pediatrician, lab technicians, obstetrician, gynecologist, medical doctor, and surgeon.

EDUCATION:

Graded Schools: The Murray Independent School District has a total enrollment of 846 elementary students and 670 high school students. The student-teacher ratios are 24 to 1 and 14 to 1 in the elementary and high school grades, respectively. The Calloway County School System has an enrollment of 1,464 elementary students and 633 high school students. Student-teacher ratios are 30 to 1 and 19 to 1 for the elementary and high school grades, respectively.

Colleges: Murray State University, a coeducational, state-supported university, is located at Murray. The 179-acre campus, splashed with many trees and gardens, is one of the most beautiful in the South. In a setting typical of the natural beauty found in Western Kentucky, Murray State University has stately buildings, the largest college auditorium in the state, a new field house, a magnificent library building, health building with indoor swimming pool, modern new dormitories, cafeterias and air-conditioned classrooms. The enrollment for 1967 was 6,493 full-time students. Eight baccalaureate degrees and six masters degrees are offered.

Other institutions of higher learning in the area include:

Paducah Junior College, Paducah, Kentucky, 45 miles
Hopkinsville Community College, Hopkinsville, Kentucky, 55 miles



Murray State University Library

RECREATION:

Local: Recreational facilities in Murray include: Murray City Park, consisting of 18 acres, has two lighted baseball fields, four tennis courts, picnic shelters, fireplaces, and children's equipment. Recreational facilities at Murray State University are also available to the public. They include: one lighted baseball field, six tennis courts and an indoor swimming pool which is available to local residents two nights a week. There is also a lighted baseball field at the City High School. All of these baseball parks are used to accommodate the Little League, Pony League, and American Legion baseball teams. Two country clubs have golf courses and pools.

Area: Kentucky Dam Village State Park is located on Kentucky Lake, approximately 35 miles northeast of Murray. Operated under park supervision are the following facilities: two boat docks; a large sand beach developed for swimming with shallow wading areas for children; a modern bathhouse; lodge rooms and housekeeping cottages; air-conditioned dining room, soda fountain, coffee shop and commissary; 18-hole golf course; badminton, tennis and croquet courts; and the Village Playhouse for summer theatrical productions.

Kenlake State Park is located approximately 15 miles east of Murray on Kentucky Route 94. Park facilities include: boat docks, dining rooms, beach, swimming, bathhouses, hotel, housekeeping cottages, 9-hole golf course, picnic areas, fishing facilities, and an amphitheater.

EXISTING INDUSTRY:

Firm	Products	Employment		
		Male	Female	Total
Chrisman Popcorn Co.	Popcorn	5	1	6
Ellis Popcorn Co.	Popcorn	8	2	10
Fitts Block & Ready Mix Co., Inc.	Concrete block, ready mix concrete	17	0	17
Five Point Welding Shop	Machine shop			2
Hutson Chemical Co., Inc.	Fertilizer	7	0	7
J. G. Chemists	Industrial adhesives, cleaners, solvents	2	0	2

(cont'd.)

Firm	Product	Employment		
		Male	Female	Total
Ledger & Times Publishing Co., Inc.	Newspaper, job printing	12	2	14
Murray Coal & Ice Co., Inc.	Ice	4	0	4
Murray Fabrics, Inc.	Knitted tubing	2	9	11
Murray Machine & Tool Co.	Water tanks, ornamental ironwork	7	0	7
Murray Popcorn, Inc.	Popcorn processing	4	0	4
National Work Clothes Rental	Work garments			237
Parker Popcorn Co.	Popcorn processing	8	0	8
Pocock Enterprises	Safety lights for automobiles, wire products	1	1	2
Ryan Milk Co.	Dairy products	40	10	50
Sager Glove Co.	Finish fireproof clothing			100
641 Slaughter House	Meat processing, country sausage	2	2	4
Smith & Sons	Country ham, bacon	2	0	2
Sykes Brothers Lumber Co.	Lumber	12	1	13
Tappan Co.	Gas and electric ranges, gray iron castings, nodular iron castings	563	30	593
Thurmond Feed Co.	Feed	2	0	2
Valentine Printing	Job printing	0	1	1

PREVAILING WAGE RATES:

Specific rates by job classification will be provided on a personal basis by the management of manufacturing firms in Murray. Arrangements for obtaining this information and other labor data, such as fringe benefits, can be made through the Murray Chamber of Commerce or the Kentucky Department of Commerce.

UNIONS:

Unions represented in the area include: International Union, United Automobile, Aircraft and Agricultural Implement Workers of America, AFL-CIO; United Auto Workers, AFL-CIO; United Packinghouse Workers of America, AFL-CIO; and Amalgamated Clothing Workers of America.

For detailed information concerning Murray,
please request publication
"Industrial Resources, Murray, Kentucky."

This copy has been prepared by the Kentucky Department of Commerce, Division of Research, and the cost of printing paid from state funds.

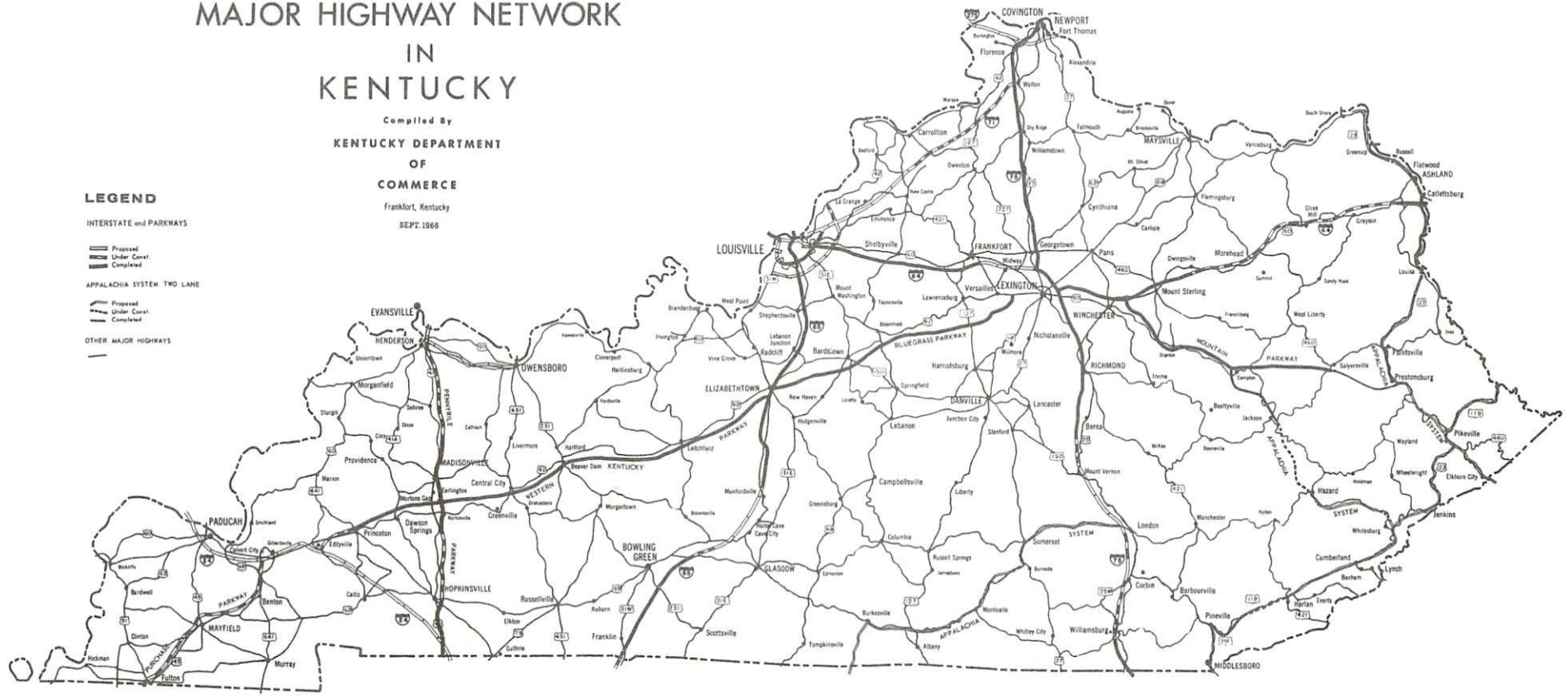
MAJOR HIGHWAY NETWORK IN KENTUCKY

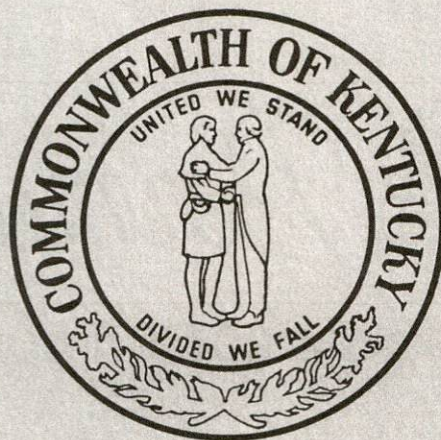
Compiled By
KENTUCKY DEPARTMENT
OF
COMMERCE
Frankfort, Kentucky
SEPT. 1966

LEGEND

- INTERSTATE and PARKWAYS
- Proposed
 - Under Const.
 - Completed
- APPALACHIA SYSTEM TWO LANE
- Proposed
 - Under Const.
 - Completed
- OTHER MAJOR HIGHWAYS
- Proposed
 - Under Const.
 - Completed

MAJOR HIGHWAY NETWORK





PREPARED BY
KENTUCKY DEPARTMENT OF COMMERCE
FRANKFORT, KENTUCKY

AND

MURRAY - CALLOWAY COUNTY
INDUSTRIAL FOUNDATION, INC.

1967