

1974

Industrial Resources: Carroll County - Carrollton

Kentucky Library Research Collections
Western Kentucky University, spcol@wku.edu

Follow this and additional works at: https://digitalcommons.wku.edu/carroll_cty

 Part of the [Business Administration, Management, and Operations Commons](#), [Growth and Development Commons](#), and the [Infrastructure Commons](#)

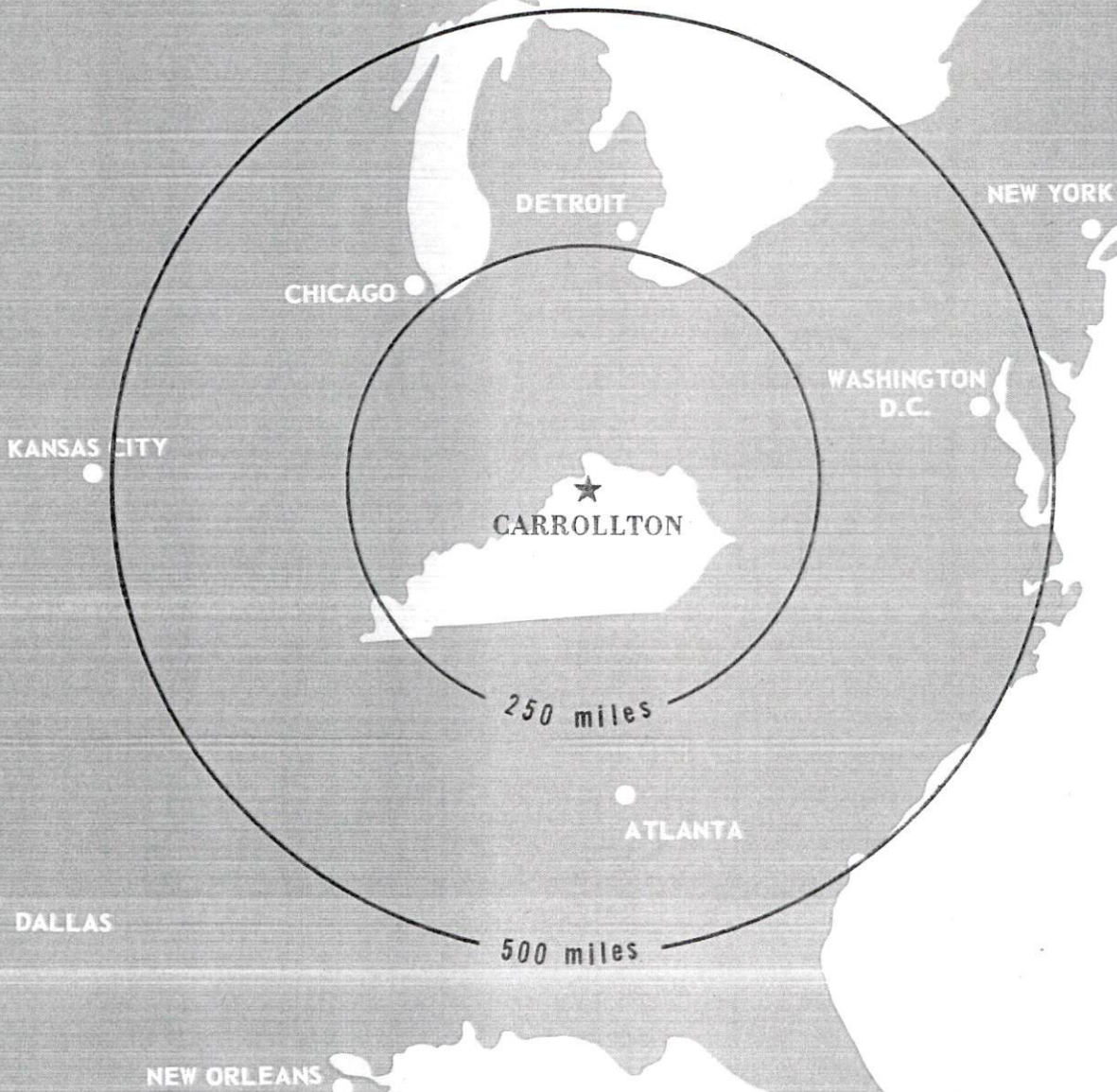
Recommended Citation

Kentucky Library Research Collections, "Industrial Resources: Carroll County - Carrollton" (1974). *Carroll County*. Paper 11.
https://digitalcommons.wku.edu/carroll_cty/11

This Report is brought to you for free and open access by TopSCHOLAR®. It has been accepted for inclusion in Carroll County by an authorized administrator of TopSCHOLAR®. For more information, please contact topscholar@wku.edu.

INDUSTRIAL RESOURCES

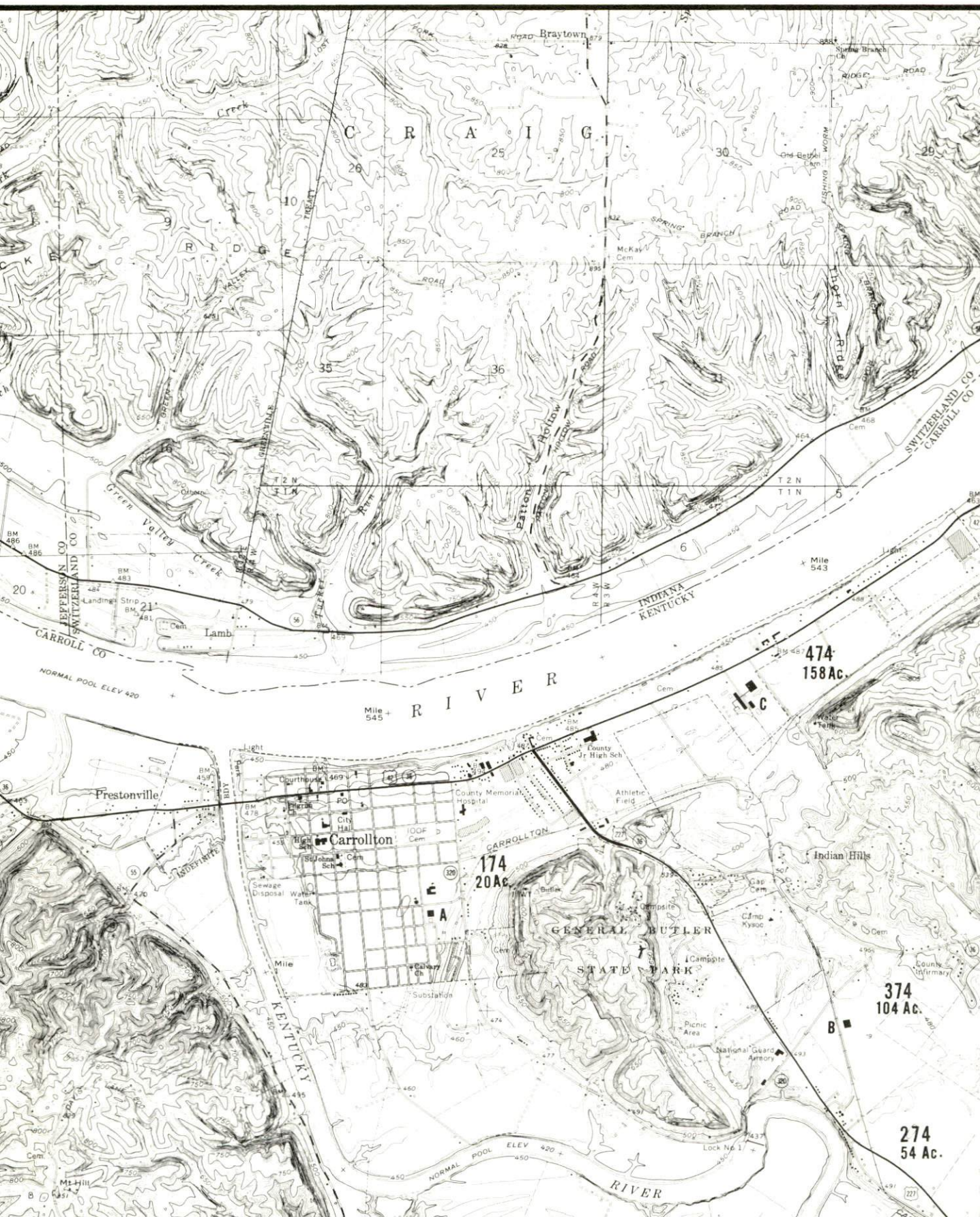
CARROLLTON ***KENTUCKY***

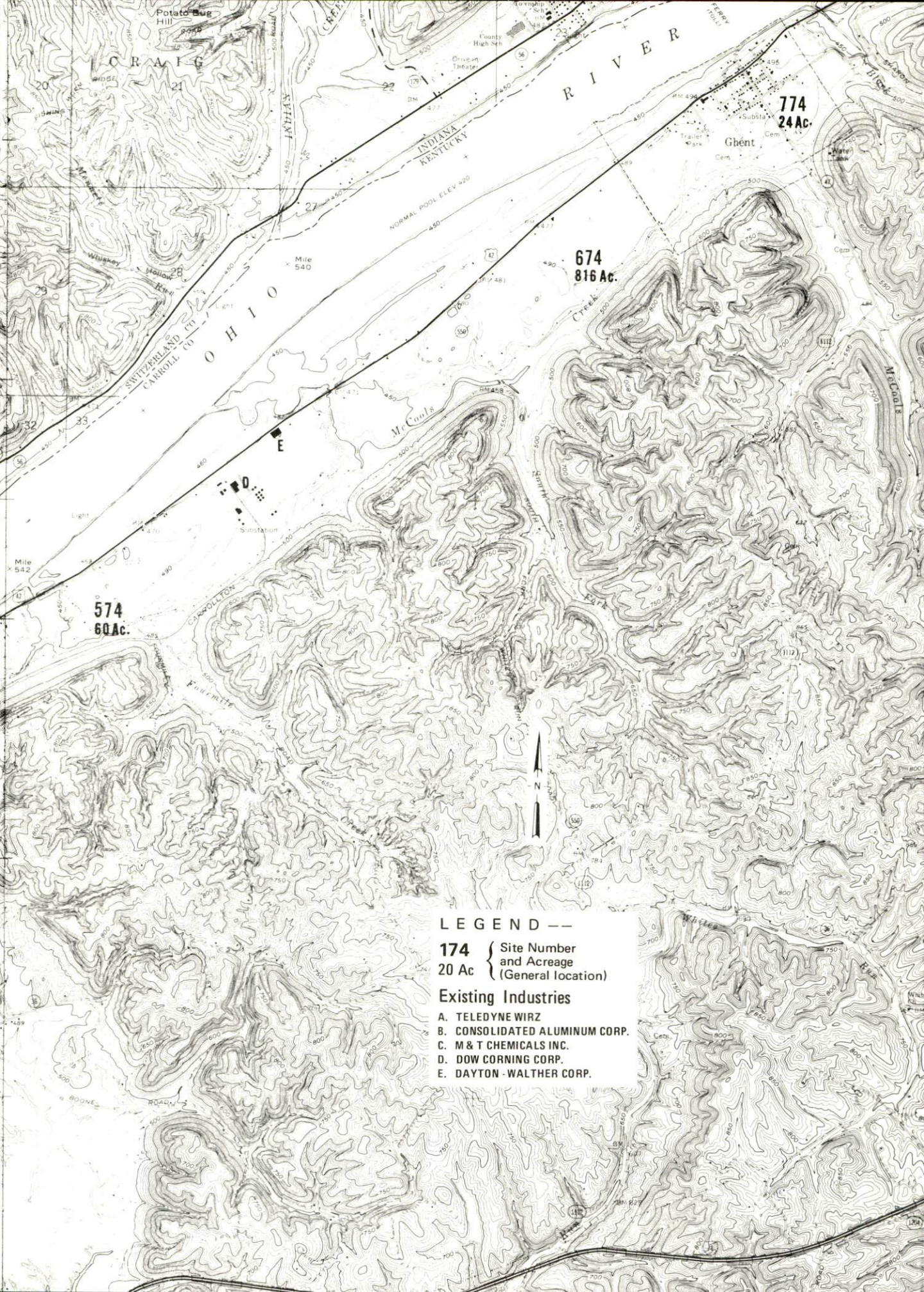


CARROLL COUNTY, KENTUCKY

CARROLLTON, KENTUCKY -- Index to Industrial Sites -- 1974

For detailed data on individual sites, contact Mr. John Perkins, Post Office Box 30, Carrollton, Kentucky 41008 or the Kentucky Department of Commerce, Capital Plaza Tower, Frankfort, Kentucky 40601.





CRAIG

RIVER

INDIANA
KENTUCKY

OHIO

SWITZERLAND CO
CARROLL CO

774
24 Ac.

674
816 Ac.

574
60 Ac.

LEGEND --

174 { Site Number
and Acreage
20 Ac { (General location)

Existing Industries

- A. TELEDYNE WIRZ
- B. CONSOLIDATED ALUMINUM CORP.
- C. M & T CHEMICALS INC.
- D. DOW CORNING CORP.
- E. DAYTON - WALTHER CORP.

INDUSTRIAL RESOURCES
CARROLLTON, KENTUCKY

Prepared by
The Kentucky Department of Commerce
in cooperation with
The Carroll County Chamber of Commerce

1974

This copy has been prepared by the Kentucky Department of Commerce,
Division of Research and Planning, and the cost of printing paid from
state funds.

TABLE OF CONTENTS

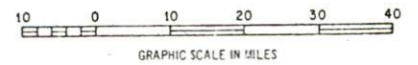
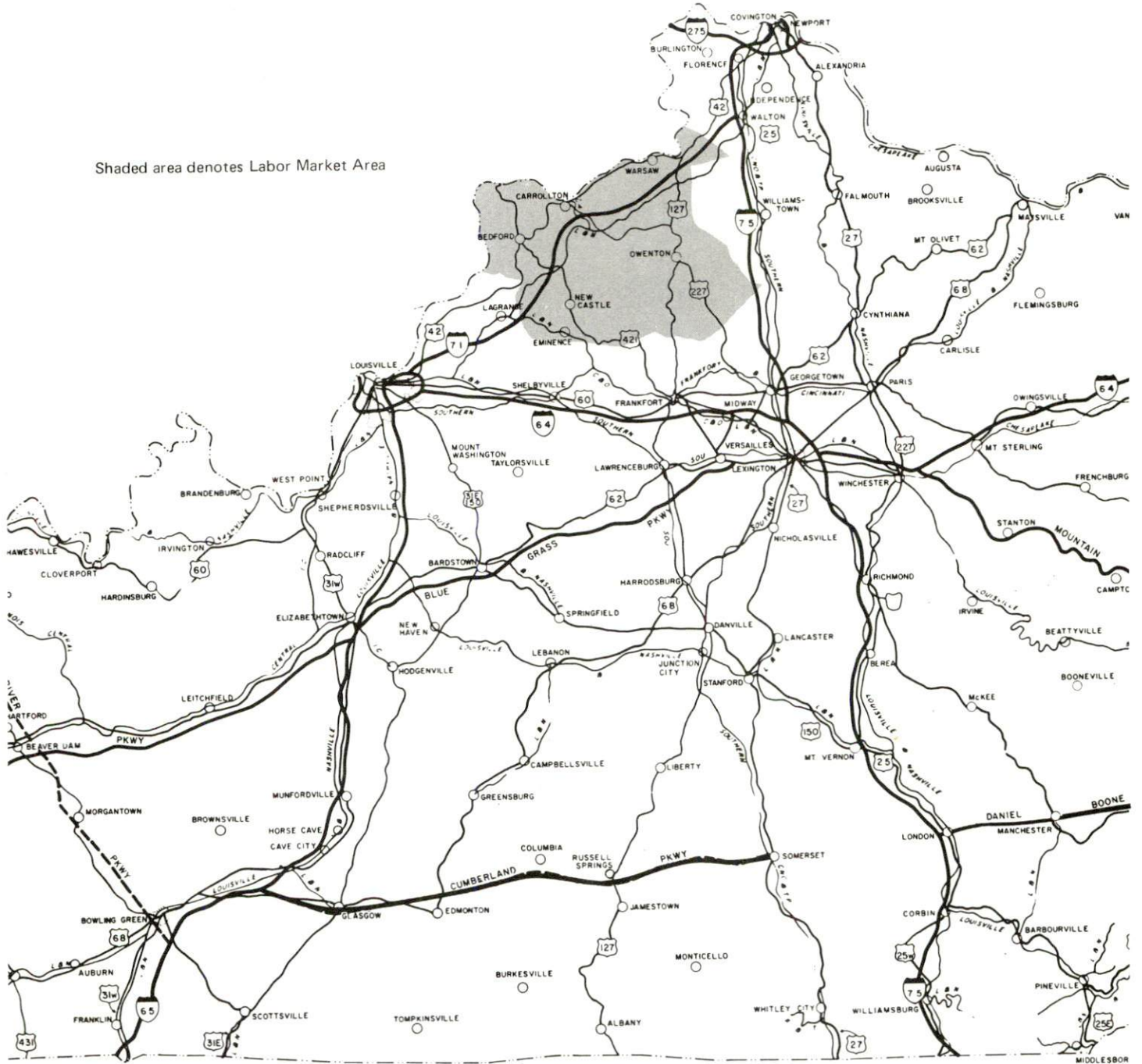
<u>Chapter</u>	<u>Page</u>
INDUSTRIAL SITES	i
CARROLLTON, KENTUCKY - A RESOURCE PROFILE	1
THE LABOR MARKET	5
Population Trends	5
General Employment Characteristics, 1972	5
Manufacturing Employment Trends by Industry	6
Carrollton Manufacturing Firms, Their Products and Employment	6
Wages	11
Labor Organizations	12
Estimated Male Labor Supply	12
Estimated Female Labor Supply	12
Per Capita Personal Income.	13
TRANSPORTATION	14
Rail	14
Truck Service	14
Air	15
Water.	16
Bus.	16
Taxi	16
Rental Services	16
POWER AND FUEL	17
Electricity	17
Natural Gas	17
Other Fuels	18
WATER AND SEWERAGE	19
Water.	19
Sewerage	20
LOCAL GOVERNMENT	21
City	21
County	21

<u>Chapter</u>	<u>Page</u>
Assessed Value of Property, 1973	21
Property Taxes	21
Local Property Tax Rate Per \$100 of Assessed Valuation, 1973	22
Utilities Gross Receipts Tax for Schools	22
Planning and Zoning	22
Safety	22
Police	22
Fire	23
Rescue Service	23
Sanitation	23
 EDUCATION	 24
Public Schools	24
Vocational Schools	24
Colleges and Universities	26
 HEALTH	 27
Hospitals	27
Nursing Homes	27
Public Health	27
 OTHER LOCAL FACILITIES	 28
Communications	28
Library Services	28
Religious Institutions	29
Financial Institutions	29
Hotels and Motels	29
Clubs and Organizations	29
 RECREATION	 30
Local	30
Area	30
 AGRICULTURE - NATURAL RESOURCES - CLIMATE	 31
Agriculture	31
Natural Resources	31
Climate	32
 HISTORY	 33

CARROLLTON LABOR MARKET AREA



Shaded area denotes Labor Market Area



CARROLLTON, KENTUCKY - A RESOURCE PROFILE

Carrollton, county seat of Carroll County, is located in the Outer Blue Grass Region in northern Kentucky along the Ohio River. This growing river town is located near the point where the Kentucky River empties into the Ohio River. Carrollton, only 4 miles north of Interstate 71, is ideally situated for northeast and southwest travel. Carrollton is located only 50 miles northeast of Louisville and 69 miles northwest of Lexington, Kentucky; and 55 miles southwest of Cincinnati, Ohio. Carrollton's location on the rivers offers opportunity for many water oriented recreational activities.

Carrollton had a 1970 population of 3,884. Carroll County, with a total land area of 130 square miles, had a 1970 population of 8,523.

The Economic Framework

Total employment in Carroll County averaged 3,280 in 1972 with agriculture providing 440 jobs, trade and services 560, government 440, and manufacturing 1,060. Since 1963 manufacturing employment has increased by approximately 99 percent. Major industrial products are: tin organic chemical coatings, aluminum appliance trim, aluminum extrusions, and metal collapsible tubes.

Per capita personal income in the county in 1971 was \$2,902, an increase of approximately 89 percent since 1961.

The Carrollton labor market area includes Carroll County, its four surrounding Kentucky counties, and Jefferson and Switzerland Counties in Indiana. Employment in the Kentucky portion of the labor market area in 1972 totaled 11,560 jobs, with agriculture providing 3,460, trade and services 1,520, government 1,650, and manufacturing 1,710. Area manufacturing employment has increased by over 126 percent since 1963 with sharpest gains in the chemicals and fabricated metal products industries.

Despite important industrial gains in recent years the area still has a deficit of 1,696 jobs in manufacturing when measured against the national industrial employment-population ratio. This indicates an area where the potential for additional manufacturing production is excellent.

Resources for Growth

1. There is a current estimated labor supply of 1,430 men and 2,170 women available for industrial jobs in Carroll County and the surrounding Kentucky counties. In addition, 1,760 young men and 1,695 young women

in this area will become 18 years of age by 1980 and potentially available for employment. Also, the current labor supply can be increased by the number of men and women in the adjoining Indiana counties who are available for industrial jobs.

2. The local transportation capability is good. The Carrollton Railroad, a subsidiary of the Louisville & Nashville Railroad, provides Carroll County with excellent freight service. Located only 4 miles south of Carrollton is Interstate 71, providing easy highway access to Louisville and Cincinnati; Carrollton is also served by U. S. 42 and U. S. 227. There are seven truck lines serving Carrollton. Commercial air service and regular air service is available at both Louisville, Kentucky and Cincinnati, Ohio. Water transportation potential for Carrollton is excellent as a result of its location at the confluence of the Kentucky and Ohio Rivers.

3. In Carrollton, electricity is provided by the Kentucky Utilities Company. In Carroll County, electrical power is provided by the Owen County Rural Electric Cooperative Corporation and the Shelby Rural Electric Cooperative Corporation. Natural gas is provided by the Carrollton Utilities, whose source of supply is the Texas Gas Transmission Corporation.

4. One public school system operates within Carroll County. Two community colleges, four senior colleges, and two universities are located within 55 miles of Carrollton.

The Carroll County Area Vocational Education Center is located in Carrollton and offers training in seven different areas. Two state vocational-technical schools serve the Carrollton area: the Northern Kentucky State Vocational-Technical School, 53 miles away, offers 22 courses, and the Jefferson County State Vocational-Technical School, 54 miles away, offers 20 courses.

Community Programs for Improvement

Recent completed improvements:

1. Kentucky Utilities Company has a new office in Carrollton.
2. Kentucky Utilities Company has completed the first unit of its power expansion program with a \$100 million power plant in Carroll County.
3. Dow Corning Corporation has remodeled and expanded their plant.
4. Carrollton Redrying Company has completed a \$600,000 expansion program.
5. The Park-View Shopping Center has opened.

Improvements currently underway:

1. The Carrollton Utilities are beginning a project to increase the treatment capacity of the water plant to 1,000 gallons per minute. Completion is scheduled for June, 1975.
2. Engineering plans have been completed for Carrollton Utilities to add secondary treatment to its present sewage plant.
3. The Carroll County Water District #1 plans to increase the capacity of the water treatment plant to 300 gallons a minute. The project is expected to be completed by the end of 1974.
4. Kentucky Utilities Company has started the second unit of its power expansion program.
5. The Carroll County Public Library is opening a demonstration library with the help of federal funds and state support to encourage the people of Carroll County to permanently expand their library facilities.
6. M and T Chemicals, Incorporated, has a new expansion program underway.
7. Dayton-Walther Corporation is enlarging its existing facility. The addition is scheduled for summer, 1974.
8. The Carrollton Railroad extended trackage to the Kentucky Power Company and plans to extend trackage into Gallatin County.
9. Carroll County Ambulance Service will complete a new service storage and building facility by June 1, 1975.
10. A new \$500,000 shopping center is under construction on U. S. 227. It will open with three stores and will be completed by mid-summer, 1974.
11. General Butler State Resort Park is adding a tennis court.
12. Work will begin soon on the remodeling of the Carroll County Courthouse.

Recreation, Entertainment and Livability

Recreational opportunities are readily available in Carrollton due to its location on the Ohio River and its proximity to the metropolitan areas of Louisville, Kentucky, and Cincinnati, Ohio.

The Kentucky and Ohio Rivers offer public and private docking facilities and ramps for the enjoyment of water sports and fishing. Also many camping sites and picnic areas are scattered along the rivers.

In addition to a supervised recreation program sponsored by the Carrollton Recreation Department and the local churches, General Butler State Resort Park conducts a recreation program using some of the park facilities. The 809-acre General Butler State Resort Park is south of Carrollton's city limits. The park has a 25-acre lake, dock, 9-hole golf course, and swimming pool and features such activities as swimming, golfing, boating, ice skating, horseback riding, hiking, shuffleboard, and mini-train ride. Park accommodations include a lodge, cottages, and camping facilities. Located on the park grounds is the former home of General W. O. Butler, hero of the Battle of New Orleans.

Big Bone Lick State Park, 33 miles northeast of Carrollton, is a 512-acre park in the area of the world's largest graveyard of ice-age animals. Other features include the site of the ancient salt sulphur spring used by prehistoric animals. Although many bones have been removed from the area, the park museum still has an excellent exhibit. The park also features camping, a swimming pool, and picnic areas.

Churchill Downs, home of the Kentucky Derby, is in Louisville, only 50 miles away. Two thoroughbred racing meets and the world-famous Kentucky Derby are held there annually. Additional flat racing is held at Miles Park in Louisville and harness racing is offered at Louisville Downs. Louisville also has excellent theatrical productions, opera and ballet companies, and an orchestra, as well as art museums. Annual festivals honor historical events and ethnic groups and often feature local crafts and other talents. Also many collegiate and professional sporting events take place.

The Greater Cincinnati area, 55 miles away, offers much in the way of collegiate and professional level spectator sports such as football, baseball, hockey and horse racing. Cincinnati has a world-renowned symphony orchestra, art galleries and museums, theaters which present a variety of dramatic events and ballet and opera companies.

THE LABOR MARKET

POPULATION TRENDS

Area	Population				Percent Change	
	1972*	1970	1960	1950	1960-70	1950-60
Carrollton	N. A.	3,884	3,218	3,226	+20.7	- 0.2
Labor Market Area	37,000	36,386	36,171	38,783	+ 0.6	- 6.7
Carroll County	8,500	8,523	7,978	8,517	+ 6.8	- 6.3
Gallatin County	4,400	4,134	3,867	3,969	+ 6.9	- 2.6
Henry County	11,000	10,910	10,987	11,394	- 0.7	- 3.6
Owen County	7,800	7,470	8,237	9,755	- 9.3	-15.6
Trimble County	5,300	5,349	5,102	5,148	+ 4.8	- 0.9

*Provisional Estimates.

Sources: U. S. Department of Commerce, Bureau of the Census, Census of Population, 1970, 1960, 1950. U. S. Bureau of the Census, Current Population Reports, Series P-26, June 1973.

GENERAL EMPLOYMENT CHARACTERISTICS, 1972

Major Employment Group	Employment	
	Carroll County	Labor Market Area
TOTAL	3,280	11,560
Agricultural	440	3,460
Nonagricultural	2,840	8,100
Manufacturing	1,060	1,708
Government	440	1,650
Trade and Services	561	1,518
Other	779	3,224

Source: Kentucky Department for Human Resources, Bureau for Administration and Operations.

MANUFACTURING EMPLOYMENT TRENDS BY INDUSTRY
SEPTEMBER 1973 AND 1963

Industry	Carroll County			Labor Market Area		
	1973	1963	% Change	1973	1963	% Change
TOTAL	1,161	585	+ 98.5	2,046	902	+126.8
Food & Kindred						
Products	0	17	--	68	78	- 12.8
Tobacco	17	14	+ 21.4	18	17	+ 5.9
Apparel, Textiles,						
Leather	0	0	0	35	196	- 82.1
Lumber, Furniture	96	312	- 69.2	150	346	- 56.6
Printing & Publishing,						
Paper	4	6	- 33.3	21	28	- 25.0
Chemicals, Petroleum						
& Coal, Rubber	494	99	+399.0	525	99	+430.3
Stone, Clay & Glass	20	14	+ 42.9	30	15	+100.0
Primary Metals	168	0	--	203	0	--
Machinery, Metal						
Products, Equip.	362	123	+194.3	442	123	+259.3
Other	0	0	0	554*	0	--

*Included with the leather and leather products industry employment prior to March, 1970.

Source: Kentucky Department for Human Resources, Number of Workers in Manufacturing Industries Covered by Kentucky Unemployment Insurance Law Classified by Industry and County, September 1973, September 1963.

CARROLLTON MANUFACTURING FIRMS,
THEIR PRODUCTS AND EMPLOYMENT

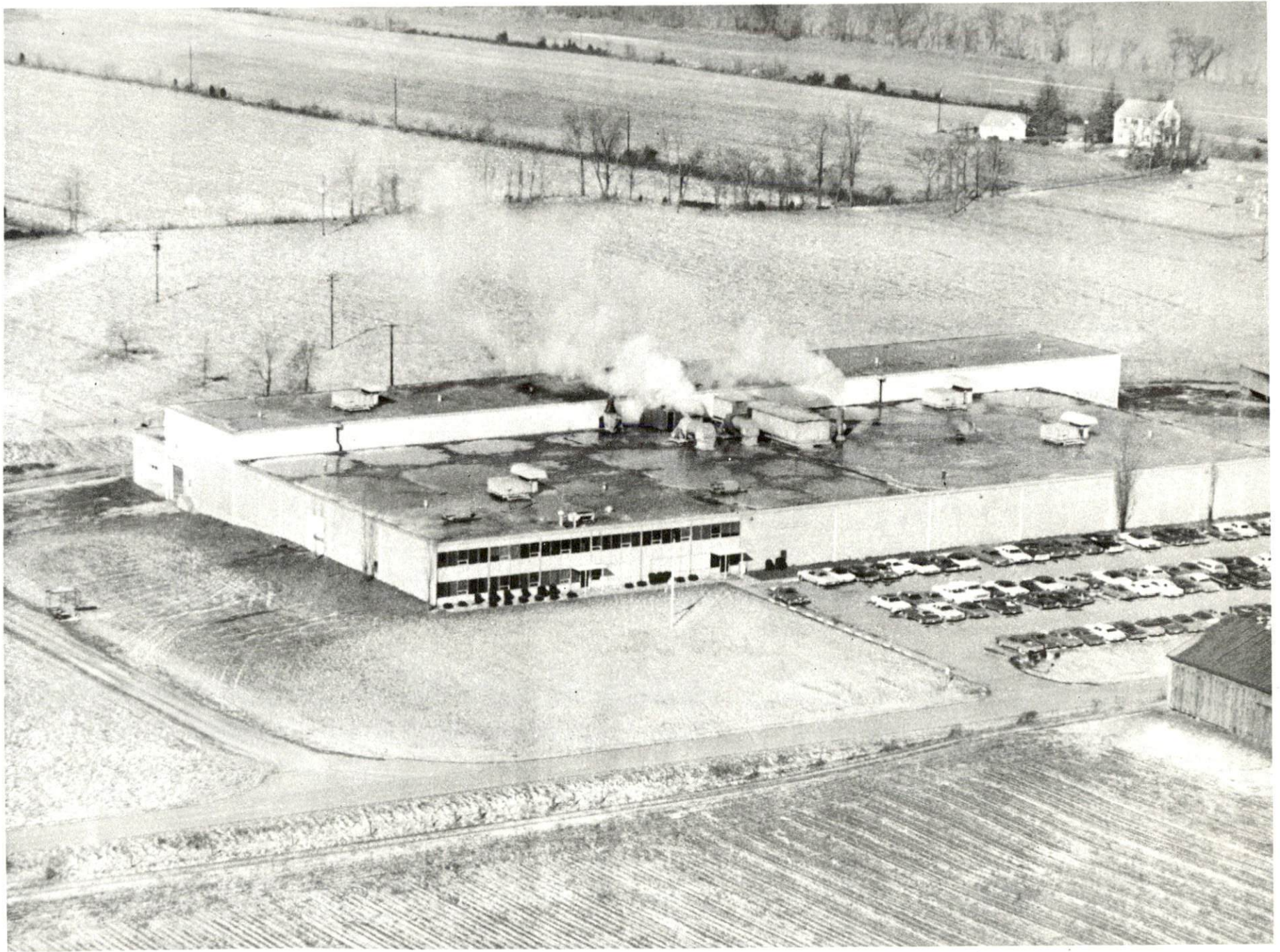
Firm (Establishment Date)	Product	Employment			
		Total	Male	Female	Organized
Butler Furniture Industries (1971)	Wooden chairs, upholstered chairs	70	30	40	
Carrollton Cabinet Co., Inc. (1960)	TV and radio cabinets, wood furniture, upholstered furniture	45	20	25	
Carrollton Division, Dayton-Walther Corporation (1972)	Disc brakes	27	22	5	

(cont'd)

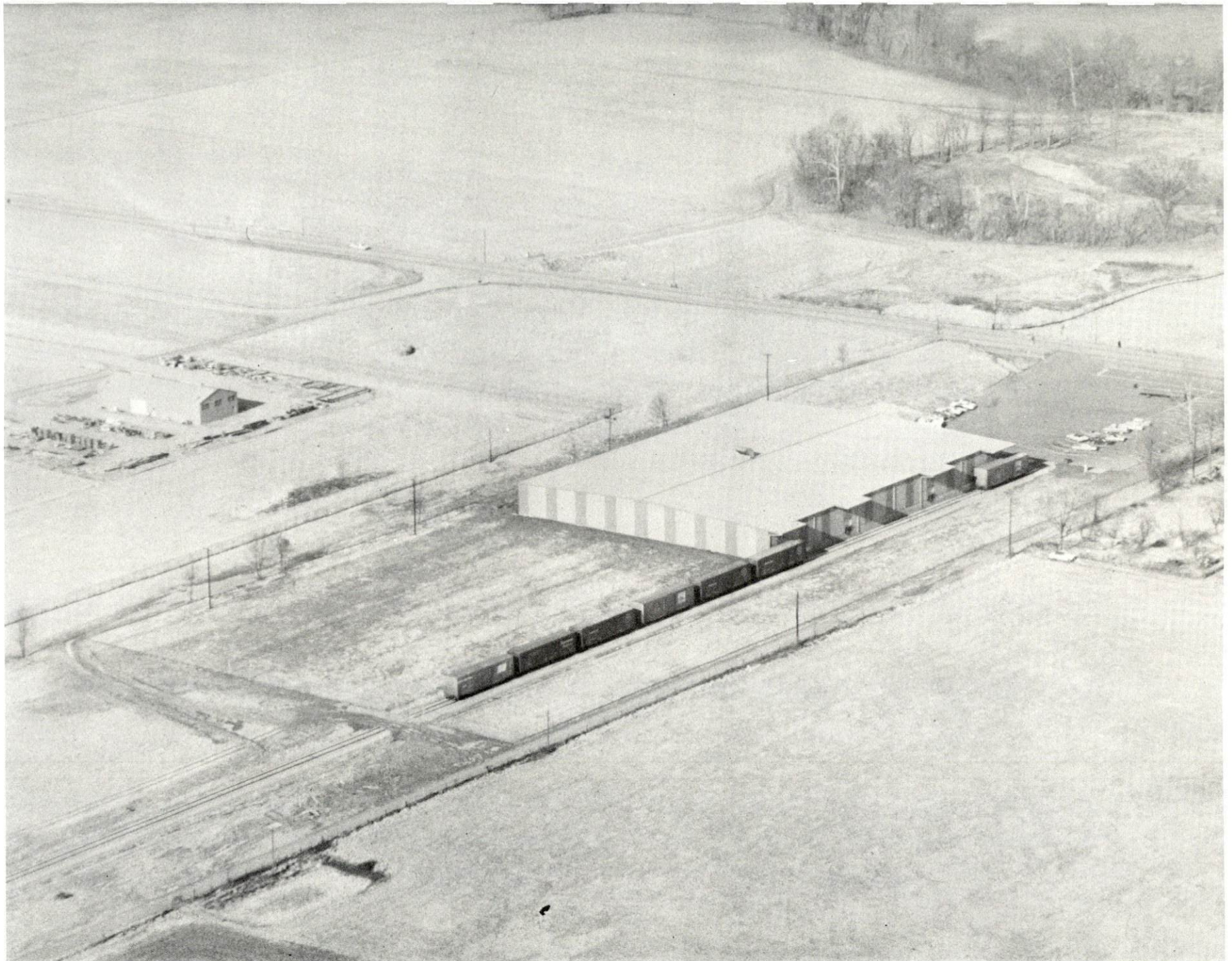
<u>Firm (Establishment Date)</u>	<u>Product</u>	<u>Employment</u>			<u>Organized</u>
		<u>Total</u>	<u>Male</u>	<u>Female</u>	
Carrollton Redrying Company (1946)	Tobacco redrying	32	28	4	
Consolidated Aluminum Corp. (1969)	Aluminum extrusion	160	157	3	*
Coo Par (1949)	Ready mixed concrete	13			
Dow Corning Corp. (1967)	Silicones	104	96	8	
Hills Dairy (1898)	Cheese	3	3	0	
Kawneer Company (1965)	Aluminum appliance trim				
	auto parts	200	110	90	*
M & T Chemicals, Inc. (1958)	Tin organic chemicals coatings	241	230	11	
Moore Woodcraft, Inc. (1971)	Juvenile furniture, tables	5	2	3	
News-Democrat (1867)	Newspaper, job printing	4	2	2	
Ohio Valley Paving Co. (1953)	Asphaltic concrete	3	3	0	
Reinbeau Printing (N/A)	Job printing	5			
Rich Ladder Co. (1945)	Wood ladders	78	65	13	
Teledyne Wirz (1954)	Metal collapsible tubes	134	34	100	*

*See Labor Organizations, page 12.

Source: Kentucky Department of Commerce, 1974 Kentucky Directory of Manufacturers.



KAWNEER COMPANY



CONSOLIDATED ALUMINUM CORPORATION



M & T CHEMICALS, INC.



DOW CORNING CORP.

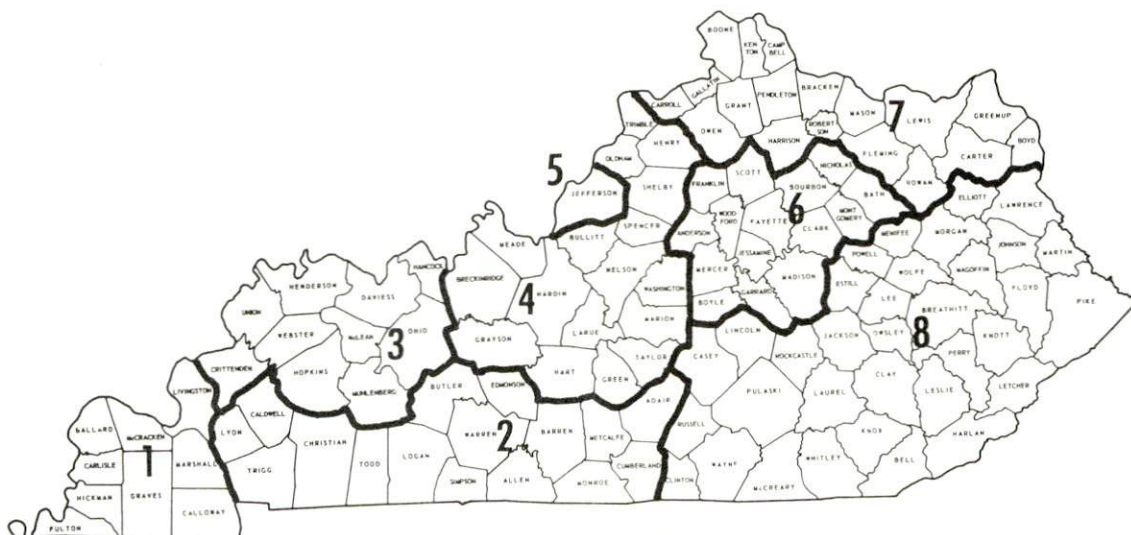


TELEDYNE WIRZ

WAGES

Occupational wage rates for specific industries are usually not available to most government agencies, and wage data furnished to state employment agencies by industrial employers is protected from disclosure by federal law. The most reliable up-to-date wage information can be obtained by direct contact with local employers.

Associated Industries of Kentucky, a voluntary organization of Kentucky businesses, regularly collects occupational wage rates and fringe benefits data from participating member firms. Data is compiled for over 130 clearly defined office, production, and service occupations. Tabulations are published for eight regions of Kentucky, as shown on the map below. It should be noted that the data may be weighted by the preponderance of firms in the larger cities and may be somewhat higher than the rates paid in the smaller communities. Data from these tabulations are available, upon request, from the Kentucky Department of Commerce, Frankfort, Kentucky 40601.



Associated Industries of Kentucky Area Wage Surveys

LABOR ORGANIZATIONS

<u>Union</u>	<u>Representing manufacturing workers at:</u>
United Mine Workers	Teledyne Wirz
United Auto Workers	Kawneer Company
Aluminum Workers International Union	Consolidated Aluminum Corporation

ESTIMATED MALE LABOR SUPPLY
CARROLLTON LABOR MARKET AREA

<u>Area</u>	<u>Current</u>			<u>Future</u>	
	<u>Total</u>	<u>Not in Labor Force</u>	<u>Unemployed</u>	<u>Under- employed</u>	<u>Reaching 18 Yrs. of Age by 1980</u>
Labor Market					
Area	1,430	460	430	540	1,763
Carroll	310	40	170	100	461
Gallatin	260	170	50	40	193
Henry	230	0	90	140	488
Owen	520	250	90	180	337
Trimble	110	0	30	80	284

Sources: Kentucky Department for Human Resources, Kentucky Labor Supply Estimates by County, 1973. Kentucky Department of Commerce, Future Labor Supply by 1980.

ESTIMATED FEMALE LABOR SUPPLY
CARROLLTON LABOR MARKET AREA

<u>Area</u>	<u>Current</u>			<u>Future</u>	
	<u>Total</u>	<u>Not in Labor Force</u>	<u>Unemployed</u>	<u>Under Employed</u>	<u>Reaching 18 Yrs. of Age by 1980</u>
Labor Market					
Area	2,170	1,260	270	640	1,696
Carroll	450	160	120	170	390
Gallatin	380	260	20	100	229
Henry	390	170	50	170	464
Owen	550	350	70	130	342
Trimble	400	320	10	70	271

Sources: Kentucky Department for Human Resources, Kentucky Labor Supply Estimates by County, 1973. Kentucky Department of Commerce, Future Labor Supply by 1980.

PER CAPITA PERSONAL INCOME

<u>Area</u>	<u>1971</u>	<u>1961</u>	<u>% Change</u>
Carroll County	\$2,902	\$1,538	+88.7
Labor Market Area Range	\$2,456 - 2,905	\$951 - 1,538	N.A.
Kentucky	3,310	1,677	+97.3
U. S.	4,164	2,265	+83.8

Sources: University of Kentucky, Office of Development Services and Business Research, Per Capita Income in Kentucky, U. S. Department of Commerce, Bureau of Economic Analysis, Survey of Current Business, August, 1973.

TRANSPORTATION

Rail

Line serving Carrollton - Carrollton Railroad (a subsidiary of the Louisville & Nashville Railroad)

Services - Freight, team tracks, siding and switching

Freight extends from the main line of the L & N at Worthville into Carrollton and up to the Kentucky Power Company servicing industries along the route. Interconnection with L & N is made at Worthville once daily, northbound and southbound. Piggyback facilities are available in Cincinnati, Ohio and Louisville, Kentucky, 55 and 50 miles from Carrollton, respectively.

For details on routing, schedules, rates, and services, contact:

Carrollton Railroad Company
5th Street
Carrollton, Kentucky 41008

and/or

Manager of Industrial Development
Louisville & Nashville Railroad Co.
908 West Broadway
Louisville, Kentucky 40203

Truck Service

Company

Home Office

E & G Motor Express
Kentucky Truck Lines, Inc.
(Distillery products and supplies only)
Miami Transportation Co., Inc.

Pendleton, Kentucky
P. O. Box 92
Frankfort, Kentucky
1220 Harrison Avenue
Cincinnati, Ohio

O. K. Trucking Company

1810 South Street
Cincinnati, Ohio

O'Nan Transportation Company*

P. O. Box 308
Carrollton, Kentucky

Owenton Express, Inc.

Route 2
Owenton, Kentucky

Smith's Transfer Corporation of
Virginia

P. O. Box 1000
Staunton, Virginia

*Local terminal.

Other Freight ServicesNearest Shipping Center

United Parcel Service

Louisville, 50 miles distant*

*Available to schedule regular pickups or occasional pickups.

HIGHWAY MILES AND TRUCK TRANSIT TIME IN DAYS FROM
CARROLLTON, KENTUCKY, TO SELECTED MARKET CENTERS

City	Highway Miles	Delivery		City	Highway Miles	Delivery	
		Time TL				Time TL	
Atlanta, Ga.	482	2		Los Angeles, Calif.	2,157	4	
Birmingham, Ala.	416	2		Louisville, Ky.	50	1	
Chicago, Ill.	348	1		Nashville, Tenn.	230	1	
Cincinnati, Ohio	55	1		New Orleans, La.	760	3	
Cleveland, Ohio	299	1		New York, N. Y.	714	3	
Detroit, Mich.	320	1		Pittsburgh, Pa.	339	2	
Knoxville, Tenn.	262	1		St. Louis, Mo.	319	1	

Source: Delivery time only - O'Nan Transportation Company, P. O. Box 308, Carrollton, Kentucky.

AirNearest Commercials

Location: Standiford Field Louisville, Kentucky 50 miles distant	Greater Cincinnati Airport Covington, Kentucky 50 miles distant
Runways: 3 paved Length: 7,800 ft., 5,000 ft., 7,250 ft.	3 paved 9,500 ft., 5,500 ft., 7,800 ft.
Traffic Control: Control tower, approach control, ground control, guards, departure control	Tower, approach and departure control, CVG, ILS System, ground control, guards, instrument approach
Lighting: Runways, obstructions, beacon, approach and touchdown lights, center line on runways	Beacon, runways, approach lights, obstruction lights
Services: TWA, American, Eastern, Delta, Piedmont, Ozark, Allegheny Airlines; 80, 100, 115 octane; jet fuel; storage; major A & E repairs; Hertz, Avis, Budget and National rent-a-car service; restaurant; taxi; city bus service	American, Eastern, TWA, Allegheny, Piedmont, Delta, North Central, Hamilton Airlines; fuel 100/130 or lower, major A & E repairs, storage, weather information, restaurant, flight instruction, car rentals, charter, bus service, taxi, limousine, hotel accommodations

Air Freight

Service: On regular service basis

On regular service basis

Water

Carrollton is located at the confluence of the Ohio and Kentucky Rivers. A nine-foot navigation channel is maintained along the Ohio River. A six-foot navigation channel is maintained along the Kentucky River; while a nine-foot channel from backwater of the Ohio River is maintained for almost 5 miles.

Although port facilities have not yet been developed, the water transportation potential for Carrollton is excellent.

Bus

Southern Greyhound Bus Line

Taxi

One company, 12-hour service

Rental Services

Car, truck and trailer rentals.

POWER AND FUEL

Electricity

Company serving Carrollton - Kentucky Utilities Company

Source of power - Kentucky Utilities Company

Total generating capacity - 1,735,000 KW

For industrial rates contact:

Kentucky Utilities Company
Industrial Development Department
Lexington, Kentucky

Company serving Carroll County - Owen County RECC; Shelby RECC

Source of power - East Kentucky Power Cooperative

Total generating capacity - 548,000 KW

For industrial rates contact:

Owen County RECC
Owenton, Kentucky 40359

and/or

Shelby RECC
P. O. Box 311
Shelbyville, Kentucky 40065

Natural Gas

Company serving Carrollton - Carrollton Utilities

Source of supply - Texas Gas Transmission Corporation

Size of transmission mains - 36-inch (supplier); 6-inch (distributor)

Distribution mains - 6, 4, 3, and 2 inches

Distribution pressure - 60 to 120 psi

Btu content - 1,006 per cubic foot

Specific gravity - .598

For rates and supplies contact:

Carrollton Utilities
Carrollton, Kentucky

Other Fuels

Propane and butane -

Boonie's Blue Flame, 412 East 2nd
Madison, Indiana
Williams Energy Company, 11 West Market
Warsaw, Kentucky

Fuel oils -

Distillate fuel oil -

Dorten Oil Company (Gulf), Worthville Road
Carrollton, Kentucky
WPB Oil Company (Shell), Worthville Road
Carrollton, Kentucky
Standard Oil Products, 601 Park Avenue
Carrollton, Kentucky
Davis and Craig Marathon Distributor, U. S. 42-E
Ghent, Kentucky

Residual fuel oil - arrangements must be made with the refinery

Low sulphur content coal - Available in Eastern Kentucky

WATER AND SEWERAGE

Water

Company serving Carrollton - Carrollton Utilities

Source - wells

Treatment plant capacity - 600,000 gpd*

Average daily consumption - 450,000 gallons

Peak daily consumption - 550,000 gallons

Type treatment - lime softening, alum, chlorination, fluoridation

Storage capacity - 1,000,000 gallons

Size lines - 12, 10, 8, and 6 inches

Average pressure - 125 psi

Average temperature - 51° F.

MONTHLY WATER RATES FOR WHOLESALE AND INDUSTRIAL CONSUMERS

In Town

First	1,000 gallons	\$2.00 (Minimum)
Next	4,000 gallons	.90 per 1,000 gallons
Next	15,000 gallons	.60 per 1,000 gallons
Next	20,000 gallons	.50 per 1,000 gallons
Next	60,000 gallons	.40 per 1,000 gallons
Next	300,000 gallons	.35 per 1,000 gallons
Next	600,000 gallons	.30 per 1,000 gallons
Next	1,000,000 gallons	.25 per 1,000 gallons

Out of Town

First	1,000 gallons	\$2.75 (Minimum)
Next	4,000 gallons	1.10 per 1,000 gallons
Next	15,000 gallons	.80 per 1,000 gallons
Next	20,000 gallons	.60 per 1,000 gallons
Next	60,000 gallons	.50 per 1,000 gallons
Next	300,000 gallons	.45 per 1,000 gallons
Next	600,000 gallons	.40 per 1,000 gallons
Next	1,000,000 gallons	.25 per 1,000 gallons

*Soon to begin work on increasing the treatment capacity of the water plant to 1,000 gallons per minute. The process should be completed by June 1975.

Name of water district - Carroll County Water District #1
 Area served - Portion of Carroll County east of Kentucky River
 Date when water district began operating - 1965
 Source of raw water - Wells
 Capacity of treatment plant - 280,000 gallons per day*
 Type of treatment - Chlorination
 Average amount of water used in a 24-hour period - 200,000 gallons
 Peak amount of water used in a 24-hour period - 280,000 gallons
 Storage capacity - 222,000 gallons
 Average pressure - 63 psi
 Average temperature - 55° F.
 Size lines - 6 and 4 inches

Rates -	First	1,000 gallons	\$7.00
	Next	9,000 gallons	1.50 per M gallons
	Next	10,000 gallons	1.00 per M gallons
	Next	20,000 gallons	.85 per M gallons
	Next	20,000 gallons	.75 per M gallons
	Next	20,000 gallons	.70 per M gallons
	Next	20,000 gallons	.60 per M gallons
	All over	100,000 gallons	.50 per M gallons

Surface water sources - Ohio and Kentucky Rivers
 Average discharge - Unlimited on Ohio River; Kentucky River at Lock 2 at Lockport, 8,003 cfs (Unadjusted, 46 years, USGS)
 Expected ground water yield - 500 to 1,000 gpm adjacent to Ohio River on northern border; 5 to 50 gpm adjacent to Kentucky River through central part of county and southeastern border; 5 gpm or less over remainder of county

Sewerage

Company serving Carrollton - Carrollton Utilities
 Design capacity - 500,000 gpd
 Average daily flow - 450,000 gallons; Treatment - Primary**
 Type treatment - Settling, clarifier, drying beds
 Treated effluent discharged into - Kentucky River
 Size of sanitary mains - 16, 12, 10, 8, 6 and 4 inches
 Size of storm mains - 36, 24, 16, 10 and 8 inches
 Rates - 120 percent of monthly water bill; Tap-on fee - \$300

*Carroll County Water District #1 plans to increase the capacity of the water treatment plant to 300 gallons per minute. The project should be completed by the end of 1974.

**Engineering plans have been completed for Carrollton Utilities to add secondary treatment to the present treatment process. If the federal grant is approved, the project should be completed by early 1976.

LOCAL GOVERNMENT

City

Structure - Mayor - 4-year term; 6 councilmen - 2-year terms

Budget 1973-74 - General Fund	\$227,843
Water and Sewer Fund	238,795
City Gas System	825,000

Fees and licenses - Occupational fees range from \$5 to \$150 annually;
city vehicle stickers - \$7.50

County

Structure - County Judge - 4-year term; 3 magistrates - 4-year terms

Budget 1973-74 - General Fund -	\$118,075
Road Fund	56,800

Assessed Value of Property, 1973

<u>Classes of Property</u>	<u>Carrollton</u>	<u>Carroll County</u>
Real Estate	\$19,659,034	\$50,967,029
Tangibles	5,366,492	35,947,964
Public Service	2,421,776	27,947,354 (1972)

Property Taxes

Land and buildings are taxed by the state and may be taxed by local jurisdictions. The state rate is \$0.015 per \$100 of assessed valuation.

Tangible personal property owned by manufacturers (automobiles, trucks, finished goods, office furniture, office equipment) is taxed by the state at \$0.15 per \$100 and may be taxed by local jurisdictions.

Manufacturing machinery, raw materials inventories, and goods in process inventories are not subject to local taxation. The state rate is \$0.15 per \$100.

Property stored in public warehouses is not subject to local taxation. The state rate is only \$0.015 per \$100.

All property is assessed at 100 percent of fair cash value.

Local Property Tax Rate Per \$100 of Assessed Valuation, 1973*

<u>Taxing Jurisdiction</u>	<u>Carrollton</u>	<u>Carroll County</u>
County	\$.260	\$.260
School	.669	.669
City	.285	

Special (not county-wide): \$.020 Fire Protection

Utilities Gross Receipts Tax for Schools

Carroll County levies a 3 percent tax on utilities receipts for schools. This tax is paid by all consumers of utilities. Exempted are receipts from utilities services that are resold and the receipts from the sale of energy or energy producing fuels that exceed 3 percent of the cost of production in manufacturing, processing, mining or refining.

Planning and Zoning

Joint agency - Carrollton City-County Planning Commission

Zoning enforced - City only

Subdivision regulations enforced - Within city limits

Local codes enforced - Housing, building, mobile homes, flood area, salvage yards

Mandatory state codes enforced - Plumbing, National Fire Protection Association Code, National Building Code (for major buildings and

residential construction containing more than 12 bedrooms per building.)

Other programs - Urban renewal, public housing, comprehensive planning program study underway for Carroll County

Safety

<u>Police</u>	<u>Carrollton</u>	<u>Carroll County</u>
Total staff	12	4
Radio-patrol cars	4	3

*Kentucky Department of Revenue, Kentucky Property Tax Rates, 1973.

<u>Fire</u>	<u>Carrollton</u>	<u>Carroll County</u> (Three Districts)
American Insurance Association Fire Rating	6	
Full-time staff	4	
Volunteers	23	81
Equipment:		
1,000 gpm pumper	1*	
750 gpm pumpers	2	1
500 gpm pumpers	1	2
tank trucks with 150 gpm pumpers		2

Rescue Service

Carroll County Ambulance Service:

Number of volunteers - 25

Equipment - Three fully-equipped ambulances with backboards, stretchers, air and bar splints, resuscitator, and wrecking bars

Personnel training - Eight hours standard Multi Media First Aid, advanced first aid, 82 hours of EMT required for each member

Sanitation

	<u>Carrollton</u>	<u>Carroll County</u>
Type service	private	private
Fee charged:		
residential	\$3 monthly	contract
business	\$3 to \$55 monthly according to frequency and amount	contract
Collection frequency:		
residential	once weekly	when desired
business	bi-monthly, weekly, or daily as requested	when desired
Trash pickup		when desired
Disposal method	sanitary landfill	sanitary landfill

*To be delivered October, 1974.

EDUCATION

Public Schools

	<u>Carroll County</u>
Total Enrollment (Fall 1973)	1,961
Elementary	851
Middle School	541
High School	569
Student-Teacher Ratio	23 - 1
Elementary	21 - 1
Middle School	30 - 1
High School	22 - 1
Accreditation	Southern Association of Colleges and Schools
Percent High School Graduates to College	26.4
Expenditures Per Pupil (1972-73)	\$617.65
Bonded Indebtedness, June 30, 1973	\$4,473,000*

Vocational Schools

	<u>Nearest Area Education Center</u>
Location	Carroll County Area Vocational Education Center Carrollton
Curriculum	Clerical Secretarial Air Conditioning and Refrigeration Auto Mechanics Carpentry Electricity Welding

*Includes \$790,000 Advance Refunding Issues.

Nearest State Vocational Schools

	Northern Kentucky State Vocational-Technical School	Jefferson County State Vocational-Technical School
Location	Covington	Jeffersontown
Miles Distant	53 miles	54 miles
Curriculum	Data Processing Clerical Secretarial Marketing and Distributive Education Practical Nursing Child Care Clothing Service Food Service Learning Lab Electronics (Technology) Air Conditioning and Refrigeration Auto Body Repair Auto Mechanics Carpentry Commercial Art Commercial Foods Cosmetology Drafting Machine Shop Printing Radio and TV Repair Welding	Mechanics Horticulture Data Processing Clerical Secretarial Marketing and Distributive Education Dental Assistant Practical Nursing Learning Lab Electronics (Communications) Air Conditioning and Refrigeration Auto Body Repair Auto Mechanics Commercial Foods Drafting Machine Shop Office Machines Repair Printing Radio and TV Repair Welding

Arrangements can be made to provide training in the specific production skills required by an industrial plant. Instruction may be conducted either in the vocational school or in the industrial plant, depending upon the desired arrangement and the availability of special equipment.

Colleges and Universities

<u>Name</u>	<u>Area - Within 55 Miles</u>		<u>Highest Degree Conferred</u>
	<u>Location</u>	<u>Enrollment (Fall, 1973)</u>	
Kentucky State University	Frankfort	2,000	Masters
Northern Kentucky State College	Covington	4,758	Baccalaureate
Thomas More College	Ft. Mitchell	1,455	Baccalaureate
Bellarmino College	Louisville	1,306	Baccalaureate
Spalding College	Louisville	1,065	Masters
University of Louisville	Louisville	12,230	Ph. D., M. D., D. M. D., J. D.
Jefferson Community College	Louisville	4,183	Associate
Southwest Campus	Louisville	368	Associate

HEALTH

Hospitals

<u>General Hospital</u>	<u>Location</u>	<u>Beds</u>
Carroll County Memorial Hospital	Carrollton	80

General hospital facilities - Operating room, recovery room, emergency room, X-ray, laboratory, OB section, nursery, blood bank, physical therapy, electrocardiography, cardiac monitors, respiratory therapy, and skilled nurse facility for long-term care

Medical staff - 5 doctors, 16 registered nurses, 8 graduate licensed practical nurses.

Nursing Homes

	<u>Number</u>	<u>Beds</u>
Personal care home	1	45

Public Health

Facility - Carroll County Health Department

Staff - Health officer (part-time), 2 nurses, clerk, sanitarian (part-time)

Budget 1973-74 - \$38,675.57

OTHER LOCAL FACILITIES

Communications

Telephone - South Central Bell Telephone Company
Services - Direct dial system

Telegraph - Western Union Telegraph Company
Services - By messenger or by telephone

Postal - U. S. Post Office
Class - First
Mail received - Twice daily
Mail dispatched - Twice daily

Newspapers - Carrollton News-Democrat
Weekly and circulation - 3,550
Other papers received from - Louisville, Kentucky; Cincinnati, Ohio;
Madison, Indiana

Radio - WVCM-FM
Stations received from - Louisville and Lexington, Kentucky; Cincinnati,
Ohio; Indianapolis and Madison, Indiana

Television -
Cable service
Reception from - Louisville and Lexington, Kentucky; Cincinnati, Ohio;
Indianapolis, Indiana
Kentucky Educational Television - Channel 52, Owenton transmitter

Library Services

Public library - Carroll County Public Library*
Size collection - Approximately 4,000 volumes (many will be added after
August 1, 1974)
Circulation, 1973- 12,774 volumes
Services - Story hour, magazines, records, films, film projector, various
other materials added as a result of the new demonstration library

*The Carroll County Public Library is in the process of moving to a re-
modeled building. Federal funds have been made available to set up a
demonstration library. The Kentucky Department of Libraries will supply
new materials periodically. The new demonstration library will employ
more people and will increase operating hours. Its purpose is to show the
importance of a library to a community.

Religious Institutions

Number of churches - 21

Denominations - Apostolic, Baptist, Calvary Tabernacle, Catholic, Christian, Church of Christ, Latter Day Saints, Methodist, Lutheran, Pilgrim Holiness, Pentecostal, Presbyterian

Nearest synagogues - 16 (orthodox, reform, traditional and conservative)

Financial Institutions

<u>Banks</u>	<u>Statement as of December 31, 1973</u>	
	<u>Assets</u>	<u>Deposits</u>
First National Bank	\$10,104,298.05	\$9,169,417.62
Kentucky State Bank	8,076,109.04	7,309,292.31
<u>Savings and Loan Associations</u>	<u>Assets</u>	<u>Shared Accounts</u>
Carrollton Federal Savings and Loan Association	\$ 6,074,997.00	\$5,332,586.00

Hotels and Motels

Total number - 6

Units - 205

Clubs and Organizations

Business and Civic - Carrollton-Carroll County Chamber of Commerce, Carroll County Industrial Development Foundation, Jaycees, Carroll County Safety Council, Rotary, Business and Professional Women's Club, Kiwanis, Port William Historical Society

Fraternal - American Legion, Masonic, IOOF, DAV, VFW, Moose

Women's - Homemakers, Garden Club, Woman's Club, Younger Woman's Club, Eastern Star, IOOF Auxiliary

Youth - Girl Scouts, Boy Scouts, Cub Scouts, Brownies, 4-H Club, FHA, FFA, Key Club, Beta Club, Science Club, Art Club, Drama Club, Conservation Club, Little League, Carroll County Youth Council

RECREATION

Local

Public Recreation Facilities

Supervised programs - Carrollton Recreation Department, General Butler State Park, and local churches

Park - 1

Playgrounds - 6

Swimming pool - 1 (Butler Park)

Golf course - 1 (9-hole, Butler Park)

Tennis courts - 2

Baseball diamond - 1

Football field - 1

Other - boat docks, boat launching facilities

Private Recreation Facilities

Movie theater - 1 (indoor)

Other - boat docks

Tourist Attractions

Numerous historic homes open to the public or by appointment;

General Butler home and museum - General Butler State Resort Park; ferry boat across the Ohio at Ghent

Area (within 60 miles)

General Butler State Resort Park

Big Bone Lick State Park

Louisville, Kentucky, and Cincinnati, Ohio, offer a variety of recreation, entertainment, cultural and sporting events

AGRICULTURE - NATURAL RESOURCES - CLIMATE

Agriculture*

	<u>Carroll County</u>	<u>Labor Market Area</u>
Total land area (acres)	83,392	650,304
Percent of area in farm land	77.9	83.4
Number of farms	485	3,811
Average size of farms (acres)	133.8	142.3
1969 value of all farm products	\$3,244,992	\$27,552,211
Value per farm	6,690	7,229
Total crop sales	2,216,613	16,429,567
Total livestock & livestock products	1,013,674	11,071,836
1972 agricultural production included:		
Burley tobacco (lbs.)	3,702,000	26,265,000
Corn (bu.)	136,000	1,435,800
Cattle and calves (number)	10,800	89,400
Hogs and pigs (number)	1,600	20,900
Milk production, 1971 (lbs.)	9,360,000	120,420,000

Natural Resources

Mineral resources	Sand and gravel
Acres of commercial forest land	26,100
Most abundant tree species	White oak, hickory, red oak, ash, hard maple, red cedar, black walnut

*U. S. Department of Commerce, Bureau of the Census, Census of Agriculture, 1969. U. S. Department of Agriculture and Kentucky Department of Agriculture, Kentucky Agricultural Statistics, 1972.

Climate*

Carroll County

Temperature

Annual mean (30-year record)	55.7 degrees
Average annual 1972	55.9 degrees
Record highest, July, 1966** (12-year record)	101.0 degrees
Record lowest, January, 1963 (12-year record)	-20.0 degrees
Normal heating degree days (30-year record)	4,660
(Heating degree day totals are the sums of negative departures of average daily temperatures from 65° F.)	

Precipitation

Mean annual total (30-year record)	41.32 inches
Mean annual snow and sleet (25-year record)	18.30 inches
Total precipitation 1972	49.38 inches
Mean number days precipitation (.01 inch or more) (25-year record)	123
Average number days thunderstorms (25-year record)	44

Prevailing winds (15-year record) South

*U. S. Department of Commerce, Environmental Science Services
Administration, Climatological Data, 1972. Station of record:
Louisville, Kentucky.

**Also on earlier dates, months, or years.

HISTORY

Carroll County is situated in northcentral Kentucky and covers an area of 130 square miles. Its surface is predominantly hilly, its soil fairly fertile, and timber grows throughout its area. The Ohio River forms the northern boundary of the county, and the Kentucky River flows through the middle of the county. Carrollton, the county seat, is located at the point where the Kentucky River flows into the Ohio River.

The first man to visit the Carroll County area was James McBride, who came down the Ohio River as early as 1754. Some thirty-one years later a settlement was begun on the point at the confluence of the Kentucky and Ohio Rivers, but it was destroyed in an Indian raid. Marauding Indians also forced Captain Ellison, who had built a blockhouse on the same site the next year, to abandon his home. Not until 1789, when General Charles Scott built a third blockhouse and fortified the site was a permanent settlement assured. This blockhouse was occupied until 1792 when the town of Port William (present-day Carrollton) was planned. Port William was incorporated in 1794. In 1838 Carroll County became the eighty-seventh county established in Kentucky; its territory was taken from Gallatin County.

Both Carroll County and Carrollton, the county seat, were named for Charles Carrollton of Carrollton, Maryland. He was a signer of the Declaration of Independence, and out-lived all of the others who affixed their signatures to the document.

Carroll County's population increased from 5,526 in 1850 to a high of 9,825 in 1900. From 1900 the population slowly decreased to 7,978 in 1960, but rose again to 8,523 in 1970.

Since 1963 manufacturing employment has increased by 98.5 percent and in 1972, 2,840 of the county's 3,280 workers were employed in nonagricultural jobs. In 1973, manufacturing provided 1,161 jobs. Major industrial products are metal products and chemicals. Largest among Carrollton's industrial plants are: M & T Chemicals, Incorporated; Kawneer Company, which produces aluminum trim and auto parts; Teledyne Wirz, which makes metal collapsible tubing; and Consolidated Aluminum Corporation, which does aluminum extrusion.

Several important people have lived in Carroll County. General Percival Butler, a member of the family for whom Butler State Park was named, was a Revolutionary War soldier who was with Washington at Valley Forge, and later fought in the Battles of Monmouth and Yorktown. He

migrated to Kentucky in 1792, settled first in present day Jessamine County, then after becoming adjutant-general of the state, moved to the mouth of the Kentucky River in 1796, and helped develop Port William into a thriving Ohio River town.

General William Orlando Butler, son of General Percival Butler, fought in the War of 1812 and in the Mexican War of 1846-48. In 1848, he succeeded General Winfield Scott in the Command of the Army in Mexico until a treaty of peace was signed. He was a losing candidate for the vice-presidency of the United States in 1848.