

1970

Industrial Resources: Christian County - Hopkinsville

Kentucky Library Research Collections
Western Kentucky University, spcol@wku.edu

Follow this and additional works at: https://digitalcommons.wku.edu/christian_cty

 Part of the [Business Administration, Management, and Operations Commons](#), [Growth and Development Commons](#), and the [Infrastructure Commons](#)

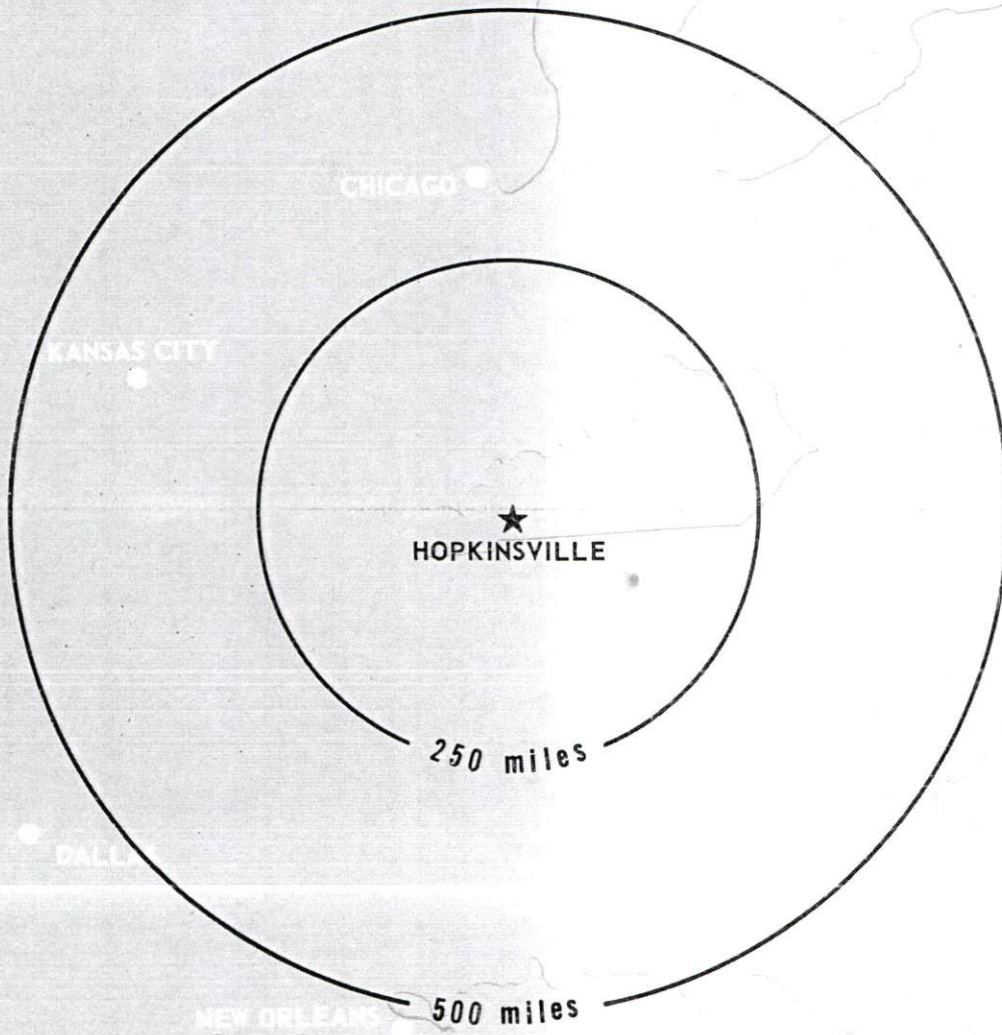
Recommended Citation

Kentucky Library Research Collections, "Industrial Resources: Christian County - Hopkinsville" (1970). *Christian County*. Paper 13.
https://digitalcommons.wku.edu/christian_cty/13

This Report is brought to you for free and open access by TopSCHOLAR®. It has been accepted for inclusion in Christian County by an authorized administrator of TopSCHOLAR®. For more information, please contact topscholar@wku.edu.

INDUSTRIAL RESOURCES

HOPKINSVILLE **KENTUCKY**



HOPKINSVILLE INDUSTRIAL SITES

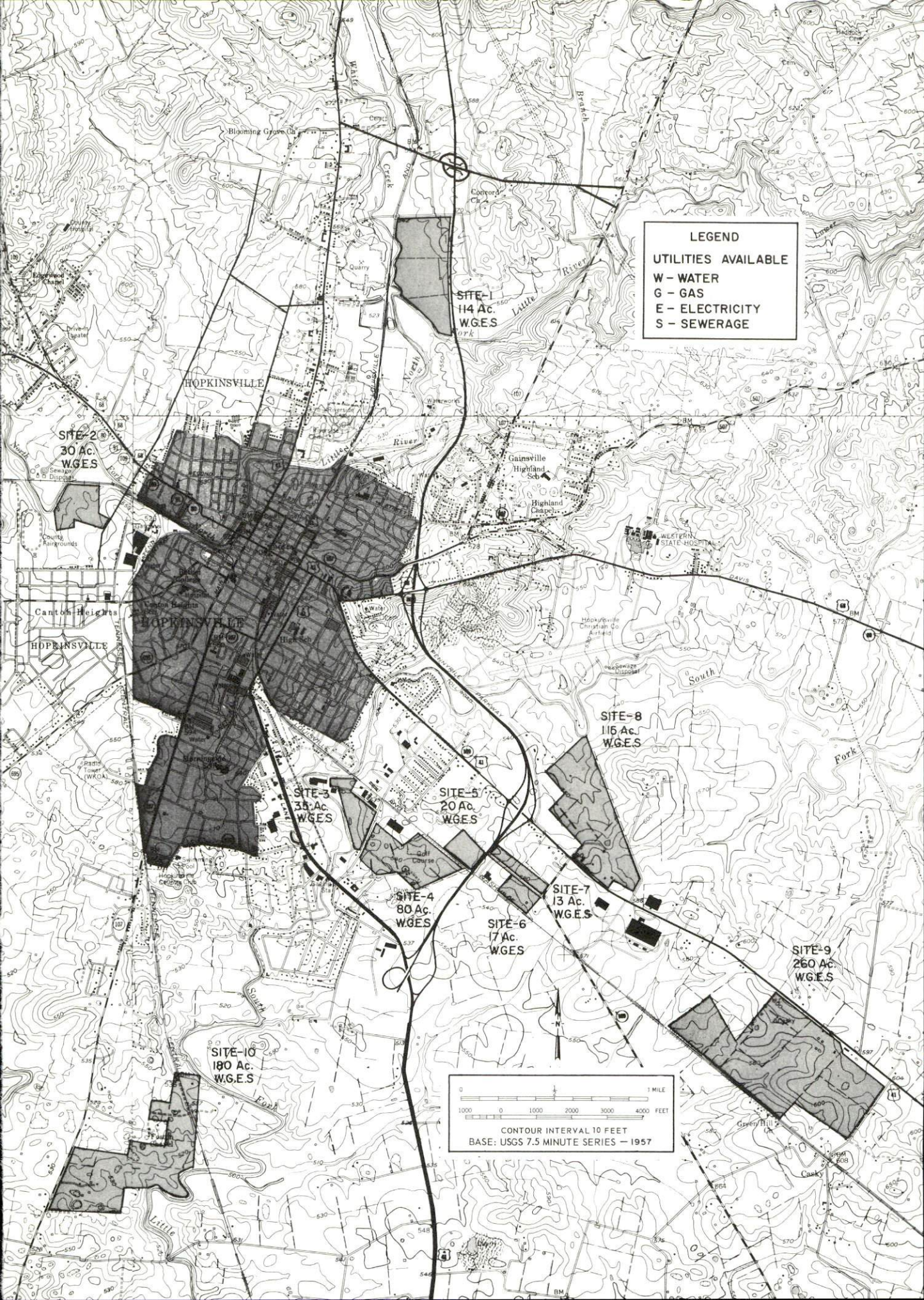
1970

HOPKINSVILLE INDUSTRIAL SITES

1970

For additional site information, contact the Agent, Mr. W. W. Bryan, Executive Director, Hopkinsville Chamber of Commerce, Inc., Hopkinsville, Kentucky; or the Kentucky Department of Commerce.

- SITE #1:** ACREAGE AND TOPOGRAPHY: 114 acres; level to gently rolling
 LOCATION: One-half mile north-northeast of Hopkinsville
 HIGHWAY ACCESS: Just off U.S. 41 near the Pennyryle Parkway
 RAILROADS: Louisville & Nashville Railroad bounds western side of site with 525 feet of track
 WATER: Hopkinsville Sewerage and Water Works Commission; 18-inch line is 2,000 feet from site
 GAS: Western Kentucky Gas Company; 6-inch line is 2,000 feet from site
 ELECTRICITY: Pennyryle RECC
 SEWERAGE: Municipal service; 8-inch line 200 feet from site
 OWNERSHIP: Private
- SITE #2:** ACREAGE AND TOPOGRAPHY: 30 acres; slightly rolling
 LOCATION: West side of Hopkinsville
 ZONING: Industrial
 HIGHWAY ACCESS: On North Drive - Kentucky 380
 RAILROADS: Illinois Central Railroad bounds northern side of site with 830 feet of track
 WATER: Hopkinsville Sewerage and Water Works Commission; 12-inch line at site
 GAS: Western Kentucky Gas Company; 8-inch line in front of site
 ELECTRICITY: Hopkinsville Electric Plant Board
 SEWERAGE: Municipal service; 10-inch line at site
 OWNERSHIP: First City Bank & Trust Company
- SITE #3:** ACREAGE AND TOPOGRAPHY: 35 acres; sloping to gently rolling
 LOCATION: One-quarter mile southeast of Hopkinsville
 ZONING: Industrial
 HIGHWAY ACCESS: On Kentucky 380 between U.S. 41 and U.S. 41-A near the Pennyryle Parkway
 RAILROADS: Louisville & Nashville Railroad bounds northeast side of site with 200 feet of track
 WATER: Hopkinsville Sewerage and Water Works Commission; 12-inch line at site
 GAS: Western Kentucky Gas Company; 8-inch line in front of site
 ELECTRICITY: Hopkinsville Electric Plant Board
 SEWERAGE: Municipal service; 10-inch line at site
 OWNERSHIP: Private
- SITE #4:** ACREAGE AND TOPOGRAPHY: 80 acres; sloping to gently rolling
 LOCATION: Southeast side of Hopkinsville
 ZONING: Industrial
 HIGHWAY ACCESS: On Kentucky 380 between U.S. 41 and U.S. 41-A near the Pennyryle Parkway
 RAILROADS: Louisville & Nashville Railroad bounds northeast side of site with 1,700 feet of track
 WATER: Hopkinsville Sewerage and Water Works Commission; 12-inch line at site
 GAS: Western Kentucky Gas Company; 8-inch line in front of site
 ELECTRICITY: Hopkinsville Electric Plant Board
 SEWERAGE: Municipal service; 10-inch line at site
 OWNERSHIP: Private
- SITE #5:** ACREAGE AND TOPOGRAPHY: 20 acres; level
 LOCATION: One-half mile southeast of Hopkinsville
 ZONING: Industrial
 HIGHWAY ACCESS: Just off Pennyryle Parkway
 RAILROADS: Louisville & Nashville Railroad - site fronts 975 feet of track
 WATER: Hopkinsville Sewerage and Water Works Commission; 12-inch line on site
 GAS: Western Kentucky Gas Company; 8-inch line on site
 ELECTRICITY: Hopkinsville Electric Plant Board
 SEWERAGE: Municipal service; 10-inch line on site
 OWNERSHIP: Private
- SITE #6:** ACREAGE AND TOPOGRAPHY: 17 acres; sloping to gently rolling
 LOCATION: 1 mile southeast of Hopkinsville
 ZONING: Industrial
 HIGHWAY ACCESS: Between U.S. 41 and U.S. 41-A just off the Pennyryle Parkway on Calvin Drive
 RAILROADS: Louisville & Nashville Railroad bounds southwest side of site with 1,050 feet of track
 WATER: Hopkinsville Sewerage and Water Works Commission; 12-inch line at site
 GAS: Western Kentucky Gas Company; 8-inch line in front of site
 ELECTRICITY: Hopkinsville Electric Plant Board
 SEWERAGE: Municipal service; 10-inch line at site
 OWNERSHIP: Private
- SITE #7:** ACREAGE AND TOPOGRAPHY: 13 acres; sloping to gently rolling
 LOCATION: 1 mile southeast of Hopkinsville
 ZONING: Industrial
 HIGHWAY ACCESS: Between U.S. 41 and U.S. 41-A just off the Pennyryle Parkway
 RAILROADS: Louisville & Nashville Railroad is 750 feet from site
 WATER: Hopkinsville Sewerage and Water Works Commission; 12-inch line at site
 GAS: Western Kentucky Gas Company; 8-inch line in front of site
 ELECTRICITY: Hopkinsville Electric Plant Board
 SEWERAGE: Municipal service; 10-inch line at site
 OWNERSHIP: Private
- SITE #8:** ACREAGE AND TOPOGRAPHY: 115 acres; sloping to gently rolling
 LOCATION: 1 mile southeast of Hopkinsville
 ZONING: Industrial
 HIGHWAY ACCESS: At junction of U.S. 41 and the Pennyryle Parkway
 RAILROADS: None
 WATER: Hopkinsville Sewerage and Water Works Commission; 12-inch line at site
 GAS: Western Kentucky Gas Company; 8-inch line in front of site
 ELECTRICITY: Hopkinsville Electric Plant Board or Pennyryle RECC
 SEWERAGE: Municipal service; 10-inch line at site
 OWNERSHIP: The Cherokee Trace Realty, Inc.
- SITE #9:** ACREAGE AND TOPOGRAPHY: 260 acres; sloping to gently rolling
 LOCATION: 1.1 miles southeast of Hopkinsville
 ZONING: Agricultural
 HIGHWAY ACCESS: Fronts on U.S. 41
 RAILROADS: Louisville & Nashville Railroad bounds southwest side of site with 4,100 feet of track
 WATER: Hopkinsville Sewerage and Water Works Commission; 12-inch line 3,000 feet from site
 GAS: Western Kentucky Gas Company; 6-inch line 3,000 feet from site
 ELECTRICITY: Pennyryle RECC
 SEWERAGE: Municipal service; 8-inch line 3,000 feet from site
 OPTIONED BY: Hopkinsville Industrial Development Foundation
- SITE #10:** ACREAGE AND TOPOGRAPHY: 180 acres; gently rolling
 LOCATION: One-quarter mile south of Hopkinsville
 HIGHWAY ACCESS: Kentucky 107 fronts 2,210 feet of west side of site
 RAILROADS: Illinois Central Railroad divides eastern section with 1,900 feet of track.
 WATER: Hopkinsville Sewerage and Water Works Commission; 6-inch line 1,500 feet from site
 GAS: Western Kentucky Gas Company; 4-inch line 1,500 feet from site
 ELECTRICITY: Pennyryle RECC
 SEWERAGE: Municipal service; 8-inch line 1,500 feet from site
 OWNERSHIP: Private



LEGEND

UTILITIES AVAILABLE
W - WATER
G - GAS
E - ELECTRICITY
S - SEWERAGE

SITE-2
30 Ac.
WGES

SITE-1
114 Ac.
WGES

SITE-8
116 Ac.
WGES

SITE-3
35 Ac.
WGES

SITE-5
20 Ac.
WGES

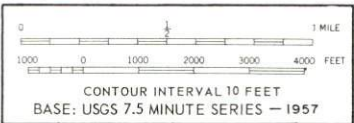
SITE-7
13 Ac.
WGES

SITE-4
80 Ac.
WGES

SITE-6
17 Ac.
WGES

SITE-9
260 Ac.
WGES

SITE-10
180 Ac.
WGES



STATISTICS

Hopkinsville, Kentucky - 1969 - Christian County

Hopkinsville Population (1960 Census)	19,465
(1970 Preliminary Census)	21,076
Christian County Population (1960 Census)	56,904
Payroll in City	\$33,270,340
Bank Deposits	\$75,414,009
Savings and Loan Association, Capital	\$33,635,828
Retail Sales (County) <u>Estimate</u>	\$90,000,000
Postal Revenue	\$513,871
Automobile and Trucks Licensed (County)	26,072
Electric Meters	9,895
Gas Meters	7,137
Telephone Subscribers (County)	14,513
Water Meters	8,552
Number of Households (Christian County)	16,000
Number of Farms	1,500
Average Acreage	220
Average Farm Value	\$60,000
Value of Farm Products Sold	\$18,000,000
City Area-Square Miles	7.1
Acres	4,549
Students Enrolled in All Christian County Schools	
Below College Level (Incl. Ft. Campbell)	13,187
Number of Industrial Employees (County)	3,575
Per Capita Income, Kentucky	\$2,645
Per Capita Income, Christian County (Ranked 2nd in State)	\$3,805

GROWTH

	1965	1966	1967	1968	1969
Bank Deposits	\$54,400,844	\$61,601,400	\$68,714,458	\$72,956,929	\$74,959,550
Savings & Loan Capitol Savings	\$21,573,861	\$24,435,930	\$26,247,160	\$28,813,872	\$30,062,180
Payroll in City	\$25,312,751	\$26,500,000	\$28,446,820	\$31,365,500	\$33,270,340
Retail Sales	\$67,387,000	\$75,000,000	\$81,600,000	\$88,264,000 Std. Rates & Data	\$90,000,000 Est.
Water Meters	7,784	8,137	8,321	8,528	8,552
Gas Meters	6,203	6,350	6,646	6,951	7,137
Electric Meters	9,406	9,598	9,694	9,873	9,895
Telephones (City)	9,100	9,587	10,006	10,466	10,588
Automobiles Licensed	19,660	21,200	23,412	22,426	21,127
Trucks Licensed	4,757	5,000	5,421	6,000	4,945
Enrollment U of K Community College	330	360	413	409	468
House Starts (City Only) Single Family	117	108	188	148	105

AVAILABLE BUILDING

HOPKINSVILLE, KENTUCKY

Street: US 41 South

Dimensions (Overall): 400' x 300'

Total Floor Space: 122,000 Sq. Ft. No. of Floors: 1

Size of Bays: 25' x 50' Acreage Available: 16.3

Type Construction: Concrete and metal walls

Office Space: 2,000 square feet Sprinklered? Optional

Type Roof: Metal Height of Roof: 14' to 26'

Type Floor: 6" reinforced concrete Year Built: 1968

Heating: Optional Vacated when?

Railroad Siding & Capacity: Not on site but 800' across US 41 - See below

Truck Loading Docks: Two - 20' x 75' (at rear of building)

Roadway Access: Four lane US 41 south of Hopkinsville - 1/2 mile to
Pennyrile Parkway

UTILITIES

Electricity: Pennyrile Rural Electric Cooperative Corporation (TVA)

Gas: Western Kentucky Gas Company (4" high pressure line)

Water: Hopkinsville Water & Sewer (Two 12" lines)

Sewer: Hopkinsville Water & Sewer (10" line)

Lease or Purchase Arrangement:

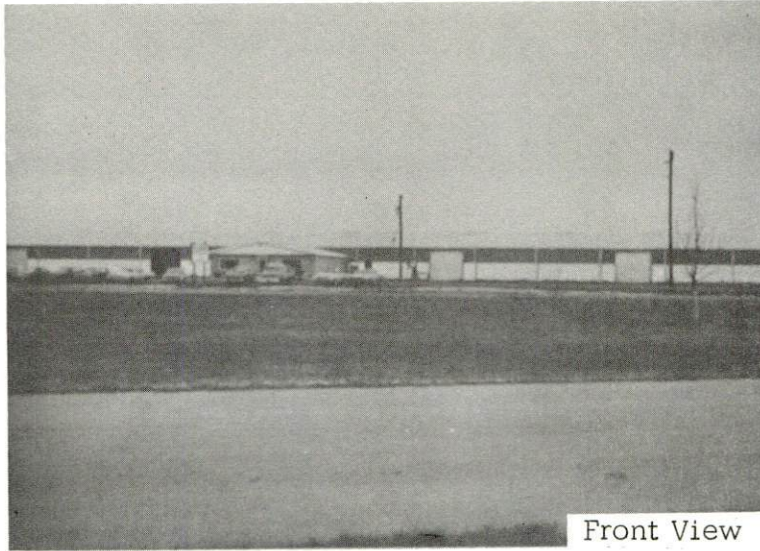
Lease Price: \$75,000 per year Sale Price: \$525,000,

Owner: Mullins-Kentucky, Incorporated; Hopkinsville, Kentucky

Remarks: Extending rail to the building would cost approximately 65¢ per

square foot per year initially. This could be reduced to 14¢ per square

foot per annum if rail use was heavy enough. L & N Railroad will refund
\$5 per car. Everything except that track that comes off lead and goes
into the building is refundable.



Front View

Available Building in Hopkinsville



Side View



Inside View

INDUSTRIAL RESOURCES
HOPKINSVILLE, KENTUCKY

Prepared by
The Kentucky Department of Commerce
in cooperation with
The Hopkinsville Chamber of Commerce

1970

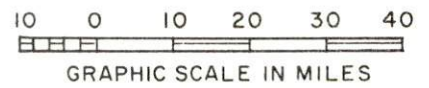
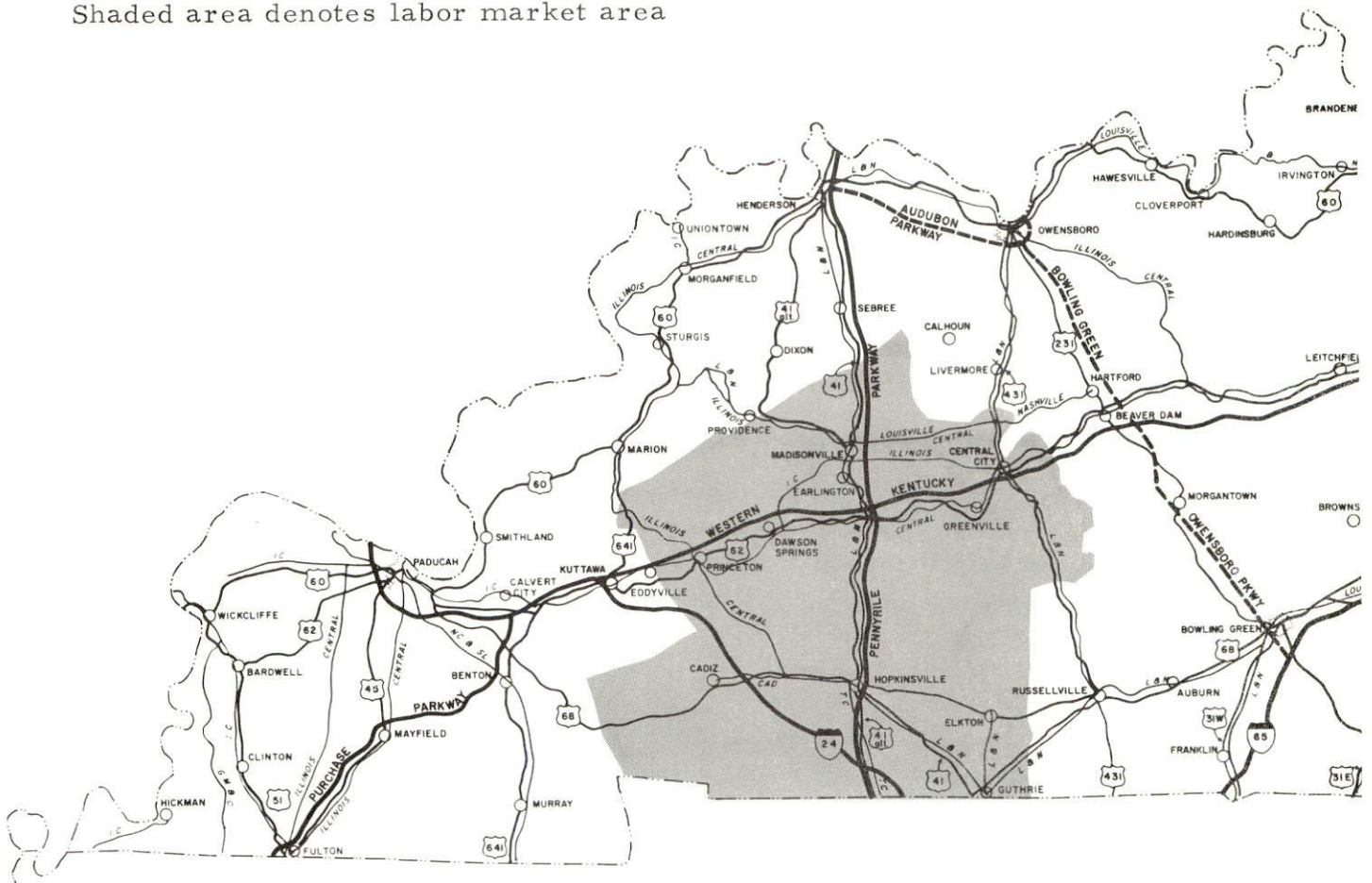
TABLE OF CONTENTS

<u>Chapter</u>	<u>Page</u>
INDUSTRIAL SITES.	i
HOPKINSVILLE, KENTUCKY - A RESOURCE PROFILE	1
THE LABOR MARKET	4
Population Trends	4
General Employment Characteristics, 1969	4
Manufacturing Employment Trends by Industry	4
Major Hopkinsville Manufacturing Firms, Their Products and Employment	5
Wage Rates for Selected Occupations	5
Labor Organizations	7
Current and Future Labor Supply	7
Total Personal Income	8
Per Capita Personal Income	8
EDUCATION.	9
Public Schools.	9
Vocational Schools.	9
Colleges and Universities	10
TRANSPORTATION	13
Rail	13
Truck Service.	13
Air	14
Bus	14
Taxi	14
Rental Services	14
POWER AND FUEL.	15
Electricity	15
Natural Gas.	15
WATER AND SEWERAGE	16
Water	16
Sewerage	16

<u>Chapter</u>	<u>Page</u>
LOCAL GOVERNMENT	17
City	17
County	17
Assessed Value of Property, 1969-70	17
Local General Property Tax Rates Per \$100 of Assessed Valuation, 1969	17
Planning and Zoning	18
Safety	18
Police	18
Fire	18
Rescue Service	18
Sanitation	18
HEALTH	20
Hospitals.	20
Nursing Homes	20
Public Health.	20
OTHER LOCAL FACILITIES	21
Communications	21
Library Services	21
Religious Institutions	21
Financial Institutions	22
Hotels and Motels	22
Clubs and Organizations	22
RECREATION	25
Local	25
Area.	25
AGRICULTURE - NATURAL RESOURCES - CLIMATE	27
Agriculture	27
Natural Resources	27
Climate	28
HISTORY	29

HOPKINSVILLE LABOR MARKET AREA

Shaded area denotes labor market area



HOPKINSVILLE, KENTUCKY - A RESOURCE PROFILE

Location

Hopkinsville, the county seat of Christian County, is a growing city. Located in the southwest Pennyrile area that borders Tennessee, Christian County is the second largest county in Kentucky - covering over 700 square miles. Hopkinsville is centrally located between both the commercial centers of the south and the midwest. Nashville is 70 miles south; St. Louis is 240 miles northwest; Chicago is 375 miles north; and Cincinnati is 280 miles northeast.

The designation of Hopkinsville as an All-American City was, as early as 1964, a tribute to vigorous city planning. The city continues to be progressive and in tune with the times. In Hopkinsville the unusual beauty of modern architecture is combined with energetic and farsighted leadership to promote growth in an environment of excellent livability.

The Economic Framework

Total employment in Christian County averaged 17,600 in 1969, with manufacturing providing 3,200 jobs, trade and services 4,500 and government 4,000. During the first nine years of the decade manufacturing employment increased by almost 1,150 jobs or over 50 percent. Major industrial products include lighting fixtures, apparel, shoes and magnet wire.

Per capita income in the county in 1968 was \$3,805, or \$1,160 above the Kentucky average and ranked second among the state's 120 counties. In a word, the local economy is prosperous, particularly in relative terms.

Hopkinsville is the hub of a labor market area that includes Christian and its five surrounding Kentucky counties. Area employment in 1969 totaled 52,200 including 8,700 in government and 11,325 in trade and services. Manufacturing furnishes 9,500 jobs. Industrial employment in the area has more than doubled since 1959 with the sharpest gains coming in the apparel, leather and machinery and metal products industries.

Despite recent industrial gains, the area still has a deficit of 5,483 manufacturing jobs when measured against the national industrial employment-population ratio. This indicates an area where the potential for additional manufacturing production is excellent.

Resources for Growth

1. There is a current estimated labor supply of 3,530 men and 4,525 women available for industrial jobs in the labor market area. In addition, approximately 8,260 young men and 8,000 young women will become 18 years of age by 1976 and potentially available for work.

2. The local transportation capability is very good and will be enhanced by the completion of Interstate 24. The Pennyrile Parkway together with U.S. 41-A are considered major highway arteries into the industrial south and midwest. The Western Kentucky Parkway, only a short distance to the north, is an important link to the east and west.

The Hopkinsville-Christian County Airport has a 5,168-foot paved runway capable of accommodating small jets. Commercial air service is available at Outlaw Field only 20 miles away at Clarksville, Tennessee.

The Louisville & Nashville Railroad and the Illinois Central Railroad serve Hopkinsville with a variety of services.

3. Energy - both gas and electricity - is available in large quantity. The local water supply is more than adequate for continued growth.

4. Industrial sites - Hopkinsville has ten industrial sites available with all utilities.

5. Education in Hopkinsville is progressive. The city and county school systems are presently in the process of consolidation. This move is designed to strengthen the educational system and to better facilitate the use of ETV.

Eight senior colleges are within 75 miles of Hopkinsville, with Vanderbilt University 70 miles away. Western Kentucky University and Murray State University are within 65 miles.

The Hopkinsville Community College in Hopkinsville is an extension of the University of Kentucky. Its growing curriculum and its new student center are representative of the progress being made in the county's educational system.

Community Programs for Improvement

Hopkinsville and Christian County have undertaken many and varied improvement programs. The city-county comprehensive educational plan leads the way - both in modern facilities, improved teacher instruction and guidance counselling. This metro system of education - combining the county and city school systems - will be merged officially July 1, 1971. New facilities include an addition to the present Hopkinsville High School

consisting of more science classrooms, industrial shops, agricultural classrooms, an enlargement of the cafeteria and library with a total investment of \$600,000. Instruction in the elementary school improves with the addition of 10 special education teachers and 3 social workers.

Other projects beneficial to the community include the new 40-store Pennyrile Mall, a complete \$140,000 city recreation center, completion of a new regional Mental Health Center, a new student center for the Community College, and completion of 80 units of low-rent housing for the elderly at a cost of 1.5 million dollars.

Recreation, Entertainment and Livability

Hopkinsville's location places it within 55 miles of four of the largest state resort parks. These include:

1. Lake Barkley's 4 1/2 million dollar resort lodge located in Cadiz - 20 miles distant.
2. Kentucky Lake - with the largest amount of shore line of any manmade lake in the world. Located in Gilbertsville, Kentucky Dam Village is 55 miles distant.
3. Kenlake Resort Park, famous for its annual Watkins Cup and Governor's Cup Sailboat Regattas, is located in Hardin - 40 miles from Hopkinsville.
4. Locally, the Pennyrile Forest State Resort Park is surrounded by 15,000 acres of scenic forest setting. A swimming pool, hiking trails, fishing, riding stables, boat rentals, picnicking and sunny beaches are found at Pennyrile Forest.

THE LABOR MARKET

POPULATION TRENDS ^{1/}

Area	Population			Percent Change	
	1970	1960	1950	1960-70	1950-60
Hopkinsville	21,076	19,465	12,526	+ 8.3	+ 55.4
Labor Market Area	151,464	156,460	149,447	- 3.2	+ 4.6
Christian County	55,539	56,904	42,359	- 2.4	+ 34.3
Caldwell County	12,603	13,073	13,199	- 3.6	- 1.0
Hopkins County	37,090	38,458	38,815	- 3.6	- 0.9
Muhlenberg County	27,074	27,791	32,501	- 2.6	- 14.5
Todd County	10,761	11,364	12,890	- 5.3	- 11.8
Trigg County	8,397	8,870	9,683	- 5.3	- 8.4

GENERAL EMPLOYMENT CHARACTERISTICS, 1969 ^{2/}

Major Employment Group	Employment	
	Christian County	Labor Market Area
TOTAL	17,600	52,200
Agricultural	2,100	6,500
Nonagricultural	15,500	45,700
Manufacturing	3,200	8,700
Trade and Services	4,507	11,321
Government	4,000	8,700

MANUFACTURING EMPLOYMENT TRENDS BY INDUSTRY SEPTEMBER 1959 AND 1969 ^{3/}

Industry	Christian County			Labor Market Area		
	1969	1959	% Change	1969	1959	% Change
TOTAL	3,311	2,176	+ 52.2	9,511	4,500	+ 111.4
Food & Kindred Products	142	373	- 61.9	421	567	- 25.7
Apparel, Textiles, Leather	1,093	824	+ 32.6	3,445	1,988	+ 73.3
Lumber & Furniture	108	164	- 34.1	915	799	+ 14.5
Printing, Publishing, Paper	59	46	+ 28.3	131	120	+ 9.2
Chemicals, Petroleum, Coal, Rubber	130	35	- 271.4	361	196	+ 84.2
Primary Metals	474	0		570	19	+ 2900.0
Machinery & Metal Products	1,068	655	+ 63.1	3,389	678	+ 399.9
Other	237	79	+200.0	279	133	+ 109.8

MAJOR HOPKINSVILLE MANUFACTURING FIRMS,
THEIR PRODUCTS AND EMPLOYMENT ^{4/}

Firm	Product	Employment		
		Total	Male	Female
Thomas Industries, Inc.	Lighting fixtures	800	425	375
Phelps Dodge Magnet Wire Corp.	Magnet wire	500 (Est.)		
Hopkinsville Clothing Manufacturing Co.	Men's & boys' jeans	452	98	354
International Shoe Co.	Women's shoes	412	101	311
Southwestern Tobacco Co., Inc.	Tobacco redrying	175	115	60
Mid Continent Spring Co. of Kentucky	Compression torsion springs	171	87	84
Ebonite Co.	Bowling balls	162	150	12
Elk Brand Manufacturing Co., Inc.	Men's & boys' clothing	150	25	125
Phillips Products Co., Inc.	Plastic products	104	60	44
Faultless Caster Co.	Decorative furniture	100	50	50
R. C. Owen Co.	Hardwood flooring & lumber pallets	98	96	2
K-Y Clothing Manufacturing, Inc.	Men's work coveralls	91	10	81
United Shoe Machinery Corp.	Fasteners	65	58	7
Central Tool & Die, Inc.	Machine dies & tools	73	68	5
Hopkinsville Milling Co.	Wheat, flour, corn meal	61	59	2

WAGE RATES FOR SELECTED OCCUPATIONS
HOPKINSVILLE, KENTUCKY ^{5/}

Classification	Wages Per Hour		
	Starting	Maximum	Prevailing
<u>Production Employees</u>			
Assembler	\$1.66	\$2.20	\$1.95
Inspector	2.01	2.72	2.25
Production Laborer	1.60	1.99	1.82
Welder, Arc or Acetylene (Class-A)	1.95	2.60	2.20
<u>Service Employees</u>			
Electrician (Class-A)	\$3.75	\$5.10	\$4.00
Laborer	2.00	3.75	2.50
Machinist	2.60	3.25	3.00
Mechanic Maintenance	2.71	3.46	2.90
Truck Driver, Industrial (Class-A)	2.50	3.59	2.76



Hopkinsville Clothing Company



Moe-Light Division of Thomas Industries

Classification	Starting	Wages Per Hour	
		Maximum	Prevailing
<u>Office Employees</u>			
Bookkeeper	\$1.75	\$2.30	\$2.10
File Clerk	1.65	2.20	1.70
Receptionist	1.65	1.95	1.75
Secretary	1.85	2.30	2.00
Typist	1.65	2.20	1.80

LABOR ORGANIZATIONS

<u>Union</u>	<u>Representing workers at:</u>
Teamsters & International Brotherhood of Electrical Workers	Thomas Industries, Inc.
United Mine Workers of America	International Shoe Co.
International Leather, Plastic and Novelty Workers	Ebonite Company
International Association of Machinist	United Shoe Machinery Corp.
Retail, Wholesale & Depart- ment Store Workers	Hopkinsville Milling Co.

CURRENT AND FUTURE LABOR SUPPLY - CHRISTIAN COUNTY LABOR MARKET AREA

County	Current Labor Supply 1970 ^{6/}			Future Labor Supply by 1976 (Becoming 18 Years of Age) ^{7/}		
	Total	Male	Female	Total	Male	Female
Labor Market Area	8,056	3,529	4,527	16,257	8,263	7,994
Christian	1,695	781	914	6,493	3,327	3,166
Caldwell	793	413	380	1,181	613	568
Hopkins	2,050	799	1,251	3,874	1,966	1,908
Muhlenberg	2,134	789	1,345	2,709	1,377	1,332
Todd	699	413	286	1,122	556	566
Trigg	685	334	351	878	424	454

TOTAL PERSONAL INCOME 8/

Area	1968	1959	% Change
Christian County	\$ 227,428,000	\$ 93,351,000	+143.6
Labor Market Area	451,425,000	224,225,000	+101.3
Kentucky	8,516,000,000	4,655,000,000	+ 82.9

PER CAPITA PERSONAL INCOME 9/

Area	1968	1959	% Change
Christian County	\$ 3,805	\$ 1,600	+137.8
Labor Market Area	\$1,967 to 3,805	\$941 to 1,619	+109.0 to +135.0
Kentucky	2,645	1,552	+ 70.4

EDUCATION

Public Schools

	<u>Hopkinsville</u>	<u>Christian County</u>
Total Enrollment	3,657	6,705
Elementary	2,010	3,715
Middle School	981	1,171
High School	666	1,819
Student-Teacher Ratio	20-1	21-1
Elementary	23-1	18-1
Junior High	20-1	29-1
High School	16-1	22-1
State Rating of High School	Comprehensive	Comprehensive
Other Accreditations	Southern Assoc- iation of Colleges and Schools	Southern Assoc- iation of Colleges and Schools
Percent High School Graduates to College	67.3	45.9
Current Expenditures per Pupil	\$417.73	\$379.73
Bonded Indebtedness, July 1970	\$2,434,000	\$4,211,000

Vocational Schools

	<u>Nearest Area School</u>	<u>Nearest Extension Center</u>
Location	Madisonville	Henderson
Miles Distant	35	
Curriculum	Practical Nursing Surgical Training Distributive Education Industrial Electronics Auto Body Repair Auto Mechanics Carpentry Drafting	Appliance Repair Auto Mechanics Carpentry Drafting Electricity Welding Tool & Die Design General Clerical Secretarial-Steno

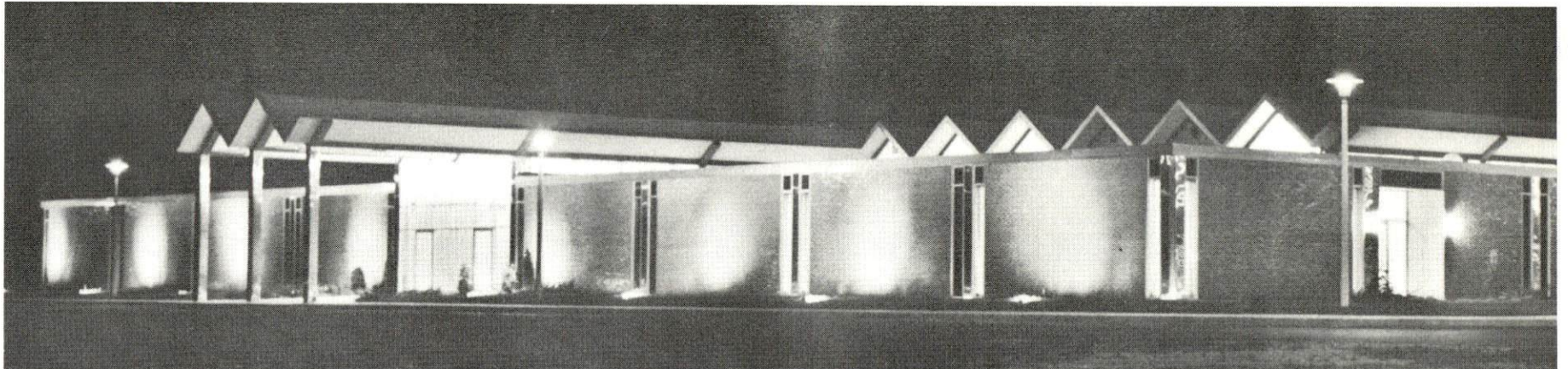
(Contd.)

Nearest Area
School (Cont'd.)

Electricity
Machine Shop
Appliance Repair
Welding
Ward Clerk
Medical Assistant
Health Careers
Nurses Aid

Colleges and Universities

<u>Name</u>	<u>Area - Within 75 Miles</u>		<u>Highest Degree Conferred</u>
	<u>Location</u>	<u>Enrollment</u>	
Western Kentucky University	Bowling Green	11,500	Masters
Murray State University	Murray	7,500	Masters
Kentucky Wesleyan Brescia College	Owensboro	750	Baccalaureate
Hopkinsville Com- munity College	Owensboro	1,000	Baccalaureate
Hopkinsville Com- munity College	Hopkinsville	475	Associate
Madisonville Com- munity College	Madisonville	315	Associate
Henderson Com- munity College	Henderson	650	Associate
Austin Peay St. College	Clarksville, Tenn.	3,500	Masters
Vanderbilt University	Nashville, Tenn.	6,000	Ph. D.
George Peabody College	Nashville, Tenn.	2,100	Ph. D.
Tennessee University	Nashville, Tenn.	4,800	Masters



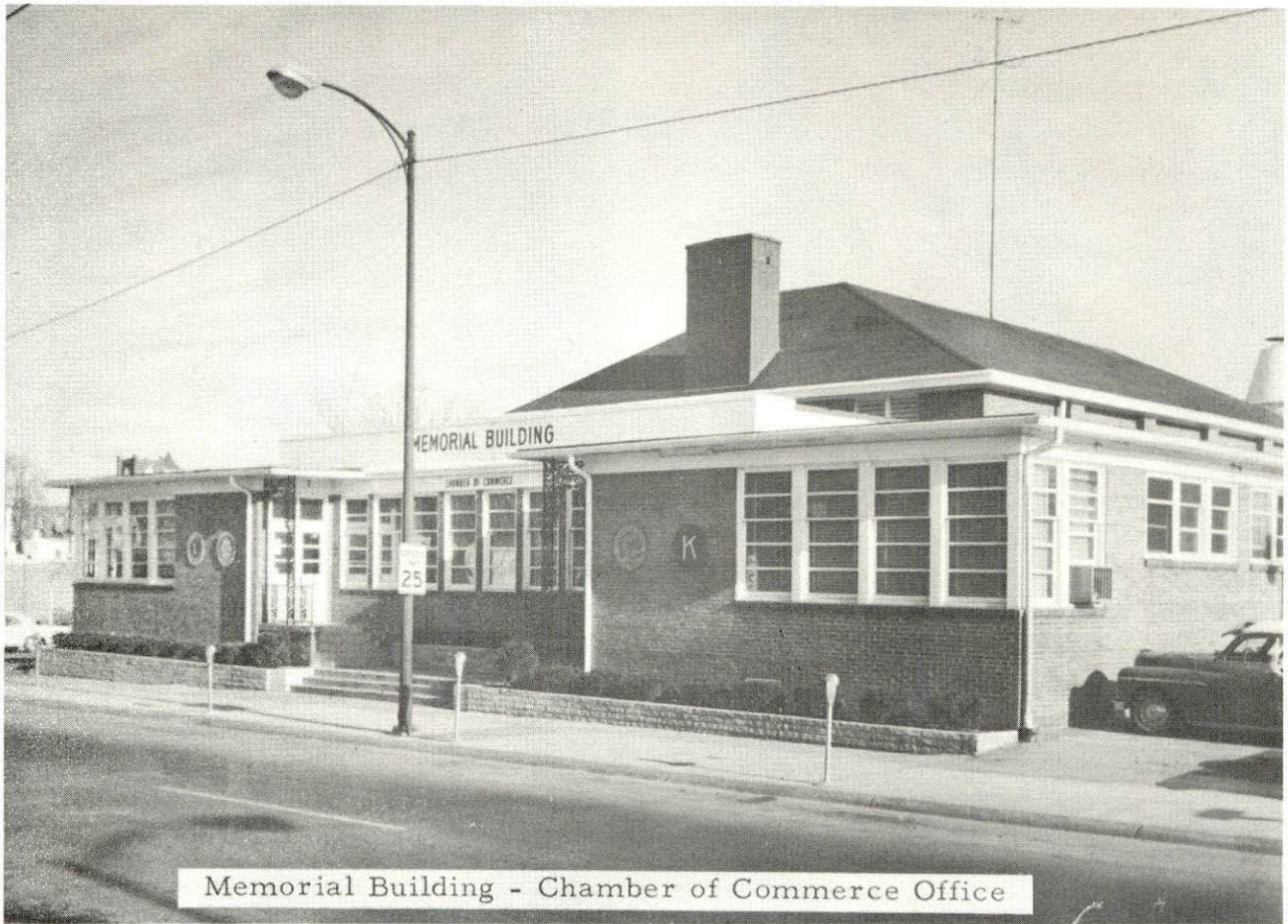
University of Kentucky - Hopkinsville Community College



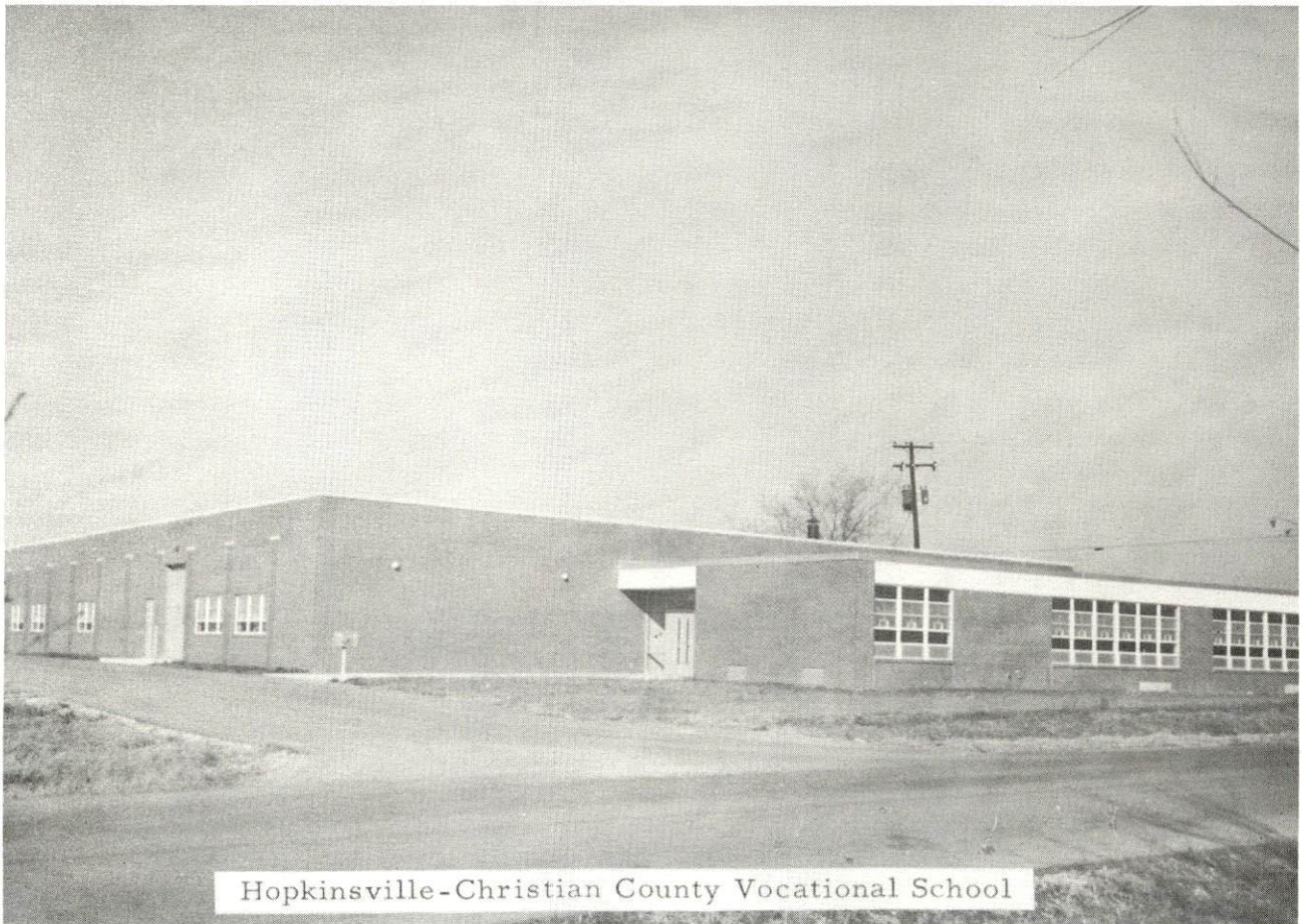
Christian County High School



Hopkinsville High School



Memorial Building - Chamber of Commerce Office



Hopkinsville-Christian County Vocational School

TRANSPORTATION

Rail

Lines serving - Louisville and Nashville Railroad, Illinois Central Railroad

Services - Piggyback, freight, switching, siding space, REA pickup and delivery.

RAILWAY TRANSIT TIME FROM HOPKINSVILLE, KENTUCKY, TO: 10/

City	Miles	No. of Days		City	Miles	No. of Days	
		CL				CL	
Atlanta, Ga.	323	3		Los Angeles, Calif.	172	9	
Birmingham, Ala.	292	2		Louisville, Ky.	1,985	2	
Chicago, Ill.	374	3		Nashville, Tenn.	71	1	
Cincinnati, Ohio	282	3		New Orleans, La.	602	4	
Cleveland, Ohio	526	5		New York, N. Y.	920	6	
Detroit, Mich.	545	6		Pittsburgh, Pa.	580	5	
Knoxville, Tenn.	254	4		St. Louis, Mo.	241	2	

Truck Service

Company

Arnold Ligon Truck Line, Inc.
 Marvin Hayes Lines, Inc.*
 McLean Trucking Co.
 Skaggs Transfer, Inc.*
 T. I. M. E. Freight, Inc.
 Wilson Freight Co.
 United Parcel Service*
 REA*
 Kato Air Freight
 Harper Truck Service, Inc.

Home Office

Lebanon, Kentucky
 Clarksville, Tennessee
 Winston-Salem, North Carolina
 Louisville, Kentucky
 Lubbock, Texas
 Cincinnati, Ohio
 Chicago, Illinois
 Chicago, Illinois
 Elizabethtown, Kentucky
 Paducah, Kentucky

*Terminal - Hopkinsville.

HIGHWAY MILES AND TRUCK TRANSIT TIME IN DAYS FROM
HOPKINSVILLE, KENTUCKY, TO SELECTED MARKET CENTERS

City	Highway Miles	Delivery Time ^{11/}		City	Highway Miles	Delivery Time	
		LTL	TL			LTL	TL
Atlanta, Ga.	323	3	2	Los Angeles, Calif.	1,985	6	5
Birmingham, Ala.	292	2	2	Louisville, Ky.	172	1	1
Chicago, Ill.	374	3	2	Nashville, Tenn.	71	1	1
Cincinnati, Ohio	282	2	2	New Orleans, La.	602	4	3
Cleveland, Ohio	526	3	2	New York, N. Y.	920	5	3
Detroit, Mich.	545	3	2	Pittsburgh, Pa.	580	4	2
Knoxville, Tenn.	254	3	2	St. Louis, Mo.	241	3	2

Air

	<u>Local</u>	<u>Nearest Commercial</u>
	Hopkinsville-Christian County Airport	Outlaw Field - 20 miles south of Hopkinsville
Location:	Hopkinsville (one mile east)	
Runways:	1 paved	2 paved
Length:	5,168 feet	4,100 feet; 5,000 feet
Traffic Control:	Wind sock, lighted wind tee, unicom radio, approach control	Unicom and ADF instrument approach system
Lighting:	Sundown-sunrise, flashing beacon, intermediate runway lighting	Lighted beacon, and runway
Services:	80-100 octane, charter, hangar, tie down, taxi, maintenance service, advanced and primary flight training, National Rent-A-Car	80-87-100-130 octane, National Car Rentals, taxi service, A&E repairs (major), restaurant, teletype, telephone, radio, hangars (storage), tie down, loading ramp, charters, Ozark Airline

Bus

Southern Greyhound Bus Lines
Bowling Green-Hopkinsville Bus Line
West Kentucky Stages

Taxi

24-hour, radio-dispatched service by three cab companies

Rental Services

Car and truck rentals

POWER AND FUEL

Electricity

Company serving Hopkinsville - Electric Plant Board
Source of power - Tennessee Valley Authority
Total generating capacity - 18,202,090 KW
Industrial rates furnished by - Hopkinsville Electric Plant Board,
Hopkinsville, Kentucky

Company serving Christian County - Pennyrile RECC
Source of power - Tennessee Valley Authority
Total generating capacity - 18,202,090 KW
Industrial rates furnished by - Pennyrile RECC, Hopkinsville,
Kentucky

Natural Gas

Company serving - Western Kentucky Gas Company
Source of supply - Texas Gas Transmission Corporation
Size of transmission lines - 6, 8, and 10 inches
Distribution lines - 2, 4, and 6 inches
BTU content - 1,000
Specific gravity - .65
Distribution pressure - 20-50 lbs.
Rates - will be furnished by the Western Kentucky Gas Company,
Hopkinsville office.

WATER AND SEWERAGE

Water

Company serving Hopkinsville - Sewerage and Water Works Commission
Source - 4 impounded lakes
Treatment plant capacity - 5,000,000 gpd
Average daily consumption - 3 1/4 million gallons
Peak daily consumption - 4,000,000 gallons
Type treatment - Flash mix, flocculation, filtration, chlorination
Storage capacity - 2,750,000 gallons
Average pressure - 85 psi
Average temperature - 60°F.
Size mains - 2, 4, 6, 8, 10, 12 and 16 inches

MONTHLY WATER RATES FOR WHOLESALE AND INDUSTRIAL CONSUMERS

First	3,000 cu. ft.	\$.50 per 100 cu. ft.
Next	3,000 cu. ft.	.40 per 100 cu. ft.
Next	3,000 cu. ft.	.30 per 100 cu. ft.
Next	3,000 cu. ft.	.25 per 100 cu. ft.
Next	3,000 cu. ft.	.20 per 100 cu. ft.
All over	15,000 cu. ft.	.16 2/3 per 100 cu. ft.

Surface water sources - North Fork of Little River

Sewerage

Company serving Hopkinsville - Sewerage and Water Works Commission
Design capacity - 3,000,000 gpd
Average daily flow - 2,000,000 gallons
Treatment - Primary and secondary
Type treatment - Grit removal, comminutor, primary settling, fast rate
trickling filter, sludge removal, secondary settling, anaerobic
digestion, and sludge drying beds
Treated effluent discharged into - Little River
Size of sanitary mains - 8, 10, 15, and 21 inches
Size of storm mains - 12 and 24 inches
Rates - 80 percent of monthly water bill

LOCAL GOVERNMENT

City

Structure - Mayor - 4-year term; 12 councilmen - 2-year terms
 Budget 1970-71 - General Fund \$1,100,000; Water and Sewer Fund
 \$990,139

Fees and licenses - Generally based upon gross receipts - \$10 minimum
 for professional license and \$25 minimum for merchants; payroll tax -
 one percent of gross wages.

County

Structure - County judge - 4-year term; 8 magistrates - 4-year terms
 Budget 1970-71 - General Fund \$348,360; Road Fund \$150,300

Assessed Value of Property, 1969-70

<u>Classes of Property*</u>	<u>Hopkinsville</u>	<u>Christian County</u>
Real Estate	\$89,807,407	\$185,505,190
Tangibles	23,222,813	63,198,252
Public Service	8,447,259	19,968,650

Local General Property Tax Rates Per \$100 of Assessed Valuation, 1969 ^{12/}

<u>Taxing Unit**</u>	<u>Hopkinsville</u>	<u>Christian County</u>
State	\$.015	\$.015
County	.135	.135
School	.646	.358
City	.305	
Total	\$ 1.101	\$.508

*Property assessed at 100 percent of fair value.

**Manufacturing machinery, raw materials inventories and goods in
 process inventories are not subject to local tax. State rate is only
 \$0.15 per \$100.

Planning and Zoning

Agency - Hopkinsville-Christian County Planning Commission
Plans completed (city) - Comprehensive Plan, Zoning Ordinance,
Subdivision Regulations, Public Improvements Program, Capital
Improvements Budget, Fringe Area Study, Housing Element Study
Plans completed (county) - Base Studies, Subdivision Regulations and
Zoning Ordinance.
Codes - All major codes are enforced.

Safety

<u>Police</u>	<u>Hopkinsville</u>	<u>Christian County</u>
Total staff	48	5
Radio-patrol cars	6	4

Fire

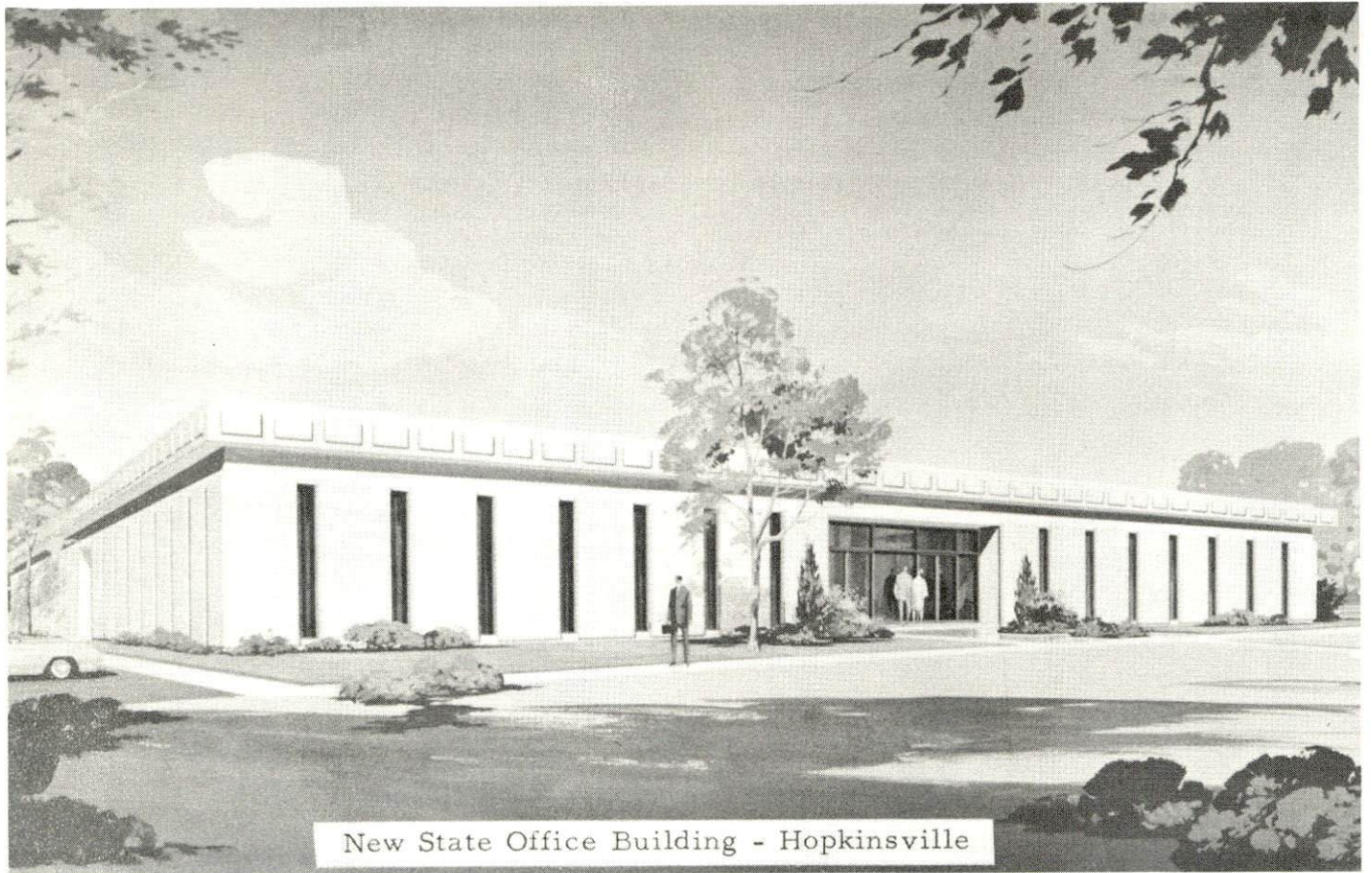
American Insurance	
Association fire rating	3
Full-time staff	43
Equipment:	
1,000-gpm pumpers	3
750-gpm pumpers	2
ladder truck	1 - 85 feet
utility truck	1
hose wagon	1

Rescue Service

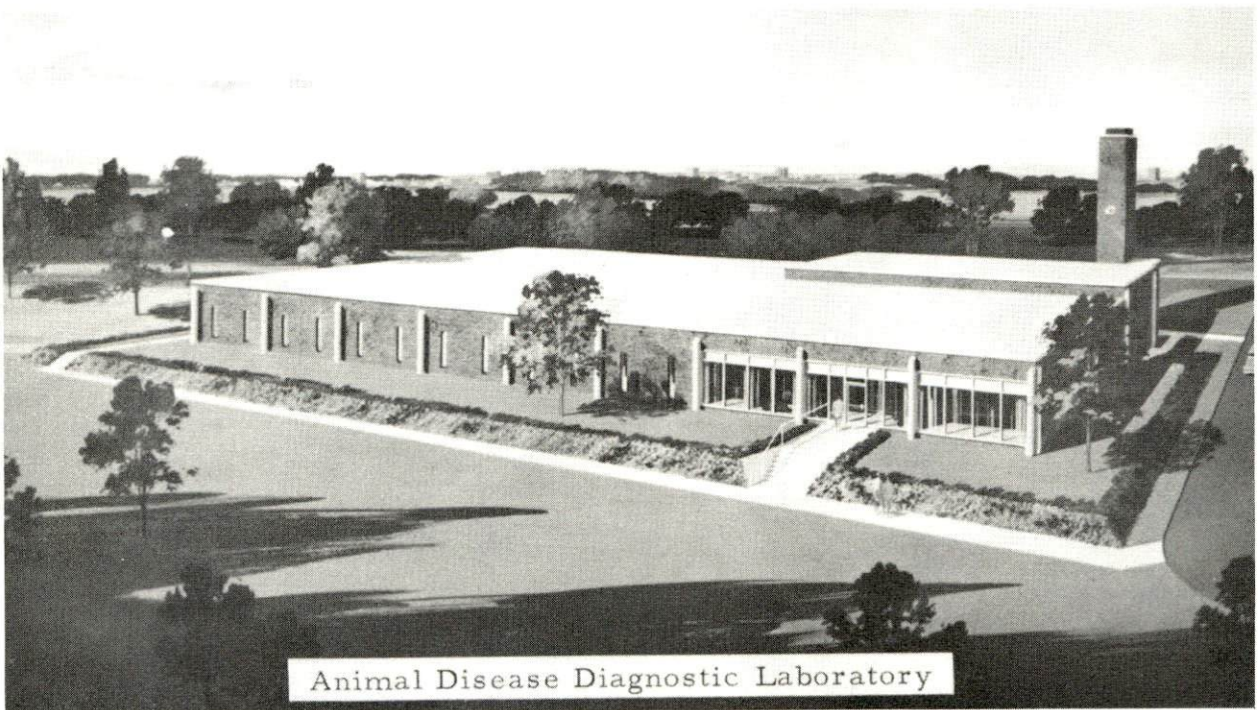
Hopkinsville-Christian County Rescue Squad:
Number of volunteers - 40
Equipment - Ambulance, 2 generators, lake dragging equipment, skin
diving equipment, 8 privately owned boats for use, and 27 radio-
equipped cars (citizen band)
Personnel training - 3 professional scuba divers, 3 assistant divers,
18 men skilled in lake dragging, with most of the personnel trained
in standard first aid, and some with advanced Red Cross training

Sanitation

	<u>Hopkinsville</u>
Type service	municipal
Cost	
residential	\$2.30 per month
business	negotiated
Collection frequency	
residential	once a week
business	daily
Disposal method	sanitary land fill



New State Office Building - Hopkinsville



Animal Disease Diagnostic Laboratory

HEALTH

Hospitals

<u>General Hospital</u>	<u>Location</u>	<u>Beds</u>
Jennie Stuart Hospital	West 17th Street Hopkinsville, Kentucky	175

General hospital facilities - 26 bassinets, 4 operating rooms, coronary care unit, pediatrics, maternity, X-ray, radioisotope, laboratory, pathology, physical therapy, blood bank, intensive care units, pharmacy, and emergency room affiliated with licensed practical nurses school and an AA nursing program with Hopkinsville Community College.

Medical staff - 30 doctors, 52 registered nurses, 42 graduate licensed practical nurses, physical therapist, Ph.D bacteriologist, 4 registered X-ray technicians, 8 registered lab technicians.

Other - The Pennyroyal Mental Health Clinic and the Western State Hospital, also a mental institution, are located in Hopkinsville.

Nursing Homes

	<u>Number</u>	<u>Beds</u>
Extended care homes	2	79
Personal care homes	3	208
Convalescent center	1	58

Public Health

Facility - Christian County Health Department

Staff - 15 full-time employees include: 1 doctor, 5 registered nurses, 1 administrative assistant, 1 health officer, 3 sanitarians, 3 clerks and 1 building supervisor

Budget 1969-70 - \$132,199

OTHER LOCAL FACILITIES

Communications

Telephone - South Central Bell Telephone
Services - Direct dialing, data service PBX (Private Branch Exchange)

Telegraph - Western Union Telegraph
Services - Telex service, message service, money order service,
Commercial News

Postal - First Class U. S. Post Office
Mail received - 7 times daily
Mail dispatched - 7 times daily

Newspapers - The Kentucky New Era
Daily and circulation - 13,000
Other papers received from - Evansville, Indiana; Louisville, Kentucky;
Nashville, Tennessee; and The Wall Street Journal

Radio - WHOP - WKOA
Stations received from - Fort Campbell, Cadiz, Russellville, and
Bowling Green, Kentucky; and Nashville, Tennessee

Television -
Reception from - Louisville, Paducah, and Bowling Green, Kentucky;
Nashville, Tennessee; Evansville, Indiana; and Cape Girardeau,
Missouri
Kentucky Educational Television - Madisonville transmitter, channel
35; Nashville transmitter

Library Services

Public libraries - Hopkinsville Public Library
Size collection - 17,543 volumes
Circulation 1969-70 - 44,787
Services - bookmobile, microfilm, microfilm-reader, framed pictures,
records, film strips, slides, maps and athletic equipment

Religious Institutions

Number of churches - 100
Denominations - Baptist, Church of Christ, Christian, Methodist,
Catholic, Presbyterian, Episcopal, Pentecostal, Christian Science,
Assembly of God, Latter Day Saints, Seventh-Day Adventist, Lutheran,
Church of God, Church of the Nazarene, Jehovah's Witnesses,
Universalist

Financial Institutions

<u>Banks</u>	<u>Statement as of June 30, 1970</u>	
	<u>Assets</u>	<u>Deposits</u>
First City Bank	\$34,576,054.34	\$30,048,117.37
Planters Bank	49,551,716.95	45,365,892.54
<u>Savings and Loan Associations</u>	<u>Assets</u>	<u>Shared Accounts</u>
Hopkinsville Federal	\$22,040,048.17	\$20,156,936.77
First Federal	11,585,780.35	10,325,033.86

Hotels and Motels

<u>Number</u>	<u>Units</u>
17	500

Clubs and Organizations

Business and Civic - Chamber of Commerce, Jaycees, Rotary, Kiwanis, Lions, Optimist, Elks, VFW, Farm Bureau, Pioneers, Inc., Civitan, Western Kentucky State Fair, Pennyriple Area Development Association

Fraternal - Shriners, Masons, Moose, Epsilon Sigma Alpha, IOOF, Ye Ole Timers Club, DAV, Woodsmen of the World

Women's - National Secretaries Association, Altrusa Club, Eastern Star, Rebekahs, B&PW Clubs, Junior Auxiliary, DAR, Homemakers, Garden, AAUW, LWV, Daughters of the Confederacy; Lions, Jaycees, Civitan, Elks, Moose, American Legion, VFW Auxiliaries

Youth - Junior Achievement, Boy Scouts, Girl Scouts, YMCA, Brownies, FFA, FHA, 4-H, FTA, Beta Club, Girl Guards, Sunbeams



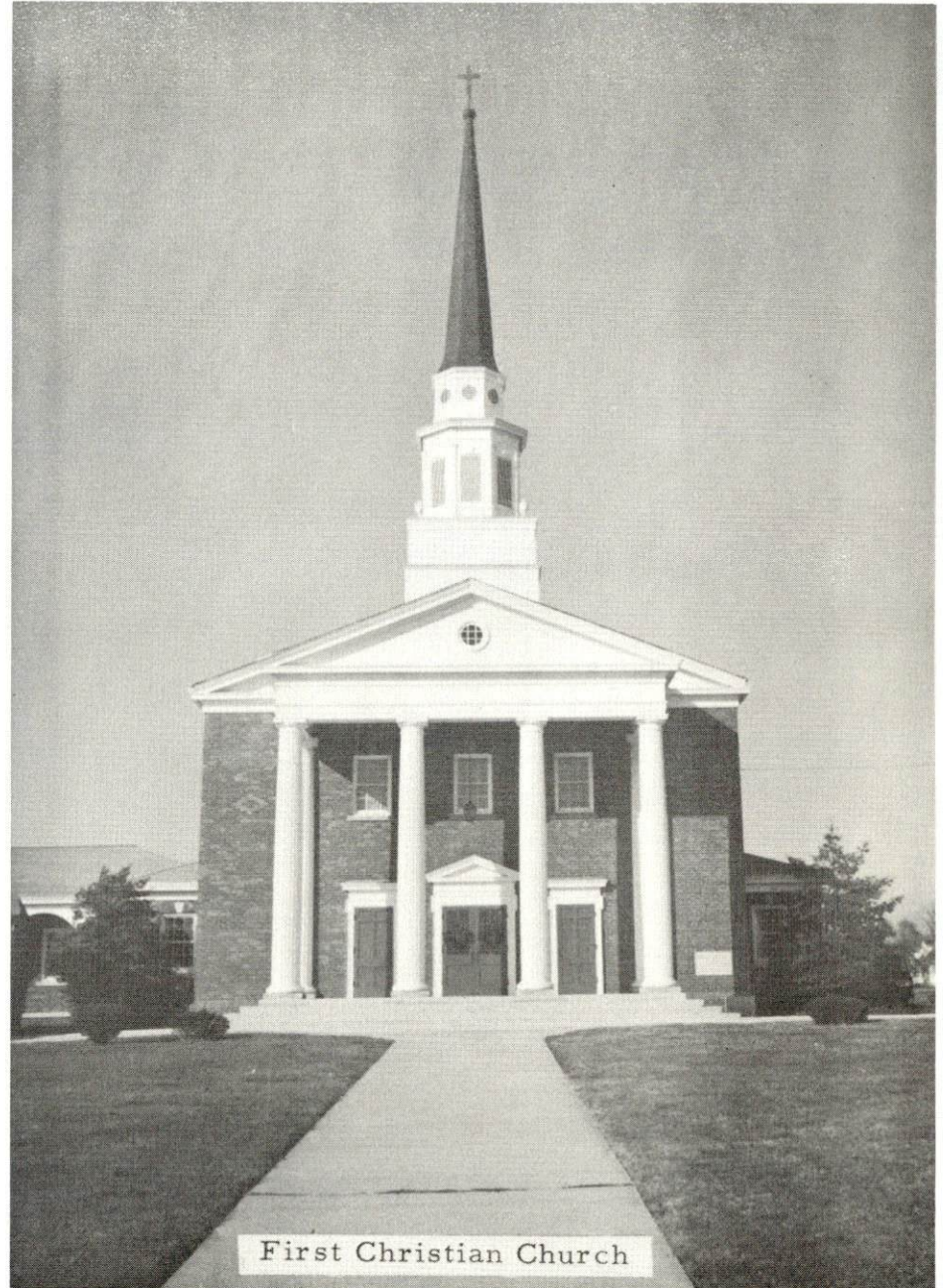
First Baptist Church



First Methodist Church



Church of Christ



First Christian Church

RECREATION

Local

Public Recreation Facilities

Supervised program - 1 full-time director and staff

Park - 1

Playgrounds - 5

Swimming pool - 1

Tennis courts - 5 locations

Baseball diamonds - 5

Football field - Hopkinsville High

Other - Indoor basketball and other recreation facilities are contained in the City Recreation Building

Private Recreation Facilities

Country clubs - 2

Golf courses - 3

Swimming pools - 4

Movie theaters - 4

Bowling lanes - 1

Other - Riding stables, trap shooting

Tourist Attractions

2 dude ranches for the children, The Jefferson Davis Monument State Park, Western Kentucky State Fair

Cultural Events

Community Concert Association, Art Guild exhibitions

Area (Within 50 miles)

Pennyrile Festival of Arts - art exhibits, two concerts, dramatic performance, flower show

Pennyrile Forest and State Resort Park

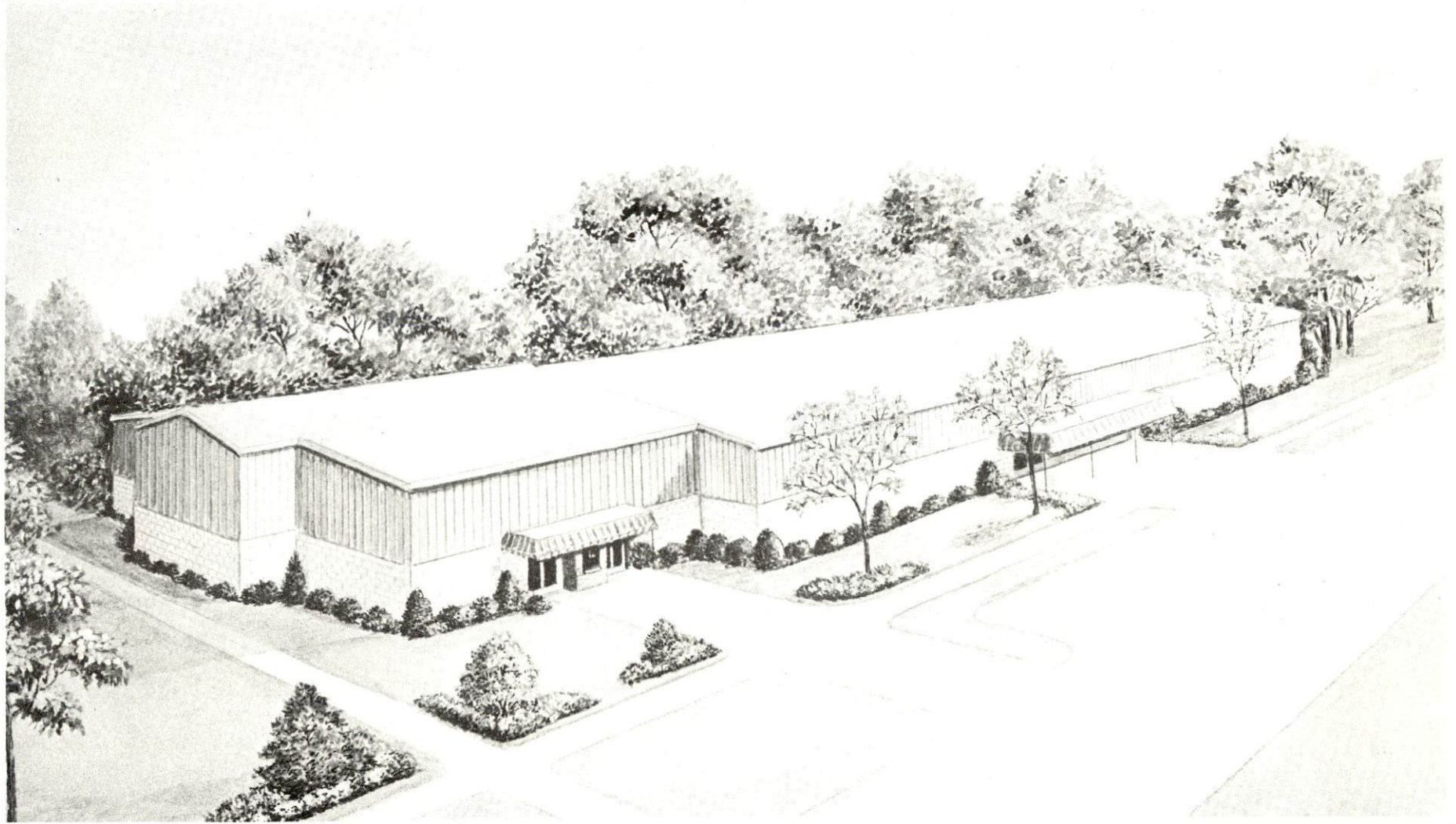
Lake Barkley State Park

Land Between the Lakes National Recreation Area

Lake Barkley

Kentucky Lake

Kenlake State Resort Park



Convention Center and Exhibition Hall
80,000 square foot building

AGRICULTURE - NATURAL RESOURCES - CLIMATE

Agriculture 13/

	<u>Christian County</u>	<u>Labor Market Area</u>
Total land area (acres)	464,000	1,943,680
Percent of area in farm land	73.2	60.1
Number of farms	1,653	6,340
Average size of farms (acres)	205.4	184.1
1964 value of all farm products	\$13,629,902	\$37,769,049
Value per farm	8,245	5,957
Total crop sales	7,736,478	20,394,252
Total livestock & livestock products	5,886,168	17,365,045
1967 agricultural production included:		
Burley tobacco (lbs.)	5,658,000	16,606,000
Corn (bu.)	5,612,000	14,219,000
Cattle and calves (number)	60,300	191,600
Hogs and pigs (number)	43,100	138,400
Milk production (1966) (lbs.)	18,975,000	71,145,000

Natural Resources

Principal mineral resources	Limestone and petroleum
Other mineral resources	Miscellaneous clays
Acres of commercial forest land	129,600
Most abundant tree species	Red oaks, white oaks, hickories, sweetgum, ash, yellow poplar and hard maple

U. S. DEPARTMENT OF COMMERCE, WEATHER BUREAU
 IN COOPERATION WITH KENTUCKY AGRICULTURAL EXPERIMENT STATION
 CLIMATOGRAPHY OF THE UNITED STATES NO. 20 - 15

LATITUDE 36° 51'
 LONGITUDE 87° 30'
 ELEV. (GROUND) 540 Ft.

CLIMATOLOGICAL SUMMARY

STATION HOPKINSVILLE,
 KENTUCKY

MEANS AND EXTREMES FOR PERIOD 1931-1960

Month	Temperature (°F)								** Mean degree days	Precipitation Totals (Inches)						Mean number of days						Month	
	Means			Extremes						Mean	Greatest daily	Year	Snow, Sleet			Precip. .10 inch or more	Temperatures						
	Daily maximum	Daily minimum	Monthly	Record highest	Year	Record lowest	Year	Mean					Maximum monthly	Year	Greatest daily		Year	90° and above	Max.		Min.		
																			32° and below	32° and below	0° and below		0° and below
(a)	30	30	#	30		30		#	#	30		16	¢		¢	1931	30	30	30	30	30		
Jan.	47.1	27.4	37.3	78	1943	-17	1942+	859	5.35	4.47	1951	2.1	10.0	1948	7.0	1951	8	0	4	21	1		Jan.
Feb.	50.2	29.2	39.7	80	1932	-22	1951	708	4.01	4.75	1949	1.9	7.0	1951+	7.0	1951	7	0	2	18	*		Feb.
Mar.	58.3	35.5	46.9	84	1945+	-3	1960	570	5.08	3.80	1935	2.4	25.7	1960	12.0	1960	8	0	1	13	*		Mar.
Apr.	69.7	46.0	57.8	89	1960+	22	1950	228	4.08	3.37	1942	T	T	1936	T	1936	8	0	*	3	0		Apr.
May	78.6	54.8	66.7	97	1937	31	1954	65	4.21	3.86	1953	0	0				7	2	0	*	0		May
June	87.2	63.4	75.3	105	1954+	40	1956	0	4.11	4.22	1960	0	0				6	12	0	0	0		June
July	90.4	66.6	78.5	110	1936	45	1947	0	3.93	4.13	1933	0	0				6	19	0	0	0		July
Aug.	89.9	65.5	77.7	108	1954	41	1946	0	3.43	2.93	1949	0	0				6	17	0	0	0		Aug.
Sept.	84.2	58.1	71.2	104	1954+	34	1942	39	3.00	2.85	1954	0	0				5	9	0	0	0		Sept.
Oct.	73.5	46.5	60.0	98	1953	21	1952	198	2.42	2.55	1947	0	0				5	1	*	2	0		Oct.
Nov.	58.6	35.1	46.9	85	1950	-4	1950	543	3.90	4.07	1948	.6	3.0	1950	3.0	1950	6	0	*	14	*		Nov.
Dec.	48.7	28.9	38.8	78	1951	-5	1960+	812	4.00	3.32	1931	.5	5.3	1935	4.0	1945	6	0	2	20	*		Dec.
Year	69.7	46.4	58.1	110	July 1936	-22	Feb. 1951	4022	47.52	4.75	Feb. 1949	7.5	25.7	Mar. 1960	12.0	Mar. 1960	78	60	9	91	1		Year

(a) Average length of record, years.

T Trace, an amount too small to measure.

** Base 65°F Climatography of the United States No. 83-13, Kentucky.

+ Also on earlier dates, months, or years.

* Less than one half.

¢ Data from 16 complete years and 13 years with values one or more months missing.

Official Normals, based on 1931-60 data.

HISTORY

Christian County dates from 1796. It is the second largest county in Kentucky and contains 726 square miles. Its southern part is level to gently rolling, while the northern area is broken and hilly. The soil is fertile, especially in the southern section, and produces excellent agricultural crops. The limestone - and clay-based soils give the region an agricultural security akin to the bluegrass area. The county is well-provided with the headwaters of the Pond, Tradewater, Little, and the West Fork of the Red Rivers rising in the vicinity of its center. This geographical oddity is interesting since no other county's water can ever threaten Christian County's lowlands with flooding. A natural bridge, five feet wide, thirty feet high and sixty feet long, is located in the northern part of the county. There are some forested areas, principally in the northern part, and coal, oil, and natural gas deposits are found in scattered sections of the region.

Hopkinsville, the county seat, is 541 feet above sea level with a population of 21,076 in 1970. It is one of the leading dark-fired tobacco markets in the country. The town gives evidence of long prosperity in its large comfortable old homes on wide lawns and in its tree-shaded streets and many stores. Bartholomew Wood settled the townsite in 1797, which was first named Elizabethtown. The name was changed in 1804 to Hopkinsville, at which time it was incorporated in honor of General Samuel Hopkins. Several settlers arrived from Virginia and North Carolina, and the population grew rapidly.

The first settlement in Christian County was made by John Montgomery and James Davis of Virginia in 1785. They built a block house on the West Fork of Red River near a large cave in which they hid from the Indians. Other settlers came, and within eleven years enough people had arrived to ask the Legislature for a new county organization.

Christian County was named for Colonel William Christian, a native of Augusta County, Virginia. He fought with General Edward Braddock in western Pennsylvania in 1755. He married one of Patrick Henry's sisters, served in the convention which formed Virginia as a state, and led militia units against the Indians. He moved to Kentucky in 1785 and settled at Louisville.

Hopkinsville has several interesting old homes. The Knight House is a two-story brick building of the Classical Revival style and was built in the 1830's. The Ross Dillard House, built about 1856, was shaped like a steamboat. Tradition is that before the Civil War, Dillard traveled to New Orleans in a steamboat and upon his return built a house like the boat as a memorial to the floating palace.

Adlai E. Stevenson moved from Hopkinsville to Illinois where he practiced law until he was elected to the United States Congress in 1874 and again in 1878. He served as First Assistant Postmaster-General during Grover Cleveland's first term as President and as Vice-President during Cleveland's second term. Charles Mayfield Meacham published A History of Christian County, Kentucky from Oxcart to Airplane, an interesting account of Christian County's history, in the early 1930's. In 1926 some far-sighted leaders organized the Hopkinsville Industrial Foundation to promote industrial growth in the area. Edward T. Breathitt, a Hopkinsville native, was elected Governor of Kentucky in 1963.

SOURCES OF INFORMATION

- 1/ U. S. Department of Commerce, Bureau of the Census, Census of Population 1950, 1960, 1970 (Preliminary figures).
- 2/ Kentucky Department of Economic Security, Division of Research and Statistics.
- 3/ Kentucky Department of Economic Security, Number of Workers in Manufacturing Industries Covered by Kentucky Unemployment Insurance Law Classified by Industry and County, September 1959, September 1969.
- 4/ Kentucky Department of Commerce.
- 5/ Kentucky Department of Economic Security, Division of Employment Service, Hopkinsville office.
- 6/ Kentucky Department of Economic Security, Kentucky Labor Supply Estimates by County, January 1970.
- 7/ Kentucky Department of Commerce, Future Labor Supply by 1976.
- 8/ University of Kentucky, Office of Development Services and Business Research, Total Personal Income for Kentucky.
- 9/ University of Kentucky, Office of Development Services and Business Research, Per Capita Income in Kentucky.
- 10/ Louisville and Nashville Railroad, Louisville, Kentucky.
- 11/ Skaggs Transfer, Inc., Louisville, Kentucky.
- 12/ Kentucky Department of Revenue, Kentucky Property Tax Rates, 1969.
- 13/ U. S. Department of Commerce, Bureau of the Census, Census of Agriculture, 1964. U. S. Department of Agriculture and Kentucky Department of Agriculture, Kentucky Agricultural Statistics, 1968.

All other information was obtained from governmental offices, local businesses and organizations.

This copy has been prepared by the Kentucky Department of Commerce,
Division of Research and Planning, and the cost of printing paid from
state funds.