

1971

## Industrial Resources: Clark County - Winchester

Kentucky Library Research Collections  
Western Kentucky University, [spcol@wku.edu](mailto:spcol@wku.edu)

Follow this and additional works at: [https://digitalcommons.wku.edu/clark\\_cty](https://digitalcommons.wku.edu/clark_cty)

 Part of the [Business Administration, Management, and Operations Commons](#), [Growth and Development Commons](#), and the [Infrastructure Commons](#)

---

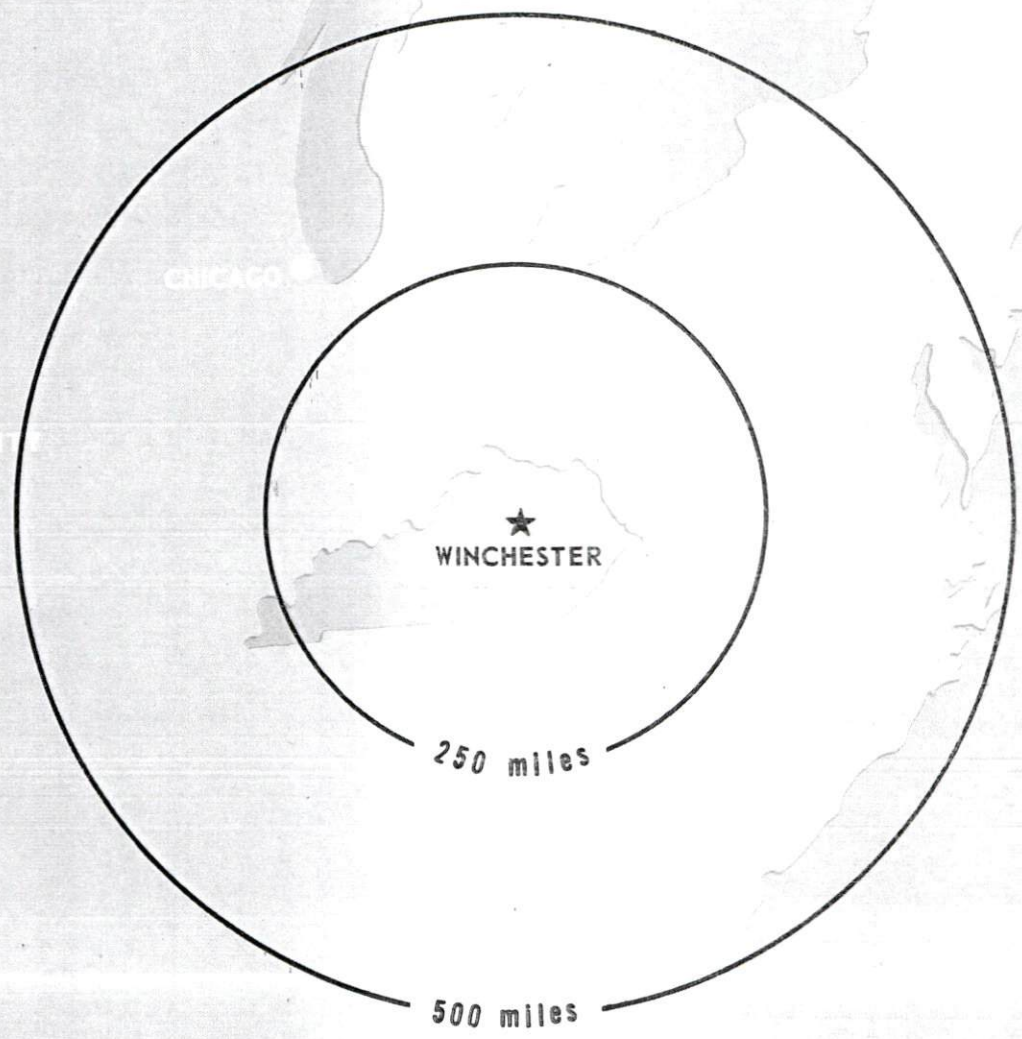
### Recommended Citation

Kentucky Library Research Collections, "Industrial Resources: Clark County - Winchester" (1971). *Clark County*. Paper 11.  
[https://digitalcommons.wku.edu/clark\\_cty/11](https://digitalcommons.wku.edu/clark_cty/11)

This Report is brought to you for free and open access by TopSCHOLAR®. It has been accepted for inclusion in Clark County by an authorized administrator of TopSCHOLAR®. For more information, please contact [topscholar@wku.edu](mailto:topscholar@wku.edu).

# INDUSTRIAL RESOURCES

## **WINCHESTER KENTUCKY**

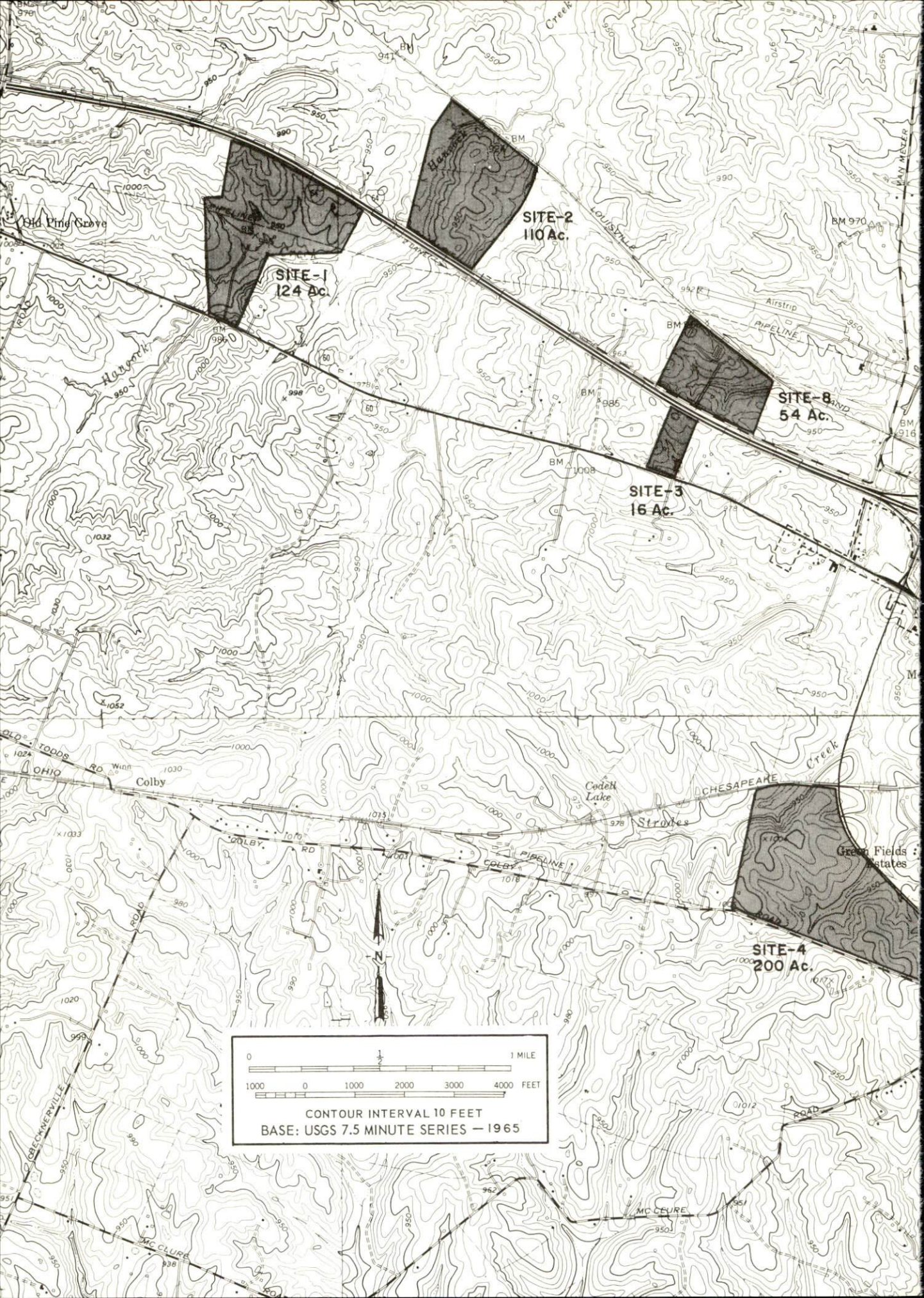


## WINCHESTER INDUSTRIAL SITES

1971

For additional information concerning the following sites, contact George Gawthrop, President, Winchester-Clark County Chamber of Commerce, Winchester, Kentucky; or the Kentucky Department of Commerce, Frankfort, Kentucky.

- SITE #1: ACREAGE: 124 acres  
 LOCATION: 2 1/4 miles northwest of Winchester  
 HIGHWAY ACCESS: Fronts on U.S. 60 with a paved access road onto site  
 RAILROADS: Not rail served  
 WATER: Boonesboro Water Association, Inc.  
 SIZE LINE: 8-inch line along southern boundary  
 GAS: Columbia Gas of Kentucky  
 SIZE MAIN: 12-inch main through site  
 ELECTRICITY: Kentucky Utilities or Clark RECC  
 SEWERAGE: Package plant necessary  
 OWNERSHIP: East Kentucky RECC
- SITE #2: ACREAGE: 110 acres  
 LOCATION: 1 1/2 miles northwest of Winchester  
 HIGHWAY ACCESS: Fronts on Rockwell Road; 2 miles from I-64 interchange  
 RAILROADS: Louisville & Nashville Railroad  
 WATER: Boonesboro Water Association, Inc. (4-inch line 700 feet west of site) or Winchester Municipal Utilities (12-inch line approximately 1,200 feet southeast of site)  
 GAS: Columbia Gas of Kentucky  
 SIZE MAIN: 12-inch main 200 feet east of site  
 ELECTRICITY: Kentucky Utilities or Clark RECC  
 SEWERAGE: Package plant necessary  
 OWNERSHIP: Private
- SITE #3: ACREAGE: 16 acres  
 LOCATION: Nine-tenths mile west of Winchester  
 HIGHWAY ACCESS: Fronts on U.S. 60  
 RAILROADS: Not rail served  
 WATER: Winchester Municipal Utilities  
 SIZE LINE: 12-inch line along southern boundary  
 GAS: Columbia Gas of Kentucky  
 SIZE MAIN: 10-inch main along U.S. 60  
 ELECTRICITY: Kentucky Utilities Company  
 SEWERAGE: Package plant necessary  
 OWNERSHIP: Private
- SITE #4: ACREAGE: 200 acres  
 LOCATION: Three-fifths mile west of Winchester  
 HIGHWAY ACCESS: Colby Road along southern boundary; Kentucky 1958 along eastern boundary  
 RAILROADS: Chesapeake and Ohio Railway  
 WATER: Winchester Municipal Utilities  
 SIZE LINE: 12-inch line along Kentucky 1958  
 GAS: Columbia Gas of Kentucky  
 SIZE MAIN: 12-inch main along Colby Road  
 ELECTRICITY: Kentucky Utilities Company  
 SEWERAGE: Package plant necessary  
 OWNERSHIP: Private
- SITE #5: ACREAGE: 16 acres  
 LOCATION: Northern edge of Winchester  
 HIGHWAY ACCESS: City street to U.S. 227  
 RAILROADS: Louisville & Nashville Railroad borders site.  
 WATER: Winchester Municipal Utilities  
 SIZE LINE: 10-inch line at southeastern corner of site  
 GAS: Columbia Gas of Kentucky  
 SIZE MAIN: 10-inch main along I-64 approximately 700 feet from northern boundary of site  
 ELECTRICITY: Kentucky Utilities Company  
 SEWERAGE: Winchester Municipal Utilities  
 OWNERSHIP: Private
- SITE #6: ACREAGE: 80 acres  
 LOCATION: North Winchester  
 HIGHWAY ACCESS: U.S. 227; at I-64 interchange  
 RAILROADS: Not rail served  
 WATER: Winchester Municipal Utilities  
 SIZE LINE: 6-inch line along U.S. 227  
 GAS: Columbia Gas of Kentucky  
 SIZE MAIN: 10-inch main through site  
 ELECTRICITY: Kentucky Utilities Company  
 SEWERAGE: Winchester Municipal Utilities  
 OWNERSHIP: Private
- SITE #7: ACREAGE: 42 acres  
 LOCATION: One-tenth mile northwest of Winchester  
 HIGHWAY ACCESS: I-64 interchange just west of site; a gravel access road along south boundary of site  
 RAILROADS: Louisville & Nashville Railroad  
 WATER: Winchester Municipal Utilities  
 SIZE LINE: 6-inch line 1,000 feet west of site  
 GAS: Columbia Gas of Kentucky  
 SIZE MAIN: 10-inch main across I-64  
 ELECTRICITY: Kentucky Utilities Company  
 SEWERAGE: Package plant necessary  
 OWNERSHIP: Private
- SITE #8: ACREAGE: 54 acres  
 LOCATION: Two-fifths of a mile west of Winchester  
 HIGHWAY ACCESS: Rockwell Road with a gravel access road onto site  
 RAILROADS: Louisville & Nashville Railroad  
 WATER: Winchester Municipal Utilities  
 SIZE LINE: 2-inch line on site  
 GAS: Columbia Gas of Kentucky  
 SIZE MAIN: 12-inch main at northwest corner of site  
 ELECTRICITY: Kentucky Utilities Company  
 SEWERAGE: Package plant necessary  
 OWNERSHIP: Private



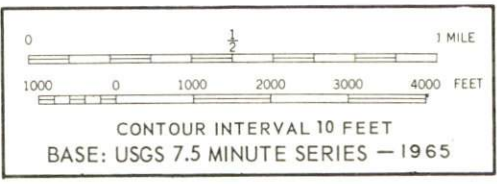
**SITE-1**  
124 Ac.

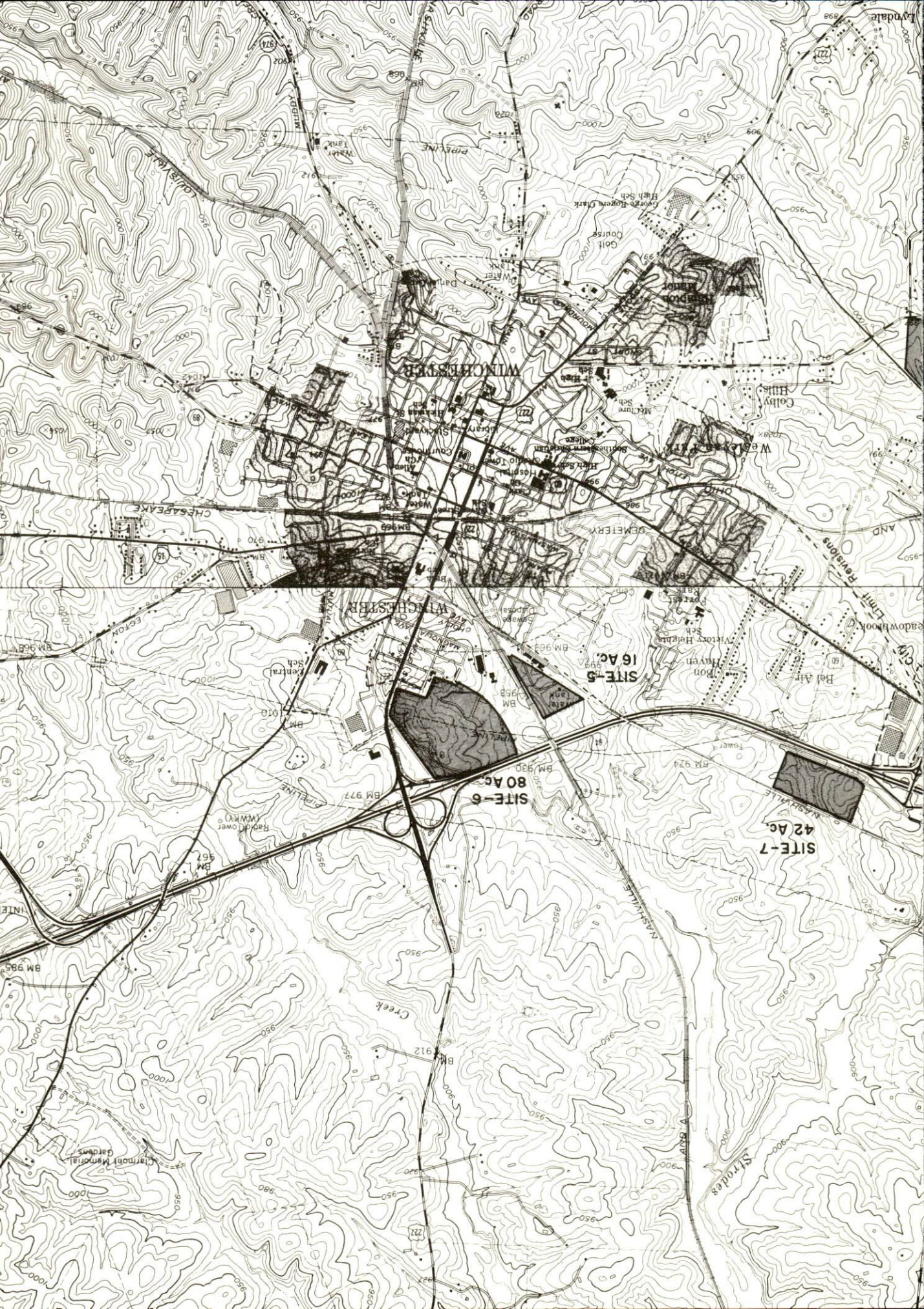
**SITE-2**  
110 Ac.

**SITE-3**  
16 Ac.

**SITE-4**  
54 Ac.

**SITE-4**  
200 Ac.





INDUSTRIAL RESOURCES  
WINCHESTER, KENTUCKY

Prepared by  
The Kentucky Department of Commerce  
in cooperation with  
The Winchester-Clark County Chamber of Commerce

1971

## TABLE OF CONTENTS

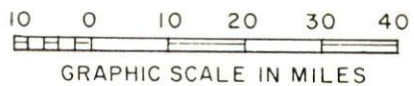
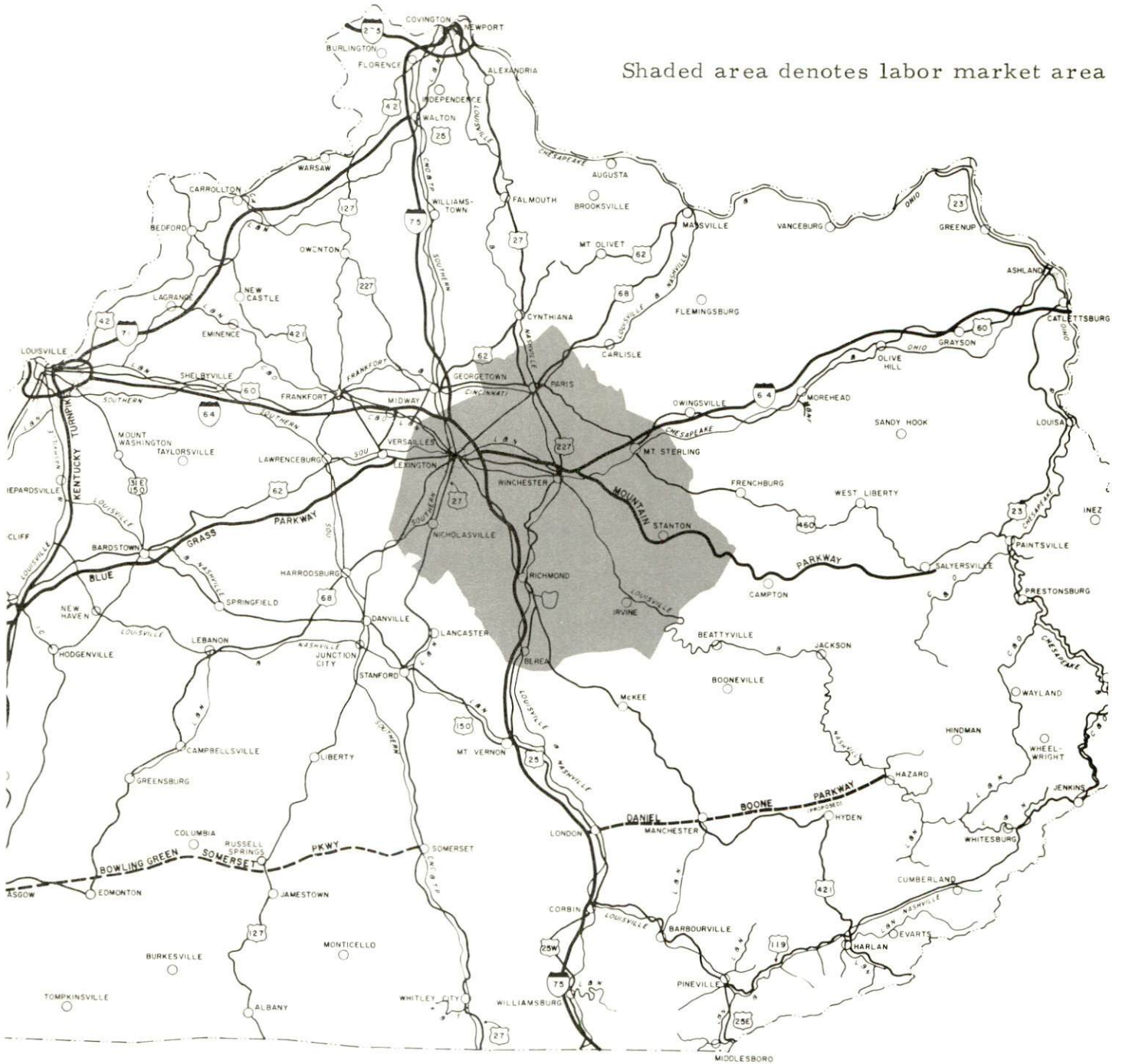
<u>Chapter</u>	<u>Page</u>
INDUSTRIAL SITES . . . . .	i
WINCHESTER, KENTUCKY - A RESOURCE PROFILE . . . . .	1
THE LABOR MARKET . . . . .	4
Population Trends . . . . .	4
General Employment Characteristics, 1969. . . . .	4
Manufacturing Employment Trends by Industry . . . . .	4
Major Winchester Manufacturing Firms, Their Products and Employment . . . . .	7
Wage Rates for Selected Occupations . . . . .	7
Labor Organizations . . . . .	8
Current and Future Labor Supply . . . . .	8
Total Personal Income . . . . .	8
Per Capita Personal Income . . . . .	8
EDUCATION. . . . .	9
Public Schools . . . . .	9
Parochial Schools . . . . .	9
Vocational Schools . . . . .	9
Colleges and Universities . . . . .	10
TRANSPORTATION . . . . .	13
Rail . . . . .	13
Truck Service . . . . .	13
Air . . . . .	14
Bus . . . . .	14
Taxi . . . . .	14
Rental Services . . . . .	14
POWER AND FUEL . . . . .	15
Electricity . . . . .	15
Natural Gas . . . . .	15
WATER AND SEWERAGE. . . . .	17
Water. . . . .	17
Sewerage . . . . .	18

<u>Chapter</u>	<u>Page</u>
LOCAL GOVERNMENT . . . . .	19
City . . . . .	19
County . . . . .	19
Assessed Value of Property, 1970 . . . . .	19
Local General Property Tax Rates Per \$100 of Assessed Valuation, 1970 . . . . .	19
Planning and Zoning . . . . .	20
Safety . . . . .	20
Police . . . . .	20
Fire . . . . .	20
Sanitation . . . . .	20
HEALTH. . . . .	21
Hospitals . . . . .	21
Nursing Homes . . . . .	21
Public Health . . . . .	21
OTHER LOCAL FACILITIES . . . . .	22
Communications . . . . .	22
Library Services . . . . .	22
Religious Institutions . . . . .	23
Financial Institutions . . . . .	23
Hotels and Motels . . . . .	23
Clubs and Organizations . . . . .	23
RECREATION . . . . .	25
Local . . . . .	25
Area . . . . .	25
AGRICULTURE - NATURAL RESOURCES - CLIMATE . . . . .	26
Agriculture . . . . .	26
Natural Resources . . . . .	26
Climate . . . . .	26
HISTORY. . . . .	27



# WINCHESTER LABOR MARKET AREA

Shaded area denotes labor market area



## WINCHESTER, KENTUCKY - A RESOURCE PROFILE

### Location

Winchester, the county seat of Clark County, is 95 miles southeast of Louisville, 99 miles south of Cincinnati, Ohio, and 18 miles east of Lexington, Kentucky. The city had a 1970 population of 13,402.

Clark County, located on the eastern edge of the Blue Grass Region of Kentucky, is bound on the east by Montgomery and Powell Counties, on the north by Bourbon County, on the west by Fayette County, and on the south by Madison and Estill Counties. Clark County's 1970 population was 24,090.

### The Economic Framework

Total employment in Clark County averaged 10,100 in 1969 with manufacturing providing 2,900 of these jobs. Manufacturing employment has increased by 153.7 percent or 1,763 jobs since 1960, with major industrial employment growth in the machinery and metal products industry.

Per capita personal income in Clark County in 1969 was \$3,270, an increase of \$1,673 since 1959.

Winchester is the hub of a labor market area that includes Clark County and its six surrounding counties. Area employment in 1969 totaled 132,200, including 38,250 jobs in trade and services, and 29,850 jobs in government. Manufacturing furnishes 26,800 jobs. Area industrial employment has nearly doubled since 1960 with the sharpest gain in the machinery and metal products industry which increased by over 8,400 jobs.

Despite important industrial gains in recent years the area still has a deficit of 2,446 manufacturing jobs when measured against the national industrial employment-population ratio. This indicates an area where the potential for additional manufacturing production is excellent.

### Resources for Growth

1. There is a current estimated labor supply of 4,925 men and 4,310 women available for industrial jobs in the labor market area. In addition, 12,875 young men and 12,420 young women will become 18 years of age by 1977 and potentially available for employment.

2. Transportation facilities are excellent for Winchester and Clark County. Interstate 64 is routed through Clark County with an interchange off U. S. 60, three-tenths mile west of Winchester, and another interchange at U. S. 227, just north of Winchester. The Mountain Parkway is located 1.3 miles east of Winchester. The Louisville & Nashville Railroad and the Chesapeake and Ohio Railway provide freight service to the Winchester area. Commercial air service is available at Blue Grass Field in Lexington.

3. Natural gas service is provided by Columbia Gas of Kentucky. Electric power is provided by the Kentucky Utilities Company and the Clark Rural Electric Cooperative Corporation.

4. Industrial sites - Winchester has eight industrial sites ranging from 16 to 200 acres.

5. Winchester is the home of Southeastern Christian College. In addition, four universities, four senior colleges, and two junior colleges are within 50 miles of Winchester. A vocational extension center at Winchester offers training in four fields. The nearest area vocational school, in Lexington, offers training in 19 different fields.

#### Community Programs for Improvement

Community programs recently implemented in Winchester include the reactivation of the Citizen's Advisory Committee, a sounding board for community opinion. City government has recently switched from the city commission form to the city manager form of government. A new zoning ordinance, proposed by the new City-County Planning Commission, has been adopted by the city and county. The Winchester Police Department has implemented an incentive pay-raise program. Two law enforcement grants were received by the police department for a comprehensive regional photo laboratory and for a communication system. Two hundred public-housing units have been completed in Winchester. Within the Clark County School System recent improvements include construction of the new Conkwright Junior High School. The high school is participating in the phase-elective English program. The Winchester-Clark County Ambulance Service has just begun operation. The New Clark County Vocational Extension Center was completed in 1969.

An engineering firm has completed a detailed study of the water and sewerage systems and resulting recommendations are now being considered. A major street improvement program is also underway in which every street in the city will be repaved. The city is in the process of acquiring property in the block surrounding the city hall to use as a municipal civic center and for parking space. The O. F. Shearer Elementary School is presently under construction. The police department has ordered three new cars.

Future plans include the construction of a junior high school in approximately three to four years. The fire department also plans to order another 1,000 gpm pumper. A new substation is planned for the west part of town by the Summer of 1972 to supplement the main fire station in downtown Winchester.

### Recreation, Entertainment, and Livability

Winchester's location in the Blue Grass Region offers its residents a variety of recreational activities. The Old Stone Meeting House, the first established church west of the Appalachian Mountains, and Indian Old Fields, the last Indian town in Kentucky, are located in Clark County. The Clark County Courthouse has a collection of historical paintings on display of such personages as Henry Clay, Daniel Boone, and George Rogers Clark.

Winchester is situated in an area which is accessible to numerous state parks. Natural Bridge State Resort Park, located in the Daniel Boone National Forest, and Fort Boonesborough State Park on the Kentucky River offer swimming, fishing, boating, and camping facilities. Other state parks within a fifty-mile radius of Winchester include the Blue Licks Battlefield State Park and the Old Fort Harrod State Park.

Lexington's attractions include horse racing at Keeneland and Red Mile, tours of world famous horse farms, and historical buildings such as Ashland, the estate of Henry Clay. Major intercollegiate sports are available at the University of Kentucky in Lexington. Frankfort, 38 miles distant, houses the State Capitol and the famous floral clock, as well as many historical buildings and museums.

THE LABOR MARKET

POPULATION TRENDS <sup>1/</sup>

Area	Population			Percent Change	
	1970	1960	1950	1960-70	1950-60
Winchester	13,400	10,187	9,226	+31.6	+10.4
Labor Market Area	295,439	237,242	203,089	+24.5	+16.8
Clark County	24,090	21,075	18,898	+14.3	+11.5
Bourbon County	18,476	18,178	17,752	+ 1.6	+ 2.4
Estill County	12,752	12,466	14,677	+ 2.3	-15.1
Fayette County	174,323	131,906	100,746	+32.2	+30.9
Madison County	42,730	33,482	31,179	+27.6	+ 7.4
Montgomery County	15,364	13,461	13,025	+14.1	+ 3.3
Powell County	7,704	6,674	6,812	+15.4	- 2.0

GENERAL EMPLOYMENT CHARACTERISTICS, 1969 <sup>2/</sup>

Major Employment Group	Employment	
	Clark County	Labor Market Area
TOTAL	10,100	132,200
Agricultural	1,200	8,600
Nonagricultural	8,900	123,600
Manufacturing	2,900	26,791
Trade and Services	2,103	38,255
Government	850	29,850

MANUFACTURING EMPLOYMENT TRENDS BY INDUSTRY  
SEPTEMBER 1970 AND 1960 <sup>3/</sup>

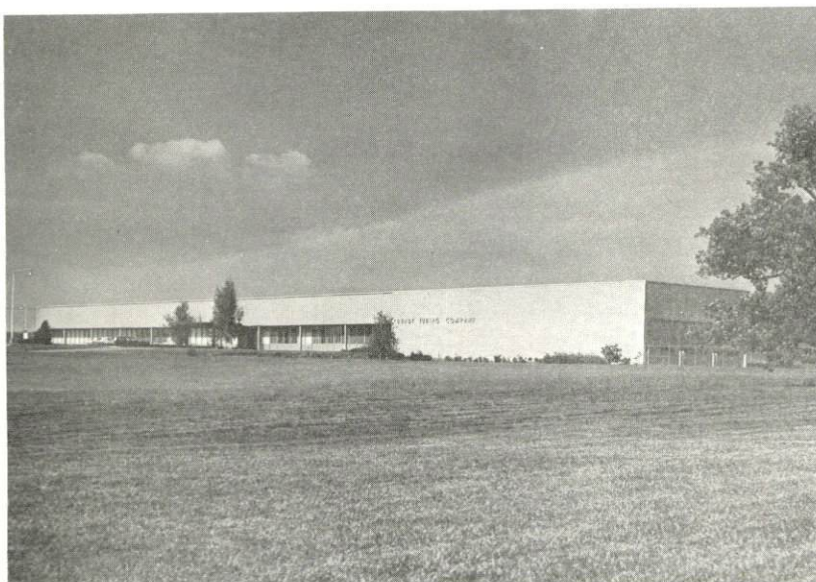
Industry	Clark County			Labor Market Area		
	1970	1960	%Change	1970	1960	%Change
TOTAL	2,910	1,147	+153.7	26,802	13,627	+ 96.7
Food & Kindred Products	29	15	+ 93.3	1,353	1,506	- 10.1
Tobacco	1	3	- 66.6	1,091	1,286	- 15.2
Apparel, Textiles, Leather	421	290	+ 45.2	3,442	1,770	+ 94.5
Lumber & Furniture	456	152	+200.0	657	441	+ 49.0
Printing, Publishing, Paper	53	37	+ 43.2	1,810	879	+105.9
Chemicals, Petroleum, Coal, Rubber	172	22	+681.8	1,573	608	+153.7
Stone, Clay & Glass	8	8	0	726	593	+ 22.4
Primary Metals	504	220	+129.1	621	220	+182.3
Machinery & Metal Products	1,251	400	+212.7	14,698	6,216	+136.4
Other	15	0	0	831	108	+669.4



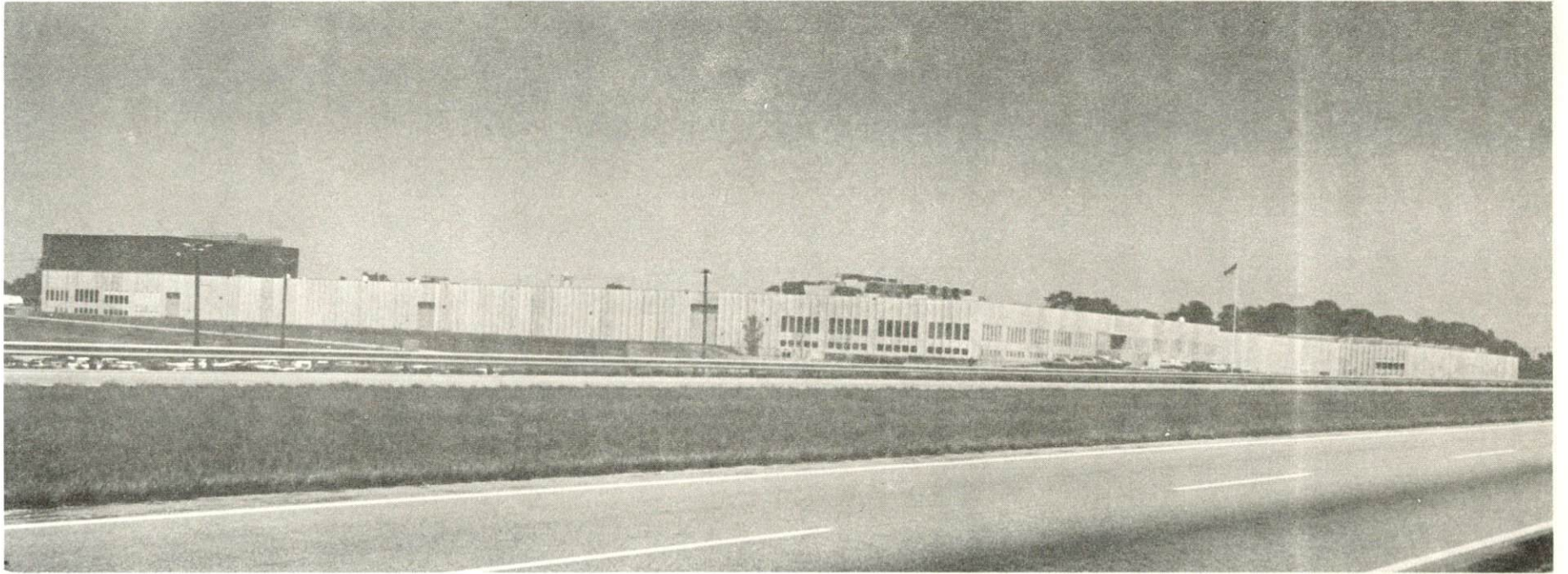
CURLEE CLOTHING COMPANY



SYLVANIA ELECTRIC  
PRODUCTS, INC.



BUNDY TUBING COMPANY



ROCKWELL-STANDARD COMPANY

MAJOR WINCHESTER MANUFACTURING FIRMS,  
THEIR PRODUCTS AND EMPLOYMENT <sup>4/</sup>

<u>Firm</u>	<u>Product</u>	<u>Employment</u>		
		<u>Total</u>	<u>Male</u>	<u>Female</u>
Bundy Tubing Co.	Copper-coated steel tubing, steel tubing	482	472	10
Curlee Clothing Co.	Men's suits, coats	317	34	283
The Freeman Corp.	Walnut veneer, kiln dried walnut lumber, walnut logs	70	66	4
Leggett & Platt, Inc.	Mattress units, box springs, bed frames	258	250	8
Loma Manufacturing Co.	Ladies' blouses, men's shirts, ladies' dresses	135	10	125
Parker Seal Co.	Synthetic rubber rings and seals	112	49	63
Rockwell-Standard Co.	Truck axles	825		
Sylvania Electric Products, Inc.	Incandescent and projection lamps	673	175	498

WAGE RATES FOR SELECTED OCCUPATIONS  
WINCHESTER, KENTUCKY <sup>5/</sup>

<u>Classification</u>	<u>Wages Per Hour</u>	
	<u>Starting</u>	<u>Prevailing</u>
<u>Production Employees</u>		
Assembler	\$2.05	\$2.35
Inspector	2.25	2.50
Production Laborer	2.05	2.40
<u>Service Employees</u>		
Electrician (Class-A)	\$3.50	\$4.00
Laborer	2.00	2.25
Machinist	3.50	4.35
Mechanic, Maintenance	3.25	3.75
Truck Driver, Industrial (Class-A)	1.85	2.50
<u>Office Employees</u>		
Bookkeeper	\$2.75	\$3.25
File Clerk	1.75	2.00
Receptionist	1.90	2.25
Secretary	2.50	3.00
Typist	1.80	2.10



LABOR ORGANIZATIONS

<u>Union</u>	<u>Representing Workers at:</u>
International Union, United Automobile, Aerospace & Agricultural Implement Workers of America (UAW)	Rockwell-Standard Co. Bundy Tubing Company - Division of Bundy Corporation Sylvania Electric Products, Inc.

CURRENT AND FUTURE LABOR SUPPLY -  
WINCHESTER LABOR MARKET AREA

<u>Area</u>	<u>Current Labor Supply, 1971</u> <sup>6/</sup>			<u>Future Labor Supply by 1977</u> <sup>7/</sup> (Becoming 18 Years of Age)		
	<u>Total</u>	<u>Male</u>	<u>Female</u>	<u>Total</u>	<u>Male</u>	<u>Female</u>
Labor Market Area	9,238	4,925	4,313	25,297	12,875	12,422
Clark	833	396	437	2,219	1,150	1,069
Bourbon	606	192	414	1,830	928	902
Estill	1,570	869	701	1,229	593	636
Fayette	2,611	1,498	1,113	14,472	7,356	7,116
Madison	1,923	1,075	848	3,268	1,671	1,597
Montgomery	794	418	376	1,453	767	686
Powell	901	477	424	826	410	416

TOTAL PERSONAL INCOME <sup>8/</sup>

<u>Area</u>	<u>1969*</u>	<u>1959</u>	<u>% Change</u>
Clark County	\$ 76,685,000	\$ 31,952,000	+140.0
Labor Market Area	965,971,000	393,806,000	+145.3
Kentucky	9,202,000,000	4,655,000,000	+ 97.7

PER CAPITA PERSONAL INCOME <sup>9/</sup>

<u>Area</u>	<u>1969*</u>	<u>1959</u>	<u>% Change</u>
Clark County	\$3,270	\$1,597	+104.7
Labor Market Area	\$1,320 to 3,920	\$728 to 1,954	NA
Kentucky	2,847	1,552	+ 83.4

\*Preliminary figures.

## EDUCATION

### Public Schools

	<u>Clark County</u>
Total Enrollment	5,532
Elementary	3,022
Junior High	1,032
High School	1,478
Student-Teacher Ratio	29-1
Elementary	28-1
Junior High	32-1
High School	28-1
State Rating of High School	Comprehensive and Merit
Other Accreditations	Southern Association of Colleges and Schools
Percent High School Graduates to College	46.9
Current Expenditures Per Pupil	\$401.64
Bonded Indebtedness, June 30, 1970	\$2,687,000

### Parochial Schools

Total Enrollment	111
Elementary	111
Student-Teacher Ratio	18-1
Elementary	18-1

### Vocational Schools

	<u>Nearest Area School</u>	<u>Nearest Extension Center</u>
Location	Central Kentucky Area Vocational School Lexington	Clark County Extension Center Winchester
Miles Distant	18	
Curriculum	Drafting, Electricity, Welding, Tool and Die, Auto Mechanics, Graphic, Office Machine Repair,	Auto Mechanics Carpentry Machine Shop Welding

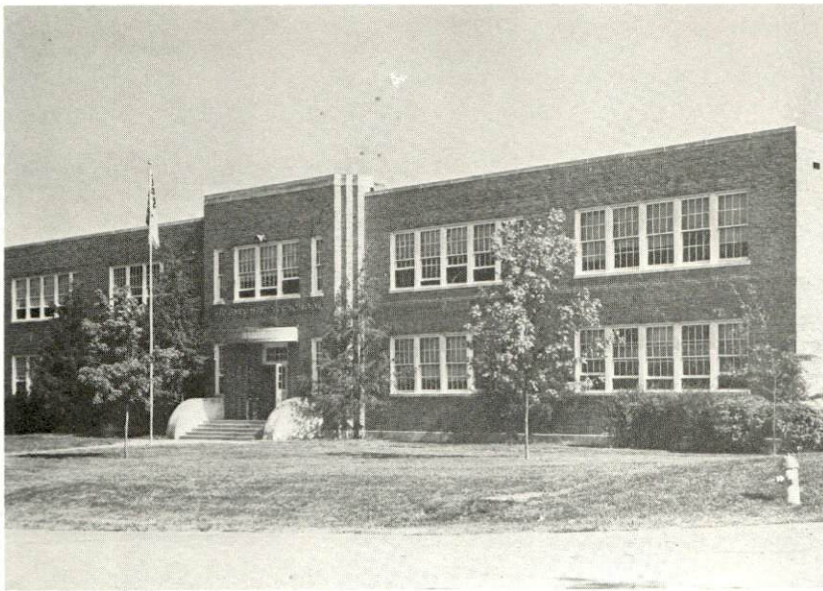
Nearest Area School

Curriculum      Business and Office Instruction  
Distributive Education  
Health Occupations  
Radio & TV Repair  
Machine Shop  
Technical Instruction  
Commercial Foods  
Sheet Metal  
Carpentry  
Auto Body Repair  
Plumbing and Steam Fitting

Colleges and Universities

<u>Name</u>	<u>Area - Within 50 miles</u>		<u>Highest Degree</u>
	<u>Location</u>	<u>Enrollment</u>	<u>Conferred</u>
Southeastern Christian Junior College	Winchester	148	Associate
Asbury College	Wilmore	1,044	Baccalaureate
Berea College	Berea	1,400	Baccalaureate
Eastern Kentucky University	Richmond	9,602	Masters
Georgetown College	Georgetown	1,366	Masters
Kentucky State College	Frankfort	1,754	Baccalaureate
Morehead State University	Morehead	6,030	Masters
Transylvania University	Lexington	859	Masters
University of Kentucky	Lexington	17,763	Ph. D., M. D., D. M. D., J. D.
Lexington Technical Institute	Lexington*		Associate
Midway Junior College	Midway	190	Associate

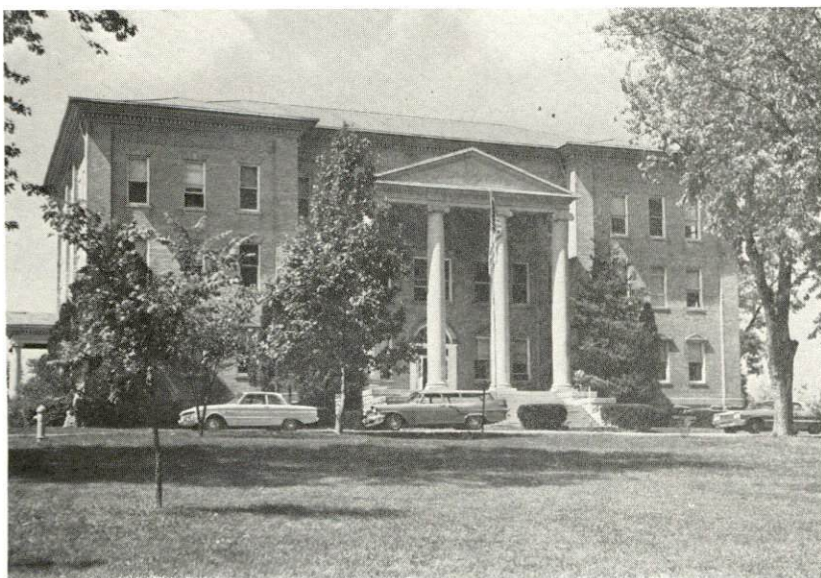
\*Included in University of Kentucky enrollment.



VICTORY HEIGHTS  
ELEMENTARY SCHOOL



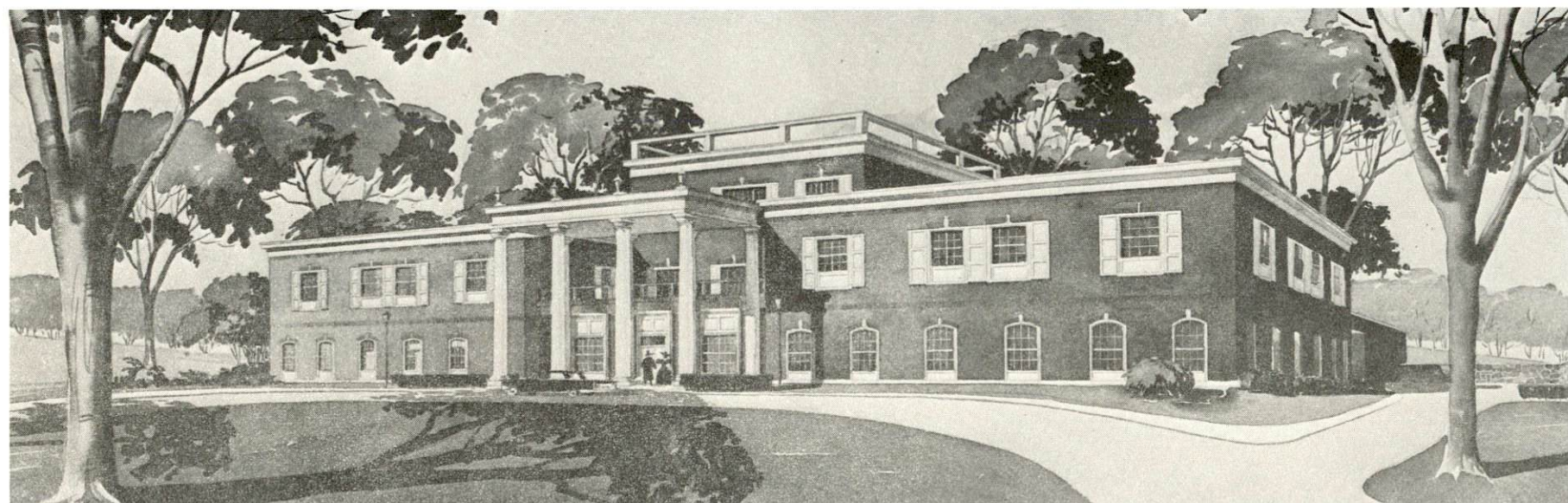
FANNIE BUSH SCHOOL



SOUTHEASTERN  
CHRISTIAN COLLEGE



GEORGE ROGERS CLARK HIGH SCHOOL



CLARK COUNTY HOSPITAL

## TRANSPORTATION

### Rail

Lines serving Winchester - Chesapeake and Ohio Railway, and Louisville & Nashville Railroad

Services - Freight, switching facilities, siding space, REA Express pickup and delivery service

### RAILWAY TRANSIT TIME FROM WINCHESTER, KENTUCKY, TO: 10/

City	No. of Days		City	No. of Days	
	CL			CL	
Atlanta, Ga.	3		Los Angeles, Calif.	5	
Birmingham, Ala.	3		Louisville, Ky.	1	
Chicago, Ill.	3		Nashville, Tenn.	2	
Cincinnati, Ohio	1		New Orleans, La.	4	
Cleveland, Ohio	3		New York, N. Y.	4	
Detroit, Mich.	4		Pittsburgh, Pa.	3	
Knoxville, Tenn.	2		St. Louis, Mo.	2	

### Truck Service

#### Company

#### Home Office

Cooper-Jarrett, Inc.	Orange, New Jersey
Dixie Ohio Express, Inc.	Akron, Ohio
Ecklar-Moore Express, Inc.	Lexington, Kentucky
United Trucking Service, Inc.	Lebanon, Kentucky
McLean Trucking Co.	Winston-Salem, North Carolina
Point Express, Inc.	Charleston, West Virginia
Wilson Freight Co.	Cincinnati, Ohio

HIGHWAY MILES AND TRUCK TRANSIT TIME IN DAYS FROM  
WINCHESTER, KENTUCKY, TO SELECTED MARKET CENTERS

City	Highway Miles	Delivery Time <u>11</u> / LTL TL		City	Highway Miles	Delivery Time LTL TL	
		Atlanta, Ga.	405			3	2
Birmingham, Ala.	428	3	2	Louisville, Ky.	95	Overnight	
Chicago, Ill.	392	2	1	Nashville, Tenn.	241	2	1
Cincinnati, Ohio	99	Overnight		New Orleans, La.	779	3	2
Cleveland, Ohio	347	2	1	New York, N. Y.	745	3	2
Detroit, Mich.	368	2	1	Pittsburgh, Pa.	383	2	1
Knoxville, Tenn.	211	2	1	St. Louis, Mo.	359	2	1

Air

Nearest Commercial

Blue Grass Field  
 Location: Lexington, 18 miles distant  
 Runways: 3  
 Length: 6,500 ft.; 3,500 ft.; 3,500 ft.  
 Traffic Control: Tower, guards, approach control, ground control, ILS system  
 Lighting: Approach lighting system, beacon, runways and obstructions lighted  
 Services: 80, 100, and 145 octane; jet fuel; major A & E repairs; storage; restaurant; Weather Bureau and flight instruction; charter service; taxi; U-Drive-It service; Eastern, Delta, Piedmont and Allegheny Airlines; and Buckeye Airlines (freight only)

Bus Southern Greyhound Bus Line

Taxi Bee Line Cab Company, City Taxi Service, Floyd's Taxi, and Menifee's Taxi Company

Rental Services Truck, trailer, and luggage rack rentals

## POWER AND FUEL

### Electricity

Company serving Winchester - Kentucky Utilities Company  
Source of power - Kentucky Utilities Company  
Total generating capacity - 773,000 KW  
Industrial rates furnished by - Kentucky Utilities Company, 308 West  
Lexington Avenue, Winchester, Kentucky 40391

Company serving Clark County - Kentucky Utilities Company  
Source of power - Kentucky Utilities Company  
Total generating capacity - 773,000 KW  
Industrial rates furnished by - Kentucky Utilities Company, 308 West  
Lexington Avenue, Winchester, Kentucky 40391

Company serving Clark County - Clark RECC  
Source of power - East Kentucky Power Cooperative  
Total generating capacity - 515,000 KW  
Industrial rates furnished by - Clark Rural Electric Cooperative  
Corporation, P. O. Box 748, Route 15, Winchester, Kentucky 40391

### Natural Gas

Company serving Winchester - Columbia Gas of Kentucky  
Source of supply - Kentucky Gas Transmission Corporation  
Size of transmission lines - 12-inch  
Distribution lines - 2 to 12 inches  
BTU content - 1030; Specific gravity - .60  
Distribution pressure - 4 oz.

Rates:

#### Firm

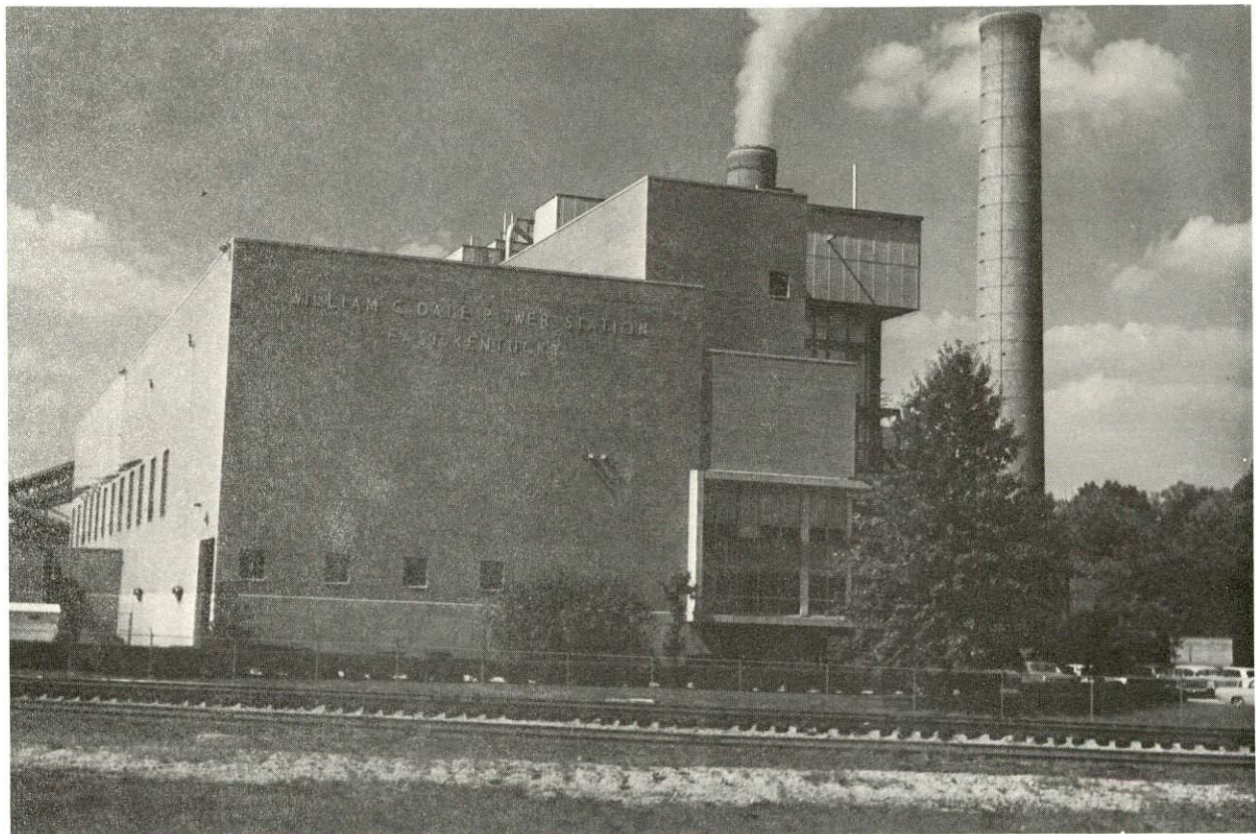
First	1,000 Mcf	\$ .7218 per Mcf
Over	1,000 Mcf	.6218 per Mcf
Curtaillable		.4940 per Mcf

Minimum charge per month \$700





COLUMBIA GAS OF KENTUCKY, INC.



WILLIAM C. DALE POWER STATION  
EAST KENTUCKY

## WATER AND SEWERAGE

### Water

Company serving Winchester - Winchester Municipal Utilities

Source - Kentucky River and reservoir

Treatment plant capacity - 2,200,000 gallons per day\*

Average daily consumption - 1,700,000 gallons

Peak daily consumption - 2,300,000 gallons

Type treatment - flocculation, settling, filtration, chlorination

Storage capacity - 2,475,000 gallons; Average pressure - 60 psi

Size mains - 18, 16, 12, 10, 8 and 6 inches

### MONTHLY WATER RATES FOR WHOLESALE AND INDUSTRIAL CONSUMERS

First	300 cu. ft.	\$1.05 per 100 cu. ft.
Next	200 cu. ft.	.80 per 100 cu. ft.
Next	1,500 cu. ft.	.70 per 100 cu. ft.
Next	15,000 cu. ft.	.60 per 100 cu. ft.
Next	25,000 cu. ft.	.45 per 100 cu. ft.
Next	25,000 cu. ft.	.35 per 100 cu. ft.
Next	25,000 cu. ft.	.30 per 100 cu. ft.
All over	92,000 cu. ft.	.25 per 100 cu. ft.
(minimum)		\$3.15

Name of water district - Boonesboro Water Association, Inc.

Area served - southwestern Clark County

Date when water district began operating - March 1970

Source of supply of treated water - City of Winchester

Amount of water which can be purchased - 25,000 gallons per month

Water district storage facilities - 2 standpipes

Average pressure - minimum of 30 lbs. - maximum of 90 lbs.

Size mains - 3 to 8 inches

Rates - established by size of meter - for a 2-inch meter the rate is

\$48.75 for first 50,000 gallons, and \$0.65 per 1,000 gallons in excess of 50,000 gallons

Surface water source - Kentucky River

Average discharge - 122 cfs, Kentucky River at Lock 10 near Winchester

Expected ground water yield - 5 to 200 gpm in far western section of county;  
5 gpm or less in remainder of county

---

\*Expansion capabilities up to 5,500,000 gpd. Plans are underway to increase the treatment capacity in the near future.

Sewerage

Company serving Winchester - Winchester Municipal Utilities  
Design capacity - 2,900,000 gallons per day  
Average daily flow - 1,300,000 gallons  
Treatment - primary and secondary  
Type treatment - secondary waste treatment process of high-rate  
trickling filter type  
Treated effluent discharged into - branch of Strodes Creek  
Size of sanitary mains - 6 to 24 inches  
Size of storm mains - 10 to 36 inches  
Rates - 50 percent of water service for one month

LOCAL GOVERNMENT

City

Structure - Mayor - 4-year term; 4 commissioners - 2-year terms;  
 city manager  
 Estimated budget 1971 - General Fund \$605,700  
 Proposed budget 1970-71 - Water Fund \$450,000; Sewer Fund \$170,000;  
 Sanitation \$140,800  
 Fees and licenses - Business licenses vary according to type of business.

County

Structure - County Judge - 4-year term; 7 magistrates - 4-year terms  
 Budget 1970-71 - General Fund \$289,035; Road Fund \$122,818

Assessed Value of Property, 1970

<u>Classes of Property*</u>	<u>Winchester</u>	<u>Clark County</u>
Real Estate & Tangibles	\$64,520,395	--
Real Estate	--	\$126,904,470
Tangibles	--	35,214,267
Public Service	8,588,758	45,233,186 ('69)

Local General Property Tax Rates Per \$100 of Assessed Valuation, 1970 <sup>12/</sup>

<u>Taxing Unit**</u>	<u>Winchester</u>	<u>Clark County</u>
State	\$ .015	\$ .015
County	.184	.184
School	.525	.525
City	.246	
Total	\$ .970	\$ .724

\*Property assessed at 100 percent of fair value.

\*\*Manufacturing machinery, raw materials inventories and goods in process inventories are not subject to local tax. State rate is only \$0.15 per \$100.

Planning and Zoning

Agency - Winchester-Clark County Joint Planning Commission  
Plans completed - Comprehensive Plan, Subdivision Regulations,  
Zoning Ordinance, Public Improvements Program  
Codes adopted - Building, Housing, Plumbing, Electric, and Fire

Safety

Police

Winchester

Clark County

Total staff	21	4
Radio-patrol cars	3	3
Other equipment	radar, breathalizer, 1 traffic scooter, 4 walkie-talkies, radio contact with sheriff's office	

Fire

American Insurance

Association Fire Rating	6	
Full-time staff	13	5
Volunteers	16	6

Equipment:

1,000 gpm pumpers	1 (combination aerial truck)	
750 gpm pumpers	2	1 (with 1,000-gal. booster tank)
500 gpm pumper ladder truck	(the combination - aerial, ladder, pumper)	1
utility truck	1	
Other		tank truck with auxiliary pump on rear, 350 gpm

Sanitation

Winchester

Type service	municipal
Cost:	
residential	\$2 per month
business	\$5 per month
Collection frequency:	
residential	twice weekly
business	daily
Trash pickup	daily in different parts of town
Disposal method	incinerator

## HEALTH

### Hospitals

<u>General Hospital</u>	<u>Location</u>	<u>Beds</u>
Clark County Hospital	Winchester	81

General hospital facilities - 3 major and 1 minor operating rooms, 2 delivery rooms, 14 bassinets, 2 isolettes, 2 X-ray rooms, 1 laboratory

Medical staff - 11 doctors, 7 dentists, 25 registered nurses, 25 licensed practical nurses, 1 anesthesiologist, 1 part-time radiologist, 6 laboratory technicians, 3 X-ray technicians, 39 aides, and 5 orderlies. A psychiatric outpatient clinic is also held through comprehensive care center, and pathological and cardiological services are received from Lexington.

### Nursing Homes

	<u>Number</u>	<u>Beds</u>
Extended care homes	2	71

### Public Health

Facility - Clark County Health Department

Staff - 1 doctor on part-time basis, 4 nurses (full-time), 1 home health aide, 1 sanitarian, and 3 clerks

Budget 1970-71 - \$71,947

## OTHER LOCAL FACILITIES

### Communications

Telephone - South Central Bell Telephone Company  
Services - standard, mobile service, touch tone

Telegraph - Western Union Telephone Company  
Services - messenger and telephone delivery, candygram, flowergram,  
straight wire, night letter, money orders

Postal - U. S. Post Office  
Class - First  
Mail received - three times daily  
Mail dispatched - six times daily

Newspapers - Winchester Sun  
Daily and circulation - except Sunday - about 5,400  
Other papers received from - Louisville and Lexington, Kentucky;  
Cincinnati, Ohio

Radio - WWKY  
Stations received from - Lexington and Louisville, Kentucky

Television -  
Reception from - Lexington and Louisville, Kentucky; and Cincinnati,  
Ohio  
Kentucky Educational Television - Lexington - Channel 46

### Library Services

Public Libraries - Public library  
Size collection - 27,440 volumes  
Circulation, 1969-70 - 64,000  
Services - taped daily book review on local radio station, weekly library  
column in the newspaper, bookmobile services to the outlying county  
schools, and sponsors adult Clark County Art Exhibits & Children's  
Story Hour during National Library Week

Private Libraries - Olmstead Memorial Library at Southeastern Christian  
College  
Size collection - 13,800 volumes  
Special collections - Histories  
Services - Cassette tapes, filmstrips, magazines, displays every month,  
records

### Religious Institutions

Number of churches - 16

Denominations - Baptist, Catholic, Christian, Church of Christ, Church of God, Episcopal, Methodist, Presbyterian, and Non-denominational

### Financial Institutions

<u>Bank</u>	<u>Statement as of December 31, 1970</u>	
	<u>Assets</u>	<u>Deposits</u>
Clark County National Bank	\$16,866,004.14	\$15,017,210.11
Peoples Commercial Bank	18,316,699.19	16,662,397.08
The Winchester Bank	24,339,110.00	21,468,881.00
<u>Savings and Loan Associations</u>	<u>Assets</u>	<u>Shared Accounts</u>
Winchester Building & Savings Association	\$10,514,420.69	\$ 9,723,867.58
Winchester Federal Savings & Loan Association	4,555,782.42	4,001,104.99

### Hotels and Motels

Number - 6

Units - 185

### Clubs and Organizations

Business and Civic - Chamber of Commerce, Jaycees, Lions, Kiwanis, Optimist, Civitan, Clark County Association of Legal Secretaries, Civil Defense, Youth Council, Clark County Hospital Auxiliary

Fraternal - American Legion, Masonic Lodge, IOOF

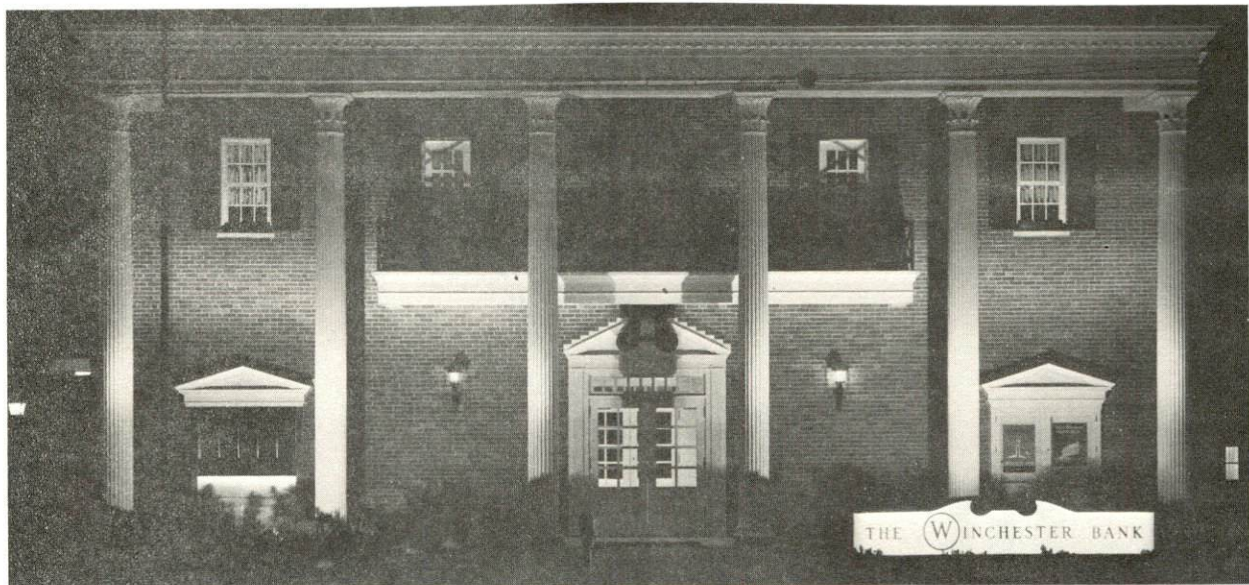
Women's - League of Women Voters, B & PW, Jaycettes, Lioness, Republican Woman's Club, Daniel Boone Music Club, Winchester Music Club, Little Garden Club, Fortnightly Club, Woman's Club, Newcomers Club, Torchbearers, American Legion Auxiliary, Eastern Star, Homemakers, American War Mothers

Youth - FTA, FHA, FFA, National Forensic League, Beta Club, Quill and Scroll, Children's Theater





CLARK COUNTY NATIONAL BANK



THE WINCHESTER BANK



PEOPLES COMMERCIAL BANK

## RECREATION

### Local

#### Public Recreation Facilities

- Parks - 5
- Playgrounds - 4
- Swimming pool - 1
- Golf course - 1
- Tennis courts - 2
- Baseball diamonds - 5
- Football field - 1

#### Private Recreation Facilities

- Country club - 1
- Golf course - 1
- Swimming pools - 2
- Movie theaters - 1 walk-in and 1 drive-in
- Bowling lane - 1

#### Tourist Attractions

- Old Stone Meeting House, first established church west of the Appalachian Mountains
- Indian Old Fields, the last Indian town in Kentucky
- Henry Clay's first and last speeches were given at the Clark County Courthouse.

#### Cultural Events

- A collection of historical paintings is on display at the courthouse.

### Area (Within 50 miles)

Lexington, 18 miles west of Winchester, offers horseracing at Keeneland and Red Mile Racetracks, world famous horse farms, and intercollegiate sports at the University of Kentucky

Natural Bridge State Resort Park

Daniel Boone National Forest

Fort Boonesborough State Park

Blue Licks Battlefield State Park

Old Fort Harrod State Park

Frankfort, 38 miles distant, is the home of the Kentucky State Capitol and the famous Floral Clock as well as many historical buildings and museums.

AGRICULTURE - NATURAL RESOURCES - CLIMATE

Agriculture 13/

	<u>Clark County</u>	<u>Labor Market Area</u>
Total land area (acres)	165,760	1,230,080
Percent of area in farm land	95.4	82.4
Number of farms	1,129	7,619
Average size of farms (acres)	140.1	133.1
1964 value of all farm products	\$10,163,134	\$62,503,637
Value per farm	9,001	8,203
Total crop sales	3,727,432	28,653,715
Total livestock & livestock products	6,434,902	33,822,889
1968 agricultural production included:		
Burley tobacco (lbs.)	6,786,000	48,400,000
Corn (bu.)	370,000	2,507,000
Cattle and calves (number)	37,600	241,400
Hogs and pigs (number)	6,200	69,100
Milk production (1967) (lbs.)	6,480,000	62,080,000

Natural Resources

Principal mineral resources	Limestone and natural gas
Other mineral resources	Vein minerals, lead, zinc, clay, sand and gravel
Acres of commercial forest land	12,000 (7 percent of land area)
Most abundant tree species	White oak, red oak, hickory, ash, hard maple, red cedar, and black walnut

Climate 14/

	<u>Clark County</u>
Temperature	
Annual mean (30-year record)	55.6 degrees
Average annual 1970	54.5 degrees
Record highest July, 1966+ (7-year record)	98 degrees
Record lowest January, 1966+ (7-year record)	-10 degrees
Seasonal heating degree-days (30-year record)	4,683
Precipitation	
Mean annual total (30-year record)	44.73 inches
Mean annual snow and sleet (25-year record)	16.0 inches
Total precipitation 1969	39.5 inches
Mean number days precipitation (.01 inches or more) (26-year record)	129
Average number days thunderstorms (26-year record)	47
Prevailing winds (17-year record)	South

## HISTORY

Clark County is situated in the central part of Kentucky, covering 259 square miles. Its western portion lies in the Bluegrass Region and is gently rolling and very fertile; its northeastern portion is broken but fertile; and the southeastern section lies in the Knobs Region and is hilly with thin soil. The Kentucky River forms the county's southwestern border and Red River its southeastern border. Boone Creek flows along its western line.

The first settlements in the area were Strode's Station, established in 1779 two miles from present-day Winchester, and Hood's Station, established soon thereafter. Bush's Station, which was developed in 1783, became the county seat and was later named Winchester. The county's first brick building was built there by Captain William Bush in 1784. Indian Old Fields, the last Indian town in the state, was located in the eastern part of Clark County, and the oldest Indian trail in America, "The Warriors' Path," passed through the area. Consequently, the central Kentucky settlements came under heaviest attack by the Indians.

In 1792, Clark became Kentucky's fourteenth county, named for General George Rogers Clark, who built Fort Nelson at present-day Louisville and led campaigns against the British in the western territory. Clark had helped guide the plans by which Kentucky became a state.

Winchester, the county seat, was named for Winchester, Virginia. Early in its history Winchester became important as the marketing center of a large agricultural area. It was here that Henry Clay made his first and last speeches in law cases. The town grew in economic importance with the coming of the Louisville & Nashville and Chesapeake and Ohio Railroads. In 1970 Winchester had a population of 13,402.

Clark County had a population of 7,653 in 1800, which had reached 18,898 by 1950. Rapid industrial growth accompanied a population increase over the next two decades to 21,075 in 1960 and 24,090 in 1970.

Agriculture accounted for 1,200 of the county's 10,100 employed in 1969, with cattle, hogs, sheep, poultry, and tobacco the principal products. Manufacturing employment has undergone significant growth since 1959, reaching 2,455 in 1969. The heaviest concentration of production is in machinery and metal products, primary metals, furniture, and apparel. Largest of Winchester's firms, all employing over 300, are Sylvania Electric Products, Inc., making incandescent lamps; Bundy Tubing Company, which produces copper-coated steel tubing; Rockwell Standard Company, truck axles; and Curlee Clothing Company, men's suits.

Both Interstate 64 and the Mountain Parkway pass near Winchester, providing major transportation outlets. Southeastern Christian College, a junior liberal arts institution, is located at Winchester, and Fort Boonesborough State Park to the south offers recreational facilities.

Among noted names in the history of Clark County are James A. Clark, Governor of Kentucky (1836-1839) and General Richard Hickman, Lieutenant Governor of Kentucky (1812-1816).

## SOURCES OF INFORMATION

- 1/ U. S. Department of Commerce, Bureau of the Census, Census of Population, 1950, 1960, 1970.
- 2/ Kentucky Department of Economic Security, Division of Research and Statistics.
- 3/ Kentucky Department of Economic Security, Number of Workers in Manufacturing Industries Covered by Kentucky Unemployment Insurance Law Classified by Industry and County, September 1960, September 1970.
- 4/ Kentucky Department of Commerce, 1971 Kentucky Directory of Manufacturers.
- 5/ Kentucky Department of Economic Security, Division of Employment Services, Winchester Office.
- 6/ Kentucky Department of Economic Security, Kentucky Labor Supply Estimates by County, January 1971.
- 7/ Kentucky Department of Commerce, Future Labor Supply by 1977.
- 8/ University of Kentucky, Office of Development Services and Business Research, Total Personal Income for Kentucky.
- 9/ University of Kentucky, Office of Development Services and Business Research, Per Capita Income in Kentucky.
- 10/ Louisville & Nashville Railroad Company, Louisville, Kentucky.
- 11/ Ecklar-Moore Express, Inc., Lexington, Kentucky.
- 12/ Kentucky Department of Revenue, Kentucky Property Tax Rates, 1970.
- 13/ U. S. Department of Commerce, Bureau of the Census, Census of Agriculture, 1964. U. S. Department of Agriculture and Kentucky Department of Agriculture, Kentucky Agricultural Statistics, 1969.
- 14/ U. S. Department of Commerce, Environmental Science Services Administration, Climatological Data, 1970.

All other information was obtained from governmental offices, local businesses and organizations.

This copy has been prepared by the Kentucky Department of Commerce,  
Division of Research and Planning, and the cost of printing paid from  
state funds.