

Western Kentucky University

TopSCHOLAR®

Collections & Connections

Library Publications

10-2006

UA51/1 Collections & Connections

Cindy Troutman

WKU University Libraries, Cindy.Troutman@wku.edu

WKU University Libraries

Follow this and additional works at: <https://digitalcommons.wku.edu/collcon>



Part of the [Library and Information Science Commons](#), and the [Public Affairs, Public Policy and Public Administration Commons](#)

Recommended Citation

Troutman, Cindy and , "UA51/1 Collections & Connections" (2006). *Collections & Connections*. Paper 6.
<https://digitalcommons.wku.edu/collcon/6>

This Newsletter is brought to you for free and open access by TopSCHOLAR®. It has been accepted for inclusion in Collections & Connections by an authorized administrator of TopSCHOLAR®. For more information, please contact topscholar@wku.edu.



WESTERN KENTUCKY UNIVERSITY LIBRARIES

Cindy Troutman, Editor

October 2006

collections & connections

Celebrate the Spirit **1906-2006**

Celebrate The Spirit is located near the reference desk on the first floor of the Helm Library. The WKU Centennial Committee with Dean David Lee, Chairman, commissioned the mural and it was made possible by support from the Dean of Libraries, Michael Binder. The project was under the direction of Lynne Ferguson, Kentucky Library and Museum Artist-in-Residence. Local artist Alice Gatewood Waddell and Jayne Pelaski, Centennial Committee, assisted in the mural's design and completion. The painting of the mural began in June as middle and high school students, local artists, Western Kentucky University students and staff volunteered in painting the mural. Volunteers were Simarika Adhikari, Alexia Ault, Savannah Campbell, Heather Cowherd, Saena Garcia, Sophi Garfinkle, Julie Hansbrough, Lauren Kern, Morgan Kern, Kaitlin McGrane, Amy McCray, Patrick Merry, Devon Murphy, Jayne Pelaski, Delaire Rowe, Sara Travis, Catherine Watwood, and Katie White.



Call for Christmas Trees

On December 2 a collection of handmade ornaments will be on display at the Kentucky Museum. This collection includes over 1,200 pieces, each one made by a Warren County fourth grader! All Warren County Schools participated in this project. We would like each school to have its own tree. If you have a tree you would like to donate or loan to The Kentucky Museum, please call 270-745-7056. Donations must be received by November 9.



calendar of events

OCTOBER

Nature's Bounty: Quilts and More Exhibit, The Kentucky Museum, through January 28.

October 12 –Kentucky Live presents Larry Kass, Corporate Communications, Heaven Hill Distilleries, Barnes & Noble, 7:00 p.m.

October 14— Quilt Workshop w/ Juanita Yeager at The Kentucky Building, 9:00 to 3:00

October 18 – Alt. Rock band, Woe Tomorrow, Java City, 11:30

October 19— Far Away Places presents WKU Professor, Dr. David Keeling, on *Turkey* at Barnes & Noble, 7:00 p.m.

October 20 – Guitarist, Brent Wilkinson, Java City, Noon

October 23-27 – 1Read, a Teen Read Project, featuring *Kung Fu Princess* by Pamela Walker

October 25 – Top 40 Pop band, Will & Zaney, Java City, Noon

October 31 – Shadow Dancer, Java City, Noon

NOVEMBER

November 2 – On the Same Page Kick-off —www.bgOneBook.org

November 8 – Skip Bethune, Java City, Noon

November 9 – Kentucky Live presents Dr. James Klotter, "Political Scandals in Kentucky" Barnes & Noble, 7:00 p.m.

November 15-17 – On the Same Page featuring Christopher Canyon — www.bgOneBook.org

November 16 – Lee Quick will perform at Java City, Noon

November 16 – Far Away Places presents "Medieval Morocco" by Dr. Ronald Messier, Vanderbilt University, Barnes & Noble, 7:00 p.m.

November 29 – Comedian, Ken Frasure, Java City, Noon

DECEMBER

December 2 – Christmas in Kentucky, The Kentucky Building, 11:00-2:00

December 6 – Deb Bishop, Java City, Noon

December – Membership Holiday Party at The Kentucky Building

News

- **Personal Librarian** University Libraries launched a new Personal Librarian Program for students this year. This program will give students the opportunity to have one-on-one guidance from a librarian. Upon request the student will be assigned a librarian in his/her area of interest, will be given a tour of the library and will be provided with instruction on how to use our research databases, how to identify legitimate research sources and search periodicals. Special attention will be given to databases, periodicals, journals that are directly related to the student's discipline.
- **The Kentucky Library & Museum** is looking forward to a terrific year. With the support of President Ransdell and Campus Improvement Funds, KYLM's Plan for Change is being put into action.

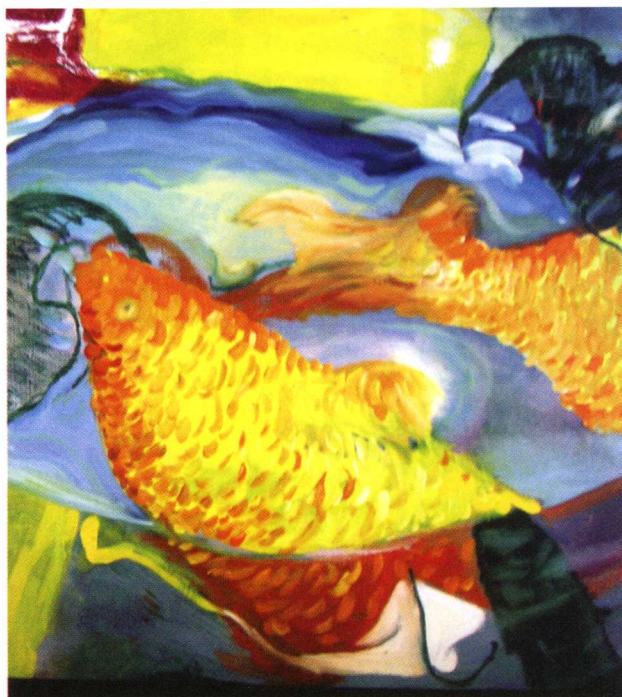
Remote Storage By moving the collections out of the Kentucky Building into a new temperature and humidity controlled facility, approximately 10,000 square feet of new gallery space for the museum will be created.

New Galleries The first new gallery spaces will be devoted to an outstanding collection of quilts and decorative arts. Furniture which descended through the family of Benjamin Franklin will be on display, the art collection of Perry Snell will come out of storage and be seen for the first time in corporate memory, Kentucky-made furniture, and the silver and glass collections will all have an opportunity to be seen in the decorative arts gallery space.

Improving Accessibility Improved accommodations at the Kentucky Building, including a self-operated elevator and new, self-operated chair lift, will make the entire Kentucky Building easily accessible to the public. There are more wonderful things to come over the next four years. Be on the look out for an invitation to the re-opening of the Kentucky Library & Museum!

Lynne Marrs Hammer Ferguson Exhibit

A collection of original oil paintings and collages by the Kentucky Library & Museum Artist-in-Residence Lynne Ferguson is on display from October 16 to January 8th, 2007, in Helm 100. Included in the exhibit are new pieces from a series entitled *Living in a Fishbowl*. Ms. Ferguson's work is held in private and corporate collections throughout the United States.





Christmas in Kentucky

The Kentucky Library & Museum will host Christmas in Kentucky on December 2 immediately following the Bowling Green Christmas Parade. A day of family fun is planned, including pictures with Santa and Mrs. Claus, ornament making, Magic Shows, dramatic performances and many other family activities and the opening of the Holiday Ornament Exhibit. Ornaments on display have been created by the fourth grade classes of Warren County (public, private, city, county). Also on that day a beautiful quilt generously donated by The Thimbleberries Club of Bowling Green will be raffled off. **Admission is free!**

This is only a small part of what's happening at University Libraries! See what UL faculty have been doing, learn more about programs, events, current exhibits, read our e-newsletter and visit our Blog at www.wku.edu/Library or call 270-745-4502 for more information.



Ogden College, Rah! Rah! Rah!

Exhibited in the Orientation Room of the Kentucky Building, "Ogden College: Rah! Rah! Rah!" features the letter sweater, diploma and several photographs of Ras Jones, class of 1926. A pennant, donated by Jo Tilden "Top" Orendorf, Freshman class of 1926, is also displayed with the recent donation. Mr. Jones' Ogden mementoes are part of the Jones family papers recently donated by the family of Ras Jones to the Kentucky Library & Museum.

University Archivist Sue Lynn McDaniel was thrilled to receive the Kentucky Museum's first Ogden letter sweater. "We are in search of additional Ogden College artifacts and personal papers that will tell us more about the private school which merged with Western in January 1927."

A quarterly subscription to *Collections & Connections* is a benefit given to Friends of Libraries & Museum. This is a complimentary issue. If you would like to receive additional issues, please consider joining Friends of Libraries & Museum. For more information please call 270-745-4502.

calendar of events

JANUARY

January 11 - Curator's tour of quilt exhibit / Evening of Wine and Roses, *Members only event*

January 19 - Very Special Arts exhibit opens at The Kentucky Building

January 20 - Warren County Quilt Registry Day

January 25 & 26 - One Campus-One Community-One Book Kick-off
www.bgOneBook.org

FEBRUARY

February 1 & 2 - Black History Month @ your library www.sokybookfest.org

February 8 - Kentucky Live presents James Archambeault, photographer, Barnes & Noble, 7:00 p.m.

February 9-11 - Macy's Used Book Sale, Depot Branch, BG Public Library

February 15 - Far Away Places presents WKU Professor, Dr. Michael Trapasso on *Antarctica*, WKU, Barnes & Noble, 7:00 pm

MARCH

March 1 & 2 - Meet One Book author Kim Edwards www.bgOneBook.org

March 3 - US Bank Community Art Show, The Kentucky Museum

March 8 - Kentucky Live presents Dr. Emily Craig, State Forensic Anthropologist, Barnes & Noble, 7:00 p.m.

APRIL

April 5 - Kristin Johannsen, author of *Ginseng Dreams*, Barnes & Noble, 7:00 p.m.

April 12 - *Israel* presented by Dr. Shannon Schaffer, WKU, Barnes & Noble, 7:00 p.m.

April 18 - Student Art Show, the Kentucky Building

April 20 - Kentucky Writers Conference, South Campus

April 20 & 21 - Southern Kentucky Book Fest, Sloan Convention Center



LIBRARIES

1906 College Heights Blvd. #11067
Bowling Green, KY 42101-1067

NON PROFIT ORG
US POSTAGE
PAID
BOWLING GREEN
PERMIT #398

New benefits for Friends of Libraries & Museum

Basic Membership (\$50) includes:

- Subscription to *Collections & Connections*
- Unlimited Museum admission
- 10% discount in Museum Store
- Invitations to special workshops, book discussions, presentations, exhibit openings and lectures hosted by University Libraries
- University Libraries borrowing privileges

Bronze Membership (\$100) includes:

- All Basic Membership benefits
- 15% discount in Museum Store
- Invitations to special "Members Only" events
- Discounts on special workshops and select events

Silver Membership (\$250) includes:

- All Bronze Membership benefits
- 20% discount in Museum Store
- 10 one-time use passes for The Kentucky Museum
- Invitation to special sneak-peek and behind the scenes events

Gold Membership (\$500) includes:

- All Silver Membership benefits

- Commemorative bookplate placed on a book in a subject of donor's choice
- Name listed on webpage, with name of book that is linked to TOPCAT

President's Circle Library Society Member (\$1,000) includes:

- All Gold Membership benefits
- \$500 of this will automatically go into a collections endowment
- Name placed on donor wall
- Guest passes for special events

Ask us about becoming a Lifetime Member!

Mission

WKU Libraries' mission is to contribute significantly to the pursuit and application of knowledge through providing access to, delivery of, and use of quality information. In order to meet and exceed this mission, we depend on financial support from alumni and friends who recognize the values of University Libraries and the services we provide. For more information on how you can support the Libraries and Museum, call Carrie Barnette at 270-745-7056.