

1973

Industrial Resources: Crittenden County - Marion

Kentucky Library Research Collections
Western Kentucky University, spcol@wku.edu

Follow this and additional works at: https://digitalcommons.wku.edu/crittenden_cty

 Part of the [Business Administration, Management, and Operations Commons](#), [Growth and Development Commons](#), and the [Infrastructure Commons](#)

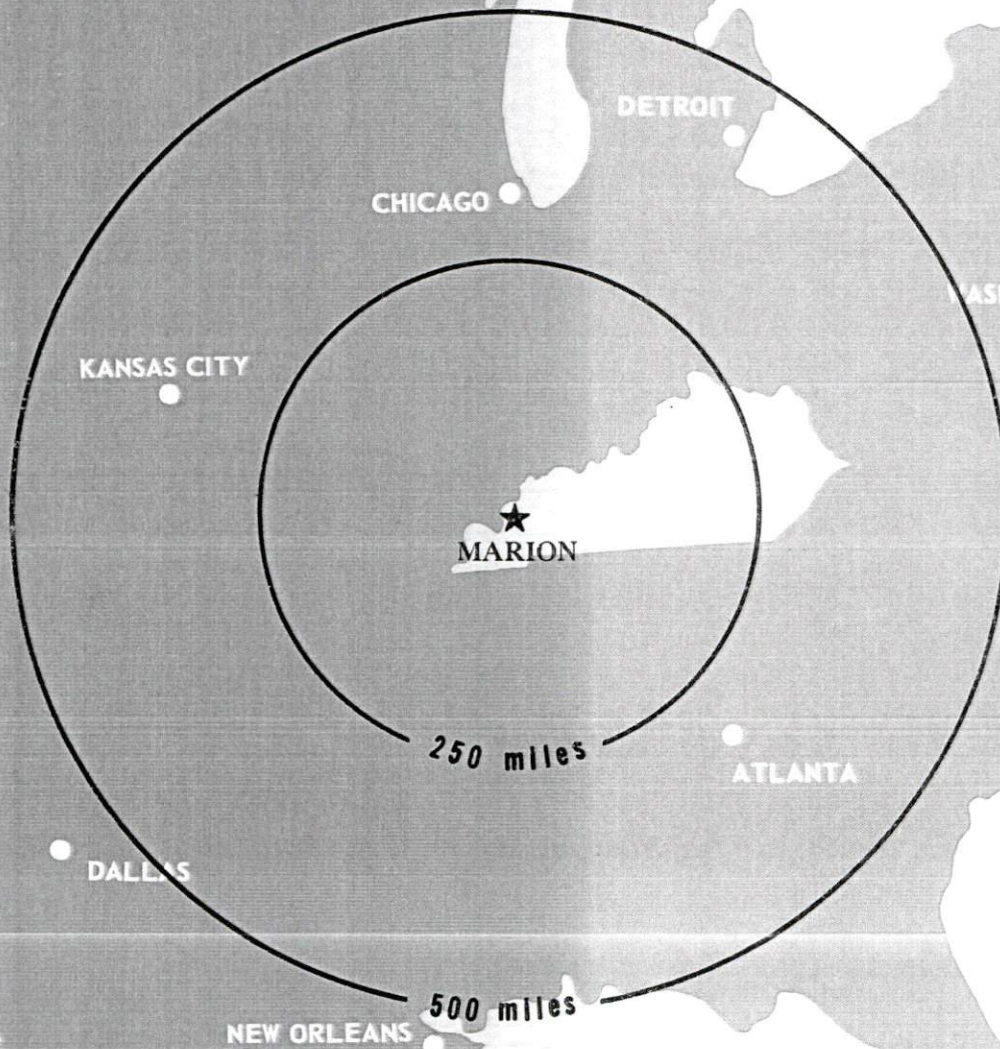
Recommended Citation

Kentucky Library Research Collections, "Industrial Resources: Crittenden County - Marion" (1973). *Crittenden County*. Paper 10.
https://digitalcommons.wku.edu/crittenden_cty/10

This Report is brought to you for free and open access by TopSCHOLAR®. It has been accepted for inclusion in Crittenden County by an authorized administrator of TopSCHOLAR®. For more information, please contact topscholar@wku.edu.

INDUSTRIAL RESOURCES

MARION KENTUCKY



CRITTENDEN COUNTY, KENTUCKY

MARION INDUSTRIAL SITES

1973

MARION INDUSTRIAL SITES

For more information about the following sites, contact John Ramsey, Kentucky Utilities, Marion, Kentucky; or the Kentucky Department of Commerce, Capital Plaza Office Tower, Frankfort, Kentucky.

SITE # 1: ACREAGE: 50 acres
LOCATION: Adjoins southern city limits of Marion
HIGHWAY ACCESS: Paved access road from U.S. 641 at western boundary of site
RAILROADS: Illinois Central Railroad borders eastern boundary of site
WATER: City of Marion Water Service
SIZE LINE: 8-inch line on site
GAS: Western Kentucky Gas Company
SIZE MAIN: 4-inch main approximately 620 feet east of site
ELECTRICITY: Kentucky Utilities Company
SEWERAGE: City of Marion Sewer Service
SIZE LINE: 15-inch line on site
OPTIONED BY: Marion Businessmen's Association

SITE # 2: ACREAGE: 44 acres
LOCATION: Within southern city limits of Marion
HIGHWAY ACCESS: Paved access road to U.S. 641 and Kentucky 91
RAILROADS: Illinois Central Railroad along eastern boundary of site
WATER: City of Marion Water Service
SIZE LINE: 8 and 12 inch lines on site
GAS: Western Kentucky Gas Company
SIZE MAIN: 4-inch main approximately 600 feet east of site
ELECTRICITY: Kentucky Utilities Company
SEWERAGE: City of Marion Water Service
SIZE LINE: 15-inch line on site
OPTIONED BY: Marion Businessmen's Association

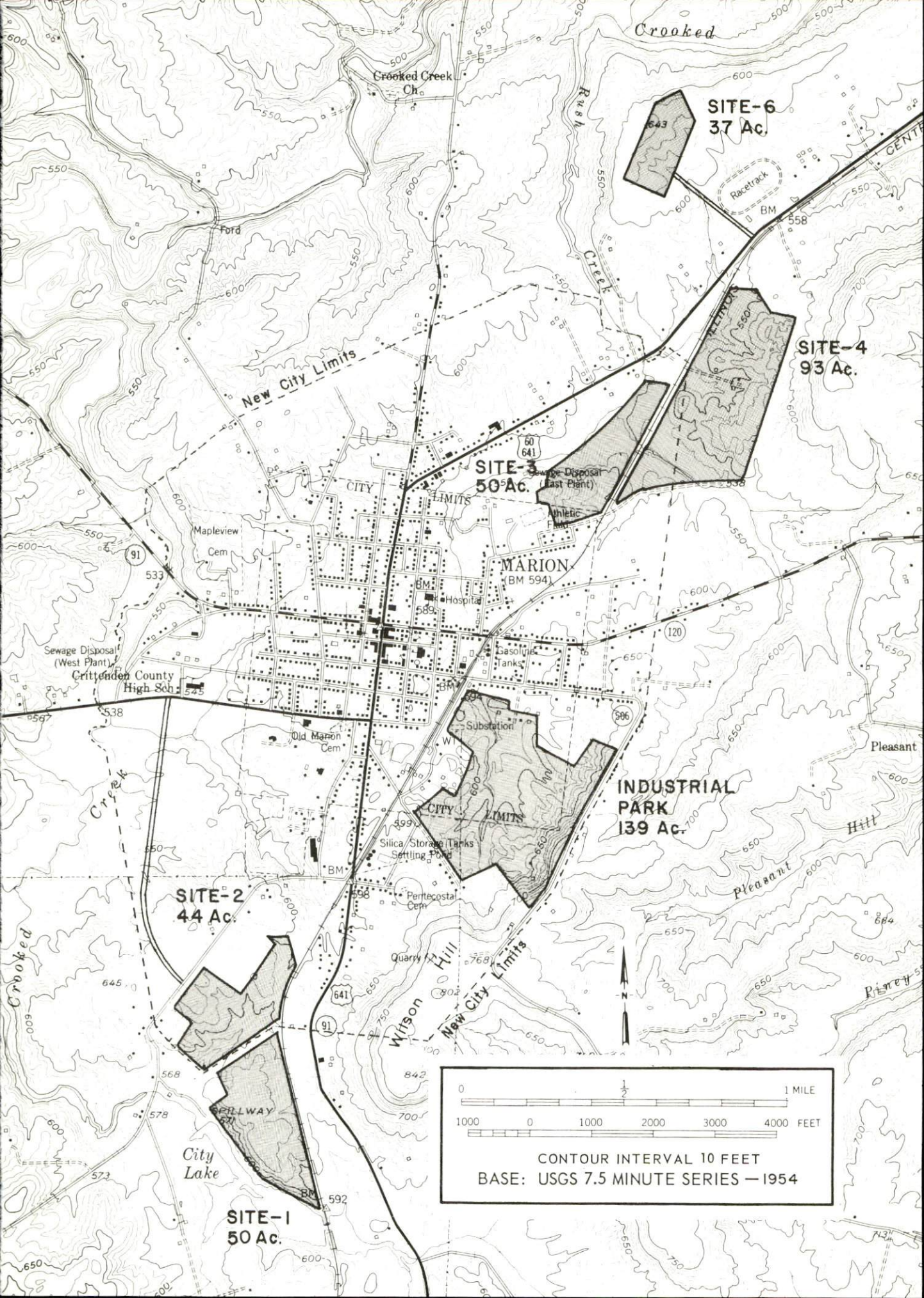
SITE # 3: ACREAGE: 50 acres
LOCATION: Within northeast city limits of Marion
HIGHWAY ACCESS: U.S. 60 approximately 300 feet from northwest corner of site
RAILROADS: Illinois Central Railroad along eastern boundary
WATER: City of Marion Water Service
SIZE LINE: 8-inch line within 200 feet of site
GAS: Western Kentucky Gas Company
SIZE MAIN: 4-inch main within 200 feet of site
ELECTRICITY: Kentucky Utilities Company
SEWERAGE: City of Marion Sewer Service
SIZE LINE: 15-inch line on site
OPTIONED BY: Marion Businessmen's Association

SITE # 4: ACREAGE: 93 acres
LOCATION: Partially within northeast city limits of Marion
HIGHWAY ACCESS: Unpaved access road to U.S. 60
RAILROADS: Illinois Central Railroad along western boundary of site
WATER: City of Marion Water Service
SIZE LINE: 8-inch line within 200 feet of site
GAS: Western Kentucky Gas Company
SIZE MAIN: 4-inch main approximately 880 feet west of site
ELECTRICITY: Kentucky Utilities Company
SEWERAGE: City of Marion Sewer Service
SIZE LINE: 8-inch on site
OPTIONED BY: Marion Businessmen's Association

SITE # 6: ACREAGE: 37 acres
LOCATION: One-half mile north of Marion City limits
HIGHWAY ACCESS: U.S. 60 one-half mile southeast of site via unpaved access road
RAILROADS: Not rail served
WATER: City of Marion Water Service
SIZE LINE: 8-inch line on site
GAS: Western Kentucky Gas Company
SIZE MAIN: 4-inch main approximately 2800 feet south of site
ELECTRICITY: Kentucky Utilities Company
SEWERAGE: City of Marion Sewer Service
SIZE LINE: 8-inch line on site
OPTIONED BY: Marion Businessmen's Association

Industrial Park

ACREAGE: 139 acres
LOCATION: Within eastern city limits of Marion
ZONING: Industrial
HIGHWAY ACCESS: Access to U.S. 641 and Kentucky 120; East boundary of site adjacent to Kentucky 506
RAILROADS: Illinois Central Railroad borders northwestern edge of park
WATER: City of Marion Water Service
SIZE LINE: 8-inch line on site
GAS: Western Kentucky Gas Company
SIZE MAIN: 2-inch main within 100 feet of site
ELECTRICITY: Kentucky Utilities Company
SEWERAGE: City of Marion Sewer Service
SIZE LINE: 8-inch line on site
OPTIONED BY: Marion Businessmen's Association



Crooked

Crooked Creek Ch.

SITE-6
37 Ac.

SITE-4
93 Ac.

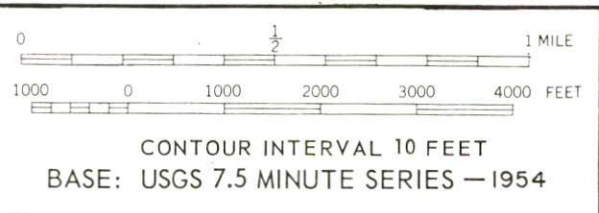
SITE-3
50 Ac.

MARION
BM 594

INDUSTRIAL PARK
139 Ac.

SITE-2
44 Ac.

SITE-1
50 Ac.



INDUSTRIAL RESOURCES

MARION, KENTUCKY

Prepared by

The Kentucky Department of Commerce

in cooperation with

The Marion Businessmen's Association

1973

This copy has been prepared by the Kentucky Department of Commerce,
Division of Research and Planning, and the cost of printing paid from
state funds.

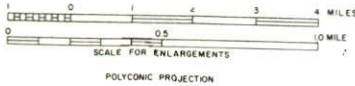
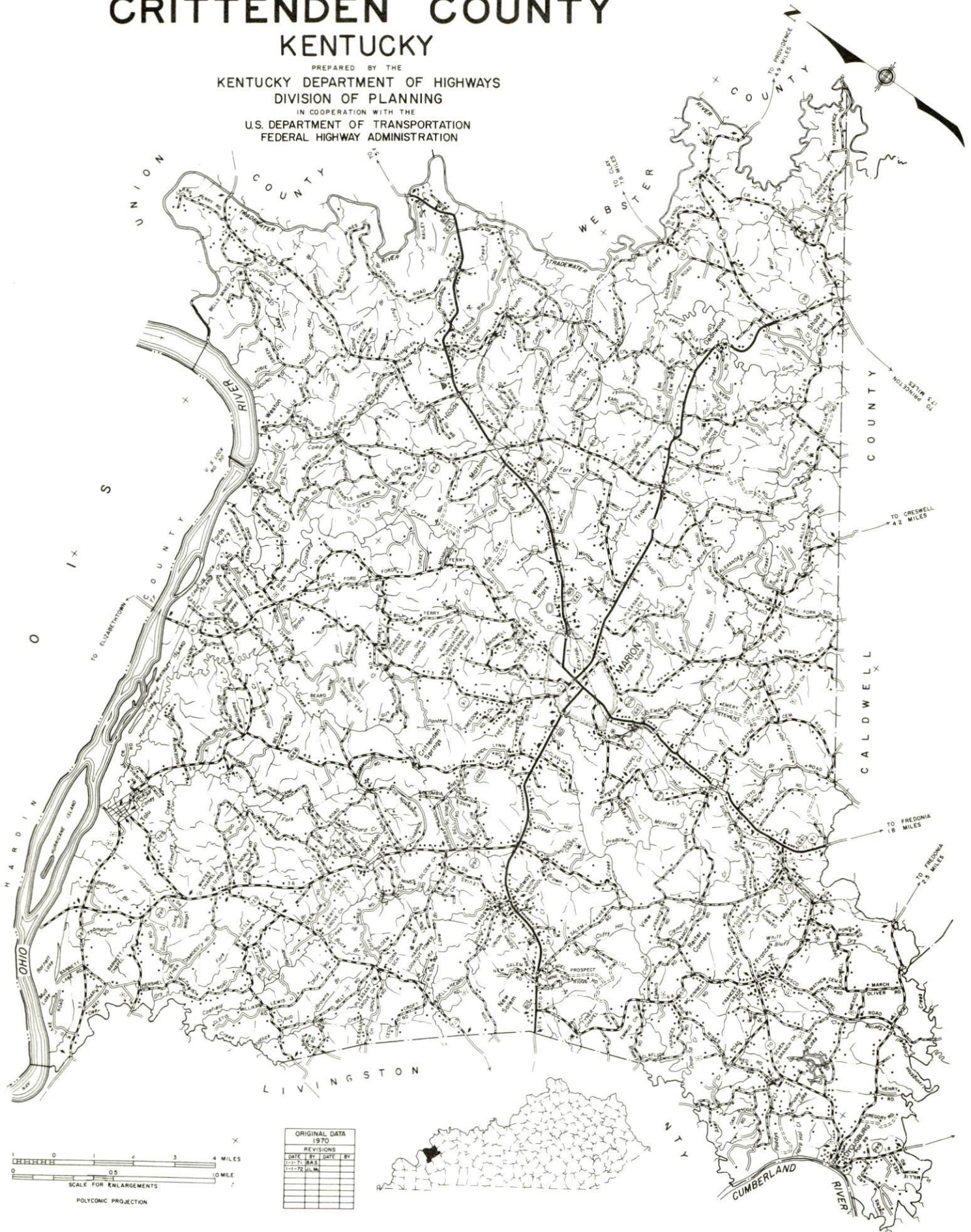
TABLE OF CONTENTS

<u>Chapter</u>	<u>Page</u>
INDUSTRIAL SITES	i
MARION, KENTUCKY - A RESOURCE PROFILE	1
THE LABOR MARKET	4
Population Trends	4
General Employment Characteristics, 1971	4
Manufacturing Employment Trends by Industry.	4
Marion Manufacturing Firms, Their Products and Employment.	5
Wages	5
Labor Organizations	5
Current and Future Labor Supply	5
Per Capita Personal Income	5
TRANSPORTATION	6
Rail	6
Truck Service	6
Air	7
Bus	7
Taxi	7
Rental Services.	7
POWER AND FUEL	8
Electricity	8
Natural Gas	8
Other Fuels	8
WATER AND SEWERAGE	9
Water	9
Sewerage	9
LOCAL GOVERNMENT	11
City	11
County.	11
Assessed Value of Property, 1972	11

<u>Chapter</u>	<u>Page</u>
Local General Property Tax Rates Per \$100 of Assessed Valuation, 1972.	11
Utilities Gross Receipts Tax for Schools	11
Planning and Zoning	12
Safety	12
Police	12
Fire	12
Rescue Service	12
Sanitation	12
 EDUCATION	 13
Public Schools	13
Vocational Schools	13
Colleges and Universities	14
 HEALTH.	 15
Hospitals	15
Nursing Homes.	15
Public Health	15
 OTHER LOCAL FACILTIES	 17
Communications	17
Library Services	17
Religious Institutions	17
Financial Institutions	18
Hotels and Motels	18
Clubs and Organizations.	18
 RECREATION	 19
Local	19
Area	19
 AGRICULTURE - NATURAL RESOURCES - CLIMATE	 20
Agriculture	20
Natural Resources	20
Climate	20
 HISTORY.	 21

GENERAL HIGHWAY MAP CRITTENDEN COUNTY KENTUCKY

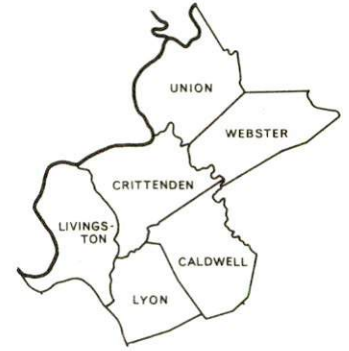
PREPARED BY THE
KENTUCKY DEPARTMENT OF HIGHWAYS
DIVISION OF PLANNING
IN COOPERATION WITH THE
U.S. DEPARTMENT OF TRANSPORTATION
FEDERAL HIGHWAY ADMINISTRATION



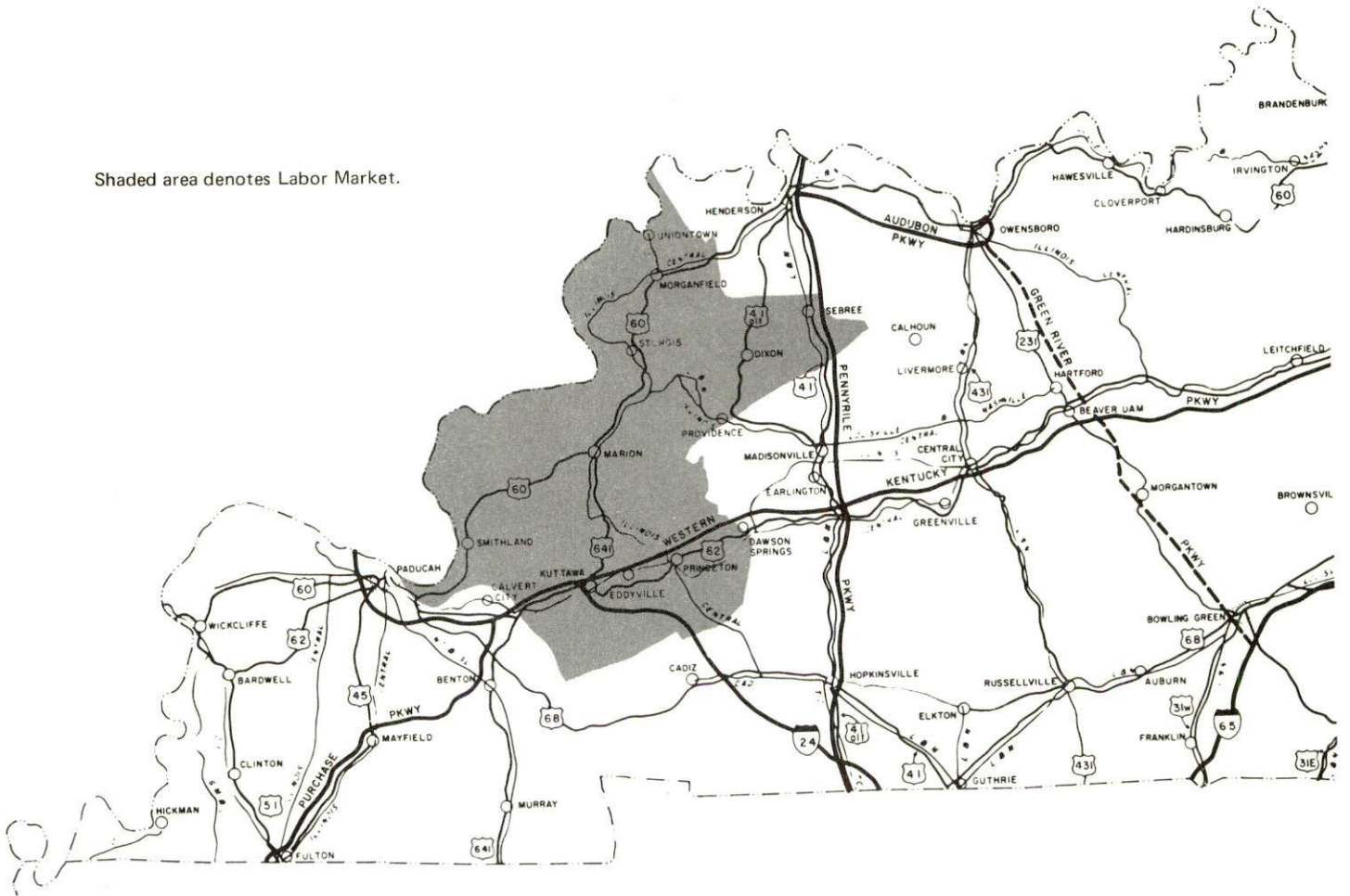
ORIGINAL DATA	
1970	
DATE	BY
01-71	BAJ
01-72	BAJ

POLYCONIC PROJECTION

MARION LABOR MARKET AREA



Shaded area denotes Labor Market.



MARION, KENTUCKY - A RESOURCE PROFILE

Marion, the county seat of Crittenden County, is located in the Pennyriple Region of Kentucky in the western part of the state. It is situated 188 miles southwest of Louisville, Kentucky, 229 miles west of Lexington, Kentucky, 143 miles north of Nashville, Tennessee, and 213 miles east of St. Louis, Missouri. The 1970 population of Marion was 3,008.

Crittenden County covers a land area of 365 square miles. In 1970, Crittenden County had a population of 8,493.

The Economic Framework

Total employment in Crittenden County averaged 2,630 in 1971 with manufacturing providing 550 of these jobs, agriculture 490, trade and services 391 and government 310. Since 1961, manufacturing employment has increased 146 percent, or 358 new jobs. Major industrial products are electro-magnetic relays and specialized business forms.

Per capita income in the county for 1970 was \$2,212. Since 1960 per capita personal income has increased approximately 145 percent.

In the Marion labor market area, which includes Crittenden and its five surrounding counties, total employment in 1971 averaged 19,880 with manufacturing providing 3,060 of these jobs, agriculture 3,140, government 2,400 and trade and services 3,880. Area manufacturing employment has increased 122 percent since 1961 with sharpest gains in the electrical machinery and metal products industries.

Despite important industrial gains in recent years, the area still has a deficit of 3,017 manufacturing jobs when measured against the national industrial employment-population ratio. This indicates an area where the potential for additional manufacturing growth is excellent.

Resources for Growth

1. There is a current estimated labor supply of 7,790 men and 5,750 women available for industrial jobs in the labor market area. In addition, 3,030 young men and 2,910 young women will become 18 years of age by 1978 and potentially available for work.

2. Marion is served by the Illinois Central Gulf Railroad. U. S. Highway 60 and the Western Kentucky Parkway, 22 miles to the south, provide good highway access. Commercial air service is available at Barkley Field near Paducah, 45 miles away. Marion is served by five truck lines.

3. Electricity is available in large quantity from the Kentucky Utilities Company and Henderson-Union RECC. Natural gas service is provided by Western Kentucky Gas Company.

In Marion and the surrounding area, there are five distributors of propane and butane, and four distributors of distillate fuel oil.

4. Marion has five sites and an industrial park available for industrial use.

5. There are four community colleges and one university within a 70-mile radius of Marion.

The nearest state vocational-technical school is located at Madisonville, 39 miles from Marion. The school offers fifteen courses.

Community Programs for Improvement

Three new businesses recently opened in Marion and two businesses have renovated their facilities.

A new dentist's office is being constructed.

A new hospital building and maintenance shop have recently been completed.

Several city-maintained streets have recently been resurfaced.

Water and sewerage service is being expanded to serve additional areas of Marion.

The Cerro Corporation is in the process of opening a new fluorspar mine in southwest Crittenden County.

The Crittenden County School System has recently painted three school buildings and installed new bleachers at the Crittenden County High School football field.

Recreation, Entertainment and Livability

Recreational facilities in the Marion area are excellent as well as plentiful. There are four state resort parks within 65 miles of Marion: Kenlake State Resort Park near Hardin, Kentucky Dam Village State Resort Park near Gilbertsville, Pennyrile Forest State Resort Park near Dawson Springs, and Lake Barkley State Resort Park near Cadiz. Facilities and recreational activities at these parks include a lodge, cottages, camping facilities, fishing, boating and boat rentals, horseback riding, hiking trails, swimming pool, beach, golf course, tennis, shuffleboard, playground, picnic area, and supervised recreation. In addition, John James Audubon State Park is located at Henderson, 54 miles away.

The Land Between the Lakes National Recreation Area between Lake Barkley and Kentucky Lake is one of the largest outdoor recreation areas in the nation. Under development by the Tennessee Valley Authority, it offers excellent opportunities for fishing, hunting, camping, boating, hiking, and nature study.

Two annual thoroughbred and harness racing meets are held at Henderson, 54 miles away.

THE LABOR MARKET

POPULATION TRENDS ^{1/}

Area	Population			Percent Change	
	1970	1960	1950	1960-70	1950-60
Marion	3,008	2,468	2,375	+21.9	+ 3.9
Labor Market Area	63,994	63,455	68,502	+ 0.8	- 7.4
Crittenden County	8,493	8,648	10,818	- 1.8	-20.1
Caldwell County	13,179	13,073	13,199	+ 0.8	- 1.0
Livingston County	7,596	7,029	7,184	+ 8.1	- 2.2
Lyon County	5,562	5,924	6,853	- 6.1	-13.6
Union County	15,882	14,537	14,893	+ 9.3	- 2.4
Webster County	13,282	14,244	15,555	- 6.8	- 8.4

GENERAL EMPLOYMENT CHARACTERISTICS, 1971 ^{2/}

Major Employment Group	Employment	
	Crittenden County	Labor Market Area
TOTAL	2,630	19,880
Agricultural	490	3,140
Nonagricultural	2,140	16,740
Manufacturing	550	3,062
Government	310	2,400
Trade and Services	391	3,880

MANUFACTURING EMPLOYMENT TRENDS BY INDUSTRY
SEPTEMBER 1971 AND 1961 ^{3/}

Industry	Crittenden County			Labor Market Area		
	1971	1961	% Change	1971	1961	% Change
TOTAL	602	244	+146.7	3,753	1,690	+ 122.1
Food & Kindred Products	0	0	0	57	59	- 3.4
Apparel, Textiles, Leather	0	0	0	767	743	+ 3.2
Lumber, Furniture	7	37	- 81.1	109	199	- 45.2
Printing & Publishing, Paper	159	135	+ 17.8	406	339	+ 1.5
Chemicals, Petroleum & Coal, Rubber	0	23	--	210	91	+ 130.8
Stone, Clay & Glass	18	43	- 58.1	33	181	- 81.8
Machinery, Metal Products, Equipment	418	0	--	2,171	72	+2915.3
Other	0	6	--	0	6	--

MARION MANUFACTURING FIRMS,
THEIR PRODUCTS AND EMPLOYMENT ^{4/}

<u>Firm</u>	<u>Product</u>	<u>Employment</u>		
		<u>Total</u>	<u>Male</u>	<u>Female</u>
Alexander Stone Co., Inc.	Agricultural lime	35	35	0
Contractors Material Co.	Bituminous concrete	6	5	1
Conyer Hardwood Lumber Co.	Lumber	2	2	0
Crittenden Press	Newspaper, letterpress and offset printing	6	4	2
Marion Machine Works	Machine shop	17	15	2
Moore Business Forms, Inc.	Specialized business forms	147	70	77
Potter and Brumfield	Electro-magnetic relays	407	100	307
Turner and Conyer Lumber Co., Inc.	Lumber, clay pipe spacers, pallets, boxes	42	40	2

WAGES

Wage information will be provided, upon request, by the Kentucky Department of Commerce, Division of Research and Planning.

LABOR ORGANIZATIONS

At present, no unions represent manufacturing workers in Marion.

CURRENT AND FUTURE LABOR SUPPLY
MARION LABOR MARKET AREA

<u>Area</u>	<u>Current Labor Supply, 1972 ^{5/}</u>			<u>Future Labor Supply by 1978 ^{6/}</u> <u>(Becoming 18 Years of Age)</u>		
	<u>Total</u>	<u>Male</u>	<u>Female</u>	<u>Total</u>	<u>Male</u>	<u>Female</u>
Labor Market Area	13,539	7,788	5,751	5,941	3,029	2,912
Crittenden County	1,415	700	715	791	430	361
Caldwell County	2,561	1,220	1,341	1,181	594	587
Livingston County	1,516	716	800	711	353	358
Lyon County	1,588	1,304	284	416	211	205
Union County	3,750	2,489	1,261	1,540	793	747
Webster County	2,709	1,359	1,350	1,302	648	654

PER CAPITA PERSONAL INCOME ^{7/}

<u>Area</u>	<u>1970*</u>	<u>1960</u>	<u>% Change</u>
Crittenden County	\$2,212	\$ 905	+144.4
Labor Market Area Range	\$3,071 to 1,751	\$1,750 to 755	N.A.
Kentucky	3,019	1,573	+ 91.9

*Unadjusted for commuting.

TRANSPORTATION

Rail

Line serving Marion - Illinois Central Gulf Railroad
 Services - Freight, siding space, switching facilities

RAILWAY TRANSIT TIME FROM MARION, KENTUCKY, TO: ^{8/}

City	No. of Days		City	No. of Days	
	CL			CL	
Atlanta, Ga.	4		Los Angeles, Calif.	6	
Birmingham, Ala.	3		Louisville, Ky.	2	
Chicago, Ill.	3		Nashville, Tenn.	2	
Cincinnati, Ohio	3		New Orleans, La.	3	
Cleveland, Ohio	5		New York, N. Y.	5	
Detroit, Mich.	4		Pittsburgh, Pa.	4	
Knoxville, Tenn.	3		St. Louis, Mo.	3	

Truck Service

Company

Home Office

A & H Truck Line, Inc.	Evansville, Indiana
Harper Truck Service	Paducah, Kentucky
McLean Trucking Company	Winston-Salem, North Carolina
Tennessee Cartage Co., Inc.	Nashville, Tennessee
United Parcel Service	Louisville, Kentucky

HIGHWAY MILES AND TRUCK TRANSIT TIME IN DAYS FROM
 MARION, KENTUCKY, TO SELECTED MARKET CENTERS

City	Highway Miles	Delivery Time ^{9/}		City	Highway Miles	Delivery Time	
		TL				TL	
Atlanta, Ga.	399	2		Los Angeles, Calif.	2,295	3	
Birmingham, Ala.	338	2		Louisville, Ky.	188	1	
Chicago, Ill.	414	1		Nashville, Tenn.	143	1	
Cincinnati, Ohio	310	1		New Orleans, La.	898	2	
Cleveland, Ohio	580	1		New York, N. Y.	957	2	
Detroit, Mich.	563	1		Pittsburgh, Pa.	639	2	
Knoxville, Tenn.	320	1		St. Louis, Mo.	213	1	

Air

	<u>Nearest Small Craft</u>	<u>Nearest Commercial</u>
Location:	Sturgis Airport Sturgis, 20 miles away	Barkley Field Paducah, 45 miles away
Runways:	3 paved	2 paved
Length:	5,000 ft., 5,000 ft., 5,000 ft.	6,500 ft., 4,000 ft.
Traffic		
Control:	Wind tee	Wind tee
Lighting:		Beacon, boundary, obstruction, runway lights; runway end identification lights
Services:	80 and 100 octane, taxi	80 and 100 octane, jet fuel, taxi, limousine, U-Drive-It service, storage, major A & E repairs, Delta and Ozark Airlines

Bus

Southern Greyhound Bus Lines

Taxi

Three companies, 24-hour service

Rental Services

U-Haul trailers

POWER AND FUEL

Electricity

Company serving Marion - Kentucky Utilities Company

Source of power - Kentucky Utilities Company

Total generating capacity - 1,215,000 KW

Industrial rates furnished by - Kentucky Utilities Company, Industrial Development Department, Lexington, Kentucky 40507

Company serving Crittenden County - Henderson-Union RECC

Source of power - Big Rivers RECC

Total generating capacity - 400,000 KW

Industrial rates furnished by - Henderson-Union RECC, P. O. Box 18, Henderson, Kentucky 42420

Natural Gas

Company serving Marion - Western Kentucky Gas Company

Source of supply - Texas Gas Transmission Corporation

Size of transmission mains - 26 inches (supplier)

Distribution mains - 4 and 2 inches

Distribution pressure - 18 psi

Btu content - 1,000 per cubic foot

Specific gravity - .06

Rates - Contact Western Kentucky Gas Company, Owensboro, Kentucky 42301

Other Fuels

Propane and butane

Kengas - Marion, Fortner LP - Princeton, Union Gas Company - Sturgis and Morganfield, George Harris - Salem, Southern States - Clay

Fuel oils

Distillate fuel oil distributors - Gulf Heating Oil, Standard Oil Company, Texaco Petroleum Products - all located in Marion; Arco - Salem

Residual fuel oil - arrangements must be made with the refinery.

Low sulphur content coal - Available in Kentucky.

WATER AND SEWERAGE

Water

Company serving Marion - City of Marion Water Service
Source - Two lakes
Treatment plant capacity - 864,000 gpd
Average daily consumption - 350,000 gallons
Peak daily consumption - 400,000 gallons
Type treatment - Coagulation, rapid sand filtration, activated carbon, fluoridation, potassium permanganate, chlorination
Storage capacity - 950,000 gallons
Size mains - 4, 6, 8, and 12 inches
Average pressure - 120 psi

MONTHLY WATER RATES FOR WHOLESALE AND INDUSTRIAL CONSUMERS

Minimum Rate for first 2,000 gallons		\$1.50 per 1,000 gallons (Minimum Charge \$3.00)
Next	3,000 gallons	\$1.00 per 1,000 gallons
Next	10,000 gallons	.80 per 1,000 gallons
Next	10,000 gallons	.65 per 1,000 gallons
Next	25,000 gallons	.50 per 1,000 gallons
Next	50,000 gallons	.40 per 1,000 gallons
All over	100,000 gallons	.28 per 1,000 gallons

Surface water sources - Ohio and Tradewater Rivers
Average discharge - Ohio River unlimited and Tradewater River at Olney (neighboring Caldwell County) 318 cfs (30 years, USGS)
Expected ground water yield - 500 to 1,000 gpm along Ohio River; 50 to 200 gpm in west central and south central portions and along northeastern boundary; 5 to 50 gpm in central portion; 5 gpm or less along southeastern boundary

Sewerage

Company serving Marion - City of Marion Sewer Service
Design capacity - 1,000,000 gpd
Average daily flow - 250,000 gallons
Treatment - Primary and secondary
Type treatment - Aeration, clarifier, drying beds
Treated effluent discharged into - Crooked Creek
Size of sanitary mains - 15 inches; Size of storm mains - 12 inches

Rates -

The monthly sewer bill will be 90% of the monthly water bill,
as follows:

First	2,000 gallons	\$2.70 (Minimum Bill)
Next	3,000 gallons	.90 per 1,000 gallons
Next	10,000 gallons	.72 per 1,000 gallons
Next	10,000 gallons	.59 per 1,000 gallons
Next	25,000 gallons	.45 per 1,000 gallons
Next	50,000 gallons	.36 per 1,000 gallons
Over	100,000 gallons	.25 per 1,000 gallons

LOCAL GOVERNMENT

City

Structure - Mayor - 4-year term; 6 councilmen - 2-year terms
 Budget 1971-72 - General Fund \$104,895; Water and Sewer Fund \$181,421
 Fees and licenses - Business licenses range from \$1.50 to \$100 annually

County

Structure - County Judge - 4-year term; 8 magistrates - 4-year terms
 Budget 1971-72 - General Fund \$79,047; Road Fund \$34,035

Assessed Value of Property, 1972

<u>Classes of Property*</u>	<u>Marion</u>	<u>Crittenden County</u>
Real Estate and Tangibles	\$14,197,281	--
Real Estate	--	\$37,132,140
Tangibles	--	7,864,010
Public Service	1,259,313	4,667,172

Local General Property Tax Rates Per \$100 of Assessed Valuation, 1972 ^{10/}

<u>Taxing Unit**</u>	<u>Marion</u>	<u>Crittenden County</u>
State	\$.015	\$.015
County	.331	.331
School	.413	.413
City	.329	
Total	\$ 1.088	\$.759

Utilities Gross Receipts Tax for Schools

Crittenden County levies a 3 percent tax on utilities receipts for schools. This tax is paid by all consumers of utilities. Exempted are receipts from utilities services that are resold and the receipts from the sale of energy or energy producing fuels that exceed 3 percent of the cost of production in manufacturing, processing, mining or refining.

*Property assessed at 100 percent of fair value.

**Manufacturing machinery, raw materials inventories and goods in process inventories are not subject to local tax. State rate is only \$.15 per \$100.

Planning and Zoning

Joint agency - Marion-Crittenden County Planning Commission
Mandatory state codes enforced - Plumbing, National Fire Protection Association Code, National Building Code (for major buildings and residential construction containing more than 12 bedrooms per building)

Safety

<u>Police</u>	<u>Marion</u>	<u>Crittenden County</u>
Total staff	4 (part time)	3
Radio-patrol cars	1	1
Other equipment	Standard	Standard

Fire

American Insurance Association Fire Rating	7
Volunteers	15
Equipment:	
750 gpm pumper	1
500 gpm pumper	1

Rescue Service

Civil Defense Rescue Squad:
Number of volunteers - 30
Equipment - Pickup truck, portable small power generator, master fallout detector, citizens' band and short wave radio

Sanitation

Each residence and business is responsible for its own garbage disposal.

EDUCATION

Public Schools

Crittenden County

Total Enrollment	1,782
Elementary	1,267
High School	515
Student-Teacher Ratio	24-1
Elementary	26-1
High School	21-1
Percent High School Graduates to College	17.9
Current Expenditures Per Pupil (1971-72)	\$499.06
Bonded Indebtedness, June 30, 1972	\$248,000

Vocational Schools

Nearest State Vocational-Technical School

	Madisonville State Vocational-Technical School
Location	Madisonville
Miles Distant	39
Curriculum	Certified Lab Assistant Medical Assistant Medical Secretary Practical Nursing Radiologic Technology Surgical Technician Learning Lab Electronics (Communications) Auto Body Repair Auto Mechanics Carpentry Drafting Electricity Machine Shop Mine Maintenance

Colleges and Universities

<u>Name</u>	<u>Area - Within 70 Miles</u>		<u>Highest Degree</u>
	<u>Location</u>	<u>Enrollment</u>	<u>Conferred</u>
Paducah Community College	Paducah	1,161	Associate
Henderson Community College	Henderson	594	Associate
Madisonville Community College	Madisonville	356	Associate
Hopkinsville Community College	Hopkinsville	752	Associate
Murray State University	Murray	7,071	Masters

HEALTH

Hospitals

<u>General Hospital</u>	<u>Location</u>	<u>Beds</u>
Crittenden County Hospital	Marion	37

General hospital facilities - Laboratory, X-ray, emergency room, delivery room, nursery

Medical staff - 4 medical doctors, 8 registered nurses, 7 licensed practical nurses, graduate licensed practical nurse, dietitian, radiologist (part-time), pathologist (part-time)

Nursing Homes

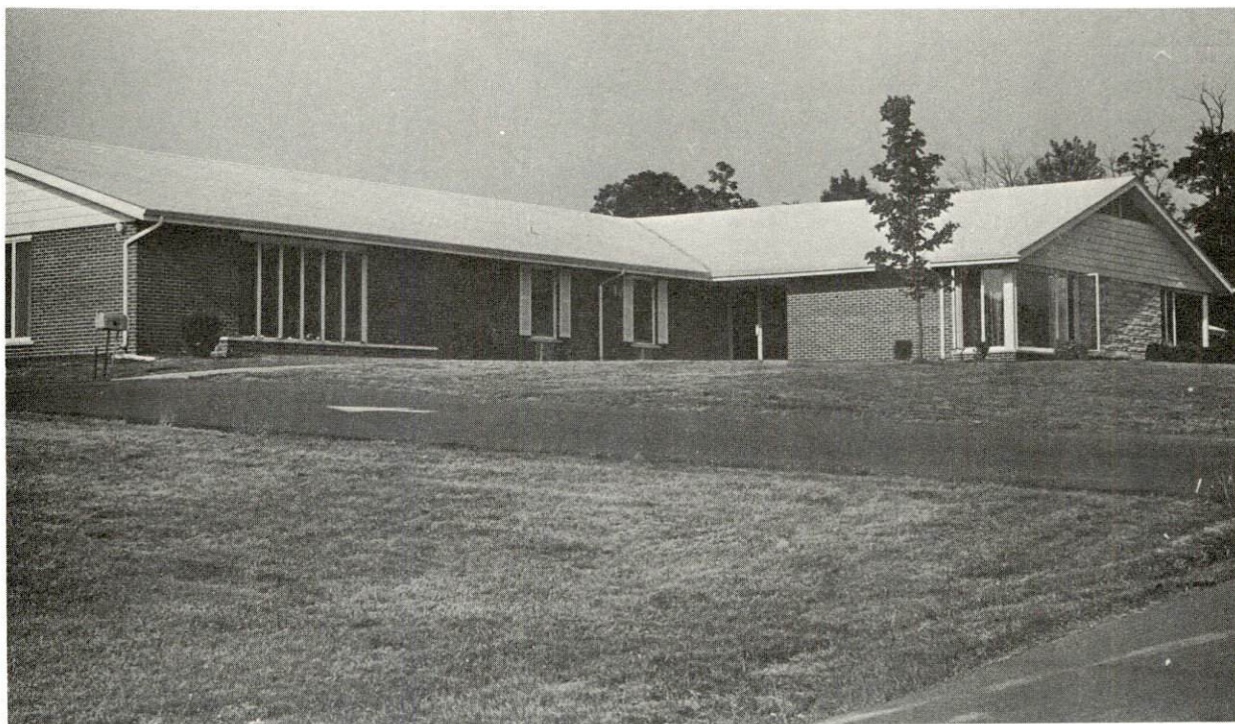
	<u>Number</u>	<u>Beds</u>
Personal care homes	1	52

Public Health

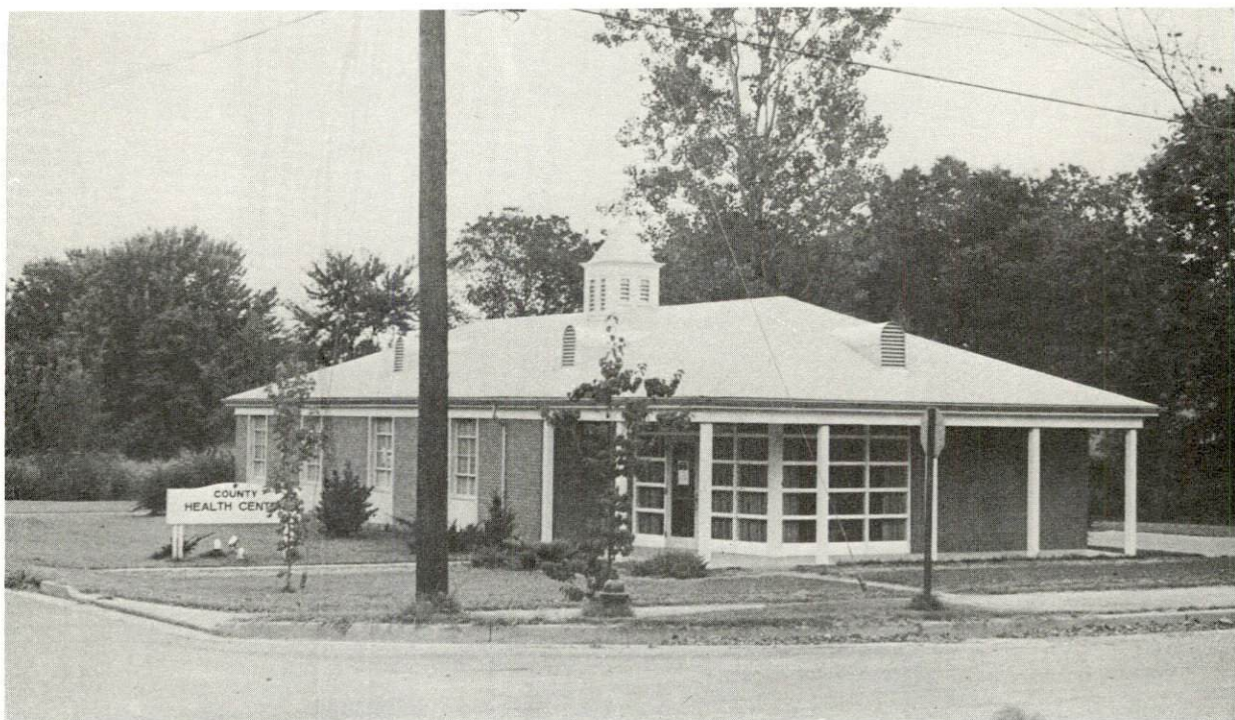
Facility - Crittenden County Health Department

Staff - Registered nurse, clerk, sanitarian (part-time), administrative assistant (part-time)

Budget 1972-73 - \$25,364



NURSING HOME



CRITTENDEN COUNTY HEALTH CENTER

OTHER LOCAL FACILITIES

Communications

Telephone - South Central Bell Telephone Company
Services - Standard

Telegraph - Western Union
Services - Standard

Postal - U. S. Post Office
Class - First
Mail received - Twice daily
Mail dispatched - Once daily

Newspapers - Crittenden Press
Weekly and circulation - 3,600
Other papers received from - Louisville and Paducah, Kentucky

Radio - WMJL
Stations received from - Henderson, Paducah, Princeton, Morganfield,
and Louisville, Kentucky; Clarksville and Nashville, Tennessee; St.
Louis and Cape Girardeau, Missouri; Harrisburg, Illinois; Evansville,
Indiana

Television -
Reception from - Paducah, Kentucky; Nashville, Tennessee; Harrisburg,
Illinois; St. Louis, Missouri
Kentucky Educational Television - Madisonville transmitter, Channel 35

Library Services

Public library - Crittenden County Public Library
Size collection - 15,000 volumes
Circulation, 1971 - 37,000
Services - Records, movie projector, bookmobile, slide and film strip
projector, record players

Religious Institutions

Number of churches - 13
Denominations - Baptist, Presbyterian, Methodist, Church of Christ,
Christian, Church of God, Pentecostal, Catholic

Financial Institutions

<u>Bank</u>	<u>Statement as of June 30, 1972</u>	
	<u>Assets</u>	<u>Deposits</u>
Farmers Bank & Trust Company	\$9,039,566	\$7,834,368
The Peoples Bank	4,773,293	4,375,108

Hotels and Motels

Total Number - 5
Units - 52

Clubs and Organizations

Business and Civic - Business Men's Association, Jaycees, Rotary,
Ministerial Association, Lions Club

Fraternal - Masonic Lodge, American Legion, Woodmen of the World,
Oddfellows

Women's - Federation of Women's Club, Eastern Star, American Legion
Auxiliary, Homemakers

Youth - 4-H, FFA, FBLA, Boy Scouts, Girl Scouts, Little League baseball,
Pewee League, Pony League, Little League football, FHA

Other - Town and Country Riding Club, Gun Club, Crittenden County
Historic Society

RECREATION

Local

Public Recreation Facilities

- Park - 1
- Playgrounds - 2
- Tennis court - 1
- Baseball diamonds - 2
- Football fields - 2
- Other - Riding ring, shuffleboard, archery, horseshoes

Private Recreation Facilities

- Country club - 1
- Golf course - 1
- Swimming pool - 1
- Movie theaters - 2
- Billiard parlor - 1

Tourist Attractions

- Bob Wheeler Museum
- B. E. Clements Mineral Display

Area (Within 65 miles)

- Kenlake State Resort Park
- Kentucky Dam Village State Resort Park
- Pennyrile Forest State Resort Park
- Lake Barkley State Resort Park
- John James Audubon State Park
- Land Between the Lakes National Recreation Area
- Ellis Park (Henderson)
- Audubon Raceway (Henderson)

AGRICULTURE - NATURAL RESOURCES - CLIMATE

Agriculture 11/

	<u>Crittenden County</u>	<u>Labor Market Area</u>
Total land area (acres)	233,600	1,258,240
Percent of area in farm land	64.4	66.5
Number of farms	755	4,089
Average size of farms (acres)	199.2	204.7
1964 value of all farm products	\$2,207,687	\$23,486,211
Value per farm	2,924	5,744
Total crop sales	597,656	8,745,789
Total livestock & livestock products	1,610,029	14,725,293
1969 agricultural production included:		
Burley tobacco (lbs.)	9,000	1,284,000
Corn (bu.)	654,000	8,493,000
Cattle and calves (number)	25,600	161,900
Hogs and pigs (number)	21,200	196,700
Milk production, 1968 (lbs.)	5,610,000	26,125,000

Natural Resources

Principal mineral resources	Limestone, fluorspar, zinc
Other mineral resources	Coal, petroleum, certain vein minerals
Acres of commercial forest land	87,200
Most abundant tree species	Red oak, white oak, hickory, yellow poplar, ash, sweet gum, hard maple

Climate 12/

	<u>Crittenden County</u>
Temperature	
Annual mean (30-year record)	57.0 degrees
Average annual 1971	56.9 degrees
Record highest, July, 1966 (11-year record)	104.0 degrees
Record lowest, January, 1963 (11-year record)	-18.0 degrees
Seasonal heating degree days (30-year record)	4,435
Precipitation	
Mean annual total (30-year record)	41.45 inches
Mean annual snow and sleet (31-year record)	13.30 inches
Total precipitation 1971	40.25 inches
Mean number days precipitation, (.01 inch or more) (31-year record)	114
Average number days thunderstorms (31-year record)	14
Prevailing winds (14-year record)	South-southwest

HISTORY

Crittenden County is located in the southwestern part of Kentucky in the state's Pennyrile Region. The county's northwestern border is formed by the Ohio River and the Illinois state line, while the Tradewater River flows along its northeastern edge. Cumberland River touches the southwestern corner. The land surface is rolling, and over 35 percent of its 365 square mile area is forested.

Crittenden became Kentucky's ninety-first county in 1842, its territory taken from Livingston County. It was named in honor of John J. Crittenden, a Kentucky Governor, U. S. Senator and U. S. Attorney General.

Marion, the county seat, was incorporated in 1844 and is located near the county's geographical center. It was named for General Francis Marion, the famous "Swamp Fox" of the Revolutionary War. Marion was the home of two U. S. Senators around the turn of the century--William J. Deboe, a Republican, and Ollie M. James, a Democrat.

In 1850 Crittenden County had 6,351 inhabitants. Population reached 10,818 by 1950, followed by a significant decline to 8,648 in 1960. This decline was almost checked by 1970, when the number of residents totaled 8,493. Marion had a 1970 population of 3,008.

Agriculture accounted for 490 of the county's 2,630 employed in 1971, with corn, cattle, hogs and milk the principal products. Manufacturing employment grew during the 1960's to 550 in 1971 with the greatest production in metal and paper products. Largest of the county's firms are Potter and Brumfield Company, which makes electro-magnetic relays, and Moore Business Forms, Inc., making specialized business forms.

SOURCES OF INFORMATION

- 1/ U. S. Department of Commerce, Bureau of the Census, Census of Population, 1950, 1960, 1970.
- 2/ Kentucky Department of Economic Security, Division of Research and Statistics.
- 3/ Kentucky Department of Economic Security, Number of Workers in Manufacturing Industries Covered by Kentucky Unemployment Insurance Law Classified by Industry and County, September 1961, September 1971.
- 4/ Kentucky Department of Commerce, 1973 Kentucky Directory of Manufacturers.
- 5/ Kentucky Department of Economic Security, Kentucky Labor Supply Estimates by County, January 1972.
- 6/ Kentucky Department of Commerce, Future Labor Supply by 1978.
- 7/ University of Kentucky, Office of Development Services and Business Research, Per Capita Income in Kentucky.
- 8/ Illinois Central Gulf Railroad, Chicago, Illinois.
- 9/ Harper Truck Service, Paducah, Kentucky
- 10/ Kentucky Department of Revenue, Kentucky Property Tax Rates, 1972.
- 11/ U. S. Department of Commerce, Bureau of the Census, Census of Agriculture, 1964. U. S. Department of Agriculture and Kentucky Department of Agriculture, Kentucky Agricultural Statistics, 1970.
- 12/ U. S. Department of Commerce, Environmental Science Services Administration, Climatological Data, 1971.

All other information was obtained from governmental offices, local businesses and organizations.