

1969

# Industrial Resources - Daviess County

Kentucky Library Research Collections  
Western Kentucky University, [spcol@wku.edu](mailto:spcol@wku.edu)

Follow this and additional works at: [https://digitalcommons.wku.edu/daviess\\_cty](https://digitalcommons.wku.edu/daviess_cty)



Part of the [Business Administration, Management, and Operations Commons](#), [Growth and Development Commons](#), and the [Infrastructure Commons](#)

---

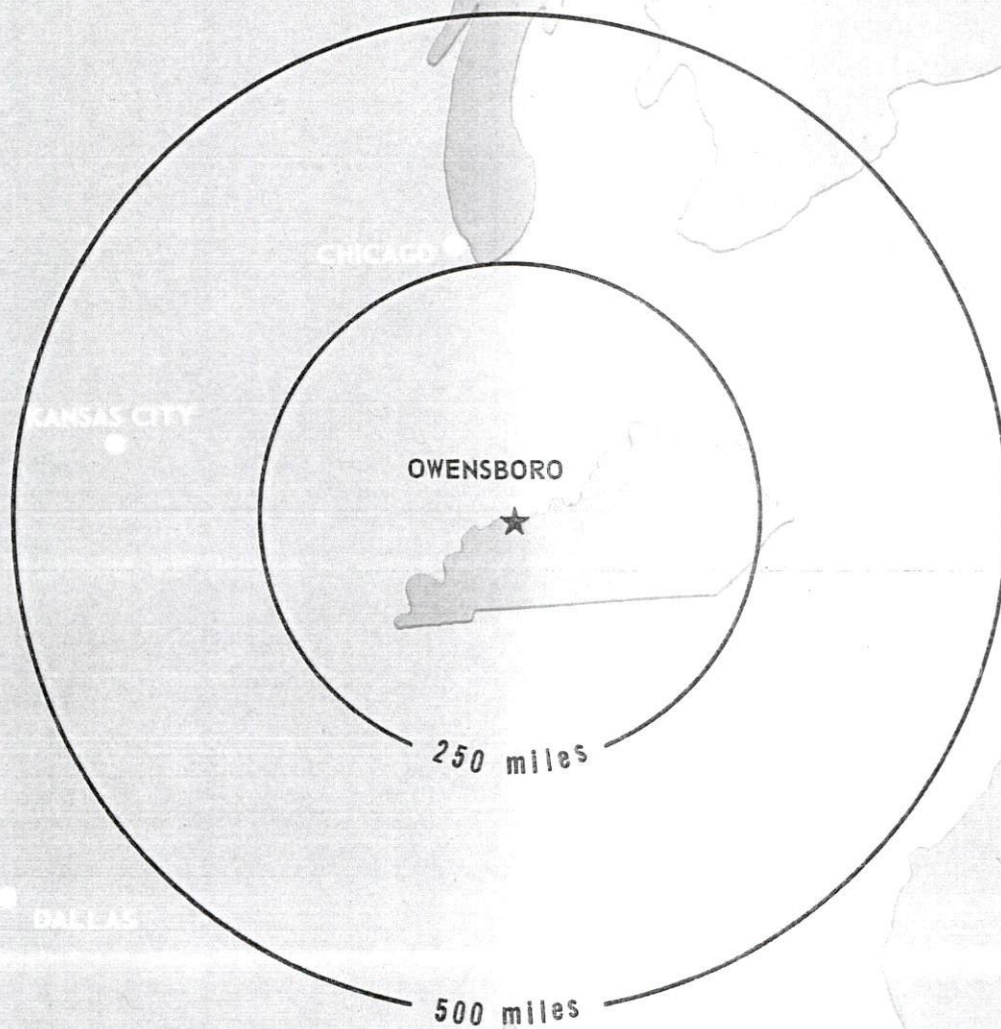
## Recommended Citation

Kentucky Library Research Collections, "Industrial Resources - Daviess County" (1969). *Daviess County*. Paper 12.  
[https://digitalcommons.wku.edu/daviess\\_cty/12](https://digitalcommons.wku.edu/daviess_cty/12)

This Report is brought to you for free and open access by TopSCHOLAR®. It has been accepted for inclusion in Daviess County by an authorized administrator of TopSCHOLAR®. For more information, please contact [topscholar@wku.edu](mailto:topscholar@wku.edu).

# INDUSTRIAL RESOURCES

## ***OWENSBORO, KENTUCKY***



Kentucky Library WKU

OWENSBORO INDUSTRIAL SITES

1969



## OWENSBORO INDUSTRIAL SITES

Cost per acre of the following sites will be furnished upon request by Leonard C. Neff, General Manager, Owensboro-Daviess County Industrial Foundation, Inc., P. O. Box 485, Owensboro, Kentucky 42301, Phone: 502 684-0441, or the Kentucky Department of Commerce.

### SITE #1: INDUSTRIAL PARK

ACREAGE AND TOPOGRAPHY: 129 acres  
LOCATION: Northwest of city and adjoining city limits  
ZONING: Industrial  
HIGHWAY ACCESS: Kentucky 331; 24-foot paved industrial access road to U.S. Highway 60  
RAILROAD: Louisville & Nashville Railroad lead track on the property  
WATER: Owensboro Municipal Utilities                      SIZE LINE: 12-inch  
GAS: Western Kentucky Gas Company                      SIZE LINE: 4- to 6-inch  
ELECTRICITY: Owensboro Municipal Utilities  
SEWERAGE: Owensboro Sewer Commission  
OWNED BY: Owensboro-Daviess County Industrial Foundation, Inc.

### SITE #2: ACREAGE AND TOPOGRAPHY: 73 $\frac{1}{2}$ acres, generally level

LOCATION: West of city on U.S. Highway 60  
ZONING: Industrial  
HIGHWAY ACCESS: U.S. Highway 60; Owensboro Beltline and Audubon Parkway (planned)  
RAILROAD: May be served by Louisville & Nashville Railroad  
WATER: Owensboro Municipal Utilities                      SIZE LINE: 12-inch  
GAS: Western Kentucky Gas Company                      SIZE LINE: 6-inch H.P.  
ELECTRICITY: Owensboro Municipal Utilities  
SEWERAGE: Owensboro Sewer Commission

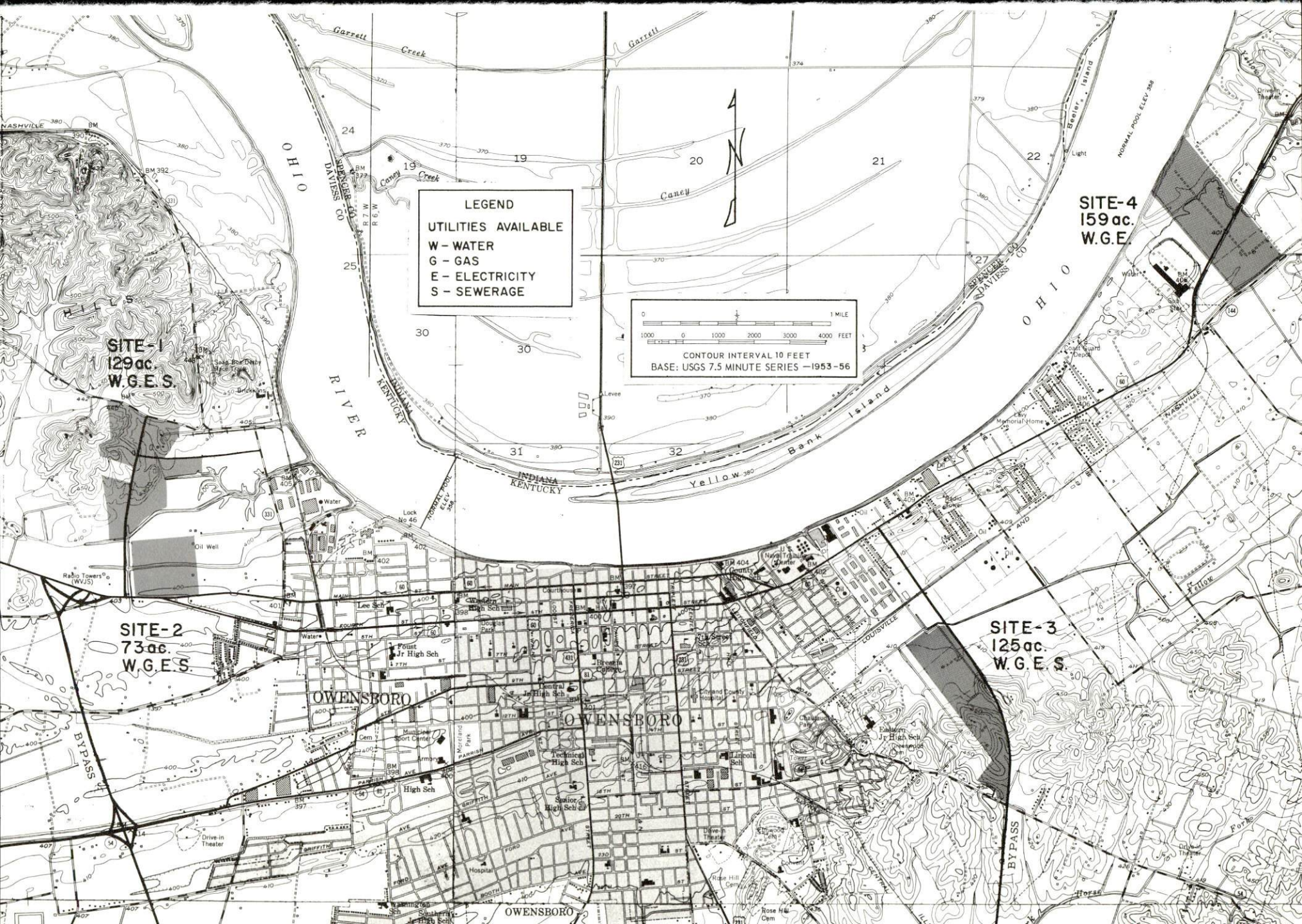
### SITE #3: ACREAGE AND TOPOGRAPHY: 125 acres

LOCATION: Southeast of city, one-fourth mile from city limits  
ZONING: Industrial  
HIGHWAY ACCESS: Kentucky 54; 3,200 feet from U.S. Highway 60  
RAILROAD: Louisville & Nashville Railroad lies 1,000 feet north of property.  
WATER: Owensboro Municipal Utilities                      SIZE LINE: 12-inch  
GAS: Western Kentucky Gas Company                      SIZE LINE: 6-inch  
ELECTRICITY: Owensboro Municipal Utilities  
SEWERAGE: 2,000 feet to lines of the Owensboro Sewer Commission  
OWNED BY: Glenmore Distilleries

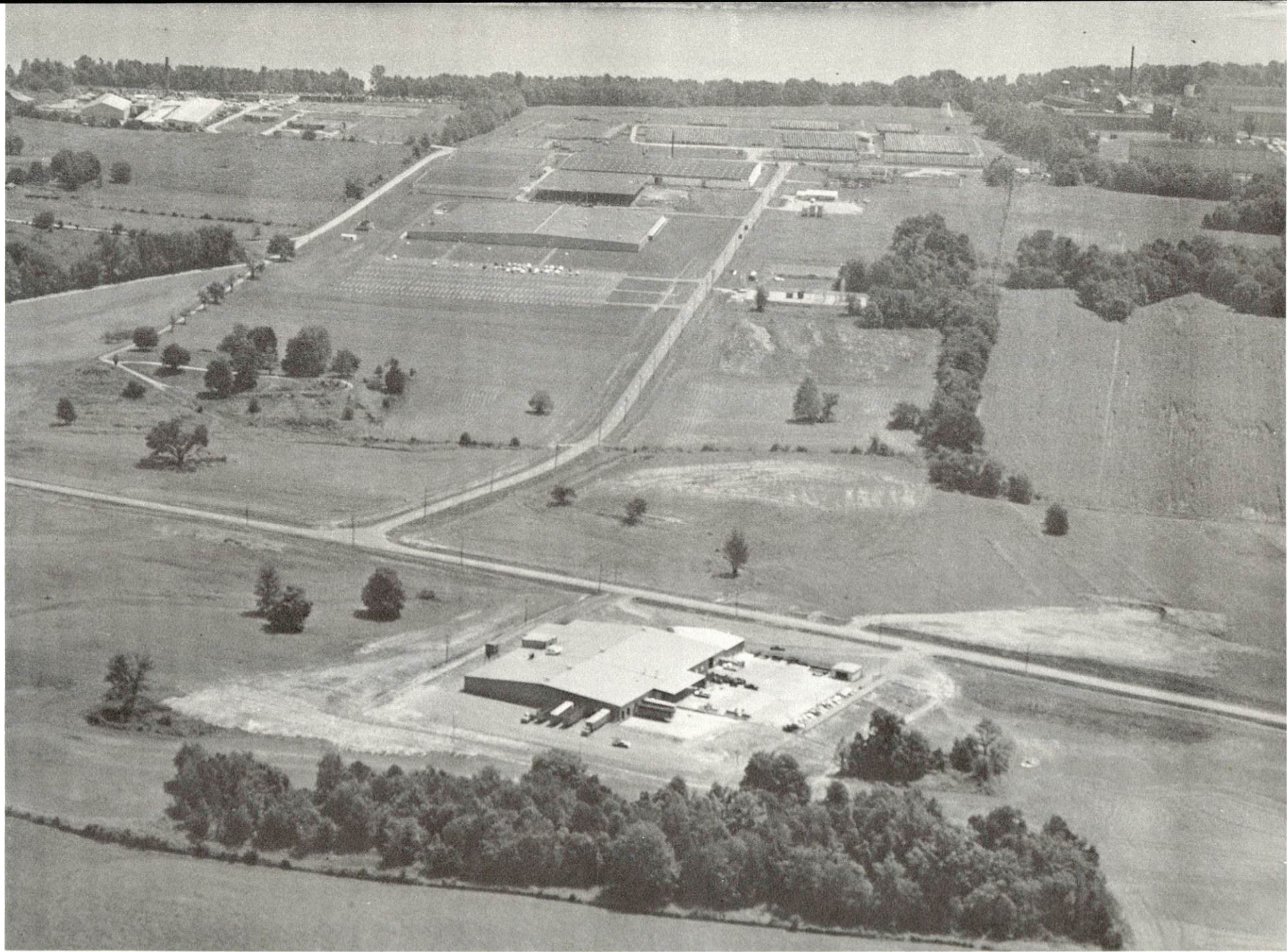
### SITE #4: ACREAGE AND TOPOGRAPHY: 159 $\frac{1}{2}$ acres

LOCATION: East of city about 3 1/2 miles  
ZONING: Industrial  
HIGHWAY ACCESS: U.S. Highway 60  
RAILROAD: Louisville & Nashville Railroad main line  
WATER: 3,500 feet to 12-inch city main; ground water supply abundant  
GAS: Western Kentucky Gas Company                      SIZE LINE: 8-inch  
ELECTRICITY: Rates can be furnished, upon request, by the Owensboro-Daviess County Industrial Foundation, Inc.  
SEWERAGE: Not served by city system  
UNDER OPTION TO: Owensboro-Daviess County Industrial Foundation, Inc.

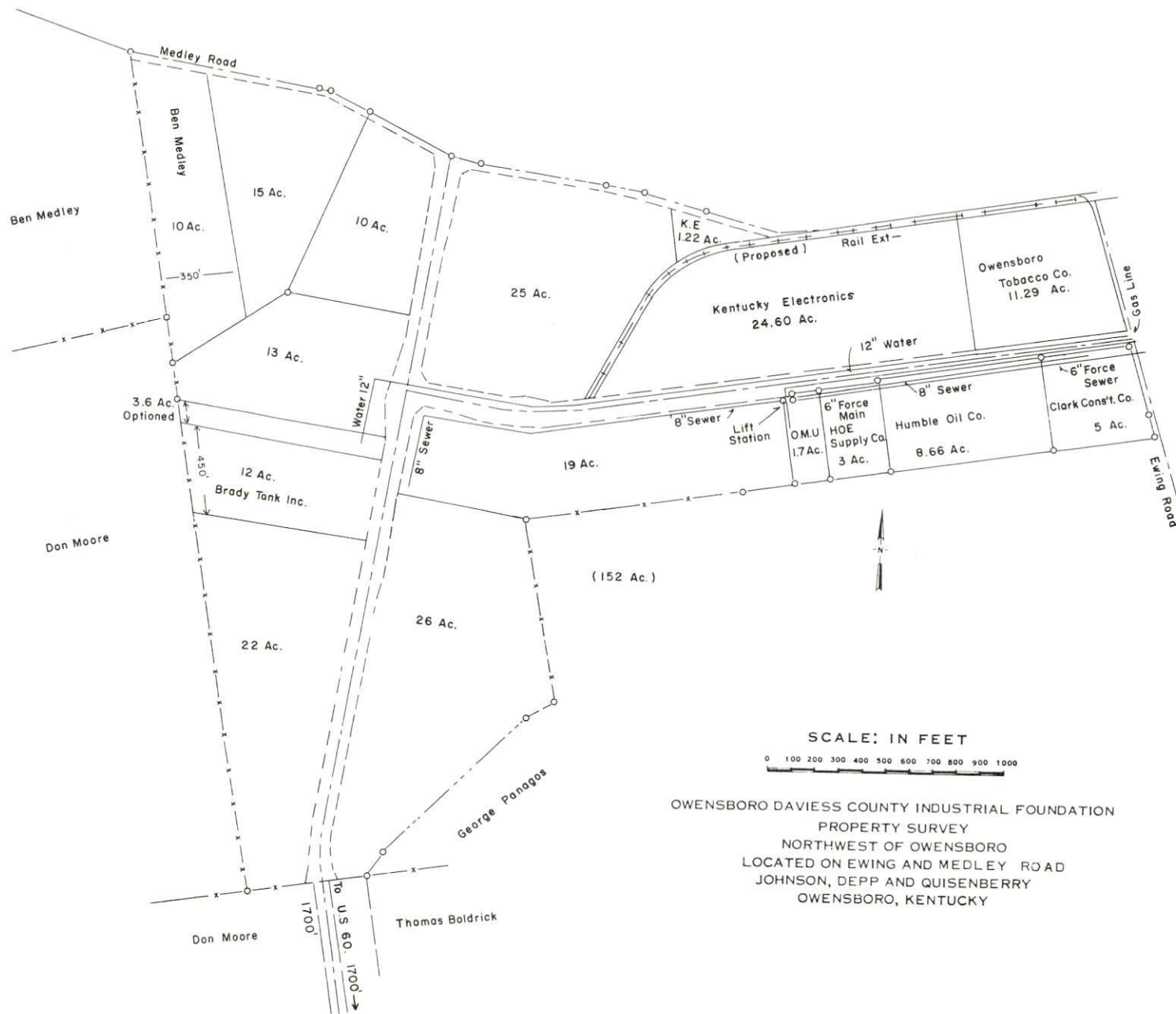








OWENSBORO INDUSTRIAL PARK





INDUSTRIAL RESOURCES  
OWENSBORO, KENTUCKY

Prepared by  
The Kentucky Department of Commerce  
in cooperation with  
The Owensboro-Daviess County Industrial Foundation, Inc.  
The Owensboro-Daviess County Chamber of Commerce

1969

This copy has been prepared by the Kentucky Department of Commerce,  
Division of Research and Planning, and the cost of printing paid from  
state funds.

## TABLE OF CONTENTS

<u>Chapter</u>	<u>Page</u>
INDUSTRIAL SITES . . . . .	i
OWENSBORO, KENTUCKY - A RESOURCE PROFILE . . . . .	1
THE LABOR MARKET . . . . .	4
Population Trends . . . . .	4
General Employment Characteristics. . . . .	4
Manufacturing Employment Trends by Industry . . . . .	4
Major Owensboro Manufacturing Firms with Products and Employment . . . . .	5
Wage Rates for Selected Occupations . . . . .	7
Labor Organizations . . . . .	8
Current and Future Labor Supply . . . . .	8
Total Personal Income . . . . .	8
Per Capita Personal Income. . . . .	8
EDUCATION . . . . .	9
Public Schools . . . . .	9
Parochial, Private and Special Schools . . . . .	9
Vocational Schools . . . . .	11
Colleges and Universities . . . . .	11
TRANSPORTATION . . . . .	13
Rail . . . . .	13
Truck Service . . . . .	13
Air. . . . .	14
Bus . . . . .	14
Taxi . . . . .	14
Rental Services . . . . .	14
POWER AND FUEL . . . . .	15
Electricity . . . . .	15
Natural Gas . . . . .	15



<u>Chapter</u>	<u>Page</u>
WATER AND SEWERAGE . . . . .	.18
Water . . . . .	.18
Sewerage . . . . .	.19
LOCAL GOVERNMENT . . . . .	.20
City . . . . .	.20
County . . . . .	.20
Assessed Value of Property - 1969 . . . . .	.20
Local General Property Tax Rates Per \$100 of	
Assessed Valuation - 1969 . . . . .	.20
Planning and Zoning . . . . .	.22
Safety . . . . .	.22
Police . . . . .	.22
Fire . . . . .	.22
Sanitation. . . . .	.22
HEALTH . . . . .	.23
Hospitals . . . . .	.23
Nursing Homes . . . . .	.23
Public Health . . . . .	.23
OTHER LOCAL FACILITIES . . . . .	.25
Communications. . . . .	.25
Library Services . . . . .	.25
Religious Institutions . . . . .	.25
Financial Institutions . . . . .	.26
Hotels and Motels . . . . .	.26
Clubs and Organizations . . . . .	.26
RECREATION. . . . .	.29
Local . . . . .	.29
Area. . . . .	.29
AGRICULTURE - NATURAL RESOURCES - CLIMATE . . . . .	.30
Agriculture. . . . .	.30
Natural Resources. . . . .	.30
Climate . . . . .	.30
HISTORY. . . . .	.31



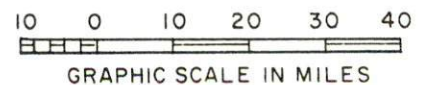
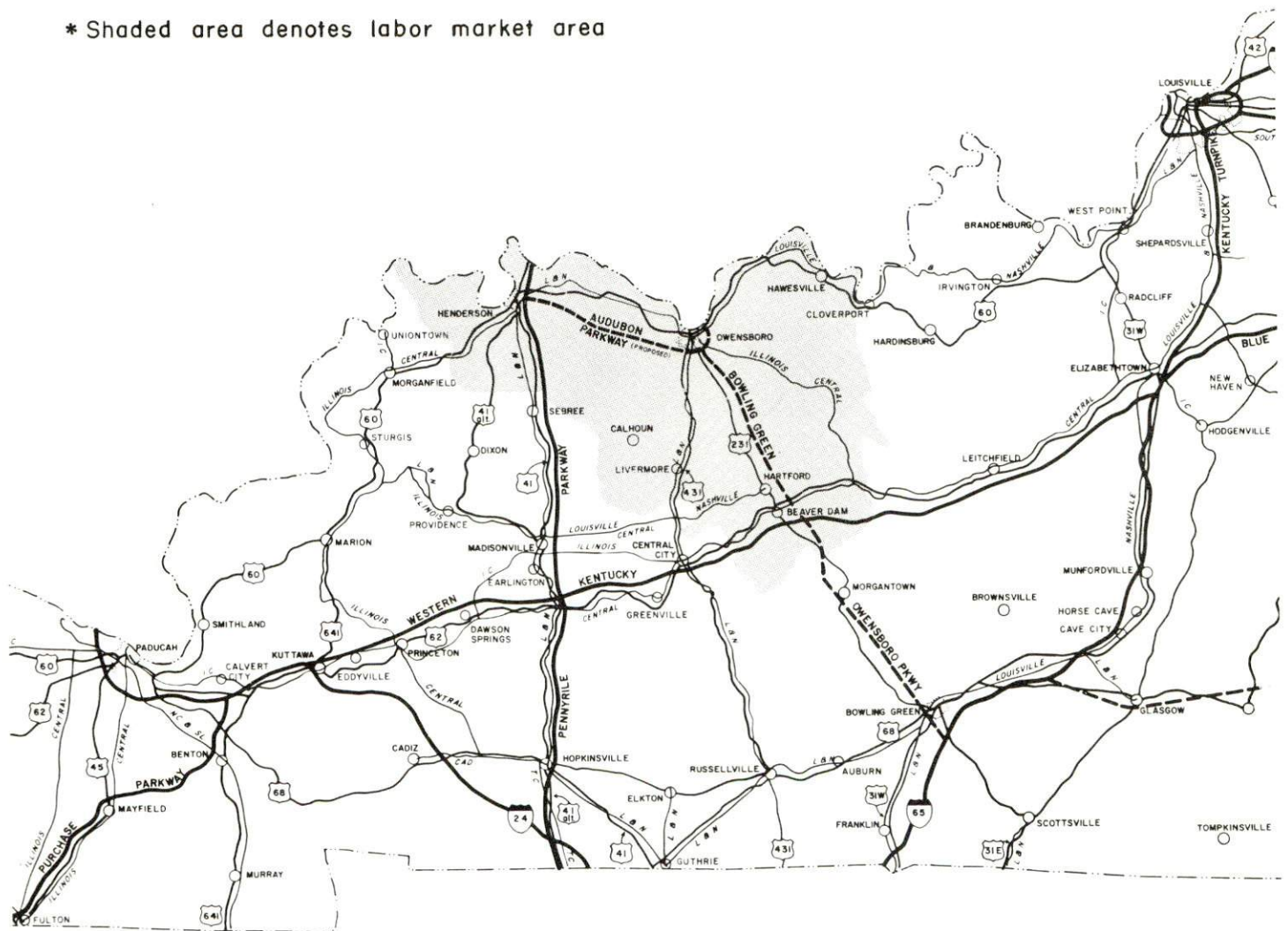


Aerial View of Owensboro, Kentucky



# OWENSBORO LABOR MARKET AREA

\* Shaded area denotes labor market area





## OWENSBORO, KENTUCKY - A RESOURCE PROFILE

### Location

Owensboro, the county seat of Daviess County, is located on the southern bank of the Ohio River in Kentucky's Western Coal Field Region. Owensboro is one of the few cities on the Ohio River during the 1937 flood which was not also "in" the river. This was due to the high, yellow river banks from which Owensboro was given its first name.

Geographically, Owensboro is 30 miles southeast of Evansville, Indiana, 116 miles southwest of Louisville, Kentucky, and 127 miles northwest of Nashville, Tennessee. Population of Owensboro was estimated at 52,300 in January 1969, with population of Daviess County estimated at 76,400.

### The Economic Framework

Total employment in Daviess County averaged 31,249 in 1968, with manufacturing providing 10,000 of these jobs. During the first nine years of the decade manufacturing employment increased by almost 1,350 jobs or 15.5 percent. Major industrial products are whisky, vacuum tubes, steel, and electronic components.

Per capita income in the county in 1968 was \$3,276 or \$650 above the state average and ranked seventh among the state's 120 counties.

Owensboro is the hub of a labor market area that includes Daviess and four other counties. Area employment totals almost 54,100 including 11,800 in trade and services. Manufacturing furnishes slightly more than 15,600 jobs which is a gain of more than 3,800 jobs, or 32.9 percent over the last nine years.

### Resources For Growth

1. There is a current estimated labor supply of 3,200 men and 3,200 women available for industrial jobs in the labor market area. Commuting to Owensboro jobs from surrounding counties is commonplace today. In addition, 8,000 young men and 7,400 young women will become 18 years of age by 1975 and potentially available for work.

2. The local transportation capability is excellent. Owensboro will be served by two state parkways, which will interconnect with the Interstate Highway System. Commercial air service is provided by four flights daily.

3. Energy - both gas and electricity - is available in large quantity. The local water supply is excellent.

4. Industrial sites - Owensboro has four industrial sites with all utilities available.

5. Education is an important growth asset for Owensboro. The city and county school systems are rated among the most outstanding in Kentucky.

Four senior colleges are within 70 miles of Owensboro, with Western Kentucky University only 70 miles away and the University of Evansville within 30 miles. Owensboro is the home of Brescia and Kentucky Wesleyan Colleges.

Kentucky Wesleyan, under the auspices of the Methodist Church, was formally opened in Owensboro on October 9, 1951. The citizens of the Owensboro area raised \$1,000,000 to move the college from Winchester, Kentucky, where it had been located since 1890. Wesleyan, also a member of the Southern Association of Colleges and Schools, confers Bachelor of Arts and Bachelor of Science degrees and offers pre-professional curricula. The college staff includes 48 full-time and 22 part-time instructors. The 1968-69 enrollment was 1,183 students.

Brescia, under the direction of the Ursuline Nuns of Mount St. Joseph, moved to Owensboro in 1950. In 1951, through affiliation with the Catholic University of America, upper division courses leading to the baccalaureate degree were added. It was admitted to membership in the Southern Association of Colleges and Schools as a senior college the same year. Brescia, with an enrollment of 1,115 students and 55 full-time and 32 part-time instructors, now prepares professional teachers and offers liberal arts and professional curricula.

#### Community Programs For Improvement

Owensboro and Daviess County have undertaken many and varied improvement programs. Approximately 200 units of public housing will soon be completed, and ground has been broken for the city's sixth low-rent housing project, designed for the elderly. The city is currently working on an airport development plan. A new water tower and mini-parks are now being developed throughout the city.

As a former All American city, Owensboro continues to look forward and has continued its energetic effort in promoting community growth and improvement.



## Recreation, Entertainment, and Livability

The Owensboro Recreational Commission maintains municipal parks, golf courses and the sportscenter complex which includes swimming, ice rink, auditorium and arena. The seven-man board is also responsible for the operation of a year-round recreational program.

Brescia and Kentucky Wesleyan Colleges both operate student theaters. Brescia's "le petit theater" during the summer months shifts its emphasis to the production of plays especially written for children. Kentucky Wesleyan's "The Little Theater" opened in 1967 and is well-equipped and versatile. The Little Theater, seating 300 people, adapts to a variety of staging techniques.

The Owensboro Art Guild was founded as a means of promoting the visual arts among interested patrons and artists as well as the general public. The Guild sponsors an annual juried show which attracts more than 200 paintings, sculpture, and other works of art.

The Owensboro Civic Orchestra, a 70-member symphony orchestra, has completed two seasons. The orchestra gives concerts during the year with guest soloists appearing with the orchestra.

Owensboro's Sportscenter is the home court of Kentucky Wesleyan College. Kentucky Wesleyan has been the NCAA small college basketball champion for three of the last four years.

Within the area there are numerous recreational facilities available. Audubon State Park, just north of Henderson, Kentucky, has the famous John James Audubon Memorial Museum, housekeeping cabins, picnic facilities, beach, bathhouse, and boating facilities.

Kentucky Lake and Lake Barkley are within easy driving distance of Owensboro. A variety of recreational facilities are available and lodging facilities can be obtained.

Other area facilities include Rough River Dam State Park, Nolin River Reservoir, Mammoth Cave National Park, and the Pennyrile Forest State Park.

Thoroughbred racing is held at James C. Ellis Park and Race Track, located between Henderson, Kentucky, and Evansville, Indiana. Harness racing can also be found at Audubon Raceway, Henderson, Kentucky.

During the year additional thoroughbred and harness racing can be found at Louisville, where on the first Saturday in May the world famous Kentucky Derby is held at Churchill Downs.



# THE LABOR MARKET

## POPULATION TRENDS <sup>1/</sup>

Area	1969 (Est.)	1960	1950	Percent Change	
				1960-69	1950-60
Labor Market Area	147,400	136,517	124,826	+ 8.0	+ 9.4
Daviess County	76,400	70,588	57,241	+ 8.2	+23.3
Owensboro	52,300	42,471	33,651	+23.1	+26.2

## GENERAL EMPLOYMENT CHARACTERISTICS <sup>2/</sup>

Major Employment Group	1968	1968
	Daviess County	Labor Market Area
TOTAL	31,249	54,095
Agricultural	1,914	5,616
Nonagricultural	29,335	48,479
Manufacturing	10,000	15,634
Trade and Services	7,921	11,779
Government	2,432	4,778
Other	8,982	16,288

## MANUFACTURING EMPLOYMENT TRENDS BY INDUSTRY SEPTEMBER 1959 AND 1968 <sup>3/</sup>

Industry	Daviess County			Labor Market Area		
	1968	1959	% Change	1968	1959	% Change
TOTAL	10,000	8,661	+15.5	15,634	11,767	+ 32.9
Food & Kindred						
Products	1,521	1,704	-10.7	1,765	1,887	- 6.5
Tobacco	754	528	+42.8	754	528	+ 42.8
Apparel, Textiles,						
Leather	5	4	+25.0	1,139	731	+ 55.8
Lumber & Furniture	721	580	+24.3	1,949	1,665	+ 17.0
Printing, Publishing,						
Paper	202	131	+54.2	672	192	+250.0
Chemicals, Petroleum,						
Coal, Rubber	251	134	+87.3	1,108	725	+ 52.8
Stone, Clay & Glass	330	297	+11.1	588	336	+ 75.0
Primary Metals	706	617	+14.4	1,541	748	+106.0
Machinery & Metal						
Products	5,502	4,655	+18.2	6,045	4,875	+ 24.0
Other	8	11	-27.3	73	80	- 8.7

MAJOR OWENSBORO MANUFACTURING FIRMS WITH PRODUCTS  
AND EMPLOYMENT <sup>4/</sup>

Firm	Product	Employment		
		Total	Male	Female
The American Tobacco Co.	Cigars	763	174	589
V. E. Anderson Mfg. Co.	Aluminum storm windows, doors, wood windows, insulating glass	225	200	25
Brady Tank, Inc.	Water tanks	51	50	1
Can-Tex Industries	Vitrified clay sewer pipe	94	91	3
Colonial Baking Co.	Bread	78	76	2
Daviess County Planing Mill	Lumber, millwork	25	23	2
Dewey & Almy Chemical Division	Battery separators, latex cellulosic fibers	204	195	9
Faith Tool & Die Co., Inc.	Tools, dies, gauges	44	39	5
Field Packing Co., Inc.	Meat packing	280	245	35
The Fleischmann Distilling Corp.	Whisky, feed, cooperage	154	150	4
General Electric Co.	Radio, television tubes, components, industrial controls	4,700	1,100	3,600
Glenmore Distilleries Co.	Whisky	253	197	56
Green River Steel Corp.	Bars, billets, blooms, slabs, ingots	733	710	23
Hodge Tobacco Co.	Tobacco processing	165*	143	22
Ideal Pure Milk Co.	Fluid milk, ice cream	99	88	11
W.S. Johnson Packing Co., Inc.	Meat processing	42	32	10
Katterjohn Concrete Co., Inc.	Concrete block, septic tanks, water troughs	24	23	1
Kentucky Concrete Pipe Co., Inc.	Concrete pipe	20	20	0
Kentucky Electronics, Inc.	Wire drawing, precision metal parts	315	90	225
Lashbrook Lumber Co.	Lumber	20	20	0
Lloyds Mechanical Erection Co.	Conveyors, cranes	22	20	2
Medley Distilling Co.	Whisky, animal feed supplement	170	112	58
Modern Welding Co., Inc.	Storage tanks, pressure vessels, fabricated structural steel	121	116	5



Firm	Product	Employment		
		Total	Male	Female
Murphy Grain & Milling Co.	Corn meal, hominy feed	32	30	2
Murphy-Miller, Inc.	Upholstered furniture, office desks, chairs	500	450	50
Ohio Valley Dr. Pepper Bottling Co., Inc.	Soft drinks	23	20	3
Ohio Valley Forgings, Inc.	Steel drop forgings	51	49	2
Opportunity Center Workshop	Styrofoam products	34	15	19
Owensboro Brick & Tile Co.	Face brick, structural tile	85	80	5
Owensboro Canning Co., Inc.	Canned vegetables	40*	15	25
Owensboro Coca-Cola Bottling Co., Inc.	Soft drinks	42	37	5
Owensboro Grain Co.	Soybean oil, meal	50	50	0
Owensboro Ice Cream & Dairy Products	Fluid milk, ice cream	79	75	4
Owensboro Publishing Co.	Newspaper	109	86	23
Owensboro Tobacco Co.	Tobacco redrying	350*	100	250
Premium Allied Tool Co.	Cathode ray tube parts, semi-conductor parts, reed switch parts	25	20	5
Southern Tank & Mfg. Co.	Steel truck, storage tanks, hoppers	35	33	2
Westinghouse Electric Corp.	Incandescent lamps	103	36	67

\*Seasonal employment.

WAGE RATES FOR SELECTED OCCUPATIONS  
OWENSBORO, KENTUCKY 5/

Classification	Rates Per Hour		
	Starting	Maximum	Prevailing
<u>Production Employees</u>			
Assembler	\$1. 60	\$2. 10	\$1. 70
Drill Press Operator	1. 73	2. 20	1. 75
Grinder, Machine	1. 73	2. 10	1. 75
Inspector	1. 73	2. 10	1. 75
Lathe Operator	2. 00	2. 25	2. 00
Machinist, Set Up	2. 00	3. 00	2. 10
Polisher and Buffer	1. 73	2. 10	1. 75
Production Laborer	1. 73	2. 30	2. 00
Punch Press Operator	1. 73	2. 20	2. 00
Sprayer or Painter	1. 73	2. 30	2. 00
Welder, Arc or Acetylene	2. 00	3. 10	2. 25
Welder, Resistance or Spot	1. 73	2. 10	2. 00
<u>Service Employees</u>			
Carpenter	\$2. 00	\$2. 50	\$2. 00
Crane Operator	2. 00	2. 50	2. 00
Electrician	2. 50	3. 10	2. 50
Janitor	1. 60	2. 00	1. 75
Laborer	1. 60	2. 00	1. 75
Machinist	2. 50	3. 50	2. 50
Mechanic, Maintenance	2. 00	3. 00	2. 00
Pattern Maker	2. 00	2. 75	2. 00
Shipping Clerk	1. 60	1. 95	1. 73
Truck Driver	1. 60	2. 00	1. 73
Tool, Die or Gauge Maker	2. 50	3. 50	2. 50
Welder, Acetylene, Carbon, and Arc	2. 50	3. 00	2. 50
<u>Office Employees</u>			
Bookkeeper or Accounting Clerk	\$1. 75	\$2. 10	\$2. 00
Chief Clerk	1. 75	2. 20	2. 00
Draftsman	1. 70	2. 25	2. 00
File Clerk	1. 60	1. 85	1. 70
Key Punch Operator	1. 60	1. 85	1. 70
Receptionist	1. 60	1. 85	1. 70
Secretary	75. 00 wk.	110. 00 wk.	75. 00 wk.
Stenographer	75. 00 wk.	120. 00 wk.	85. 00 wk.
Tabulating Machine Operator	1. 60	2. 00	1. 70
Telephone Operator	1. 60	2. 00	1. 70
Typist	1. 60	2. 00	1. 70



## LABOR ORGANIZATIONS

<u>Union</u>	<u>Representing Workers at:</u>
Allied Industrial Workers	Westinghouse Electric Corp.
Carpenters	General Electric Company
Distillery and Wine Workers	V. E. Anderson Mfg. Co.
	Glenmore and Fleischman Distilleries
Boilermakers	Dewey & Almy Chemical Div., Brady Tank, Inc.
Steel Workers	Green River Steel Corp.
	Faith Tool & Die Co., Inc.
	Kentucky Electronics, Inc.
Tobacco Workers	American Tobacco Co.
Upholstery Workers	Murphy-Miller, Inc.

### CURRENT AND FUTURE LABOR SUPPLY - OWENSBORO LABOR MARKET AREA 6/

County	1969			Future Labor Supply by 1975 (Becoming 18 Years of Age)		
	Current Labor Supply Total	Male	Female	Total	Male	Female
Labor Market Area	6,407	3,231	3,176	15,289	7,992	7,407
Daviess	2,220	1,104	1,116	8,504	4,391	4,113
Hancock	541	263	278	539	277	262
Henderson	803	448	355	3,712	1,934	1,778
McLean	788	274	514	876	448	428
Ohio	2,055	1,142	913	1,654	832	826

### TOTAL PERSONAL INCOME 7/

Area	1968	1959	% Change
Daviess County	\$ 249,320,000	\$ 142,132,000	+76.1
Labor Market Area	402,314,000	220,308,000	+82.6
Kentucky	8,360,000,000	4,655,000,000	+79.6

### PER CAPITA PERSONAL INCOME 8/

Area	1968	1959	% Change
Daviess County	\$ 3,276	\$ 1,973	+66.0
Labor Market Area	3,276 to 1,427	1,973 to 894	+66.0 to +59.6
Kentucky	2,614	1,552	+68.4

## EDUCATION

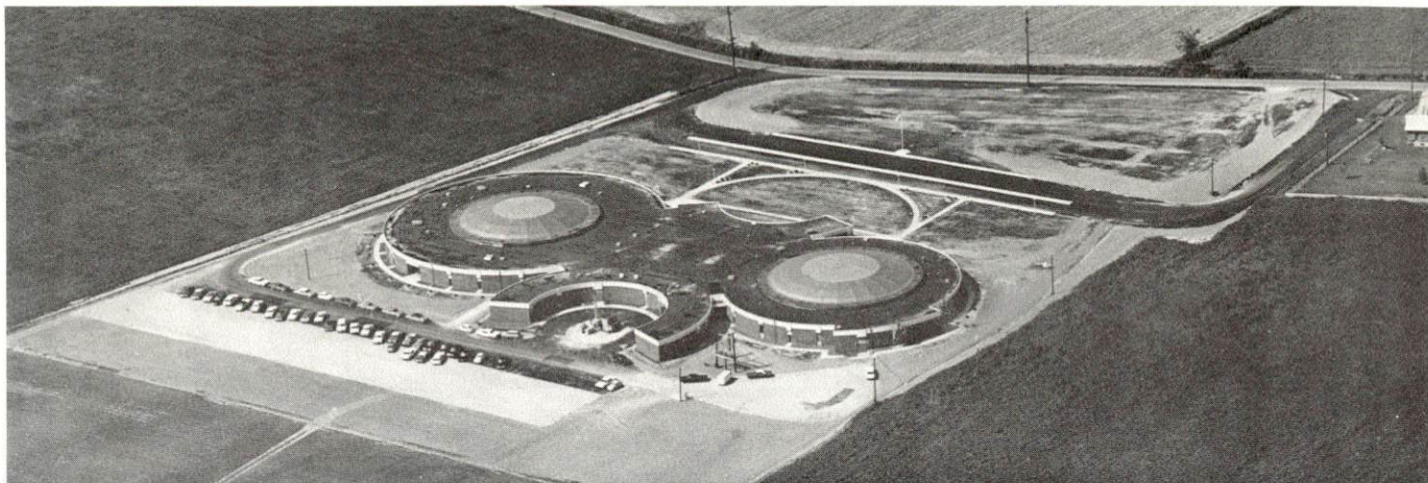
### Public Schools

	<u>Owensboro Independent</u>	<u>Daviess County</u>
Total Enrollment	7,449	7,357
Elementary	4,038	4,099
Junior High	1,870	1,744
High School	1,541	1,514
Student-Teacher Ratio	23-1	27-1
Elementary	24-1	28-1
Junior High	22-1	25-1
High School	22-1	25-1
State Rating of High School	Comprehensive	Comprehensive
Other Accreditations	Southern Association of Colleges and Schools	Southern Asso- ciation of Colleges and Schools
Percent High School Graduates to College	59.1	50.5
Current Expenditures Per Pupil	\$435.52	\$415.79
Bonded Indebtedness	\$4,161,000	\$2,972,000

### Parochial, Private and Special Schools

	<u>Parochial</u>
Total Enrollment	6,084
Elementary	4,458
High School	1,626
Student-Teacher Ratio	25-1
Elementary	30-1
High School	17-1





Apollo Junior High School



Daviess County High School



Owensboro Senior High School

### Vocational Schools

	<u>Nearest Area School</u>
Location	Owensboro
Curriculum	Practical nursing
	Distributive education
	Electronics (Communication)
	Electronics (Industrial)
	ETV Technician
	Auto body repair
	Auto mechanics
	Cosmetology
	Drafting
	Machine cabinet making
	Machine shop
	Office machine repair
	Printing
	Welding

### Colleges and Universities

<u>Name</u>	<u>Area - Within 70 miles</u>		<u>Highest Degree Conferred</u>
	<u>Location</u>	<u>Enrollment</u>	
Brescia College	Owensboro	1, 115	Baccalaureate
Kentucky Wesleyan College	Owensboro	1, 183	Baccalaureate
University of Evansville	Evansville, Indiana	5, 406	Masters
Western Kentucky University	Bowling Green	10, 570	Masters
Henderson Community College	Henderson	668	Associate





Science Building - Brescia College



## TRANSPORTATION

### Rail

Lines serving - Louisville & Nashville Railroad, Illinois Central Railroad

Services - Freight, switching, piggyback, REA Express pickup and delivery

### RAILWAY TRANSIT TIME FROM OWENSBORO, KENTUCKY, TO: 9/

No. of Days		No. of Days	
City	CL	City	CL
Atlanta, Ga.	3	Los Angeles, Calif.	9
Birmingham, Ala.	3	Louisville, Ky.	1
Chicago, Ill.	3	Nashville, Tenn.	2
Cincinnati, Ohio	2	New Orleans, La.	4
Cleveland, Ohio	4	New York, N. Y.	6
Detroit, Mich.	5	Pittsburgh, Pa.	5
Knoxville, Tenn.	3	St. Louis, Mo.	1

### Truck Service

<u>Company</u>	<u>Home Office</u>
A & H Truck Line, Inc.*	Terre Haute, Indiana
Brada Miller Freight System*	Kokomo, Indiana
D-C International, Inc.	Denver, Colorado
Interstate Motor Freight System	Grand Rapids, Michigan
McLean Trucking Company	Winston-Salem, North Carolina
Meade Transport, Inc.*	Owensboro, Kentucky
Motor Freight Corporation*	Terre Haute, Indiana
Roadway Express, Inc.	Akron, Ohio
Transport Motor Express, Inc.*	Fort Wayne, Indiana

\*Maintain terminal facilities in Owensboro.

HIGHWAY MILES AND TRUCK TRANSIT TIME IN DAYS FROM  
OWENSBORO, KENTUCKY, TO SELECTED MARKET CENTERS <sup>10/</sup>

City	Delivery		City	Delivery	
	Highway Miles	Time TL		Highway Miles	Time TL
Atlanta, Ga.	384	2	Los Angeles, Calif.	2,053	4
Birmingham, Ala.	345	2	Louisville, Ky.	116	1
Chicago, Ill.	323	1	Nashville, Tenn.	127	1
Cincinnati, Ohio	266	1	New Orleans, La.	750	2
Cleveland, Ohio	510	2	New York, N. Y.	874	3
Detroit, Mich.	448	2	Pittsburgh, Pa.	576	2
Knoxville, Tenn.	314	2	St. Louis, Mo.	205	1

Air

Local

Owensboro-Daviess County Airport  
 Location: 3 1/2 miles west-southwest of Owensboro  
 Runways: 2 paved  
 Length: 6,500 by 150 ft; 3,700 by 100 ft.  
 Traffic Control: Control tower  
 Lighting: Beacon, runways, wind tee, obstruction and taxi  
 Services: Ozark Airlines; 80, 91 and 100 octane; jet A fuel;  
 storage; major A & E repairs; general flying  
 service; taxi

Bus

Southern Greyhound, Fuqua, Evansville and Ohio Valley  
 Bus Lines, Owensboro City Bus Lines, Inc.

Taxi

24-hour radio dispatched service by Yellow Cab Company,  
 Veteran Cab Company

Rental Services

Car, trailer and truck



## POWER AND FUEL

### Electricity

Company serving Owensboro - Owensboro Municipal Utilities

Source of power - Owensboro Municipal Utilities

Total generating capacity - 201,000 KW

Industrial rates negotiated by - Owensboro Municipal Utilities,  
Owensboro, Kentucky

Company serving Daviess County - Kentucky Utilities Company and  
Green River RECC

Source of power - Kentucky Utilities and Big Rivers RECC

Total generating capacity - Kentucky Utilities - 740,000 KW,

Big Rivers RECC - 240,000 KW

Industrial rates negotiated by - Kentucky Utilities Company,  
Lexington, Kentucky; Big Rivers RECC, Henderson, Kentucky

### Natural Gas

Company serving - Western Kentucky Gas Company

Source of supply - Texas Gas Transmission Corporation

Size of transmission lines - 24-inch

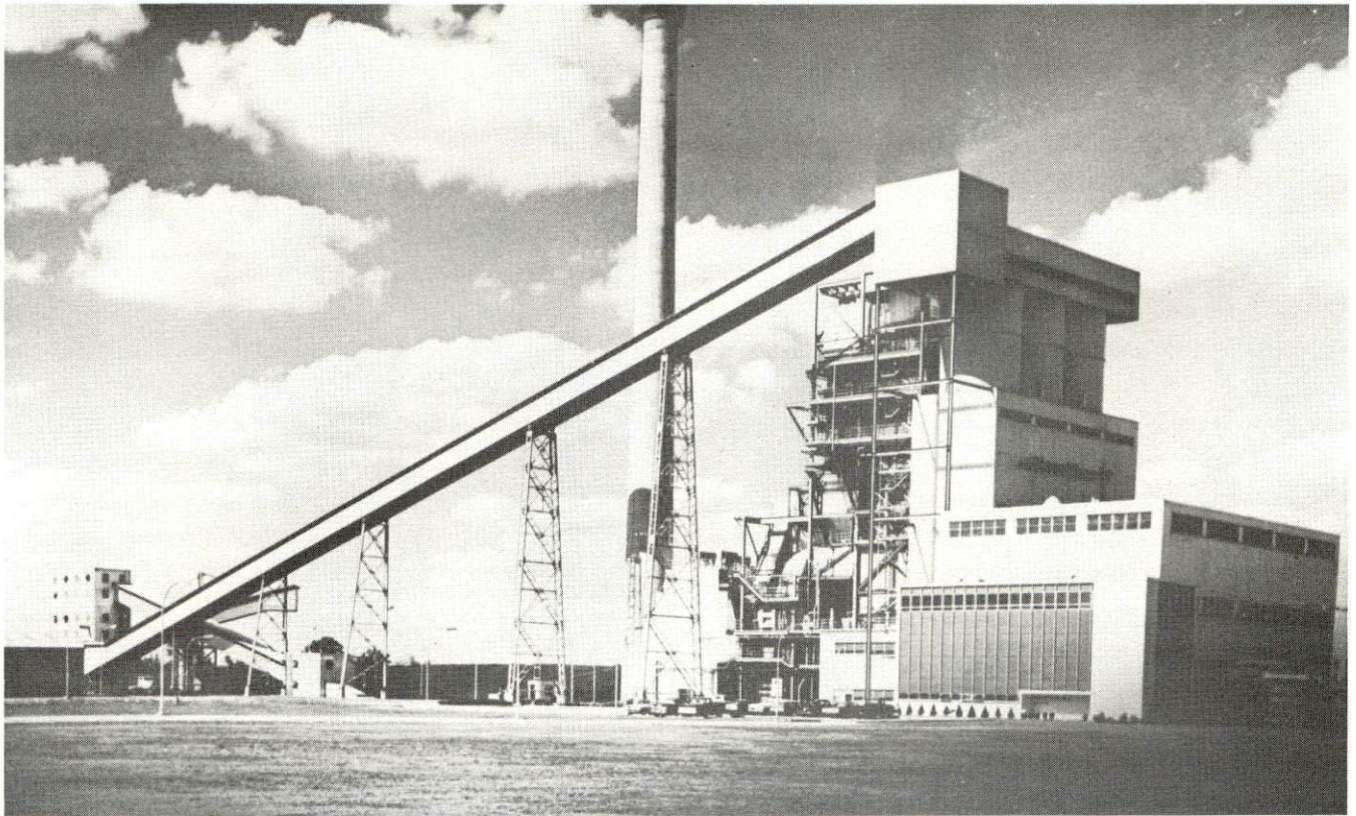
Distribution lines - 2 to 10 inches

BTU content - 1,000; Specific gravity - .60

Distribution pressure - 4 ounces to 35 psi

Industrial rates furnished by - Western Kentucky Gas Company,  
Owensboro, Kentucky





Owensboro Municipal Utilities Electric Generating Station



Green River RECC, Owensboro





Western Kentucky Gas Company Building - General Office



Texas Gas Transmission Corporation, Owensboro



## WATER AND SEWERAGE

### Water

Company serving - Owensboro Municipal Utilities  
Source - 23 wells  
Treatment plant capacity - 12.5 million gpd  
Average daily consumption - 7.5 million gallons  
Peak daily consumption - 9.8 million gallons  
Type treatment - flocculation, sedimentation, filtration, chlorination  
Storage capacity - 6,000,000 gallons  
Average pressure - 60 psi  
Average temperature - 58° F  
Size mains - 2 to 24 inches

### MONTHLY WATER RATES FOR WHOLESALE AND INDUSTRIAL CONSUMERS

	<u>Cu. Ft. delivered in any one month</u>	<u>Per 100 Cu. Ft.</u>
First	1,500	\$ .30
Next	3,000	.24
Next	6,000	.20
Next	20,000	.16
Next	219,500	.12
Next	250,000	.11
All over	500,000	.10

### Minimum Charge for Metered Service

5/8 or 3/4-inch meter	\$ 1.00 per month
1-inch meter	2.75 per month
1 1/4-inch meter	4.50 per month
1 1/2-inch meter	6.00 per month
2-inch meter	10.00 per month
3-inch meter	18.00 per month
4-inch meter	27.00 per month
6-inch meter	50.00 per month
8-inch meter	100.00 per month

### Private Fire Protection Charges

2-inch service connection	\$ 2.50 per month
4-inch service connection	5.00 per month
6-inch service connection	7.50 per month
8-inch service connection	10.00 per month

50 percent added to all bills for water services to customers outside the city limits of Owensboro.

Surface water sources - Ohio River

Average discharge - 130,000 cfs

Expected ground water yield - 5 gpm

Yield along main streams - 1,000 gpm along Ohio River - alluvium

### Sewerage

Company serving - Owensboro Sewer Commission

Design capacity - 11,000,000 gpd

Average daily flow - 11,000,000 gallons

Treatment - primary

Type treatment - sedimentation, disinfection, and separate digestion

Treated effluent discharged into - Ohio River

Size of mains - 6 to 96 inches

Rates - 100 percent of the water bill

## LOCAL GOVERNMENT

### City

Structure - city manager and mayor - 4-year terms; 4 commissioners - 2-year terms  
Budget 1968-70 - General Fund \$4,501,000  
Fees and licenses - Vehicle license \$2.50 - Business license \$15.00 (minimum) - Occupational license tax, one percent on gross wages of individual and on net profits of businesses

### County

Structure - County judge - 4-year term; 3 magistrates - 4-year terms  
Budget 1969-70 - General Fund \$1,500,000

### Assessed Value of Property - 1969

<u>Classes of Property*</u>	<u>Owensboro</u>	<u>Daviess County</u>
Real Estate	\$230,804,652	\$389,107,685
Tangibles	40,341,622	66,203,760
Public Service	19,042,124	49,125,658

### Local General Property Tax Rates Per \$100 of Assessed Valuation - 1969

<u>Taxing Unit**</u>	<u>Owensboro</u>	<u>Daviess County</u>
State	\$ .015	\$ .015
County	.164	.164
School	.865	.608
City	.448	
Total	\$1.492	\$ .787

\*Property assessed at 100 percent of fair value.

\*\*Manufacturing machinery, raw materials inventories and goods in process inventories are not subject to local tax. State rate is only \$0.15 per \$100.





Owensboro Public Library



Daviess County Courthouse



## Planning and Zoning

Agency - Owensboro Planning and Zoning Commission

Plans completed - Zoning ordinance, comprehensive plan, subdivision regulations

Plans in process - Revision of zoning ordinance, updating comprehensive plan

Codes adopted - All major codes and ordinances

Other programs - Public housing, Urban Renewal, Airport Development Plan

## Safety

### Police

	<u>Daviess County</u>	<u>Owensboro</u>
Total staff	17	96
Radio-patrol cars	17	26
Other equipment	Standard	Standard

### Fire

American Insurance  
Association Fire Rating  
Full-time staff  
Volunteers  
Equipment:  
1,000 gpm pumpers  
750 gpm pumpers  
ladder truck  
utility truck

4  
93  
None  
4  
3  
3  
1

## Sanitation

	<u>Daviess County</u>	<u>Owensboro</u>
Type service	private contract	municipal
Cost	approximately \$2.50 per month	free
Collection frequency	by contract	daily
Trash pickup	by contract	daily
Disposal method	sanitary land fill	sanitary land fill

## HEALTH

### Hospitals

	<u>Number</u>	<u>Beds</u>
General hospitals	2	583
General hospital facilities - pharmacy, clinical laboratories, operating rooms, recovery rooms, emergency room, psychiatry license, X-ray, blood bank		
Medical staff - 75 doctors, 54 registered nurses, 28 graduate licensed practical nurses		

### Nursing Homes

	<u>Number</u>	<u>Beds</u>
Extended care homes	3	197
Personal care homes	8	335

### Public Health

Facility - Daviess County Health Department

Staff - Health director, 5 clerk typists, 9 nurses, 4 sanitarians and 4 clinicians

Budget 1969-70 - \$180,000





Owensboro-Daviess County Hospital



Our Lady of Mercy Hospital

## OTHER LOCAL FACILITIES

### Communications

Telephone - South Central Bell Telephone Company  
Services - all standard services

Telegraph - Western Union  
Services - office and telephone

Postal - Class -1 U. S. Post Office  
Mail received - 11 times daily  
Mail dispatched - 9 times daily

Newspaper dailies - Messenger and Inquirer  
Circulation - 27,400

Radio - WVJS-AM; WSTO-FM; WOMI-AM-FM  
Hours of operation AM - 6 a. m. to 12 p. m.  
Hours of operation FM - 6 a. m. to 12 p. m.

Television - no local station  
Reception from - Henderson, Kentucky, and Evansville, Indiana  
Kentucky Educational Television - Channel 35, Madisonville transmitter

### Library Services

Public libraries - Owensboro Public Library  
Size collection - 60,000 volumes  
Circulation, 1968-69 - 196,328  
Services - records, framed paintings, microfilm

Private libraries - Kentucky Wesleyan and Brescia College

### Religious Institutions

Number of churches - 70  
Denominations - all major denominations



## Financial Institutions

<u>Bank</u>	<u>Statement as of June 30, 1969</u>	
	<u>Assets</u>	<u>Deposits</u>
The Owensboro National Bank	\$67,159,283	\$61,054,820
Central Bank & Trust Co.	38,921,674	34,921,674
Citizens State Bank	33,801,107	29,634,941
<u>Savings and Loan Associations</u>	<u>Assets</u>	<u>Shared Accounts</u>
Owensboro Federal	\$42,042,750	\$37,627,522
Lincoln Federal (12-31-68)	6,121,525	5,118,078
First Home Federal	23,257,803	20,567,271

## Hotels and Motels

Number - 13  
Rooms or units - 663

## Clubs and Organizations

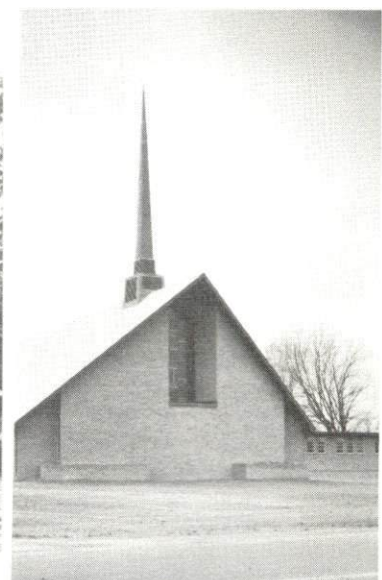
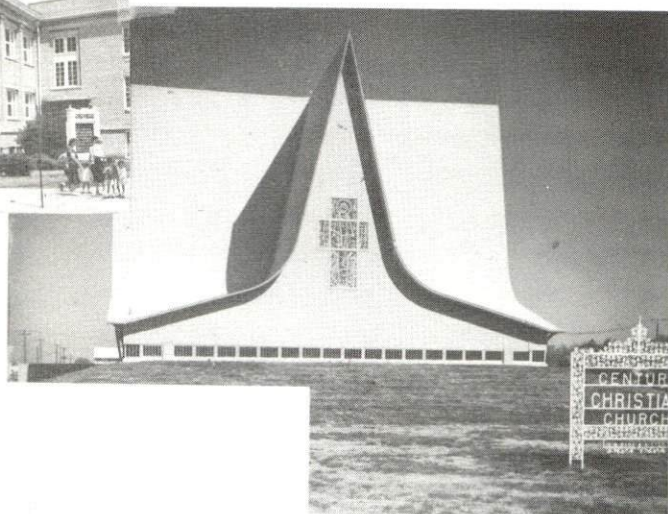
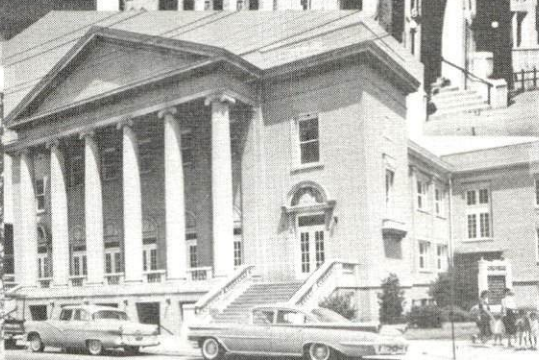
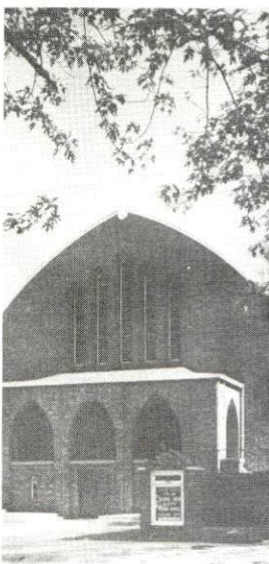
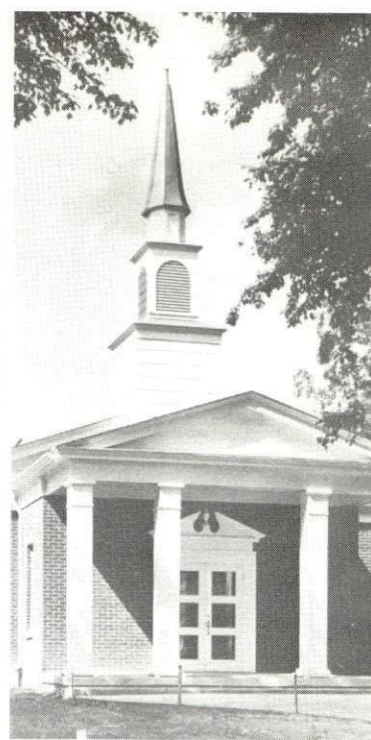
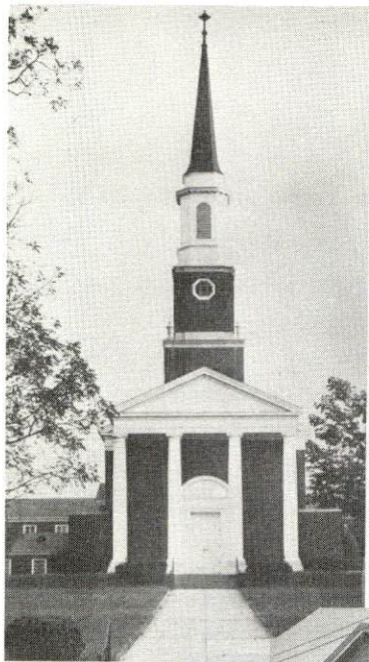
Business and Civic - Chamber of Commerce, Jaycees, Kiwanis, Lions, Rotary, Optimist, Civitan, Medical Society, Dental Society, Ministerial Association, Salvation Army, Red Cross, Welcome Wagon

Fraternal - American Legion, Eagles, IOOF, Masonic Lodge, Moose Lodge, VFW, YMCA, Elks, Spastic Guild

Women's - YWCA, Woman's Club, Business and Professional Women's Club, DAR, Homemakers, Garden Club, Rebekah, Cotillion, Jaycettes, Civitana, Moose Auxiliary, American Legion Auxiliary, VFW Auxiliary, American Business Women's Association, American Association of University Women, League of Women Voters, Junior Service League

Youth - Boy Scouts, Girl Scouts, Cub Scouts, Brownies, FFA, FHA, 4-H, Beta Club, Junior Achievement



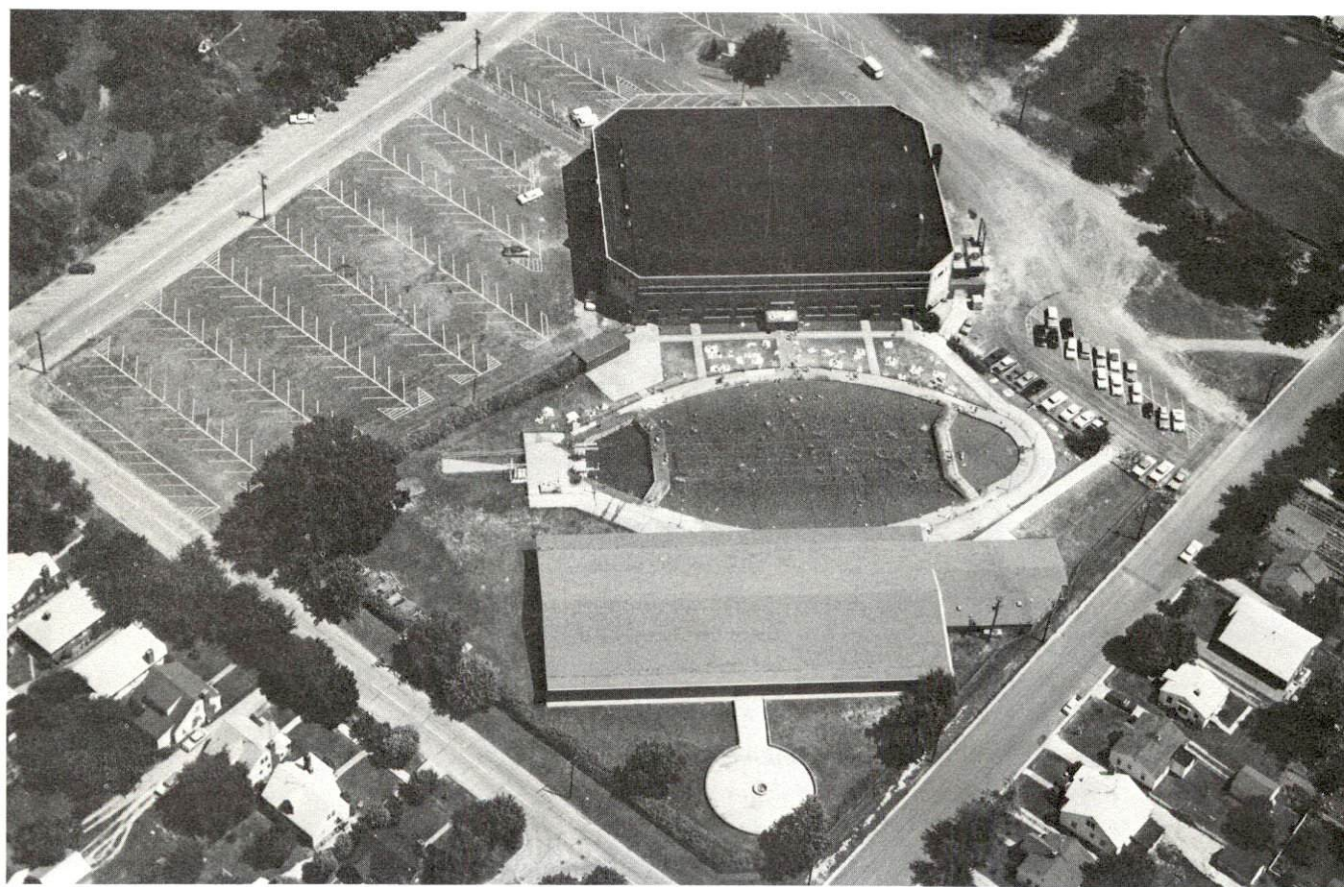


Some of Owensboro's 70 churches





New Family-Y



Owensboro Sportscenter

## RECREATION

### Local

#### Public Recreation Facilities

Supervised program - Owensboro Recreational Commission

Parks - 9

Playgrounds - 16

Swimming pools - 3

Golf courses - 4

Tennis courts - 4

Baseball diamonds - 4

Football fields - 3

#### Private Recreation Facilities

Country clubs - 2

Golf courses - 2

Swimming pools - 2

Movie theaters - 4

Bowling lanes - 2

Other - 1 ice rink, YMCA

#### Tourist Attractions

Owensboro Unlimited Hydroplane Regatta

Uncle Tom's Daviess County Cabin

Glenmore Distillery

#### Cultural Events

Community Concert Association

Owensboro Festival of Arts

Owensboro Symphony Orchestra

The Little Theater

Act IV Theater

### Area (Within 50 miles)

Windy Hollow Recreational Area

John James Audubon State Park

Lake Malone State Park

Rough River Dam State Park

Miller Lakes



# AGRICULTURE - NATURAL RESOURCES - CLIMATE 11/

## Agriculture

	<u>Daviess County</u>	<u>Labor Market Area</u>
Total land area	295,680 acres	1,238,000 acres
Percent of area in farm land	82.9 percent	71.6 percent
Number of farms	1,952	6,229
Average size of farms	125.5 acres	142.4 acres
1964 value of all farm products	\$15,482,495	\$38,075,139
Value per farm	7,932	6,112
Total crop sales	9,449,124	22,764,238
Total livestock & livestock products	6,029,371	14,904,300
1967 agricultural production included:		
Burley tobacco	6,482,000 lbs.	12,322,000 lbs.
Corn	4,232,000 bu.	13,275,000 bu.
Cattle and calves	49,400 head	131,900 head
Hogs and pigs	36,600 head	137,700 head
Milk production (1966)	22,940,000 lbs.	37,020,000 lbs.

## Natural Resources

Principal mineral resources	Coal, petroleum
Other mineral resources	Sand and gravel and miscellaneous clay
Acres of commercial forest land	70,000
Most abundant tree species	Red oaks, white oaks, hickories, sweet gum, soft and hard maples, yellow poplar, ash

## Climate

Temperature (30-year record)	
Annual mean	57.2° F
Average annual 1960	56.1° F
Record highest June, 1944	107° F
Record lowest February, 1951	- 21° F
Mean annual degree-days	4,288 days
Precipitation (30-year record)	
Mean annual total	44.27 inches
Mean annual snow and sleet	10.50 inches
Total precipitation 1960	33.44 inches
Mean No. Days precipitation	.01 inches or more - 76
Average No. days thunderstorms	50
Prevailing winds - southwest	30.

## HISTORY

Daviess County, the fifty-eighth county formed in Kentucky, dates from 1815. Its territory was taken from Ohio County. Later it gave lands to help form Hancock (1829) and McLean Counties (1854). It contains 466 square miles, is bounded on the north by the Ohio River, and the Green River flows along approximately three-fourths of its western side before entering Henderson County, from which it empties into the Ohio. Panther Creek bisects the county and flows in a westerly direction of its confluence with Green River. The topography of the county is level to hilly, with some forested areas inland from the Ohio.

The first settlement in Daviess County was made at Owensboro in 1798 by William Smithers. He was impressed by the numerous cane breaks along the Ohio and the plentiful game that lived in them.

Owensboro, the county seat, is 765 feet above sea level. It was first known as Yellow Bank, then when Daviess County was formed its name was changed to Rossborough, to honor David Ross, one of the largest property owners in town. The Legislature granted the town a charter in 1866 and renamed it Owensboro for Colonel Abraham Owen, who lost his life at Tippecanoe while serving under General Harrison.

Industry came to Daviess County soon after its establishment. The distillery which began operations in 1820 was an improvement on the first attempt made by Robert McFarland a few years before. This second plant, established by Robert Triplett, became one of the fastest growing concerns in the state. By 1887, there were 75 distilleries that produced 356 barrels of whisky each day. Today, the industry continues as a vital part of the county's economy.

Daviess County was named for Colonel Joseph Hamilton Daveiss (for some oversight the county's name is not spelled as Colonel Daveiss spelled his name), a native of Bedford County, Virginia, who came to Kentucky at the age of five with his parents and settled near Danville. He was the first western lawyer to argue a case before the Supreme Court of the United States and served as United States District Attorney for Kentucky. While holding this office, Daveiss attempted to bring Aaron Burr to trial on a conspiracy charge, but failed, due to Judge Harry Innes' delaying tactics. After residing for a while at Frankfort, Daveiss moved to Owensboro where he owned several hundred acres of land. In 1811, he joined General William Harrison in the campaign against the Indians and was killed in the Battle of Tippecanoe.



Daviess County has produced seven United States Representatives and two United States Senators. The Senators were George M. Bibb and Thomas C. McCreery. Bibb became Secretary of Treasury under President John Tyler. Frederick A. Ames established a buggy factory in Owensboro in 1885. In 1912, anticipating the coming of the automobile, the company started to make them. Some years later it gave up this type of work and turned to making furniture, which it does at the present time.

Frank P. Sheehan started an airplane factory in 1926, but the manufacture of planes stopped when he was killed in the fourth one made by his company. C. E. Field, President of the Field Packing Company, established a packing plant in 1914, and was still active in its management in 1969. Roy Burlew established the Ken-Rad Corporation in 1918, which was bought by the General Electric Corporation in 1945.

## SOURCES OF INFORMATION

- 1/ U.S. Department of Commerce, Bureau of the Census, Census of Population, 1950, 1960. Department of Rural Sociology, University of Kentucky, Kentucky County Provisional Population Estimates: January 1, 1969, Owensboro-Daviess County Planning Commission.
- 2/ Kentucky Department of Economic Security, Division of Research and Statistics.
- 3/ Kentucky Department of Economic Security, Number of Workers in Manufacturing Industries Covered by Kentucky Unemployment Insurance Law Classified by Industry and County, September 1959, September 1968.
- 4/ Kentucky Department of Commerce, 1969 Kentucky Directory of Manufacturers.
- 5/ Kentucky Department of Economic Security, Division of Employment Service, Owensboro Office.
- 6/ Kentucky Department of Economic Security, Kentucky Labor Supply Estimates by County, January 1969. Kentucky Department of Commerce, Future Labor Supply By 1975.
- 7/ University of Kentucky, Office of Development Services and Business Research, Total Personal Income For Kentucky.
- 8/ University of Kentucky, Office of Development Services and Business Research, Per Capita Income in Kentucky.
- 9/ Louisville & Nashville Railroad Company, Louisville, Kentucky.
- 10/ A & H Truck Line, Inc., Terre Haute, Indiana.
- 11/ U.S. Department of Commerce, Bureau of the Census, Census of Agriculture, 1964. U.S. Department of Commerce, Environmental Science Services Administration, Climatological Data, 1967.

All other information was obtained from governmental offices, local businesses and organizations.