

1972

# Industrial Resources: Fayette County - Lexington

Kentucky Library Research Collections  
Western Kentucky University, [spcol@wku.edu](mailto:spcol@wku.edu)

Follow this and additional works at: [https://digitalcommons.wku.edu/fayette\\_cty](https://digitalcommons.wku.edu/fayette_cty)

 Part of the [Business Administration, Management, and Operations Commons](#), [Growth and Development Commons](#), and the [Infrastructure Commons](#)

---

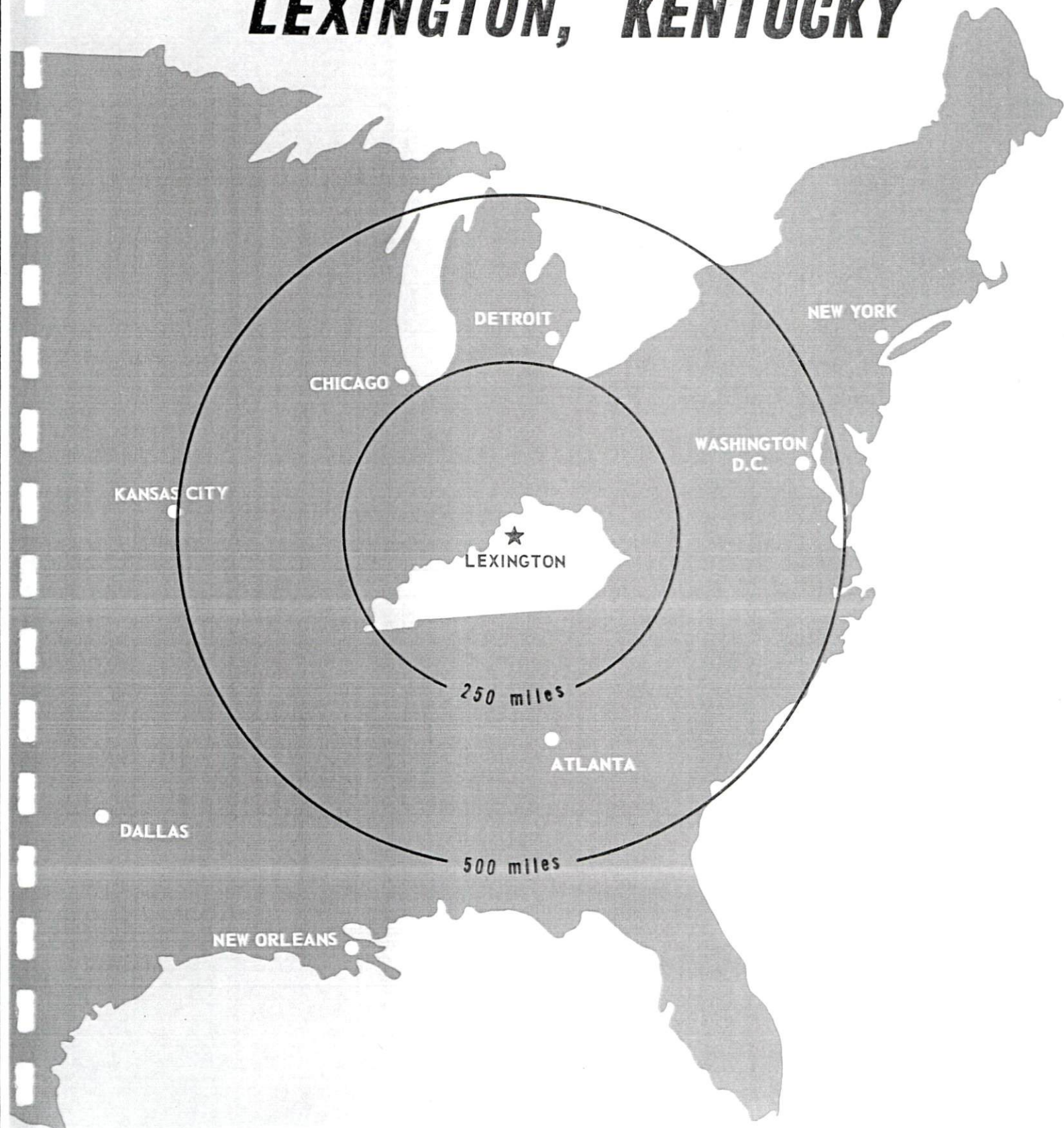
## Recommended Citation

Kentucky Library Research Collections, "Industrial Resources: Fayette County - Lexington" (1972). *Fayette County*. Paper 12.  
[https://digitalcommons.wku.edu/fayette\\_cty/12](https://digitalcommons.wku.edu/fayette_cty/12)

This Report is brought to you for free and open access by TopSCHOLAR®. It has been accepted for inclusion in Fayette County by an authorized administrator of TopSCHOLAR®. For more information, please contact [topscholar@wku.edu](mailto:topscholar@wku.edu).

# INDUSTRIAL RESOURCES

## ***LEXINGTON, KENTUCKY***



LEXINGTON INDUSTRIAL SITES

1972

For additional information concerning the following sites, contact D. Ray Gillespie, Lexington, Kentucky, Phone 254-4447; or the Kentucky Department of Commerce, Frankfort, Kentucky.

SITE #1: ACREAGE: 10 acres  
 LOCATION: Northwest side of city off Mercer Road  
 ZONING: Light industrial  
 HIGHWAY ACCESS: Access road required, 400 feet from Mercer Road  
 RAILROADS: Southern Railway along western boundary of site  
 WATER: Lexington Water Company  
 SIZE LINE: 12-inch  
 GAS: Columbia Gas of Kentucky, Inc.  
 SIZE MAIN: 12-inch  
 ELECTRICITY: Kentucky Utilities Company  
 SEWERAGE: Lexington Sewerage Department  
 OWNERSHIP: Southern Railway System

SITE #2: ACREAGE: 27 acres  
 LOCATION: North of city facing U. S. 25  
 ZONING: Agricultural  
 HIGHWAY ACCESS: U. S. 25  
 RAILROADS: Not rail served  
 WATER: Lexington Water Company  
 SIZE LINE: 8-inch  
 GAS: Columbia Gas of Kentucky, Inc.  
 SIZE MAIN: 8-inch  
 ELECTRICITY: Kentucky Utilities Company  
 SEWERAGE: None  
 OPTIONED BY: Oral option to Chamber of Commerce

SITE #3: ACREAGE: 392.9 acres  
 LOCATION: North of city on U. S. 25  
 ZONING: Agricultural  
 HIGHWAY ACCESS: U. S. 25 along western boundary of site  
 RAILROADS: Not rail served  
 WATER: Lexington Water Company  
 SIZE LINE: 8-inch  
 GAS: Columbia Gas of Kentucky, Inc.  
 SIZE MAIN: 8-inch  
 ELECTRICITY: Kentucky Utilities Company  
 SEWERAGE: None  
 OPTIONED BY: Oral option to Chamber of Commerce

SITE #4: ACREAGE: 40 acres  
 LOCATION: Partially within northern city limits  
 ZONING: Light industrial  
 HIGHWAY ACCESS: Russell Cave Road along eastern boundary of site  
 RAILROADS: Louisville & Nashville Railroad along west-northwestern boundary of site  
 WATER: Lexington Water Company  
 SIZE LINE: 16-inch line along eastern boundary  
 GAS: Columbia Gas of Kentucky, Inc.  
 SIZE MAIN: 8-inch main on site  
 ELECTRICITY: Kentucky Utilities Company  
 SEWERAGE: Lexington Sewerage Department  
 OWNERSHIP: International Order of Odd Fellows  
 AGENT: Citizens Union Bank, Lexington, Kentucky

SITE #5: ACREAGE: Approximately 1,000 acres  
 LOCATION: One-half mile east of city  
 ZONING: Agricultural  
 HIGHWAY ACCESS: Site is bound on west by Liberty Road, on south by Kentucky 1425, on east by I-75  
 RAILROADS: Chesapeake and Ohio Railway along southern boundary  
 WATER: Lexington Water Company  
 SIZE LINE: 12-inch line 1.5 miles from southern boundary; 6-inch line .5 mile from site  
 GAS: Columbia Gas of Kentucky, Inc.  
 SIZE MAIN: 12-inch main on site  
 ELECTRICITY: Kentucky Utilities Company  
 SEWERAGE: None  
 OWNERSHIP: Madden Farm  
 AGENT: First Security National Bank, Lexington, Kentucky

SITE #6: ACREAGE: 140 acres  
 LOCATION: Southeast of city on Todds Road  
 ZONING: Agricultural  
 HIGHWAY ACCESS: Kentucky 1425 along southern boundary of site, Liberty Road  
 RAILROADS: Chesapeake and Ohio Railway  
 WATER: Lexington Water Company  
 SIZE LINE: 6-inch  
 GAS: Columbia Gas of Kentucky, Inc.  
 SIZE MAIN: 12-inch  
 ELECTRICITY: Kentucky Utilities Company  
 SEWERAGE: None  
 OPTIONED BY: Oral option to Chamber of Commerce

MELBOURNE INDUSTRIAL PARK

ACREAGE: 165.42 total acres in park; 119.47 acres now available  
 LOCATION: North side of city on New Circle Road  
 ZONING: Light industrial  
 HIGHWAY ACCESS: U. S. 25, Newtown Pike access to New Circle Road  
 RAILROADS: Not rail served  
 WATER: Lexington Water Company  
 SIZE LINE: 20-inch  
 GAS: Columbia Gas of Kentucky, Inc.  
 SIZE MAIN: 4- and 6-inch mains on site  
 ELECTRICITY: Kentucky Utilities Company  
 SEWERAGE: Lexington Sewerage Department  
 OWNERSHIP: Melbourne, Inc.  
 Julius Fister, President  
 Vincent Fister, Sr., Agent

BLUE SKY INDUSTRIAL ESTATES

ACREAGE: 108 acres  
 LOCATION: Southeast of city on Kentucky 418  
 ZONING: Industrial  
 HIGHWAY ACCESS: Kentucky 418, I-75 interchange 1,500 feet  
 RAILROADS: Not rail served  
 WATER: Athens-Boonesboro Water District  
 GAS: Columbia Gas of Kentucky, Inc.  
 ELECTRICITY: Kentucky Utilities Company  
 SEWERAGE: Private treatment plant  
 OWNERSHIP: Blue Sky Estates  
 Richard Sutherland, Jr., Agent

UNITED STATES  
PUBLIC HEALTH SERVICE  
GEORGETOWN

SITE-3  
392.8 Ac.

SITE-2  
27 Ac.

MELBOURNE IND. PARK  
119.47 Ac.

SITE-1  
10 Ac.

SITE-4  
40 Ac.

- A WABCO
- B Cooper-Jarrett, Inc.
- C Coca-Cola Bottling Co.
- D United Parcel Service
- E American Can Co.
- F Square D Co.
- G Mengel Co.
- H Voque Rattan Mfg. Co.
- I Wickes Lumber Co.
- J Trane Co.
- K IBM
- L General Electric Plant





SITE-5  
± 1000 Ac.

SITE-6  
140 Ac.

BLUE SKY IND. ESTATES  
100 Ac.



INDUSTRIAL RESOURCES

LEXINGTON, KENTUCKY

Prepared by

The Kentucky Department of Commerce

in cooperation with

The Greater Lexington Area Chamber of Commerce

1972

## TABLE OF CONTENTS

<u>Chapter</u>	<u>Page</u>
INDUSTRIAL SITES . . . . .	i
LEXINGTON, KENTUCKY - A RESOURCE PROFILE . . . . .	1
THE LABOR MARKET . . . . .	5
Population Trends . . . . .	5
General Employment Characteristics, 1970 . . . . .	5
Manufacturing Employment Trends by Industry . . . . .	5
Major Lexington Manufacturing Firms, Their Products and Employment . . . . .	6
Wage Rates for Selected Occupations . . . . .	8
Labor Organizations . . . . .	8
Current and Future Labor Supply . . . . .	9
Total Personal Income . . . . .	9
Per Capita Personal Income . . . . .	9
EDUCATION . . . . .	.11
Public Schools . . . . .	.11
Parochial, Private and Special Schools . . . . .	.11
Vocational Schools . . . . .	.12
Colleges and Universities . . . . .	.12
TRANSPORTATION . . . . .	.14
Rail . . . . .	.14
Truck Service . . . . .	.14
Air . . . . .	.15
Bus . . . . .	.15
Taxi . . . . .	.15
Rental Services . . . . .	.15
POWER AND FUEL . . . . .	.16
Electricity . . . . .	.16
Natural Gas . . . . .	.16
WATER AND SEWERAGE . . . . .	.17
Water . . . . .	.17
Sewerage . . . . .	.18

<u>Chapter</u>	<u>Page</u>
LOCAL GOVERNMENT . . . . .	.19
City . . . . .	.19
County . . . . .	.19
Assessed Value of Property, 1970 . . . . .	.19
Local General Property Tax Rates Per \$100 of	
Assessed Valuation, 1971 . . . . .	.19
Utilities Gross Receipts Tax for Schools . . . . .	.19
Planning and Zoning. . . . .	.20
Safety . . . . .	.20
Police . . . . .	.20
Fire . . . . .	.20
Sanitation . . . . .	.20
HEALTH . . . . .	.21
Hospitals . . . . .	.21
Nursing Homes . . . . .	.21
Day Care Centers. . . . .	.21
Public Health . . . . .	.21
OTHER LOCAL FACILITIES . . . . .	.23
Communications . . . . .	.23
Library Services . . . . .	.23
Religious Institutions . . . . .	.24
Financial Institutions . . . . .	.24
Hotels and Motels. . . . .	.24
Clubs and Organizations. . . . .	.24
RECREATION. . . . .	.25
Local . . . . .	.25
Area . . . . .	.26
AGRICULTURE - NATURAL RESOURCES - CLIMATE . . . . .	.28
Agriculture . . . . .	.28
Natural Resources . . . . .	.28
Climate . . . . .	.28
HISTORY. . . . .	.29



# GENERAL HIGHWAY MAP FAYETTE COUNTY KENTUCKY

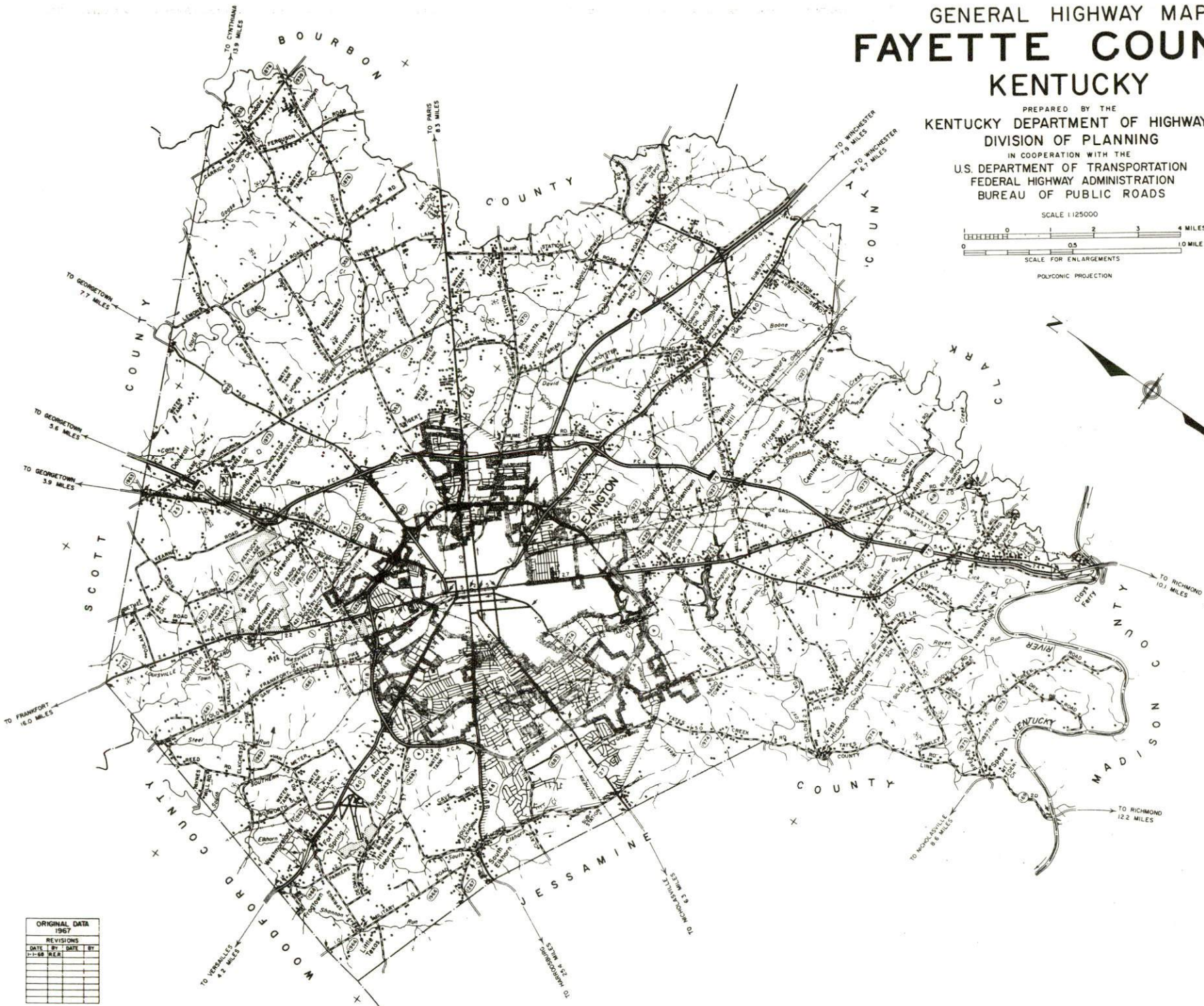
PREPARED BY THE  
KENTUCKY DEPARTMENT OF HIGHWAYS  
DIVISION OF PLANNING  
IN COOPERATION WITH THE  
U.S. DEPARTMENT OF TRANSPORTATION  
FEDERAL HIGHWAY ADMINISTRATION  
BUREAU OF PUBLIC ROADS

SCALE 1:125000



SCALE FOR ENLARGEMENTS

POLYCONIC PROJECTION



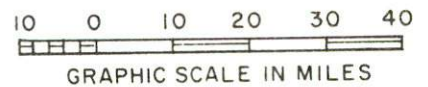
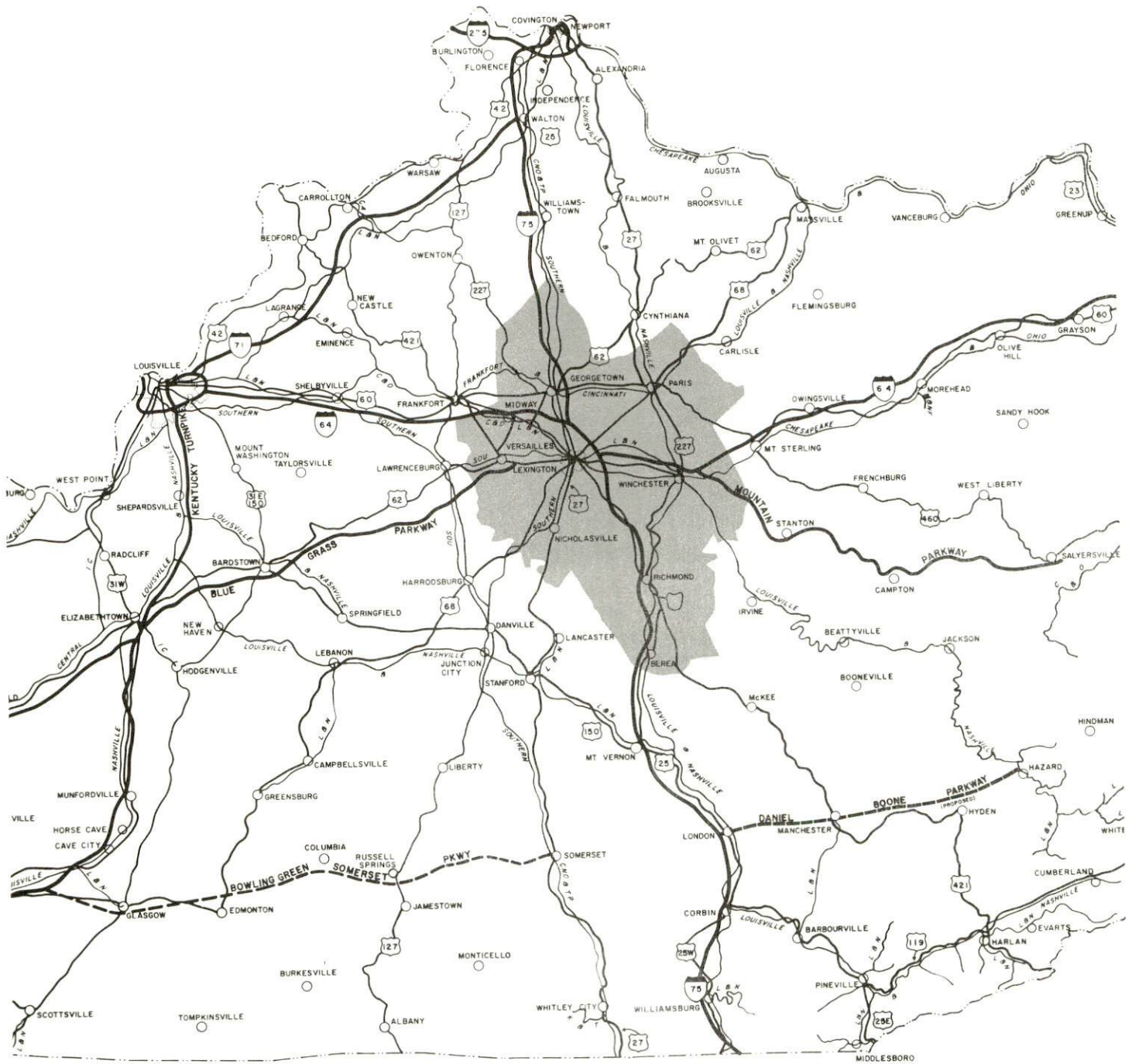
ORIGINAL DATA	1967
REVISIONS	
DATE BY	DATE BY
1-1-68 RER	



AERIAL VIEW OF LEXINGTON, KENTUCKY

# LEXINGTON LABOR MARKET AREA

\*Shaded area denotes labor market area



## LEXINGTON, KENTUCKY - A RESOURCE PROFILE

### Location

Lexington, in the heart of the Bluegrass Region of Kentucky, is an attractive, thriving city with a metropolitan population of over 174,000. Located on Interstate 75, Interstate 64, and the Blue Grass Parkway, Lexington forms the southeastern apex of the industrial triangle anchored by Louisville on the west and the Cincinnati metropolitan area on the north. Within the 80-mile legs of the triangle, is one-third of the state's population and one-half of its manufacturing jobs.

Lexington is an unusual blending of the industriousness of the Midwest and the adaptability and progress of the "new south." Farm estates and Revolutionary War customs and traditions stand serene, and welcome the sounds of bulldozers, electric saws and hammers, as new roads, new manufacturing plants, new schools and other facilities take shape almost daily. Lexington, named after the first battle in the War for Independence, is encircled by mushrooming suburbs - reflecting its phenomenal population growth in the last 10 years - and history-rich towns like Winchester, Versailles, Paris, and Danville; landscaped by beautiful countryside (covered by *Poa prantensis* or bluish-green grass); and laced by modern four-lane highways and tree-shaded country lanes.

Though no section in the United States is about to challenge the Bluegrass' long-held position as the world's largest burley tobacco market and the capital of Thoroughbred horse-breeding, the area, because of its many amenities, has experienced an extraordinary rate of industrial growth in postwar years. Where once tobacco, whiskey and horses were the area's principal industries, Lexington and her sister cities today produce a startling diversity of products, ranging from electric typewriters to peanut butter and from parachutes to electronic equipment. The tobacco farmer and the country gentlemen (who is more likely to raise cattle and sheep than horses) is as much at home in the Bluegrass as the industrialist and the physicist. And the area's increasing academic and cosmopolitan atmosphere is just as congenial to Van Cliburn and rock as it is to Op art and farmers Almanacs.

### The Economic Framework

Total employment in Fayette County averaged 92,900 in 1970 with manufacturing providing 17,100 of these jobs. Trade and services provided 29,370 jobs and government provided 22,400 jobs. Manufacturing employment has increased nearly 80 percent in the past ten years. The county's major industrial products are machinery and metal products.

Per capita personal income in the county in 1969 was \$3,920 or \$1,073 above the Kentucky average. This indicates a prosperous economy with adequate room for future economic growth.

Lexington is the hub of a labor market area that includes Fayette and its six surrounding counties. Area employment in 1970 totaled 139,600 with manufacturing providing 26,300 of these jobs. Trade and services provided 40,100 jobs and government 32,900 jobs. Area industrial employment is heaviest in machinery and metal products industries.

Despite important industrial gains in recent years the area still has a deficit of 1,563 manufacturing jobs when measured against the national industrial employment-population ratio. This indicates an area where the potential for additional manufacturing production is excellent.

#### Resources For Growth

1. There is a current labor supply of 3,880 men and 3,615 women available for industrial jobs in the labor market area. In addition, 16,865 young men and 16,355 young women will become 18 years of age by 1977 and potentially available for work.

2. The local transportation capability is excellent. Three railroads provide Lexington with complete rail service including piggyback facilities. There is easy access to Interstate 75 and Interstate 64 which are major highway arteries into the industrial south, midwest and east. Only a short distance from the city is the Blue Grass Parkway, an important link to the west. Four airlines provide commercial service to Lexington.

3. Energy - Natural gas is provided by Columbia Gas of Kentucky, Inc., and electricity by Kentucky Utilities Company. The local water supply from the Kentucky River is more than adequate for continued growth.

4. Industrial sites - Lexington has six industrial sites and two industrial parks.

5. Education is an important growth asset for Lexington with educational opportunities ranging from Montessori preschools through public, private, and parochial elementary and high schools to business colleges, universities, and theological seminaries. The Fayette County School System is rated as one of the most outstanding in Kentucky. Within a 50-mile radius of Lexington are eight senior colleges and universities and two junior colleges. At Lexington, are the University of Kentucky and Transylvania University.

The University of Kentucky is the state's primary public institution of higher learning. Opportunity for specialization is provided through ten colleges, schools of architecture, allied health professions, home economics, library science, a graduate school and a division of University extension.

Transylvania University, a private institution founded in 1780, has provided the nation with many famous statesmen.

6. Industrial Research - The University of Kentucky Research Foundation, an administrative division of the University, solicits and administers research contracts, grants, and gifts. Spindletop Research, the largest private research firm in the state, is also located in Lexington. It offers professional, scientific and management services to clients on a contractual basis.

#### Community Programs For Improvement

A federally assisted multi-million dollar Urban Renewal project is currently underway in the central business district of Lexington. The completed project envisions a downtown one-way couplet of streets, a 14-story Hilton Motor Inn, a high-rise bank-office building and a low-rent housing project. A \$1.5 million removal and relocation of railroad tracks from Vine Street has already been completed. A 1 1/4-mile section of Vine Street is being rebuilt to include a widened road area, landscaping, wide sidewalks and an open mall, in an effort to not only expedite traffic but also to beautify the downtown area. The land for the Hilton Motor Inn is under contract and Citizens Union Bank has acquired the land for its new bank-office building. The city is in the process of acquiring land along Vine Street to be used for a new civic center.

A \$2 million sewerage facilities expansion program is underway in Lexington. The project includes expansion of the existing treatment plant, and construction of a new treatment plant, trunk lines and holding lagoons.

Both Lexington and Fayette County have been attentive to transportation planning to accommodate the added number of motor vehicles which has accompanied the metropolitan area's industrial and residential growth. The New Circle Road, a 19 1/2-mile road which encircles Lexington, was completed in 1969 and has considerably reduced traffic on other major thoroughfares. Nicholasville Road, a main artery leading to the center of Lexington, is being widened to the Fayette-Jessamine County line. Under the Kentucky Highway Department's "Needs Plan" for Lexington, three projects are now under survey involving the extension of two roads and the widening of Paris Pike into a four-lane highway. In the immediate future, under a federal project for traffic safety and capacity, 30 intersections in Lexington will undergo construction of right-hand turn lanes to expedite traffic. The need for additional cargo transport has been met with the opening of air freight airlines at Lexington's Blue Grass Field.

Three major shopping areas have been developed to serve Lexington's growing suburban population.

The city has just recently opened a municipal 18-hole golf course in Lexington, and the county has undertaken an extensive parks program which involves the creation of four public parks totaling 156 acres outside the city limits. The 105-acre Shillito Park, near the Fayette Mall, will provide ample opportunity for both passive and active recreation. Facilities will include picnic areas, hiking trails, football fields, lighted and non-lighted softball and baseball fields, a concession stand, a zoo, and a swimming pool.

The new Good Samaritan Hospital, the Gross Distributing Company Warehouse, the W. T. Young Warehouse, Kentucky Utilities Service Center, and the Lexington Water Company Office are some of the new additions to the city of Lexington. A new Lexington Mall, a 5-story office building, an apartment complex, the Leestown Pike office building, the expansion of the Proctor & Gamble Company, and IBM Company, Woodhill Park subdivision, rebuilding inner-city schools, expansion of Central Baptist Hospital, St. Joseph Hospital, and the University of Kentucky Medical Center - all under construction, is strong proof that the city is progressive and geared for future growth.

#### Recreation, Entertainment, and Livability

Lexington and the Bluegrass Region offer the full spectrum of sophisticated entertainment, cultural and sporting events. The Central Kentucky Concert and Lecture Association presents an annual subscription series which brings to the city world-famous groups and individuals in the arts and sciences. There are three local symphony orchestras, theater groups which present more than twenty plays each year, and scores of free concerts, lectures and art exhibitions at Transylvania and the University of Kentucky.

The finest Thoroughbred and harness racing in the world is available at Keeneland Race Course and the Big Red Mile Trotting Track at several meets each year. The University of Kentucky provides nine months of sports excitement each year including the team coached by the Baron of Basketball, Adolph Rupp.

The scenic landscape of thoroughbred horse farms encourages relaxing drives through Fayette County, and the area is a paradise for the antique and handicraft collector. Reminiscent of Lexington's rich historic past are the preserved homes of Mary Todd Lincoln and General John Hunt Morgan. Ashland, the estate of Henry Clay, is especially beautiful in spring when the gardens are in full bloom.

Within a 50-mile radius of Lexington are five state parks, a national forest and Herrington Lake, providing ample camping grounds, water sports and picnic areas.

THE LABOR MARKET

POPULATION TRENDS <sup>1/</sup>

Area	Population			Percent Change	
	1970	1960	1950	1960-70	1950-60
Lexington	108,137	62,810	55,534	+72.2	+13.1
Labor Market Area	309,431	245,555	207,386	+26.0	+18.4
Fayette County	174,323	131,906	100,746	+32.2	+30.9
Bourbon County	18,476	18,178	17,752	+ 1.6	+ 2.4
Clark County	24,090	21,075	18,898	+14.3	+11.5
Jessamine County	17,430	13,625	12,458	+27.9	+ 9.4
Madison County	42,730	33,482	31,179	+27.6	+ 7.4
Scott County	17,948	15,376	15,141	+16.7	+16.8
Woodford County	14,434	11,913	11,212	+21.2	+ 6.3

GENERAL EMPLOYMENT CHARACTERISTICS, 1970 <sup>2/</sup>

Major Employment Group	Employment	
	Fayette County	Labor Market Area
TOTAL	92,900	139,600
Agricultural	2,100	9,300
Nonagricultural	90,800	130,300
Manufacturing	17,100	26,300
Trade and Services	29,370	40,100
Government	22,400	32,900

MANUFACTURING EMPLOYMENT TRENDS BY INDUSTRY  
SEPTEMBER 1970 AND 1960 <sup>3/</sup>

Industry	Fayette County			Labor Market Area		
	1970	1960	%Change	1970	1960	%Change
TOTAL	16,759	9,331	+ 79.6	27,833	15,015	+ 85.4
Food & kindred products	1,171	1,175	- 0.3	1,946	2,150	- 9.5
Tobacco	1,073	1,238	- 13.3	1,085	1,285	- 15.6
Apparel, textiles, leather	1,146	333	+ 70.9	2,542	1,403	+ 81.2
Lumber & furniture	140	153	- 7.7	612	364	+ 68.1
Printing, publishing, paper	1,292	787	+ 64.2	2,598	890	+191.9
Chemicals, petroleum, coal, rubber	734	62	+1083.9	1,180	632	+ 86.7
Stone, clay & glass	414	443	- 6.5	649	510	+ 27.3
Primary metals	33	0	-	805	300	+168.3
Machinery & metal products	10,195	5,032	+ 102.6	14,228	7,178	+ 98.2
Other	561	108	+ 419.4	1,688	303	+457.0

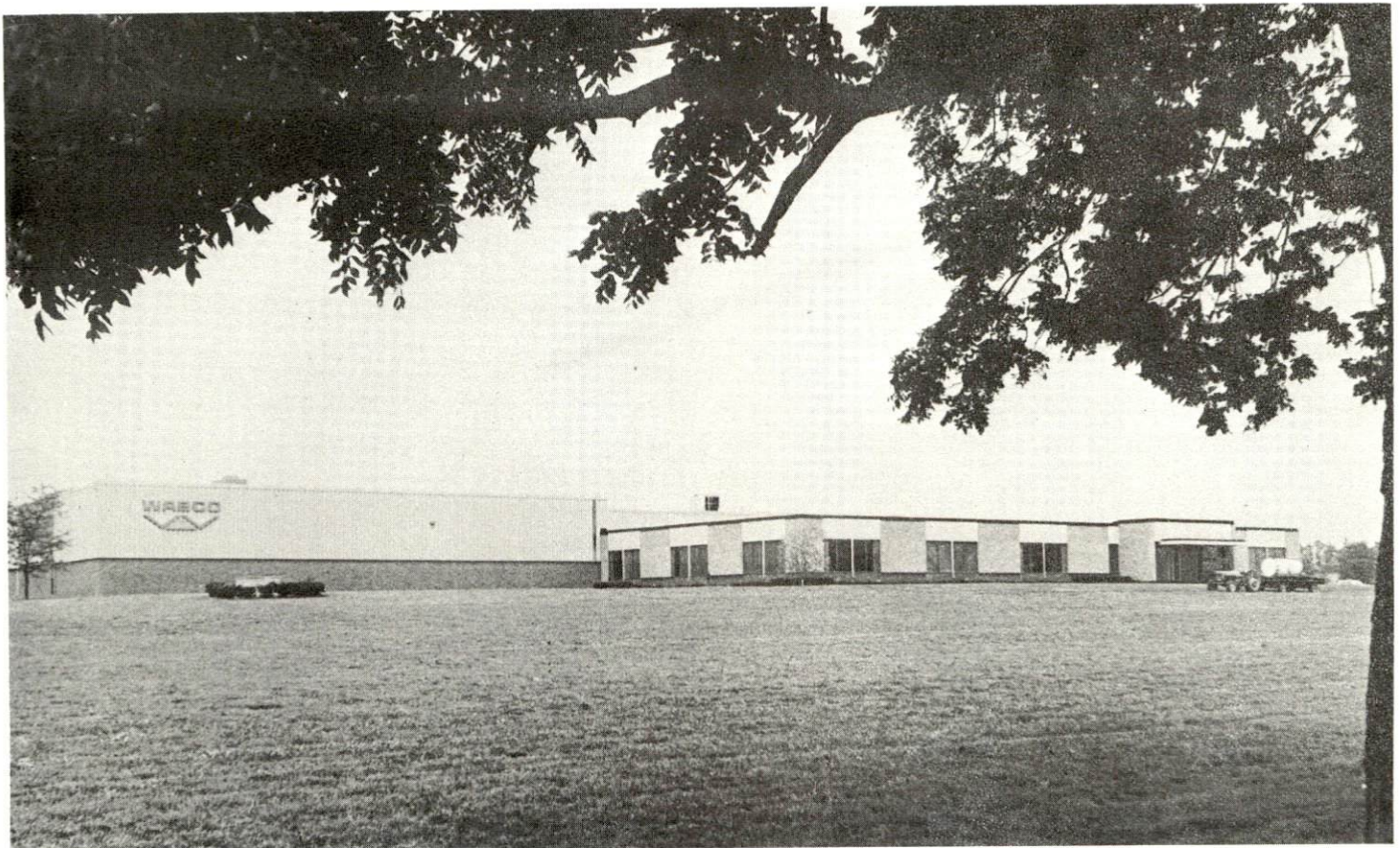


MAJOR LEXINGTON MANUFACTURING FIRMS,  
THEIR PRODUCTS AND EMPLOYMENT <sup>4/</sup>

Firm	Product	Employment		
		Total	Male	Female
American Can Co., Dixie Products	Paper cups, containers, plates	405	205	200
American Technical Industries, Inc.	Artificial Christmas wreaths, hair brush curlers, machine parts	450	300	150
The American Tobacco Co.	Tobacco stemming, redrying	121	100	21
Brown & Williamson Tobacco Corp.	Tobacco redrying	447	270	177
General Electric Co.	Sealed beam automotive headlamps	312	92	220
International Business Machines	Electric typewriters and supplies, photocopy machines	5,825	5,180	645
Irvin Industries, Inc.	Auto seat belts, metal parts, air structures	800	200	600
Lexington Herald-Leader Co.	Newspaper	380	310	70
Lexington Redryers, Inc.	Tobacco stemming, redrying	500	350	150
Mid-States Enterprises, Inc.	Electrical/mechanical subassembly, cigarette lighters, screen printing on metal	150		
Parker Seal Co.	Synthetic rubber rings, cords, seals, rubber products	650	297	353
Pepsi-Cola Bottling Co.	Carbonated beverages	166	156	10
Procter & Gamble Mfg. Co.	Peanut butter	132	100	32
Rainbo Baking Co.	Bread, rolls	193	183	10
R. J. Reynolds Tobacco Co.	Tobacco processing	400	300	100
The Square D Co.	Electrical equipment	1,642	1,059	583
Standard Products Co.	Motor vehicle weatherstrip	240	130	110
Trane Co.	Air conditioning equip- ment, heating equip- ment, air handling equipment	750	650	100
Vogue Rattan Mfg. Co., Inc.	Rattan furniture	140	115	25
V. R. Wesson Division, Fansteel Metallurgical Corp.	Carbide inserts, carbide tip tools, mining tools	225	145	80
Westinghouse Air Brake Co.	Pneumatic valves, pneumatic and hydraulic cylinders	300		



INTERNATIONAL BUSINESS MACHINE CORP.



WESTINGHOUSE AIR BRAKE CO.

WAGE RATES FOR SELECTED OCCUPATIONS  
LEXINGTON, KENTUCKY <sup>5/</sup>

<u>Classification</u>	<u>Wages Per Hour</u>		
	<u>Starting</u>	<u>Maximum</u>	<u>Prevailing</u>
<u>Production Employees</u>			
Assembler	\$2.00	\$2.75	\$2.50
Inspector	2.50	3.25	3.00
Production Laborer	2.65	3.00	2.85
Welder, Arc or Acetylene (Class-A)	2.75	4.00	3.50
<u>Service Employees</u>			
Electrician (Class-A)	\$3.75	\$7.00	\$6.00
Laborer	1.85	2.50	2.25
Machinist	3.50	4.50	4.00
Mechanic, Maintenance	2.75	3.75	3.25
Truck Driver, Industrial (Class-A)	2.50	3.75	3.25
<u>Office Employees</u>			
Bookkeeper	\$2.00	\$3.25	\$2.75
File Clerk	1.75	2.25	2.00
Receptionist	1.85	2.50	2.25
Secretary	2.50	3.75	3.50
Typist	1.85	2.50	2.20

LABOR ORGANIZATIONS

<u>Union</u>	<u>Representing Workers at:</u>
Tobacco Workers International	Brown & Williamson Tobacco Corp.
Typographical	Keystone Printery, Inc.
	Byron-Page Printing Co.
	The Thoroughbred Press
	Lexington Herald-Leader Co.
	Fritz Printing Co.
Teamsters	Parker Hannifin Co.
	F. W. Means Co.
	Vogue Rattan Manufacturing Co., Inc.
	Westinghouse Air Brake Co.
	Burley Belt Fertilizer Co.
International Brotherhood of	General Electric Co.
Electrical Workers (IBEW)	Square D Co.
Electrical Workers (IUE)	American Technical Machinery Co.

(contd.)

Union

Sterotypers, Mailers, Newspaper  
 Guild International Pressman  
 United Auto Workers

United Textile Workers of America  
 Sheet Metal Workers  
 Bakery and Confectionery Workers of  
 America  
 International Association of Machinists  
 and Aerospace Workers (IAM)  
 Tool & Die Making

Representing Workers at:

Lexington Herald-Leader Co.  
 Parker Hannifin Co.  
 Trane Co.  
 Standard Products  
 Irvin Industries, Inc.  
 Cranfill-Frey Co., Inc.

Rainbo Baking Co.

Square D Co.  
 Square D Co.

CURRENT AND FUTURE LABOR SUPPLY -  
 LEXINGTON LABOR MARKET AREA

Area	Current Labor Supply, 1971 <sup>6/</sup>			Future Labor Supply by 1977 <sup>7/</sup> (Becoming 18 Years of Age)		
	Total	Male	Female	Total	Male	Female
Labor Market Area	7,495	3,880	3,615	33,217	16,864	16,353
Fayette	2,611	1,498	1,113	18,523	9,388	9,135
Bourbon	606	192	414	2,193	1,135	1,058
Clark	833	396	437	2,756	1,389	1,367
Jessamine	597	284	313	1,908	973	935
Madison	1,923	1,075	848	4,146	2,111	2,035
Scott	583	281	302	1,958	968	990
Woodford	342	154	188	1,733	900	833

TOTAL PERSONAL INCOME <sup>8/</sup>

Area	1969*	1959	% Change
Fayette County	\$ 674,290,000	\$ 266,617,000	+141.3
Labor Market Area	1,009,232,000	418,297,000	+152.9
Kentucky	9,202,000,000	4,655,000,000	+ 97.6

PER CAPITA PERSONAL INCOME <sup>9/</sup>

Area	1969*	1959	% Change
Fayette County	\$3,920	\$1,954	+100.6
Labor Market Area	\$1,730 to 3,920	\$1,155 to 1,954	NA
Kentucky	2,847	1,552	+ 83.4

\* Preliminary figures.



SPINDLETOP RESEARCH

## EDUCATION

### Public Schools

	<u>Fayette County</u>
Total Enrollment	36,036
Elementary	19,626
Junior High	9,200
High School	7,210
Student-Teacher Ratio	20-1
Elementary	20-1
Junior High	20-1
High School	20-1
State Rating of High School	Senior - Comprehensive (4) Comprehensive and Merit (1) Junior - Standard (9)
Other Accreditations	Southern Association of Colleges and Schools 4 Junior High 4 Senior High 23 Elementary
Percent High School Graduates to College	57.6
Current Expenditures Per Pupil	\$546.31
Bonded Indebtedness, June 30, 1971	\$31,705,000

### Parochial, Private and Special Schools

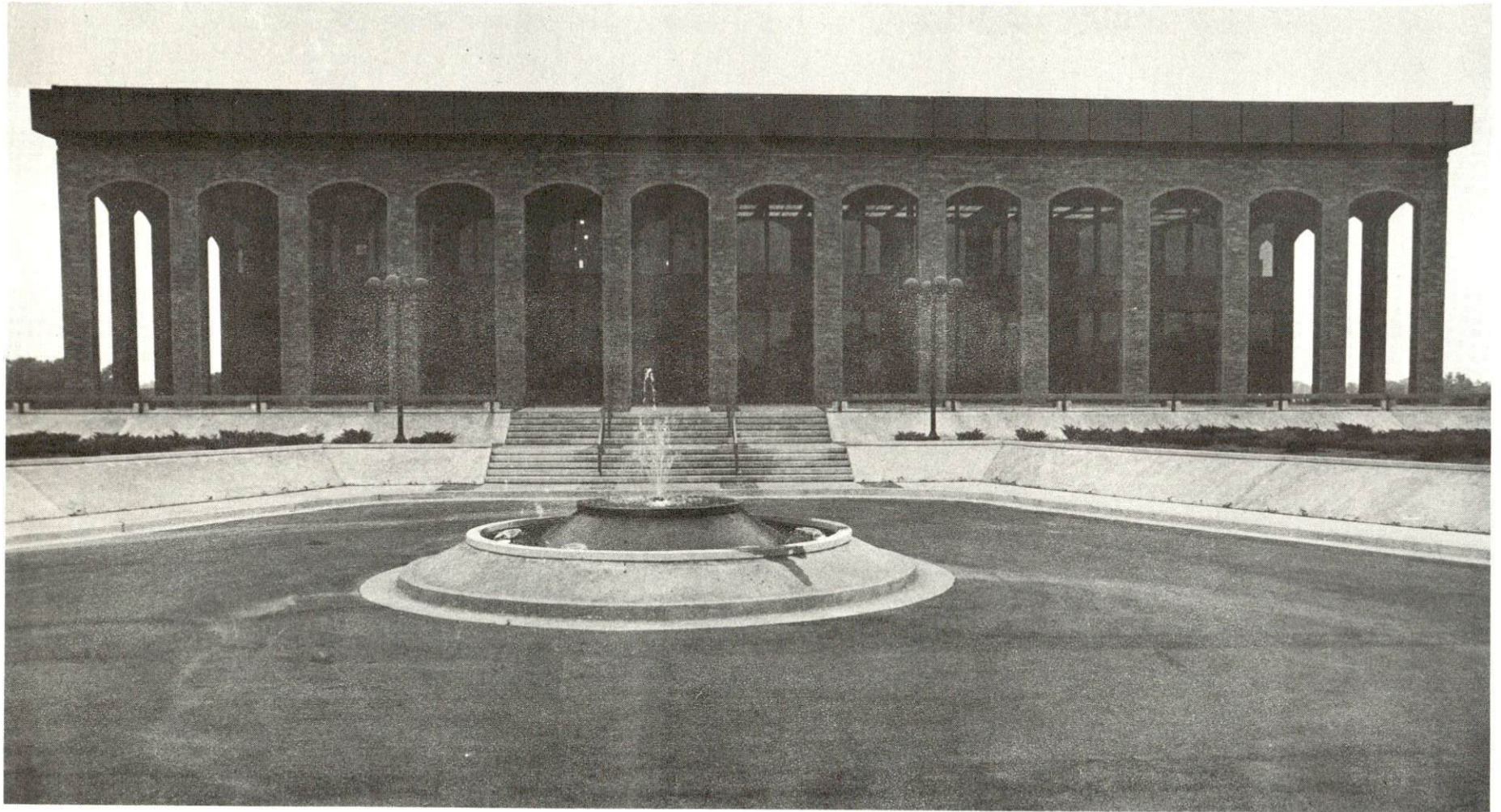
	<u>Private</u>	<u>Parochial</u>
Total Enrollment	848	1,362
Elementary	507	998
High School	286	364
Junior High	55	
Student-Teacher Ratio	12-1	18-1
Elementary	10-1	18-1
High School	23-1	
Junior High	8-1	

## Vocational Schools

	<u>Nearest Area School</u>	<u>Nearest Extension Center</u>
	Central Kentucky Area Vocational School	Fayette County Extension Center
Location	Lexington	Lexington
Curriculum	Accounting Junior Management General Clerical Secretarial-Steno Distributive Education Practical Nursing Electronics (Communications) Technical Drafting Auto Body Repair Auto Mechanics Commercial Foods Cosmetology Drafting Electricity Machine Shop Office Machine Repair Printing Radio & TV Repair Sheet Metal Tool & Die Making Welding	Horticulture Health Careers Nurse Aide Air Conditioning and Refrigeration Auto Body Repair Auto Mechanics Carpentry Electricity Machine Shop Welding

## Colleges and Universities

<u>Name</u>	<u>Kentucky Area - Within 50 Miles</u>		<u>Highest Degree Conferred</u>
	<u>Location</u>	<u>Enrollment</u>	
University of Kentucky	Lexington	19,434	Ph. D., M. D. D. M. D., J. D.
Transylvania University	Lexington	770	Masters
Eastern Kentucky University	Richmond	10,163	Masters
Kentucky State College	Frankfort	1,969	Baccalaureate
Georgetown College	Georgetown	1,300	Masters
Centre College	Danville	724	Baccalaureate
Berea College	Berea	1,448	Baccalaureate
Asbury College	Wilmore	1,088	Baccalaureate
Midway Junior College	Midway	183	Associate
Southeastern Christian Junior College	Winchester	122	Associate



COUNCIL OF STATE GOVERNMENTS



## TRANSPORTATION

### Rail

Lines serving - Louisville & Nashville Railroad, Chesapeake and Ohio Railway, and Southern Railway System

Services - Freight, passenger, siding, switching facilities, piggyback service, REA Express pickup and delivery

#### RAILWAY TRANSIT TIME FROM LEXINGTON, KENTUCKY, TO: 10/

City	No. of Days CL	City	No. of Days CL
Atlanta, Ga.	3	Los Angeles, Calif.	5
Birmingham, Ala.	3	Louisville, Ky.	1
Chicago, Ill.	3	Nashville, Tenn.	1
Cincinnati, Ohio	1	New Orleans, La.	3
Cleveland, Ohio	3	New York, N. Y.	4
Detroit, Mich.	4	Pittsburgh, Pa.	3
Knoxville, Tenn.	2	St. Louis, Mo.	2

### Truck Service

Twenty-nine trucking firms serve Lexington.

#### HIGHWAY MILES AND TRUCK TRANSIT TIME IN DAYS FROM LEXINGTON, KENTUCKY, TO SELECTED MARKET CENTERS

City	Highway Miles	Delivery Time <u>11/</u>		City	Highway Miles	Delivery Time	
		LTL	TL			LTL	TL
Atlanta, Ga.	387	3	2	Los Angeles, Calif.	1,911	6	5
Birmingham, Ala.	410	3	2	Louisville, Ky.	80	overnight	
Chicago, Ill.	374	2	1	Nashville, Tenn.	223	2	1
Cincinnati, Ohio	81	overnight		New Orleans, La.	790	3	2
Cleveland, Ohio	325	2	1	New York, N. Y.	740	3	2
Detroit, Mich.	346	2	1	Pittsburgh, Pa.	365	2	1
Knoxville, Tenn.	193	2	1	St. Louis, Mo.	344	2	1

Air

Local

Location: Blue Grass Field  
4 1/2 miles west of Lexington  
Runways: 3 paved  
Length: 6,500 feet; 3,500 feet; 3,500 feet  
Traffic Control: Tower, guards, approach control, ground control,  
ILS system  
Lighting: Approach lighting system, beacon, runways and  
obstruction lighted  
Services: 80, 100, and 145 octane; jet fuel; major A & E repairs;  
storage; restaurant; Weather Bureau; flight instructions;  
charter service; taxi; car rental; Eastern, Delta,  
Piedmont, and Allegheny Airlines

Bus

Southern Greyhound Bus Lines  
Lexington Transit Corporation

Taxi

24-hour, radio dispatched service - Fayette Cab Co. -  
Lexington Yellow Cab Co., Inc. - Red Top Cab Co.

Rental Services

Car, truck, and bus rental services

## POWER AND FUEL

### Electricity

Company serving Lexington - Kentucky Utilities Company  
Source of power - Kentucky Utilities Company  
Total generating capacity - 1,215,000 KW  
Industrial rates furnished by - Kentucky Utilities Company, Lexington,  
Kentucky

Company serving Fayette County - Blue Grass RECC and Clark RECC  
Source of power - East Kentucky Power Cooperative  
Total generating capacity - 548,000 KW  
Industrial rates furnished by - Blue Grass RECC, Nicholasville, Kentucky;  
Clark RECC, Winchester, Kentucky

### Natural Gas

Company serving - Columbia Gas of Kentucky, Inc.  
Source of supply - Columbia Gas Transmission Company  
Size of transmission lines - 12 inches  
Distribution lines - 2 to 16 inches  
BTU content - 1,030  
Specific gravity - .59 psi  
Distribution pressure - .25 psig to 200 psig

Rates - for large commercial and industrial customers are available by  
contacting Industrial Sales Department, Columbia Gas of Kentucky, Inc.,  
Post Office Box 241, Lexington, Kentucky 40501.

## WATER AND SEWERAGE

### Water

Company serving - Lexington Water Company  
 Source - Kentucky River and two reservoirs  
 Treatment plant capacity - 38,000,000 gpd (two plants)  
 Average daily consumption - 22,951,000 gallons  
 Peak daily consumption - 34,880,000 gallons  
 Type treatment - copper sulphate for algae control in impounding  
     reservoirs, aeration, coagulation with alum and lime, sedimentation,  
     activated carbon, chlorination, rapid sand filtration  
 Storage capacity - 10,565,000 gallons  
 Size mains - 6 through 30 inches  
 Average pressure - approximately 60 psi  
 Average temperature - 58 to 60 degrees

### MONTHLY WATER RATES FOR WHOLESALE AND INDUSTRIAL CONSUMERS

---

The following rates, subject to the minimum charges herein provided, shall apply for water furnished by meter measurement to residential, commercial, and industrial consumers:

	<u>Gallons Per Month</u> or <u>Gallons Per Quarter</u>	<u>Per M Gallons</u>
First	37,500	\$0.91
Next	225,000	.66
Next	2,250,000	.383
All quantities over	2,512,500	.253

#### Minimum Charges:

No bill will be rendered for less than the following amounts, according to the size of the meter installed:

5/8-inch meter	\$ 2.03 per month or	\$ 6.09 per quarter
3/4-inch meter	3.04 per month or	9.12 per quarter
1-inch meter	5.05 per month or	15.15 per quarter
1 1/2-inch meter	10.16 per month or	30.48 per quarter
2-inch meter	16.25 per month or	48.75 per quarter
3-inch meter	35.13 per month or	105.39 per quarter
4-inch meter	53.62 per month or	160.86 per quarter
6-inch meter	\$112.83 per month or	338.49 per quarter

Surface water sources - Kentucky River and South and North Fork of Elkhorn Creek

Average discharge - South Elkhorn Creek at Fort Spring 292 cfs (19 years record, USGS)

Expected ground water yield - 50 to 200 gpm in northwestern and southeastern tips of county; 5 to 50 gpm in western and southern part of county; 5 gpm or less in northeastern part of county

### Sewerage

Company serving - Lexington Sanitary Sewerage System

Design capacity - 13,200,000 gpd (2 plants)

Average daily flow - at capacity

Treatment - primary and secondary

Type treatment - (1) activated sludge; (2) activated sludge plus lagoons

Treated effluent discharged into - (1) Town Branch of South Elkhorn;  
(2) West Hickman Creek

Size of sanitary mains - 8 to 64 inches

Rates - no charge

## LOCAL GOVERNMENT

### City

Structure - Mayor - 4-year term; 4 commissioners - 2-year terms;  
city manager

Budget 1971 - General Fund \$14,149,827; Water and Sewer Fund \$2,008,000

Fees and licenses - Occupational (payroll) - 1 1/2 percent of (1) salaries, wages, commissions earned by every person in the city for work done or services performed or rendered in the city, and (2) the net profits of all businesses, professions or other activities conducted in the city.

### County

Structure - County Judge - 4-year term; 3 magistrates - 4-year terms

Budget 1971-72 - General Fund \$2,929,075; Road Fund \$271,755

### Assessed Value of Property, 1970

<u>Classes of Property*</u>	<u>Lexington</u>	<u>Fayette County</u>
Real Estate	\$662,710,155	\$1,120,196,900
Tangibles	141,541,000	508,300,624
Public Service	52,572,000	115,084,176 (1969)

### Local General Property Tax Rates Per \$100 of Assessed Valuation, 1971 <sup>12/</sup>

<u>Taxing Unit**</u>	<u>Lexington</u>	<u>Fayette County</u>
State	\$ .015	\$ .015
County	.1635	.1635
School	.834	.834
City	.617	
Total	\$1.6295	\$1.0125

### Utilities Gross Receipts Tax for Schools

Fayette County levies a 3 percent tax on utilities receipts for schools. This tax is paid by all consumers of utilities. Exempted are receipts from utilities services that are resold and the receipts from the sale of energy or energy producing fuels that exceed 3 percent of the cost of production in manufacturing, processing, mining or refining.

\* Property assessed at 100% of fair value.

\*\* Manufacturing machinery, raw materials inventories and goods in process inventories are not subject to local tax. State rate is only \$0.15 per \$100.

## Planning and Zoning

The Lexington-Fayette County Planning Commission has been very active for many years and has completed a large number of detailed plans. The Commission is presently updating and revising all plans and studies. All codes have been adopted.

## Safety

<u>Police</u>	<u>Lexington</u>	<u>Fayette County</u>
Total staff	265	44
Radio-patrol cars	98	17
Other equipment	standard	standard

## Fire

American Insurance Association Fire Rating	3	
Full-time staff	255	59
Volunteers		25
Equipment:		
1,000 gpm pumpers	11	1
750 gpm pumpers	5	4
500 gpm pumper		1
utility trucks	22	
command post and light unit	1	
automatic water tower	1	
rescue truck	1	
station wagon with first aid unit	2	2
100-foot aerial ladders	2	
water wagons (2,000-gallon capacity)	2	
Number of stations	11	3

## Sanitation

	<u>Lexington</u>	<u>Fayette County</u>
Type service	municipal	private
Cost:		
residential	none	contract
business	\$5 per dumpster after 2 pickups	contract
Collection frequency:		
residential	twice weekly	as needed
business	as needed	as needed
Trash pickup	weekly	as needed
Disposal method	incinerator	incinerator

## HEALTH

### Hospitals

General hospitals include:	<u>Beds</u>
Central Baptist Hospital	235
Good Samaritan Hospital	267
St. Joseph Hospital	315
University of Kentucky Medical Center	474
Veterans Administration Hospital	1,171

#### Special hospitals include:

Cardinal Hill Convalescent Hospital	50
Eastern State Hospital (State-operated mental institution)	1,125
Shriners Hospital for Crippled Children	83
U. S. National Institute of Mental Health Clinical Research Center (U. S. Public Health Service Narcotics Hospital)	497

### Nursing Homes

	<u>Number</u>	<u>Beds</u>
Extended care homes	5	415
Personal care homes	14	491

### Day Care Centers

Lexington has 20 state-licensed day care centers with the combined capability of caring for over 700 infants and children.

### Public Health

Facility - Lexington-Fayette County Health Department

Staff - 5 division directors, 13 sanitarians, 25 nurses, 3 licensed practical nurses, 1 home health aide, 1 auxiliary worker, 4 stenographers, 19 clerk-typists, 1 laboratory technician, 1 junior laboratory technician (part-time), 1 X-ray technician, 1 nutritionist, 2 maintenance men, 5 medical clinicians (part-time), 1 dental clinician (part-time), 1 dental hygienist (part-time), 1 public health nurse (part-time), 1 registered nurse (part-time), 1 venereal disease investigator (state employee), 2 medical consultants (part-time)

Budget 1971-72 - \$870,475





UNIVERSITY OF KENTUCKY MEDICAL CENTER

## OTHER LOCAL FACILITIES

### Communications

Telephone - General Telephone Company of Kentucky  
Services - standard

Telegraph - Western Union  
Services - standard

Postal - U. S. Post Office  
Class - 1, Part 1  
Mail received - 24 hours daily  
Mail dispatched - 24 hours daily

Newspapers -	Lexington Herald	Lexington Leader
Daily and circulation -	53,841	31,828
Weekly and circulation - (Sunday)	Lexington Herald-Leader - 76,626	
Other papers received from -	Louisville, Kentucky; Cincinnati, Ohio; New York, New York; and other major cities	

Radio - WLAP-AM, WVLK-AM and FM, WBLG-AM, WLEX-FM  
Stations received from - Louisville, Kentucky; Cincinnati, Ohio

Television - WKYT, WLEX, WBLG  
Reception from - Louisville, Kentucky; Cincinnati, Ohio  
Kentucky Educational Television - Lexington transmitter, Channel 46

### Library Services

Public Libraries - Lexington Public Library  
Size collection - 118,347 volumes  
Circulation, 1970-71 - 434,654  
Services - 4 bookmobiles, framed prints, records, well-organized children's program, a large meeting room, 265 current periodicals, 15 current newspapers, Wall Street Journal and The Courier Journal on microfilm (daily)

Private Libraries - University of Kentucky and Transylvania University  
Size collection - University of Kentucky, 1,250,000 volumes;  
Transylvania University, 83,000 volumes  
Special collections - University of Kentucky - particularly strong in regional Ohio Valley and Kentuckiana history, including manuscripts of prominent political figures; Transylvania - early medicine, early law, Kentuckiana history  
Services - both libraries are open to the public.

### Religious Institutions

Number of churches - over 100

Denominations - Assembly of God, Baptist, Catholic, Christian, Christian Science, Church of Christ, Church of God, Community Church, Eastern Orthodox, Episcopal, Jehovah's Witnesses, Latter Day Saints, Lutheran, Methodist, Nazarene, Presbyterian, Salvation Army, Seventh Day Adventist, Unitarian Universalist

Number of Synagogues - 2

Congregations - Orthodox, Reformed

### Financial Institutions

<u>Bank</u>	<u>Statement as of June 30, 1971</u>	
	<u>Assets</u>	<u>Deposits</u>
Bank of Commerce & Trust Co.	\$ 50,357,617	\$ 46,503,032
Bank of Lexington	12,452,888	11,054,061
Central Bank & Trust Co.	78,126,535	71,350,908
Citizens Union National Bank & Trust Co.	77,858,821	68,867,925
First Security National Bank & Trust Co.	170,950,133	149,423,065 (9/30/71)
Second National Bank & Trust Co.	44,505,336	40,142,784

<u>Savings and Loan Associations</u>	<u>Assets</u>	<u>Shared Accounts</u>
First Federal Savings & Loan Association	\$ 30,529,398	\$ 27,141,760
Lexington Federal Savings & Loan Association	39,473,821	34,781,123
New Union Federal Savings & Loan Association	6,913,181	6,261,191
Peoples Federal Savings & Loan Association	5,240,790	4,664,134

### Hotels and Motels

Total number - 29

Units - over 3,000

### Clubs and Organizations

There are more than 300 clubs and organizations in Lexington which include most major civic, business, professional, fraternal, charitable, sports, farm, and youth organizations.

## RECREATION

### Local

	<u>Lexington</u>	<u>Fayette County</u>
<b>Public Recreation Facilities</b>		
Supervised program -	yes	yes
Personnel -	28 (full-time); 169 (part-time)	15 (full-time); 250 (part-time)
Parks -	31	22
Playgrounds -	8	5 (schools); 13 (others)
Swimming pools -	6	1
Golf courses -	3	
Tennis courts -	22	14
Baseball diamonds -	22	10
Football fields -	2	2
Other -	3 community centers	

### Private Recreation Facilities

Country clubs -	5	
Golf courses -	5	
Swimming pools -	5	
Movie theaters -	6 indoor; 4 drive-in	
Bowling lanes -	3	
Other -	tennis courts; Hunt Club; Greater Lexington Aquatic Club	

### Tourist Attractions

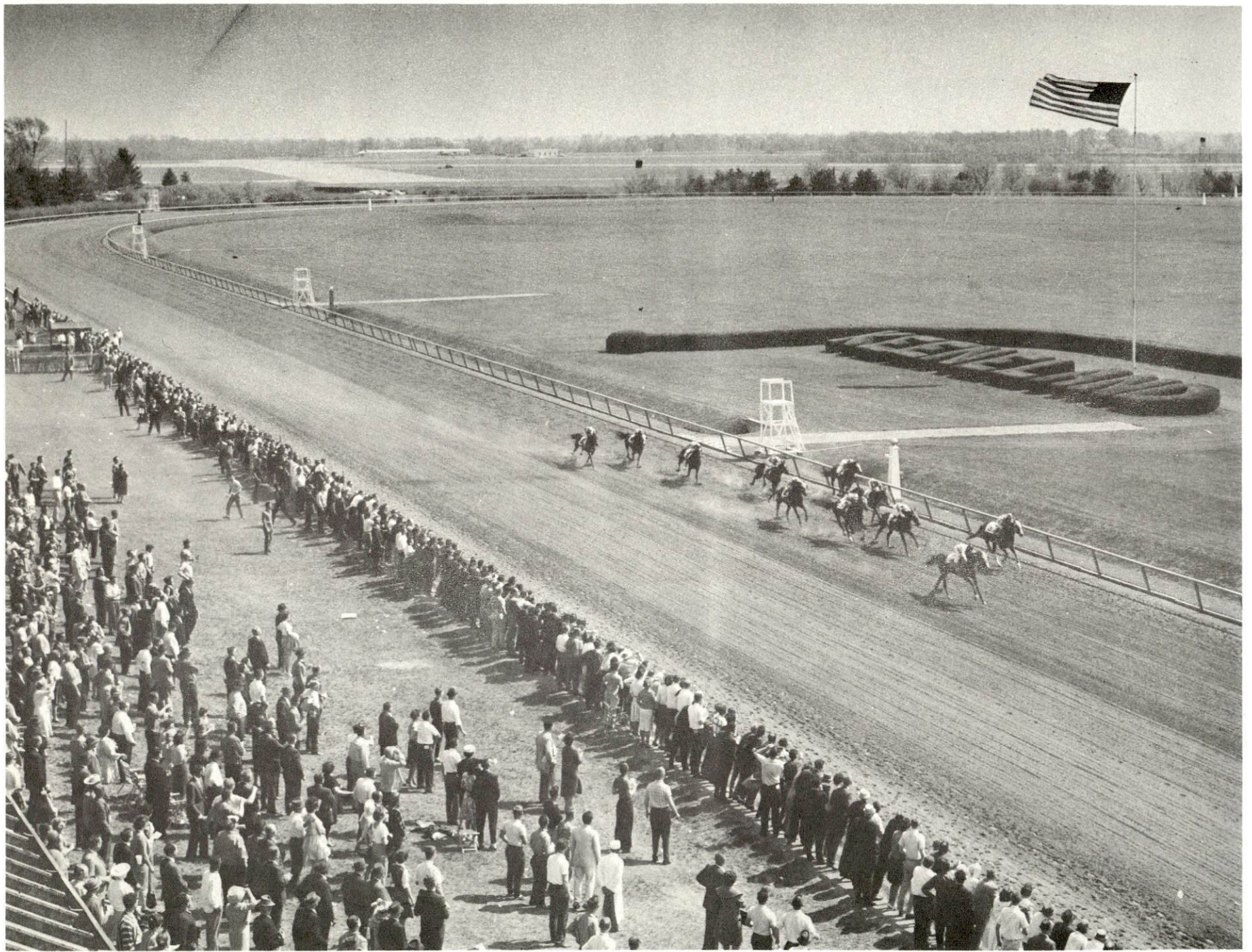
Blue Grass tours (operating April-October); University of Kentucky; Transylvania University; Ashland - home of the great statesman, Henry Clay; Keeneland Race Course; Big Red Mile Trotting Track; beautiful horse farms; Blue Grass Fair; Shrine Circus; Junior League Horse Show; Kentucky Training Center Sales Promotion

### Cultural Events

Lexington Art League, University of Kentucky Art Gallery, Living Arts and Science Centers, Lexington Children's Theater, Studio Players, University of Kentucky Theater Arts, Transylvania University Theater Arts, La Petite Puppet Theater, Central Kentucky Youth Symphony Orchestra, Lexington Philharmonic Orchestra, Central Kentucky Concert and Lecture Series, The Lexington Singers, University Concert Series, Chamber Music Society, Transylvania University Concerts and Recitals, Music Clubs

Area (Within 50 miles)

Fort Boonesborough State Park  
Old Fort Harrod State Park  
Natural Bridge State Resort Park  
Frankfort, Capital City  
Lincoln Homestead State Shrine  
Herrington Lake  
Daniel Boone National Forest  
Blue Licks Battlefield State Park  
Kincaid Lake State Park



KEENELAND RACE COURSE

AGRICULTURE - NATURAL RESOURCES - CLIMATE

Agriculture 13/

	<u>Fayette County</u>	<u>Labor Market Area</u>
Total land area (acres)	179,200	1,576,320
Percent of area in farm land	92.8	76.8
Number of farms	978	7,986
Average size of farms (acres)	170.1	151.7
1964 value of all farm products	\$20,442,302	\$ 77,350,013
Value per farm	20,902	9,685
Total crop sales	7,892,172	37,974,878
Total livestock & livestock products	12,536,333	39,321,358
1968 agricultural production included:		
Burley tobacco (lbs.)	12,628,000	232,153,000
Corn (bu.)	443,000	3,188,000
Cattle and calves (number)	57,500	302,800
Hogs and pigs (number)	9,700	88,100
Milk production (1967) (lbs.)	11,750,000	53,545,000

Natural Resources

Principal mineral resources	Limestone
Other mineral resources	Local clays and some vein minerals
Acres of commercial forest land	5,500
Most abundant tree species	Red oaks, beech, white oaks, hickories, black walnut, ash and hard maple

Climate 14/

	<u>Fayette County</u>
Temperature	
Annual mean (30-year record)	55.6 degrees
Average annual 1969	54.6 degrees
Record highest July, 1966 (7-year record)	98.0 degrees
Record lowest January, 1966 (7-year record)	-10 degrees
Seasonal heating degree-days (30-year record)	4,683
Precipitation	
Mean annual total (30-year record)	44.73 inches
Mean annual snow and sleet (25-year record)	16.0 inches
Total precipitation 1969	39.50 inches
Mean number days precipitation (.01 inch or more) (26-year record)	129
Average number days thunderstorms (26-year record)	47
Prevailing winds (17-year record)	South

## HISTORY

Fayette County dates from 1780 when it was part of Fincastle County, Virginia, and later designated Kentucky County, Virginia. When Kentucky became a state in 1792, Fayette County gave up some of its territory to form adjoining counties. The county is named for General Gilbert Montier de La Fayette of France who distinguished himself while fighting with George Washington's Continental Army during the American Revolution. Large tracts of the county's 280 square miles are beautiful gently rolling farm land.

Lexington, the county seat, was settled in 1779, and by 1815 was the largest town in the state and the social and cultural center of the west. Horse racing became popular very early in Lexington, and shortly after the first horse race course was established in 1789, a thriving breeding and racing industry developed which has grown to world fame.

In 1850, seventy years after its founding, Fayette County had a population of 22,735. By 1900 the population had grown to 42,071. A steady increase has made Fayette County one of the fastest growing counties in the state. By 1960 the population was 131,906 and in 1970 was 174,323.

Transylvania, the first institution of higher learning west of the Allegheny Mountains, was chartered in 1780 and still flourishes as one of the outstanding liberal arts colleges in the nation. Its list of graduates is a "Who's Who" of great men including Jefferson Davis and Stephen Austin.

The University of Kentucky, established in 1865, has grown from its land grant roots to a major center of advanced education and research.

Of the many famous personalities who have lived in Lexington, are Mary Todd Lincoln, and Henry Clay who is remembered in American history as the Great Compromiser. Lexington has also produced 13 U. S. Representatives; 11 U. S. Senators; Vice President of the United States, John C. Breckinridge; Secretary of the Treasury, George M. Bibb; U. S. Attorney General John Breckinridge, Postmaster General William T. Barry, and General John Hunt Morgan.

Today, two of Lexington's most famous citizens are Adolph Rupp, The Baron of Basketball, whose University of Kentucky Wildcats over a period of 36 years have compiled the best win record in the history of the game, and George Swinebroad, auctioneer par excellence, who has for many years sold millions of dollars of Thoroughbred horseflesh at Tattersalls and Keeneland, focusing world attention on this local industry.

Lexington with its rich historic and cultural heritage and thriving economy, looks forward to a future that combines the best of all its attributes in a new dimension of growth.



## SOURCES OF INFORMATION

- 1/ U.S. Department of Commerce, Bureau of the Census, Census of Population, 1950, 1960, 1970.
- 2/ Kentucky Department of Economic Security, Division of Research and Statistics.
- 3/ Kentucky Department of Economic Security, Number of Workers in Manufacturing Industries Covered by Kentucky Unemployment Insurance Law Classified by Industry and County, September 1970, September 1960.
- 4/ Kentucky Department of Commerce, Division of Research and Planning.
- 5/ Kentucky Department of Economic Security, Division of Employment Services, Lexington Office.
- 6/ Kentucky Department of Economic Security, Kentucky Labor Supply Estimates by County, January 1971.
- 7/ Kentucky Department of Commerce, Future Labor Supply by 1977.
- 8/ University of Kentucky, Office of Development Services and Business Research, Total Personal Income for Kentucky.
- 9/ University of Kentucky, Office of Development Services and Business Research, Per Capita Income in Kentucky.
- 10/ Louisville & Nashville Railroad, Louisville, Kentucky.
- 11/ Ecklar-Moore Express, Inc., Lexington, Kentucky.
- 12/ Kentucky Department of Revenue, Division of Research.
- 13/ U.S. Department of Commerce, Bureau of the Census, Census of Agriculture, 1964. U.S. Department of Agriculture and Kentucky Department of Agriculture, Kentucky Agricultural Statistics, 1970.
- 14/ U.S. Department of Commerce, Environmental Science Services Administration, Climatological Data, 1970.

All other information was obtained from governmental offices, local businesses and organizations.

This copy has been prepared by the Kentucky Department of Commerce,  
Division of Research and Planning, and the cost of printing paid from  
state funds.