

1974

Industrial Resources - Gallatin County - Warsaw, Sparta and Glencoe

Kentucky Library Research Collections
Western Kentucky University, spcol@wku.edu

Follow this and additional works at: https://digitalcommons.wku.edu/gallatin_cty

 Part of the [Business Administration, Management, and Operations Commons](#), [Growth and Development Commons](#), and the [Infrastructure Commons](#)

Recommended Citation

Kentucky Library Research Collections, "Industrial Resources - Gallatin County - Warsaw, Sparta and Glencoe" (1974). *Gallatin County*. Paper 8.
https://digitalcommons.wku.edu/gallatin_cty/8

This Report is brought to you for free and open access by TopSCHOLAR®. It has been accepted for inclusion in Gallatin County by an authorized administrator of TopSCHOLAR®. For more information, please contact topscholar@wku.edu.

INDUSTRIAL RESOURCES

WARSAW, SPARTA & GLENCOE KENTUCKY



GALLATIN COUNTY, KENTUCKY

GLENCOE AND WARSAW INDUSTRIAL SITES

1974

GLENCOE AND WARSAW INDUSTRIAL SITES

1974

For more information about the following sites, contact Mr. George Pollard, Glencoe, Kentucky; Mr. F. R. Weldon, Warsaw, Kentucky; or the Kentucky Department of Commerce, Capital Plaza Office Tower, Frankfort, Kentucky.

Glencoe

SITE #4: ACREAGE: 5 acres
LOCATION: Just west of Glencoe city limits
ZONING: None
HIGHWAY ACCESS: Access road needed
RAILROAD: Louisville and Nashville
Railroad along southern boundary of site
WATER: Tri-Village Water District
SIZE LINE: 6-inch line approximately 400 feet east of site
GAS: Natural gas not available
ELECTRICITY: Kentucky Utilities Company
SEWERAGE: Package plant necessary
OWNERSHIP: Private

SITE #8: ACREAGE: 99 acres
LOCATION: In county, approximately 6 miles west of Warsaw, adjacent to the Carroll-Gallatin County line
ZONING: None
HIGHWAY ACCESS: Paved road leading to U. S. 42
RAILROAD: Not rail served
GROUND WATER: Ground water available from Ohio River alluvium
GAS: Natural gas not available
ELECTRICITY: Owen County RECC
SEWERAGE: Package plant necessary
OWNERSHIP: Private

Warsaw

SITE #1: ACREAGE: 55 acres
LOCATION: In county, approximately 5 miles west of Warsaw on U. S. 42
ZONING: None
HIGHWAY ACCESS: U. S. 42 passes through site
RAILROAD: Not rail served
GROUND WATER: Ground water available from Ohio River alluvium
GAS: Natural gas not available
ELECTRICITY: Owen County RECC
SEWERAGE: Package plant necessary
OWNERSHIP: Private

SITE #9: ACREAGE: 80 acres
LOCATION: In county, approximately 6 miles west of Warsaw on the Carroll-Gallatin County line
ZONING: None
HIGHWAY ACCESS: U. S. 42 passes through north portion of site
RAILROAD: Not rail served
GROUND WATER: Ground water available from Ohio River alluvium
GAS: Natural gas not available
ELECTRICITY: Owen County RECC
SEWERAGE: Package plant necessary
OWNERSHIP: Private

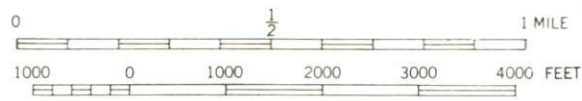


SITE 4
5 Ac.

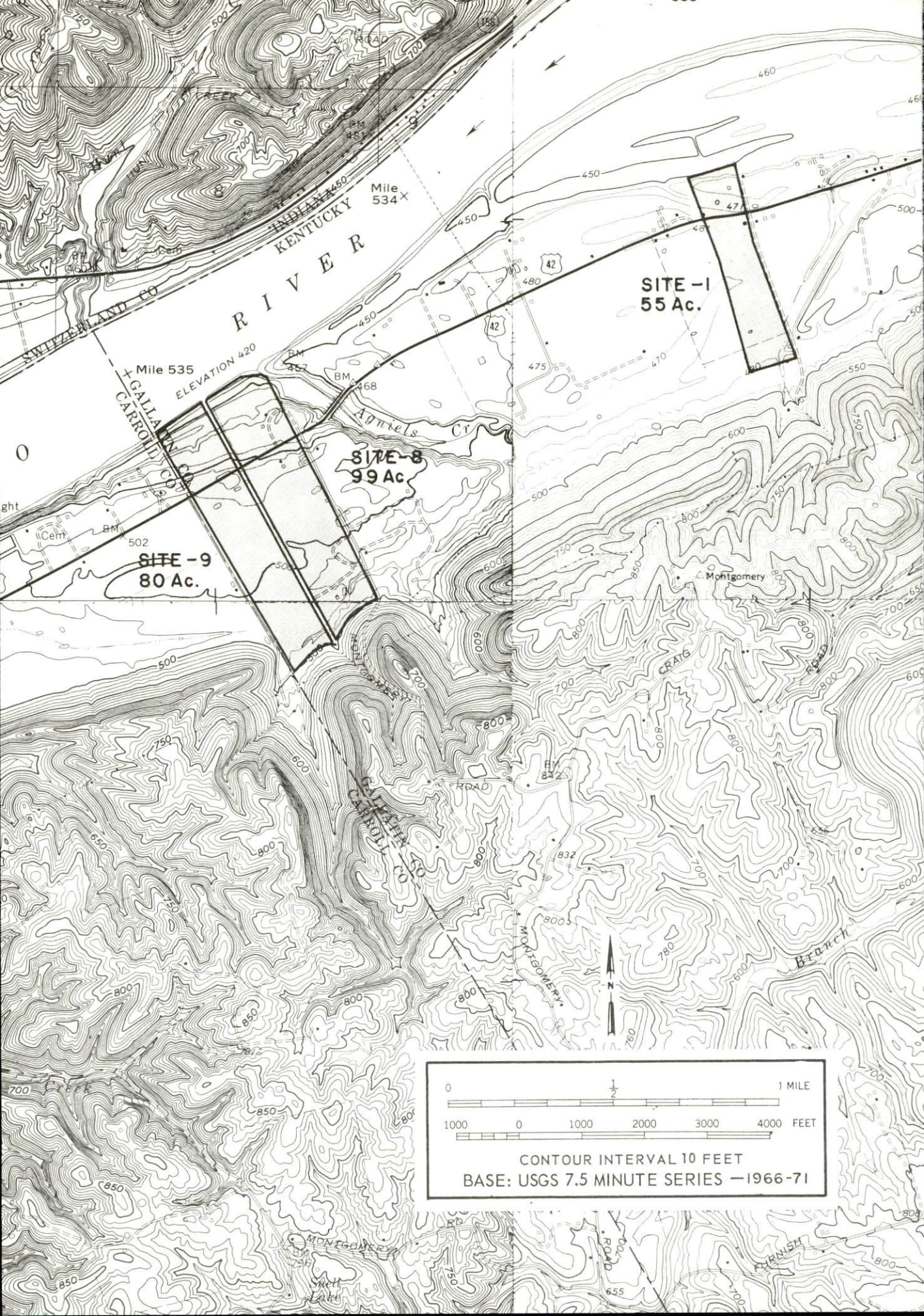
Glencoe

Gaging Sta.

CLLATTIN CO
OWEN CO



CONTOUR INTERVAL 20 FEET
BASE: USGS 7.5 MINUTE SERIES - 1969



Mile 535

ELEVATION 420

SITE -9
80 Ac.

SITE -8
99 Ac.

SITE -1
55 Ac.



CONTOUR INTERVAL 10 FEET
BASE: USGS 7.5 MINUTE SERIES —1966-71

INDUSTRIAL RESOURCES

WARSAW, SPARTA, AND GLENCOE, KENTUCKY

Prepared by

The Kentucky Department of Commerce

in cooperation with

The Gallatin County Development Association, Inc.

1974

Kentucky Library 67814

This copy has been prepared by the Kentucky Department of Commerce, Division of Research and Planning, and the cost of printing paid from state funds.

TABLE OF CONTENTS

<u>Chapter</u>	<u>Page</u>
INDUSTRIAL SITES	i
WARSAW, SPARTA, AND GLENCOE, KENTUCKY - A RESOURCE PROFILE	1
THE LABOR MARKET.	4
Population Trends	4
General Employment Characteristics, 1972	4
Manufacturing Employment Trends by Industry.	5
Warsaw Manufacturing Firms, Their Products and Employment	5
Wages.	6
Labor Organizations	7
Estimated Male Labor Supply	7
Estimated Female Labor Supply	7
Per Capita Personal Income.	8
TRANSPORTATION	9
Rail.	9
Truck Service	9
Air	10
Water	10
Bus	10
Rental Services.	10
POWER AND FUEL	11
Electricity.	11
Natural Gas	11
Other Fuels	12
WATER AND SEWERAGE	13
Water	13
Sewerage	14
LOCAL GOVERNMENT	15
City.	15
County.	15

App. 3 Commerce

4-29-74

<u>Chapter</u>	<u>Page</u>
Assessed Value of Property, 1973	15
Property Taxes	15
Local Property Tax Rate Per \$100 of	
Assessed Valuation, 1973	16
Planning and Zoning	16
Safety.	17
Police	17
Fire	17
Rescue Service	17
Sanitation	17
EDUCATION	18
Public Schools	18
Vocational Schools	18
Colleges and Universities	19
HEALTH.	20
Hospitals	20
Nursing Homes.	20
Public Health	20
OTHER LOCAL FACILITIES.	21
Communications	21
Religious Institutions	21
Financial Institutions	22
Hotels and Motels	22
Clubs and Organizations.	22
RECREATION	23
Local.	23
Area	23
AGRICULTURE - NATURAL RESOURCES - CLIMATE	24
Agriculture	24
Natural Resources	24
Climate.	25
HISTORY	26

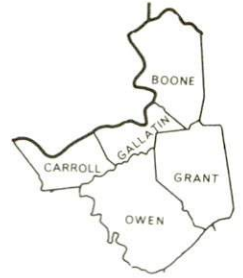
GENERAL HIGHWAY MAP GALLATIN COUNTY KENTUCKY

PREPARED BY THE
KENTUCKY DEPARTMENT OF HIGHWAYS
DIVISION OF PLANNING
IN COOPERATION WITH THE
U.S. DEPARTMENT OF TRANSPORTATION
FEDERAL HIGHWAY ADMINISTRATION

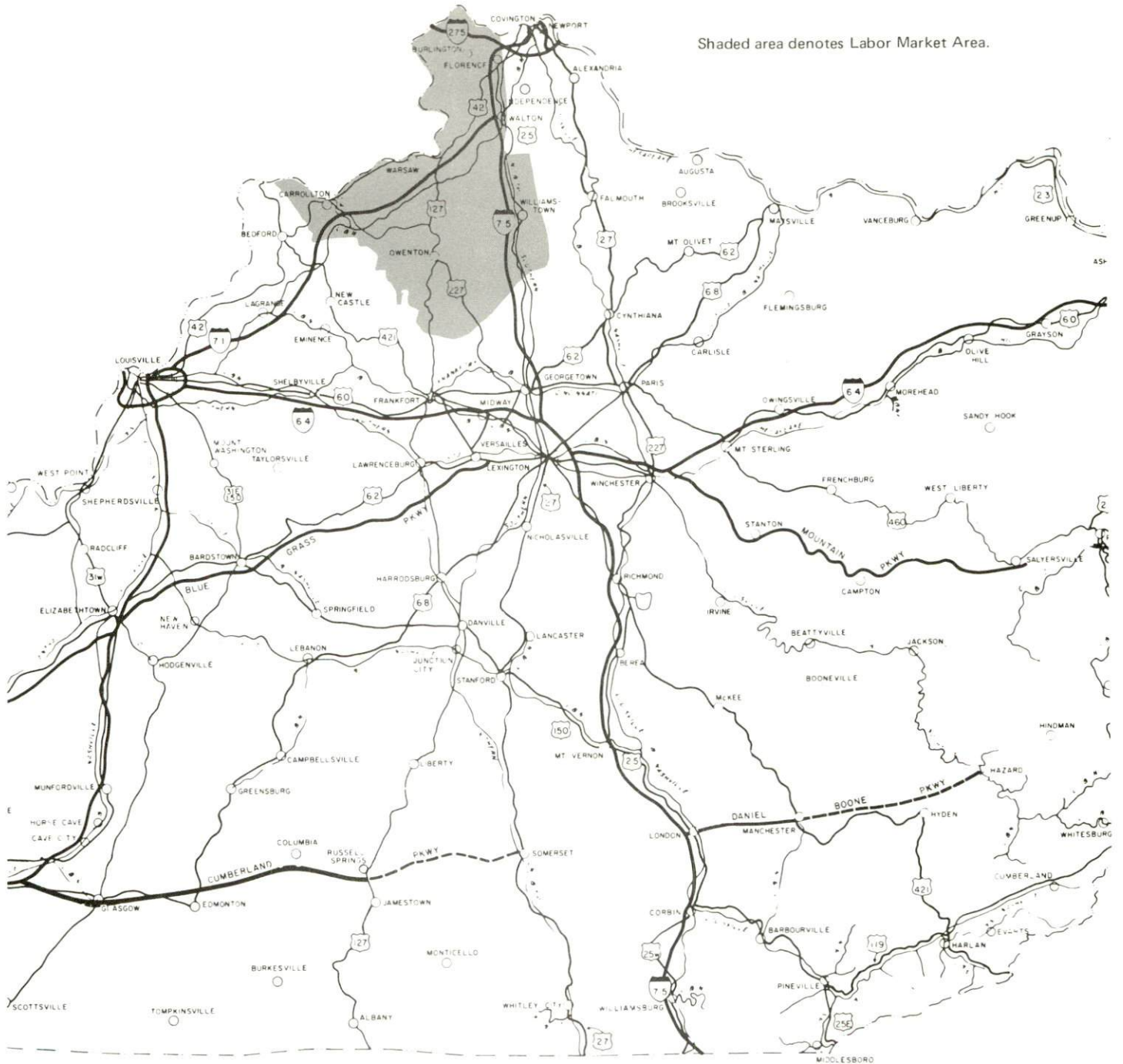
ORIGINAL DATA 1971			
REVISIONS			
DATE	BY	DATE	BY
1-1-72	MLM		
1-1-73	MLM		



WARSAW, SPARTA & GLENCOE LABOR MARKET AREA



Shaded area denotes Labor Market Area.



WARSAW, SPARTA, AND GLENCOE, KENTUCKY - A RESOURCE PROFILE

Warsaw, the county seat of Gallatin County, is a small, quiet river town situated in a beautiful and highly productive valley. Located in the north central portion of the county, Warsaw is 35 miles from Cincinnati, Ohio; 58 miles from Louisville, Kentucky; 322 miles from St. Louis, Missouri, and 238 miles from Nashville, Tennessee. In 1970, Warsaw had a population of 1,232.

Sparta, located in the southwestern portion of Gallatin County, had a population of 213 in 1970. Glencoe is a small community situated in the south central part of the county.

Gallatin County, with a land area of 100 square miles, is located in the north central portion of Kentucky, with the Ohio River forming the northern boundary of the county. In 1970, Gallatin County had a population of 4,134.

The Economic Framework

Total employment in Gallatin County averaged 1,140 in 1972, with agriculture providing 300 jobs, manufacturing 35, trade and services 210, and government 220. The major industrial product is wood household furniture.

Per capita income in the county in 1971 was \$2,456, a 94.2 percent increase since 1961.

In the Warsaw-Sparta-Glencoe labor market area, which includes Gallatin and the four adjoining Kentucky counties, 1972 total employment averaged 21,340, with agriculture accounting for 3,170 jobs, manufacturing 4,890, government 2,410, and trade and services 4,990. Manufacturing employment has increased 386.2 percent since 1963, with the sharpest employment gains in the machinery, metal products and equipment industries.

This area has a deficit of 1,118 manufacturing jobs when measured against the national industrial employment-population ratio. This indicates an area with a potential for additional manufacturing production.

Resources for Growth

1. There is a current estimated labor supply of 1,840 men and 2,450 women available for industrial jobs in the Kentucky labor market area. By 1979, an additional 3,550 men and 3,170 women will have become 18 years of age and potentially available for industrial jobs.

2. The transportation capability of Gallatin County is good. Interstate 71, 4 miles south of Warsaw, runs from Louisville up through Cincinnati and connects with Interstate 75 in Boone County. U. S. 42-127 and Kentucky routes 16, 35, 184, 455 and 465 also serve Gallatin County. The Louisville and Nashville Railroad serves Sparta and Glencoe. Commercial air service is available at Covington, 30 miles from Warsaw. Economic bulk transportation possibilities are offered on the Ohio River which constitutes the northern boundary of Gallatin County.

3. Warsaw, Sparta, and Glencoe are served electrical power by the Kentucky Utilities Company. Owen County RECC serves most of Gallatin County, with Kentucky Utilities serving the remaining part of the county. Union Light, Heat and Power provides natural gas service to Warsaw and Glencoe. Sparta does not have natural gas, but four major propane distributors and three major distillate fuel oil distributors serve the county. Raw water from the Ohio River is more than adequate for continued growth.

4. One university, four senior colleges, and one junior college are located within 50 miles of Warsaw. A state vocational school, 36 miles from Warsaw, offers 22 different fields of study. An area education center, only 17 miles from Warsaw, offers 7 courses.

Community Programs for Improvement

Warsaw Recently Warsaw has improved the police department by providing better training for its personnel and by upgrading their equipment. The river front where the boat races are held was improved and a chain-link fence was put around the baseball field. Road improvements, improving the surface drainage, and the development of a new subdivision are all underway.

Sparta The upgrading of streets, adding caution lights, and improving the railroad crossing, along with the remodeling of a hotel and a restaurant are recent improvements. Planned improvements include providing local fire protection, constructing a building for the fire station and purchasing the necessary equipment; and the Baptist Church plans to construct a new building.

Glencoe Recently, natural gas service and water service have been made available; while street improvements and upgrading are planned.

Gallatin County The Gallatin County School System, with a 100 percent certified teaching staff, has added several advanced courses at the high school level; adopted a supplementary reading program for grades 1-6; and has a summer library and reading program for ages 3 through 8, which is sponsored by the Warsaw Women's Club. Planned improvements

include: two mobile reading classrooms; two new teachers; and additional educational facilities for mentally retarded children in grades 4 through 8.

A Gallatin County Water District has been proposed and will serve most of Gallatin County.

Recreation, Entertainment and Livability

Gallatin County embraces some 15 miles of the Ohio River shore line which provides ideal boating and fishing. The new Lake Shore Development includes 1,000 acres of water, public boat ramps and docks, camping and cabins.

Big Bone Lick State Park, 26 miles from Warsaw, offers camping, picnic areas, playground, fishing, and boat rentals on 248 acres with sulphur springs. Excavation has revealed prehistoric animal remains and a museum houses these exhibits.

General Butler State Resort Park, 17 miles from Warsaw, consists of 809 acres and is the site of the Butler Home, a museum of Ohio River Lore. The park offers a lodge, restaurant, cottages, camping, picnic areas, playground, supervised recreation, hiking trails, swimming beach, a pool, fishing, boat rentals, horseback riding, golf, tennis, gift shop and museum.

Kincaid Lake State Park, near Falmouth, has 400 acres with a 220-acre lake, nature trails, swimming, beach, fishing, boats, paddle boats, boat motors, boat dock, picnic shelter, playground, small amphitheater, badminton, shuffleboard, miniature golf, and camping.

Blue Licks Battlefield State Park, near Mt. Olivet, open April 1 through November 1, is a 100-acre park on the site of the last battle of the Revolution, and the last Indian-Pioneer struggle in Kentucky. It offers an 80-foot Olympic pool, hiking trails, picnic shelter, playgrounds, swimming, fishing, and a museum featuring historical objects.

Fort Hill State Park, in Frankfort, consists of 28 acres and has civil war fortifications and picnic areas. Frankfort, the Capital city of Kentucky, boasts several historical points of interest.

With easy access to I-71, Louisville, Kentucky, and Cincinnati, Ohio, can be reached in less than an hour's driving time. These metropolitan areas offer the full spectrum of sophisticated entertainment, cultural and sporting events.

THE LABOR MARKET

POPULATION TRENDS

Area	Population				Percent Change	
	1972*	1970	1960	1950	1960-70	1950-60
Warsaw	N. A.	1,232	981	829	+25.6	+18.3
Sparta	N. A.	213	235	289	- 9.4	-26.8
Glencoe	N. A.	N. A.	N. A.	N. A.	N. A.	N. A.
Labor Market						
Area	66,000	62,938	51,511	45,065	+22.2	+14.3
Gallatin County	4,400	4,134	3,867	3,969	+ 6.9	- 2.6
Boone County	34,300	32,812	21,940	13,015	+49.6	+68.6
Carroll County	8,500	8,523	7,978	8,517	+ 6.8	- 6.3
Grant County	11,000	9,999	9,489	9,809	+ 5.4	- 3.3
Owen County	7,800	7,470	8,237	9,755	- 9.3	-15.6

*Provisional estimates.

Sources: U. S. Department of Commerce, Bureau of the Census, Census of Population, 1970, 1960, 1950. U. S. Bureau of the Census, Current Population Reports, Series P-26, June 1973.

GENERAL EMPLOYMENT CHARACTERISTICS, 1972

Major Employment Group	Employment	
	Gallatin County	Labor Market Area
TOTAL	1,140	21,340
Agricultural	300	3,170
Nonagricultural	840	18,170
Manufacturing	35	4,888
Government	220	2,410
Trade and Services	208	4,993
Other	377	5,879

Source: Kentucky Department of Economic Security, Division of Research and Statistics.

MANUFACTURING EMPLOYMENT TRENDS BY INDUSTRY
MARCH 1973 AND 1963

Industry	Gallatin County			Labor Market Area		
	1973	1963	% Change	1973	1963	% Change
TOTAL	22	34	- 35.3	5,343	1,099	+ 386.2
Food & Kindred						
Products	0	0	--	43	266	- 81.0
Tobacco	0	1	--	18	20	- 10.0
Apparel, Textiles,						
Leather	0	0	0	12	36	- 66.7
Lumber, Furniture	20	26	- 23.1	617	242	+ 155.0
Printing & Publishing,						
Paper	2	0	--	460	55	+ 736.4
Chemicals, Petroleum						
& Coal, Rubber	0	0	0	1,058	364	+ 190.7
Stone, Clay & Glass	0	7	-100.0	39	31	+ 25.8
Primary Metals	0	0	0	197	0	--
Machinery, Metal						
Products, Equip.	0	0	0	2,383	125	+1,806.4
Other	0	0	0	516	0	--

Source: Kentucky Department of Economic Security, Number of Workers in Manufacturing Industries Covered by Kentucky Unemployment Insurance Law Classified by Industry and County, March 1963, 1973.

WARSAW MANUFACTURING FIRMS,
THEIR PRODUCTS AND EMPLOYMENT

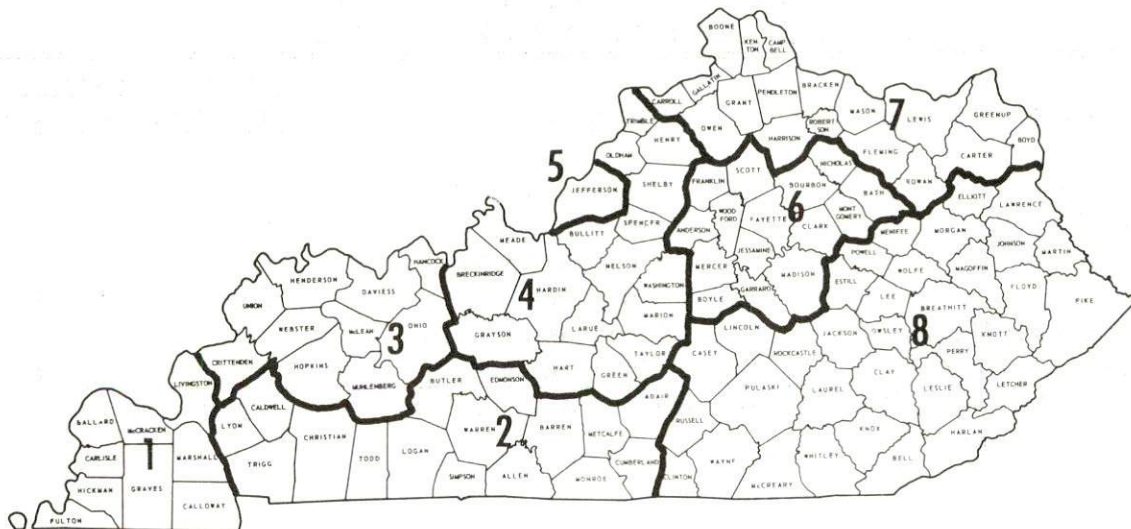
Firm (Establishment date)	Product	Employment		
		Total	Male	Female
Gallatin County Farm Supply (1951)	Prepared animal feed	6	3	3
Gallatin County News (1880)	Newspaper and job printing	2	2	0
The Warsaw Furniture Company (1902)	Wood household furniture	26	16	10

Source: Kentucky Department of Commerce, Division of Research and Planning.

WAGES

Occupational wage rates for specific industries are usually not available to most government agencies, and wage data furnished to state employment agencies by industrial employers is protected from disclosure by federal law. The most reliable up-to-date wage information can be obtained by direct contact with local employers.

Associated Industries of Kentucky, a voluntary organization of Kentucky businesses, regularly collects occupational wage rates and fringe benefits data from participating member firms. Data is compiled for over 130 clearly defined office, production, and service occupations. Tabulations are published for eight regions of Kentucky, as shown on the map below. It should be noted that the data may be weighted by the preponderance of firms in the larger cities and may be somewhat higher than the rates paid in the smaller communities. Data from these tabulations are available, upon request, from the Kentucky Department of Commerce, Frankfort, Kentucky 40601.



Associated Industries of Kentucky Area Wage Surveys

LABOR ORGANIZATIONS

There are no labor organizations presently representing manufacturing workers in Gallatin County.

ESTIMATED MALE LABOR SUPPLY WARSAW, SPARTA AND GLENCOE LABOR MARKET AREA

<u>Area</u>	<u>Current</u>				<u>Future</u>
	<u>Total</u>	<u>Not in Labor Force</u>	<u>Unemployed</u>	<u>Under- employed</u>	<u>Reaching 18 yrs. of age by 1979</u>
Labor Market					
Area	1,840	460	420	960	3,554
Gallatin	260	170	50	40	205
Boone	540	0	60	480	1,995
Carroll	310	40	170	100	466
Grant	210	0	50	160	514
Owen	520	250	90	180	374

Sources: Kentucky Department of Economic Security, Kentucky Labor Supply Estimates by County, 1973. Kentucky Department of Commerce, Future Labor Supply by 1979.

ESTIMATED FEMALE LABOR SUPPLY WARSAW, SPARTA AND GLENCOE LABOR MARKET AREA

<u>Area</u>	<u>Current</u>				<u>Future</u>
	<u>Total</u>	<u>Not in Labor Force</u>	<u>Unemployed</u>	<u>Under- employed</u>	<u>Reaching 18 yrs. of age by 1979</u>
Labor Market					
Area	2,450	880	280	1,290	3,170
Gallatin	380	260	20	100	222
Boone	750	0	50	700	1,776
Carroll	450	160	120	170	385
Grant	320	110	20	190	448
Owen	550	350	70	130	339

Sources: Kentucky Department of Economic Security, Kentucky Labor Supply Estimates by County, 1973. Kentucky Department of Commerce, Future Labor Supply by 1979.

PER CAPITA PERSONAL INCOME

<u>Area</u>	<u>1971</u>	<u>1961</u>	<u>% Change</u>
Gallatin County	\$2,456	\$1,265	+94.2
Labor Market Area			
Range	\$2,456 - 3,846	\$1,265 - 2,350	N.A.
Kentucky	3,310	1,677	+97.3
U. S.	4,164	2,265	+83.8

Sources: University of Kentucky, Office of Development Services and Business Research, Per Capita Income in Kentucky. U. S. Department of Commerce, Bureau of Economic Analysis, Survey of Current Business, August, 1973.

TRANSPORTATION

Rail

Line serving Sparta and Glencoe - Louisville and Nashville Railroad
(Glencoe is a prepaid station, operating in conjunction with the
Sparta station.)

Services - Daily freight service northbound and southbound on alternating days; 8 fast freights daily; switching and siding facilities; storage track for 35 cars; nearest piggyback facilities, DeCoursey, Kentucky or Cincinnati, Ohio, both of which are approximately 40 miles from Sparta

For details on routing, schedules, rates, and services, contact:

Manager of Industrial Development
Louisville and Nashville Railroad Company
908 West Broadway
Louisville, Kentucky 40203

Truck Service

Warsaw

Company

Lee Way Motor Freight, Inc.
O'Nan Transportation Company

Home Office

3000 West Reno
Oklahoma City, Oklahoma 73108
P. O. Box 308
Carrollton, Kentucky 41008

Other Freight Services

United Parcel Service

Nearest Shipping Center

Louisville, Kentucky

HIGHWAY MILES AND TRUCK TRANSIT TIME IN DAYS FROM WARSAW, KENTUCKY, TO SELECTED MARKET CENTERS

City	Delivery		City	Delivery	
	Highway Miles	Time TL		Highway Miles	Time TL
Atlanta, G.	490	2	Los Angeles, Calif.	2,165	4
Birmingham, Ala.	424	2	Louisville, Ky.	58	1
Chicago, Ill.	243	2	Nashville, Tenn.	238	2
Cincinnati, Ohio	35	1	New Orleans, La.	768	4
Cleveland, Ohio	296	2	New York, N.Y.	711	3
Detroit, Mich.	317	2	Pittsburgh, Pa.	366	2
Knoxville, Tenn.	241	2	St. Louis, Mo.	322	2

Source: Delivery time only - O'Nan Transportation Company, P. O. Box 308, Carrollton, Kentucky 41008.

Air

Nearest Commercial

Location: Greater Cincinnati Airport
Covington, Kentucky, 30 miles northeast of Warsaw

Runways: 3 paved

Length: 5,500, 7,800, 9,500 feet

Traffic Control: Tower, guards, ground control, clearance delivery, approach control, departure control, CVG, ILS, Automatic Terminal Information Service, radar

Lighting: Beacon, high intensity runway approach slope, REIL RW 9, boundary, sequenced flasher and obstruction lights, Red T Bar, center line and touchdown, zone lights

Services: Fuel 115/145 or lower, 650 turbine, storage, major A & E repairs, hotel, restaurant; TWA, Delta, American, Piedmont, Allegheny, Eastern, and North Central Airlines: airline limousine, taxi, weather bureau

Air Freight Service: Freight carrying airlines regularly service this terminal

Water - Water transportation on the Ohio River is available to Warsaw.

Bus - Southern Greyhound Bus Line serves Warsaw.

Rental Services - Car rentals are available.

POWER AND FUEL

Electricity

Company serving Warsaw, Sparta, Glencoe and part of Gallatin County -
Kentucky Utilities Company
Source of power - Kentucky Utilities Company
Total generating capacity - 1,215,000 KW
For industrial rates contact:

Kentucky Utilities Company
Box 926
Warsaw, Kentucky

Company serving Gallatin County - Owen County RECC
Source of power - East Kentucky Power Cooperative
Total generating capacity - 548,000 KW
For industrial rates contact:

Owen County RECC
Owenton, Kentucky

Natural Gas

Company serving Warsaw and Glencoe - Union Light, Heat and Power
Company
Source of supply - Columbia Gas Transmission Company
Size of transmission mains - 2 to 24 inches (supplier);
2 to 24 inches (distributor)
Distribution mains - 2 to 24 inches
Distribution pressure - Up to 60 psi
Btu content - 1,020 per cubic foot
Specific gravity - .60
For rates and supplies contact:

Gas Commercial Department
Union Light, Heat and Power Company
107 Brent Spence Square
Covington, Kentucky 41011

Other Fuels

Propane and butane -

Major distributors serving Warsaw, Sparta, and Glencoe:

Williams Energy Company, Warsaw
Crouch Gas, Glencoe
Southern States, Owenton
Suburban Propane Gas Company, Williamstown

Fuel Oils -

Distillate fuel oil -

Major distributors:

Ashland Petroleum Company, Warsaw
Union 76, Warsaw
Standard Oil Company, Sparta

Residual fuel oil - Arrangements must be made with the refinery

Low sulphur content coal - Available from eastern Kentucky

WATER AND SEWERAGE

Water

Company serving Warsaw - Warsaw Water Works
Source - 2 artesian wells
Treatment plant capacity - 300,000 gallons per day
Average daily consumption - 130,000 gallons
Peak daily consumption - 146,000 gallons
Type treatment - Chlorine
Storage capacity - 150,000 gallons
Size lines - 6, 4, and 2 inches
Average pressure - 45 psi
Average temperature - 50 degrees F.

MONTHLY WATER RATES FOR WHOLESALE AND INDUSTRIAL CONSUMERS

	2,000 gallons or less	\$2.75
Next	8,000 gallons	.80 per M gallons
Next	10,000 gallons	.70 per M gallons
Next	20,000 gallons	.60 per M gallons
All above		.50 per M gallons

Tap - on - fee - \$100

Name of water district - Tri-Village Water District
Area served - Sparta and Glencoe in Gallatin County
Date when water district began operating - 1961
Source of supply of treated water - City of Owenton Water and Sewer
Department
Type of additional treatment - Chlorination stations
Average amount of water used in a 24-hour period - 133,745 gallons
Storage capacity - 280,000 gallons
Average capacity - 280,000 gallons
Average pressure - 50 psi
Size lines - 2 through 6 inches
Rates -

Rate A: Tap - on - fee - \$450		
First	25,000 gallons	\$20.00 (minimum)
Over	25,000 gallons	.70 per M gallons
Field connection:		
First	1,000 gallons	\$ 1.50 (minimum)
Over	1,000 gallons	.70 per M gallons

Rates - (continued)

Rate B: Tap-on fee \$325

First	6,000 gallons	\$7.50 (minimum)
Next	4,000 gallons	1.00 per M gallons
Over	10,000 gallons	.85 per M gallons

Field connection:

First	1,000 gallons	\$1.50 (minimum)
Over	1,000 gallons	.85 per M gallons

Rate C: Tap-on fee \$200

First	1,250 gallons	\$4.50 (minimum)
Next	3,750 gallons	1.40 per M gallons
Over	5,000 gallons	1.00 per M gallons

A fire hydrant fee of 25 cents is charged monthly on buildings within 500 feet of a fire hydrant. In case of a fire, people paying this fee are not charged for the water used to fight the fire.

Surface water sources - Ohio River at Eagle Creek

Average discharge - Ohio River at Cincinnati 96,810 cfs (23-year record USGS); Eagle Creek at Glencoe 532 cfs (39-year record, USGS)

Expected ground water yield - 500 to 1,000 gpm along Ohio River; 5 to 50 gpm along Kentucky River and Eagle Creek; 5 gpm or less in remainder of county

Sewerage

Company serving Warsaw - Warsaw Water Works

Design population - 1,660

Average daily flow - 60,000 gallons

Treatment - Primary

Type treatment - Lagoons

Treated effluent discharged into - Craig's Creek

Size of sanitary mains - 6 to 8 inches

Size of storm mains - 10 to 30 inches

Rates - 50 percent of monthly water bill

Tap-on fee - \$75

Sparta and Glencoe do not have municipal sewerage systems.

LOCAL GOVERNMENT

City

Warsaw

Structure - Mayor - 4-year term; 6 councilmen - 2-year terms

Budget 1973-74 - General Fund \$40,100

Water and Sewer Fund 47,320

Fees and licenses - Occupational - \$10 to \$150 annually; trucking
\$15 and \$25 annually

Sparta

Structure - 5-member board of trustees

Budget 1973-74 - General Fund \$ 1,550

Fees and licenses - Trucking licenses - \$10 to \$15 annually

Glencoe

Structure - 5-member board of trustees

Budget 1973-74 - General Fund \$ 5,426

Fees and licenses - Business licenses \$5 to \$45 annually

County

Structure - County Judge - 4-year term; 5 magistrates - 4-year terms

Budget 1973-74 - General Fund \$94,728; Road Fund \$64,047

Assessed Value of Property, 1973

<u>Classes of Property</u>	<u>Warsaw</u>	<u>Sparta</u>	<u>Glencoe</u>	<u>Gallatin County</u>
Real Estate	\$4,538,695	\$463,060	\$732,115	\$21,432,594
Tangibles	1,292,055	105,650	123,662	5,337,311
Public Service				5,907,742

Property Taxes

Land and buildings are taxed by the state and may be taxed by local jurisdictions. The state rate is \$0.015 per \$100 of assessed valuation.

Tangible personal property owned by manufacturers (automobiles, trucks, finished good, office furniture, office equipment) is taxed by the state at \$0.15 per \$100 and may be taxed by local jurisdictions.

Manufacturing machinery, raw materials inventories, and goods in process inventories are not subject to local taxation. The state rate is \$0.15 per \$100.

Property stored in public warehouses is not subject to local taxation. The state rate is only \$0.015 per \$100.

All property is assessed at 100 percent of fair cash value.

Local Property Tax Rate Per \$100 of Assessed Valuation, 1973*

<u>Taxing Jurisdiction</u>	<u>Warsaw</u>	<u>Sparta</u>	<u>Glencoe</u>	<u>Gallatin County</u>
County	\$.200	\$.200	\$.200	\$.200
School	.549	.549	.549	.549
City	.290	N.A.	.300	

Planning and Zoning

Warsaw

City agency - Warsaw Planning Commission

Zoning enforced - City only

Subdivision regulations enforced - City and 5 miles beyond the city limits

Local codes enforced - Building and housing

Mandatory state codes enforced - Plumbing, National Fire Protection Association Code, National Building Code (for major buildings and residential construction containing more than 12 bedrooms per building)

Sparta

City agency - Sparta Planning Commission

Zoning enforced - City only

Mandatory state codes enforced - Plumbing, National Fire Protection Association Code, National Building Code (for major buildings and residential construction containing more than 12 bedrooms per building)

Glencoe

County agency - Gallatin County Planning Commission

Zoning enforced - City only

Subdivision regulations enforced - City and 5 miles beyond the city limits

Mandatory state codes enforced - Plumbing, National Fire Protection Association Code, National Building Code (for major buildings and residential construction containing more than 12 bedrooms per building)

*Kentucky Department of Revenue, Kentucky Property Tax Rates, 1973.

Safety

<u>Police</u>	<u>Warsaw</u>	<u>Sparta</u>	<u>Glencoe</u>	<u>Gallatin County</u>
Total staff	3	1	1	2
Radio-patrol cars	1			1

Fire

American Insurance

Association Fire Rating	7		10	
Volunteers	25		15	25

Equipment:

1,000 gpm pumpers	1			1
750 gpm pumpers	1		1	
500 gpm pumpers	1		1	1
Utility trucks	1			2
Other			1,000 gallon tank truck	Jeep for grass fires

Rescue Service

Gallatin County Rescue Squad:

Number of volunteers - 25

Equipment - Ambulance, jeep, fire truck, response truck, and U. S.

Army Duck

Personnel training - First aid

Sanitation

	<u>Warsaw</u>	<u>Sparta</u>	<u>Glencoe</u>	<u>Gallatin County</u>
Type service	Municipal	Private	Private	Private
Fee charged:				
residential	\$2.50	\$3.00	\$2.00	Contract
	monthly	monthly	monthly	
business	Contract	\$5.00	\$3.00	Contract
		monthly	monthly	
Collection frequency:				
residential	Weekly	Weekly	Weekly	When desired
business	Triweekly	Weekly	Weekly	When desired
Trash pickup	None	Weekly	Weekly	When desired
Disposal method	Landfill	Landfill	Landfill	Landfill

EDUCATION

Public Schools

	<u>Gallatin County</u>
Total Enrollment (Fall 1972)	1,006
Elementary	762
High School	244
Student- Teacher Ratio	27-1
Elementary	31-1
High School	19-1
Percent High School Graduates to College	27.0
Expenditures Per Pupil (1971-72)	\$492.05
Bonded Indebtedness, June 30, 1972	\$159,000

Vocational Schools

	<u>Nearest State School</u>	<u>Nearest Area Education Center</u>
Location	Northern Kentucky State Vo- cational- Technical School Covington	Carroll County Area Voca- tional Education Center Carrollton
Miles Distant	36 miles from Warsaw	17 miles from Warsaw
Curriculum	Data Processing Clerical Secretarial Marketing and Distributive Education Practical Nursing Child Care Clothing Service Food Service Learning Lab Electronics (Technical) Air Conditioning and Refrigeration Auto Body Repair Auto Mechanics	Clerical Secretarial Air Conditioning and Refrigeration Carpentry Electricity Auto Mechanics Welding

(continued)

Vocational Schools (continued)

	<u>Nearest State School</u>
Curriculum	Carpentry
	Commercial Art
	Commercial Foods
	Cosmetology
	Drafting
	Machine Shop
	Printing
	Radio and TV Repair
	Welding

Arrangements can be made to provide training in the specific production skills required by an industrial plant. Instruction may be conducted either in the vocational school or in the industrial plant, depending upon the desired arrangement and the availability of special equipment.

Colleges and Universities

<u>Name</u>	<u>Area - Within 50 miles</u>		<u>Highest Degree Conferred</u>
	<u>Location</u>	<u>Enrollment (Fall 1972)</u>	
Kentucky State University	Frankfort	1,961	Masters
Midway Junior College	Midway	252	Associate
Georgetown College	Georgetown	1,243	Masters
Thomas More College	Ft. Mitchell	1,589	Baccalaureate
Northern Kentucky College	Covington	4,099	Baccalaureate
Hanover College	Hanover, Indiana	1,011	A. B.

HEALTH

Hospitals

<u>Nearest General Hospital</u>	<u>Location</u>	<u>Beds</u>
Carroll County Memorial Hospital	Carrollton, 17 miles distant	54, plus 26 long term

General hospital facilities - Operating room, recovery room, emergency room, X-ray, pathology equipment, laboratory, OB section, blood bank, physical therapy, and inhalation therapy

Medical staff - 5 doctors, 10 registered nurses, 3 graduate licensed practical nurses

Nursing Homes

	<u>Nearest Location</u>	<u>Number</u>	<u>Beds</u>
Extended care homes	Carrollton, 17 miles from Warsaw	1	27
Personal care homes	Carrollton, 17 miles from Warsaw	1	45

Public Health

Facility - Gallatin County Health Department

Staff - Nurse, doctor, clerk

Budget 1973-74 - \$24,808

OTHER LOCAL FACILITIES

Communications

Telephone - The Cincinnati Bell, Inc., serves Warsaw, Sparta and
Glencoe
Services - Standard

Telegraph - No local service
Services - Phone to Carrollton

Postal - U. S. Post Office
Class - Warsaw, second; Sparta and Glencoe, third
Mail received - Warsaw, twice daily; Sparta and Glencoe, once
daily
Mail dispatched - Warsaw, twice daily; Sparta and Glencoe, once
daily

Newspapers - Gallatin County News
Weekly and circulation - 1,900
Other papers received from - Cincinnati, Ohio; Louisville and
Lexington, Kentucky

Radio -
Stations received from - Cincinnati, Ohio; Louisville, Lexington,
Covington, and Carrollton, Kentucky

Television -
Reception from - Cincinnati, Ohio; Louisville, Kentucky

Kentucky Educational Television - Owenton transmitter - Channel 52

Religious Institutions

Number of churches in Gallatin County - 17
Denominations - Baptist, Christian, Catholic, Methodist, Church of
Christ, Pentecostal

Nearest Synagogues - Cincinnati, Ohio
Congregations - 16 synagogues; Orthodox, reform, traditional
and conservative

Financial Institutions

<u>Banks</u>	<u>Statement as of December 31, 1972</u>	
	<u>Assets</u>	<u>Deposits</u>
<u>Warsaw</u>		
Farmers State Bank	\$4,355,471.00	\$3,845,381.00

<u>Sparta</u>	<u>Statement as of June 30, 1973</u>	
	<u>Assets</u>	<u>Deposits</u>
Sparta-Sanders State Bank	\$3,559,587.26	\$3,000,570.38

Hotels and Motels

Total number - 2

Units - 25

Clubs and Organizations

Warsaw

Business and Civic - Lions, Ministerial Association, PTA, Jaycees

Fraternal - American Legion, Masonic Lodge, VFW

Women's - Woman's Club, Homemakers, Eastern Star

Youth - Boy Scouts, FFA, FHA, 4-H, FTA, Beta Club

Other - Gallatin County Fish and Game Club, Northern Kentucky Coon Hunters

Glencoe

Fraternal - Masonic Lodge

Women's - Women's Auxiliary to the Fire Department

Youth - 4-H

Other - Glencoe Croquet Club

RECREATION

Local

	<u>Warsaw</u>	<u>Sparta</u>	<u>Glencoe</u>
Public Reacreation Facilities			
Playground -	1		
Tennis court -	1		
Baseball diamonds -	1	1	1
Other -	4 boat docks 4 boat ramps	Basketball court	Croquet and basketball court

Tourist Attractions

Regional United Powerboat Association, races each August
 Markland Dam
 Water Festival
 Ferry rides across the Ohio River

Area (Within 60 miles of Warsaw)

Big Bone Lick State Park
 General Butler State Resort Park
 Kincaid Lake State Park
 Blue Licks Battlefield State Park
 Fort Hill State Park
 Cincinnati, Ohio and Louisville, Kentucky, offer the full spectrum of
 sophisticated entertainment, cultural and sporting events.

AGRICULTURE - NATURAL RESOURCES - CLIMATE

Agriculture*

	<u>Gallatin County</u>	<u>Labor Market Area</u>
Total land area (acres)	63,744	690,496
Percent of area in farm land	77.1	80.8
Number of farms	373	4,157
Average size of farms (acres)	131.7	134.3
1969 value of all farm products	\$2,260,217	\$24,908,378
Value per farm	6,060	5,992
Total crop sales	1,603,427	14,652,668
Total livestock & livestock products	654,060	10,182,200
1970 agricultural production included:		
Burley tobacco (lbs.)	1,988,000	20,245,000
Corn (bu.)	52,000	633,000
Cattle and calves (number)	6,400	83,600
Hogs and pigs (number)**	1,400	24,400
Milk production, 1969 (lbs.)	8,960,000	99,640,000

Natural Resources

Principal mineral resources	Sand and gravel
Other mineral resources	Limestone
Acres of commercial forest land	19,500 (31 percent of land area)
Most abundant tree species	White oak, red oak, hickory, ash, red cedar, black locust, and hard maple

*U. S. Department of Commerce, Bureau of the Census, Census of Agriculture, 1969. U. S. Department of Agriculture and Kentucky Department of Agriculture, Kentucky Agricultural Statistics, 1971.

**Preliminary figures.

Climate*

Gallatin County

Temperature

Annual mean (30-year record)	53.4 degrees
Average annual 1972	52.3 degrees
Record highest, August, 1962 (11-year record)	102.0 degrees
Record lowest, January, 1963 (11-year record)	- 19.0 degrees
Normal heating degree days (30-year record)	5,265
(Heating degree day totals are the sums of negative departures of average daily tem- peratures from 65 degrees F.)	

Precipitation

Mean annual total (30-year record)	38.02 inches
Mean annual snow and sleet (25-year record)	23.90 inches
Total precipitation 1972	45.30 inches
Mean number days precipitation (.01 inch or more) (25-year record)	128
Average number days thunderstorms (25-year record)	43

Prevailing winds (16-year record)	South-southwest
-----------------------------------	-----------------

*U. S. Department of Commerce, Environmental Science Services
Administration, Climatological Data, 1972. Station of record:
Cincinnati, Ohio.

HISTORY

Gallatin County, the thirty-third county made in the state, dates from 1798. It was taken from Franklin and Shelby Counties. Several years after its establishment portions of Gallatin County were given up to help form three additional counties: Owen in 1819, Trimble in 1836, and Carroll in 1838. Gallatin borders on the Ohio River for several miles on its northwestern side. Since the Kentucky state line follows the northern or Indiana shore line of the river, there have been slight fluctuations in Gallatin County's size caused by sand bars filling in or by washing away.

The surface of Gallatin County is generally hilly, and is influenced by the escarpment which separates the higher ground from the Ohio River Flood Plain. The soil is usually productive, especially in the river and creek bottoms.

Gallatin County was named for Albert Gallatin, American statesman and financier who became a member of the United States Senate before he reached his fortieth birthday.

Warsaw, the county seat, is located on the Ohio River in a beautiful and highly productive valley. It was settled around 1800 and was called "The Ohio River Landing." Later, it was called Fredericksburg in honor of the most energetic and enterprising townsman, Adolph Frederick. In 1831, the name was changed again because another town had a similar name. Captain John Blair Summons suggested the name "Warsaw" after the book entitled, Thaddeus Warsaw.

Warsaw was once a prominent river port. Today it depends on its position as the county seat and a rural trading center for a livelihood.

Other towns in the county include Sparta, Glencoe, and Napoleon. Sparta was once famous for fine beverages, Glencoe prospered as a railroad town, and Napoleon, once prosperous to the degree of being incorporated by the state legislature in 1841, reached the peak of its importance a hundred years ago, then slowly declined.

Gallatin County reached its peak in population in 1820, with 7,075 people. The population declined to 4,003 by 1840, but was up again in 1850 to 5,137. In 1860 the population declined to 5,056 but then rose slightly in 1870 to 5,074. However it then continued to decrease until 1890 when the population was recorded at 4,611. By 1900 the population had increased slightly to 5,163. But since 1900 the population has continually declined until in 1960 it was 3,867. However, it increased in 1970 to 4,134.

In 1972, agriculture accounted for 300 jobs of the county's 1,140 total employment. Government provided for 220 jobs, trade and services 210 and manufacturing 35. Lumber and furniture account for most of the manufacturing employment of the county.

In the Gallatin County labor market area there was a total of 21,340 jobs in 1972. Of these, agriculture provided 3,170 jobs, government 2,410, trade and services 4,990, and manufacturing 4,890.