

1977

# Industrial Resources: Grant County - Williamstown, Dry Ridge & Crittenden

Kentucky Library Research Collections  
Western Kentucky University, [spcol@wku.edu](mailto:spcol@wku.edu)

Follow this and additional works at: [https://digitalcommons.wku.edu/grant\\_cty](https://digitalcommons.wku.edu/grant_cty)



Part of the [Business Administration, Management, and Operations Commons](#), [Growth and Development Commons](#), and the [Infrastructure Commons](#)

---

## Recommended Citation

Kentucky Library Research Collections, "Industrial Resources: Grant County - Williamstown, Dry Ridge & Crittenden" (1977). *Grant County*. Paper 9.  
[https://digitalcommons.wku.edu/grant\\_cty/9](https://digitalcommons.wku.edu/grant_cty/9)

This Report is brought to you for free and open access by TopSCHOLAR®. It has been accepted for inclusion in Grant County by an authorized administrator of TopSCHOLAR®. For more information, please contact [topscholar@wku.edu](mailto:topscholar@wku.edu).

1977

Grant County

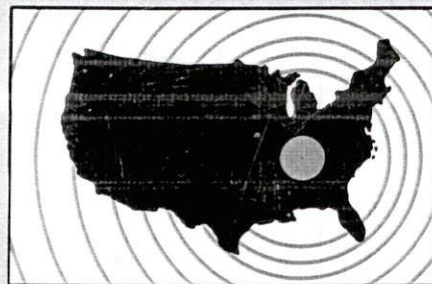
# ***INDUSTRIAL RESOURCES***

**WILLIAMSTOWN**

**DRY RIDGE**

**CRITTENDEN**

**Kentucky  
first**

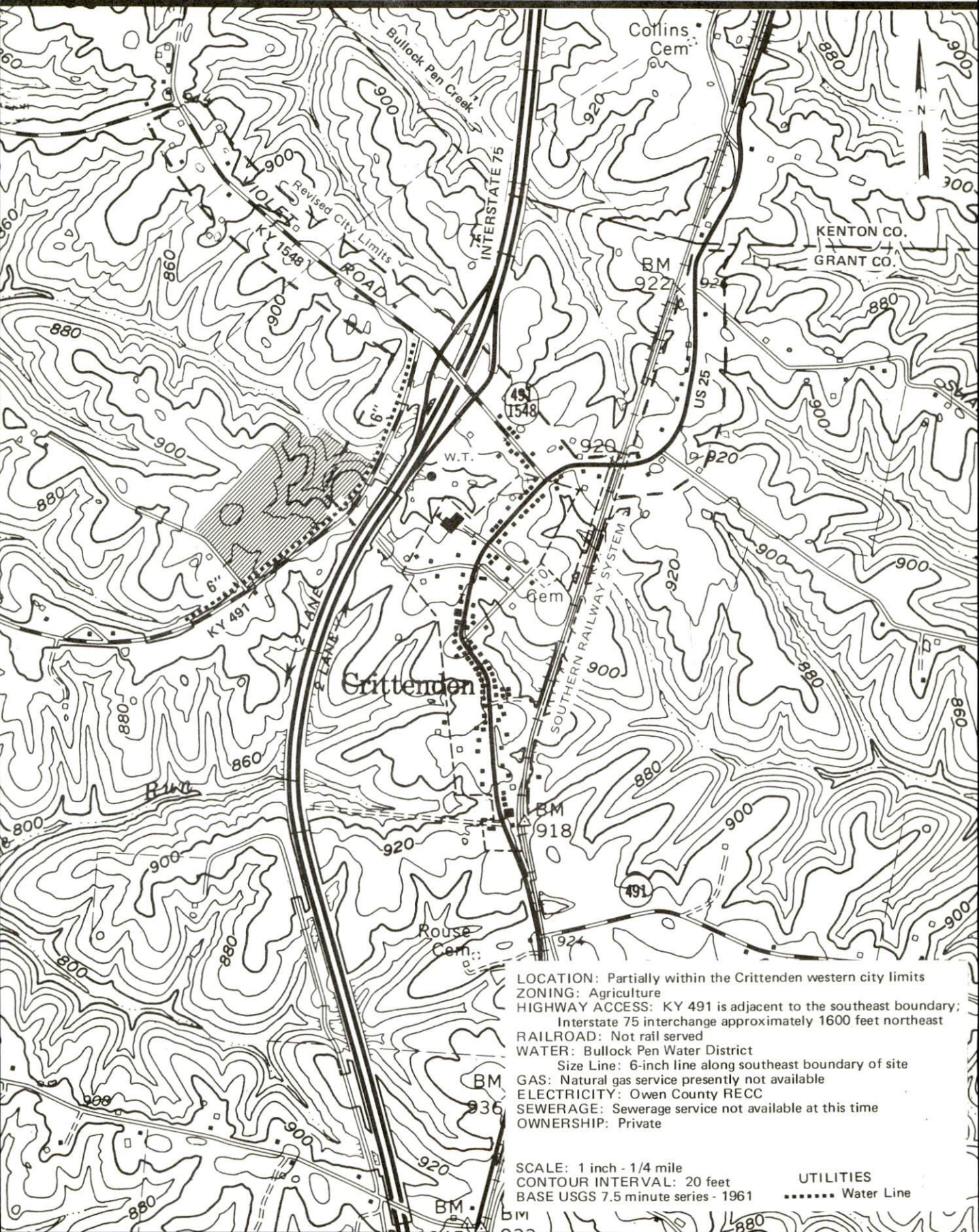


**DEPARTMENT OF COMMERCE**



# CRITTENDEN, KENTUCKY --- Site No. 177 -- 32 Acres

For more information contact Mr. William Stephens, Dixie Highway, Crittenden, Kentucky 41030, or the Industrial Development Division, Kentucky Department of Commerce, Capital Plaza Tower, Frankfort, Kentucky 40601.



LOCATION: Partially within the Crittenden western city limits  
 ZONING: Agriculture  
 HIGHWAY ACCESS: KY 491 is adjacent to the southeast boundary;  
 Interstate 75 interchange approximately 1600 feet northeast  
 RAILROAD: Not rail served  
 WATER: Bullock Pen Water District  
 Size Line: 6-inch line along southeast boundary of site  
 GAS: Natural gas service presently not available  
 ELECTRICITY: Owen County RECC  
 SEWERAGE: Sewerage service not available at this time  
 OWNERSHIP: Private

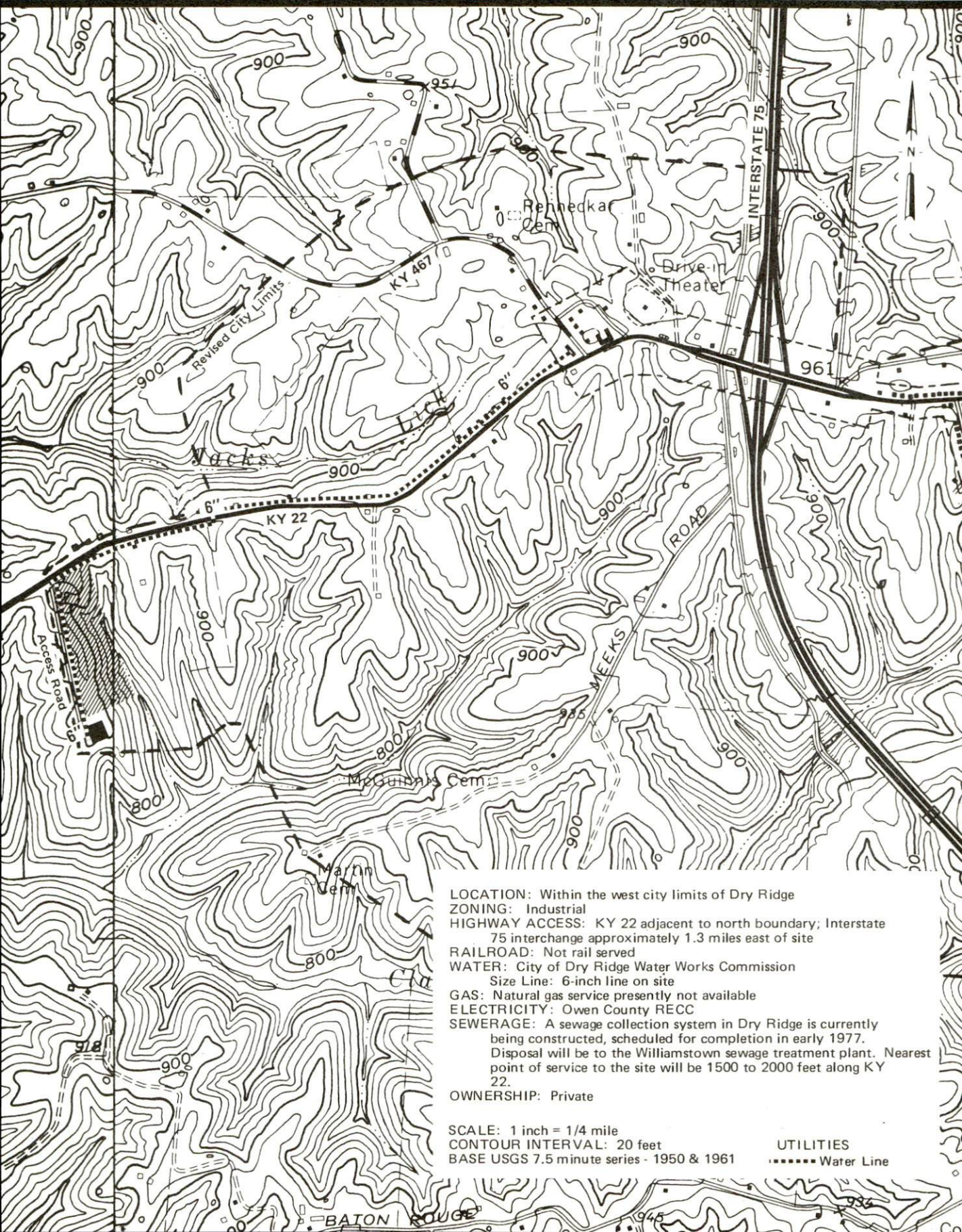
SCALE: 1 inch - 1/4 mile  
 CONTOUR INTERVAL: 20 feet  
 BASE USGS 7.5 minute series - 1961

UTILITIES  
 ..... Water Line



# DRY RIDGE, KENTUCKY --- Site No. 177 -- 17 Acres

For more information contact Mr. W. A. Stewart, c.o. Stewart Truck Lines, Dry Ridge, Kentucky 41035, or the Industrial Development Division, Kentucky Department of Commerce, Capital Plaza Tower, Frankfort, Kentucky 40601.



LOCATION: Within the west city limits of Dry Ridge  
ZONING: Industrial  
HIGHWAY ACCESS: KY 22 adjacent to north boundary; Interstate 75 interchange approximately 1.3 miles east of site  
RAILROAD: Not rail served  
WATER: City of Dry Ridge Water Works Commission  
Size Line: 6-inch line on site  
GAS: Natural gas service presently not available  
ELECTRICITY: Owen County RECC  
SEWERAGE: A sewage collection system in Dry Ridge is currently being constructed, scheduled for completion in early 1977. Disposal will be to the Williamstown sewage treatment plant. Nearest point of service to the site will be 1500 to 2000 feet along KY 22.  
OWNERSHIP: Private

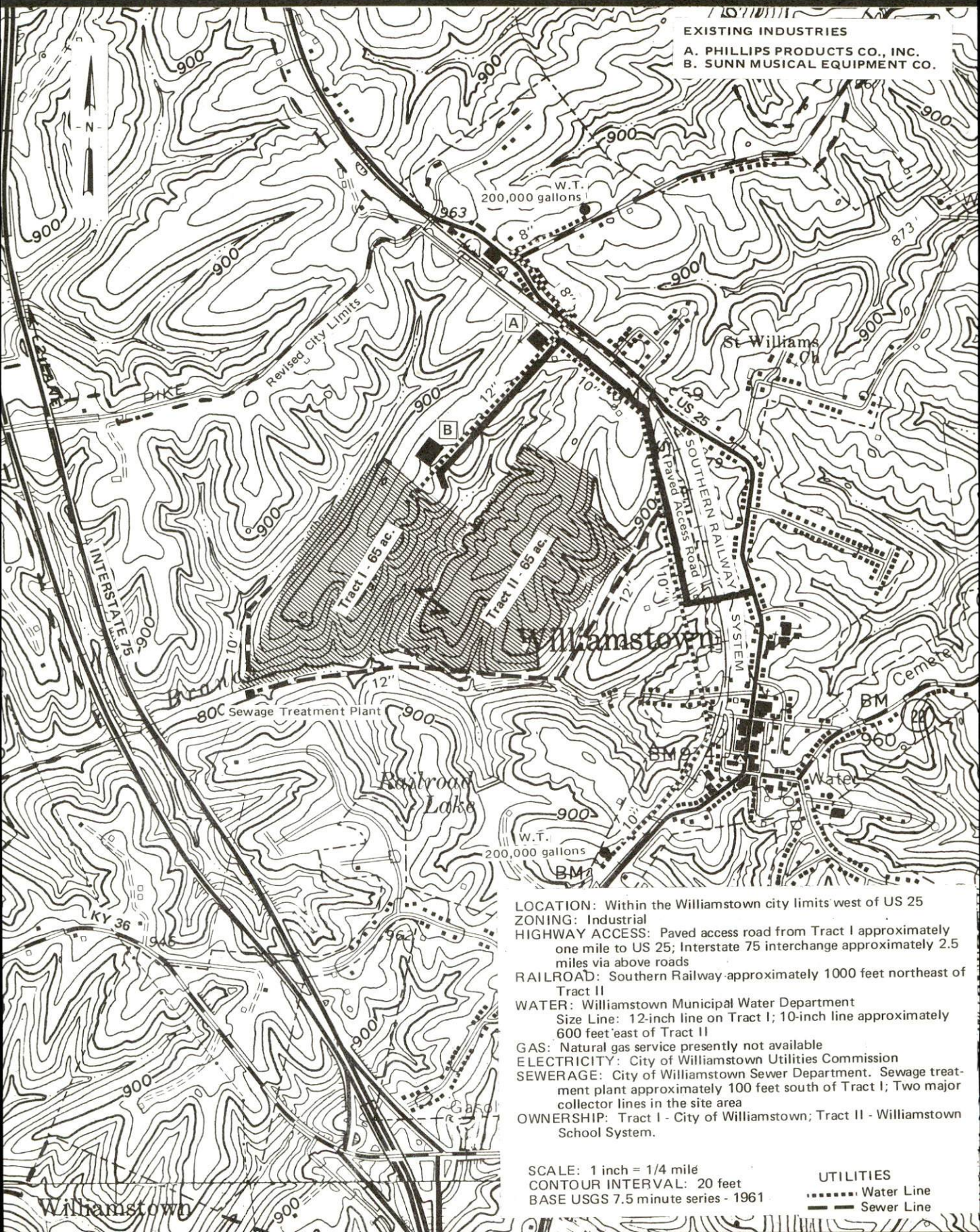
SCALE: 1 inch = 1/4 mile  
CONTOUR INTERVAL: 20 feet  
BASE USGS 7.5 minute series - 1950 & 1961

UTILITIES  
..... Water Line



# WILLIAMSTOWN, KENTUCKY --- Site No. 177 -- 130 Acres

For more information contact Mr. George Powers, 146 Main Street, Williamstown, Kentucky 41097, or the Industrial Development Division, Kentucky Department of Commerce, Capital Plaza Tower, Frankfort, Kentucky 40601



## EXISTING INDUSTRIES

- A. PHILLIPS PRODUCTS CO., INC.
- B. SUNN MUSICAL EQUIPMENT CO.

**LOCATION:** Within the Williamstown city limits west of US 25

**ZONING:** Industrial

**HIGHWAY ACCESS:** Paved access road from Tract I approximately one mile to US 25; Interstate 75 interchange approximately 2.5 miles via above roads

**RAILROAD:** Southern Railway approximately 1000 feet northeast of Tract II

**WATER:** Williamstown Municipal Water Department  
Size Line: 12-inch line on Tract I; 10-inch line approximately 600 feet east of Tract II

**GAS:** Natural gas service presently not available

**ELECTRICITY:** City of Williamstown Utilities Commission

**SEWERAGE:** City of Williamstown Sewer Department. Sewage treatment plant approximately 100 feet south of Tract I; Two major collector lines in the site area

**OWNERSHIP:** Tract I - City of Williamstown; Tract II - Williamstown School System.

SCALE: 1 inch = 1/4 mile

CONTOUR INTERVAL: 20 feet

BASE USGS 7.5 minute series - 1961

## UTILITIES

- Water Line
- Sewer Line



INDUSTRIAL RESOURCES

WILLIAMSTOWN, DRY RIDGE AND CRITTENDEN,  
KENTUCKY - A RESOURCE PROFILE

Prepared by  
The Kentucky Department of Commerce  
Division of Research and Planning  
in cooperation with  
The Grant County Chamber of Commerce

1977



Production supervisor: Patsy Wallace; research: David Wellman;  
clerical: Mildred Keefer; graphics: N. C. Montague, Frank Ferrante,  
Tony Cecconi; cartography: Site Development Section. Cost of printing  
paid from state funds.



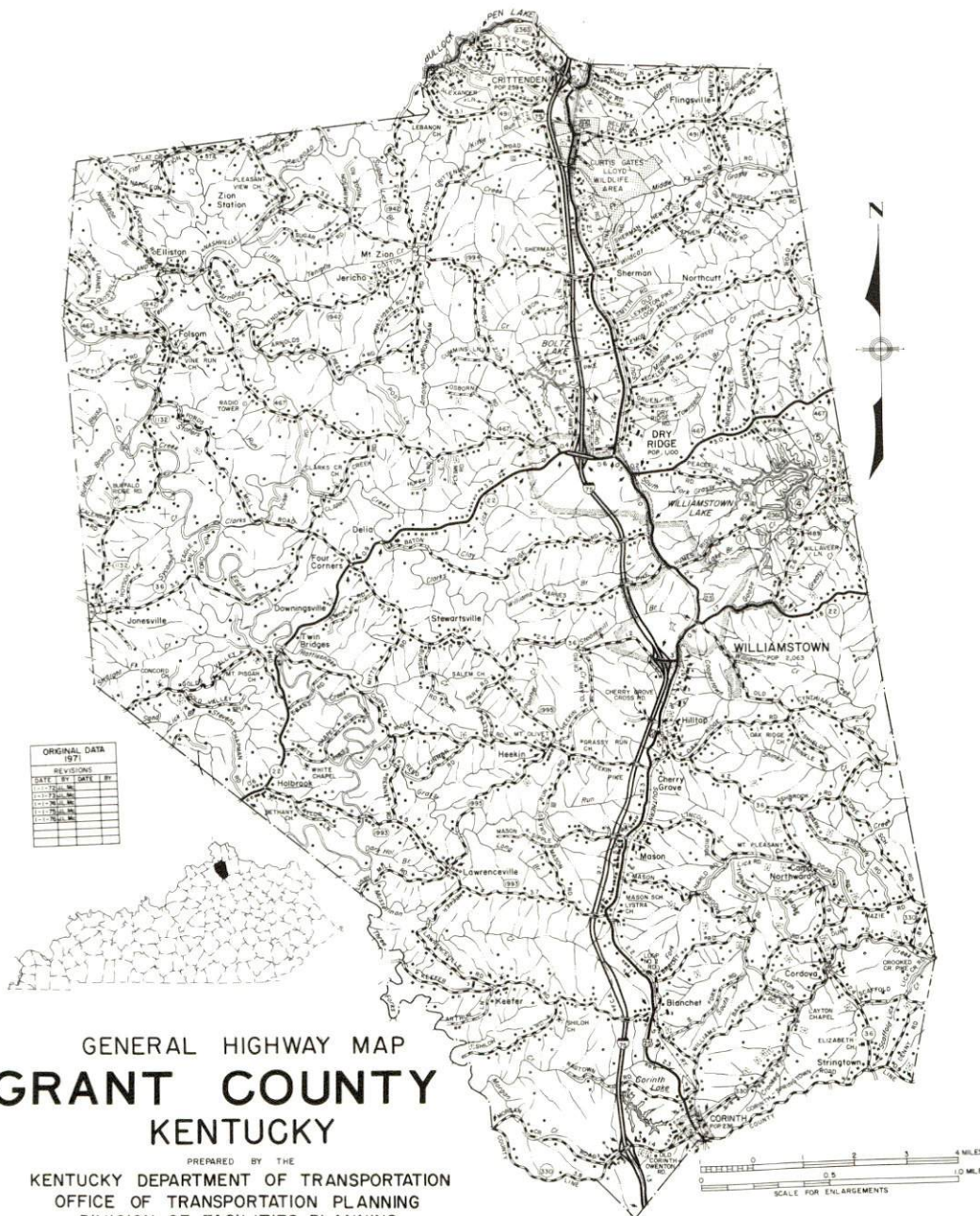
# TABLE OF CONTENTS

<u>Chapter</u>	<u>Page</u>
INDUSTRIAL SITES . . . . .	i
WILLIAMSTOWN, DRY RIDGE AND CRITTENDEN, KENTUCKY - A RESOURCE PROFILE. . . . .	1
THE LABOR MARKET AREA. . . . .	3
Population. . . . .	3
Labor Force Characteristics of Residents, 1975. . . . .	3
Nonagricultural Employment by Industry, by Place of Work, 1975 . . . . .	4
Williamstown and Dry Ridge Manufacturing Firms, Their Products and Employment . . . . .	5
Labor Organizations . . . . .	5
Estimated Male Labor Supply . . . . .	8
Estimated Female Labor Supply . . . . .	8
Average Weekly Wages by Industry, by Place of Work, 1975 . . . . .	9
Per Capita Personal Income. . . . .	11
TRANSPORTATION . . . . .	12
Rail. . . . .	12
Highways . . . . .	12
Truck Service . . . . .	13
Air . . . . .	14
Bus . . . . .	14
Taxi . . . . .	14
Rental Services . . . . .	14
POWER AND FUEL . . . . .	15
Electricity. . . . .	15
Natural Gas . . . . .	16
Other Fuels . . . . .	17
WATER AND SEWERAGE . . . . .	18
Water. . . . .	18
Sewerage . . . . .	21



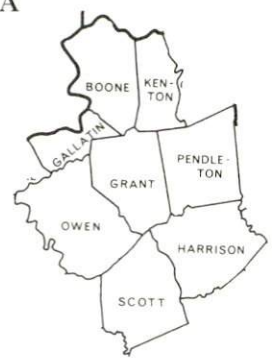
<u>Chapter</u>	<u>Page</u>
CLIMATE . . . . .	22
LOCAL GOVERNMENT . . . . .	23
City . . . . .	23
County . . . . .	23
Assessed Value of Property, 1975 . . . . .	25
Property Taxes . . . . .	25
Local Property Tax Rate Per \$100 of Assessed Valuation, 1976 . . . . .	26
Utilities Gross Receipts Tax for Schools . . . . .	26
Planning and Zoning . . . . .	26
Safety . . . . .	27
Police . . . . .	27
Fire . . . . .	27
Solid Waste . . . . .	27
EDUCATION . . . . .	29
Public Schools . . . . .	29
Area Colleges and Universities . . . . .	30
Vocational Schools . . . . .	31
HEALTH . . . . .	33
Local Medical Personnel . . . . .	33
Hospitals . . . . .	33
Ambulance Service . . . . .	33
Nursing Homes . . . . .	33
Public Health . . . . .	33
OTHER LOCAL FACILITIES . . . . .	34
Communications . . . . .	34
Library Services . . . . .	35
Religious Institutions . . . . .	36
Financial Institutions . . . . .	36
Hotels and Motels . . . . .	37
Clubs and Organizations . . . . .	37
RECREATION . . . . .	39
COMMUNITY IMPROVEMENTS . . . . .	41
HISTORY . . . . .	45



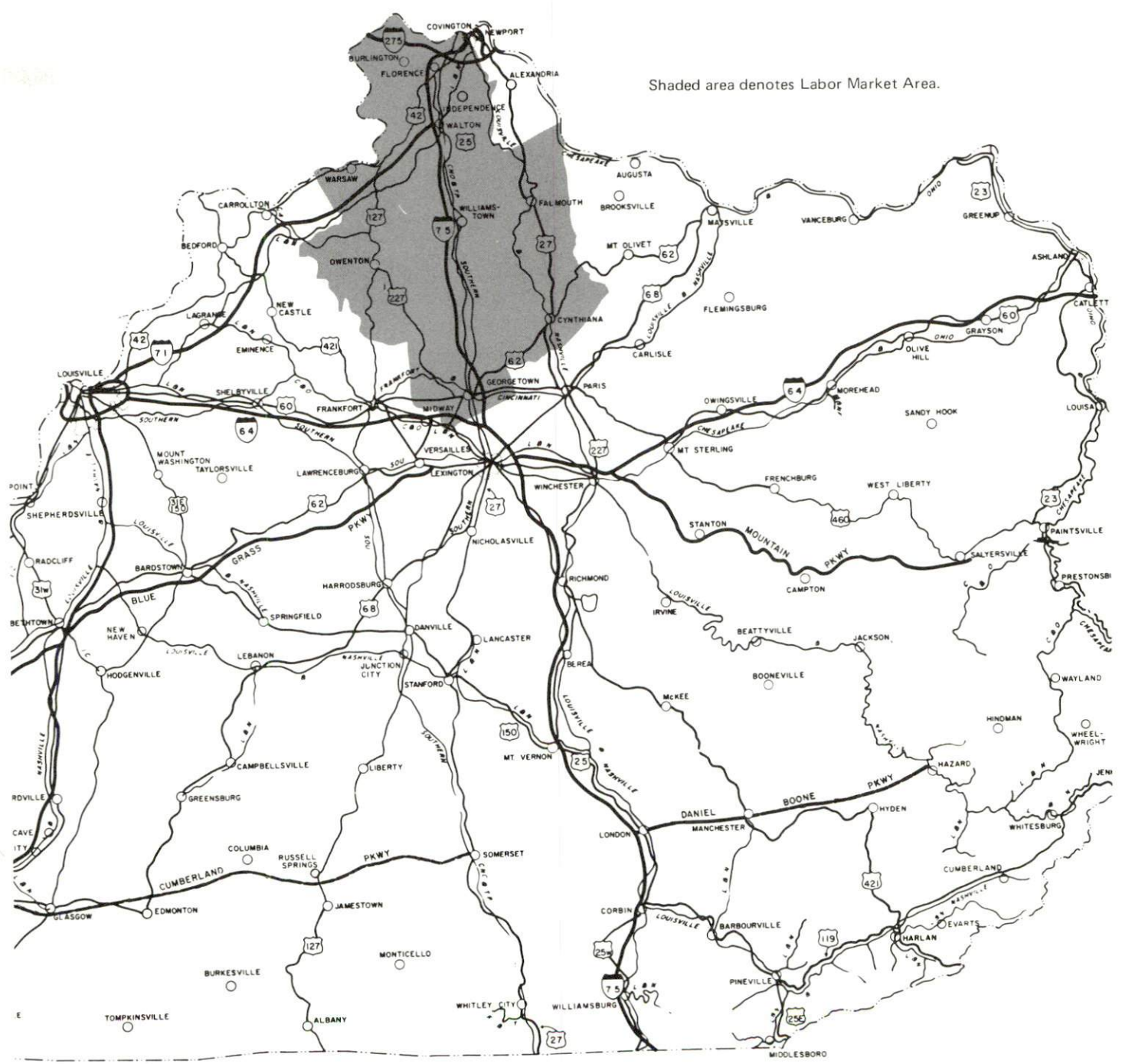




# WILLIAMSTOWN, DRY RIDGE & CRITTENDEN LABOR MARKET AREA



Shaded area denotes Labor Market Area.





## WILLIAMSTOWN, DRY RIDGE AND CRITTENDEN, KENTUCKY - A RESOURCE PROFILE

Williamstown, the county seat and largest city in Grant County, is located in the east central portion of the county. It is situated approximately half-way between the industrial centers of Cincinnati, Ohio, and Lexington, Kentucky. Williamstown is 98 miles northeast of Louisville, Kentucky, and 41 miles south of Cincinnati, Ohio. In 1973, Williamstown's population was estimated to be 2,327.

Dry Ridge, 4 miles north of Williamstown, had an estimated population of 1,220 in 1973. In the same year Crittenden, 7 miles north of Dry Ridge, had an estimated population of 414.

Grant County, covering a land area of 249 square miles, is located in the north central portion of Kentucky in the outer Bluegrass physiographic region. The population of Grant County was estimated to be 11,700 in 1975.

### The Economic Framework

The total number of Grant county residents employed in 1975 averaged 4,000, with nonagricultural jobs accounting for 3,510 workers. Manufacturing employers in the county reported 100 workers; construction firms 50; transportation, communications, and public utilities 110; wholesale and retail trade 530; finance, insurance, and real estate 90; and employees in the service industries 190. Major industrial products are polyethylene products and amplifier and speaker equipment.

Total unemployment in Morgan County averaged 5 percent of the labor force in 1975.

Per capita personal income in the county in 1974 was \$4,054, an increase of 39.8 percent since 1970.

The Williamstown, Dry Ridge and Crittenden labor market area includes Grant and the seven adjoining counties. The total number of residents of the labor market area employed in 1975 averaged 93,240, with nonagricultural jobs accounting for 87,740 workers. Manufacturing employers in the labor market area reported 13,040 workers; mining and quarrying 40; construction firms 2,210; transportation, communications, and public utilities 2,500; wholesale and retail trade 13,950; finance, insurance, and real estate 1,890; and employees in the service industries 9,560.

## Resources for Growth

1. Labor Supply - There is a current labor supply of 6,040 men and 7,140 women available for industrial jobs in the labor market area. In addition, 12,150 young men and 11,470 young women in the area will become 18 years of age before 1982 and potentially available for work.

2. Transportation - Transportation facilities in and around Grant County are excellent. The Southern Railway System offers a variety of services at Williamstown, Dry Ridge and Crittenden, and piggyback facilities are available at Cincinnati, 41 miles north of Williamstown. Interchanges of Interstate 75 are located at each of the cities, providing easy access to or from the industrial centers of Cincinnati and Lexington. Three truck lines serve the cities and a United Parcel Service shipping center is located in Lexington, 45 miles south of Williamstown. Chartered air freight service is available at Cynthiana, 28 miles south of Williamstown, and the Greater Cincinnati Airport is less than 40 miles north of Williamstown.

3. Utilities and Fuel - Natural gas service and electric power are provided in Dry Ridge and Crittenden by the Union Light, Heat and Power Company. Williamstown does not have natural gas service. Electricity is provided in Williamstown by the Williamstown Utility Department, whose source of supply is the Union Light, Heat and Power Company. The Owen County RECC and the Harrison County RECC serve portions of the county. There are five distributors of propane and eight distributors of distillate fuel oil in the Williamstown-Dry Ridge-Crittenden area.

4. Education - Primary and secondary education in Williamstown is provided by the Williamstown Independent School System, and in Dry Ridge and Crittenden by the Grant County School System. Located within 50 miles of Williamstown are five universities, six senior colleges, one junior college, and one technical institute. Vocational education is available at the Harrison County Area Vocational Education Center at Cynthiana, 28 miles southeast of Williamstown. The Education Center offers seven courses in different fields of study. The Northern Kentucky State Vocational-Technical School at Covington, 40 miles north of Williamstown, offers instruction in twenty different areas of study.



# THE LABOR MARKET AREA

## POPULATION

Area	1975*	1970	Percent Nonwhite
			1970
Williamstown	2,327**	2,063	0.7
Dry Ridge	1,220**	1,100	1.3
Crittenden	414**	359	N. A.
Labor Market Area	235,500	225,910	N. A.
Grant County	11,700	9,999	0.7
Boone County	37,100	32,812	0.6
Gallatin County	4,400	4,134	2.6
Harrison County	14,600	14,158	3.7
Kenton County	130,500	129,440	3.0
Owen County	7,900	7,470	3.6
Pendleton County	10,400	9,949	0.7
Scott County	18,900	17,948	9.4

\*Provisional Estimates.

\*\*1973 Population Estimates.

Sources: U. S. Department of Commerce, Bureau of the Census, Census of Population, 1970. U. S. Department of Commerce, Bureau of the Census, Current Population Reports, Series P-25, No. 562, June 1975; Series P-26, No. 75-17, May 1976.

## LABOR FORCE CHARACTERISTICS OF RESIDENTS, 1975

	Grant County	Labor Market Area
Civilian Labor Force	4,212	100,227
Employment	4,000	93,239
Agricultural	488	5,495
Nonagricultural	3,512	87,744
Unemployment	212	6,988
Rate of Unemployment (%)	5.0	7.0

Source: Kentucky Department for Human Resources, Kentucky Labor Force Estimates, Annual Averages, 1975.

NONAGRICULTURAL EMPLOYMENT BY INDUSTRY,  
BY PLACE OF WORK, 1975

	<u>Grant County</u>	<u>Labor Market Area</u>
All Industries	1,071	43,451
Mining & Quarrying	0	38
Contract Construction	52	2,211
Manufacturing	96	13,043
Food & Kindred Products	4	561
Apparel, Textiles, Leather	0	1,139
Lumber & Furniture	0	1,107
Printing & Publishing, Paper	5	1,492
Chemicals, Petroleum, Coal &		
Rubber	47	665
Stone, Clay & Glass	6	235
Primary Metals	0	477
Machinery, Metal Products &		
Equipment	35	6,434
Other Manufacturing	0	932
Transportation, Communications		
& Public Utilities	107	2,497
Wholesale & Retail Trade	533	13,948
Finance, Insurance & Real Estate	90	1,893
Services	194	9,564
Other	*	135

Note: Excludes domestic workers, railway workers; certain nonprofit corporations; majority of federal, state, and local government workers; and self employed workers. Labor market area totals for some employment categories exclude employment that was not disclosed for individual counties. Manufacturing detail may not add to totals because of rounding of base data.

\*Not disclosed.

Source: Kentucky Department for Human Resources, Average Monthly Workers Covered by Kentucky Unemployment Insurance Law, 1975.



WILLIAMSTOWN AND DRY RIDGE MANUFACTURING FIRMS,  
THEIR PRODUCTS AND EMPLOYMENT

<u>Firm</u> (Establishment date)	<u>Product</u>	<u>Employment</u>			<u>Organized</u>
		<u>Total</u>	<u>Male</u>	<u>Female</u>	
<u>Williamstown</u>					
Grant County News (1906)	Newspaper	9	5	4	
Phillips Products Company, Inc. (1973)	Polyethylene gas pipe and tubing, egg flats, poly- ethylene electrical conduit	57	52	5	
Sunn Musical Equipment Company (1973)	Amplifier and speaker equipment	35	18	17	
<u>Dry Ridge</u>					
Grant County Concrete Company, Inc. (1960)	Ready mixed concrete	6	6	0	*
Kassco (1972)	Offset and litho- graphic printing, catalogs, brochures, business forms	4	2	2	
S.S.P. Construction Equipment, Inc. (1976)	Crane blocks, soil compactors, vibrators	4	3	1	

\*See Labor Organizations below.

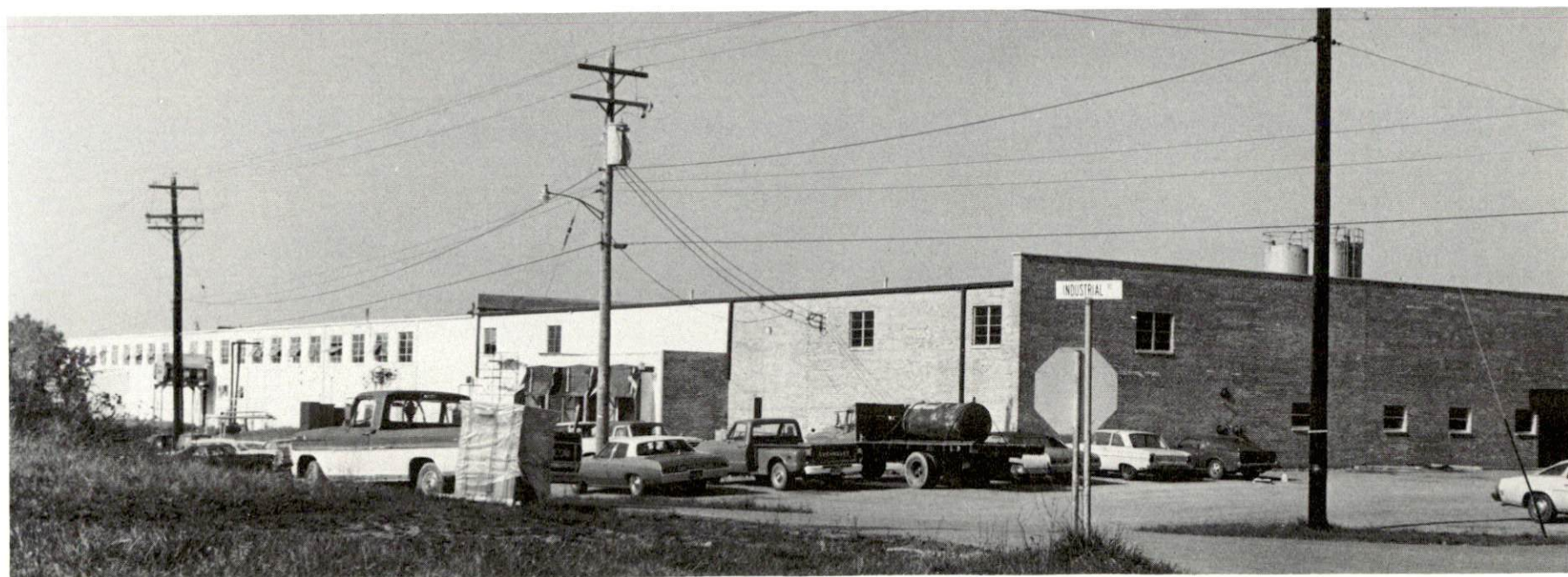
Source: Kentucky Department of Commerce, Division of Research and Planning.

LABOR ORGANIZATIONS

<u>Union</u>	<u>Representing manufacturing workers at:</u>
Teamsters Union Local 89	Grant County Concrete Company, Inc.



SUNN MUSICAL EQUIPMENT COMPANY



PHILLIPS PRODUCTS COMPANY, INC.





ESTIMATED MALE LABOR SUPPLY  
WILLIAMSTOWN, DRY RIDGE AND CRITTENDEN LABOR MARKET AREA

Area	Current			Future	
	Total	Not in Labor Force	Unemployed	Under-employed	Reaching 18 yrs. of age before 1982
Labor Market					
Area	6,040	60	2,500	3,480	12,149
Grant	250	0	80	170	470
Boone	850	0	310	540	1,984
Gallatin	140	60	30	50	205
Harrison	310	0	120	190	695
Kenton	3,460	0	1,670	1,790	6,964
Owen	240	0	70	170	334
Pendleton	230	0	60	170	582
Scott	560	0	160	400	915

Sources: Kentucky Department for Human Resources, Kentucky Labor Supply Estimates by County, 1975. Kentucky Department of Commerce, Future Labor Supply before 1982.

ESTIMATED FEMALE LABOR SUPPLY  
WILLIAMSTOWN, DRY RIDGE AND CRITTENDEN LABOR MARKET AREA

Area	Current			Future	
	Total	Not in Labor Force	Unemployed	Under-employed	Reaching 18 yrs. of age before 1982
Labor Market					
Area	7,140	780	1,750	4,610	11,470
Grant	240	0	50	190	463
Boone	940	0	220	720	1,886
Gallatin	380	250	20	110	192
Harrison	340	0	50	290	645
Kenton	3,720	0	1,200	2,520	6,655
Owen	370	200	50	120	321
Pendleton	540	330	50	160	477
Scott	610	0	110	500	831

Sources: Kentucky Department for Human Resources, Kentucky Labor Supply Estimates by County, 1975. Kentucky Department of Commerce, Future Labor Supply before 1982.



AVERAGE WEEKLY WAGES BY INDUSTRY,  
BY PLACE OF WORK, 1975

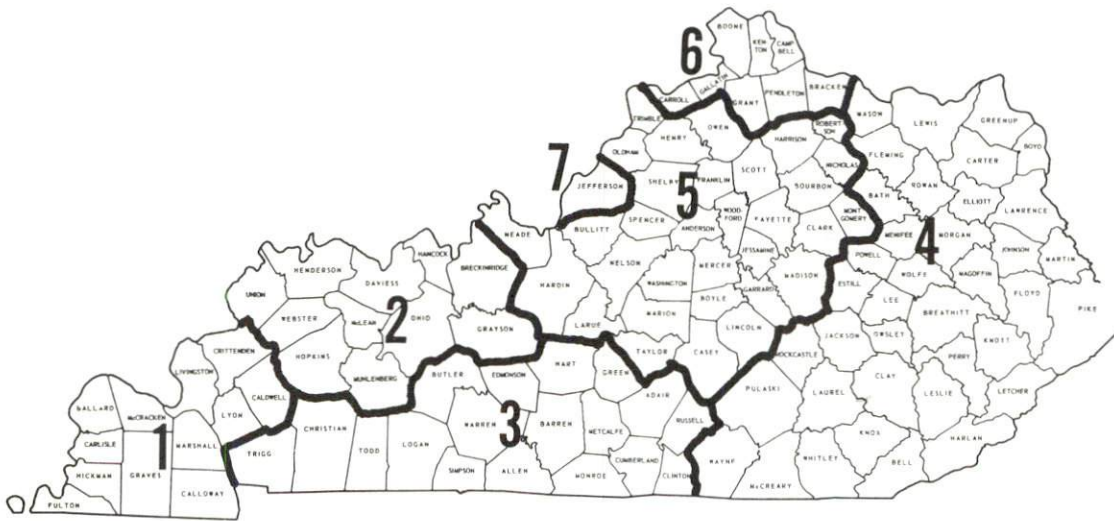
	<u>Grant County</u>	<u>Boone County</u>	<u>Gallatin County</u>	<u>Harrison County</u>
All Industries	\$124.49	\$167.58	\$107.42	\$145.43
Mining & Quarrying	0	*	*	*
Contract Construction	123.56	179.34	85.68	140.16
Manufacturing	160.42	201.50	102.86	173.98
Transportation, Com- munications & Public Utilities	263.77	265.16	181.61	177.17
Wholesale & Retail Trade	105.12	115.43	84.61	106.37
Finance, Insurance & Real Estate	131.53	140.76	94.08	122.21
Services	78.92	108.53	89.12	102.99
Other	*	197.28	0	151.57
	<u>Kenton County</u>	<u>Owen County</u>	<u>Pendleton County</u>	<u>Scott County</u>
All Industries	\$154.86	\$120.60	\$134.80	\$142.60
Mining & Quarrying	255.25	0	*	*
Contract Construction	227.39	116.97	230.68	147.80
Manufacturing	193.47	101.02	145.60	167.39
Transportation, Com- munications & Public Utilities	222.48	208.40	143.46	169.50
Wholesale & Retail Trade	132.41	107.52	95.49	108.84
Finance, Insurance & Real Estate	161.36	134.28	114.39	125.76
Services	131.56	139.77	79.09	107.79
Other	143.61	0	*	*

Note: Excludes domestic workers, railway workers; certain nonprofit corporations; majority of federal, state, and local government workers; and self employed workers.

\*Not disclosed.

Source: Kentucky Department for Human Resources, Average Weekly Wages of Workers Covered By Unemployment Insurance, 1975.

Associated Industries of Kentucky, a voluntary organization of Kentucky businesses, regularly collects occupational wage rates and fringe benefits data from participating member firms. Data is compiled for over 127 clearly defined office, production, and service occupations. Tabulations are published for seven regions of Kentucky, as shown on the map below. It should be noted that the data may be weighted by the preponderance of firms in the larger cities and may be somewhat higher than the rates paid in the smaller communities. Data from these tabulations are available, upon request, from the Kentucky Department of Commerce, Frankfort, Kentucky 40601.



Associated Industries of Kentucky Area Wage Surveys



PER CAPITA PERSONAL INCOME

<u>Area</u>	<u>1974</u>	<u>1970</u>	<u>Percent Change</u>
Grant County	\$4,054	\$2,899	39.8
Labor Market Area			
Range	\$3,763 - 5,118	\$2,420 - 3,661	N.A.
Kentucky	4,442	3,112	42.7
U.S.	5,448	3,966	37.4

Sources: U. S. Department of Commerce, Bureau of Economic Analysis, Survey of Current Business, August 1975. U.S. Department of Commerce, Bureau of Economic Analysis, March 1976,

## TRANSPORTATION

### Rail

Line serving Williamstown, Dry Ridge and Crittenden - Southern Railway System

Services - One freight stop daily - alternating north and south; 24 through freights daily; switching facilities; siding space for 50 cars at Williamstown and 25 cars at Dry Ridge; teamtrack for 2 cars at Williamstown, 6 cars at Dry Ridge, and 2 cars at Crittenden. The nearest piggyback facilities are located in Cincinnati.

For details on routing, schedules, rates, and services, contact:

District Sales Manager\*  
Southern Railway System  
701 South Broadway  
Lexington, Kentucky 40508  
(606) 252-2242

and/or

District Sales Manager\*\*  
Southern Railway System  
307 East 4th Street  
Cincinnati, Ohio 45202  
(513) 621-5540

### Highways

Interchanges of Interstate 75, the major highway between Lexington and Cincinnati, are located at Williamstown, Dry Ridge, and Crittenden. The three cities are also connected by U.S. 25, another major route between Lexington and Cincinnati. Both of these routes have an 80,000 pound gross load limit.

---

\*Williamstown area.

\*\*Dry Ridge and Crittenden Area.



## Truck Service

<u>Company</u>	<u>Home Office</u>
B & R Truck Lines, Inc.	310 North Main Street Williamstown, Kentucky 41097
Interstate Motor Freight System	134 Grandville Avenue S. W. Grand Rapids, Michigan 49502
Lee Way Motor Freight, Inc.	3000 West Reno P. O. Box 82488 Oklahoma City, Oklahoma 73108
McLean Trucking Company	P. O. Box 213 Winston-Salem, North Carolina 27102
Overhite Transportation Company	1100 Semmes Avenue P. O. Box 1216 Richmond, Virginia 23209
Stewart Truck Line*	South Main Street P. O. Box 109 Dry Ridge, Kentucky 41035

<u>Other Freight Services</u>	<u>Nearest Shipping Center</u>
United Parcel Service	Lexington, 45 miles away

## HIGHWAY MILES AND TRUCK TRANSIT TIME IN DAYS FROM DRY RIDGE, KENTUCKY, TO SELECTED MARKET CENTERS

City	Highway Miles	Delivery Time <sup>1/</sup> TL	City	Highway Miles	Delivery Time <sup>1/</sup> TL
Atlanta, Ga.	407	2	Los Angeles, Calif.	2,206	7
Birmingham, Ala.	443	2	Louisville, Ky.	98	1
Chicago, Ill.	327	2	Nashville, Tenn.	255	2
Cincinnati, Ohio	41	1	New Orleans, La.	772	4
Cleveland, Ohio	284	1	New York, N. Y.	687	4
Detroit, Mich.	299	2	Pittsburgh, Pa.	327	3
Knoxville, Tenn.	220	2	St. Louis, Mo.	361	2

<sup>1/</sup>Delivery time excludes the day of pickup.

Source: Delivery Time Only - Overnite Transportation Company, P. O.  
Box 1216, Richmond, Virginia 23209

\*Local terminal.

## Air

	<u>Nearest Local</u>	<u>Nearest Commercial</u>
	Cynthiana-Harrison County Airport	Greater Cincinnati Airport
Location:	Cynthiana, 28 miles south of Williamstown	Northern Boone County, 37 miles north of Williamstown
Runways:	1 paved	3 paved
Length:	3,200 feet	5,500 feet, 7,800 feet, 9,500 feet
Traffic		
Control:	Wind sock and lighted wind tee	Tower, guards, ground control, clearance delivery, approach control, departure control, Automatic Terminal Information Service
Lighting:	Runway lights - sundown to sunrise	Beacon, VASI, MALS-RAIL, ALS-SFL, HIRL, Red T-Bar, CL and TDZ
Services:	80-100 octane, hangar and tie down, taxi, U-Drive-It, A & E repairs, flight instruction, A & I service	TWA, Delta, American, Piedmont, Eastern, Air Kentucky, Allegheny, and North Central Airlines; fuel 100, Jet A50, 650 turbine; storage, major A & E repairs; hotel; restaurant, airport limousine, taxi, freight handling
Air Freight Service:		Air freight terminal regularly serviced by freight carrying airlines

Bus - Southern Greyhound Bus Lines serves Williamstown, Dry Ridge, and Crittenden.

Taxi - One taxi company serves Williamstown, Dry Ridge, and Crittenden.

Rental Services - U-Haul Service is available in Williamstown, Dry Ridge, and Crittenden.



## POWER AND FUEL

### Electricity

Company serving Williamstown - Williamstown Utility Department

Source of power - Union Light, Heat and Power Company

Total generating capacity - 3,308,390 KW

For industrial rates contact:

Williamstown Utility Department  
114 Main Street  
Williamstown, Kentucky 41097  
(606) 824-3352

Company serving Dry Ridge and Crittenden - Union Light, Heat and Power Company

Source of power - Cincinnati Gas and Electric Company

Total generating capacity - 3,308,390 KW

For industrial rates contact:

Union Light, Heat & Power Company, Covington,  
Kentucky, a subsidiary of the  
Cincinnati Gas and Electric Company  
P. O. Box 960  
Cincinnati, Ohio 45201  
(513) 632-2595

Company serving Grant County - Owen County RECC and Harrison RECC  
Source of power - East Kentucky Power Cooperative  
Total generating capacity - 496,000 KW  
For industrial rates contact:

Industrial Development Division  
East Kentucky Power Cooperative  
P. O. Box 707  
Winchester, Kentucky 40391  
(606) 744-4812

and/or

Owen County RECC  
Owenton, Kentucky 40359  
(502) 484-3471

and/or

Harrison RECC  
P. O. Box 312  
Cynthiana, Kentucky 41031  
(606) 234-3131

#### Natural Gas

Williamstown - Natural gas service is not presently available.

Company serving Dry Ridge and Crittenden - - Union Light, Heat  
and Power Company\*  
Source of supply - Columbia Gas Transmission Corporation  
Size of transmission mains - 20 and 24 inches  
Distribution mains - 2 to 24 inches  
Distribution pressure - Up to 60 psi  
Btu content - 1,010 per cubic foot  
Specific gravity - .60  
For rates and supplies contact:

Union Light, Heat & Power Company, Covington,  
Kentucky, a subsidiary of the  
Cincinnati Gas and Electric Company  
P. O. Box 960  
Cincinnati, Ohio 45201  
(513) 632-2595

---

\*Gas service is not presently available for new or increased users due  
to the national gas shortage.



## Other Fuels

### Propane

American Oil Company, Nicholson Road, Walton, Kentucky 41094

Crouch Gas Service, Inc., Howard Street, Glencoe, Kentucky 41046

Hulett Hardware (representing Rural Doxol, Ludlow), 120 North Main Street, Williamstown, Kentucky 41097

Pyrofax Gas Corporation, Highway 27, Falmouth, Kentucky 41040

Suburban Propane, 1417 North Main Street, Williamstown, Kentucky 41097

### Fuel oils

Distillate fuel oil -

Adams Royce (Texaco), Dixie Highway, Mason, Kentucky 41054

Ashland Oil, Inc., 206 Park, Falmouth, Kentucky 41040

B. L. Ballard, Taft Highway, Dry Ridge, Kentucky 41035

Bi County Farm Bureau Co-Op, Mason, Kentucky 41054

Carlisle Oil Company, Inc., (Sunoco), Nicholson Road, Walton, Kentucky 41094

Dixie Oil Company, 217 Montjoy, Falmouth, Kentucky 41040

Grant County Oil Company, 200 North Main, Williamstown, Kentucky 41097

Gulf Oil Products, 431 South Main Street, Williamstown, Kentucky 41097

Residual fuel oil - Arrangements must be made with the refinery.

Low sulphur content coal - Available in eastern Kentucky.

## WATER AND SEWERAGE

### Water

Company serving Williamstown - Williamstown Water Works\*  
114 Main Street  
Williamstown, Kentucky 41097  
(606) 824-4210

Source - Lake Williamstown  
Treatment plant capacity - 500,000 gallons per day  
Average daily consumption - 380,000 gallons  
Peak daily consumption - 450,000 gallons  
Type treatment - Coagulated, settled, filtered, chlorinated  
Storage capacity - 400,000 gallons  
Size lines - 6, 8, 10 and 12 inches  
Average pressure - 63 psi  
Average temperature - 65 to 68 degrees F.

### MONTHLY WATER RATES FOR WHOLESALE AND INDUSTRIAL CONSUMERS

---

First	1,000 gallons	\$1.00 (Minimum)
Each additional	1,000 gallons	.70 per M gallons

Tap-on charge: Residential - \$175  
Commercial and Industrial - Actual  
cost of labor and materials

---

\*The capacity of the water treatment plant is being tripled. There are also plans to install 1.5 miles of additional water line.



Company serving Dry Ridge - Dry Ridge Waterworks Commission\*  
City Hall  
Broadway  
Dry Ridge, Kentucky 41035  
(606) 824-3335

Source - Treated water purchased from Williamstown Water Works  
and Bullock Pen Water District

Average daily consumption - 90,000 gallons

Peak daily consumption - 125,000 gallons

Storage capacity - 50,000 gallons

Size lines - 4, 6, and 8 inches

Average pressure - 52 psi

Average temperature - 65 degrees F.

MONTHLY WATER RATES FOR WHOLESALE  
AND INDUSTRIAL CONSUMERS

---

First	2,000 gallons	\$4.00 (Minimum)
Next	18,000 gallons	.80 per M gallons
All over	20,000 gallons	.70 per M gallons

Tap-on charge: Actual cost of labor and materials

---

\*The Dry Ridge Waterworks Commission recently installed 2,500 feet of 8-inch main and is now in the process of constructing a 100,000 gallon storage tank.

Name of water district - Bullock Pen Water District\*  
Dixie Highway  
Crittenden, Kentucky 41030  
(606) 428-2112

Area served - Crittenden, Dry Ridge, Verona (Boone County) and adjoining area

Date when water district began operating - 1959

Source of raw water - Bullock Pen Lake

Capacity of treatment plant - 360,000 gallons per day

Type of treatment - Rapid sand filter, chlorine

Average amount of water used in a 24-hour period - 270,000 gallons

Peak amount of water used in a 24-hour period - 360,000 gallons

Storage capacity - 280,000 gallons

Average pressure - 100 psi

Average temperature - 65 degrees F.

Size lines - 6, 4, 3, and 2

Rates -

#### SCHEDULE A (for 5/8-inch meter)

First 1,000 gallons	\$4.50 (Minimum)
Next 1,000 gallons	2.25 per M gallons
Next 3,000 gallons	2.00 per M gallons
Over 5,000 gallons	1.00 per M gallons

#### SCHEDULE B

First 3,000 gallons	\$9.00 (Minimum)
Next 2,000 gallons	2.25 per M gallons
Next 5,000 gallons	2.00 per M gallons
Over 10,000 gallons	1.00 per M gallons

Tap-on charge: Size connection charge

3/4-inch	\$220
1 -inch	300
1 1/2-inch	450
2 -inch or larger	850

---

\*The Bullock Pen Water District plans to expand the filtering plant capacity and to add a new storage tank and 35 miles of line. This will enable the water district to extend service into northern Grant County and to the area around Dry Ridge.



Surface water sources - Eagle Creek

Average discharge - Eagle Creek at Glencoe, 564 cfs (43-year record, USGS)

Expected ground water yield - 5 to 50 gpm along Eagle Creek, 5 gpm or less in remainder of county

### Sewerage

Company serving Williamstown - Williamstown Sewer Department  
114 Main Street  
Williamstown, Kentucky 41097  
(606) 824-4210

Design capacity - 375,000 gallons per day

Average daily flow - 110,000 gallons

Treatment - Secondary

Type treatment - Aeration, clarifier, chlorine contact basin

Treated effluent discharged into - Steam Mill Branch

Size of sanitary mains - 8, 10, and 12 inches

Size of storm mains - 6, 12, 16, 20, and 24 inches

Rates - \$2.00 minimum; 100 percent of monthly water bill plus \$1

Tap-on charge: \$10

Dry Ridge - Septic tanks are presently used for sewage disposal.

The Williamstown Sewer Department is implementing a system which will enable its plant to treat sewage from Dry Ridge. Sewer lines between Dry Ridge and Williamstown have been installed and extra pumping stations are being built.

Crittenden - Not presently served by sewers; septic tanks are used for sewage disposal.

## CLIMATE

### Grant County

#### Temperature

Annual mean (30-year record)	54.0 degrees
Average annual 1975	54.9 degrees
Record highest, August, 1962 (14-year record)	102.0 degrees
Record lowest, January, 1963 (14-year record)	- 19.0 degrees
Normal heating degree days (30-year record)	5,070
(Heating degree day totals are the sums of negative departures of average daily temperatures from 65 degrees F.)	

#### Precipitation

Mean annual total (30-year record)	39.04 inches
Mean annual snowfall (29-year record)	23.2 inches
Total precipitation 1975	44.23 inches
Mean number days precipitation (.01 inch or more) (28-year record)	129
Average number days thunderstorms (28-year record)	44

#### Prevailing Winds (16-year record)

South-southwest

#### Relative Humidity (13-year record)

1 a.m.	77 percent
7 a.m.	81 percent
1 p.m.	59 percent
7 p.m.	63 percent

Source: U. S. Department of Commerce, Environmental Science  
Services Administration, Climatological Data, 1975. Station  
of record: Cincinnati, Ohio (Greater Cincinnati Airport).



## LOCAL GOVERNMENT

### City

#### Williamstown

Structure - Mayor - 4-year term; 6 councilmen - 2-year terms

Receipts 1975 - General Fund                      \$121,333.69

                    Water and Sewer Fund    151,290.96

                    Utility Fund                      598,500.58

Fees and licenses - Business licenses for county residents range from \$5 to \$10 annually; licenses for out-of-county residents range from \$5 to \$25.75 annually

#### Dry Ridge

Structure - Mayor - 4-year term; 6 councilmen - 2-year terms

Budget 1976-77 - General Fund                      \$100,000

                    Water and Sewer Fund    42,000

Fees and licenses - Business licenses range from \$11 to \$100 annually; unloading license - \$15 annually

#### Crittenden

Structure - Board of Trustees - a chairman and 4 trustees - 2-year terms

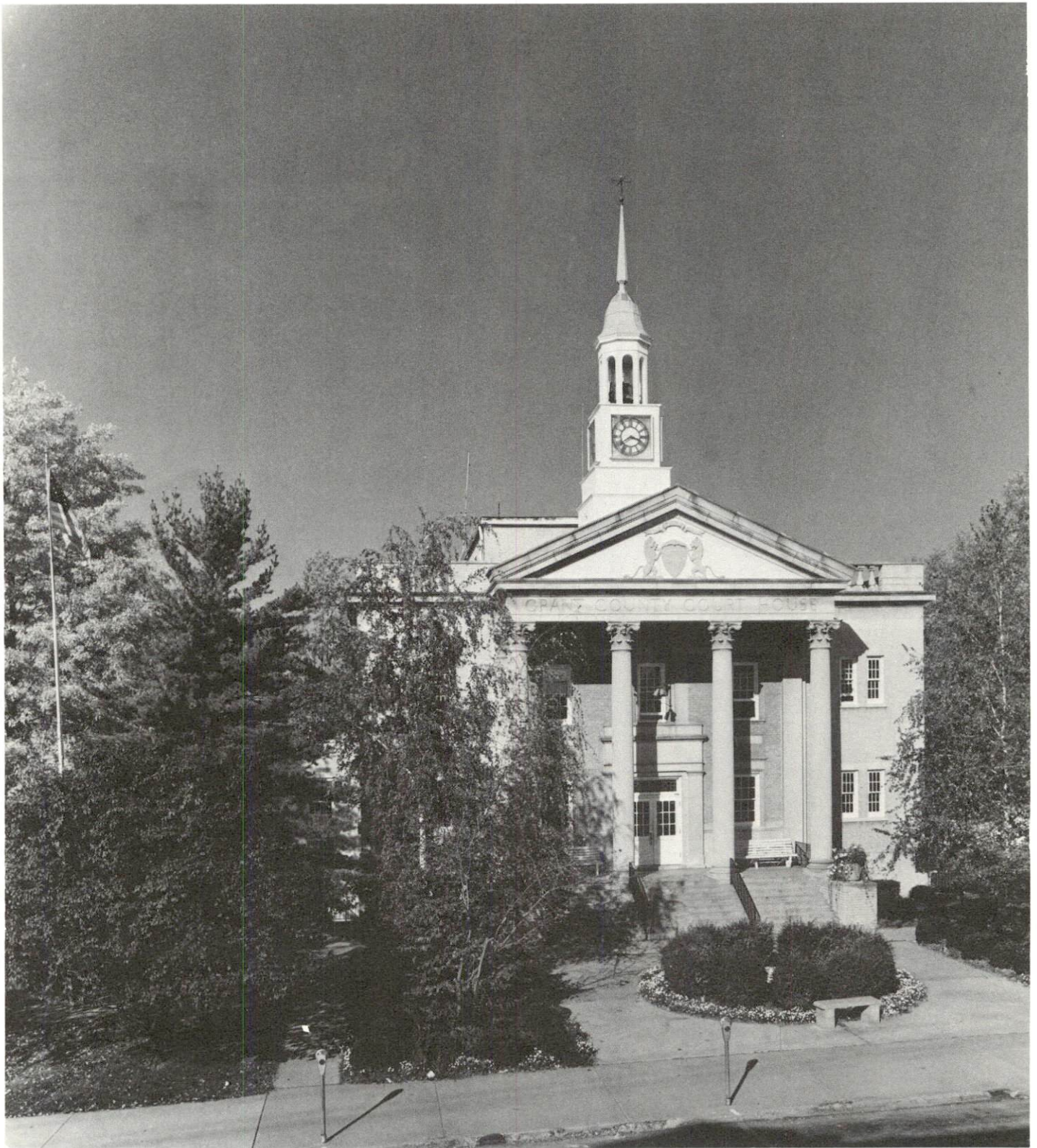
Budget 1975 - General Fund                      \$11,116.18

Fees and licenses - Business Licenses - \$10.75 to \$15.75 annually

### County

Structure - County Judge - 4-year term; 3 magistrates - 4-year term

Budget 1975-76 - General Fund \$155,011; Road Fund \$136,512



GRANT COUNTY COURTHOUSE



### Assessed Value of Property, 1975

<u>Classes of Property</u>	<u>Williamstown</u>	<u>Dry Ridge</u>
Real Estate and Tangibles	\$15,943,320	
Real Estate		\$5,998,793.42
Tangibles		2,400,939.90
	<u>Crittenden</u>	<u>Grant County</u>
Real Estate and Tangibles	\$2,690,070	
Real Estate		\$73,787,670*
Tangibles		17,357,870*

### Property Taxes

All property in Kentucky is assessed at 100 percent of fair cash value.

Land and buildings are taxed by the state and may be taxed by local jurisdictions. The state rate is \$0.315 per \$100 of assessed valuation. Beginning January 1, 1977, local school tax rates were reduced by \$0.30 per \$100 valuation and the state rate was increased by \$0.30 per \$100 (from \$0.015), resulting in no net change in the combined state and local rates.

Manufacturing machinery, raw materials inventories, pollution control equipment, and goods in the process of manufacture are not subject to local taxation. The state rate is \$0.15 per \$100.

Other tangible personal property owned by manufacturers (automobiles, trucks, finished goods, office furniture, office equipment) is taxed by the state at \$0.45 per \$100 and may be taxed by local jurisdictions. Beginning January 1, 1977, local school rates were reduced by \$0.30 per \$100 valuation and the state rate was raised by \$0.30 per \$100 (from \$0.15).

Property stored in public warehouses in a transit status is not subject to local taxation. The state rate is only \$0.015 per \$100.

Intangible personal property located in Kentucky (money in hand, shares of stock, notes, bonds, accounts, and other credits) is taxed by the state at \$0.25 per \$100, and is not subject to local taxation.

(Contd.)

\*1976 figures.

Intangible personal property owned by corporations in Kentucky as a result of business transactions performed out-of-state, but having a tax situs in Kentucky (accounts receivable, notes, bonds, credits, non-domestic bank deposits, licensing or royalty agreements, shares of stock of any affiliated company, etc.) is taxed by the state at \$0.015, and is not subject to local taxation.

Local Property Tax Rate Per \$100 of Assessed Valuation, 1976\*

<u>Taxing Jurisdiction</u>	<u>Williamstown</u>	<u>Dry Ridge</u>	<u>Crittenden</u>	<u>Grant County</u>
County	\$ .223	\$ .223	\$ .223	\$ .223
School	.756	.624	.624	.624
City	.200	.300	.240	

Utilities Gross Receipts Tax for Schools

Grant County levies a 3 percent tax on utilities receipts for schools. This tax is paid by all consumers of utilities as an add-on to the utilities bills. Exempted are receipts from utilities services that are resold and the receipts from the sale of energy or energy producing fuels that exceed 3 percent of the cost of production in manufacturing, processing, mining or refining.

Planning and Zoning

Grant County

County Agency - Planning Commission of Grant County

Zoning enforced - All areas

Subdivision regulations enforced - All areas

Local codes enforced - Building

Mandatory state codes enforced - Plumbing, National Fire Protection

Association Code, National Building Code (for major buildings and residential construction containing more than 12 bedrooms per building)

\*Kentucky Department of Revenue.



Safety

<u>Police</u>	<u>Williamstown</u>	<u>Dry Ridge</u>	<u>Crittenden</u>	<u>Grant County</u>
Total staff	5	5	State Police	4
Radio-patrol cars	3	1	Barracks #6	2
			is located	
			4 $\frac{1}{2}$ miles from	
			Crittenden	

Fire

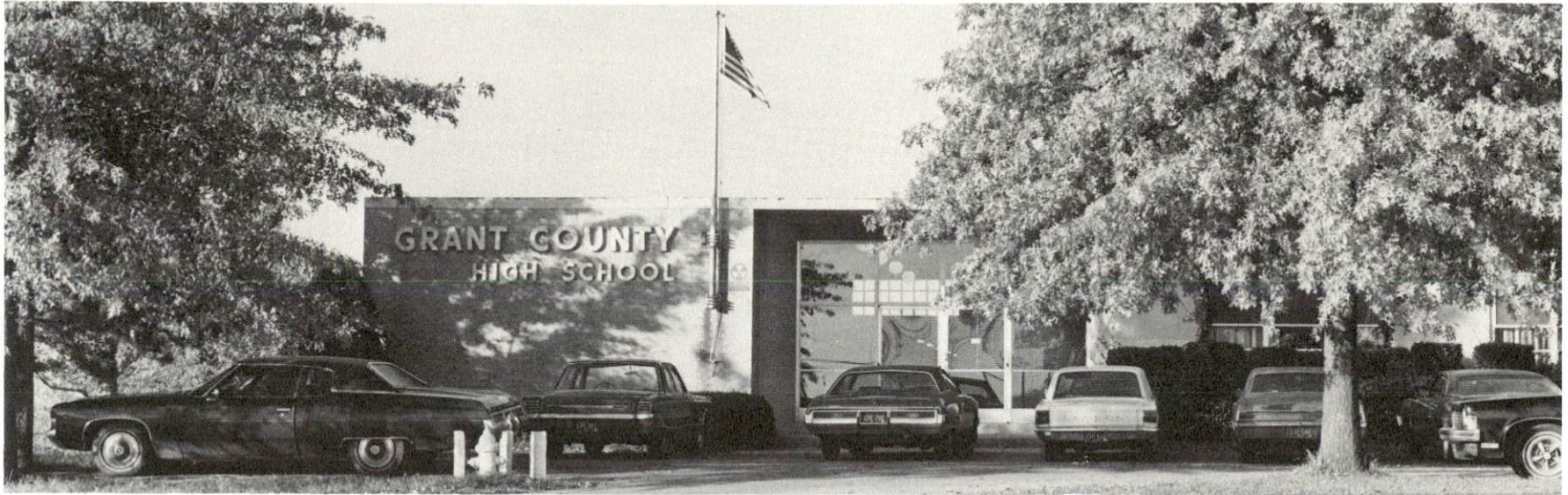
## American Insurance

## Association Fire

Rating	7	7		
Volunteers	32	35	32	

Solid Waste

	<u>Williamstown</u>	<u>Dry Ridge</u>	<u>Crittenden</u>
Type service	Municipal	Private	Private
Fee charged:			
residential	Free	\$2 per month	\$ .50 per week
business	Varies with service	Varies with service	Varies with service
industrial	Varies with service	Varies with service	Varies with service
Collection frequency:			
residential	Once weekly	Once weekly	Once weekly
business	As needed	As needed	As needed
industrial	As needed	As needed	As needed
Trash pickup	Weekly	Weekly	Weekly
Disposal method	Sanitary landfill	Sanitary landfill	Sanitary landfill



GRANT COUNTY HIGH SCHOOL



WILLIAMSTOWN JUNIOR-SENIOR HIGH SCHOOL

# EDUCATION

## Public Schools

	<u>Williamstown Independent</u>	<u>Grant County</u>
Total Enrollment		
(September, 1976)	543*	2,200
Elementary	306	1,518
Junior High	98	
High School	139	682
Student-Teacher Ratio	20-1	19-1
Elementary	28-1	19-1
Junior High	25-1	
High School	12-1	21-1
Percent High School		
Graduates to College	32.0	32.0
Expenditures Per Pupil		
(1974-75)	\$788.71	\$680.78
Bonded Indebtedness,		
June 30, 1976	\$777,000	\$1,912,000

\*The Williamstown Independent School System also operates a kindergarten (enrollment 48) and a Head Start Program (enrollment 33).



### Area Colleges and Universities

<u>Name</u>	<u>Location (Miles from Williamstown)</u>	<u>Enrollment (Fall, 1975)</u>	<u>Highest Degree Conferred</u>
Georgetown College	Georgetown (32)	1,062	Masters
Thomas More College	Ft. Mitchell (36)	1,352	Baccalaureate
Northern Kentucky University	Covington (40)	6,041	Master, J. D.*
College of Mt. St. Joseph on the Ohio (women)	Cincinnati, Ohio (41)	886	Baccalaureate
Edgecliff College	Cincinnati, Ohio (41)	930	Baccalaureate
Hebrew Union College	Cincinnati, Ohio (41)	216	Masters, Ph. D., D. N. L.
University of Cincinnati	Cincinnati, Ohio (41)	38,841	Academic and Professional
Xavier University	Cincinnati, Ohio (41)	6,265	Masters
Midway Junior College	Midway (42)	350	Associate
Transylvania University	Lexington (45)	722	Masters**
University of Kentucky	Lexington (45)	22,526	Ph. D., M. D., J. D., D. M. D.
Lexington Technical Institute	Lexington (45)	1,654	Associate
Kentucky State University	Frankfort (50)	2,246	Masters

\*Including the Salmon P. Chase College of Law.

\*\*Courses in the Masters degree program are taught on the Transylvania campus by Xavier University, Cincinnati, faculty members. The degree is issued by Xavier University.

## Vocational Schools

	<u>Nearest State School</u>	<u>Nearest Area Education Center</u>
	Northern Kentucky State Vocational-Technical School	Harrison County Area Vocational Education Center
Location	Covington	Cynthiana
Miles Distant	40 miles north of Williamstown	28 miles southeast of Williamstown
Curriculum	Clerical Data Processing Secretarial Child Care Services Clothing Services Commercial Foods Food Service Cosmetology Practical Nursing Industrial Education Air Conditioning and Heating Auto Body Repair Auto Mechanics Carpentry Commercial Art Drafting Electronics (Technology) Graphic Arts (Printing) Machine Shop Radio and TV Repair Welding	Business and Office Health and Personal Services Industrial Education Auto Mechanics Carpentry Drafting Machine Shop Welding

Arrangements can be made to provide training in the specific production skills required by an industrial plant. Instruction may be conducted either in the vocational school or in the industrial plant, depending upon the desired arrangement and the availability of special equipment.





GRANT COUNTY HOSPITAL



## HEALTH

### Local Medical Personnel

	<u>Williamstown</u>	<u>Dry Ridge</u>
Physicians -	1	2
Dentists	2	1

### Hospitals

<u>General Hospital</u>	<u>Location</u>	<u>Beds</u>
Grant County Hospital	Williamstown	30

General hospital facilities - TB clinic, emergency room, operating facilities, complete laboratory, X-ray, electrocardiogram data phone

Medical staff - Consulting dietician, surgeon, 4 medical doctors, dentist, 10 registered nurses, consulting pathologist, radiologist, 2 lab technicians, 2 X-ray technicians

### Ambulance Service

Name - Grant County Ambulance Service  
Staff - 6 Emergency Medical Technicians  
Service - 24-hour, county wide  
Equipment - One ambulance

### Nursing Homes

	<u>Number</u>	<u>Beds</u>
Nursing home*	1	32
Personal care homes*	2	79

### Public Health

Facility - Grant County Health Department  
Staff - Two registered nurses, clerk typist, county sanitarian, county plumbing inspector (part time)

\*Located in Dry Ridge.

## OTHER LOCAL FACILITIES

### Communications

	<u>Williamstown</u>	<u>Dry Ridge</u>
Telephone - Services -	Cincinnati Bell, Inc. Standard	Cincinnati Bell, Inc. Standard
Telegraph -	Western Union, Covington office	Western Union Covington office
Postal - U. S. Post Office		
Class -	Second	Second
Mail received -	Once daily	Once daily
Mail dispatched -	Once daily	Once daily
Newspapers -	Grant County News	
Weekly and circulation -	4,400	
Other papers received from -	Cincinnati, Louisville, Lexington, Covington Owenton, Falmouth	Cincinnati, Louisville, Lexington, Williams- town, Owenton, Covington, Falmouth, Walton, Georgetown
Radio -		
Stations received from-	Cincinnati, Louisville, Lexington, Erlanger Covington, Cynthiana Carrollton	Cincinnati, Louisville, Lexington, Erlanger, Carrollton, Owenton, Cynthiana
Television -		
Reception from -	Cincinnati, Louisville, Lexington	Cincinnati, Louisville, Lexington
Kentucky Educational Television -	Covington transmitter- Channel 54 Lexington transmitter- Channel 46 Owenton transmitter- Channel 52	Covington transmitter- Channel 54 Lexington transmitter- Channel 46 Owenton transmitter- Channel 52



## Communications

### Crittenden

Telephone - Services -	Cincinnati Bell, Inc. Standard
Telegraph -	Western Union, Covington office
Postal - U. S. Post Office Class - Mail received Mail dispatched -	Third Once daily Once daily
Newspapers - Papers received from -	Cincinnati, Louisville, Williamstown, Covington, Walton
Radio - Stations received from -	Cincinnati, Louisville, Lexington, Erlanger, Carrollton, Covington, Owenton, Cynthia
Television - Reception from -	Cincinnati, Dayton, Louisville, Lexington
Kentucky Educational Television -	Covington Transmitter - Channel 54 Lexington Transmitter - Channel 46 Owenton Transmitter - Channel 52

## Library Services

Public library - Grant County Library  
Size collection - 18,000 volumes  
Circulation, 1975-76 - 55,779 (including 32,946 in the bookmobile)  
Services - Bookmobile, reader-printer, copying machine, magazines, newspapers, art prints, film and projector, record player and records, film strips, tape cassette player and tapes, story hour, services to the jail and hospital, summer reading programs, services for the blind and handicapped, reading guidance and reference assistance, games, inter-library loan

## Religious Institutions

	<u>Williamstown</u>	<u>Dry Ridge</u>	<u>Crittenden</u>
Number of churches -	6	6	7
Denominations -	Baptist Catholic Christian Church of God Jehovah's Witnesses Methodist	Assembly of God Baptist Christian	Baptist Christian Church of Christ Disciples of Christ Full of Gospel Pilgrim Holiness
Nearest Synagogues -	Cincinnati, Ohio, 41 miles north of Williamstown		
Congregations -	16 synagogues (orthodox, reform, traditional and conservative)		

## Financial Institutions

<u>Banks</u>	<u>Assets</u>	<u>Deposits</u>	<u>Statement Date</u>
<u>Williamstown</u>			
Bank of Williamstown	\$18,222,815.22	\$16,548,123.34	6/30/76
Grant County Deposit Bank	11,632,631.22	10,410,652.86	6/30/76
<u>Dry Ridge</u>			
Citizens Bank	8,973,308.22	8,004,222.84	6/30/76
<u>Crittenden</u>			
Bank of Crittenden	6,087,000.00	5,477,000.00	6/30/76
<u>Savings and Loan Associations</u>	<u>Assets</u>	<u>Shared Accounts</u>	<u>Statement Date</u>
<u>Williamstown</u>			
Kentucky Federal Savings and Loan Association*	\$33,057,288.02	\$29,488,240.18	12/31/75

\*Branch office of the Kentucky Federal Savings and Loan Association  
located in Covington.

## Hotels and Motels

	<u>Williamstown</u>	<u>Dry Ridge</u>
Total number	6	1
Total units	232	20

## Clubs and Organizations

### Williamstown

Business and Civic - Grant County Chamber of Commerce, Jaycees, Lions, Kiwanis

Fraternal - Masons, American Legion

Women's - American Legion Auxiliary, Daughters of American Revolution, Eastern Star, Younger Women's Club, Williamstown Woman's Club, Grant County Woman's Club, Grant County Hospital Auxiliary, Homemakers

Youth - Boy Scouts, 4-H, Junior Conservation, Little League, FHA, FFA

Other - Grant County Historical Society

### Dry Ridge

Business and Civic - Kiwanis

Fraternal - Masons

Women's - Homemakers, Eastern Star, Carlsbad Garden Club

Youth - Sportsmen's Club, 4-H, Boy Scouts, Rainbow Girls, DeMolay

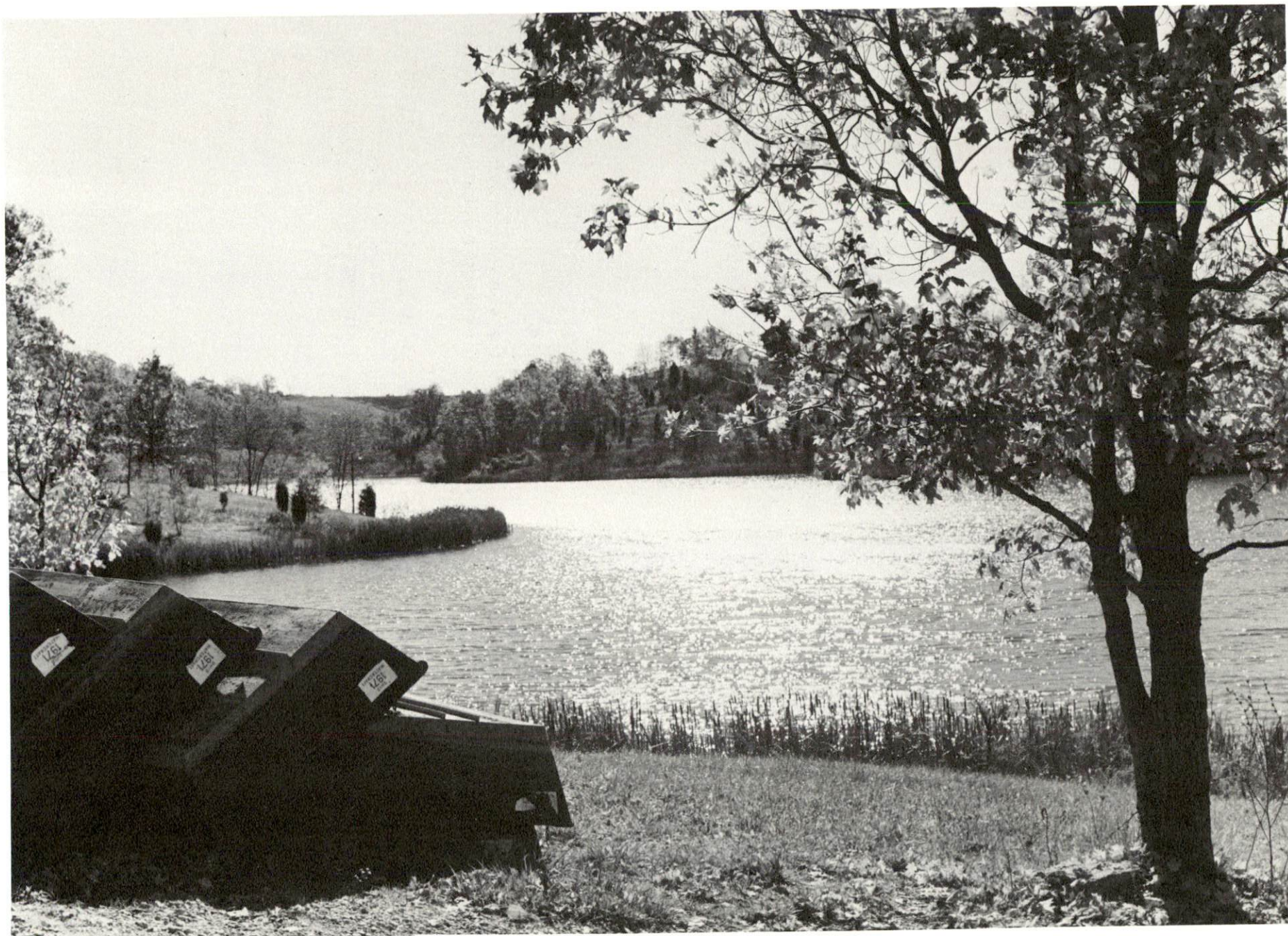
### Crittenden

Fraternal - Masons

Women's - Fire Department Auxiliary, Homemakers, Carlsbad Garden Club

Youth - Boy Scouts





WILLIAMSTOWN LAKE



## RECREATION

### Local

Williamstown's city park has recently been opened. The park contains two tennis courts, basketball court, volleyball court, two shuffleboard courts, two horse shoe pits, a tot lot, picnic area, picnic tables, two shelter houses, and a group camping area. Plans call for the continuing expansion of park facilities. Other public facilities in Williamstown include playgrounds, a tennis court, and two baseball diamonds.

Public recreational facilities are available in Dry Ridge at the public park. These facilities include three playgrounds, a tennis court, and a baseball diamond. In addition, a baseball diamond, basketball court, and tennis court are located at the high school. A drive-in movie theater is also located in Dry Ridge.

The Grant County Park at Crittenden contains a horse ring and stadium, playground, two baseball diamonds, basketball court, and picnic area with five shelter houses. Plans have been made to add a tennis court to the park.

Four fishing lakes provide excellent opportunity for recreation. These are the 135-acre Lake Boltz, near Dry Ridge; the 142-acre Bullock Pen Lake, near Crittenden; the 305-acre Williamstown Lake at Williamstown; and 100-acre Corinth Lake, near Corinth in southern Grant County.

### Area (Within 50 miles)

1. Kincaid Lake State Park near Falmouth, approximately 23 miles from Williamstown, features the 175-acre Kincaid Lake and offers hiking trails, swimming, bathhouse, beach, fishing, motors, dock, slips, picnic shelters, playground, amphitheater, badminton, shuffleboard, and miniature golf.

2. Big Bone Lick State Park, 27 miles away, lies in an area which is the greatest graveyard of ice-age animals ever found. The park museum features many bones and teeth of mammoths, mastadons, etc. The park also offers picnic area, fishing boat rentals, and tent and trailer camping.

3. The Northern Kentucky-Cincinnati area, 40 miles to the north, offers a wide variety of entertainment, historic sites, and excellent cultural and sporting events.

4. Lexington, 45 miles to the south in the heart of the Bluegrass, features horse farms, historic buildings, horse racing, guided tours, and a variety of entertainment and cultural events.

5. Frankfort, the capital of Kentucky, is 50 miles from Williamstown and features the Capitol Building, Old State House, museums, and numerous historic houses and other sights of interest. Twelve major attractions are located along a marked tour route.



## COMMUNITY IMPROVEMENTS

### Recent:

#### Williamstown

1. The Williamstown Water Works has erected a 200,000 gallon storage tank and added 1.5 miles of 10-inch main.
2. The Williamstown Utility Department has added a new 72,000-volt power line. Williamstown now has three separate power feeders (two voltages) which minimizes the danger of brownouts. The new high power line primarily serves the city's industries and will be extended to other portions of the city as needed.
3. The Williamstown Sewer Department has extended service to an additional 65 homes.
4. Two new industries have begun operation in the city - Phillip Products Company, Inc., and the Sunn Musical Equipment Company.
5. Phillips Products Company, Inc., has remodeled its factory and constructed an addition which provides office and storage space.
6. The Kentucky Federal Savings and Loan Association of Covington has opened a branch in Williamstown.
7. The Williamstown Independent School System has remodeled its high school building, and grades 3 through 6 are now located there.
8. The new Williamstown city park has been opened. This 15-acre park contains recreational, picnic, and group camping facilities.
9. The Williamstown Volunteer Fire Department has purchased a new 1,000-gallon-per-minute pumper.
10. The City has repaved its three large, free municipal parking lots.

### Dry Ridge

1. A new main has been laid from Williamstown to Dry Ridge (the Dry Ridge Waterworks Commission purchases water from the Williamstown Water Works). 2,500 feet of 4-inch water line within the city has been replaced with 8-inch line.
2. In recent years four new businesses have opened in Dry Ridge, three have been remodeled and expanded, and one has constructed and moved into a new building.
3. The Grant County School System has initiated a Practical Arts course of study. This is an exploratory course which assists students in choosing life careers.
4. A new city park has been completed. This park contains both recreational and picnic facilities.

### Crittenden

1. Two mobile home parks have been developed near Crittenden.
2. The Crittenden Volunteer Fire Department has purchased a 500-gallon-per-minute mini-pumper, 1,200 feet of new hose, and \$1,000 worth of various other equipment.

### Underway:

#### Williamstown

1. The Williamstown Water Works presently has underway a \$1 million expansion of its treatment plant. This will triple the plant's capacity.
2. The Bank of Williamstown is building a new headquarters building in central Williamstown.

### Dry Ridge

1. The Dry Ridge Waterworks Commission is constructing a new 100,000 gallon storage tank
2. Sewerage service is to be provided to Dry Ridge by the Williamstown Sewer Department. Mains have been extended to Dry Ridge and pumping stations are now being installed.

3. The Grant County Board of Education is presently engaged in a building program at the Dry Ridge Elementary School grounds which will increase the capacity of the existing facility to accommodate all Junior High students from the Crittenden, Mt. Zion and Dry Ridge areas. The program will also create additional classroom space to accommodate anticipated growth in county enrollment.
4. A new subdivision, containing approximately 50 lots, is being developed near the city.

#### Crittenden

1. The City is resurfacing all streets within the city.

#### Planned:

#### Williamstown

1. The Williamstown Water Department plans to add another 1.5 miles of water line.
2. The Grant County Deposit Bank will expand into the space vacated by the Bank of Williamstown when the latter moves into its new building.
3. A nonprofit organization plans to construct 34 units of federally subsidized housing for the elderly.
4. The Williamstown Independent School System will construct 6 or 8 new classrooms at the high school and locate Head Start, first and second grades there. All grades will then be located in one building complex.
5. The Grant County Hospital plans to construct an expansion which will double its office space.
6. Preliminary plans are being made for the development of a Grant County Airport.
7. A continuing expansion of facilities is planned for Williamstown's new park.



### Dry Ridge

1. The Grant County Ambulance Service plans to add another ambulance and more staff.
2. A 94-unit motel and restaurant has been proposed for Dry Ridge.

### Crittenden

1. The Bullock Pen Water District plans a \$1.5 million extension and improvement of its services and facilities. The treatment plant capacity will be increased to 1 million gallons per day. The Water District will also construct a new storage tower at Verona (in southern Boone County) and add some 35 miles of line in northern Grant County and around Dry Ridge.
2. A new tennis court is being planned for Grant County Park.

## HISTORY

Grant County occupies 249 square miles in the Outer Bluegrass Region of Kentucky. Its surface is rolling, and its soil ranges from very fertile to moderately fertile. A low ridge, The Cincinnati Arch, extends across it from the south to the north, forming a watershed between the Licking and Kentucky Rivers. There are some forested areas scattered throughout the region.

The formation of the county dates from 1820, following a hotly contested legislative election and subsequent struggle in the state legislature. Kentucky's sixty-seventh county, Grant, was named for Samuel Grant, who lost his life in a struggle against the Indians in 1794. The county seat is Williamstown, originally named Philadelphia. Williamstown is named for William Arnold, an early settler in Grant County, who gave the land on which Williamstown's public buildings are built.

The county's earliest recorded population figure was 1,805 for 1820. In 1900, an all-time high of 13,239 was reached. Population then declined steadily, reaching 9,489 in 1960. Since then, population has increased, reaching 9,999 in 1970 and an estimated 11,700 in 1975.

The key to Grant County's economic growth lies in its location between Lexington and Cincinnati on Interstate 75 and on the Southern Railway line. Excellent recreational facilities are also plentiful within just a few minutes drive.

The total number of Grant county residents employed in 1975 averaged 4,000, with nonagricultural jobs accounting for 3,510 workers. Manufacturing employers in the county reported 100 workers; construction firms 50; transportation, communications, and public utilities 110; wholesale and retail trade 530; finance, insurance, and real estate 90; and employees in the service industries 190. Major industrial products are polyethylene products and amplifier and speaker equipment.

Kentucky Department of Commerce  
Capital Plaza Tower  
Frankfort, Kentucky 40601

Industrial Development Division  
(502) 564-7140

Community Services Division  
(502) 564-4300

Business Development Division  
(502) 564-3862

Research and Planning Division  
(502) 564-4886

Office of Minority Business Enterprise  
(502) 564-4270

Map Sales Office  
133 Holmes Street  
(502) 564-4715

International Trade & Investment  
Promotion Division  
(502) 564-2170

Agri-Business Division  
(502) 564-6784

Industrial Development Finance Authority  
(502) 564-4554