

1973

Industrial Resources: Graves County - Mayfield

Kentucky Library Research Collections
Western Kentucky University, spcol@wku.edu

Follow this and additional works at: https://digitalcommons.wku.edu/graves_cty

 Part of the [Business Administration, Management, and Operations Commons](#), [Growth and Development Commons](#), and the [Infrastructure Commons](#)

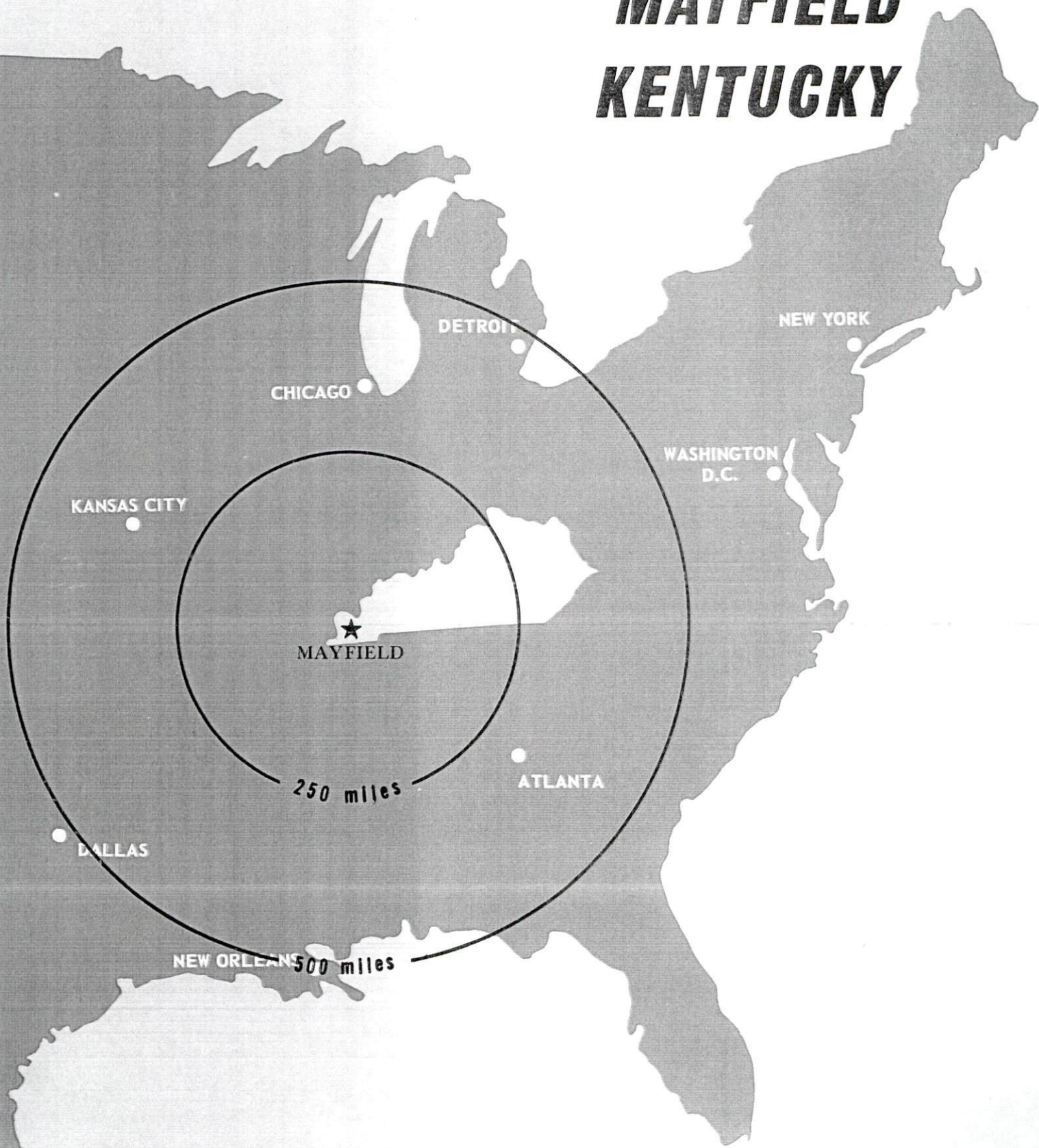
Recommended Citation

Kentucky Library Research Collections, "Industrial Resources: Graves County - Mayfield" (1973). *Graves County*. Paper 11.
https://digitalcommons.wku.edu/graves_cty/11

This Report is brought to you for free and open access by TopSCHOLAR®. It has been accepted for inclusion in Graves County by an authorized administrator of TopSCHOLAR®. For more information, please contact topscholar@wku.edu.

INDUSTRIAL RESOURCES

MAYFIELD KENTUCKY



GRAVES COUNTY, KENTUCKY

MAYFIELD INDUSTRIAL SITES

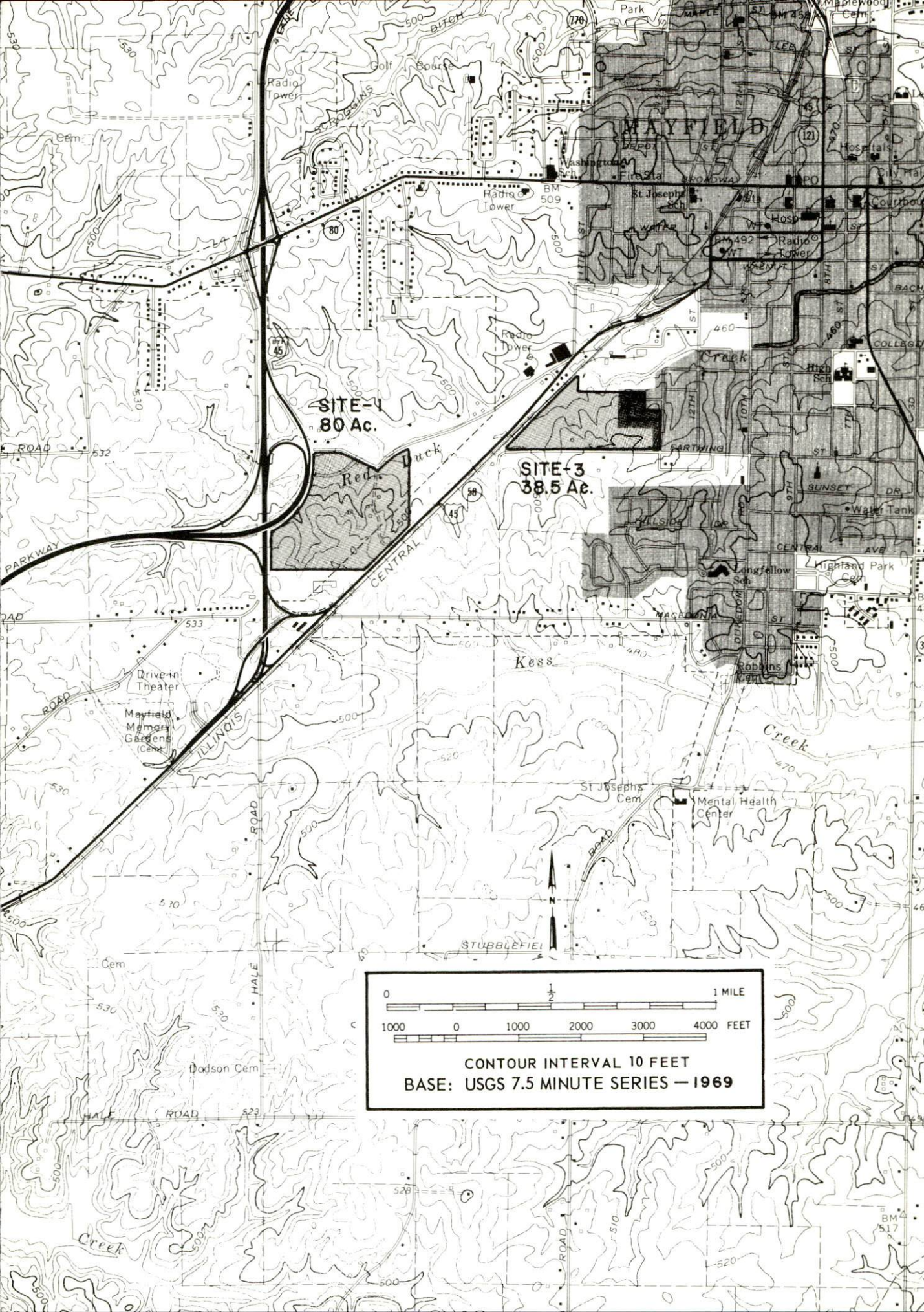
1973

MAYFIELD INDUSTRIAL SITES

For more information about the following sites, contact Mr. Larry Winders, Mayfield-Graves County Chamber of Commerce, Mayfield, Kentucky, or the Kentucky Department of Commerce, Capital Plaza Office Tower, Frankfort, Kentucky.

SITE #1: ACREAGE: 80 acres
 LOCATION: On U. S. Highway 45 S, outside the city limits
 ZONING: No zoning
 HIGHWAY ACCESS: Jackson Purchase Parkway and inter-
 change on western boundary of site. U.S. Highway 45
 forms southeast boundary. Access to site via U. S. 45.
 RAILROAD: Illinois Central Railroad along southeast
 side of U. S. 45 parallel to southeast boundary of site
 WATER: Mayfield Electric and Water System
 SIZE LINE: 12-inch line on site
 GAS: Western Kentucky Gas Company
 SIZE MAIN: 4-inch main on site
 ELECTRICITY: Mayfield Electric and Water System
 SEWERAGE: Mayfield Electric and Water System
 SIZE LINE: 8-inch line 750 feet from southeast corner;
 10-inch line 2,400 feet from northeast corner of site
 OWNERSHIP: Industrial Development Board, Mayfield-Graves
 County Chamber of Commerce

SITE #3: ACREAGE: 38.5 acres
 LOCATION: Within southern city limits
 ZONING: Light industrial
 HIGHWAY ACCESS: Fronts on city maintained street
 RAILROAD: Illinois Central Railroad forms western
 boundary of site
 WATER: Mayfield Electric and Water System
 SIZE LINE: 12-inch line along west side of U. S. 45,
 parallel to west boundary of site
 GAS: Western Kentucky Gas Company
 SIZE MAIN: 4-inch main along west side of U. S. 45,
 parallel to west boundary of site.
 ELECTRICITY: Mayfield Electric and Water System
 SEWERAGE: Mayfield Electric and Water System
 SIZE LINE: 10-inch line on northwest corner of site
 OWNERSHIP: Private



SITE-1
80 Ac.

SITE-3
38.5 Ae.

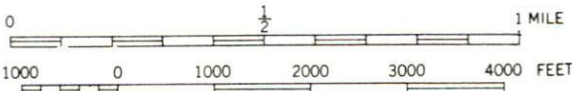
MAYFIELD

Red Duck
Creek

Kess

Creek

STUBBLEFIELD



CONTOUR INTERVAL 10 FEET
BASE: USGS 7.5 MINUTE SERIES — 1969

CURRENT INDUSTRIAL RESOURCES, MAYFIELD, KENTUCKY

This is a 1974 supplement to "Industrial Resources, Mayfield, Kentucky" which was published in 1973.

Population

	<u>1972</u> (Provisional)	<u>1970</u>	<u>1960</u>
Mayfield	N. A.	10,724	10,762
Graves County	31,300	30,939	30,021
Labor Market Area	152,500	148,911	137,390
(Includes Graves, Calloway, Carlisle, Hickman, Marshall, and McCracken Counties.)			

General Employment Characteristics

<u>Industry</u>	<u>Employment 1972</u>	
	<u>Graves County</u>	<u>Labor Market Area</u>
TOTAL	12,190	62,490
Agricultural	1,280	3,880
Nonagricultural	10,910	58,610
Manufacturing	3,770	14,846
Trades and Services	1,080	15,272
Government	2,401	10,730
Other	3,659	17,762

Manufacturing Employment

<u>Type Industry</u>	<u>Graves County</u>			<u>Labor Market Area</u>		
	<u>March</u> <u>1973</u>	<u>March</u> <u>1963</u>	<u>%Change</u>	<u>March</u> <u>1973</u>	<u>March</u> <u>1963</u>	<u>%Change</u>
TOTAL	4,124	3,270	26.1	15,785	11,597	36.1
Food & Kindred Products	69	209	- 67.0	750	863	-13.1
Apparel, Textiles, Leather	1,642	2,016	- 18.6	3,603	3,832	- 6.0
Lumber, Furniture	23	69	- 66.7	858	568	51.1
Printing & Publishing, Paper	63	52	21.2	357	276	29.3
Chemicals, Petroleum & Coal, Rubber	1,536	513	199.4	5,293	3,332	58.9
Stone, Clay & Glass	359	176	104.0	500	286	74.8
Primary Metals	0	0	0	888	467	90.1
Machinery & Metal Products, Equipment	274	13	2007.7	3,255	1,745	86.5
Other	158	222	- 28.8	281	228	23.2

There are presently 26 manufacturing firms in Mayfield. Major firms, employment, and year started operations:

<u>Firms</u>	<u>Employment</u>	<u>Year started operations</u>
General Tire & Rubber Co.	1,552	1960
Merit Clothing Company, Inc.	1,460	1899
Curlee Clothing Co.	625	1929
Rowan Ceramics Corporation	369	1961
Centac Division - Ingersoll Rand Co.	236	1970
Consolidated Novelty Co.	200	1969
Andover Clothes, Inc.	114	1946

Labor Supply

	<u>Graves County</u>			<u>Labor Market Area</u>		
	<u>Total</u>	<u>Male</u>	<u>Female</u>	<u>Total</u>	<u>Male</u>	<u>Female</u>
Current (1973)	2,520	1,420	1,100	12,670	5,770	6,900
Potential additions next five years	2,776	1,443	1,333	13,403	6,837	6,566

Personal Income

Graves County, 1971: Per Capita - \$3,259
1961: Per Capita - \$1,621

Local Government

Property Tax Rates

Property tax rates per \$100 of assessed valuation, 1973.

	<u>Mayfield</u>	<u>Graves County</u>
State	\$.015	\$.015
County	.162	.162
School	.952	.341
City	.360	
Total	\$1.489	\$.518

Special (Not county wide): West Mayfield Watershed \$.110

MAYFIELD INDUSTRIAL SITES

1974

MAYFIELD INDUSTRIAL SITES

1974

For more information about the following sites, contact Mr. Larry Winders, Mayfield-Graves County Chamber of Commerce, Mayfield, Kentucky, or the Kentucky Department of Commerce, Capital Plaza Office Tower, Frankfort, Kentucky.

SITE #1: ACREAGE: 80 acres

LOCATION: On U. S. Highway 45, outside the city limits

ZONING: No zoning

HIGHWAY ACCESS: Jackson Purchase Parkway and interchange on western boundary of site. U. S. Highway 45 forms southeast boundary. Access to site via U. S. 45.

RAILROAD: Illinois Central Gulf Railroad along southeast side of U. S. 45 parallel to southeast boundary of site

WATER: Mayfield Electric and Water System

SIZE LINE: 12-inch line on southeast corner of site

GAS: Western Kentucky Gas Company

SIZE MAIN: 4-inch main on site

ELECTRICITY: Mayfield Electric and Water System

SEWERAGE: Mayfield Electric and Water System

SIZE LINE: 8-inch line along southeast boundary; 10-inch line 2,400 feet from northeast corner of site

OWNERSHIP: Industrial Development Board, Mayfield-Graves County Chamber of Commerce

SITE #3: ACREAGE: 38.5 acres

LOCATION: Within southern city limits

ZONING: Light industrial

HIGHWAY ACCESS: Fronts on city maintained street

RAILROAD: Illinois Central Gulf Railroad forms western boundary of site

WATER: Mayfield Electric and Water System

SIZE LINE: 12-inch line along west side of U. S. 45, parallel to west boundary of site

GAS: Western Kentucky Gas Company

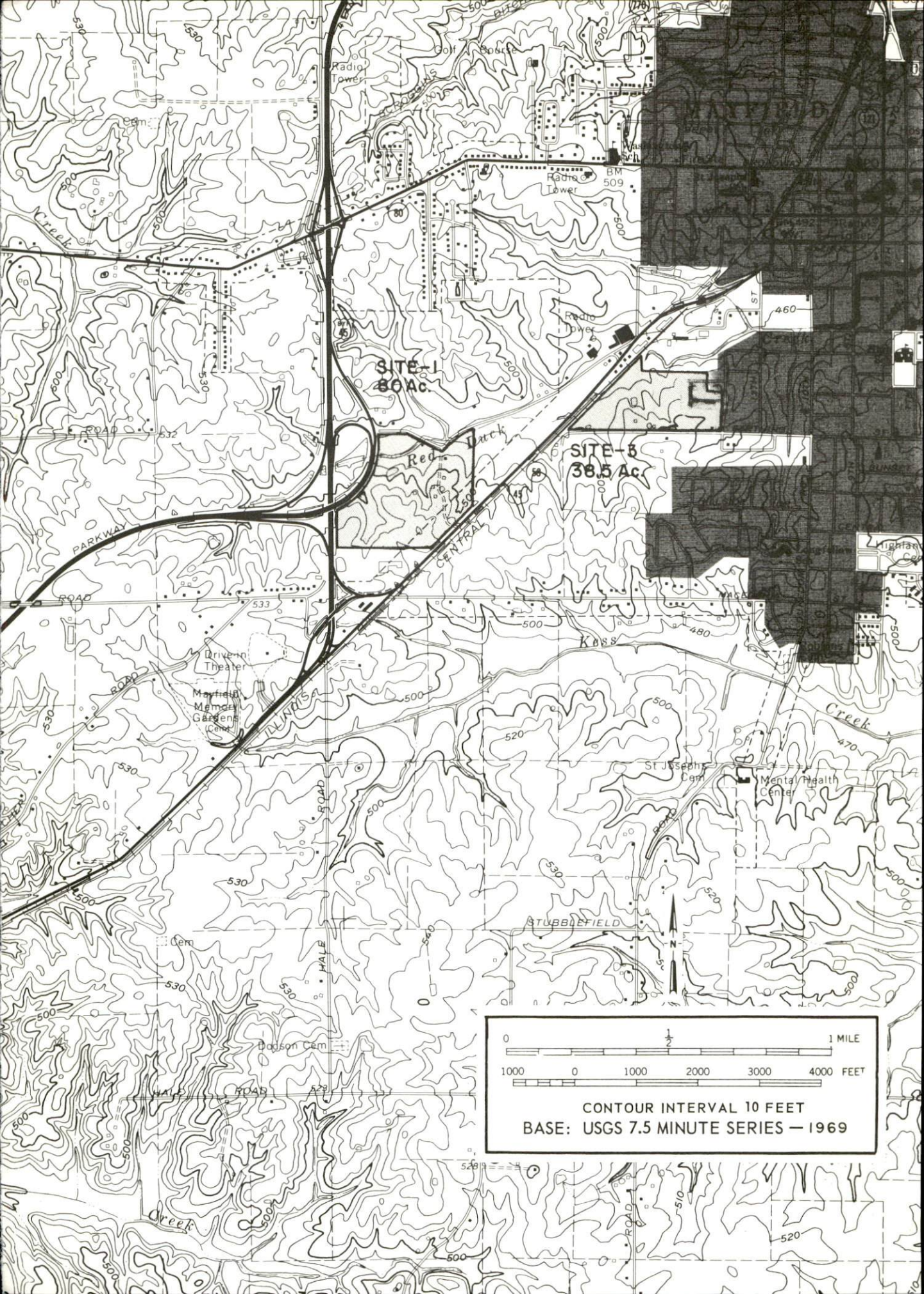
SIZE MAIN: 4-inch main along west side of U. S. 45, parallel to west boundary of site

ELECTRICITY: Mayfield Electric and Water System

SEWERAGE: Mayfield Electric and Water System

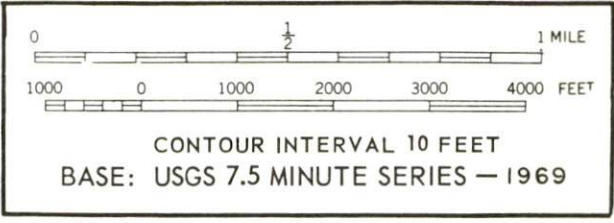
SIZE LINE: 10-inch line on northwest corner of site

OWNERSHIP: Private



SITE-1
80 Ac

SITE-8
38.5 Ac



CONTOUR INTERVAL 10 FEET
BASE: USGS 7.5 MINUTE SERIES — 1969

INDUSTRIAL RESOURCES

MAYFIELD, KENTUCKY

Prepared by

The Kentucky Department of Commerce

in cooperation with

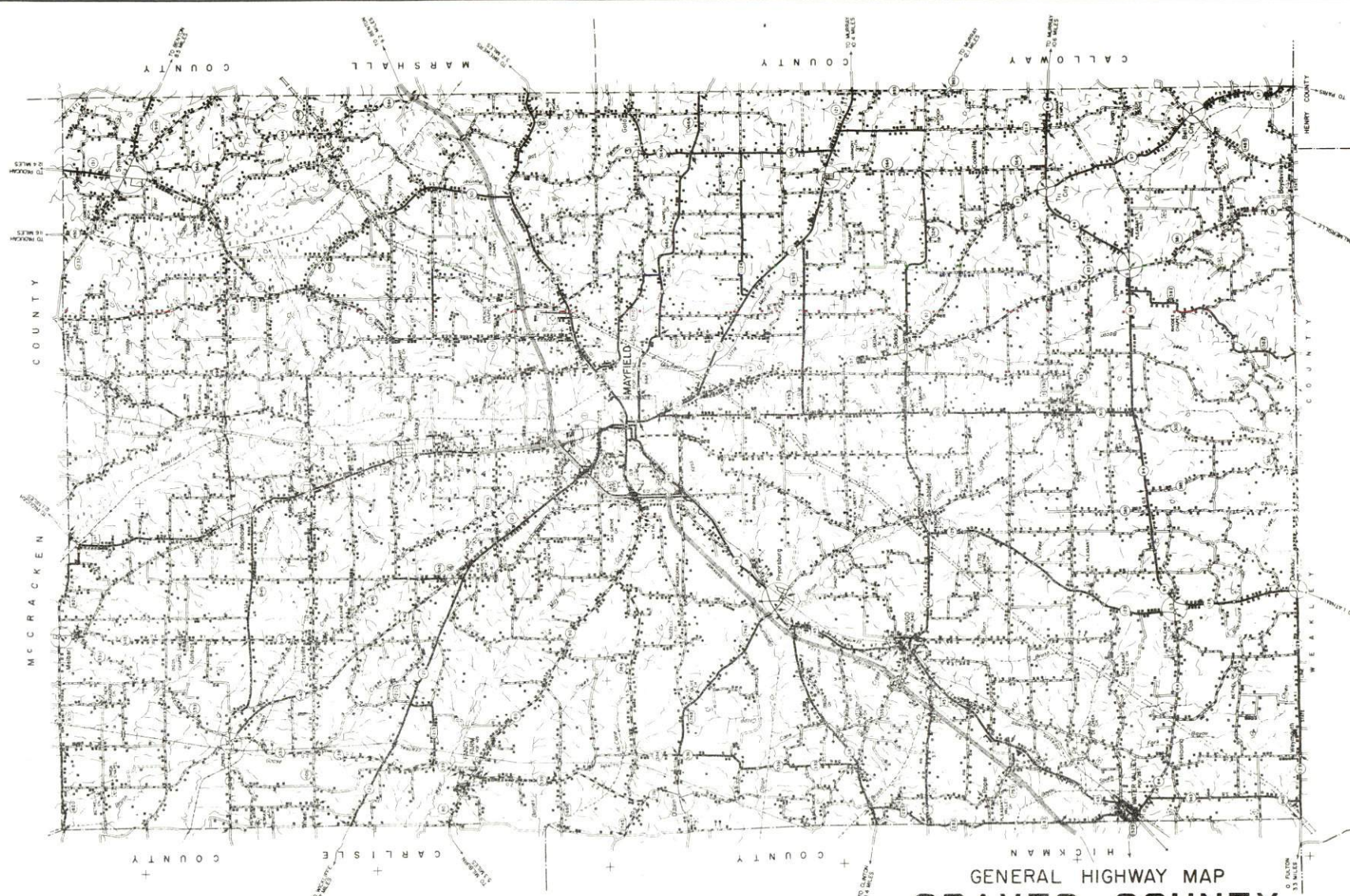
The Mayfield-Graves County Chamber of Commerce

1973

TABLE OF CONTENTS

<u>Chapter</u>	<u>Page</u>
INDUSTRIAL SITES	i
MAYFIELD, KENTUCKY - A RESOURCE PROFILE	1
THE LABOR MARKET	5
Population Trends	5
General Employment Characteristics, 1971	5
Manufacturing Employment Trends by Industry	5
Major Mayfield Manufacturing Firms, Their Products and Employment	10
Wage Rates for Selected Occupations	10
Labor Organizations	11
Current and Future Labor Supply	11
Total Personal Income	11
Per Capita Personal Income	11
EDUCATION	13
Public Schools	13
Parochial Schools	13
Vocational Schools	13
Colleges and Universities	14
TRANSPORTATION	15
Rail	15
Truck Service	15
Air	16
Bus	16
Taxi	16
Rental Services	16
POWER AND FUEL	17
Electricity	17
Natural Gas	17
Other Fuels	17
WATER AND SEWERAGE	18
Water	18
Sewerage	19

<u>Chapter</u>	<u>Page</u>
LOCAL GOVERNMENT	21
City	21
County	21
Assessed Value of Property, 1972	21
Local General Property Tax Rates Per \$100 of Assessed Valuation, 1972	21
Planning and Zoning	21
Safety	22
Police	22
Fire	22
Civil Defense	23
Sanitation	23
HEALTH	24
Hospitals	24
Other Medical Facilities	24
Nursing Homes	25
Public Health	25
OTHER LOCAL FACILITIES	27
Communications	27
Library Services	27
Religious Institutions	28
Day Care Centers	28
Financial Institutions	28
Motels	28
Clubs and Organizations	28
RECREATION	30
Local	30
Area	30
AGRICULTURE - NATURAL RESOURCES - CLIMATE	31
Agriculture	31
Natural Resources	31
Climate	31
HISTORY	32

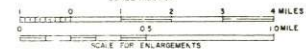


GENERAL HIGHWAY MAP **GRAVES COUNTY** KENTUCKY

PREPARED BY THE
 KENTUCKY DEPARTMENT OF HIGHWAYS
 DIVISION OF PLANNING

IN COOPERATION WITH THE
 U.S. DEPARTMENT OF TRANSPORTATION
 FEDERAL HIGHWAY ADMINISTRATION
 BUREAU OF PUBLIC ROADS

SCALE 1:25000



POLYCONIC PROJECTION

ORIGINAL DATA	1936
REVISIONS	
DATE	BY
1937	1937
1938	1938
1939	1939
1940	1940
1941	1941
1942	1942
1943	1943
1944	1944
1945	1945
1946	1946
1947	1947
1948	1948
1949	1949
1950	1950

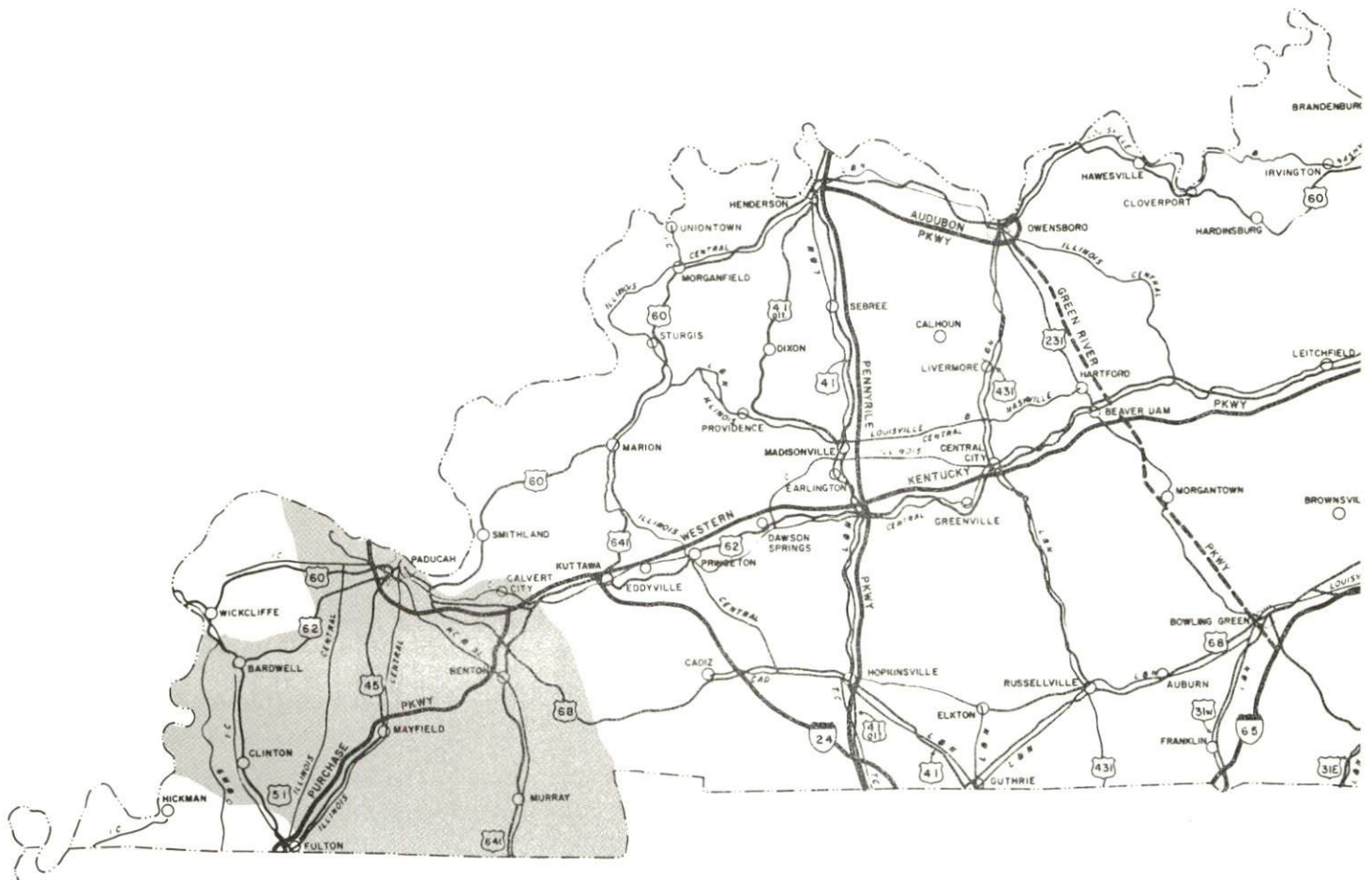




AERIAL VIEW OF MAYFIELD

MAYFIELD LABOR MARKET AREA

Shaded area denotes labor market area



MAYFIELD, KENTUCKY - A RESOURCE PROFILE

Mayfield, the county seat of Graves County, is the geographic center of the eight-county Jackson Purchase Region in the western tip of Kentucky. The 560 square mile rectangular-shaped territory of Graves County is bordered on the south by Tennessee. The county is drained by Mayfield and Obien Creeks and by the West Fork of the Charles River and Bayou de Chien Creek. The land surface is level to gently rolling and the soil fairly fertile.

Mayfield is 142 miles from Nashville, Tennessee, 192 miles from St. Louis, Missouri, and 223 miles from Louisville, Kentucky.

The 1970 population of Mayfield was 10,724 and of Graves County 30,939.

The Economic Framework

Total employment in Graves County averaged 10,810 in 1971 with manufacturing providing 3,490 of these jobs, trade and services 2,595, agriculture 1,330 and government 1,030. From 1961 to 1971 manufacturing employment increased by approximately 33 percent or 900 jobs. Major industrial products are men's clothing, rubber tires, ceramic containers, artificial trees and wreaths, and centrifugal air compressors.

Per capita personal income in 1970 was \$2,888, an increase of 99.4 percent since 1960.

Mayfield is the center of a labor market area that includes Graves and the five adjoining Kentucky counties. Area employment averaged 57,120 including 4,050 in agriculture, 10,000 in government work, 15,100 in trade and services and 13,730 in manufacturing. Area manufacturing employment has increased by approximately 21.5 percent since 1961, with the largest increases occurring in the rubber and machinery industries.

Resources for Growth

1. There is a current estimated labor supply of 13,355 men and 13,125 women available for industrial jobs in the labor market area. By 1978, 7,030 young men and 6,580 young women will become 18 years of age and will be potentially available for industrial jobs in the labor market area. An additional labor supply is available from the adjoining Tennessee counties, Weakley and Henry.

2. The local transportation capacity is excellent. The Illinois Central Gulf Railroad serves Mayfield with a variety of services. The city is easily accessible via the Kentucky Parkway System; interchanges to the Purchase Parkway are located 2 miles north and west of Mayfield. Seven state highways and U.S. Highway 45, which traverse the Purchase area in all directions, connect at Mayfield. In addition to the local airport, facilities for small aircraft are available at both of the nearby state parks. Commercial service is available at Paducah, 25 miles away. Mayfield is within 40 miles of three main inland waterways: the Mississippi, Ohio and Cumberland Rivers, all navigable for barge traffic.

3. Energy - Gas is provided by the Western Kentucky Gas Company. Five distributors of distillate fuel oils and three distributors of propane and butane are located in Mayfield and Paducah, 25 miles away. Electricity, generated by the Tennessee Valley Authority, is provided by the Mayfield Electric and Water Systems. There is an ample supply of raw water from four municipally-owned wells. There is an excess daily capacity of treated water of 1,540,000 gallons.

4. Mayfield has two industrial sites totaling 118.5 acres.

5. Education is an important growth asset for Mayfield. Murray State University, 21 miles distant, is a multi-purpose co-educational institution. The University is organized into six schools. The schools of Applied Science and Technology, Arts and Sciences, Business, Education, Fine Arts and the Graduate School. A community college of the University of Kentucky is located in Paducah, 25 miles away. Three vocational schools, within a radius of 25 miles, offer a total of 42 skill areas and a new vocational school in Mayfield will add 8 skill areas to the present Manpower Program of 5 subjects.

Community Programs for Improvement

Mayfield's designation as a 1969 All Kentucky City is evidence of the city's growth and energetic citizen interest in the community. Among the recent public and private improvements are the following:

1. The Mayfield Shopping Plaza, comprised of 25 units, including a new twin theater recently opened.

2. As a result of a design and improvement study of the downtown area, 52 buildings in Mayfield have been renovated or completely remodeled.

3. The Purchase Parkway was completed in 1968 and U.S. Highway 45 into Mayfield was recently four-laned. In 1971, through county and state efforts, 40 miles of roadway were resurfaced and 32 miles of roadway constructed.

4. The city has completed its third fire station.
5. A \$1.4 million water and sewerage expansion project has just been completed. This project doubled the water plant size and the sewerage treatment capacity doubled the service area, increased the ground storage of water 400,000 gallons and strengthened low flow and pressure areas.
6. A \$350,000 civic center and a new city hall are scheduled for completion by July 1973.
7. The J. U. Kevil Mental Health and Mental Retardation center recently established in a new \$400,000 building, opened its \$240,000 Opportunity Workshop in October 1972.
8. The new \$2.5 million high school in the Mayfield Independent System is scheduled to open in January 1973. The Old Mayfield High School will be renovated, a language lab installed and a third language added to the curriculum at the high school level. The Graves County School system has a pilot program in progress: an additional first grade teacher has been hired in each elementary school in order to teach a special smaller class made up of slow starting first grade students. An extensive renovation project is underway and plans are being formulated for a centralized high school system. The joint Mayfield-Graves County \$700,000 Area Vocational Educational Extension Center will open in September 1973.
9. The development of playground and recreational facilities adjacent to the Purchase Fairgrounds is partially completed. Three mini-parks are planned; one is completed and equipment ordered for the other two.
10. A \$1.5 million extension to the Mayfield Community Hospital is underway. Forty beds will be added in the new building in September 1973 and 40 in September 1974. The X-ray, the physical therapy, and the inhalation departments will be expanded and the operating rooms renovated.
11. A multi-million dollar expansion program at General Tire and Rubber Company will increase employment to 2,100 by August 1973.

Recreation, Entertainment and Livability

Mayfield is located in the center of the Western Waterland, a region of lakes, rivers, streams, forest and parklands. There are over 250 square miles of land devoted to outdoor recreation in the Land Between the Lakes. Within 40 miles of Mayfield are located 4 state parks which offer a variety of activities including a summer theater.

Murray State University, 21 miles southeast of Mayfield, offers collegiate sports excitement and cultural entertainment.

Paducah is 25 miles north of Mayfield and Nashville and Memphis are less than 4 hours driving time, making available additional cultural activities and entertainment media.

Mayfield is the location of:

1. One of the world's largest loose leaf tobacco markets.
2. The world's largest ball clay deposits, used for ceramics and china throughout the world.
3. The annual Purchase District Fair, one of the largest fairs in Kentucky.

THE LABOR MARKET

POPULATION TRENDS ^{1/}

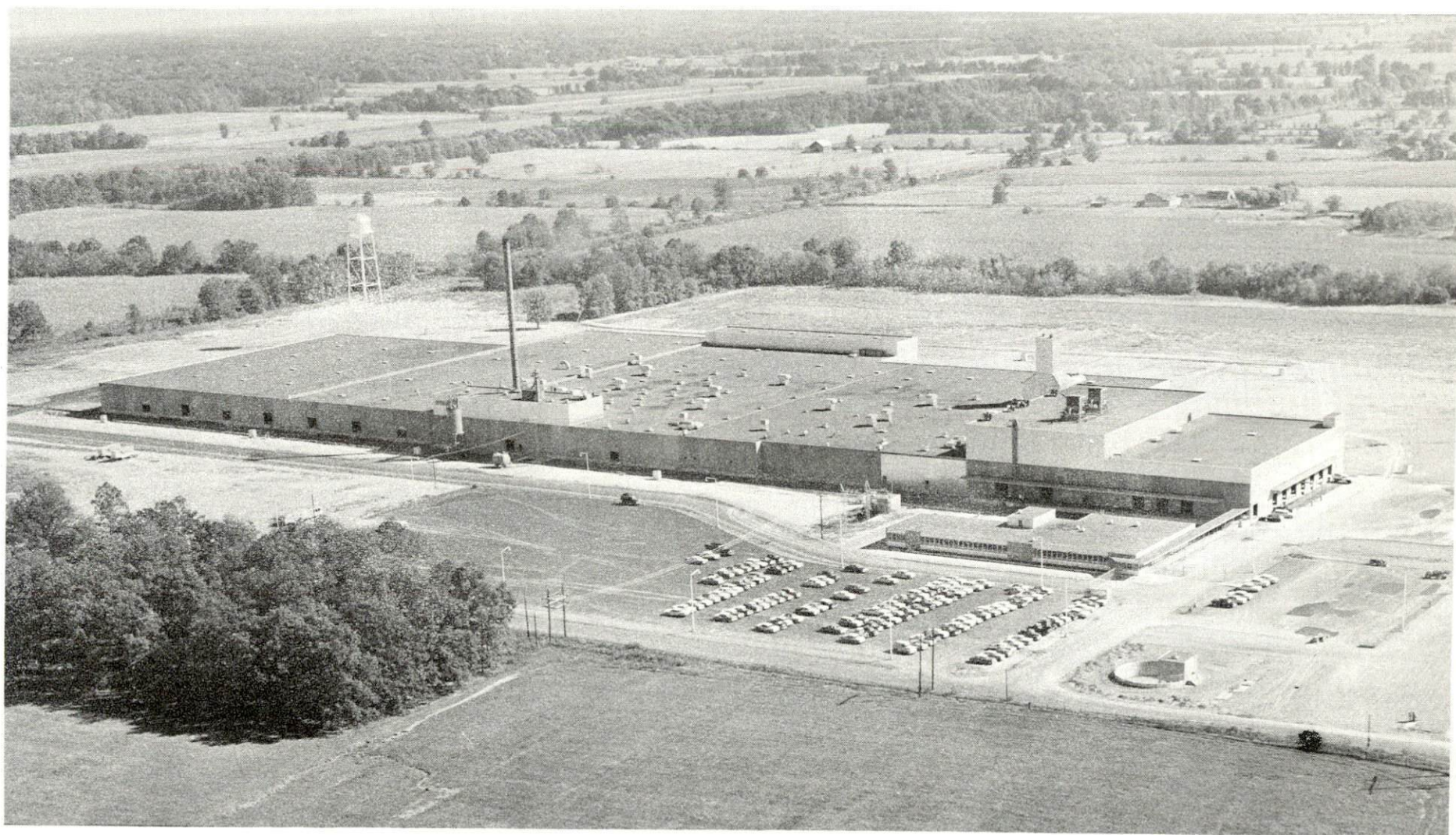
Area	Population			Percent Change	
	1970	1960	1950	1960-70	1950-60
Mayfield	10,724	10,762	8,990	- 0.4	+19.7
Labor Market Area	148,911	137,390	128,019	+ 8.4	+ 7.3
Graves County	30,939	30,021	31,364	+ 3.1	- 4.3
Calloway County	27,692	20,972	20,147	+32.0	+ 4.1
Carlisle County	5,354	5,608	6,206	- 4.5	- 9.6
Hickman County	6,264	6,747	7,778	- 7.2	-13.3
Marshall County	20,381	16,736	13,387	+21.8	+25.0
McCracken County	58,281	57,306	49,137	+ 1.7	+16.6

GENERAL EMPLOYMENT CHARACTERISTICS, 1971 ^{2/}

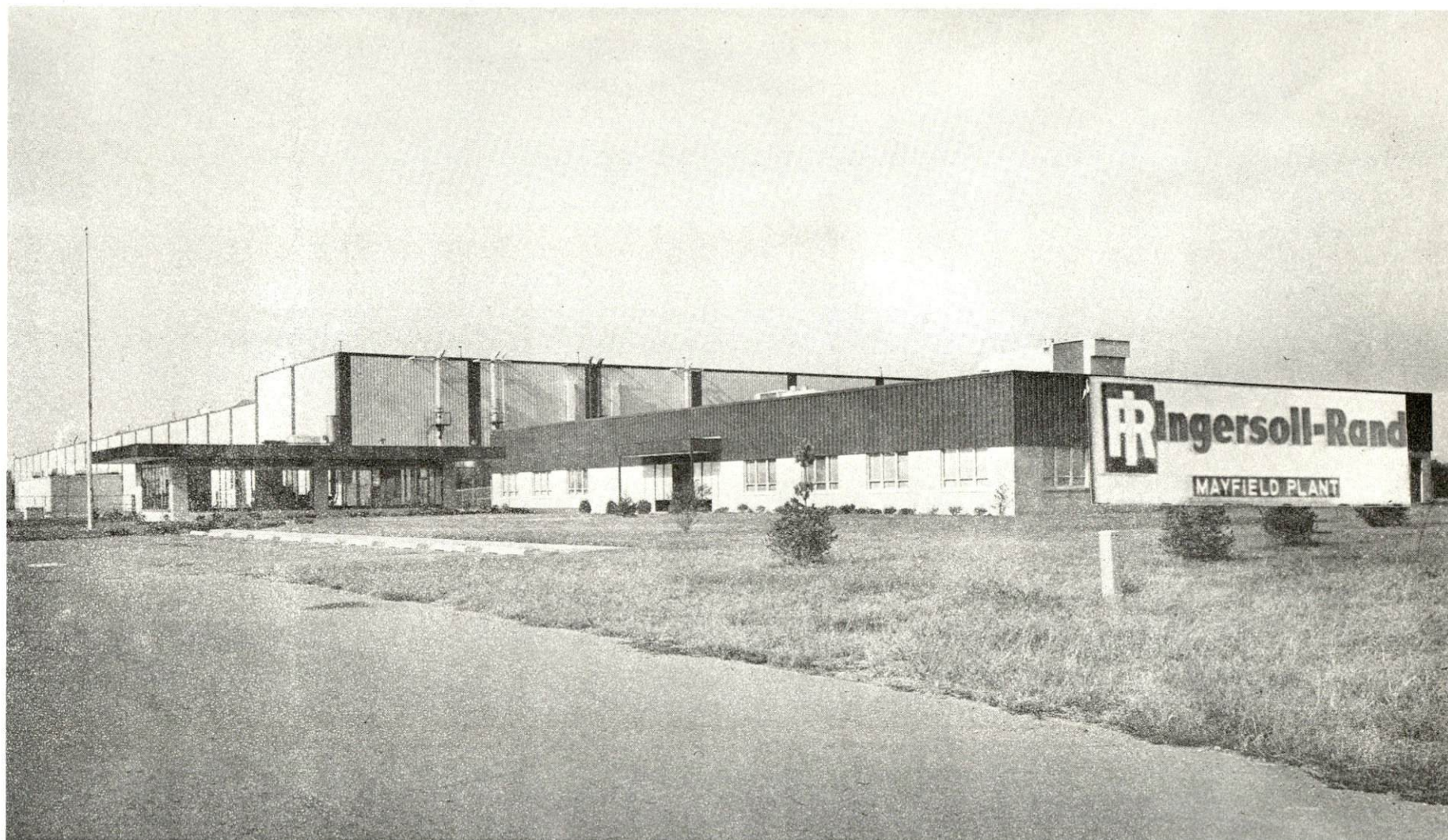
Major Employment Group	Employment	
	Graves County	Labor Market Area
TOTAL	10,810	57,120
Agriculture	1,330	4,050
Nonagriculture	9,480	53,070
Manufacturing	3,490	13,728
Trade and Services	2,596	15,113
Government	1,030	10,030
Other	2,364	14,199

MANUFACTURING EMPLOYMENT TRENDS BY INDUSTRY SEPTEMBER 1971 AND 1961 ^{3/}

Industry	Graves County			Labor Market Area		
	1971	1961	% Change	1971	1961	% Change
TOTAL	3,709	2,792	+ 32.8	13,655	11,235	+ 21.5
Food & Kindred Products	73	237	- 69.2	909	776	+ 17.1
Apparel, Textiles, Leather	737	2,160	- 19.6	3,146	4,282	- 26.5
Lumber, Furniture	21	169	- 87.6	570	320	+ 78.1
Printing, Publishing, Paper	59	54	9.3	335	288	+ 16.3
Chemicals, Petroleum & Coal, Rubber	1,221	0	--	4,623	3,077	+ 50.2
Stone, Clay & Glass	344	145	+137.2	466	265	+ 75.8
Primary Metals	0	0	0	668	589	+ 13.4
Machinery, Metal Products, Equip.	24	0	--	2,598	1,605	+ 61.9
Other	230	27	+751.9	340	33	+930.3



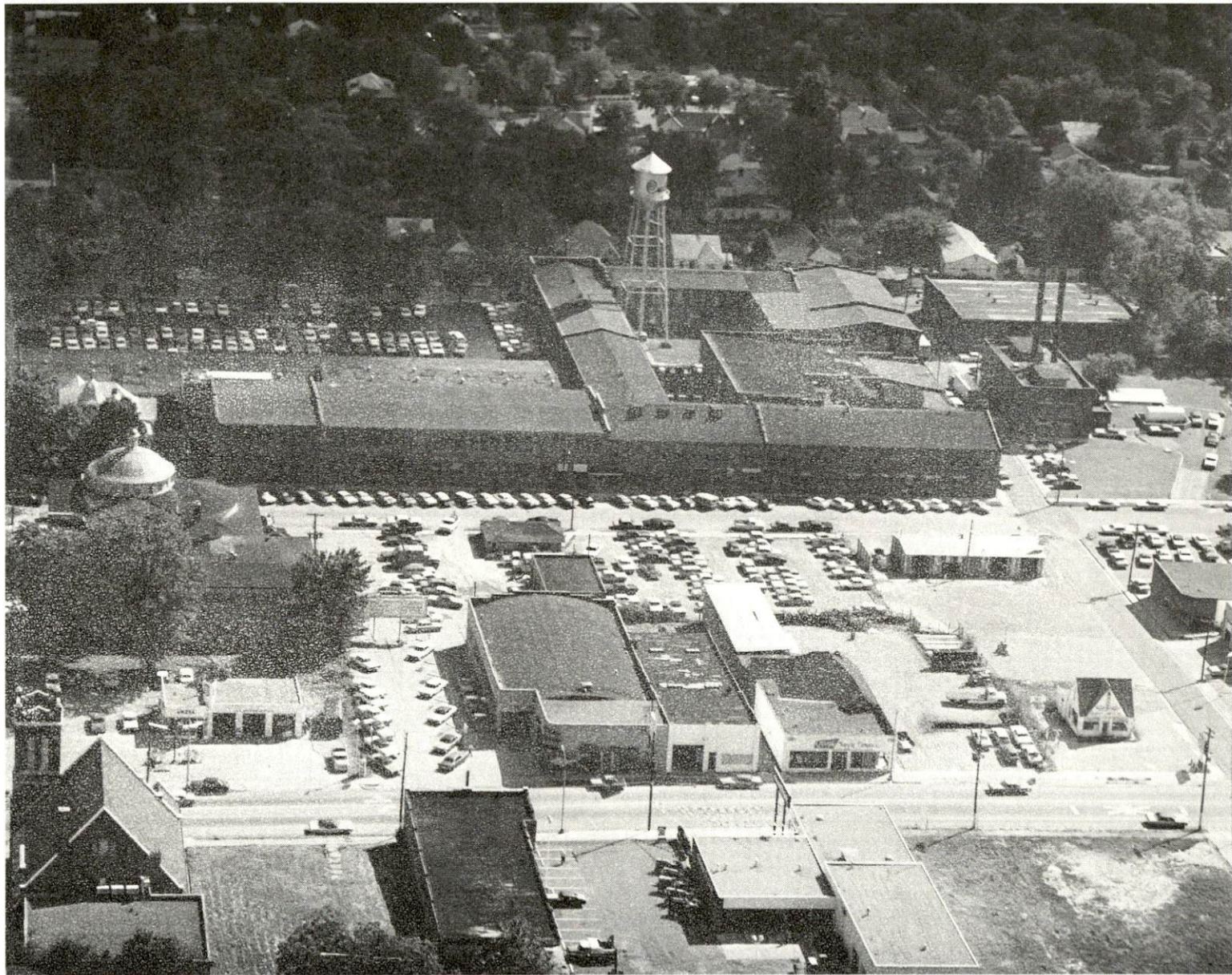
GENERAL TIRE AND RUBBER COMPANY



INGERSOLL-RAND COMPANY



MERIT CLOTHING COMPANY, INC.



CURLEE CLOTHING COMPANY

MAJOR MAYFIELD MANUFACTURING FIRMS,
THEIR PRODUCTS AND EMPLOYMENT ^{4/}

<u>Firm</u>	<u>Product</u>	<u>Employment</u>		
		<u>Total</u>	<u>Male</u>	<u>Female</u>
Andover Clothes, Inc.	Men's clothing	114	18	96
Centac Products Div.				
Ingersoll-Rand Co.	Centrifugal air compressors	150	136	14
Consolidated Novelty Co.	Artificial trees, wreaths	200	50	150
Curlee Clothing Co.	Men's suits, coats	625	90	535
General Tire and Rubber Co.	Tires	1,350		
Merit Clothing Co., Inc.	Men's suits, sport coats, topcoats, slacks	1,460	310	1,150
Roman Ceramics Corp.	Ceramic containers, lamp bases	369	161	208

WAGE RATES FOR SELECTED OCCUPATIONS
MAYFIELD, KENTUCKY ^{5/}

<u>Classification</u>	<u>Wages Per Hour</u>		
	<u>Starting</u>	<u>Maximum</u>	<u>Prevailing</u>
<u>Production Employees</u>			
Assembler	\$1.60	\$3.00	\$2.50
Inspector	1.60	3.25	2.75
Production Laborer	1.60	2.75	2.00
Welder, Arc or Acetylene (Class-A)	1.60	4.25	3.00
<u>Service Employees</u>			
Electrician (Class-A)	1.60	5.00	3.00
Laborer	1.60	3.25	2.25
Machinist	1.60	5.00	3.25
Mechanic, Maintenance	1.60	5.00	3.25
Truck Driver, Industrial (Class-A)	1.60	3.00	2.25
<u>Office Employees</u>			
Bookkeeper	1.60	2.50	2.00
File Clerk	1.60	2.25	1.85
Receptionist	1.60	2.25	1.90
Secretary	1.60	2.25	1.90
Typist	1.60	2.00	1.75

LABOR ORGANIZATIONS

<u>Union</u>	<u>Representing workers at:</u>
United Rubber, Cork, Linoleum and Plastic Workers	General Tire and Rubber Co.
International Brotherhood of Electrical Workers (IBEW)	Greer Neon Co.
Amalgamated Clothing Workers of America	Merit Clothing Co.
International Brotherhood of Teamsters	Dairy Brands, Inc.
International Brotherhood of Pottery and Allied Workers	Roman Ceramics Corp.
International Association of Machinists and Aerospace Workers	Consolidated Novelty Co.

CURRENT AND FUTURE LABOR SUPPLY - MAYFIELD LABOR MARKET AREA

<u>Area</u>	<u>Current Labor Supply, 1972^{6/}</u>			<u>Future Labor Supply by 1978^{7/}</u> <u>(Becoming 18 Years of Age)</u>		
	<u>Total</u>	<u>Male</u>	<u>Female</u>	<u>Total</u>	<u>Male</u>	<u>Female</u>
Labor Market Area	26,482	13,355	13,127	13,613	7,033	6,580
Graves	5,082	2,933	2,149	2,757	1,426	1,331
Calloway	8,086	4,565	3,521	1,938	969	969
Carlisle	1,210	604	606	487	237	250
Hickman	970	519	451	575	307	268
Marshall	3,584	1,530	2,054	2,088	1,087	1,001
McCracken	7,550	3,204	4,346	5,768	3,007	2,761

TOTAL PERSONAL INCOME^{8/}

<u>Area</u>	<u>1970</u>	<u>1960</u>	<u>% Change</u>
Graves County	\$ 87,161,000	\$ 43,479,000	+100.5
Labor Market Area	456,840,000	212,235,000	+115.3
Kentucky	9,719,647,000	4,779,695,000	+103.4

PER CAPITA PERSONAL INCOME^{9/}

<u>Area</u>	<u>1970</u>	<u>1960</u>	<u>% Change</u>
Graves County	\$2,888	\$1,448	+ 99.4
Labor Market Area			
Range	\$2,200 to 3,924	\$1,221 to 1,747	N. A.
Kentucky	3,019	1,573	+ 91.9



MAYFIELD JUNIOR HIGH SCHOOL



EAST COLLEGE ELEMENTARY SCHOOL

EDUCATION

Public Schools

	<u>Mayfield Independent</u>	<u>Graves County</u>
Total Enrollment	2,129	4,269
Elementary	1,234	3,071
Middle School	186	--
High School	709	1,198
Student-Teacher Ratio	21-1	23-1
Elementary	21-1	27-1
Middle School	27-1	--
High School	20-1	16-1
State Rating of High School	Standard (1)	Basic (7)
Other Accreditations	Southern Association of Colleges and Schools	
Percent High School Graduates to College	76.6	46.8
Current Expenditures Per Pupil	\$529.68	\$438.07
Bonded Indebtedness, June 30, 1972	\$3,461,000	\$555,000

Parochial School

Total Enrollment	89
Elementary	89
Student-Teacher Ratio	20-1
Elementary	20-1

Vocational Schools

Nearest Area Vocational Education Centers

	Murray Area Vocational Education Center	Tilghman Area Vocational Education Center
Location	Murray	Paducah
Miles Distant	21 miles	25 miles
Curriculum	Clerical Secretarial	Marketing and Distributive Education

(Murray curriculum contd.) (Tilghman curriculum contd.)

Marketing and	Health Careers, Nurse Aide
Distributive Education	Practical Nursing
Appliance Repair	Surgical Technician
Auto Body Repair	Ward Clerk
Auto Mechanics	Electronics (Communications)
Carpentry	Highway Technology
	Air Conditioning and
	Refrigerator Appliance
	Repair
	Auto Body Repair
	Auto Mechanics
	Carpentry, Drafting
	Cosmetology, Electricity
	Machine Shop, Welding
	Service Station Attendant
	Small Engine Repair

Nearest State Vocational Technical School

	Western Kentucky State Vocational
	Technical School
Location	Paducah
Miles Distant	25 miles
Curriculum	Accounting Jr. Management
	Clerical, Secretarial, Learning Lab
	Electronics (Communications)
	Auto Body Repair, Auto Mechanics
	Barbering, Tailoring, Carpentry, Drafting
	Commercial Foods, Cosmetology
	Electricity, Masonry

Colleges and Universities

	<u>Area - Within 50 miles</u>		<u>Highest Degree</u>
	<u>Location</u>	<u>Enrollment</u>	<u>Conferred</u>
Murray State University	Murray	7,257	Masters
Paducah Community College	Paducah	1,162	Associate

TRANSPORTATION

Rail

Line serving Mayfield - Illinois Central Gulf Railroad

Services - Freight, switching facilities, siding space, nearest piggyback facilities in Fulton, 19 miles distant, and Paducah, 25 miles distant, REA pickup and delivery from Paducah

RAILWAY TRANSIT TIME FROM MAYFIELD, KENTUCKY, TO: ^{10/}

No. of Days		No. of Days	
City	CL	City	CL
Atlanta, Ga.	3	Los Angeles, Calif.	5-6
Birmingham, Ala.	1 1/2	Louisville, Ky.	2
Chicago, Ill.	2	Nashville, Tenn.	2 1/2
Cincinnati, Ohio	3	New Orleans, La.	2 1/2
Cleveland, Ohio	4	New York, N. Y.	5
Detroit, Mich.	3 1/2	Pittsburgh, Pa.	4
Knoxville, Tenn.	3	St. Louis, Mo.	3

Truck Service

Company

Home Office

A & H Truck Line, Inc.	Evansville, Indiana
Henry Edwards Trucking Co.	Clinton, Kentucky
Harper Truck Service, Inc.	Paducah, Kentucky
McLean Trucking Co.	Winston-Salem, North Carolina
Paschall Truck Lines, Inc.	Murray, Kentucky
Spector Freight System, Inc.	Chicago, Illinois
T. I. M. E. - D. C., Inc.	Lubbock, Texas

HIGHWAY MILES AND TRUCK TRANSIT TIME IN DAYS FROM MAYFIELD, KENTUCKY, TO SELECTED MARKET CENTERS

Delivery				Delivery			
Highway Time ^{11/}				Highway Time			
City	Miles	LTL	TL	City	Miles	LTL	TL
Atlanta, Ga.	391	3	2	Los Angeles, Calif.	1,950	5	5
Birmingham, Ala.	329	3	3	Louisville, Ky.	223	1	1
Chicago, Ill.	420	3	3	Nashville, Tenn.	142	1	1
Cincinnati, Ohio	323	3	3	New Orleans, La.	514	4	4
Cleveland, Ohio	575	3	3	New York, N. Y.	992	5	5
Detroit, Mich.	608	4	4	Pittsburgh, Pa.	617	4	4
Knoxville, Tenn.	327	3	3	St. Louis, Mo.	192	1	1

Air

	<u>Local</u>	<u>Nearest Commercial</u>
Location:	Mayfield-Graves County 3 1/2 miles east, north- east of Mayfield	Barkley Field Paducah, Kentucky 25 miles north of Mayfield
Runways:	1 paved	2 paved
Length:	3,300 feet	6,500 feet, 4,000 feet
Traffic		
Control:	Wind sock	Wind tee
Lighting:	Sunset to sunrise	Beacon, boundary, obstruction runway lights and runway end identification lights
Services:	80 and 100 octane, taxi, telephone, charter service, fixed base operator	80 and 100 octane; jet fuel; Delta and Ozark Airlines; taxi, limousine, U-Drive- It; storage; major A & E repairs

Bus

Southern Greyhound Bus Lines
Brooks Bus Line
Western Kentucky Stages

Taxi

24-hour service, 3 radio dispatched cars

Rental Services

Trailer and truck rentals are available

POWER AND FUEL

Electricity

Company serving Mayfield - Mayfield Electric and Water System
Source of power - Tennessee Valley Authority
Total generating capacity - 19,400,000 KW
Industrial rates furnished by - Mayfield Electric and Water System,
301 East Broadway, Mayfield, Kentucky

Company serving Graves County - (1) Hickman-Fulton RECC; (2) Jackson Purchase RECC; (3) West Kentucky RECC
Source of power - (1) TVA; (2) Kentucky Utilities Company; (3) TVA
Total generating capacity - TVA - 19,400,000 KW, Kentucky Utilities Company - 1,215,000 KW
Industrial rates furnished by - (1) Hickman-Fulton RECC, Hickman, Kentucky; (2) Jackson Purchase RECC, Paducah, Kentucky; (3) West Kentucky RECC, Mayfield, Kentucky

Natural Gas

Company serving Mayfield - Western Kentucky Gas Company
Source of supply - Texas Gas Transmission Company
Size of transmission mains - 26 and 30 inches (supplier); 2, 3 and 6 inches (distributor)
Distribution mains - 2, 3, 4, and 6 inches
Distribution pressure - 25 psi
Btu content - 1,011
Specific gravity - .60
Rates - May be obtained from Western Kentucky Gas Company, 212 East Broadway, Mayfield, Kentucky

Other Fuels

Propane and butane - 3 distributors: Signal LP, Mayfield; Ohio Valley Gas Company, Mayfield; Ken Gas, Paducah, 25 miles away

Fuel Oils - 5 distillate fuel oil distributors all with bulk stations: Standard, Texaco, Gulf - Mayfield, Kentucky; Sinclair, Phillips 66 - Paducah, Kentucky, 25 miles away

Residual fuel oil - Arrangements must be made with the refinery

Low sulphur content coal - Available in Kentucky

WATER AND SEWERAGE

Water

Company serving Mayfield - Mayfield Electric and Water System

Source - 4 deep wells

Treatment plant capacity - 3,100,000 gpd

Average daily consumption - 1,230,000 gallons

Peak daily consumption - 1,560,000 gallons

Type treatment - Flash mixing of lime and fluoride, chlorination

Storage capacity - 1,240,000 gallons

Size mains - 2 through 12 inches

Average pressure - 65 psi

Average temperature - 56° F.

MONTHLY WATER RATES FOR WHOLESALE AND INDUSTRIAL CONSUMERS

WITHIN THE CITY (All Meter Sizes):

First	2,000 gallons	\$2.10 (Minimum)
Next	3,000 gallons	.98 per M gallons
Next	5,000 gallons	.83 per M gallons
Next	15,000 gallons	.64 per M gallons
Next	25,000 gallons	.45 per M gallons
Next	50,000 gallons	.30 per M gallons
Next	100,000 gallons	.27 per M gallons
Next	100,000 gallons	.24 per M gallons
Next	200,000 gallons	.21 per M gallons
Next	500,000 gallons	.18 per M gallons
Next	1,000,000 gallons	.15 per M gallons

OUTSIDE THE CITY (All Meter Sizes):

Consumers and users served outside the corporate limits of the city of Mayfield shall pay a rate 50% above the rates charged within the corporate limits.

MINIMUM CHARGES: (Based upon the size of meter used)

	<u>Within the Corporate Limits:</u>	<u>Outside the Corporate Limits:</u>
Under 1" Meter	\$ 2.10	\$ 3.15
1" to 1-3/4" Meter	4.50	6.75
2" Meter	15.00	22.50
3" Meter	30.00	45.00
4" Meter	45.00	67.50
6" Meter	105.00	157.50

FIRE HYDRANT RATE:

\$3.00 per month per hydrant.

SPRINKLER SYSTEM RATES:

4" Connection - Under 600 Heads \$72.00 per Year
2 cents per head per year for additional heads over 600

6" Connection - Under 600 Heads \$90.00 per Year
2 cents per head per year for additional heads over 600

8" Connection - Under 600 Heads \$144.00 per Year
2 cents per head per year for additional heads over 600

Surface water sources - Obion and Mayfield Creeks and West Fork
of Clarks River

Average discharge - Obion Creek at Pryorsburg 37.6 cfs, (19 years,
USGS); Mayfield Creek at Lovelaceville (neighboring Carlisle County)
232 cfs (32 years, USGS)

Expected ground water yield - 500 to 1,000 gpm over entire county

Sewerage

Company service Mayfield - Mayfield Electric and Water System

Design capacity - 2,300,000 gallons per day

Average daily flow - 1,100,000 gallons

Treatment - Primary and Secondary

Type treatment - Activated sludge, anaerobic digester, final sludge
disposal

Treated effluent discharged into - Red Duck Creek, tributary of
Mayfield Creek

Size of sanitary mains - 6 through 24 inches

Size of storm mains - 6 to 42 inches

WITHIN THE CITY:

65% of the monthly water bill based on water rates, or a minimum charge of \$1.50 per month, whichever is the greater.

OUTSIDE THE CITY:

65% of the monthly water bill based on water rates, or a minimum charge of \$2.25 per month, whichever is the greater.

LOCAL GOVERNMENT

City

Structure - Mayor - 4-year term; 12 councilmen - 2-year terms
Estimated Budget 1972-73 - General Fund \$812,633.00
Budget 1971-72 - Water and Sewer Fund \$225,535.19; Electric
Fund \$1,250,536.98
Fees and licenses - Occupational license tax one percent of gross
business receipts; earnings tax one percent deducted from payroll

County

Structure - County Judge - 4-year term; 3 commissioners - 4-year
terms
Budget 1972-73 - General Fund \$312,124.00; Road Fund \$111,900.00

Assessed Value of Property, 1972

<u>Classes of Property</u> *	<u>Mayfield</u>	<u>Graves County</u>
Real Estate	\$47,013,077	\$113,226,510
Tangibles	18,011,408	18,832,692
Public Service	3,939,012	18,694,194

Local General Property Tax Rates Per \$100 of Assessed Valuation, 1972 12/

<u>Taxing Unit</u> **	<u>Mayfield</u>	<u>Graves County</u>
State	\$.015	\$.015
County	.106	.106
School	.890	.338
City	.340	
Total	\$1.351	\$.459

Planning and Zoning

Agency - Mayfield Planning Commission

Plans Completed

Subdivision Regulations
Zoning Ordinance(Regulation) (Order)
Park and Recreation Study
Population and Economic Study
Fringe Area Study

*Property assessed at 100 percent of fair value.

**Manufacturing machinery, raw materials inventories and goods in process
inventories are not subject to local tax. State rate is only \$.15 per \$100.

(Planning and Zoning cont'd)

Commercial Area Study
Parking Study
Public Improvements Study
Capital Improvements Budget

Codes Adopted

Building Code
Housing Code
Plumbing Code
Electric Code
Fire Code
Basic Water and Sewer

Other Program - Public Housing

Safety

Police

Mayfield

Graves County

Total staff	33	5
Radio-patrol cars	3	3
Other equipment	1 walkie talkie	

Fire

American Insurance

Association Fire Rating	6	
Full-time staff	34	
Volunteers	24	
Equipment:		
1,000 gpm pumper and 75 ft. ladder truck	1	
750 gpm pumpers	3	
500 gpm pumper	1	

Other:

Jeep with 100 gpm pumper	1	
Ambulances	3	
Safety Net	1	

Note: Mayfield Fire Department serves manufacturing firms in the county and provides ambulance service for the entire county.

Civil Defense

Mayfield Graves County Rescue Squad:

Number of volunteers - 24

Equipment - fire truck with 1,200 gallon capacity, fire truck with 1,000 gallon capacity, ambulance, weapon car (4 x 4) truck which pulls a generator

Personnel training - fire fighting

Sanitation

Mayfield

Type service

Private

Fee charged:

residential

\$2.50 monthly

business

negotiated by contract

Collection frequency:

residential

Twice weekly

business

Varies, some businesses

are served daily

Trash pickup

Twice weekly

Disposal method

Landfill

Private service available in area immediately surrounding Mayfield.

HEALTH

Hospitals

<u>General Hospital</u>	<u>Location</u>	<u>Beds</u>
Community Hospital	Mayfield	76
Mayfield Hospital and Clinic	Mayfield	38

Community Hospital

General hospital facilities - 2 operating rooms, delivery room, emergency room, 6-bed coronary care unit, 10 bassinets, physical therapy department

Medical staff - 14 doctors, 22 registered nurses, 31 licensed practical nurses, 1 pathologist, 1 physical therapist, 1 inhalation therapist, 1 ADA dietitian, 1 radiologist

Mayfield Hospital and Clinic

General hospital facilities - operating room, delivery room, emergency room, laboratory, nursery, infant isolette

Medical staff - 3 doctors, 5 registered nurses, 6 graduate licensed practical nurses, 4 licensed practical nurses

Other Medical Facilities

Fuller-Gilliam Clinic

Facilities - X-ray, laboratory, emergency room

Medical staff - 3 doctors

J. U. Kevil Mental Health and Mental Retardation Center

Mental Health Division

Services - Outpatient, 24 hour service, psychiatric services, counseling available to residents of the Congressional District

Staff - 1 part-time psychiatrist, 2 part-time psychologists, 1 psychiatric social worker, mental health registered nurse, arts and crafts director, mental retardation consultant, 1 drug and alcohol consultant.

Mental Retardation Division

Services - Day careclasses, trainable classes, opportunity workshop classes for adults and children

Staff - Director, part-time speech therapist, social worker, 2 teachers, 4 teachers' aides, 2 teachers (County Board of Education employees), workshop manager, 3 supervisors, rehabilitation coordinator, basic education teacher, vocational adjustment teacher

Nursing Homes

	<u>Number</u>	<u>Beds</u>
Personal care home	6	332

Public Health

Facility - Graves County Health Department

Staff - 3 sanitarians, 4 nurses (two registered nurses and two licensed practical nurses), 2 clerks, 1 administrator, 1 dental clinician (part-time), 1 medical clinician (part-time)

Budget 1972-73 - \$95,557



MAYFIELD - GRAVES COUNTY LIBRARY

OTHER LOCAL FACILITIES

Communications

Telephone - Mayfield - South Central Bell Telephone Company
Graves County - West Kentucky Telephone Cooperative
Corporation
Services - Standard

Telegraph - Western Union Telegraph Company
Services - Office, telephone, messenger

Postal - U. S. Post Office
Class - 1
Mail received - 5 times daily
Mail dispatched - 4 times daily

Newspapers - Mayfield Messenger
Daily and circulation - Daily except Sunday - 7,200
Other papers received from - Louisville, Kentucky; Nashville, Tennessee;
Chicago, Illinois; Western Edition of the Wall Street Journal

Radio - WNGO-AM and FM
Stations received from - 15 stations located within 100-mile radius

Television -
Cable Service
Reception from - Paducah, Kentucky; Nashville and Memphis,
Tennessee; Cape Girardeau, Missouri; Harrisburg, Illinois
Kentucky Educational Television - Murray transmitter, Channel 21

Library Services

Public Libraries - Mayfield-Graves County Library
Size collection - 40,000 volumes
Circulation, 1971 - 95,000
Services - Bookmobile, periodicals, films, pictures, records, athletic
equipment lending, story hours, scheduled visits for schools, children's
films, art classes
Special collections - Civil War and Kentucky history

Religious Institutions

Number of churches - 34

Denominations - Assembly of God, Baptist, Christian, Christian Scientist, Church of Christ, Church of God, Church of the Nazarene, Episcopal, Gospel Mission, Holiness Church, Holiness to God, Jehovah's Witnesses, Methodist, Pentecostal Holiness, Presbyterian, Roman Catholic, Seventh Day Adventist

Nearest Synagogue - Paducah

Congregation - Temple Israel (reformed)

Day Care Centers

Mayfield has 3 centers. One of these is for the children of Curlee Manufacturing employees

Financial Institutions

<u>Banks</u>	<u>Statement as of June 30, 1972</u>	
	<u>Assets</u>	<u>Deposits</u>
Liberty Savings Bank	\$26,718,415.26	\$23,420,704.52
First National Bank	18,958,420.29	15,608,802.45
Exchange Bank	8,613,374.32	7,439,423.65
<u>Savings and Loan Associations</u>	<u>Assets</u>	<u>Shared Accounts</u>
First Federal Savings and Loan Association	\$24,946,516.31	\$23,218,448.86
Security Federal Savings and Loan Association	5,043,428.45	4,551,793.32

Motels

Total Number - 5

Units - 237

Clubs and Organizations

Business and Civic - Mayfield-Graves County Chamber of Commerce, Retail Merchants Association, Kiwanis, Lions, Rotary, Key Club, Optimist Club

Fraternal - American Legion, VFW, Moose, Masonic, Odd Fellows,
Disabled American Veterans, Woodsmen of the World

Women's - Business & Professional Women's Club, Mayfield Woman's
Club, Community Woman's Club, Laurel Oaks Garden Club, Hospital
Auxiliary, Emblem Club, Mayfield Council of Club Women, Junior
Welfare League

Youth - Boy Scouts, Girl Scouts, FFA, FHA

Other - Cardinal Club (Booster), Mayfield Music Club, Newcomers
Club, Senior Citizens Club, Welcome Wagon

RECREATION

Local

Public Recreation Facilities

Supervised program - Summer and Winter - Mayfield Playground and Recreation Board

Parks - 4, 3 mini-parks

Playgrounds - 5

Tennis courts - 4

Baseball diamonds - 5

Football fields - 2

Other - Adult softball field, stadium, fairgrounds

Private Recreation Facilities

Country clubs - 2

Golf courses - 1 (18-hole), 1 (9-hole)

Swimming pools - 2

Movie theaters - 3 indoor cinemas, 1 drive-in

Bowling lanes - 2

Tourist Attractions

Wooldridge Monuments

Annual Purchase District Fair

Area (Within 40 miles)

Parks and Waterways - Kenlake State Resort Park, Kentucky Dam Village State Resort Park, Land Between the Lakes National Recreation Area, Columbus-Belmont Battlefield State Park, Lake Barkley State Resort Park, Tennessee and Mississippi Rivers

Events and Special Attractions - Annual Kentucky Lake Fall Fishing Derby, Summer Outdoor drama at Kenlake Resort Park, Summer Festival in Paducah, Governor's Cup Regatta, Watkins Cup Regatta, Benton Tater Day (only event honoring the sweet potato), Marshall County Fishing Derby, International Banana Festival at Fulton, Septemberfest at Kentucky Dam Village, Alben W. Barkley Monument and Museum at Paducah, Ancient Buried City at Wickliffe and the Calvert City Auto Museum

AGRICULTURE - NATURAL RESOURCES - CLIMATE

Agriculture 13/

	<u>Graves County</u>	<u>Labor</u> <u>Market Area</u>
Total land area (acres)	358,336	1,240,064
Percent of area in farm land	72	65.9
Number of farms	2,280	6,896
Average size of farms (acres)	113.1	118.4
1969 value of all farm products	\$13,275,484	\$ 41,099,217
Value per farm	5,822	5,960
Total crop sales	5,681,521	17,261,476
Total livestock & livestock products	7,559,579	23,676,515
1970 agricultural production included:		
Burley tobacco (lbs.)	444,000	2,169,000
Corn (bu.)	1,054,000	3,238,000
Cattle and calves (number)	36,100	144,700
Hogs and pigs (number)	50,000	145,600
Milk production, 1969 (lbs.)	36,720,000	100,380,000

Natural Resources

Principal mineral resources	Ball clay
Other mineral resources	Sand and gravel
Acres of commercial forest land	80,200
Most abundant tree species	Red oaks, white oaks, hickories, sweetgum, cottonwood, ash, hard maple

Climate 14/

	<u>Graves County</u>
Temperature	
Annual mean (30-year record)	59.6 degrees
Average annual 1971	59.5 degrees
Record highest, July, 1954 (29-year record)	104 degrees
Record lowest, January, 1963 (29-year record)	- 5 degrees
Seasonal heating degree days (30-year record)	3,821
Precipitation	
Mean annual total (30-year record)	45.23 inches
Mean annual snow and sleet (29-year record)	10.0 inches
Total precipitation 1971	41.29 inches
Mean number days precipitation, (.01 inch or more) (29-year record)	114
Average number days thunderstorms (22-year record)	53
Prevailing winds (29-year record)	Southwest

HISTORY

Graves County lies in the western tip of Kentucky in the Jackson Purchase Region. It has 560 square miles of territory in a rectangular formation and is bordered to the south by Tennessee.

The first settler in the area, John Anderson, built a log house at present-day Mayfield in 1819. Other settlers soon joined him, and within four years enough people had come for a new county to be formed. Graves became Kentucky's seventy-fifth county in 1823, its territory taken from Hickman County. It was named for Major Benjamin Graves, a Virginia native who came to Kentucky, was elected to the State Legislature and died in the War of 1812.

Mayfield, the county seat, lies near the geographical center of the county and is named for Mayfield Creek, on which it is located. The first courthouse was erected here in 1824. A progressive community which was designated an All Kentucky City in 1969, Mayfield had a 1970 population of 10,724.

In 1830, Graves County had 2,504 inhabitants. The population had reached 31,364 by 1950, followed by a slight decline to 30,021 in 1960. There was a slight increase during the 1960's to 30,939 in 1970.

Agriculture provided 1,330 of the county's 10,810 jobs in 1971, with burley tobacco, corn, cattle, milk and hogs the most important products. Various fruits and berries are also produced in large quantities. Manufacturing employment grew to 3,709 in 1971, with the greatest production in the apparel and rubber industries. Largest of Mayfield's 26 firms are Merit Clothing Company, which employs some 1,400 persons making men's suits, Curlee Clothing Company, General Tire and Rubber Company, Roman Ceramics Corporation, which makes ceramic containers and Ingersoll-Rand, which produces centrifugal air compressors.

Mayfield is a loose leaf tobacco market of major importance and has the world's largest deposit of ball clay, which is used to make china and ceramics. A major transportation artery, the Purchase Parkway, bisects Graves County from northeast to southwest, passing near Mayfield.

SOURCES OF INFORMATION

- 1/ U. S. Department of Commerce, Bureau of the Census, Census of Population, 1950, 1960, 1970.
- 2/ Kentucky Department of Economic Security, Division of Research and Statistics.
- 3/ Kentucky Department of Economic Security, Number of Workers in Manufacturing Industries Covered by Kentucky Unemployment Insurance Law Classified by Industry and County, September 1971 and 1961.
- 4/ Kentucky Department of Commerce, Division of Research and Planning.
- 5/ Kentucky Department of Economic Security, Division of Employment Services, Mayfield Office.
- 6/ Kentucky Department of Economic Security, Kentucky Labor Supply Estimates by County, January 1972.
- 7/ Kentucky Department of Commerce, Future Labor Supply by 1978.
- 8/ University of Kentucky, Office of Development Services and Business Research, Total Personal Income for Kentucky.
- 9/ University of Kentucky, Office of Development Services and Business Research, Per Capita Income in Kentucky.
- 10/ Illinois Central Railroad, North 12th., Mayfield, Kentucky
- 11/ Paschall Truck Lines, Inc., Route #4, Murray, Kentucky
- 12/ Kentucky Department of Revenue, Kentucky Property Tax Rates, 1971.
- 13/ U. S. Department of Commerce, Bureau of the Census, Census of Agriculture, 1969. U. S. Department of Agriculture and Kentucky Department of Agriculture, Kentucky Agricultural Statistics, 1971.
- 14/ U. S. Department of Commerce, Environmental Science Services Administration, Climatological Data, 1971.

All other information was obtained from governmental offices, local businesses and organizations.

This copy has been prepared by the Kentucky Department of Commerce,
Division of Research and Planning, and the cost of printing paid from
state funds.