

1974

Industrial Resources: Grayson County - Leitchfield

Kentucky Library Research Collections
Western Kentucky University, spcol@wku.edu

Follow this and additional works at: https://digitalcommons.wku.edu/grayson_cty

 Part of the [Business Administration, Management, and Operations Commons](#), [Growth and Development Commons](#), and the [Infrastructure Commons](#)

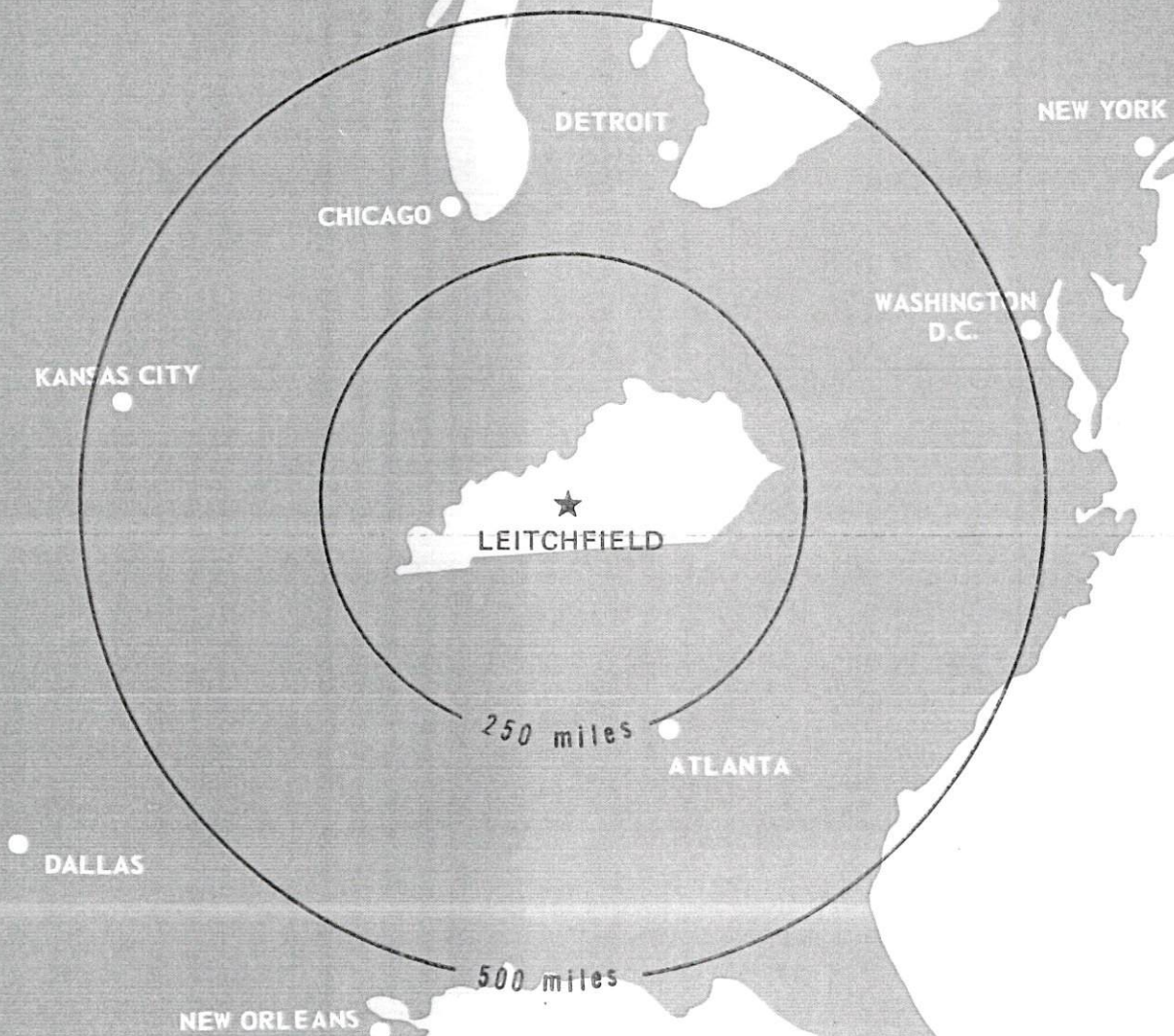
Recommended Citation

Kentucky Library Research Collections, "Industrial Resources: Grayson County - Leitchfield" (1974). *Grayson County*. Paper 11.
https://digitalcommons.wku.edu/grayson_cty/11

This Report is brought to you for free and open access by TopSCHOLAR®. It has been accepted for inclusion in Grayson County by an authorized administrator of TopSCHOLAR®. For more information, please contact topscholar@wku.edu.

INDUSTRIAL RESOURCES

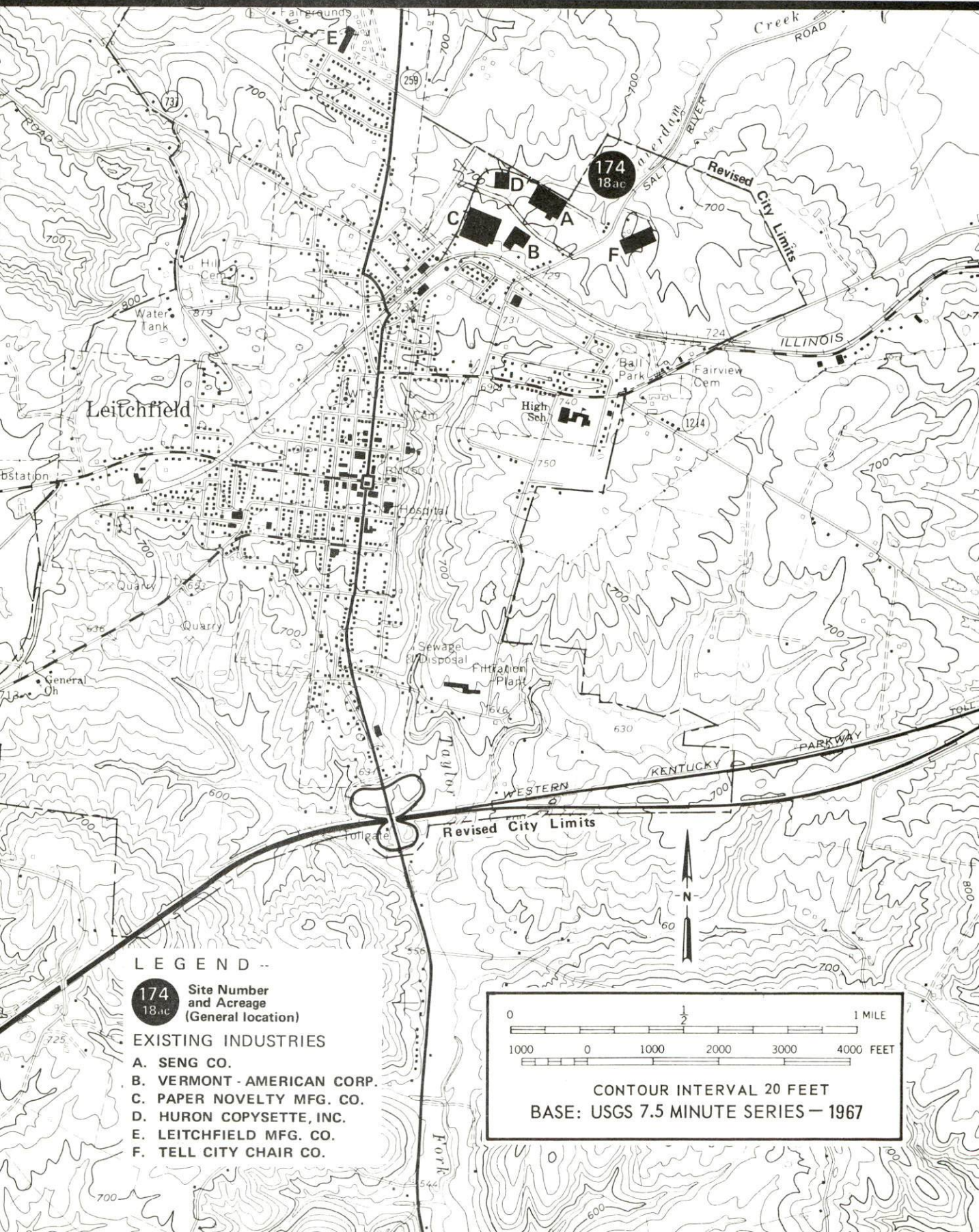
LEITCHFIELD KENTUCKY



GRAYSON COUNTY, KENTUCKY

LEITCHFIELD, KENTUCKY -- Index to Industrial Sites -- 1974

For detailed site data contact Mr. Kenneth Goff, Leitchfield, Kentucky 42754 or the Kentucky Department of Commerce, Capital Plaza Tower, Frankfort, Kentucky 40601

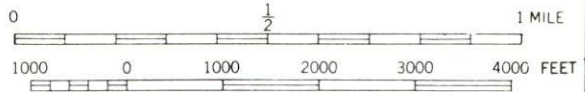


LEGEND --

174 Site Number
18.ac and Acreage
(General location)

EXISTING INDUSTRIES

- A. SENG CO.
- B. VERMONT-AMERICAN CORP.
- C. PAPER NOVELTY MFG. CO.
- D. HURON COPYSETTE, INC.
- E. LEITCHFIELD MFG. CO.
- F. TELL CITY CHAIR CO.



CONTOUR INTERVAL 20 FEET
BASE: USGS 7.5 MINUTE SERIES -- 1967

INDUSTRIAL RESOURCES
LEITCHFIELD, KENTUCKY

Prepared by
The Kentucky Department of Commerce
in cooperation with
The Leitchfield-Grayson County Chamber of Commerce

1974

This copy has been prepared by the Kentucky Department of Commerce,
Division of Research and Planning, and the cost of printing paid from
state funds.

TABLE OF CONTENTS

<u>Chapter</u>	<u>Page</u>
INDUSTRIAL SITES	i
LEITCHFIELD, KENTUCKY - A RESOURCE PROFILE	1
THE LABOR MARKET	6
Population Trends	6
General Employment Characteristics, 1972	6
Manufacturing Employment Trends by Industry.	7
Leitchfield Manufacturing Firms, Their Products and Employment.	7
Wages	11
Labor Organizations	12
Estimated Male Labor Supply	12
Estimated Female Labor Supply	13
Per Capita Personal Income	13
TRANSPORTATION	14
Rail	14
Truck Service	14
Air	15
Bus	15
Taxi.	15
POWER AND FUEL	16
Electricity	16
Natural Gas	17
Other Fuels	17
WATER AND SEWERAGE	18
Water	18
Sewerage	19
LOCAL GOVERNMENT	20
City	20
County.	20

2/28/75

<u>Chapter</u>	<u>Page</u>
Assessed Value of Property, 1973	20
Property Taxes	20
Local Property Tax Rate Per \$100 of Assessed Valuation, 1973	21
Utilities Gross Receipts Tax for Schools	21
Planning and Zoning	21
Safety.	21
Police	21
Fire	21
Rescue Service	22
Sanitation	22
 EDUCATION	 23
Public Schools	23
Nonpublic Schools	23
Vocational Schools	23
Colleges and Universities	24
 HEALTH.	 25
Hospitals	25
Nursing Homes	25
Public Health	25
 OTHER LOCAL FACILITIES.	 26
Communications	26
Religious Institutions	26
Financial Institutions	27
Hotels and Motels	27
Clubs and Organizations	27
 RECREATION	 28
Local.	28
Area	28
 AGRICULTURE - NATURAL RESOURCES - CLIMATE	 29
Agriculture	29
Natural Resources	29
Climate	30
 HISTORY	 31

GENERAL HIGHWAY MAP GRAYSON COUNTY KENTUCKY

PREPARED BY THE
KENTUCKY DEPARTMENT OF PLANNING
IN COOPERATION WITH THE
US DEPARTMENT OF TRANSPORTATION
FEDERAL HIGHWAY ADMINISTRATION



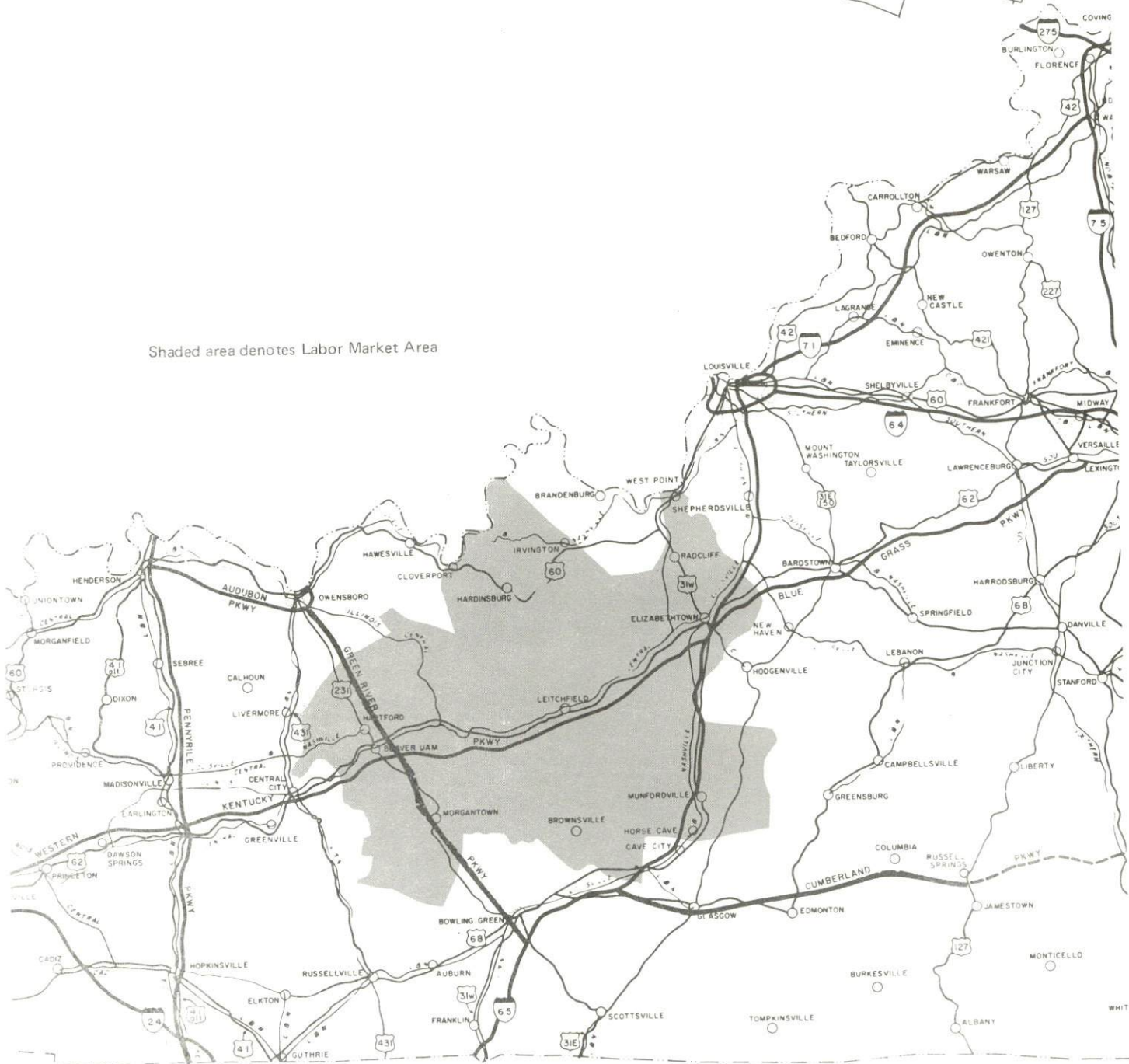
ORIGINAL DATA		1962	
DATE	BY	DATE	BY



LEITCHFIELD LABOR MARKET AREA



Shaded area denotes Labor Market Area



LEITCHFIELD, KENTUCKY - A RESOURCE PROFILE

Leitchfield, the county seat of Grayson County, is located in west central Kentucky, just off the Western Kentucky Parkway. Leitchfield is 72 miles southwest of Louisville, 185 miles southwest of Cincinnati, Ohio, and 123 miles northeast of Nashville, Tennessee.

The population of Leitchfield was 2,983 in 1970, while the population of Grayson County was 16,445.

The Economic Framework

Total employment in Grayson County in 1972 averaged 5,160 with agriculture providing 1,260 jobs, manufacturing 1,010, trade and services 790, and government 640. Since 1963 manufacturing employment has increased by approximately 265 percent or 925 jobs. Major industrial products are: apparel, furniture parts, screwdriver bits and holders, carbide tipped masonry tools and circular saws, and business forms.

Per capita income in the county in 1971 was \$2,222. Between 1961 and 1971, per capita personal income in the county increased by approximately 136 percent.

The Leitchfield labor market area includes Grayson and the six surrounding counties. Area employment in 1972 totaled 45,470 jobs, with agriculture providing 7,530, manufacturing 6,360, trade and services 8,060, and government 11,220. Industrial employment in this area has increased by approximately 230 percent since 1963, with sharpest gains in apparel, electrical machinery, metal products, and rubber industries.

Despite important industrial gains in recent years the area still has a deficit of 8,692 manufacturing jobs when measured against the national industrial employment-population ratio. This indicates an area where the potential for additional manufacturing production is excellent.

Resources for Growth

1. There is a current estimated labor supply of 7,360 men and 8,570 women available for industrial jobs in the labor market area. In addition, 7,660 young men and 7,370 young women will become 18 years of age by 1980 and will be potentially available for work.

2. The local transportation capability is excellent. The Illinois Central Gulf Railroad provides a variety of services. Adequate trucking service is available. The Western Kentucky Parkway passes 1 mile south of Leitchfield, and U. S. Highway 62 passes through Leitchfield. Commercial air service is available in Owensboro, Kentucky, 55 miles away by turnpikes.

3. Kentucky Utilities Company, Warren RECC, Meade County RECC, Farmers RECC and Nolin RECC provide electrical power to Leitchfield and Grayson County. Natural gas is supplied to Leitchfield by the Leitchfield Utilities Commission, whose source of supply is the Texas Gas Transmission Corporation. Three propane and butane distributors and one fuel oil distributor serve Leitchfield.

4. Education is an important growth asset for Grayson County. A consolidated school system operates within the county. One university, two senior colleges and two community colleges are located within 60 miles of Leitchfield.

The Breckinridge County Area Vocational Extension Center is located in Hardinsburg, 26 miles distant, and offers training in seven different skills. Elizabethtown State Vocational School is only 33 miles from Leitchfield and offers training in six different skills.

Community Programs for Improvement

Projects completed or underway:

1. City received a new 1,000-gallon fire truck - 1974.
2. City purchased two new police cars - 1974.
3. City and county law enforcement departments purchased new radio equipment for fixed stations and all patrol cars.
4. Police department, fire department and rescue squad occupied a single facility which had been renovated in 1974.
5. Authorized ambulance service started operation in June 1973. Currently three ambulances are in operation and a fourth ambulance is available if the need arises.
6. A new garbage truck was purchased - 1974.
7. A new city hall was purchased - 1972.

8. A 66-acre landfill was opened in 1974.
9. Approximately 40 miles of city roads were blacktopped in 1974.
10. Over 100 new street lights were installed in 1974 in areas not previously lighted.
11. Two sidewalk projects were completed in 1974; one in the vicinity of the industrial park and one along School Street.
12. A county water district was formed to serve approximately 400 residences. Laying of lines will be completed and the system completely operational by November, 1974.
13. A new \$2.3 million consolidated county high school will open in the fall of 1974.
14. Land has been purchased adjacent to the new high school for an area vocational school. Construction is to start in 1974.
15. A consolidated county junior high school will open in the fall of 1974. The building that was formerly the Leitchfield City High School will be used for the consolidated junior high school.
16. Lunchrooms were renovated in two area elementary schools in 1974.
17. Indian Hills shopping center is under construction in Leitchfield. Completion of construction is scheduled for December 1974. It will provide space for fourteen stores totaling 68,200 square feet.
18. Three new industries have located in Leitchfield since 1971. During the same period, six of the older industries have completed plant expansions.
19. Grading of 115 acres in the industrial park was started in July 1974 for a new plant to be constructed by Tell City Furniture Company.
20. Leitchfield annexed additional land in 1974 and the current population of Leitchfield is estimated to be 5,000.

Projects planned or started without scheduled completion dates:

1. Work continues on a new city park. A community house was finished in 1973.
2. Construction of a 35-bed expansion of the Grayson County War Memorial Hospital is scheduled for late 1974.
3. Grayson County Water District has purchased land in Clarkson for a new water tower. Construction of the water tower has not been programmed at this time.
4. Clearing of an 8.7-acre site on South Main Street in Leitchfield continues. A mall shopping area and parking lot will be constructed on this site.
5. The Citizens Bank and Trust Company is constructing a new building adjacent to the planned shopping mall.
6. A 3,000-foot airfield is being constructed approximately 3 1/2 miles southeast of Leitchfield adjacent to Highway 259.
7. A nine-hole golf course is being constructed near the airfield. The course is scheduled to open in 1975.

Recreation, Entertainment and Livability

Rough River Dam State Resort Park, 18 miles distant, is a 9,234-acre resort-type park on Rough River Reservoir with lodge, cottages, and camping accommodations. Facilities and recreation include a lodge, pool, beach, bathhouse, motorboat and paddle boat rentals, fishing, miniature golf, tennis, hiking, shuffleboard, picnic shelters, playground area, supervised recreation and a 2,500-foot paved airstrip inside the park.

Mammoth Cave National Park, located 30 miles away, provides the visitor with more than 150 miles of charted caverns occurring on five distinct levels. Guided tours are conducted daily. There are many interesting attractions in the park. Accommodations available include a motel-type lodge, a hotel and cottages. The camping facilities, picnic areas, and trailer parks are excellent. Recreation activities include tennis, shuffleboard and boat trips.

Abraham Lincoln Birthplace National Historic Site, located 43 miles distant at Hodgenville, Kentucky, includes 100 acres of the original Thomas Lincoln farm where Abraham Lincoln was born. Nearby is Abraham Lincoln's boyhood home.

Nolin Dam and Reservoir, located 12 miles away, provides flood control for the Nolin River Basin. The dam is 166 feet high and 908 feet long. The reservoir is 25 miles long at minimum level and 57 miles long at maximum level. Recreation facilities being developed on the 1,023 acres of park area include: fishing, hiking, boating, camping, and picnicking.

THE LABOR MARKET

POPULATION TRENDS

Area	Population				Percent Change	
	1973*	1970	1960	1950	1960-70	1950-60
Leitchfield	N. A.	2,983	2,982	1,312	--	+127.3
Labor Market Area	160,900	160,899	147,872	139,713	+ 8.8	+ 5.8
Grayson County	18,000	16,445	15,834	17,063	+ 3.9	- 7.2
Breckinridge County	15,200	14,789	14,734	15,528	+ 0.4	- 5.1
Butler County	10,300	9,723	9,586	11,309	+ 1.4	- 15.2
Edmonson County	9,400	8,751	8,085	9,376	+ 8.2	- 13.8
Hardin County	73,100	78,421	67,789	50,312	+15.7	+ 34.7
Hart County	14,900	13,980	14,119	15,321	- 1.0	- 7.8
Ohio County	20,000	18,790	17,725	20,840	+ 6.0	- 14.9

*Provisional Estimates.

Sources: U. S. Department of Commerce, Bureau of the Census, Census of Population, 1970, 1960, 1950. U. S. Bureau of the Census, Current Population Reports, Series P-26, June 1973.

GENERAL EMPLOYMENT CHARACTERISTICS, 1972

Major Employment Group	Employment	
	Grayson County	Labor Market Area
TOTAL	5,160	45,470
Agricultural	1,260	7,530
Nonagricultural	3,900	37,940
Manufacturing	1,010	6,359
Government	640	11,220
Trade and Services	791	8,060
Other	1,459	12,301

Source: Kentucky Department for Human Resources, Bureau for Administration and Operations.

MANUFACTURING EMPLOYMENT TRENDS BY INDUSTRY
SEPTEMBER 1973 AND 1963

Industry	Grayson County			Labor Market Area		
	1973	1963	% Change	1973	1963	% Change
TOTAL	1,273	348	+ 265.8	7,551	2,285	+ 230.5
Food & Kindred Products	60	47	+ 27.7	351	227	+ 54.6
Tobacco	0	0	0	0	22	- 100.0
Apparel, Textiles, Leather	429	226	+ 89.8	2,640	1,092	+ 141.8
Lumber, Furniture	68	41	+ 65.9	559	237	+ 135.9
Printing & Publishing, Paper	94	6	+1466.7	227	106	+ 141.2
Chemicals, Petroleum & Coal, Rubber	27	0	+ 100.0	839	24	+3395.8
Stone, Clay & Glass	35	20	+ 75.0	230	215	+ 7.0
Primary Metals	0	0	0	120	0	--
Machinery, Metal Products, Equip.	450	8	+5525.0	2,076	126	+1547.6
Other	100	0	+ 100.0	509	200	+ 154.5

Source: Kentucky Department for Human Resources, Number of Workers in Manufacturing Industries Covered by Kentucky Unemployment Insurance Law Classified by Industry and County, September 1973, September 1963.

LEITCHFIELD MANUFACTURING FIRMS,
THEIR PRODUCTS AND EMPLOYMENT

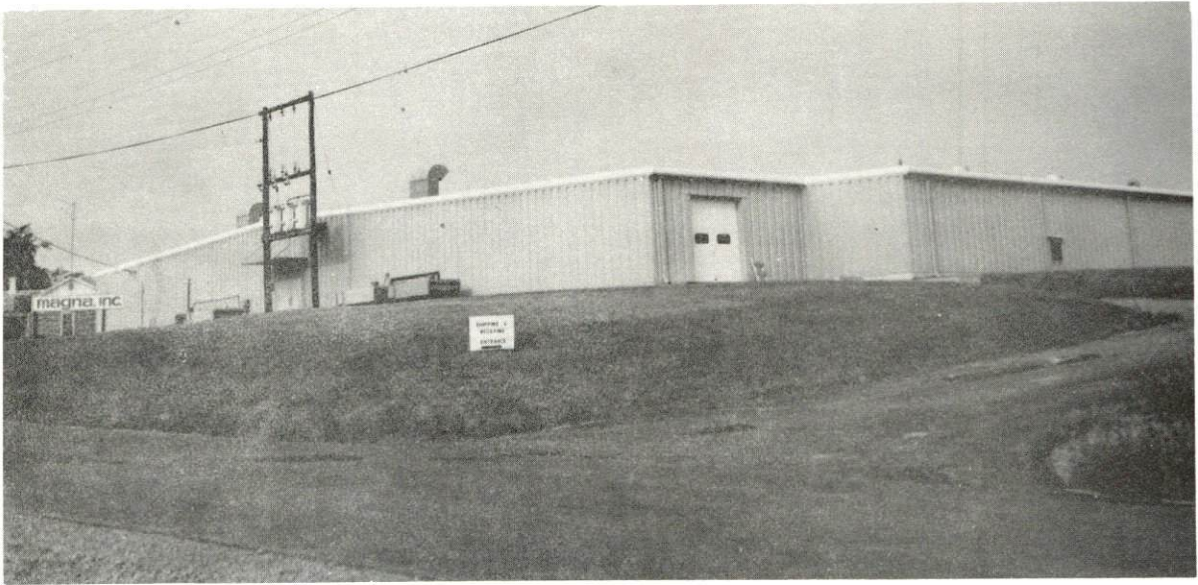
Firm (Establishment Date)	Product	Employment		
		Total	Male	Female
Albany Cheese, Inc. (1958)	Cheese	63	40	23
Future Designs, Inc. (1970)	Wedge and standard concrete block	9	8	1
Grayson County News (1940)	Newspaper	2	1	1
Huron Copysette, Inc. (1972)	Business forms	114	52	62
Leitchfield Concrete Products (1946)	Concrete blocks, ready mixed concrete, pre-cast concrete products	18	16	2

(cont.)

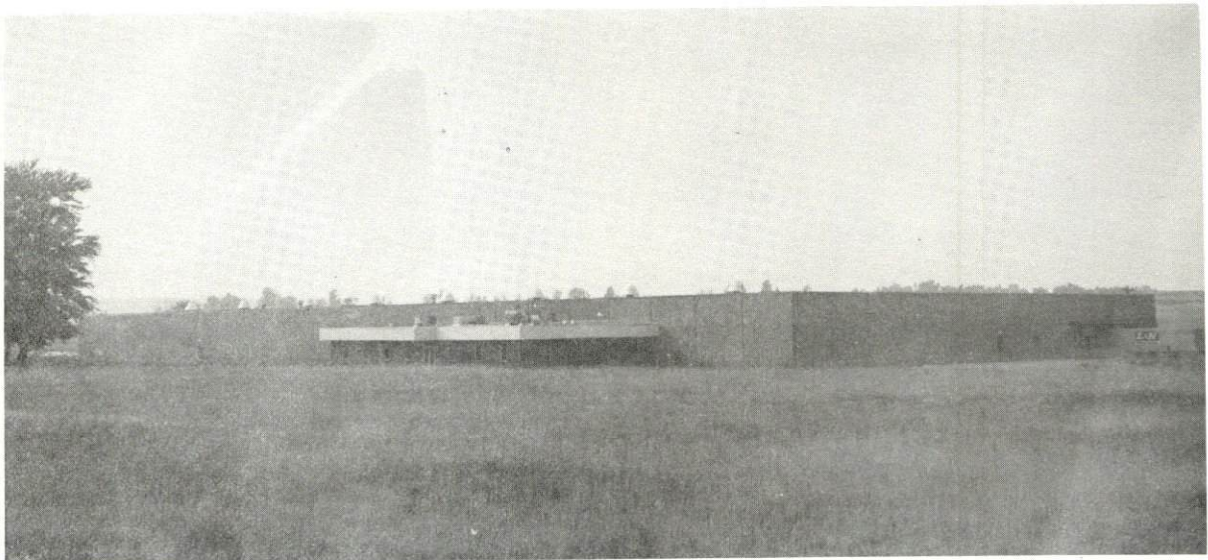
<u>Firm (Establishment Date)</u>	<u>Product</u>	<u>Employment</u>			<u>Organized</u>
		<u>Total</u>	<u>Male</u>	<u>Female</u>	
Leitchfield Gazette (1881)	Newspaper	8	4	4	
Leitchfield Manu- facturing Co. (1925)	Men's, women's and children's sportswear	495	40	455	
Magna, Inc. (1971)	Pharmaceuticals, cosmetics	28	8	20	
Paper Novelty Manu- facturing Co. (1968)	Christmas decorations	69	30	39	
Ragland Quarry	Agricultural lime	16	16	0	
Seng Company (1969)	Furniture parts	250	200	50	*
Vermont American Corporation (1967)	Miscellaneous hand tools, carbide tipped masonry tools, carbide tipped circular saws	148	94	54	*
Vermont American Corp., Magna Products Division (1967)	Screwdriver bits and holders	72	63	9	*

*See Labor Organizations, Page 12.

Source: Kentucky Department of Commerce, Division of Research and Planning.



Magna, Incorporated
Leitchfield, Kentucky



Seng Company
Leitchfield, Kentucky

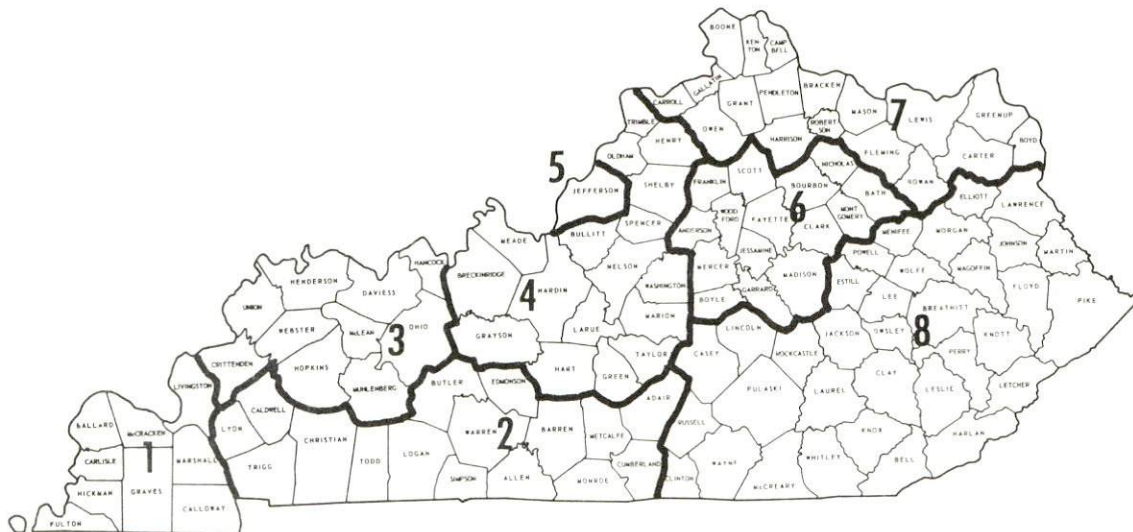


Huron Copysette, Inc.
Leitchfield, Kentucky

WAGES

Occupational wage rates for specific industries are usually not available to most government agencies, and wage data furnished to state employment agencies by industrial employers is protected from disclosure by federal law. The most reliable up-to-date wage information can be obtained by direct contact with local employers.

Associated Industries of Kentucky, a voluntary organization of Kentucky businesses, regularly collects occupational wage rates and fringe benefits data from participating member firms. Data is compiled for over 130 clearly defined office, production, and service occupations. Tabulations are published for eight regions of Kentucky, as shown on the map below. It should be noted that the data may be weighted by the preponderance of firms in the larger cities and may be somewhat higher than the rates paid in the smaller communities. Data from these tabulations are available, upon request, from the Kentucky Department of Commerce, Frankfort, Kentucky 40601.



Associated Industries of Kentucky Area Wage Surveys

LABOR ORGANIZATIONS

<u>Union</u>	<u>Representing Manufacturing Workers at:</u>
International Union of Electrical, Radio and Machine Workers	Seng Company
Aluminum Workers International, Affiliate of AFL-CIO	Vermont American Corporation
Aluminum Workers International, Affiliate of AFL-CIO	Vermont American Corporation, Magna Products Division

ESTIMATED MALE LABOR SUPPLY LEITCHFIELD LABOR MARKET AREA

<u>Area</u>	Current			Future	
	<u>Total</u>	<u>Not in Labor Force</u>	<u>Unemployed</u>	<u>Under- employed</u>	<u>Reaching 18 Yrs. of Age by 1980</u>
Labor Market					
Area	7,360	1,390	1,380	4,590	7,662
Grayson	710	190	240	280	874
Breckinridge	800	400	170	230	775
Butler	760	360	180	220	501
Edmonson	540	30	370	140	449
Hardin	3,570	140	120	3,310	3,402
Hart	400	150	120	130	720
Ohio	580	120	180	280	941

Sources: Kentucky Department for Human Resources, Kentucky Labor Supply Estimates by County, 1973. Kentucky Department of Commerce, Future Labor Supply by 1980.

ESTIMATED FEMALE LABOR SUPPLY
LEITCHFIELD LABOR MARKET AREA

Area	Current			Under- employed	Future
	Total	Not in Labor Force	Unemployed		Reaching 18 Yrs. of Age by 1980
Labor Market					
Area	8,570	4,440	1,040	3,090	7,368
Grayson	1,110	760	80	270	825
Breckinridge	1,040	690	110	240	764
Butler	660	310	120	230	490
Edmonson	710	370	140	200	452
Hardin	3,220	1,220	410	1,590	3,278
Hart	800	490	100	210	693
Ohio	1,030	600	80	350	866

Sources: Kentucky Department for Human Resources, Kentucky Labor Supply Estimates by County, 1973. Kentucky Department of Commerce, Future Labor Supply by 1980.

PER CAPITA PERSONAL INCOME

Area	1971	1961	% Change
Grayson County	\$2,222	\$ 939	+136.6
Labor Market Area Range	\$1,703 - 4,402	\$768 - 2,810	N. A.
Kentucky	3,310	1,677	+ 97.3
U. S.	4,164	2,265	+ 83.8

Sources: University of Kentucky, Office of Development Services and Business Research, Per Capita Income in Kentucky. U. S. Department of Commerce, Bureau of Economic Analysis, Survey of Current Business, August, 1973.

TRANSPORTATION

Rail

Line serving Leitchfield - Illinois Central Gulf Railroad

Services - Freight, siding and switching. One freight train daily from and to Central City; connections to north, south, east and west. Two scheduled northbound and two scheduled southbound through freights daily. Average of two unscheduled northbound or southbound through freights per day. Siding space: Leitchfield - 78 cars, Caneyville - 105 cars, Big Clifty - 95 cars. Piggyback service is available in Louisville, Kentucky, 71 miles.

For details on routing, schedules, rates, and services, contact:

Assistant Vice President
Industrial Development
Illinois Central Gulf Railroad Company
Illinois Center II
233 North Michigan Avenue
Chicago, Illinois 60605

Truck Service

Company

Home Office

Leitchfield Transfer Co.*

619 Mill Street
Leitchfield, Kentucky 42754

Arnold Ligon Truck Line, Inc.
(United Trucking)

332 Hood Avenue
Lebanon, Kentucky 40033

Majors Transit, Inc.

P. O. Box 7
Caneyville, Kentucky 42721

McLean Trucking Company

P. O. Box 213
Winston-Salem, North Carolina 27107

T.I.M.E. -DC, Inc.

P. O. Box 2550
Lubbock, Texas 79408

Other Freight Services

Nearest Shipping Center

United Parcel Service
REA Express

Bowling Green, Kentucky, 58 miles
Leitchfield, Kentucky 42754

*Local terminal.

HIGHWAY MILES AND TRUCK TRANSIT TIME IN DAYS FROM
LEITCHFIELD, KENTUCKY, TO SELECTED MARKET CENTERS

City	Delivery		City	Delivery	
	Highway Miles	Time TL		Highway Miles	Time TL
Atlanta, Ga.	386	2nd AM	Los Angeles, Calif.	2,040	5
Birmingham, Ala.	324	2nd AM	Louisville, Ky.	72	1st AM
Chicago, Ill.	373	2	Nashville, Tenn.	123	1st AM
Cincinnati, Ohio	185	1st AM	New Orleans, La.	653	3rd AM
Cleveland, Ohio	370	2nd AM	New York, N. Y.	841	3rd AM
Detroit, Mich.	457	2nd AM	Pittsburgh, Pa.	466	3rd AM
Knoxville, Tenn.	308	Next day	St. Louis, Mo.	251	1st AM

Source: Delivery Time Only - Leitchfield Transfer Company, 619 Mill Street, Leitchfield, Kentucky 42754

Air

	<u>Local</u>	<u>Nearest Commercial</u>
	Rough River State Park Airport	Owensboro-Daviess County Airport
Location:	24 miles northwest of Leitchfield	55 miles northwest of Leitchfield
Runways:	1 paved	2 paved
Length:	2,500 feet	6,500 feet; 3,700 feet
Traffic Control:	Wind sock	Control tower, ground control, ILS System and guards
Lighting:	None	Beacon, runways, wind tee, obstruction lights and taxi lights
Services:	None	Ozark Airlines, 80, 91 and 100 octane, Jet A fuel, storage, major A & E repairs, general flying service, taxi
Air Freight Service:		Accepted on a space available basis

Bus

Kentucky Bus Lines, Continental Trailways

Taxi

One company, 24-hour service

POWER AND FUEL

Electricity

Company serving Leitchfield - Kentucky Utilities Company

Source of power - Kentucky Utilities Company

Total generating capacity - 1,215,000 KW

For industrial rates contact:

Kentucky Utilities Company

Lexington, Kentucky

Company serving Grayson County - (1) Warren RECC; (2) Meade County RECC; (3) Farmers RECC; (3) Nolin RECC

Source of power - (1) TVA; (2) Big Rivers RECC; (3) East Kentucky Power Cooperative

Total generating capacity - (1) 19,400,000 KW (2) 400,000 KW

(3) 548,000 KW

For industrial rates contact:

Warren RECC

P. O. Box 1118

Bowling Green, Kentucky 42101

Meade County RECC

P. O. Box 367

Brandenburg, Kentucky 40108

Farmers RECC

504 South Broadway

Glasgow, Kentucky 42141

Nolin RECC

P. O. Box 668

Elizabethtown, Kentucky 42701

Natural Gas

Company serving Leitchfield - Leitchfield Utilities Commission
Source of supply - Texas Gas Transmission Corporation
Size of transmission mains - 30-inch (supplier); 6-inch (distributor)
Distribution mains - 2 and 4 inches
Distribution pressure - 13 to 15 psi
Btu content - 1,050 per cubic foot
For rates and supplies contact:

Leitchfield Utilities Commission
314 West White Oak
Leitchfield, Kentucky

Other Fuels

Propane and Butane

Fosters Bottle Gas Company, 126 West Market Street
Leitchfield, Kentucky
Lorenzo Holland, 313 Floyd Street
Leitchfield, Kentucky
Independent Oil Company, 206 Marion Street
Leitchfield, Kentucky

Fuel Oils

Distillate fuel oil - Gulf Oil (Bulk), Leitchfield, Kentucky
Residual fuel oil - arrangements must be made with the refinery.

Low sulphur content coal - Available in Eastern Kentucky.

WATER AND SEWERAGE

Water

Company serving Leitchfield - Leitchfield Utilities Commission
Source - Rough River Lake
Treatment plant capacity - 1,000,000 gpd
Average daily consumption - 535,000 gallons (September 1973)
Peak daily consumption - 702,000 gallons (September 1973)
Type treatment - Chlorine, fluoride, lime, alum, potassium permanganate
Storage capacity - 275,000 gallons
Size lines - 2, 4, 6, 8, 10 and 12 inches
Average pressure - 85 - 90 psi near industrial site; less pressure in smaller line
Average temperature - 60° F.

MONTHLY WATER RATES FOR WHOLESALE AND INDUSTRIAL CONSUMERS

First	2,000 gallons	\$4.80 (Minimum bill)
Next	3,000 gallons	2.00 per 1,000 gallons
Next	5,000 gallons	1.45 per 1,000 gallons
Next	10,000 gallons	1.20 per 1,000 gallons
Next	10,000 gallons	1.10 per 1,000 gallons
Next	20,000 gallons	0.80 per 1,000 gallons
Next	50,000 gallons	0.65 per 1,000 gallons
All over	100,000 gallons	0.50 per 1,000 gallons

Name of water district - Grayson County Water District
Area served - From Leitchfield east along U. S. 62 to within 1 mile of the Grayson County line. West of Leitchfield approximately 3 miles along U. S. 62; along Kentucky 187 South approximately 1 1/2 miles
Date when water district began operating - Entire system to be in operation by November 1974
Source of supply of treated water - Leitchfield Utilities Commission
Amount of water which can be purchased in one month - 8,000,000 gallons
Peak amount of water used in a 24-hour period - 400 customers (estimated)
Storage capacity - Site has been purchased at Clarkson for construction of a 200,000-gallon elevated tank
Size lines - 6, 8, 10, and 12 inches
Rates -

First	1,500 gallons per month	\$6.50 (Minimum bill)
Next	3,500 gallons per month	3.50 per 1,000 gallons
Next	5,000 gallons per month	3.00 per 1,000 gallons
Next	15,000 gallons per month	2.00 per 1,000 gallons
All over	25,000 gallons per month	1.00 per 1,000 gallons

Surface water sources - Green River; Rough River and Nolin Reservoirs
Average discharge - Rough River at Falls of the Rough, 698 cfs (23 Years, USGS Unadjusted); Bear Creek near Leitchfield, 42.4 cfs (22 Years, USGS)

Expected ground water yield - 50 to 200 gpm along the western and southwestern border of the county and small portions throughout the county; 5 to 50 gpm in northeastern and northwestern tips of county; 5 gpm or less over the remainder of the county

Sewerage

Company serving Leitchfield - Leitchfield Utilities Commission

Design capacity - 360,000 gallons per day*

Average daily flow - 259,000 gallons per day*

Treatment - Primary and secondary

Type treatment - Trickling filter, digester, drying beds, final settling tank, primary settling tank

Treated effluent discharged into - Bear Creek

Size of sanitary mains - 6 and 8 inches

Size of storm mains - Minimum - 12 inches

Rates - 60 percent of monthly water bill

*Data obtained by Division for Natural Resources and Environmental Protection Survey conducted in September 1971. Parts of the system can handle up to 720,000 gpd, but the total capacity of the system is limited to 360,000 gpd based on the capacity of drying beds and settling system.

LOCAL GOVERNMENT

City

Structure - Mayor - 4-year term; 6 councilmen - 4-year terms

Budget 1972-73 - General Fund	\$240,755
Water, Sewer and Gas Fund	494,781

Fees and licenses - 1 percent occupational tax on wages and profits

County

Structure - County Judge - 4-year term; 6 magistrates - 4-year terms

Budget 1973-74 - General Fund	\$126,292
Road Fund	61,100

Assessed Value of Property, 1973

<u>Classes of Property</u>	<u>Leitchfield</u>	<u>Grayson County</u>
Real Estate	\$16,383,970	\$80,884,077
Tangibles	5,017,078	12,105,755
Public Service	1,253,432	10,374,128

Property Taxes

Land and buildings are taxed by the state and may be taxed by local jurisdictions. The state rate is \$0.015 per \$100 of assessed valuation.

Tangible personal property owned by manufacturers (automobiles, trucks, finished goods, office furniture, office equipment) is taxed by the state at \$0.15 per \$100 and may be taxed by local jurisdictions.

Manufacturing machinery, raw materials inventories, and goods in process inventories are not subject to local taxation. The state rate is \$0.15 per \$100.

Property stored in public warehouses is not subject to local taxation. The state rate is only \$0.015 per \$100.

All property is assessed at 100 percent of fair cash value.

Local Property Tax Rate Per \$100 Of Assessed Valuation, 1973*

<u>Taxing Jurisdiction</u>	<u>Leitchfield</u>	<u>Grayson County</u>
County	\$.121	\$.121
School	.352**	.352
City	.150	

Utilities Gross Receipts Tax for Schools

Grayson County levies a 3 percent tax on utilities receipts for schools. This tax is paid by all consumers of utilities. Exempted are receipts from utilities services that are resold and the receipts from the sale of energy or energy producing fuels that exceed 3 percent of the cost of production in manufacturing, processing, mining or refining.

Planning and Zoning

Leitchfield currently does not have a zoning code. A study has been conducted but it is not expected that a zoning ordinance will be passed in the near future.

Safety

<u>Police</u>	<u>Leitchfield</u>	<u>Grayson County</u>
Total staff	12	3
Radio-patrol cars	2	3
<u>Fire</u>		
American Insurance Association Fire Rating	7	
Volunteers	34	
Equipment:		
1,000 gpm pumper	1	
750 gpm pumper	1	
500 gpm pumpers	2	
Emergency trucks	2	
Car	1	

*Kentucky Department of Revenue, Kentucky Property Tax Rates, 1973.

**Leitchfield only - additional \$.05.

Rescue Service

Leitchfield Rescue Squad:

Number of volunteers - 32

Equipment - 5 complete sets of scuba diving equipment, 1 boat (14 feet),
1 resuscitator,

Personnel training - Annual refresher training conducted for volunteer
firemen

Sanitation

	<u>Leitchfield</u>
Type service	Municipal
Fee charged:	
residential	\$1.50 per month
business	\$5.00 per pickup*
Collection frequency:	
residential	Once weekly
business	Depends on volume
Trash pickup	Once weekly
Disposal method	Landfill

*Industrial customers may elect to haul their own trash to the landfill for a fee of \$50 per month.

EDUCATION

Public Schools

	<u>Grayson County</u>
Total Enrollment (1973)	3,685
Elementary	2,385
High School	1,300
Student-Teacher Ratio	23 - 1
Elementary	23 - 1
High School	23 - 1
Percent High School Graduates to College	29.6
Expenditures Per Pupil (1972-73)	\$452.47
Bonded Indebtedness, June 30, 1973	\$3,532,000

Nonpublic Schools

Total Enrollment	106
Elementary	106
Student-Teacher Ratio	21 - 1
Elementary	21 - 1

Vocational Schools

	<u>Nearest State School</u>	<u>Nearest Area Education Center</u>
	Elizabethtown State Vocational-Technical School	Breckinridge County Area Vocational Education Center
Location	Elizabethtown	Hardinsburg
Miles Distant	33	26
Curriculum	Appliance Repair Auto Mechanics Carpentry Drafting Electricity Welding	Clerical Secretarial Appliance Repair Auto Mechanics Carpentry Machine Shop Welding

Arrangements can be made to provide training in the specific production skills required by an industrial plant. Instruction may be conducted either in the vocational school or in the industrial plant, depending upon the desired arrangement and the availability of special equipment.

Colleges and Universities

<u>Name</u>	<u>Area - Within 60 Miles</u>		<u>Highest Degree Conferred</u>
	<u>Location</u>	<u>Enrollment (Fall, 1973)</u>	
Brescia College	Owensboro	960	Baccalaureate
Elizabethtown Community College	Elizabethtown	837	Associate
Fort Knox Center	Fort Knox	664	Associate
Kentucky Wesleyan College	Owensboro	642	Baccalaureate
Western Kentucky University	Bowling Green	12,330	Masters, Ph. D.*

*Cooperative program with the University of Kentucky, Lexington, for a Ph. D. in Education only.

HEALTH

Hospitals

<u>General Hospital</u>	<u>Location</u>	<u>Beds</u>
Grayson County War Memorial Hospital	Leitchfield	40

General hospital facilities - Operating room, X-ray equipment, recovery room, maternity ward, emergency room

Medical staff - 5 doctors, 15 registered nurses, 2 licensed practical nurses

Nursing Homes

	<u>Number</u>	<u>Beds</u>
Personal and intermediate care homes	2	52 personal care 116 intermediate care

Public Health

Facility - Grayson County Health Department

Staff - One sanitarian, two nurses, one health service aide, one part-time nurse - family planning, part-time commission - family planning

Budget 1974-75 - \$77,314

OTHER LOCAL FACILITIES

Communications

Telephone - General Telephone Company
Services - Standard

Telegraph - Western Union
Services - Telephone

Postal - U. S. Post Office
Class - First
Mail received - Once daily
Mail dispatched - Once daily

Newspapers -	Leitchfield Gazette	Grayson County News
Weekly and circulation -	4,900	3,700
Other papers received from - Louisville and Bowling Green, Kentucky; Chicago, Illinois; New York, New York		

Radio - WMTL - AM and FM
Stations received from - Louisville, Bowling Green and Owensboro,
Kentucky; Evansville, Indiana

Television -
Cable service
Reception from - Bowling Green and Louisville, Kentucky; Evansville,
Indiana; Nashville, Tennessee
Educational Television - Bowling Green and Elizabethtown, Kentucky;
Evansville, Indiana

Religious Institutions

Number of churches - 12
Denominations - Baptist, Catholic, Christian, Church of Christ, Church
of God, Methodist, Nazarene, Pilgrim Holiness, Presbyterian, Seventh
Day Adventist
Nearest synagogues - Louisville
Congregations - Adath Israel (reform); Adath Jeshurun (conservative);
Anshei Sfard (orthodox); Brith Sholom (reform); Keneseth Israel
(orthodox)

Financial Institutions

<u>Banks</u>	<u>Statement as of June 30, 1974</u>	
	<u>Assets</u>	<u>Deposits</u>
Leitchfield Deposit Bank	\$11,297,600.40	\$10,329,697.82
Citizens Bank	13,457,110.00	12,690,959.00
<u>Savings and Loan Association</u>	<u>Assets</u>	<u>Shared Accounts</u>
First Federal Savings and Loan Association of Leitchfield	\$15,682,830.16	\$14,868,235.35

Hotels and Motels

Total number - 4
Units - 62

Clubs and Organizations

Business and Civic - Chamber of Commerce, Leitchfield Development Council, Rotary Club, Lions Club, Optimist Club, Jaycees

Fraternal - Masonic, VFW, American Legion, Shriners Club, Scottish Rites

Women's - Woman's Club, Homemakers Club, Eastern Star, Business and Professional Womens Club

Youth - 4-H Club, Little League, FFA, Boy Scouts

Other - Sportsman's Club

RECREATION

Local

Public Recreation Facilities

- Supervised program - Year around
- Parks - 2 under construction
- Playgrounds - 2
- Golf courses - One 9-hole under construction
- Tennis courts - 4
- Baseball diamonds - 1
- Other - Boating, fishing, hunting

Private Recreation Facilities

- Movie theaters - 1 indoor, 1 drive-in
- Other - Lake, pay fishing, skating rink

Area (Within 50 miles)

- Rough River Dam State Park
- Mammoth Cave National Park
- Abraham Lincoln Birthplace National Historical Site
- Nolin Reservoir

With proximity to the metropolitan areas of Bowling Green, Louisville, and Owensboro, Leitchfield residents have access to a multitude of entertainment facilities, ranging from cultural arts programs to college and professional sports.

AGRICULTURE - NATURAL RESOURCES - CLIMATE

Agriculture*

	<u>Grayson County</u>	<u>Labor Market Area</u>
Total land area (acres)	317,440	2,190,400
Percent of area in farm land	75.8	66.7
Number of farms	1,992	11,489
Average size of farms (acres)	120.7	131.6
1969 value of all farm products	\$8,356,242	\$54,248,742
Value per farm	4,194	4,721
Total crop sales	2,676,117	21,948,531
Total livestock & livestock products	5,624,469	31,838,062
1972 agricultural production included:		
Burley tobacco (lbs.) (est.)	3,901,000	289,490,000
Corn for grain (bu.)	1,060,800**	8,125,500**
Cattle and calves (number)	38,600**	259,000**
Hogs and pigs (number)	20,000**	116,000**
Milk production, 1971 (lbs.)	30,080,000	166,000,000

Natural Resources

Principal mineral resources	Stone
Acres of commercial forest land	122,000
Most abundant tree species	White oak, red oak, hickory, ash, yellow poplar, beech, hard maple

*U. S. Department of Commerce, Bureau of the Census, Census of Agriculture, 1969. U. S. Department of Agriculture and Kentucky Department of Agriculture, Kentucky Agricultural Statistics, 1972.

**Preliminary figures.

Climate*

Grayson County

Temperature

Annual mean (30-year record)	56.0 degrees
Average annual 1973	57.5 degrees
Record highest, July, 1966 (13-year record)	104.0 degrees
Record lowest, January, 1963 (13-year record)	-18.0 degrees
Normal heating degree days (30-year record)	4,629
(Heating degree day totals are the sums of negative departures of average daily temperatures from 65° F.)	

Precipitation

Mean annual total (30-year record)	41.88 inches
Mean annual snow and sleet (33-year record)	13.20 inches
Total precipitation 1973	46.18 inches
Mean number days precipitation (.01 inch or more) (33-year record)	115
Average number days thunderstorms (33-year record)	46

Prevailing winds (14-year record) South-southwest

*U. S. Department of Commerce, Environmental Science Services Administration, Climatological Data, 1973. Station of record: Evansville, Indiana.

HISTORY

Grayson County, the fifty-fourth county established in the state, dates from 1810. Rough River flows along its northern boundary. It is the eighth largest county in Kentucky containing 514 square miles of land area. Its surface is level to gently rolling, and the soil is fairly fertile. Some tracts of virgin timber remain in the county, and deposits of limestone and iron ore dot the area.

Grayson County was named for Colonel William Grayson, a native and resident of Virginia. He was first elected as a delegate to the Articles of Confederation Congress. He was a member of the Virginia Convention that ratified the Federal Constitution in 1788, which he opposed.

Leitchfield, the county seat, 635 feet above sea level, was incorporated on February 5, 1866. It was named for Major David Leitch who owned the land on which the town was built. Leitch lived in Campbell County, Kentucky, at Leitch's Station, and some of his holdings in Grayson County were adjacent to Washington's claims. It has been said that there is no other town in the world with the exact name of Leitchfield.

George Washington once owned a section of 5,000 acres of land in the extreme northwestern part of the county. He acquired this land in 1788 from Harry Lee, generally known as "Lighthouse Harry."

Jack Thomas was the most popular person in the early history of Grayson County. He was born in a house built by Thomas Lincoln, father of the President. He was the first County and Circuit Court Clerk, and held both offices continuously from the formation of the county until 1851.

Grayson Seminary, incorporated in January 1, 1816, was an outstanding educational institution for a frontier area and continued in operation until the Civil War.

Grayson County has had bad luck with her courthouses. The first was burned by Confederate soldiers in 1864. The next building was destroyed in 1896. A third burned in April, 1936.

Grayson County's population increased by 3.9 percent from 15,834 in 1962 to 16,445 ten years later. Leitchfield's population of 2,983 has remained constant from 1960 to 1970.

Manufacturing employment increased by 265 percent from 348 in 1963 to 1,273 in 1973. Major products are sportswear, furniture parts, business forms, pharmaceuticals, hand tools, carbide tipped tools, Christmas decorations, concrete products and cheese. Major manufacturing firms are: Albany Cheese, Inc., Huron Copysette, Inc., Leitchfield Concrete Products, Leitchfield Manufacturing Co., Magna, Inc., Paper Novelty Manufacturing Co., Seng Co., and Vermont American Corp.