

1976

# Industrial Resources: Greenup County

Kentucky Library Research Collections  
Western Kentucky University, [spcol@wku.edu](mailto:spcol@wku.edu)

Follow this and additional works at: [https://digitalcommons.wku.edu/greenup\\_cty](https://digitalcommons.wku.edu/greenup_cty)

 Part of the [Business Administration, Management, and Operations Commons](#), [Growth and Development Commons](#), and the [Infrastructure Commons](#)

---

## Recommended Citation

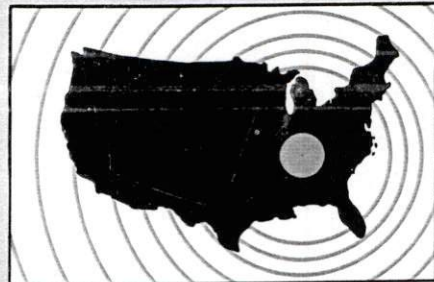
Kentucky Library Research Collections, "Industrial Resources: Greenup County" (1976). *Greenup County*. Paper 8.  
[https://digitalcommons.wku.edu/greenup\\_cty/8](https://digitalcommons.wku.edu/greenup_cty/8)

This Report is brought to you for free and open access by TopSCHOLAR®. It has been accepted for inclusion in Greenup County by an authorized administrator of TopSCHOLAR®. For more information, please contact [topscholar@wku.edu](mailto:topscholar@wku.edu).

# INDUSTRIAL RESOURCES

## GREENUP COUNTY

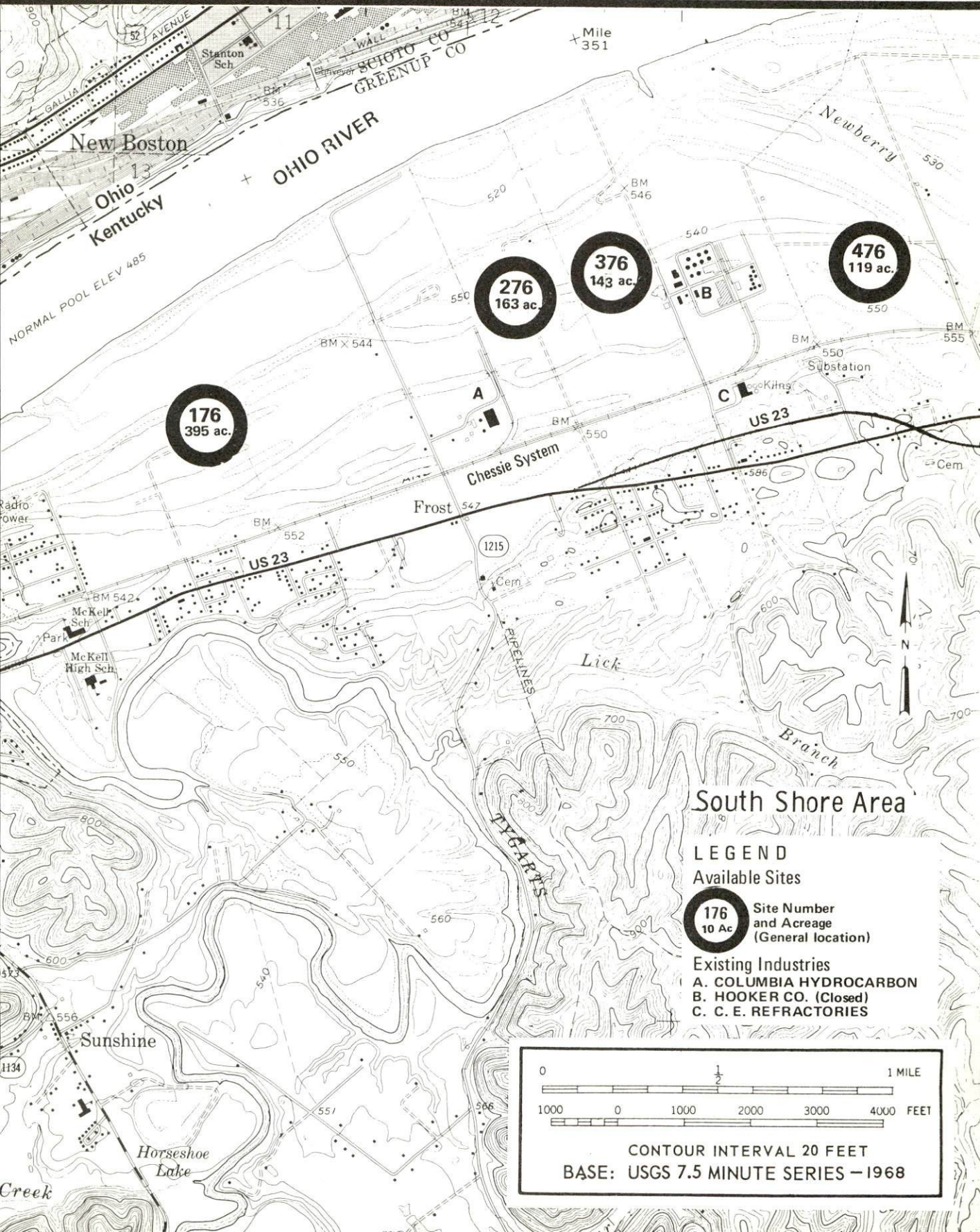
Kentucky  
first



DEPARTMENT OF COMMERCE

# GREENUP COUNTY, KENTUCKY --- Index to Industrial Sites --- 1976

For detailed data on individual sites, contact Frank J. Kelly, Jr., Chessie System, 610 Temple Bar Building, Cincinnati, Ohio 45202, or the Industrial Development Division, Kentucky Department of Commerce, Capital Plaza Tower, Frankfort, Kentucky 40601.



INDUSTRIAL RESOURCES  
GREENUP COUNTY, KENTUCKY

Prepared by  
The Kentucky Department of Commerce  
in cooperation with  
The Greenup County Industrial Foundation

1976

This copy has been prepared by the Kentucky Department of Commerce, Division of Research and Planning, and the cost of printing paid from state funds.

Production Supervisor

Patsy Wallace

Research

Terry Patterson

Clerical

Dorothy Tierney

Graphics

N. C. Montague

Frank Ferrante

Tony Cecconi

Cartography

Site Development Section

TABLE OF CONTENTS

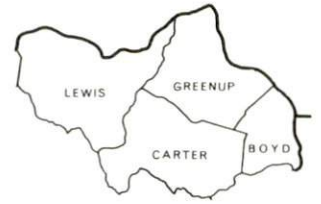
<u>Chapter</u>	<u>Page</u>
INDUSTRIAL SITES . . . . .	i
GREENUP COUNTY, KENTUCKY - A RESOURCE PROFILE . . . . .	1
THE LABOR MARKET AREA . . . . .	3
Population . . . . .	3
General Employment Characteristics, 1974 . . . . .	3
Manufacturing Employment By Industry . . . . .	4
Greenup County Manufacturing Firms, Their Products and Employment. . . . .	4
Labor Organizations. . . . .	5
Estimated Male Labor Supply. . . . .	11
Estimated Female Labor Supply . . . . .	11
Wages . . . . .	12
Per Capita Personal Income . . . . .	13
TRANSPORTATION . . . . .	14
Rail . . . . .	14
Highways. . . . .	14
Truck Service . . . . .	14
Air . . . . .	16
Bus . . . . .	16
Taxi. . . . .	16
Rental Services . . . . .	16
Water . . . . .	17
POWER AND FUEL . . . . .	18
Electricity . . . . .	18
Natural Gas . . . . .	19
Other Fuels . . . . .	19
WATER AND SEWERAGE . . . . .	21
Water . . . . .	21
Sewerage. . . . .	26
CLIMATE . . . . .	29

<u>Chapter</u>	<u>Page</u>
LOCAL GOVERNMENT . . . . .	30
City. . . . .	30
County . . . . .	31
Assessed Value of Property, 1975-76. . . . .	31
Property Taxes . . . . .	31
Local Property Tax Rate Per \$100 of Assessed Valuation, 1975 .	32
Planning and Zoning . . . . .	32
Safety. . . . .	33
Police . . . . .	33
Fire . . . . .	33
Solid Waste . . . . .	34
EDUCATION . . . . .	35
Public Schools . . . . .	35
Area Colleges and Universities . . . . .	36
Vocational Schools . . . . .	37
HEALTH. . . . .	38
Local Medical Personnel . . . . .	38
Hospitals . . . . .	38
Other Medical Facilities . . . . .	38
Ambulance Service . . . . .	38
Nursing Homes. . . . .	39
Public Health . . . . .	39
OTHER LOCAL FACILITIES . . . . .	40
Communications . . . . .	40
Library Services. . . . .	40
Religious Institutions . . . . .	42
Financial Institutions . . . . .	42
Hotels and Motels . . . . .	42
Clubs and Organizations. . . . .	43
RECREATION . . . . .	45
Local . . . . .	45
Area . . . . .	45
COMMUNITY IMPROVEMENTS. . . . .	46
HISTORY. . . . .	49

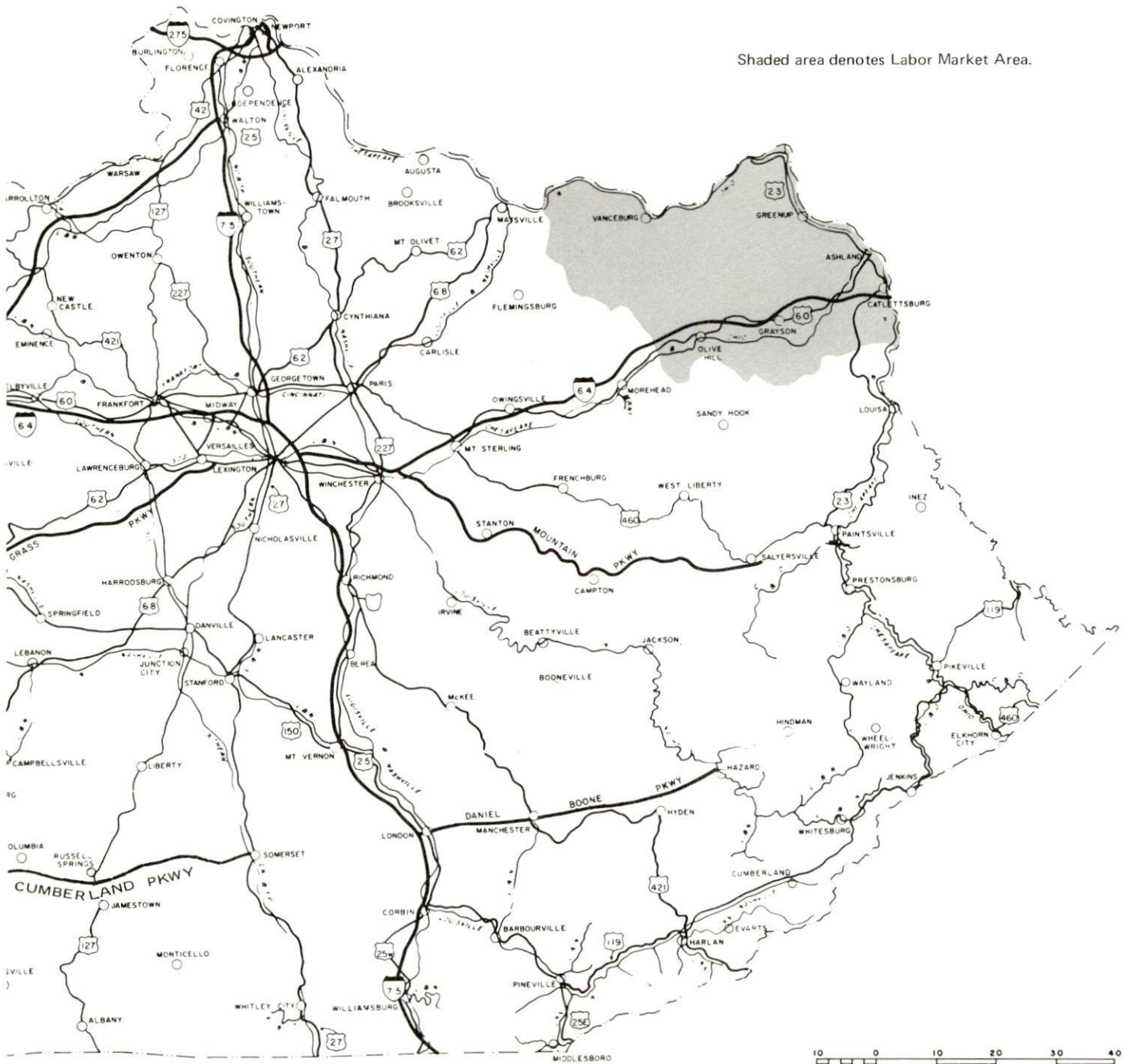




# GREENUP COUNTY LABOR MARKET AREA



Shaded area denotes Labor Market Area.



## GREENUP COUNTY, KENTUCKY - A RESOURCE PROFILE

Greenup County is located along the Ohio River in northeastern Kentucky. It is bordered by Boyd, Carter and Lewis Counties, Kentucky, and across the Ohio River from Scioto and Lawrence Counties, Ohio. The southeast portion of Greenup County, where the towns of Flatwoods, Raceland, Russell and Worthington are located, abuts the heavily industrialized Ashland, Kentucky-Ironton, Ohio area. Huntington, West Virginia is located approximately 20 miles east of the county line. The northern portion of the county, where South Shore is located, also adjoins an industrialized metropolitan area, Portsmouth, Ohio. The central portion of the county is the location of Greenbo Lake State Park, one of Kentucky's full facility resort parks.

Greenup County, with a land area of 351 square miles, had a 1974 population of 33,500. Flatwoods, the largest city, had a 1973 population of 8,423. The towns of Wurtland, Raceland, Russell, South Shore, Worthington and Greenup, the county seat, each had populations exceeding 1,000.

### The Economic Framework

The total number of Greenup County residents employed in 1974 averaged 10,610, including 250 in agriculture and 1,000 in government. Manufacturing employers in the county reported 3,720 workers; trade and services firms employed 1,320; mining employed 50. Major industrial products are: mining machinery, special refractories, plastic packing materials, sulfuric acid, and railroad cars. Part of the Armco Steel Corporation facilities are located in Greenup County.

Total unemployment in Greenup County averaged 6.2 percent of the labor force in 1974.

Per capita personal income in the county in 1973 was \$3,765, an increase of 57.5 percent since 1969.

The Greenup County labor market area includes Greenup County, the three adjoining Kentucky counties, and Lawrence and Scioto Counties in Ohio. The total number of residents in the Kentucky portion of the labor market area employed in 1974 averaged 38,920, including 1,750 in agriculture and 4,500 in government. Manufacturing employers in the Kentucky portion of the labor market area reported 12,630 workers; trade and services firms employed 9,360; mining reported 420.

## Resources for Growth

1. Labor supply - There is a current estimated labor supply of 7,260 men and 8,220 women available for jobs in the Kentucky portion of the labor market area. In addition, 6,210 young men and 5,920 young women in this area will become 18 years of age before 1982 and potentially available for work. The current labor supply would be supplemented by the number of men and women in the adjoining Ohio counties who are available for industrial jobs.

2. Transportation - The local rail, highway, air and water transportation is excellent. The area is a rail center for the Appalachian region. The Chessie System maintains a large car shop and classification facility near Raceland. The Chessie System tracks lie along the southern shore of the Ohio River while the Norfolk and Western Railway tracks stretch along the northern shore. The Greenup County area is connected to the state's highway network and Interstate 64 by U. S. Highway 23, a four-lane highway which is nearing completion. Commercial air service is available in Huntington, West Virginia, only minutes away. Although the Ashland-Boyd County and the Greater Portsmouth Regional Airports do not have scheduled air service, the runways are capable of accommodating small jet aircraft. A nine-foot navigation channel is maintained along the Ohio River, which forms the north and east boundaries of the county.

3. Power and fuel - Electricity is supplied to Bellefonte, Flatwoods, Greenup, Raceland, Russell, South Shore, Worthington, Wurtland and portions of Greenup County along the Ohio River by the Kentucky Power Company. The western portion of Greenup County is supplied by the Grayson RECC. Columbia Gas of Kentucky, supplied by the Columbia Gas Transmission Company, provides natural gas service to Bellefonte, Flatwoods, Greenup, Raceland, Russell, South Shore, Worthington and Wurtland. Six distributors of propane and seven distributors of distillate fuel oil serve the area. Low sulphur content coal is available locally. The raw water supply from the Ohio River is more than adequate for continued growth.

4. Education - Three public school systems serve Greenup County. The Ashland State Vocational-Technical School, located only 14 miles from Greenup, offers courses in thirteen areas. The Greenup County Area Vocational Education Center, located in South Shore, offers courses in six areas. Greenup is located within 55 miles of two universities, two university extension campuses, one technical school, and one community college.

THE LABOR MARKET AREA

POPULATION

Area	1974*	1970	Percent Nonwhite
			1970
Bellefonte	942**	966	N. A.
Flatwoods	8,423**	7,380	0.3
Greenup	1,256**	1,284	8.8
Raceland	1,824**	1,857	0.0
Russell	2,791**	2,925	N. A.
South Shore	1,688**	1,750	N. A.
Worthington	1,612**	1,364	0.2
Wurtland	1,009**	1,060	N. A.
Labor Market Area	120,000	117,773	-
Greenup County	33,500	33,192	0.4
Boyd County	52,500	52,376	1.7
Carter County	21,200	19,850	0.2
Lewis County	12,800	12,355	0.2

\*Provisional Estimates.

\*\*1973 Population Estimates.

Sources: U. S. Department of Commerce, Bureau of the Census, Census of Population, 1970. U. S. Bureau of the Census, Current Population Reports, Series P-25, No. 562, June 1975; Series P-26, No. 120, June 1975.

GENERAL EMPLOYMENT CHARACTERISTICS, 1974

Major Employment Group	Employment by Place of Residence of Workers	
	Greenup County	Labor Market Area
Total Employment	10,611	38,921
Agriculture	253	1,750
Government	999	4,502

	Employment by Location of Jobs	
	Greenup County	Labor Market Area
Manufacturing	3,724	12,634
Trade and Services	1,316	9,364
Mining	49	423

Sources: Kentucky Department for Human Resources, Bureau for Administration and Operations; Kentucky Department of Mines and Minerals, Annual Report.

MANUFACTURING EMPLOYMENT BY INDUSTRY  
MARCH 1975

<u>Industry</u>	<u>Greenup County</u>	<u>Labor Market Area</u>
TOTAL	3,437	11,845
Food & Kindred Products	19	228
Apparel, Textiles, Leather	0	1,230
Lumber, Furniture	6	253
Printing & Publishing, Paper	14	166
Chemicals, Petroleum & Coal, Rubber	233	2,893
Stone, Clay & Glass	35	497
Primary Metals	3,130	5,706
Machinery, Metal Products, Equipment	0	872

Source: Kentucky Department for Human Resources, Number of Workers in Manufacturing Industries Covered by Kentucky Unemployment Insurance Law Classified by Industry and County, March, 1975.

GREENUP COUNTY MANUFACTURING FIRMS,  
THEIR PRODUCTS AND EMPLOYMENT

<u>Firm (Establishment date)*</u>	<u>Product</u>	<u>Employment</u>			
		<u>Total</u>	<u>Male</u>	<u>Female</u>	<u>Organized</u>
<u>Greenup</u>					
Greenup News (1938)	Newspaper	7	3	4	
Industrial Supply House of Greenup, Inc. (1968)	Special refrac- tory products, internal chills for ferrous casts, special carbons	11	10	1	
National Mine Service Company (1974)	Mining machinery	315	275	40	**
Edgiel Shepherd Lumber Company (1959)	House and barn framing, cross- ties, lumber	3	3	0	
<u>Russell</u>					
Falcon Industries (1973)	Detergents, shampoo	10	6	4	
W. B. Modern Dairy, Inc. (1935)	Milk	17	15	2	
Raceland Car Shop (1929)	Freight cars	1,000			**
Russell Publishing Co., Inc. (1908)	Job printing, shopping guide publishers	12	9	3	

(Cont.)

<u>Firm (Establishment date)*</u>	<u>Product</u>	<u>Employment</u>			<u>Organized</u>
		<u>Total</u>	<u>Male</u>	<u>Female</u>	
<u>South Shore</u>					
C. E. Refractories, Inc. (1958)	Fireclay plastic refractories	30	30	0	**
Columbia Hydrocarbon (1958)	Fractionation plant	24	22	2	**
Taylor Refractories, Division of N. L. Industries (1902)	Special refractories	234	230	4	**
<u>Wurtland</u>					
E. I. duPont de Nemours and Company (1926)	Sulfuric acid, plastic packing materials	141	135	6	

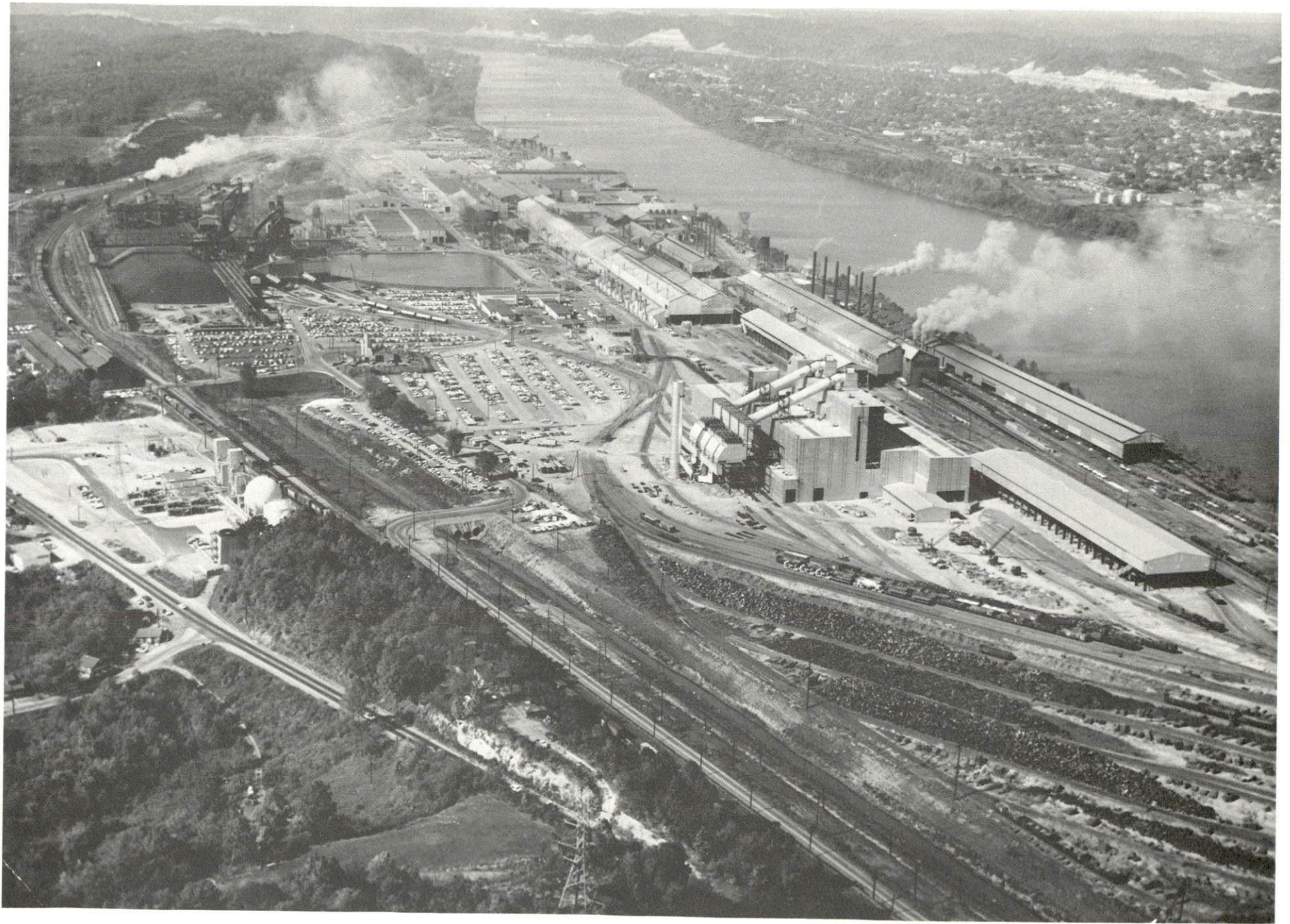
\*Armco Steel Corporation has production facilities in Greenup County. Employment is not shown above because the address is listed as Ashland, Kentucky.

\*\*See Labor Organizations below.

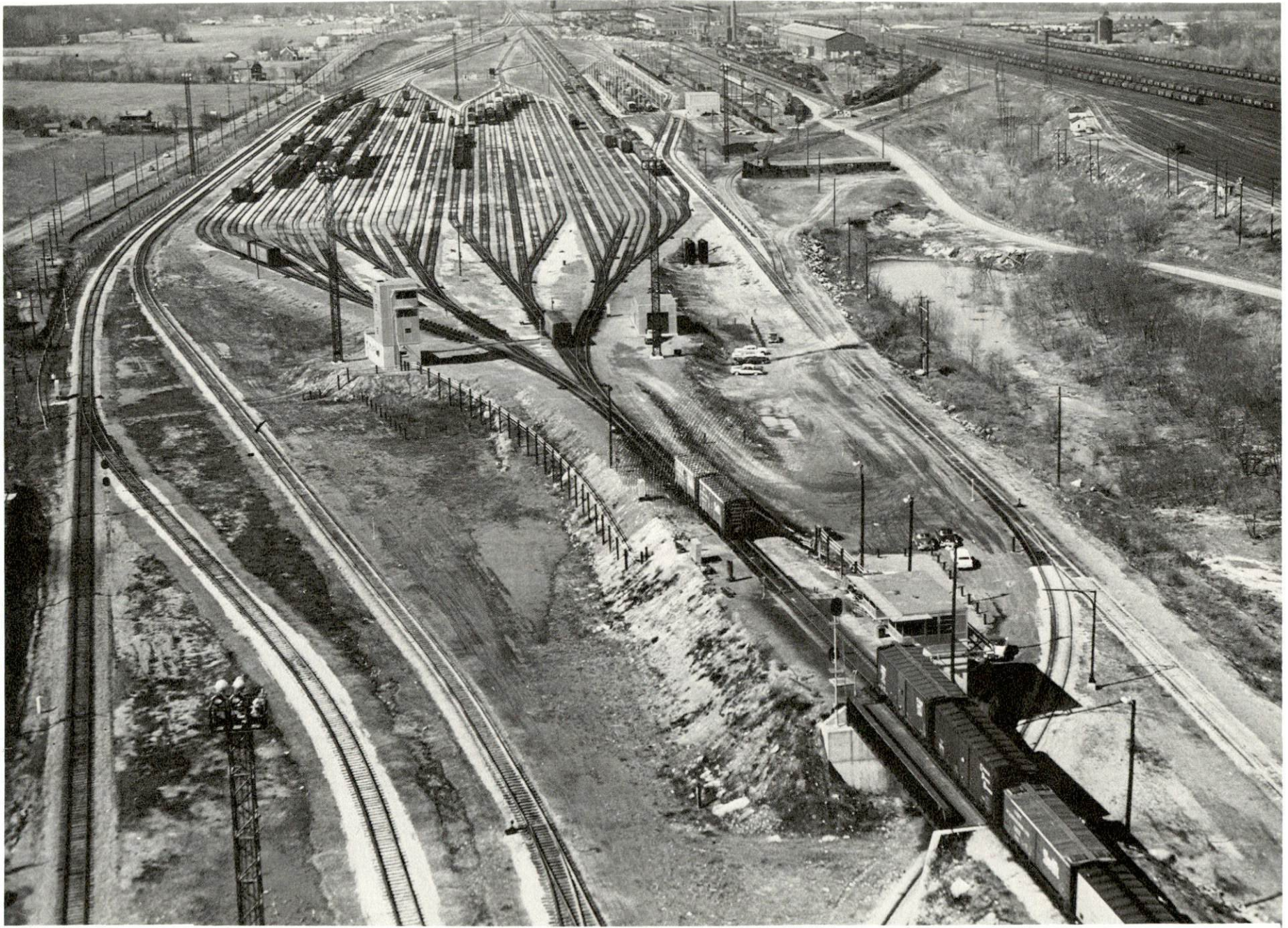
Source: Kentucky Department of Commerce, Division of Research and Planning.

#### LABOR ORGANIZATIONS

<u>Union</u>	<u>Representing manufacturing workers at:</u>
Machinists; Sheet Metal; Railway Carmen; Firemen and Oilers; Iron-Blacksmith; IBEW; and Railway Clerks	Raceland Car Shop
Oil, Chemical and Atomic Workers	Columbia Hydrocarbon
The United Stone and Allied Products Workers of America	C. E. Refractories, Inc. Taylor Refractories
United Mine Workers	National Mine Service Co.
United Steel Workers	Armco Steel Corporation in Boyd and Greenup Counties

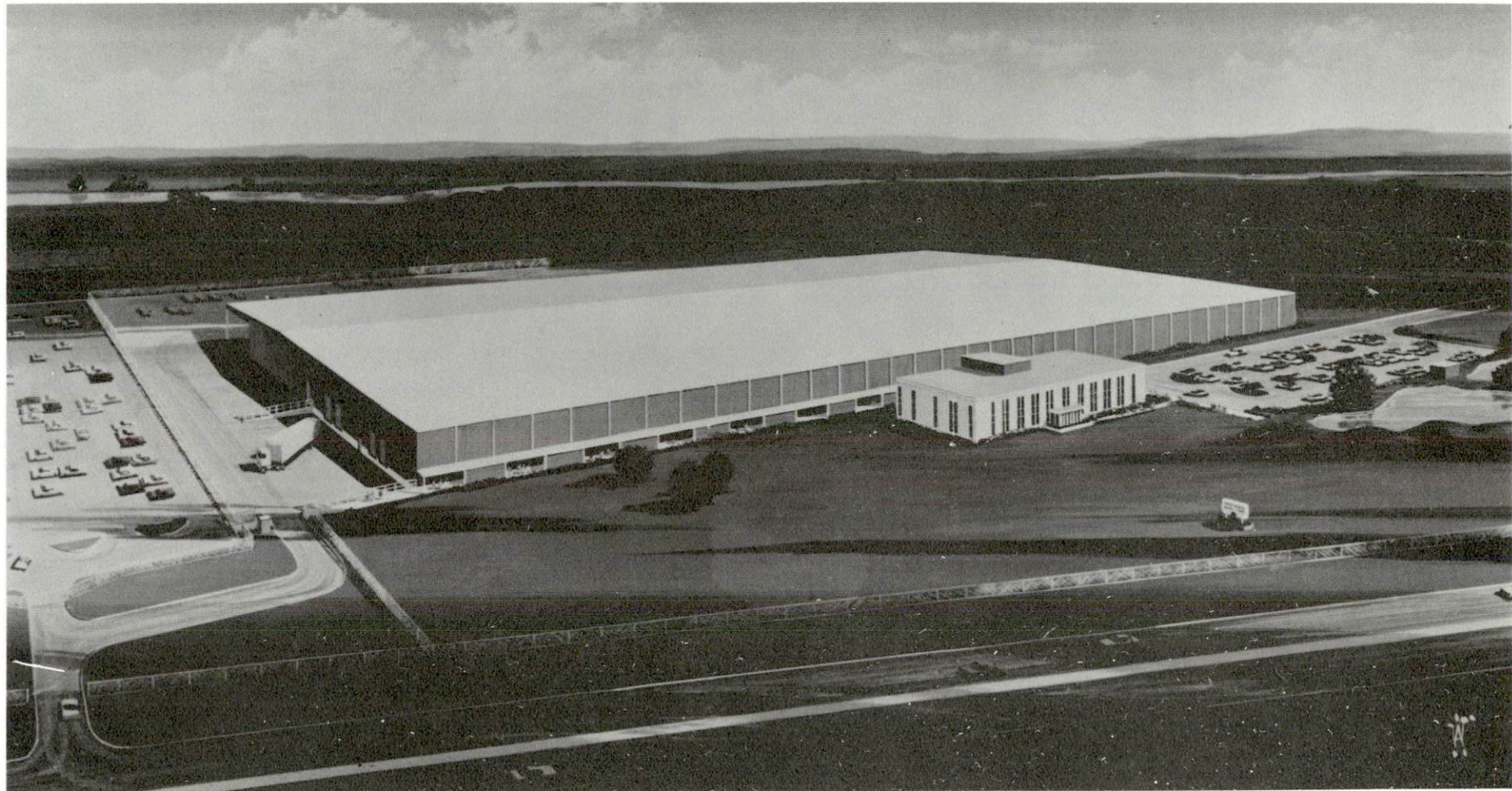


ARMCO STEEL CORPORATION  
Ashland Division

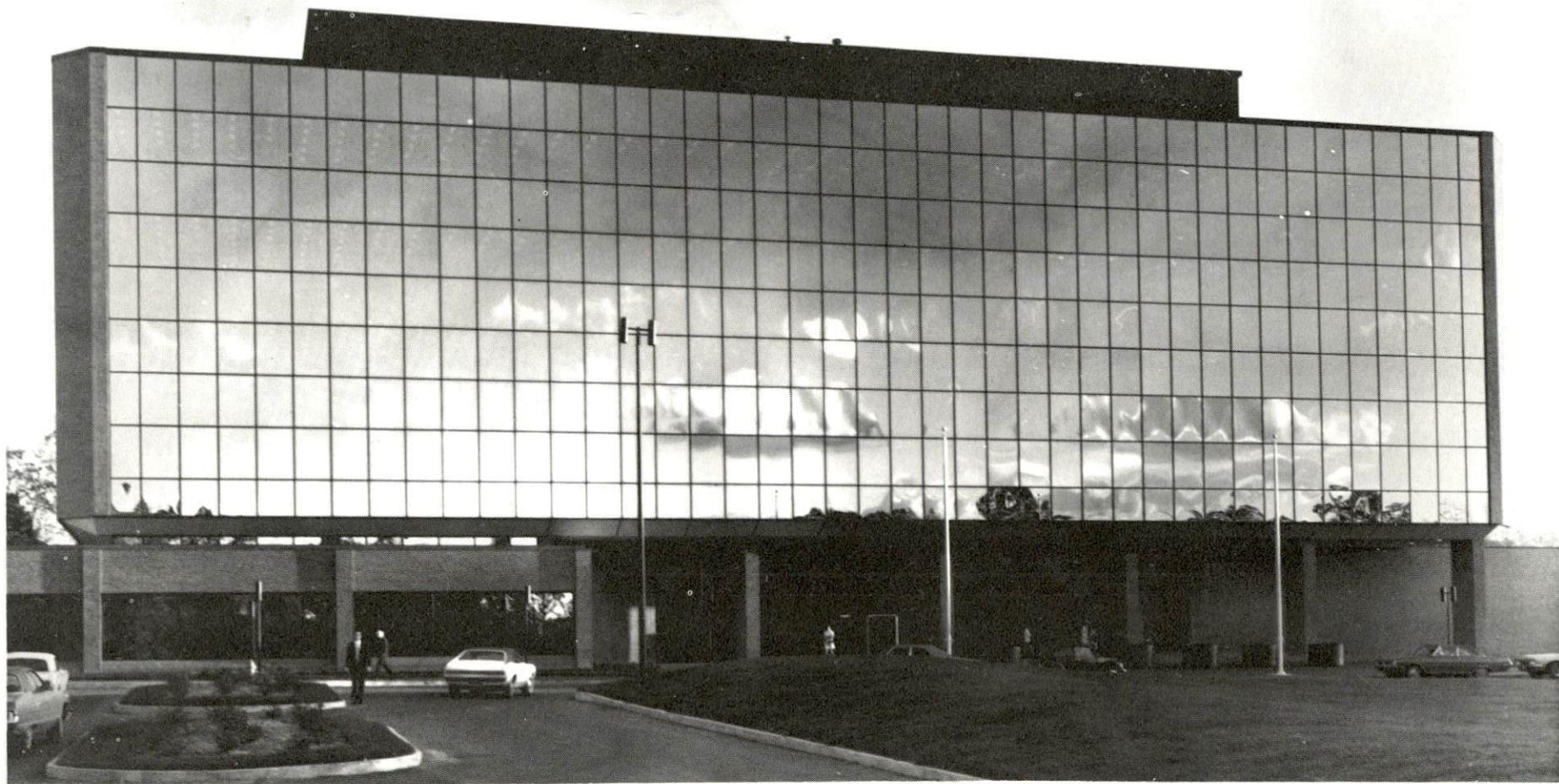


FITZPATRICK YARD - Russell  
RACELAND CAR YARDS

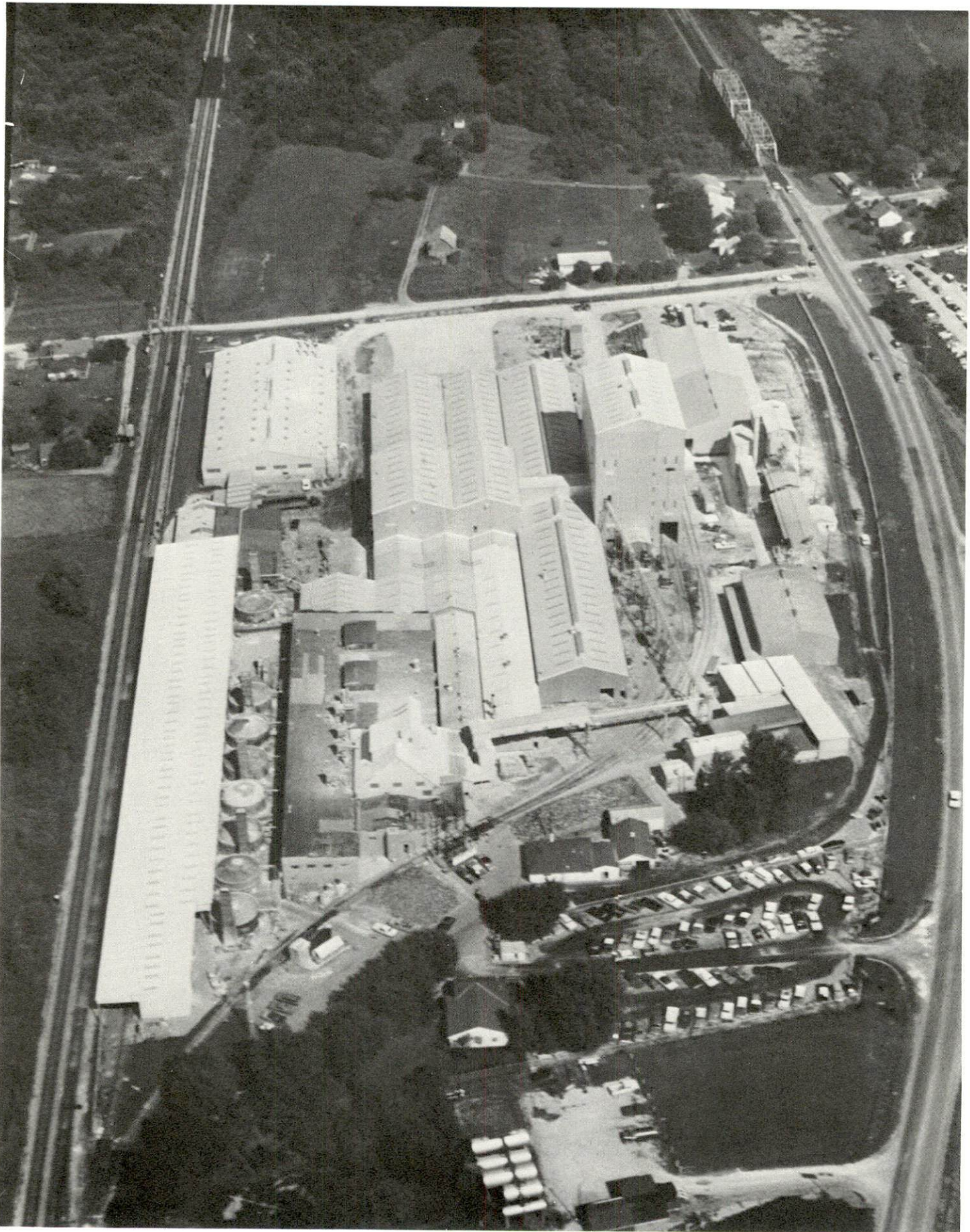




NATIONAL MINE SERVICE COMPANY



ASHLAND OIL'S NEW EXECUTIVE HEADQUARTERS



CHARLES TAYLOR SONS CO.  
DIVISION OF NATIONAL LEAD CO.  
South Shore

ESTIMATED MALE LABOR SUPPLY  
GREENUP COUNTY LABOR MARKET AREA

<u>Area</u>	<u>Current</u>			<u>Future</u>	
	<u>Total</u>	<u>Not in Labor Force</u>	<u>Unemployed</u>	<u>Under- employed</u>	<u>Reaching 18 yrs. of age before 1982</u>
Labor Market					
Area	7,260	3,630	1,930	1,700	6,209
Greenup	1,030	0	580	450	1,865
Boyd	5,190	3,630	850	710	2,613
Carter	690	0	400	290	1,069
Lewis	350	0	100	250	662

Sources: Kentucky Department for Human Resources, Kentucky Labor Supply Estimates by County, 1975. Kentucky Department of Commerce, Future Labor Supply before 1982.

ESTIMATED FEMALE LABOR SUPPLY  
GREENUP COUNTY LABOR MARKET AREA

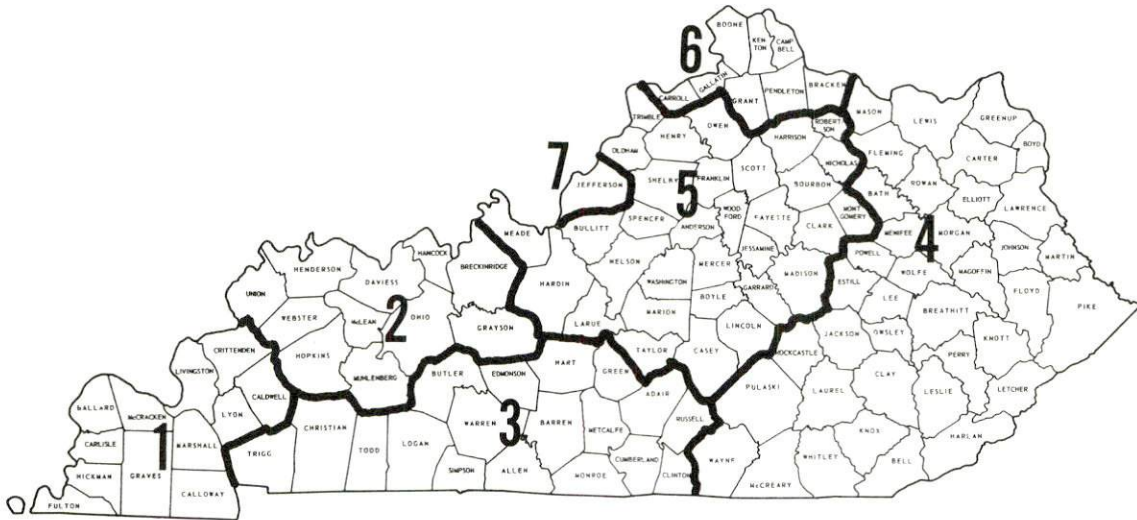
<u>Area</u>	<u>Current</u>			<u>Future</u>	
	<u>Total</u>	<u>Not in Labor Force</u>	<u>Unemployed</u>	<u>Under- employed</u>	<u>Reaching 18 yrs. of age before 1982</u>
Labor Market					
Area	8,220	6,020	470	1,730	5,921
Greenup	780	160	120	500	1,803
Boyd	5,540	4,540	180	820	2,458
Carter	1,520	1,200	90	230	995
Lewis	380	120	80	180	665

Sources: Kentucky Department for Human Resources, Kentucky Labor Supply Estimates by County, 1975. Kentucky Department of Commerce, Future Labor Supply before 1982.

## WAGES

Occupational wage rates for specific industries are usually not available to most government agencies, and wage data furnished to state employment agencies by individual industrial employers is protected from disclosure by federal law. The most reliable up-to-date wage information can be obtained by direct contact with local employers.

Associated Industries of Kentucky, a voluntary organization of Kentucky businesses, regularly collects occupational wage rates and fringe benefits data from participating member firms. Data is compiled for over 127 clearly defined office, production, and service occupations. Tabulations are published for seven regions of Kentucky, as shown on the map below. It should be noted that the data may be weighted by the preponderance of firms in the larger cities and may be somewhat higher than the rates paid in the smaller communities. Data from these tabulations are available, upon request, from the Kentucky Department of Commerce, Frankfort, Kentucky 40601.



Associated Industries of Kentucky Area Wage Surveys

PER CAPITA PERSONAL INCOME

<u>Area</u>	<u>1973</u>	<u>1969</u>	<u>Percent Change</u>
Greenup County	\$3,765	\$2,391	57.5
Labor Market Area Range	\$2,439 - 4,197	\$1,744 - 3,261	N.A.
Kentucky	4,050	2,894	39.9
U. S.	5,041	3,733	35.1

Sources: U. S. Department of Commerce, Office of Business Economics, Survey of Current Business, August, 1974. U. S. Department of Commerce, Bureau of Economic Analysis, April, 1975.

## TRANSPORTATION

### Rail

Line serving Flatwoods, Greenup, Raceland, Russell, South Shore, Worthington and Wurtland - The Chessie System

Services - 20 eastbound and 20 westbound freights daily; switching facilities, siding space for 12,200 cars in Russell; refrigeration and heating services in Russell. Nearest piggyback facilities are located in Huntington, West Virginia. Passenger service is provided by Amtrak at Ashland.

For details on routing, schedules, rates, and services, contact:

Real Estate and Industrial Development  
The Chessie System  
2 North Charles Street  
Baltimore, Maryland 21201  
(301) 237-2754

### Highways

Kentucky Highways 1, 2, 7, 207, and 784 serve Greenup County. Construction on U. S. Highway 23, a four-lane highway that parallels the Ohio River from Ashland, Kentucky, to Portsmouth, Ohio, is nearly completed. Only a 2 mile section from South Shore to the Portsmouth bridge is still under construction. All of the major towns in Greenup County are located along this new highway. Interstate 64 is located 22 miles south of Greenup via U. S. Highway 23.

### Truck Service

#### Company

#### Home Office

#### Greenup County

Associated Transport, Inc.

380 Madison Avenue

New York, New York 10017

Bell Lines, Inc.

6414 McCorkle Avenue, S.E.

Charleston, West Virginia 25304

Commercial Motor Freight, Inc.

3400 Refugee Road

Columbus, Ohio 43227

Hogan Storage & Transfer Co.

721 East Fourth Avenue

Williamson, West Virginia 25661

W. J. Maier Storage Co.

1653 Seventh Avenue

Huntington, West Virginia 25700

(Cont.)

<u>Company</u>	<u>Home Office</u>
McLean Trucking Company	617 Waughtown Street Winston-Salem, North Carolina 27107
Miami Transportation Co.	1220 Harrison Avenue Cincinnati, Ohio 45214
O. K. Trucking Company	3000 East Crescentville Cincinnati, Ohio 45241
Point Express, Inc.	P. O. Box 418 Columbus, Ohio 43216
Reinhardt Transfer Company	1410 Tenth Street Portsmouth, Ohio 45662
Smith's Transfer Corporation	P. O. Box 1000 Staunton, Virginia 24401
Suburban Motor Freight, Inc.	1100 King Avenue Columbus, Ohio 43216
<u>Other Freight Services</u>	<u>Shipping Center</u>
United Parcel Service	Ashland, 14 miles from Greenup

HIGHWAY MILES AND TRUCK TRANSIT TIME IN DAYS FROM  
GREENUP, KENTUCKY, TO SELECTED MARKET CENTERS

City	Delivery		City	Delivery	
	Highway Miles	Time TL		Highway Miles	Time TL
Atlanta, Ga.	481	2	Los Angeles, Calif.	2,293	5
Birmingham, Ala.	542	2	Louisville, Ky.	185	1
Chicago, Ill.	477	2	Nashville, Tenn.	323	2
Cincinnati, Ohio	191	1	New Orleans, La.	884	2
Cleveland, Ohio	319	1	New York, N. Y.	658	3
Detroit, Mich.	432	2	Pittsburgh, Pa.	289	1
Knoxville, Tenn.	288	2	St. Louis, Mo.	448	2

Source: Delivery Time Only - McLean Trucking Company, 617 Waughtown Street, Winston-Salem, North Carolina 27107.



Air

Local

	Ashland-Boyd County Airport	Greater Portsmouth Regional Airport
Location:	Worthington, Kentucky	12 miles northeast of South Shore
Runways:	1 paved	1 paved
Length:	5,600 feet	4,200 feet
Traffic		
Control:	Wind sock	Unicom
Lighting:	Sundown to sunrise	Beacons, runway lights during hours of darkness
Services:	Gas and oil, A & E service, charter, flight instruction, storage	80/87 and 100/130 octane, jet fuels; major repairs; car rentals and taxi, weather information, storage, charter, flight instruction
Air Freight		
Service:	Chartered air freight service can be arranged	Chartered air freight service can be arranged

Nearest Commercial

Location:	Tri-State Airport (Walker-Long Field) Huntington, West Virginia, 25 miles southeast of Greenup
Runways:	2 paved
Length:	6,500 feet; 3,000 feet
Traffic	
Control:	Tower
Lighting:	Beacon, runway
Services:	Allegheny and Piedmont Airlines, major repairs, 80/87 and 100/130 octane, jet fuel, limousine, taxi, car rental, restaurant, weather information, storage, flight instruction, charter
Air Freight	
Service:	Freight accepted on a space available basis

Bus - Service daily from Ashland, Kentucky, to Cincinnati, Ohio, through towns in Greenup County by Trailways

Taxi - 24-hour service within the county

Rental Services - Nearest rental service in Ashland, Kentucky, and Ironton and Portsmouth, Ohio

## Water

Since Greenup County is located on the Ohio River, river transportation is an important asset to the area. A 9-foot navigation channel is maintained along the Ohio River. Pittsburgh is approximately 330 river miles from Greenup, and Cairo, Illinois, 650 river miles. Eleven privately operated river terminals are located on the Kentucky shores of the Greenup County area.

## POWER AND FUEL

### Electricity

Company serving Bellefonte, Flatwoods, Greenup, Raceland, Russell,  
South Shore, Worthington, Wurtland, and parts of Greenup County along  
the Ohio River - Kentucky Power Company

Source of power - Kentucky Power Company

Total generating capacity - 1,065,000 KW

For industrial rates contact:

Kentucky Power Company  
340 15th Street  
Ashland, Kentucky 41101  
(606) 324-2144

Company serving portions of Greenup County - Grayson RECC

Source of power - East Kentucky Power Cooperative

Total generating capacity - 496,000 KW

For industrial rates contact:

Industrial Development Division  
East Kentucky Power Cooperative  
P. O. Box 707  
Winchester, Kentucky 40391  
(606) 744-4812

and/or

Grayson RECC  
P. O. Box 576  
Grayson, Kentucky 41143  
(606) 474-5136

## Natural Gas

Company serving Bellefonte, Flatwoods, Greenup, Raceland, Russell, South Shore, Worthington, and Wurtland - Columbia Gas of Kentucky, Inc.

Source of supply - Columbia Gas Transmission Company  
Size of transmission mains - 10 and 12 inches (supplier);  
10 and 12 inches (distributor)  
Distribution mains - 4 and 6 inches  
Distribution pressure - 10 - 150 psi  
Btu content - 1,020 per cubic foot; Specific gravity - .65  
For rates and supplies contact:

District Utilization Manager  
Columbia Gas of Kentucky, Inc.  
166 Walnut Street  
Lexington, Kentucky 40501  
(606) 255-3612

and/or

Division Manager  
Columbia Gas of Kentucky, Inc.  
1733 Winchester Avenue  
Ashland, Kentucky 41101  
(606) 324-7114

## Other Fuels

### Propane and butane

Ashland Oil and Refining Company  
1409 Winchester Avenue, Ashland, Kentucky 41101  
Quall's & Son Appliance  
326 - 10th Street, Ashland, Kentucky 41101  
Shepherd & Baker  
225 West Main Street, Greenup, Kentucky 41144  
Stan Harvey Gas Company  
106 South 2nd Street, Ironton, Ohio 45638  
Stan Harvey Gas Company  
Main Street, South Shore, Kentucky 41175  
Williams Energy Company  
203 Market, Portsmouth, Ohio 45662

Fuel oils

Distillate fuel oil -

Ashland Oil, Inc.

Ashland Drive, Ashland, Kentucky 41101

Chevron Oil Company

215 - 53rd Street, Ashland, Kentucky 41101

John Clark Gulf Oil Distributors

101 Wheatley Road, Ashland, Kentucky 41101

Little Sandy Gas & Oil

Walnut Street, Greenup, Kentucky 41144

Marathon Oil Company

2703 Galena Pike, West Portsmouth, Ohio 45662

Mobil Oil Corporation

2823 Galena Pike, West Portsmouth, Ohio 45662

Standard Oil Company, Inc. of Kentucky

U. S. Highway 23, South Shore, Kentucky 41175

Residual fuel oil - Arrangements must be made with the refinery.

Low sulphur content coal - Available locally.

## WATER AND SEWERAGE

### Water

Company serving Russell and Bellefonte - Russell Water Works\*  
P. O. Box 394  
Russell, Kentucky 41169  
(606) 836-6644

Source - 7 wells  
Treatment plant capacity - 1,000,000 gpd  
Average daily consumption - 500,000 gallons  
Peak daily consumption - 900,000 gallons  
Type treatment - Chlorination, coagulation, filtration  
Storage capacity - 1,721,000 gallons  
Size lines - 4, 6, 8, and 12 inches  
Average pressure - 65 psi  
Average temperature - 16 degrees centigrade

### MONTHLY WATER RATES FOR WHOLESALE AND INDUSTRIAL CONSUMERS

First	3,000 gallons	\$1.70 per M gallons
Next	3,000 gallons	.80 per M gallons
Next	69,000 gallons	.60 per M gallons
Next	150,000 gallons	.55 per M gallons
Next	225,000 gallons	.48 per M gallons
Next	300,000 gallons	.46 per M gallons
Next	750,000 gallons	.45 per M gallons
Bulk		.40 per M gallons

Tap-on charge: Actual cost of installation

---

\*An 8-inch water main is being extended to Raceland. When completed the City of Raceland will purchase treated water from Russell.

Company serving Raceland - Raceland Water Works\*  
City Hall  
Raceland, Kentucky 41169  
(606) 836-8621

Source - 2 wells  
Average daily consumption - 120,000 gallons  
Type treatment - Chlorination for wells  
Storage capacity - 100,000 gallons  
Size lines - 6 and 8 inches  
Average pressure - 90 psi

MONTHLY WATER RATES FOR WHOLESALE  
AND INDUSTRIAL CONSUMERS

First	2,000 gallons	\$5.78 (Minimum)
Next	1,000 gallons	.99 per M gallons
Next	20,000 gallons	.63 per M gallons
Next	150,000 gallons	.54 per M gallons
Over	173,000 gallons	.45 per M gallons

Tap-on charge: \$157.50

Company serving Flatwoods - Flatwoods Water Works\*\*  
City Hall  
Flatwoods, Kentucky 41139  
(606) 836-9661

Source - Purchases water from Russell Water Works  
Average daily consumption - 472,000 gallons  
Peak daily consumption - 500,000 gallons  
Storage capacity - 550,000 gallons  
Size lines - 2 to 8 inches  
Average pressure - 60 psi

MONTHLY WATER RATES FOR WHOLESALE  
AND INDUSTRIAL CONSUMERS

First	2,000 gallons	\$3.80 (Minimum)
Next	1,000 gallons	.77 per M gallons
Over	3,000 gallons	.55 per M gallons

Tap-on charge: \$125

---

\*The Russell Water Works is extending an 8-inch main to Raceland. When completed, Raceland will purchase treated water from Russell.

\*\*A 12-inch water main and a booster pump station are being installed to improve the distribution system.

Company serving Wurtland - Wurtland Water and Sewer Company  
 City Hall  
 Wurtland, Kentucky 41144  
 (606) 836-9166

Source - Wells  
 Treatment plant capacity - 138,000 gpd  
 Average daily consumption - 70,000 gallons\*  
 Type treatment - Iron removal, filtration, aeration, chlorination  
 Storage capacity - 173,000 gallons  
 Size lines - 3, 6, and 8 inches  
 Average pressure - 70 psi

MONTHLY WATER RATES FOR WHOLESALE  
 AND INDUSTRIAL CONSUMERS

First	2,000 gallons	\$4.25 (Minimum)
Next	2,000 gallons	1.75 per M gallons
Next	6,000 gallons	1.50 per M gallons
Next	10,000 gallons	1.25 per M gallons

Tap-on charge: \$100

Company serving Worthington - Worthington Water and Sewer Works\*\*  
 City Hall  
 Worthington, Kentucky 41183  
 (606) 836-6821

Source - Wells  
 Treatment plant capacity - 244,000 gpd  
 Average daily consumption - 130,000 gallons  
 Peak daily consumption - 150,000 gallons  
 Type treatment - Sedimentation, filtration, chlorination  
 Storage capacity - 250,000 gallons  
 Size lines - 2, 4, 6, and 8 inches  
 Average pressure - 54 psi

MONTHLY WATER RATES FOR WHOLESALE  
 AND INDUSTRIAL CONSUMERS

First	2,000 gallons	\$2.50 per M gallons
Next	1,000 gallons	1.10 per M gallons
Next	3,000 gallons	.95 per M gallons
Next	5,000 gallons	.75 per M gallons
Next	10,000 gallons	.55 per M gallons
All over	21,000 gallons	.45 per M gallons

Tap-on charge: \$150

\*Estimated from consumption in December, 1975.

\*\*The city is planning improvements to the water system which will improve fire protection.



Company serving Greenup - Greenup Water and Sewer Commission\*  
City Hall  
Greenup, Kentucky 41144  
(606) 473-9714

Source - Little Sandy River  
Treatment plant capacity - 500,000 gpd  
Average daily consumption - 170,000 gallons  
Type treatment - Flocculation, sedimentation, chlorination, filtration,  
fluoridation  
Storage capacity - 975,000 gallons  
Size lines - 6, 8, and 10 inches  
Average pressure - 90 psi

MONTHLY WATER FEES

First	2,000 gallons	\$ 7.75
Next	2,000 gallons	5.90
Next	4,000 gallons	9.60
Next	4,000 gallons	6.80
Next	12,000 gallons	12.00
Over	24,000 gallons	.80 per M gallons

Tap-on charge: \$100

---

\*The water system has been recently upgraded, including three new storage tanks.

Company serving South Shore - South Shore Water Works Company\*  
809 Main Street  
South Shore, Kentucky 41175  
(606) 932-3531

Source - 3 wells  
Treatment plant capacity - 925,000 gpd\*\*  
Average daily consumption - 400,000 gallons  
Peak daily consumption - 500,000 gallons  
Type treatment - Sedimentation and chlorination  
Storage capacity - 211,000 gallons  
Size lines - 4, 6, and 8 inches  
Average pressure - 75 psi  
Average temperature - 58 degrees F.

MONTHLY WATER RATES FOR WHOLESALE  
AND INDUSTRIAL CONSUMERS

---

First	1,000 gallons	\$2.50 (Minimum)
Next	9,000 gallons	1.28 per M gallons
Next	20,000 gallons	.75 per M gallons
Next	20,000 gallons	.50 per M gallons
Over	50,000 gallons	.35 per M gallons

There is no tap-on charge, but there is an extension fee to customers outside the city limits.

Surface water sources - Ohio River and Little Sandy River  
Average discharge - Ohio River at Greenup Dam, 95,100 cfs (7 years, USGS); Little Sandy River at Grayson, 479 cfs (37 years, USGS)  
Expected ground water yield - 500 to 1,000 gpm along the Ohio River; 50 to 200 gpm in a small portion of eastern Greenup County; 5 to 50 gpm over remainder of county

---

\*Also serves rural areas surrounding South Shore.

\*\*A new 250 gpm water treatment unit has been installed to treat water obtained from an additional well.

Sewerage

Company serving Flatwoods and Russell - Flatwoods Sewage Treatment Plant\*  
City Hall  
Flatwoods, Kentucky 41139  
(606) 836-9661

Design population - 8,000  
Average daily flow - At capacity  
Treatment - Primary  
Type treatment - Clarifier, drying beds, digester  
Treated effluent discharged into - Ohio River  
Size of sanitary mains - 8 to 15 inches  
Rates - 85 percent of monthly water bill  
Tap-on charge: \$35

Company serving Raceland - Raceland Water Works  
City Hall  
Raceland, Kentucky 41169  
(606) 836-8621

Design capacity - 200,000 gpd  
Average daily flow - 175,000 gallons; Treatment - Primary  
Type treatment - Digester, drying beds, chlorination  
Treated effluent discharged into - Pond Run Creek  
Size of sanitary mains - 8 and 12 inches; Size of storm mains - 18 inches  
Rates (Based on monthly water consumption) -

First	2,000 gallons	\$6.20 (Minimum)
Next	1,000 gallons	1.30 per M gallons
Next	20,000 gallons	.82 per M gallons
Next	150,000 gallons	.70 per M gallons
All over	173,000 gallons	.58 per M gallons

Tap-on charge: \$275

---

\*Flatwoods, Russell and Raceland plan to put in a new combined system with primary and secondary treatment. It will be large enough to serve Wurtland and Worthington.

Company serving Bellefonte - Sanitation District #1  
City Hall  
Russell, Kentucky 41169  
(606) 836-6644

Design capacity - 750,000 gpd  
Average daily flow - 250,000 gallons  
Treatment - Primary and secondary  
Type treatment - Aeration, clarifier, drying beds, settling basins  
Treated effluent discharged into - Ohio River  
Size of sanitary mains - 8 inches and larger  
Rates - 300 percent of water bill  
Tap-on charge: \$125

Company serving Worthington - Worthington Water and Sewer Works  
City Hall  
Worthington, Kentucky 41183  
(606) 836-6821

Design capacity - 200,000 gpd  
Average daily flow - 120,000 gallons; Treatment - secondary  
Type treatment - Aeration, clarifier  
Treated effluent discharged into - Ohio River  
Size of sanitary mains - 8, 10, and 12 inches  
Size of storm mains - 10 inches  
Monthly fees (based on water consumption) -

First	2,000 gallons	\$2.85
	2,500 gallons	4.05
	5,000 gallons	5.07
	10,000 gallons	6.47
	15,000 gallons	7.87
	21,000 gallons	9.54
All over	21,000 gallons	.20 per M gallons

Tap-on charge: \$15

Company serving Greenup - Greenup Water and Sewer Commission\*  
City Hall  
Greenup, Kentucky 41144  
(606) 473-9714

Design capacity - 400,000 gpd  
Average daily flow - 200,000 gallons; Treatment - Primary and secondary  
Type treatment - Aeration, clarifier, chlorination  
Treated effluent discharged into - Little Sandy River  
Size of sanitary mains - 6 and 8 inches  
Size of storm mains - 6, 8, 10, and 12 inches  
Rates - 75 percent of monthly water bill  
Tap-on charge: \$100

Company serving Wurtland - Wurtland Water and Sewer Company\*\*  
City Hall  
Wurtland, Kentucky 41144  
(606) 836-9166

Design capacity - 100,000 gpd  
Average daily flow - Near capacity; Treatment - Secondary  
Type treatment - Aeration, activated sludge  
Treated effluent discharged into - Uhlen's Branch  
Size of sanitary mains - 8 to 12 inches  
Rates - 100 percent of monthly water bill  
Tap-on charge: \$100

Company serving South Shore - South Shore Municipal Treatment Plant  
City Hall  
South Shore, Kentucky 41175  
(606) 932-3311

Design capacity - 210,000 gpd  
Average daily flow - 100,000 gallons; Treatment - Secondary  
Type treatment - Extended aeration, clarifier, chlorination  
Treated effluent discharged into - Ohio River  
Size of sanitary mains - 6, 8, and 10 inches  
Size of storm mains - 16, 20, and 32 inches  
Rates - 90 percent of monthly water bill  
Tap-on charge: \$25

---

\*Greenup extended sanitary mains to serve all residences within the city limits. One new lift station has been added, and the three existing lift stations have been upgraded.

\*\*A 201 Facilities study is underway.

## CLIMATE

### Greenup County

#### Temperature

Annual mean (30-year record)	54.6 degrees
Average annual 1974	54.7 degrees
Record highest, August, 1918 (86-year record)	106.0 degrees
Record lowest, February, 1899 (86-year record)	- 27.0 degrees
Normal heating degree days (30-year record)	4,817
(Heating degree day totals are the sums of negative departures of average daily temperatures from 65 degrees F.)	

#### Precipitation

Mean annual total (30-year record)	38.44 inches
Mean annual snowfall (87-year record)	24.10 inches
Total precipitation 1974	41.40 inches
Mean number days precipitation (.01 inch or more) (86-year record)	142
Average number days thunderstorms (76-year record)	44

#### Relative Humidity

7 a. m.	80 percent (60-year record)
1 p. m.	56 percent (31-year record)
7 p. m.	68 percent (60-year record)

Source: U. S. Department of Commerce, Environmental Science Services Administration, Climatological Data, 1974. Station of record: Parkersburg, West Virginia.

LOCAL GOVERNMENT

City

Bellefonte

Structure - Chairman, Board of Trustees - 2-year term; 4 trustees -  
2-year terms

Budget 1976 - General Fund \$ 20,775

Flatwoods

Structure - Mayor - 4-year term; 12 councilmen - 2-year terms

Budget 1976 - General Fund \$407,440

Water and Sewer Fund 534,615

Fees and licenses - Occupational licenses vary from \$25 to \$200 annually;  
unloading license \$25

Greenup

Structure - Mayor - 4-year term; 6 councilmen - 2-year terms

Budget 1975 - General Fund \$ 78,220

Water and Sewer Fund 131,040

Fees and licenses - Franchise and unloading licenses \$25 annually;  
auto sticker fee \$10 annually

Raceland

Structure - Mayor - 4-year term; 6 councilmen - 2-year terms

Income 1974-75 - General Fund \$ 55,710

Water and Sewer Fund 145,860

Fees and licenses - Auto sticker fee \$10 annually

Russell

Structure - Mayor - 4-year term; 6 councilmen - 2-year terms

Income 1974-75 - General Fund \$181,505

Water and Sewer Fund 232,636

Fees and licenses - Unloading licenses for vehicles selling directly to  
the customer \$25 - \$35 annually

South Shore

Structure - Chairman, Board of Trustees - 2-year term; 4 trustees -  
2-year terms

Budget 1975-76 - General Fund	\$ 42,160
Sewer Fund	40,620

Fees and licenses - Occupational licenses vary from \$5 to \$25 annually;  
motor vehicle tax \$5 annually

Worthington

Structure - Mayor - 4-year term; 6 councilmen - 2-year terms

Budget 1975 - General Fund	\$ 36,560
Water and Sewer Fund	77,105

Fees and licenses - Auto sticker fee \$6.50 annually

Wurtland

Structure - Mayor - 2-year term; 5 councilmen - 2-year terms

Receipts 1975 - General Fund	\$ 36,600
Water and Sewer Fund	73,200

County

Structure - County Judge - 4 year term; 3 magistrates - 4-year terms

Budget 1975-76 - General Fund \$370,568; Road Fund \$47,000

Assessed Value of Property, 1975-76

<u>Classes of Property</u>	<u>Greenup County</u>
Real Estate	\$194,123,760
Tangibles	40,592,095

Property Taxes

Land and buildings are taxed by the state and may be taxed by local jurisdictions. The state rate is \$0.015 per \$100 of assessed valuation.

Tangible personal property owned by manufacturers (automobiles, trucks, finished goods, office furniture, office equipment) is taxed by the state at \$0.15 per \$100 and may be taxed by local jurisdictions.

Manufacturing machinery, raw materials inventories, pollution control equipment and goods in process inventories are not subject to local taxation. The state rate is only \$0.15 per \$100.



Property stored in public warehouses is not subject to local taxation.  
The state rate is only \$0.015 per \$100.

All property is assessed at 100 percent of fair cash value.

Local Property Tax Rate Per \$100 of Assessed Valuation, 1975\*

<u>Taxing Jurisdiction</u>	<u>Bellefonte</u>	<u>Flatwoods</u>	<u>Greenup</u>	<u>Raceland</u>	<u>Russell</u>
County	\$ .174	\$ .174	\$ .174	\$ .174	\$ .174
School	.734	.734	.638	.879	.734
City	.130	.250	.275	.200	.275

<u>Taxing Jurisdiction</u>	<u>South Shore</u>	<u>Worthington</u>	<u>Wurtland</u>	<u>Greenup County</u>
County	\$ .174	\$ .174	\$ .174	\$ .174
School	.638	.879	.638	.638
City	.185	.170	-	

Special (not county wide): South Shore Fire Protection - \$ .030  
Wurtland Fire Protection - .100

Planning and Zoning

City agencies\*\* - Bellefonte Planning Commission and Flatwoods Planning Commission

Joint agency - Greenup County Joint Planning Commission includes Greenup, Raceland, Russell and South Shore

Zoning enforced - Bellefonte, Flatwoods, Raceland and Russell

Subdivision regulations enforced - (in city only) Bellefonte, Flatwoods, Raceland and Russell

Local codes enforced - Bellefonte, Flatwoods, Raceland and Russell

Mandatory state codes enforced - Plumbing, National Fire Protection Association Code, National Building Code (for major buildings and residential construction containing more than 12 bedrooms per building)

\*Kentucky Department of Revenue, Kentucky Property Tax Rates, 1975; Local school systems.

\*\*Presently the Worthington Planning Commission is inactive.

Safety

<u>Police</u>	<u>Bellefonte</u>	<u>Flatwoods</u>	<u>Greenup</u>
Total staff	1 full time 2 part time	9 full time 5 part time	2 full time
Radio patrol cars	3	3	1
	<u>Raceland</u>	<u>Russell</u>	<u>South Shore</u>
Total staff	4 full time 1 part time	5 full time 3 part time	2 full time 3 part time
Radio patrol cars	2	4	2
	<u>Worthington</u>	<u>Wurtland</u>	<u>Greenup County</u>
Total staff	1 full time 3 part time	1 full time 1 part time	6 full time 2 part time
Radio patrol cars	1	1	6

<u>Fire</u>	<u>Flatwoods</u>	<u>Greenup</u>	<u>Raceland</u>	<u>Russell</u>
American Insurance Association Fire Rating	8	8	7	7 and 9
Volunteers	30	25	36	25

	<u>South Shore</u>	<u>Worthington</u>	<u>Wurtland</u>
American Insurance Association Fire Rating	8 and 9	7	8 and 9
Volunteers	20	20	20

Solid Waste

	<u>Bellefonte</u>	<u>Flatwoods</u>	<u>Greenup</u>	<u>Raceland</u>
Type service	Private	Municipal	Private	Private
Fee charged:				
residential				
(monthly)	\$2.50	\$2.25	\$3.00	\$2.50
business		Contract	Contract	Contract
industrial		Contract	Contract	Contract
Collection frequency:				
residential	Weekly	Weekly	Weekly	Weekly
business		Contract	Contract	Contract
industrial		Contract	Contract	Contract
Trash pickup	None	None	Weekly	None
Disposal method	Landfill	Landfill	Landfill	Landfill
	<u>Russell</u>	<u>South Shore</u>	<u>Worthington</u>	<u>Wurtland</u>
Type service	Private	Private	Private	Private
Fee charged:				
residential				
(monthly)	\$3.00	\$3.00	\$1.75	\$3.00
business	Contract	Contract	Contract	Contract
industrial	Contract	Contract	Contract	Contract
Collection frequency:				
residential	Weekly	Weekly	Weekly	Weekly
business	Contract	Contract	Contract	Contract
industrial	Contract	Contract	Contract	Contract
Trash pickup	On call	Weekly	On call	Weekly
Disposal method	Landfill	Landfill	Landfill	Landfill

## EDUCATION

### Public Schools

	<u>Raceland Independent</u>	<u>Russell Independent</u>	<u>Greenup County</u>
Total Enrollment			
(Fall, 1975)	920	3,238	4,421
Elementary	470	1,565	2,835
Junior High		575	630
High School	450	1,098	956
Student-Teacher Ratio			
Elementary	22-1	27-1	24-1
Junior High	24-1	28-1	24-1
High School	21-1	24-1	23-1
High School		26-1	26-1
Accreditation		Southern Association of Colleges and Schools	
Percent High School			
Graduates to College	35.2	47.8	21.7
Expenditures Per Pupil			
(1974-75)	\$677.11	\$612.67	\$587.16
Bonded Indebtedness,			
June 30, 1975	\$592,000	\$1,754,000	\$4,203,000

Area Colleges and Universities

<u>Name</u>	<u>Location</u>	<u>Distance from Greenup (miles)</u>	<u>Enrollment (Fall, 1975)</u>	<u>Highest Degree Conferred</u>
Ashland Community College	Ashland	14	1,407	Associate
Marshall University	Huntington, West Virginia	25	10,847	Accademic and Professional
Morehead State University	Morehead	55	7,318	Masters, Ph. D.*
Ohio State University Portsmouth Campus**	Portsmouth, Ohio	20	170	Academic and Professional
Ohio University Ironton Campus	Ironton, Ohio	10	369	***
Shawnee State Central Technical College**	Portsmouth, Ohio	20	1,613	Associate

\*Cooperative program with the University of Kentucky, Lexington, for a Ph. D. in education only.

\*\*A merger of Shawnee State Central Technical College and the Portsmouth Campus of Ohio State University is expected by January, 1977. The combined campuses will retain the name of Shawnee.

\*\*\*The campus serves as a 2- or 3-year preparatory school for a baccalaureate degree at Ohio University.

Vocational Schools

	<u>Nearest State School</u>	<u>Nearest Area Education Center</u>
Location	Ashland State Vocational- Technical School	Greenup County Area Vocational Education Center
Miles Distant	Ashland	South Shore
Curriculum	14 miles from Greenup Business and Office Education Cosmetology Practical Nursing Industrial Education Auto Body Repair Auto Mechanics Carpentry Drafting Electronics (Technology) Industrial Electricity Machine Shop Radio and TV Repair Tool and Die Making Welding	Industrial Education Auto Body Repair Auto Mechanics Building Trades Drafting Electricity Welding

Arrangements can be made to provide training in the specific production skills required by an industrial plant. Instruction may be conducted either in the vocational school or in the industrial plant, depending upon the desired arrangement and the availability of special equipment.

## HEALTH

### Local Medical Personnel

Physicians - 15  
Dentists - 7

### Hospitals

<u>General Hospital</u>	<u>Location</u>	<u>Beds</u>
Our Lady of Bellefonte Hospital	Russell	123
King's Daughters' Hospital	Ashland	345

#### Our Lady of Bellefonte Hospital

General hospital facilities - X-ray, surgery, outpatient laboratory, emergency, EKG, pharmacy, laboratory, recovery rooms, pediatrics, physical therapy

Medical staff - 15 doctors on the active staff, 25 doctors on the courtesy staff, 30 registered nurses, 16 licensed practical nurses

#### King's Daughters' Hospital

General hospital facilities - Emergency room, 7 operating rooms, recovery room, dental surgery room, X-ray, laboratory, OB section, pediatrics, intensive care unit, cardiac care unit, 17-bed psychiatric unit

Medical staff - 54 doctors on active staff, 14 doctors on courtesy staff, 14 dentists, 2 pathologists, 117 registered nurses (full time), 15 registered nurses (part time), 50 licensed practical nurses, 13 nurses' assistants, 6 emergency medical technicians, 6 technicians

### Other Medical Facilities

The South Shore area is served by four hospitals in Portsmouth, Ohio.

### Ambulance Service

Most of the ambulance service in Greenup County is provided by the local funeral homes. However, there are private ambulance services in both Ashland, Kentucky, and Portsmouth, Ohio, that will serve Greenup County.

Nursing Homes

	<u>Number</u>	<u>Beds</u>
Intermediate care homes	2	90*
Personal care homes	1	83

Public Health

Facility - Greenup County Health Department

Staff - 1 receptionist, 4 clerks (1 part time), 5 registered nurses,  
2 sanitarians, 1 health officer (as consultant only), and 3 clinicians  
(part time)

---

\*One nursing home is adding 40 beds to its present facilities.



## OTHER LOCAL FACILITIES

### Communications

Telephone - General Telephone Company of Kentucky  
Services - Direct dialing and standard services

Telegraph - Western Union Telegraph  
Services - Company has office in Ashland

Postal - U. S. Post Offices are located in Flatwoods, Greenup, Raceland (branch), Russell, South Shore, Worthington, and Wurtland.

Newspapers - The Greenup News, Greenup  
Weekly and circulation - 6,500

The Times Trader, Russell  
Weekly and circulation - 18,000

The Greenup Sentinel, Greenup  
Weekly and circulation - 8,000

Other papers received from - Ashland, Louisville and Lexington, Kentucky; Huntington, West Virginia; Cincinnati, Ohio

Radio -

Stations received from - Ashland and Grayson, Kentucky; Ironton and Portsmouth, Ohio; Huntington, West Virginia

Television -

Cable service

Reception from - Huntington and Charleston, West Virginia; Lexington, Kentucky

Kentucky Educational Television - Ashland transmitter, Channel 25

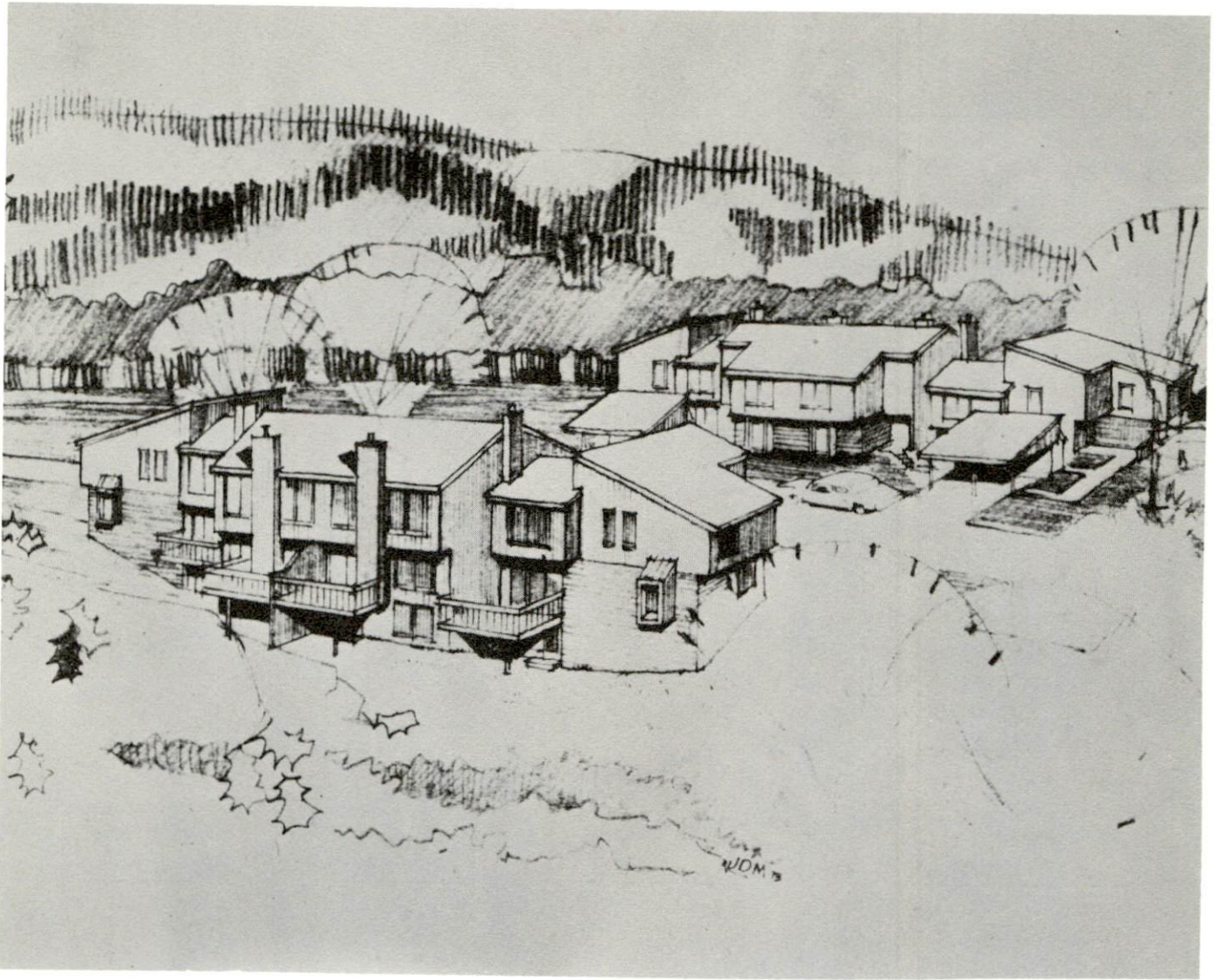
### Library Services

Public library - Greenup County Public Library, Greenup (headquarters)  
Size collection - 49,000 volumes

Circulation, 1975 - 260,000

Services - Bookmobile, reference material, meeting room, periodicals, films, paintings, records, recorder, tapes, interlibrary loans, story hour for children, and special services to special education classes, residents of the nursing home and the home for emotionally disturbed boys

Branch libraries are located in Flatwoods and South Shore.



CONDOMINIUM COMPLEX IN GREENUP COUNTY



GREENUP COUNTY HIGH SCHOOL

Religious Institutions

Number of churches - Approximately 100

Denominations - Baptist, Christian, Church of Christ, Church of God, Church of God of Prophecy, Jehovah's Witnesses, Methodist, Nazarene, Pentecostal, Pilgrim Holiness, Presbyterian, Roman Catholic, Seventh Day Adventist

Nearest synagogues - Ashland, Kentucky; Portsmouth, Ohio

Congregations - Agudath Achim (reform); Bere Abraham (reform)

Financial Institutions

<u>Banks</u>	<u>Assets</u>	<u>Deposits</u>	<u>Statement Date</u>
First & Peoples Bank (Main office in Russell with branches at Flatwoods, Greenup, Russell and South Shore)	\$40,717,216.57	\$35,957,752.42	12/31/75
<u>Savings and Loan Associations</u>	<u>Assets</u>	<u>Shared Accounts</u>	<u>Statement Date</u>
Home Federal Savings & Loan Association (Flatwoods)*	\$28,217,416.08	\$25,107,348.02	6/30/75
Russell Federal Savings and Loan Association (Russell)	\$12,544,364.24	\$11,312,067.76	12/31/75

Hotels and Motels

Total number - 3  
Total units - 174

\*Main office in Ashland, Kentucky, with branch at Flatwoods.

## Clubs and Organizations

Business and Civic - Jaycees, Kiwanis, Lions, Optimists, Rotary, Greenup County Peace Officers Association, P. T. A., Fish and Game Association

Fraternal - American Legion, Masonic Lodge

Women's - Eastern Star, Homemakers, Garden Clubs, War Mothers, American Legion Auxiliary for Women, Woman's Clubs, Firemens' Auxiliary

Youth - Boy Scouts, Girl Scouts, Brownies, Cub Scouts, 4-H Club, Little League, Babe Ruth League, Pony League, YMCA, FHA, FFA, FTA, Boys' Club, Campfire Girls, Greenup Big Brother Program



GREENBO LAKE STATE RESORT PARK

## RECREATION

### Local

A wide variety of recreational activities are available to Greenup County residents, including numerous county and city parks which are located throughout the county. In addition to these existing parks, new parks are nearing completion in Flatwoods and South Shore; and new recreational facilities are planned for Raceland, Worthington and Wurtland. Little League football, basketball and baseball programs furnish activities for youths. Boat ramps and docks in Greenup County provide access to the Ohio River. Two private swimming clubs and a country club with a swimming pool, golf course and tennis courts are located in Greenup County.

Greenbo Lake State Resort Park, near Greenup, is a 3,330-acre park with lodge, dining and camping facilities. The 225-acre Greenbo Lake provides boating, fishing and swimming opportunities. A dock, bathhouse, and beach are located on the lake; fishing and paddle boats may be rented. In addition, the park has a lodge pool, horseback riding, hiking trails, playground and miniature golf course. Located in the park, the Buffalo Furnace, typical of many iron furnaces in the area, was in operation until 1875.

### Area (Within 25 miles)

Carter Caves State Resort Park near Olive Hill, is well known for the caves, one of which is the home of the Social Bat, which is on the national list of vanishing species. Varieties of flowers and plants abound in this 1,000-acre park. Park accommodations include a lodge, cottages, dining room, gift shop, coffee shop and campsites near a grocery. Facilities for fishing, boating, hiking, horseback riding, golf, and swimming in the lodge pool or in 37-acre Smoky Valley Lake, contribute to making Carter Caves Park a popular tourist area. Grayson Lake State Park, near Grayson, features camping sites, a beach, fishing and a dock on 2,712-acre Grayson Lake.

Nearby areas of historic interest include Central Park which contains several prehistoric mounds, the McGuffey School Museum, a replica of the Kentucky mountain log cabin school where William Holmes McGuffey taught while working on the readers and the Wee House in the Wood, the museum home of Jean Thomas, the famous Traipsin' Woman, all located in Ashland. In addition, Ashland is the home of the Greater Ashland Center for the Performing Arts which brings musical and theatrical programs to the region. Additional cultural programs as well as sports events are sponsored by colleges and groups in Ashland, Kentucky, Huntington, West Virginia, and Portsmouth, Ohio.

## COMMUNITY IMPROVEMENTS

### Industrial:

National Mine Service Company has completed a new mining machinery plant that employs 315 people. In addition, Armco Steel Corporation's multi-million dollar expansion of its Greenup County production facilities is underway. The expansion will increase the production capacity by a total of 1.1 million tons of additional raw steel and the employment by more than 300 additional employees.

### Education:

The Russell Independent School District will open a vocational center, offering courses in eight subject areas, in the fall of 1976. Also, a new central office building and special education units will be opened for the same school year. Additions to the high school curriculum include phased English, consumer and career education, adaptive physical education, and model office and business education.

The Raceland Independent School District has just completed a new cafeteria at the Campbell Elementary School, remodeled the high school gym, and recently expanded the vocational business and office curriculum.

### Transportation:

U. S. Highway 23 is being upgraded. Only a 2-mile section of highway at South Shore remains to be completed. Currently a four-lane highway stretches along the Ohio River from Ashland to South Shore.

### Utilities:

#### Water Systems

The Greenup Water and Sewer Commission has extended water service to Argillite and plans to serve Lloyd in the near future. A new 500,000 gpd filtration plant serves these communities. Three new storage tanks have been erected. New 8-inch water mains and fire hydrants have been installed to improve Greenup's fire protection. In addition, Greenup has applied for funds to extend service farther out Argillite Road to Greenbo Lake State Resort Park.

A new 12-inch water main and booster pump station are being installed to improve water distribution throughout Flatwoods.

The Russell Water Works is extending an 8-inch water main to Raceland. When completed, Raceland will purchase treated water from Russell.

South Shore Water Works has installed a 250 gpm water treatment unit to treat water obtained from an additional well. Construction of a 150,000-gallon elevated storage tank is in progress.

Worthington is planning improvements to the water system which will improve fire protection. Construction will include the installation of new 8-inch water mains, gate valves, fire hydrants, and a new filter.

### Sewer Systems

The Greenup County Environmental Commission is constructing a new treatment plant that will serve Flatwoods, Raceland and Russell. The facilities will be large enough to serve Worthington and Wurtland also. EPA has already approved the 201 Facilities Plan. In addition, Flatwoods has applied for funds to extend the sewer lines to outlying areas of Flatwoods that are not presently receiving service.

The \$3.3 million Sanitation District #1 is now in operation. It provides service to Kenwood and Bellhaven, and residential areas of Bellefonte and Russell.

Greenup extended sanitary mains to serve all areas within the city limits. One new lift station was added and the three existing lift stations were upgraded.

A 201 Facilities Study of the Wurtland sewerage facilities is underway.

### Community Improvements

#### Bellefonte

Resurfacing of all city streets will soon be completed

#### Flatwoods

Two 40-unit apartment buildings and two supermarkets are under construction. Several new subdivisions have opened. A new branch library building has been constructed. A rest home with 120 beds is planned. The city plans to install turning lanes and signal lights at a busy downtown intersection to relieve congestion. A swimming pool and tennis courts will be completed during the summer of 1976 and the city plans to add basketball courts; shelter house and picnic areas.



### Greenup

Four city streets are being paved and a new lighting system is being installed throughout the city.

### Raceland

A recreation board has been formed to develop a new city park. The city building is being renovated. A new subdivision has opened recently.

### Russell

A new fire station will be completed by the end of 1976. The city purchased a 1,200 gpm pumper. A \$400,000 Mormon Church building is nearing completion. Development of several subdivisions is continuing.

### South Shore

Taylor Refractories, Division of National Lead Industries, will begin construction on a \$1.5 million addition to its plant in the fall of 1976. The expansion is expected to add 30 to 40 new jobs. Forty-eight units of public housing are planned. An RCA Earth Receiving station was set up in the city in order to provide special television programs to cable television residents in the Portsmouth area. The construction of a new city park is in progress. The baseball diamond and horse arena are completed, and tennis courts, picnic areas, camping grounds and a playground are being added.

### Worthington

Planned improvements include: widening and resurfacing of city streets; construction of a lodge and restaurant at the boat marina and a four-store shopping center; development of a city park with tennis and basketball courts, playground equipment and shelter houses; and re-establishment of a planning and zoning commission. Three subdivisions are being developed.

### Wurtland

A 60-bed convalescent home opened in early 1975. Forty more beds are now being added to this facility. A commission is working on the organization of a city planning and zoning commission. The city has plans to purchase and improve an old school recreational facility.

## HISTORY

Greenup County is located in the northeastern part of Kentucky on the Ohio River and is adjacent to the City of Portsmouth, Ohio. It covers an area of 351 square miles. Little Sandy River and Tygart Creek flow across it and empty into the Ohio River. The land surface ranges from rich river bottoms to rolling and hilly areas, as it lies near the foothills of the Appalachian Mountains. About two-thirds of the area is forested.

Settlers first came to the Greenup County area in the mid-eighteenth century. South Portsmouth, formerly called Springfield, was settled at a site once occupied by Shawnee Indians and early French traders before any Englishmen came to Kentucky.

This was the first settlement in Kentucky. The first white child born west of the Alleghenies lived in Greenup County. She remembered George Washington's visit to the area when he was surveying in 1773. Jesse Boone, one of Daniel Boone's brothers, settled near the town of Greenup where his brother often visited him. Daniel carved the famous "D. Boone killed a bar" on a tree in this vicinity. By 1800 a mill, tannery and store were operated at Old Town by John Womacks.

Greenup became Kentucky's forty-fifth county in 1803, its territory taken from Mason County. It was named for Christopher Greenup, who was a United States Congressman at the end of the eighteenth century and later became Kentucky's third Governor. Greenup, the county seat, is located on the Ohio and was incorporated in 1818 as Greenupsburg.

In 1810, Greenup County had 2,369 inhabitants. By 1850 the county had a population of 9,654. By 1920 population had more than doubled, reaching 20,062. Population continued increasing, reaching 24,887 in 1950, 29,238 in 1960, and 33,500 in 1974. Flatwoods is the largest city, with a population of 8,423 in 1973. The towns of Greenup, Raceland, Russell, South Shore, Worthington, and Wurtland all have 1973 populations in excess of 1,000.

The total number of Greenup County residents employed in 1974 averaged 10,610, including 250 in agriculture and 1,000 in government. Manufacturing employers in the county reported 3,720 workers; trade and services firms employed 1,320; and mining employed 50. Major industrial products are: mining machinery, special refractories, plastic packing materials, railroad cars, and sulfuric acid. In addition, portions of the Armco Steel Corporation facilities are in Greenup County.

Tourist and recreational facilities are provided for the county at Greenbo Lake State Park.

The most prominent of Greenup County's sons is Jesse Stuart, Kentucky's famous poet and author. His works on life in eastern Kentucky include The Thread That Runs so True, Man With a Bull-Tongue Plow, and Taps for Private Tussie.

**Kentucky Department of Commerce  
Capital Plaza Tower  
Frankfort, Kentucky 40601**

---

**Industrial Development Division  
(502) 564-7140**

**Community Services Division  
(502) 564-4300**

**Business Development Division  
(502) 564-4300**

**Research and Planning Division  
(502) 564-4886**

**Office of Minority Business Enterprises  
(502) 564-4270**

**Map Sales Office  
133 Holmes Street  
(502) 564-4715**

**Industrial Development Finance Authority  
(502) 564-4554**