

1969

Industrial Resources: Hart County

Kentucky Library Research Collections
Western Kentucky University, spcol@wku.edu

Follow this and additional works at: https://digitalcommons.wku.edu/hart_cty



Part of the [Business Administration, Management, and Operations Commons](#), [Growth and Development Commons](#), and the [Infrastructure Commons](#)

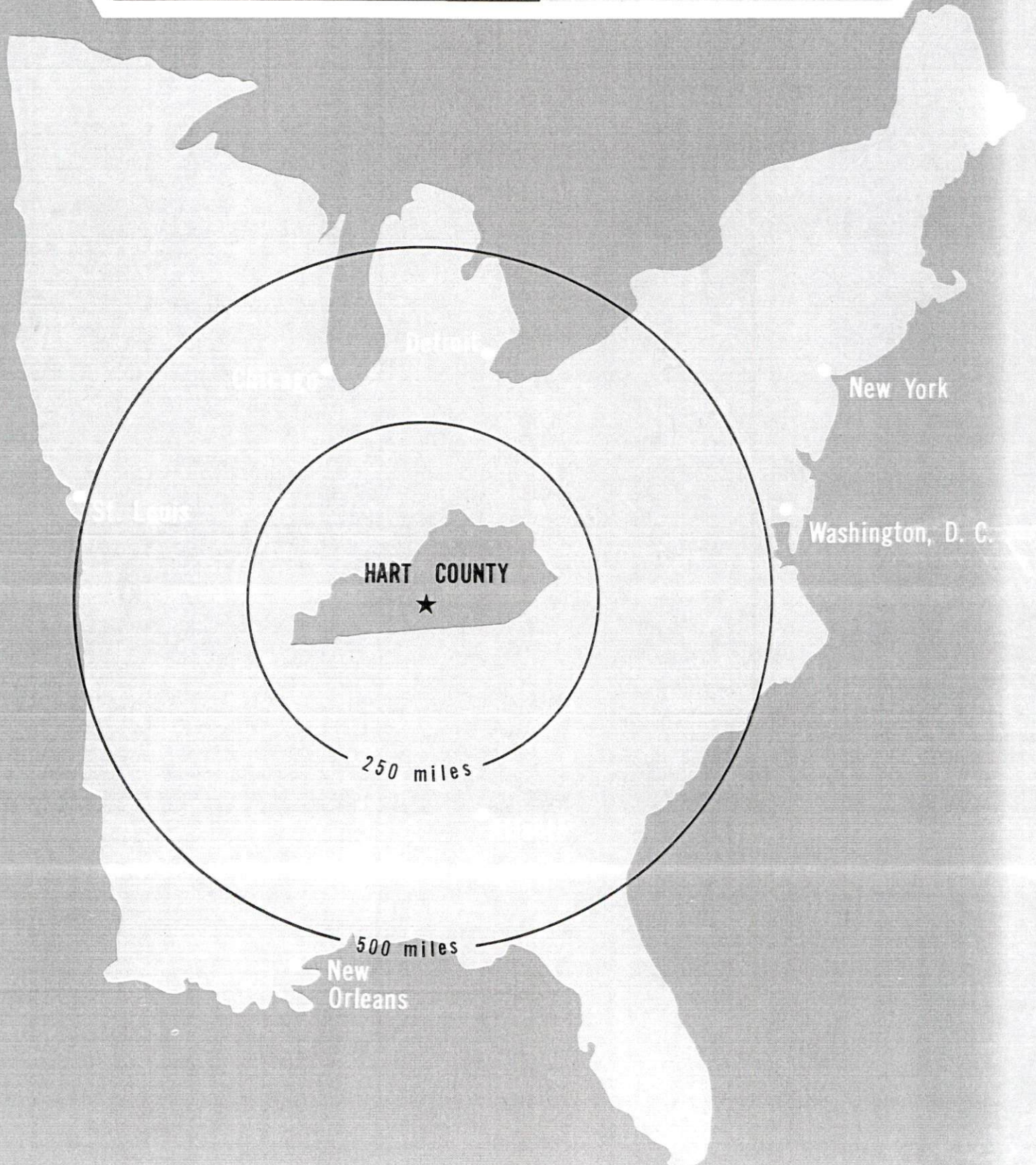
Recommended Citation

Kentucky Library Research Collections, "Industrial Resources: Hart County" (1969). *Hart County*. Paper 15.
https://digitalcommons.wku.edu/hart_cty/15

This Report is brought to you for free and open access by TopSCHOLAR®. It has been accepted for inclusion in Hart County by an authorized administrator of TopSCHOLAR®. For more information, please contact topscholar@wku.edu.

INDUSTRIAL RESOURCES

**HART COUNTY
KENTUCKY**

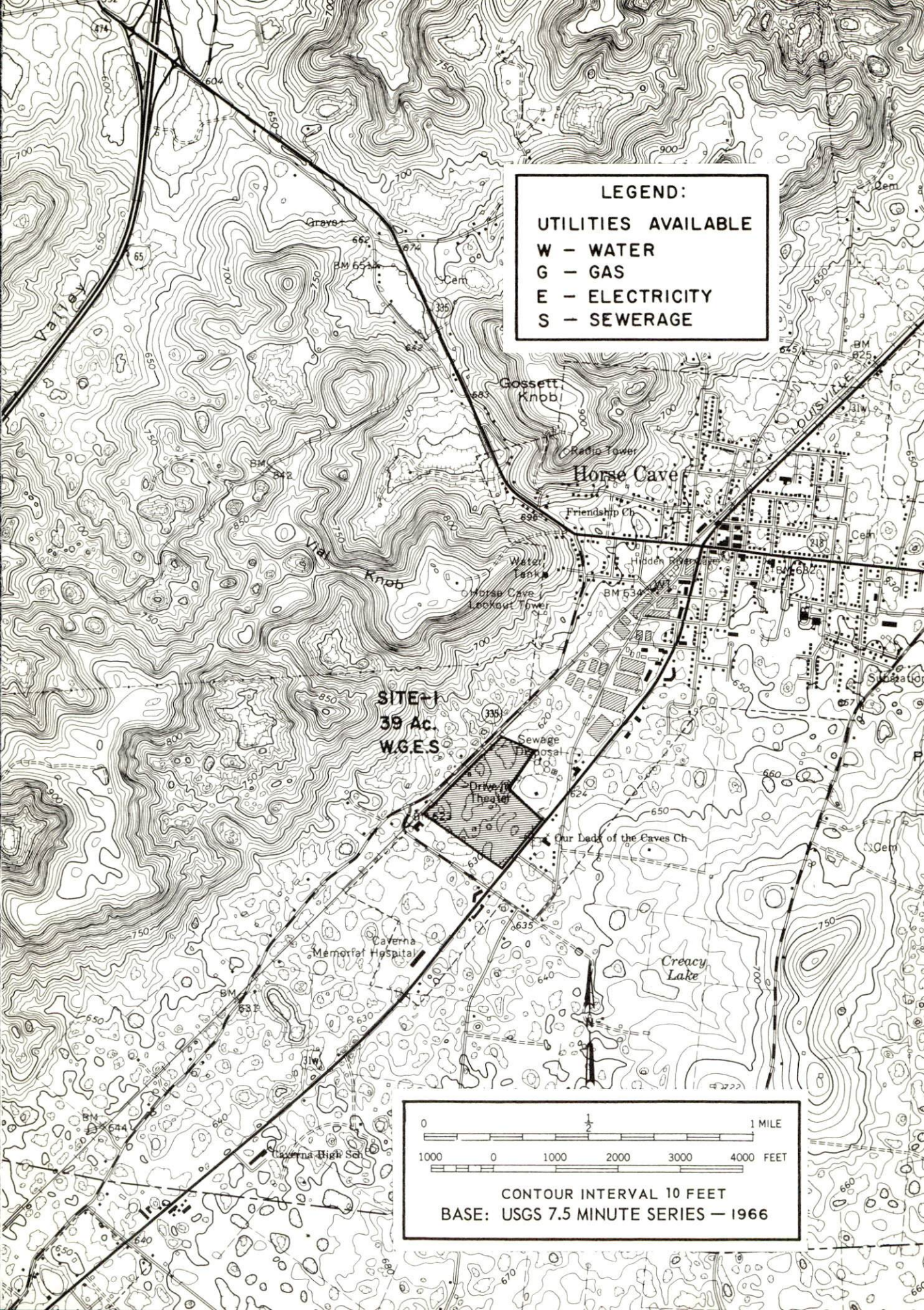


HORSE CAVE INDUSTRIAL SITE

1969

HORSE CAVE INDUSTRIAL SITE

SITE # 1: ACREAGE AND TOPOGRAPHY: 39 acres, clear level land
LOCATION: Borders U. S. Highway 31-W, one mile south
of Horse Cave
HIGHWAY ACCESS: U. S. Highway 31-W
RAILROAD: Louisville & Nashville Railroad borders the site
WATER: Green River Water District
GAS: Western Kentucky Gas Company has a 6-inch line on
the western border and a 4-inch line along the eastern
border of the site
ELECTRICITY: Kentucky Utilities Company
SEWERAGE: The City of Horse Cave SIZE LINE: 8-inch
OWNED BY: Horse Cave Industrial Foundation



LEGEND:

UTILITIES AVAILABLE

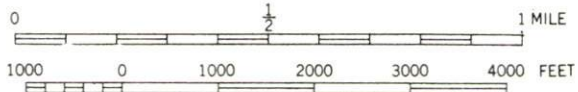
W - WATER

G - GAS

E - ELECTRICITY

S - SEWERAGE

SITE-1
39 Ac.
W.G.E.S.



CONTOUR INTERVAL 10 FEET
BASE: USGS 7.5 MINUTE SERIES - 1966

PLAT OF SURVEY
48.69 ACRES
HORSE CAVE, HART CO., KY.
FOR
HORSE CAVE INDUSTRIAL
FOUNDATION, INCORPORATED

PLAT 1 SURVEY BY
JOSEPH C. LERCH
LAND SURVEYOR 689
GLASGOW, KY.
SCALE: 1" = 200'
NOV., 1968

Joseph C. Lerch

L. & N.
RAILROAD
CO.
(66' R/W)

POINT 15° N 10° W
OF EC COR.

ARMCO
METAL
PRODUCTS
CO.

CREACY
ROAD
(50' R/W)

FRANK GUNN
(HART CO.
CREAMERIES)

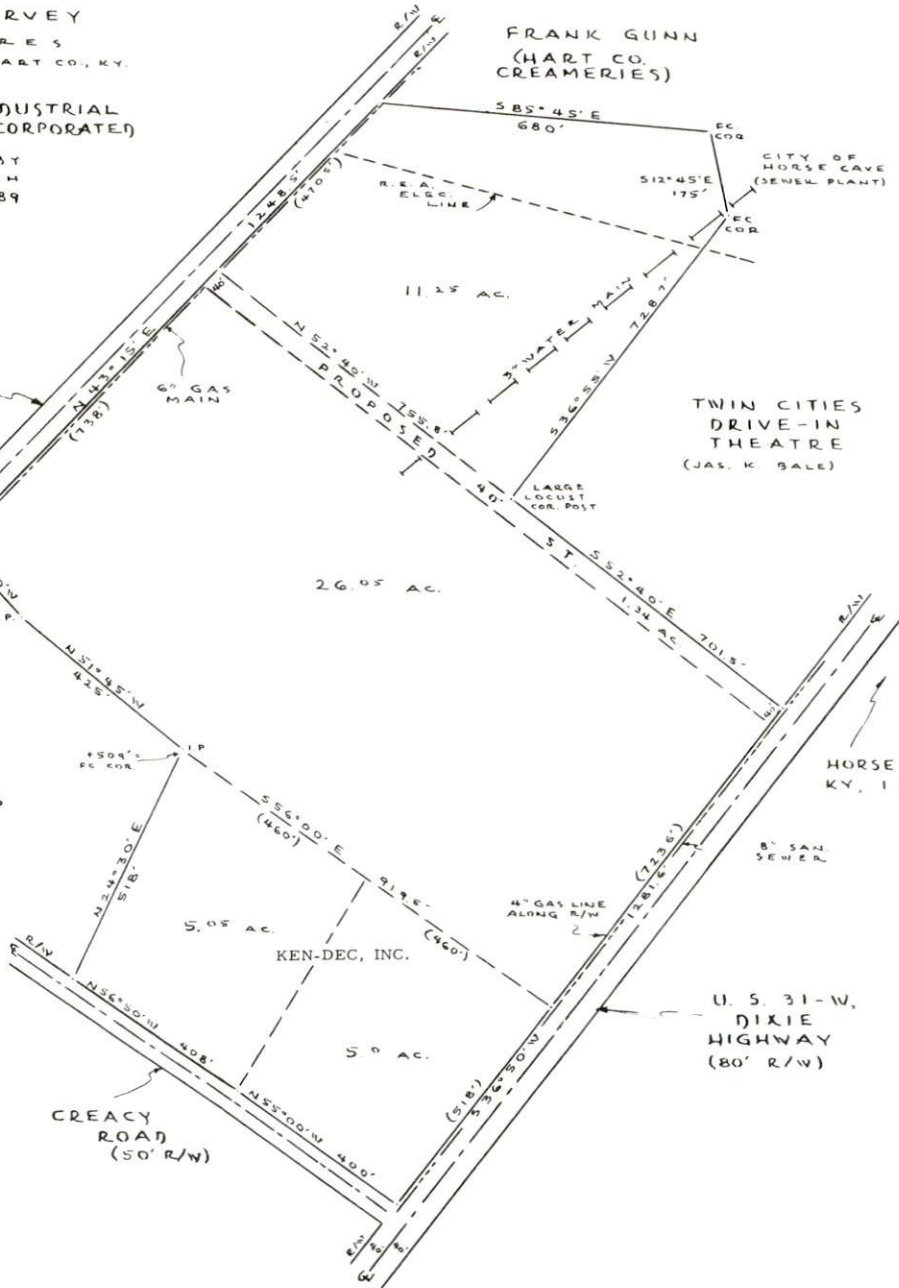
CITY OF
HORSE CAVE
(SEWER PLANT)

TWIN CITIES
DRIVE-IN
THEATRE
(JAS. K. BALE)

HORSE CAVE,
KY., 1 MILE ±

U. S. 31-W,
DIXIE
HIGHWAY
(80' R/W)

KEN-DEC, INC.



MUNFORDVILLE INDUSTRIAL SITES

1970

Kentucky Library WKU

MUNFORDVILLE INDUSTRIAL SITES

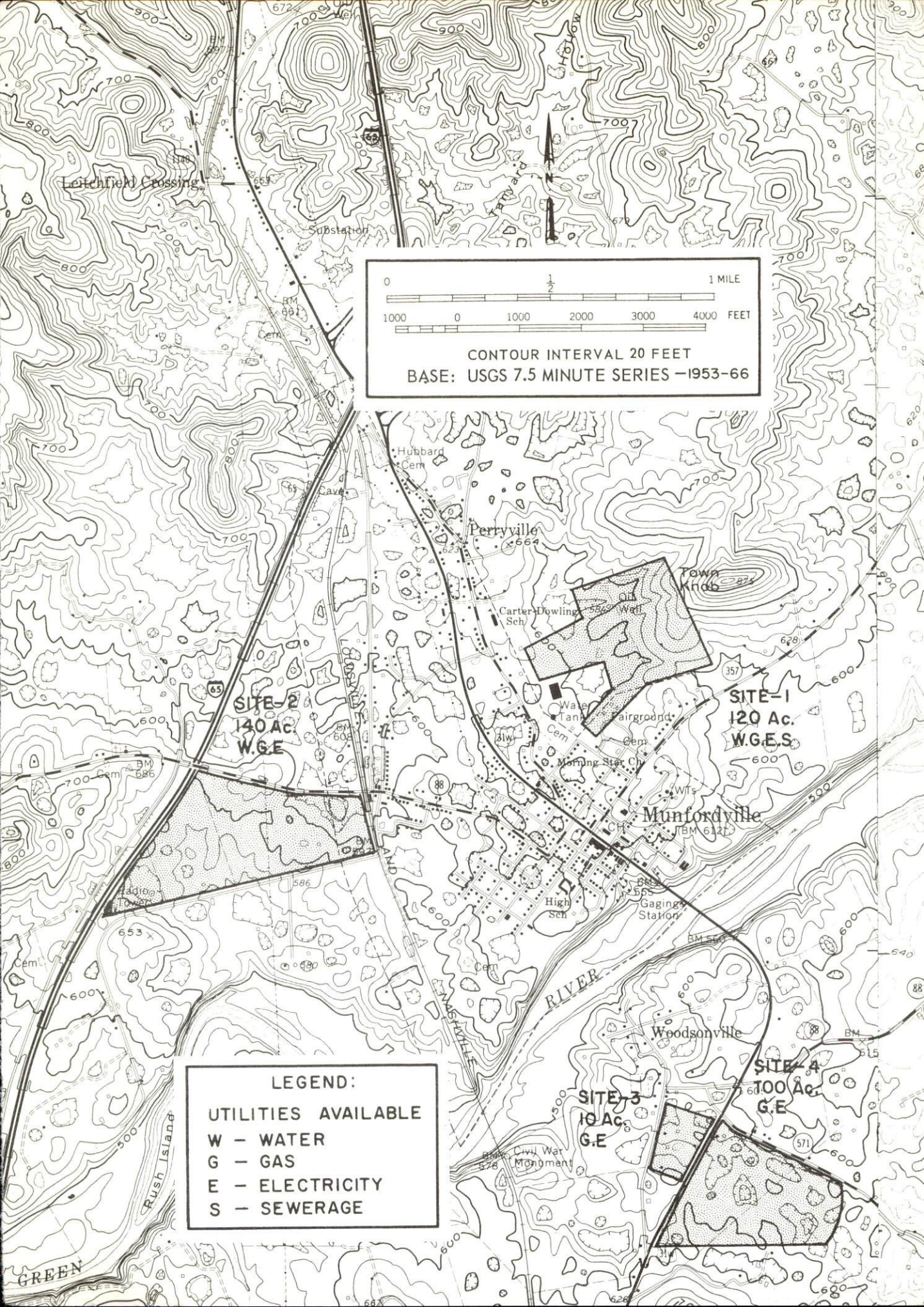
For additional information concerning the following sites, contact Howard T. Scott, 105 W. 2nd Street, Munfordville, Kentucky, or the Kentucky Department of Commerce, Frankfort, Kentucky.

SITE # 1: ACREAGE AND TOPOGRAPHY: 120 acres, level to sloping
LOCATION: One-half mile northeast of Munfordville
HIGHWAY ACCESS: City street to U. S. Highway 31-W
WATER: Munfordville Municipal Water Company
GAS: Western Kentucky Gas Company has 2-inch IP line bordering site
ELECTRICITY: Kentucky Utilities Company
SEWERAGE: The City of Munfordville
OWNERSHIP: Privately owned

SITE # 2: ACREAGE AND TOPOGRAPHY: 140 acres, level to gently rolling
LOCATION: One-half mile west of Munfordville
HIGHWAY ACCESS: Kentucky Highway 88
RAILROADS: Louisville & Nashville Railroad borders site on east
WATER: Munfordville Municipal Water Company
GAS: Western Kentucky Gas Company has a 2-inch IP line along Kentucky Highway 88 west to the Louisville & Nashville tracks.
ELECTRICITY: Kentucky Utilities Company
OWNERSHIP: Privately owned

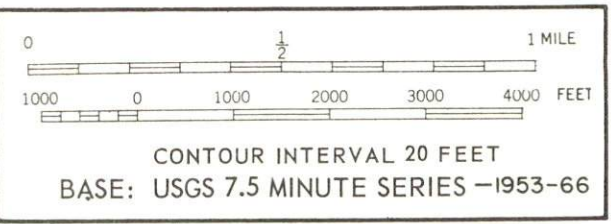
SITE # 3: ACREAGE AND TOPOGRAPHY: 10 acres, level to rolling
LOCATION: One-half mile south of Munfordville on U. S. 31-W
HIGHWAY ACCESS: Frontage on U. S. 31-W
GAS: Western Kentucky Gas Company has a 2-inch IP line adjacent to the property
ELECTRICITY: Kentucky Utilities Company
OWNERSHIP: Privately owned

SITE # 4: ACREAGE AND TOPOGRAPHY: 100 acres, level to gently rolling
LOCATION: One-half mile south of Munfordville on U. S. 31-W
HIGHWAY ACCESS: Frontage on U. S. 31-W
GAS: Western Kentucky Gas Company has a 2-inch IP line adjacent to the property
ELECTRICITY: Kentucky Utilities Company
OWNERSHIP: Privately owned



Leitchfield Crossing

Substation



Hubbard
Cem

Perryville

Carter-Dowling
Sch

Town
Knob

SITE-2
140 Ac.
W.G.E.

SITE-1
120 Ac.
W.G.E.S.

Munfordville

High
Sch

Gaging
Station

Woodsonville

SITE-4
100 Ac.
G.E.

SITE-3
10 Ac.
G.E.

LEGEND:

UTILITIES AVAILABLE

- W - WATER
- G - GAS
- E - ELECTRICITY
- S - SEWERAGE

GREEN

CURRENT INDUSTRIAL RESOURCES

CURRENT INDUSTRIAL RESOURCES, HART COUNTY, KENTUCKY

This is a 1970 supplement to "Industrial Resources, Hart County, Kentucky" which was published in 1969.

Population

	<u>1970</u>	<u>1960</u>
Horse Cave	2,007	1,780
Munfordville	1,231	1,157
Hart County	13,448	14,119
Labor Market Area	170,433	164,092
(Includes Barren, Edmonson, Grayson, Green, Hardin, Larue, Metcalfe, and Hart Counties.)		

General Employment Characteristics

	<u>Employment 1969</u>	
<u>Industry</u>	<u>Hart County</u>	<u>Labor Market Area</u>
TOTAL	4,700	51,400
Agriculture	1,700	11,400
Nonagricultural	3,000	40,000
Manufacturing	500	12,500
Trade & Services	987	9,299
Government	500	10,300

Manufacturing Employment

<u>Type Industry</u>	<u>Hart County</u>			<u>Labor Market Area</u>		
	<u>1969</u>	<u>1959</u>	<u>% Change</u>	<u>1969</u>	<u>1959</u>	<u>% Change</u>
TOTAL	487	236	+106.4	7,747	2,667	+ 190.5
Food & kindred products	56	37	+ 51.4	472	524	- 9.9
Apparel, textiles, leather	342	157	+117.8	2,992	1,537	+ 94.7
Lumber & furniture	27	19	+ 42.1	361	220	+ 64.1
Printing, publishing, paper	13	13		201	102	+ 97.1
Chemicals, petroleum, coal, rubber	0	0		739	13	+5584.6
Stone, clay & glass	0	0		101	53	+ 90.6
Primary metals	9	0		65	0	
Machinery & metal products	30	0		2,479	36	+6786.1
Other	10	10		337	182	+ 85.1

There are presently 22 manufacturing firms in Hart County. Major firms, employment, and year started operations:

<u>Firms</u>	<u>Employment</u>	<u>Year Started Operations</u>
Horse Cave Manufacturing Co.	150	1955
Ken-Dec Company	50	1969
Moss Tobacco Co.	63	1937
Louisville Bedding Co.	135	1889

Labor Organizations

Electrical Workers (IUE) - Armco Steel Corporation

Labor Supply

	<u>Hart County</u>			<u>Labor Market Area</u>		
	<u>Total</u>	<u>Male</u>	<u>Female</u>	<u>Total</u>	<u>Male</u>	<u>Female</u>
Current	1,139	641	498	8,394	4,718	3,676
Potential additions next five years	1,425	755	670	15,745	7,969	7,776

Personal Income

Hart County, 1968: Total - \$26,672,000 Per Capita - \$1,931
 1959: Total - \$14,492,000 Per Capita - \$1,051

Property Tax Rates

Property tax rates per \$100 of assessed valuation, 1969:

	<u>Horse Cave</u>	<u>Munfordville</u>	<u>Hart County</u>
State	\$.015	\$.015	\$.015
County	.181	.181	.181
School	.606	.487	.487
City	.230	.190	
Total	\$1.032	\$.873	\$.683

Education

The Hart County School System includes three high schools with provisional ratings, and six elementary schools.

The Ravenna Independent School District includes one high school with provisional rating and two elementary schools.

Vocational School: Bowling Green Vocational-Technical School, 39 miles distant
Courses offered: General Clerical, Dental Assistant, Health Careers, Nurse Aide, OB Technician, Practical Nursing, Surgical Technician, Ward Clerk, Distributive Education, Electronics Technology, Highway Technology, Technical Drafting, Air Conditioning & Refrigeration, Auto Body Repair, Auto Mechanics, Carpentry, Commercial Foods, Drafting, Electricity, Machine Shop, Office Machine Repair, Printing, Radio & TV Repair, Small Engine Repair, Tool & Die Making, Welding.

Transportation

Trucking Service: Associated Transport, Inc., Dixie Ohio Express, Inc., Gateway Transportation Company, Inc., Majors Truck Line, Inc., McLean Trucking Company, Skaggs Transfer, Inc., Southern Forwarding Company, Wilson Freight Company.

Bus Service: Southern Greyhound Bus Lines.

Rail Service: Louisville & Nashville Railroad. Piggyback service is available at Elizabethtown, 30 miles distant.

Air Service: Bowling Green-Warren County Airport, 39 miles distant.

Power and Fuel

Electric Distributors

Kentucky Utilities Company
Farmers RECC

Natural Gas Distributor

Western Kentucky Gas Co.

Industrial Sites

The industrial sites contained in the 1969 Hart County Industrial Resources brochure are still available for industrial use.

Health

Nearest general hospital - Caverna Memorial Hospital. Capacity - 30 beds; staff - 7 doctors, 6 registered nurses; special personnel - 7 licensed practical nurses, 47 special personnel

Financial Institutions

Statement of Condition as of June 30, 1970

<u>Banks</u>	<u>Assets</u>	<u>Deposits</u>
Horse Cave State Bank (Horse Cave)	\$6,234,000.00	\$5,345,000.00
Canmer Deposit Bank (Munfordville)	3,895,324.10	3,470,471.48
Hart County Deposit Bank (Munfordville)	5,506,560.26	4,507,423.82

HORSE CAVE, KENTUCKY

Water and Sewerage

Water: Daily treatment capacity - 1,000,000 gallons; average daily use - 450,000 gallons; maximum daily use - 550,000 gallons; storage capacity - 1,035,000 gallons; size distribution lines - 3 to 12 inches.

Sewerage: Type treatment - primary and secondary, trickling filters, aeration, clarification, drying beds; design capacity - 480,000 gallons per day; size of sewer mains - 8 to 12 inches.

Local Government

Police Protection: Number of law enforcement officers - 4 (city); 6 (county).

Fire Protection: Number of volunteer firemen - 25; American Insurance Association fire rating, City of Horse Cave - Class 8.

Recreation

A lighted ball diamond, one drive-in theater, youth center, Mammoth Onyx Cave (2 1/2 miles distant).

MUNFORDVILLE, KENTUCKY

Water and Sewerage

Water: Daily treatment capacity - 400,000 gallons; average daily use - 100,000 gallons; maximum daily use - 150,000 gallons; treated storage capacity - 105,000 gallons; size distribution lines - 3 to 8 inches.

Sewerage: Type treatment - primary and secondary, trickling filters, aeration, clarification, drying beds; design capacity - 180,000 gallons per day; size of sewer mains - 6 to 8 inches.

Local Government

Police Protection: Number of law enforcement officers - 3 (city); 6 (county).

Fire Protection: Number of volunteer firemen - 16; American Insurance Association fire rating, City of Munfordville - Class 8 and 9.

Other Local Facilities

Public Library: Hart County Library; number of volumes - 18,000; annual circulation - 20,000.

Recreation

Munfordville Memorial Park with lighted ball diamond, picnic tables, grills, a fishing pond, horseshow ring, exhibitors building, and stock barns; Munfordville Recreation Park with an excellent lighted ball diamond; Little League; softball league for girls, boys, and adults; a movie theater; and Doug Wilson's Park, located on the Green River.

INDUSTRIAL RESOURCES
HART COUNTY, KENTUCKY

Prepared by
The Kentucky Department of Commerce
in cooperation with
The Munfordville Chamber of Commerce
and
The Horse Cave Chamber of Commerce

1969

This copy has been prepared by the Kentucky Department of Commerce,
Division of Research and Planning, and the cost of printing paid from
State funds.

TABLE OF CONTENTS

<u>Chapter</u>	<u>Page</u>
INDUSTRIAL SITES	i
HART COUNTY, KENTUCKY, A PROFILE	1
THE LABOR MARKET	3
Population	3
General Economic Characteristics	3
Manufacturing Characteristics	4
Wage Levels	6
Labor Supply	6
Labor Organizations	7
Income	7
EDUCATION	8
Elementary and High School	8
Vocational Schools	8
Colleges	9
TRANSPORTATION	10
Rail	10
Highways	10
Truck Service	10
Air	11
Other Transportation Services	11
POWER AND FUEL	12
Electricity	12
Natural Gas	12
Coal	13
Fuel Oil	13
WATER AND SEWERAGE	14
Water	14
Sewerage	15

<u>Chapter</u>	<u>Page</u>
AGRICULTURE - NATURAL RESOURCES - CLIMATE	16
Agriculture	16
Mineral Resources	16
Water Resources	16
Forests	17
Climate	17
LOCAL GOVERNMENT	18
Structure	18
Finance	18
Taxes	18
Planning and Zoning	19
Safety	19
Fire	19
Police	20
Sanitation	20
HEALTH	21
Hospitals	21
Public Health	21
OTHER LOCAL FACILITIES	22
Housing	22
Communication	22
Telephone	22
Telegraph	22
Postal	22
Newspapers	22
Radio	22
Television	22
Libraries	23
Churches	23
Financial Institutions	23
Hotels and Motels	23
Clubs and Organizations	23
Recreation	24
Community Improvements	25
HISTORY	26

HART COUNTY, KENTUCKY, A PROFILE

Location

Hart County is located in the beautiful cave country of South Central Kentucky. Hart County is located on the northeastern border of Mammoth Cave National Park, 76 miles south of Louisville, Kentucky, and 108 miles north of Nashville, Tennessee.

The Economy

During 1968 agricultural employment (1,934), trade and services (1,013), manufacturing (457), and government (481) were the leading segments of employment in Hart County's economy. Tourism is the reason why trade and services plays such an important role in Hart County's economy. One of the reasons for this large employment is the location of Mammoth Cave National Park in southwestern Hart County. Manufacturing employment in Hart County has experienced strong growth during the 1960's, with employment in September, 1968, being 457 for a 63.8 percent gain during the past nine years. Community attitudes and programs are directed toward greater future industrial growth. Total personal income for Hart County residents was \$27,503,000 in 1968 for a gain of 89.8 percent during the sixties. Per capita income in 1968 was \$2,008.

Hart County is the geographic center of an eight-county area with a total employment in 1968 of 49,733. In September, 1968, there were 7,141 manufacturing jobs in the eight-county area, and since 1960 industrial employment has increased by a spectacular 128.9 percent. Other important economic activities are agriculture (12,669), trade and services (8,770), and government (9,570). Growth in this area has been excellent during the past few years and available resources indicate additional growth in the years to come.

Labor Supply

There are 5,368 men and 3,852 women available for industrial employment within reasonable commuting distance of Hart County. During the next five years 8,258 boys and 8,020 girls in the area will become 18 years of age, augmenting this labor supply.

Industrial Sites and Services

There is a 39-acre industrial site presently available in Horse Cave. Other potential industrial sites are located near Munfordville.

Hart County's transportation facilities have been greatly improved with the completion of Interstate 65 and two state parkways serving the Bluegrass Region.

Trucking service is provided by nine common carriers. Interstate and intrastate services are available.

Rail service to Hart County is provided by the Louisville & Nashville Railroad.

Commercial air service is available at the Bowling Green-Warren County Airport, located near Bowling Green, 39 miles from Horse Cave.

Ample supplies of power and fuels are available. Electric power is supplied by Kentucky Utilities Company and Farmers RECC. Natural gas is supplied by Western Kentucky Gas Company.

THE LABOR MARKET

Population

Munfordville, the county seat of Hart County, had a net population increase from 1900 to 1950 of 88.2 percent. During the 1950's Munfordville continued its growth with a 29.4 percent gain.

Horse Cave, the largest town in Hart County, had a 78.2 percent increase in population from 1900 to 1950. During the 1950's Horse Cave increased its population 15.2 percent to the 1960 population of 1,780.

Hart County has shown a net decrease in population from 1900 to 1950 of 16.7 percent. During the 1950's the population continued to decline with a 7.8 percent decrease. During the 1950's there was an 11.9 percent outmigration in Hart County. The 1969 estimate indicates that the rate of decline has slowed. The population loss is primarily due to the lack of job opportunities in the area.

TABLE 1

POPULATION TREND-HORSE CAVE, MUNFORDVILLE, AND
HART COUNTY, KENTUCKY ^{1/}

Year	Horse Cave		Munfordville		Hart County	
	Population	% Change	Population	% Change	Population	% Change
1900	867		475		18,390	
1950	1,545	78.2	894	88.2	15,321	-16.7
1960	1,780	15.2	1,157	29.4	14,119	-7.8
1969 (Est.) ^{2/}	NA	NA	NA	NA	13,700	-3.0

General Economic Characteristics

During 1968 total county employment in Hart County averaged 4,694. Major segments of employment are agriculture (1,934), trade and services (1,013), government (481), and manufacturing (457).

Tourism is responsible for the large employment in trade and services. The location of Mammoth Cave National Park in the area is the reason for the large tourist activity in the Hart County area.

In the Hart County labor market area, defined as Hart and adjacent counties, total employment in 1968 averaged 49,733. Major segments of its employment were trade and services (8,770), government (9,570), agriculture (12,669), and manufacturing (7,141).

Manufacturing Characteristics

Manufacturing activity in Hart County has experienced strong growth during the 1960's. Manufacturing employment totaled 457 in September, 1968, for a 63.8 percent gain during the past nine years. Approximately 40 percent of industrial employment is female.

Nineteen firms in Hart County are engaged in manufacturing activity and produce 19 different products. The greatest production is concentrated in clothing and textiles.

Two manufacturing firms employ 100 or more workers.

Five of the county's manufacturing firms began production during the sixties. The following two firms are the largest manufacturers located in Hart County: Horse Cave Manufacturing Company, Horse Cave, and Louisville Bedding Company, Munfordville. The newest addition to the county's growing manufacturing plants is Ken-Dec Company, located in Horse Cave.

TABLE 2

HART COUNTY MANUFACTURING FIRMS, THEIR PRODUCTS AND EMPLOYMENT ^{3/}

Firm	Product	Employment		
		T	M	F
<u>Bonnieville</u>				
Bonnieville Manufacturing Co., Inc.	Mobile homes, camper units	25	23	2
Esta Hornback Lumber Co.	Custom lumber	2	2	0
<u>Hardyville</u>				
Pascal Milling Co.	Feed	2	2	0
<u>Horse Cave</u>				
Armco Steel Corporation	Corrugated steel pipe	12	12	0
Homer Bartley Lumber Co.	Rough lumber	20	20	0
Foremost Dairies, Inc.	Concentrated whey	4	4	0
Gulf Oil Company	Fertilizer	7	6	1
Hart County Creameries, Inc.	Cheddar cheese	40	34	6
(cont'd)				

(cont'd)

Firm	Product	Employment		
		T	M	F
Hart County Herald	Newspaper, job printing	2	0	2
J. B. Hatcher & Square Deal Lumber Co.	Concrete, millwork	7	7	0
Horse Cave Feed Mill	Feed	5	5	0
Horse Cave Manufacturing Co.	Men's, boys' jackets	150		
Ken-Dec Company		(under construction)		
Moss Tobacco Co.	Tobacco redrying	63	53	10
<u>Munfordville</u>				
Green River Locker Plant	Meat processing	4	2	2
The Hart County News	Newspaper, printing	6	4	2
Louisville Bedding Co.	Mattress protector pads	100	27	73
Munfordville Craft Shop	Lumber, millwork	3	3	0
Munfordville Milling Co.	Feed	2	2	0
J. W. Simpson Lumber, Inc.	Lumber, railroad ties, pallets	21	20	1

The eight-county Hart County labor market area includes: Hart, Barren, Edmonson, Grayson, Green, Hardin, Larue, and Metcalfe Counties. In September, 1968, there were 7,141 employed in manufacturing. Major groupings of activities are shown in Table 3. The largest manufacturing employment is located in Hardin and Barren Counties. Manufacturing in the area has grown rapidly by increasing 128 percent during the past eight years.

TABLE 3

MANUFACTURING EMPLOYMENT, HART COUNTY
LABOR MARKET AREA, SEPTEMBER, 1968 ^{4/}

Industry	Employment
TOTAL	7,141
Metal products and machinery	2,292
Apparel	2,777
Chemicals, petroleum, coal, and rubber	717
Food and beverages	411
Other	944

Wage Levels

The average weekly wage during 1968 in industries covered by unemployment insurance in Hart County was \$74.45. The average weekly wage in manufacturing was \$72.44. Comparable figures for Kentucky were: \$112.16 in all industries; \$123.97 in manufacturing. All the counties in the labor market area were below the state averages leading to the tentative conclusion that production workers could be recruited at near the minimum wage level.

The following wage rates are presented as a rough guideline to the Hart County wage situation. 5/

<u>Production Employees</u>	<u>Wages per Hour</u>		
	<u>Starting</u>	<u>Maximum</u>	<u>Prevailing</u>
Inspector	\$1.60	\$1.90	\$1.75
Production Laborer	1.60	1.90	1.75
Sprayer or Painter	1.60	2.50	2.00
<u>Service Employees</u>			
Carpenter	\$2.00	\$3.00	\$2.75
Electrician	2.00	3.00	2.50
Janitor	1.60	1.80	1.70
Laborer	1.60	1.80	1.70
Mechanic, Maintenance	2.00	2.75	2.50
Shipping Clerk	1.60	2.00	1.90
Truck Driver	1.60	2.00	1.75
<u>Office Employees</u>			
Bookkeeper or Accounting Clerk	\$1.60	\$2.00	\$1.75
File Clerk	1.60	1.75	1.65
Receptionist	1.60	1.75	1.65
Secretary	1.60	2.00	1.90
Stenographer	1.60	2.00	1.90
Telephone Operator	1.60	2.00	1.90
Typist	1.60	1.75	1.65

Labor Supply

There is a current labor supply of 5,368 men and 3,852 women available for industrial jobs in the Hart County labor market area. This includes the unemployed, underemployed, and people who would enter the labor force if jobs became available. By 1975, the labor supply will be augmented by 16,278 persons in the area who will become 18 years of age.

TABLE 4

CURRENT AND FUTURE LABOR SUPPLY-
HART COUNTY LABOR MARKET AREA

County	Current Labor Supply ^{6/} 1969			Future Labor Supply by 1975 ^{7/} (Becoming 18 Years of Age)		
	Total	Male	Female	Total	Male	Female
Labor Market						
Area	9,220	5,368	3,852	16,278	8,258	8,020
Hart	1,152	647	505	1,434	749	685
Barren	1,460	828	632	2,826	1,448	1,378
Edmonson	1,006	785	221	790	388	402
Grayson	1,727	1,019	708	1,686	826	860
Green	681	435	246	1,142	599	543
Hardin	1,647	782	865	6,461	3,283	3,178
Larue	552	308	244	1,141	575	566
Metcalfe	995	564	431	798	390	408

Labor Organizations

The following union is represented in Hart County:

Name of UnionName of Company

Electrical Workers (IUE)

Armco Steel Corporation

Income

The total personal income in Hart County in 1968 was estimated at \$27,503,000. Per capita income was \$2,008 for a gain of \$963 during the previous nine years. ^{8/}

EDUCATION

The educational system in the Hart County labor market area has the facilities to produce an effective labor force for future industrial growth.

Elementary and High School

The Hart County School System, which serves Munfordville, includes three high schools and six grade schools. Special facilities include all modern methods of teaching. Special personnel includes three guidance counselors, one homebound teacher and seven remedial reading teachers. The county school budget for the year ending June 30, 1968, was \$1,200,000. Planned improvements to the county school system include a classroom, library, lunchroom, and kitchen at Bonnieville; and a cafeteria and kitchen at Hart Memorial.

Horse Cave and Cave City in Barren County have an independent school district. There is one grade school in Horse Cave and one in Cave City, and one high school that serves the two communities. Special personnel and facilities include all modern teaching methods. The budget for the year ending June 30, 1968, was \$485,830.

All the high schools have provisional ratings by the State Board of Education.

TABLE 5

SCHOOLS, ENROLLMENT, NUMBER OF TEACHERS, STUDENT-
TEACHER RATIO IN HART COUNTY, 1968-69 ^{9/}

School	Enrollment	No. of Teachers	Student- Teacher Ratio
Hart County Elementary Schools	1,767	79	22-1
Hart County High Schools	984	52	19-1
Caverna Independent Elementary	606	28	26-1
Caverna Independent High School	479	19	25-1

Vocational Schools

Bowling Green Vocational-Technical School, located in Bowling Green, Kentucky, 39 miles from Horse Cave, serves the Hart County area. The courses offered are auto body repair, auto mechanics, carpentry, drafting, industrial electricity, electronics, machine shop, office machine repair, practical nursing, tool and dye making, graphic arts, commercial foods, television and radio repair.

In addition to regular preparatory courses, upgrading courses are offered in evening extension classes for employed persons. Special courses are also available for eligible people under the Manpower Development and Training Act.

An extension center located in Glasgow, 18 miles from Horse Cave, offers courses in auto mechanics, building trades and drafting.

Colleges

Western Kentucky University, 39 miles distant, serves the Hart County area. Western offers three four-year undergraduate degrees, one two-year undergraduate degree, and one graduate degree with course offerings in 32 different departments.

Other institutions of higher learning in the Hart County area include:

<u>College or University</u>	<u>Location</u>	<u>Distance</u>
Austin Peay State College	Clarksville, Tennessee	100 miles
Campbellsville College	Campbellsville, Kentucky	46 miles
Elizabethtown Community College	Elizabethtown, Kentucky	35 miles
Lindsey Wilson Junior College	Columbia, Kentucky	56 miles
Nazareth College	Nazareth, Kentucky	57 miles
University of Kentucky	Lexington, Kentucky	120 miles
Hopkinsville Community College	Hopkinsville, Kentucky	95 miles
University of Louisville	Louisville, Kentucky	75 miles

TRANSPORTATION

Rail

Hart County is served by the Louisville & Nashville Railroad, operating between Cincinnati, Ohio, and New Orleans, Louisiana. There are two local freights daily, one northbound and one southbound. Switching service is available six days per week, with sidings for thirty cars at Horse Cave, and sidings for twenty cars at Munfordville.

The nearest piggyback facilities are located at Elizabethtown, Kentucky, 31 miles from Munfordville.

TABLE 6

RAILWAY TRANSIT TIME FROM HORSE CAVE, KENTUCKY, TO: 10/

City	No. of Days		City	No. of Days	
	CL			CL	
Atlanta, Ga.	3		Los Angeles, Calif.	5	
Birmingham, Ala.	3		Louisville, Ky.	1	
Chicago, Ill.	4		Nashville, Tenn.	2	
Cincinnati, Ohio	2		New Orleans, La.	4	
Cleveland, Ohio	4		New York, N. Y.	4	
Detroit, Mich.	4		Pittsburgh, Pa.	4	
Knoxville, Tenn.	3		St. Louis, Mo.	3	

Highways

Munfordville is served by Interstate 65, U. S. Route 31-W, and Kentucky Highways 88 and 357. Horse Cave is served by Interstate 65, U. S. Route 31-W, and Kentucky Highways 335 and 218.

Truck Service: The following trucking firms serve Hart County:

<u>Company</u>	<u>Home Office</u>
Associated Transport, Inc.	New York, New York
Crutcher Transfer Line, Inc.	Louisville, Kentucky
Dixie Ohio Express, Inc.	Akron, Ohio
Gateway Transportation Co., Inc.	La Crosse, Wisconsin
Majors Truck Line, Inc.	Canneyville, Kentucky
McLean Trucking Co.	Winston-Salem, North Carolina

<u>Company</u>	<u>Home Office</u>
Skaggs Transfer, Inc.	Louisville, Kentucky
Southern Forwarding Co., Inc.	Memphis, Tennessee
Wilson Freight Co.	Cincinnati, Ohio

TABLE 7

HIGHWAY MILES AND TRUCK TRANSIT TIME FROM
HORSE CAVE, KENTUCKY, TO SELECTED MARKET CENTERS

City	Delivery Highway Time (Days)			City	Delivery Highway Time ^{11/}		
	Miles	LTL	TL		Miles	LTL	TL
Atlanta, Ga.	368	2	1	Los Angeles, Calif.	2,377	6	5
Birmingham, Ala.	381	2	1	Louisville, Ky.	76	1	1
Chicago, Ill.	379	2	1	Nashville, Tenn.	108	1	1
Cincinnati, Ohio	202	1	1	New Orleans, La.	708	2	2
Cleveland, Ohio	456	2	1	New York, N. Y.	856	3	2
Detroit, Mich.	381	2	1	Pittsburgh, Pa.	482	2	1
Knoxville, Tenn.	196	1	1	St. Louis, Mo.	320	2	1

Air

The nearest commercial airport is the Bowling Green-Warren County Airport, located near Bowling Green, 39 miles from Horse Cave. The airport has two paved runways which are 4,000 by 150 feet and 5,280 by 150 feet. Services provided include: 80-100 octane fuel, jet A-50 fuel, storage, minor A & E repairs, FAA flight service station, taxi and car rentals. There is also scheduled service by Eastern Airlines plus air field service by Eastern and one private firm.

The Glasgow Municipal Airport, located in Glasgow, 18 miles from Horse Cave, has one lighted and paved runway which is 3,000 by 75 feet. Services include: 80-100 octane fuel, charter, flight instruction, taxi and A & E repair.

Other Transportation Services

Southern Greyhound Bus Lines provides Horse Cave and Munfordville with 14 northbound and southbound buses daily.

The nearest car and truck rental can be found in Elizabethtown and Bowling Green.

Munfordville and Horse Cave are provided with 24-hour taxi service.

POWER AND FUEL

Electricity

Hart County is served by the Kentucky Utilities Company and Farmers RECC.

The Kentucky Utilities Company serves approximately 2,500 customers in the Hart County area. The company supplies adequate electric power with a 138,000 volt transmission line leading into Bonnieville stepped down to 69,000 volts. A 69,000 volt line leads into Munfordville stepped down to 12,000 volts. A 69,000 volt transmission line leads into Horse Cave stepped down to 12,000 and 4,000 volts. Kentucky Utilities Company provides electric service in 78 Kentucky counties. The company has a generating capacity of approximately 740,000 KW in the six generating stations which are located in southeastern, central, and western Kentucky. Additional generating capacity of 427,000 KW is under construction with completion scheduled for May 1971. The company also has major interconnections with its neighboring utilities, which provide a means of interchanging substantial blocks of electricity when desired. Rates for industry will be furnished by the company's Industrial Development Department in Lexington, Kentucky.

Farmers RECC, whose wholesale source is the East Kentucky Rural Electric Cooperative Corporation, serves approximately 3,000 customers in Hart County.

The East Kentucky RECC is a generation and transmission cooperative with headquarters in Winchester, Kentucky. East Kentucky RECC transmits low-cost, wholesale power to its 18 member rural electrics which serve more than 171,000 members in 93 counties. This power is generated at East Kentucky RECC's William C. Dale station at Ford, Kentucky, and John Sherman Cooper Station at Burnside, Kentucky.

Natural Gas

Natural gas is distributed to 757 customers in Horse Cave and 514 customers in Munfordville by Western Kentucky Gas Company, whose source of supply is the Texas Gas Transmission Corporation. Both cities are supplied by a 4-inch transmission line. The distribution system is made up of lines ranging in size from 4 inches to 1 1/4 inches. The BTU content is 1,000 per cubic foot and specific gravity is .60.

General Service Rate 1:

First	1,000 cu. ft. or less per month	\$1.50
Next	2,000 cu. ft. per month	.0895 per 100 cu. ft.
Next	7,000 cu. ft. per month	.0715 per 100 cu. ft.
Next	40,000 cu. ft. per month	.0655 per 100 cu. ft.
All additional		.0585 per 100 cu. ft.

Rate 3-A:

Gas service under this rate is available only to customers who require and contract for not less than 100,000 cubic feet per day, or 24,000,000 cubic feet per year. Service may be 100 percent interruptible, or 100 percent firm, or a combination of the two. The cost shall be:

Interruptible Service

First	2,000,000 cu. ft. per month	\$950.00
Next	2,000,000 cu. ft. per month	44.5¢ per M cu. ft.
Next	2,000,000 cu. ft. per month	42.5¢ per M cu. ft.
All additional	cu. ft. per month	36.5¢ per M cu. ft.

Minimum Charge: \$950.00 per meter per month.

If additional information is needed, contact the Industrial Development Department, Western Kentucky Gas Company, Owensboro, Kentucky.

Coal

Hart County is served by the Western Kentucky Coal Field. The freight cost for industrial and domestic coal from the Western Kentucky Group II, Horse Cave is \$2.63 per net ton. ^{12/}

Fuel Oil

Kentucky has three fuel oil refineries located in Catlettsburg, Louisville, and Somerset. Kentucky's fuel supply is supplemented by border state operations.

Delivery prices of the various grades may be obtained from the Kentucky Department of Commerce.

WATER AND SEWERAGE

Water

Munfordville is supplied finished water by the Munfordville Municipal Water Company, whose source of supply is the Green River. The treatment plant capacity is 400,000 gallons per day. Average daily use is 100,000 gallons with peak daily use being 150,000 gallons. Average pumping time required to meet daily requirements is six hours. Distribution mains range from 3 to 8 inches and pressure is maintained at 50 psi. Storage facilities include a 750,000-gallon concrete settling tank for raw water, and a 200,000-gallon standpipe and a 105,000-gallon standpipe for treated water.

Monthly rates for Munfordville:

	<u>Gallons</u>	<u>Per M Gallons</u>
First	2,000	\$3.85 (Minimum)
Next	8,000	1.65
Next	10,000	1.55
Next	10,000	1.35
Next	10,000	1.25
Next	20,000	1.00
Next	40,000	.65
All over	100,000	.35

Horse Cave is served by the Green River Water District. The City of Horse Cave purchases treated water from the Green River Water District. The Green River Water District's source of supply is the Rio Verde Springs and treatment capacity is 1,000,000 gallons per day. Average daily use is 450,000 gallons, while peak daily use has been 550,000 gallons. Average pumping time to meet daily requirements is sixteen hours. Distribution lines range from 12 inches to 3 inches and pressure is maintained at 80 to 120 psi. Storage tanks are upright, with a total combined capacity of 1,035,000 gallons.

Monthly rates for Horse Cave:

	<u>Gallons</u>	<u>Per M Gallons</u>
First	1,000	\$3.00 (Minimum)
Next	4,000	1.50
Next	5,000	1.40
Next	10,000	1.15
Next	10,000	1.05
Next	20,000	.70
All over	50,000	.40

Sewerage

The City of Munfordville provides both primary and secondary treatment to raw sewage. Treatment is by trickling filters, aeration, clarification, and drying beds. The treatment plant has a capacity of 150,000 gallons per day and average daily flow has been 45,000 gallons. Sewer mains range from 6 to 8 inches and treated sewage is discharged into the Green River. The charge for sewerage service is 75 percent of the water bill.

The City of Horse Cave provides both primary and secondary treatment of sewage. Treatment is by trickling filters, aeration, clarification, and drying beds. The treatment plant has a designed flow of 480,000 gallons per day, and an average daily flow of 131,000 gallons. Sewer mains range from 8 to 12 inches and the treated effluent is discharged into a sink hole. The rate for sewerage service is 50 percent of the water bill.

AGRICULTURE-NATURAL RESOURCES-CLIMATE

Agriculture

The approximate total land area of Hart County is 272,000 acres, with 79 percent of the area devoted to farm land. In 1964, there were 2,106 farms in the county with an average size of 102 acres.

Farm income in the county is largely from the production of burley tobacco, supplemented by dairying, cattle, and hogs. The 1964 value of sales of all farm products totaled \$9,325,848, averaging \$4,428 per farm. Crop sales totaled \$6,007,738; livestock and livestock products totaled \$3,243,109.

In 1967, agricultural production in Hart County included 6.9 million pounds of burley tobacco, 1.1 million bushels of corn, and 20,670 tons of alfalfa hay. Livestock on farms on January 1, 1968, included 41,000 cattle and calves, and 10,400 hogs and pigs. Milk cows on farms during 1966 averaged 9,900 head, with milk production for the year totaling 58.9 million pounds.

Mineral Resources

The principal mineral resources of Hart County, produced in order of value in 1967, are limestone and petroleum. Small quantities of gas have been reported. Sand and gravel and coal are available for local consumption. Limestone and petroleum are actively being produced in this area.

A limestone belt extending north and south through the central portion of the county offers many possibilities for use in the chemical industry. One quarry was reported in operation during 1967, producing a high-calcium limestone. In 1966, one quarry produced 134,449 short tons valued at \$201,673. The crushed limestone is used for concrete aggregate, roadstone, and agricultural lime.

Petroleum has been produced in large quantities from the LeGrande, Logsdon Valley, Priceville, and other pools. Production normally pays at shallow depths. Through 1968, an accumulative total of 7,397,288 barrels of crude oil had been produced. A total of 21,370 barrels were produced in 1968.

Water Resources

The Green and Nolin Rivers are the major streams draining Hart County and afford the largest supply of surface water. The average

discharges of the Green River at Munfordville and the Nolin River at Wax, are 2,562 cfs (38 year record-USGS) and 789 cfs (25 year record-USGS), respectively.

The expected yield of ground water in Hart County varies extensively. The southern and most of the northern portions are expected to yield 5 to 50 gpm. Portions of the north and west yield 5 gpm or less, and a band trending in a northeast-southwest direction is expected to yield 50 to 200 gpm which would offer potential for industrial water supplies. Several springs along the Green River and its tributaries have reported yields in excess of 100 gpm. Exceptions may be found in restricted areas.

Forests

There are 117,300 acres of commercial forest land in Hart County, covering 43.1 percent of the total land area. The most abundant species are white oaks, red oaks, hickories, yellow poplar, beech, hard maple, and ash.

Within a 50-mile radius of Munfordville, the county seat, there are more than two million acres of commercial forest land. In 1962, 146 million board feet of timber were harvested from this area. While some of the timber harvest is used locally, much of it is shipped out of the area for further processing.

Forests of the entire area receive organized protection from fire from the State Department of Natural Resources.

Climate

Hart County has a pleasant year-round climate. Great extremes of heat or cold rarely occur, yet weather changes are sufficiently frequent to gain variety.

Winter is short, with snowfall heaviest during the months of December, January, and February.

Total precipitation averages 43 inches annually, occurring mainly in the winter and spring.

During an average year, 161 days are cloudy, 106 days partly cloudy, and 98 days clear. Normal monthly minimum temperatures range from 25° to 66° F.; maximum range is from 41° to 86° F.; average annual temperatures range from 34° to 76° F.

Prevailing wind is from the south.

LOCAL GOVERNMENT

Structure

Munfordville, a fifth-class city and county seat of Hart County, is governed by a mayor who is elected for four years, and six councilmen who are elected for two-year terms.

Horse Cave, a fifth-class city, is governed by a mayor who is elected for four years, and six councilmen who are elected for two-year terms.

Hart County is governed by a fiscal court composed of a county judge and five magistrates elected for four-year terms.

Finance

The City of Horse Cave had an income of \$67,780 for the year ending December 31, 1968, while expenditures totaled \$55,062. The City of Horse Cave has no bonded indebtedness at this time.

The City of Munfordville had an income of \$67,000 for the year ending December 31, 1968, while expenditures for the year totaled \$67,000. As of December 31, 1968, the city had a bonded indebtedness of \$493,000 in revenue bonds for the water and sewer system.

Hart County's budget for the year ending June 30, 1969, was \$211,641.

Taxes

Property taxes are the major source of income for Horse Cave, Munfordville, and Hart County. Property must be assessed at 100 percent of value under provisions of the Kentucky Constitution. The 1968 net assessed value of property in Hart County was:

<u>Major Classes of Property</u>	<u>Hart County</u>
Real Estate	\$52,286,345
Tangibles	12,832,133
Public Service	11,737,178

Property tax rates for Hart County are shown on the following page.

TABLE 8

PROPERTY TAX RATES PER \$100 OF ASSESSED VALUE FOR
HORSE CAVE, MUNFORDVILLE, AND HART COUNTY, 1968 ^{13/}

Taxing Unit	Horse Cave	Munfordville	Hart County
State	\$.015	\$.015	\$.015
County	.181	.181	.181
School	.606	.488	.488
City	<u>.230</u>	<u>.190</u>	<u></u>
Total	\$ 1.032	\$.874	\$.684

For the City of Horse Cave, fees for business licenses are set individually by the city council.

Munfordville levies a business license tax of \$25.

Both cities are empowered by state law to allow a five-year tax exemption from municipal taxation for new industry.

Planning and Zoning

The Horse Cave Planning and Zoning Commission has completed a Comprehensive Plan, Zoning Ordinance and Subdivision Regulations. The Commission is presently working on a Public Improvements Program, Capital Improvements Budget and Housing Elements. The city has adopted codes.

Safety

Fire: Horse Cave has a Class-8 American Insurance Association fire rating. The Horse Cave Fire Department is staffed by a part-time chief and 19 volunteer firemen. The department is equipped with two 750-gpm pumper trucks, one hose truck and one equipment truck.

Munfordville has a Class-8 and-9 American Insurance Association fire rating. The Munfordville Fire Department is staffed by a part-time chief with 15 volunteer firemen. The department is equipped with two 500-gpm pumper trucks. One truck is equipped with 2,000 feet of 2 1/2-inch hose, 800 feet of 1 1/2-inch hose and a 300-gallon booster tank. The other truck has 1,200 feet of 2 1/2-inch hose, 600 feet of 1 1/2-inch hose, 150 feet of booster hose, and 100-gallon booster tank.

Police: The Horse Cave Police Department is staffed by a chief and three patrolmen. Motorized equipment consists of one radio-equipped cruiser.

The Munfordville Police Department is staffed by one chief and two night patrolmen. Motorized equipment consists of one cruiser with mobile phone.

The Hart County Sheriff's Department is staffed by a sheriff, two deputies, and three constables. All officers own their own automobiles.

Sanitation

Munfordville is provided garbage collection by a private contractor. Collection is twice weekly in both residential and business districts, and a land fill is used for disposal. The charge for this service is \$1.80 per month in residential areas and \$3.00 per month in business areas.

Horse Cave is provided garbage collection by a private contractor. Collection is twice weekly in both residential and business districts and a land fill is used for disposal. The charge for this service is \$2.50 per month in residential areas and \$4.00 per month in business areas.

HEALTH

Hospitals

Hart County is served by a number of hospitals in the county and surrounding area. The residents of Hart County use hospital and medical services in Louisville, Elizabethtown, Glasgow, Bowling Green, Leitchfield, and Caverna Memorial Hospital between Horse Cave and Cave City in Hart County.

Caverna Memorial Hospital has 30 beds, 7 bassinets, and one operating room. The active staff includes seven doctors, six registered nurses, seven licensed practical nurses and forty-seven special personnel.

Public Health

The Hart County Health Department, located in Munfordville, has a 1968-69 budget of \$18,781. The professional and technical staff includes one full-time nurse, one part-time medical clinician, one part-time administrative assistant, and one full-time clerk. The major services of the Health Department are communicable disease control, maternal and child health, sanitation, laboratory services, chronic disease control, health education and vital statistics.

OTHER LOCAL FACILITIES

Housing

There is a limited amount of saleable and rental property available in the Hart County area. The construction cost of a new house would depend upon the design and the type of materials used.

Communication

Telephone: Munfordville and Horse Cave are served by the South Central Rural Telephone Cooperative Corporation, with home offices in Glasgow, Kentucky. The subscribers utilize toll-free exchange for all of Hart County and portions of Barren, Green, Larue, and Metcalfe Counties.

Telegraph: Telegraph service is by telephone only to Bowling Green, Kentucky.

Postal: Horse Cave has a second-class post office with nine employees. Mail is received and dispatched twice daily. The mail is delivered once daily in the business district. The post office serves three rural routes.

Munfordville has a second-class post office with eight employees. Mail is received and dispatched twice daily.

Newspapers: Hart County is served by two weekly newspapers which are printed each Thursday. The Hart County News, in Munfordville, has a circulation of approximately 2,200, while the Hart County Herald has an approximate circulation of 2,100.

Other papers are received daily from Bowling Green, Glasgow, and Louisville, Kentucky.

Radio: WLOC, located in Munfordville, with AM and FM, serves Hart County from 5 a.m. to 12 midnight. Other radio stations serving the county are located in Glasgow, Bowling Green, and Elizabethtown, Kentucky.

Television: Television reception is good from Louisville and Bowling Green, Kentucky, and Nashville, Tennessee. All three major networks are represented.

Cable service is available in Munfordville and Horse Cave.

Libraries

The Hart County Public Library, located in Munfordville, has approximately 18,000 volumes with an annual circulation of approximately 20,000. The library is open Monday through Saturday from 9 a.m. to 5 p.m. Other items furnished by the library are magazines, films and records. The newest program of the library is a weekly story hour held on Wednesdays. The county bookmobile operates four days a week with an annual circulation of approximately 53,000.

The Horse Cave Library has 26,000 volumes with an annual circulation of approximately 22,000. The library is open six days per week from 1 to 5 p.m. Other items furnished by the library include records, maps, films, and magazines.

Churches

The following denominations are represented in Hart County: Baptist, Church of Christ, Church of God, Christian, Catholic, Presbyterian, and United Methodist.

Financial Institutions

<u>Bank</u>	<u>Statement as of December 31, 1968</u>	
	<u>Assets</u>	<u>Deposits</u>
<u>Munfordville</u>		
Canmer Deposit Bank	\$3,900,000	\$3,500,000
Hart County Deposit Bank	6,240,736	5,401,440
<u>Horse Cave</u>		
Horse Cave State Bank	\$8,148,547	\$7,432,820

Hotels and Motels

<u>Munfordville</u>	
Hart Motel	32 units
<u>Horse Cave</u>	
Horse Cave Motel	25 units
Blue Grass Motel	17 units
Gray's Motel	15 units
Ray's Motel	12 units
Owen's Hotel	42 rooms

Clubs and Organizations

Business and Civic: Chamber of Commerce, Jaycees, Lions, PTA, Rotary

Fraternal: Masonic Lodge, American Legion, VFW, DAV, Eastern Star, WOW

Women's: Woman's Club (Junior and Senior), Homemakers, American Legion Auxiliary

Youth: Youth Center, FFA, FTA, FHA, FBLA, Little League, Rainbow Girls, Demolay, Teenage Club, Junior Conservation Club

Recreation

Local: Munfordville Memorial Park has a lighted ball diamond, picnic tables, grills, a fishing pond, horseshow ring, exhibitors building, and stock barns.

The Munfordville Recreation Park has an excellent lighted ball diamond. There is a Little League for children; softball league for girls, boys, and adults; and a movie theater. Other recreational facilities are also located at the park.

Doug Wilson's Park, located on the Green River, provides water recreation for Munfordville.

Horse Cave is located at the northern entrance to the Kentucky Cave area. Here is found the Mammoth Onyx Cave. In it can be seen colorful onyx stalagmites and stalactites and native cave life including blind fish, white crayfish, cave crickets, and salamanders.

A lighted ball diamond located on the school ground is utilized year-round. There is one drive-in theater. The Youth Center is located in the Municipal Building.

Area: Area recreation includes the world renown Mammoth Cave National Park. Here one can enjoy all the splendor of a cave including extremely large cave rooms, tight passageways, blind fish, white crayfish, cave crickets, salamanders, and a boat ride on the underground Echo River. Dining, lodging, and recreational facilities are available.

Nolin Reservoir, 5,795 acres of lake, provides water recreation for the Hart County area.

Abraham Lincoln Birthplace National Park is located at Hodgenville, 50 miles away.

Beech Bend Park, Bowling Green, Kentucky, 39 miles, offers swimming, boating, skiing, drag racing, picnic facilities, camping and hiking facilities.

There are numerous other caves and lakes located in the area.

Racing: Louisville offers the world-famous Kentucky Derby and racing at Churchill Downs, Miles Park, and Louisville Downs.

Sports: The University of Louisville and Western Kentucky University, Bowling Green, Kentucky, participate in intercollegiate athletic competition in football, basketball and baseball.

Professional basketball and baseball can be found in Louisville which is the home of the "Colonels" of the American Basketball Association and the "Colonels" of the International League.

Drama and Music: The Brown Theater, Louisville, is the home of the Louisville Theatrical Association, the Louisville Orchestra, the Kentucky Opera Association, and the Louisville Civic Ballet Company. Actors Theater, Inc., is Louisville's professional resident theater company.

Community Improvements

Public: New low-cost housing project in Horse Cave - new Caverna Memorial Hospital - new county high school - new post office in Bonnieville - new post office in Hardyville - new fire department and community building in Hardyville.

Business and Industrial: Eighty-five percent of businesses in Munfordville improved exterior of buildings - expansion of Houchens Market in Munfordville - new factory in Hardyville.

Other: Cave Land Recreation, Inc. - two new churches in Bonnieville.

HISTORY

Hart County was formed in 1819, the 61st of the state. Taken from portions of Barren and Hardin Counties, it was named in honor of Captain Nathaniel G. T. Hart, a Revolutionary War officer. In 1819, Hart County itself included a total of 598 voters, two licensed taverns, one billiard table, and three stud horses. At this time, the total valuation of its land was estimated at \$528,355.

Munfordville, the county seat of Hart County, was founded in 1816 and named in honor of Richard Jones Munford, who gave the land for the town. He was the first person to represent this district in the State Legislature.

The first courthouse of Hart County was erected at Munfordville in 1819. It lasted until 1893, when it was replaced by a new brick building. However, this one was destroyed by fire in 1928, along with nearly all the records. Immediately another was built at a cost of \$45,000.

The Old Log Inn, built in the 1820's by Thomas Munford, a brother of the founder of the town, still stands. In this old Inn, General Andrew Jackson was entertained while on his way to Washington to be inaugurated as the seventh President of the United States.

Horse Cave was originally known as Caverna, probably due to the many caves and caverns found in the area, and was incorporated in 1864. In 1862, it was a small village with approximately 82 persons, but by 1870, eight years later, had grown to about 479.

Horse Cave is said to have been so named because the Cherokee Indians used a nearby cave as a corral for stolen horses. A part of the town is built over Hidden River Cave, which contains a continuously flowing underground river. In this river are found pearly white "eyeless" fish. The cave, containing some of the largest known domes in this area and having an entrance more than 250 feet wide and 450 feet long, is said to have never been extensively explored.

There are a number of natural curiosities, such as caves, sink-holes, springs, etc., in Hart County. Some of the caves are from a half to two miles in length; and these, being in the neighborhood of Mammoth Cave, have also continued to attract many tourists and sight-seers to the area through the years.

The major event in the history of Hart County was the Battle of Munfordville, which took place during the Civil War on September 14 and 17, in 1862. It was here that a Union fort and 4,000 troops, along with supplies, artillery, and ammunition, were finally captured by the Confederate General Bragg after three attempts to take the town. General Bragg reached Munfordville before Union General Buell, who was racing toward Louisville to protect it from the Confederates. Bragg, then in a position either to fight the Union forces or march into Louisville ahead of them, did neither; instead he marched away to the east, leaving Buell free passage to Louisville. Bragg's withdrawal from Munfordville and his indecision from that time until his final retreat into Tennessee, were strongly condemned by the Southern press and public.

SOURCES OF INFORMATION

- 1/ U. S. Bureau of the Census, U. S. Census of Population, Kentucky.
- 2/ Department of Sociology, University of Kentucky, Kentucky County Provisional Population Estimates, 1969, Lexington, Kentucky.
- 3/ Kentucky Department of Commerce, 1969 Kentucky Directory of Manufacturers.
- 4/ Kentucky Department of Economic Security, Division of Research and Statistics.
- 5/ Kentucky Department of Economic Security, Employment Service Office.
- 6/ Kentucky Department of Economic Security, Division of Research and Statistics.
- 7/ Kentucky Department of Commerce, Kentucky's Labor Supply Estimates, 1968.
- 8/ Office of Development Services and Business Research, University of Kentucky, Lexington, Kentucky.
- 9/ Kentucky Department of Education, Kentucky School Directory, 1968-69.
- 10/ Louisville & Nashville Railroad Company, Louisville, Kentucky.
- 11/ McLean Trucking Company, Winston-Salem, North Carolina.
- 12/ Louisville & Nashville Railroad Company, Louisville, Kentucky.
- 13/ Kentucky Department of Revenue, Kentucky Property Tax Rates, 1968.