

1976

Industrial Resources: Johnson County - Paintsville

Kentucky Library Research Collections
Western Kentucky University, spcol@wku.edu

Follow this and additional works at: https://digitalcommons.wku.edu/johnson_cty



Part of the [Business Administration, Management, and Operations Commons](#), [Growth and Development Commons](#), and the [Infrastructure Commons](#)

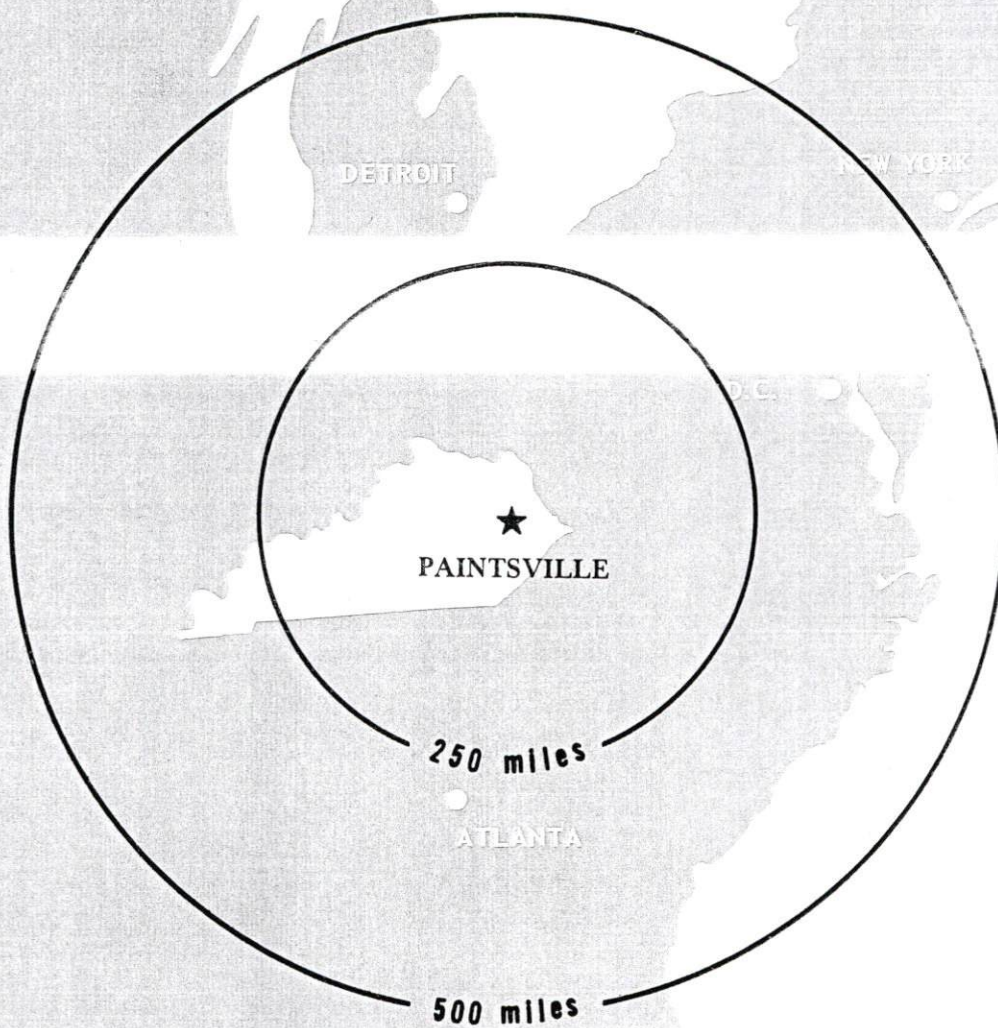
Recommended Citation

Kentucky Library Research Collections, "Industrial Resources: Johnson County - Paintsville" (1976). *Johnson County*. Paper 11.
https://digitalcommons.wku.edu/johnson_cty/11

This Report is brought to you for free and open access by TopSCHOLAR®. It has been accepted for inclusion in Johnson County by an authorized administrator of TopSCHOLAR®. For more information, please contact topscholar@wku.edu.

INDUSTRIAL RESOURCES

PAINTSVILLE KENTUCKY

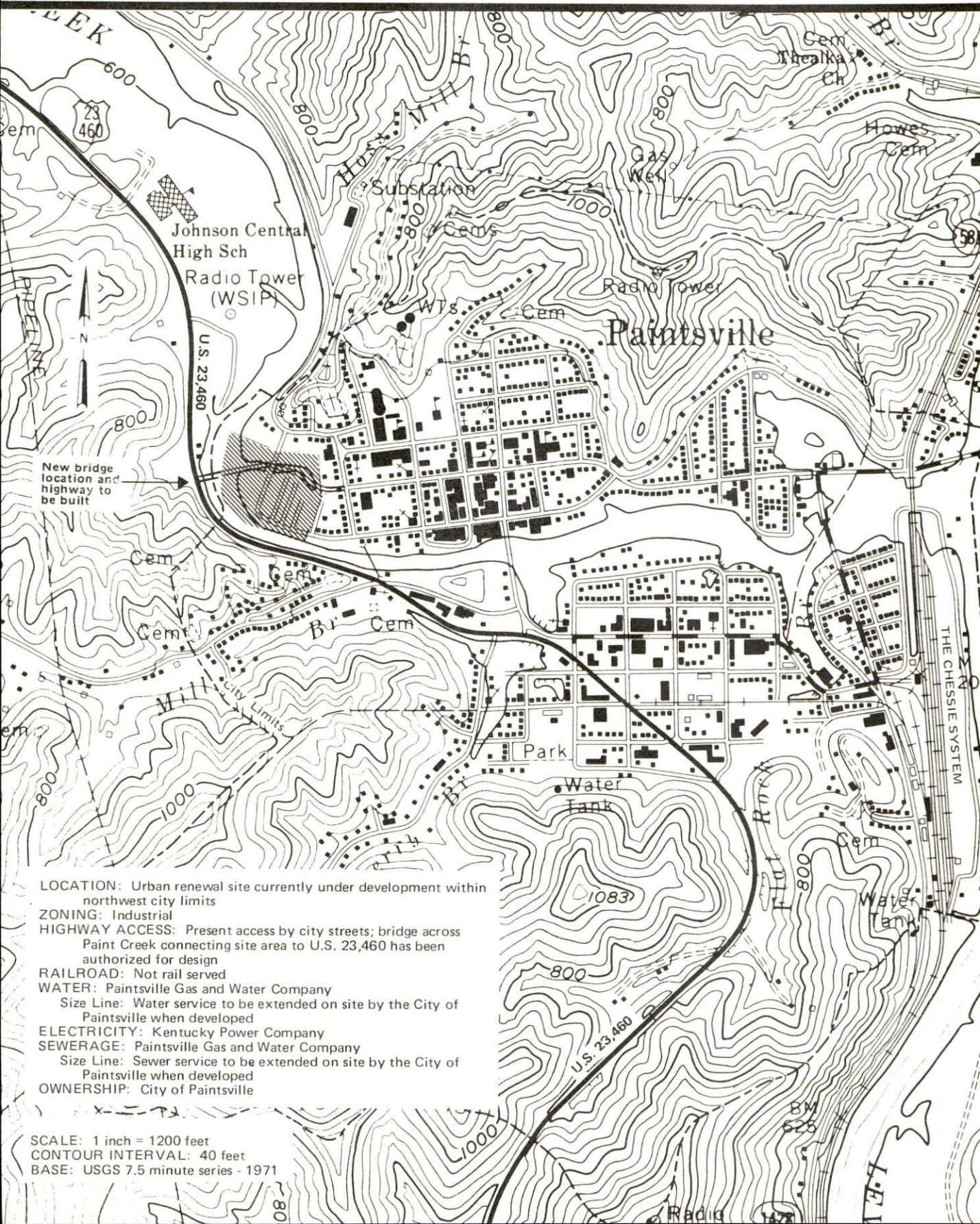


JOHNSON COUNTY, KENTUCKY

PAINTSVILLE, KENTUCKY --- Site No. 176 -- 14 Ac.

Urban Renewal Site

For more information contact Mr. Allen Perry, c/o Paintsville Herald, Paintsville, Kentucky 41240, or the Kentucky Department of Commerce, Capital Plaza Tower, Frankfort, Kentucky 40601.



- LOCATION: Urban renewal site currently under development within northwest city limits
- ZONING: Industrial
- HIGHWAY ACCESS: Present access by city streets; bridge across Paint Creek connecting site area to U.S. 23,460 has been authorized for design
- RAILROAD: Not rail served
- WATER: Paintsville Gas and Water Company
Size Line: Water service to be extended on site by the City of Paintsville when developed
- ELECTRICITY: Kentucky Power Company
- SEWERAGE: Paintsville Gas and Water Company
Size Line: Sewer service to be extended on site by the City of Paintsville when developed
- OWNERSHIP: City of Paintsville

SCALE: 1 inch = 1200 feet
CONTOUR INTERVAL: 40 feet
BASE: USGS 7.5 minute series - 1971

INDUSTRIAL RESOURCES
PAINTSVILLE, KENTUCKY

Prepared by
The Kentucky Department of Commerce
in cooperation with
The Paintsville Chamber of Commerce

1976

This copy has been prepared by the Kentucky Department of Commerce, Division of Research and Planning, and the cost of printing paid from state funds.

Production Supervisor

Patsy Wallace

Research

Terry Patterson

Clerical

Barbara Blair

Graphics

N. C. Montague
Frank Ferrante
Tony Cecconi

Cartography

Site Development Section

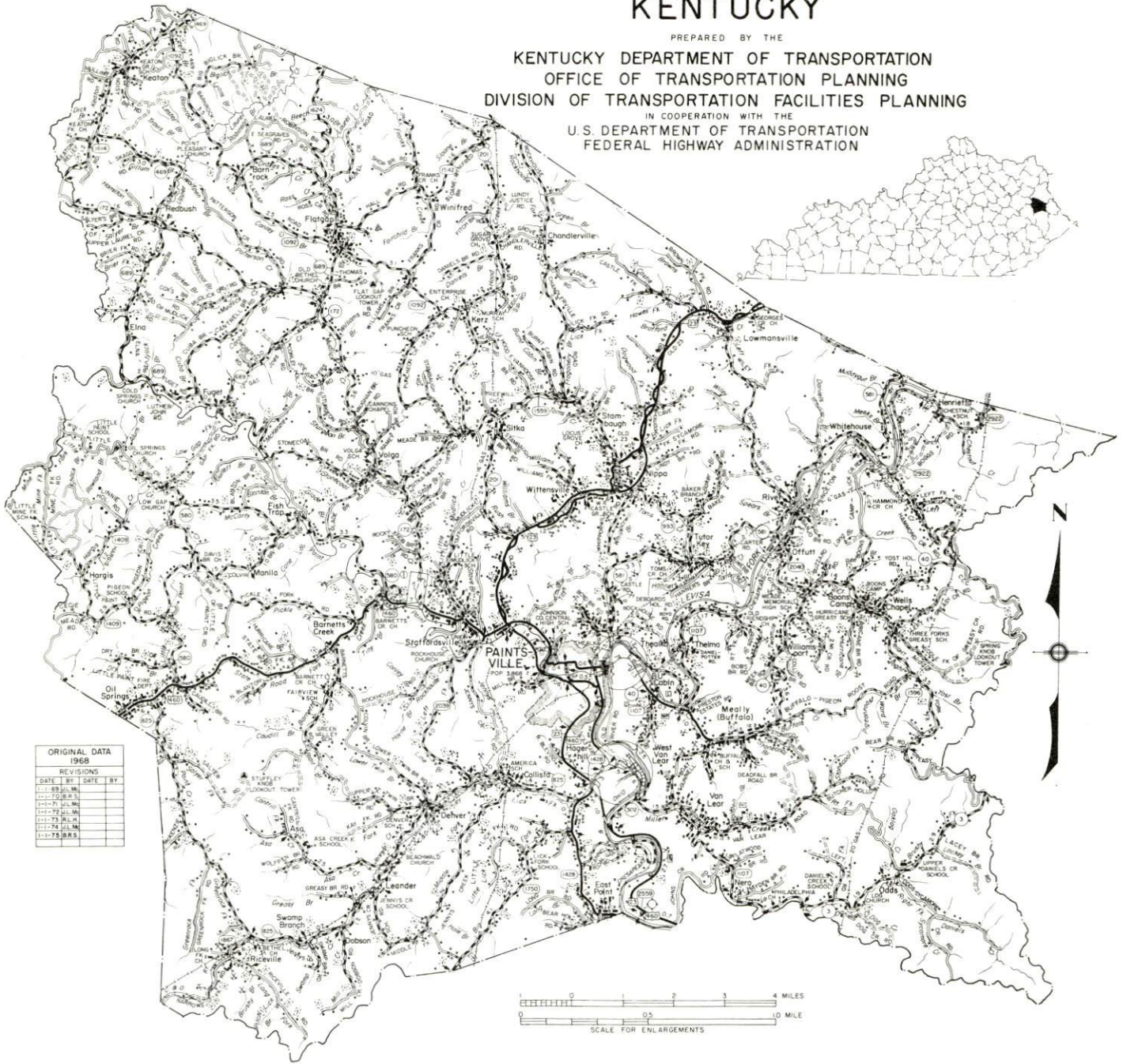
TABLE OF CONTENTS

<u>Chapter</u>	<u>Page</u>
INDUSTRIAL SITES	i
PAINTSVILLE, KENTUCKY - A RESOURCE PROFILE	1
THE LABOR MARKET AREA	3
Population	3
General Employment Characteristics, 1974	3
Manufacturing Employment by Industry	5
Paintsville Manufacturing Firms, Their Products and Employment	5
Labor Organizations.	6
Estimated Male Labor Supply.	6
Estimated Female Labor Supply	6
Wages	7
Per Capita Personal Income	8
TRANSPORTATION	9
Rail	9
Highways.	9
Truck Service	9
Air	10
Bus	10
Taxi.	10
Rental Services	10
POWER AND FUEL	11
Electricity	11
Natural Gas	11
Other Fuels	12
WATER AND SEWERAGE	13
Water	13
Sewerage.	14
CLIMATE.	15

<u>Chapter</u>	<u>Page</u>
LOCAL GOVERNMENT	16
City	16
County	16
Assessed Value of Property, 1975	16
Property Taxes	16
Local Property Tax Rate Per \$100 of	
Assessed Valuation, 1975	17
Planning and Zoning	17
Safety.	17
Police	17
Fire	17
Rescue Service	17
Solid Waste	18
EDUCATION	19
Public Schools	19
Nonpublic Schools	19
Area Colleges and Universities	20
Vocational Schools	21
HEALTH	22
Local Medical Personnel	22
Hospitals	22
Ambulance Service	22
Nursing Homes	23
Public Health	23
OTHER LOCAL FACILITIES.	24
Communications	24
Library Services.	24
Religious Institutions	25
Financial Institutions	25
Hotels and Motels	25
Clubs and Organizations	25
RECREATION	26
COMMUNITY IMPROVEMENTS	27
HISTORY	29

GENERAL HIGHWAY MAP JOHNSON COUNTY KENTUCKY

PREPARED BY THE
 KENTUCKY DEPARTMENT OF TRANSPORTATION
 OFFICE OF TRANSPORTATION PLANNING
 DIVISION OF TRANSPORTATION FACILITIES PLANNING
 IN COOPERATION WITH THE
 U.S. DEPARTMENT OF TRANSPORTATION
 FEDERAL HIGHWAY ADMINISTRATION

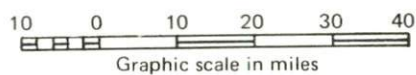
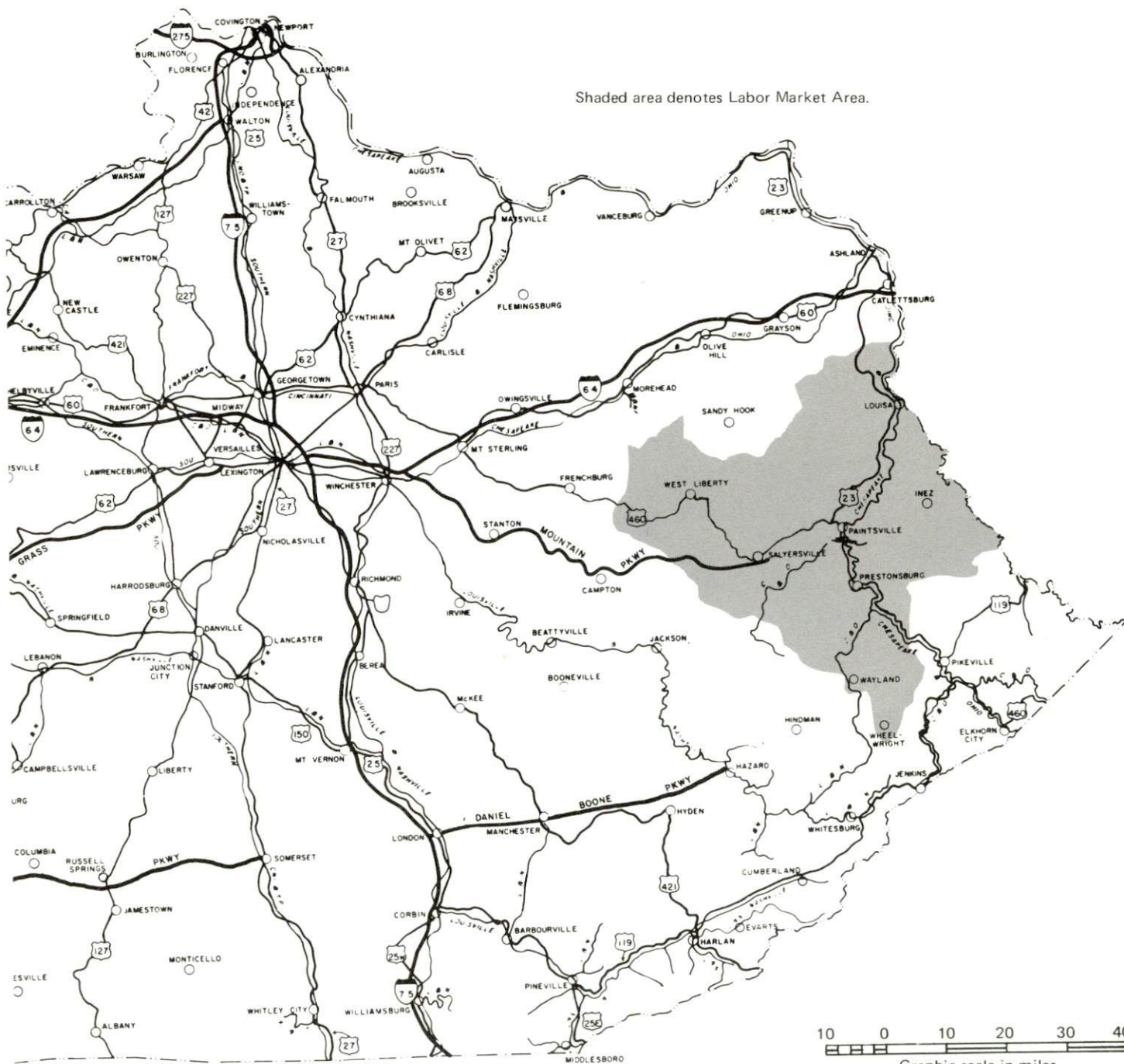


ORIGINAL DATA	
1968	
REVISIONS	
DATE	BY
1-1-70	B.R.S.
1-1-71	B.R.S.
1-1-72	B.R.S.
1-1-73	B.R.S.
1-1-74	B.R.S.
1-1-75	B.R.S.

PAINTSVILLE LABOR MARKET AREA



Shaded area denotes Labor Market Area.



PAINTSVILLE, KENTUCKY - A RESOURCE PROFILE

Paintsville, county seat of Johnson County and a 1974 All Kentucky City, is located in east central Kentucky 180 miles east of Louisville, Kentucky; 186 miles southeast of Cincinnati, Ohio; and 283 miles northeast of Knoxville, Tennessee. Paintsville had an estimated 1973 population of 4,001.

Johnson County, situated in Kentucky's Eastern Coal Field physiographic region, covers an area of 264 square miles. The county had an estimated 1974 population of 19,500.

The Economic Framework

The total number of Johnson County residents employed in 1974 averaged 6,320, including 80 in agriculture and 990 in government. Manufacturing employers in the county reported 500 workers; trade and services firms employed 1,580; mining employed 500. The major industrial product is plumbing fittings.

Total unemployment in Johnson County averaged 5.4 percent of the labor force in 1974.

Per capita personal income in the county in 1973 was \$3,021, an increase of 46.3 percent since 1969.

The Paintsville labor market area includes Johnson and the five adjoining counties. The total number of residents of the labor market area employed in 1974 averaged 31,110, including 1,000 in agriculture and 5,880 in government. Manufacturing employers in the labor market area reported 2,070 workers; trade and services firms employed 5,970; mining reported 5,035.

Resources for Growth

1. Labor Supply: There is a current labor supply of 11,400 men and 8,840 women available for industrial jobs in the labor market area. In addition, 5,300 young men and 5,050 young women in the area will become 18 years of age before 1981 and potentially available for work.

2. Transportation: The Chessie System provides Paintsville with a variety of rail services. U.S. Highways 23 and 460, "AAA" trucking routes, serve Paintsville, and the Mountain Parkway is only 19 miles distant. Completion of a new highway connecting Paintsville and Salyersville will afford much easier access to the Mountain Parkway. I-64 is approximately 45 miles north of Paintsville via two-lane Kentucky 201. The Combs Airport, 5 miles south of Paintsville, has a 3,200-foot paved runway capable of accommodating light aircraft. Commercial air service is available at Tri-State Airport, 57 miles distant near Huntington, West Virginia.

3. Power and Fuel: Kentucky Power Company, which has a major generating plant only 36 miles away, provides electric power to Paintsville and Johnson County. Johnson County is also served by Big Sandy RECC. Natural gas service is provided by the Paintsville Gas and Water Company, whose source of supply is the Kentucky-West Virginia Gas Company. Seven distributors of propane and butane and six distributors of distillate fuel oil are located in the Paintsville area. Low sulphur content coal is available locally.

4. Education: Two public school systems operate within Johnson County and educational television is available. One university, one senior college, two junior colleges, and two community colleges are located within 70 miles of Paintsville. The Mayo State Vocational-Technical School is located in Paintsville and offers training in 23 different courses.

THE LABOR MARKET AREA

POPULATION

<u>Area</u>	<u>1974*</u>	<u>1970</u>	<u>Percent Nonwhite</u>
			<u>1970</u>
Paintsville	4,001**	3,868	0.2
Labor Market Area	101,500	93,993	
Johnson County	19,500	17,539	0.1
Floyd County	38,900	35,889	0.5
Lawrence County	11,600	10,726	0.3
Magoffin County	10,700	10,443	0.1
Martin County	10,400	9,377	0.1
Morgan County	10,400	10,019	0.1

*Provisional Estimates.

**1973 Population Estimates.

Sources: U.S. Department of Commerce, Bureau of the Census, Census of Population, 1970. U.S. Bureau of the Census, Current Population Reports, Series P-25, No. 562, June 1975; Series P-26, No. 120, June 1975.

GENERAL EMPLOYMENT CHARACTERISTICS, 1974

<u>Major Employment Group</u>	<u>Employment</u>	
	<u>Johnson County</u>	<u>Labor Market Area</u>
TOTAL	6,320*	31,112*
Agricultural	76*	1,000*
Nonagricultural	6,244	30,112
Manufacturing	504**	2,070**
Government	991*	5,876*
Trade and Services	1,577**	5,966**
Mining	499**	5,035**

*County residents employed in 1974.

**Employment in the county.

Sources: Kentucky Department for Human Resources, Bureau for Administration and Operations. Kentucky Department of Mines and Minerals.



AMERICAN STANDARD, INC.

MANUFACTURING EMPLOYMENT BY INDUSTRY
SEPTEMBER 1974

<u>Industry</u>	<u>Johnson County</u>	<u>Labor Market Area</u>
TOTAL	525	2,177
Food & Kindred Products	17	50
Apparel, Textiles, Leather	78	832
Lumber, Furniture	13	273
Printing & Publishing, Paper	14	82
Chemicals, Petroleum & Coal, Rubber	1	51
Stone, Clay & Glass	4	35
Machinery, Metal Products, Equipment	398	847
Other	0	7

Source: Kentucky Department for Human Resources, Number of Workers in Manufacturing Industries Covered by Kentucky Unemployment Insurance Law Classified by Industry and County, September, 1974.

PAINTSVILLE MANUFACTURING FIRMS,
THEIR PRODUCTS AND EMPLOYMENT

<u>Firm (Establishment date)</u>	<u>Product</u>	<u>Employment</u>			
		<u>Total</u>	<u>Male</u>	<u>Female</u>	<u>Organized</u>
Adams Construction Co. (1962)	Ready mixed concrete, bituminous concrete	24	24	0	
American Standard, Inc. (1969)	Plumbing fittings	600	325	275	*
Commercial Printing Co. (1955)	Job printing, book pub- lishing, off- set printing	3	1	2	
McGahan Feed Co. (1942)	Feed	7	5	2	
Paintsville Outerwear, Inc. (1963)	Men's and boys' outerwear	72	8	64	*
Sandy Valley Press, Inc. (1964)	Newspaper, job printing	9	4	5	
Wells Machine Shop (1952)	Machine shop	3	3	0	

*See Labor Organizations below.

Source: Kentucky Department of Commerce, Division of Research and Planning.

LABOR ORGANIZATIONS

<u>Union</u>	<u>Representing manufacturing workers at:</u>
Steelworkers	American Standard, Inc.
Amalgamated Garment Workers of America	Paintsville Outerwear, Inc.

ESTIMATED MALE LABOR SUPPLY PAINTSVILLE LABOR MARKET AREA

<u>Area</u>	Current			Future	
	Total	Not in Labor Force	Unemployed	Under- employed	Reaching 18 yrs. of age before 1981
Labor Market					
Area	11,400	7,290	2,310	1,800	5,298
Johnson	2,280	1,560	410	310	903
Floyd	4,310	2,830	830	650	1,994
Lawrence	1,390	950	230	210	561
Magoffin	1,850	1,330	390	130	648
Martin	780	470	140	170	596
Morgan	790	150	310	330	596

Sources: Kentucky Department for Human Resources, Kentucky Labor Supply Estimates by County, 1974. Kentucky Department of Commerce, Future Labor Supply before 1981.

ESTIMATED FEMALE LABOR SUPPLY PAINTSVILLE LABOR MARKET AREA

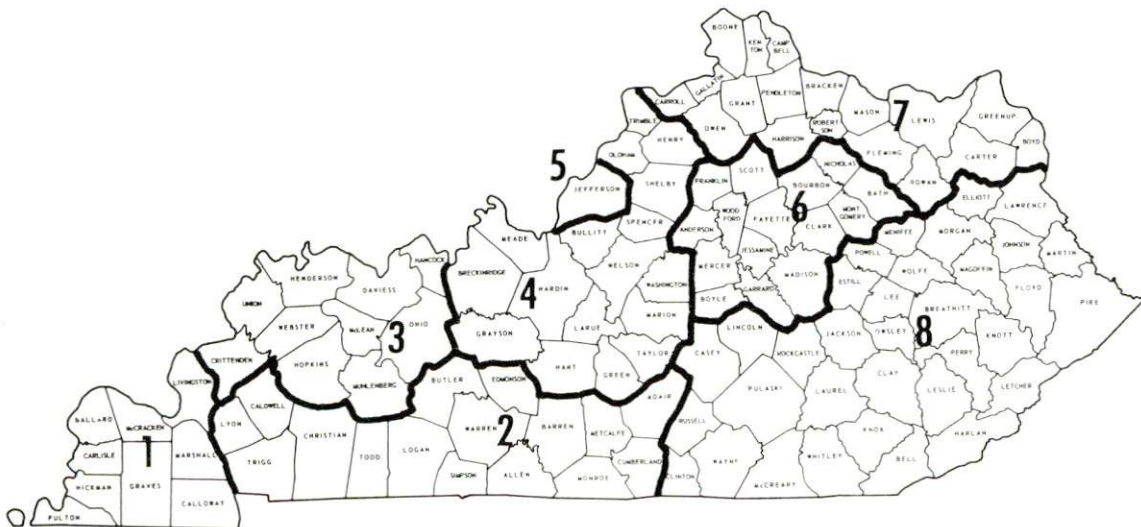
<u>Area</u>	Current			Future	
	Total	Not in Labor Force	Unemployed	Under- employed	Reaching 18 yrs. of age before 1981
Labor Market					
Area	8,840	7,100	400	1,340	5,047
Johnson	1,610	1,260	70	280	855
Floyd	3,380	2,660	140	580	1,906
Lawrence	1,330	990	50	90	552
Magoffin	1,220	1,050	70	100	619
Martin	860	680	20	160	575
Morgan	640	460	50	130	540

Sources: Kentucky Department for Human Resources, Kentucky Labor Supply Estimates by County, 1974. Kentucky Department of Commerce, Future Labor Supply before 1981.

WAGES

Occupational wage rates for specific industries are usually not available to most government agencies, and wage data furnished to state employment agencies by industrial employers is protected from disclosure by federal law. The most reliable up-to-date wage information can be obtained by direct contact with local employers.

Associated Industries of Kentucky, a voluntary organization of Kentucky businesses, regularly collects occupational wage rates and fringe benefits data from participating member firms. Data is compiled for over 130 clearly defined office, production, and service occupations. Tabulations are published for eight regions of Kentucky, as shown on the map below. It should be noted that the data may be weighted by the preponderance of firms in the larger cities and may be somewhat higher than the rates paid in the smaller communities. Data from these tabulations are available, upon request, from the Kentucky Department of Commerce, Frankfort, Kentucky 40601.



Associated Industries of Kentucky Area Wage Surveys

PER CAPITA PERSONAL INCOME

<u>Area</u>	<u>1973</u>	<u>1969</u>	<u>% Change</u>
Johnson County	\$3,021	\$2,065	+46.3
Labor Market Area Range	\$2,115 - 3,021	\$1,199 - 2,065	N.A.
Kentucky	4,050	2,894	+39.9
U. S.	5,041	3,733	+35.1

Sources: U. S. Department of Commerce, Office of Business Economics, Survey of Current Business, August, 1974. U. S. Department of Commerce, Bureau of Economic Analysis, April, 1975.

TRANSPORTATION

Rail

Line serving Paintsville - The Chessie System

Services - Freights stop on demand, 5 eastbound and 5 westbound through freights daily; switching facilities; team track for 8 cars; siding space for approximately 30 cars; nearest piggyback facilities at Huntington, West Virginia, 65 miles distant

For details on routing, schedules, rates, and services, contact:

General Manager, Freight Service
The Chessie System
603 B & O Central Building
2 North Charles Street
Baltimore, Maryland 21201
(301) 237-2000

Highways

U. S. Highways 23 and 460, both "AAA" trucking routes, and Kentucky Highway 40 serve Paintsville. The Mountain Parkway is located only 19 miles away at Salyersville. Access to the Mountain Parkway will be greatly improved with the completion of a new highway between Paintsville and Salyersville. This highway, already under construction, will be a two-lane highway with passing lanes on the inclines. I-64 is approximately 45 miles north of Paintsville via two-lane Kentucky 201.

Truck Service

Company

Hogan Storage & Transfer Co.

Point Express, Inc.

Smith's Transportation
Corporation of Virginia

Home Office

721 East Fourth Avenue
Williamson, West Virginia 25661
P. O. Box 10185, Station C
Charleston, West Virginia 25312
P. O. Box 1000
Staunton, Virginia 24401

Other Freight Services

United Parcel Service

Nearest Shipping Center

Salyersville, 18 miles distant

HIGHWAY MILES AND TRUCK TRANSIT TIME IN DAYS FROM
PAINTSVILLE, KENTUCKY, TO SELECTED MARKET CENTERS

City	Delivery		City	Delivery	
	Highway Miles	Time TL		Highway Miles	Time TL
Atlanta, Ga.	476	2	Los Angeles, Calif.	2,288	7
Birmingham, Ala.	537	2	Louisville, Ky.	180	2
Chicago, Ill.	472	2	Nashville, Tenn.	318	2
Cincinnati, Ohio	186	1	New Orleans, La.	879	3
Cleveland, Ohio	369	2	New York, N. Y.	680	2
Detroit, Mich	445	2	Pittsburgh, Pa.	339	2
Knoxville, Tenn.	283	2	St. Louis, Mo.	443	2

Source: Delivery Time only - Point Express, Inc., P. O. Box 10185, Station C, Charleston, West Virginia 25312.

Air

	<u>Local</u>	<u>Nearest Commercial</u>
	Combs Airport	Tri-State Airport (Walker-Long Field)
Location:	5 miles south of Paintsville	Huntington, West Virginia, 57 miles north of Paintsville
Runways:	1 paved	2 paved
Length:	3,200 feet	6,500 and 3,000 feet
Traffic		
Control:	Wind sock	Tower, approach and ground control, ILS system
Lighting:	None	Beacon, runway and obstructions lighted
Services:	80-100 octane	Allegheny and Piedmont Airlines; jet fuel, 80-87 and 100-130 octane; restaurant; storage; taxi and car rentals; flight instruction; charter
Air Freight Service:		Accepted on a space available basis

Bus - Southern Greyhound Bus Lines

Taxi - Six companies, 24-hour service

Rental Services - Automobile and truck rentals

POWER AND FUEL

Electricity

Company serving Paintsville and parts of Johnson County - Kentucky
Power Company

Source of power - Kentucky Power Company

Total generating capacity - 1,065,000 KW

For industrial rates contact:

Kentucky Power Company
Third Street
Paintsville, Kentucky 41240
(606) 789-4611

Company serving Johnson County - Big Sandy RECC

Source of power - East Kentucky Power Cooperative

Total generating capacity - 496,000 KW

For industrial rates contact:

Big Sandy RECC
P. O. Box 671
Paintsville, Kentucky 41240
(606) 789-4095

Natural Gas

Company serving Paintsville - Paintsville Gas and Water Company

Source of supply - Kentucky-West Virginia Gas Company

Size of transmission mains - 8 inches (supplier); 6 inches (distributor)

Distribution mains - 2 to 4 inches

Distribution pressure - 15 psi

Btu content-1,000 per cubic foot

Specific gravity - .69

For rates and supplies contact:

Paintsville Gas and Water Company
City Hall
Paintsville, Kentucky 41240
(606) 789-3361

Other Fuels

Propane and butane

B & W Gas and Appliance Company
Staffordsville, Kentucky 41256
Comstock's Bottle Gas
Martin, Kentucky 41649
Doxol Gas Of Prestonsburg, Inc., Bull Creek Road
Prestonsburg, Kentucky 41653
Hardware Charlie Gas Company, U. S. Highway 23
Paintsville, Kentucky 41240
Pierce's Bottle Gas Company
Wayland, Kentucky 41666
Scarberry's Bottle Gas Company, Boone Street
Louisa, Kentucky 41230
Williams Energy Company, Bypass
Paintsville, Kentucky 41240

Fuel oils

Distillate fuel oil -

Ashland Oil Company, Bulk Plant
Falcon, Kentucky 41426
Ashland Petroleum Company, Bypass
Paintsville, Kentucky 41240
Moore Brothers Oil Company
Allen, Kentucky 41601
Somerset Oil Company
Salyersville, Kentucky 41465
Standard Oil Company
Salyersville, Kentucky 41465
Texaco, Inc.
Salyersville, Kentucky 41465

Residual fuel oil - arrangements must be made with the refinery.

Low sulphur content coal - Available locally.

WATER AND SEWERAGE

Water

Company serving Paintsville - Paintsville Gas and Water Company
City Hall
Paintsville, Kentucky 41240
(606) 789-3361

Source - Levisa Fork of the Big Sandy River
Treatment plant capacity - 1,500,000 gpd
Average daily consumption - 1,200,000 gallons
Peak daily consumption - 1,500,000 gallons
Type treatment - Alum, lime, soda ash, chlorine, charcoal, fluoride,
sand filter
Storage capacity - 1,160,000 gallons
Size lines - 10, 8, and 6 inches
Average pressure - 85 to 110 psi

MONTHLY WATER RATES FOR WHOLESALE AND INDUSTRIAL CONSUMERS

Inside City Limits

2,000 gallons		\$ 2.25 (Min. Bill)
5,000 gallons	@ \$.90	4.95
10,000 gallons	@ .80	8.95
25,000 gallons	@ .70	19.45
50,000 gallons	@ .60	34.45
100,000 gallons	@ .50	59.45
All over 100,000 gallons	@ .40 per 1,000 gallons	

Outside City Limits

2,000 gallons		\$ 2.81 (Min. Bill)
3,000 gallons	@ 1.13	6.20
5,000 gallons	@ 1.00	11.20
15,000 gallons	@ .88	24.40
25,000 gallons	@ .75	43.15
50,000 gallons	@ .63	74.65
All over 100,000 gallons	@ .50 per 1,000 gallons	

Tap-on charge: \$35.00

Surface water sources - Levisa Fork of Big Sandy River
Average discharge - Levisa Fork at Paintsville 2,454 cfs (47 years,
USGS)
Expected ground water yield - Northwest half 50 to 200 gpm; southeast
half 5 to 50 gpm

Sewerage

Company serving Paintsville - Paintsville Gas and Water Company
City Hall
Paintsville, Kentucky 41240
(606) 789-3361

Design capacity - 730,000 gpd
Average daily flow - 475,000 gallons
Treatment - Primary*
Type treatment - Clarifier, digester, and drying beds
Treated effluent discharged into - Levisa Fork of Big Sandy River
Size of sanitary mains - 8 inches
Size of storm mains - 18 to 24 inches

Rates - 70 percent of monthly water bill

Tap-on charge: \$100 - residential
150 - commercial

*Applying for federal funds to install secondary treatment equipment.

CLIMATE

Johnson County

Temperature

Annual mean (30-year record)	56.1 degrees
Average annual 1974	56.6 degrees
Record highest, July, 1970 (13-year record)	95.0 degrees
Record lowest, January, 1966 (13-year record)	-15.0 degrees
Normal heating degree days (30-year record)	4,306
(Heating degree day totals are the sums of negative departures of average daily temperatures from 65 degrees F.)	

Precipitation

Mean annual total (30-year record)	41.47 inches
Mean annual snowfall (37-year record)	15.90 inches
Total precipitation 1974	46.38 inches
Mean number days precipitation (.01 inch or more) (29-year record)	134
Average number days thunderstorms (31-year record)	46

Prevailing Winds (9-year record)

West-southwest

Relative Humidity (13-year record)

1 a. m.	81 Percent
7 a. m.	85 Percent
1 p. m.	57 Percent
7 p. m.	64 Percent

Source: U. S. Department of Commerce, Environmental Science
Services Administration, Climatological Data, 1974.
Station of record: Bristol, Johnson City, and Kingsport,
Tennessee.

LOCAL GOVERNMENT

City

Structure - Mayor - 4-year term; 6 councilmen - 2-year terms

Budget 1975-76 - General Fund	\$454,529.61
Water and Sewer Fund	231,634.98

Fees and licenses - Occupational license varies from \$5 to \$200 per year; 1 percent occupational license tax on wages and net profits

County

Structure - County Judge - 4-year term; 3 commissioners - 4-year terms

Budget 1974-75 - General Fund	\$161,140
Road Fund	70,000

Assessed Value of Property, 1975

<u>Classes of Property</u>	<u>Paintsville</u>	<u>Johnson County</u>
Real Estate	\$23,970,820	\$75,369,281
Tangibles	14,464,255	40,836,226

Property Taxes

Land and buildings are taxed by the state and may be taxed by local jurisdictions. The state rate is \$0.015 per \$100 of assessed valuation.

Tangible personal property owned by manufacturers (automobiles, trucks, finished goods, office furniture, office equipment) is taxed by the state at \$0.15 per \$100 and may be taxed by local jurisdictions.

Manufacturing machinery, raw materials inventories, pollution control equipment and goods in process inventories are not subject to local taxation. The state rate is \$0.15 per \$100.

Property stored in public warehouses is not subject to local taxation. The state rate is only \$0.015 per \$100.

All property is assessed at 100 percent of fair cash value.

Local Property Tax Rate Per \$100 of Assessed Valuation, 1975*

<u>Taxing Jurisdiction</u>	<u>Paintsville</u>	<u>Johnson County</u>
County	\$.2350	\$.235
School	.7050	.680
City	.1933	

Special (not county wide): Forest - 2¢ per acre

Planning and Zoning

City agency - Paintsville Planning and Zoning Commission
 Zoning enforced - City only
 Subdivision regulations enforced - City and 5 miles beyond city limits
 Local codes enforced - Housing and building
 Mandatory state codes enforced - Plumbing, National Fire Protection Association Code, National Building Code (for major buildings and residential construction containing more than 12 bedrooms per building)

Safety

<u>Police</u>	<u>Paintsville</u>	<u>Johnson County</u>
Total staff	9	5
Radio-patrol cars	4	2

Fire

American Insurance Association Fire Rating	6	
Full-time staff	5	
Volunteers	24	45 (3 stations)

Rescue Service

Paintsville-Johnson County Civil Defense
 Number of volunteers - approximately 75
 Equipment - Ambulance, 2 boats and motors, plus all the city and county fire equipment; radio network established in order to provide a flash flood warning system
 Personnel training - EMT, First Aid training

*Kentucky Department of Revenue.

Solid Waste

Paintsville

Type service	Municipal
Fee charge:	
residential	\$2 per month
business	Varies from \$4 to \$40 per month
industrial	Varies from \$4 to \$40 per month
Collection frequency:	
residential	Weekly
business	Contract
industrial	Contract
Disposal method	Landfill

EDUCATION

Public Schools

	<u>Paintsville Independent</u>	<u>Johnson County</u>
Total Enrollment (Fall, 1975)	906	3,915
Elementary	441	2,796
High School	465	1,119
Student-Teacher Ratio	17-1	18-1
Elementary	17-1	18-1
High School	18-1	18-1
Accreditation	Southern Association of Schools and Colleges	
Percent High School Graduates to College	53.3	20.0
Expenditures Per Pupil (1973-74)	\$643.67	\$526.26
Bonded Indebtedness, June 30, 1974	\$606,000	\$2,495,000

Nonpublic Schools

Total Enrollment	75
Elementary	75
Student-Teacher Ratio	19-1
Elementary	19-1

Area Colleges and Universities

<u>Name</u>	<u>Location</u>	<u>Distance (Miles)</u>	<u>Enrollment (Fall, 1974)</u>	<u>Highest Degree Conferred</u>
Alice Lloyd Junior College	Pippa Passes	55	282	Associate
Ashland Community College	Ashland	64	1,253	Associate
Lees Junior College	Jackson	57	273	Associate
Morehead State University	Morehead	67	6,765	Masters, Ph. D. *
Pikeville College	Pikeville	42	439	Baccalaureate
Prestonsburg Com- munity College	Prestonsburg	13	481	Associate

*Cooperative program with the University of Kentucky for a Ph. D. in education only.

Vocational Schools

Nearest State School

Location	Mayo State Vocational-Technical School Paintsville
Curriculum	Accounting Junior Management Secretarial General Business Data Processing Practical Nursing Electronics (Industrial and Communications) Highway Technology Instrumentation Technical Drafting Tool and Die Design Tool and Die Making Auto Mechanics Auto Body Repair Diesel Mechanics Cosmetology Carpentry Drafting Printing Electricity Mine Mechanics Radio and TV Repair Welding Machine Shop

Arrangements can be made to provide training in the specific production skills required by an industrial plant. Instruction may be conducted either in the vocational school or in the industrial plant, depending upon the desired arrangement and the availability of special equipment.

HEALTH

Local Medical Personnel

Physicians - 18

Dentists - 4

Hospitals

<u>General Hospitals</u>	<u>Location</u>	<u>Beds</u>
Paintsville Hospital	Paintsville	72
Highlands Regional Medical Center	Prestonsburg	150

Paintsville Hospital

General hospital facilities and services - X-ray, emergency room, delivery room, laboratory, nursery, obstetrical room, new born nursery, 2 operating rooms, EKG, inhalation therapy, and pediatric department

Medical staff - 7 active staff doctors, 3 associate staff doctors, 7 consulting doctors, 1 dentist, 1 podiatrist, 17 graduate licensed practical nurses, 4 licensed practical nurses, and 3 consulting pathologists

Highlands Regional Medical Center

General hospital facilities - 4 operating rooms, 4-room emergency suite, diagnostic X-ray, nuclear medicine, clinical laboratory, pulmonary function laboratory, 4-bed recovery room, 6-bed coronary care/intensive care unit, physical therapy, EKG, 2 delivery rooms, premature infant nursery, 4-bed pediatric unit, OBGYN, general surgery, urology, orthopedics, 49-bed skilled nursing facility

Medical staff - 11 family practitioners, 4 internists, 2 emergency room physicians, 1 urologist, 1 obstetrician, 1 orthopedist, 35 registered nurses, 36 licensed practical nurses

Ambulance Service

Name - Burchett's Ambulance Service

Staff - 1 full-time and 9 part-time members with Emergency Medical Training

Service - 24-hour service throughout the county

Nursing Homes

	<u>Number</u>	<u>Beds</u>
Personal care homes	1	50

Public Health

Facility - Johnson County Health Department

Staff - Administrator, 3 clerks, 2 health aides, family planning aide, 2 licensed practical nurses, 1 registered nurse (full time), 4 registered nurses (part time)

OTHER LOCAL FACILITIES

Communications

Paintsville

Johnson City

Telephone - South Central Bell Telephone
Company

Services - Standard

Telegraph - Western Union
Services - Telephone, mail

Postal - U. S. Post Office
Class - First
Mail received - Twice daily
Mail dispatched - Twice daily

Newspaper - The Paintsville Herald
Weekly and circulation - 4,400
Other papers received from - Ashland, Lexington,
and Louisville, Kentucky; Huntington, West Virginia

Radio - WSIP AM-FM
Stations received from - Ashland, Prestonsburg,
Pikeville, Lexington, and Louisville, Kentucky;
Huntington, West Virginia

Television -
Cable service
Reception from - Lexington, Kentucky; Huntington and
Charleston, West Virginia
Kentucky Educational Television - Morehead transmitter,
Channel 38

Library Services

Public library - Johnson County Public Library
Size collection - 31,000 volumes
Circulation, 1974-75 - 180,000
Services - Records, art, films, projectors, story hour,
recreation equipment, reference service

Religious Institutions

Number of churches - 14

Denominations - Baptist, Catholic, Christian, Church of Christ,
Church of God, Methodist, Pentecostal

Nearest synagogue - Ashland, 64 miles distant

Congregation - Agudath Achim (reform)

Financial Institutions

<u>Banks</u>	<u>Assets</u>	<u>Deposits</u>	<u>Statement Date</u>
Citizens National Bank	\$40,178,467.57	\$36,282,417.23	6/30/75
The First National Bank of Paintsville	24,014,184.55	22,035,209.90	6/30/75
<u>Savings and Loan Association</u>	<u>Assets</u>	<u>Shared Accounts</u>	<u>Statement Date</u>
First Federal Savings and Loan Association	\$25,057,974.82	\$20,070,952.52	12/31/74

Hotels and Motels

Total number - 6

Total units - 163

Clubs and Organizations

Business and Civic - Paintsville Chamber of Commerce, Kiwanis
Club, Rotary Club, Jaycees

Fraternal - Masons, Elks, IOOF, American Legion, DAV

Women's - Woman's Club, Rebekah, American Legion Auxiliary,
DAR, Eastern Star, Homemakers, Business and Professional
Women's Club, Beta Sigma Phi, Garden Club, Jaycettes, Junior
Woman's Club

Youth - Boy Scouts, Cub Scouts, Brownies, Girl Scouts, FFA, FHA,
Rainbow Club, 4-H Club, Little League and Pony League baseball

RECREATION

Local

The city operates a park and playground which covers a 16-acre area inside the city limits. Facilities include a modern swimming pool with separate wading pool and brick bathhouse, three all-weather tennis courts, all-weather basketball and volleyball courts, lighted softball and baseball diamonds, croquet and horseshoe courts, and picnic tables and grills. A full-time park supervisor is employed during the summer months.

The city has recently completed a multipurpose community center for all age groups. Adjacent to the center is a 5-acre recreation area that is nearing completion. The park features a picnic area, little league baseball diamond, general purpose football field, and basketball, volleyball, and handball courts.

Paintsville also has an 18-hole golf course and modern country club. The facilities of this club are open to the public. Several notable golf tournaments are held there each year.

A stadium owned by the Paintsville Independent School District is the site for football games, an annual horse show and events connected with the annual Apple Festival.

Area (Within 15 miles)

Jenny Wiley State Resort Park, 10 miles distant, affords a variety of recreational activities on 880-acre Dewey Lake, surrounded by 7,000 acres of forest. Facilities include a lodge, cottages, 9-hole golf course, camping and picnic areas, riding stables, sky lift, and an amphitheater which features summer musicals.

COMMUNITY IMPROVEMENTS

Recent:

The city constructed an office, maintenance, and storage building for the gas, water, and sewer departments.

The city gas system has installed new lines throughout the city.

The water treatment plant capacity has been increased by 50 percent.

A multipurpose community center for all age groups has been completed. A 5-acre recreation area, adjacent to the community center, is nearing completion. Facilities will include a picnic area, little league baseball diamond, general purpose football field, outdoor basketball court, and handball and volleyball courts.

Planned:

The Johnson County School System plans to construct a new middle school. The county school system in cooperation with the Paintsville Independent School District plans to build joint city-county vocational school facilities.

Installation of secondary treatment equipment at the sewage treatment plant is planned.

Underway:

Two urban renewal projects are now underway. One project has cleared away deteriorated housing for the preparation of a 14-acre industrial site. Contracts that are now being let include: construction of streets; installation of water and sewer lines; and construction of a bridge that will connect the industrial site and U. S. Highway 23. Funds have already been obtained for the other project, renovation of the downtown business district. The city plans to construct an elevated 250-car parking facility, and a tourist information center and rest area.

A new two-lane highway with passing lanes on the inclines is being constructed between Paintsville and Salyersville.

Two new businesses are establishing in Paintsville as a result of the coal boom. One business, which realigns heavy equipment, is constructing new facilities. Also, a coal company intends to construct a maintenance and warehousing facility on a 40-acre site adjacent to the city limits. This facility, employing 100 to 200 people, will be the service center for the company's coal operations in eastern Kentucky and West Virginia.

HISTORY

Johnson County, the ninety-seventh county formed in the state, contains 264 square miles and dates from 1843. Its land area was taken from Floyd, Lawrence, and Morgan Counties. The Levisa Fork of the Big Sandy River and its tributaries drain the county. These streams have chiseled that section of the Cumberland Plateau into a network of low hills and shallow valleys. The average elevation of the county is under 700 feet above sea level, while 100 miles to the south the elevation is 1,000 feet higher.

The first man to traverse Johnson County territory was Dr. Thomas Walker who was in the employ of the Loyal Land Company. Soon several members of the Long Hunters came into the area. Five miles upstream from Paintsville is a fifty-acre tract now known as Block House Bottom, where Matthias Harman built a hunting lodge. Several years later in 1787 he returned and built a fort at present day East Point. It was from this station that settlers went out to establish Paintsville, Prestonsburg, Pikeville, and other nearby communities. It was also to this fort that Jenny Wiley, the pioneer heroine of Eastern Kentucky, fled after a dramatic escape from the Indians. Her name is preserved today in the Jenny Wiley State Park on Dewey Lake a few miles over in Floyd County.

Paintsville, the county seat, dates from 1810 and was named for Paint Creek, which flows through the town. Early settlers found many of the large trees along the creek stripped of their bark and embellished with drawings of birds and animals, painted in red and black on the smooth undertrunks. They also found odd figures of buffalo and deer painted on the clifflike sandstones along the stream. The town was settled by families from East Point who were searching for fertile lands.

Johnson County was named for Colonel Richard M. Johnson of Scott County. He was educated at Transylvania University, passed the bar examination at the age of nineteen, served in the State Assembly at the age of twenty-two, was elected to the National Congress when only twenty-four (he took his seat a few days after he reached twenty-five), was a United States Senator, and in 1836 was named the vice-president elect.

The 1850 population of Johnson County was 3,873. The population steadily increased until 1940 when the county reached an all time high of 25,771. Then the population slowly declined to the 1970 figure of 17,539. In 1974, the population was estimated at 19,500.

The total number of Johnson County residents employed in 1974 averaged 6,320, including 80 in agriculture and 990 in government. Manufacturing employers in the county reported 500 workers; trade and services firms employed 1,580; mining employed 500. Largest of Paintsville's manufacturing firms is American Standard, Inc., which manufactures plumbing fittings.