

1972

Industrial Resources: Martin County - Inez

Kentucky Library Research Collections
Western Kentucky University, spcol@wku.edu

Follow this and additional works at: https://digitalcommons.wku.edu/martin_cty



Part of the [Business Administration, Management, and Operations Commons](#), [Growth and Development Commons](#), and the [Infrastructure Commons](#)

Recommended Citation

Kentucky Library Research Collections, "Industrial Resources: Martin County - Inez" (1972). *Martin County*. Paper 7.
https://digitalcommons.wku.edu/martin_cty/7

This Report is brought to you for free and open access by TopSCHOLAR®. It has been accepted for inclusion in Martin County by an authorized administrator of TopSCHOLAR®. For more information, please contact topscholar@wku.edu.

INDUSTRIAL RESOURCES

INEZ **KENTUCKY**



MARTIN COUNTY, KENTUCKY

INEZ INDUSTRIAL SITES

1972

INEZ INDUSTRIAL SITES

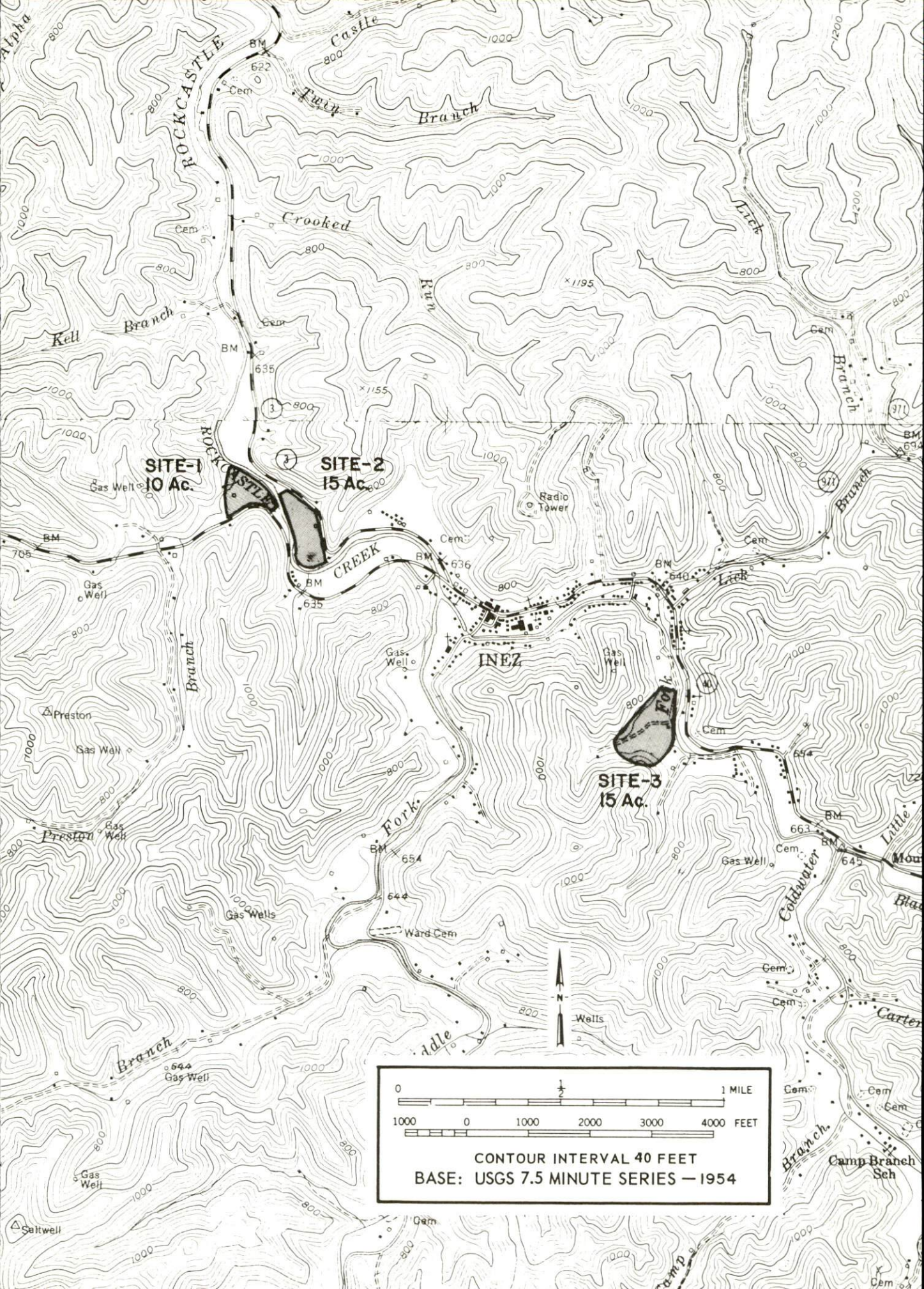
1972

For more information about the following sites, contact Mr. Eugene Ward, Martin County Development Association, Inez, Kentucky; or the Kentucky Department of Commerce, Frankfort, Kentucky 40601.

SITE #1: ACREAGE: 10 to 12 acres
LOCATION: Approximately 1 mile northwest of Inez along Kentucky 3
HIGHWAY ACCESS: Kentucky 40 along southern boundary of site
RAILROADS: Not rail served
WATER: Martin County Water District No. 1
SIZE LINE: 8-inch line approximately 300 feet north of site
GAS: Columbia Gas of Kentucky
SIZE MAIN: 10-inch main approximately 800 feet northeast of site
ELECTRICITY: Kentucky Power Company
SEWERAGE: Package plant necessary
OWNERSHIP: Private

SITE #2: ACREAGE: 15 acres
LOCATION: Approximately three-fourth mile northwest of Inez along Kentucky 3
HIGHWAY ACCESS: Kentucky 3 along eastern boundary of site
RAILROADS: Not rail served
WATER: Martin County Water District No. 1
SIZE LINE: 8-inch line on northeast side of site
GAS: Columbia Gas of Kentucky
SIZE MAIN: 10-inch main approximately 100 feet east of site across Kentucky 3
ELECTRICITY: Kentucky Power Company
SEWERAGE: Package plant necessary
OWNERSHIP: Private

SITE #3: ACREAGE: 15 acres
LOCATION: Approximately three-fourth mile southeast from Inez on Kentucky 40
HIGHWAY ACCESS: Unimproved access road on site leads to Kentucky 40
RAILROADS: Not rail served
WATER: Martin County Water District No. 1
SIZE LINE: 8-inch line approximately 200 feet northeast of site
GAS: Columbia Gas of Kentucky
SIZE MAIN: 10-inch main approximately 200 feet northeast of site
ELECTRICITY: Kentucky Power Company
SEWERAGE: Package plant necessary
OWNERSHIP: Private



SITE-1
10 Ac.

SITE-2
15 Ac.

SITE-3
15 Ac.

CONTOUR INTERVAL 40 FEET
BASE: USGS 7.5 MINUTE SERIES — 1954

INDUSTRIAL RESOURCES

INEZ, KENTUCKY

Prepared by

The Kentucky Department of Commerce

in cooperation with

The Martin County Development Association

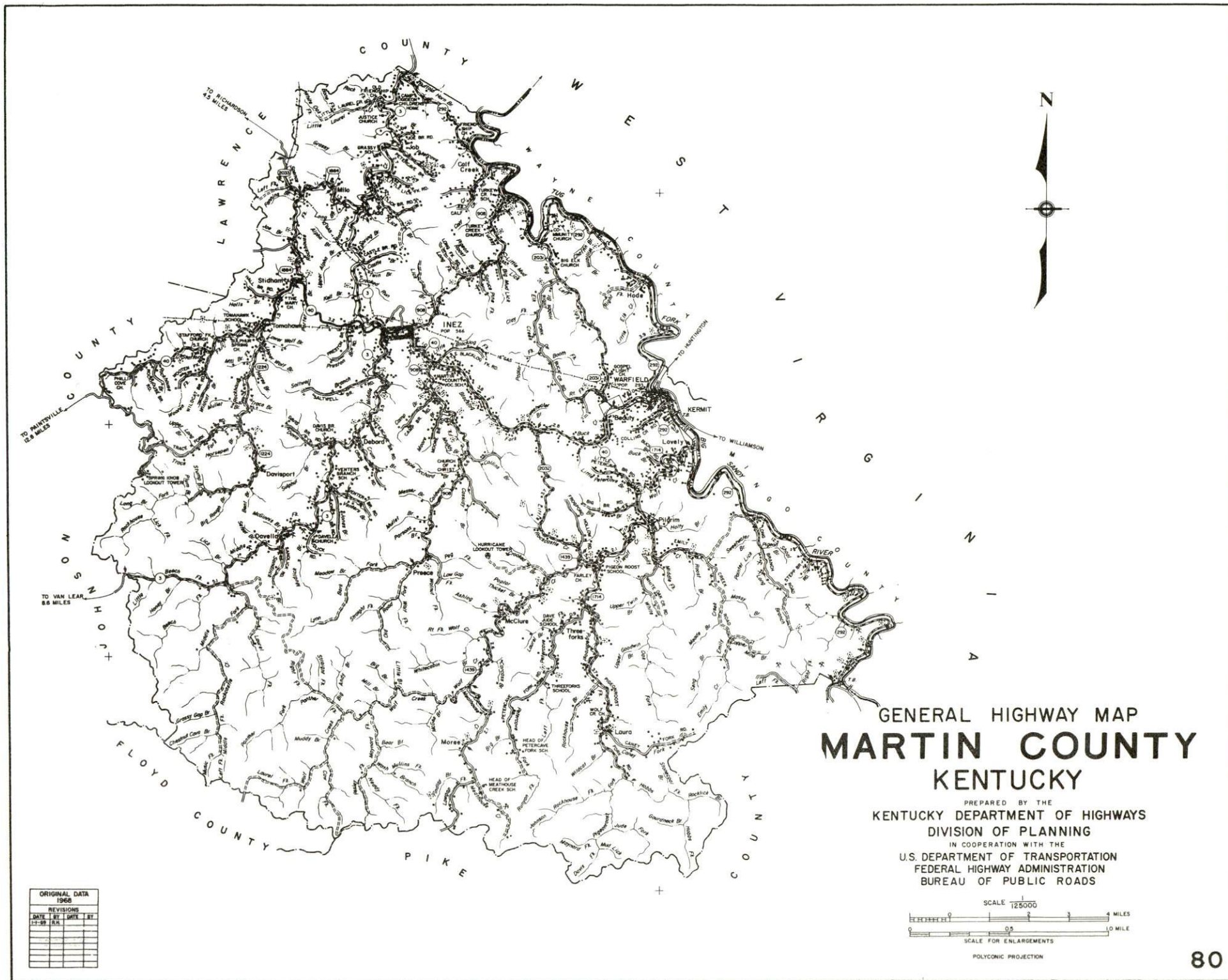
1972

This copy has been prepared by the Kentucky Department of Commerce,
Division of Research and Planning, and the cost of printing paid from
state funds.

TABLE OF CONTENTS

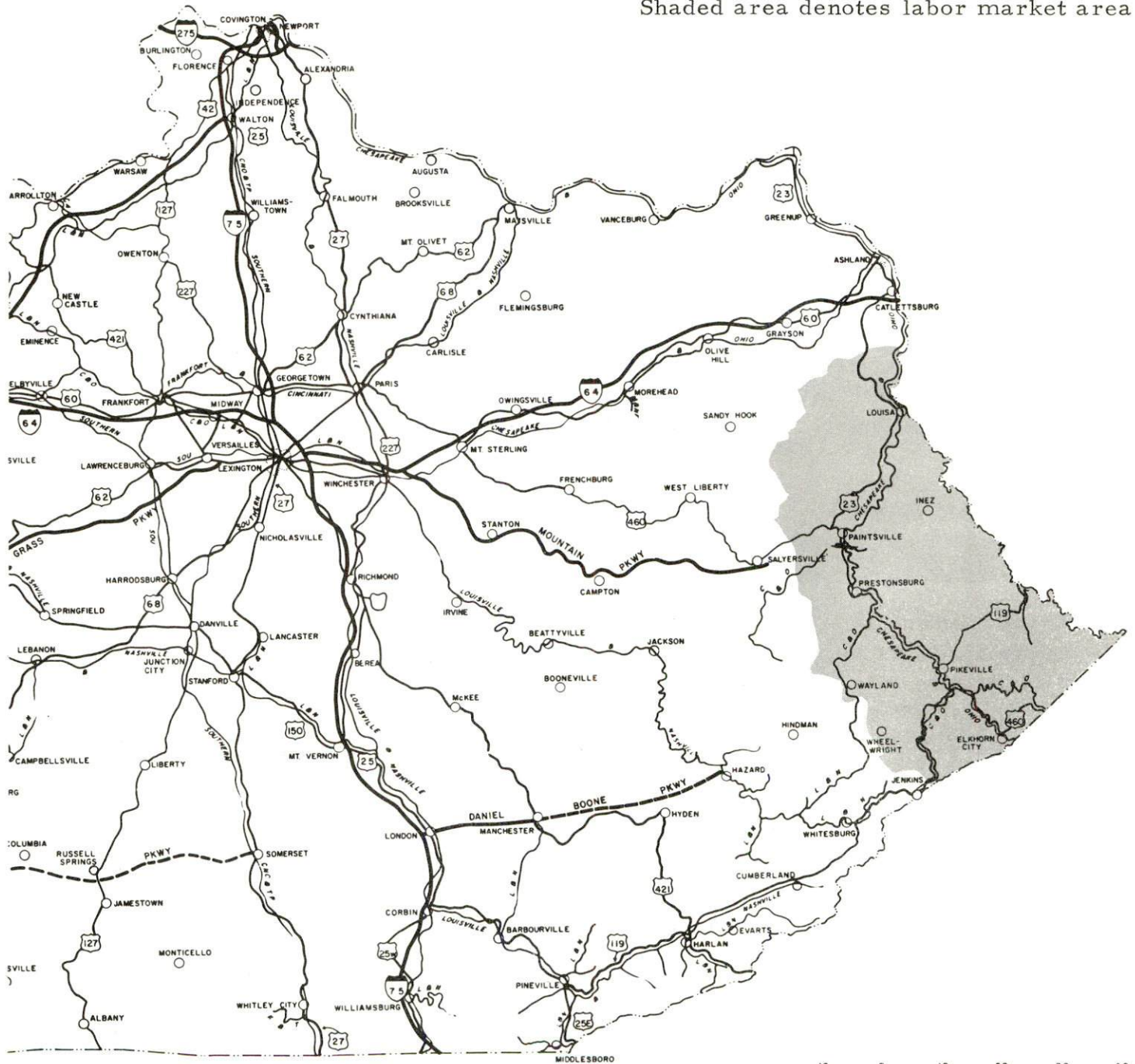
<u>Chapter</u>	<u>Page</u>
INDUSTRIAL SITES	i
INEZ, KENTUCKY - A RESOURCE PROFILE	1
THE LABOR MARKET.	4
Population Trends.	4
General Employment Characteristics, 1971	4
Manufacturing Employment Trends by Industry.	4
Wage Rates.	5
Current and Future Labor Supply	5
Total Personal Income.	5
Per Capita Personal Income	6
EDUCATION	7
Public Schools	7
Vocational Schools	7
Colleges and Universities	8
TRANSPORTATION.	9
Rail.	9
Truck Service	9
Air	10
POWER AND FUEL.	11
Electricity	11
Natural Gas	11
Other Fuels	11
WATER AND SEWERAGE	12
Water	12
Sewerage	12

<u>Chapter</u>	<u>Page</u>
LOCAL GOVERNMENT	13
City.	13
County.	13
Assessed Value of Property - 1971.	13
Local General Property Tax Rates Per \$100 of Assessed Valuation - 1971.	13
Planning and Zoning	13
Safety.	14
Police	14
Fire	14
Sanitation	14
HEALTH	15
Hospitals	15
Public Health.	15
OTHER LOCAL FACILITIES.	16
Communications	16
Library Services.	16
Religious Institutions	16
Financial Institutions	16
Hotels and Motels.	16
Clubs and Organizations.	17
RECREATION	18
Local	18
Area	18
AGRICULTURE - NATURAL RESOURCES - CLIMATE	19
Agriculture	19
Natural Resources	19
Climate	19
HISTORY	20



INEZ LABOR MARKET AREA

Shaded area denotes labor market area



INEZ, KENTUCKY - A RESOURCE PROFILE

Location

Inez, the county seat of Martin County, is located in the Eastern Coal Field Region of Kentucky. Ashland is approximately 58 miles to the north, Lexington 139 miles to the west, and Huntington, West Virginia, approximately 78 miles to the north.

The 1970 population of Inez was 469 and the population of Martin County was 9,377.

The Economic Framework

Total employment in Martin County in 1971 averaged 2,100 with agriculture providing 120 jobs, government 820, trade and services 115, mining and quarrying 454, and manufacturing 40.

Per capita personal income in the county in 1969 was \$1,150. Between 1959 and 1969, per capita personal income in the county increased approximately 173 percent.

The Inez labor market area includes Martin and the four surrounding counties. Area employment in 1971 totaled 34,100 jobs with agriculture providing 1,060, government 6,610, trade and services 7,960, mining and quarrying 8,790, and manufacturing 1,620. Industrial employment in this area has increased approximately 186 percent since 1961 with sharpest gains in apparel, leather, and machinery and metal products industries.

Despite important industrial gains in recent years the area still has a deficit of 13,829 manufacturing jobs when measured against the national industrial employment-population ratio. This indicates an area where the potential for additional manufacturing production is excellent.

Resources for Growth

1. There is a current estimated labor supply of 5,635 men and 10,400 women available for industrial jobs in the labor market area. In addition, 8,130 young men and 7,440 young women will become 18 years of age by 1978 and potentially available for work.

2. Rail service is available at Louisa, Kentucky, 27 miles distant, and at Kermit, West Virginia, 10 miles distant. Kentucky Highway 40 serves the area and links up with U. S. 460, which connects with the Mountain Parkway. The nearest commercial airport is 53 miles distant. The Combs Airport, located near Paintsville, 29 miles distant, is equipped to handle light aircraft.

3. Kentucky Power Company provides electric power to Inez and Martin County. Natural gas is furnished in Inez by Columbia Gas of Kentucky.

4. Industrial sites - Inez has 3 sites available for industrial use.

5. Education is an important growth asset for Martin County. A new consolidated school system will soon operate within the county. Two junior colleges, two community colleges and two senior colleges are located within 80 miles of the county.

The Mayo Area Vocational School is located in Paintsville, 24 miles distant, and offers training in twenty-five different courses. The Martin County Extension Center is located in Inez, and offers six different courses.

Community Programs for Improvement

A coal testing laboratory is now under construction for the Independent Mining and Equipment Corporation.

New businesses include the following: two florists, a laundromat, two law offices, an insurance agency, two new beauty and barber shops, three retail outlets for mobile homes, and a supermarket.

A new clubhouse has been built and will be shared by the Jaycees and Martin County Sportsman's Club. Property has been purchased for a two bay fire station and plans are being made to buy a new fire truck.

High schools in the county are being consolidated into the Martin County High School. This new building will be air conditioned and carpeted, and it is designed to accommodate 1,000 students. Teaching will be on three academic levels. A gymnasium with a capacity of 5,000 people is also being constructed. The expected date of completion for the school and gymnasium is the 1972-73 school term.

The Inez Supermarket and the Inez Drive-In Restaurant have both rebuilt their businesses.

Recreation, Entertainment, and Livability

Jenny Wiley State Park, located at Prestonsburg, Kentucky, 37 miles distant, consists of 1,700 acres of resort-type park on Dewey Lake. A lodge,

cottages, and camping accommodations are available. The park, surrounded by a 12,000-acre forest, offers lodge, pool, beach, bathhouse, boat and motor rental, paddle boats, docks, launching ramp, fishing, lighted 9-hole golf course, tennis, riding stable, supervised recreation, lake cruises, shuffleboard and playgrounds. Plays are performed in the park's amphitheater during the summer months.

Cabwaylingo State Forest, approximately 30 miles distant, in West Virginia, is an 8,125-acre forest, offering small game hunting, fishing, swimming pool, cabins and campsites.

THE LABOR MARKET

POPULATION TRENDS ^{1/}

	Population			Percent Change	
	1970	1960	1950	1960-70	1950-60
Inez	469	566	622	-17.1	- 9.0
Labor Market Area	134,590	151,989	184,595	-11.4	-17.7
Martin County	9,377	10,201	11,677	- 8.1	-12.6
Floyd County	35,889	41,642	53,500	-13.8	-22.2
Johnson County	17,539	19,748	23,846	-11.2	-17.2
Lawrence County	10,726	12,134	14,418	-11.6	-15.8
Pike County	61,059	68,264	81,154	-10.6	-15.9

GENERAL EMPLOYMENT CHARACTERISTICS, 1971 ^{2/}

Major Employment Group	Employment	
	Martin County	Labor Market Area
TOTAL	2,100	34,100
Agricultural	120	1,060
Nonagricultural	1,980	33,040
Manufacturing	40	1,620
Government	820	6,610
Trade and Services	115	7,960
Mining and Quarrying	454	8,796

MANUFACTURING EMPLOYMENT TRENDS BY INDUSTRY SEPTEMBER 1971 AND 1961 ^{3/}

Industry	Martin County			Labor Market Area		
	1971	1961	%Change	1971	1961	%Change
TOTAL	19	17	11.8	1,648	575	186.6
Food & kindred products	0	0	0	136	171	- 20.5
Tobacco	0	0	0	3	2	50.0
Apparel, textiles, leather	0	0	0	829	0	--
Lumber & furniture	19	17	11.8	139	246	- 43.5
Printing, publishing paper	0	0	0	34	36	- 5.6
Chemicals, petroleum, coal, rubber	0	0	0	42	41	- 2.4
Stone, clay & glass	0	0	0	90	48	87.5
Primary metals	0	0	0	0	0	0
Machinery & metal products	0	0	0	366	31	1,080.6
Other	0	0	0	9	0	--

WAGE RATES FOR SELECTED OCCUPATIONS
INEZ, KENTUCKY ^{5/}

<u>Classification</u>	<u>Wages Per Hour</u>		
	<u>Starting</u>	<u>Maximum</u>	<u>Prevailing</u>
<u>Production Employees</u>			
Welder, Arc or Acetylene	\$2.00	\$3.00	\$2.50
<u>Service Employees</u>			
Electrician	\$3.50	\$4.50	\$4.00
Laborer	1.60	1.60	1.60
Mechanic, Maintenance	1.70	2.00	1.85
Truck Driver	1.60	3.00	2.00
<u>Office Employees</u>			
Bookkeeper	\$1.60	\$3.00	\$2.00
File Clerk	1.60	1.60	1.60
Receptionist	1.60	2.00	1.70
Secretary	1.80	2.50	2.00
Typist	1.60	2.00	1.70

CURRENT AND FUTURE LABOR SUPPLY -
INEZ LABOR MARKET AREA

<u>Area</u>	<u>Current Labor Supply, 1971 ^{6/}</u>			<u>Future Labor Supply by 1978 ^{7/}</u> <u>(Becoming 18 Years of Age)</u>		
	<u>Total</u>	<u>Male</u>	<u>Female</u>	<u>Total</u>	<u>Male</u>	<u>Female</u>
Labor Market Area	16,037	5,637	10,400	15,571	8,130	7,441
Martin	1,264	568	696	1,202	628	574
Floyd	4,360	1,421	2,939	4,156	2,187	1,969
Johnson	2,523	1,217	1,306	1,838	982	856
Lawrence	1,775	852	923	1,194	631	563
Pike	6,115	1,579	4,536	7,181	3,702	3,479

TOTAL PERSONAL INCOME ^{8/}

<u>Area</u>	<u>1970</u>	<u>1960</u>	<u>% Change</u>
Martin County	14,632,000	3,679,000	+297.7
Labor Market Area	268,271,000	153,566,000	+ 74.7
Kentucky	9,719,647,000	4,779,695,000	+103.4

PER CAPITA PERSONAL INCOME ^{9/}

<u>Area</u>	<u>1970</u>	<u>1960</u>	<u>% Change</u>
Martin County	\$1,834	\$ 361	+408.0
Labor Market Area			
Range	\$1,834 - 2,273	\$361 - 1,207	N.A.
Kentucky	\$3,073	\$1,573	+ 95.4

EDUCATION

Public Schools

	<u>Martin County</u>
Total Enrollment	2,805
Elementary	1,905
High School	900
Student-Teacher Ratio	25-1
Elementary	26-1
High School	23-1
State Rating of High School	Basic (2)
Percent High School Graduates to College	33.3
Current Expenditures Per Pupil	\$439.02
Bonded Indebtedness, June 30, 1971	\$1,609,000

Vocational Schools

	<u>Nearest Area School</u>	<u>Nearest Extension Center</u>
Location	Mayo Area Vocational School Paintsville	Martin County Extension Center Inez
Miles Distant	24 miles distant from Inez	
Curriculum	Accounting Jr. Management Data Processing General Clerical Secretarial-Steno Practical Nursing Electronics (Communications) Electronics (Industrial) Electronics (Technology) Highway Technology Instrumentation Technical Drafting Tool and Die Design Auto Body Repair Auto Mechanics, Carpentry, Commercial Foods, Cosmetology, Radio and TV Repair, Diesel Mechanics, Printing, Drafting, Machine Shop, Welding, Electricity, Mine Machinery Mechanics	General Clerical Secretarial Steno Auto Mechanics Carpentry Drafting Electricity

Colleges and Universities

<u>Name</u>	<u>Area - Within 80 miles</u>		<u>Highest Degree Conferred</u>
	<u>Location</u>	<u>Enrollment</u>	
Pikeville College	Pikeville	794	Baccalaureate
Prestonsburg Community College	Prestonsburg	408	Associate
Alice Lloyd Junior College	Pippa Passes	268	Associate
Ashland Community College	Ashland	1,138	Associate
Lees Junior College	Jackson	423	Associate
Marshall University	Huntington, West Virginia	9,476	Masters

TRANSPORTATION

Rail

Line serving Inez - The Chesapeake and Ohio Railway Company, 27 miles distant at Louisa, Kentucky

Services - Freight, siding, switching, nearest piggyback facilities at Ashland, Kentucky, 58 miles distant; REA Express pickup and delivery at Paintsville, 24 miles distant.

The Norfolk and Western Railway Company provides Kermit, West Virginia, 10 miles distant, with freight service. Siding space is available.

RAILWAY TRANSIT TIME FROM LOUISA, KENTUCKY, TO: 10/

No. of Days		No. of Days	
City	CL	City	CL
Atlanta, Ga.	3rd A.M.	Los Angeles, Calif.	5th P.M.
Birmingham, Ala.	3rd A.M.	Louisville, Ky.	2nd P.M.
Chicago, Ill.	2nd A.M.	Nashville, Tenn.	3rd A.M.
Cincinnati, Ohio	1st P.M.	New Orleans, La.	3rd P.M.
Cleveland, Ohio	2nd P.M.	New York, N. Y.	4th A.M.
Detroit, Mich.	2nd P.M.	Pittsburgh, Pa.	4th A.M.
Knoxville, Tenn.	2nd P.M.	St. Louis, Mo.	4th A.M.

Truck Service

Company

Point Express, Inc.

Home Office

Charleston, West Virginia

HIGHWAY MILES AND TRUCK TRANSIT TIME IN DAYS FROM
INEZ, KENTUCKY, TO SELECTED MARKET CENTERS

City	Highway Miles	Delivery Time ^{10/}		City	Highway Miles	Delivery Time	
		LTL	TL			LTL	TL
Atlanta, Ga.	477	3	2	Los Angeles, Calif.	2,322	7	7
Birmingham, Ala.	543	3	2	Louisville, Ky.	214	3	2
Chicago, Ill.	514	3	2	Nashville, Tenn.	384	3	2
Cincinnati, Ohio	204	2	1	New Orleans, La.	894	4	3
Cleveland, Ohio	456	3	2	New York, N. Y.	754	3	2
Detroit, Mich.	404	3	2	Pittsburgh, Pa.	324	3	2
Knoxville, Tenn.	266	3	2	St. Louis, Mo.	474	3	2

Air

	<u>Local</u>	<u>Nearest Commercial</u>
Location:	Paintsville-Prestonsburg Approximately 29 miles distant from Inez	Tri-State Airport (Walker-Long Field) Kenova, West Virginia (approximately 53 miles from Inez)
Runways:	1 paved	1 paved *
Length:	2,800 feet	5,280 feet
Traffic:		
Control:	Wind sock and tetrahedron	Tower
Lighting:		Beacon, runway
Services:	80-100 octane. Charter flight instructions, cour- tesy car, tie down, air ambulance	80, 87, 100, 130 jet fuel, restaurant, storage, car rental, limousine, taxi, Eastern, Piedmont, Allegheny and Wright Airlines

*The Tri-State Airport is planning a 6.7-million dollar expansion project which will extend the runway to 6,500 feet, with a 1,000-foot graded overrun, a 3,000 by 60-foot crosswind runway, site preparation for installation of a complete instrument landing system, and an overlay of the existing pavement.

POWER AND FUEL

Electricity

Company serving Inez and Martin County - Kentucky Power Company
Source of power - Kentucky Power Company
Total generating capacity - 1,080,000 KW
Industrial rates furnished by - Kentucky Power Company, Ashland,
Kentucky

Natural Gas

Company serving Inez - Columbia Gas of Kentucky
Source of supply - Columbia Gas Transmission Company
Size of transmission mains - 10-inch (distributor)
Distribution mains - 6, 4, 3, and 2 inches
Distribution pressure - 6 ounces
BTU content - 1,175
Specific gravity - .65
Industrial rates negotiated by - Columbia Gas of Kentucky, Ashland,
Kentucky

Other Fuels

Propane - Western Auto Store and Wapokea Construction located in Inez

Distillate Fuel Oil - Ashland Petroleum Company, Big Sandy Petroleum
Company, Inc., Mountain Petroleum Company, Standard Oil Company and
Texaco Plant are located within 30 miles.

Residual Fuel Oil - Arrangements must be made with the refinery.

Coal - Low sulfur coal is available within the county.

WATER AND SEWERAGE

Water

Company serving Inez - Martin County Water District #1

Source - Impounded stream

Treatment plant capacity - 500,000 gpd

Average daily consumption - 65,000 gallons

Peak daily consumption - 80,000 gallons

Type treatment - coagulated, settled, filtered, chlorinated, fluoridated

Storage capacity - 250,000 gallons

Size mains - 8, 6, 4 inches

Average pressure - 85 psi

Average temperature - 60 degrees F.

MONTHLY WATER RATES FOR WHOLESALE AND INDUSTRIAL CONSUMERS

	First	
5/8" Meter	2,000 gal.	\$ 6.00 (Minimum)
3/4" Meter	2,400 gal.	6.70 (Minimum)
1" Meter	5,000 gal.	11.25 (Minimum)
1 1/2" Meter	7,500 gal.	14.50 (Minimum)
2" Meter	10,000 gal.	17.75 (Minimum)
Next	3,000 gal.	1.75 per M gallons
Next	5,000 gal.	1.30 per M gallons
Next	15,000 gal.	1.10 per M gallons
Next	25,000 gal.	.80 per M gallons
Next	50,000 gal.	.70 per M gallons
Next	100,000 gal.	.60 per M gallons
Next	200,000 gal.	.50 per M gallons

Surface water sources - Tug Fork of Big Sandy River

Average discharge - Tug Fork near Kermit, West Virginia, 1,307 cfs
(36-years, USGS)

Expected ground water yield - 5 to 50 GPM over entire county

Sewerage

Inez does not have a municipal sewerage system.

LOCAL GOVERNMENT

City Inez is an unincorporated community.

County

Structure - County Judge - 4-year term; 7 magistrates - 4-year terms
Budget 1971-72 - General Fund \$72,778; Road Fund \$54,325

Assessed Value of Property - 1971

<u>Classes of Property</u> *	<u>Martin County</u>
Real Estate	\$19,649,120
Tangibles	6,376,850
Public Service	9,331,383 (1970)

Local General Property Tax Rates Per \$100 of Assessed Valuation, 1971^{12/}

<u>Taxing Unit</u> **	<u>Martin County</u>
State	\$.015
County	.302
School	.460
Total	\$.777

Planning and Zoning

Agency - Martin County Planning and Zoning Commission
Plans completed - Zoning Ordinance, Public Improvements Program
Capital Improvements Budget
Plans in process - Comprehensive Plan

*Property assessed at 100% of fair value.

**Manufacturing machinery, raw materials inventories and goods in process inventories are not subject to local tax. State rate is only \$0.15 per \$100.

SafetyPoliceMartin County

Total staff	2
Radio-patrol cars	1

Fire

American Insurance Association

Fire Rating	9
Volunteers	20
500 gpm pumper	1

SanitationInezMartin County

Type service	private	private
Cost:		
residential	\$4.00	
business	per month	contract
Collection frequency:	contract	contract
residential	twice weekly	when desired
business	when desired	when desired
Trash pickup	when desired	when desired
Disposal method	dump	dump

HEALTH

Hospitals

<u>General Hospitals</u>	<u>Location</u>	<u>Beds</u>
Paintsville Hospital	Paintsville (24 miles)	95
Riverview and Louisa General Hospital	Louisa (25 miles)	82

Paintsville Hospital facilities - 2 operating rooms. X-ray, nursery, premature nursery, emergency room, laboratory, nursing school in cooperation with Mayo Area Vocational School

Medical staff - 8 doctors, 7 registered nurses, 25 licensed practical nurses, and a consulting staff including: 2 dentists, 2 radiologists, 1 pathologist, and 1 cardiologist

Riverview and Louisa General Hospital facilities - X-ray, 2 operating rooms, 2 laboratories, 2 emergency rooms, 2 pharmacies

Medical staff - 12 doctors, 13 registered nurses, 18 graduate licensed practical nurses

Other - Inez has a clinic with a staff of 2 doctors and 1 dentist. It is equipped to handle most emergencies.

Public Health

Facility - Martin County Health Department

Staff - one clerk, two nurses, sanitarian, X-ray technician, health officer, administrative assistant

Budget 1971-72 - \$45,405

OTHER LOCAL FACILITIES

Communications

Telephone - South Central Bell Telephone Company
Services - standard

Telegraph - Western Union
Services - at Paintsville

Postal - U. S. Post Office
Class - second
Mail received - once daily
Mail dispatched - once daily

Newspapers - The Martin County Mercury
Every two weeks and circulation - 2,500
Other papers received from Huntington and Williamson, West Virginia;
and Louisville, Kentucky

Radio -
Stations received from Louisa, Prestonsburg and Paintsville, Kentucky;
and Williamson, West Virginia

Television - two cable companies
Reception from Huntington and Charleston, West Virginia
Kentucky Educational Television - Channel 22, Pikeville transmitter

Library Services

Public Library - Martin County Public Library
Size collection - 12,000 volumes
Services - Bookmobile

Religious Institutions

Number of churches - 7
Denominations - Baptist, Methodist, Nazarene, Presbyterian

Financial Institutions

<u>Bank</u>	<u>Statement as of December 31, 1971</u>	
	<u>Assets</u>	<u>Deposits</u>
The Inez Deposit Bank	\$8,482,714	\$7,692,250

Hotels and Motels

Number - 1
Units - 20

Clubs and Organizations

Business and Civic - Lions Club, Martin County Development Association, Jaycees

Fraternal - Masonic Lodge, Odd Fellows Lodge

Women's - Eastern Star, Rebekah

Youth - 4-H, Girl Scouts, Boy Scouts, Cub Scouts

RECREATION

Local

Public Recreation Facilities

Supervised program - Little League, Pony League

Playgrounds - school facilities

Baseball diamonds - 2

Tourist attractions

Inez Foundry, Martin County Lake, Milow Lake

Area (Within 40 miles)

Jenny Wiley State Park

Cabwaylingo State Forest - West Virginia

AGRICULTURE - NATURAL RESOURCES - CLIMATE

Agriculture 13/

	<u>Martin County</u>	<u>Labor Market Area</u>
Total land area (acres)	147,840	1,347,200
Percent of area in farm land	17.7	25.3
Number of farms	270	3,463
Average size of farms (acres)	97.1	98.5
1964 value of all farm products	\$ 88,498	\$2,506,124
Value per farm	328	724
Total crop sales	39,108	1,125,996
Total livestock & livestock products	49,390	1,376,117
1969 agricultural production included:		
Corn (bu.)	20,000	260,000
Cattle and calves (number)	1,100	19,800
Hogs and pigs (number)	300	4,500

Natural Resources

Principal mineral resources	Coal, sand and gravel petroleum and natural gas
Other mineral resources	Low sulfur coal is available within the county
Acres of commercial forest land	128,400
Most abundant tree species	Red oak, white oak, hickory, yellow poplar, beech, soft maple and basswood

Climate 14/

	<u>Martin County</u>
Temperature	
Annual mean (30-year record)	+ 56.8 degrees
Average annual 1971	+ 57.0 degrees
Record highest, July, 1970 (10-year record)	+ 95.0 degrees
Record lowest, January, 1966 (10-year record)	- 15.0 degrees
Seasonal heating degree days (30-year record)	4,143
Precipitation	
Mean annual total (30-year record)	41.06 inches
Mean annual snow and sleet (34-year record)	16.70 inches
Total precipitation 1971	43.24 inches
Mean number days precipitation, (.01 inch or more) (26-year record)	133
Average number days thunderstorms (28-year record)	46
Prevailing winds (9-year record)	West-southwest

HISTORY

Martin County is situated in the Eastern Coal Field Region of Kentucky. Its 231 square miles are exceedingly uneven with jagged mountains, inaccessible pinnacles covered with pines, steep cliffs, and river and creek valleys filled with numerous caves and rich bottom lands. It was taken from Pike, Floyd, Johnson and Lawrence Counties. West Virginia borders Martin County on the east where the Tug Fork of the Big Sandy River forms the state boundary line.

Martin County, the one-hundred and sixteenth county formed in the state, dates from 1870. The first settler in Martin County was James Ward, a veteran of the Revolutionary War and a companion of Daniel Boone. Ward chose this area for a campsite and home because of its proximity to several salt licks. He did not have a right of ownership, however, and in a few years, the state of Virginia granted part of Martin County to Ben Say. This grant was among those which Kentucky honored when she became a state in 1792. In 1815 George R. C. Floyd and Associates acquired the area and began to show some progress toward inhabiting this area. Martin County was named for Colonel John P. Martin who served two terms in the state legislature, and one in the Congress of the United States. He was unsuccessful in a bid for the lieutenant governorship in 1848.

Inez, the county seat of Martin County, was founded in 1876. Warfield was the first county seat and is located on the eastern edge of the county. The town of Eden, whose name was changed to Inez, is located in the center of the county. When a post office was established there, the town had to change its name since there was already a post office in the state named Eden. The postmaster at Louisa then named the post office for his daughter, Inez Frank.

The population of Martin County was 3,057 in 1880 and increased to a high of 11,677 in 1950. Over the next twenty years the population decreased, and was 9,377 in 1970.

In the past, agriculture has been a chief source of the county's economy. However, in 1970 only 100 of the county's 1,700 employed were engaged in agriculture. During this same year government employment for the county was 800 while mining and quarrying provided 358. Coal, crude petroleum, and natural gas resources presently serve as the most promising basis for future industrial development for this area.

The lumber industry has also been an important source of revenue in the county. Wood processing rivals agriculture and coal in the county's economy.

SOURCES OF INFORMATION

- 1/ U. S. Department of Commerce, Bureau of the Census, Census of Population, 1950, 1960, 1970.
- 2/ Kentucky Department of Economic Security, Division of Research and Statistics.
- 3/ Kentucky Department of Economic Security, Number of Workers in Manufacturing Industries Covered by Kentucky Unemployment Insurance Law Classified by Industry and County, September 1971, 1961.
- 4/ Kentucky Department of Commerce, 1972 Kentucky Directory of Manufacturers.
- 5/ Kentucky Department of Economic Security, Division of Employment Services, Prestonsburg Office.
- 6/ Kentucky Department of Economic Security, Kentucky Labor Supply Estimates by County, January 1971.
- 7/ Kentucky Department of Commerce, Future Labor Supply by 1978.
- 8/ University of Kentucky, Office of Development Services and Business Research, Total Personal Income for Kentucky.
- 9/ University of Kentucky, Office of Development Services and Business Research, Per Capita Income in Kentucky.
- 10/ The Chesapeake and Ohio Railway Company, Baltimore, Maryland.
- 11/ Point Express, Inc., Charleston, West Virginia.
- 12/ Kentucky Department of Revenue, Kentucky Property Tax Rates, 1971.
- 13/ U. S. Department of Commerce, Bureau of the Census, Census of Agriculture, 1964. U. S. Department of Agriculture and Kentucky Department of Agriculture, Kentucky Agricultural Statistics, 1970.
- 14/ U. S. Department of Commerce, Environmental Science Services Administration, Climatological Data, 1971.

All other information was obtained from governmental offices, local businesses and organizations.