

1969

# Industrial Resources: Mercer County - Harrodsburg

Kentucky Library Research Collections  
Western Kentucky University, [spcol@wku.edu](mailto:spcol@wku.edu)

Follow this and additional works at: [https://digitalcommons.wku.edu/mercer\\_cty](https://digitalcommons.wku.edu/mercer_cty)



Part of the [Business Administration, Management, and Operations Commons](#), [Growth and Development Commons](#), and the [Infrastructure Commons](#)

---

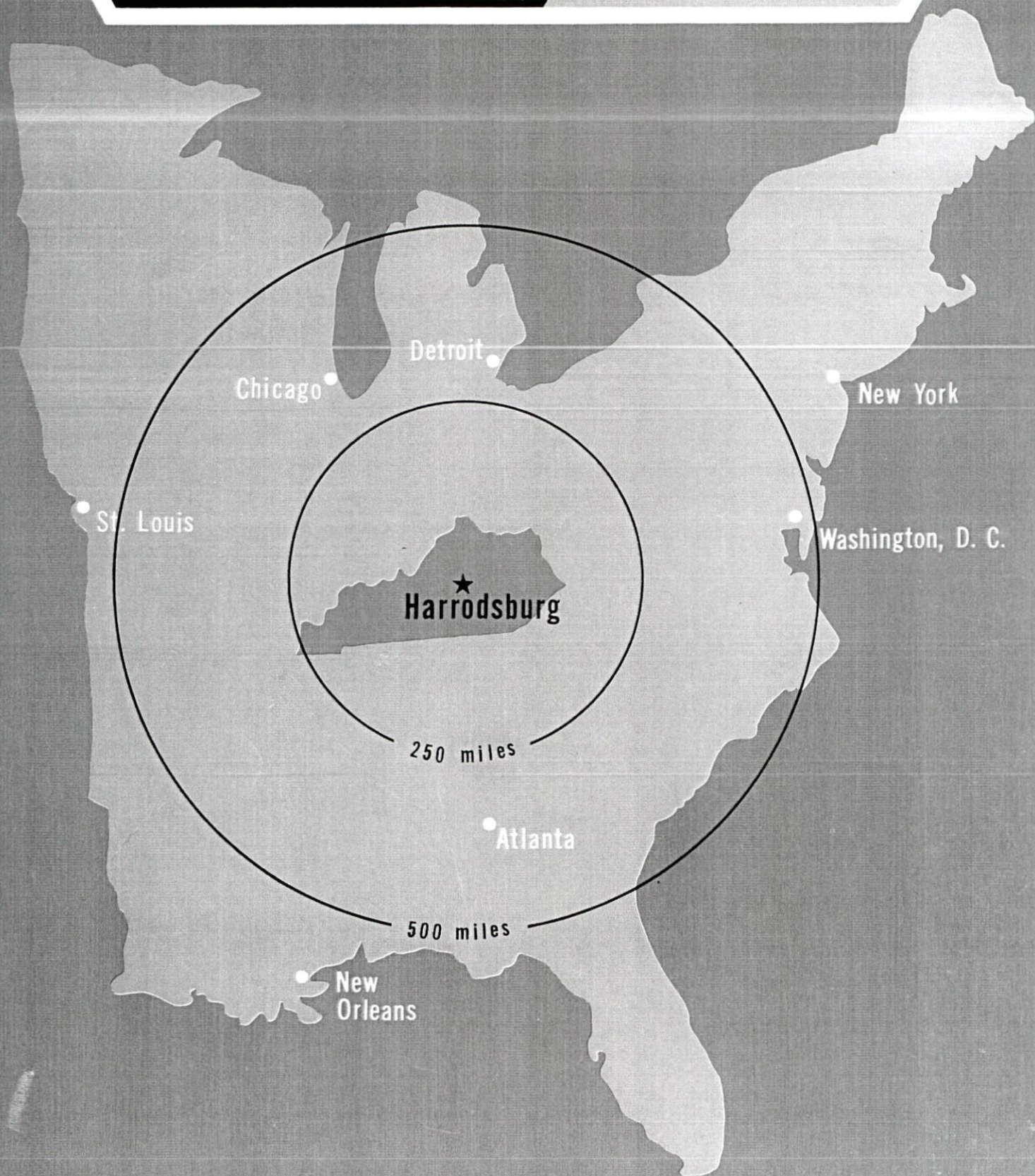
## Recommended Citation

Kentucky Library Research Collections, "Industrial Resources: Mercer County - Harrodsburg" (1969). *Mercer County*. Paper 18.  
[https://digitalcommons.wku.edu/mercer\\_cty/18](https://digitalcommons.wku.edu/mercer_cty/18)

This Report is brought to you for free and open access by TopSCHOLAR®. It has been accepted for inclusion in Mercer County by an authorized administrator of TopSCHOLAR®. For more information, please contact [topscholar@wku.edu](mailto:topscholar@wku.edu).

# **INDUSTRIAL RESOURCES**

**HARRODSBURG  
KENTUCKY**



HARRODSBURG INDUSTRIAL SITE

## HARRODSBURG INDUSTRIAL SITE

For more detailed information concerning the industrial site, contact Gene C. Royalty, Mercer Industrial Development Corporation, Harrodsburg, Kentucky, or the Kentucky Department of Commerce, Frankfort, Kentucky.

SITE #1: ACREAGE AND TOPOGRAPHY: 110 acres, level to  
gently rolling

LOCATION: Adjacent to northern city boundary

ZONING: Industrial

HIGHWAY ACCESS: U. S. 127 - access road to site  
from Moberly Road proposed

RAILROADS: Spur to site proposed

WATER: Harrodsburg Municipal Water Works

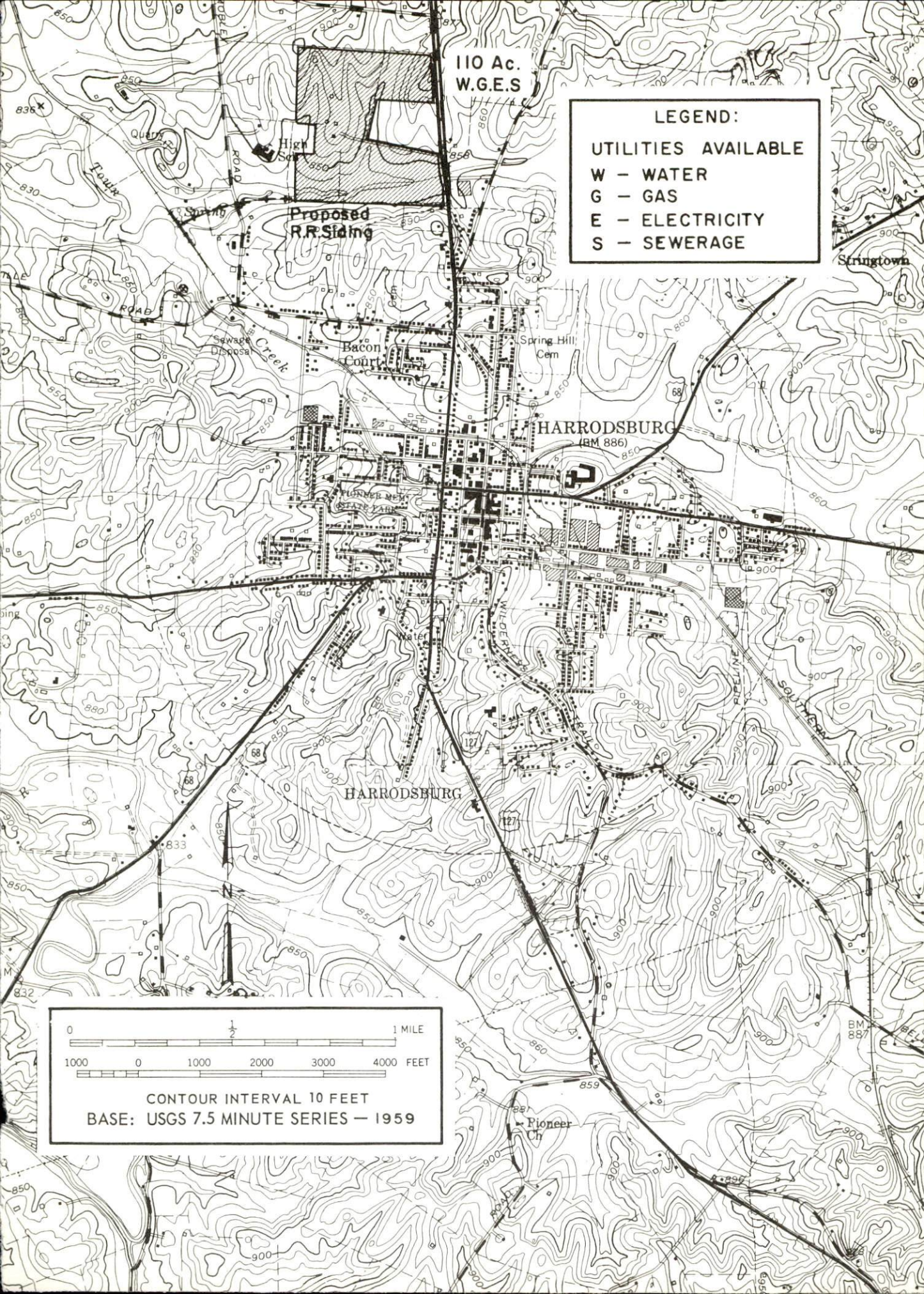
GAS: Western Kentucky Gas Company

ELECTRICITY: Kentucky Utilities Company

SEWERAGE: Municipal sewerage system

OWNERSHIP: Mercer Industrial Development  
Corporation





110 Ac.  
W.G.E.S

LEGEND:

UTILITIES AVAILABLE

W - WATER

G - GAS

E - ELECTRICITY

S - SEWERAGE

Proposed  
R.R. Siding

Bacon  
Court

Spring Hill  
Cem

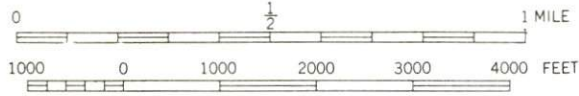
HARRODSBURG  
(BM 886)

HARRODSBURG

Stringtown

BM  
887

Pioneer  
Ch



CONTOUR INTERVAL 10 FEET

BASE: USGS 7.5 MINUTE SERIES - 1959



INDUSTRIAL RESOURCES  
HARRODSBURG, KENTUCKY

PREPARED BY  
THE KENTUCKY DEPARTMENT OF COMMERCE  
IN COOPERATION WITH  
THE HARRODSBURG CHAMBER OF COMMERCE

1969

## TABLE OF CONTENTS

<u>Chapter</u>	<u>Page</u>
INDUSTRIAL SITES. . . . .	i
HARRODSBURG, KENTUCKY, A PROFILE . . . . .	1
THE LABOR MARKET . . . . .	3
Population. . . . .	3
Employment Characteristics. . . . .	3
Labor Organizations . . . . .	7
Wage Levels. . . . .	7
Labor Supply. . . . .	8
Income . . . . .	9
EDUCATION. . . . .	10
Elementary and High Schools . . . . .	10
Vocational Schools . . . . .	12
Colleges. . . . .	12
TRANSPORTATION. . . . .	14
Rail. . . . .	14
Highways . . . . .	14
Truck Service . . . . .	14
Air . . . . .	15
Other Transportation Services. . . . .	15
POWER AND FUEL . . . . .	16
Electricity . . . . .	16
Natural Gas . . . . .	16
Coal . . . . .	17
Fuel Oil. . . . .	17
WATER AND SEWERAGE . . . . .	18
Water. . . . .	18
Sewerage . . . . .	18

<u>Chapter</u>	<u>Page</u>
AGRICULTURE - NATURAL RESOURCES - CLIMATE. . . . .	19
Agriculture . . . . .	19
Mineral Resources. . . . .	19
Water Resources . . . . .	19
Forests . . . . .	20
Climate . . . . .	20
LOCAL GOVERNMENT . . . . .	21
Structure . . . . .	21
Finance . . . . .	21
Taxes . . . . .	22
Planning and Zoning . . . . .	22
Safety . . . . .	23
Fire . . . . .	23
Police . . . . .	23
Sanitation . . . . .	23
HEALTH . . . . .	24
Hospitals . . . . .	24
Public Health . . . . .	24
OTHER LOCAL FACILITIES . . . . .	25
Housing . . . . .	25
Communication . . . . .	25
Telephone . . . . .	25
Telegraph . . . . .	25
Postal . . . . .	25
Newspapers. . . . .	25
Radio. . . . .	25
Television . . . . .	25
Libraries. . . . .	26
Churches . . . . .	26
Financial Institutions . . . . .	26
Hotels and Motels . . . . .	26
Clubs and Organizations . . . . .	26
Recreation . . . . .	27
Community Improvements . . . . .	29
HISTORY . . . . .	30



## HARRODSBURG, KENTUCKY, A PROFILE

### Location

Harrodsburg, a prosperous and historic town, is located in central Kentucky. It has long been remembered as the first permanent pioneer settlement west of the Alleghenies, but in recent years as a rapidly developing manufacturing center. It has easy accessibility to metropolitan areas, being located only 33 miles south of Lexington, 71 miles southeast of Louisville, and 110 miles south of Cincinnati. The 1960 population of 6,061 was an increase of 15.2 percent over the 1950 population.

### The Economy

The economy of Mercer County is well balanced and prosperous. Agriculture, manufacturing, trade and services, and government activities form the basis of a diversified economy. A recent decline in agricultural employment has been offset by the increasing number of manufacturing jobs provided. Between 1960 and 1968, manufacturing employment in the county increased 53 percent. With Kentucky's capitol in Frankfort only 30 miles away, state government has become a major employer for local residents. Favorable wage rates, a substantial labor supply and industrial sites proximity to major industrial centers, and excellent access to consumer markets indicate future economic growth.

Harrodsburg is near the middle of a seven-county area with 33,620 jobs. Of this total, Boyle County provides 8,750 jobs, Mercer County 5,200, and Woodford County 5,265. There are 8,450 manufacturing jobs in the seven counties and since 1960 manufacturing employment has increased by 51 percent. Other economic activities are agriculture 8,860; trade and services 5,825; and government 3,480.

### Labor Supply

There is a current labor supply of 2,950 men and 2,650 women in the Harrodsburg labor market area. During the next five years, this supply will increase as 5,280 boys and 5,180 girls in the area become 18 years of age.

### Industrial Sites and Services

One industrial site of 110 acres is available in Harrodsburg. Level topography and location add to the attractiveness of this site.

Excellent transportation facilities add to Harrodsburg's potential for continued industrial growth.

... Rail service is provided by the Southern Railway System.

... Blue Grass Parkway is only 16 miles north via a 4-lane divided highway.

... Trucking service is provided by eight trucking firms.

... Commercial air service is provided at Blue Grass Field, 30 minutes driving time from Harrodsburg.

Adequate supplies of power and fuels are available. Electric power is distributed by Kentucky Utilities Company, Fox Creek RECC, and Inter-County RECC. Natural gas is distributed by the Western Kentucky Gas Company.

#### Recreation

A wide variety of recreation is available in Harrodsburg and surrounding areas. Local facilities include three outdoor recreation areas - Pioneer Memorial State Park, Young's Park, and the Mercer County Game and Fish Farm. Other recreational facilities include: two golf courses, two swimming pools and three tennis courts.

Herrington Lake, located 8 miles from Harrodsburg, has facilities for fishing, hiking, golfing, swimming, and camping. Two historic memorials, Constitution Square and Isaac Shelby Memorial, are located in Danville, 9 miles distant, and Perryville Battlefield State Park is in Perryville, 10 miles distant.

College sports and activities can be viewed in Lexington and Louisville. Local high school sports are also very popular in the Harrodsburg area.

## THE LABOR MARKET

### Population

Harrodsburg, a small but rapidly growing town, is the county seat of Mercer County. It had a 1960 population of 6,061 which represents a 15.2 percent increase over the 1950 population. Mercer County had a 1968 estimated population of 15,700, an increase of 7.5 percent since 1960.

TABLE 1

POPULATION TREND - HARRODSBURG AND MERCER COUNTY,  
KENTUCKY <sup>1/</sup>

Year	Harrodsburg		Mercer County	
	Population	% Change	Population	% Change
1900	2,876		14,426	
1950	5,262	45.3	14,683	1.5
1960	6,061	15.2	14,596	- .3
1968 <sup>2/</sup>	NA		15,700	7.5

### Employment Characteristics

Total employment in Mercer County during 1967 averaged 5,200 with the major components being agriculture (1,430), manufacturing (1,285), trade and services (955), and government (595). Manufacturing employment has increased 53 percent since 1960. In June, 1968, there were 1,385 persons employed in manufacturing. The apparel industry accounts for 719 jobs in the county.

Three new industries have located in Mercer County since 1960, representing capital investments of nearly \$4 million. Expansions of three existing plants during the same period exceeded \$3 million in added investment.



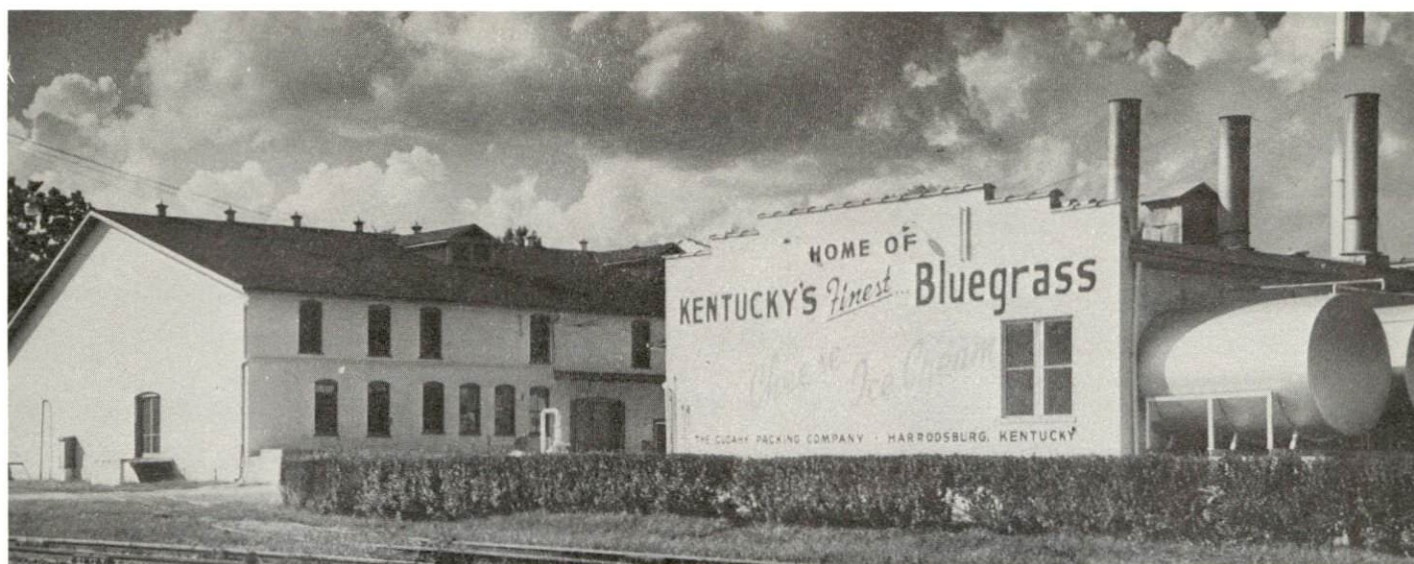
TABLE 2

HARRODSBURG AREA MANUFACTURING FIRMS,  
THEIR PRODUCTS AND EMPLOYMENT

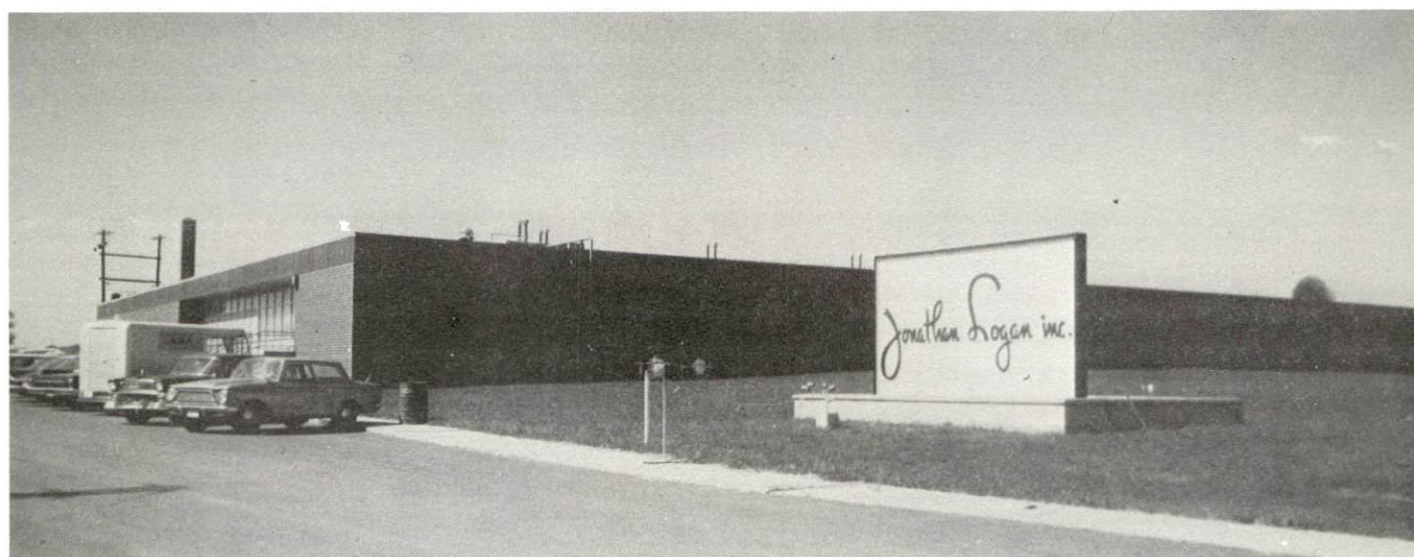
Firm	Product	Employment		
		Total	Male	Female
<u>Harrodsburg</u>				
Barnett Company	Feed	3	2	1
Corning Glass Works	Optical, ophthalmic glass	364	243	121
Cricketeer, Inc.	Men's coats	475	18	457
Cudahy Co.	Cheese, ice cream	79	70	9
Guthrie Farm Service	Feed	5	5	0
Hall-Mack Division of Randall Corp.	Bathroom accessories	175	100	75
Harrodsburg Herald	Newspaper, letterpress printing	17	8	9
Harrodsburg Ready Mix Concrete Co.	Ready mixed concrete	10	9	1
Harrodsburg Souvenir Co.	Wood souvenirs	3	3	0
Lee Dog Food Co.	Dog food processing	7		
Sandusky Mill	Corn meal, feed	8	7	1
<u>Burgin</u>				
Burgin Block Works	Concrete blocks	4	4	0
Kentucky Molded Boats, Inc.	Fiberglas boats	6	6	0
Kim Products, Inc.	Gauges, regulators, screw machine parts	32	24	8
Mercer Dress Corp.	Women's dresses	250	50	200

The seven-county Harrodsburg labor market area includes: Mercer, Anderson, Boyle, Garrard, Jessamine, Washington, and Woodford Counties. In June, 1968, 8,447 were employed in manufacturing in this area. Employment in clothing and textiles, with 3,031 employed, is concentrated mostly in Boyle, Mercer, and Garrard Counties. Employment in food and beverages, another important industry of the area, is concentrated mostly in Woodford and Anderson Counties. Growth in manufacturing has resulted in 2,863 new jobs since 1960.





CUDAHY PACKING COMPANY

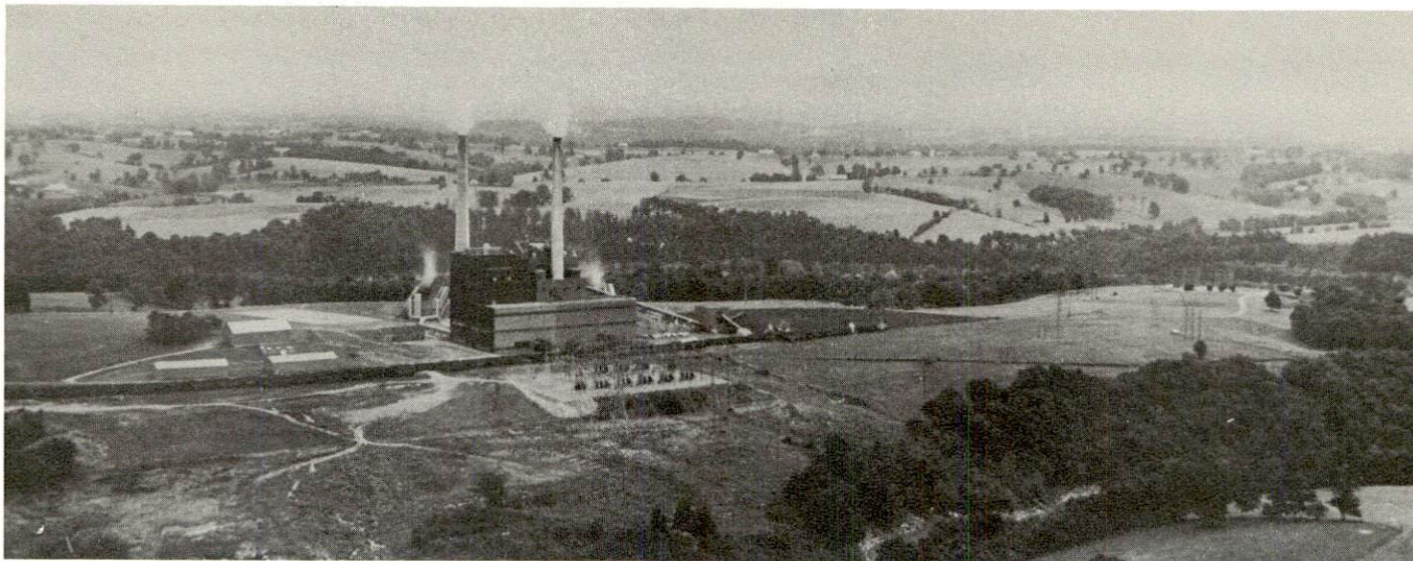


MERCER DRESS CORP.  
(Jonathan Logan, Inc.)



KIM PRODUCTS, INC.  
BURGIN, KENTUCKY

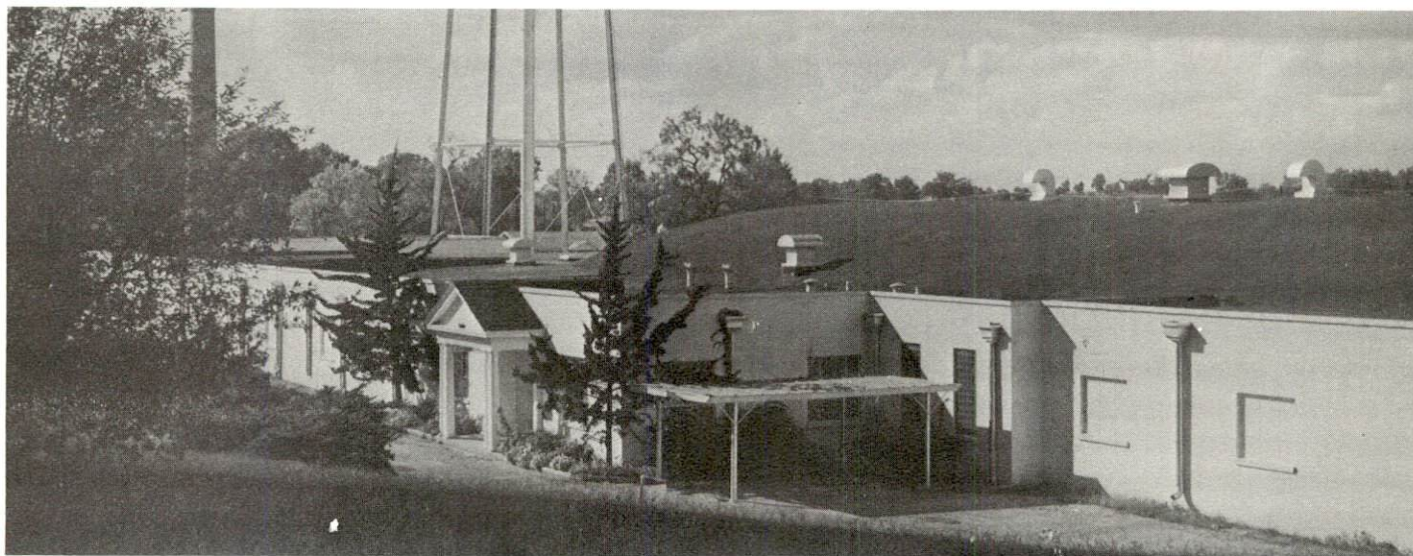




E. W. BROWN GENERATING PLANT



CORNING GLASS WORKS



CRICKETEER, INC.



TABLE 3

MANUFACTURING EMPLOYMENT, HARRODSBURG LABOR MARKET  
AREA, JUNE, 1968 <sup>3/</sup>

Industry	Employment
TOTAL	8,447
Food and beverages	1,459
Apparel	3,031
Printing, publishing and paper	984
Stone, clay and glass	776
Other	2,197

Labor Organizations

The following labor organizations are represented in Harrodsburg.

<u>Name of Union</u>	<u>Name of Company</u>
Amalgamated Meat Cutters and Butcher Workmen of North America - Local 227	Cudahy Company
Amalgamated Clothing Workers of America - Local 120	Cricketeer, Inc.
American Flint Glass Workers Union of North America - Local 1016	Corning Glass Works
International Ladies' Garment Workers Union	Mercer Dress Corp. (Mercer County)

Wage Levels

The average weekly wage in all industries in Mercer County in 1967 was \$82.53. The average weekly wage in manufacturing was \$91.11. Comparable figures for Kentucky were \$104.50 for all industries and \$115.08 for manufacturing. All of the counties in the Harrodsburg labor market area, except Woodford which exceeds the state average in all industries, were below the state averages. These facts could mean that workers can be recruited at or near the minimum wage level.

The following wage levels are examples of the labor cost for certain skills in the area: <sup>4/</sup>

<u>Production Employees</u>	<u>Wages Per Hour</u>		
	<u>Starting</u>	<u>Maximum</u>	<u>Prevailing</u>
Assembler	\$1.60	\$2.25	\$1.70
Drill Press Operator	1.70	2.35	1.80
Grinder, Machine	1.80	2.45	1.90
Inspector	1.60	2.50	1.80
Machinist, Set Up	1.80	2.60	1.90
Polisher & Buffer	1.80	2.60	1.90
Production Laborer	1.60	1.95	1.70
Punch Press Operator	1.70	2.35	1.80
Sprayer or Painter	1.70	2.35	1.80

#### Service Employees

Carpenter	\$2.50	\$4.50	\$2.75
Crane Operator	2.50	4.50	2.75
Electrician	2.75	4.75	2.85
Janitor	1.60	1.95	1.70
Laborer	1.60	3.00	1.70
Mechanic, Maintenance	1.80	2.50	1.90
Shipping Clerk	1.70	2.10	1.80
Truck Driver	1.75	2.25	2.00

#### Office Employees

Bookkeeper or Accounting Clerk	\$2.00	\$2.50	\$2.00
Chief Clerk	1.75	2.25	1.85
Draftsman	3.00	3.50	3.25
File Clerk	1.60	1.95	1.70
Receptionist	1.60	1.95	1.80
Secretary	1.75	2.25	1.85
Stenographer	1.75	2.25	1.85
Tabulating Machine Operator	1.65	2.05	1.70
Telephone Operator	1.60	2.50	1.70
Typist	1.60	1.95	1.70

#### Labor Supply

The current estimated labor supply of the Harrodsburg labor market area includes 2,950 men and 2,650 women. The total figure of 5,600 is composed of the unemployed, the underemployed, and persons who would enter the labor force if jobs become available. Within the next five years 5,280 boys and 5,180 girls will become 18 years of age, thus contributing considerably to the area labor supply.



Workers could be expected to commute from Anderson, Boyle, Garrard, Jessamine, and Washington Counties should job opportunities be presented.

TABLE 4  
CURRENT AND FUTURE LABOR SUPPLY - HARRODSBURG LABOR  
MARKET AREA <sup>5/</sup>

County	Current Labor Supply July, 1968			Future Labor Supply by 1974 (Becoming 18 Years of Age)		
	Total	Male	Female	Total	Male	Female
Labor Market						
Area	5,600	2,950	2,650	10,073	5,287	5,186
Mercer	600	300	300	1,348	696	652
Anderson	600	300	300	817	417	430
Boyle	700	400	300	1,914	947	967
Garrard	800	500	300	911	479	432
Jessamine	1,000	500	500	1,403	715	688
Washington	1,600	800	800	2,815	1,391	1,424
Woodford	300	150	150	1,235	642	593

#### Income

The total personal income in Mercer County in 1968 was estimated at \$37,335,000. Per capita income was \$2,489 for a gain of \$969 during the previous nine years. <sup>6/</sup>

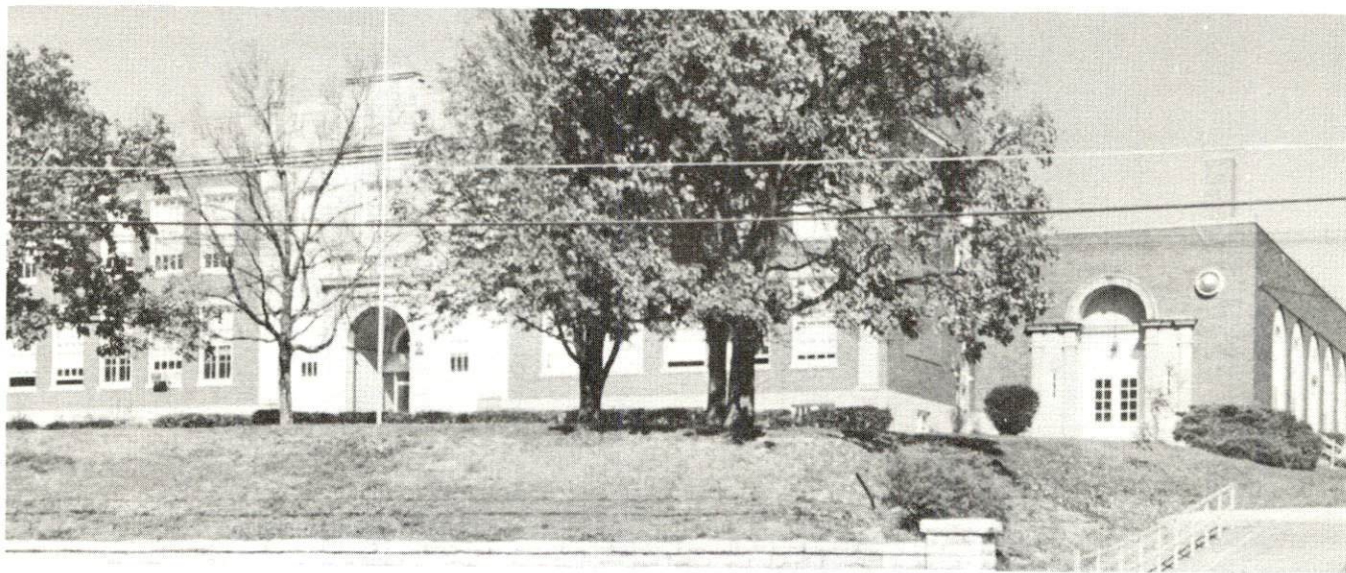
## EDUCATION

The educational system within the Harrodsburg labor market area has the facilities to produce an effective labor force for future industrial growth.

### Elementary and High Schools

The Harrodsburg School District is composed of one 63-classroom building combining both elementary and high school. Special personnel includes: one superintendent, one director of pupil personnel, two principals, one assistant principal, one supervisor, two physical education teachers, one home economics teacher, one industrial arts teacher, three music teachers, one art teacher, two remedial reading teachers, and three special education teachers. The budget for the 1968-69 school year is \$650,000.

The city school district is now engaged in a large-scale building program. A new music building and industrial arts building are presently under construction. A new athletic field was just recently completed. A new elementary school will be completed by September, 1969. The total investment in these new facilities is \$1,250,000.



HARRODSBURG HIGH SCHOOL

The school system in Mercer County includes five elementary schools and one high school. Specialized personnel and teachers include the following: one superintendent of schools, one supervisor, one director of pupil personnel, six principals, three librarians, one music teacher, one art teacher, one federal program coordinator, one guidance counselor, and three elementary librarians. The 1968-69 school year budget is \$615,800.



A new Mercer County consolidated elementary and junior high school is presently under construction. The completion date for the new school is April 1, 1969.



MERCER COUNTY HIGH SCHOOL

Harrodsburg is also served by a parochial elementary school with an enrollment of 94 students.

TABLE 5

SCHOOLS, ENROLLMENT, NUMBER OF TEACHERS, STUDENT -  
TEACHER RATIO IN HARRODSBURG AND MERCER COUNTY 1968-69 7/

Schools	Enrollment	No. of Teachers	Student-Teacher Ratio
Mercer County Elementary	1,108	48	23-1
Mercer County High	499	24	20-1
Burgin Independent Elementary	232	11	21-1
Burgin Independent High	193	8	24-1
Harrodsburg Independent Elementary	987	42	23-1
Harrodsburg Independent High	393	19	20-1
St. Andrew Elementary (Parochial)	94	4	23-1

### Vocational Schools

Harrodsburg is presently served by the Central Kentucky Area Vocational School located in Lexington, 33 miles distant. Course offerings include Appliance Repair, Auto Body Repair, Auto Mechanics, Commercial Foods, Data Processing, Distributive Education, Drafting, Electronics Communications, Health Occupations, Highway Technology, Industrial Electricity, Machine Shop, Practical Nursing, Radio and TV Repair, Sheet Metal, Tool and Die Design, and Welding.

Construction of the new \$450,000 Harrodsburg Extension Center will soon be underway. Construction is expected to be completed by Spring 1970. Courses to be offered include Auto Mechanics, Carpentry, Drafting, Industrial Electricity, and Business and Office Education.

### Colleges

Advanced educational opportunities in the Harrodsburg area are excellent.

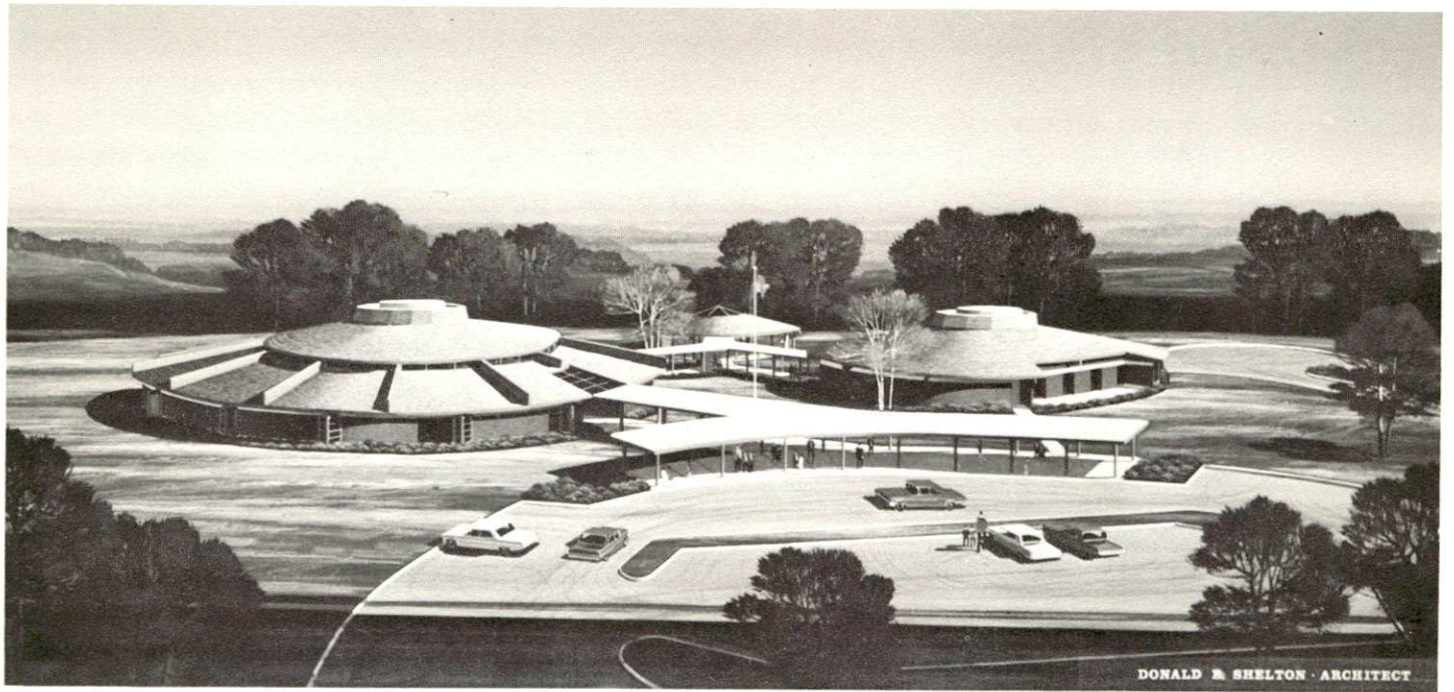
Centre College, located in Danville, Kentucky, a coeducational liberal arts college, is located only 9 miles from Harrodsburg. The campus covers approximately 50 acres, with excellent athletic fields, residences, and classroom buildings. Centre offers the single degree of Bachelor of Arts. Students may choose a field of study from among 21 disciplines.

The main campus of the University of Kentucky is located in Lexington. The University, comprising ten colleges, a school of architecture, a graduate school, and a Division of University Extension, offers a wide and varied educational program. The University serves the area as a cultural, educational, research and medical center.

Other institutions of higher learning in the Harrodsburg area include:

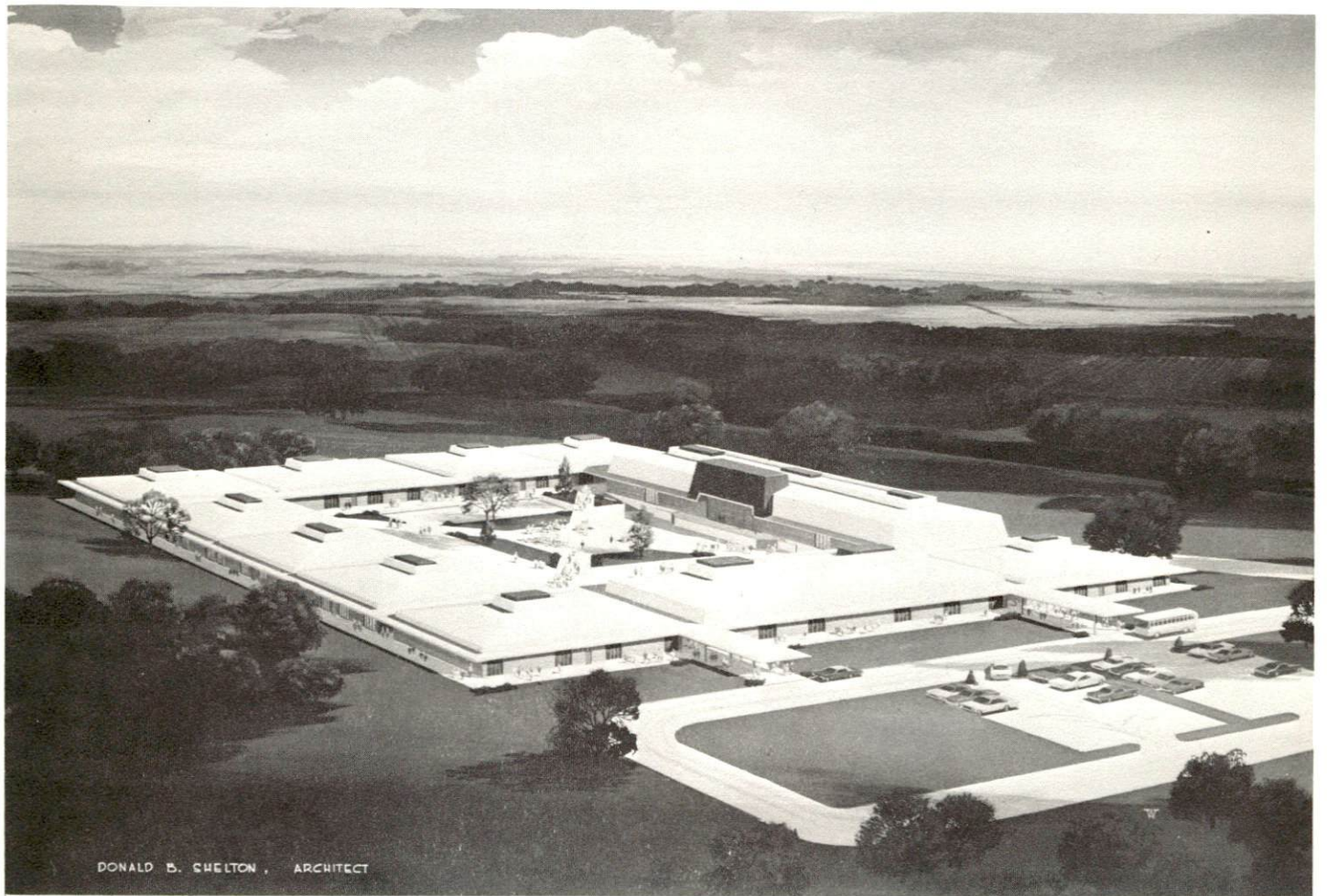
Asbury College, Wilmore, Kentucky, 25 miles  
Transylvania College, Lexington, Kentucky, 33 miles  
Berea College, Berea, Kentucky, 39 miles  
Eastern Kentucky University, Richmond, Kentucky, 48 miles  
Southeastern Christian College, Winchester, Kentucky, 49 miles  
University of Louisville, Louisville, Kentucky, 71 miles





DONALD B. SHELTON - ARCHITECT

HARRODSBURG ELEMENTARY SCHOOL



DONALD B. SHELTON , ARCHITECT

MERCER COUNTY ELEMENTARY SCHOOL

## TRANSPORTATION

### Rail

Harrodsburg, served by the Southern Railway System, is located on a main line running from Chattanooga, Tennessee, to St. Louis, Missouri. It connects with the Southern Railway System (CNO & TP) 2 miles north of Danville, Kentucky. There is one local freight and twelve through freights daily. Switching service is provided six days a week and sidings for 46 cars are available. Outbound carloads, containing glass, tobacco, and cheese, average twenty per month. The average number of inbound carloads is 50, consisting mainly of lumber, fertilizer, roofing, coal, and raw materials for manufacturing. Passenger service is available in Danville, only 9 miles distant.

REA Express provides a pickup and delivery service in Harrodsburg and Mercer County.

TABLE 6

RAILWAY TRANSIT TIME FROM HARRODSBURG, KENTUCKY, TO: 8/

No. of Days		No. of Days	
City	CL	City	CL
Atlanta, Ga.	2	Louisville, Ky.	1
Birmingham, Ala.	2	Los Angeles, Calif.	8
Chicago, Ill.	3	Nashville, Tenn.	3
Cincinnati, Ohio	1	New Orleans, La.	3
Cleveland, Ohio	3	New York, N. Y.	5
Detroit, Mich.	3	Pittsburgh, Pa.	4
Knoxville, Tenn.	2	St. Louis, Mo.	3

### Highways

Harrodsburg and Mercer County are served by U.S. Routes 68 and 127 and Kentucky Highways 152, 390, and 1160. An interchange of the Blue Grass Parkway is located just 16 miles north of Harrodsburg. The Blue Grass Parkway connects with the nationwide interstate highway system at Elizabethtown and Lexington, Kentucky.

Truck Service: The following trucking firms serve Harrodsburg:



CompanyHome Office

Davenport's Transfer  
 Lawrenceburg Transfer Co.  
 McDuffee Motor Freight, Inc.  
 McLean Trucking Co.  
 Best Way Express, Inc.  
 Cooper-Jarrett, Inc.  
 O. K. Trucking Company  
 Smith's Transfer Corporation  
 of Virginia

Harrodsburg, Kentucky  
 Lawrenceburg, Kentucky  
 Lebanon, Kentucky  
 Winston-Salem, North Carolina  
 Seattle, Washington  
 Lexington, Kentucky  
 Louisville, Kentucky  
 Staunton, Virginia

TABLE 7

HIGHWAY MILES AND TRUCK TRANSIT TIME FROM HARRODSBURG,  
 KENTUCKY, TO SELECTED MARKET CENTERS <sup>9/</sup>

City	Highway Miles	Delivery Time (Days)		City	Highway Miles	Delivery Time (Days)	
		LTL	TL			LTL	TL
Atlanta, Ga.	343	3	2	Louisville, Ky.	71	1	1
Birmingham, Ala.	389	3	2	Los Angeles, Calif.	2,192	6	5
Chicago, Ill.	368	2	2	Nashville, Tenn.	197	1	1
Cincinnati, Ohio	110	1	1	New Orleans, La.	820	3	2
Cleveland, Ohio	354	2	2	New York, N. Y.	774	3-4	2-3
Detroit, Mich.	368	3	2	Pittsburgh, Pa.	402	3	2
Knoxville, Tenn.	194	2	2	St. Louis, Mo.	344	2	1

Air

Lexington's Blue Grass Field is located within 30 minutes driving time of Harrodsburg. It is served by Eastern, Delta, Piedmont, and Allegheny Airlines. The Harrodsburg-Mercer County Airport is located 2 miles north of Harrodsburg on U.S. 127. It has a well-lighted 3,000 by 130-foot turf runway. Goodall Field is located south of Danville, 13 miles from Harrodsburg. It has two paved and lighted runways - one 2,400 by 72 feet and the other 3,400 by 75 feet. Several aviation maintenance services and flight instruction are available.

Other Transportation Services

Harrodsburg is provided bus service by the Southern Greyhound Bus Lines and Trailways Bus Line. Southern Greyhound provides six southbound and six northbound buses daily. Trailways serves Harrodsburg with five southbound and three northbound buses daily. Connections can be made at Louisville and Lexington to the north and Knoxville, Tennessee, to the south.

Taxi service is provided by the Fleetline Cab Company. Twenty-four hour service is available.

## POWER AND FUEL

### Electricity

The Kentucky Utilities Company serves approximately 4,500 customers in the Harrodsburg area. The Company has a seasonal generating capacity ranging between 705,000 and 740,000 KW with six generating stations located in eastern, western and central Kentucky. The Company also has interconnections with its neighboring utilities which provide a means of interchanging substantial blocks of power when desired. Rates for industry will be furnished by the Company's Industrial Development Department in Lexington, Kentucky, or the Kentucky Department of Commerce, Frankfort, Kentucky.

Mercer County is served by two rural electric cooperatives, Fox Creek RECC and Inter-County RECC.

Fox Creek Rural Electric Cooperative Corporation receives wholesale power from East Kentucky Rural Electric Cooperative and provides electric power to 1,250 Mercer County customers.

Inter-County Rural Electric Cooperative Corporation also receives its power from East Kentucky RECC, and presently serves 850 customers in Mercer County.

### Natural Gas

The Western Kentucky Gas Company, whose source of supply is the Tennessee Gas Transmission Company, serves 2,900 customers in Harrodsburg and Mercer County. Distribution lines range from 2 to 6 inches. Transmission lines, located 10 miles south of Harrodsburg, are 25 and 26 inches. The BTU content is 1,020 per cubic foot and the specific gravity is .60.

Rates are:

#### General Service Rate:

First	1,000 cu. ft. or less per month	\$1.50
Next	2,000 cu. ft. per month	.0895 per 100 cu. ft.
Next	7,000 cu. ft. per month	.0715 per 100 cu. ft.
Next	40,000 cu. ft. per month	.0655 per 100 cu. ft.
All additional	cu. ft. per month	.0585 per 100 cu. ft.



Rate 3-A:

Gas service under this rate is available only to customers who require and contract for not less than 100,000 cubic feet per day, or 24,000,000 cubic feet per year. Service may be 100 percent interruptible or 100 percent firm, or a combination of the two. The cost shall be:

Interruptible Service

First	2,000,000 cu. ft. per month	\$950.00
Next	2,000,000 cu. ft. per month	44.5¢ per M cu. ft.
Next	2,000,000 cu. ft. per month	42.5¢ per M cu. ft.
All additional	cu. ft. per month	36.5¢ per M cu. ft.

Minimum Charge: \$950 per meter per month.

If additional information is needed, contact the Industrial Development Department, Western Kentucky Gas Company, Owensboro, Kentucky.

Coal 10/

Harrodsburg is served by the Eastern Kentucky Coal Field. Delivery cost for industrial and domestic coal from Somerset to Harrodsburg is 217¢ per 2,000 pounds.

Fuel Oil

Kentucky has three fuel oil refineries located in Catlettsburg, Louisville, and Somerset. Kentucky's fuel supply is supplemented by border state operations. Delivered prices of the various grades may be obtained from the Kentucky Department of Commerce, Frankfort, Kentucky.

## WATER AND SEWERAGE

### Water

Harrodsburg is served by the Harrodsburg Municipal Water Company, whose source of supply is the Kentucky River. Raw water is treated with lime, alum, chlorine, and fluorine. Water is stored in a 750,000-gallon elevated tank, a 150,000-gallon elevated tank, and a 160,000-gallon stand-pipe. Treatment capacity is 1,500,000 gallons per day. The average daily use is 800,000 gallons and the maximum daily water use has been 1,400,000 gallons. The average pumping time required to meet daily water needs is 16 hours. The water distribution lines are from 6 to 16 inches in diameter and the average water pressure is 80 psi. The average distribution temperature of treated water is 60 degrees F.

### Water Rates:

First	250 cu. ft. used per mo. @ \$2.50 (Minimum)
Next	750 cu. ft. used per mo. @ .85 per 100 cu. ft.
Next	3,000 cu. ft. used per mo. @ .65 per 100 cu. ft.
Next	6,000 cu. ft. used per mo. @ .45 per 100 cu. ft.
Next	25,000 cu. ft. used per mo. @ .30 per 100 cu. ft.
Next	25,000 cu. ft. used per mo. @ .28 per 100 cu. ft.
Next	50,000 cu. ft. used per mo. @ .25 per 100 cu. ft.
Over	110,000 cu. ft. used per mo. @ .22 per 100 cu. ft.

### Sewerage

The Harrodsburg Municipal Sewerage System is currently serving 6,600 customers. Sewage receives primary and secondary treatment before being discharged into Town Branch. The system has a design population of 10,058 with a current surplus population capacity of 3,458. The design flow is 1,000,000 gallons daily with a present surplus capacity of 345,000 gallons daily. Sewer lines range from 8 to 15 inches. Separate sanitary and storm sewers are maintained. The current sewerage rates are 50 percent of the water bill.



## AGRICULTURE - NATURAL RESOURCES - CLIMATE

### Agriculture

The approximate total land area of Mercer County is 163,840 acres, with 96.2 percent of the area devoted to farm land. In 1964, there were 1,342 farms in the county with an average size of 117 acres.

Farm income in the county is largely from cattle, hogs, and dairying, supplemented substantially by burley tobacco. The 1964 value of sales of all farm products totaled \$8,074,357, averaging \$6,017 per farm. Crop sales totaled \$3,916,669; livestock and livestock products totaled \$4,157,688.

In 1966, agricultural production in Mercer County included 6.4 million pounds of burley tobacco and 250,000 bushels of corn. Livestock on farms on January 1, 1967, included 33,800 cattle and calves, 7,900 hogs and pigs, and 9,600 sheep and lambs. Milk cows on farms during 1965 averaged 7,500 head, with milk production for the year totaling 46.9 million pounds.

### Mineral Resources

Limestone is the chief mineral resource of Mercer County. The lower grades are used in crushed stone and road materials. Other uses are in agricultural purposes. The "Kentucky Marble" is used in the building industry as a dimension stone due to its ability to take a polish.

### Water Resources

Surface water is available from Herrington Lake and the Kentucky and Salt Rivers. These are large enough and of a quality to be industrial sources.

Ground water occurrences are from rocks of the Middle Ordovician series. The latest available information indicates that wells drilled in areas along the Salt River, limited areas along the Kentucky River, and fringe areas of Herrington Lake will produce sufficient water for a domestic supply with a power pump and pressure system (more than 500 gallons a day) at depths of less than 100 feet. Some wells may yield as much as 50 gallons per minute from alluvium or thick limestone along large streams.

Most wells drilled along the Chaplin River and its tributaries, as well as the main tributaries of the Salt and Kentucky Rivers, will produce enough water for a domestic supply with a hand pump (100 to 500 gallons a day) at depths less than 100 feet. Some wells will produce more than 500 gallons a day except during dry weather.

Away from the main drainage areas, most drilled wells will not produce sufficient water for a domestic supply (100 gallons a day).

Water produced from wells in the county will likely be hard or very hard and may contain salt or hydrogen sulfide, particularly at depths greater than 100 feet.

### Forests

There are 17,500 acres of commercial forest land in Mercer County, covering 10.7 percent of the total land area. The most abundant species are white and red oaks, hickories, ash, hard maple, and black walnut.

Within a 50-mile radius of Harrodsburg, there are more than 104 million acres of commercial forest land. In 1962, 60 million board feet of timber were harvested from this area. While some of the timber harvest is used locally, much of it is shipped out of the area for further processing.

Forests of the entire area receive organized protection from fire from the State Department of Natural Resources.

### Climate

Harrodsburg has an attractive year-round climate, which is characterized by the lack of extremes and severe changes.

Winter is short - snowfall is light and occurs mostly during December and January. The snow rarely lasts longer than a few days.

Rainfall in Harrodsburg is sufficient for each season. The average yearly precipitation is 42.12 inches occurring mostly in June and July.

Sunshine is common. In an average year 99 days are clear, 105 partly cloudy, and 161 cloudy. The normal monthly minimum temperature ranges from 25.7° to 66.4° F. The yearly average temperature ranges from 33.7° to 76.2° F.

Prevailing winds are from the south. Harrodsburg has an average of only 18 days of fog per year.



## LOCAL GOVERNMENT

### Structure

Harrodsburg, a fourth-class city, is governed by a mayor and four commissioners, all serving four-year terms of office.



CITY HALL

The Mercer County government is headed by a fiscal court composed of a judge and six magistrates, all of whom serve four-year terms.

### Finance

Total revenue receipts for Harrodsburg in 1967 amounted to \$543,638.46, and total expenditures were \$430,211.24. Bonded indebtedness is \$600,000 for water and sewer improvements. School district bonds outstanding total \$1,157,273.

Mercer County's estimated budget for the fiscal year 1968-69 is \$208,100. The county's bonded indebtedness is presently \$2,354,000.

### Taxes

Property taxes are a major source of income for Harrodsburg and Mercer County. Property must be assessed at 100 percent of value under provisions of the Kentucky Constitution. Net assessed value of property in these jurisdictions is:

<u>Major Classes of Property</u>	<u>Harrodsburg</u>	<u>Mercer County</u>
Real Estate	\$27,206,047	\$80,798,107
Tangibles	7,230,142	10,104,341
Public Service	2,102,833	17,753,093

Property tax rates for Harrodsburg are shown below:

TABLE 8

PROPERTY TAX RATES PER \$100 OF ASSESSED VALUE FOR  
HARRODSBURG AND MERCER COUNTY, 1968

<u>Taxing Unit</u>	<u>Harrodsburg</u>	<u>Mercer County</u>
State	\$ .015	\$ .015
County	.150	.150
School	.788	.660
City	<u>.018</u>	<u>          </u>
Total	\$ .971	\$ .825

The City of Harrodsburg requires a business license for all commercial-type businesses. Fees range from \$10 to \$100 annually.

Harrodsburg is empowered by state law to allow a five-year tax exemption from municipal taxation for new industry.

### Planning and Zoning

The Harrodsburg Planning Commission has completed a Comprehensive Plan, Subdivision Regulations and a revised Zoning Ordinance.

The Workable Program for Community Improvement has been recertified until June, 1970; 80 units of low-cost public housing have been completed and 80 more are in the planning stage.

Harrodsburg has adopted and enforced all major codes and ordinances.



## Safety

Fire: Harrodsburg has a Class-6 American Insurance Association fire rating. The Harrodsburg Fire Department is staffed with six full-time firemen and twenty-five volunteers. Equipment includes a 1944 American La France 750-gpm pumper, a 1959 Mack 1,000-gpm pumper, a 1968 American La France quint with a 1,000-gpm pumper, a Ford truck equipped with emergency supplies. Emergency equipment includes two respirators, four generators, six Scott self-containing air packs with twelve reserve cylinders, and two MSA masks. The department is housed in a new fire station.

A second fire station is now under construction and will be operative by the Summer of 1969.

The Mercer County Fire Department is staffed with twenty volunteers. Equipment includes a 1955 American La France 500-gpm pumper and a 1960 American La France 1100-gallon tanker. Each truck is equipped with a portable pumper. Rescue equipment is available from the Harrodsburg Fire Department.

Police: The Harrodsburg Police Department is staffed with one chief, one assistant chief and six patrolmen. Motorized equipment includes two radio-equipped patrol cars. The department recently moved into a new building.

Mercer County is provided police protection by the county sheriff and two deputies. Equipment includes three privately owned cars, two of which are radio-equipped. Protection is also provided by two state police units.

## Sanitation

Harrodsburg provides garbage collection service once each week for both business and residential areas. The disposal of garbage is through the land fill method. Collection fees are \$1 per month for residential areas and \$4 per month for business areas.

## HEALTH

### Hospitals

The James B. Haggin Memorial Hospital, located in Harrodsburg, has 80 beds and 12 bassinets. This general hospital is staffed by an administrator, ten medical doctors, seventeen registered nurses, eighteen licensed practical nurses, three dentists and two radiologists. Fourteen other medical specialists are available on a consulting basis.

Facilities for major and minor surgery, EKG, X-ray, and laboratory services are available.

The hospital is equipped with a new \$15,000 emergency generator to guard against power failure.



JAMES B. HAGGIN MEMORIAL HOSPITAL

### Public Health

Public health services are provided by the Mercer County Health Department, located in Harrodsburg. It is staffed by a health officer part time, two nurses, two clerks, a sanitarian, and a part-time nutritionist. A budget for 1968-69 of \$43,000 is utilized in the following programs: pre-school, maternal and child care; communicable disease control; sanitation; and general health.



## OTHER LOCAL FACILITIES

### Housing

Rental housing in Harrodsburg is relatively easy to obtain. A new apartment project just completed consists of six units, and an eight-unit project of similar nature is currently under construction. These projects will be centrally air-conditioned and the rent will range from \$100 to \$115 per month.

Construction cost of an average three-bedroom brick veneer house with full basement ranges from \$16,000 to \$20,000.

### Communication

Telephone: Harrodsburg is served by the South Central Bell Telephone Company. Direct dialing is available to 8,700 subscribers in Mercer County.

Telegraph: Telegraph service is provided in Harrodsburg by Western Union. Hours of operation are 8 a. m. to 5 p. m. daily.

Postal: Postal facilities are provided by the Harrodsburg Post Office, a first-class facility staffed with 23 full-time employees. Mail is received and dispatched four times daily by truck. Daily delivery is provided to four rural routes and in the business district. The 1967-68 postal receipts totaled \$109,551.

Newspapers: The Harrodsburg Herald, a weekly paper published on Wednesday, has a circulation of 4,550. It distributes newspapers nationwide to former residents and worldwide to hometown servicemen. Other newspapers are received daily from Louisville and Lexington.

Radio: Local radio reception is provided by WHBN located in Harrodsburg. The station operates on 1,000 watts. Other good radio reception comes from Lexington and Louisville.

Television: Excellent television reception is found in Harrodsburg, coming from stations located in Lexington and Louisville, Kentucky, and Cincinnati, Ohio. A new TV cable system is available at a hook-up charge of \$14.95 plus a monthly fee of \$4.50.

### Libraries

The Harrodsburg Public Library serves the Harrodsburg area with 14,500 volumes. Annual circulation is 7,200. Hours of operation are as follows: Tuesday, Thursday, and Friday from 2 to 5:30 p.m.; Saturday - 2 to 6 p.m.

### Churches

There are nine churches in Harrodsburg representing the following denominations: Baptist, Catholic, Christian, Church of Christ, Church of God, Episcopal, Methodist, and Presbyterian.

### Financial Institutions

<u>Bank</u>	<u>Statement as of June 30, 1968</u>	
	<u>Assets</u>	<u>Deposits</u>
Mercer County National Bank	\$5,407,220.76	\$4,429,601.82
State Bank & Trust Co.	3,695,832.71	3,072,543.09
Citizen's Bank	1,294,010.06	1,039,064.06
<u>Savings and Loan Associations</u>	<u>Assets</u>	<u>Shared Accounts</u>
Harrodsburg First Federal Savings & Loan	\$8,006,162	\$7,532,134
Mercer Federal Savings & Loan	4,527,054	4,299,491

### Hotels and Motels

<u>Name</u>	<u>Rooms or Units</u>
Aspen Hall Guest House	9
Bailey's Motel	21
Beaumont Inn	33
Fort Harrod Motel	6
Park View	20
Stone Manor Motel	30
Town House Motel	14

### Clubs and Organizations

Business and Civic: Chamber of Commerce, Jaycees, Kiwanis, Lions, Rotary, Optimist, Toastmaster, Ruritan, Medical Society, Ministerial Association, Red Cross



Fraternal: American Legion, Masonic Lodge, VFW

Women's: Woman's Club, DAR, Eastern Star, Homemakers, Garden Club

Other Clubs and Organizations: Harrodsburg Historical Society, Mercer County Fish and Game Club, Herrington Woods Country Club, Mercer County Archery Club, PTA

### Recreation

Local: Harrodsburg has three local outdoor recreation areas. Pioneer Memorial State Park, a reproduction of Fort Harrod, has a picnic area, shelter house and amphitheater where outdoor drama is performed during the summer. Young's Park has a picnic area, playground and shelter house. The Mercer County Game and Fish Farm has facilities for fishing and picnicking.

A community summer recreation program that includes arts and crafts, handicrafts, dancing and athletics is provided. A similar twelve month program is in the planning stage.

Harrodsburg has two outdoor swimming pools, one roller skating rink, one nine-hole and one eighteen-hole golf course, and one indoor and one outdoor theater.

Baseball leagues include: Pewee League, Little League, Babe Ruth League, and American Legion Leagues.

Football leagues include: Pewee League and Little League.

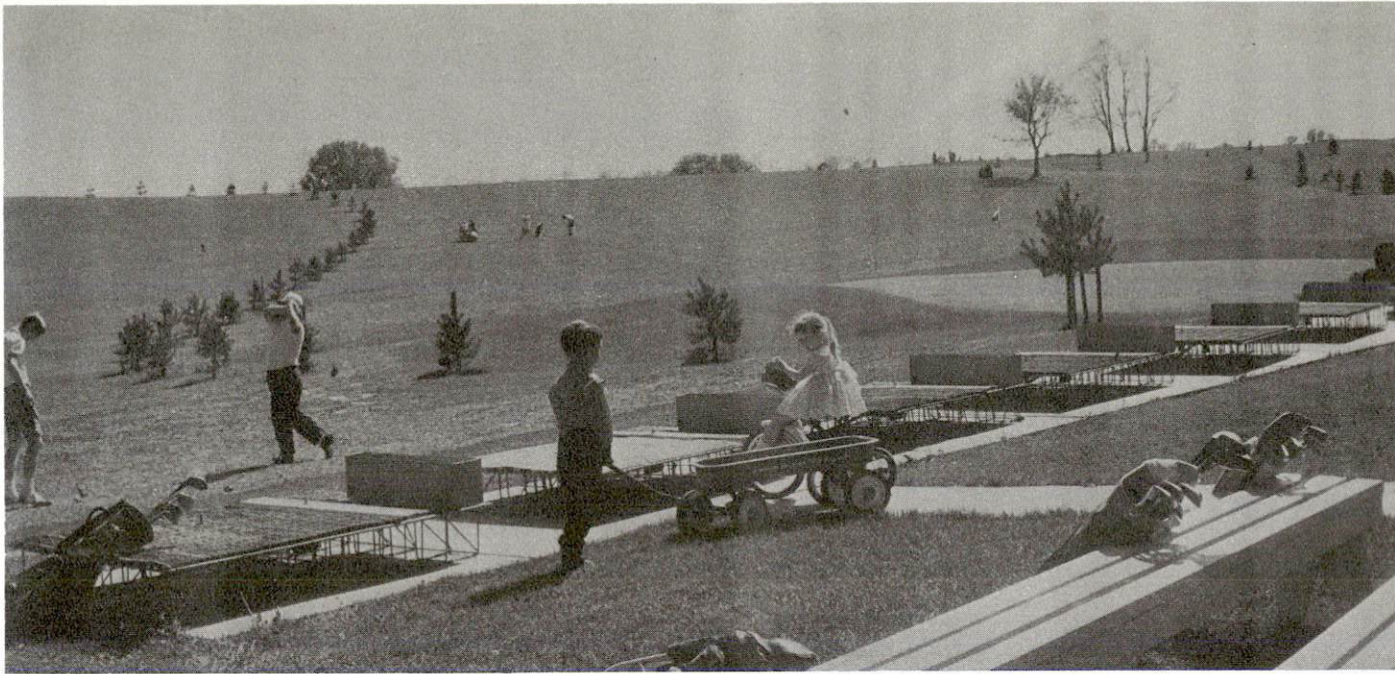
Softball leagues are sponsored by local churches.

Area: Nearby Danville is filled with historical memorials such as Constitution Square and Isaac Shelby Memorial.

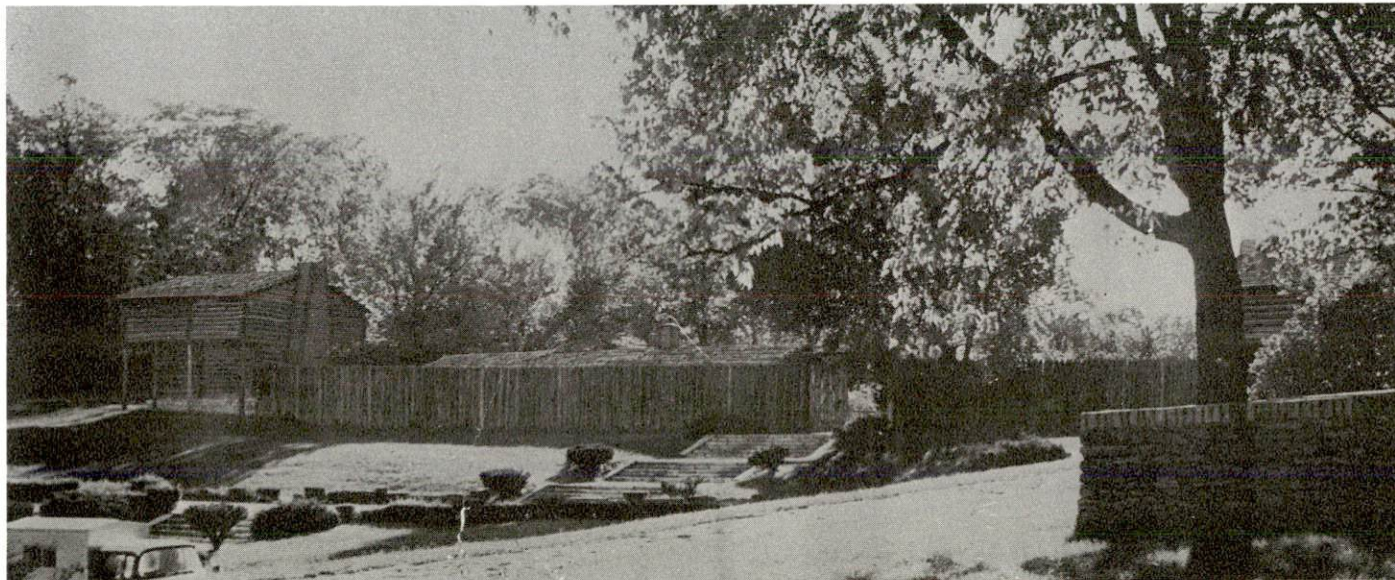
Lexington offers thoroughbred racing in the spring and fall at Keeneland Race Course and trotting races and horse shows at the Big Red Mile Trotting Track.

Perryville Battlefield State Park, located 10 miles distant, is the site of one of the greatest single military events in the history of Kentucky, the Battle of Perryville. Two memorials have been constructed on this site to commemorate this battle, one dedicated to the Union soldiers and one to the Confederate soldiers.





GOLF COURSE



FORT HARROD



Shakertown, a once prosperous Shaker community, is located 6 miles east of Harrodsburg on U. S. Highway 68. An extensive restoration project is underway to preserve the nineteenth century religious community. Shakers (named for a frenzied dance in their worship ritual) were a pious sect believing in celibate purity, confession of all sins, and communal work and ownership. Buildings currently on exhibit include the meeting house and segregated family dwelling house. Restaurant facilities are excellent.

Herrington Lake provides facilities for boating, hiking, fishing, golfing, camping and lodging. A new 70-unit overnight trailer park was recently built near this lake.

College athletic events can be viewed in Lexington and Louisville at the University of Kentucky and the University of Louisville, respectively. High school basketball and football are very popular in all areas of Kentucky.

#### Community Improvements

Public: A new fire and police station - a new elementary and junior high school - cable TV system - Morgan Row restoration - \$2 1/2 million Shakertown restoration - sewage treatment plant expanded - new and larger water mains installed - new Federal low-rent housing project - review of city ordinances - complete four-laning of U. S. Highway 127 south of Harrodsburg.

Business and Industrial: Beaumont Plaza Shopping Center - remodeled Mercer County National Bank - new Hall-Mack, Division of Randall Corp. plant - telephone improvements of \$150,000 in Mercer County - upgrading of electric facilities by local utility company.

## HISTORY

Mercer County was formed from Lincoln County in 1785 and became the sixth county to be formed in Kentucky. It was named after General Hugh Mercer of Virginia, who was killed in the Battle of Princeton during the Revolutionary War. A native of Scotland, he fought on the losing side in the Battle of Culloden before coming to America.

Harrodsburg was the first permanent pioneer settlement west of the Alleghenies. Captain James Harrod first explored the area in 1773. He later returned in 1774 with 31 men and settled Harrodsburg. They were soon forced to withdraw because of hostile Indians. They returned in the Summer of 1775 with their women and children and became the first families to settle in the west.

In 1775, George Rogers Clark settled in Harrodsburg and planned his expeditions against the British forts in Illinois, from which constant Indian attacks were springing.

During the Revolutionary War, Harrodsburg was the seat of Kentucky County which had become part of Virginia in 1776. At that time the population of Harrodsburg was 198. The name of the settlement was changed from Harrodstown to Oldtown and later, in 1785, the name was changed to Harrodsburg.

Bacon College was moved to Harrodsburg in 1839 and remained until 1854, when it burned. Greenville Tenale College was established in 1880, then later the name was changed to Daughters' College. The college was discontinued early in the twentieth century and now is known as Beaumont Inn.

Three distinguished governors of Kentucky were born in Harrodsburg - John Adair, Gabriel Slaughter, and Beriah Magoffin.

Mercer County's economy has historically been based on agriculture due to the fertile, rolling bluegrass farm lands spread out on every side of Harrodsburg.

In spite of Harrodsburg's pride in its historical past, it is looking to the future. It has become a city in which all generations blend in harmony. Now, with its citizens actively seeking industry, the city may well be standing on the threshold of a great future.



## SOURCES OF INFORMATION

- 1/ U. S. Bureau of the Census, U. S. Census of Population, Kentucky.
- 2/ Department of Sociology, University of Kentucky, Kentucky County Provisional Population Estimates, 1968, Lexington, Kentucky.
- 3/ Kentucky Department of Economic Security, Division of Research and Statistics.
- 4/ Kentucky Department of Economic Security, Employment Service Office.
- 5/ Kentucky Department of Commerce, Kentucky's Labor Supply Estimates, 1968.
- 6/ University of Kentucky, Office of Development Service and Business Research.
- 7/ Kentucky Department of Education, Kentucky School Directory, 1968-69.
- 8/ Southern Railway System, Louisville, Kentucky.
- 9/ Davenport's Transfer, Harrodsburg, Kentucky.
- 10/ Southern Railway System, Washington, D. C.