

1974

Industrial Resources: Monroe County - Tompkinsville and Gamaliel

Kentucky Library Research Collections
Western Kentucky University, spcol@wku.edu

Follow this and additional works at: https://digitalcommons.wku.edu/monroe_cty



Part of the [Business Administration, Management, and Operations Commons](#), [Growth and Development Commons](#), and the [Infrastructure Commons](#)

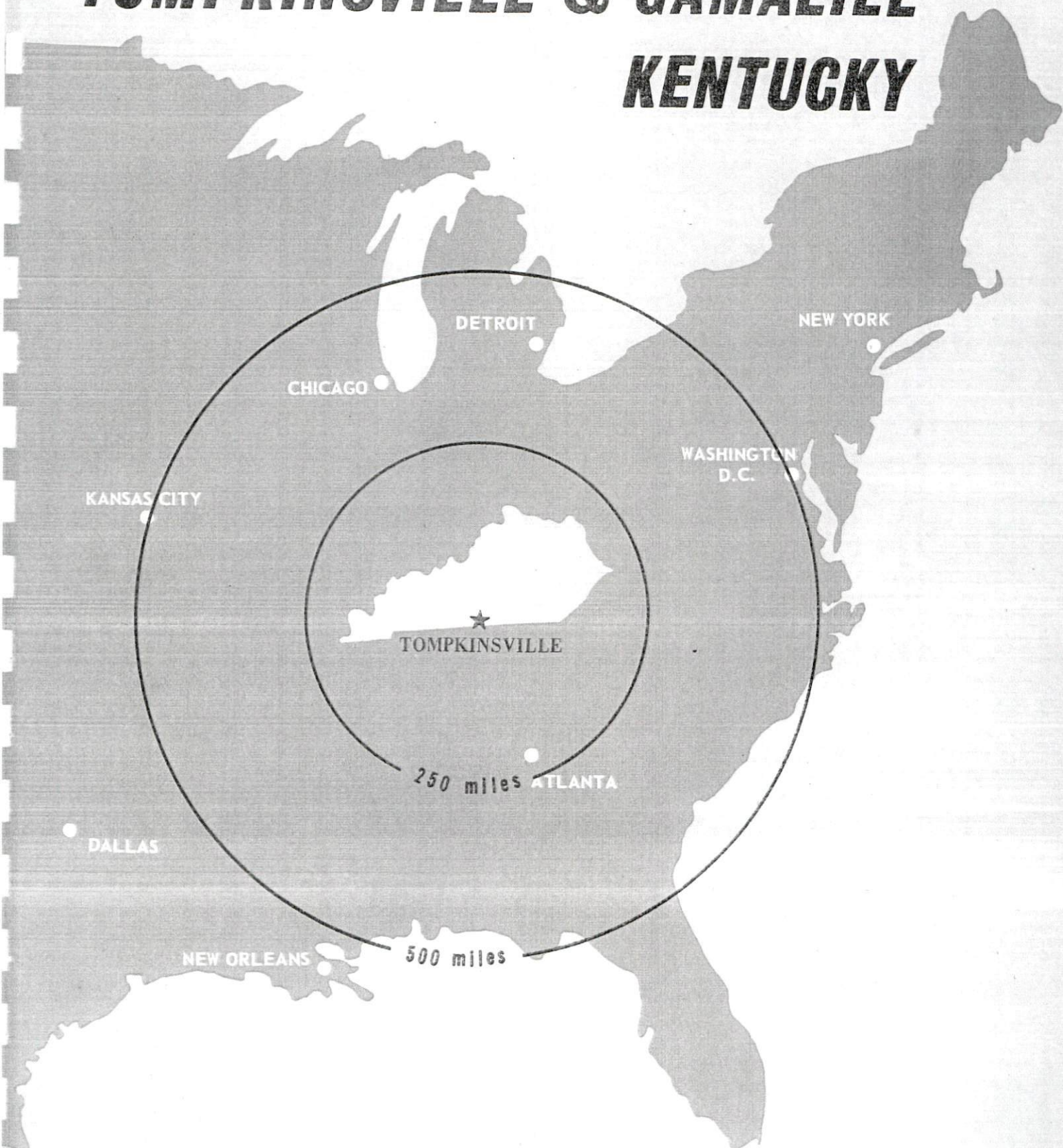
Recommended Citation

Kentucky Library Research Collections, "Industrial Resources: Monroe County - Tompkinsville and Gamaliel" (1974). *Monroe County*. Paper 9.
https://digitalcommons.wku.edu/monroe_cty/9

This Report is brought to you for free and open access by TopSCHOLAR®. It has been accepted for inclusion in Monroe County by an authorized administrator of TopSCHOLAR®. For more information, please contact topscholar@wku.edu.

INDUSTRIAL RESOURCES

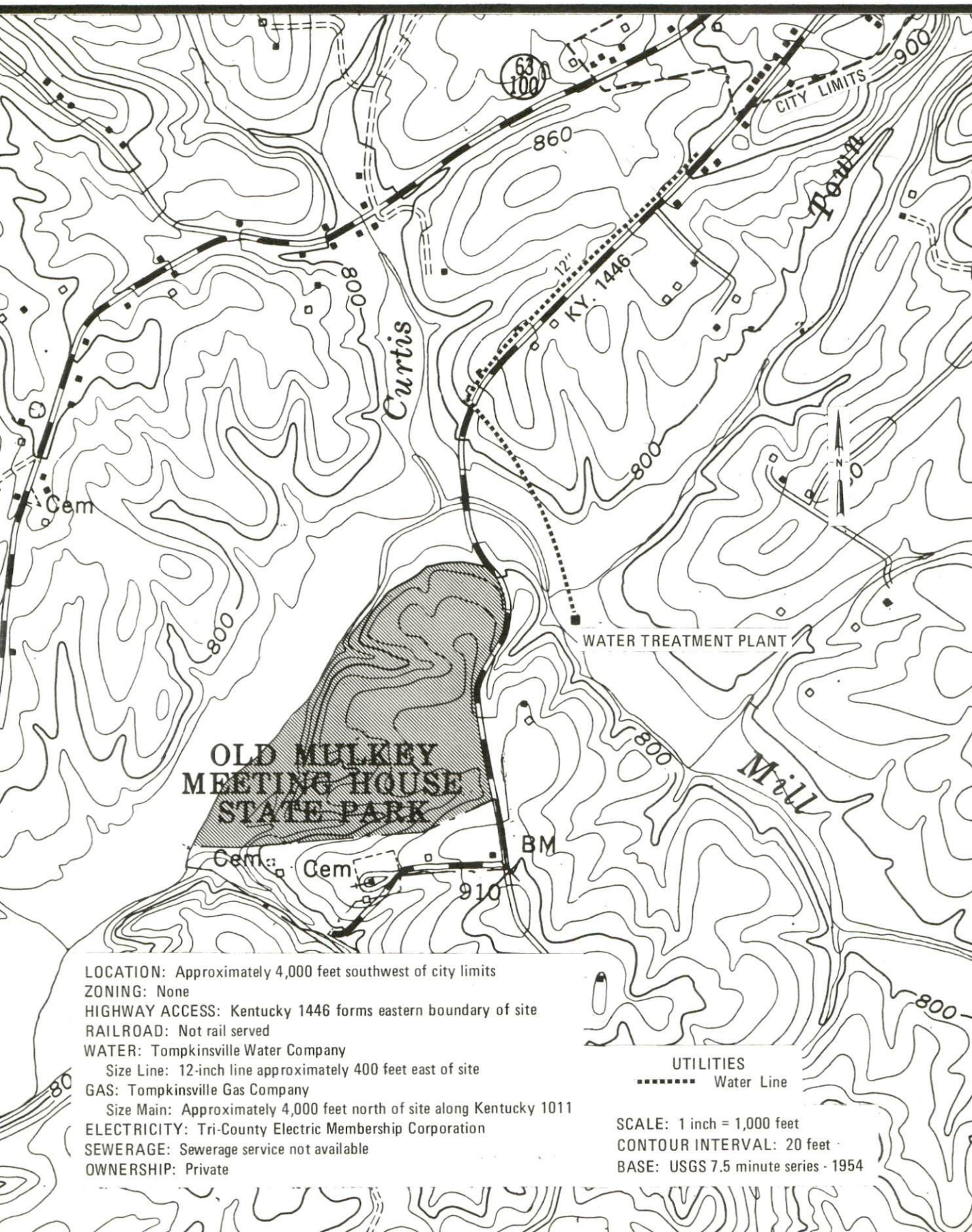
TOMPKINSVILLE & GAMALIEL KENTUCKY



MONROE COUNTY, KENTUCKY

TOMPKINSVILLE, KENTUCKY --- Site No. 174 -- 60 Acres

For more information contact Mr. Tom Evans, Tompkinsville, Kentucky or the Kentucky Department of Commerce, Capital Plaza Office Tower, Frankfort, Kentucky.



LOCATION: Approximately 4,000 feet southwest of city limits

ZONING: None

HIGHWAY ACCESS: Kentucky 1446 forms eastern boundary of site

RAILROAD: Not rail served

WATER: Tompkinsville Water Company

Size Line: 12-inch line approximately 400 feet east of site

GAS: Tompkinsville Gas Company

Size Main: Approximately 4,000 feet north of site along Kentucky 1011

ELECTRICITY: Tri-County Electric Membership Corporation

SEWERAGE: Sewerage service not available

OWNERSHIP: Private

UTILITIES

..... Water Line

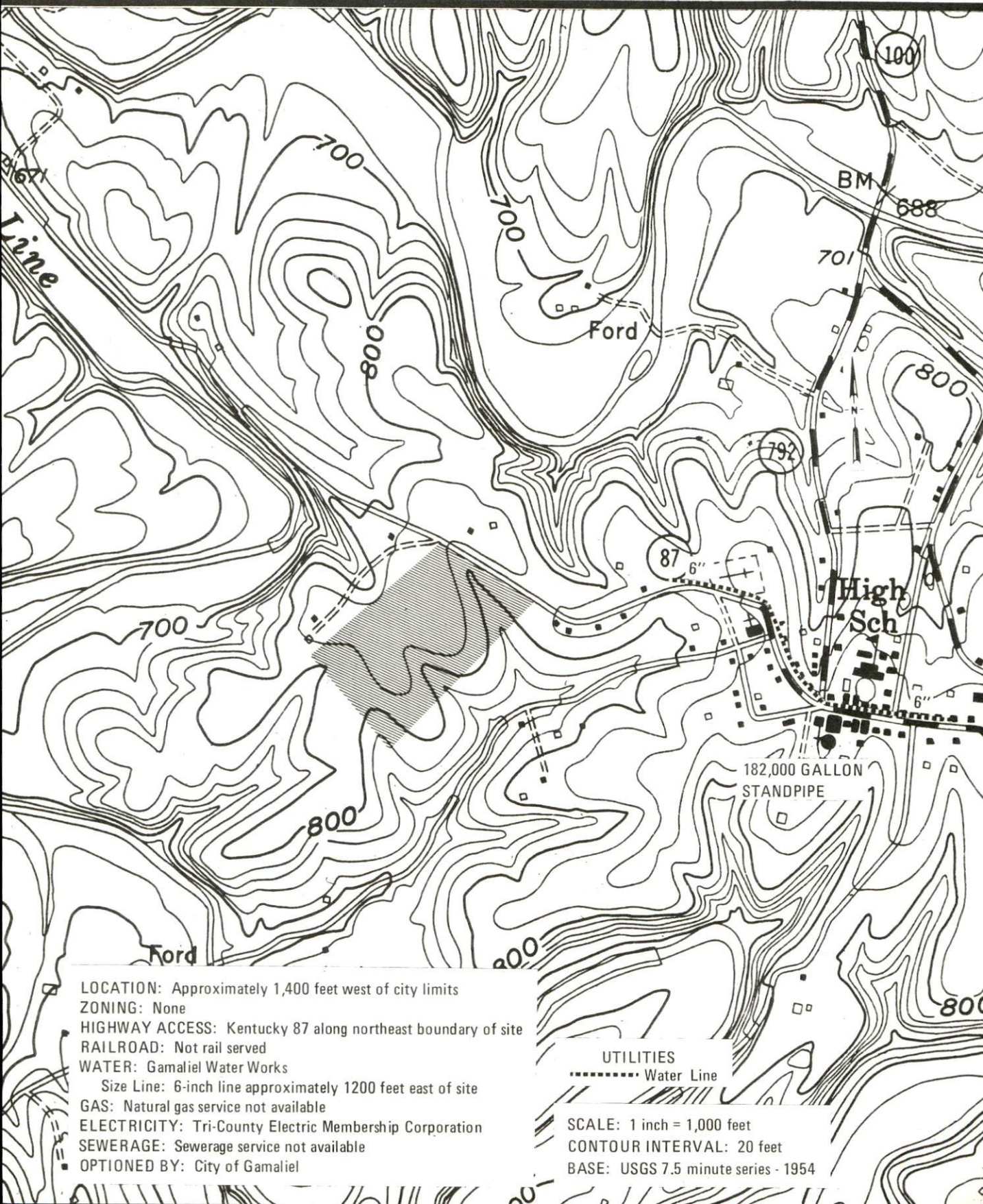
SCALE: 1 inch = 1,000 feet

CONTOUR INTERVAL: 20 feet

BASE: USGS 7.5 minute series - 1954

GAMALIEL, KENTUCKY --- Site No. 174 -- 30 Acres

For more information, contact Mr. Morris Carter, Gamaliel Consolidated Schools, Gamaliel, Kentucky
or the Kentucky Department of Commerce, Capital Plaza Tower, Frankfort, Kentucky 40601.



INDUSTRIAL RESOURCES
TOMPKINSVILLE AND GAMALIEL, KENTUCKY

Prepared by
The Kentucky Department of Commerce
in cooperation with
The Tompkinsville Chamber of Commerce
and
The City of Gamaliel

1974

This copy has been prepared by the Kentucky Department of Commerce,
Division of Research and Planning, and the cost of printing paid from
state funds.

TABLE OF CONTENTS

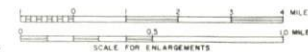
<u>Chapter</u>	<u>Page</u>
INDUSTRIAL SITES	i
TOMPKINSVILLE AND GAMALIEL, KENTUCKY - A RESOURCE PROFILE	1
THE LABOR MARKET.	5
Population Trends	5
General Employment Characteristics, 1972	5
Manufacturing Employment Trends by Industry.	6
Tompkinsville and Gamaliel Manufacturing Firms, Their Products and Employment	6
Wages.	8
Labor Organizations	9
Estimated Male Labor Supply	9
Estimated Female Labor Supply	9
Per Capita Personal Income.	10
TRANSPORTATION	11
Rail.	11
Truck Service	11
Air	12
Taxi	12
Rental Services.	12
POWER AND FUEL	13
Electricity.	13
Natural Gas	13
Other Fuels	13
WATER AND SEWERAGE	15
Water.	15
Sewerage	16
LOCAL GOVERNMENT	17
City.	17
County.	17
Assessed Value of Property, 1973	17

<u>Chapter</u>	<u>Page</u>
Property Taxes	17
Local Property Tax Rate Per \$100 of Assessed Valuation, 1973	18
Utilities Gross Receipts Tax for Schools	18
Planning and Zoning	18
Safety	18
Police	18
Fire	19
Rescue Service	19
Sanitation	19
EDUCATION	20
Public Schools	20
Vocational Schools	20
Colleges and Universities	21
HEALTH	22
Hospitals	22
Nursing Homes	22
Public Health	22
OTHER LOCAL FACILITIES	23
Communications	23
Library Services	24
Religious Institutions	24
Financial Institutions	24
Hotels and Motels	24
Clubs and Organizations	25
RECREATION	26
Local	26
Area	26
AGRICULTURE - NATURAL RESOURCES - CLIMATE	27
Agriculture	27
Natural Resources	27
Climate	28
HISTORY	29

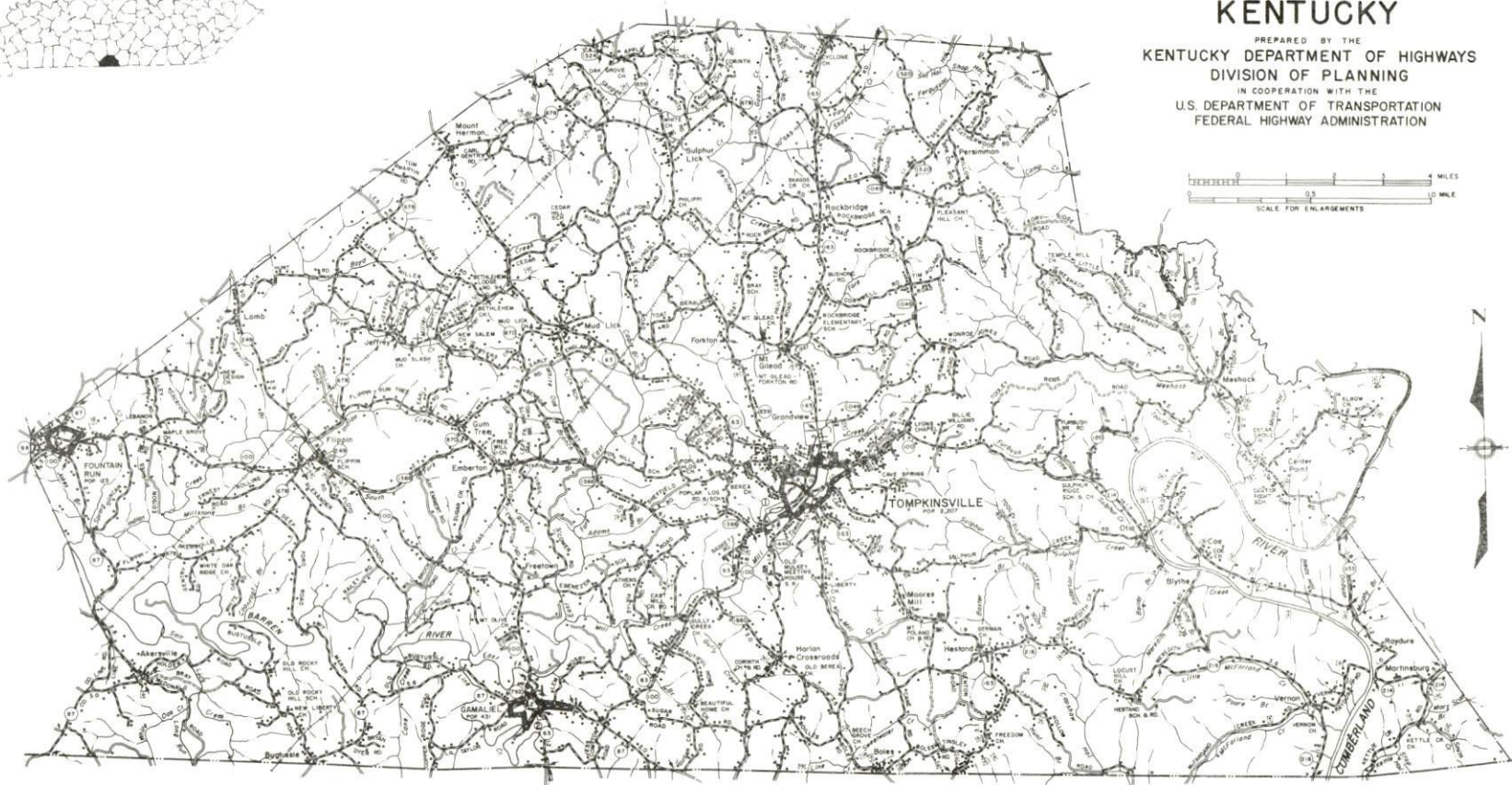


GENERAL HIGHWAY MAP MONROE COUNTY KENTUCKY

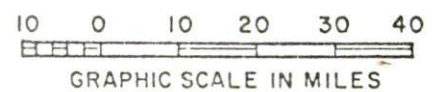
PREPARED BY THE
KENTUCKY DEPARTMENT OF HIGHWAYS
DIVISION OF PLANNING
IN COOPERATION WITH THE
U.S. DEPARTMENT OF TRANSPORTATION
FEDERAL HIGHWAY ADMINISTRATION



ORIGINAL DATA 1968		
DATE	BY	REVISIONS
10/1/68	W. J. H.	1
10/1/68	W. J. H.	2
10/1/68	W. J. H.	3
10/1/68	W. J. H.	4
10/1/68	W. J. H.	5
10/1/68	W. J. H.	6
10/1/68	W. J. H.	7
10/1/68	W. J. H.	8
10/1/68	W. J. H.	9
10/1/68	W. J. H.	10



Shaded area denotes Labor Market.



TOMPKINSVILLE AND GAMALIEL, KENTUCKY - A RESOURCE PROFILE

Tompkinsville, the county seat of Monroe County, is situated in the southcentral portion of the county. Tompkinsville is 119 miles south of Louisville, Kentucky, and 48 miles northeast of Nashville, Tennessee. In 1970, Tompkinsville had a population of 2,207.

Gamaliel, located in the southwestern portion of Monroe County, is 8 miles west of Tompkinsville and is situated between the Barren River to the north and Tennessee to the south. In 1970, Gamaliel had a population of 431.

Monroe County, with a land area of 334 square miles, is located in southcentral Kentucky. The Kentucky-Tennessee line forms the southern boundary of the county. Monroe County had a 1970 population of 11,642.

The Economic Framework

Total employment in Monroe County averaged 4,350 in 1972, with agriculture providing 1,250 jobs, manufacturing 1,010, government 550, and trade and services 439. Since 1963, manufacturing employment has increased by 126 percent or 595 jobs. The major industrial product is clothing.

Per capita personal income in the county in 1971 was \$1,918, a 114.5 percent increase since 1961.

The Tompkinsville-Gamaliel labor market area includes Monroe, the four adjoining Kentucky counties, and the two adjoining Tennessee counties. Employment in the Kentucky portion of the labor market area totaled 27,260 in 1972, with agriculture accounting for 6,600 jobs, manufacturing 6,020, government 2,950, and trade and services 4,810. Manufacturing employment in the Kentucky portion of the labor market area has increased 112 percent since 1963, with the sharpest gains in the electrical machinery industry.

This area has a deficit of 356 manufacturing jobs when measured against the national industrial employment-population ratio. This indicates an area with a potential for additional manufacturing production.

Resources for Growth

1. There is a current estimated labor supply of 3,120 men and 2,860 women available for industrial jobs in the Kentucky portion of the labor market area. In addition 3,458 young men and 3,230 young women will become 18 years of age by 1980 and potentially available for work. Also, the current labor supply will be increased by the number of men and women in the adjoining Tennessee counties who are available for industrial jobs.

2. Tompkinsville and Gamaliel are provided highway access by over 15 Kentucky routes. An entrance to the Cumberland Parkway is located 27 miles away in Glasgow, providing easy access to the interstate highway system. The nearest rail service is provided by the Louisville & Nashville Railroad Company at Glasgow, 27 miles from Tompkinsville. The nearest commercial airport is 48 miles from Tompkinsville at Nashville, Tennessee.

3. Tompkinsville and Gamaliel are provided electric service by the Tri-County Electric Membership Corporation. The Tompkinsville Gas Company provides Tompkinsville with natural gas. Gamaliel does not have natural gas service but there are five propane and butane distributors and seven distillate fuel oil distributors serving the area. Tompkinsville has an excess daily capacity of 600,000 gallons of treated water available, while Gamaliel has an excess daily capacity of 45,000 gallons.

4. A consolidated public school system operates in Monroe County and educational television is being utilized in the school system.

There are five universities, seven senior colleges, and one junior college located within 65 miles of Tompkinsville.

An area vocational education center is located in Tompkinsville and offers 7 courses. The nearest state vocational-technical school is in Bowling Green, 63 miles from Tompkinsville, and offers 23 fields of study.

Community Programs for Improvement

Tompkinsville

Recent - A new 1,500,000 gpd water treatment plant and additional lines and service mains; a new 500,000 gpd sewage treatment plant; and a 100-acre lake for fishing and recreational activities.

Under construction - A recreational complex at the 100-acre lake for picnicking, camping, hiking, fishing, boating, and sports; an apartment complex; a new subdivision; and a new football stadium.

Planned - Five miles of additional water lines and a 500,000-gallon storage tank; a lift station that will add 100 homes to the sewerage system; expansion of the Monroe County Area Vocational Education Center's curriculum to include welding and health careers; and an expansion of the Monroe Rest Home, Inc.

Gamaliel

Recent - A new city hall and fire station; a new bank; a new police car; new equipment for the fire department; and two new subdivisions.

Under construction - A Sportsmen's Clubhouse; a community park; and a new funeral home.

Planned - A sewerage disposal system; and road improvements.

Monroe County School System

Tompkinsville

Recent - New athletic field including football field, track field, two tennis courts, a 5,000-seat stadium, and expansion of the parking lot.

Planned - Levels program at the J. H. Carter Elementary School; and phase electives in English and social studies at the high school.

Gamaliel

Recent - Addition of educational TV and video tape; added career education; foreign languages; new library; new classroom additions; new gymnasium, remodeled offices; and repaved driveways.

Planned - To have a Standard rating by 1975; a new agricultural shop; and a new addition to the school to house Title 1 and Title 3 programs.

Recreation, Entertainment and Livability

Old Mulkey Meeting House State Shrine, in Tompkinsville, offers picnic areas and playgrounds. The House was built in 1804, and is the oldest log meeting house in the state. Daniel Boone's sister is buried in the graveyard and authentic records written in pokeberry ink are on display.

Dale Hollow Lake offers 27,700 acres of prime scenic and fishing waters. An entrance to the park is 20 miles from Tompkinsville.

Barren River Lake State Resort Park is located only 38 miles from Tompkinsville. The park covers 1,500 acres on a 10,050-acre lake. Accommodations include a resort lodge and coffee shop, cottages, and camping. The park features a pool, riding stables, nature trails, open and covered boat slips, boat rental, 8 boat ramps, 9-hole par 3 golf course, planned recreation, playground, tennis, and a gift shop.

Mammoth Cave National Park is 56 miles from Tompkinsville. Beneath 51,000 park acres, Mammoth Cave is among the major tourist attractions of all time. It is one of the largest cave networks ever discovered, with at least 150 miles charted on five levels and vast areas not yet mapped. Some famous sights are Snowball Dining Room (267 feet below surface), Frozen Niagara, Crystal Lake and Bottomless Pit. Above ground this region offers a 51,000-acre national park, a state park, 2 state shrines, 2 large lakes, many

historical sights, festivals, hillside chair lifts and even a prominent wax museum. The park also contains a hotel, motor lodge, cottages, dining room, coffee shop, service station, facilities for tennis and shuffleboard. There are gift and craft shops with numerous Kentucky handicraft items, and live craft exhibits during the summer.

Lake Cumberland State Resort Park, in Jamestown, is 75 miles from Tompkinsville. The park consists of 3,000 acres on beautiful Lake Cumberland. A lodge with a dining room, and a gift shop; cottages; and camping provide a diversity of accommodations. The park offers fishing, Olympic-size pool, resort pool, bathhouse, boats, paddle boats, houseboats, motors, dock, ramp, tennis, hiking, horseback riding, picnic areas and shelters, playground, 9-hole golf course, miniature golf course, and multipurpose convention center.

Green River Lake State Park is 77 miles from Tompkinsville, in Campbellsville. This 1,182-acre park is on an 8,360-acre lake. The park offers camping, fishing, swimming, beach, boating, docks, boat rental and picnic areas.

Abraham Lincoln Birthplace National Historic Site, located in Hodgenville, is 79 miles from Tompkinsville. The grounds include 100 acres of the original Thomas Lincoln farm where Abraham Lincoln was born. Lincoln's birthplace, a little log cabin, is enclosed in a granite memorial shrine. The Visitor's Center has exhibits and an audio visual program. Picnic grounds, hiking trails, and a 300-year-old Boundary Oak, an old landmark even in Lincoln's time, complete the park attractions.

Tompkinsville and Gamaliel are within 70 miles of three Tennessee state parks - 14,000-acre Pickett State Park, 11,000-acre Standing Stone State Park, and 8,900-acre Cedars of Lebanon State Park. These parks offer camping, picnicking, hiking, boating, fishing, swimming and lodge or cabin accommodations.

THE LABOR MARKET

POPULATION TRENDS

Area	Population				Percent Change	
	1972*	1970	1960	1950	1960-70	1950-60
Tompkinsville	N. A. **	2,207	2,091	1,859	+ 5.5	+12.5
Gamaliel	N. A.	431	868	N. A.	-50.4	N. A.
Labor Market Area	69,300	67,944	68,573	75,178	- 0.9	- 8.8
Monroe County	12,400	11,642	11,799	13,770	- 1.3	-14.3
Allen County	12,800	12,598	12,269	13,787	+ 2.7	-11.0
Barren County	29,500	28,677	28,303	28,461	+ 1.3	- 0.6
Cumberland County	6,500	6,850	7,835	9,309	-12.6	-15.8
Metcalfe County	8,100	8,177	8,367	9,851	- 2.3	-15.1

*Provisional estimates.

**Not available.

Sources: U. S. Department of Commerce, Bureau of the Census, Census of Population, 1970, 1960, 1950. U. S. Bureau of the Census, Current Population Reports, Series P-26, June 1973.

GENERAL EMPLOYMENT CHARACTERISTICS, 1972

Major Employment Group	Employment	
	Monroe County	Labor Market Area*
TOTAL	4,350	27,260
Agricultural	1,250	6,600
Nonagricultural	3,100	20,660
Manufacturing	1,010	6,019
Government	550	2,950
Trade and Services	439	4,806
Other	1,101	6,885

*Includes Monroe, Allen, Barren, Cumberland, and Metcalfe Counties.

Source: Kentucky Department for Human Resources, Bureau for Administration and Operations.

MANUFACTURING EMPLOYMENT TRENDS BY INDUSTRY
MARCH 1973 AND 1963

Industry	Monroe County			Labor Market Area*		
	1973	1963	%Change	1973	1963	%Change
TOTAL	1,067	472	+126.0	6,751	3,186	+111.9
Food & Kindred						
Products	82	41	+100.0	398	273	+ 45.8
Tobacco	0	0	0	1	1	0
Apparel, Textiles,						
Leather	821	313	+162.3	2,645	1,988	+ 33.0
Lumber, Furniture	132	109	+ 21.1	962	575	+ 67.3
Printing & Publishing,						
Paper	6	4	+ 50.0	404	55	+634.5
Chemicals, Petroleum						
& Coal, Rubber	0	0	0	55	11	+400.0
Stone, Clay & Glass	26	5	+420.0	26	7	+271.4
Machinery, Metal						
Products, Equip.	0	0	0	2,260	276	+718.8

*Includes Monroe, Allen, Barren, Cumberland and Metcalfe Counties.

Source: Kentucky Department for Human Resources, Number of Workers in Manufacturing Industries Covered by Kentucky Unemployment Insurance Law Classified by Industry and County, March 1973, March 1963.

TOMPKINSVILLE AND GAMALIEL, MANUFACTURING FIRMS,
THEIR PRODUCTS AND EMPLOYMENT

<u>Firm</u> (Establishment date)	<u>Product</u>	<u>Employment</u>		
		<u>Total</u>	<u>Male</u>	<u>Female</u>
<u>Tompkinsville</u>				
Roy Anderson Lumber Company (1956)	Rough lumber	34	34	0
Cudahy Company (1949)	Cheddar cheese	25	21	4
Glasgow Fertilizer Company, Inc. (1966)	Fertilizer	4	3	1
Haile Guitars (1943)	Hand-craft concert and folk guitars	2	1	1
Hammer Printing Service (1955)	Commercial printing	3	2	1
Key Manufacturing Company (1952)	Men's and boys' jeans and coveralls; and men's casual slacks	231	41	190
Monroe County Press (1947)	Newspaper and job printing	7	3	4

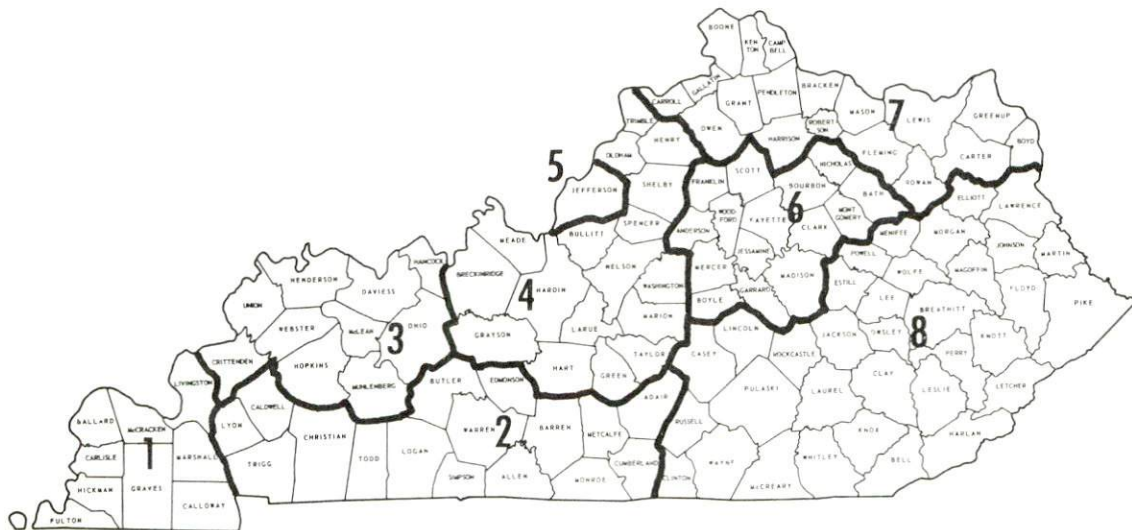
(Cont'd.)

<u>Firm</u> (Establishment date)	<u>Product</u>	<u>Employment</u>		
		<u>Total</u>	<u>Male</u>	<u>Female</u>
<u>Tompkinsville</u>				
Monroe Sweet Feed Mill (1949)	Feed	5	5	0
Travis Ready Mix Concrete (1973)	Ready mixed concrete, steel bulk cement silos, and ready mix plants	3	3	0
Tompkinsville Block Company (1961)	Concrete block, concrete tile septic tanks, and metal fertilizer mixing machine	7	6	1
Tompkinsville Manufacturing Company (1963)	Men's laundry pants	280	43	237
Tompkinsville Printing Company (1962)	Job printing and silk screening	3	3	0
<u>Gamaliel</u>				
Monroe Manufacturing Company (1960)	Casual slacks, men's sportswear, and women's sportswear	312	83	229
Hagon & Stone Pallet Company (1963)	Pallets	30	--	--
Stephens Manufacturing Company (1956)	Cement storage tanks	22	--	--
Source: Kentucky Department of Commerce, <u>1974 Kentucky Directory of</u> Manufacturers.				

WAGES

Occupational wage rates for specific industries are usually not available to most government agencies, and wage data furnished to state employment agencies by industrial employers is protected from disclosure by federal law. The most reliable up-to-date wage information can be obtained by direct contact with local employers.

Associated Industries of Kentucky, a voluntary organization of Kentucky businesses, regularly collects occupational wage rates and fringe benefits data from participating member firms. Data is compiled for over 130 clearly defined office, production, and service occupations. Tabulations are published for eight regions of Kentucky, as shown on the map below. It should be noted that the data may be weighted by the preponderance of firms in the larger cities and may be somewhat higher than the rates paid in the smaller communities. Data from these tabulations are available, upon request, from the Kentucky Department of Commerce, Frankfort, Kentucky 40601.



Associated Industries of Kentucky Area Wage Surveys

LABOR ORGANIZATIONS

There are no unions representing manufacturing workers in Tompkinsville or Gamaliel at this time.

ESTIMATED MALE LABOR SUPPLY TOMPKINSVILLE AND GAMALIEL LABOR MARKET AREA

Area	Current				Future
	Total	Not in Labor Force	Unemployed	Under-employed	Reaching 18 yrs. of age by 1980
Labor Market					
Area	3,120	1,070	740	1,310	3,458
Monroe	880	490	180	210	642
Allen	370	30	110	230	588
Barren	800	0	230	570	1,437
Cumberland	570	310	80	180	383
Metcalfe	500	240	140	120	408

Sources: Kentucky Department for Human Resources, Kentucky Labor Supply Estimates by County, 1973. Kentucky Department of Commerce, Future Labor Supply by 1980.

ESTIMATED FEMALE LABOR SUPPLY TOMPKINSVILLE AND GAMALIEL LABOR MARKET AREA

Area	Current				Future
	Total	Not in Labor Force	Unemployed	Under-employed	Reaching 18 yrs. of age by 1980
Labor Market					
Area	2,860	960	560	1,340	3,230
Monroe	650	320	100	230	548
Allen	420	0	90	330	565
Barren	860	70	220	570	1,365
Cumberland	350	140	80	130	319
Metcalfe	580	430	70	80	433

Sources: Kentucky Department for Human Resources, Kentucky Labor Supply Estimates by County, 1973. Kentucky Department of Commerce, Future Labor Supply by 1980.

PER CAPITA PERSONAL INCOME

<u>Area</u>	<u>1971</u>	<u>1961</u>	<u>% Change</u>
Monroe County	\$1,918	\$ 894	+114.5
Kentucky Labor			
Market Area Range	\$1,835 - 2,775	\$885 - 1,245	N.A.
Kentucky	3,310	1,677	+ 97.3
U. S.	4,164	2,265	+ 83.8

Sources: University of Kentucky, Office of Development Services and Business Research, Per Capita Income in Kentucky. U. S. Department of Commerce, Bureau of Economic Analysis, Survey of Current Business, August, 1973.

TRANSPORTATION

Rail

The nearest rail service is provided by the Louisville and Nashville Railroad at Glasgow, 27 miles from Tompkinsville

Services - One freight daily, siding for 200 cars, switching, and piggyback facilities

For details on routing, schedules, rates, and services, contact:

Manager of Industrial Development
Louisville and Nashville Railroad Company
908 West Broadway
Louisville, Kentucky 40203

Truck Service

Tompkinsville

Company

Home Office

Manning Motor Express, Inc.

1203 South Green Street
Glasgow, Kentucky 42141

T.S.C. Fast Express, Inc.

830 Willoughby Way N. E.
Atlanta, Georgia 30301

Tompkinsville Transfer Company*

304 Magnolia Street
Tompkinsville, Kentucky 42167

Other Freight Services

Nearest Shipping Centers

United Parcel Service

Campbellsville, 62 miles north of
Tompkinsville; and Bowling Green,
63 miles northwest of Tompkinsville
Tompkinsville

REA Express

*Local terminal.

HIGHWAY MILES AND TRUCK TRANSIT TIME IN DAYS FROM
TOMPKINSVILLE, KENTUCKY, TO SELECTED MARKET CENTERS

City	Delivery		City	Delivery	
	Highway Miles	Time TL		Highway Miles	Time TL
Atlanta, Ga.	300	3	Los Angeles, Calif.	2,106	5
Birmingham, Ala.	235	3	Louisville, Ky.	119	2
Chicago, Ill.	403	3	Nashville, Tenn.	48	2
Cincinnati, Ohio	242	3	New Orleans, La.	578	4
Cleveland, Ohio	485	3	New York, N. Y.	901	4
Detroit, Mich.	507	3	Pittsburgh, Pa.	511	3
Knoxville, Tenn.	233	3	St. Louis, Mo.	350	3

Source: Delivery time only - Manning Motor Express, Inc., 1203 South Green Street; Glasgow, Kentucky 42141

Air

Nearest Commercial

Nashville Metropolitan Airport
 Location: Nashville, 48 miles south of Tompkinsville
 Runways: 3 paved
 Length: 4,025 feet, 7,700 feet and 8,000 feet
 Traffic Control: Approved instrument approach; Unicom
 Lighting: Beacon, runway
 Services: American, Braniff, Piedmont, Allegheny, Eastern, Ozark, Southern, Trans World, Delta, Air Taxi, Aerie Airlines; fuel: Exxon, Texaco, Shell, 80/87, 100/130, 115/145, and jet fuel, courtesy car, limousine, bus, taxi, car rentals, major repairs, restaurant, weather information, tie-downs, hangars, oxygen, charter, flight instruction, restrooms

Air Freight

Service: Freight carrying airlines provide regular service

Taxi - Tompkinsville has 2 cab companies, 24-hour service

Rental Services -

Tompkinsville

U-Haul

Car rental is available at car dealerships

POWER AND FUEL

Electricity

Company serving Tompkinsville, Gamaliel and Monroe County -
Tri-County Electric Membership Corporation
Source of power - Tennessee Valley Authority
Total generating capacity - 19,400,000 KW

For industrial rates contact:

Tri-County Electric Membership Corporation
Tompkinsville, Kentucky

Natural Gas

Company serving Tompkinsville - Tompkinsville Gas Company
Source of supply - Texas Eastern Transmission Corporation
Size of transmission mains - 30-inch (supplier); 4 1/2, 3 1/2 and
2 3/8 inches (distributor)
Distribution mains - Range from 4 1/2 to 3/4 inches
Distribution pressure - 40 psi
Btu content - 1,020+ per cubic foot
Specific gravity - .59
For rates and supplies contact: Tompkinsville Gas Company;
Tompkinsville, Kentucky

Gamaliel does not have natural gas service.

Other Fuels

Propane and butane -

Tompkinsville

Doxol - Tompkinsville
Licken's Bottle Gas - Tompkinsville
Pargas - Scottsville
Petrolane - Marrowbone

Gamaliel

Doxol - Tompkinsville
Ugite - Horse Cave
Petrolane - Boiling Springs, Tennessee

Fuel Oils -

Distillate fuel oil -

Tompkinsville

Texaco Oil Company - Tompkinsville
Travis Oil Company - Tompkinsville
Standard Oil Company - Tompkinsville

Gamaliel

Texaco Oil Company - Tompkinsville
Travis Oil Company - Tompkinsville
Standard Oil Company - Tompkinsville
DX Oil Company - Scottsville
Gulf Oil Company - Glasgow
Spur - Nashville, Tennessee
Union 76 - Lafayette, Tennessee

Residual fuel oil - Arrangements must be made with the refinery.

Low sulphur content coal - Available from eastern Kentucky

WATER AND SEWERAGE

Water

Company serving Tompkinsville - Tompkinsville Water Company*

Source - Mill Creek Water Shed

Treatment plant capacity - 1,000,000 gpd

Average daily consumption - 300,000 gallons

Peak daily consumption - 400,000 gallons

Type treatment - Complete flocculation, clarification, filtration, fluoridation, and disinfection

Storage capacity - 296,000 gallons

Size lines - 12, 8 and 6 inches

Average pressure - 110 psi

MONTHLY WATER RATES FOR WHOLESALE AND INDUSTRIAL CONSUMERS

First	2,000 gallons	\$5.70 (Minimum bill)
Next	3,000 gallons	1.50 per 1,000 gallons
Next	5,000 gallons	1.15 per 1,000 gallons
Next	15,000 gallons	0.90 per 1,000 gallons
Next	75,000 gallons	0.70 per 1,000 gallons
Next	100,000 gallons	0.55 per 1,000 gallons
Over	200,000 gallons	0.35 per 1,000 gallons

Tap-on fee - \$65.00

Company serving Gamaliel - Gamaliel Water Works

Source - Lion Creek

Treatment plant capacity - 120,000 gpd

Average daily consumption - 60,000 gallons

Peak daily consumption - 75,000 gallons

Type treatment - filter, alum, lime, chlorine

Storage capacity - 182,000 gallons

Size lines - 8, 6, 4 and 2 inches

Average pressure - 72 psi

*Planned improvements include 5 miles of new lines and a 500,000-gallon storage tank.

MONTHLY WATER RATES FOR WHOLESALE
AND INDUSTRIAL CONSUMERS

First	2,000 gallons	\$5.00 (Minimum)
Next	1,000 gallons	1.50 per 1,000 gallons
Next	1,000 gallons	1.25 per 1,000 gallons
Next	1,000 gallons	1.00 per 1,000 gallons
Next	1,000 gallons	.75 per 1,000 gallons
All over	6,000 gallons	.50 per 1,000 gallons

Surface water sources - Barren and Cumberland Rivers

Average discharge - Barren River near Finney, Kentucky; 1,374 cfs
(20-year record USGS)

Expected ground water yield - 5 to 50 gpm in belts running north-
south in central and western portions of the county; 5 gpm or
less in the remainder of the county

Sewerage

Company serving Tompkinsville - Tompkinsville Sewerage Company*

Design capacity - 500,000 gpd

Average daily flow - 25,000 gallons; Treatment - primary and secondary

Type treatment - Pre-chlorination, aeration, drying beds

Treated effluent discharged into - Curtis Branch

Size of sanitary mains - 12, 8, 6, and 4 inches; Size of storm mains -
4, 3, and 2 foot mains

Rates - 80 percent of monthly water bill

Tap-on fee - \$65.00

Gamaliel is utilizing septic tanks for sewerage disposal at this time.

*Plans for the Tompkinsville Sewerage Company include a new lift station
and extension of service to one hundred homes.

LOCAL GOVERNMENT

City

Tompkinsville

Structure - Mayor - 4-year term; 6 councilmen - 2-year terms

Budget 1973-74 - General Fund \$146,972

Water and Sewer Fund 156,044

City Gas System 127,909

Fees and licenses - Occupational licenses range from \$5 to \$150 per year; automobile stickers - \$5 per year

Gamaliel

Structure - Chairman of the Board - 2-year term; 5 members - 2-year terms

Budget 1973-74 - General Fund \$36,500

Water Fund 27,254

Fees and licenses - Occupational licenses - \$25 per year; city payroll tax one percent of gross wages and one percent of profit

County

Structure - County Judge - 4-year term; 5 magistrates - 4-year terms

Budget 1973-74 - General Fund \$80,866; Road Fund \$41,750

Assessed Value of Property, 1973

<u>Classes of Property</u>	<u>Tompkinsville</u>	<u>Gamaliel</u>	<u>Monroe County</u>
Real Estate and Tangibles	\$14,240,144	\$2,204,396	
Real Estate			\$37,701,501
Tangibles			9,442,974
Public Service			19,709,809

Property Taxes

Land and buildings are taxed by the state and may be taxed by local jurisdictions. The state rate is \$0.015 per \$100 of assessed valuation.

Tangible personal property owned by manufacturers (automobiles, trucks, finished goods, office furniture, office equipment) is taxed by the state at \$0.15 per \$100 and may be taxed by local jurisdictions.

Manufacturing machinery, raw materials inventories, and goods in process inventories are not subject to local taxation. The state rate is \$0.15 per \$100.

Property stored in public warehouses is not subject to local taxation. The state rate is only \$0.015 per \$100.

All property is assessed at 100 percent of fair cash value.

Local Property Tax Rate Per \$100 of Assessed Valuation, 1973*

<u>Taxing Jurisdiction</u>	<u>Tompkinsville</u>	<u>Gamaliel</u>	<u>Monroe County</u>
County	\$.195	\$.195	\$.195
School	.502	.502	.502
City	.210	.200	

Utilities Gross Receipts Tax for Schools

Monroe County levies a 3 percent tax on utilities receipts for schools. This tax is paid by all consumers of utilities. Exempted are receipts from utilities services that are resold and the receipts from the sale of energy or energy producing fuels that exceed 3 percent of the cost of production in manufacturing, processing, mining or refining.

Planning and Zoning

A joint Planning and Zoning agency is now being formed.

Safety

<u>Police</u>	<u>Tompkinsville</u>	<u>Gamaliel</u>	<u>Monroe County</u>
Total staff	7	2 full-time 1 part-time	5
Radio-patrol cars	2	1	2
Other equipment	Standard	Standard	Standard

*Kentucky Department of Revenue, Kentucky Property Tax Rates, 1973.

<u>Fire</u>	<u>Tompkinsville</u>	<u>Gamaliel</u>	<u>Monroe County</u>
American Insurance Association Fire			
Rating	8	7	
Volunteers	20	24	
Equipment:			
1,000 gpm pumper	1		City trucks go
750 gpm pumper		1	into the county
600 gpm pumper		1	
500 gpm pumper	1		
Other		1 tank truck with a 1,200- gallon capacity and a 300 gpm pump	

Rescue Service

Monroe County Civil Defense Rescue Squad:

Number of volunteers - 20

Equipment - Boats, dragging equipment, first aid supplies, basic rescue gear, with the majority of the remaining equipment coming from the fire department

Personnel training - First aid and fire fighting

Sanitation

	<u>Tompkinsville</u>	<u>Gamaliel</u>
Type service	Private	Municipal
Fee charged:		
residential	\$2 monthly	Free
business	\$8 monthly	\$10 monthly
Collection frequency:		
residential	Weekly	Twice weekly
business	Twice weekly	Twice weekly
Trash pickup	Weekly	Twice weekly
Disposal method	Landfill	Landfill

EDUCATION

Public Schools

	<u>Monroe County</u>
Total Enrollment (1973)	2,734
Elementary	1,544
High School	1,190
Student-Teacher Ratio	21 - 1
Elementary	21 - 1
High School	21 - 1
Percent High School Graduates to College	23.8
Expenditures Per Pupil (1972-73)	\$535.61
Bonded Indebtedness, June 30, 1973	\$1,897,000

Vocational Schools

Nearest State School

Location	Bowling Green State Vocational-Technical School	
Miles Distant	Bowling Green	
	63 miles from Tompkinsville	
Curriculum	Marketing & Distributive Education	
	Dental Assistant	Auto Body Repair
	Dental Technician	Auto Mechanics
	Health Careers	Carpentry
	Nurse Aide	Commercial Foods
	Practical Nursing	Drafting
	Surgical Technician	Electricity
	Ward Clerk	Machine Shop
	Electronics (Technology)	Printing
	Highway Technology	Radio & TV Repair
	Technical Drafting	Tool & Die Making
	Air Conditioning & Refrigeration	Welding

Nearest Area Education Center

	Monroe County Area Vocational Education Center	
Location	Tompkinsville	
Curriculum	Accounting Jr. Management	
	Clerical	Carpentry
	Secretarial	Drafting
	Auto Mechanics	Electricity

Arrangements can be made to provide training in the specific production skills required by an industrial plant. Instruction may be conducted either in the vocational school or in the industrial plant, depending upon the desired arrangement and the availability of special equipment.

Colleges and Universities

<u>Name</u>	<u>Area - Within 65 miles</u>		<u>Highest Degree Conferred</u>
	<u>Location</u>	<u>Enrollment (Fall, 1973)</u>	
Lindsey Wilson Junior College	Columbia	269	Associate
Campbellsville College	Campbellsville	693	Baccalaureate
Western Kentucky University	Bowling Green	11,749	Masters
Tennessee Tech University	Cooksville, Tennessee	6,607*	Ph. D.
Belmont College	Nashville, Tennessee	930*	A. B. , B. S. , A. A.
David Lipscomb College	Nashville, Tennessee	2,061*	B. A. , B. S.
Fisk University	Nashville, Tennessee	1,558	A. B. , B. S. , B. M. , M. A.
George Peabody College for Teachers	Nashville, Tennessee	1,959*	Ph. D.
Meharry Medical College	Nashville, Tennessee	622*	M. A. , M. D. , D. D. S. , Cert.
Scarritt College for Christ Work	Nashville, Tennessee	142*	B. A. , M. A. , M. C. W.
Trevecca Nazarene College	Nashville, Tennessee	766*	A. B. , B. S.
Tennessee State University	Nashville, Tennessee	4,640	Masters
Vanderbilt University	Nashville, Tennessee	6,895	Ph. D.

*1972 enrollment.

HEALTH

Hospitals

<u>General Hospital</u>	<u>Location</u>	<u>Beds</u>
Monroe County War Memorial Hospital	Tompkinsville	49

General hospital facilities - New X-ray equipment, emergency room, operating room, delivery room, laboratory

Medical staff - 4 medical doctors, 1 surgeon, 6 registered nurses (full time), 1 registered nurse (part time), 6 licensed practical nurses (full time), 1 licensed practical nurse (part time), 1 pathologist, 1 radiologist, 3 associate radiologists, 2 associate cardiologists

Nursing Homes

	<u>Number</u>	<u>Beds</u>
Extended care home	1	60

Public Health

Facility - Monroe County Health Department

Staff - 1 registered nurse, 1 sanitarian, 1 clerk

Budget 1973-74 - \$32,067

OTHER LOCAL FACILITIES

Communications

	<u>Tompkinsville</u>	<u>Gamaliel</u>
Telephone -	General Telephone	South Central Rural
Services -	Company Standard	Telephone Cooperative Standard
Telegraph -	Western Union	Western Union
Services -	Served by Glasgow	Served by Glasgow
Postal - U.S. Post Office		
Class -	Second	Third
Mail received -	Twice daily	Once daily
Mail dispatched -	Twice daily	Once daily
Newspapers -	Tompkinsville News	
Weekly and circulation -	2,500	
Other papers		
received from -	Louisville and Glas- gow, Kentucky; Nashville, Tennessee	Tompkinsville, Louisville and Glasgow, Kentucky; Nashville, Tennessee
Radio -	WTKY - AM-FM	
Stations received from-	Louisville, Glasgow, and Bowling Green, Kentucky; Nashville, Tennessee	Tompkinsville, Louisville, Glasgow, and Bowling Green, Kentucky; Nashville, Tennessee
Television -		
Cable service -	Yes	No
Reception from -	Louisville and Bowling Green, Kentucky; Nashville, Tennessee	Bowling Green, Kentucky; Nashville, Tennessee
Educational		
Television -	Bowling Green - Channel 53	Nashville, Tennessee - Channel 8

Library Services

Public library - William B. Harlan Memorial Library

Size collection - 21,700 volumes

Circulation, 1973-74 - 47,000; bookmobile - 23,000

Services - Magazines, newspapers; pamphlets, records, record player, art, story hour for day care center, 4 talking book machines for the blind, films, projector, movie screens, copying machine, cassette players, sport equipment, bookmobile

Religious Institutions

	<u>Tompkinsville</u>	<u>Gamaliel</u>
Number of churches -	8	3
Denominations -	Baptist	Baptist
	Catholic	Church of Christ
	Church of Christ	Methodist
	Church of First Born	
	Church of Today	
	Latter Day Saints	
	Methodist	
Nearest Synagogues -	Nashville, 48 miles from Tompkinsville	
Congregations -	Sherith Israel (orthodox)	
	Ohabai Shalom (reform)	
	West End Synagogue (conservative)	

Financial Institutions

<u>Banks</u>	<u>Statement as of December 31, 1973</u>	
	<u>Assets</u>	<u>Deposits</u>
Peoples Bank of Tompkinsville	\$ 7,849,915	\$ 7,038,692
Deposit Bank of Monroe County	12,822,333	11,518,358
Gamaliel Bank	9,702,586	8,916,175

Hotels and Motels

Total number - 2

Units - 30

Clubs and Organizations

Monroe County

Business and Civic - Chamber of Commerce, Junior Chamber of Commerce, Lions, Tompkinsville Industrial Foundation, Gamaliel Industrial Foundation

Fraternal - American Legion, VFW

Women's - Business and Professional Women's Club, Monroe County Homemakers Club

Youth - FFA, FHA, 4-H Club, Little League, Cub Scouts, Boy Scouts, Girl Scouts

Other - Fountain Run Community Club, Sportsman's Club, Monroe County Horsemen's Association

RECREATION

Local

	<u>Tompkinsville</u>	<u>Gamaliel</u>
Public Recreation Facilities		
Parks -	1	1
Playgrounds -	1	1
Swimming pool -	1	1
Tennis courts -		2
Baseball diamonds -	1	1
Football fields -	1	1
Private Recreation Facilities		
Country club -	1	
Golf course -	1	
Swimming pool -	1	
Movie theater -	1 drive-in	
Tourist Attractions		
Old Mulkey Meeting House State Shrine		
Cultural Events		
The colleges in the Monroe County area provide a wide variety of sporting and cultural events		

Area (Within 80 miles)

Barren River Lake State Resort Park
 Mammoth Cave National Park
 Lake Cumberland State Resort Park
 Green River Lake State Park
 Abraham Lincoln Birthplace National Historic Site
 Dale Hollow Lake
 Old Mulkey Meeting House State Shrine
 Pickett State Park in Tennessee
 Standing Stone State Park in Tennessee
 Cedars of Lebanon State Park in Tennessee

AGRICULTURE - NATURAL RESOURCES - CLIMATE

Agriculture*

	<u>Monroe County</u>	<u>Labor Market Area</u>
Total land area (acres)	213,760	1,125,568
Percent of area in farm land	79.5	83.8
Number of farms	1,444	8,681
Average size of farms (acres)	117.6	108.6
1969 value of all farm products	\$ 6,051,524	\$ 40,593,783
Value per farm	4,190	4,676
Total crop sales	1,970,408	16,613,544
Total livestock & livestock products	3,994,133	23,559,800
1972 agricultural production included:		
Burley tobacco (lbs.)	3,724,000	27,339,000
Corn for grain (bu.)**	695,600	4,143,800
Cattle and calves (number)**	31,900	189,000
Hogs and pigs (number)**	18,000	66,500
Milk production, 1971 (lbs.)	37,620,000	243,410,000

Natural Resources

Principal mineral resources	Limestone
Other mineral resources	Petroleum
Acres of commercial forest land	98,400
Most abundant tree species	Red oak, white oak, hickory, yellow poplar, sweetgum, ash, and beech

*U. S. Department of Commerce, Bureau of the Census, Census of Agriculture, 1969. U. S. Department of Agriculture and Kentucky Department of Agriculture, Kentucky Agricultural Statistics, 1972.

**Preliminary figures.

Climate*

Monroe County

Temperature

Annual mean (30-year record)	60.0 degrees
Average annual 1972	59.6 degrees
Record highest, July, 1966 (7-year record)	103.0 degrees
Record lowest, January, 1966 (7-year record)	- 6.0 degrees
Normal heating degree days (30-year record)	3,578
(Heating degree day totals are the sums of negative departures of average daily temperatures from 65 degrees F.)	

Precipitation

Mean annual total (30-year record)	45.14 inches
Mean annual snow and sleet (31-year record)	11.40 inches
Total precipitation 1972	54.41 inches
Mean number days precipitation(.01 inch or more) (31-year record)	118
Average number days thunderstorms (31-year record)	56

Prevailing winds (22-year record)

South

*U. S. Department of Commerce, Environmental Science Services Administration, Climatological Data, 1972. Station of record: Nashville, Tennessee.

HISTORY

Monroe County lies in the southcentral part of Kentucky, its southern boundary formed by the Tennessee state line. Its western portion is drained by the Barren River and the eastern portion by the Cumberland River. The land surface varies from level to rolling and hilly, and over 40 percent of its 334 square miles is forested. There are extensive limestone and oil deposits in the area.

The earliest settlers in Monroe County were Philip Mulkey and a group of Baptists from the Carolinas. They settled near present-day Tompkinsville and built a twelve-cornered log meeting house in 1798 known as Old Mulkey Meeting House, the oldest log meeting house in Kentucky. Important in this church's entwinement with Kentucky's religious history was the schism of the 1790's when Mulkey led a large portion of his Baptist congregation into the fold of the "Campbellites," forerunners of the Churches of Christ and Disciples of Christ. The Meeting House is now a state shrine in whose graveyard Hanna Boone, sister of Daniel Boone, is buried. Daniel Boone carved his initials on a Monroe County tree in 1777.

In 1820, Monroe became Kentucky's sixty-fifth county, taking its name from President James Monroe, then in his second term. Tompkinsville, the county seat, was named for then Vice President Daniel D. Tompkins, whose championing of common people's causes made him popular in Kentucky.

During the Civil War Monroe County suffered greatly as the site of many maneuvers, including the passage of General Braxton Bragg's entire army in 1862.

The population at the time of the county's founding was 4,952. Timber cutting was an important early industry, and logs were floated down the Cumberland River in great numbers to Nashville, Tennessee. By 1950 the population totaled 13,770, followed by a decline to 11,799 in 1960. The 1970 population was 11,642.

Agriculture accounted for 1,250 of the county's 4,350 employed in 1972. The principal products were corn, hay, tobacco, poultry, cattle and hogs. Manufacturing employment grew very rapidly during the past decade, increasing by 126 percent from 1963 to 1973 for a total of 1,067 manufacturing jobs. The greatest concentration of production is in the apparel industry. Largest among Monroe's firms are Monroe Manufacturing Company, Tompkinsville Manufacturing Company, and Key Manufacturing Company which produce clothing. Petroleum has also played an important part in the economy, with periodic booms producing large quantities of oil.

Among distinguished citizens from the county are U. S. Congressman Doctor Tim Lee Carter, and the president of Western Kentucky University, Dero Downing.