

1973

Industrial Resources: Montgomery County - Mount Sterling

Kentucky Library Research Collections
Western Kentucky University, spcol@wku.edu

Follow this and additional works at: https://digitalcommons.wku.edu/montgomery_cty



Part of the [Business Administration, Management, and Operations Commons](#), [Growth and Development Commons](#), and the [Infrastructure Commons](#)

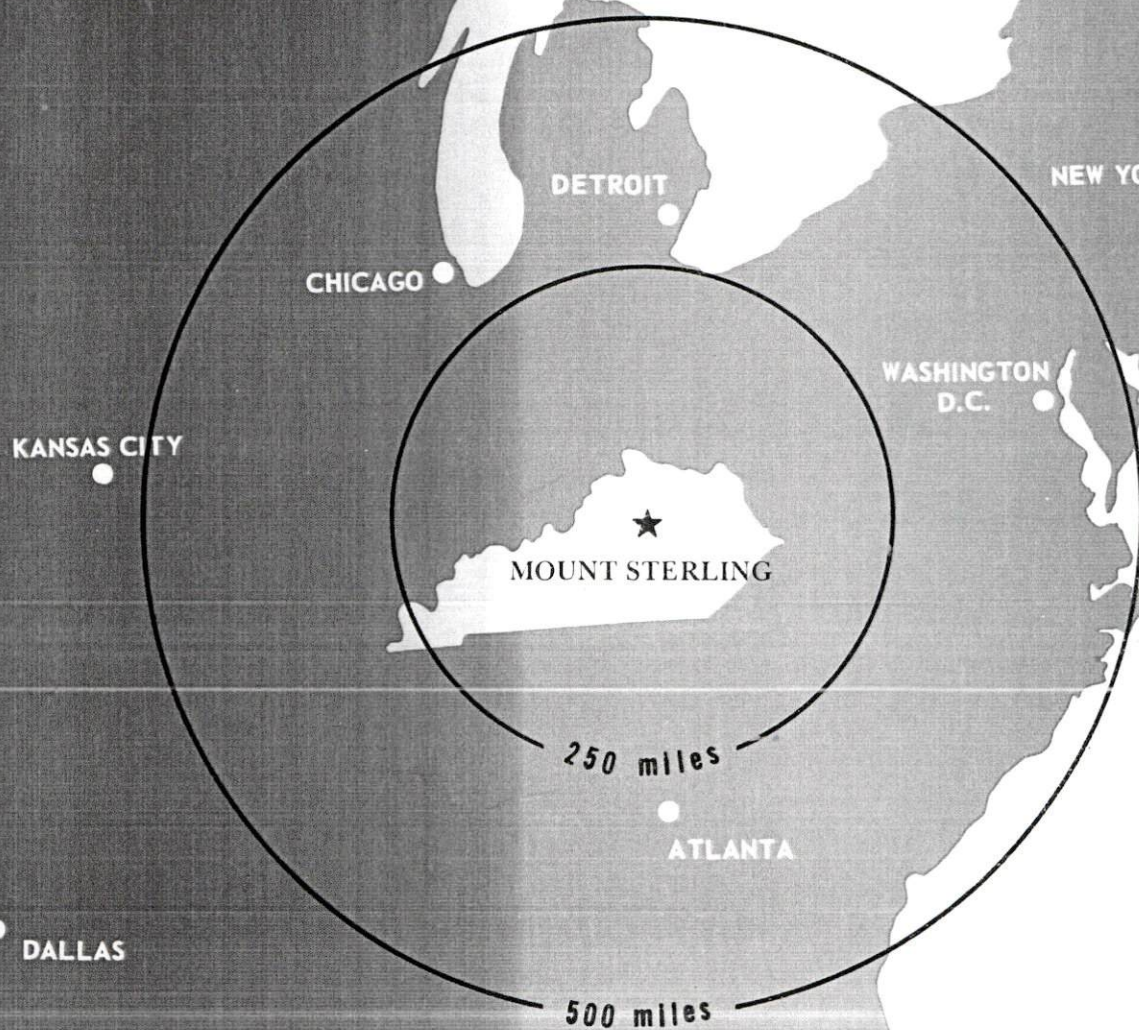
Recommended Citation

Kentucky Library Research Collections, "Industrial Resources: Montgomery County - Mount Sterling" (1973). *Montgomery County*. Paper 13.
https://digitalcommons.wku.edu/montgomery_cty/13

This Report is brought to you for free and open access by TopSCHOLAR®. It has been accepted for inclusion in Montgomery County by an authorized administrator of TopSCHOLAR®. For more information, please contact topscholar@wku.edu.

INDUSTRIAL RESOURCES

MOUNT STERLING KENTUCKY



MONTGOMERY COUNTY, KENTUCKY

MT. STERLING INDUSTRIAL SITES

1973

MT. STERLING INDUSTRIAL SITES

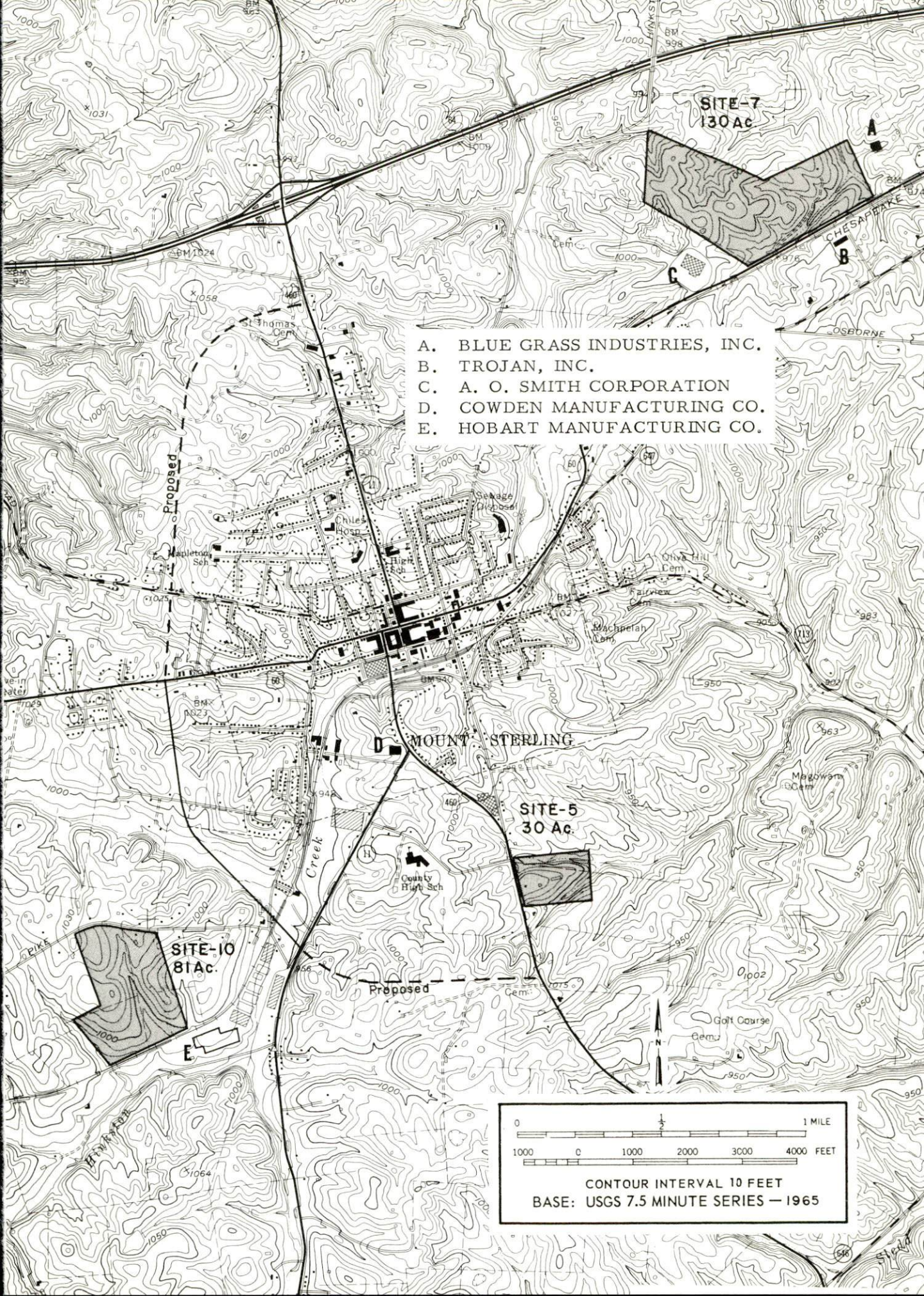
1973

For more information about the following sites, contact Jude Caswell Lane, Chairman, Industrial Committee, Mt. Sterling-Montgomery County Chamber of Commerce, Mt. Sterling, Kentucky; or the Kentucky Department of Commerce, Capital Plaza Office Tower, Frankfort, Kentucky.

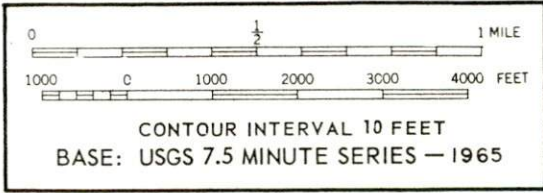
SITE #5: ACREAGE: 30 acres
LOCATION: At south city limits
ZONING: Agriculture
HIGHWAY ACCESS: Site fronts on U. S. 460
RAILROADS: Not rail served
WATER: Mt. Sterling Water Works
 SIZE LINE: 6-inch line 1,400 feet south of site;
 10-inch line 3,000 feet west of site along west
 side of Kentucky 11
GAS: Columbia Gas of Kentucky
 SIZE MAIN: 6-inch main on northwest corner of site
ELECTRICITY: Kentucky Utilities Company
SEWERAGE: Municipal Sewerage Service
 SIZE LINE: 10-inch line 1,700 feet from northwest
 corner of site; 8-inch line across U. S. 460 from
 northwest corner of site
OWNERSHIP: Private

SITE #7: ACREAGE: 130 acres
LOCATION: 1.3 miles northeast of city limits
ZONING: Industrial
HIGHWAY ACCESS: Site fronts on U. S. 60
RAILROADS: The Chessie System adjacent to southern
 boundary of site; along south side of U. S. 60
WATER: Mt. Sterling Water Works
 SIZE LINE: 10-inch line on site at southeast boundary
GAS: Columbia Gas of Kentucky
 SIZE MAIN: 8-inch main adjacent to southern boundary
 of site along south side of U. S. 60
ELECTRICITY: Kentucky Utilities Company
SEWERAGE: Municipal Sewerage Service
 SIZE LINE: 18-inch line along southern boundary of site
OWNERSHIP: Private

SITE #10: ACREAGE: 81 acres
LOCATION: Six-tenths of a mile southwest of city limits
ZONING: Industrial
HIGHWAY ACCESS: Site fronts on Fogg Pike; 1.4 mile from
 U. S. 60
RAILROADS: The Chessie System along entire southern boundary
WATER: Mt. Sterling Water Works
 SIZE LINE: 10-inch line 1,050 feet southeast of site
GAS: Columbia Gas of Kentucky
 SIZE MAIN: 4-inch main adjacent to northern boundary of
 site on north side of Fogg Pike
ELECTRICITY: Kentucky Utilities Company
SEWERAGE: Municipal Sewerage Service
 SIZE LINE: 12-inch line 1,250 feet from southeast corner of site
OPTIONED BY: Mt. Sterling-Montgomery County Industrial
 Foundation



- A. BLUE GRASS INDUSTRIES, INC.
- B. TROJAN, INC.
- C. A. O. SMITH CORPORATION
- D. COWDEN MANUFACTURING CO.
- E. HOBART MANUFACTURING CO.



INDUSTRIAL RESOURCES
MT. STERLING, KENTUCKY

Prepared by
The Kentucky Department of Commerce
in cooperation with
The Mt. Sterling-Montgomery County Chamber of Commerce

1973

This copy has been prepared by the Kentucky Department of Commerce,
Division of Research and Planning, and the cost of printing paid from
state funds.

TABLE OF CONTENTS

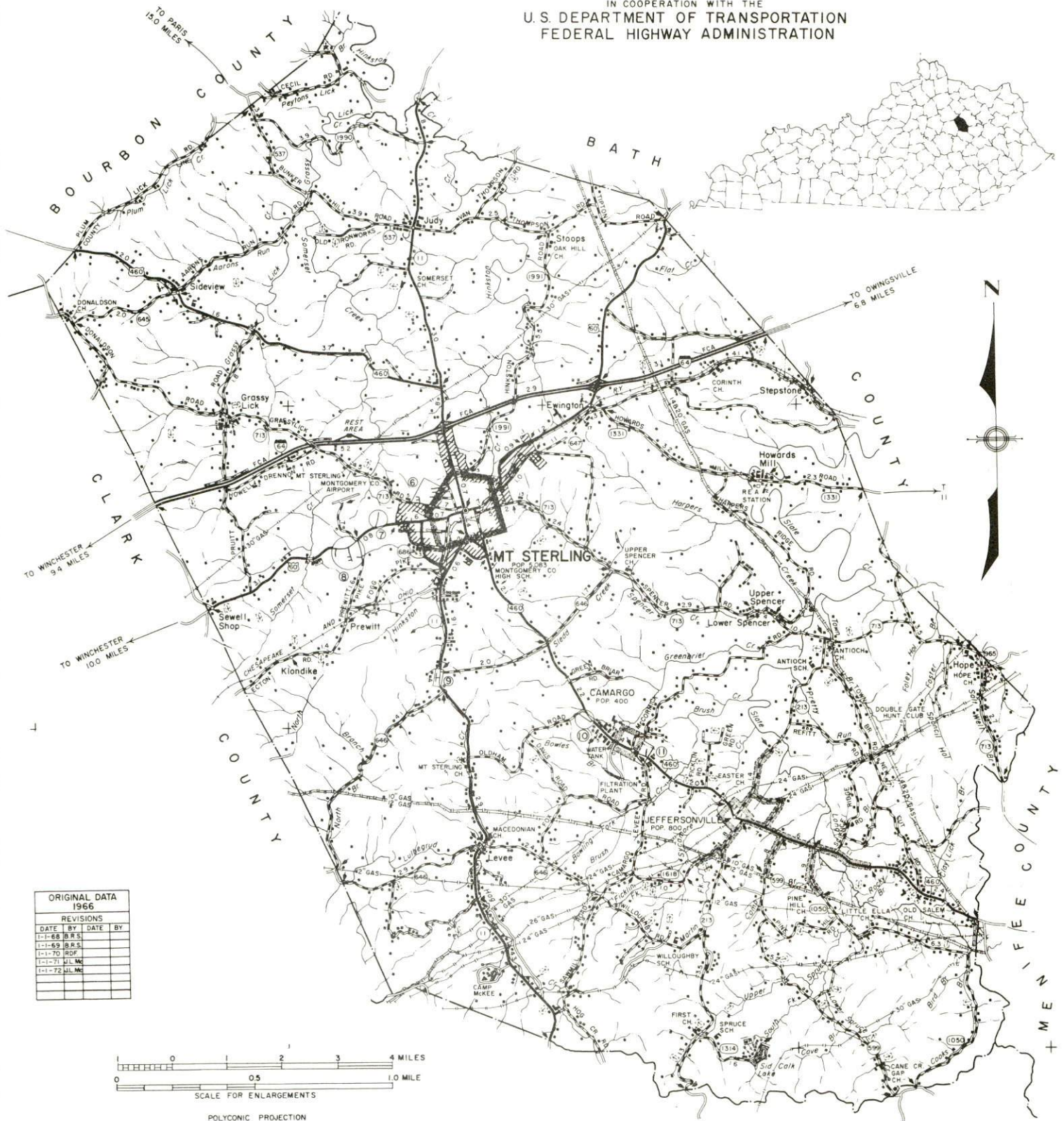
<u>Chapter</u>	<u>Page</u>
INDUSTRIAL SITES	i
MT. STERLING, KENTUCKY - A RESOURCE PROFILE	1
THE LABOR MARKET	5
Population Trends.	5
General Employment Characteristics, 1971	5
Manufacturing Employment Trends by Industry	5
Major Mt. Sterling Manufacturing Firms, Their Products and Employment	6
Wages	6
Labor Organizations.	6
Current and Future Labor Supply	10
Total Personal Income.	10
Per Capita Personal Income	10
TRANSPORTATION	11
Rail	11
Truck Service	11
Air	12
Bus	12
Taxi	12
Rental Services	12
POWER AND FUEL	13
Electricity	13
Natural Gas	13
Other Fuels	13
WATER AND SEWERAGE.	14
Water	14
Sewerage.	15

<u>Chapter</u>	<u>Page</u>
LOCAL GOVERNMENT	16
City	16
County	16
Assessed Value of Property, 1972	16
Local General Property Tax Rates Per \$100 of	
Assessed Valuation, 1972	16
Planning and Zoning	17
Safety	17
Police	17
Fire	17
Sanitation	17
EDUCATION	18
Public Schools	18
Vocational Schools	18
Colleges and Universities	19
HEALTH	20
Hospitals	20
Nursing Homes	20
Public Health	20
OTHER LOCAL FACILITIES	21
Communications	21
Library Services	21
Religious Institutions	21
Financial Institutions	22
Hotels and Motels	22
Clubs and Organizations	22
RECREATION	23
Local	23
Area	23
AGRICULTURE - NATURAL RESOURCES - CLIMATE	25
Agriculture	25
Natural Resources	25
Climate	25
HISTORY	26

GENERAL HIGHWAY MAP MONTGOMERY COUNTY KENTUCKY

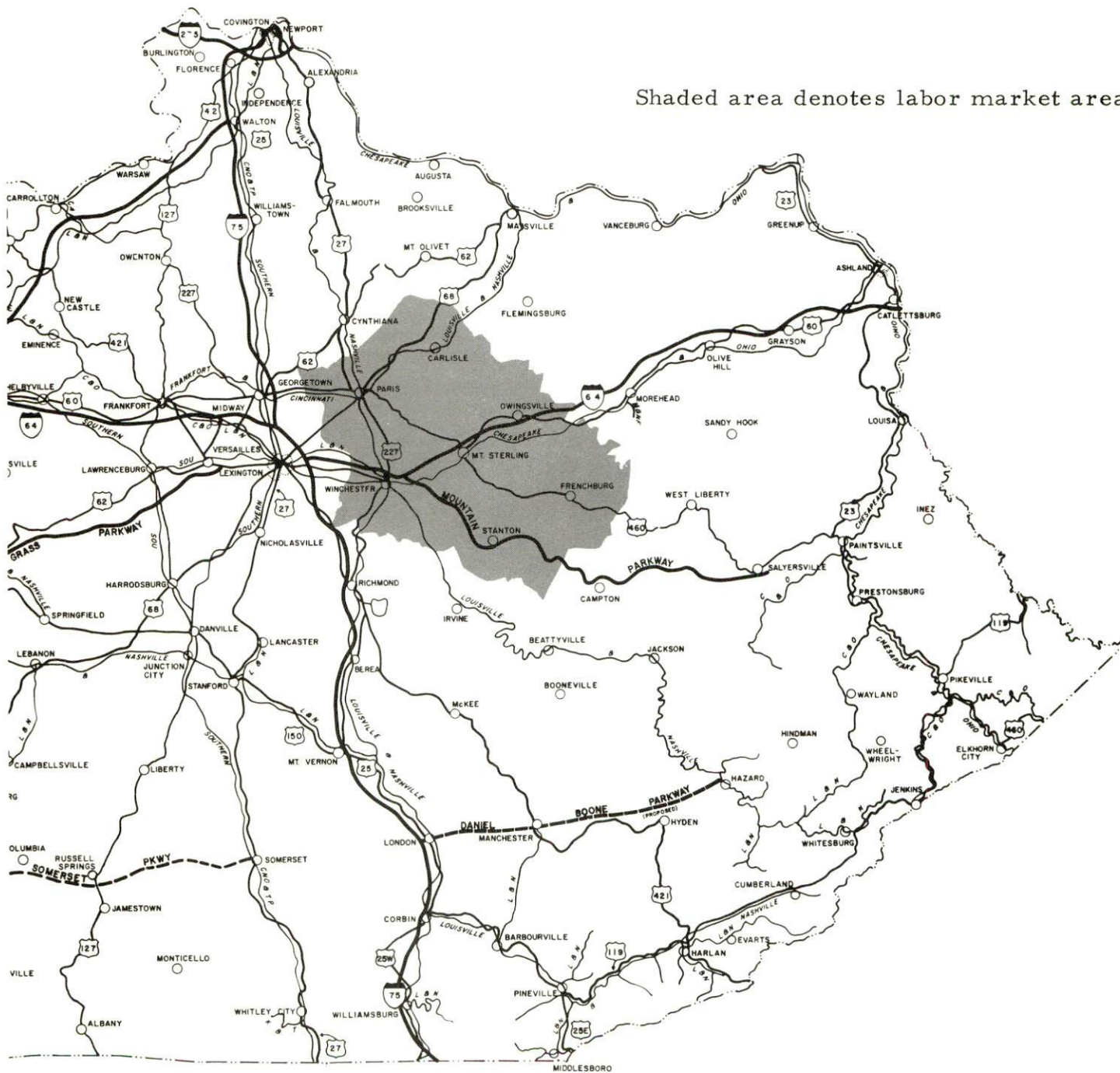
PREPARED BY THE
KENTUCKY DEPARTMENT OF HIGHWAYS
DIVISION OF PLANNING

IN COOPERATION WITH THE
U. S. DEPARTMENT OF TRANSPORTATION
FEDERAL HIGHWAY ADMINISTRATION



MT. STERLING LABOR MARKET AREA

Shaded area denotes labor market area



MT. STERLING, KENTUCKY - A RESOURCE PROFILE

Mt. Sterling, a 1972 All Kentucky City, serves as the county seat of Montgomery County and is located on the eastern edge of Kentucky's Bluegrass Region, 111 miles southeast of Louisville, Kentucky, and 114 miles southeast of Cincinnati, Ohio. Mt. Sterling had a 1970 population of 5,083 and Montgomery County had a population of 15,364.

The Economic Framework

Total employment in Montgomery County averaged 7,120 in 1971, with manufacturing providing 2,340 of these jobs, trade and services 1,415 jobs, agriculture 930 jobs, and government 520 jobs. Since 1962, manufacturing employment has increased by 1,492 new jobs, or 209 percent. Major industrial products are men's garments, home dishwashers, and hermetic and appliance motors.

Per capita income in the county in 1970 was \$2,903, a 139 percent increase since 1960. Total personal income for the county has increased by over 167 percent since 1960.

Mt. Sterling is the hub of a labor market area that includes Montgomery and the six adjoining counties. Area employment in 1971 averaged 30,660 jobs. Manufacturing provides 7,460 jobs. Area manufacturing employment has increased by more than 134 percent, or 4,407 jobs, since 1962, with the sharpest gains in the apparel, machinery, and equipment industries.

Resources for Growth

1. There is a current labor supply of 6,035 men and 6,450 women available for industrial jobs in the labor market area. In addition, 4,450 young men and 4,135 young women will become 18 years of age by 1978 and potentially available for work.

2. The local transportation capability is good. The Chessie System provides rail service to Mt. Sterling. The town is within 2 miles of an interchange to I-64 and 31 miles east of Interstate 75, major highway arteries into the industrial south, midwest and east. The nearest commercial air service is at Lexington, 31 miles distant. The Mt. Sterling-Montgomery County Airport provides the area with light aircraft service.

3. Mt. Sterling is served by Columbia Gas of Kentucky, Inc. There are five distributors of distillate fuel oil, and an adequate supply of propane is available. Electricity is provided to Mt. Sterling by the Kentucky Utilities Company; Montgomery County is served by Clark Rural Electric Cooperative Corporation.

4. There are three sites at Mt. Sterling available for industrial use. The sites range in size from 30 to 130 acres.

5. Education - Two school systems operate in Montgomery County - Mt. Sterling Independent School District and Montgomery County School System. Within 50 miles of Mt. Sterling there are four universities, one senior college, and two junior colleges. An area vocational education center, offering seven courses, is located in Mt. Sterling. A state vocational-technical school, offering nineteen courses, is located in Lexington, only 31 miles from Mt. Sterling.

Community Programs for Improvement

1. Fifteen subdivisions are in various stages of development with building lots available in twelve of the subdivisions.
2. County-wide zoning will be completed in 1973.
3. A new shopping center which will house five or six businesses, is being constructed.
4. A new shopping center, with three businesses already located and space for more to locate, is under construction.
5. The entire area between the north city limits and Interstate 64 is to be annexed.
6. A new 750 gpm pumper is being purchased for the fire department. Radio facilities are to be improved.
7. Plans are underway to improve Queens Street. This will relieve traffic congestion from Main Street to Kentucky 460 south.
8. Two new city parking lots have been completed, accommodating a total of 275 cars.
9. Sixty units of low-cost housing will be constructed. A site for the project has been selected.
10. Fifteen new businesses have located in Mt. Sterling within the last two years.
11. Several businesses are improving their facilities.
12. Four new neighborhood recreational parks are in the planning stages.

13. A by-pass connecting Kentucky 11 south and U. S. 60 west has been completed. Plans are now underway for a 1.3-mile extension of the by-pass from Kentucky 11 south to U. S. 460 south, and a 2.5 mile extension from U. S. 60 west to U. S. 460 north.
14. The Montgomery County School System has recently completed the following improvements: Crowning of the football field with three feet of top soil and construction of a practice field, extensive paving of parking areas and roadways, and a new rubberized track around the football field. Improvements underway include: New \$1,186,000 junior high school, a new baseball field and \$110,000 dressing room facilities for all sports.

Recreation, Entertainment and Livability

There are numerous facilities for local recreation in Mt. Sterling. The Montgomery County Recreation Park, the American Legion Park, and the Mt. Sterling Golf and Country Club provide various activities.

Court Day is an annual event in Mt. Sterling and attracts thousands. This event marks the opening of the fall term of court, with swapping of everything from household goods and hound dogs to Barlow knives and tall tales. It takes place the third Monday of October.

Several outstanding recreational areas are within convenient driving distance of Mt. Sterling. Fort Boonesborough State Park is located 13 miles from Mt. Sterling at Boonesboro, on the Kentucky River. There are 80 campsites equipped with water and electricity; laundry, swimming, fishing, dock, tables and the park is open all year.

Also within convenient driving distance is the Daniel Boone National Forest which covers 460,000 acres of timberland in eastern Kentucky. It is really a vacation paradise. There are scenic hiking trails, rivers and creeks stocked with rainbow trout, special hunting preserves, and many camping and fishing facilities.

Carter Caves State Resort Park, also nearby, has the American Folk Song Festival the second weekend in June each year at the natural amphitheatre. This park is located 37 miles from Mt. Sterling, and has a 28-room lodge with dining room, coffee shop and gift shop and is open from April 1 to November 1.

Located 45 miles from Mt. Sterling is the Blue Licks Battlefield State Park. This park is open from April 1 to November 1 with free primitive camping areas and features an 80-foot Olympic pool, bathhouse, hiking trails, picnic shelter, playground, rest rooms, swimming and fishing.

Another lovely park located within 55 miles is Natural Bridge Resort Park, open all year. The lodge has 35 rooms, with dining room and gift shop; swimming pool, fishing, boats, paddle boats and many other recreational sports.

Cave Run Reservoir is located within 30 miles of Mt. Sterling. The earth and random fill dam is 140 feet high and 2,700 feet long. A muskie hatchery is located below the reservoir and there are plans for a fishing and recreation area.

Another point of interest, White Hall State Shrine, is located 42 miles from Mt. Sterling. It is the restored Italianate mansion of Cassius Clay, an early abolitionist considered responsible for making Lincoln the Presidential nominee in 1860.

THE LABOR MARKET

POPULATION TRENDS ^{1/}

Area	Population			Percent Change	
	1970	1960	1950	1960-70	1950-60
Mt. Sterling	5,083	5,370	5,294	- 5.3	+ 1.4
Labor Market Area	85,427	79,455	79,227	+ 7.5	+ 0.3
Montgomery County	15,364	13,461	13,025	+14.1	+ 3.3
Bath County	9,235	9,114	10,410	+ 1.3	-12.4
Bourbon County	18,476	18,178	17,752	+ 1.6	+ 2.4
Clark County	24,090	21,075	18,898	+14.3	+11.5
Menifee County	4,050	4,276	4,798	- 5.3	-10.9
Nicholas County	6,508	6,677	7,532	- 2.5	-11.4
Powell County	7,704	6,674	6,812	+15.4	- 2.0

GENERAL EMPLOYMENT CHARACTERISTICS, 1971 ^{2/}

Major Employment Group	Employment	
	Montgomery County	Labor Market Area
TOTAL	7,120	30,660
Agricultural	930	5,830
Nonagricultural	6,190	24,830
Manufacturing	2,340	7,457
Government	520	3,940
Trade and Services	1,414	5,459

MANUFACTURING EMPLOYMENT TRENDS BY INDUSTRY MARCH 1972 AND 1962 ^{3/}

Industry	Montgomery County			Labor Market Area		
	1972	1962	% Change	1972	1962	% Change
TOTAL	2,203	711	+ 209.8	7,681	3,274	+134.6
Food & Kindred Products	36	142	- 74.6	88	166	- 47.0
Tobacco	4	5	- 20.0	6	120	- 95.0
Apparel, Textiles, Leather	801	436	+ 83.7	2,627	1,561	+ 68.3
Lumber, Furniture	1	14	- 92.9	583	297	+ 96.3
Printing, Publishing, Paper	17	9	+ 88.9	107	75	+ 42.7
Chemicals, Petroleum & Coal, Rubber	0	0	0	81	40	+102.5
Stone, Clay & Glass	38	75	- 49.3	110	117	- 6.0
Primary Metals	0	0	0	491	220	+123.2
Machinery, Metal Products, Equipment	1,306	30	+4253.3	3,573	576	+520.3
Other	0	0	0	15	102	- 85.3

MAJOR MT. STERLING MANUFACTURING FIRMS,
THEIR PRODUCTS AND EMPLOYMENT ^{4/}

<u>Firm</u>	<u>Product</u>	<u>Employment</u>		
		<u>Total</u>	<u>Male</u>	<u>Female</u>
Blue Grass Industries, Inc.	Men's woven shorts, knit garments	495	33	462
Clay Tobacco Co.	Tobacco redrying, prizing	60	50	10
Cowden Manufacturing Co.	Men's and boys' jeans, jackets	355	35	320
The Hobart Manufacturing Co.	Home dishwashers	620	540	80
A. O. Smith Corporation	Hermetic and appliance motors	800	550	250
Trojan, Inc.	Helical armor, bedding, electro-mechanical sub-assembly	156	70	86

WAGES

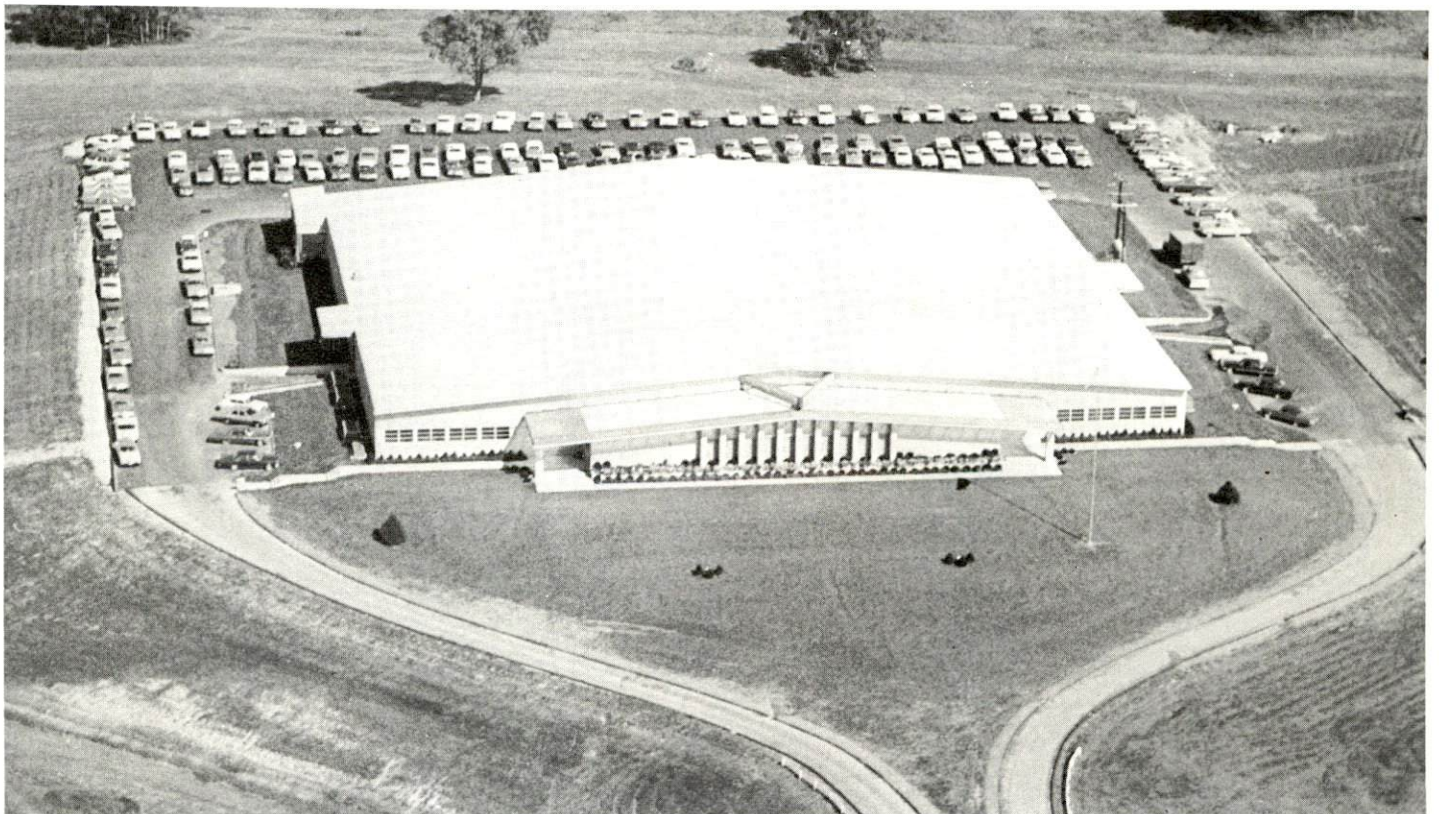
Wage information will be provided upon request by the Kentucky
Department of Commerce, Division of Research and Planning.

LABOR ORGANIZATIONS

<u>Union</u>	<u>Representing Manufacturing Workers at:</u>
International Brotherhood of Teamsters, Chauffeurs, Ware- housemen and Helpers of America	Cowden Manufacturing Company
International Union, United Automobile, Aerospace and Agricultural Implement Workers of America	Hobart Manufacturing Company
International Brotherhood of Electrical Workers, AFL-CIO	A. O. Smith Company



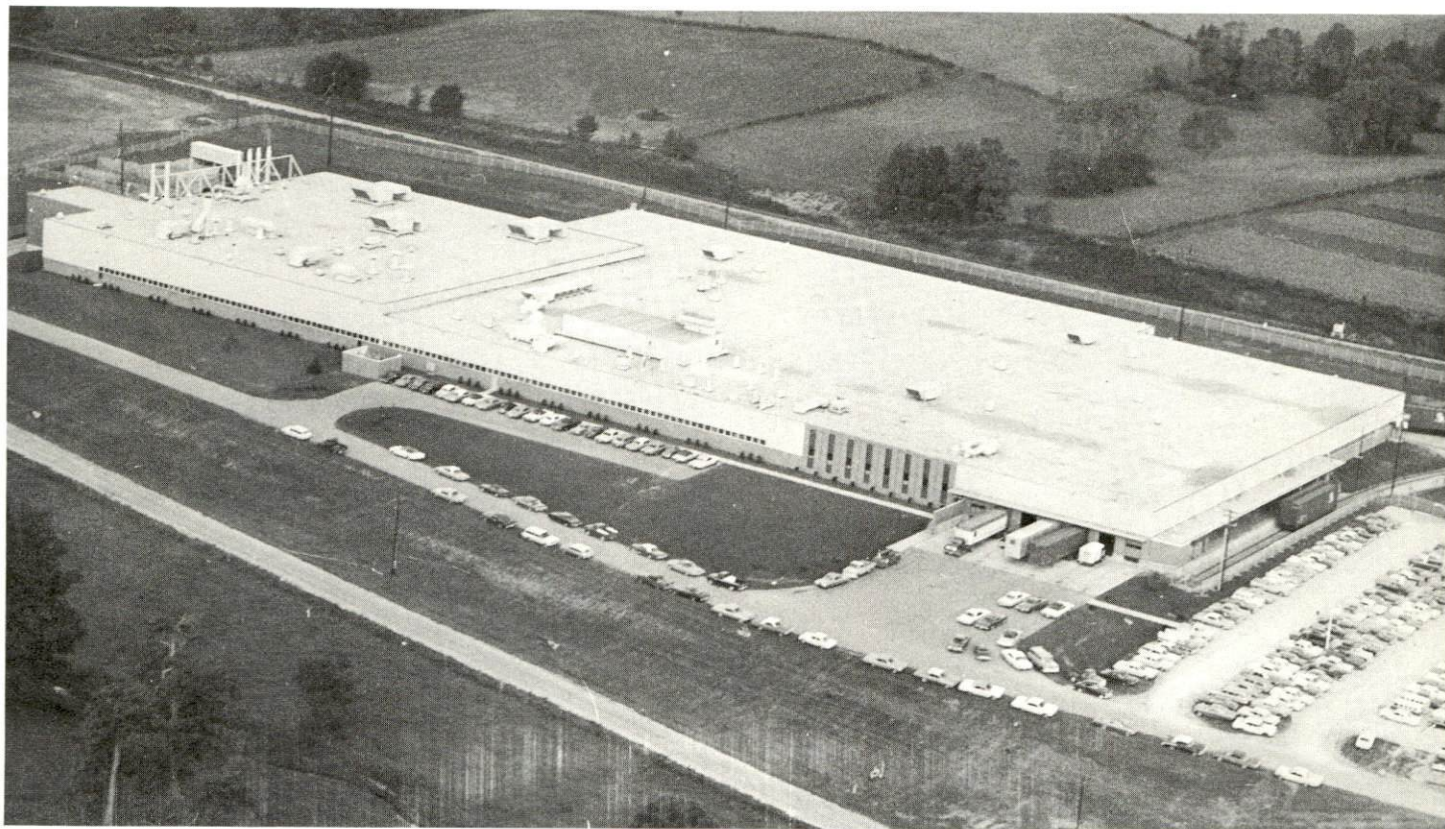
TROJAN, INC.



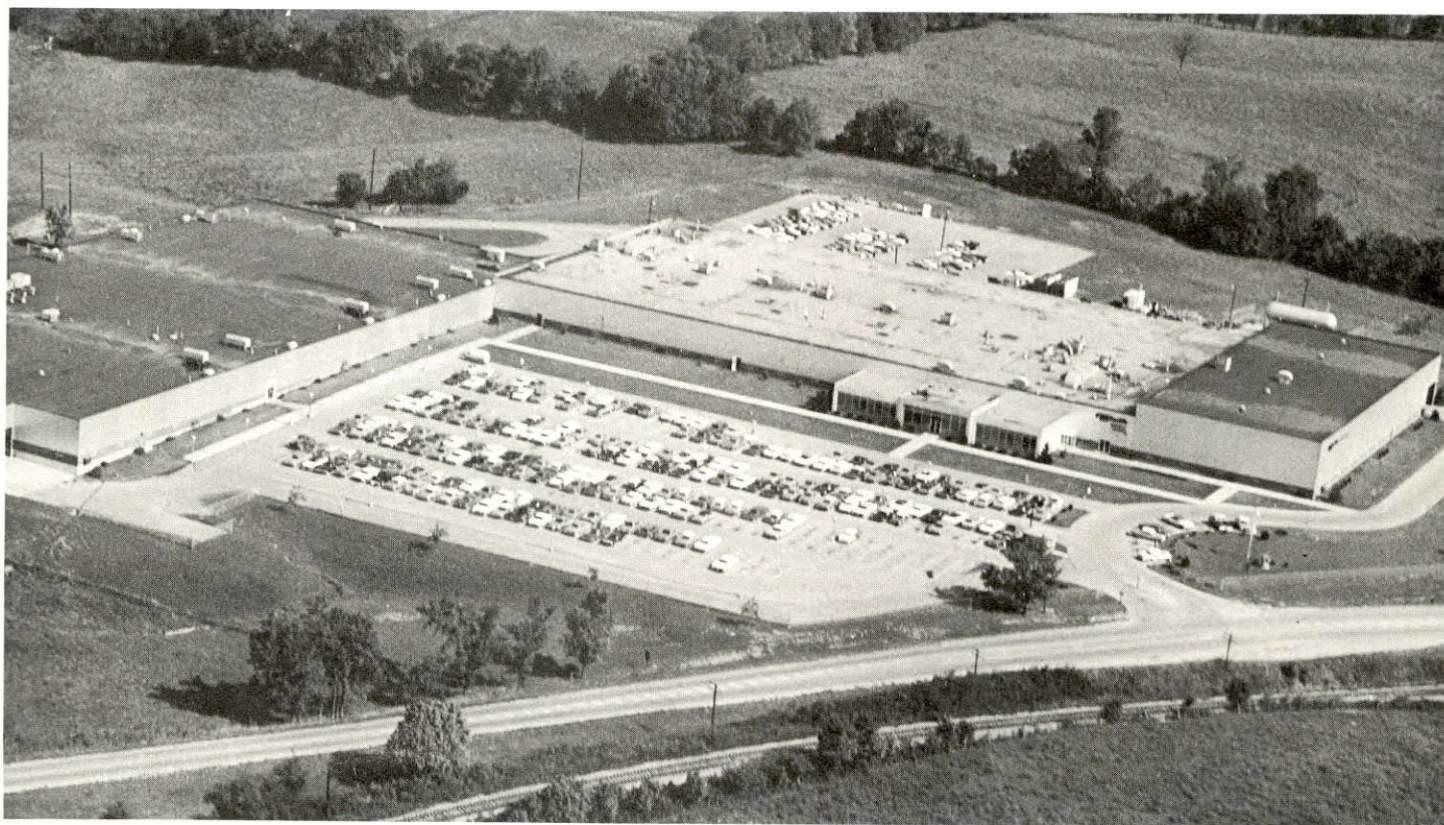
BLUE GRASS INDUSTRIES



COWDEN MANUFACTURING COMPANY



HOBART MANUFACTURING COMPANY



A. O. SMITH CORPORATION

CURRENT AND FUTURE LABOR SUPPLY -
MT. STERLING LABOR MARKET AREA

<u>Area</u>	<u>Current Labor Supply, 1972 ^{5/}</u>			<u>Future Labor Supply by 1978 ^{6/}</u> <u>(Becoming 18 Years of Age)</u>		
	<u>Total</u>	<u>Male</u>	<u>Female</u>	<u>Total</u>	<u>Male</u>	<u>Female</u>
Labor Market						
Area	12,486	6,035	6,451	8,585	4,451	4,134
Montgomery County	2,298	1,349	949	1,596	834	762
Bath County	2,184	1,124	1,060	927	485	442
Bourbon County	1,973	891	1,082	1,819	944	875
Clark County	2,866	992	1,874	2,297	1,158	1,139
Menifee County	1,044	648	396	446	247	199
Nicholas County	609	322	287	630	335	295
Powell County	1,512	709	803	870	448	422

TOTAL PERSONAL INCOME ^{7/}

<u>Area</u>	<u>1970</u>	<u>1960</u>	<u>% Change</u>
Montgomery County	\$ 43,732,000	\$ 16,339,000	+167.7
Labor Market Area	233,445,000	109,701,000	+103.7
Kentucky	9,719,647,000	4,779,695,000	+103.4

PER CAPITA PERSONAL INCOME ^{8/}

<u>Area</u>	<u>1970*</u>	<u>1960</u>	<u>% Change</u>
Montgomery County	\$2,903	\$1,214	+139.1
Labor Market Area Range	\$1,375 to 3,497	\$612 to 1,752	N. A.
Kentucky	3,019	1,573	+ 91.9

*Unadjusted for commuting.

TRANSPORTATION

Rail

Line serving Mt. Sterling - The Chessie System

Services - Freight service twice a day, one east bound, one west bound;
3 sidings for 12 cars; switching facilities; piggyback facilities at
Lexington, 31 miles distant, and at Russell, 100 miles distant.

For details on routing, schedules, rates, and services, contact:

General Manager
Freight Service
The Chessie System
603 B & O Building
2 North Charles Street
Baltimore, Maryland 21201

Truck Service

<u>Company</u>	<u>Home Office</u>
Cooper-Jarrett, Inc.	Orange, New Jersey
Ecklar-Moore Express, Inc.	Lexington, Kentucky
McLean Trucking Company	Winston-Salem, North Carolina
Point Express, Inc.	Charleston, West Virginia

HIGHWAY MILES AND TRUCK TRANSIT TIME IN DAYS FROM MT. STERLING, KENTUCKY, TO SELECTED MARKET CENTERS

City	Highway Miles	Delivery Time ^{9/}		City	Highway Miles	Delivery Time	
		LTL	TL			LTL	TL
Atlanta, Ga.	397	3	2	Los Angeles, Calif.	2,218	6	5
Birmingham, Ala.	457	3	2	Louisville, Ky.	111	overnight	
Chicago, Ill.	410	2	1	Nashville, Tenn.	240	2	1
Cincinnati, Ohio	114	overnight		New Orleans, La.	812	3	2
Cleveland, Ohio	401	2	1	New York, N. Y.	649	3	2
Detroit, Mich.	388	2	1	Pittsburgh, Pa.	389	2	1
Knoxville, Tenn.	203	2	1	St. Louis, Mo.	375	2	1

Air

	<u>Local</u>	<u>Nearest Commercial</u>
	Mt. Sterling-Montgomery County Airport	Blue Grass Field
Location:	Mt. Sterling, Kentucky	Lexington, Kentucky, 31 miles from Mt. Sterling
Runways:	1 paved	3 paved
Length:	2,800 ft.	6,500 ft., 3,500 ft., 3,500 ft.
Traffic		
Control:	Wind sock	Tower, guards, approach control, ground control, ILS system
Lighting:	Sunset to sunrise, rotating beacon	Approach lighting system, beacon, runways and obstructions lighted
Services:	80 and 100 octane fuel, charter, flight instruc- tion, tie down, hangar	80, 100 and 145 octane; jet fuel; major A & E repairs; storage; restaurant; Weather Bureau; flight instruction; charter service; taxi; U-Drive-It service; Eastern, Delta, Piedmont, Allegheny Airlines

Bus

Southern Greyhound Bus Lines

Taxi

Three companies, 24-hour radio-dispatched service

Rental Services

Truck and trailer rental service is available in Mt. Sterling; car rental service is available in Lexington, only 31 miles away.

POWER AND FUEL

Electricity

Company serving Mt. Sterling - Kentucky Utilities Company

Source of power - Kentucky Utilities Company

Total generating capacity - 1,215,000 KW

Industrial rates furnished by - Kentucky Utilities Company, Industrial Development Department, Lexington, Kentucky 40501

Company serving Montgomery County - Clark Rural Electric Cooperative Corporation

Source of power - East Kentucky Power Cooperative

Total generating capacity - 548,000 KW

Industrial rates furnished by - Clark Rural Electric Cooperative Corporation, Winchester, Kentucky 40391

Natural Gas

Company serving Mt. Sterling - Columbia Gas of Kentucky, Inc.

Source of supply - Columbia Gas Transmission Company

Size of transmission mains - 12, 14, and 20 inches (supplier);
2 and 4 inches (distributor)

Distribution pressure - Low pressure 4-5 ounces; medium system
25-50 psi

Btu content - 1,050

Specific gravity - .60

Rates - Industrial rates will be furnished by Columbia Gas of Kentucky, Inc.,
Mt. Sterling, Kentucky

Other Fuels

Propane and butane - Amburgy Farm Supply

Fuel Oils

Distillate fuel oil - Standard, Ashland Oil, Shell, Gulf, Arco (all are bulk plants)

Residual fuel oil - arrangements must be made with the refinery.

Low sulphur content coal - available in eastern Kentucky.

WATER AND SEWERAGE

Water

Company serving Mt. Sterling - Mt. Sterling Water Works

Source - Slate Creek impoundment

Treatment plant capacity - 2,225,000 gpd

Average daily consumption - 1,207,647 gallons

Peak daily consumption - 2,311,500 gallons

Type treatment - Rapid sand filter with flash mix, flocculation, sedimentation, filtration

Storage capacity - 3,000,000 gallons

Size mains - 6, 8, 10, 12, and 16 inches

Average pressure - 80 psi

Average temperature - 53°F.

MONTHLY WATER RATES FOR WHOLESALE AND INDUSTRIAL CONSUMERS

First	100 cu. ft.	\$2.90 Minimum
Next	600 cu. ft.	.90 per 100 cu. ft.
Next	1,300 cu. ft.	.80 per 100 cu. ft.
Next	1,300 cu. ft.	.70 per 100 cu. ft.
Next	3,400 cu. ft.	.60 per 100 cu. ft.
Next	6,600 cu. ft.	.50 per 100 cu. ft.
Next	13,300 cu. ft.	.35 per 100 cu. ft.
Next	26,700 cu. ft.	.30 per 100 cu. ft.
All over	53,300 cu. ft.	.25 per 100 cu. ft.

Minimum Monthly Charges

5/8 or 3/4 inch meter	\$ 2.90
1 inch meter	3.50
1 1/4 or 1 1/2 inch meter	4.50
2 inch meter	5.50
3 inch meter	8.00
4 inch meter	12.00
6 inch meter	22.00

Surface water sources - South Fork of Licking River

Average discharge - 250 cfs (17-years, USGS); on Stoner Creek at Paris, Kentucky, Bourbon County, northwest of Montgomery County

Expected ground water yield - 5 gpm or less over entire county

Sewerage

Company serving Mt. Sterling - Mt. Sterling Sewerage Department

Design capacity - 1,400,000 gpd

Average daily flow - 1,100,000 gallons

Treatment - Primary and secondary

Type treatment - Clarifiers, drying beds, aeration

Treated effluent discharged into - Hinkston Creek

Size of sanitary mains - 3 to 8 inches

Size of storm mains - 36 inches

Rates - 35 percent of monthly water bill

LOCAL GOVERNMENT

City

Structure - Mayor - 4-year term; 8 councilmen - 2-year terms

Budget 1972-73 - General Fund \$370,000; Sewer Fund \$76,489

Fees and licenses - Business licenses differ for various businesses;

annual auto stickers - automobiles and trucks to and including 18,000 lbs.

gross weight - \$10; trucks over 18,000 lbs. to and including 24,000 lbs. -

\$20; trucks over 24,000 lbs. - \$30

County

Structure - County Judge - 4-year term; 3 commissioners - 4-year terms

Budget 1972-73 - General Fund \$116,727; Road Fund \$90,589

Assessed Value of Property, 1972

<u>Classes of Property*</u>	<u>Mt. Sterling</u>	<u>Montgomery County</u>
Real Estate	\$20,503,445	\$82,524,644
Tangibles	5,268,440	13,861,828
Public Service	2,435,094	18,967,687

Local General Property Tax Rates Per \$100 of Assessed Valuation, 1972 ^{10/}

<u>Taxing Unit**</u>	<u>Mt. Sterling</u>	<u>Montgomery County</u>
State	\$.015	\$.015
County	.156	.156
School	.731	.570
City	.219	
Total	\$1.121	\$.741

Special tax (not county-wide) - Carmargo Watershed - \$.235

*Property assessed at 100 percent of fair value.

**Manufacturing machinery, raw materials inventories and goods in process inventories are not subject to local tax. State rate is only \$.15 per \$100.

Planning and Zoning

Joint agency - Mt. Sterling-Montgomery County Planning Commission
Zoning enforced - Zoning is enforced within corporate limits now; county-wide planning is underway
Subdivisions regulations enforced - Within corporate limits and extending 3 miles beyond the city limits
Local codes enforced - Building (county-wide); Housing
Mandatory state codes enforced - Plumbing, National Fire Protection Association Code, National Building Code (for major buildings and residential construction containing more than 12 bedrooms per building)
Other programs - Public Housing

Safety

<u>Police</u>	<u>Mt. Sterling</u>	<u>Montgomery County</u>
Total staff	12	4
Radio-patrol cars	2	1
Other equipment	Radar equipment	Standard

Fire

American Insurance	
Association Fire Rating	7
Full-time staff	10
Volunteers	16
Equipment:	
1,000 gpm pumper	1
750 gpm pumper	1
500 gpm pumper	1
Other	respirator portable oxygen tank

Sanitation

	<u>Mt. Sterling</u>
Type service	Municipal
Fee charged:	
residential	\$2 per month
business	\$7.50 per month and up
Collection frequency:	
residential	Twice weekly
business	Six days a week
Trash pickup	
residential	Once a week
business	Six days a week
Disposal method	Sanitary landfill and dump

EDUCATION

Public Schools

	<u>Mt. Sterling Independent</u>	<u>Montgomery County</u>
Total Enrollment	1,021 (includes kindergarten)	2,787
Elementary	545	2,012
Junior High	176	
High School	300	775
Student-Teacher Ratio	23-1	22-1
Elementary	22-1	22-1
Junior High	22-1	
High School	18-1	20-1
State Rating of High School	Standard	Comprehensive
Other Accreditations	Southern Association of Colleges and Schools	
Percent High School Graduates to College	71.6	30.0
Expenditures Per Pupil	\$550.94	\$498.20
Bonded Indebtedness, June 30, 1972	\$262,000	\$2,228,000

Vocational Schools

	<u>Nearest State School</u>	<u>Nearest Area Education Center</u>
Location	Central Kentucky State Vocational Technical School	Montgomery County Extension Center
Miles Distant	Lexington, Kentucky 29	Mt. Sterling
Curriculum	Accounting Jr. Management Clerical Secretarial Marketing and Distributive Education Practical Nursing Learning Lab Electronics (Communications) Technical Drafting Auto Body Repair (cont.)	Accounting Jr. Management Clerical Secretarial Auto Mechanics Carpentry Drafting Electricity

Nearest State School (cont.)

Auto Mechanics
Commercial Foods
Cosmetology
Drafting
Electricity
Machine Shop
Office Machine Repair
Printing
Sheet Metal
Welding

Colleges and Universities

<u>Name</u>	<u>Area - Within 50 Miles</u>		<u>Highest Degree Conferred</u>
	<u>Location</u>	<u>Enrollment</u>	
University of Kentucky	Lexington	20,598	Ph. D., M.D., D.M.D., J.D.
Transylvania University	Lexington	726	Baccalaureate
Eastern Kentucky University	Richmond	10,505	Masters
Georgetown College	Georgetown	1,243	Masters
Midway Junior College	Midway	253	Associate
Southeastern Christian College	Winchester	130	Associate
Morehead State University	Morehead	6,255	Masters

HEALTH

Hospitals

<u>General Hospital</u>	<u>Location</u>	<u>Beds</u>
Mary Chiles Hospital	Mt. Sterling	44
General hospital facilities - X-ray room, laboratory department, emergency room, delivery room, operating room, recovery room		
Medical staff - 9 doctors (active staff), 15 registered nurses, 7 graduate licensed practical nurses, 69 nurses aides, 4 orderlies, consulting radiologist and pathologist, 1 surgeon, 1 anaesthesiologist, 1 consulting dietitian, 1 consulting pharmacist		

Nursing Homes

	<u>Number</u>	<u>Beds</u>
Extended care homes	1	40
Personal care homes	2	19

Public Health

Facility - The Montgomery County Health Department

Staff - Clerk, nurse, acting assistant administrator

Budget 1971-72 - \$28,569

OTHER LOCAL FACILITIES

Communications

Telephone - South Central Bell Telephone Company
Services - Standard

Telegraph - Western Union
Local office

Postal - U. S. Post Office
Class - First
Mail received - Three times daily
Mail dispatched - Three times daily

Newspapers - Mt. Sterling Advocate
Weekly and circulation - 5,300
Other papers received from - Lexington and Louisville, Kentucky

Radio - WMST-AM-FM
Stations received from - Lexington, Louisville, and Winchester, Kentucky;
Cincinnati, Ohio

Television -
Cable service -
Reception from - Lexington, Louisville, and Covington, Kentucky;
Cincinnati, Ohio
Kentucky Educational Television - Lexington and Richmond - Channel 46
Morehead - Channel 38

Library Services

Public library - Mt. Sterling Library
Size collection - 5,500 volumes
Circulation, 1972 - Approximately 15,500 volumes
Services - Books, magazines, records, art displays, provide space for
club meetings. Also have initiated a children's story hour for pre-
school children

Religious Institutions

Number of churches - 14
Denominations - Baptist, Catholic, Disciples of Christ, Church of Christ,
Church of God, Church of Nazarene, Episcopal, Methodist, Pentecostal,
Presbyterian
Nearest Synagogues - Lexington, 31 miles away - Adath Israel (Reform)
Ohavey Zion (Traditional)

Financial Institutions

<u>Bank</u>	<u>Statement as of June 30, 1972</u>	
	<u>Assets</u>	<u>Deposits</u>
The Exchange Bank of Kentucky	\$10,812,713	\$ 9,670,767
Montgomery National Bank	10,925,814	9,900,466
Mt. Sterling National Bank	13,643,449	12,219,216
Traders National Bank	13,226,943	11,854,221
<u>Savings and Loan Associations</u>	<u>Assets</u>	<u>Shared Accounts</u>
Mt. Sterling Federal Savings & Loan Association	\$ 7,312,729	\$ 6,897,575

Hotels and Motels

Total number - 5
Units - 85

Clubs and Organizations

Business and Civic - Chamber of Commerce, Jaycees, Kiwanis, Lions,
Rotary, Ministerial Association, Red Cross

Fraternal - American Legion, IOOF, Masonic Lodge, VFW, Knights of
Columbus

Women's - Woman's Club, DAR, Eastern Star, Homemakers, Garden
Club, Rebekah, Metropolitan Club, Women's Civic Club, American
Legion Auxiliary, Daughters of the Confederacy, Beta Sigma Phi,
Tuesday Club

Youth - Boy Scouts, Girl Scouts, Cub Scouts, Brownies, FFA, FHA,
4-H, Beta Club

RECREATION

Local

Public Recreation Facilities

Supervised program -

Park - 1

Playgrounds - 5

Swimming pool - 1

Tennis courts - 4

Baseball diamonds - 2

Football fields - 2

Private Recreation Facilities

Country club - 1

Golf course - 1

Swimming pool - 1

Movie theaters - 2 (drive-in)

Bowling lane - 1

Other - Sid Calk Lake, Inc.

Tourist Attractions

Mt. Sterling Court Day

Area (Within 60 miles)

Daniel Boone National Forest

Fort Boonesborough State Park

Carter Caves State Resort Park (American Folk Song Festival)

Blue Licks Battlefield State Park

Natural Bridge State Resort Park

Cave Run Reservoir

Whitehall State Shrine



MT. STERLING GOLF AND COUNTRY CLUB

AGRICULTURE - NATURAL RESOURCES - CLIMATE

Agriculture 11/

	<u>Montgomery County</u>	<u>Labor Market Area</u>
Total land area (acres)	130,560	1,047,680
Percent of area in farm land	95.0	78.1
Number of farms	1,037	6,015
Average size of farms (acres)	119.5	136.1
1969 value of all farm products	\$7,090,002	\$48,900,622
Value per farm	6,837	8,130
Total crop sales	3,798,864	24,844,723
Total livestock & livestock products	3,285,129	23,899,841
1970 agricultural production included:		
Burley tobacco (lbs.)	6,136,000	36,805,000
Corn (bu.)	182,000	1,681,000
Cattle and calves (number)	26,000	171,800
Hogs and pigs (number)	3,600	70,100
Milk production, 1969 (lbs.)	12,600,000	66,480,000*

Natural Resources

Principal mineral resources	Limestone
Acres of commercial forest land	18,500 (14 percent of land area)
Most abundant tree species	White oak, hickory, red oak, red cedar, ash, hard maple, soft maple

Climate 12/

	<u>Montgomery County</u>
Temperature	
Annual mean (30-year record)	55.6 degrees
Average annual 1971	55.6 degrees
Record highest, July, 1966** (8-year record)	98.0 degrees
Record lowest, January, 1966** (8-year record)	-10.0 degrees
Seasonal heating degree days (30-year record)	4,683
Precipitation	
Mean annual total (30-year record)	44.73 inches
Mean annual snow and sleet (27-year record)	16.50 inches
Total precipitation 1971	44.67 inches
Mean number days precipitation (.01 inch or more) (27-year record)	128
Average number days thunderstorms (27-year record)	47
Prevailing winds (17-year record)	South

*Does not include Powell County.

**Also on earlier dates, months and years.

HISTORY

Montgomery County lies on the eastern edge of Kentucky's Bluegrass Region, covering 204 square miles of territory. The county's rolling terrain makes it well-adapted for agriculture, and the soil is quite fertile. The area is well watered and drained, and there are large deposits of limestone.

The first settlers in the area included Enoch Smith, Abraham Hanks, Phillip Drake, Robert Whitledge, and William Calk. Smith built the first house and planted the first crop of corn in 1776. These men, and others who came in 1779, did not find it safe to bring their families to Kentucky until the late 1780's. The county's early history was a somewhat violent one, marked by such Indian conflicts as "Estill's Defeat" in 1782, in which a number of settlers were killed.

Montgomery became the state's twenty-second county in 1796 and was named for General Richard Montgomery of Revolutionary War fame, who lost his life at Quebec in 1775. Originally the county covered an extremely large portion of eastern Kentucky, but it gradually gave up territory to form eighteen other counties.

Mt. Sterling, the county seat, was established in 1792 and named for the town of Sterling, Scotland, and a large mound within the town limits called "Little Mountain." The mound, one of some twenty-five in the vicinity, was probably an Indian burial mound. The county courthouse here was burned during the Civil War, and after it was rebuilt a custom was started for holding "court days," a festival-like affair still held each October. A growing industrial center, Mt. Sterling had a population of over 5,000 in 1970.

In 1800, four years after its founding, Montgomery County had a population of 7,082. Fluctuations in subsequent years reflect the continual carving up of the county. By 1950 the population had reached 13,025, and by 1960, 13,461. During the 1960's, industrial growth accompanied a population increase to 15,364 in 1970.

In 1971 total employment in Montgomery County averaged 7,120, with manufacturing providing 2,340 of these jobs. Major manufacturers in Mt. Sterling are Blue Grass Industries, Inc., Clay Tobacco Co., Cowden Manufacturing Company, the Hobart Manufacturing Company, A. O. Smith Corporation and Trojan, Inc.

A major transportation artery, Interstate Highway 64 serves Mt. Sterling.

Among noted citizens in Montgomery County history are Albert Harrison and John Jameson, both of whom became U. S. Senators from Missouri. Richard Apperson, who founded the Lexington and Big Sandy Railroad and was advisor to Lincoln during the Civil War period, was a native of the county.

SOURCES OF INFORMATION

- 1/ U. S. Department of Commerce, Bureau of the Census, Census of Population, 1950, 1960, 1970.
- 2/ Kentucky Department of Economic Security, Division of Research and Statistics.
- 3/ Kentucky Department of Economic Security, Number of Workers in Manufacturing Industries Covered by Kentucky Unemployment Insurance Law Classified by Industry and County, March 1972, March 1962.
- 4/ Kentucky Department of Commerce, 1973 Kentucky Directory of Manufacturers.
- 5/ Kentucky Department of Economic Security, Kentucky Labor Supply Estimates by County, January 1972.
- 6/ Kentucky Department of Commerce, Future Labor Supply by 1978.
- 7/ University of Kentucky, Office of Development Services and Business Research, Total Personal Income for Kentucky.
- 8/ University of Kentucky, Office of Development Services and Business Research, Per Capita Income in Kentucky.
- 9/ Ecklar-Moore Express, Inc., Lexington, Kentucky 40505.
- 10/ Kentucky Department of Revenue.
- 11/ U. S. Department of Commerce, Bureau of the Census, Census of Agriculture, 1969. U. S. Department of Agriculture and Kentucky Department of Agriculture, Kentucky Agricultural Statistics, 1971.
- 12/ U. S. Department of Commerce, Environmental Science Services Administration, Climatological Data, 1971.

All other information was obtained from governmental offices, local businesses and organizations.