

1969

# Industrial Resources: Muhlenberg County

Kentucky Library Research Collections  
Western Kentucky University, [spcol@wku.edu](mailto:spcol@wku.edu)

Follow this and additional works at: [https://digitalcommons.wku.edu/muhlenberg\\_cty](https://digitalcommons.wku.edu/muhlenberg_cty)



Part of the [Business Administration, Management, and Operations Commons](#), [Growth and Development Commons](#), and the [Infrastructure Commons](#)

---

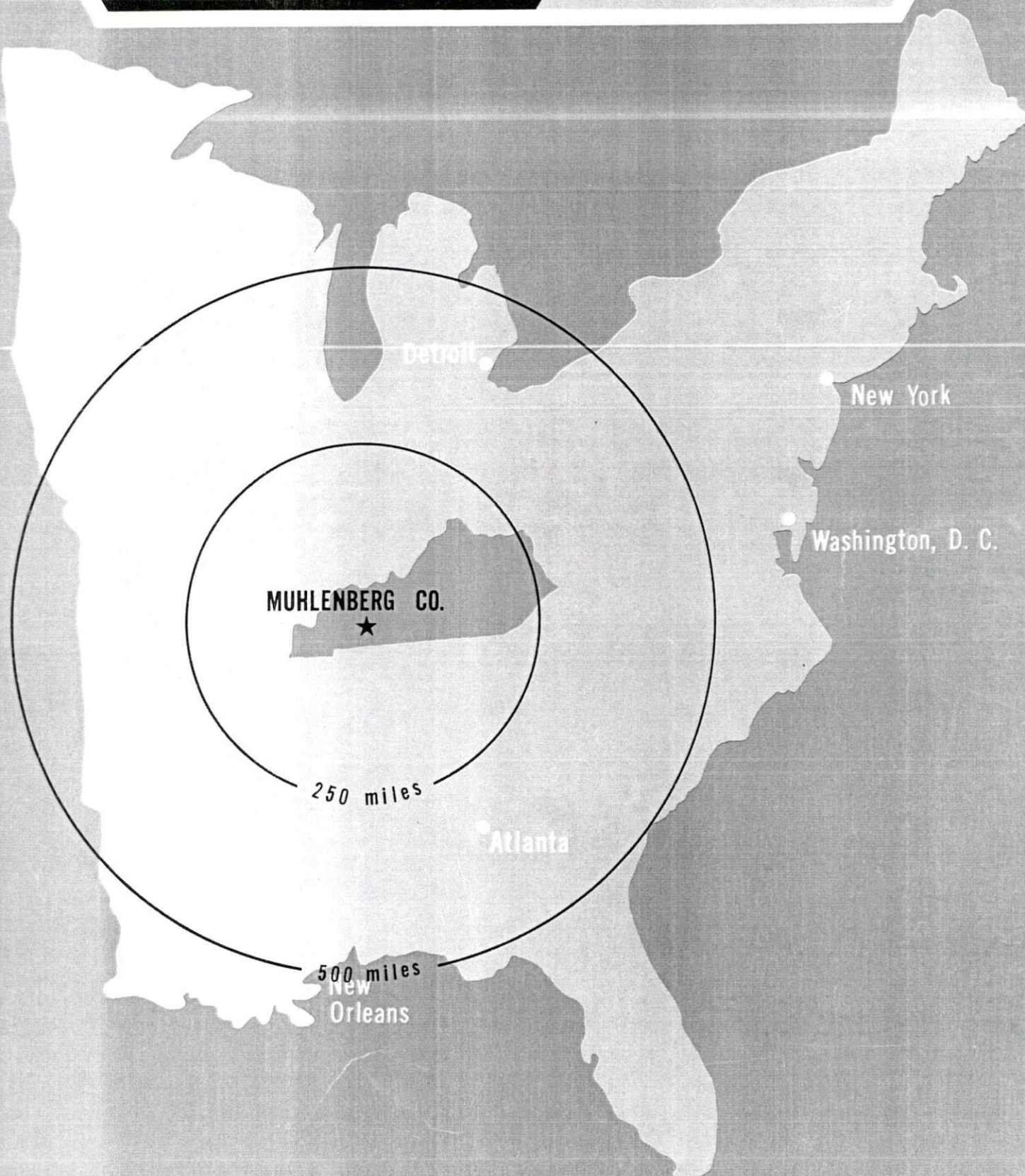
## Recommended Citation

Kentucky Library Research Collections, "Industrial Resources: Muhlenberg County" (1969). *Muhlenberg County*. Paper 16.  
[https://digitalcommons.wku.edu/muhlenberg\\_cty/16](https://digitalcommons.wku.edu/muhlenberg_cty/16)

This Report is brought to you for free and open access by TopSCHOLAR®. It has been accepted for inclusion in Muhlenberg County by an authorized administrator of TopSCHOLAR®. For more information, please contact [topscholar@wku.edu](mailto:topscholar@wku.edu).

# **INDUSTRIAL RESOURCES**

**MUHLENBERG  
COUNTY  
KENTUCKY**



CENTRAL CITY - DRAKESBORO  
INDUSTRIAL SITES

1969



## CENTRAL CITY INDUSTRIAL SITES

For more detailed information concerning the following sites, contact Mr. Joe Ben Tucker, President of the Central City Chamber of Commerce, or the Kentucky Department of Commerce, Frankfort, Kentucky.

SITE #1: ACREAGE AND TOPOGRAPHY: 30 acres, rolling  
LOCATION: North of the city - within city limits  
ZONING: Commercial  
HIGHWAY ACCESS: U. S. 431 North  
RAILROADS: Louisville & Nashville Railroad  
borders the site on the north  
WATER: Municipal Water & Sewer Commission  
SIZE LINE: 6-inch  
GAS: Western Gas Company  
SIZE LINE: 2-inch  
ELECTRICITY: Kentucky Utilities Company  
SEWERAGE: Sewerage facilities are presently  
not available to the site  
OPTIONED BY: Central City Chamber of Commerce

SITE #2: ACREAGE AND TOPOGRAPHY: 4 acres, level  
LOCATION: Within city limits  
ZONING: Commercial  
HIGHWAY ACCESS: Ellis Drive, city maintained  
street - 1 1/2 blocks from U. S. 431  
RAILROADS: Louisville & Nashville Railroad  
borders site on east  
WATER: Municipal Water & Sewer Commission  
SIZE LINE: 6-inch  
GAS: Western Kentucky Gas Company  
SIZE LINE: 2-inch  
ELECTRICITY: Kentucky Utilities Company  
SEWERAGE: Municipal Water & Sewer Commission  
OPTIONED BY: Central City Chamber of Commerce

SITE #3: ACREAGE AND TOPOGRAPHY: 1.5 acres, rolling  
LOCATION: South of the city - within city limits  
ZONING: Light industrial  
HIGHWAY ACCESS: U. S. 431 borders site on east  
RAILROADS: Louisville & Nashville Railroad  
WATER: Municipal Water & Sewer Commission  
SIZE LINE: 6-inch  
GAS: Western Kentucky Gas Company  
SIZE LINE: 2-inch  
ELECTRICITY: Kentucky Utilities Company  
SEWERAGE: Municipal Water & Sewer Commission  
OPTIONED BY: Central City Chamber of Commerce

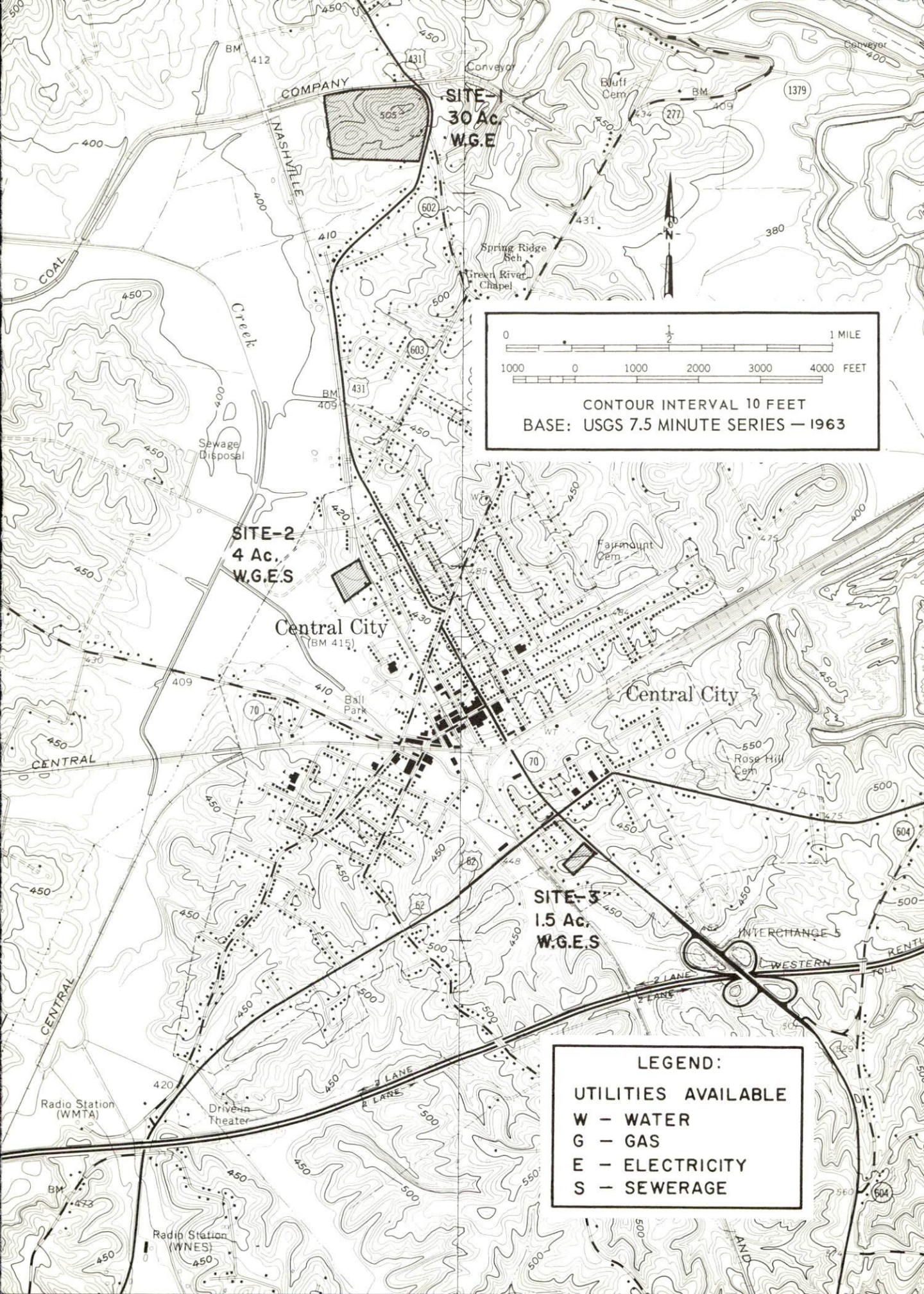
### DRAKESBORO SITE

SITE #4: ACREAGE AND TOPOGRAPHY: 500 acres, hilly  
LOCATION: Located approximately 10 miles  
southeast of Central City - 2,500 feet west of  
Green River with corridor right-of-way to  
river bank  
HIGHWAY ACCESS: Access to U. S. Highway 431  
and Kentucky Highways 70 and 176  
RAILROADS: Louisville & Nashville Railroad runs  
to property line of TVA plant, which is located  
approximately one-half mile from this site  
WATER: Muhlenberg County Water District  
GAS: Drakesboro Natural Gas System  
ELECTRICITY: Kentucky Utilities Company  
SEWERAGE: Sewerage facilities are not presently  
available to site  
OPTIONED BY: Central City Chamber of Commerce

## AVAILABLE INDUSTRIAL BUILDING

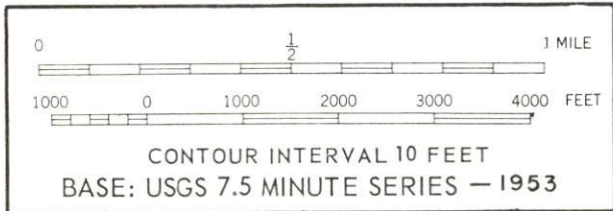
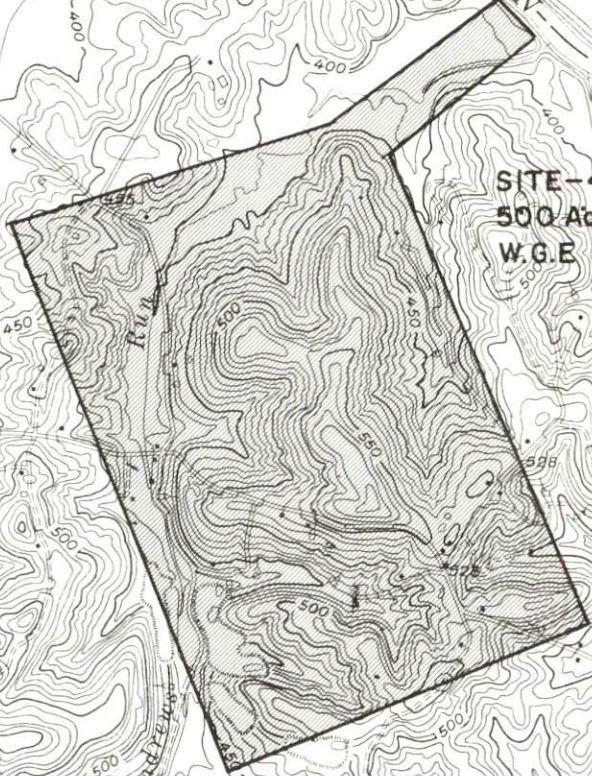
LOCATION: Center Street, within city limits of Central City  
TOTAL FLOOR SPACE: 22,712 square feet  
NO. OF FLOORS: One  
TYPE CONSTRUCTION: Brick  
OFFICE SPACE: Yes  
SPRINKLERED: No  
TYPE FLOOR: Concrete  
TRUCK LOADING DOCK: One ramp located at side of building  
ROADWAY ACCESS: U. S. 431  
ELECTRICITY: Kentucky Utilities Company  
GAS: Western Kentucky Gas Company  
WATER: Municipal Water & Sewer Commission  
SEWERAGE: Municipal Water & Sewer Commission  
OWNER: E. G. Benson  
REMARKS: Building is presently being used as a warehouse







LEGEND:  
UTILITIES AVAILABLE  
W - WATER  
G - GAS  
E - ELECTRICITY





GREENVILLE INDUSTRIAL SITE

1969



## GREENVILLE INDUSTRIAL SITE

For more detailed information concerning the following site, contact Mr. L. Wayne Cisney, President of the Greenville Industrial Development Corporation, Greenville, Kentucky, or the Kentucky Department of Commerce, Frankfort, Kentucky.

SITE #1: ACREAGE AND TOPOGRAPHY: 100 acres, level to  
gently rolling

LOCATION: Within city limits

RAILROADS: Illinois Central Railroad approximately  
400 feet from site

HIGHWAY ACCESS: Fronts on Greene Drive

WATER: Greenville Utilities Commission

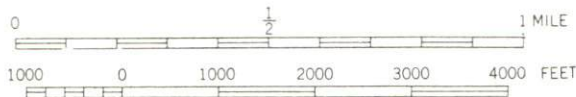
GAS: Western Kentucky Gas Company

ELECTRICITY: Kentucky Utilities Company

SEWERAGE: Greenville Utilities Commission

OWNED BY: Greenville Industrial Development  
Corporation

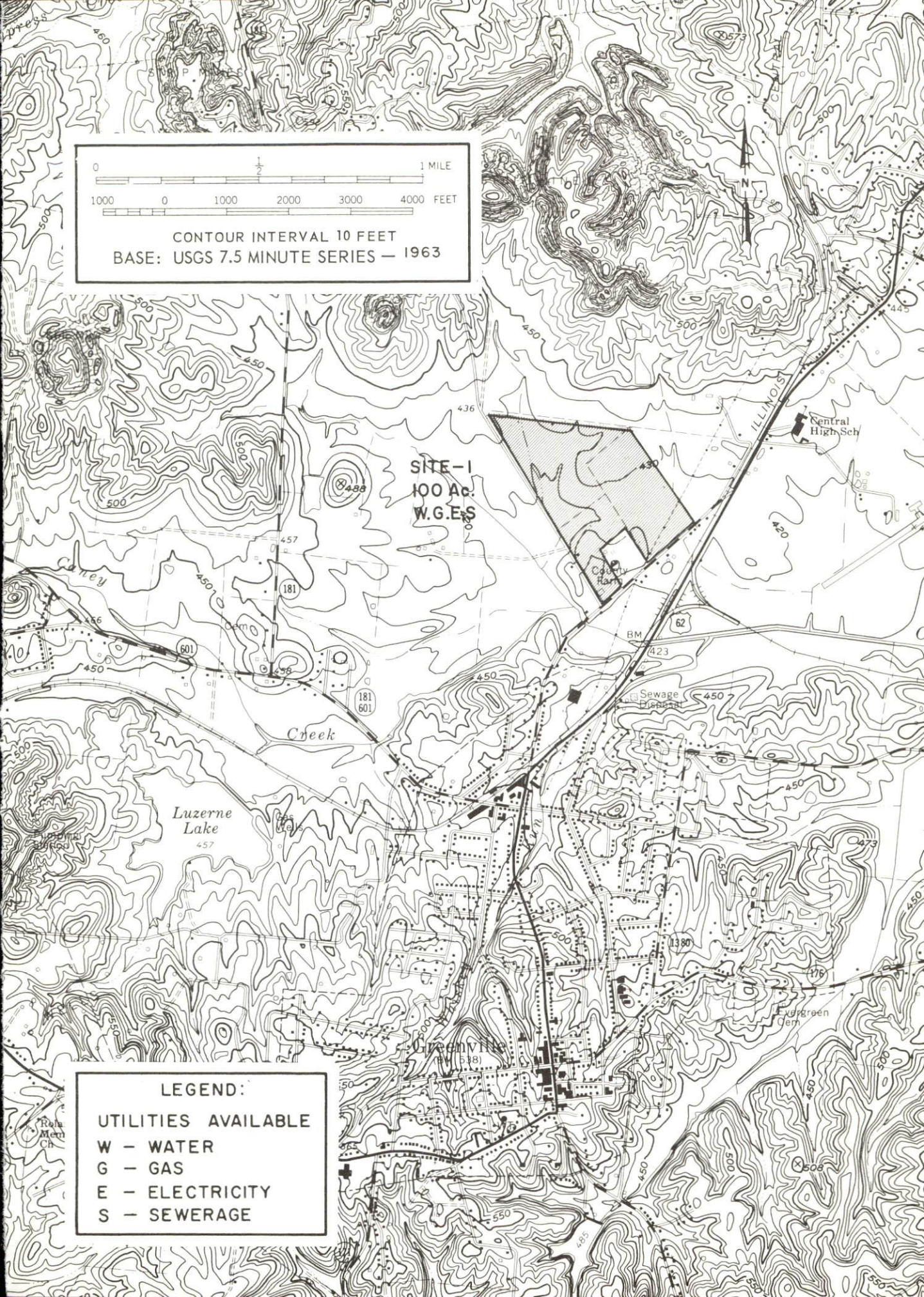




CONTOUR INTERVAL 10 FEET  
BASE: USGS 7.5 MINUTE SERIES — 1963

SITE-1  
100 Ac.  
W.G.E.S

LEGEND:  
UTILITIES AVAILABLE  
W — WATER  
G — GAS  
E — ELECTRICITY  
S — SEWERAGE





## AVAILABLE INDUSTRIAL BUILDING

LOCATION: Main Street, within the Greenville city limits

TOTAL FLOOR SPACE: 21,000 square feet

NUMBER OF FLOORS: One

TYPE CONSTRUCTION: Brick      YEAR BUILT: 1929

OFFICE SPACE: Two rooms

TYPE ROOF: Built up      HEIGHT OF ROOF: 15 feet

TYPE FLOOR: Concrete

HEATING: Gas      BUILDING VACATED: June 1969

RAILROAD SIDING & CAPACITY: Illinois Central Railroad - 3 cars,  
rail now at site

TRUCK LOADING DOCK: Yes

ROADWAY ACCESS: U. S. 62

ELECTRICITY: Kentucky Utilities Company

GAS: Western Kentucky Gas Company

WATER: Greenville Utilities Commission

SEWERAGE: Greenville Municipal Sewerage System

LEASE OR PURCHASE ARRANGEMENT: To be negotiated

OPTIONED BY: Greenville Industrial Development Corporation



INDUSTRIAL RESOURCES  
MUHLENBERG COUNTY, KENTUCKY

Prepared by  
The Kentucky Department of Commerce  
in cooperation with  
Central City Chamber of Commerce  
and  
Greenville Chamber of Commerce  
1969

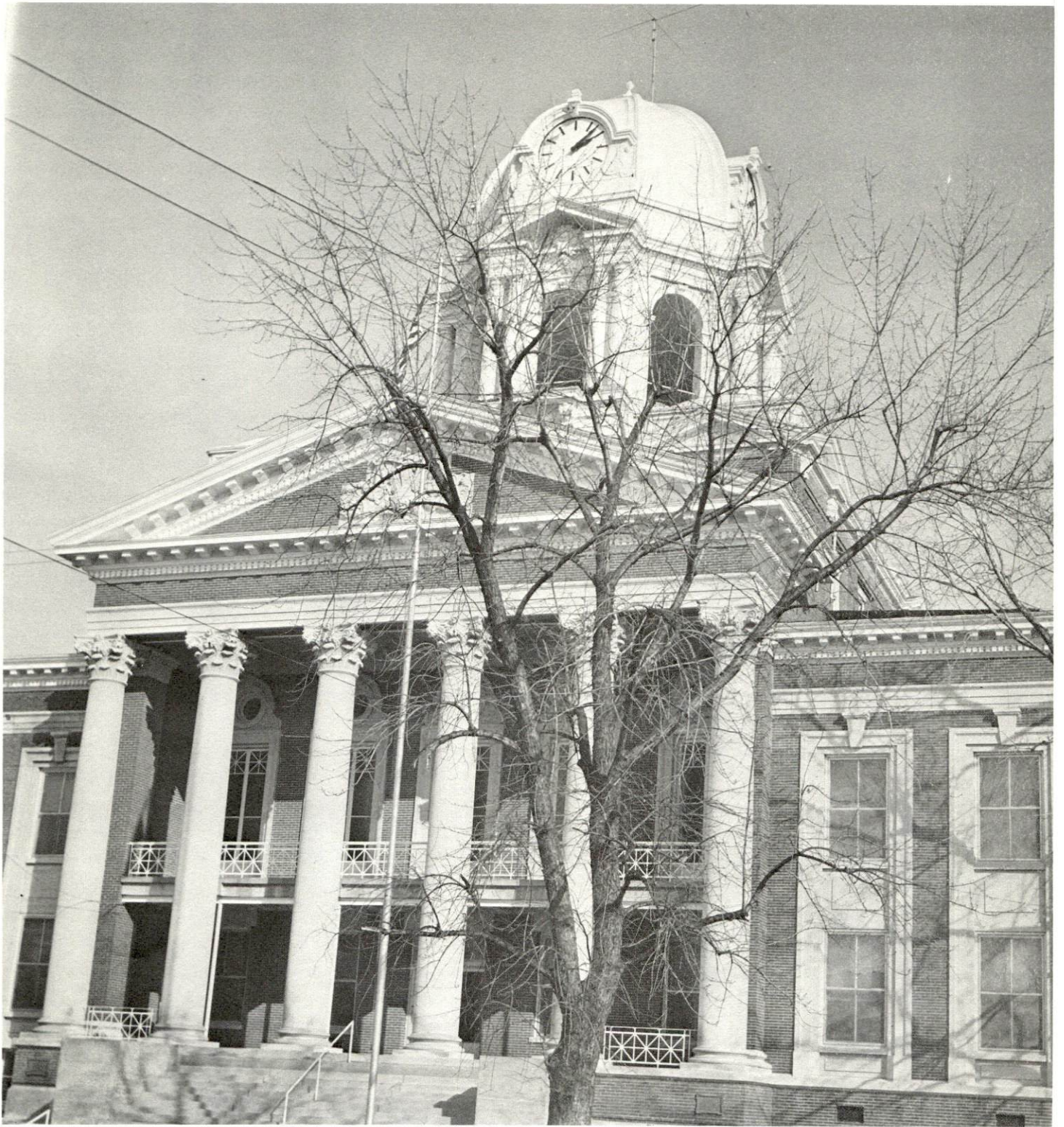
This copy has been prepared by the Kentucky Department of Commerce,  
Division of Research and Planning, and the cost of printing paid from  
state funds.

## TABLE OF CONTENTS

<u>Chapter</u>	<u>Page</u>
INDUSTRIAL SITES . . . . .	i
MUHLENBERG COUNTY, KENTUCKY - A RESOURCE PROFILE . . . . .	1
THE LABOR MARKET . . . . .	4
Population Trends . . . . .	4
General Employment Characteristics . . . . .	4
Manufacturing Employment Trends by Industry . . . . .	4
Muhlenberg County Manufacturing Firms, Their Products and Employment . . . . .	5
Wage Rates for Selected Occupations . . . . .	6
Labor Organizations . . . . .	6
Current and Future Labor Supply . . . . .	8
Total Personal Income . . . . .	8
Per Capita Personal Income . . . . .	8
EDUCATION . . . . .	9
Public Schools . . . . .	9
Parochial, Private and Special Schools . . . . .	9
Vocational Schools . . . . .	11
Colleges . . . . .	11
TRANSPORTATION . . . . .	12
Rail . . . . .	12
Truck Service . . . . .	12
Air . . . . .	13
Bus . . . . .	13
Taxi . . . . .	13
Rental Services . . . . .	13
POWER AND FUEL . . . . .	14
Electricity . . . . .	14
Natural Gas . . . . .	14



<u>Chapter</u>	<u>Page</u>
WATER AND SEWERAGE . . . . .	16
Water. . . . .	16
Sewerage . . . . .	17
LOCAL GOVERNMENT . . . . .	19
City . . . . .	19
County . . . . .	19
Assessed Value of Property - 1968 . . . . .	19
Local General Property Tax Rates Per \$100 of Assessed Valuation - 1968. . . . .	19
Planning and Zoning . . . . .	21
Safety . . . . .	21
Police. . . . .	21
Fire . . . . .	21
Rescue Service. . . . .	22
Sanitation. . . . .	22
HEALTH . . . . .	23
Hospitals . . . . .	23
Nursing Homes . . . . .	23
Public Health . . . . .	23
OTHER LOCAL FACILITIES. . . . .	25
Communications. . . . .	25
Library Services . . . . .	25
Religious Institutions. . . . .	27
Financial Institutions. . . . .	27
Hotels and Motels . . . . .	27
Clubs and Organizations . . . . .	28
RECREATION . . . . .	29
Local. . . . .	29
AGRICULTURE - NATURAL RESOURCES - CLIMATE . . . .	30
Agriculture . . . . .	30
Natural Resources. . . . .	30
Climate. . . . .	30
HISTORY . . . . .	31

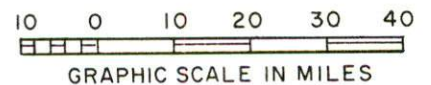
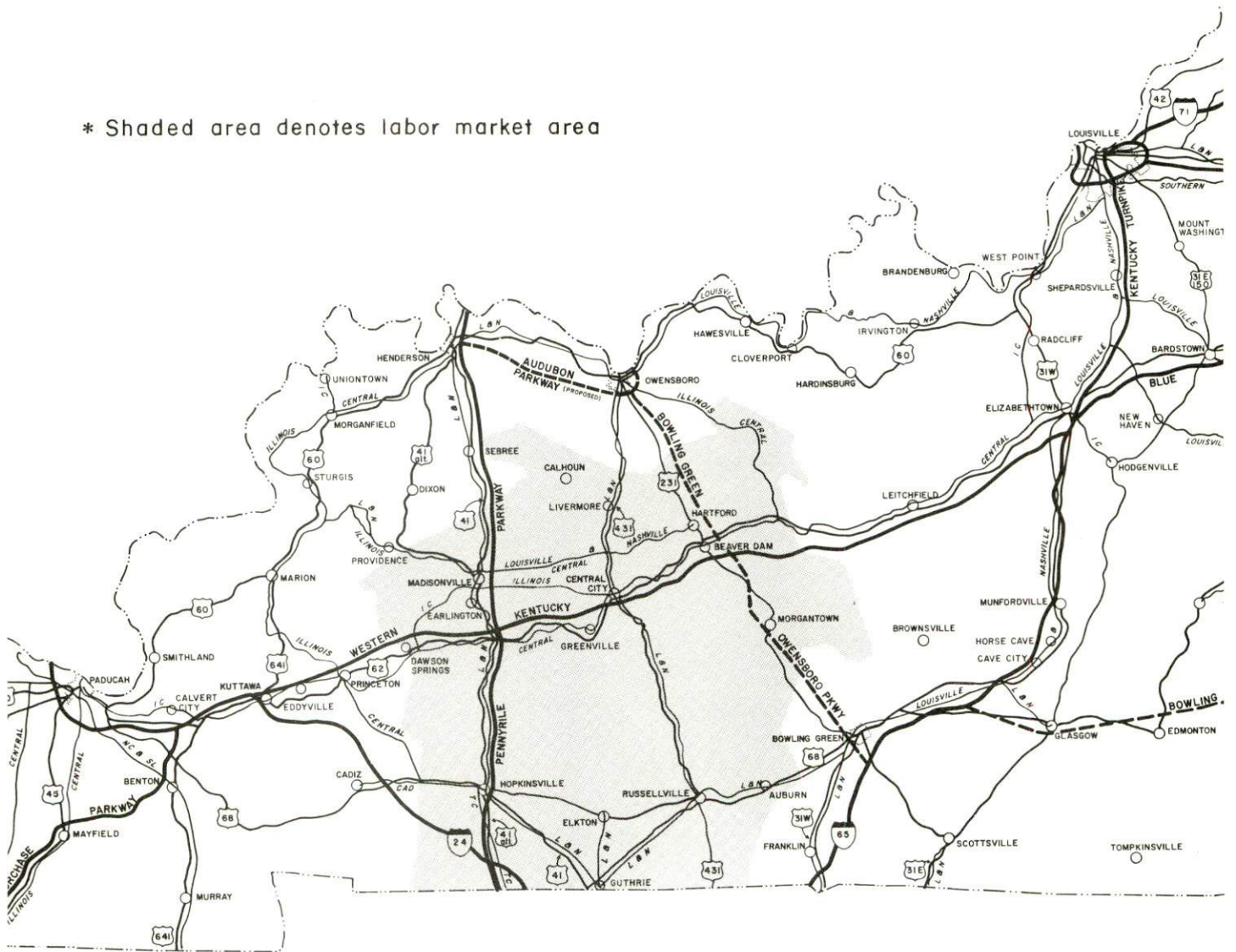


Muhlenberg County Courthouse



# MUHLENBERG COUNTY LABOR MARKET AREA

\* Shaded area denotes labor market area





## MUHLENBERG COUNTY, KENTUCKY - A RESOURCE PROFILE

### Location

Muhlenberg County, the largest coal producing county in the United States, lies in the Western Coal Field Region of Kentucky. The county is bordered by the Green and Mud Rivers on the east and the Pond River on the west. Though Muhlenberg County is primarily rural, proximity to Owensboro and Kentucky and Barkley Lakes places the area within easy reach of both excellent recreational facilities and the advantages of a metropolitan area.

### The Economic Framework

The economy of Muhlenberg County has traditionally been one of agriculture and mining, but it is gradually becoming more industrialized. There have been 435 manufacturing jobs added to the economy since 1960, for a 95.4 percent increase. The greatest concentration of manufacturing is in wood products, apparel and metal products.

Total employment in Muhlenberg County for 1968 was 7,490. The major segments of employment are trade and services, mining and quarrying, government, agriculture, and manufacturing.

Per capita income in Muhlenberg County was \$2,072 in 1968, below the Kentucky average yet higher than in any of the adjoining counties, with the exception of Christian and Hopkins Counties.

The Muhlenberg County labor market area, including Muhlenberg and its seven adjoining counties, had a total 1968 employment of 61,840. Agriculture accounts for 10,620 jobs, trade and services 10,380, manufacturing 10,470 and government 11,450. Manufacturing has increased significantly in the area since 1960, with the greatest employment increases in the apparel and machinery and metal products industries.

### Sources For Growth

1. There is a current estimated labor supply of 5,100 men and 6,150 women available for industrial jobs in the labor market area. The current labor supply includes the unemployed, underemployed, and persons who would enter the labor force if jobs become available. During the next five years the labor supply will be augmented by the 9,775 boys and 9,450 girls reaching 18 years of age.

2. The local transportation capability of Muhlenberg County is adequate to accommodate future industrialization of the county. Two railroads provide freight service to Central City. The Western Kentucky Parkway passes through Muhlenberg County, with an exchange located at the city limits of Central City. The Parkway extends from Princeton to Elizabethtown where it connects with the Blue Grass Parkway and provides easy access to Interstate 75 and Interstate 65. Commercial air service is available in Owensboro, only 36 miles away.

3. Energy - both gas and electricity are available for industrial and residential purposes in adequate amounts. Planned construction of new water plants in Central City and Drakesboro, when combined with the Greenville water system, will enable the county to meet the water needs of future industry. The plans for the Drakesboro plant were approved by the State Health Department in October 1968.

4. Industrial Sites - Muhlenberg County has five sites available for industrial use. Four of the sites are optioned by the Central City Chamber of Commerce; one site is owned by the Greenville Industrial Development Corporation.

5. Education - Muhlenberg County is served by three separate school systems: Muhlenberg County, Central City Independent, and Greenville Independent. The three systems maintain a total of seven high schools and ten elementary schools. All three systems have shown great interest in modernizing facilities and methods of education.

Two senior colleges are located in Owensboro, only 36 miles distant. In addition, Hopkinsville Community College is also 36 miles away and Madisonville Community College is only 22 miles from Central City.

#### Community Programs For Improvement

Muhlenberg County has been aggressively seeking to provide more services and facilities to its residents. The Muhlenberg County Opportunity Center has been organized to provide employment for handicapped persons. In addition great improvement and modernization has occurred in water facilities, schools, community services, recreational facilities, health services and business facilities throughout the county.

#### Recreation, Entertainment and Livability

Muhlenberg County is primarily a rural area, but proximity to Owensboro and the newly developed Land Between The Lakes National Recreation Area provides the county with a whole range of entertainment and recreational facilities within easy commuting distance.

Lake Malone State Park is located in Muhlenberg County, 18 miles south of Greenville, off U. S. 431. The lake provides swimming, boating, and fishing, while the park provides beach, hiking, picnicking, playground, and camping facilities. Green River also provides the area with excellent opportunities for fishing and water sports. In addition, many of the ponds in the strip mining area have been stocked with fish, making the county truly a haven for fishermen.

Muhlenberg County is only 92 miles from the Land Between the Lakes National Recreation Area and Kentucky and Barkley Lakes and the wealth of recreational facilities found there, including an outdoor drama during July and August.



# THE LABOR MARKET

## POPULATION TRENDS <sup>1/</sup>

Area	1969 (Est.)	1960	1950	Percent Change	
				1960-69	1950-60
Labor Market Area	197,800	192,079	191,070	+ 0.3	+ 0.1
Muhlenberg County	26,800	27,791	32,501	- 3.6	- 14.5
Central City	5,500*	3,694	4,110	+ 48.9	- 10.1
Greenville	4,300*	3,198	2,661	+ 34.5	+ 20.2

\*1966 estimate.

## GENERAL EMPLOYMENT CHARACTERISTICS <sup>2/</sup>

Major Employment Group	1968	1968
	Muhlenberg County	Labor Market Area
TOTAL	7,493	61,844
Agricultural	886	10,621
Nonagricultural	6,607	51,223
Manufacturing	891	10,473
Trade and Services	1,476	10,382
Government	1,127	11,452
Other	3,102	18,916

## MANUFACTURING EMPLOYMENT TRENDS BY INDUSTRY SEPTEMBER 1959 AND 1968 <sup>3/</sup>

Industry	Muhlenberg County			Labor Market Area		
	1968	1960	% Change	1968	1960	% Change
TOTAL	891	456	+95.4	10,473	5,461	+ 91.8
Food & Kindred Products	30	40	-25.0	768	555	+ 38.4
Tobacco	21	29	-27.6	35	35	0
Apparel, Textiles, Leather	328	0		4,135	2,328	+ 77.6
Lumber & Furniture	413	359	+15.0	1,552	1,277	+ 21.5
Printing, Publishing, Paper	8	21	-61.9	163	135	+ 20.7
Chemicals, Petroleum, Coal & Rubber	12	0		318	91	+ 249.5
Stone, Clay, & Glass	6	7	-14.3	107	84	+ 27.4
Machinery & Metal Products	73	0		2,395	735	+ 225.9

MUHLENBERG COUNTY MANUFACTURING FIRMS,  
THEIR PRODUCTS AND EMPLOYMENT <sup>4/</sup>

Firm	Product	Employment		
		Total	Male	Female
<u>Central City</u>				
Associates Pallet, Inc.	Pallets	40	40	0
Central City Publishing Corp.	Newspapers, job printing	10	7	3
Central City Tool & Mfg. Co., Inc.	Casting molds, tools, dies	20	20	0
Central Pallet Mills, Inc.	Pallets	29	28	1
Central Readymix & Block Co.	Ready mixed concrete	5	5	0
Coca-Cola Bottling Co.	Soft drinks			
Drakesboro Concrete Plant	Ready mixed concrete	10	10	0
Expendable Pallet Mfg. Co., Inc.	Pallets	24	23	1
Monsanto Company	Nitro-carbo-nitrate	9	9	0
Pallet Mills, Inc.	Pallets	26	25	1
Paragon Printing Works	Job printing	3	0	3
Scott Pulp Mill	Paper	2	2	0
Southern Crate Mfg. Co.	Crating, pallets	15	15	0
Southern Ice Co.	Ice	4	4	0
U & W Pallet, Inc.	Pallets, wood chips, lumber	81	80	1
<u>Greenville</u>				
Commercial Printing Service	Job printing	2	1	1
Cowden Greenville Co.	Work clothes, play clothes	330	20	310
Duncan Welding Service	Fabricated steel products	3		
Geibel Lumber Co., Inc.	Pallets, skids, hardwood lumber	23	22	1
Greenville-Leader-Central City	Newspaper	8	3	5
Greenville Quarries, Inc.	Agricultural lime	28	25	3
Hahn & Co.	Job printing	3	1	2
Home Milling Co., Inc.	Feed	9	8	1
Marvel Industries, Inc.	Compact refrigerators	75		
Murphy Machine Co.	Tools, dies	5	4	1
National Lock Co.	Wood screws	45	40	5
S. E. Rice Tobacco Co.	Chewing, pipe tobacco	26	19	7
Ensign-Bickford Co.	Prima cord	20	12	8
Cable Service Co.	Wire cable, copper	6	6	0
<u>Moorman</u>				
Moorman Wood Products, Inc.	Pallets	15	15	0



WAGE RATES FOR SELECTED OCCUPATIONS  
CENTRAL CITY, KENTUCKY 5/

Classification	Wages Per Hour*		
	Starting	Maximum	Prevailing
<u>Production Employees</u>			
Assembler	\$1.65	\$2.35	\$2.00
Inspector	1.75	2.50	2.20
Production Laborer	1.65	2.00	1.90
Welder, Arc or Acetylene (Class-A)	2.50	3.00	2.75
<u>Service Employees</u>			
Electrician (Class-A)	\$2.00	\$3.50	\$3.00
Laborer	1.60	2.25	2.00
Machinist	2.50	3.50	3.00
Mechanic, Maintenance	2.00	3.00	2.50
Truck Driver, Industrial (Class-A)	1.60	2.75	2.25
<u>Office Employees</u>			
Bookkeeper	\$1.60	\$2.00	\$1.80
File Clerk	1.60	2.00	1.80
Receptionist	1.60	2.00	1.80
Secretary	1.75	2.25	2.00
Typist	1.60	2.00	1.75

\*The above statistics would not be considered union rate.

LABOR ORGANIZATIONS

<u>Union</u>	<u>Representing Workers at:</u>
United Mine Workers	Monsanto Company

WAGE RATES FOR SELECTED OCCUPATIONS  
GREENVILLE, KENTUCKY <sup>5/</sup>

Classification	Wages Per Hour *		
	Starting	Maximum	Prevailing
<u>Production Employees</u>			
Assembler	\$1.65	\$2.35	\$2.00
Inspector	1.75	2.50	2.20
Production Laborer	1.65	2.00	1.90
Welder, Arc or Acetylene (Class-A)	2.50	3.00	2.75
<u>Service Employees</u>			
Electrician (Class-A)	\$2.00	\$3.50	\$3.00
Laborer	1.60	2.25	2.00
Machinist	2.50	3.50	3.00
Mechanic, Maintenance	2.00	3.00	2.50
Truck Driver, Industrial (Class-A)	1.60	2.75	2.25
<u>Office Employees</u>			
Bookkeeper	\$1.60	\$2.00	\$1.80
File Clerk	1.60	2.00	1.80
Receptionist	1.60	2.00	1.80
Secretary	1.75	2.25	2.00
Typist	1.60	2.00	1.75

\*The above statistics would not be considered union rate.

LABOR ORGANIZATIONS

<u>Unions</u>	<u>Representing Workers at:</u>
United Mine Workers	Greenville Quarries, Inc.
United Garment Workers of America	Cowden-Greenville Co.
International Brotherhood of Teamsters, Chauffeurs, Warehousemen, and Helpers	Marvel Industries, Inc.

CURRENT AND FUTURE LABOR SUPPLY -  
MUHLENBERG LABOR MARKET AREA 6/

County	Current Labor Supply 1969			Future Labor Supply by 1975 (Becoming 18 Years of Age)		
	Total	Male	Female	Total	Male	Female
Labor Market Area	11,257	5,091	6,166	19,237	9,772	9,465
Muhlenberg	2,133	780	1,345	2,717	1,373	1,344
Butler	1,181	729	452	965	489	476
Christian	1,555	688	867	6,104	3,104	3,000
Hopkins	2,098	839	1,259	3,806	1,030	1,867
Logan	775	236	539	1,993	1,016	977
McLean	788	274	514	876	448	428
Ohio	2,055	1,142	913	1,658	832	826
Todd	672	395	277	1,118	571	547

TOTAL PERSONAL INCOME 7/

Area	1968	1959	% Change
Muhlenberg County	\$ 55,736,000	\$ 34,549,000	+61.3
Labor Market Area	463,742,000	261,014,000	+77.7
Kentucky	8,360,000,000	4,655,000,000	+79.6

PER CAPITA PERSONAL INCOME 8/

Area	1968	1959	% Change
Muhlenberg County	\$ 2,072	\$ 1,274	+62.6
Labor Market Area	1,427 to 3,230	916 to 1,751	+55.8 to 84.5
Kentucky	2,614	1,552	+68.4



## EDUCATION

### Public Schools

	<u>Central City Ind.</u>	<u>Greenville Ind.</u>	<u>Muhlenberg County</u>
Total Enrollment	997	1,067	4,620
Elementary	502	546	3,297
Junior High	--	--	--
High School	495	521	1,323
Student-Teacher Ratio	20-1	23-1	27-1
Elementary	20-1	24-1	31-1
Junior High	--	--	--
High School	20-1	22-1	20-1
State Rating of High School	Standard	Standard	1 Standard, 4 Provisional
Other Accreditations	Southern Association of Colleges and Schools		
Percent High School Graduates to College	39.5	66.3	25.6
Current Expenditures Per Pupil	\$371.92	\$336.00	\$370.72
Bonded Indebtedness	\$121,000	\$173,000	\$900,000

### Parochial, Private and Special Schools

	<u>Parochial</u>
Total Enrollment	53
Elementary	53
Student-Teacher Ratio	
Elementary	15-1





Greenville High School



### Vocational Schools

	<u>Nearest Area School</u>	<u>Nearest Extension Center</u>
Location	Madisonville	Greenville
Miles Distant	22	
Curriculum	Auto mechanics Carpentry Drafting Electricity Welding Practical nursing Surgical technician Distributive education Auto body repair	Auto mechanics Carpentry Drafting Electricity Welding

### Colleges

<u>Name</u>	<u>Area - Within 50 miles</u>		<u>Highest Degree Conferred</u>
	<u>Location</u>	<u>Enrollment</u>	
Brescia College	Owensboro	1,115	Baccalaureate
Kentucky Wesleyan College	Owensboro	1,183	Baccalaureate
Madisonville Com- munity College	Madisonville	203	Associate
Hopkinsville Com- munity College	Hopkinsville	409	Associate

## TRANSPORTATION

### Rail

Lines Serving - Louisville & Nashville Railroad and Illinois Central  
Railway

Services - Freight, switching, REA pickup and delivery

RAILWAY TRANSIT TIME FROM CENTRAL CITY, KENTUCKY, TO: 9/

No. of Days		No. of Days	
City	CL	City	CL
Atlanta, Ga.	4	Los Angeles, Calif.	5
Birmingham, Ala.	3	Louisville, Ky.	2
Chicago, Ill.	3	Nashville, Tenn.	2
Cincinnati, Ohio	3	New Orleans, La.	4
Cleveland, Ohio	3	New York, N. Y.	4
Detroit, Mich.	4	Pittsburgh, Pa.	4
Knoxville, Tenn.	3	St. Louis, Mo.	3

### Truck Service

#### Company

#### Home Office

D-C International, Inc.	Dayton, Ohio
Illinois Central Railway Company (I. C. Railroad freight only)	
Louisville & Nashville Railroad Company (Railroad pickup delivery only)	
Arnold Ligon Truck Line, Inc.	Indianapolis, Indiana
Majors Truck Lines, Inc.	Caneyville, Kentucky
McLean Trucking Company	Winston-Salem, North Carolina
Motor Freight Corporation	Terre Haute, Indiana
Roadway Express, Inc.	Akron, Ohio
Tennessee Cartage Company, Inc.	Nashville, Tennessee



# HIGHWAY MILES AND TRUCK TRANSIT TIME IN DAYS FROM CENTRAL CITY, KENTUCKY, TO SELECTED MARKET CENTERS

City	Highway Miles	Delivery Time		City	Highway Miles	Delivery Time <sup>10/</sup>	
		LTL	TL			LTL	TL
Atlanta, Ga.	362	2-3	1	Los Angeles, Calif.	2,103	7-9	4-7
Birmingham, Ala.	311	2-3	1	Louisville, Ky.	113	1	1
Chicago, Ill.	415	2-3	1	Nashville, Tenn.	106	1-2	1
Cincinnati, Ohio	212	1-2	1	New Orleans, La.	662	3-4	2
Cleveland, Ohio	456	2-3	1-2	New York, N. Y.	971	3-4	2-3
Detroit, Mich.	477	2-3	1-2	Pittsburgh, Pa.	603	2-4	1-2
Knoxville, Tenn.	303	1-2	1	St. Louis, Mo.	354	1-2	1

## Air

	<u>Local</u>	<u>Nearest Commercial</u>
Location:	Greenville	Owensboro
Runways:	1 paved	2 paved
Length:	3,000 x 75 ft.	6,500 x 150 ft.; 3,700 x 100 ft.
Traffic		
Control:	Wind tee lighted	Control tower, ground control, guards
Lighting:	Runway lights, sundown to 1 a.m.	Beacon, runways, wind tee, obstruction lights, taxi lights
Services:	80-100 octane, charter flight instruction, and A & E repairs	80, 91, and 100 octane, Jet A fuel, Ozark Airlines, general flying service, taxi

Bus                      Central City: Bowling Green-Hopkinsville Bus Company  
                              Greenville: Kentucky Bus Lines

Taxi                      Central City: Yellow Cab  
                              Greenville: Yellow Cab

Rental Services      Central City: Car

## POWER AND FUEL

### Electricity

Company serving Central City and Greenville - Kentucky Utilities Company

Source of power - Kentucky Utilities Company

Total generating capacity - 740,000 KW

Industrial rates negotiated by - Kentucky Utilities Company,  
Lexington, Kentucky, Industrial Development Department

Company serving Muhlenberg County - Pennyriple Rural Electric Cooperative Corporation

Source of power - Tennessee Valley Authority

Total generating capacity - 18,000,000 KW

Industrial rates negotiated by - Pennyriple Rural Electric Cooperative Corporation, Hopkinsville, Kentucky

### Natural Gas

Company serving Central City - Western Kentucky Gas Company

Source of supply - Texas Gas Transmission Corporation

Size of transmission line - 16-inch

Distribution lines - 1, 1 1/2, 2, and 4 inches

BTU content - 1,050; Specific gravity - .60

Company serving Greenville - Western Kentucky Gas Company

Source of supply - Texas Gas Transmission Corporation

Size of transmission line - 16-inch

Distribution lines - 2, 3, 4, and 6 inches

BTU content - 1,050; Specific gravity - .60

Rates:

#### General Service Rate 1

First	1,000 cubic feet or less	\$1.50
Next	2,000 cubic feet per month	.0895 per 100 cubic feet
Next	7,000 cubic feet per month	.0715 per 100 cubic feet
Next	40,000 cubic feet per month	.0655 per 100 cubic feet
All additional	cubic feet per month	.0585 per 100 cubic feet

Minimum charge \$1.50 per meter per month



Rate 3-A - Gas service under this rate is available only to customers who require and contract for not less than 100,000 cubic feet per day, or 24,000,000 cubic feet per year. Service may be 100 percent interruptible, or 100 percent firm, or a combination of the two. The cost shall be:

Firm Service: Shall be purchased under "General Service Rate 1."

Interruptible Service:

First	2,000,000 cu. ft. per month	\$950.00
Next	2,000,000 cu. ft. per month	44.5¢ per 1,000 cu. ft.
Next	2,000,000 cu. ft. per month	42.5¢ per 1,000 cu. ft.
All additional	cu. ft. per month	36.5¢ per 1,000 cu. ft.

Minimum Charge \$950.00 per meter per month

Company serving Drakesboro, Ebenezer, Browder, Beech Creek,  
Beechmont and Belton - Drakesboro Natural Gas System

Source of supply - National Chemical Company

## WATER AND SEWERAGE

### Water

#### Central City

Company serving - Municipal Water & Sewer Commission

Source - Green River

Treatment plant capacity - 1,000,000 gpd

Peak daily consumption - 1,000,000 gallons

Type treatment - coagulation, sedimentation, filtration, and chlorination

Storage capacity - 985,000 gallons

Average pressure - 60 psi

Average temperature - 72° F.

Size mains - 4, 6, and 8 inches

#### Greenville

Company serving - Utilities Commission of the City of Greenville

Source - 3 lakes

Treatment plant capacity - 750,000 gpd

Average daily consumption - 471,000 gallons

Peak daily consumption - 610,000 gallons

Type treatment - coagulation, sedimentation, filtration, and chlorination

Storage capacity - 350,000 gallons

Average pressure - 60 psi

Average temperature - 72° F.

Size mains - 4, 6, 8, and 10 inches

#### Drakesboro

Drakesboro is presently buying treated water from Central City. The community of Drakesboro is planning the construction of a water plant involving complete treatment. Plans were approved by the State Health Department in October, 1968. The plant will have a treatment capacity of 180,000 gpd. An impoundment will serve as the source of supply.

#### Muhlenberg County

Name - Muhlenberg County Water District

Source - Municipal Water & Sewer Commission of Central City

Number of customers - 1,600, central part of county

Storage capacity - 1,250,000 gallons



Name - Muhlenberg County Water District No. 3  
Source - Muhlenberg County Water District  
Number of customers - 250, northern part of county  
Storage capacity - 250,000 gallons

Name - Muhlenberg County Water District No. 1  
Facilities - Presently using treatment facilities originally used by  
the community of Graham.

MONTHLY WATER RATES FOR WHOLESALE  
AND INDUSTRIAL CONSUMERS

Central City

Minimum for	1,000 gallons	\$2.00
Next	2,000 gallons	1.20 per M gallons
Next	2,000 gallons	1.10 per M gallons
Next	5,000 gallons	.80 per M gallons
Next	10,000 gallons	.60 per M gallons
Next	80,000 gallons	.40 per M gallons
Excess		.35 per M gallons

Greenville

First	1,000 gallons	\$2.20 (Minimum)
Next	1,000 gallons	1.15 per M gallons
Next	3,000 gallons	1.00 per M gallons
Next	5,000 gallons	.85 per M gallons
Next	40,000 gallons	.70 per M gallons
Next	50,000 gallons	.65 per M gallons
Over	100,000 gallons	.60 per M gallons

Surface water sources - Green and Mud Rivers, Pond River, small  
streams

Average discharge - 8,551 cfs, 254 cfs

Expected ground water yield - 5 or less gpm

Yield along main streams - 5 - 50 gpd in north, 5 - 200 gpd in  
southcentral

Sewerage

Company serving Central City - Municipal Sewerage System  
Design capacity - 600,000 gallons per day  
Average daily flow - 400,000 gallons  
Treatment - coagulation, sedimentation, filtration and chlorination  
Type treatment - primary and secondary  
Treated effluent discharged into - Little Cypress Creek

Size of sanitary mains - 6, 8 and 12 inches

Size of storm mains - 8 to 48 inches

Rates - one-half of monthly water bill

Company serving Greenville - Municipal Sewerage System

Design capacity - 500,000 gallons per day

Average daily flow - 150,000 gallons

Treatment - clarifier, drying beds

Type treatment - primary and secondary

Treated effluent discharged into - Caney Creek

Size of sanitary mains - 6, 8 and 10 inches

Rates - \$2.50 up to 4,000 gallons of water, over 4,000 gallons, rate is one-half of monthly water bill

Drakesboro - Septic tanks are used in the community of Drakesboro except for one subdivision which utilizes a lagoon-type treatment of sewage.



## LOCAL GOVERNMENT

### City

#### Central City

Structure - Mayor - 4-year term; 8 councilmen - 2-year terms

Budget 1968-69 - General Fund \$147,094

Fees and licenses - Business licenses - \$5.50 to \$150

#### Greenville

Structure - Mayor - 4-year term; 6 councilmen - 2-year terms

Budget 1968 - General Fund \$118,044

Fees and licenses - Business licenses - \$5 to \$75

### County

Structure - County judge - 4-year term; 5 magistrates - 4-year terms

Budget 1969-70 - General Fund \$191,390; Road Fund \$149,010

### Assessed Value of Property - 1968

<u>Classes of Property*</u>	<u>Central City</u>	<u>Greenville</u>	<u>Muhlenberg County</u>
Real Estate	\$11,476,600	\$17,454,160	\$95,220,862
Tangibles	3,602,760	5,919,300	46,669,370
Public Service	2,071,266**	1,632,138**	23,323,187

### Local General Property Tax Rates Per \$100 of Assessed Valuation - 1968

<u>Taxing Unit***</u>	<u>Central City</u>	<u>Greenville</u>	<u>Muhlenberg County</u>
State	\$ .015	\$ .015	\$ .015
County	.128	.128	.128
School	.528	.541	.414
City	.235	.207	
Total	\$ .906	\$ .891	\$ .557

\*Property assessed at 100 percent of fair value.

\*\*1969 estimate.

\*\*\*Manufacturing machinery, raw materials inventories and goods in process inventories are not subject to local tax. State rate is only .15 per \$100.



Greenville City Building



## Planning and Zoning

### Central City

Agency - Central City Planning Commission

Plans completed - Comprehensive Plan, Zoning Ordinance, Subdivision Regulations, Public Improvements Program

### Greenville

Agency - Greenville Planning Commission

Plans completed - Comprehensive Plan, Zoning Ordinance, Subdivision Regulations

Plans in process - revision of Comprehensive Plan and Subdivision Regulations

Codes adopted - All major codes and ordinances

Other programs - Certified Workable Program for Community Improvement, Public Housing

## Safety

<u>Police</u>	<u>Central City</u>	<u>Greenville</u>	<u>Muhlenberg County</u>
Total staff	10	6	3
Radio-patrol cars (Patrol cars not radio-equipped)	1 1	2	3
<u>Fire</u>			
American Insurance Association Fire Rating	7	7	
Full-time staff	3	3	
Part-time staff	3	20	
Volunteers	25		
Equipment:			
750 gpm		2	
700 gpm	1		
500 gpm	2		
tanker	1		1*
light truck	1		1*

\*Operate out of Central City Fire Department and may be taken on rural runs.

### Rescue Service

Central City - Muhlenberg County Rescue Squad:

Number of volunteers - 25

Equipment - emergency rescue truck, boat and motor, dragging hooks, resuscitator, first aid equipment

### Sanitation

	<u>Central City</u>	<u>Greenville</u>
Type service	Municipal	Private contractor
Cost	Residential - \$1.50 per month Business - varies according to volume	Residential - \$2.50 Business - varies according to volume
Collection frequency	Weekly - residential areas	Weekly
Trash pickup	3 times per business week	
Disposal method	Sanitary land fill	Strip mine pit



## HEALTH

### Hospitals

	<u>Number</u>	<u>Beds</u>
General hospitals	1	166
General hospital facilities - Equipped to accommodate major and minor surgery, X-ray and EKG machine, and laboratory		
Medical staff - 10 doctors, 14 registered nurses, 50 licensed practical nurses		

### Nursing Homes

	<u>Number</u>	<u>Beds</u>
Extended Care Homes	1	91
Personal Care Homes	4	244

### Public Health

Facility - Muhlenberg County Health Department  
Staff - Central City - clerk, sanitarian  
          Greenville - clerk, registered nurse, nurse (part-time) travels  
                    to both Greenville and Central City  
Budget 1968-69 - \$43,440



Muhlenberg Community Hospital



## OTHER LOCAL FACILITIES

### Communications

Telephone - South Central Bell

Services - touch-tone dialing in Greenville and Central City; direct dialing, one and two-party lines, toll free exchange to all parts of the county

Telegraph - Western Union

Services - Central City - office and telephone  
Greenville - office and telephone

### Central City

Postal - Class -1 U. S. Post Office

Mail received - 3 times daily

Mail dispatched - 3 times daily

### Greenville

Postal - Class -1 U. S. Post Office

Mail received - 2 times daily

Mail dispatched - 2 times daily

Newspaper weeklies - The Messenger, The Times-Argus, The Greenville Leader

Circulation - combined circulation of 3,400 - Leader, 6,250

Radio - WMTA-AM, WNES-AM, WNES-FM

Hours of operation AM - 6 a. m. - sunset; sunrise - sunset

Hours of operation FM - sunrise - 10 p. m.

Television - No local station

Cable service - Kentucky Cable Service

Reception from - Bowling Green, Henderson; Evansville, Indiana; Nashville, Tennessee

### Library Services

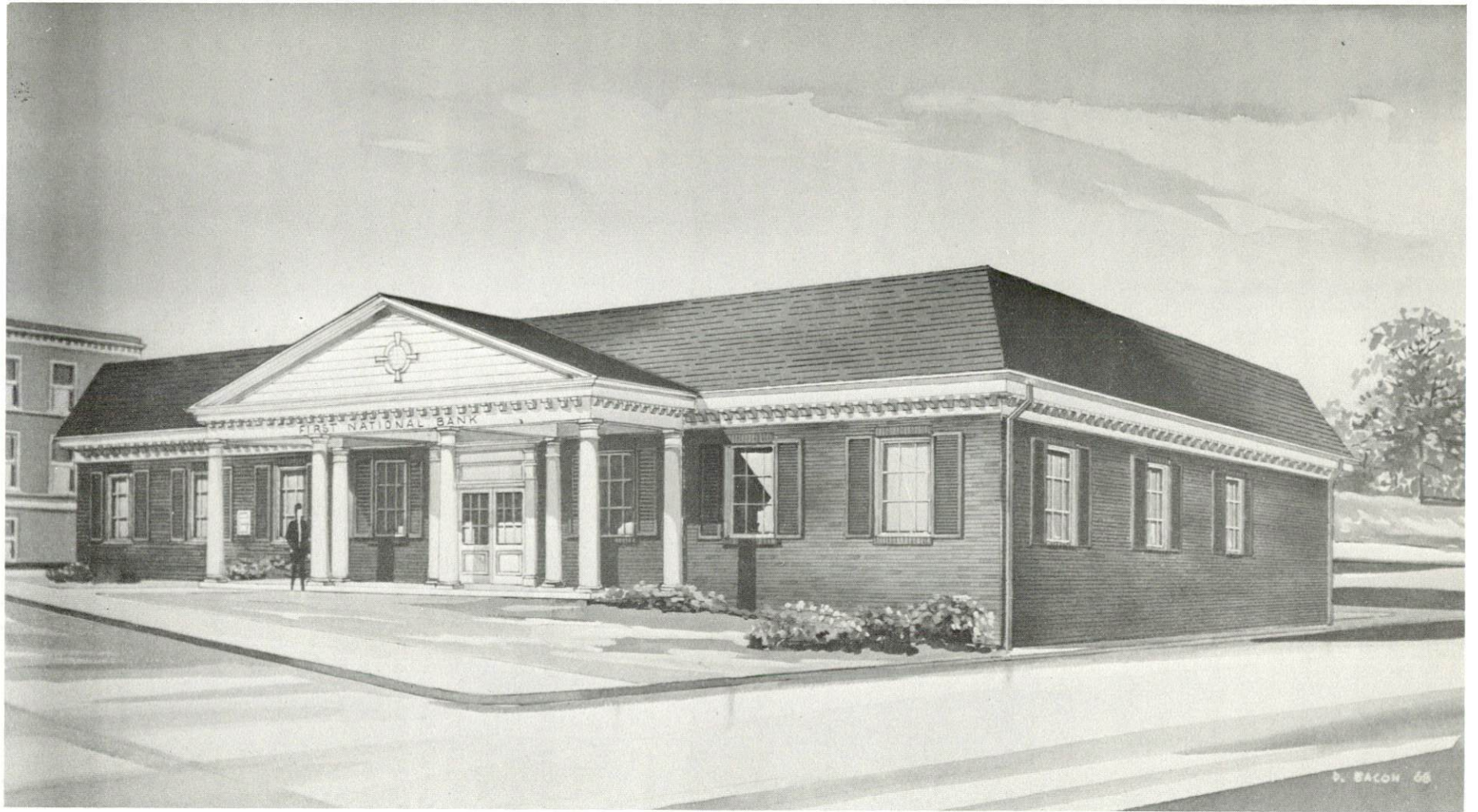
Public libraries - Central City Library, Harbin Memorial Library in Greenville

Size collection - combined 33,969 volumes

Circulation, 1967-68 - 48,791

Services - bookmobile, story hour, circulates periodicals, records, films, information file, visual equipment and sports equipment





First National Bank, Central City

## Religious Institutions

Number of churches - 17

Denominations - Baptist, Catholic, Christian, Disciples of Christ,  
Church of God, Church of the Nazarene, Holiness Church, Jehovah's  
Witnesses, Methodists, Mormon, Presbyterian, Pentecostal

## Financial Institutions

<u>Bank</u>	<u>Statement as of June 30, 1969</u>	
	<u>Assets</u>	<u>Deposits</u>
<u>Central City</u>		
The First National Bank	\$ 5,690,910.38	\$ 4,923,034.54
Citizens Union Bank	2,010,061.58	1,675,566.67
<u>Greenville</u>		
The First State Bank	\$ 15,402,613.37	\$ 13,799,177.15
<u>Central City</u>		
<u>Savings and Loan Associations</u>	<u>Assets</u>	<u>Shared Accounts</u>
First Federal Savings & Loan Association	\$ 19,278,050.72	\$ 17,960,952.68

## Hotels and Motels

<u>Central City</u>	
Caronado	20 units
Rambler Rose Motel	47 units
Sanman Motel	7 units
Underwood's Motel	8 units
<u>Greenville</u>	
Dan Dee	28 units
Holiday Lodge	15 units
Arbuckle Hotel	8 rooms
Hotel Greenville	30 rooms

### Clubs and Organizations

Business and Civic - Chamber of Commerce, Junior Chamber of Commerce, Retail Merchants, Parent-Teacher Association, Lions, Rotary, Civitan, and Kiwanis

Fraternal - American Legion, Masons, VFW, IOOF, Moose, and WOW

Women's - Lioness, Rotarians, Business and Professional Women's Club, Eastern Star, Homemakers, Junior Homemakers, Aeolian Music Club, Jaycettes, Rebekah, VFW Auxiliary, Woman's Club, Junior Woman's Club

Youth - Boy Scouts, Little League, Babe Ruth League, American Legion League, Girl Scouts, Brownies, Cub Scouts, 4-H, FHA, FBLA, FFA, FTA, Conservation Club, and Key Club



## RECREATION

### Local

#### Public Recreation Facilities

Parks - 11  
Playgrounds - 1  
Swimming pools - 1  
Baseball diamonds - 1  
Other - picnic area - 2

#### Private Recreation Facilities

Country clubs - 2  
Golf courses - 2  
Swimming pools - 1  
Movie theaters - 2  
Bowling lanes - 2  
Other - stock car races on Saturday

#### Tourist Attractions

Lake Malone State Park

# AGRICULTURE - NATURAL RESOURCES - CLIMATE 11/

## Agriculture

	<u>Muhlenberg County</u>	<u>Labor Market Area</u>
Total land area	307,840 acres	2,526,160 acres
Percent of area in farm land	45.7 percent	65.0 percent
Number of farms	979	10,275
Average size of farms	143.7 acres	159.7 acres
1964 value of all farm products	\$3,061,057	\$52,668,479
Value per farm	3,127	3,872
Total crop sales	1,691,708	29,876,104
Total livestock & livestock products	1,368,149	20,282,180
1967 agricultural production included:		
Burley tobacco	731,000 lbs.	15,210,000 lbs.
Dark-fired tobacco	572,000 lbs.	5,991,000 lbs.
Corn	975,000 bu.	17,687,000 bu.
Cattle and calves	20,700 head	248,200 head
Hogs and pigs	14,400 head	173,000 head
Milk production (1966)	5.1 million lbs.	135.2 million lbs.

## Natural Resources

Principal mineral resources	Coal, petroleum, and limestone
Other mineral resources	Clay, shale, and sand-gravel
Acres of commercial forest land	140,000 acres
Most abundant tree species	Red oaks, white oaks, hickories, sweetgum, ash, yellow poplar, beech, hard maple, and soft maple

## Climate

Temperature (30-year record)	
Annual mean	57.0°
Average annual 1968	54.9°
Record highest September, 1966	104.0°
Record lowest January, 1963	-18°
Mean annual degree-days	4,435
Precipitation (30-year record)	
Mean annual total	41.45 inches
Mean annual snow and sleet	12.1 inches
Total precipitation 1968	43.21 inches
Mean No. days precipitation	114
Average No. days thunderstorms	47
Prevailing winds (14-year record)	South-southwest

## HISTORY

Muhlenberg County was established in 1798 as the thirty-fourth county in Kentucky. It was named for General Peter Muhlenberg, a Revolutionary War hero who later served as Treasurer of the State of Pennsylvania, and in Congress of the United States for three terms.

During the Civil War, Greenville, the county seat, was held intermittently by both the Union and the Confederate Armies and was twice ransacked by guerrillas. The allegiance of Muhlenberg Countians was largely with the north. Nearly 1,000 men from the county served in the Union Army.

Central City, Muhlenberg County's largest town, is a mining town formerly known as Morehead's Horse Mill, having been built on land once owned by C. S. Morehead, who operated a gristmill propelled by horse power. Its name was changed in 1870, after the Illinois Central Railroad was built through the town.

Today, Muhlenberg County is still rich in coal, oil, gas, timber and agricultural products. This and the growth of manufacturing indicate a strong economic future for Muhlenberg County.



## SOURCES OF INFORMATION

- 1/ U. S. Department of Commerce, Bureau of the Census, Census of Population, 1950, 1960. Department of Rural Sociology, University of Kentucky, Kentucky County Provisional Population Estimates: January 1, 1969. Central City Chamber of Commerce. Greenville Chamber of Commerce.
- 2/ Kentucky Department of Economic Security, Division of Research and Statistics.
- 3/ Kentucky Department of Economic Security, Number of Workers in Manufacturing Industries Covered by Kentucky Unemployment Insurance Law Classified by Industry and County, September 1959, September 1968.
- 4/ Kentucky Department of Commerce, 1969 Kentucky Directory of Manufacturers.
- 5/ Kentucky Department of Economic Security, Division of Employment Service, Madisonville Office.
- 6/ Kentucky Department of Economic Security, Kentucky Labor Supply Estimates by County, January 1969. Kentucky Department of Commerce, Future Labor Supply by 1975.
- 7/ University of Kentucky, Office of Development Services and Business Research, Total Personal Income for Kentucky.
- 8/ University of Kentucky, Office of Development Services and Business Research, Per Capita Income of Kentucky.
- 9/ Freight Agents, Louisville & Nashville Railroad, Central City, Kentucky.
- 10/ McLean Trucking Company, Winston-Salem, North Carolina
- 11/ U. S. Department of Commerce, Bureau of the Census, Census of Agriculture, 1964. U. S. Department of Commerce, Environmental Science Services Administration, Climatological Data, 1961.

All other information was obtained from governmental offices, local businesses and organizations.