

1972

Industrial Resources: Pike County

Kentucky Library Research Collections
Western Kentucky University, spcol@wku.edu

Follow this and additional works at: https://digitalcommons.wku.edu/pike_cty

 Part of the [Business Administration, Management, and Operations Commons](#), [Growth and Development Commons](#), and the [Infrastructure Commons](#)

Recommended Citation

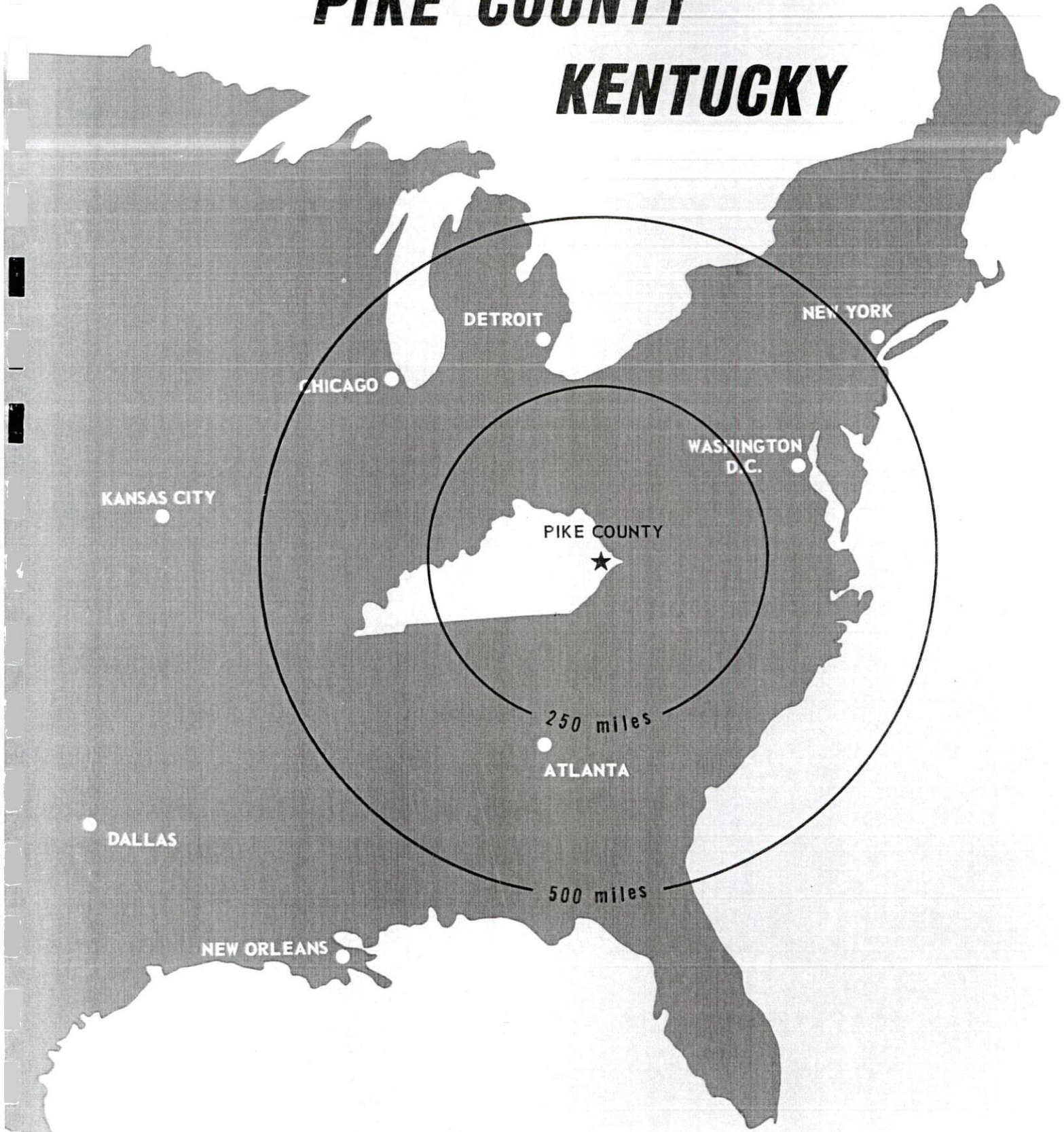
Kentucky Library Research Collections, "Industrial Resources: Pike County" (1972). *Pike County*. Paper 11.
https://digitalcommons.wku.edu/pike_cty/11

This Report is brought to you for free and open access by TopSCHOLAR®. It has been accepted for inclusion in Pike County by an authorized administrator of TopSCHOLAR®. For more information, please contact topscholar@wku.edu.

INDUSTRIAL RESOURCES

PIKE COUNTY

KENTUCKY



PIKE COUNTY INDUSTRIAL SITES

1972

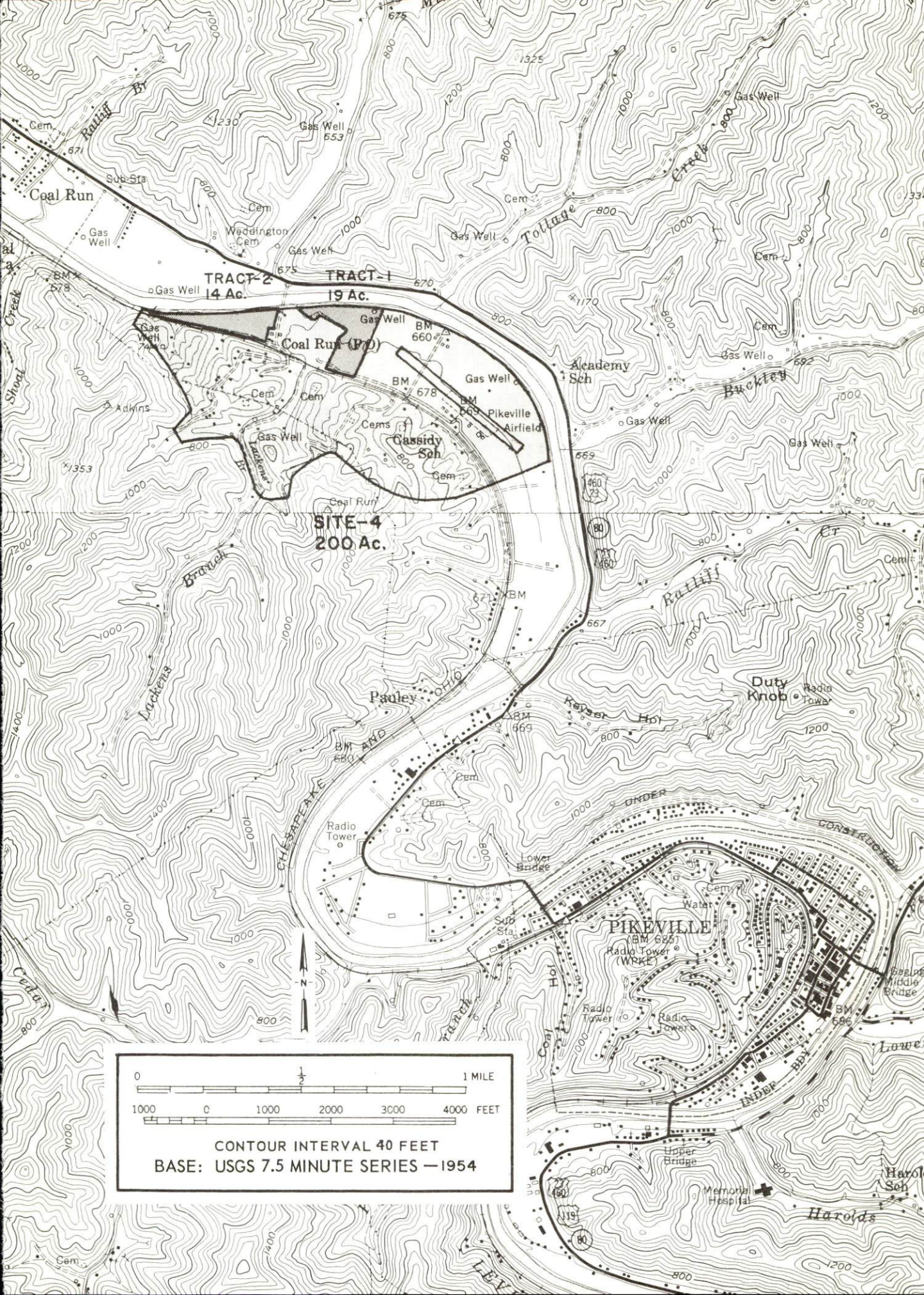
For more information about the following sites, contact Mr. Jack Farley, Executive Director, Pike County Chamber of Commerce, Pikeville, Kentucky; or the Kentucky Department of Commerce, Frankfort, Kentucky.

Pikeville

SITE #4: ACREAGE: 200+ acre proposed industrial park;
14- and 19-acre tracts are now available.
LOCATION: Inside north city limits
ZONING: Heavy industry
HIGHWAY ACCESS: U. S. 23 (presently one-lane light
controlled bridge to site)
RAILROADS: Chesapeake and Ohio Railway/Baltimore
and Ohio Railroad
WATER: Big Sandy Water District
SIZE LINE: 12-inch line on site
GAS: United Fuel Gas Company
SIZE MAIN: 6-inch main on site
ELECTRICITY: Kentucky Power Company
SEWERAGE: Pikeville Sewerage Department
SIZE LINE: 10-inch line 1,500 feet from site
OWNERSHIP: City of Pikeville

Elkhorn City

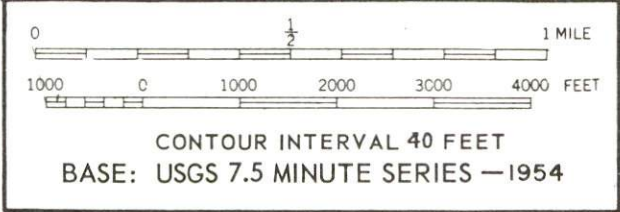
SITE #5: ACREAGE: 25 acres
LOCATION: Within southeast city limits of Elkhorn City
HIGHWAY ACCESS: Gravel access road to site from
Kentucky 80
RAILROAD: Not rail served
WATER: Elkhorn City Water Department
SIZE LINE: Water storage tank 2,000 feet from site
GAS: Natural gas not available
ELECTRICITY: Kentucky Power Company
SEWERAGE: Elkhorn City Sewer Department
SIZE LINE: 8-inch line 2,000 feet from site
OWNERSHIP: Private

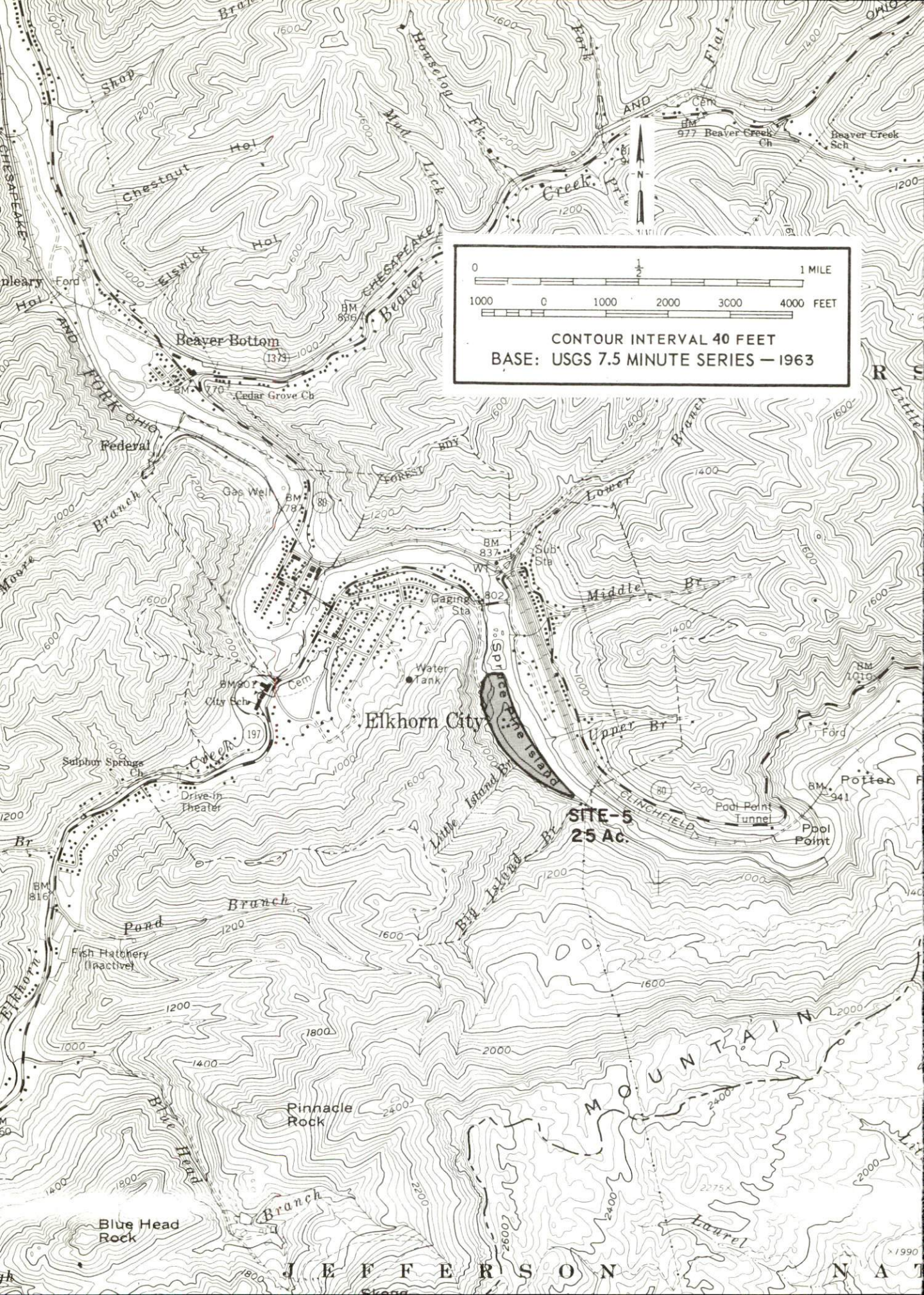


TRACT-2
14 Ac.

TRACT-1
19 Ac.

SITE-4
200 Ac.





0 1/2 1 MILE
 1000 0 1000 2000 3000 4000 FEET

CONTOUR INTERVAL 40 FEET
 BASE: USGS 7.5 MINUTE SERIES — 1963

Map labels include: Shop, Chestnut Hol, Elswick Hol, Beaver Bottom (1375), Cedar Grove Ch, Federal, Gas Well, Gaging Sta, Water Tank, City Sch, Sulphur Springs Ch, Drive-in Theater, Fish Hatchery (Inactive), Pinnacle Rock, Blue Head Rock, Elkhorn City, Elkhorn Creek, Middle Br, Upper Br, Lower Br, Little Island Br, Big Island Br, Laurel, and JEFFERSON MOUNTAIN.

SITE-5
25 AC.

x1990

INDUSTRIAL RESOURCES
PIKE COUNTY, KENTUCKY

Prepared by
The Kentucky Department of Commerce
in cooperation with
The Pike County Chamber of Commerce, Inc.

1972

TABLE OF CONTENTS

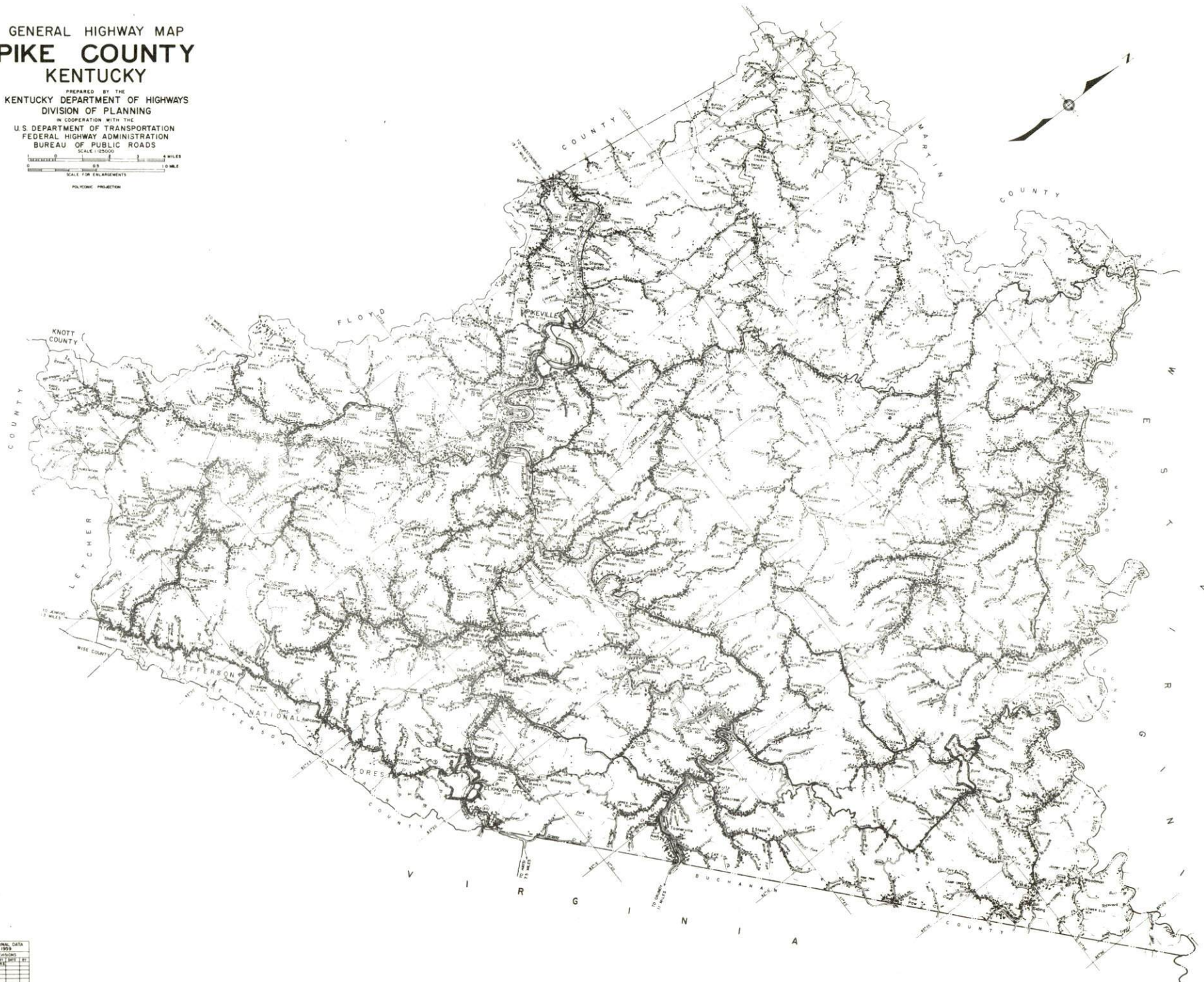
<u>Chapter</u>	<u>Page</u>
INDUSTRIAL SITES	i
PIKE COUNTY, KENTUCKY - A RESOURCE PROFILE	1
THE LABOR MARKET	5
Population Trends	5
General Employment Characteristics, 1970	5
Manufacturing Employment Trends by Industry	5
Pike County Manufacturing Firms, Their Products and Employment	6
Wage Rates for Selected Occupations	7
Labor Organizations	7
Current and Future Labor Supply	7
Total Personal Income	8
Per Capita Personal Income	8
EDUCATION	9
Public Schools	9
Parochial School	9
Vocational Schools	10
Colleges and Universities	10
TRANSPORTATION	12
Rail	12
Truck Service	12
Air	13
Bus	13
Taxi	13
Rental Services	13
POWER AND FUEL	14
Electricity	14
Natural Gas	14
WATER AND SEWERAGE	15
Water	15
Sewerage	16

<u>Chapter</u>	<u>Page</u>
LOCAL GOVERNMENT	18
City	18
County	18
Assessed Value of Property, 1971	18
Local General Property Tax Rates Per \$100 of Assessed Valuation, 1971	18
Utilities Gross Receipts Tax for Schools	19
Planning and Zoning	19
Safety	19
Police	19
Fire	19
Rescue Service	19
Sanitation	20
HEALTH	21
Hospitals	21
Nursing Homes	21
Public Health	22
OTHER LOCAL FACILITIES	24
Communications	24
Library Services	25
Religious Institutions	25
Financial Institutions	25
Hotels and Motels	26
Clubs and Organizations	26
RECREATION	27
Local	27
Area	27
AGRICULTURE - NATURAL RESOURCES - CLIMATE	29
Agriculture	29
Natural Resources	29
Climate	29
HISTORY	30

GENERAL HIGHWAY MAP
PIKE COUNTY
 KENTUCKY

PREPARED BY THE
 KENTUCKY DEPARTMENT OF HIGHWAYS
 DIVISION OF PLANNING

IN COOPERATION WITH THE
 U.S. DEPARTMENT OF TRANSPORTATION
 FEDERAL HIGHWAY ADMINISTRATION
 BUREAU OF PUBLIC ROADS

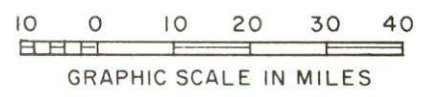
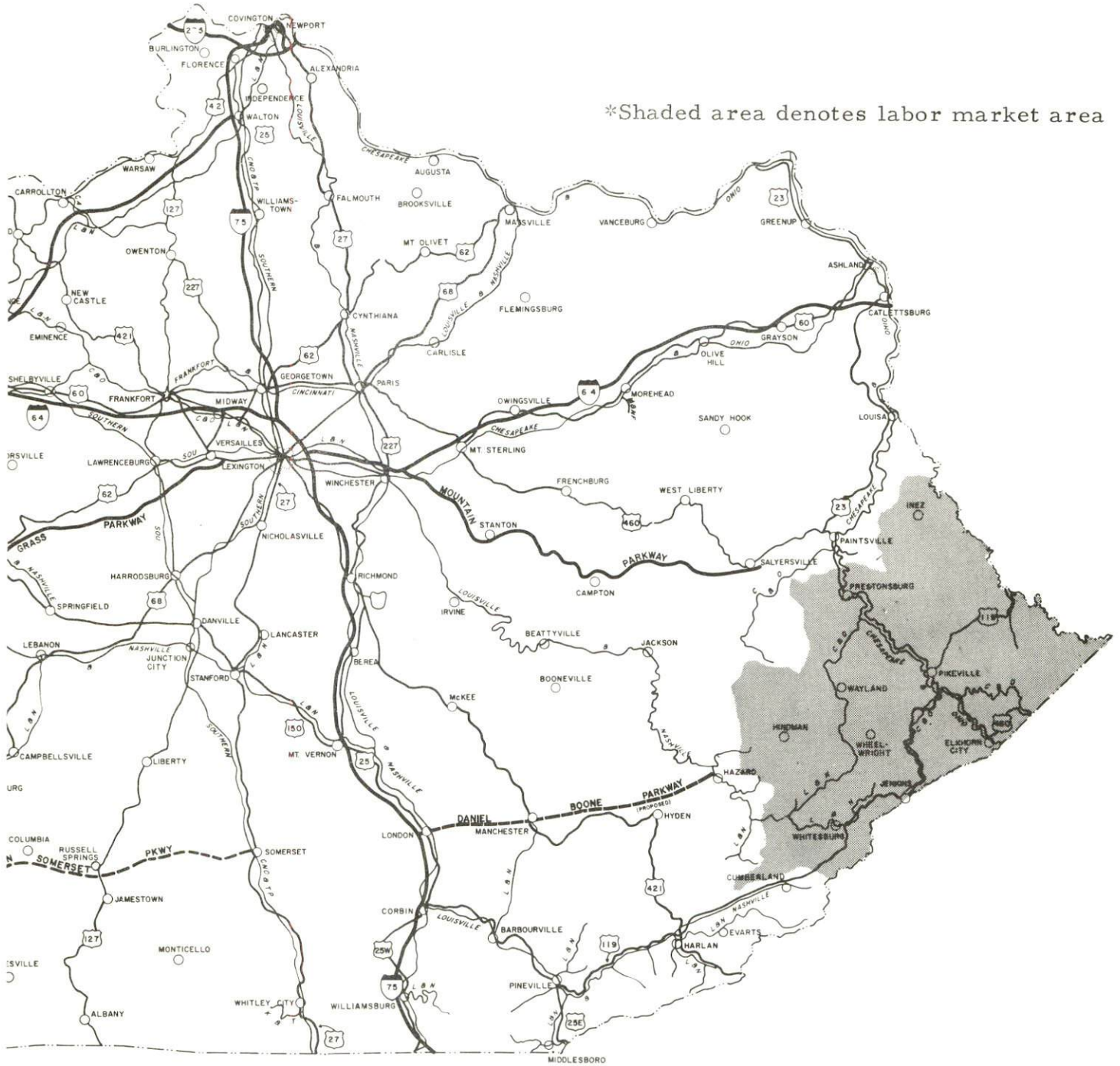


ORIGINAL DATA
 1953

REVISIONS	DATE	DESCRIPTION

PIKE COUNTY LABOR MARKET AREA

*Shaded area denotes labor market area



PIKE COUNTY, KENTUCKY - A RESOURCE PROFILE

Location

Pike County is located in the Big Sandy Valley in the extreme eastern portion of Kentucky. It lies 150 miles southeast of Lexington, 112 miles southwest of Huntington, West Virginia, and 200 miles northeast of Knoxville, Tennessee. Pike County is the largest county in Kentucky, covering an area of 786 square miles, and the largest underground bituminous coal producing county in the United States. One of the greatest bituminous coal fields in the United States, most of which is still untapped, is located here. The Kentucky-Virginia state line forms the southeastern boundary of the county; the Kentucky-West Virginia state line bounds the county on the northeast.

Pikeville, the county seat, was chosen as one of the nation's first group of 75 Model Cities and is the smallest city in the nation to be designated a Model City. The goal of the model-city plan is to turn Pikeville into a regional trade and services center for the 200,000 persons who reside within a 40-mile radius of the county.

Pike County had a 1970 population of 61,059 and Pikeville had a 1970 population of 4,576. Elkhorn City, 22 miles southeast of Pikeville, had a 1970 population of 1,081. Elkhorn City is only 3 miles from Breaks Interstate Park which has been called the "Grand Canyon of the South" and contains 2,600 acres.

The Economic Framework

Total employment in Pike County averaged 14,400 in 1970 with agriculture providing 700 jobs, manufacturing 200, trade and services 3,425, government 2,500, and mining and quarrying 5,340. Major industrial products are carbonated beverages and concrete.

Per capita income in the county in 1969 was \$1,770. Between 1959 and 1969, per capita personal income in the county increased approximately 103 percent.

The Pike County labor market area includes Pike, the four adjoining Kentucky counties, Buchanan County, Virginia, and Mingo County, West Virginia. In 1970, employment in the Kentucky portion of the labor market area totaled 32,300 jobs with agriculture providing 1,100, manufacturing 1,310, trade and services 6,510, government 6,700, and mining and quarrying 10,980. Industrial employment in this area has increased 135 percent or 736 jobs since 1961 with sharpest gains in the apparel and leather industries.

Despite important industrial gains in recent years the area still has a deficit of 12,417 manufacturing jobs when measured against the national industrial employment-population ratio. This indicates an area where the potential for additional manufacturing production is excellent.

Resources for Growth

1. There is a current estimated labor supply of 5,815 men and 11,300 women available for industrial jobs in the labor market area. In addition, 8,900 young men and 8,300 young women will become 18 years of age by 1978 and potentially available for work. Also the current labor supply would be increased by the number of men and women in the adjoining Virginia and West Virginia counties who are available for industrial jobs.
2. Three railroads serve Pike County - C&O-B&O, Norfolk & Western, and Clinchfield - with a variety of services. The county has adequate trucking service. Pikeville is the highway-hub for the 13 Appalachian states. Three major U. S. Highways and one Kentucky highway run through Pikeville. U. S. Highways 23, 460, 119, and Kentucky Highway 80 are being widened and improved as part of the Appalachian Highway System Development. The Mountain Parkway is only 50 miles to the northwest. The Pikeville Airport has a 3,000-foot crushed, rolled stone runway capable of accommodating light aircraft. Commercial air service is available at Tri-State Airport, Kenova, West Virginia, only 103 miles distant.
3. Kentucky Power Company provides electric power to Pikeville, Elkhorn City, and Pike County. Natural gas is furnished in Pikeville by the Pikeville Utilities Department, whose source of supply is the Columbia Gas Transmission Company and local suppliers; Elkhorn City is served by the Lyda Gas Company. The raw water supply is adequate for additional growth.
4. Industrial sites - One available industrial site is located in the vicinity of Pikeville and one site is located at Elkhorn City.
5. Education is an important part of Pike County's future development. Two school systems operate in Pike County, and Pikeville is the home of Pikeville College. Prestonsburg Community College is located within 30 miles of the county.

Pikeville College is an accredited four-year, church-affiliated liberal arts college. The well-known "College on the Hill" has opened up the future for many young eastern Kentuckians. It has educated most of the teachers within a five-county radius of Pike County and continues to serve the area with an ever broadening curriculum and competent faculty. The college is also meeting the challenge of the Model City program by bearing much of the responsibility for the extensive and innovative educational programs which make up a vital part of model city planning.

The two Pike County Vocational Extension Centers are located in Belfry and Millard and offer training in 5 and 4 different courses, respectively. The Mayo Area Vocational School is only 43 miles from Pikeville and offers training in 25 different courses.

Community Programs for Improvement

Named as a Model City by the Department of Housing and Urban Development in 1967, Pikeville continued its growth and development with emphasis on social and educational projects such as exemplary vocational education, bringing vocational education to the elementary school level; a demonstration classroom at Pikeville College for special teacher training; a nurse's training program; the purchase and development of the county's first true industrial site; and many other projects.

The River Diversion Project has become symbolic of the whole Model City Program. This \$24 million plan to cut through Peach Orchard Mountain, rechannel the Levisa Fork of the Big Sandy River, and relocate the main line of the C&O Railroad and U. S. 23 out of downtown Pikeville, promises to revitalize the City of Pikeville as the region's trade and services center. The project will make available more than 400 acres of new land resulting from filling the old river channel and several surrounding small valleys which can be developed for industry, business, and residential use. A new four-lane connector highway built on the old railroad right-of-way will provide improved access to the city.

The project is now in the final design stage with the Kentucky Highway Department having agreed to design the highway and access roads. The balance of the project and the "cut" itself will be handled by the U. S. Army Corps of Engineers.

Also nearing implementation is a \$12 million urban renewal project, designed to remove the railroad from the center of town and remove much substandard housing along its path. Construction of a 100-unit public housing project is scheduled to start in early 1972.

Pikeville's new eight-story hospital was recently completed, providing 225 beds and such special units as cardiac care, intensive care, a mental health floor, six modern operating rooms, and a complete radiology department. A \$1 million public facility loan, and funds from many other sources, including over \$400,000 raised by public subscription, made possible the \$7.2 million structure.

Dynamic leadership by the county government is also bringing improvements to large rural areas of the county: four new water districts, either planned or underway; a solid waste disposal system; rapid development of the more than 90 miles of Appalachian Development Highways in the county; a new youth camp; roadside recreation areas; branch courthouses with complete governmental services; a new juvenile detention center; improved police communication system; and many other programs.

Elkhorn City's recent community improvement includes street lights for Highway 80. Under construction is extension of Appalachian Highway. Planned improvements include 50 units of public low-rent housing, extension of water and sewer systems and a new secondary sewage treatment plant.

Recreation, Entertainment and Livability

Pike County is located in the heart of the eastern mountains region which draws vacationers from all over the nation.

Breaks Interstate Park which lies partly in Pike County at the Kentucky-Virginia border, provides 2,600 acres of breathtaking scenery. It has the largest river canyon east of the Mississippi River. The facilities include lodge, camp sites, Olympic-size swimming pool. The recreational facilities include: swimming, horseback riding, hiking, fishing, and picnicking.

Jenny Wiley State Resort Park, 30 miles distant, provides 1,700 acres of water recreation on Dewey Lake, surrounded by 12,000 acres of forest. The facilities include a lodge, cottages, camping areas, sky lift, and amphitheater. The recreational facilities include: boating, swimming, fishing, golfing, hiking, riding, shuffleboard, and picnicking.

Fishtrap Dam and Reservoir, which lies in Pike County, has a dam 1,100 feet long and 195 feet high and the reservoir area covers 16,200 acres. The recreational facilities include boating, fishing, picnicking, and swimming.

Jefferson National Forest, which covers 550,626 acres of forest, lies in Letcher and Pike Counties, Kentucky, and in Virginia. The facilities include camping, hunting, and fishing.

THE LABOR MARKET

POPULATION TRENDS ^{1/}

Area	Population			Percent Change	
	1970	1960	1950	1960-70	1950-60
Elkhorn City	1,081	1,085	1,349	- 0.4	-19.6
Pikeville	4,576	4,754	5,154	- 3.7	- 7.8
Labor Market Area	144,188	167,571	206,173	-14.0	-18.7
Pike County	61,059	68,264	81,154	-10.6	-15.9
Floyd County	35,889	41,642	53,500	-13.8	-22.2
Knott County	14,698	17,362	20,320	-15.3	-14.6
Letcher County	23,165	30,102	39,522	-23.0	-23.8
Martin County	9,377	10,201	11,677	- 8.1	-12.6

GENERAL EMPLOYMENT CHARACTERISTICS, 1970 ^{2/}

Major Employment Group	Employment	
	Pike County	Labor Market Area
TOTAL	14,400	32,300
Agricultural	700	1,100
Nonagricultural	13,700	31,200
Manufacturing	200	1,312
Trade and Services	3,424	6,508
Government	2,500	6,700
Mining & Quarrying	5,341	10,980

MANUFACTURING EMPLOYMENT TRENDS BY INDUSTRY JUNE 1971 AND 1961 ^{3/}

Industry	Pike County			Labor Market Area		
	1971	1961	%Change	1971	1961	%Change
TOTAL	221	254	- 13.0	1,281	545	+135.0
Food & kindred products	112	102	+ 9.8	179	188	- 4.8
Apparel, textiles, leather	0	0	- 0	542	0	-
Lumber & furniture	32	118	- 72.9	221	210	+ 5.2
Printing, publishing, paper	10	22	- 54.5	30	40	- 25.0
Chemicals, petroleum, coal, rubber	3	0	0	42	42	-
Stone, clay & glass	63	11	+472.7	78	37	+110.8
Machinery & metal products	0	0	0	179	27	+563.0
Other	1	1	-	10	1	+900.0

PIKE COUNTY MANUFACTURING FIRMS,
THEIR PRODUCTS AND EMPLOYMENT ^{4/}

<u>Firm</u>	<u>Product</u>	<u>Employment</u>		
		<u>Total</u>	<u>Male</u>	<u>Female</u>
<u>Pikeville</u>				
Adams Construction Corp.	Bituminous concrete, concrete ready mix	36	30	6
Big Sandy Electric & Supply Co.	Coils for electric motors, fabricated metal products	14	12	2
Coca-Cola Bottling Co. of Pikeville	Carbonated beverages	28	25	3
East Kentucky Beverage Co., Inc.	Soft drinks	118	110	8
Keene Garage Welding Shop	Machine shop	4	4	0
Pike County News	Newspaper, job printing	10	5	5
<u>Elkhorn City</u>				
Elkhorn Stone Co.	Concrete, dry mixture, bituminous concrete	26	25	1
Grayson Hylton Sawmill	Lumber	5	5	0
<u>Robinson Creek</u>				
Colley Block Co., Inc.	Concrete block, septic tanks	31	30	1

WAGE RATES FOR SELECTED OCCUPATIONS
PIKEVILLE, KENTUCKY ^{5/}

<u>Classification</u>	<u>Wages Per Hour</u>		
	<u>Starting</u>	<u>Maximum</u>	<u>Prevailing</u>
<u>Service Employees</u>			
Electrician (Class-A)	\$2.50	\$5.18	\$4.00
Laborer	1.60	4.00	2.50
Machinist	2.00	5.18	3.00
Mechanic, Maintenance	2.50	5.18	3.00
Truck Driver, Industrial (Class-A)	2.00	4.73	3.75
<u>Office Employees</u>			
Bookkeeper	\$1.60	\$2.00	\$1.80
File Clerk	1.60	1.60	1.60
Receptionist	1.60	1.75	1.60
Secretary	1.60	2.00	1.75
Typist	1.60	1.75	1.60

LABOR ORGANIZATIONS

<u>Union</u>	<u>Representing workers at:</u>
United Mine Workers	Coca-Cola Bottling Company
United Mine Workers	East Kentucky Beverage Company

CURRENT AND FUTURE LABOR SUPPLY -
PIKE COUNTY LABOR MARKET AREA

<u>Area</u>	<u>Current Labor Supply, 1971 ^{6/}</u>			<u>Future Labor Supply by 1978 ^{7/}</u> <u>(Becoming 18 Years of Age)</u>		
	<u>Total</u>	<u>Male</u>	<u>Female</u>	<u>Total</u>	<u>Male</u>	<u>Female</u>
Labor Market						
Area	17,115	5,815	11,300	17,205	8,899	8,306
Pike County	6,115	1,579	4,536	7,181	3,702	3,479
Floyd County	4,360	1,421	2,939	4,156	2,187	1,969
Knott County	2,419	1,154	1,265	1,877	968	909
Letcher County	2,957	1,093	1,864	2,789	1,414	1,375
Martin County	1,264	568	696	1,202	628	574

TOTAL PERSONAL INCOME 8/

<u>Area</u>	<u>1969</u>	<u>1959</u>	<u>% Change</u>
Pike County	\$ 115,258,000	\$ 55,327,000	+108.3
Labor Market Area	250,534,000	132,145,000	+ 89.6
Kentucky	9,202,000,000	4,655,000,000	+ 97.6

PER CAPITA PERSONAL INCOME 9/

<u>Area</u>	<u>1969</u>	<u>1959</u>	<u>% Change</u>
Pike County	\$1,770	\$ 874	+102.5
Labor Market Area	\$890 to 1,770	\$421 to 953	NA
Kentucky	2,847	1,552	+ 83.4

EDUCATION

Public Schools

	<u>Pikeville Independent</u>	<u>Pike County</u>
Total Enrollment	1,253	15,192
Elementary	643	10,674
High School	610	4,518
Student-Teacher Ratio	21-1	23-1
Elementary	21-1	24-1
High School	20-1	20-1
State Rating of High School	Standard	Basic (4) Standard (5)
Percent High School Graduates to College	77.3	28.4
Current Expenditures Per Pupil	\$511.43	\$442.44
Bonded Indebtedness, June 30, 1971	\$734,000	\$5,765,000

Parochial School

	<u>Parochial</u>
Total Enrollment	40
Elementary	40
Student-Teacher Ratio	20-1
Elementary	20-1

Vocational Schools

Nearest Area School

Location	Mayo Area Vocational School
Miles Distant	Paintsville, Kentucky
Curriculum	43
	Accounting Junior Management, Data Processing, General Clerical, Secretarial-Steno, Practical Nursing, Electronics (Communications), Electronics (Industrial), Electronics (Technology), Highway Technology, Instrumentation, Technical Drafting, Tool & Die Design, Auto Body Repair, Auto Mechanics, Carpentry, Commercial Foods, Cosmetology, Diesel Mechanics, Drafting, Electricity, Machine Shop, Mine Machinery Machines, Printing, Radio & TV Repair, Welding

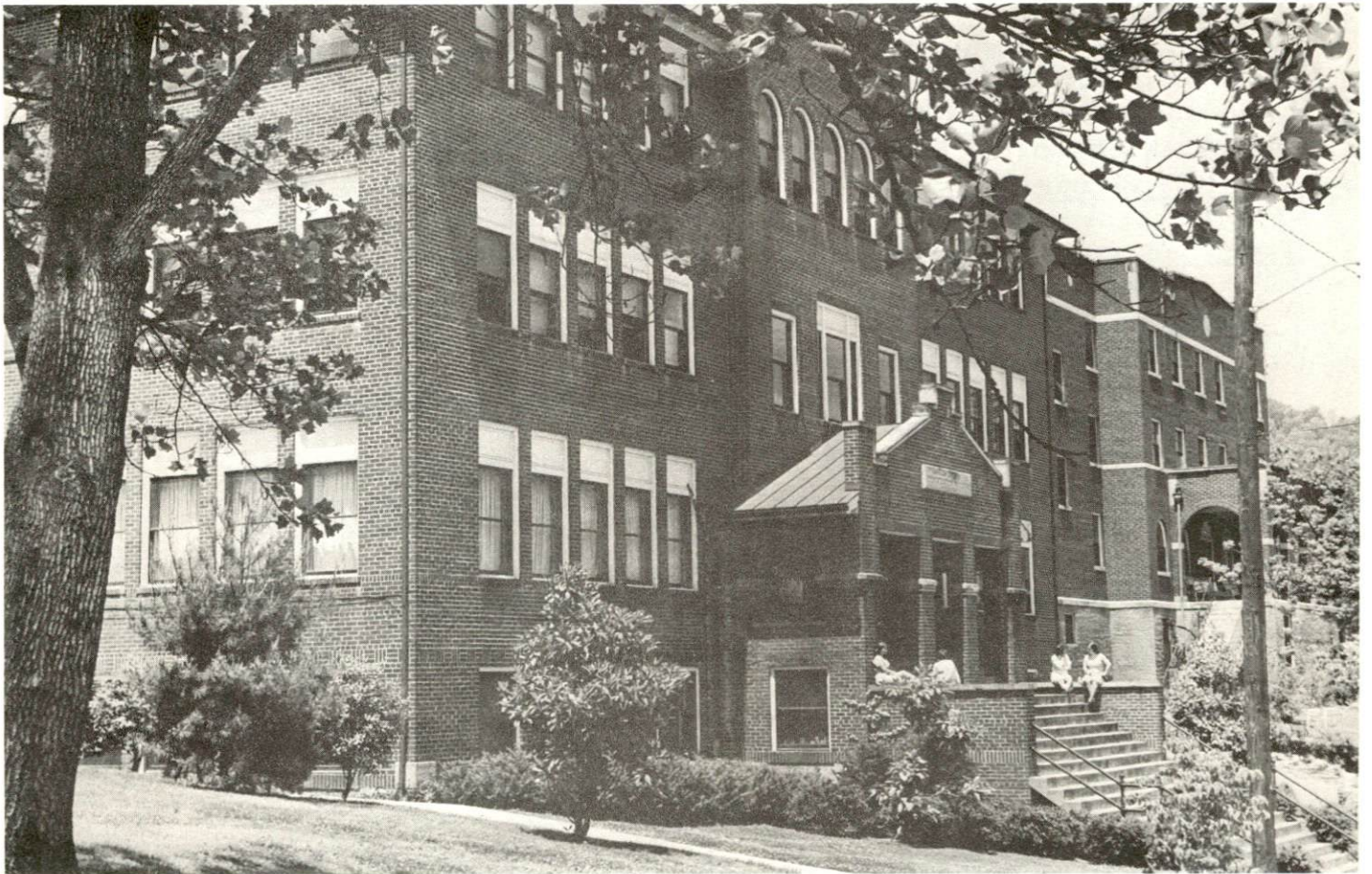
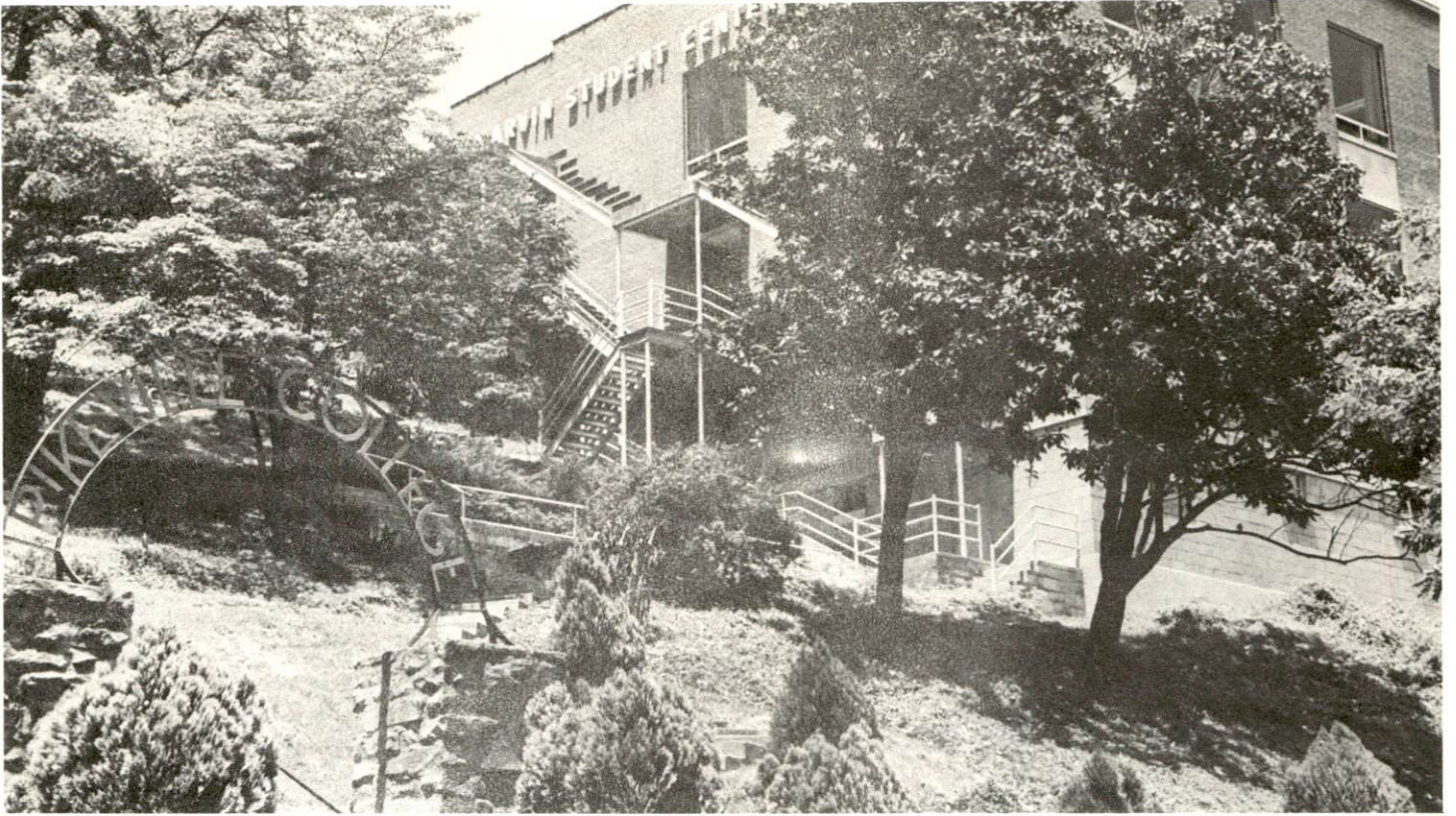
Nearest Extension Centers

Location	Pike County Extension Center	Pike County Extension Center
Curriculum	Belfry	Millard
	Auto Mechanics	Auto Mechanics
	Drafting	Carpentry
	Electricity	Drafting
	Machine Shop	Electricity
	Welding	

Colleges and Universities

<u>Name</u>	<u>Area - Within 50 Miles</u>		<u>Highest Degree Conferred</u>
	<u>Location</u>	<u>Enrollment</u>	
Pikeville College	Pikeville	794	Baccalaureate
Prestonsburg Community College	Prestonsburg	408	Associate
Alice Lloyd College	Pippa Passes	268	Associate

PIKEVILLE COLLEGE



POWER AND FUEL

Electricity

Company serving Pikeville, Elkhorn City and Pike County - Kentucky Power Company
Source of power - Kentucky Power Company
Total generating capacity - 1,080,000 KW
Industrial rates furnished by - Kentucky Power Company, Pikeville Office

Natural Gas

Company serving Pikeville - Pikeville Utilities Department
Source of supply - Columbia Gas Transmission Company and local suppliers
Size of transmission lines - 4 and 6 inches
Distribution lines - 2, 3, and 4 inches
Btu content - 1,180
Distribution pressure - 15 to 30 psi

Rates -

First	2,000 cu. ft.	\$2.61 (Minimum Bill)
Next	3,000 cu. ft.	1.03 per 1,000 cu. ft.
Next	15,000 cu. ft.	.93 per 1,000 cu. ft.
Over	20,000 cu. ft.	.85 per 1,000 cu. ft.

Company serving Elkhorn City - Lyda Gas Company, Inc.
Source of supply - One private gas well (limited supply - supply available to serve only a limited number of residential customers)
Size of transmission lines - 8-inch
Distribution lines - 3 and 5 inches
Btu content - 1,100
Specific gravity - .60
Distribution pressure - 8 ounces

Rates -

First	3,000 cu. ft.	\$.83 1/3 per 1,000 cu. ft.
Next	5,000 cu. ft.	.75 per 1,000 cu. ft.
Next	5,000 cu. ft.	.65 per 1,000 cu. ft.
Next	5,000 cu. ft.	.55 per 1,000 cu. ft.
All over	18,000 cu. ft.	.50 per 1,000 cu. ft.

WATER AND SEWERAGE

Water

Company serving Pikeville - Pikeville Utilities Department
 Source - Levisa Fork of Big Sandy River
 Treatment plant capacity - 1,500,000 gallons per day
 Average daily consumption - 972,000 gallons
 Peak daily consumption - 1,016,000 gallons
 Type treatment - settlement, chlorination, coagulation of alum and lime,
 fluoridation
 Storage capacity - 1,510,000 gallons
 Size mains - 4, 6, 8, 10, and 12 inches
 Average pressure - 120 psi
 Average temperature - 60 degrees

MONTHLY WATER RATES FOR WHOLESALE AND INDUSTRIAL CONSUMERS

First	2,000 gallons	\$2.90 (Minimum)
Next	3,000 gallons	1.00 per M gallons
Next	5,000 gallons	.95 per M gallons
Next	10,000 gallons	.90 per M gallons
Next	20,000 gallons	.85 per M gallons
Next	20,000 gallons	.80 per M gallons
Next	20,000 gallons	.75 per M gallons
Next	20,000 gallons	.70 per M gallons
	100,000 to 300,000 gallons	.30 per M gallons
All over	300,000 gallons	.25 per M gallons

Company serving Elkhorn City - Elkhorn City Water Department
 Source - Russell Fork of Big Sandy River
 Treatment plant capacity - 480,000 gallons per day
 Average daily consumption - 85,000 gallons
 Peak daily consumption - 105,000 gallons
 Type treatment - settled, filtered, and chlorinated
 Storage capacity - 200,000 gallons
 Size mains - 2, 4, 6, and 8 inches
 Average pressure - 120 psi
 Average temperature - 50 degrees

MONTHLY WATER RATES FOR WHOLESALE
AND INDUSTRIAL CONSUMERS

First	2,000 gallons	\$5.00 (Minimum)
Next	2,000 gallons	1.00 per M gallons
Next	4,000 gallons	.80 per M gallons
Next	4,000 gallons	.70 per M gallons
Next	4,000 gallons	.60 per M gallons
Next	4,000 gallons	.50 per M gallons
Next	20,000 gallons	.40 per M gallons
Over	40,000 gallons	.30 per M gallons

Name of water district - Sandy Valley Water District
 Area served - Lower Pauley Addition (Pike County); Mare Creek (Floyd County) covering approximately 31 square miles
 Date when water district began operating - February 1969
 Source of supply of treated water - City of Pikeville - Utilities Department
 Average amount of water used in a 24-hour period - 177,000 gallons
 Peak amount of water used in a 24-hour period - 208,000 gallons
 Storage capacity - 300,000 gallons
 Size mains - 12, 8, and 6 inches

Rates:

First 2,000 gallons (Minimum)

5/8-inch meter \$ 4.50	Next	3,000 gallons \$1.70 per M gallons
3/4-inch meter 5.00	Next	15,000 gallons 1.20 per M gallons
1-inch meter 6.00	Next	30,000 gallons .80 per M gallons
1 1/2-inch meter 7.00	Next	50,000 gallons .60 per M gallons
2-inch meter 8.00	All over	100,000 gallons .35 per M gallons
3-inch meter 10.00		
4-inch meter 15.00		

Surface water sources - Big Sandy River - Levisa Fork and Russell Fork
 Average discharge - Levisa Fork at Pikeville - 1,362 cfs (33 years, USGS, unadjusted); Russell Fork at Elkhorn City - 639 cfs (10 years, USGS, unadjusted)
 Expected ground water yield - 50 to 200 gpm over county except for small portion on southern boundary which yields 5 to 50 gpm

Sewerage

Company serving Pikeville - Pikeville Utilities Department
 Design capacity - 800,000 gallons per day
 Average daily flow - 348,408 gallons; Treatment - primary and secondary
 Type treatment - clarifiers and drying beds
 Treated effluent discharged into - Big Sandy River
 Size of sanitary mains - 6, 8, 10, 12, 15, and 30 inches
 Size of storm mains - 30-inch
 Rates - 85 percent of monthly water bill

Company serving Elkhorn City - Elkhorn City Sewer Department
Design capacity - 150,000 gallons per day
Average daily flow - 50,000 gallons
Treatment - primary
Type treatment - aeration, settled, chlorinated
Treated effluent discharged into - Russell Fork of Big Sandy River
Size of sanitary mains - 4, 6, and 8 inches
Rates - 125 percent of monthly water bill (\$6.25 minimum)

LOCAL GOVERNMENT

City

Pikeville

Structure - Mayor - 4-year term; 4 commissioners - 2-year terms; city mgr.
 Budget 1971-72 - General Fund \$385,800; Water and Sewer Fund \$282,400;
 Gas Fund \$400,000
 Fees and licenses - Business license 1 1/2 percent of net profit per year,
 occupational license tax 1 1/2 percent of gross wages per year

Elkhorn City

Structure - Mayor - 4-year term; 6 councilmen - 2-year terms
 Budget 1971 - General Fund \$33,800; Water and Sewer Fund \$55,910
 Fees and licenses - Business license varies from \$5 to \$1,000 per year,
 auto license \$5 per year, unloading license \$50 per year

County

Structure - County Judge - 4-year term; 8 magistrates - 4-year terms
 Budget 1971-72 - General Fund \$346,696; Road Fund \$152,000

Assessed Value of Property, 1971

<u>Classes of Property*</u>	<u>Pikeville</u>	<u>Elkhorn City</u>	<u>Pike County</u>
Real Estate & Tangibles	\$41,092,323	\$5,277,425	
Real Estate -			\$163,632,637
Tangibles			87,072,237
Public Service	5,326,803	NA	63,326,835 (1970)

Local General Property Tax Rates Per \$100 of Assessed Valuation, 1971 ^{12/}

<u>Taxing Unit**</u>	<u>Pikeville</u>	<u>Elkhorn City</u>	<u>Pike County</u>
State	\$.015	\$.015	\$.015
County	.1925	.1925	.1925
School	.566	.494	.494
City	.170	.200	
Total	\$.9435	\$.9015	\$.7015

*Property assessed at 100 percent of fair value.

**Manufacturing machinery, raw materials inventories and goods in process inventories are not subject to local tax. State rate is only \$0.15 per \$100.

Utilities Gross Receipts Tax for Schools

Pike County levies a 3 percent tax on utilities receipts for schools. This tax is paid by all consumers of utilities. Exempted are receipts from utilities services that are resold and the receipts from the sale of energy producing fuels that exceed 3 percent of the cost of production in manufacturing, processing, mining or refining.

Planning and Zoning

Agency - Pikeville Planning and Zoning Commission
Plans completed - Neighborhood Analysis
Codes adopted - Building, Housing, Plumbing, Electric, Fire, and Gas

Agency - Pike County Planning and Zoning Commission
Plans completed - Base Map, Existing Land Use Map, Existing Land Use Analysis (Population and Economic), Subdivision Regulations, Zoning Ordinance (Regulations)

Safety

<u>Police</u>	<u>Pikeville</u>	<u>Elkhorn City</u>	<u>Pike County</u>
Total staff	9	3	10
Radio-patrol cars	2	1 radio phone	12

Fire

American Insurance Association Fire Rating	7 and 9	9	
Full-time staff	5	1	
Volunteers	20	12	
Equipment:			
1,000 gpm pumper	1 (on order)		
750 gpm pumpers	2	1	
500 gpm pumpers	1	1	
1,000-gallon tanker	1		

Rescue Service

Pikeville Volunteer Fire Department Rescue Squad
Number of volunteers - 12
Equipment - resuscitator, oxygen, cutting tools, panel truck, ropes, portable generator
Personnel training - first aid

Pike County Emergency and Rescue Squad, Inc.

Number of volunteers - 35

Equipment - 1969 heavy duty truck, 1964 pickup truck, 2 half-ton vans (all radio equipped); two 16-foot aluminum boats with 20 HP motors; 18-foot assault boat with 35 HP motor; 15 CB radio sets; rescue saw; two portable generators; port-a-power; hydraulic jack

Personnel training - Standard and first aid training, 3 trained skin divers, emergency medical technician course

Sanitation

	<u>Pikeville</u>	<u>Elkhorn City</u>
Type service	municipal	municipal
Cost:		
residential	\$2.50 monthly	\$1.50 monthly
business	according to volume	\$2.50 monthly
Collection frequency:		
residential	semi-weekly	weekly
business	daily	semi-weekly
Trash pickup:		
residential	semi-weekly	
business	collection frequency	
Disposal method	sanitary land fill	sanitary land fill

HEALTH

Hospitals

General Hospitals

The Methodist Hospital of Kentucky; Pikeville, Kentucky - 225 beds

General hospital facilities - 6 operating rooms, emergency room, X-ray, pathology, laboratory, electrocardiogram, mental health, in- and out-patient clinic, extended care, intensive care, coronary care, pediatrics, and obstetrics

Medical staff - 30 doctors, including urologist, pathologist, surgeon, OB-GYN, internists, cardiologist, radiologist, ophthalmologist, otolaryngologist, EENT, psychiatrist, 21 registered nurses, 65 licensed practical nurses

Williamson Appalachian Regional Hospital; South Williamson, Kentucky - 143 beds

General hospital facilities - 3 operating rooms; 4 X-ray diagnostic machines; facilities for radiation therapy with the exception of cobalt; fully equipped laboratory; EKG and EEG machines; fully equipped physical therapy department, 3 whirlpools and electromyography, pharmacy, Home Health Care, speech therapy, social service department

Medical staff - 42 physicians (27 active, 4 consulting, 11 courtesy), 32 registered nurses, 51 licensed practical nurses, Home of Kentucky and West Virginia Rehabilitation Counselors

Williamson Memorial Hospital; Williamson, West Virginia - 95 beds

General hospital facilities - 2 operating rooms, emergency rooms, X-ray, pathology, laboratory, EKG, out-patient clinic, obstetrics, pediatrics

Medical staff - 17 doctors (6 active, 5 consulting, 6 courtesy) 18 registered nurses, 18 licensed practical nurses

Nursing Homes

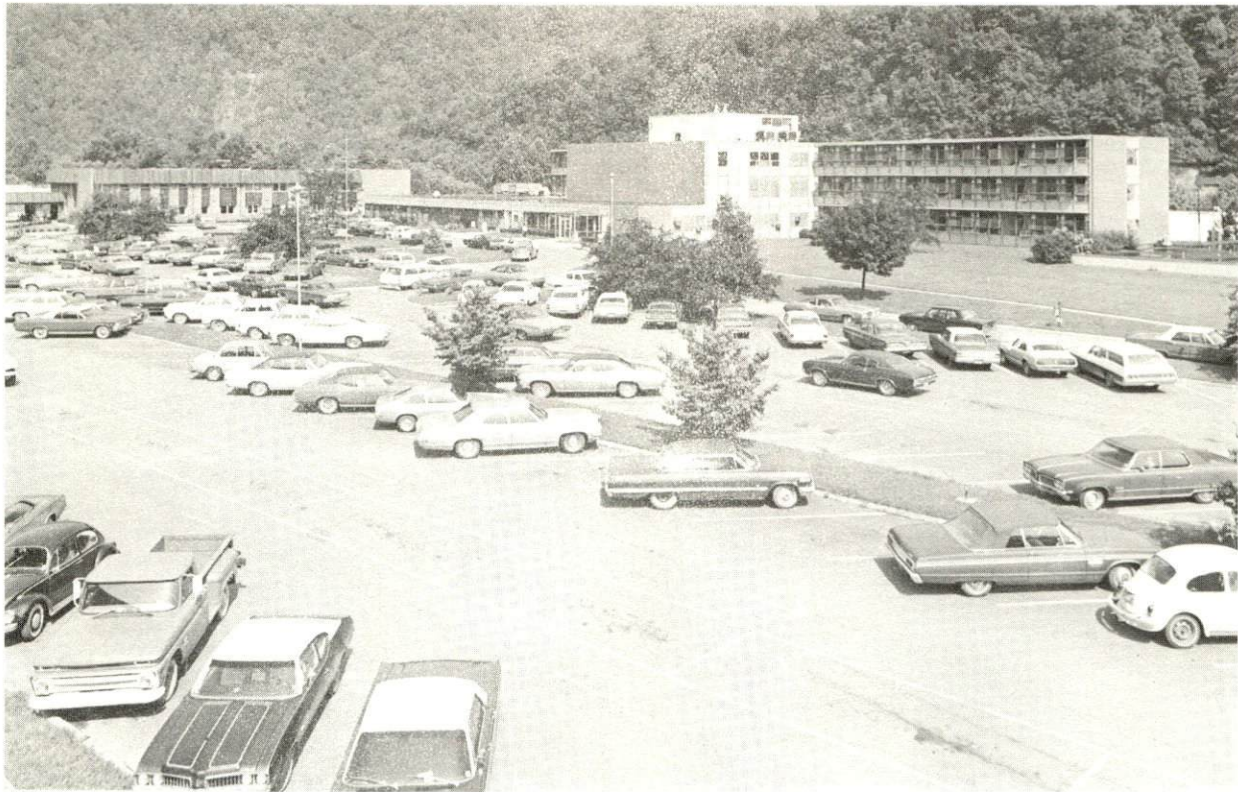
	<u>Number</u>	<u>Beds</u>
Extended care home	1	100

Public Health

Facility - Pike County Health Department

Staff - 1 health officer, 4 sanitarians, 6 registered nurses, 1 X-ray technician, 5 clerks, 1 nutritionist, 1 plumbing inspector

Budget 1971-72 - \$166,155



WILLIAMSON APPALACHIAN REGIONAL HOSPITAL



METHODIST HOSPITAL OF KENTUCKY

OTHER LOCAL FACILITIES

Communications

	<u>Pikeville</u>	<u>Elkhorn City</u>
Telephone -	South Central Bell	South Central Bell
Services -	Telephone Company Standard	Telephone Company Standard
Telegraph -	Western Union	Telephone to and from
Services -	Telephone	Pikeville
Postal - U. S. Post Office		
Class -	First	Second
Mail received -	3 times daily	2 times daily
Mail dispatched -	2 times daily	2 times daily
Newspapers -	Pike County News	Elkhorn City Enterprise
Weekly and circulation -	5,800	800
Other papers received from -	Huntington and Williamson, West Virginia; Louisville, Lexington and Ashland, Kentucky	Pikeville, Louisville and Lexington, Kentucky; Huntington, Bluefield and Williamson, West Virginia
Radio -	WLSI-AM; WPKE-AM and FM	
Stations received from -	Louisville, Kentucky; Cincinnati, Ohio	Pikeville, Louisville and Jenkins, Kentucky; Cincinnati, Ohio; Grundy and Bristol, Virginia
Television -		
Reception from -	Huntington and Charleston, West Virginia; Bristol, Tennessee	Huntington, Charleston, and Bluefield, West Virginia; Bristol and Oak Hill, Tennessee
Kentucky Educational Television -	Pikeville transmitter, Channel 22	Pikeville transmitter, Channel 22

Library Services

Pikeville

Public Libraries - Pikeville Public Library

Size collection - 25,000 volumes

Circulation for 6 months period - 20,000 volumes

Services - Records, TV, film projector, film strip and film strip projector, screen, copying machine, story hours (2 per week) meeting rooms, art

Private Libraries - O'Rear Robinson Library, Pikeville College

Size collection - 60,600 volumes

Special collections - Kentucky Civil War

Services - Periodicals, newspapers, microfilm, microfilm reader and printer, copying machine, tapes, records, record players, open to public for \$5 fee

Elkhorn City

Public Libraries - Elkhorn City Public Library

Size collection - 5,000 volumes

Circulation for 9-month period - 15,101 volumes

Services - Newspaper, magazines, records, films, projector, slides, record player, copying machine, meeting room, story hour

Religious Institutions

	<u>Pikeville</u>	<u>Elkhorn City</u>
Number of churches -	10	6
Denominations -	Baptist, Catholic, Christian, Church of God, Episcopal, Church of Christ, Methodist, Wesleyan, Presbyterian	Baptist Christian Church of God Methodist

Financial Institutions

<u>Bank</u>	<u>Statement as of December 31, 1971</u>	
	<u>Assets</u>	<u>Deposits</u>
Pikeville National Bank and Trust Company	\$51,525,518.00	\$45,094,153.00
First National Bank	36,308,194.00	33,120,820.00
Citizens Bank	28,422,119.00	24,891,490.00
<u>Savings and Loan Associations</u>	<u>Assets</u>	<u>Shared Accounts</u>
First Federal Savings & Loan	\$ 2,492,457.00	\$ 2,359,474.00

Hotels and Motels

Number - 8

Units - 287

Clubs and Organizations

Pikeville and Pike County

Business and Civic - Pike County Chamber of Commerce, Rotary Club, Kiwanis Club, Lions Club, Jaycees, PTA

Fraternal - Masons, IOOF, Shriners

Women's - Eastern Star, Rebekah Lodge, Woman's Club, Junior Woman's Club, Business and Professional Woman's Club, Beta Sigma Phi Sorority, DAR, WSCS, Homemakers, American Association of University Women, Licensed Practical Nurses Association

Youth - Boy Scouts, Girl Scouts, FFA, FHA, FTA, 4-H, Little League baseball and football, Babe Ruth League baseball

Other - American Red Cross, Sportsman's Club, Saddle Club, Mountain Mental Health Association, Pike County Tuberculosis Association, Pike County Bar Association, Hospital Guild, Medical Auxiliary, Ministerial Association, Historical Society, Band and Athletic Club

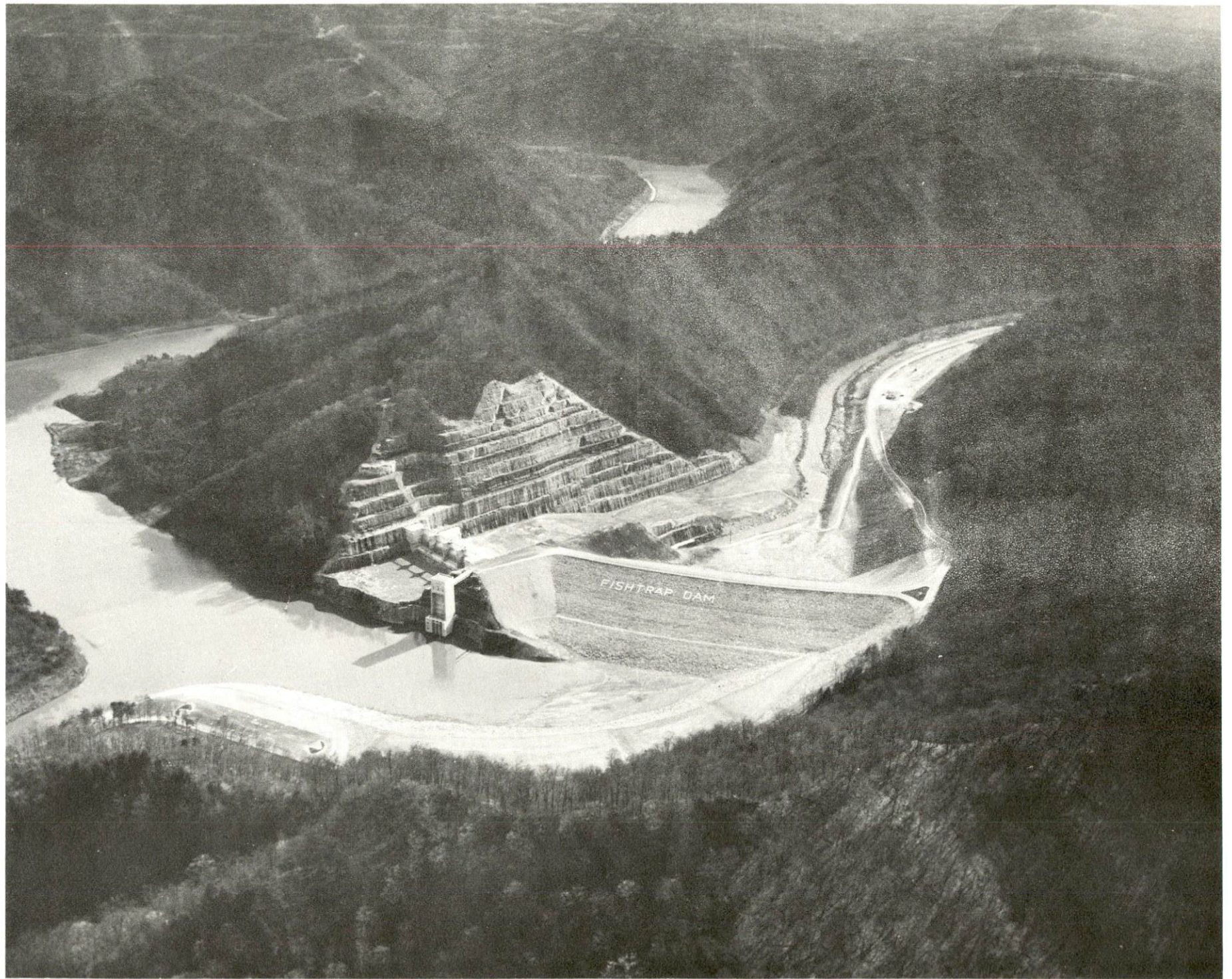
RECREATION

Local

	<u>Pikeville</u>	<u>Elkhorn City</u>
Public Recreation Facilities		
Parks -	1	1
Playgrounds -	2	2
Swimming pool -	1	
Tennis courts -	6 (Pikeville College)	
Baseball diamonds -	1	2
Football fields -	1	1
Other -	Youth recreation center	Basketball court
Private Recreation Facilities		
Country clubs -	1	1
Golf courses -	1	1 (9-hole)
Swimming pools -	1	1
Movie theaters -	1 indoor, 2 drive-ins	
Bowling lanes -	10	
Cultural Events		
Concert series		
Pikeville Little Theater		

Area (Within 30 miles)

Breaks Interstate Park
 Dewey Lake and Jenny Wiley State Resort Park
 Fishtrap Dam and Reservoir
 Jefferson National Forest



FISHTRAP DAM

AGRICULTURE - NATURAL RESOURCES - CLIMATE

Agriculture 13/

	<u>Pike County</u>	<u>Labor Market Area</u>
Total land area (acres)	503,040	1,351,040
Percent of area in farm land	13.9	16.5
Number of farms	788	2,662
Average size of farms (acres)	89.0	83.9
1964 value of all farm products	\$ 168,502	\$ 842,486
Value per farm	214	316
Total crop sales	55,446	243,590
Total livestock & livestock products	113,046	598,184
1969 agricultural production included:		
Corn (bu.)	26,000	128,000
Cattle and calves (number)	2,300	8,100
Hogs and pigs (number)	1,000	3,300
Milk production (1968) (lbs.)	2,900,000	5,630,000

Natural Resources

Principal mineral resources	Coal, limestone, petroleum, natural gas
Other mineral resources	Sand and gravel
Acres of commercial forest land	429,000
Most abundant tree species	Red oak, white oak, yellow poplar, hickory, beech, soft maple, and hard maple

Climate 14/

	<u>Pike County</u>
Temperature	
Annual mean (30-year record)	56.8 degrees
Average annual 1970	56.9 degrees
Record highest July, 1970* (9-year record)	95 degrees
Record lowest January, 1966 (9-year record)	-15 degrees
Seasonal heating degree-days (30-year record)	4,143
Precipitation	
Mean annual total (30-year record)	41.06 inches
Mean annual snow and sleet (33-year record)	16.5 inches
Total precipitation 1970	34.09 inches
Mean number days precipitation (25-year record) (.01 inches or more)	132
Average number days thunderstorms (27-year record)	46
Prevailing winds (9-year record)	West-southwest

*Also on earlier dates, months or years.

HISTORY

Pike County is located in the Big Sandy Valley of Kentucky's extreme eastern tip and is bordered by West Virginia to the northeast and by Virginia to the southeast. With an area of 786 square miles, it is the state's largest county. Tug Fork of the Big Sandy River flows along the northeastern boundary, and Russell and Levisa Forks of the Big Sandy run through the western half. Fishtrap Reservoir in the central area covers 15,000 acres. The land surface is broken and mountainous, but there is some fertile land in the river valleys. More than 85 percent of the area is forested, and there are large deposits of coal, oil and natural gas.

Settlers first came to the Pike County area in the 1780's, and by the turn of the century there was some agitation for a new county, though the area's rugged topography delayed the process. In 1821 Pike became Kentucky's seventieth county, its territory taken from Floyd County. It was named in honor of General Zebulon M. Pike, the famous explorer for whom Pike's Peak, Colorado, is also named.

A colorful part of the county's history centers around the infamous Hatfield-McCoy feud, which involved most of the people in Pike County and Logan County, West Virginia. Begun in 1882 when the Hatfields were accused of crossing the state line to vote in Kentucky, and Tolbert McCoy killed "Big Ellison" Hatfield at a polling place, the feud eventually took some 65 lives.

Pikeville, the county seat, is located in a narrow valley on land originally donated by Elijah Adkins. Pikeville College, a four-year liberal arts institution with approximately 800 students, is located here. The city's population was 4,576 in 1970.

In 1830 Pike County had 2,677 inhabitants. The figure grew to an all-time high of 81,154 in 1950, followed by a decline to 68,264 in 1960. Although the decline continued during the 1960's, it was at a slower rate, leaving 61,059 in 1970. Elkhorn City, in the county's southern part, has a population of over 1,000.

Mining and quarrying of the area's mineral wealth is the county's major source of employment. Pike County is the nation's greatest underground coal producer. Agriculture accounted for 700 of the county's 14,400 employed in 1970, with corn, cattle, hogs and milk the principal products. Manufacturing employment provided 200 jobs. East Kentucky Beverage Company, which makes soft drinks, is the county's largest firm.

Near Elkhorn City is beautifully scenic Breaks Interstate Park, which contains the largest river-formed canyon east of the Mississippi. The park covers 2,600 acres and offers full tourist and recreational facilities. Fishtrap Reservoir also offers abundant recreational opportunities.

Among Pike County's distinguished citizens is Carl D. Perkins, a member of the U. S. Congress for several years and Chairman of the House Committee on Health, Education and Labor.

SOURCES OF INFORMATION

- 1/ U.S. Department of Commerce, Bureau of the Census, Census of Population, 1950, 1960, 1970.
- 2/ Kentucky Department of Economic Security, Division of Research and Statistics.
- 3/ Kentucky Department of Economic Security, Number of Workers in Manufacturing Industries Covered by Kentucky Unemployment Insurance Law Classified by Industry and County, June 1971, June 1961.
- 4/ Kentucky Department of Commerce, 1972 Kentucky Directory of Manufacturers.
- 5/ Kentucky Department of Economic Security, Division of Employment Services, Pikeville Office.
- 6/ Kentucky Department of Economic Security, Kentucky Labor Supply Estimates by County, January 1971.
- 7/ Kentucky Department of Commerce, Future Labor Supply by 1978.
- 8/ University of Kentucky, Office of Development Services and Business Research, Total Personal Income for Kentucky.
- 9/ University of Kentucky, Office of Development Services and Business Research, Per Capita Income in Kentucky.
- 10/ The Chesapeake and Ohio Railway Company/The Baltimore and Ohio Railroad Company, Baltimore, Maryland.
- 11/ Point Express, Inc., Charleston, West Virginia.
- 12/ Kentucky Department of Revenue, Kentucky Property Tax Rates, 1971.
- 13/ U.S. Department of Commerce, Bureau of the Census, Census of Agriculture, 1964. U.S. Department of Agriculture and Kentucky Department of Agriculture, Kentucky Agricultural Statistics, 1970.
- 14/ U.S. Department of Commerce, Environmental Science Services Administration, Climatological Data, 1970.

All other information was obtained from governmental offices, local businesses and organizations.