

1971

# Industrial Resources: Rowan County - Morehead

Kentucky Library Research Collections  
Western Kentucky University, [spcol@wku.edu](mailto:spcol@wku.edu)

Follow this and additional works at: [https://digitalcommons.wku.edu/rowan\\_cty](https://digitalcommons.wku.edu/rowan_cty)

 Part of the [Business Administration, Management, and Operations Commons](#), [Growth and Development Commons](#), and the [Infrastructure Commons](#)

---

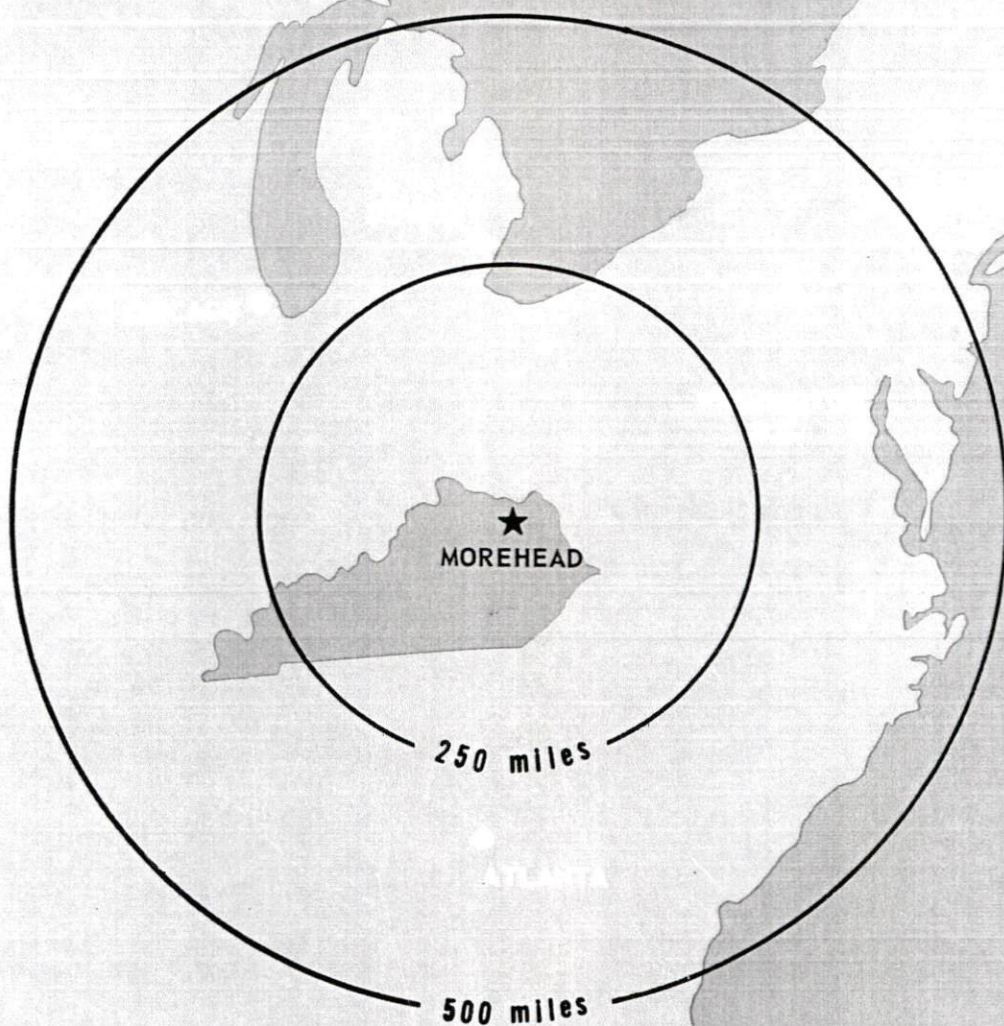
## Recommended Citation

Kentucky Library Research Collections, "Industrial Resources: Rowan County - Morehead" (1971). *Rowan County*. Paper 13.  
[https://digitalcommons.wku.edu/rowan\\_cty/13](https://digitalcommons.wku.edu/rowan_cty/13)

This Report is brought to you for free and open access by TopSCHOLAR®. It has been accepted for inclusion in Rowan County by an authorized administrator of TopSCHOLAR®. For more information, please contact [topscholar@wku.edu](mailto:topscholar@wku.edu).

# INDUSTRIAL RESOURCES

## ***MOREHEAD*** ***KENTUCKY***





MOREHEAD INDUSTRIAL SITES  
1971

For further information concerning the following sites, contact Mr. Don Wilson, Kentucky Utilities Company, Morehead, Kentucky 40351; or the Kentucky Department of Commerce, Frankfort, Kentucky 40601.

SITE #1: ACREAGE: 25 acres

LOCATION: 1 mile northeast of Morehead

ZONING: Industrial

HIGHWAY ACCESS: County road which borders site on west and south to U.S. 60

RAILROADS: Not rail served

WATER: Morehead Utility Plant Board

SIZE LINE: 6-inch

GAS: Morehead Utility Plant Board

SIZE MAIN: 4-inch

ELECTRICITY: Kentucky Utilities Company

SEWERAGE: Morehead Utility Plant Board; 8-inch line 1, 500 ft. from site

OPTIONED BY: Morehead Chamber of Commerce

SITE #2: ACREAGE: 40 acres

LOCATION: Site lies 1,800 feet southwest of city limits of Morehead.

ZONING: None

HIGHWAY ACCESS: McBrayer Road to Kentucky 519

RAILROADS: Not rail served

WATER: Morehead Utility Plant Board

SIZE LINE: 16-inch line 900 ft. from site

GAS: Delta Natural Gas Company

SIZE MAIN: 4-inch

ELECTRICITY: Kentucky Utilities Company

SEWERAGE: Morehead Utility Plant Board; 21-inch line 1, 500 ft. from site

OPTIONED BY: Morehead Chamber of Commerce

SITE #3: ACREAGE: 18 acres

LOCATION: 3 1/2 miles west-northwest of Morehead

ZONING: None

HIGHWAY ACCESS: Fronts on Kentucky 32; one-half mile from I-64 interchange

RAILROADS: Not rail served

WATER: Morehead Utility Plant Board

SIZE LINE: 6-inch line on site; 10-inch line 1 mile from site

GAS: Morehead Utility Plant Board

SIZE MAIN: 4-inch main one-fourth mile from site

ELECTRICITY: Fleming-Mason RECC

SEWERAGE: Package plant necessary

OWNERSHIP: City of Morehead

SITE #4: ACREAGE: 30 acres

LOCATION: 3 1/2 miles west-northwest of Morehead

ZONING: None

HIGHWAY ACCESS: Unimproved road from site to Kentucky 32; one-half mile to I-64 interchange

RAILROADS: Not rail served

WATER: Morehead Utility Plant Board

SIZE LINE: 6-inch line 800 ft. from site;  
10-inch line 1 mile from site

GAS: Morehead Utility Plant Board

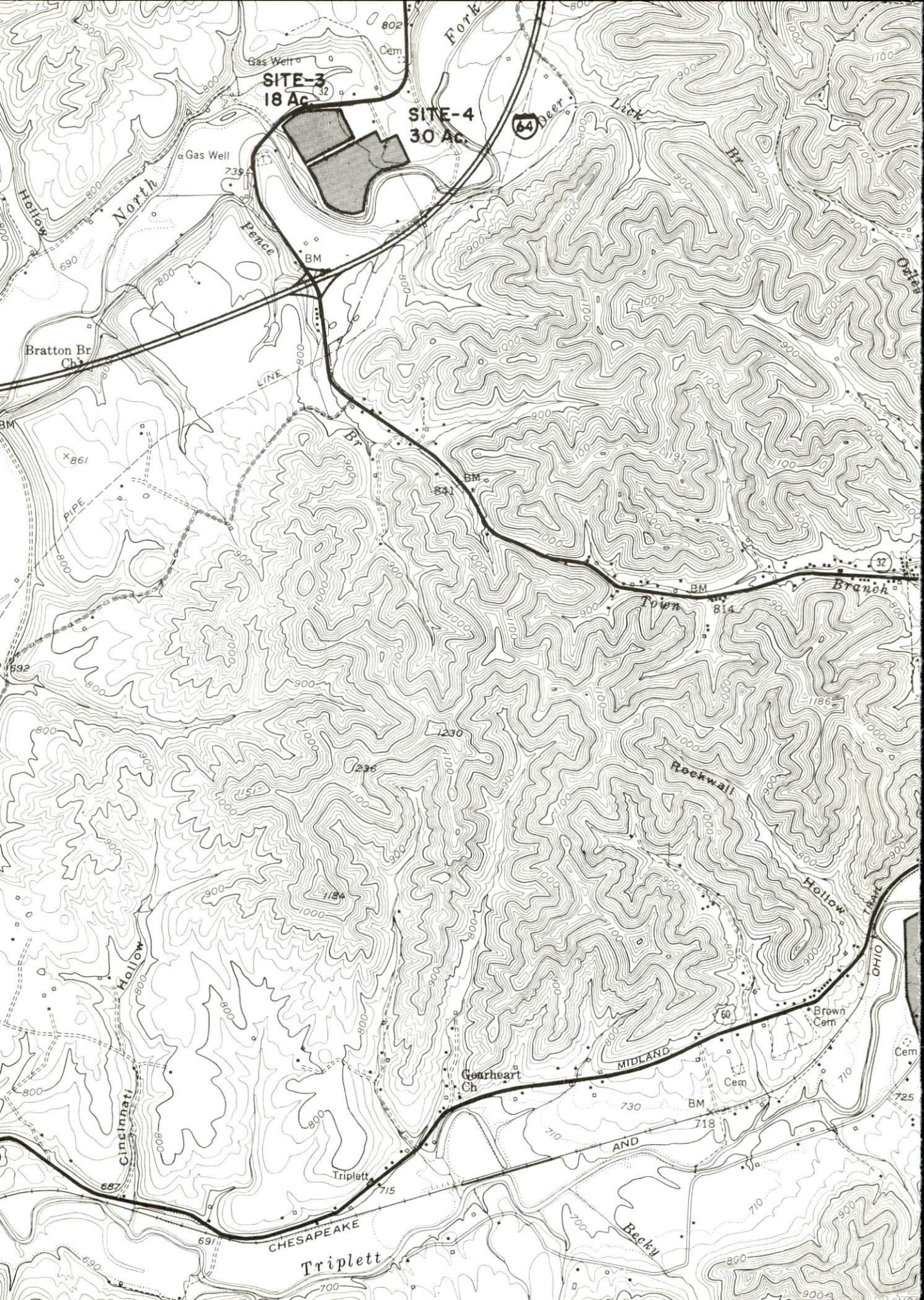
SIZE MAIN: 4-inch main 2,100 ft. from site

ELECTRICITY: Fleming-Mason RECC

SEWERAGE: Package plant necessary

OPTIONED BY: City of Morehead





SITE-3  
18 Ac.

SITE-4  
30 Ac.

64  
32

Bratton Br.  
Ch.

North

Pence

Fork

Lack

Br.

LINE

Br.

Town

Branch

Rockwall

Cincinnati  
Hollow

Hollow

OHIO

Gearheart  
Ch.

MIDLAND

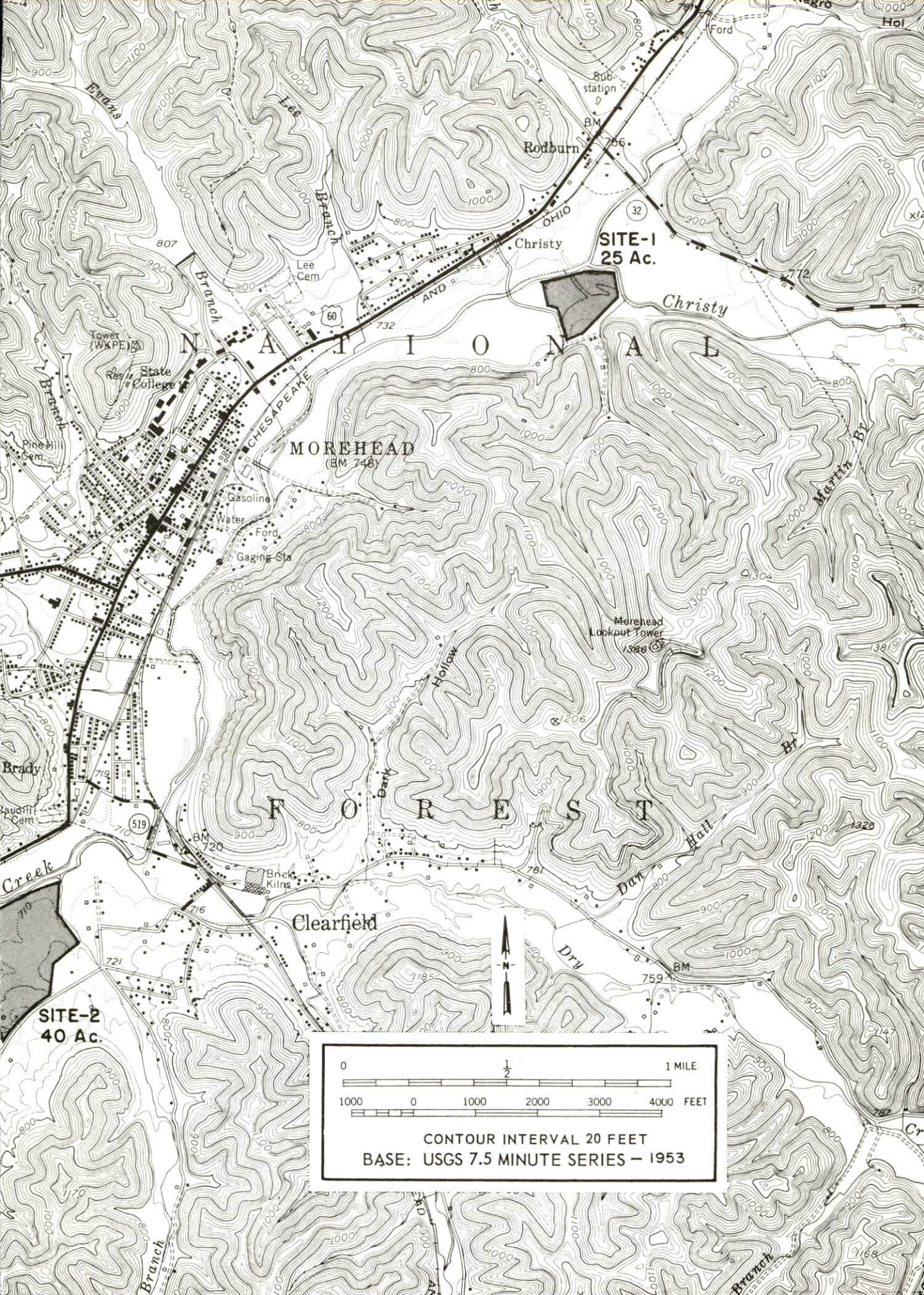
AND

Recky

CHESAPEAKE

Triplett

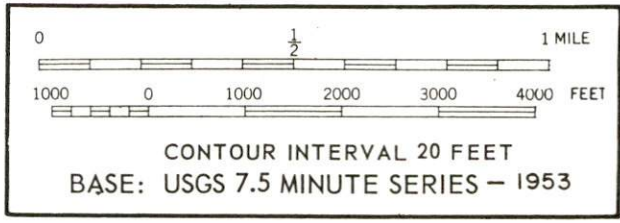




MOREHEAD  
(BM 748)

SITE-1  
25 Ac.

SITE-2  
40 Ac.





INDUSTRIAL RESOURCES

MOREHEAD, KENTUCKY

Prepared by

The Kentucky Department of Commerce

in cooperation with

The Morehead Chamber of Commerce

1971



# TABLE OF CONTENTS

<u>Chapter</u>	<u>Page</u>
INDUSTRIAL SITES . . . . .	i
MOREHEAD, KENTUCKY - A RESOURCE PROFILE . . . . .	1
THE LABOR MARKET . . . . .	4
Population Trends . . . . .	4
General Employment Characteristics, 1969 . . . . .	4
Manufacturing Employment Trends by Industry . . . . .	4
Major Morehead Manufacturing Firms, Their Products and Employment . . . . .	5
Wage Rates for Selected Occupations . . . . .	5
Labor Organizations . . . . .	8
Current and Future Labor Supply . . . . .	8
Total Personal Income . . . . .	8
Per Capita Personal Income . . . . .	8
EDUCATION . . . . .	9
Public Schools . . . . .	9
Private School . . . . .	9
Vocational Schools . . . . .	10
Colleges and Universities . . . . .	10
TRANSPORTATION . . . . .	13
Rail . . . . .	13
Truck Service . . . . .	13
Air . . . . .	14
Bus . . . . .	14
Taxi . . . . .	14
Rental Services . . . . .	14
POWER AND FUEL . . . . .	15
Electricity . . . . .	15
Natural Gas . . . . .	15
WATER AND SEWERAGE . . . . .	17
Water . . . . .	17
Sewerage . . . . .	18

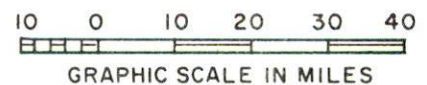
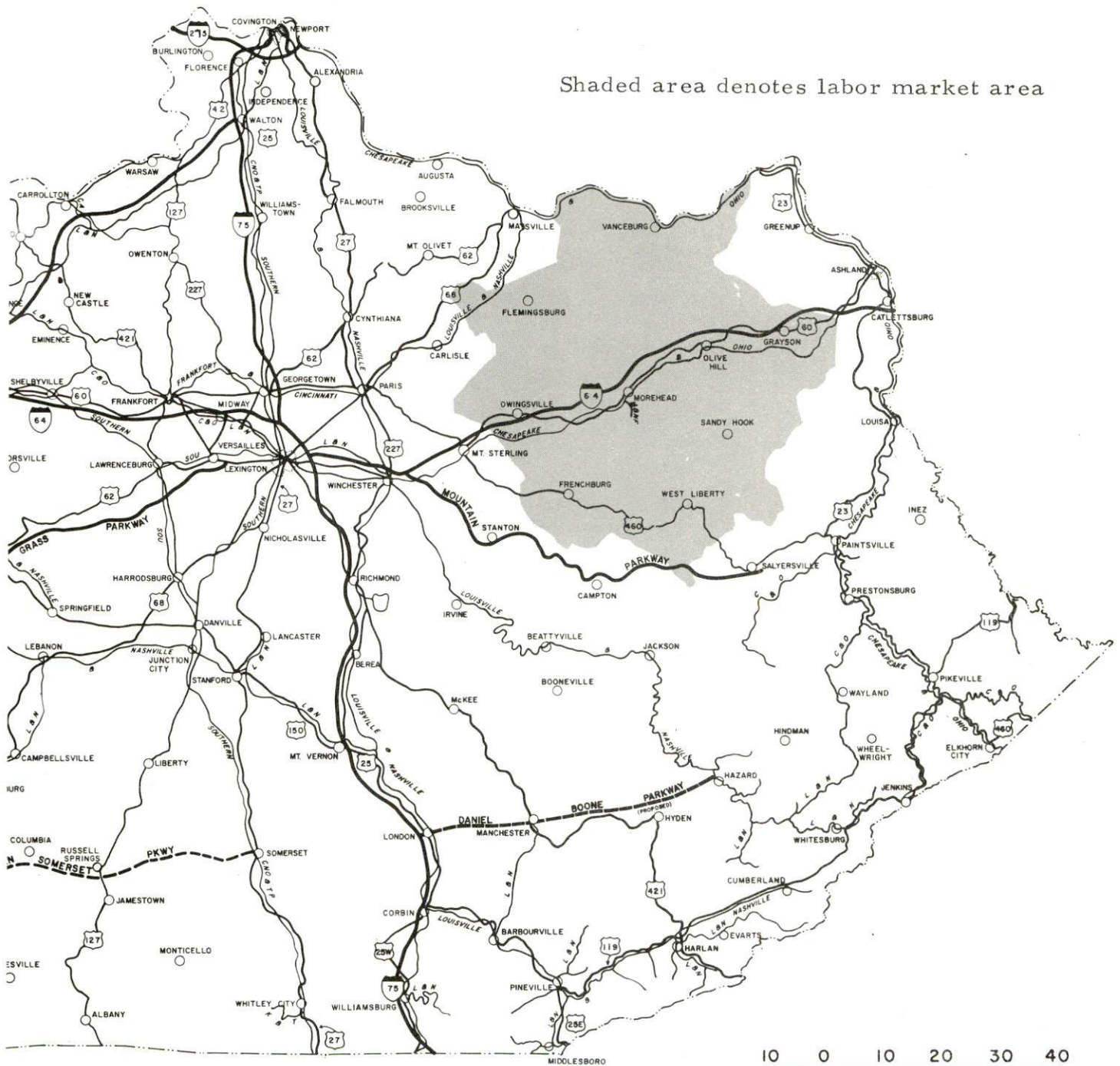


<u>Chapter</u>	<u>Page</u>
LOCAL GOVERNMENT . . . . .	19
City . . . . .	19
County . . . . .	19
Assessed Value of Property, 1970 . . . . .	19
Local General Property Tax Rates Per \$100 of Assessed Valuation, 1970 . . . . .	19
Planning and Zoning . . . . .	19
Safety . . . . .	20
Police . . . . .	20
Fire . . . . .	20
Sanitation . . . . .	20
HEALTH . . . . .	21
Hospitals . . . . .	21
Nursing Homes . . . . .	21
Public Health . . . . .	21
OTHER LOCAL FACILITIES . . . . .	22
Communications . . . . .	22
Library Services . . . . .	22
Religious Institutions . . . . .	25
Financial Institutions . . . . .	25
Hotels and Motels . . . . .	25
Clubs and Organizations . . . . .	25
RECREATION . . . . .	26
Local . . . . .	26
Area . . . . .	26
AGRICULTURE - NATURAL RESOURCES - CLIMATE . . . . .	27
Agriculture . . . . .	27
Natural Resources . . . . .	27
Climate . . . . .	27
HISTORY . . . . .	28



# MOREHEAD LABOR MARKET AREA

Shaded area denotes labor market area



## MOREHEAD, KENTUCKY - A RESOURCE PROFILE

### Location

Morehead, the home of Morehead State University, is situated at the edge of two of Kentucky's geographic regions, the eastern mountains and the Knobs. Morehead is 64 miles east of Lexington, 144 miles east of Louisville, 65 miles west of the Huntington-Ashland area, and 146 miles southeast of the Covington-Cincinnati area. Morehead, the county seat of Rowan County, had a 1970 population of 7,191, with Rowan County having a 1970 population of 17,010.

### The Economic Framework

Total employment in Rowan County averaged 4,000 in 1969 with agriculture providing 300 jobs, manufacturing 800 jobs, trade and services 930 jobs, and government 1,500 jobs. Since 1960, manufacturing employment has remained relatively stable. Major industrial products are men's and boys' dungarees, lumber, and pallets.

Per capita personal income in the county in 1969 was \$1,820. Between 1959-1969, per capita personal income in the county increased approximately 92 percent.

The Morehead labor market area includes Rowan County and the seven surrounding counties. In 1969, employment in the labor market area totaled 22,200 with agriculture providing 6,100 jobs, manufacturing 3,940 jobs, trade and services 3,515 jobs, and government 4,100 jobs. Industrial employment in this area has increased approximately 25 percent since 1960 with sharpest gains in the apparel and leather industries; printing, publishing, and paper industries; and machinery and metal products industries.

Despite industrial gains in recent years, this area still has a deficit of 5,032 manufacturing jobs when measured against the national industrial employment-population ratio. This indicates an area where potential for additional manufacturing production is excellent.

### Resources for Growth

1. There is a current estimated labor supply of 6,105 men and 4,285 women available for industrial jobs in the labor market area. In addition, 5,765 young men and 5,165 young women will become 18 years of age by 1977 and potentially available for work.



2. The local transportation capability is excellent. The Chesapeake & Ohio Railway System provides the county with a variety of services. Major highway access is by Interstate 64, U. S. Highway 60, and Kentucky Highways 32 and 519. The Morehead-Rowan County Airport has one 2,600-foot paved runway which can accommodate light aircraft. Commercial air service is available at Lexington's Blue Grass Field, only 64 miles distant.

3. Energy - Electricity is available in large quantity from Kentucky Utilities Company, Grayson RECC, and Fleming-Mason RECC. Natural gas is available in the area and is supplied to the Morehead Utility Plant Board and the Delta Natural Gas Company by Tennessee Gas Transmission Company. The water supply is adequate for continued growth.

4. Industrial sites - There are three sites available for industrial use.

5. Education is an important growth asset for Rowan County. Two school systems operate in Rowan County, and educational television is available.

Morehead State University awards two undergraduate degrees based on four-year programs - the Bachelor of Arts and the Bachelor of Science, the Master Degree in Education and Ph. D. in Education. Each degree may be taken with or without a teaching certificate. The college also awards the Associate of Applied Arts Degree to those individuals who complete one of the prescribed two-year terminal programs satisfactorily.

In addition, one junior college and two community colleges are located within 55 miles of Morehead. Lexington, a major educational center is located 70 miles west of Morehead.

The Rowan County Vocational Extension Center is located in Morehead and offers three different courses. The Ashland Area Vocational School at Ashland is only 65 miles distant and offers 15 courses.

#### Community Programs for Improvement

Morehead and Rowan County are actively continuing their programs for community improvement. Projects completed include: Route 32 four-laned out to Interstate 64, a new regional library, a new Holiday Inn, a new vocational school, a new Catholic Church, a new Baptist Student Union Building, and a speech therapy unit. Projects underway include: widening of Triplett Creek (estimated cost \$1,000,000) and widening of two bridges which cross the creek, extensive expansion and improvements of St. Claire medical facilities, and construction of Appalachian Technical Institute at Morehead State University. The Morehead-Rowan County Recreation Commission, Inc., is planning the development of a 62-acre, \$400,000 recreational area. A site has been selected within the Morehead city limits.

The following facilities will be provided: (1) clubhouse with dining room, office space, rest rooms, game room and all-purpose recreational room; (2) Olympic-size swimming pool adjacent to clubhouse which can be enclosed during the winter months, thereby providing year-round use; (3) \$30,000 grandstand; (4) three lighted baseball fields (Pony League, Little League, regulation-size); (5) two tennis courts constructed to be flooded for ice skating during the winter months; (6) outdoor grills, picnic facilities; shelter houses, outdoor basketball courts and shuffleboard, and volleyball equipment; (7) paved parking space and paved roads throughout the recreation area; and (8) riding trails.

#### Recreation, Entertainment, and Livability

Daniel Boone National Forest is 5 miles distant. The forest covers over one-half million acres of timberland in eastern Kentucky. It encompasses much of Kentucky's greatest beauty and provides a vacation paradise. There are scenic hiking trails, rivers, and creeks stocked with rainbow trout; special hunting preserves; and many hiking, camping, and fishing facilities. The highest point in the forest is in southern Whitley County at Wolf Knob - 2,245 feet.

Carter Caves State Park, 14 miles distant, is a resort park of 1,000 acres. Besides its beautiful caves, it has rugged cliffs, mountain streams, and natural bridges to enjoy. Activities at the park include: swimming in lodge pool, camping, hiking, riding, golfing, boating, and picnicking.

Grayson Reservoir, 20 miles distant, has a 1,500-acre lake for fishing, boating, swimming, and picnicking.

A wide variety of sporting and cultural activities are provided by Morehead State University.



# THE LABOR MARKET

## POPULATION TRENDS <sup>1/</sup>

Area	Population			Percent Change	
	1970	1960	1950	1960-70	1950-60
Morehead	7,191	4,170	3,102	+72.4	+34.4
Labor Market Area	89,818	88,406	96,666	+ 1.6	- 8.5
Rowan County	17,010	12,808	12,708	+32.8	+ 0.8
Bath County	9,235	9,114	10,410	+ 1.3	-12.4
Carter County	19,850	20,817	22,559	- 4.6	- 7.7
Elliott County	5,933	6,330	7,085	- 6.3	-10.7
Fleming County	11,366	10,890	11,962	+ 4.4	- 9.0
Lewis County	12,355	13,115	13,520	- 5.8	- 3.0
Menifee County	4,050	4,276	4,798	- 5.3	-10.9
Morgan County	10,019	11,056	13,624	- 9.4	-18.8

## GENERAL EMPLOYMENT CHARACTERISTICS, 1969 <sup>2/</sup>

Major Employment Group	Employment	
	Rowan County	Labor Market Area
TOTAL	4,000	22,200
Agricultural	300	6,100
Nonagricultural	3,700	16,100
Manufacturing	800	3,942
Trade and Services	930	3,517
Government	1,500	4,100

## MANUFACTURING EMPLOYMENT TRENDS BY INDUSTRY SEPTEMBER 1970 AND 1960 <sup>3/</sup>

Industry	Rowan County			Labor Market Area		
	1970	1960	% Change	1970	1960	% Change
TOTAL	726	708	+ 2.5	3,501	2,803	+ 24.9
Food & kindred products	35	7	+400.0	55	67	- 17.9
Apparel, textiles, leather	235	192	+ 22.4	1,902	879	+112.0
Lumber & furniture	248	332	- 25.3	549	667	- 17.7
Printing, publishing, paper	50	13	+284.6	169	83	+103.6
Chemicals, petroleum, coal, rubber	51	20	+155.0	51	20	+155.0
Stone, clay & glass	107	144	- 25.7	533	946	- 43.7
Machinery & metal products	0	0	--	242	140	+ 72.9
Other	0	0	--	0	1	--

MAJOR MOREHEAD MANUFACTURING FIRMS,  
THEIR PRODUCTS AND EMPLOYMENT <sup>4/</sup>

<u>Firm</u>	<u>Product</u>	<u>Employment</u>		
		<u>Total</u>	<u>Male</u>	<u>Female</u>
Cowden Morehead Co.	Men's, boys' dungarees	285	32	253
Drew Evans Tie Co., Inc.	Lumber	21	20	1
Greer Lumber Co.	Barrel staves, lumber, pallets	72	70	2
Gregory Co., Inc.	Rough lumber, dimension stock	62	60	2
Kentucky Art Plaques	Laminated plaques	11	9	2
Kentucky Bookbinders, Inc.	Bookbinding	15	5	10
The Morehead News	Newspaper, job printing	19	10	9
Spring Grove Dairy	Fluid milk, ice milk	37	35	2
J. C. Wells & Sons, Inc.	Pallets	62	62	0
R. L. Wells Lumber Co., Inc.	Pallets	53	52	1
Ray L. White & Sons, Inc.	Lumber, hardwood dimension, pallets	87	85	2

WAGE RATES FOR SELECTED OCCUPATIONS  
MOREHEAD, KENTUCKY <sup>5/</sup>

<u>Classification</u>	<u>Wages Per Hour</u>		
	<u>Starting</u>	<u>Maximum</u>	<u>Prevailing</u>
<u>Production Employees</u>			
Inspector	\$1.60	\$2.30	\$2.06
Production Laborer	1.60	2.80	2.00
<u>Service Employees</u>			
Electrician (Class-A)	\$2.00	\$3.25	\$2.50
Laborer	1.60	2.50	2.00
Mechanic, Maintenance	1.60	2.75	2.50
Truck Driver, Industrial (Class-A)	1.60	2.00	1.75
<u>Office Employees</u>			
Bookkeeper	\$1.60	\$2.50	\$2.15
File Clerk	1.60	1.90	1.75
Receptionist	1.60	2.00	1.80
Secretary	1.60	2.25	2.00
Typist	1.60	2.00	1.80

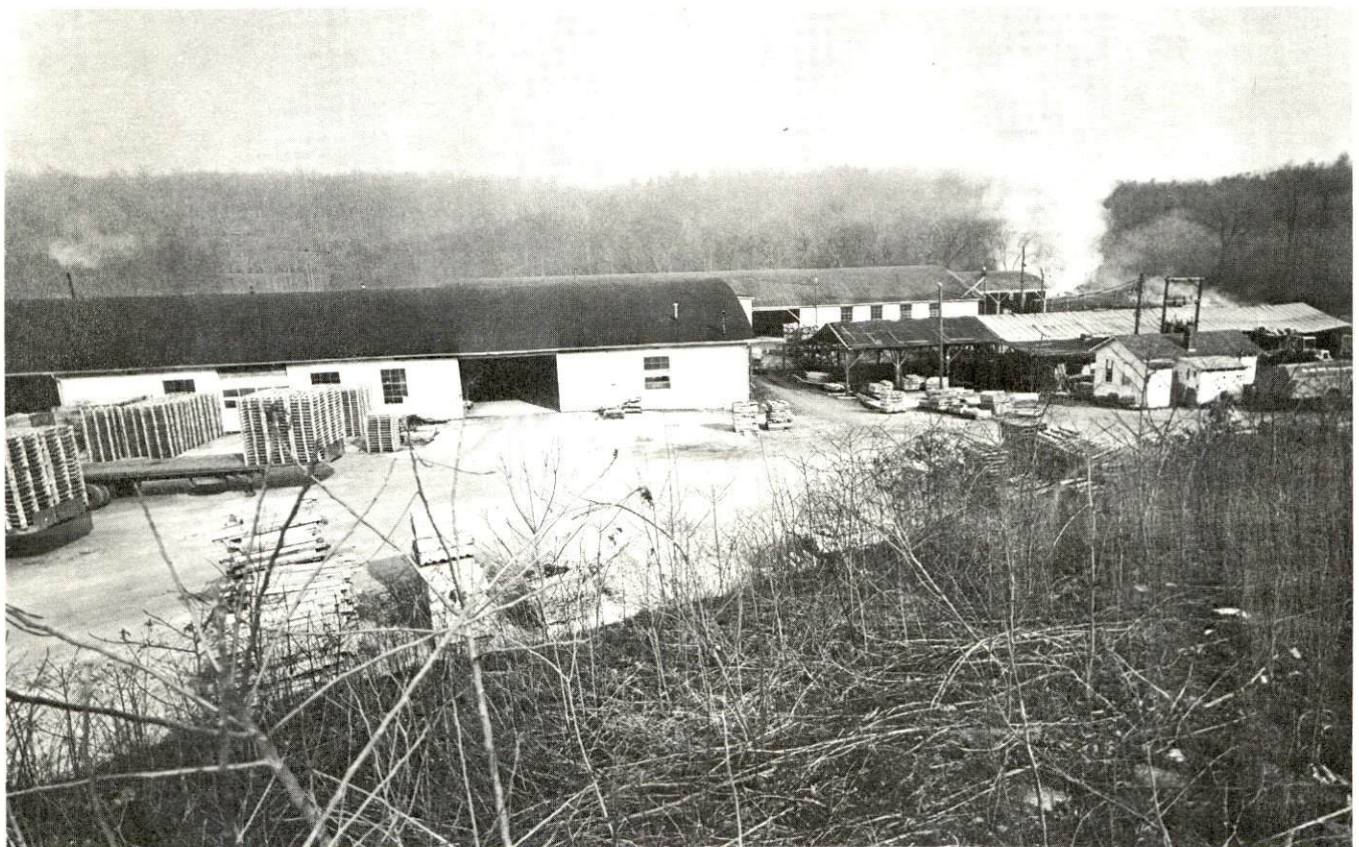




COWDEN MOREHEAD COMPANY



TWO OF MOREHEAD'S WOOD-RELATED INDUSTRIES





## LABOR ORGANIZATIONS

There are no labor unions representing manufacturing workers in Morehead at the present time.

### CURRENT AND FUTURE LABOR SUPPLY - MOREHEAD LABOR MARKET AREA

Area	Current Labor Supply, 1971 <sup>6/</sup>			Future Labor Supply by 1977 <sup>7/</sup> (Becoming 18 Years of Age)		
	Total	Male	Female	Total	Male	Female
Labor Market Area						
Area	10,395	6,107	4,288	10,931	5,764	5,167
Rowan	1,356	819	537	1,458	798	660
Bath	1,491	1,001	490	1,097	569	528
Carter	2,567	1,469	1,098	2,598	1,361	1,237
Elliot	1,143	687	456	803	401	402
Fleming	821	332	489	1,363	712	651
Lewis	859	628	231	1,707	883	824
Meniffee	710	485	225	530	293	237
Morgan	1,448	686	762	1,375	747	628

### TOTAL PERSONAL INCOME <sup>8/</sup>

Area	1969	1959	% Change
Rowan County	\$ 28,860,000	\$ 11,828,000	+144.0
Labor Market Area	146,047,000	71,155,000	+105.3
Kentucky	9,202,000,000	4,655,000,000	+ 97.7

### PER CAPITA PERSONAL INCOME <sup>9/</sup>

Area	1969	1959	% Change
Rowan County	\$1,820	\$ 947	+92.2
Labor Market Area	\$1,290 to 2,300	\$593 to 960	N.A.
Kentucky	2,847	1,552	+83.4

## EDUCATION

### Public Schools

	<u>Rowan County</u>
Total Enrollment	2,614
Elementary	1,801
High School	813
Student-Teacher Ratio	27 to 1
Elementary	26 to 1
High School	27 to 1
State Rating of High School	Standard
Percent High School Graduates to College	54.0
Current Expenditures Per Pupil	\$387.93
Bonded Indebtedness, June 30, 1970	\$1,117,000

### Private School

	<u>*University Breckinridge School</u>
Total Enrollment	491
Elementary	274
High School	217
Student-Teacher Ratio	15 to 1
Elementary	30 to 1
High School	9 to 1

\*University Breckinridge School, laboratory school of Morehead State University, has a standard rating by the Kentucky Department of Education and is accredited by the Southern Association of Colleges and Schools.



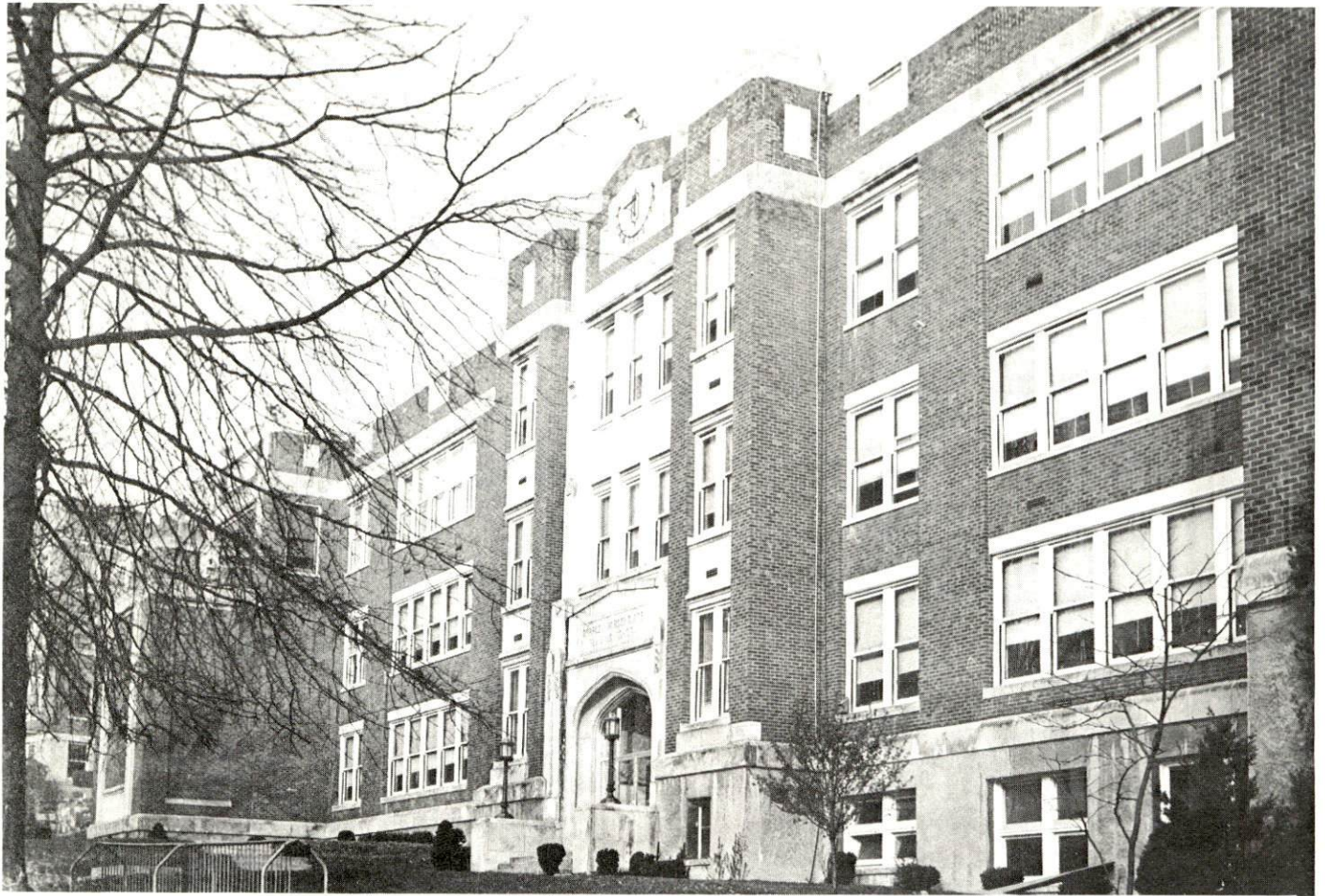
## Vocational Schools

	<u>Nearest Area School</u>	<u>Nearest Extension Center</u>
Location	Ashland Area Vocational School	Rowan County Extension Center
Miles Distant	Ashland	Morehead
Curriculum	65 General Clerical Secretarial-Steno Food Service Practical Nursing Electronics (Technology) Auto Body Repair Auto Mechanics Carpentry Cosmetology Drafting Electricity Machine Shop Radio and TV Repair Tool and Die Making Welding	General Clerical Auto Mechanics Drafting

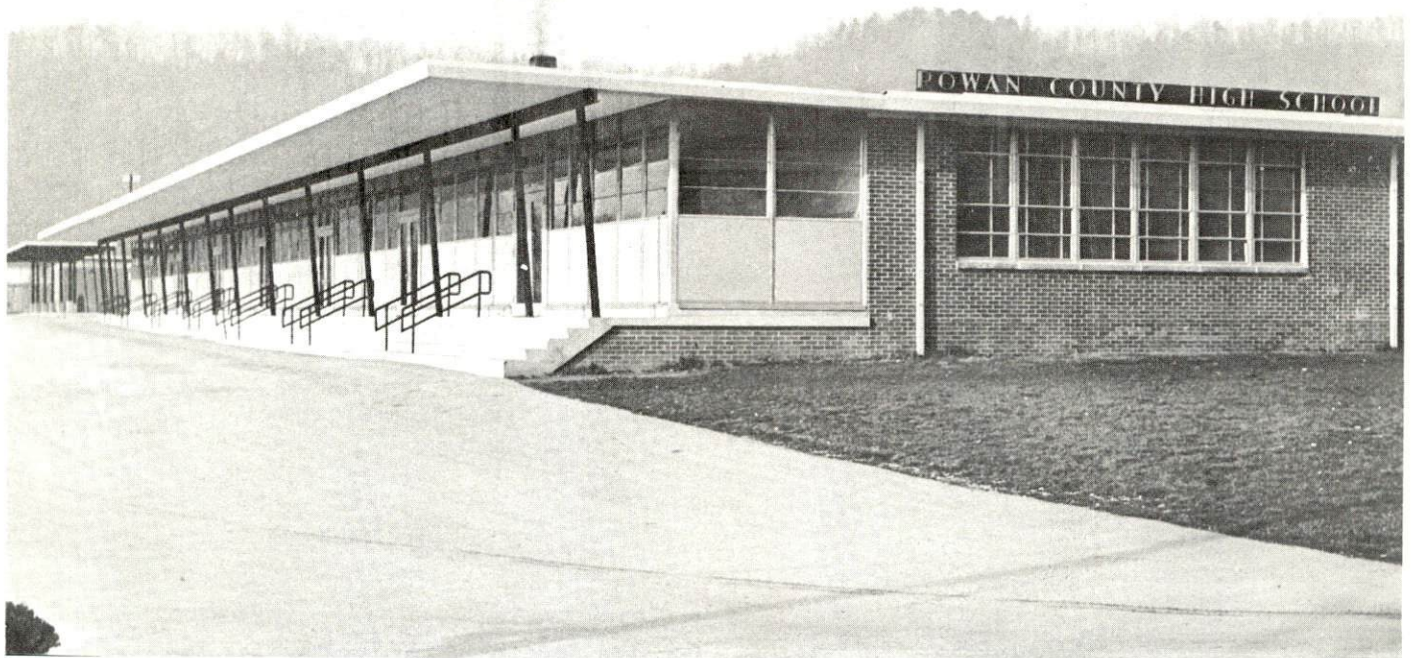
## Colleges and Universities

<u>Name</u>	<u>Area - Within 55 Miles</u>		<u>Highest Degree Conferred</u>
	<u>Location</u>	<u>Enrollment</u>	
Morehead State University	Morehead	6,030	Masters
Maysville Community College	Maysville	362	Associate
Southeastern Christian Junior College	Winchester	150	Associate
Ashland Community College	Ashland	1,087	Associate



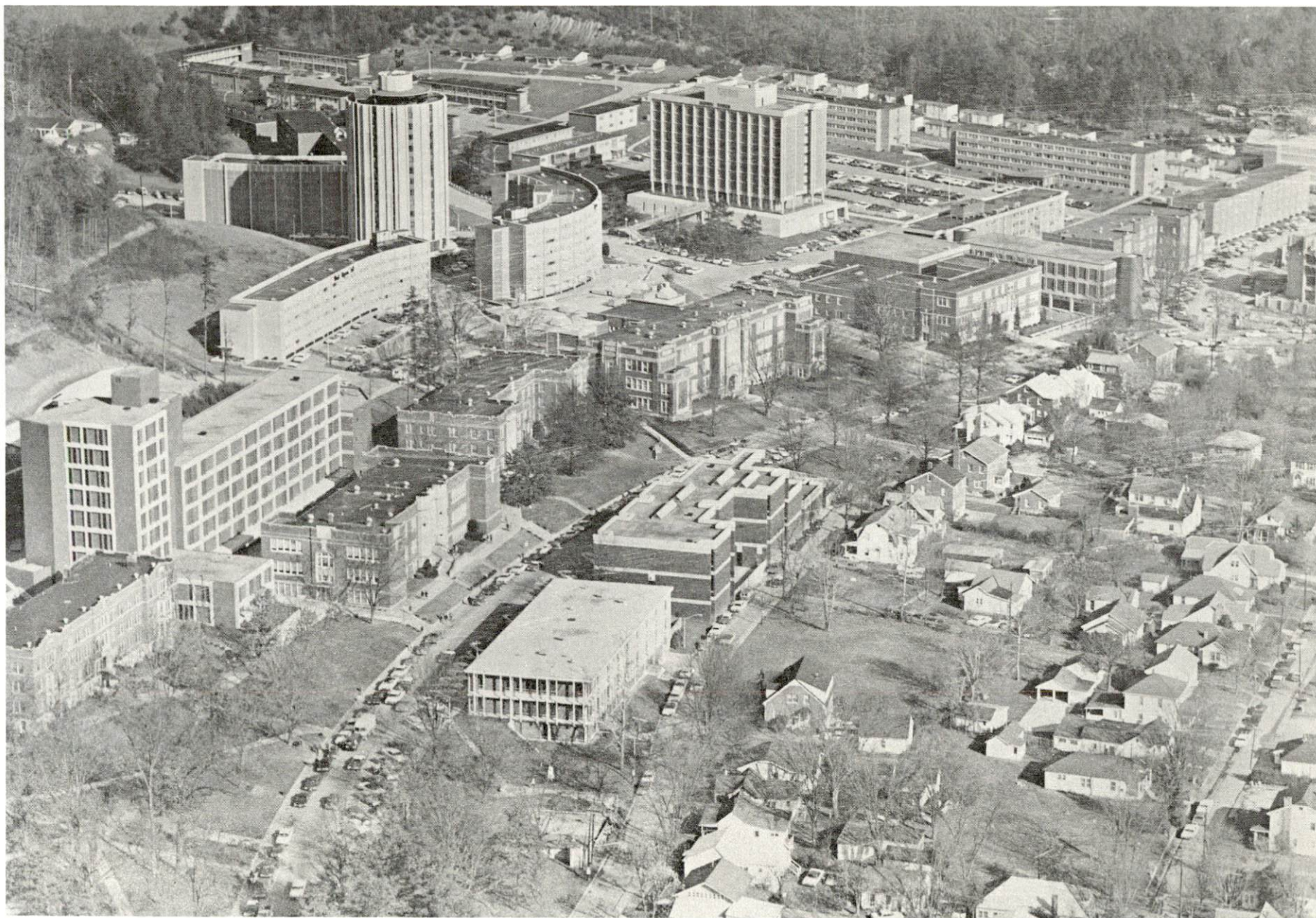


UNIVERSITY BRECKINRIDGE SCHOOL



ROWAN COUNTY HIGH SCHOOL





AERIAL VIEW OF MOREHEAD STATE UNIVERSITY



## TRANSPORTATION

### Rail

Line serving Morehead - Chesapeake & Ohio Railway  
Services - Freight, switching, siding, and REA Express

Line serving Morehead and Clearfield - The Morehead and North Fork  
Railroad Company (short line service)  
Services - Freight, siding, switching

### RAILWAY TRANSIT TIME FROM MOREHEAD, KENTUCKY, TO: 10/

City	No. of Days		City	No. of Days	
	CL			CL	
Atlanta, Ga.	3		Los Angeles, Calif.	6	
Birmingham, Ala.	3		Louisville, Ky.	1	
Chicago, Ill.	1		Nashville, Tenn.	2	
Cincinnati, Ohio	1		New Orleans, La.	3	
Cleveland, Ohio	3		New York, N. Y.	3	
Detroit, Mich.	2		Pittsburgh, Pa.	3	
Knoxville, Tenn.	3		St. Louis, Mo.	3	

### Truck Service

<u>Company</u>	<u>Home Office</u>
McLean Trucking Company	Winston-Salem, North Carolina
Point Express, Inc.	Charleston, West Virginia
United Parcel Service	Louisville, Kentucky

### HIGHWAY MILES AND TRUCK TRANSIT TIME IN DAYS FROM MOREHEAD, KENTUCKY, TO SELECTED MARKET CENTERS

City	Highway Miles	Delivery Time <u>11/</u>		City	Highway Miles	Delivery Time	
		LTL	TL			LTL	TL
Atlanta, Ga.	451	3	2	Los Angeles, Calif.	2,250	7	7
Birmingham, Ala.	434	3	2	Louisville, Ky.	144	3	2
Chicago, Ill.	439	3	2	Nashville, Tenn.	287	3	2
Cincinnati, Ohio	146	2	1	New Orleans, La.	785	4	3
Cleveland, Ohio	394	3	2	New York, N. Y.	699	3	2
Detroit, Mich.	415	3	2	Pittsburgh, Pa.	337	3	2
Knoxville, Tenn.	257	3	2	St. Louis, Mo.	408	3	2



## Air

	<u>Local</u>	<u>Nearest Commercial</u>
	Morehead-Rowan County Airport	Blue Grass Field
Location:	5 1/2 miles southwest of Morehead	Lexington, 64 miles distant
Runways:	1 paved	3 paved
Length:	2,600 feet	6,500 feet, 3,500 feet, 3,500 feet
Traffic		
Control:	Wind sock	Tower, guards, approach control, ground control, ILS system
Lighting:		Approach lighting system, beacon, runways and obstructions lighted
Services:		80, 100 and 145 octane jet fuel; major A & E repairs, storage; restaurant; Weather Bureau; flight instruction; charter service; taxi; U-Drive-It service; Eastern, Delta, Piedmont and Allegheny Airlines

## Bus

Southern Greyhound Bus Lines

## Taxi

Five companies, 24-hour service

## Rental Services

Car rental

## POWER AND FUEL

### Electricity

Company serving Morehead - Kentucky Utilities Company  
Source of power - Kentucky Utilities Company  
Total generating capacity - 1,215,000 KW  
Industrial rates furnished by - Kentucky Utilities Company, Lexington,  
Kentucky

Company serving Rowan County - Grayson RECC, Fleming-Mason RECC  
Source of power - East Kentucky Power Cooperative  
Total generating capacity - 515,000 KW  
Industrial rates furnished by - Grayson RECC, Grayson, Kentucky;  
Fleming-Mason RECC, Flemingsburg, Kentucky

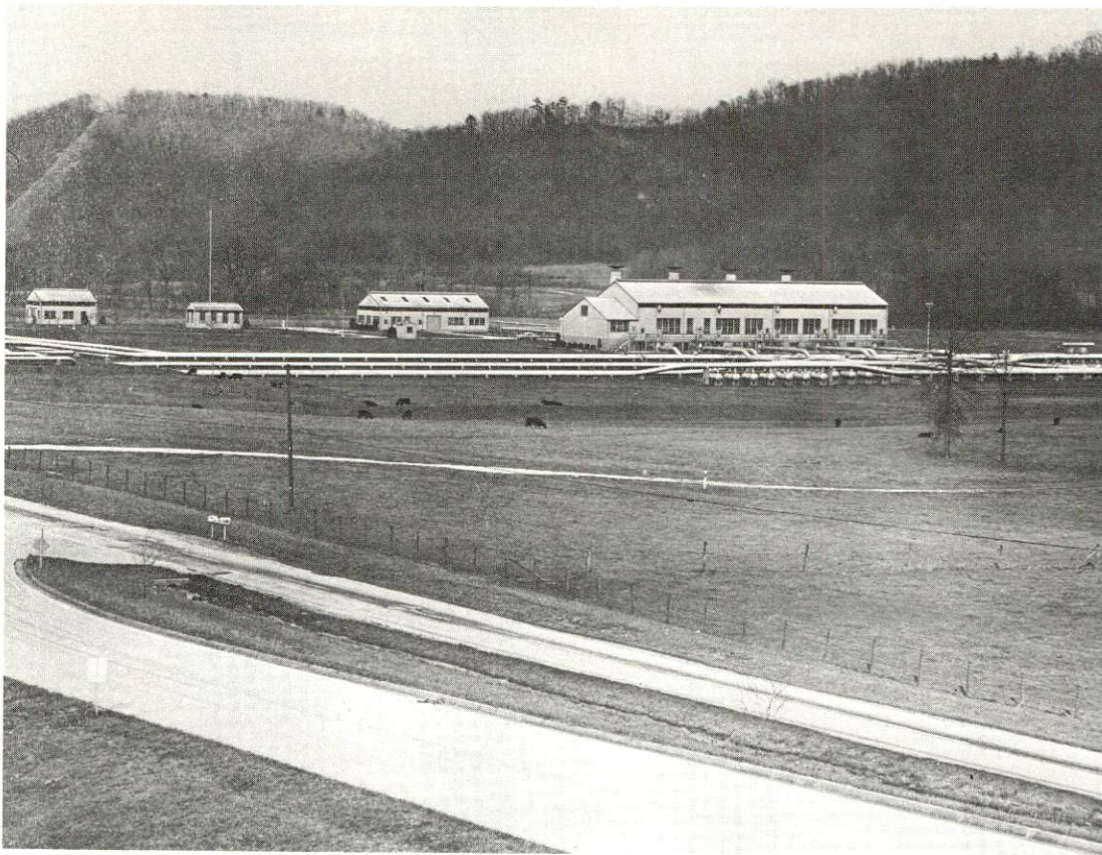
### Natural Gas

Company serving Morehead - Morehead Utility Plant Board  
Source of supply - Tennessee Gas Transmission Corporation  
Size of transmission line - 30-inch  
Distribution lines - 4 and 6 inches  
BTU content - 1050  
Specific gravity - .61  
Distribution pressure - 30 psi  
Rates -

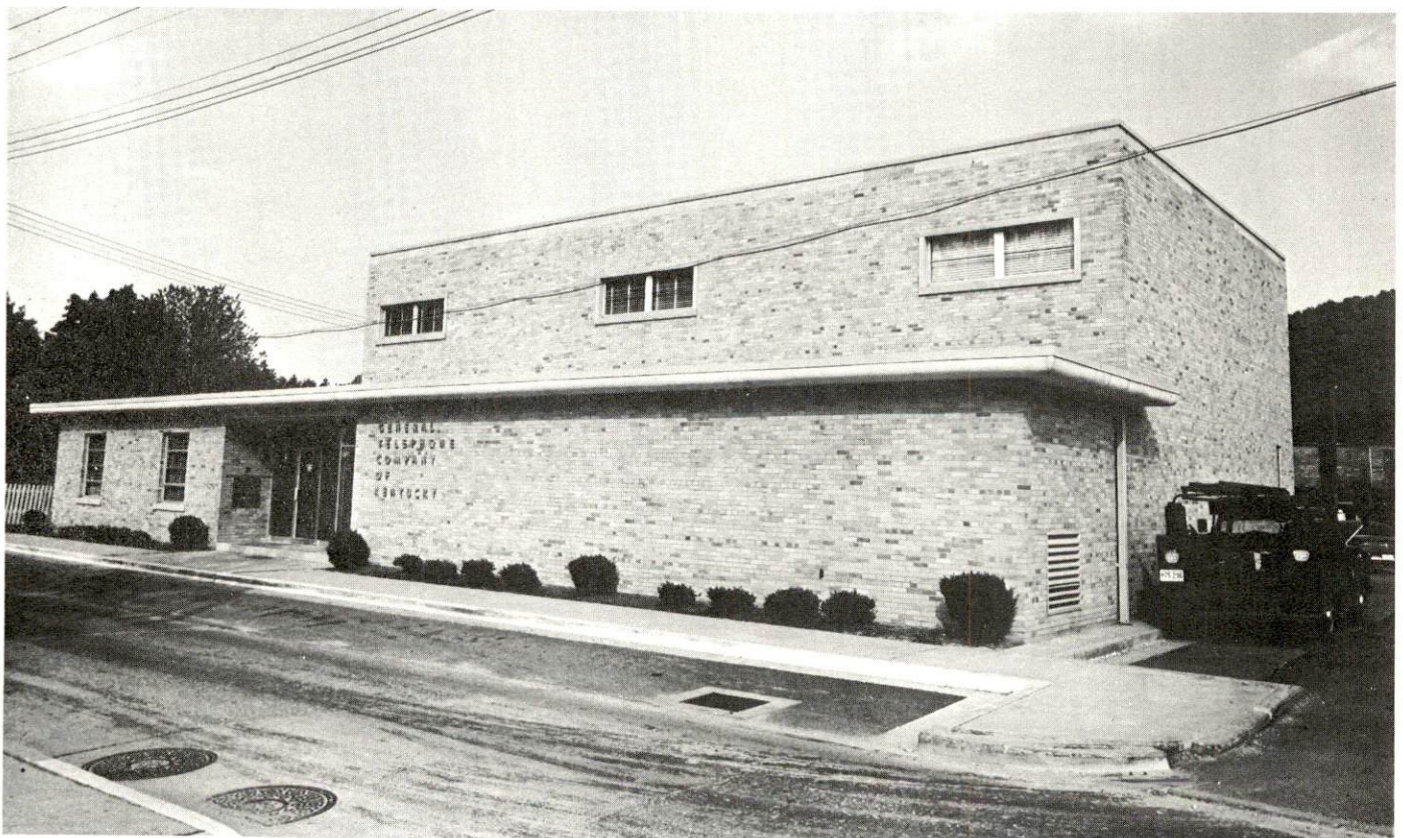
Minimum		\$1.90
First	2,000 cu. ft.	1.15 per Mcf
Next	3,000 cu. ft.	.90 per Mcf
Next	5,000 cu. ft.	.80 per Mcf
Next	10,000 cu. ft.	.75 per Mcf
Next	30,000 cu. ft.	.70 per Mcf
Over	50,000 cu. ft.	.65 per Mcf

Company serving Farmers, Clearfield, and Blue Stone - Delta Natural  
Gas Company  
Source of supply - Tennessee Gas Transmission Corporation  
Size of transmission line - 30-inch  
Distribution lines - 2 and 4 inches  
BTU content - 1050  
Specific gravity - .61  
Distribution pressure - 15 psi  
Rates - Industrial rates will be furnished upon request by the Delta  
Natural Gas Company, Owingsville, Kentucky





TENNESSEE GAS TRANSMISSION COMPANY  
BOOSTER STATION



GENERAL TELEPHONE COMPANY OF KENTUCKY



## WATER AND SEWERAGE

### Water

Company serving Morehead - Morehead Utility Plant Board

Source - Licking River

Treatment plant capacity - 1,512,000 gpd

Average daily consumption - 711,451 gallons

Peak daily consumption - 711,451 gallons

Type treatment - Settling, rapid sand filtration, fluoridation

Storage capacity - 905,000 gallons

Average pressure - 65 psi

Average temperature - 50° F.

Size mains - 4, 6, 8, 10, and 16 inches

#### MONTHLY WATER RATES FOR WHOLESALE AND INDUSTRIAL CONSUMERS

---

First	2,000 gallons	\$2.00 Minimum
Next	4,000 gallons	.80 per 1,000 gallons
Next	4,000 gallons	.70 per 1,000 gallons
Next	20,000 gallons	.60 per 1,000 gallons
Next	20,000 gallons	.50 per 1,000 gallons
Next	250,000 gallons	.40 per 1,000 gallons
Over	300,000 gallons	.35 per 1,000 gallons

20% or more outside the city limits

Company serving Morehead State University - University maintains complete water system

Source - Triplett Creek and private reservoir

Treatment plant capacity - 2,000,000 gpd

Average daily consumption - 450,000 gallons

Peak daily consumption - 520,000 gallons

Type treatment - prechlorination, sedimentation, filtration, post-chlorination

Storage capacity - 500,000 gallons

Average pressure - 70 psi

Average temperature - 65° F.

Size mains - 6, 8, and 10 inches



Name of water district - Rowan Water, Inc.

Date when water district began operating - April 1970

Source of supply of treated water - City of Morehead

Amount of water which can be purchased in a 24-hour period -  
300,000 gallons

Average amount of water used in a 24-hour period - 62,549 gallons

Peak amount of water used in a 24-hour period - 64,976 gallons

Water district storage facilities and capacities - Storage tank on  
East U. S. 60, 40,000-gallon capacity; storage tank on Kentucky  
Route 801, 50,000-gallon capacity

Average pressure - 50-125 psi range

Average temperature - 50° F.

Size mains - 3, 6, and 8 inches

Rates - Industrial rates will be furnished by Rowan Water, Inc.,  
Morehead, Kentucky

Surface water sources - Licking River and Triplett Creek; Cane Run  
Reservoir on the Licking River is under construction

Average discharge - Licking River at Farmers, 1,025 cfs (31-year  
record USGS); Triplett Creek at Morehead, 72 cfs (28-year record  
USGS)

Expected ground water yield - Eastern and southwestern portions of  
county 5 to 50 gpm; remainder of county 5 gpm or less

#### Sewerage

Company serving Morehead - Morehead Utility Plant Board

Design capacity - 1,500,000 gpd

Average daily flow - 650,000 gallons

Treatment - Primary and secondary

Type treatment - Settling, digester, clarification, chlorination,  
drying beds

Treated effluent discharged into - Triplett Creek

Size of sanitary mains - 4, 6, 8, 10, and 24 inches

Size of storm mains - 36 inches

Rates - 95 percent of monthly water bill

## LOCAL GOVERNMENT

### City

Structure - Mayor - 4-year term; 6 councilmen - 2-year terms  
Budget 1970 - General Fund \$277,782; Water, Sewer and Gas Fund  
\$265,483  
Fees and licenses - Unloading license - \$25 per year; Auto license -  
\$10 per year

### County

Structure - County Judge - 4-year term; 4 magistrates - 4-year terms  
Budget 1970-71 - General Fund \$101,400; Road Fund \$29,000

### Assessed Value of Property, 1970

<u>Classes of Property*</u>	<u>Rowan County</u>
Real Estate	\$62,085,275
Tangibles	13,504,689
Public Service	25,010,519 (1969)

### Local General Property Tax Rates Per \$100 of Assessed Valuation, 1970 <sup>12/</sup>

<u>Taxing Unit**</u>	<u>Morehead</u>	<u>Rowan County</u>
State	\$ .015	\$ .015
County	.176	.176
School	.481	.481
City	.550	
Total	\$1.222	\$ .672

### Planning and Zoning

Agency - Joint Planning Commission  
Plans completed - Base Studies, Subdivision Regulations, Zoning Ordinance,  
Parking Study  
Codes adopted - Building, Housing, Plumbing, Electric, Fire and Gas Codes.

\*Property assessed at 100 percent of fair value.

\*\*Manufacturing machinery, raw materials inventories and goods in process  
inventories are not subject to local tax. State rate is only \$.15 per \$100.



Safety

<u>Police</u>	<u>Morehead</u>	<u>Rowan County</u>
Total staff	8	2
Radio-patrol cars	2	2
State police barracks located in Morehead		

Fire

American Insurance Association Fire Rating	6 and 7
Volunteers	23
Equipment:	
750 gpm pumper	1
500 gpm pumpers	2
250 gpm pumper	1

Sanitation

	<u>Morehead</u>	<u>Rowan County</u>
Type service	municipal	private
Cost:		
residential	none	\$3.50 per month
business	\$2 to \$12 per month (varies according to amount collected)	contracted
Collection frequency:		
residential	twice weekly	weekly
business	twice weekly	as needed
Trash pickup	twice weekly	weekly
Disposal method	land fill	land fill

## HEALTH

### Hospitals

<u>General Hospital</u>	<u>Location</u>	<u>Beds</u>
St. Claire Medical Center	Morehead	41

General hospital facilities - Emergency room, X-ray equipment, EKG, laboratory, operating room, 9 bassinets

Medical staff - 3 surgeons, 2 internists, 5 general practitioners, 11 registered nurses, 8 licensed practical nurses, 4 lab technicians, 2 X-ray technicians, 3 consulting pathologists, 1 consulting radiologist.

Expansion program underway - At the present time the center is involved in an expansion program. Plans call for 52 additional beds in a new wing. The expanding facilities in the new wing will include an emergency room, X-ray room, laboratory, 2 major operating rooms, 1 minor operating room, and a cystoscopy room. New services to be offered will include cardiac care, pediatrics, obstetrics, and physical therapy. The medical center will be affiliated with Morehead State University for the two-year nursing associate program starting August 1971.

### Nursing Homes

	<u>Number</u>	<u>Beds</u>
Extended care homes	1	61

### Public Health

Facility - Rowan County Health Department

Staff - Two sanitarians, two registered nurses, one health program coordinator, one clerk (full-time), two clerk-typists (part-time)

Budget 1970-71 - \$41,459

Morehead is the regional headquarters of Home Health Service.



## OTHER LOCAL FACILITIES

### Communications

Telephone - General Telephone Company  
Services - Standard

Telegraph - Western Union

Postal - U. S. Post Office  
Class - First  
Mail received - three times daily  
Mail dispatched - three times daily

Newspapers - The Morehead News  
Weekly and circulation - 5,155  
Other papers received from - Louisville, Lexington, and Ashland,  
Kentucky

Radio - WMOR AM-FM  
Stations received from - Lexington, Ashland, Mt. Sterling, and  
Grayson, Kentucky

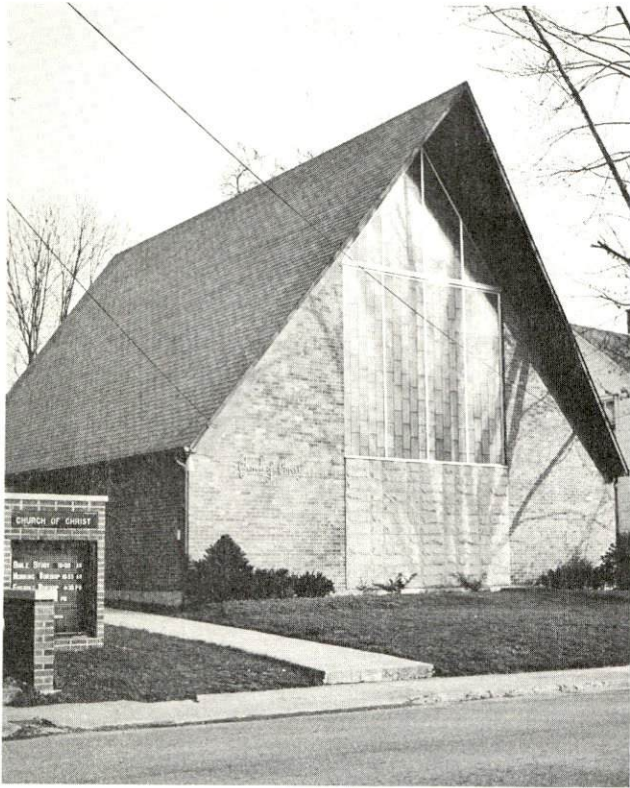
Television -  
Cable Service  
Reception from - Huntington and Charleston, West Virginia; Lexington,  
Kentucky  
Kentucky Educational Television - Morehead transmitter, Channel 38

### Library Services

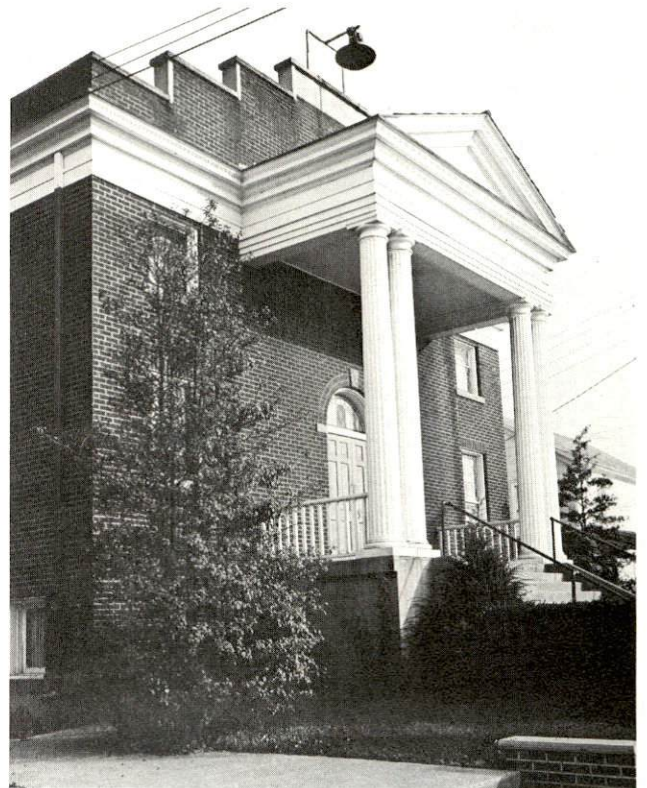
Public library - Rowan County Public Library  
Size collection - 15,905 volumes  
Circulation, 1970 - 47,798 (includes Bookmobile)  
Services - Story hour, magazines, records, art, pamphlets, community  
meeting room, plan programs

Private library - Johnson Camden Library - Morehead State University  
Size collection - 300,000 volumes  
Circulation, 1970 - 367,000 volumes  
Special collections - Kentucky Room, James Still Room  
Services - Conference rooms; study carrels; single desks; materials  
center, which has a wide assortment of phonorecords, filmstrips and  
teaching aids; microfilm readers; microcard readers; microfiche  
reader-printer; four coin-operated photographic machines





CHURCH OF CHRIST



METHODIST CHURCH



ST. CLAIRE MEDICAL CENTER





THE CITIZENS BANK



PEOPLES BANK OF MOREHEAD

### Religious Institutions

Number of churches - 8

Denominations - Baptist, Christian, Church of God, Methodist, Catholic, Episcopal, Church of Christ, Nazarene

### Financial Institutions

<u>Bank</u>	<u>Statement as of December 31, 1970</u>	
	<u>Assets</u>	<u>Deposits</u>
The Peoples Bank of Morehead	\$10,353,369	\$9,668,202
The Citizens Bank	8,836,298	8,199,594
<u>Savings and Loan Association</u>	<u>Assets</u>	<u>Shared Accounts</u>
First Federal Savings and Loan Association of Morehead	\$ 4,411,080	\$4,140,776

### Hotels and Motels

Total Number - 7

Units - 272

### Clubs and Organizations

Business and Civic - Chamber of Commerce, Jaycees, Kiwanis, Lions, Optimist, Medical Society, Dental Society, Ministerial Association, Red Cross, Welcome Wagon

Fraternal - American Legion, FOP, Masonic Lodge

Women's Clubs - Woman's Club, B and PW Club, Eastern Star, Homemakers, Garden Club, Rebekah, Lioness, Jaycettes, American Legion Auxiliary, American Business Women's Association, American Association of University Women, League of Women Voters, Daughters of America

Youth - Boy Scouts, Girl Scouts, Cub Scouts, Brownies, FFA, FHA, 4-H, FTA, FAA, Beta Club, FBLA, Junior Achievement, Campfire Girls



## RECREATION

### Local

#### Public Recreation Facilities

Park - Radburn Park in Daniel Boone National Forest

Playgrounds - 2

Baseball diamonds - 2

Football field - 1

Other - swimming pool and golf course at University open to the public

#### Private Recreation Facilities

Movie theaters - 2 indoor, 1 outdoor

#### Cultural Events

Morehead State University offers a variety of cultural and athletic events. The American Folk Song Festival is held annually at Carter Caves State Park only 14 miles distant.

### Area (Within 25 miles)

Daniel Boone National Forest

Carter Caves State Resort Park

Grayson Reservoir

# AGRICULTURE - NATURAL RESOURCES - CLIMATE

## Agriculture 13/

	<u>Rowan County</u>	<u>Labor Market Area</u>
Total land area (acres)	185,600	1,585,160
Percent of area in farm land	47.9	68.0
Number of farms	756	8,840
Average size of farms (acres)	117.7	121.9
1964 value of all farm products	\$1,420,842	\$28,569,323
Value per farm	1,879	3,231
Total crop sales	971,188	18,743,092
Total livestock & livestock products	447,003	9,818,453
1968 agricultural production included:		
Burley tobacco (lbs.)	1,329,000	27,149,000
Corn (bu.)	80,000	1,809,000
Cattle and calves (number)	5,900	98,500
Hogs and pigs (number)	1,300	20,200
Milk production, 1967 (lbs.)	4,550,000	126,365,000

## Natural Resources

Principal mineral resources	Limestone, fire and miscellaneous clays
Other mineral resources	Sandstone, sand and gravel, oil and gas have been produced
Acres of commercial forest land	140,800 (76% of land area)
Most abundant tree species	Red oak, white oak, yellow pine, hickory, yellow poplar, beech, soft maple

## Climate 14/

	<u>Rowan County</u>
Temperature	
Annual mean (30-year record)	55.6 degrees
Average annual 1970	54.5 degrees
Record highest July, 1966 (7-year record)	98.0 degrees
Record lowest January, 1966 (7-year record)	-10.0 degrees
Seasonal heating degree-days (30-year record)	4,683
Precipitation	
Mean annual total (30-year record)	44.73 inches
Mean annual snow and sleet (25-year record)	16.00 inches
Total precipitation 1969	39.50 inches
Mean number days precipitation (.01 inch or more) (26-year record)	129
Average number days thunderstorms (26-year record)	47
Prevailing winds (17-year record)	South



## HISTORY

Rowan County lies in the Knobs and Eastern Kentucky Mountains geographical regions of Kentucky, covering 290 square miles. Its surface is hilly with a few steep mountains in the eastern portion. The soil is thin with a clay and sand base except in the valleys where there are rich deposits of top soil. The county is drained by the Licking River, which skirts its southern border. Triplett Creek, running through the center of the county, affords some fine locations for water power. Limestone deposits found here are used extensively. A major portion of the area is covered by the Daniel Boone National Forest.

Formed in 1856 as Kentucky's one-hundred-fourth county, Rowan County was named for John Rowan, distinguished jurist and U. S. Senator (1825-1831), who ably defended Kentucky's land claimant laws before the U. S. Supreme Court. Rowan became the first president of the Kentucky Historical Society.

Morehead, the county seat, was named in honor of Charles S. Morehead of Nelson County, who was Governor of Kentucky at the time Rowan County was formed, and James T. Morehead of Bullitt County, another Kentucky Governor. Morehead was the site of the Eastern Kentucky Moonlight Schools, established in 1911 to give night instruction to pupils of all ages. Its founder, Mrs. Cora Wilson gained national attention for her success in practically eliminating illiteracy in the area. In 1887 Morehead State Normal School was founded by Mrs. Phoebe Button, later to become a state supported college in 1922, and then Morehead State University in 1966. Currently more than 6,000 students are enrolled at the University, noted for its beautiful campus.

The earliest recorded population figure for Rowan County was 2,282 in 1860. Growth has been steady since then with a population of 12,708 in 1950; 12,808 in 1960; and 17,010 in 1970, representing a 32 percent increase in the last decade alone.

Agricultural employment accounted for 300 of the county's 4,000 employed in 1969. Principle agricultural products are corn, hay, tobacco, poultry, and cattle. Manufacturing employment was up to 757 in 1969, with apparel, lumber, stone and clay products the most important industrial products. Largest among Rowan County's eighteen manufacturing firms are: Cowden Morehead Company, which produces men's dungarees; Greer Lumber Company; and Ray L. White & Sons, also a lumber company. Seven mines produce fire clay for fire brick and block. Government employment accounted for 1,500 in the county, due in a large part to Morehead State University.

A major transportation artery, Interstate 64 bisects Rowan County and has stimulated recent economic growth.

## SOURCES OF INFORMATION

- 1/ U. S. Department of Commerce, Bureau of the Census, Census of Population, 1950, 1960, 1970.
- 2/ Kentucky Department of Economic Security, Division of Research and Statistics.
- 3/ Kentucky Department of Economic Security, Number of Workers in Manufacturing Industries Covered by Kentucky Unemployment Insurance Law Classified by Industry and County, September 1970, September 1960.
- 4/ Kentucky Department of Commerce, 1971 Kentucky Directory of Manufacturers.
- 5/ Kentucky Department of Economic Security, Division of Employment Service, Morehead Office.
- 6/ Kentucky Department of Economic Security, Kentucky Labor Supply Estimates by County, January 1971.
- 7/ Kentucky Department of Commerce, Future Labor Supply by 1977.
- 8/ University of Kentucky, Office of Development Services and Business Research, Total Personal Income in Kentucky.
- 9/ University of Kentucky, Office of Development Services and Business Research, Per Capita Income in Kentucky.
- 10/ The Chesapeake & Ohio Railway Company, Baltimore, Maryland.
- 11/ Point Express, Inc., Charleston, West Virginia.
- 12/ Kentucky Department of Revenue, Kentucky Property Tax Rates, 1970; City of Morehead.
- 13/ U. S. Department of Commerce, Bureau of the Census, Census of Agriculture, 1964. U. S. Department of Agriculture and Kentucky Department of Agriculture, Kentucky Agricultural Statistics, 1969.
- 14/ U. S. Department of Commerce, Environmental Science Services Administration, Climatological Data, 1970.

All other information was obtained from governmental offices, local businesses and organizations.